

# East Side Coastal Resiliency Construction Update

CB3 Parks Committee Meeting

Virtual Meeting

June 9, 2022

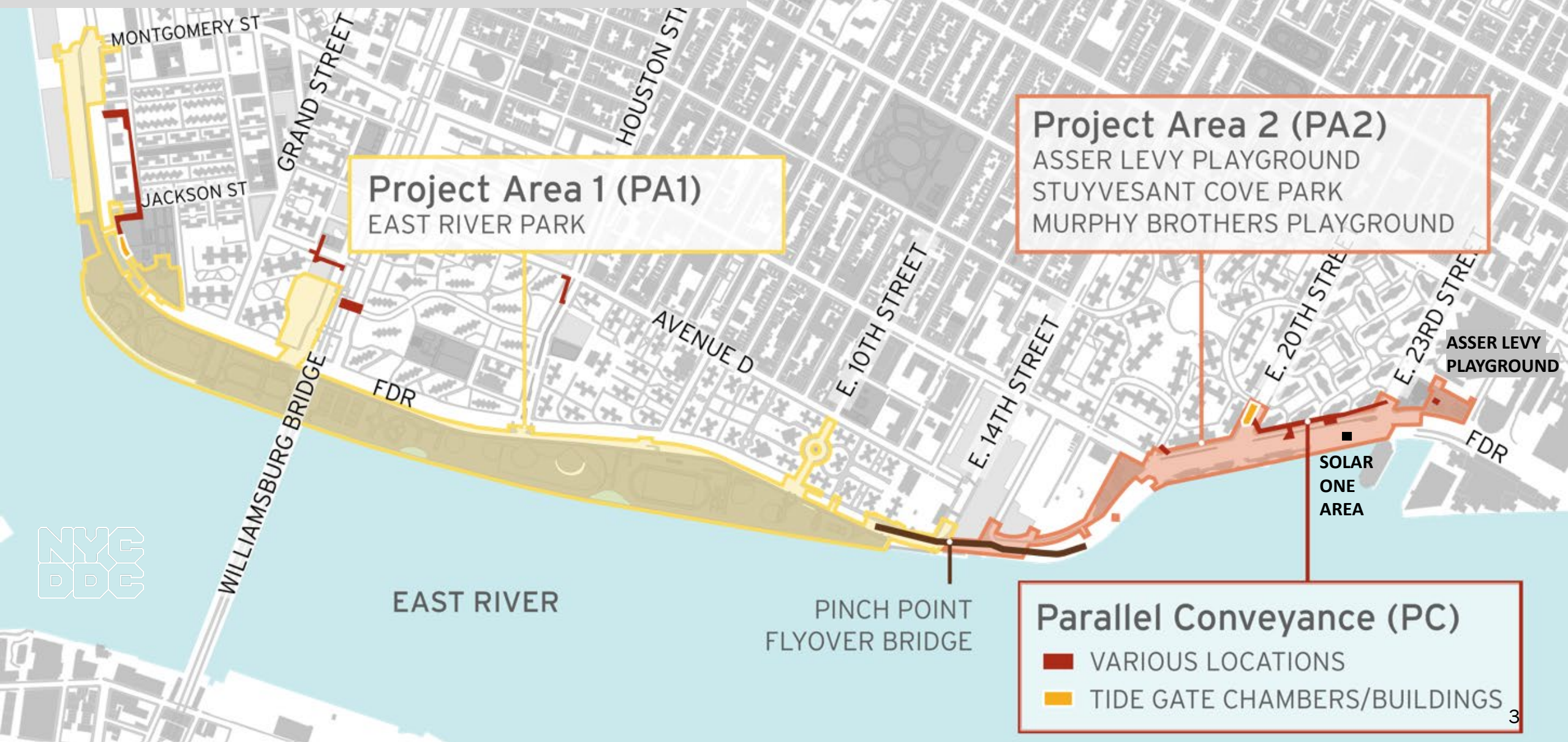


Mayor's Office of  
Resiliency

# Highlights

- Overview of Contracts
  - Project Area 2
  - Project Area 1
- Environmental Mitigation - Soil

# PROJECT AREA OVERVIEW



# Overview of Contracts

## Project Area 1 (PA1)

- NTP issued August 16, 2021
- East River Park partial closure south of Stanton Street & partial Greenway closure
- Delancey St. Pedestrian Bridge Removed
- partial closure of Corlears Hook Park & passive lawn
- Corlears Hook Temporary Pedestrian Bridge installed
- ongoing ConEd Work
- waterfront work begins

## Project Area 2 (PA2)

- Asser Levy Playground Open!
- Stuyvesant Cove Park at E 20<sup>th</sup> Street north including Solar One Area under construction
- first flood gate and over 1,000 ft of floodwall installed

## Parallel Conveyance (PC)

- [bid opened 2/10/2022](#)
- April 29, 2022, DEP [presentation](#) and [recording](#)
- potentially fall 2022 construction start
- contract duration is approximately 4 years

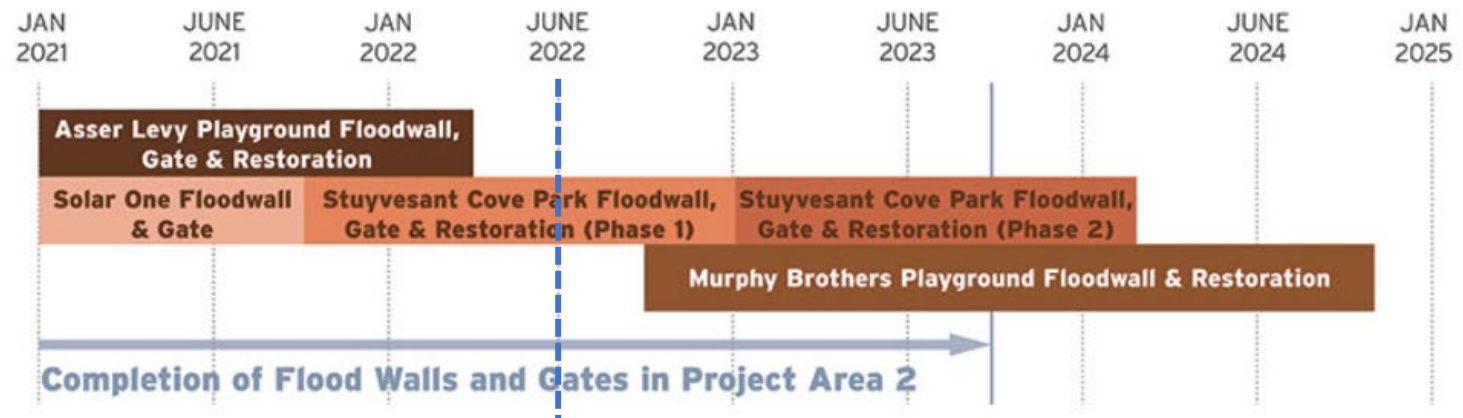
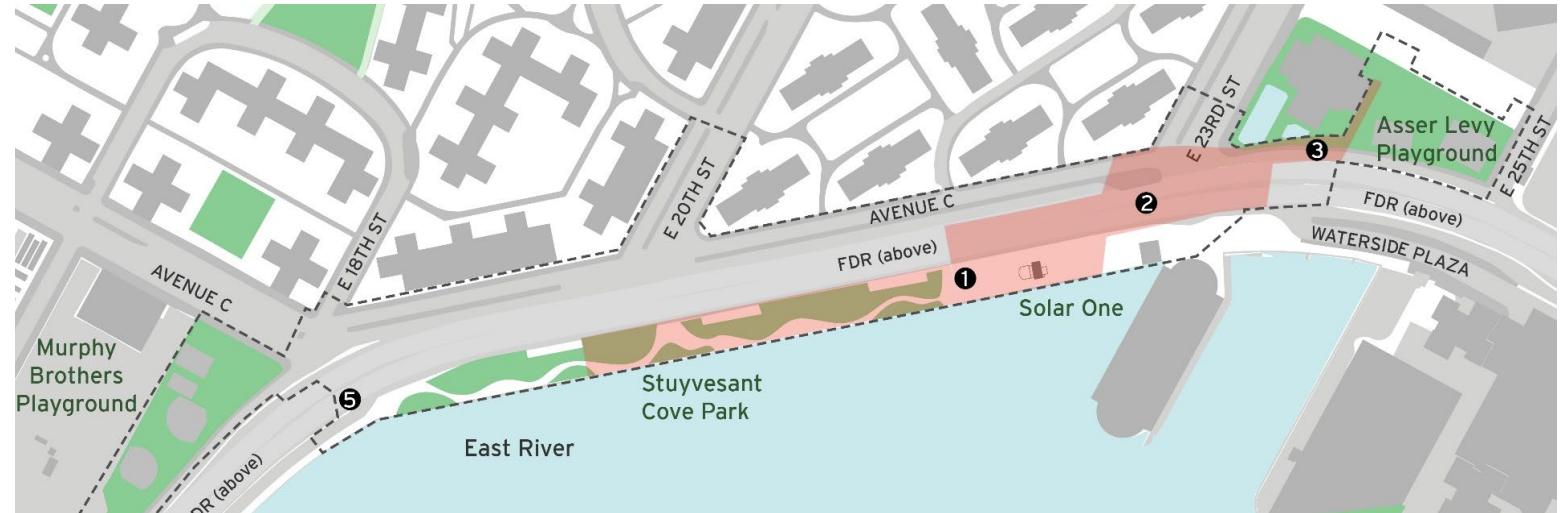
---

# Project Area 2

# PA2 | Construction Progress

ALL WORK IS SUBJECT TO CHANGE

1. Stuyvesant Cove Park north of 20<sup>th</sup> St.:
  - seat wall construction
2. E 23<sup>rd</sup> St. Intersection:
  - utility work & floodwall construction
3. West Service Road:
  - floodwall construction
4. E 15th Street between Ave C and FDR Dr. within Con Edison Facility
  - sewer coordination for sub-surface investigation & 12" watermain work
5. FDR Dr. NB exit 7 ramp:
  - ongoing ConEd work in area
  - pile installation and ECS work under FDR within fenced area



# PA2 | Greenway Access Look-ahead - Update

July 2022

- Construction for Stuyvesant Cove Park Phase 2 (south of E20th St) will begin in July (an advisory will be issued)
- the Greenway from E20th St south will remain open until the Greenway from E20th St north opens
- More details and dates to follow



# PA2 | Greenway Access Look-ahead

## Fall 2022

- Greenway from E 20<sup>th</sup> St heading north will reopen
- Greenway from E20th St south will close for Stuy Cove Park Ph. 2 (advisory will be issued)
- More details and dates to follow





# PA2 | Construction Photos



*Asser Levy Playground Opens May 2022!*



# PA2 | Construction Photos



Stuyvesant Cove Park seat wall in progress May 2022



Stuyvesant Cove Park floodwall with elevation markings May 2022

---

# Project Area 1

# PA1 | June 2022 Construction Activities

ALL WORK IS SUBJECT TO CHANGE

1. Coned utility work.  
Soil stabilization along the waterfront and esplanade dismantling.  
Barges have arrived onsite.
2. ConEd utility work near Montgomery Street & South Street.
3. Corlears Hook Park partial closure.  
**Temporary bridge installed Sunday 6/5. Close flagpole area in next week.**  
Prepare Corlears Hook bridge for removal. (June/July TBD)
4. Passive lawn partial closure for temporary bridge and utility work.
5. Delancey Street utility, pile and abutment work.
6. ConEd work in Shared Use Path around E. Houston Street will continue for next 2 months gradually opening. SUP work to E. 10th Street will continue for 6-8 months.
7. ConEd utility upgrades at E. 10<sup>th</sup> Street.
8. Ongoing partial FDR lane closures continue at various locations.  
Slip ramp construction.

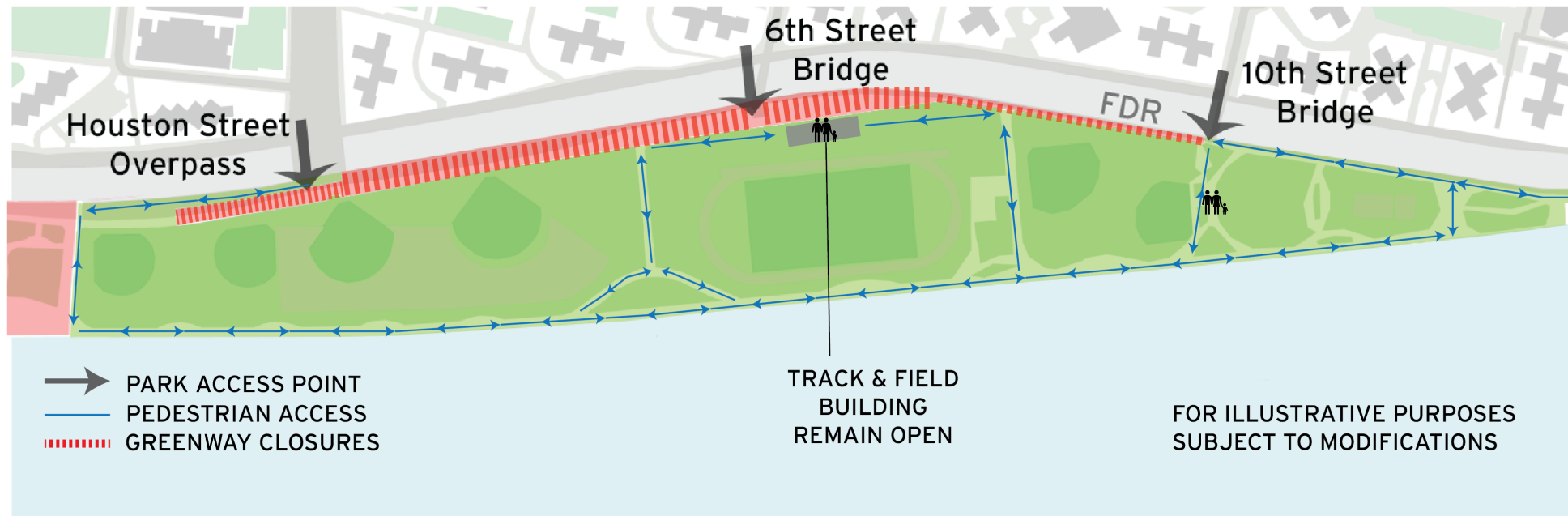
Weekly Bulletins & Advisories are issued with construction activities.



# PA1 | Shared Use Path Houston St. to E. 10<sup>th</sup> St.

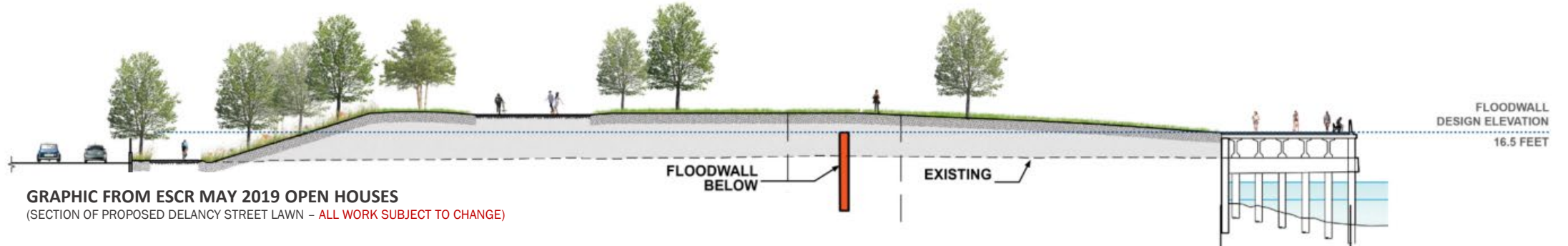
ALL WORK IS SUBJECT TO CHANGE

1. ConEd work in Shared Use Path around E. Houston Street advanced north to E 10<sup>th</sup> Street
2. Access to East River Park is maintained through E. Houston, E. 6<sup>th</sup> and E. 10<sup>th</sup> Street pedestrian bridges
3. Access is maintained to the track & field restrooms
4. Site improvements including additional entrances to amenities, asphaltting paths, drainage, wayfinding signage are being coordinated with Parks.
5. **Current Access Plan below. Updated Access Plan of entire open area of ERP in progress.**



# PA1 | Construction Work Sequencing

ALL WORK IS SUBJECT TO CHANGE



## INLAND

- A. Mobilization & Removals (in progress)
- B. Sewer Replacement & Upgrade
- C. Pile Installation & Concrete Foundation
- D. Concrete Floodwall
- E. Fill & Compaction
- F. Site Elements & Materials (roadway, sidewalks, parks elements)

## WATERFRONT / ESPLANADE

- A. Soil Stabilization
- B. Remove Esplanade
- C. Install new combi-wall & cap wall
- D. Install New Esplanade
- E. Fill (as needed by location)
- F. Site Elements & Materials (esplanade & parks elements)

# PA1 | Construction Photos



#3 Corlears Hook Temporary Pedestrian Bridge assembly in progress May 2022



#3 Corlears Hook Temporary Pedestrian Bridge install June 5, 2022

# PA1 | Construction Photos



*#1 Barges and Crane arrives*



*#1 Esplanade Soil Stabilization in progress May 2022*



# PA1 | Construction Activities through 2022

ALL WORK IS SUBJECT TO CHANGE

1. General utility work.  
Deep sewer excavation.  
Demolition of Tennis Building – TBD
2. Soil stabilization process along waterfront.  
Continue demolition of esplanade & construct new esplanade.  
Barge activities along waterfront.
3. Continue Corlears Hook Park **partial closure**.  
Corlears Hook Bridge removal and reconstruction of new bridge.
4. Passive lawn utility work.
5. Delancey Street utility work & reconstruction of new bridge.
6. **Montgomery Street & Greenway floodwall construction**



#6 Montgomery St. / South St. floodwall and flood gate



#6 Southern Reaches of floodwall along Greenway

# PA1 | Construction Activities through 2022

ALL WORK IS SUBJECT TO CHANGE

1. ConEd work in Shared Use Path around E. Houston Street will continue for next 2 months gradually opening. SUP work to E. 10th Street will continue for 6-8 months.
2. ConEd utility upgrades at E. 10<sup>th</sup> Street in phases.
3. **Houston Street Retaining Wall.**
4. Slip Ramp construction.  
Ongoing partial FDR lane closures continue.

Weekly Bulletins & Advisories are issued with construction activities.



#3 Houston St retaining walls

# ESCR MITIGATION TECHNIQUES - AIR

## We are taking steps to control dust and limit emissions during construction.

To protect air quality, we are taking extensive preventive measures during daily construction activities, and we will increase these measures if monitoring machines indicate additional action is needed.

### Measures to reduce construction vehicle pollution and emissions:

- Use Ultra-Low Sulfur Diesel fuel
- Minimize use of diesel engines, use the best available technology for non-road diesel engines, and restrict truck idling time
- Use barging for large deliveries. One barge has the capacity to divert up to 57 trucks from local roads.

### Measures to reduce and control dust:

- Cover and secure loads for all trucks hauling loose material including sand and dirt
- Use water spray for roads, trucks, truck wheels, excavation areas, and stockpiles
- Cover stockpiles with anchored tarps
- Use extra care, including more frequent application of these measures, during dry periods and high wind periods



# ESCR MITIGATION TECHNIQUES - SOIL

## **We are taking steps to protect NYC waters from construction related sediment pollution.**

To mitigate stormwater pollution, we are taking extensive measures during daily construction activities. These activities are standard in the construction industry and are **regulated by NYSDEC and NYCDEP.**

### **New York State Department of Environmental Conservation (NYSDEC) State Pollution Discharge Elimination System (SPEDES) Permit Program:**

- Prevent petroleum contaminants and sediment from entering the sewer system (ex. using settling tanks)
- Monitoring volume of water entering the sewer system
- Utilize previously identified and approved discharge locations

### **New York City Department of Environmental Protection (DEP) Stormwater Pollution Prevention Plan (SWPPP) manages and mitigates construction pollution through:**

- Hay bales and silt barriers cover storm drains and prevent soil particles from entering the sewer system and East River
- Silt fences to prevent soil particles from leaving the site
- Turbidity curtains to trap shoreline and incidental sediment from entering the East River
- Soil stabilization techniques including construction staging, tarps, and hay mats
- Cover stockpiles with anchored tarps, spray construction site with water, and cover all truck loads leaving the site to prevent dust emissions
- Frequent SWPPP inspections

# ESCR MITIGATION TECHNIQUES - SOIL



*Silt Fence at Corlears Hook Park*



*Silt Barrier along Esplanade*



*Turbidity Curtain at removal of Embayment Esplanade*



### East Side Coastal Resiliency

The East Side Coastal Resiliency (ESCR) Project is a coastal protection initiative, jointly funded by the City of New York and the federal government, aimed at reducing flood risk due to coastal storms and sea level rise on Manhattan's East Side from East 25th Street to Montgomery Street. The boundaries of this project correspond with the natural "pinch-points" in the 100-year floodplain: areas where the land is higher along the coastline, making it easier to close the system off from water entering from the north and south. The project design integrates flood protection into the community fabric, improving waterfront open spaces and access, rather than walling off the neighborhood. Construction on the East Side Coastal Resiliency project will begin in Fall 2020 and continue through 2025.

 <b>Construction Progress</b>	 <b>Resiliency &amp; Flood Protection</b>	 <b>Project Background &amp; Goals</b>	 <b>Project Design</b>
<b>Construction Notices</b> View our most recent community presentations for updates as we prepare for upcoming construction activities.	<b>Resiliency and Flood Protection</b> Learn more about ESCR's resiliency and the forward-thinking flood protection measures being implemented to protect 110,000 New Yorkers from the impacts of climate change.	<b>Project Background and Goals</b> Read about the history and background of ESCR, and the goals driving this technically complex infrastructure project.	<b>Project Design</b> From flood protection measures to bike lanes and ball fields, the ESCR project is improving open spaces and access in the Lower East Side while strengthening the city's coastline.

# NEED MORE INFORMATION?

## VISIT US AT: [www.nyc.gov/escr](http://www.nyc.gov/escr)

