

# East Side Coastal Resiliency Construction Update

CB3 Parks Committee Meeting  
Virtual Meeting  
April 14, 2022

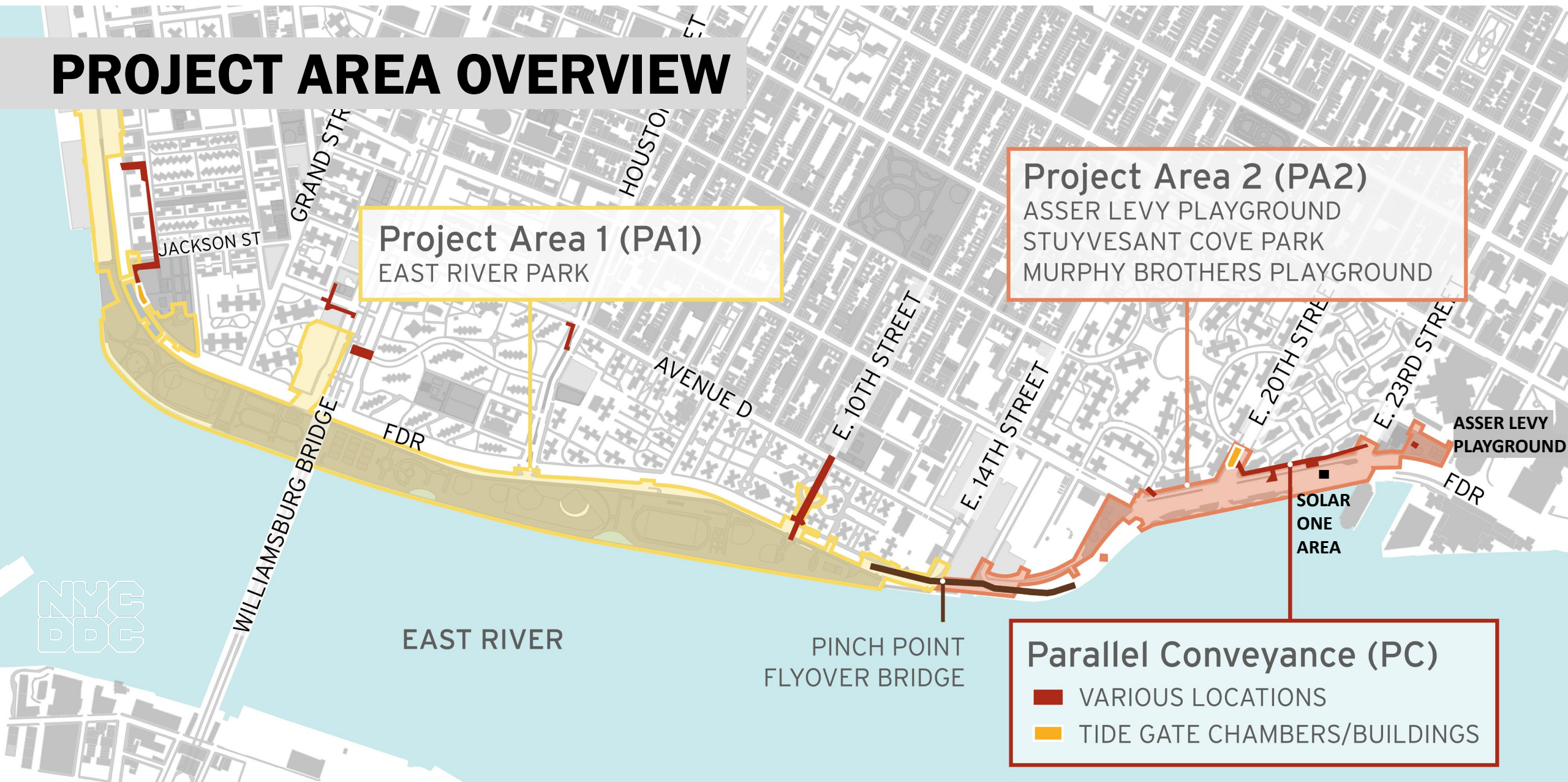


Mayor's Office of  
Resiliency

# HIGHLIGHTS

- Overview of Contracts
  - Project Area 2
  - Project Area 1
- Environmental Compliance & Local Law 72
- What We've Heard

# PROJECT AREA OVERVIEW



# OVERVIEW OF CONTRACTS

## Project Area 1 (PA1)

- Notice to Proceed (NTP) issued to contractor August 16, 2021
- partial park closure south of Stanton Street & Greenway closure
- partial closure of Corlears Hook Park

## Project Area 2 (PA2)

- in construction on phase 2
  - Asser Levy Playground, Stuyvesant Cove Park at E 20<sup>th</sup> Street north to Solar One Area
  - first flood gate installed
  - over 900 ft of floodwall installed

## Parallel Conveyance (PC)

- bid opened 2/10/2022
- preliminary results can be viewed here:  
<https://www1.nyc.gov/site/ddc/contracts/Preliminary-Bid-Results.page>
- April 29, 2022, separate meeting scheduled with DEP to discuss PC
- potentially fall 2022 construction start
- contract duration is approximately 4 years

---

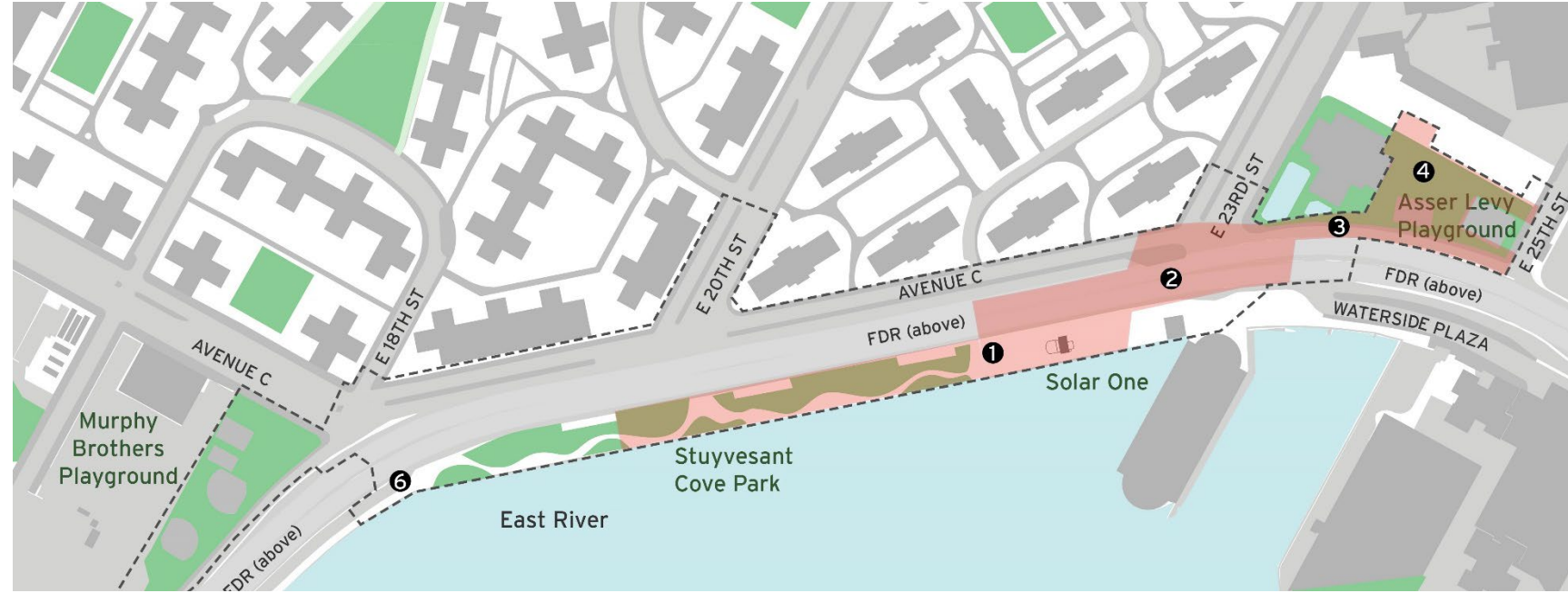
# Project Area 2



# PA2 | CONSTRUCTION PROGRESS

ALL WORK IS SUBJECT TO CHANGE

1. Stuyvesant Cove Park north of 20<sup>th</sup> St.:
  - floodwall construction
2. E 23<sup>rd</sup> St. Intersection:
  - utility work & floodwall construction
3. West Service Road:
  - floodwall construction
4. Asser Levy Playground:
  - Playground equipment assembly & final park restoration
5. E 15th Street between Ave C and FDR Dr. within Con Edison Facility
  - sewer reconstruction/coordination for sub-surface investigation
6. FDR Dr. NB exit 7 ramp:
  - ongoing ConEd work in area
  - pile installation and ECS work under FDR within fenced area





# PA2 | CONSTRUCTION PHOTOS



*Asser Levy Playground – playground installation and floodwall April 2022*



---

# Project Area 1



# PA 1 | UPCOMING CONSTRUCTION ACTIVITIES

ALL WORK IS SUBJECT TO CHANGE

- APRIL / MAY:

1. Shallow clearing and grubbing activities & utility work continue in the closed area of park.
2. ConEd utility work near the Ferry Landing and at Montgomery Street & South Street
3. Corlears Hook Park partial closure to facilitate construction activities starting. Activities to prepare the bridge for dismantling ongoing.
4. Passive lawn upcoming activities include preparation for temporary bridge and upcoming utility work.
5. Delancey Street utility work ongoing. Delancey Street sidewalk closure continues; South Street sidewalk is open.
6. ConEd work in Shared Use Path around E. Houston Street will continue in this area into the summer and begin to move north
7. Ongoing partial FDR lane closures continue.

Weekly Bulletins & Advisories are issued with construction activities.



# PA 1 | UPCOMING CONSTRUCTION ACTIVITIES

ALL WORK IS SUBJECT TO CHANGE

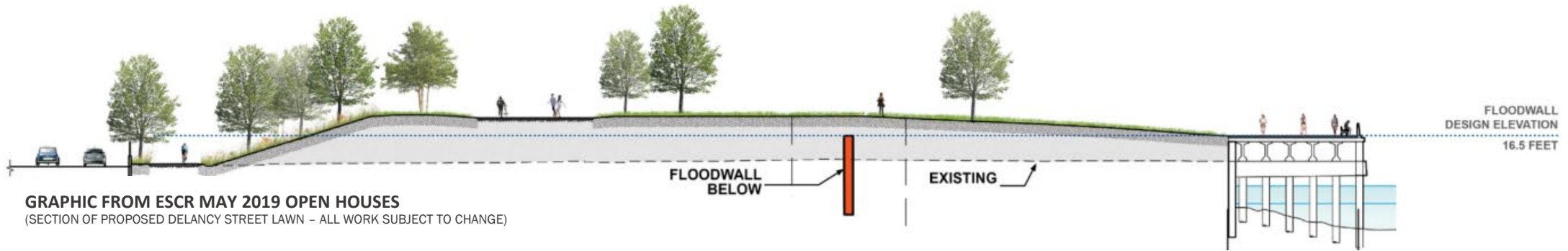
- **THROUGH 2022:**

1. Start deep sewer excavation and continue general utility work (including ConEd) in the closed area of park.
2. Start soil stabilization process along waterfront and continue with demolition of the esplanade, and installation of new esplanade.
3. Continue Corlears Hook Park partial closure and Corlears Hook Bridge removal once temporary bridge is in place.
4. Passive lawn upcoming activities include preparation for temporary bridge and upcoming utility work.
5. Delancey Street utility work ongoing and start reconstruction of new bridge.
6. ConEd work in Shared Use Path around E. Houston Street will continue to move north
7. Ongoing partial FDR lane closures continue.

Weekly Bulletins & Advisories are issued with construction activities.



# PA1 | CONSTRUCTION SEQUENCE AT A GLANCE



## INLAND

- A. Mobilization & Removals
- B. Sewer Replacement & Upgrade
- C. Pile Installation & Concrete Foundation
- D. Concrete Floodwall
- E. Fill & Compaction
- F. Site Elements & Materials (roadway, sidewalks, parks elements)

## WATERFRONT / ESPLANADE

- A. Soil Stabilization
- B. Remove Esplanade
- C. Install new combi-wall & cap wall
- D. Install New Esplanade
- E. Fill (as needed by location)
- F. Site Elements & Materials (esplanade & parks elements)

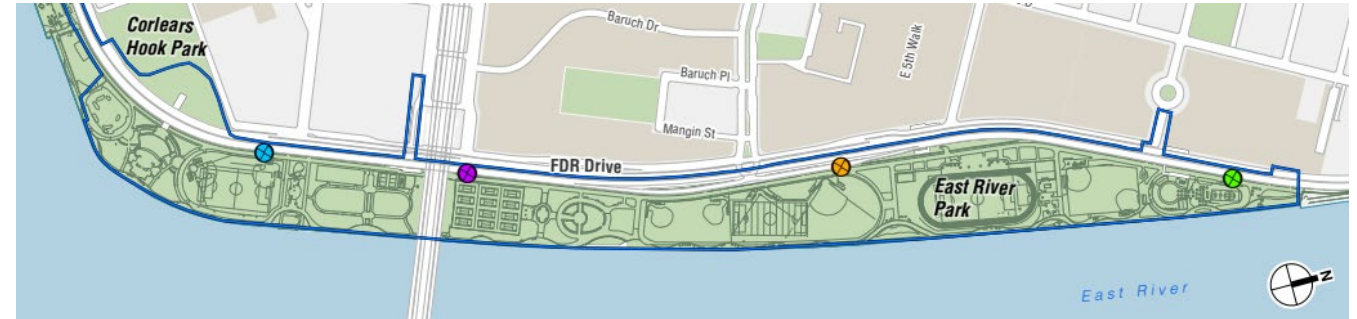


# PA1 | FDR SLIP RAMPS

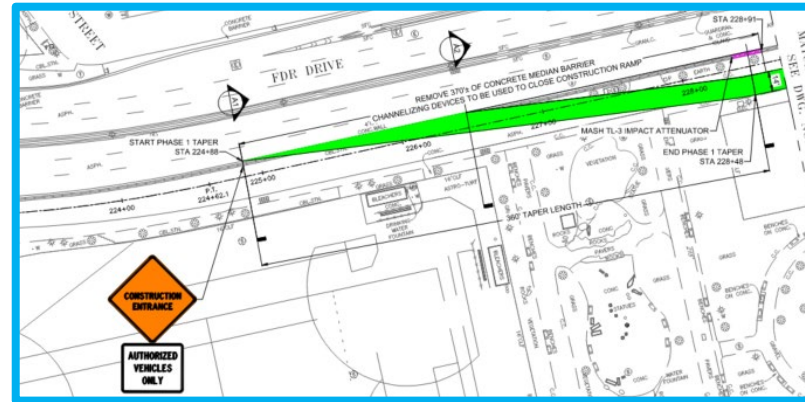
- improved efficiency provided by additional access/egress
- no new or different significant adverse effects (construction transportation, air quality, noise and public health) per FEIS

## when using slip ramps:

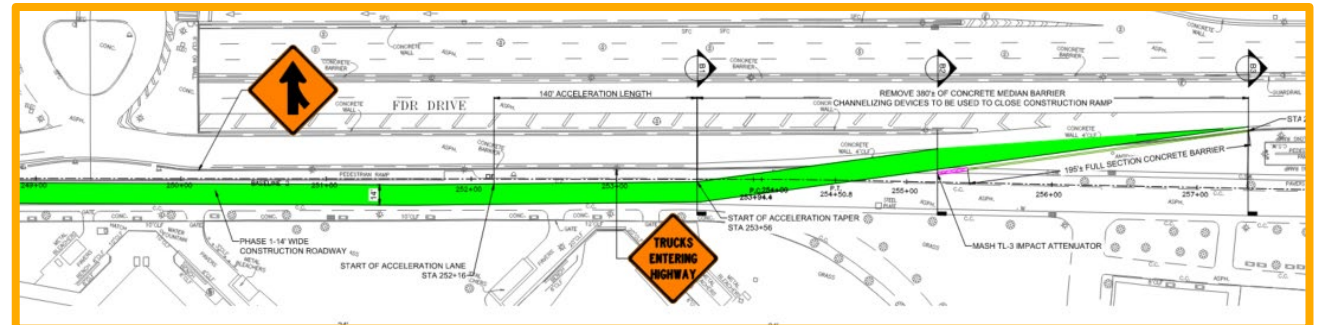
- trucks will **enter** the construction site at a new construction entrance onto the shared use path **just north of the amphitheater**
- trucks will **exit** the construction site onto the FDR at a location off the shared use path **just north of Houston Street**
- in phase 2 of the project when work moves north, the exit ramp will shift north
- Technical Memo to the FEIS can be found on the ESCR website here:  
[https://www1.nyc.gov/assets/escr/downloads/pdf/15DPR013M\\_Technical\\_Memorandum\\_04072022.pdf](https://www1.nyc.gov/assets/escr/downloads/pdf/15DPR013M_Technical_Memorandum_04072022.pdf)



Existing and Proposed Construction Vehicle Access/Egress Points - Montgomery Street



Phase One Entrance north of Amphitheater



Phase One Exit north of E. Houston Street



# CONED ACTIVITIES FOR ESCR PROJECT

- The Contractor is performing coordinated work for ConEd as part of the ESCR Contract
- This work is funded by ConEd
- ConEd provides for their own inspection with oversight by PMCM and DDC
- ConEd work is in compliance with all local and state regulations
- In certain circumstances ConEd may have to prepare areas for work or may perform work in-house

---

# Environmental Compliance

# ENVIRONMENTAL COMPLIANCE - General

- multi- tiered environmental oversight (agencies, PMCM, environmental subconsultants)
- soil sampled during design
- contractor screens and samples soil prior to excavation to determine how soil is disposed of
- in conformance with all city, state and federal laws for
  - monitoring
  - handling
  - disposal



Photo-Ionization Detector (PID)

# ENVIRONMENTAL COMPLIANCE - Terminology

- Soil is characterized to determine if it can be re-used on site, or how and where it must be disposed
  - Non-Contaminated – can be reused on site as backfill if it meets other gradation requirements
    - Does not exhibit exceedances of DEC Restricted Residential Soil Cleanup Objectives (SCOs)
    - Does not exhibit elevated Photo-Ionization Detector (PID) readings, subsequently confirmed by laboratory analysis
    - Does not exhibit visual evidence of contamination such as the presence of staining or discoloration
    - Does not exhibit Petroleum, MGP waste, and/or chemical odors
    - Does not exhibit physical evidence of coal ash, municipal solid waste, construction and demolition debris, or dredged spoils
  - Contaminated Non-Hazardous – cannot be reused on site as backfill
    - Exhibit one or more of the characteristics above.
    - Must be disposed of in accordance with local, state, and federal regulations
  - Hazardous – cannot be reused on site as backfill
    - Soils showing exceedances of ignitability, corrosivity, or reactivity Regulatory Levels for Hazardous Waste as per the Resources Conservation and Recovery Act (RCRA), 6 New York Codes, Rules, and Regulations (NYCRR) Part 371, or 40 Code of Federal Regulations (CFR) Section 261
    - Must be disposed of in accordance with local, state, and federal regulations



# ENVIRONMENTAL COMPLIANCE – Local Law 72

- Local Law 72 <https://www1.nyc.gov/site/ddc/contracts/LeadInSoilProtocol.page>
  - 59 soil borings were taken from a predetermined grid
  - 1 sample returned with elevated levels of lead (5.11 mg/L – standard is 5.00mg/L)
  - contractor has taken additional borings to delineate the localized extents of the lead
  - excavation will not occur until all laboratory samples have been reviewed and accepted by DDC OEHS and disposal facility
- Removal and Disposal Protocol under Local Law 72
  - contractor will follow all local, state, and federal regulations, including:
    - ongoing perimeter air monitoring for dust
    - localized work-zone monitoring for dust and volatile organic compounds (VOCs)
    - stop work if concentration of organic vapors exceeds 5 ppm over site background
  - excavated soil will be loaded directly onto a truck/container and taken off-site for disposal
  - trucks will be covered securely with tarp before leaving the site
  - trucks will be examined to ensure soil adhering to wheels or under carriage is removed prior to leaving the site

# PA1 | AIR QUALITY MONITORS LOCATIONS



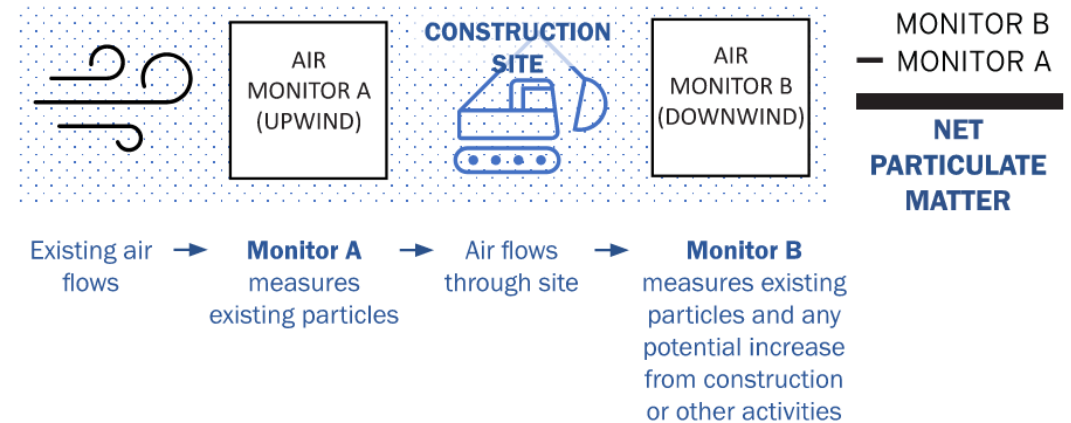
## WHAT ARE WE MEASURING?

**Particulate Matter (PM)**, or particle pollution, is a term for the solid particles and liquid droplets found in the air.

### MEASURED SIZES:

**PM 2.5:** smaller particles typically from vehicle emission  
**PM 10:** larger particles typically from dust

- **Monitoring machines** are on site to measure particles from construction vehicle emissions and dust as well site conditions such as wind speed and temperature.
- These machines are **placed strategically** along the edge of active construction activities.
- Some machines monitor existing conditions and others measure the potential increase of impact from construction.



# WHAT WE'VE HEARD

- **PA1 lighting**
  - Parks has installed solar panel lighting on the shared use path
  - The contractor is working with DOT on ferry lighting and E Houston Street path lighting.
- **ballfield entrances**
  - Parks is assessing the ballfield entrances
- **park security**
  - NYPD can access the park 24 hours a day from the Montgomery Street entrance.
  - Parks PEP spot patrols the park throughout the day and night. Parks is not aware of an uptick in crime in this area and maintains regular communications with NYPD Community Affairs.
- **tennis house**
  - Parks and DDC are working together to salvage select elements of the Tennis House prior to demolition. Elements removed are currently being stored by DDCs contractor. When removal is complete, Parks will pick up the materials and store them in a Parks facility.
  - response to CAG letters: <https://www1.nyc.gov/site/escr/project-updates/cag-inquiry-responses.page>



# ESCR EARTH DAY RAIN BARREL PARTNERSHIP WITH DEP

This Earth Day, the East Side Coastal Resiliency (ESCR) Community Engagement Team is partnering with the NYC Department of Environmental Protection (NYC DEP) to provide free rain barrels to local schools, gardens and community groups.

## DEP rain barrels:

- <https://www1.nyc.gov/site/dep/whats-new/rain-barrel-giveaway-program.page>
- They can store 55 – 60 gallons of water
- Weight is approximately 20 – 23 lbs.
- Dimensions are approximately 23 inches wide and 38 inches tall



Rain barrels capture stormwater and hold it for later use such as on gardens or indoor plants. Collecting runoff in rain barrels reduces the amount of water entering storm sewers, helps reduce ponding and flooding on local streets, and provides a sustainable source of water for your garden.

- Reach out to the ESCR CCLs at [ESCRCCCL1@ddccr.com](mailto:ESCRCCCL1@ddccr.com)





The East Side Coastal Resiliency (ESCR) Project is a coastal protection initiative, jointly funded by the City of New York and the federal government, aimed at reducing flood risk due to coastal storms and sea level rise on Manhattan's East Side from East 25th Street to Montgomery Street. The boundaries of this project correspond with the natural "pinch-points" in the 100-year floodplain: areas where the land is higher along the coastline, making it easier to close the system off from water entering from the north and south. The project design integrates flood protection into the community fabric, improving waterfront open spaces and access, rather than walling off the neighborhood. Construction on the East Side Coastal Resiliency project will begin in Fall 2020 and continue through 2025.

## Project Design

From flood protection measures to bike lanes and ball fields, the ESCR project is improving open spaces and access in the Lower East Side while strengthening the city's coastline.

