

East Side Coastal Resiliency Construction Update

CB3 Parks Committee Meeting

Virtual Meeting

March 10, 2022



HIGHLIGHTS

- Community Resources & Outreach
- Work With Us Update
- Overview of Contracts
- What We've Heard

COMMUNITY RESOURCES

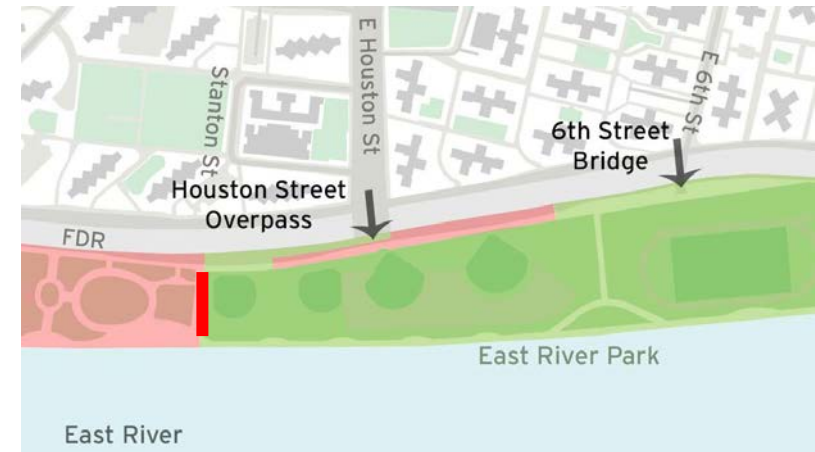
- **bilingual CCLs**
 - PA1: Joyce (Mandarin) and Sonia (Spanish) ESCRCCCL1@ddccr.com
 - Inquiry Tool: www.nyc.gov/escr/contact
- **community presentations**
 - Community Board 3 and 6
 - Community Advisory Group (CAG)
 - Tenant Association Meetings
 - Community Board District Cabinet Meetings
 - Other meetings as requested
- **summarized website information (quick links):** in progress
- **ESCR environmental monitoring page**
 - <https://www1.nyc.gov/site/escr/project-updates/environmental-monitoring.page>
- **emergency preparedness | OEM**
 - <https://www1.nyc.gov/site/escr/contact/emergency-preparedness.page>

OUTREACH | DECORATIVE MESH FENCING PANELS



- Panels are onsite and will be posted to the ESCR website:

<https://www1.nyc.gov/site/escr/community-engagement/decorative-construction-fencing-panels.page>



COMMUNITY OUTREACH



8:36 AM, Mar 8

Deposited a new message:
"You're not gonna escape me. And I don't appreciate you hanging up on me. You didn't answer my questions. You're destroying. Now. A second park. You people are disgusting. And you should all be shot. Go to hell."
Click here: to listen to full voice message.

HIRING VIRTUAL RESOURCES EVENT

- View presentation here:
https://www1.nyc.gov/assets/escr/downloads/pdf/20220216_ESCR_Winter_Info_Session_and_Resource_Fair_Presentation.pdf

EMPLOYMENT AND CONTRACTING OPPORTUNITIES

For individuals seeking Career Opportunities:

- ESCR Work With Us Website: <https://www1.nyc.gov/site/escr/contact/work-with-us.page>
- Career Discovery NYC: <https://careerdiscovery.cityofnewyork.us/>

For M/WBE's exploring possible capacity building opportunities:

- DDC Mentor Program: <https://www1.nyc.gov/site/ddc/mwbe/mentoring-program.page>
- City Contracting Opportunities: <https://www1.nyc.gov/site/sbs/businesses/contracting-opportunities.page>

M/WBE and Section 3 Business Resources:

- Get Certified as MWBE Business: <https://www1.nyc.gov/site/sbs/businesses/certify-with-the-city.page>
- Register as a Section 3 Business Entity: <https://www1.nyc.gov/site/nycha/business/section3-business-concern-information.page>
- Contract Financing Loan Fund: <https://www1.nyc.gov/nycbusiness/article/contract-financing-loan-fund>

TRAINING OPPORTUNITIES

- Career Discovery NYC Pre-Apprenticeship: <https://careerdiscovery.cityofnewyork.us/train/construction-worker/>
- Construction Site Safety Training: <https://careerdiscovery.cityofnewyork.us/discover/construction-worker/>
- Lower East Side Employment Network (LESEN): <https://www.lesemploy.org/p/what-we-do.html>
- Good Old Lower East Side (GOLES): <https://www.goles.org>



Work With Us

EAST SIDE COASTAL RESILIENCY

ESCR Winter Virtual Information Session & Resource Fair

**Wednesday, February 16, 2022
4:00pm-7:00pm**

The East Side Coastal Resiliency (ESCR) project is a coastal protection initiative, jointly funded by the City of New York and the federal government, aimed at reducing flood risk due to coastal storms and sea level rise on Manhattan's East Side from East 25th Street to Montgomery Street.

Learn about the project, training, hiring and subcontracting opportunities related to the ESCR Project from the project team and local career support leaders.

During the first portion of the event, learn about programs and resources from:


- NYC Department of Design and Construction, Office of Diversity & Industry Relations (NYCDDC ODRI)
- Program and Construction Management Team (PACMT)
- General Contractors (GM)
- NYC Department of Small Business Services (SBS)
- Lower East Side Employment Network (LESEN)

Then engage with local career support leaders and industry representatives in the second portion of the event. Pre-register for the **breakout sessions** which interest you most:

- Strategies for Successful Employment + Upcoming Opportunities
- Apprenticeship Opportunities in Construction
- Training Opportunities

Pre-register for this event and be the first to sign up for our breakout session conversations. <https://bit.ly/ESCRInfoSession>

To learn more about working with the East Side Coastal Resiliency (ESCR) team, and the event please visit: <https://www1.nyc.gov/site/escr/contact/work-with-us.page>



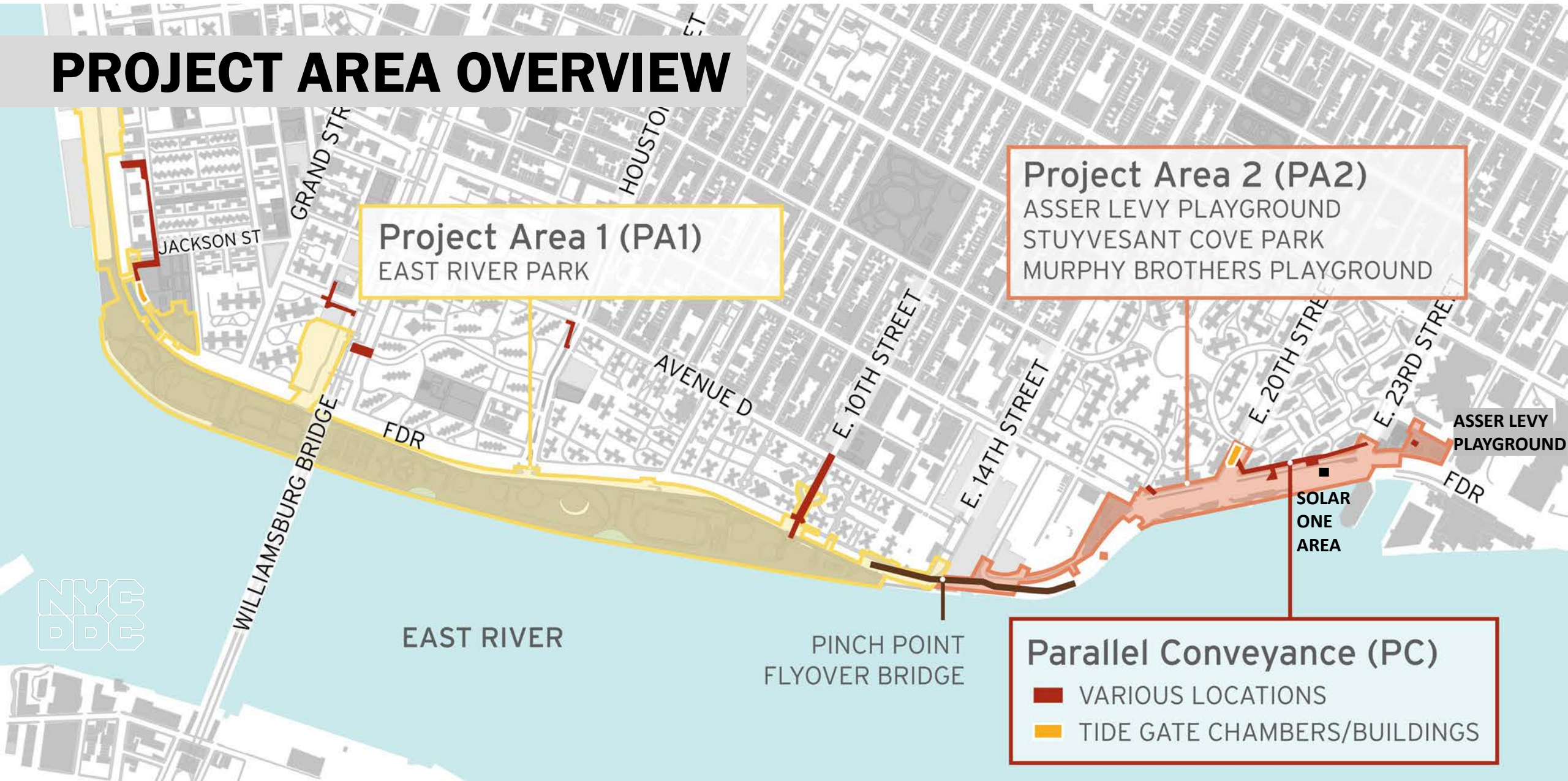
East Side Coastal Resiliency
www1.nyc.gov/escr

NYC Department of Design and Construction
Office of Community Outreach & Notification

NYC Department of Small Business Services
NYC

NYC Department of Design and Construction
NYC

PROJECT AREA OVERVIEW



OVERVIEW OF CONTRACTS

Project Area 1 (PA1)

- Notice to Proceed (NTP) issued to contractor August 16, 2021
- partial park closure south of Stanton Street & Greenway closure
- bridge replacement activities at Delancey Street

Project Area 2 (PA2)

- in construction on phase 2
 - Asser Levy Playground, Stuyvesant Cove Park at E 20th Street north to Solar One Area
 - first flood gate installed
 - over 650 ft of floodwall installed

Parallel Conveyance (PC)

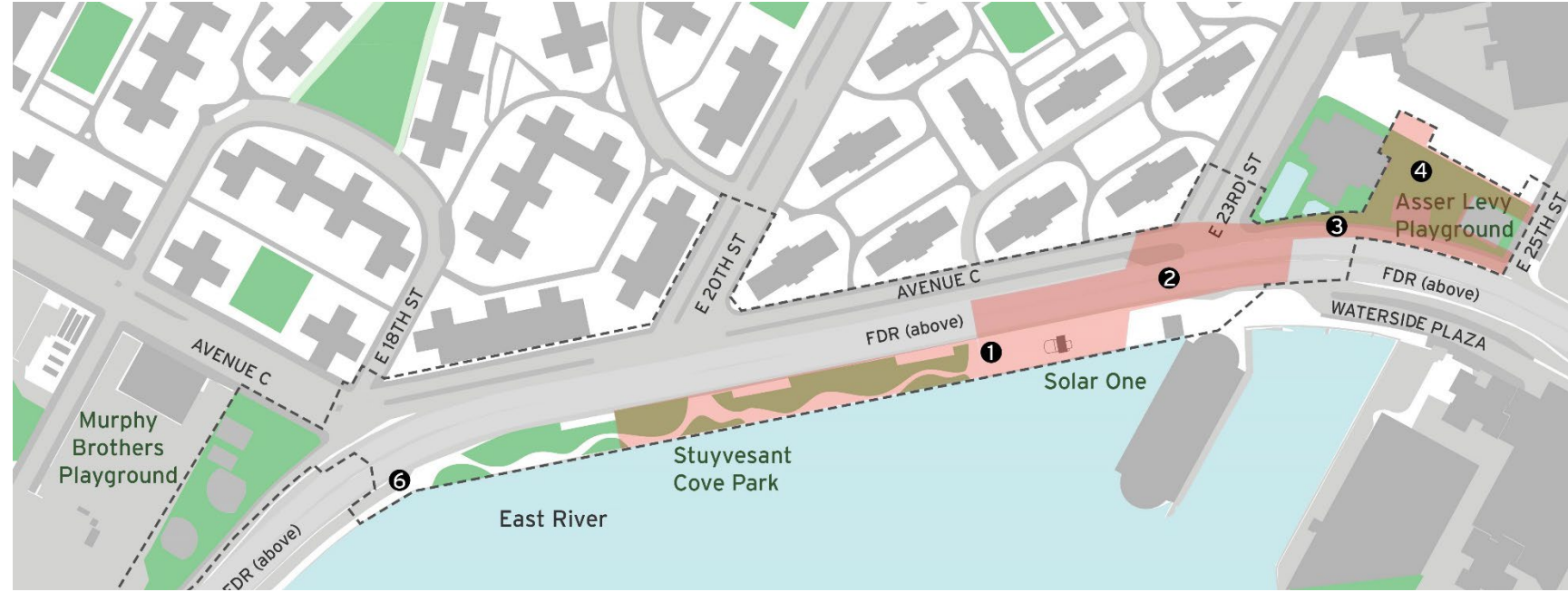
- bid opened 2/10/2022
- preliminary results can be viewed here:
<https://www1.nyc.gov/site/ddc/contracts/Preliminary-Bid-Results.page>

Project Area 2

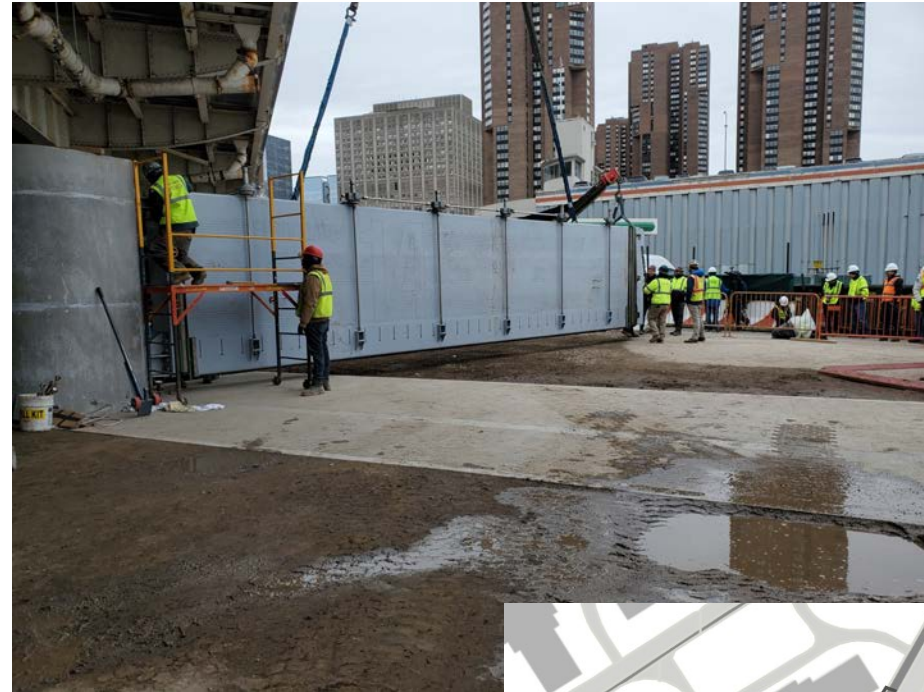
PA2 | CONSTRUCTION PROGRESS

ALL WORK IS SUBJECT TO CHANGE

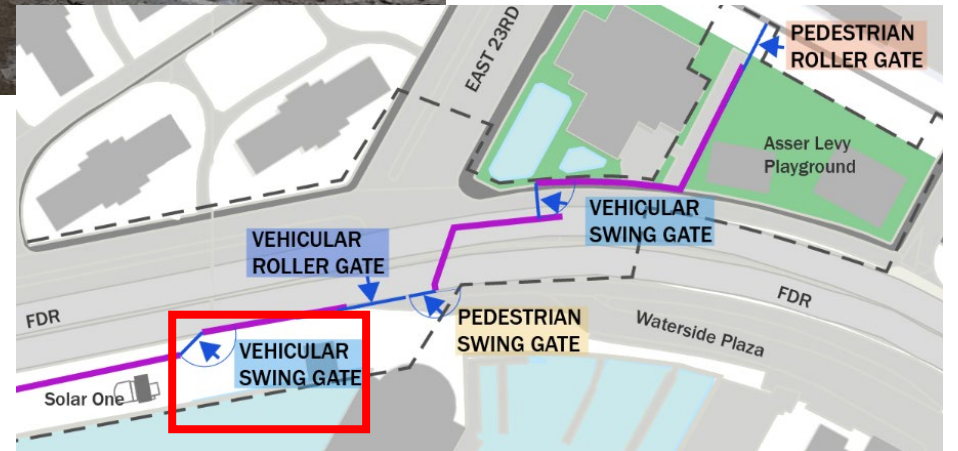
1. Stuyvesant Cove Park north of 20th St.:
 - floodwall construction
2. E 23rd St. Intersection:
 - utility work & pile installation
3. West Service Road:
 - floodwall construction
4. Asser Levy Playground:
 - floodwall construction & park reconstruction
5. E 15th Street between Ave C and FDR Dr. within Con Edison Facility
 - sewer reconstruction/coordination for sub-surface investigation
6. FDR Dr. NB exit 7 ramp:
 - ECS utility work ongoing



PA2 | CONSTRUCTION PHOTOS



Stuyvesant Cove Park Vehicular Swing Gate install 2/24/2022



Project Area 1

PA 1 | UPCOMING CONSTRUCTION ACTIVITIES

ALL WORK IS SUBJECT TO CHANGE

- February:

1. Shallow clearing and grubbing activities & utility work continue in the closed area of park. Subgrade activities will begin.
2. ConEd utility work near the Ferry Landing and at Montgomery Street & South Street
3. Corlears Hook Park partial closure to facilitate construction activities starting **week of April 4, 2022**
4. Delancey Street Pedestrian Bridge overnight center span removal March 27, 2022. Delancey Street sidewalk closure continues.
5. ConEd work in Shared Use Path around E. Houston Street continues
6. E. 10th Street ConEd utility replacements – date TBD

Weekly Bulletins & Advisories will be issued with construction activities.

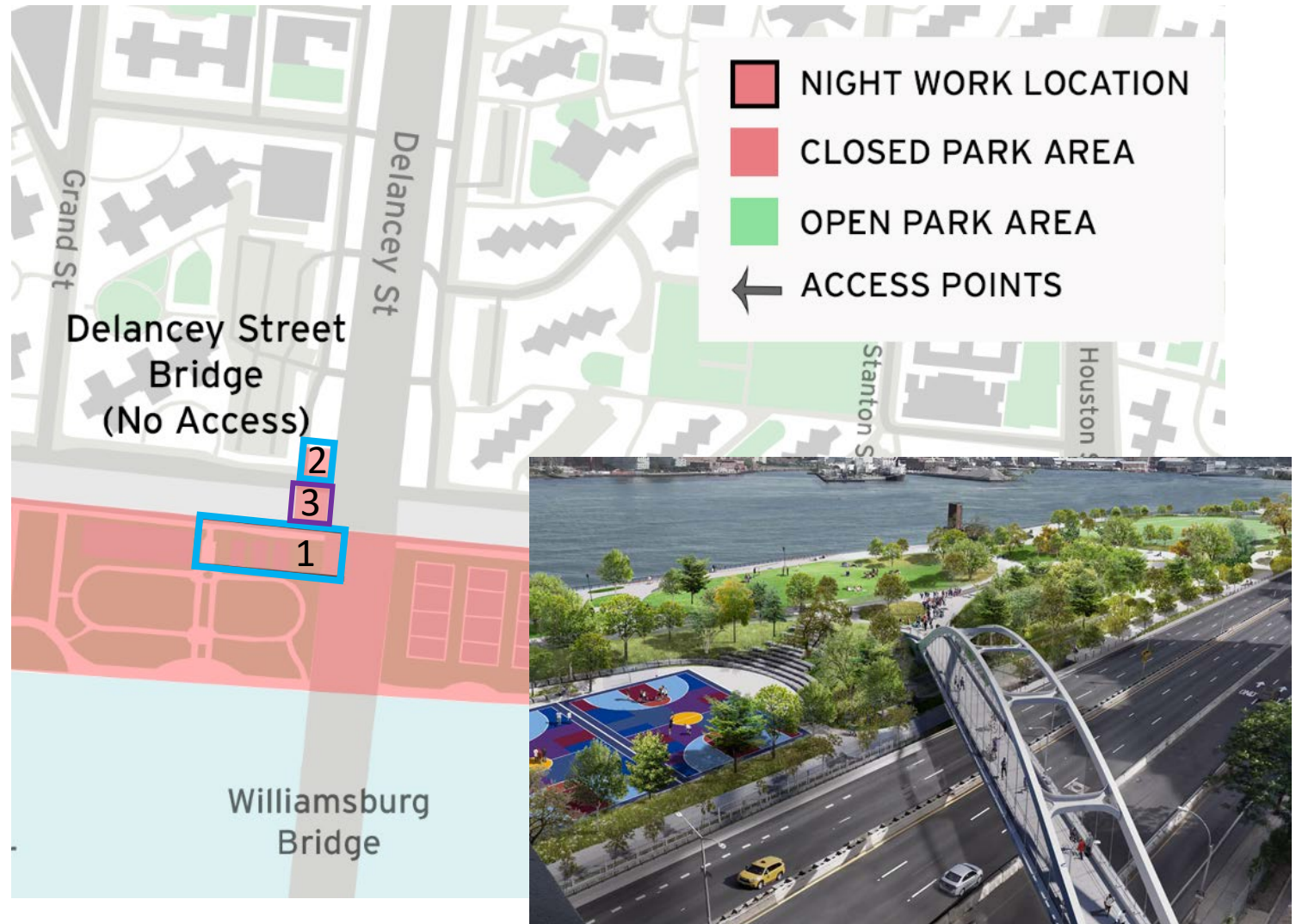


PA 1 | DELANCEY STREET PEDESTRIAN BRIDGE

Dismantling will occur in three parts:

1. Park-side night work 3pm-11:59pm - **COMPLETED**
2. Community side daytime work - **COMPLETED**
3. Overnight preparation of center span for full removal - **ONGOING**
4. FDR full closure to remove center span
UPCOMING
Overnight Sunday March 27, 2022
12:01am – 10:00am

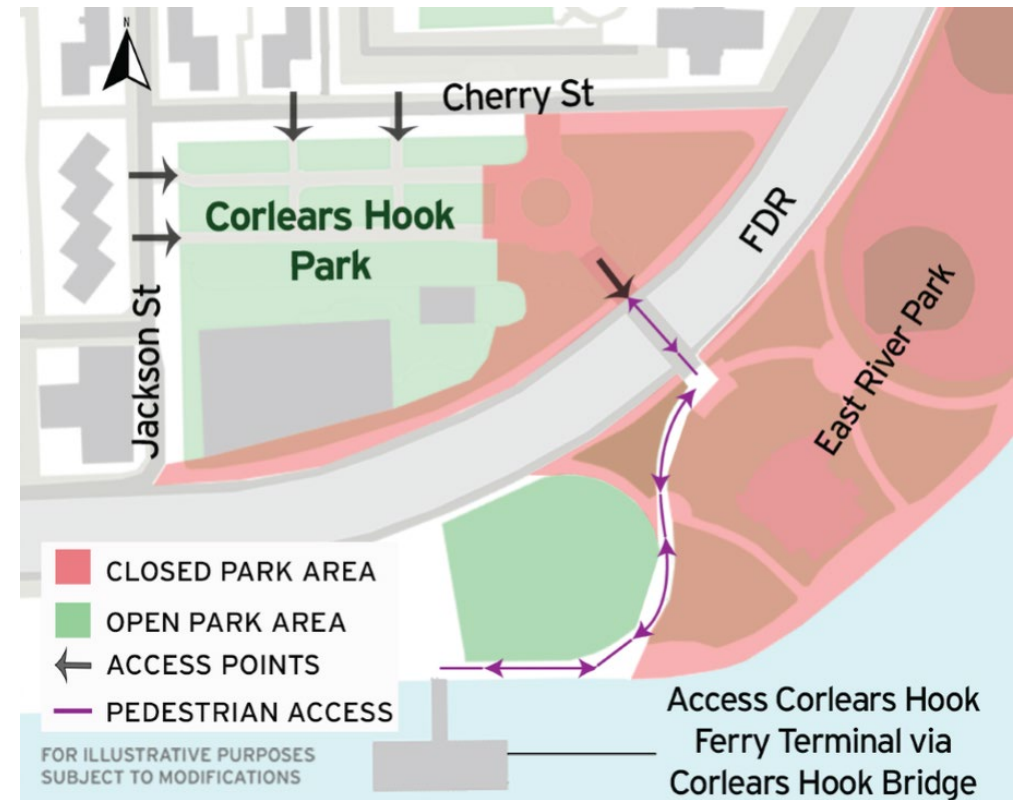
Noise and air monitors are in place. Lead abatement in process for center span.



Delancey Street Pedestrian Bridge rendering (looking southeast)

PA 1 | CORLEARS HOOK PARK

- Partial closure including site preparation to begin the week of April 4, 2022
- To meet FHWA guidelines the Corlears Hook Bridge needs to be raised
- To meet ADA accessibility the approach including the flagpole area required regrading and a shift in the design from a circle to an oval.
- The regrading of the bridge and path effect the surrounding park areas which include the Cherry Hill area and walkway to the south of the bridge.
- Corlears Hook amenities including the dog run, baseball fields, playground, comfort station building and most of the mall area will not be impacted.
- Several small trees will be transplanted. ~30 trees will be removed as approved by Parks. Tree removal permit will be secured closer to date of construction. ~ 75 trees will be planted as well as shrubs and groundcover.
- Access to the ferry will be maintained.
- **Temporary bridge** design and location is still under review. Jackson Street is not feasible due to Pier 42 construction, ramp span length and available space at Jackson Street



ESCR WEBSITE | ENVIRONMENTAL MONITORING

The screenshot shows the NYC ESCR website's "Environmental Monitoring" page. The header includes the NYC logo, "The East Side Coastal Resiliency Project", and navigation links for "About", "Project Updates", "Community Engagement", and "Contact". A search bar is also present. The main heading is "Environmental Monitoring". On the left, there are navigation links for "PA1 Construction Notices", "PA2 Construction Notices", "Environmental Monitoring", "Presentations", "Newsletters", and "Gallery". The main content area includes a paragraph about the importance of community health and safety, followed by a list of four monitoring activities: 1. Air Quality Management Plan, 2. Daily Air Quality Mitigation Techniques, 3. Daily Air Quality Monitoring, and 4. Air Quality oversight by environmental specialists. Below this, it states that monitoring reports currently focus on Project Area 2 and will expand to include Project Area 1 and Parallel Conveyance. There are three download links for air quality monitoring reports, with the first two highlighted in a red box. A blue button labeled "Air Monitoring Factsheet" is also visible. At the bottom, there are social media share icons and a print button.

<https://www1.nyc.gov/site/escr/project-updates/environmental-monitoring.page>

- Quarterly Monitoring Report
- CAG Monitoring Summaries
- CAG Monitoring Factsheet

The infographic titled "Air Quality Monitoring" explains the project's approach to air quality management. It states that community health and safety is a top priority and that the project uses a multi-level approach to Air Quality Management. The infographic is divided into three main sections:

- 1. We are constantly monitoring the air quality around our construction activities.** This section details the use of two monitors: Monitor A (UPWIND) measures existing air flows, while Monitor B (DOWNWIND) measures air flows through the site. It also mentions a "NET PARTICULATE MATTER" monitor that reflects potential increases in pollution. A diagram shows the placement of these monitors relative to existing air flows and construction activities.
- 2. We are taking steps to control dust and limit emissions during construction.** This section lists steps to reduce construction vehicle pollution and emissions (e.g., use of ultra-low sulfur diesel, minimize diesel engines) and steps to reduce and control dust (e.g., cover loads, water spray, stockpiles). A "DID YOU KNOW?" box notes that one large truck can divert up to 57 trucks from local roads. An image of a truck is shown.
- 3. We are guided by federal air quality standards.** This section explains that the project uses a 24-hour time-weighted average (TWA) standard for evaluating particulate matter. It notes that the project evaluates air quality at 15-minute intervals. A diagram shows the relationship between the TWA standard and the 15-minute intervals.

The infographic also includes a "WHAT ARE WE MEASURING?" section defining Particulate Matter (PM) and listing measured sizes (PM 2.5 and PM 10). It concludes by stating that monitoring machines are placed strategically along the edge of active construction activities.

The flowchart titled "Environmental oversight is multi-tiered with checks & balances" illustrates the regulatory and oversight structure for the project. It shows the following entities and their roles:

- NYC Environmental Protection**: Air/Dust/Noise/Water Monitoring.
- NYC Construction Management**: Construction Management.
- NYSDEC**: Contaminated Soil/Water/Air.
- INTE-LINK JOINT VENTURE**: Project and Construction Management (PMCM) Resident Engineering Inspection Services Team.
- PROJECT AREA 2 CONTRACTOR**: Perfetto Contracting Co.
- PROJECT AREA 1 CONTRACTOR**: IPC Resiliency Partners.
- ENVIRONMENTAL SPECIALIST**: PA2- Preferred Environmental Services (PES) will onboard closer to work in MSP areas.
- PA2 ENVIRONMENTAL CONSULTANT**: District Engineering Solutions, Inc.
- PA1 ENVIRONMENTAL CONSULTANT**: SA Engineering.

The flowchart also includes a "quality updates for the community" section, stating that the R Team provides Air Quality Monitoring updates at Community Group (CAG) meetings and through the ESCR Quarterly Air Monitoring Reports. A "Questions?" section provides contact information for the R Team and a QR code to submit an inquiry.


WHAT WE'VE HEARD

- **Tree removals**
 - Parks preliminary approval has been granted for all ESCR tree removals as part of the EIS and contract drawings
 - tree removal applications are required from Parks Forestry during construction for all tree removals. These will be acquired as construction progresses.
- **cars and trucks on esplanade:**
 - Parks vehicles can drive throughout the park
 - other vehicles working in the park are encouraged to stay on the shared use path
- **Houston Street path**
 - working with Parks and construction team on maintenance of these areas

NYC East Side Coastal Resiliency 311 Search all NYC.gov websites

NYC The East Side Coastal Resiliency Project 简体中文 Translate Text-Size

Home About Project Updates Community Engagement Contact Search



**Flood Risk Reduction
Improved Access
Enhanced Open Spaces**

LEARN MORE
Construction on the East Side Coastal Resiliency project will begin in Fall 2020. Learn more about where construction will occur and how to receive updates throughout the project.

East Side Coastal Resiliency

The East Side Coastal Resiliency (ESCR) Project is a coastal protection initiative, jointly funded by the City of New York and the federal government, aimed at reducing flood risk due to coastal storms and sea level rise on Manhattan's East Side from East 25th Street to Montgomery Street. The boundaries of this project correspond with the natural "pinch-points" in the 100-year floodplain: areas where the land is higher along the coastline, making it easier to close the system off from water entering from the north and south. The project design integrates flood protection into the community fabric, improving waterfront open spaces and access, rather than walling off the neighborhood. Construction on the East Side Coastal Resiliency project will begin in Fall 2020 and continue through 2025.

<p>Construction Progress</p>	<p>Resiliency & Flood Protection</p>	<p>Project Background & Goals</p>	<p>Project Design</p>
<p>Construction Notices View our most recent community presentations for updates as we prepare for upcoming construction activities.</p>	<p>Resiliency and Flood Protection Learn more about ESCR's resiliency and the forward-thinking flood protection measures being implemented to protect 110,000 New Yorkers from the impacts of climate change.</p>	<p>Project Background and Goals Read about the history and background of ESCR, and the goals driving this technically complex infrastructure project.</p>	<p>Project Design From flood protection measures to bike lanes and ball fields, the ESCR project is improving open spaces and access in the Lower East Side while strengthening the city's coastline.</p>

NEED MORE INFORMATION?

VISIT US AT:

www.nyc.gov/escr

