

COMMUNITY ADVISORY GROUP (CAG)

Meeting #18

HIGHLIGHTS

- Hiring Virtual Resources Event Recap
- Overview of Contracts
- PA 2 Construction Updates
 - December & January Air Quality Update
- PA1 Construction Update
 - January Air Quality Update
 - Decorative Mesh Panels
 - What We've Heard

HIRING VIRTUAL RESOURCES EVENT

ESCR Winter Virtual Information Session & Resource Fair

- ~30 attendees
- 1/3 from local zip codes

Many thanks to:

- Councilmember Carlina Rivera
- NYC Department of Design and Construction Office of Diversity and Industry Relations (NYCDDC ODIR)
- General Contractors (GCs)
- The Program and Construction Management Team (PMCM)
- NYC Department of Small Business Services (SBS), Workforce1
- Lower East Side Employment Network (LESEN)

Smaller Breakout Sessions included:

- Strategies for Successful Employment + Upcoming Opportunities
- Apprenticeship Opportunities in Construction
- Training Opportunities
- View presentation here:
https://www1.nyc.gov/assets/escr/downloads/pdf/20220216_ESCR_Winter_Info_Session_and_Resource_Fair_Presentation.pdf

Work With Us

East Side Coastal Resiliency
www.nyc.gov/escr

EAST SIDE COASTAL RESILIENCY

ESCR Winter Virtual Information Session & Resource Fair

Wednesday, February 16, 2022
4:00pm-7:00pm

The East Side Coastal Resiliency (ESCR) project is a coastal protection initiative, jointly funded by the City of New York and the federal government, aimed at reducing flood risk due to coastal storms and sea level rise on Manhattan's East Side from East 25th Street to Montgomery Street.

Learn about the project, training, hiring and subcontracting opportunities related to the ESCR Project from the project team and local career support leaders.

During the first portion of the event, learn about programs and resources from:

- NYC Department of Design and Construction, Office of Diversity & Industry Relations (NYCDDC ODIR)
- Program and Construction Management Team (PMCM)
- General Contractors (GM)
- NYC Department of Small Business Services (SBS)
- Lower East Side Employment Network (LESEN)

Then engage with local career support leaders and industry representatives in the second portion of the event. Pre-register for the **breakout sessions** which interest you most:

- Strategies for Successful Employment + Upcoming Opportunities
- Apprenticeship Opportunities in Construction
- Training Opportunities

Pre-register for this event and be the first to sign up for our breakout session conversations.
<https://bit.ly/ESCRInfoSession>

To learn more about working with the East Side Coastal Resiliency (ESCR) team, and the event please visit:
<https://www1.nyc.gov/site/escr/contact/work-with-us.page>

Department of Design and Construction
Office of Community Outreach & Participation

HIRING VIRTUAL RESOURCES EVENT

ESCR Winter Virtual Information Session & Resource Fair Resources:

EMPLOYMENT AND CONTRACTING OPPORTUNITIES

For individuals seeking Career Opportunities

- ESCR Work With Us Website: <https://www1.nyc.gov/site/escr/contact/work-with-us.page>
- Career Discovery NYC: <https://careerdiscovery.cityofnewyork.us/>

For M/WBE's exploring possible capacity building opportunities.

- DDC Mentor Program: <https://www1.nyc.gov/site/ddc/mwbe/mentoring-program.page>
- City Contracting Opportunities: <https://www1.nyc.gov/site/sbs/businesses/contracting-opportunities.page>

M/WBE and Section 3 Business Resources

- Get Certified as MWBE Business: <https://www1.nyc.gov/site/sbs/businesses/certify-with-the-city.page>
- Register as a Section 3 Business Entity: <https://www1.nyc.gov/site/nycha/business/section3-business-concern-information.page>
- Contract Financing Loan Fund: <https://www1.nyc.gov/nycbusiness/article/contract-financing-loan-fund>

TRAINING OPPORTUNITIES

- Career Discovery NYC Pre-Apprenticeship: <https://careerdiscovery.cityofnewyork.us/train/construction-worker/>
- Construction Site Safety Training: <https://careerdiscovery.cityofnewyork.us/discover/construction-worker/>
- Lower East Side Employment Network (LESEN): <https://www.lesemploy.org/p/what-we-do.html>
- Good Old Lower East Side (GOLES): <https://www.goles.org>

OVERVIEW OF CONTRACTS

OVERVIEW OF CONTRACTS

Project Area 1 (PA1)

- Notice to Proceed (NTP) issued to contractor August 16, 2021
- partial park closure south of Stanton Street & Greenway closure

Project Area 2 (PA2)

- in construction on phase 2
 - Asser Levy Playground, Stuyvesant Cove Park at E 20th Street north to Solar One Area
 - over 650 ft of floodwall installed

Parallel Conveyance (PC)

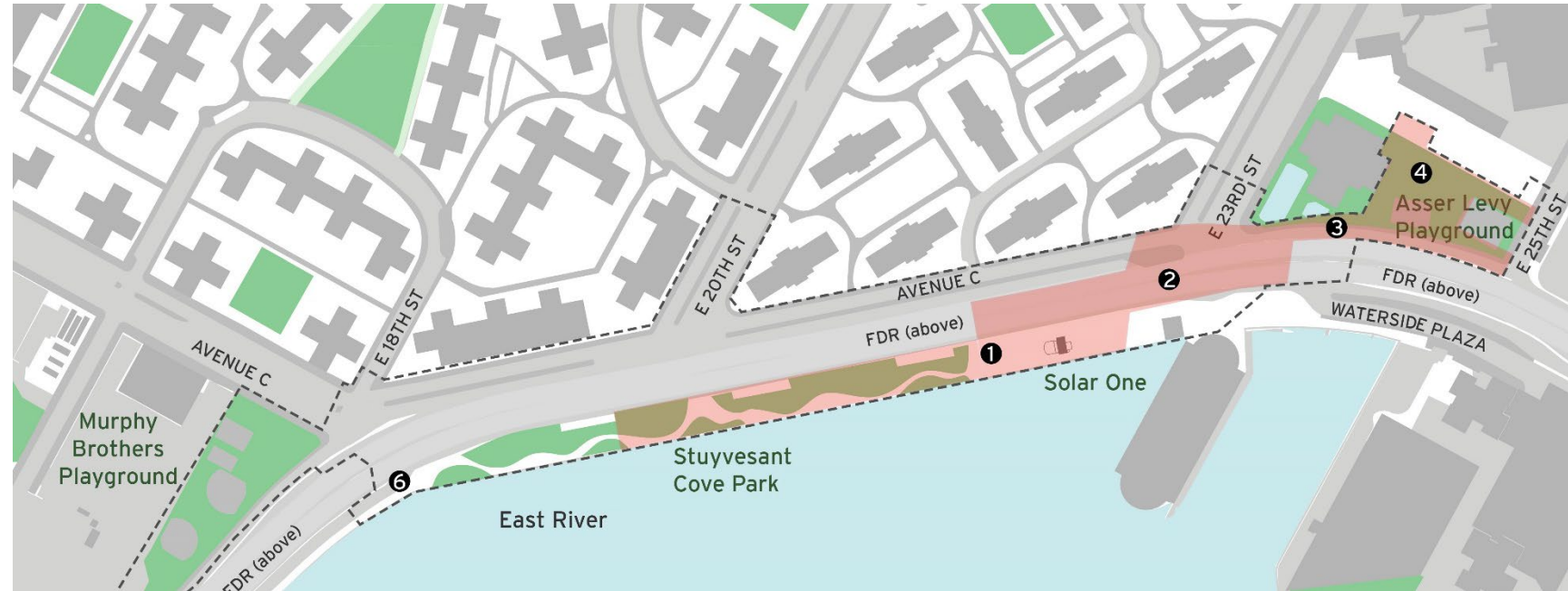
- bid advertised on 11/12/21
- bid opened 2/10/2022
- preliminary results can be viewed here:
<https://www1.nyc.gov/site/ddc/contracts/Preliminary-Bid-Results.page>

PROJECT AREA 2

PA2 | CONSTRUCTION PROGRESS

ALL WORK IS SUBJECT TO CHANGE

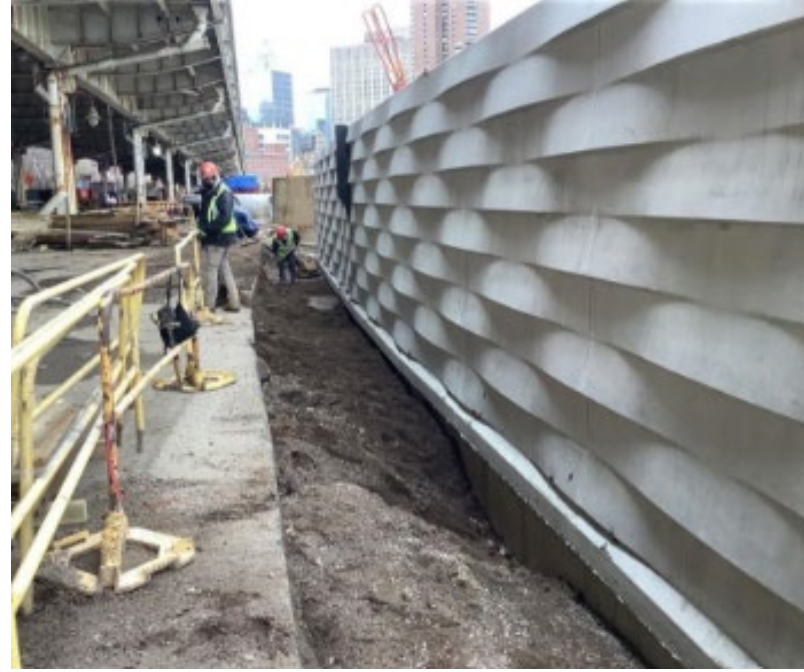
1. Stuyvesant Cove Park north of 20th St.:
 - floodwall construction
2. E 23rd St. Intersection:
 - utility work & pile installation
3. West Service Road:
 - pile installation & floodwall foundation
4. Asser Levy Playground:
 - floodwall foundation & park reconstruction (**handball temp. closure**)
5. E 15th Street between Ave C and FDR Dr. within Con Edison Facility
 - sewer reconstruction/coordination for sub-surface investigation
6. FDR Dr. NB exit 7 ramp:
 - excavate & install sewer structures



PA2 | CONSTRUCTION PHOTOS



Asser Levy Playground handball court reconstruction

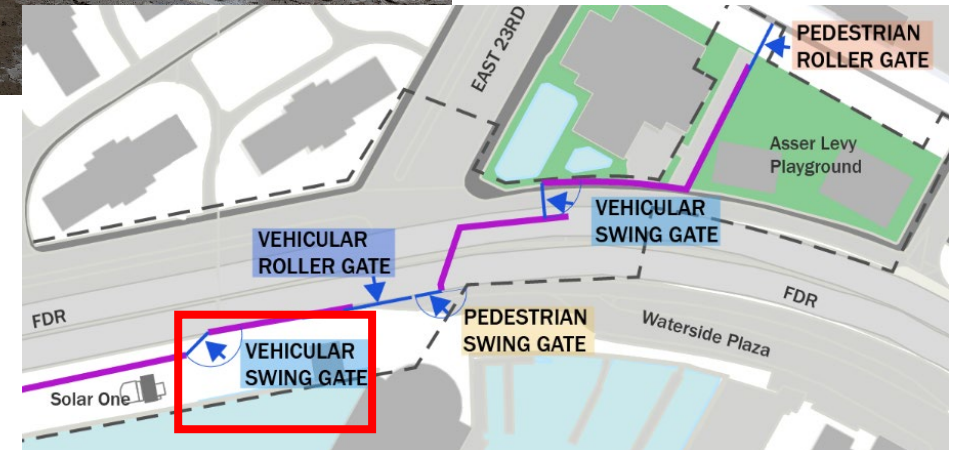


Stuyvesant Cove Park floodwall (looking north)

PA2 | CONSTRUCTION PHOTOS



Stuyvesant Cove Park Vehicular Swing Gate install 2/24/2022



ESCR WEBSITE | ENVIRONMENTAL MONITORING

NYC
The East Side Coastal Resiliency Project

Kreyòl Ayisyen | Translate | Text-Size

Home About **Project Updates** Community Engagement Contact

Search

Environmental Monitoring

PA1 Construction Notices

PA2 Construction Notices

[Environmental Monitoring](#)

Presentations

Newsletters

Gallery

Community health and safety is of the utmost importance to the City of New York, the NYC Department of Design and Construction (NYC DDC), and the East Side Coastal Resiliency (ESCR) team. The ESCR project is committed to providing the community with quarterly air quality monitoring summaries throughout construction. In addition to the monitoring, the team has implemented a multi-level approach to Air Quality Management, described in greater depth within the report, which includes:

1. Air Quality Management Plan
2. Daily Air Quality Mitigation Techniques
3. Daily Air Quality Monitoring
4. Air Quality oversight by environmental specialists

Monitoring reports currently focus on Project Area 2 and will expand to include Project Area 1 and Parallel Conveyance as those projects are onboarded and air monitors are installed.

- **Download First Half 2021 Air Quality Monitoring Report**
This report covers the monitoring period of January 2021-June 2021 for Project Area 2.
- **Download Original Report issued July 1, 2021** (does not include June 2021).
- **Download Second Half 2021 Air Quality Monitoring Report**
This report covers the monitoring period of July 2021-December 2021 for Project Area 2.

Regular air monitoring updates are provided at Community Advisory Group (CAG) Meetings. The summary slides from those meetings have been assembled below:

Download 2021 CAG Air Monitoring Summaries
The ESCR project team provides monthly Air Quality updates at the CAG meetings. The slides have been combined here.

For a quick overview of Air Quality Monitoring for the East Side Coastal Resiliency Project, see the ESCR Air Monitoring factsheet.

Air Monitoring Factsheet

- Quarterly Monitoring Report
- CAG Monitoring Summaries
- CAG Monitoring Factsheet

East Side Coastal Resiliency
www.nyc.gov/escr

Air Quality Monitoring

Community health and safety is extremely important to the City of New York. The East Side Coastal Resiliency (ESCR) project team is ensuring there is very limited impact on nearby air quality as we construct flood protection for New Yorkers on Manhattan's East Side.

1. We are constantly monitoring the air quality around our construction activities.

WHAT ARE WE MEASURING?
Particulate Matter (PM), or particle pollution, is a term for the solid particles and liquid droplets found in the air.

MEASURED SIZES:
PM 2.5: smaller particles typically from vehicle emission
PM 10: larger particles typically from dust

Monitoring machines are placed strategically along the edge of active construction activities.

Monitor A measures existing particles

Monitor B measures existing particles and any potential increase from construction or other activities

NET PARTICULATE MATTER reflects the potential increase in particle pollution directly related to construction activities

NET PARTICULATE MATTER is the standard metric for monitoring and assessment of construction impacts on air quality, as well as compliance with federal limits.

2. We are taking steps to control dust and limit emissions during construction.

Steps to reduce construction vehicle pollution and emissions:

- Use barging for large deliveries
- Restrict truck idling time
- Use Ultra Low Sulfur Diesel fuel
- Minimize use of diesel engines
- Use the best available technology for non-road diesel engines

Steps to reduce and control dust:

- Cover and secure loads for all trucks hauling loose material including sand and dirt
- Use water spray for roads, trucks, truck wheels, excavation areas, and stockpiles
- Cover stockpiles with anchored tarps
- Use extra care, including more frequent application of these measures, during dry and high wind periods

DID YOU KNOW? One barge has the capacity to divert up to 57 trucks from local roads.

These steps are implemented during daily construction activities and are increased if monitoring machines indicate additional action is needed. Visit the ESCR website to view weekly Construction Bulletins and Advisories.

Stakeholders:

- NYSDEC** (Department of Environmental Conservation)
- PMCM** (Project Management and Construction Management)
- PROJECT AREA 1 CONTRACTOR** (IPC Resiliency Partners)
- PA1 ENVIRONMENTAL CONSULTANT** (SA Engineering)

Agencies provide regulatory guidance and approve the Contractors' environmental plans at the start of the contract.

The PMCM team can stop the Contractors' work or withhold payment if they determine that the contractors are not taking appropriate measures to limit particle pollution.

The Contractors are responsible for the safety of their workers and the community surrounding the project site.

The PMCM's environmental specialist is responsible for monitoring work in designated Areas of Concern from historic Manufactured Gas Plants (MGP).

The Contractors' environmental consultants are responsible for monitoring particle pollution and alerting the project team (City, PMCM and Contractor) if particulate matter reaches the Action Level.

For more information, visit the community.

Monitoring updates at Community Advisory Group (CAG) Meetings. Visit the ESCR website to view weekly Construction Bulletins and Advisories.

Questions?

For more information, visit the community. Visit the ESCR website to view weekly Construction Bulletins and Advisories.

For more information, visit the community. Visit the ESCR website to view weekly Construction Bulletins and Advisories.

For more information, visit the community. Visit the ESCR website to view weekly Construction Bulletins and Advisories.

PA2 AQM | DECEMBER UPDATE

Work activities at E23rd Street and Stuyvesant Cove Park focused on pile installation and floodwall foundation construction. At Asser Levy Playground, work focused on park restoration.

The PM daily value (24-hour TWA) did not surpass the PEL for the month of December.

Levels of Particulate Matter surpassed the PEL for 15-min TWA on several occasions:

- **ALP Monitors: December 10, 25, 29, 30 and 31:** elevated PM2.5 readings on December 25-31 were recorded when no construction activity was occurring, either after hours, on the weekend, or during an observed holiday. On December 10, the high readings were recorded during morning rush, when a number of material deliveries were lining up to enter the site. On no occasion did the Net PM surpass the PEL.
- **SO Monitors: December 10:** PM2.5 levels slightly surpassed the PEL for a duration of 18 minutes. The Net PM did not surpass the PEL.
- Construction activity was closely monitored, and dust mitigation techniques were continuously implemented to contain airborne particles due to construction activities.

PA2 AQM | JANUARY 2022 UPDATE

Work activities at E23rd Street and Stuyvesant Cove Park focused on pile installation and floodwall foundation construction. At Asser Levy Playground, work focused on floodwall construction and park restoration.

The PM daily value (24-hour TWA) did not surpass the PEL for the month of January.

Levels of Particulate Matter surpassed the PEL for 15-min TWA on five occasions:

- **ALP Monitors: January 6, 25, and 28:** high PM_{2.5} readings were recorded on January 6 for a 10-minute duration at the end of the work shift and were not attributed to construction activities. PM_{2.5} levels slightly above the PEL were recorded in the morning of January 25 and the afternoon of January 28. On neither occasion did the Net PM exceed the PEL and on the 28th, the higher readings continued after the end of the work shift and were not attributed to construction activities.
- **SO Monitors: January 13 and 27:** PM_{2.5} readings above the PEL were recorded for short durations (under 20 minutes) after construction activities had concluded on both days.
- Construction activity was closely monitored, and dust mitigation techniques were continuously implemented to contain airborne particles due to construction activities.

QUESTIONS

PROJECT AREA 1

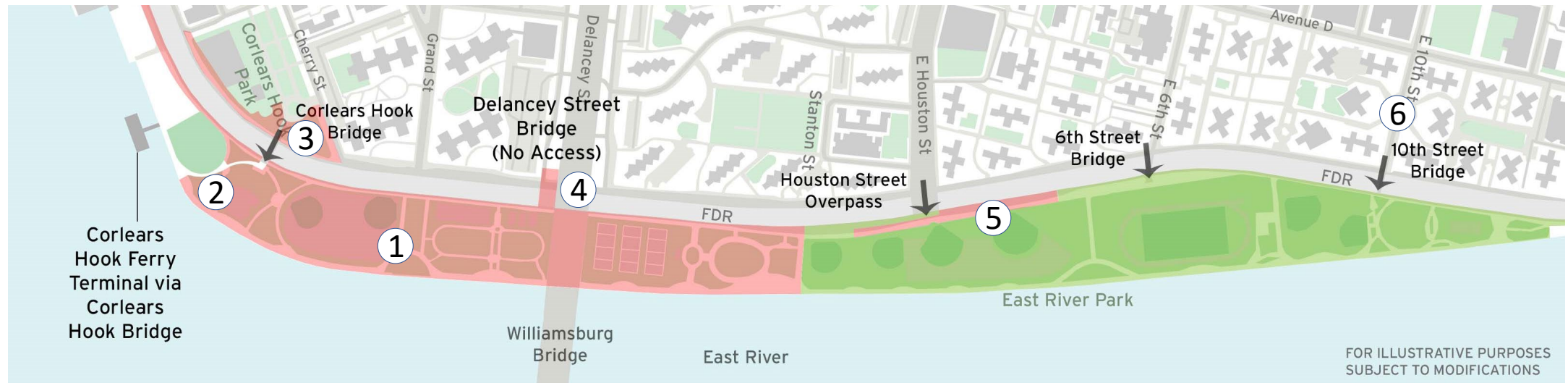
PA 1 | UPCOMING CONSTRUCTION ACTIVITIES

ALL WORK IS SUBJECT TO CHANGE

- February:

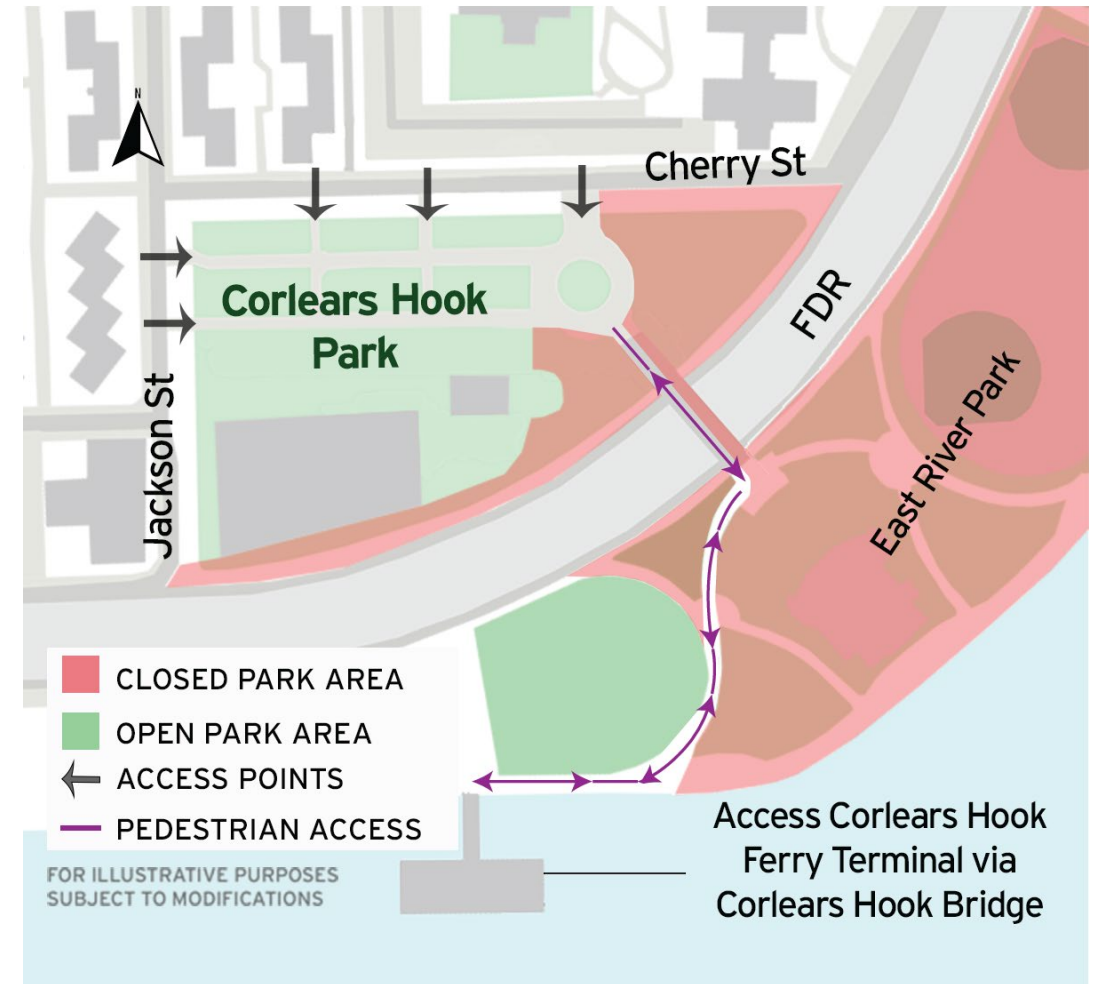
1. Shallow clearing and grubbing activities & utility work continue in the closed area of park. Subgrade activities will begin.
2. ConEd utility work near the Ferry Landing
3. Corlears Hook Park partial closure to facilitate construction activities starting **week of March 7, 2022**
4. Delancey Street sidewalk closure continues
5. ConEd work in Shared Use Path around E. Houston Street continues
6. E. 10th Street ConEd utility replacements – date TBD

Weekly Bulletins & Advisories will be issued with construction activities.



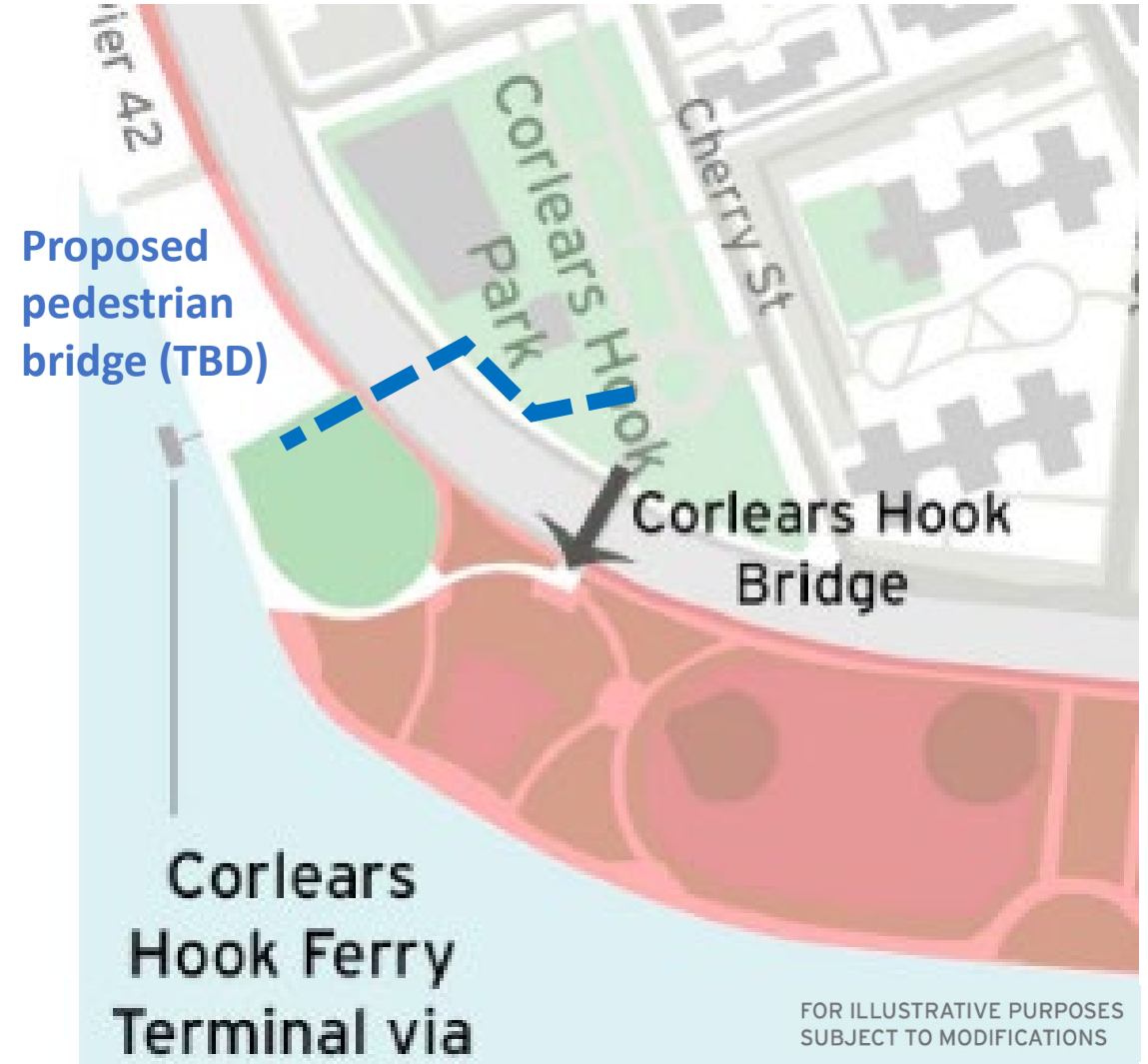
PA 1 | CORLEARS HOOK PARK

- Partial closure including site preparation to begin the week of March 7, 2022
- DDC and Parks met with Friends of Corlears Hook Park to review salvaging of materials
- Access to ferry will be maintained
- Friends of Corlears Hook 1/14/2020 Presentation Link: <https://www1.nyc.gov/assets/escr/downloads/pdf/2020-01-14-Friends-of-Corlears-Hook-Park-Design.pdf>
- Public Design Commission Final Design Presentation 1/30/2020, pages 20 – 24. PDC Link: <https://www1.nyc.gov/assets/escr/downloads/pdf/DDC-f-ESCR-pres-rev-final-given-to-PDC-2020-01-30.pdf>



PA 1 | CORLEARS TEMPORARY PEDESTRIAN BRIDGE

- Scheduled for installation Quarter 1 (Q1) 2022
- Final placement and details of temporary pedestrian bridge are being finalized through several agencies
- Placement was selected due to direct route to ferry, upcoming PC work, upcoming Corlears Hook Park and bridge work and existing utilities
- The proposed location for the temporary bridge is within the limits of the overall construction boundaries for the permanent Corlears Hook Park.
- Bridge will be prefabricated offsite and installed in sections on both sides of the FDR and then the FDR portion last
- Jackson Street is not a viable location due to Pier 42 construction



PA1 | AIR QUALITY MONITORS LOCATIONS



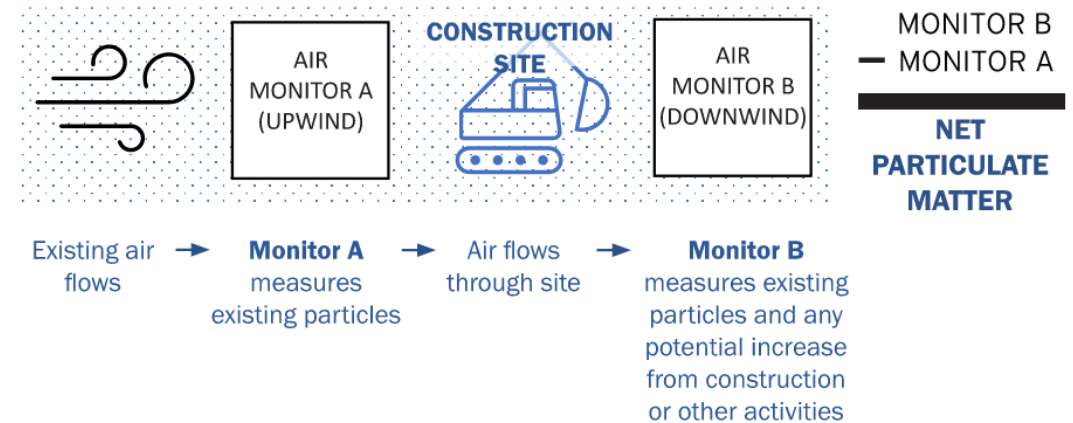
WHAT ARE WE MEASURING?

Particulate Matter (PM), or particle pollution, is a term for the solid particles and liquid droplets found in the air.

MEASURED SIZES:

PM 2.5: smaller particles typically from vehicle emission
PM 10: larger particles typically from dust

- **Monitoring machines** are on site to measure particles from construction vehicle emissions and dust as well site conditions such as wind speed and temperature.
- These machines are **placed strategically** along the edge of active construction activities.
- Some machines monitor existing conditions and others measure the potential increase of impact from construction.



PA1 AQM | JANUARY 2022 UPDATE

Work activities East River Park focused on site preparation, including clearing and grubbing, and removals as well as the removal of the Delancey Street Pedestrian Bridge Ramps towards the middle to end of the month. Two air quality monitors were installed for the entire month of January. Three additional monitors were installed towards the end of the month, and a sixth monitor was installed in February.

The PM daily value (24-hour TWA) did not surpass the PEL for the month of January.

Levels of Particulate Matter surpassed the PEL for 15-min TWA on two occasions:

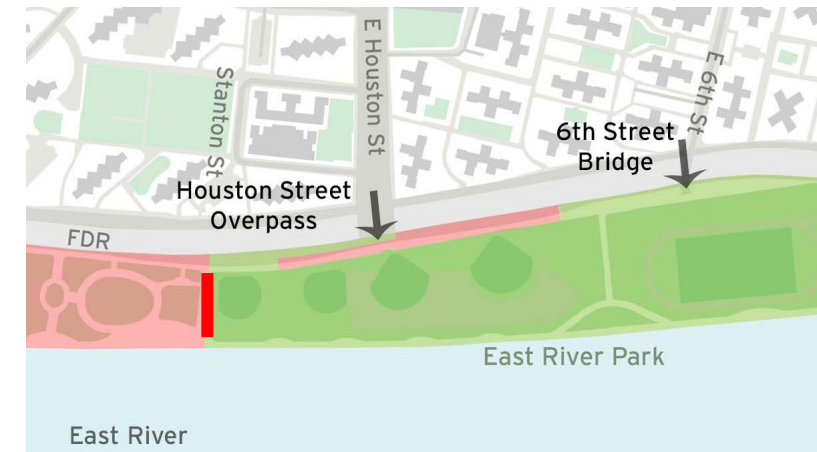
- **Air Monitor 1:** high PM2.5 readings were recorded on the morning of January 25 for two short durations (up to 15 minutes), and for one 15-minute duration on January 29, after hours (3:45 am).
- Construction activity was closely monitored, and dust mitigation techniques were continuously implemented to contain airborne particles due to construction activities.

PA1 | DECORATIVE MESH FENCING PANELS



- Panels are onsite and will be posted to the ESCR website:

<https://www1.nyc.gov/site/escr/community-engagement/decorative-construction-fencing-panels.page>



WHAT WE'VE HEARD

- **Tennis House:**
 - OMB was not available for this meeting. Additional questions can be submitted through Pratt.
- **cars and trucks on esplanade:**
 - Parks vehicles can drive throughout the park
 - other vehicles working in the park are encouraged to stay on the shared use path
- **erosion and sediment control:**
 - actively monitoring sediment controls onsite including tracking pad and other mitigation measures
- **tree removals:**
 - determined in the design phase based on construction impacts in coordination with Parks
 - Any tree removals or impacts on ANY project must be permitted as part of a Parks Forestry permit. Forestry permits are not posted onsite but anyone who is interested can learn more about what must be submitted to NYC Parks as part of a Tree Work Permit by visiting the Tree Work Permit website <https://www.nycgovparks.org/services/forestry/tree-work-permit>
- **passive lawn:**
 - Parks will assess conditions of all fields once the weather warms
 - There are some stands of trees that have been retained for the time being around the passive lawn for lawn users. As part of ESCR, the entire passive lawn area will ultimately be elevated for resiliency and to meet the grades of the flood protection system

QUESTIONS