

East Side Coastal Resiliency Construction Update

CB3 Parks Committee Meeting
Virtual Meeting
February 10, 2022



Mayor's Office of
Resiliency

HIGHLIGHTS

- Community Resources
- Work With Us Update
- Overview of Contracts
- Project Area 2
- Project Area 1
 - Construction Updates
 - Environmental Items
 - What We've Heard

ESCR Resources

COMMUNICATION RESOURCES

- **bilingual CCLs**
 - PA1: Joyce (Mandarin) and Sonia (Spanish) ESCRCCL1@ddccr.com
 - PA2: Nadine ESCRCCL2@ddccr.com
 - Inquiry Tool: www.nyc.gov/escr/contact
- **updated website**
 - www.nyc.gov/escr
- **Community Advisory Group webpage**
 - <https://www1.nyc.gov/site/escr/project-updates/community-advisory-group.page>
 - roster: <https://www1.nyc.gov/assets/escr/downloads/pdf/CAG-roster-7-26-21.pdf>
 - presentations and live recordings: <https://www1.nyc.gov/site/escr/project-updates/community-advisory-group.page>
 - highlights of each meeting for reference
- **summarized website information (quick links): in progress**
- **parks interim recreation (neighborhood recreational resources) map**
 - <https://www.nycgovparks.org/planning-and-building/planning/neighborhood-development/east-side-coastal-resiliency/map>

Presentations

PA1 Construction Notices

PA2 Construction Notices

Environmental Monitoring

Presentations

Newsletters

Gallery

Share

Print

Community Advisory Group (CAG)

The Community Advisory Group (CAG) is an independent, community-based entity serving in an advisory role to the project team during the ESCR construction phase. The CAG will serve as an ongoing vehicle for information-sharing, bridging the community and the project team. Per the CAG guidelines, the public is invited to observe these meetings only; no questions or comments will be taken from the public during the meetings.

Visit the **Community Events** page for upcoming CAG meetings and links for livestreaming.

View official City responses to **CAG inquiries**.

The ESCR Air Quality Monitoring Reports and CAG Air Monitoring Summary Slides can be found on the **ESCR Environmental page**.

• CAG Virtual Meeting #17

Thursday January 6, 2021

[Download 1/06/2021 Presentation](#)

[Stream the Live Recording](#)

Highlights: PA2 Asser Levy Progress, PA2 November Air Quality, PA1 January Activities, DOT Open Streets, PA1 Environmental Monitoring Overview, Salvaged Materials

• CAG Virtual Meeting #16

Thursday December 2, 2021

[Download 12/02/2021 Presentation](#)

[Stream the Live Recording](#)

[Download 12/02/2021 Summary](#)

Highlights: PA2 Stuyvesant Cove Park gate work, PA2 September & October Air Quality, PA1 December Activities, PA1 Pedestrian Detours, PA1 Amenity Overview, Parks Interim Recreation, PA1 Environmental Monitoring Overview, Salvaged Materials



HIRING VIRTUAL RESOURCES EVENT

ESCR Winter Virtual Information Session & Resource Fair

Wednesday, February 16, 2022, 4:00pm-7:00pm

Learn about hiring and subcontracting opportunities related to the East Side Coastal Resiliency (ESCR) Project:

- NYC Department of Design and Construction Office of Diversity and Industry Relations (NYCDDC ODIR)
- General Contractors (GCs)
- The Program and Construction Management Team (PMCM)
- NYC Department of Small Business Services (SBS), Workforce1
- Lower East Side Employment Network (LESEN)

(Many thanks to all!)

Smaller Breakout Sessions will include:

- Strategies for Successful Employment + Upcoming Opportunities
- Apprenticeship Opportunities in Construction
- Training Opportunities
- **REGISTER!!!** <https://bit.ly/ESCRInfoSession>
- Take the survey!



Work With Us

EAST SIDE
COASTAL
RESILIENCY

ESCR Winter Virtual Information Session & Resource Fair

**Wednesday, February 16, 2022
4:00pm-7:00pm**

The East Side Coastal Resiliency (ESCR) project is a coastal protection initiative, jointly funded by the City of New York and the federal government, aimed at reducing flood risk due to coastal storms and sea level rise on Manhattan's East Side from East 25th Street to Montgomery Street.

Learn about the project, training, hiring and subcontracting opportunities related to the ESCR Project from the project team and local career support leaders.

During the first portion of the event, learn about programs and resources from:

- NYC Department of Design and Construction, Office of Diversity & Industry Relations (NYCDDC ODIR)
- Program and Construction Management Team (PMCM)
- General Contractors (GM)
- NYC Department of Small Business Services (SBS)
- Lower East Side Employment Network (LESEN)

Then engage with local career support leaders and industry representatives in the second portion of the event. Pre-register for the **breakout sessions** which interest you most:

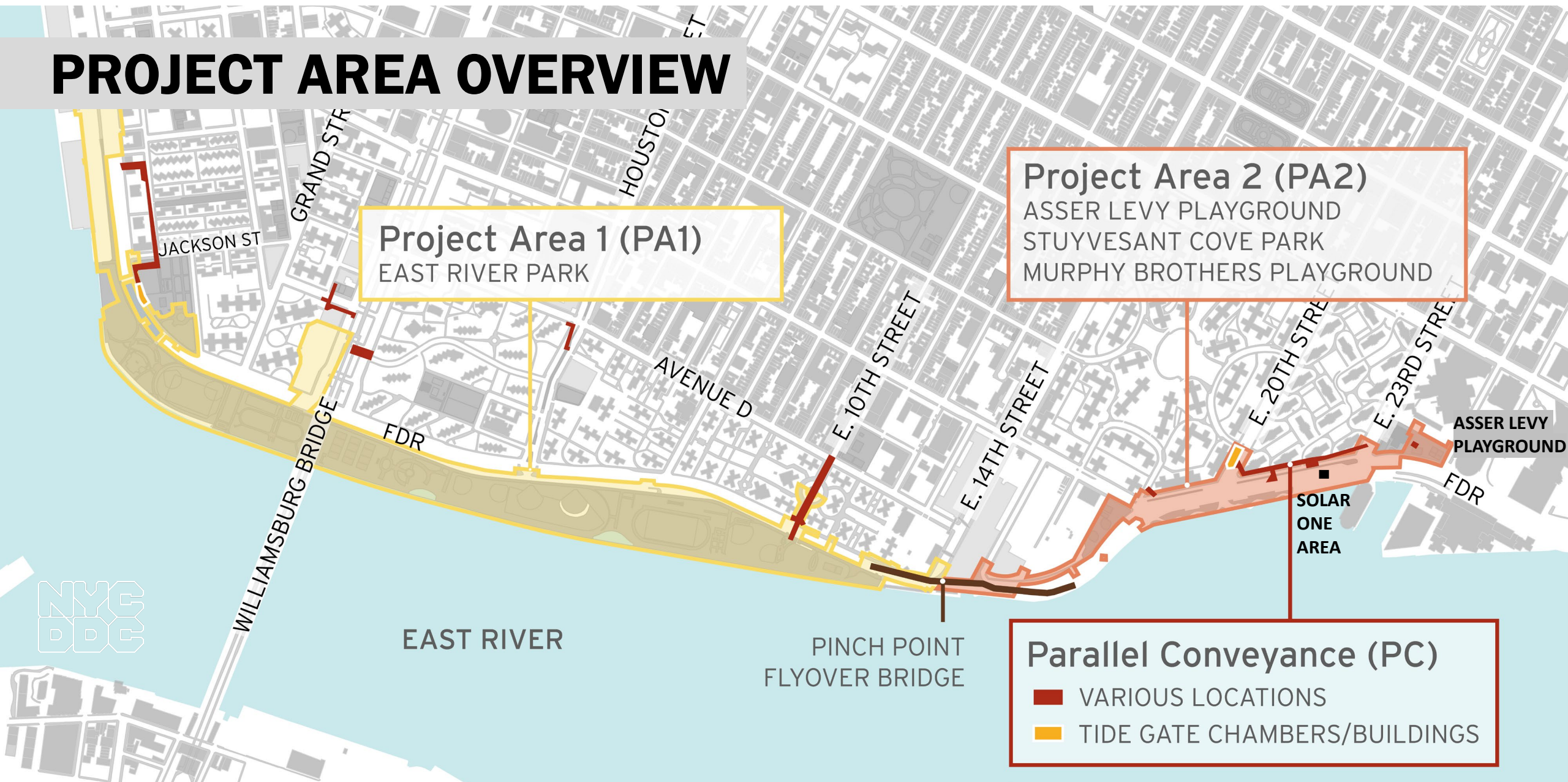
- Strategies for Successful Employment + Upcoming Opportunities
- Apprenticeship Opportunities in Construction
- Training Opportunities

Pre-register for this event and be the first to sign up for our breakout session conversations.
<https://bit.ly/ESCRInfoSession>

To learn more about working with the East Side Coastal Resiliency (ESCR) team, and the event please visit:
<https://www1.nyc.gov/site/escr/contact/work-with-us.page>

Department of
Design and
Construction
Office of Community Outreach & Participation

PROJECT AREA OVERVIEW



OVERVIEW OF CONTRACTS

Project Area 1 (PA1)

- Notice to Proceed (NTP) issued to contractor August 16, 2021
- partial park closure south of Stanton Street & Greenway closure
- bridge replacement activities at Delancey Street

Project Area 2 (PA2)

- in construction on phase 2
 - Asser Levy Playground, Stuyvesant Cove Park at E 20th Street north to Solar One Area
 - over 650 ft of floodwall installed

Parallel Conveyance (PC)

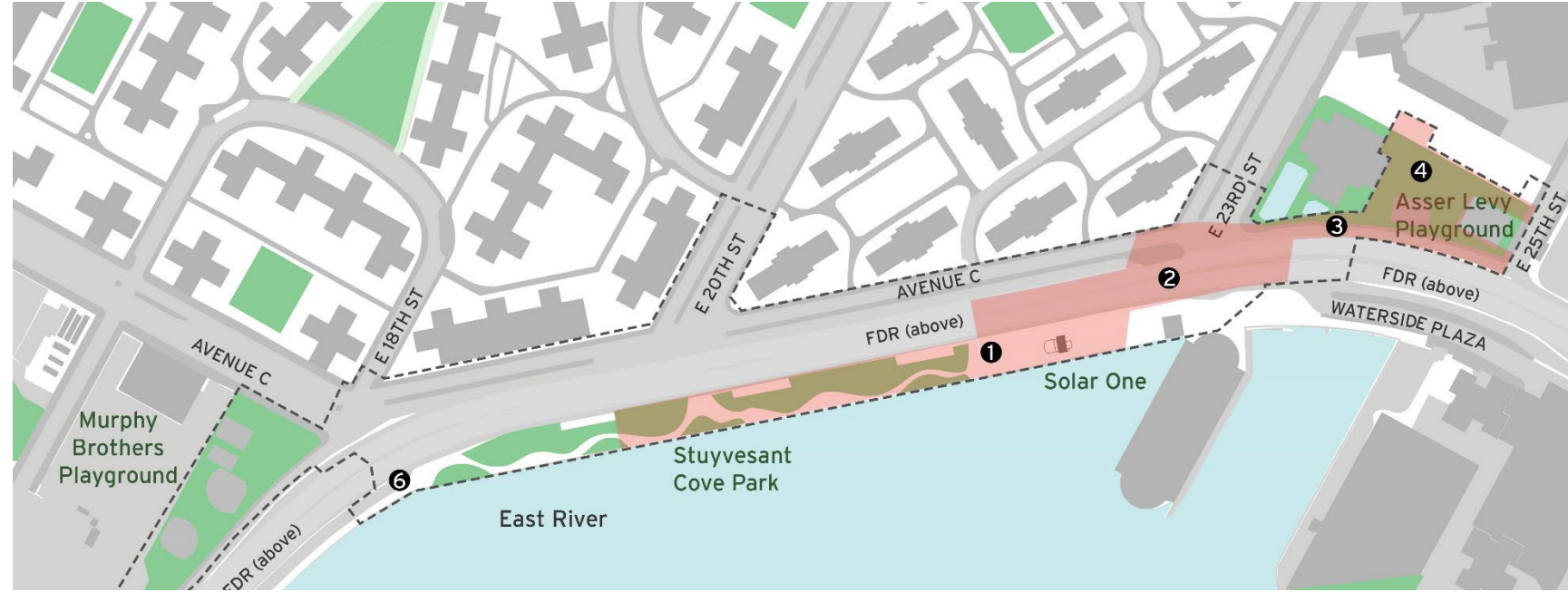
- bid advertised on 11/12/21
- bid opened today 2/10/2022
- preliminary results can be viewed here:
<https://www1.nyc.gov/site/ddc/contracts/Preliminary-Bid-Results.page>

Project Area 2

PA2 | CONSTRUCTION PROGRESS

ALL WORK IS SUBJECT TO CHANGE

1. Stuyvesant Cove Park north of 20th St.:
 - floodwall construction
2. E 23rd St. Intersection:
 - utility work & pile installation
3. West Service Road:
 - pile installation & floodwall foundation
4. Asser Levy Playground:
 - floodwall foundation & park reconstruction (**handball temp. closure**)
5. E 15th Street between Ave C and FDR Dr. within Con Edison Facility
 - sewer reconstruction/coordination for sub-surface investigation
6. FDR Dr. NB exit 7 ramp:
 - excavate & install sewer structures



PA2 | CONSTRUCTION PHOTOS



Asser Levy Playground reconstruction (looking north)



Asser Levy Playground rendering

Project Area 1

PA 1 | UPCOMING CONSTRUCTION ACTIVITIES

ALL WORK IS SUBJECT TO CHANGE

- February:

1. Shallow clearing and grubbing activities & utility work continue in the closed area of park. Subgrade activities will begin.
2. Corlears Hook Park partial closure to facilitate construction activities
3. Bridge removal activities at Delancey Street continue (sidewalk closure)
4. ConEd work in Shared Use Path around E. Houston Street continues
5. E. 10th Street ConEd utility replacements

Weekly Bulletins & Advisories will be issued with construction activities.



PA 1 | OVERVIEW SUMMER 2022



PARK OPEN AREA PERCENTAGES:

- Summer 2022: 53%
- Summer 2023: 42%
- Summer 2024: 43%
- Summer 2025: 43%
- Summer 2026: 68%

Link to Construction Approach presentation:

https://www1.nyc.gov/assets/escr/downloads/pdf/ES_CR_PA1_ConstructionApproach_20211021.pdf

SUBJECT TO CHANGE AS CONSTRUCTION PROGRESSES.

PA 1 | CONSTRUCTION LOOK-AHEAD

ALL WORK IS SUBJECT TO CHANGE



Corlears Hook Bridge & Park

1. Clear work area
2. Construct Temporary Bridge
3. Remove Corlears Hook Bridge
4. Construct new bridge
5. Reconstruction activities

Delancey Street Area Work

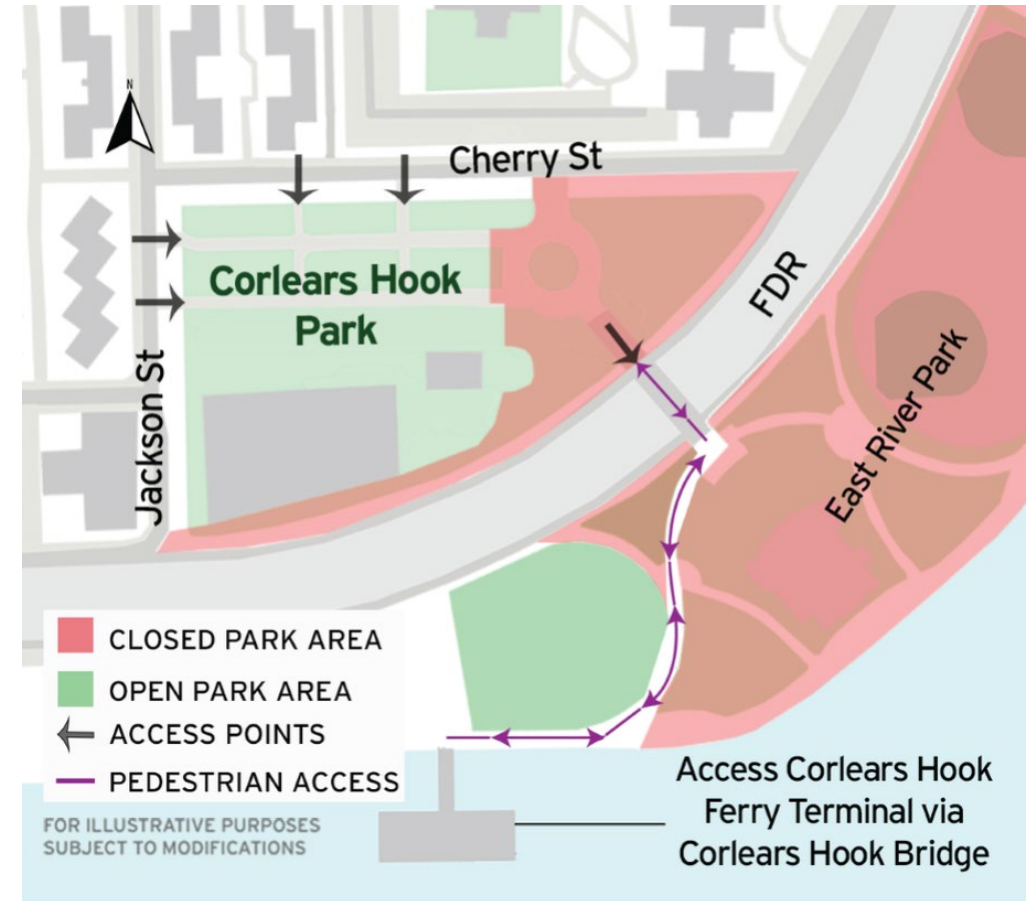
1. Remove Delancey Street Bridge
2. Utility Improvements
3. ERHC parking lot gate work
4. Construct new bridge
5. Restoration

ConEd Shared Use Path Work @ E. Houston Street and north (~3 phases – 4-6 mos. each)

1. Investigative utility work
2. Excavation
3. Sheet pile installation
4. Temporary restoration
5. Final restoration

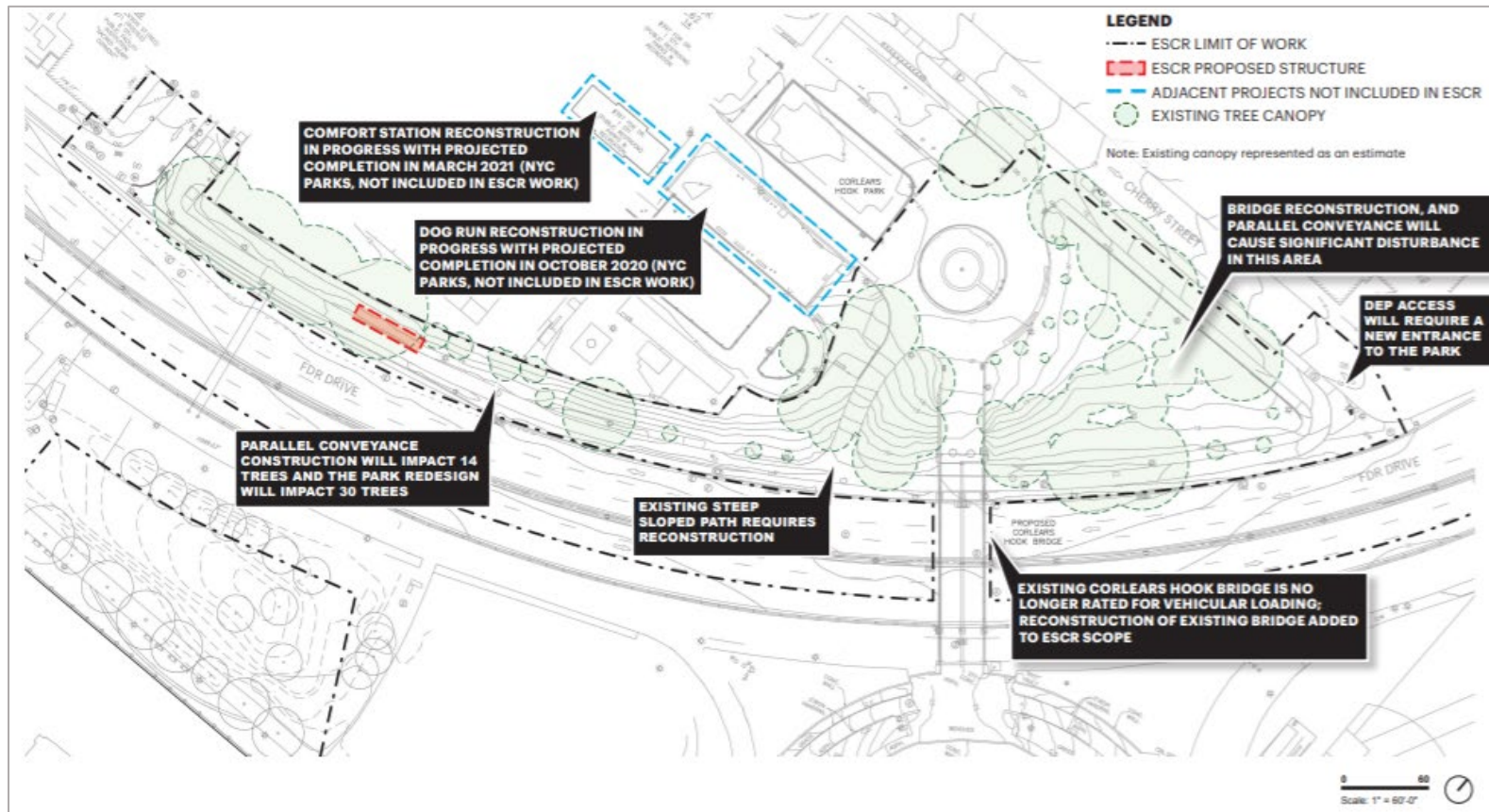
PA 1 | CORLEARS HOOK PARK

- Partial closure including site preparation to begin the week of February 28, 2022
 - Clearing to begin around March 1, 2022
 - DDC and Parks is meeting with Friends of Corlears Hook Park to review salvaging of materials
 - Access to ferry will be maintained
-
- Friends of Corlears Hook 1/14/2020 Presentation Link:
<https://www1.nyc.gov/assets/escr/downloads/pdf/2020-01-14-Friends-of-Corlears-Hook-Park-Design.pdf>
 - Public Design Commission Final Design Presentation 1/30/2020, pages 20 – 24. PDC Link:
<https://www1.nyc.gov/assets/escr/downloads/pdf/DDC-f-ESCR-pres-rev-final-given-to-PDC-2020-01-30.pdf>



PA 1 | CORLEARS HOOK PARK & PEDESTRIAN BRIDGE

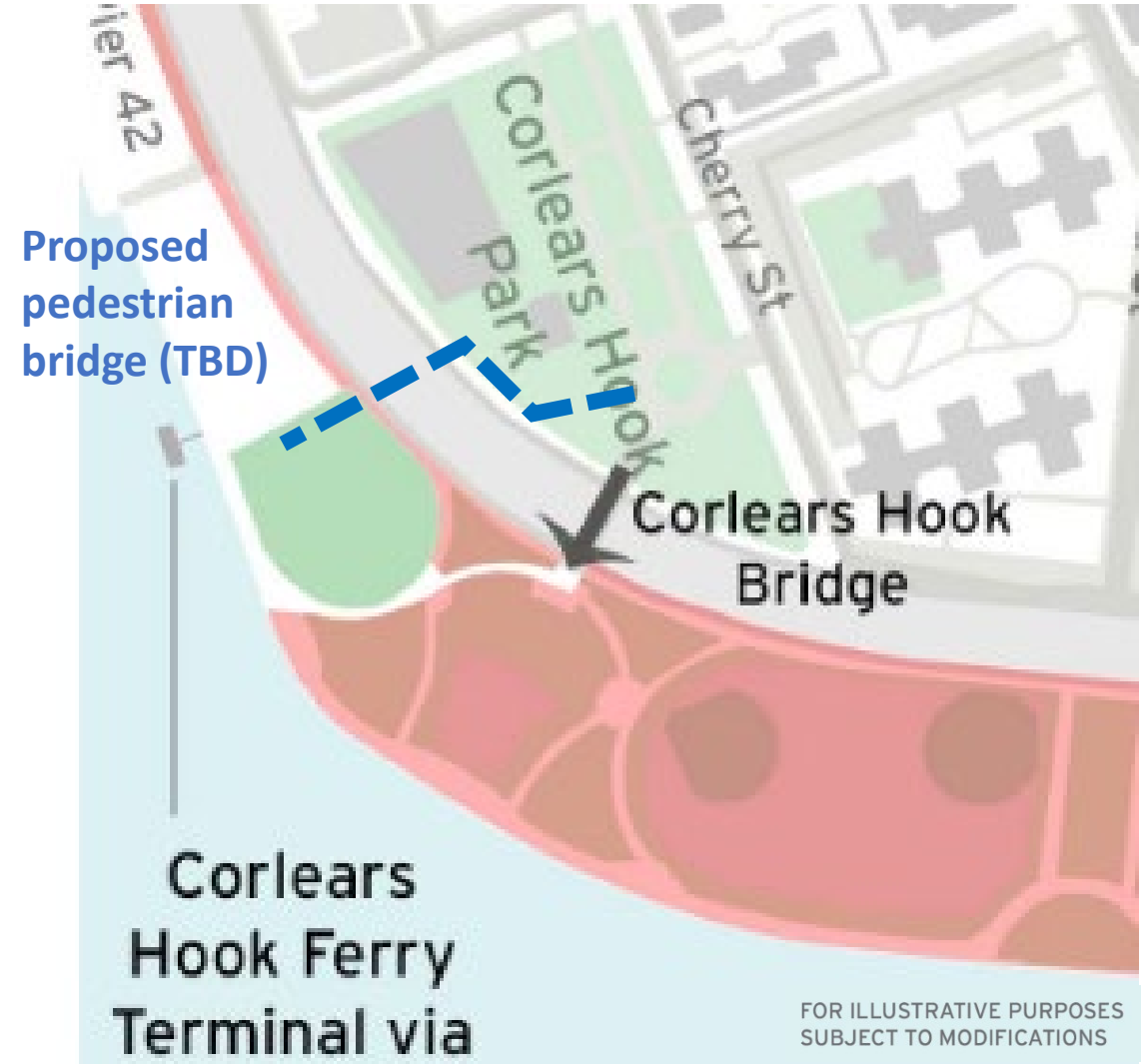
- The tree removals in Corlears Hook Park are required to facilitate the reconstruction of the new accessible Corlears Hook Bridge and a portion of Corlears Hook Park as well as utilities, etc.
- Over 75 new trees will be planted, as well as shrubs and groundcover in the new design.
- Corlears Hook Park will not be used as staging for the temporary bridge and the temporary bridge is not the cause of the tree removals.



Friends of Corlears Hook
1/14/2020 Presentation
Link:
<https://www1.nyc.gov/assets/escr/downloads/pdf/2020-01-14-Friends-of-Corlears-Hook-Park-Design.pdf>

PA 1 | CORLEARS TEMPORARY PEDESTRIAN BRIDGE

- Scheduled for installation Quarter 1 (Q1) 2022
- Final placement and details of temporary pedestrian bridge are being finalized through several agencies
- Placement was selected due to direct route to ferry, upcoming PC work, upcoming Corlears Hook Park and bridge work and existing utilities
- The proposed location for the temporary bridge is within the limits of the overall construction boundaries for the permanent Corlears Hook Park.
- Bridge will be prefabricated offsite and installed in sections on both sides of the FDR and then the FDR portion last



PA 1 | CORLEARS HOOK BRIDGES



Corlears Hook Park & Pedestrian Bridge birds-eye rendering

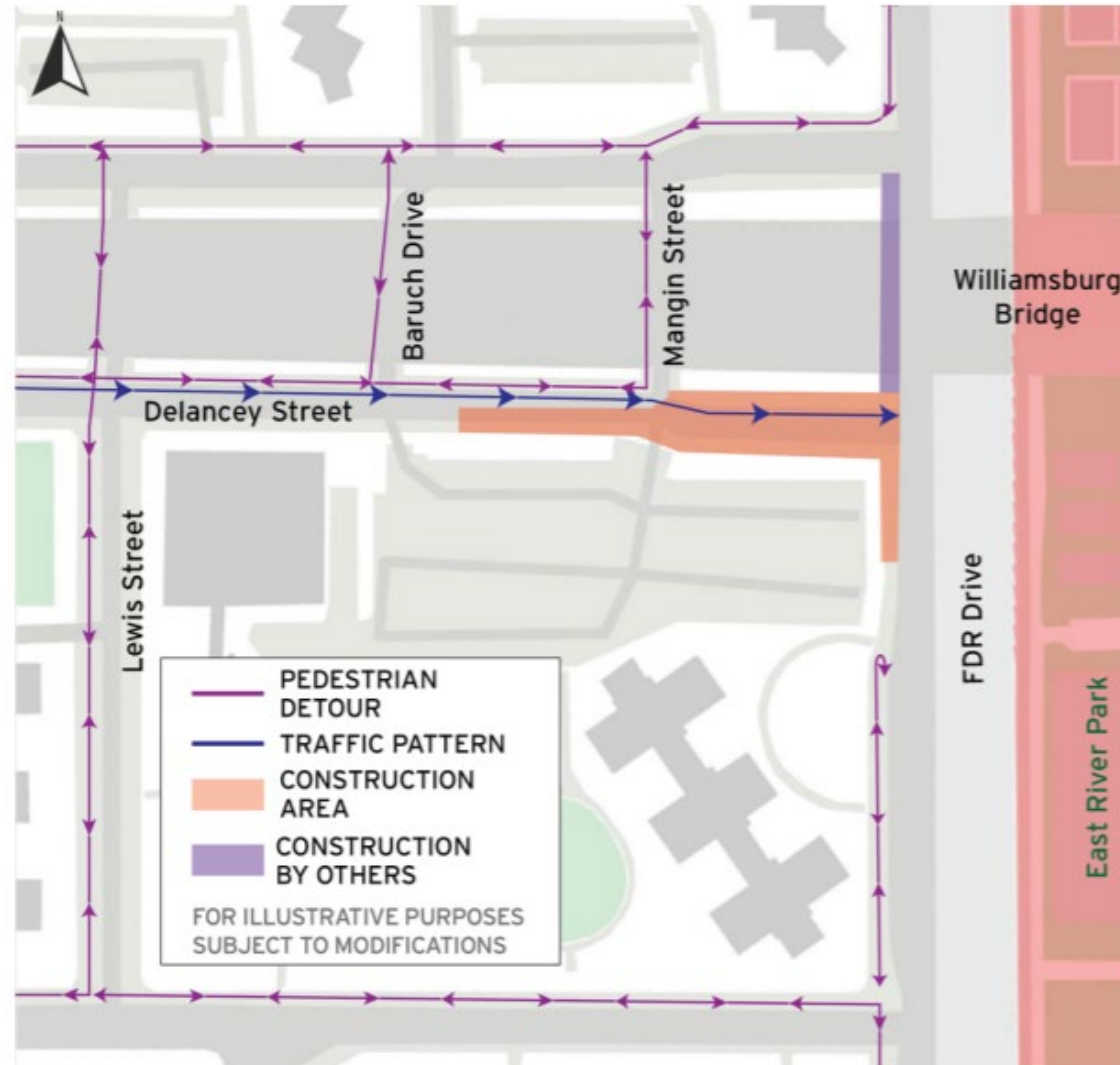


Corlears Hook Pedestrian Bridge rendering (looking west)

PA 1 | DELANCEY STREET PEDESTRIAN DETOUR

Sidewalk Closure at Delancey Street and FDR Drive Ongoing until further notice

- Construction activities will necessitate the closure of the sidewalk at Delancey Street between FDR Drive and Baruch Drive.
- This change will be in place 24 hours/day, 7 days/week. Traffic will be maintained and pedestrian detour is in effect. Please follow all signs and directions placed on-site to ensure safety.
- Additional Advisories with detour map have been posted



PA 1 | DELANCEY STREET PEDESTRIAN BRIDGE

Dismantling will occur in three parts:

1. Park-side night work 3pm-11:59pm - **COMPLETED**
2. Community side daytime work - **IN PROGRESS**
3. One over night to remove portion over the FDR - **UPCOMING**

Noise and air monitors are in place. Lead abatement process completed for ramps.



PA 1 | DELANCEY STREET PEDESTRIAN BRIDGE



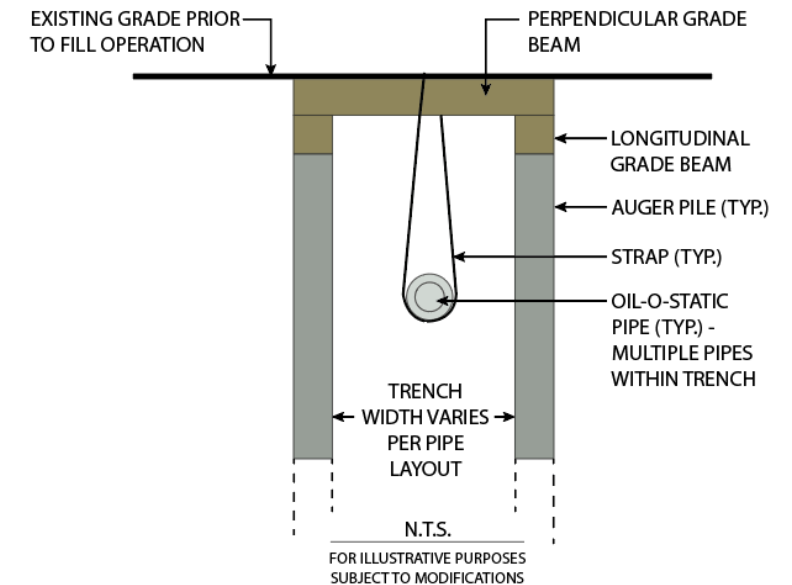
Delancey Street Pedestrian Bridge rendering (looking southeast)

PA 1 | SHARED USE PATH CONED WORK

- Construction ongoing in fenced area
- Work will continue in roughly (3) sections, each section is scheduled to take 4-6 months, total of 12-18 months
- Width of City 'trench' varies – ongoing field work to determine
- Upgrade, repair and provide settlement mitigation to existing oil-o-static lines which power lower Manhattan
- Prevent this work from happening after Park is built
- Oil-o-static wrapping & a system of augured (drilled) piles, grade beams, and slings to prevent settlement from park fill

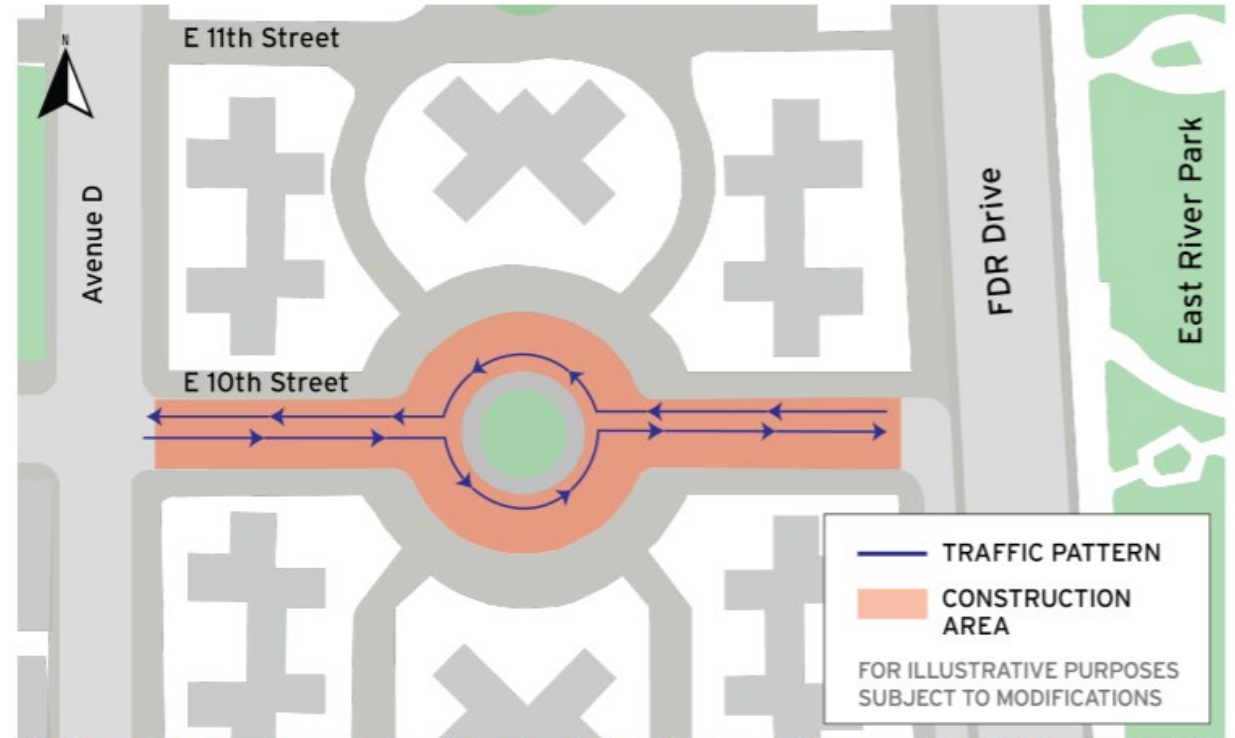


ILLUSTRATIVE DETAIL OF OIL-O-STATIC PIPE WORK



PA 1 | CONED E. 10TH STREET

- Con Edison Utility Work at E. 10th Street between FDR Drive and Avenue D
- Starting the week of February 14, 2022, ongoing until further notice
- Con Edison will begin phased upgrades of their utility lines under the ESCR project contract.
- **Parking restrictions** will be in effect during this operation and will be communicated through on-site signage.
- One lane of traffic will be maintained at all times.



Utility work by Con Edison may include extended work hours and/or on weekends to facilitate utility relocation, maintenance work or inspection services.

PA1 | AIR QUALITY MONITORS LOCATIONS



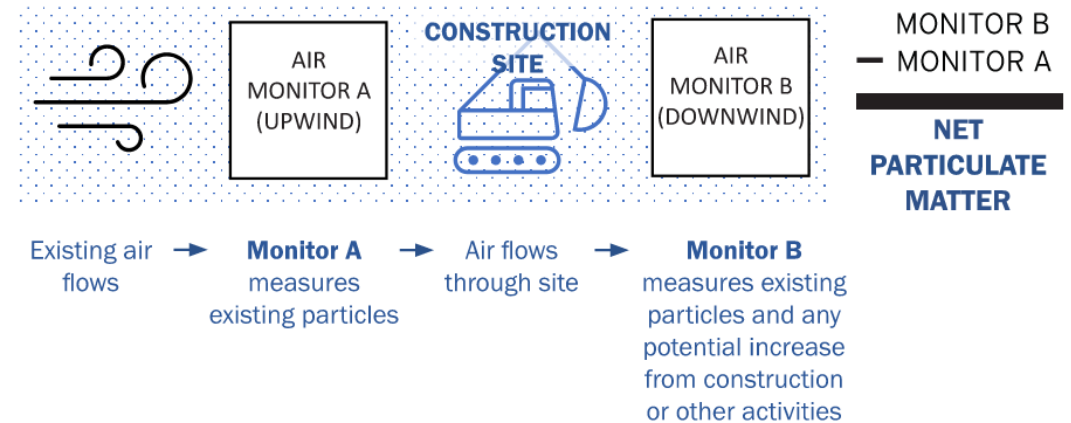
WHAT ARE WE MEASURING?

Particulate Matter (PM), or particle pollution, is a term for the solid particles and liquid droplets found in the air.

MEASURED SIZES:

PM 2.5: smaller particles typically from vehicle emission
PM 10: larger particles typically from dust

- **Monitoring machines** are on site to measure particles from construction vehicle emissions and dust as well site conditions such as wind speed and temperature.
- These machines are **placed strategically** along the edge of active construction activities.
- Some machines monitor existing conditions and others measure the potential increase of impact from construction.



ESCR MITIGATION TECHNIQUES

We are taking steps to control dust and limit emissions during construction.

To protect air quality, we are taking extensive preventive measures during daily construction activities, and we will increase these measures if monitoring machines indicate additional action is needed.

Measures to reduce construction vehicle pollution and emissions:

- Use Ultra-Low Sulfur Diesel fuel
- Minimize use of diesel engines, use the best available technology for non-road diesel engines, and restrict truck idling time
- Use barging for large deliveries. One barge has the capacity to divert up to 57 trucks from local roads.

Measures to reduce and control dust:

- Cover and secure loads for all trucks hauling loose material including sand and dirt
- Use water spray for roads, trucks, truck wheels, excavation areas, and stockpiles
- Cover stockpiles with anchored tarps
- Use extra care, including more frequent application of these measures, during dry periods and high wind periods



FILL MATERIAL

- EIS: Chapters 5.7, “Chapters 5.7, Hazardous Materials,” and 6.6 “Construction – Hazardous Materials.”

<https://www1.nyc.gov/site/escr/about/environmental-review.page>

CAG LETTER 2 SOILS

Fill material:

Unless otherwise approved by HNTB-LiRo, the Contractor shall import only fill material that meets one of the following environmental criteria.

1. Virgin quarried material
 2. NYSDOT-spec Recycled concrete aggregate (RCA), from facilities permitted or registered by NYSDEC.
 3. Material from a facility that possesses a current Beneficial Use Determination (BUD) from the NYSDEC that includes testing as required by the spec.
 4. Material from any other site where testing results performed by the Engineer demonstrate that the material meets the lower of the Restricted Residential and Groundwater Protection SCOs set forth in NYSDEC 6 NYCRR Part 375 in accordance with procedures as per the spec.
 5. Material from the New York City Office of Environmental Remediation Clean Soil Bank.
- Glass from recycling facilities that meets the requirements for Glass as approved by the Engineer.
 - Fill and Backfill, as specified above may be used up to 3 ft from finished grade or the bottom of the horticultural fill layer, where specified on the Contract Drawings. The upper 3 ft of fill material (below the finished grade or horticultural fill layer) shall meet the requirements of the Select Granular Fill.
 - Select Granular Fill shall be a natural, well graded sand and crushed stone or approved clean earth of low silt and clay content, free from bricks, blocks, excavated pavement materials and debris, stumps, roots and other organic matter, as well as ashes, oil and other perishable or foreign material.

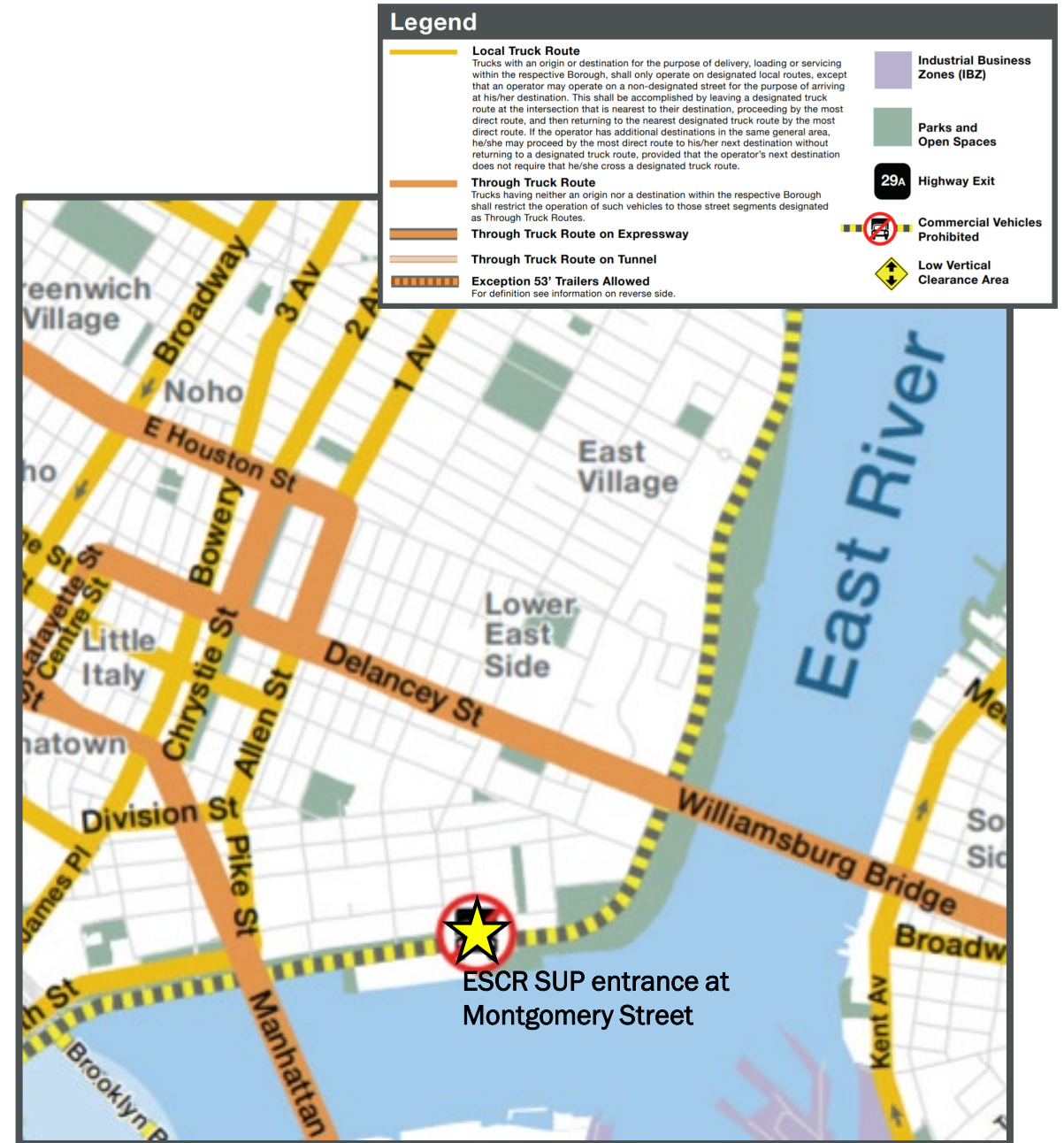
COMMUNITY ADVISORY GROUP— East Side Coastal Resiliency Project

30

CAG Virtual Meeting #11: <https://www1.nyc.gov/assets/escr/downloads/pdf/20210701-ESCR-CAG-Meeting-11-FINAL.pdf>

WHAT WE'VE HEARD

- **Truck Routes:** Construction vehicles, and trucks in general, are encouraged to access routes throughout the City based on the NYC Truck Route Map <https://www1.nyc.gov/html/dot/downloads/pdf/2015-06-08-truck-map-combined.pdf> .
- There is existing on street signage for truck drivers that indicates where these routes exist.
- **Construction access for ESCR is at Montgomery Street** (yellow star on map), (4) blocks from the Pike Street truck route.
- **Connections to Pier 42:** EDC will provide when available



NYC Truck Route Map



The East Side Coastal Resiliency (ESCR) Project is a coastal protection initiative, jointly funded by the City of New York and the federal government, aimed at reducing flood risk due to coastal storms and sea level rise on Manhattan's East Side from East 25th Street to Montgomery Street. The boundaries of this project correspond with the natural "pinch-points" in the 100-year floodplain: areas where the land is higher along the coastline, making it easier to close the system off from water entering from the north and south. The project design integrates flood protection into the community fabric, improving waterfront open spaces and access, rather than walling off the neighborhood. Construction on the East Side Coastal Resiliency project will begin in Fall 2020 and continue through 2025.

Project Design

From flood protection measures to bike lanes and ball fields, the ESCR project is improving open spaces and access in the Lower East Side while strengthening the city's coastline.

