

East Side Coastal Resiliency Construction Update

CB6 Land Use Committee Meeting
Virtual Meeting
January 24, 2022

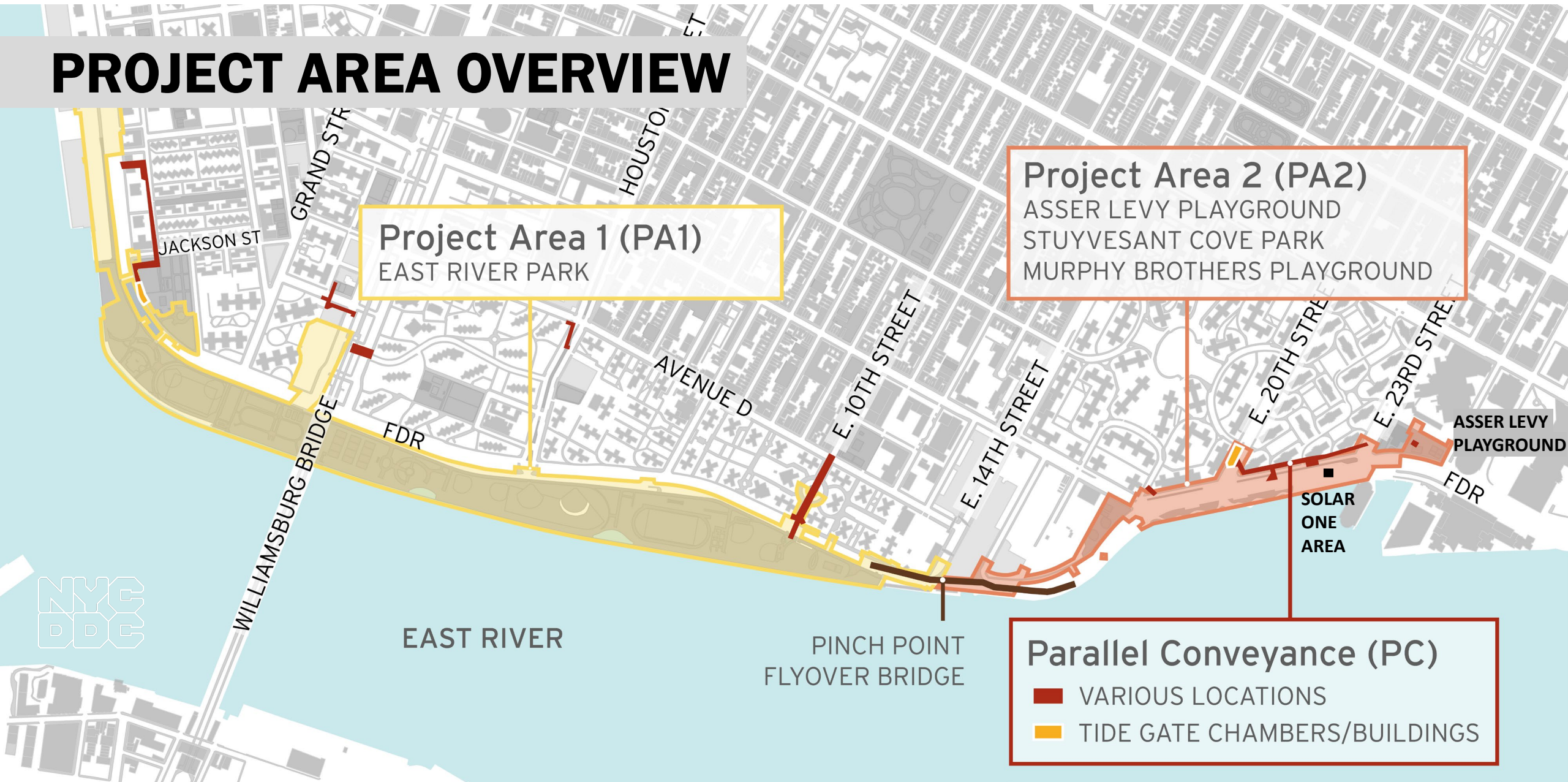


Mayor's Office of
Resiliency

HIGHLIGHTS

- Overview of Project & Contracts
- Project Area 2 Construction Progress & Photos
- Project Area 1 Upcoming Construction Activities
- MWBE Opportunities
- What We've Heard

PROJECT AREA OVERVIEW



OVERVIEW OF CONTRACTS

Project Area 1 (PA1)

- Notice to Proceed (NTP) issued to contractor August 16, 2021
- partial park closure south of Stanton Street & Greenway closure
- ConEd utility work in shared use path at Houston Street entrance
- upcoming bridge replacement activities at Delancey Street
- passive lawn space open to public

Project Area 2 (PA2)

- in construction on phase 2
 - Asser Levy Playground, Stuyvesant Cove Park at E 20th Street north to Solar One Area
 - over 650 ft of floodwall installed

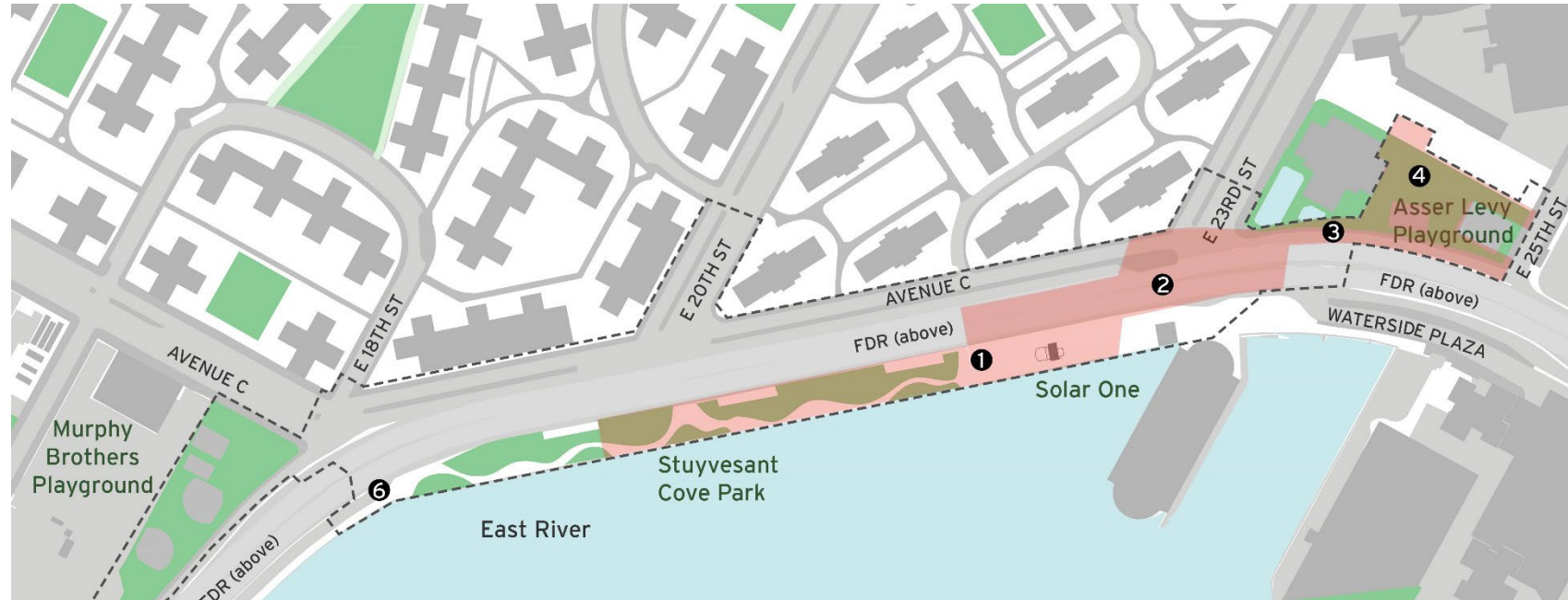
Parallel Conveyance (PC)

- bid advertised on 11/12/21
- bid opening scheduled for 1/26/21

PA2 | CONSTRUCTION PROGRESS

ALL WORK IS SUBJECT TO CHANGE

1. Stuyvesant Cove Park north of 20th St.:
 - pile installation & floodwall construction
2. E 23rd St. Intersection:
 - utility work & pile installation
3. West Service Road:
 - pile installation
4. Asser Levy Playground:
 - floodwall foundation & park reconstruction
 - handball court restoration
5. E 15th Street between Ave C and FDR Dr. within Con Edison Facility
 - Sewer reconstruction/coordination for sub-surface investigation
6. FDR Dr. NB exit 7 ramp:
 - lane shift and sewer work



PA2 | CONSTRUCTION PHOTOS



Asser Levy Playground reconstruction (looking south)



Asser Levy Playground rendering

PA2 | SITE PHOTOS STUYVESANT COVE PARK



PA2 | ACTIVE ADVISORIES

Community Advisory

EAST SIDE
COASTAL
RESILIENCY

Project # SANDRESM2 | Borough: Manhattan | Issue Date: 11/05/2021
 The East Side Coastal Resiliency (ESCR) Project is an initiative to provide long-term flood protection on the east side of Manhattan.

Stuyvesant Cove Park Closure at E. 20th Street Starting Monday, November 22, 2021

To facilitate the construction of the floodwall and flood gate, Stuyvesant Cove Park, at E. 20th Street, will be closed until Spring 2022. Access to E. 20th Street will be maintained via the Greenway.

Questions ¿Preguntas? 问题?
 Contact your Community Construction Liaison (CCL):
 Nadine Harris
 Phone: 347-572-3057
 Email: ESCRCL2@ddccr.com
 Inquiry Tool | Consulta en Línea | 线上咨询: www.nyc.gov/escr/contact

PLEASE NOTE: Due to unforeseen conditions (weather, field conditions, etc.) it may become necessary to change some scheduled work locations and operations.

NYC

DDC

NYC

Community Advisory

EAST SIDE
COASTAL
RESILIENCY

Project # SANDRESM2 | Borough: Manhattan | Issue Date: 1/25/2022
 The East Side Coastal Resiliency (ESCR) Project is an initiative to provide long-term flood protection on the east side of Manhattan.

Asser Levy Playground Handball Court Temporary Closure Starting the week of February 7, 2022 For approximately 3 weeks

To facilitate Asser Levy Playground reconstruction, the Handball Court will be temporarily closed for construction activities to paint the rails and replace the fences.

Questions ¿Preguntas? 问题?
 Contact your Community Construction Liaison (CCL):
 Nadine Harris
 Phone: 347-572-3057
 Email: ESCRCL2@ddccr.com
 Inquiry Tool: www.nyc.gov/escr/contact

PLEASE NOTE: Due to unforeseen conditions (weather, field conditions, etc.) it may become necessary to change some scheduled work locations and operations.

NYC

DDC

NYC

PA 1 | UPCOMING CONSTRUCTION ACTIVITIES

January/February:

1. Shallow clearing and grubbing activities will continue in the closed area of park.
2. Shared Use Path closure south of Stanton Street and at E. Houston Street for ConEd utility work.
3. Bridge replacement activities at Delancey Street will begin.
 - 3 parts: park-side, community-side, over the FDR
4. Temporary Bridge & Corlears Hook Bridge.
5. Utility work will begin in and adjacent to East River Park.

Weekly Bulletins & Advisories will be issued with construction activities.



HIRING VIRTUAL RESOURCES EVENT

ESCR Winter Virtual Information Session & Resource Fair

Wednesday, February 16, 2022, 4:00pm-7:00pm

Learn about hiring and subcontracting opportunities related to the East Side Coastal Resiliency (ESCR) Project:

- NYC Department of Design and Construction Office of Diversity and Industry Relations (NYCDDC ODIR)
- General Contractors (GCs)
- The Program and Construction Management Team (PMCM)
- NYC Department of Small Business Services (SBS), Workforce1
- Lower East Side Employment Network (LESEN)

Smaller Breakout Sessions will include:

- Strategies for Successful Employment + Upcoming Opportunities
- Apprenticeship Opportunities in Construction
- Training Opportunities



Work With Us

EAST SIDE COASTAL RESILIENCY

ESCR Winter Virtual Information Session & Resource Fair

**Wednesday, February 16, 2022
4:00pm-7:00pm**

The East Side Coastal Resiliency (ESCR) project is a coastal protection initiative, jointly funded by the City of New York and the federal government, aimed at reducing flood risk due to coastal storms and sea level rise on Manhattan's East Side from East 25th Street to Montgomery Street.

Learn about the project, training, hiring and subcontracting opportunities related to the ESCR Project from the project team and local career support leaders.

During the first portion of the event, learn about programs and resources from:


- NYC Department of Design and Construction, Office of Diversity & Industry Relations (NYCDDC ODIR)
- Program and Construction Management Team (PMCM)
- General Contractors (GM)
- NYC Department of Small Business Services (SBS)
- Lower East Side Employment Network (LESEN)

Then engage with local career support leaders and industry representatives in the second portion of the event. Pre-register for the **breakout sessions** which interest you most:


- Strategies for Successful Employment + Upcoming Opportunities
- Apprenticeship Opportunities in Construction
- Training Opportunities

Pre-register for this event and be the first to sign up for our breakout session conversations. <https://bit.ly/ESCRInfoSession>

To learn more about working with the East Side Coastal Resiliency (ESCR) team, and the event please visit: <https://www1.nyc.gov/site/escr/contact/work-with-us.page>



East Side Coastal Resiliency
www.nyc.gov/escr



NYC Department of Design and Construction
Office of Community Outreach & Notification

NYC Mayor's Office of Resilience

NYC Parks

NEW YORK CITY DOT

NYC Environmental Protection

OPEN STREETS - DOT

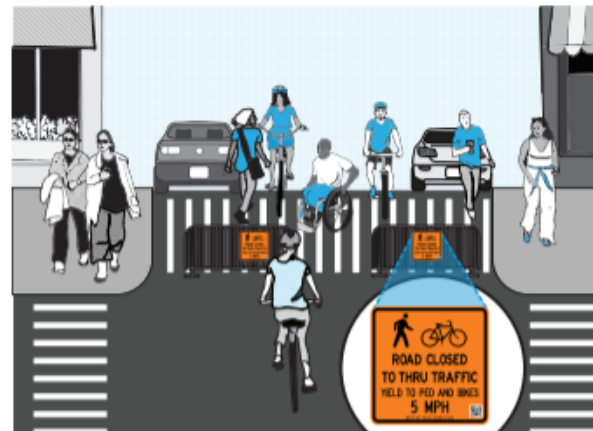
- DOT Open Streets:
<https://www1.nyc.gov/html/dot/html/pedestrians/openstreets.shtml#apply>
- Open Streets Application:
<https://nycopenstreetsprogram.s3.amazonaws.com/index.html>
- Deadline: January 28, 2022, for Spring launch



Overview

New York City's Open Streets program transforms streets into public space open to all. These transformations allow for a range of activities that promote economic development, support schools, and provide new ways for New Yorkers to enjoy cultural programming and build community. NYC DOT works with community-based organizations, educational institutions, and groups of businesses to execute Open Streets citywide. There are three types of Open Streets:

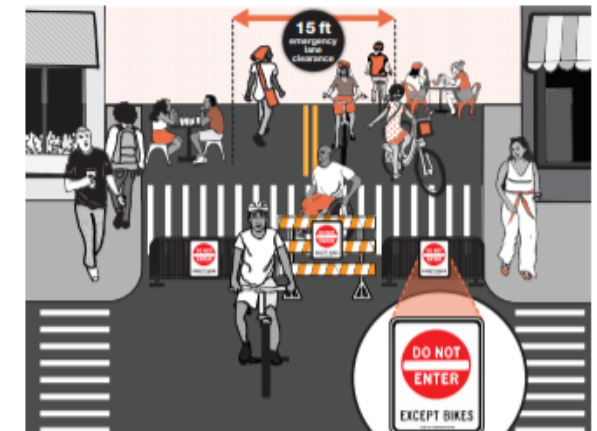
Limited Local Access



Street designated for pedestrian and cyclist use and enjoyment. Local vehicle access is allowed for limited use. Drivers are advised to be extremely cautious and to drive 5 MPH or slower on the Open Streets. **No through traffic permitted while Open Streets are in effect. Only vehicles that must do the following on the street:**

- Parking (all regulations apply)
- Picking up/dropping off
- Local deliveries
- Emergency vehicles
- Access-A-Ride
- Utility vehicles
- City service vehicles

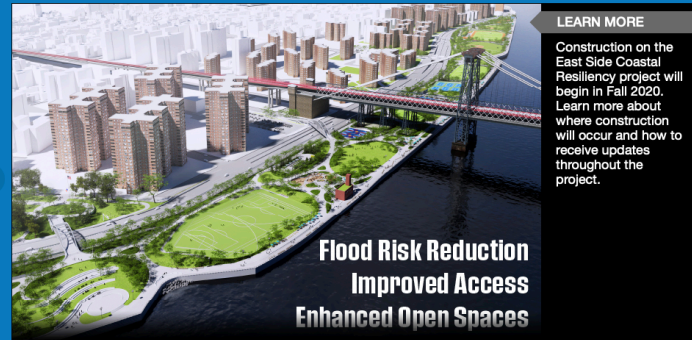
Full Closure and Full Closure: Schools



Full Closures allow for a range of car-free activities that support local businesses and schools, and create a safe place for New Yorkers to gather. These Open Streets support multiple uses, including outdoor dining, learning, and community programming. **No vehicle access and no parking allowed when Full Block Closures are in effect. A 15 foot emergency lane must be clear at all time, for emergency vehicle access.**

Please visit nyc.gov/openstreets for more information.





LEARN MORE Construction on the East Side Coastal Resiliency project will begin in Fall 2020. Learn more about where construction will occur and how to receive updates throughout the project.

Flood Risk Reduction Improved Access Enhanced Open Spaces

East Side Coastal Resiliency

The East Side Coastal Resiliency (ESCR) Project is a coastal protection initiative, jointly funded by the City of New York and the federal government, aimed at reducing flood risk due to coastal storms and sea level rise on Manhattan's East Side from East 25th Street to Montgomery Street. The boundaries of this project correspond with the natural "pinch-points" in the 100-year floodplain: areas where the land is higher along the coastline, making it easier to close the system off from water entering from the north and south. The project design integrates flood protection into the community fabric, improving waterfront open spaces and access, rather than walling off the neighborhood. Construction on the East Side Coastal Resiliency project will begin in Fall 2020 and continue through 2025.

 Construction Progress	 Resiliency & Flood Protection	 Project Background & Goals	 Project Design
Construction Notices View our most recent community presentations for updates as we prepare for upcoming construction activities.	Resiliency and Flood Protection Learn more about ESCR's resiliency and the forward-thinking flood protection measures being implemented to protect 110,000 New Yorkers from the impacts of climate change.	Project Background and Goals Read about the history and background of ESCR, and the goals driving this technically complex infrastructure project.	Project Design From flood protection measures to bike lanes and ball fields, the ESCR project is improving open spaces and access in the Lower East Side while strengthening the city's coastline.

NEED MORE INFORMATION?

VISIT US AT: www.nyc.gov/escr

