

East Side Coastal Resiliency Construction Update

CB3 Parks Committee Meeting

Virtual Meeting

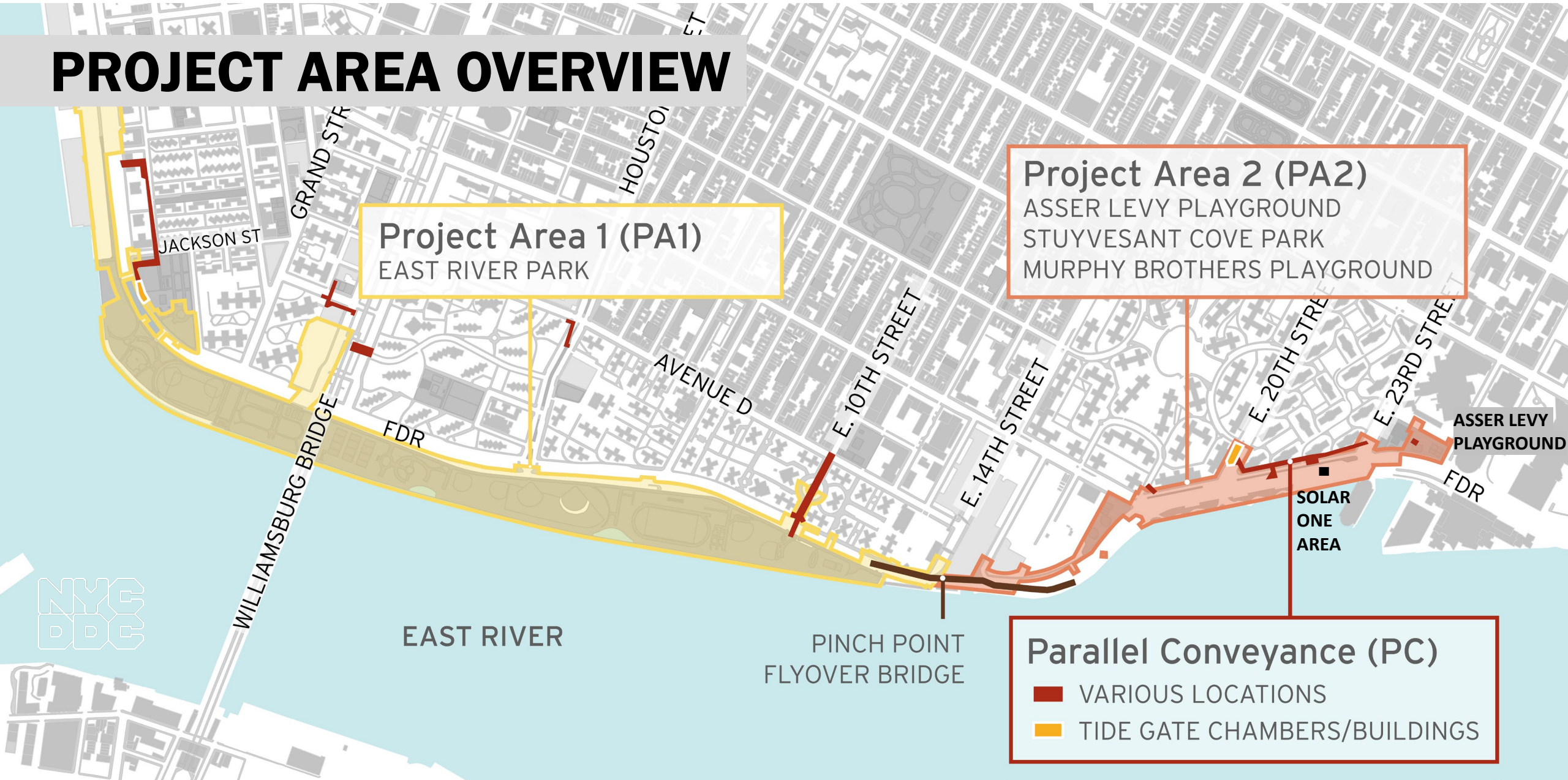
January 13, 2022



HIGHLIGHTS

- Overview of Contracts
- Project Area 2
- Project Area 1
- Environmental Monitoring
- What We've Heard
- Work with Us Update

PROJECT AREA OVERVIEW



OVERVIEW OF CONTRACTS

Project Area 1 (PA1)

- Notice to Proceed (NTP) issued to contractor August 16, 2021
- partial park closure south of Stanton Street & Greenway closure
- bridge replacement activities at Delancey Street
- passive lawn open space to open next week (weather-dependent)

Project Area 2 (PA2)

- in construction on phase 2
 - Asser Levy Playground, Stuyvesant Cove Park at E 20th Street north to Solar One Area
 - over 650 ft of floodwall installed

Parallel Conveyance (PC)

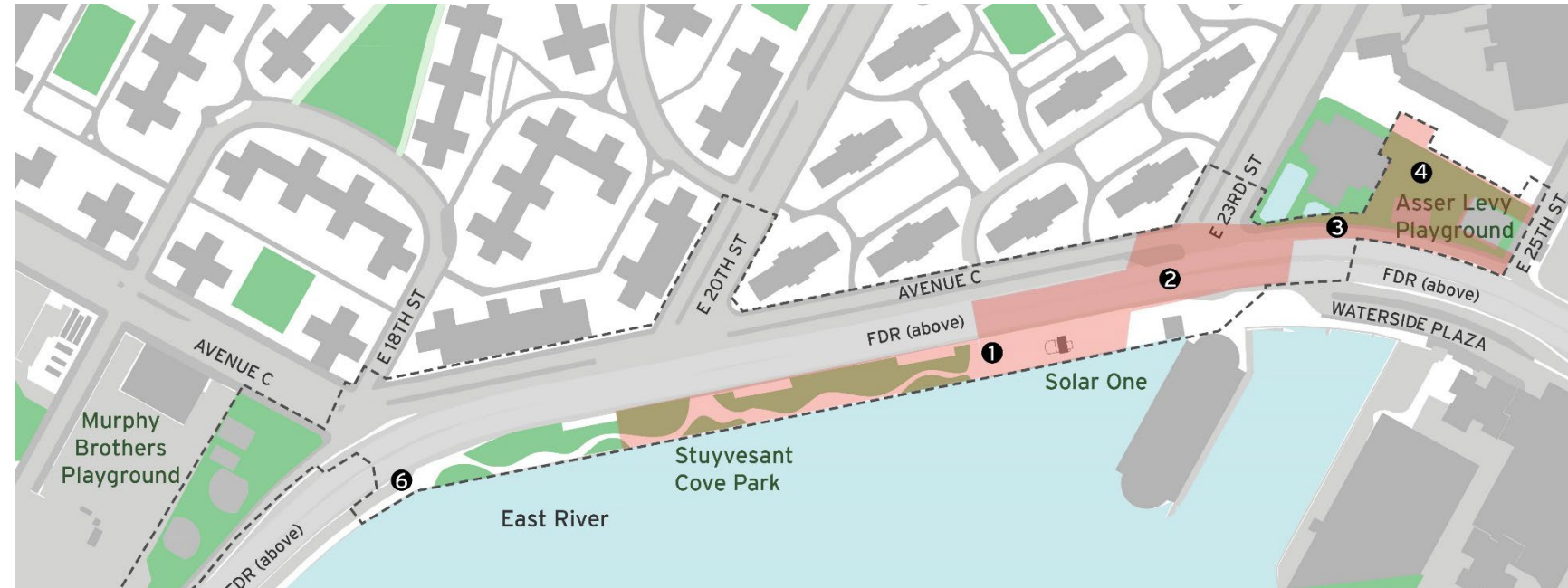
- bid advertised on 11/12/21
- bid opening scheduled for 1/26/21

Project Area 2

PA2 | CONSTRUCTION PROGRESS

ALL WORK IS SUBJECT TO CHANGE

1. Stuyvesant Cove Park north of 20th St.:
 - pile installation & floodwall construction
2. E 23rd St. Intersection:
 - utility work & pile installation
3. West Service Road:
 - pile installation
4. Asser Levy Playground:
 - floodwall foundation & park reconstruction
5. E 15th Street between Ave C and FDR Dr. within Con Edison Facility
 - Sewer reconstruction/coordination for sub-surface investigation
6. FDR Dr. NB exit 7 ramp:
 - lane shift and sewer work



PA2 | CONSTRUCTION PHOTOS



Asser Levy Playground reconstruction (looking south)



Asser Levy Playground rendering

Project Area 1

PA 1 | UPCOMING CONSTRUCTION ACTIVITIES

- Link to Project Area 1 Construction Approach (October 2021): https://www1.nyc.gov/assets/escr/downloads/pdf/ESCR_PA1_ConstructionApproach_20211021.pdf

BUILDING DURABLE PROTECTION FOR NYC

Key Objectives

- Bring full flood protection on-line as quickly as possible
- Maintain public access to a minimum of 42% of the park throughout construction
- Mitigate park closures by providing interim recreation options throughout the neighborhood

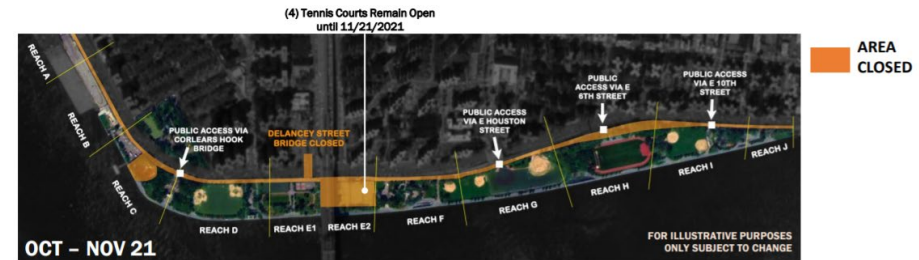
Construction Priorities

- Maintain public and worker safety during construction
- Ensure constructability and logical sequencing of work
 - Deepest excavation first (Tennis Courts) to improve upland drainage
 - Complex carbon fiber wrapping work on Con Edison transmission line
 - Contiguous stretches to allow for soil settlement



3

MID-OCTOBER to NOVEMBER 21, 2021



SUMMARY

- Fields will remain open through the end of league season in November
- Four (4) tennis courts to remain open until November 21, 2021
- Compost Area under construction starting October 2021, for restored lawn area
- Deep sewer excavation begins in Tennis Court area in November 2021
- Shared Use Path fully closed to the public by November 21, 2021. It will be available for Parks Department and Emergency vehicle access.



6

Slides from October 2021 Construction Approach presentation



PA 1 | UPCOMING CONSTRUCTION ACTIVITIES

- January/February:
 1. Passive lawn open space to open next week (weather dependent).
 2. Shallow clearing and grubbing activities will continue in the closed area of park.
 3. Shared Use Path closure will continue north to E 10th Street in **phases** with access provided to open amenities.
 - ConEd work to begin in Shared Use Path between Stanton St. and E Houston St. ramps.
 - Access will be provided from the SUP to the esplanade adjacent to Ballfield #3
 4. Bridge replacement activities at Delancey Street will begin.
 - 3 parts: park-side, community-side, over the FDR
 5. Temporary Bridge & Corlears Hook Bridge.
 6. Utility work will begin in and adjacent to East River Park.

Weekly Bulletins & Advisories will be issued with construction activities.



PA 1 | UPCOMING CONSTRUCTION ACTIVITIES

THIS SLIDE WAS NOT PRESENTED AT THE 1/13/22 CB3 MEETING, HOWEVER INCLUDED HERE TO FURTHER CLARIFY THE PREVIOUS SLIDES PEDESTRIAN DETOUR. THIS GRAPHIC WAS PREPARED AND DISTRIBUTED AS PART OF THE 1/14/22 CONSTRUCTION BULLETIN.

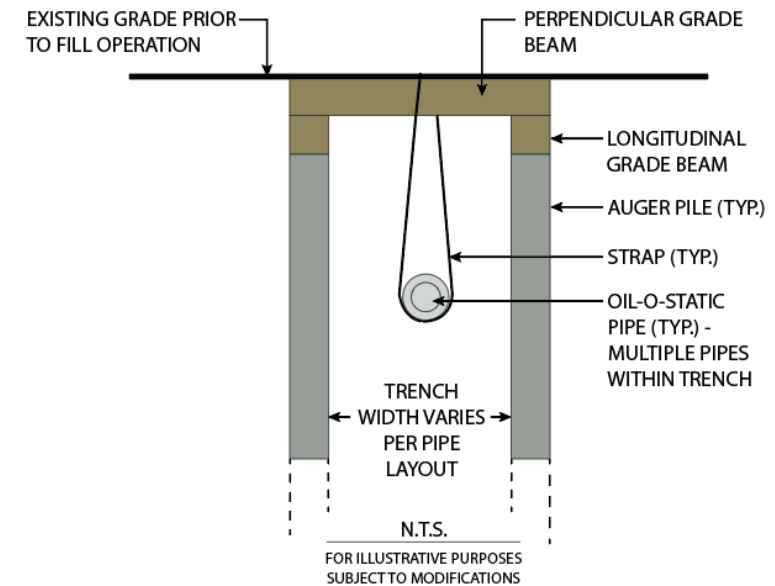


PA 1 | SHARED USE PATH CONED WORK

- Upgrade, repair and provide settlement mitigation to existing oil-o-static lines which power lower Manhattan
- Prevent this work from happening after Park is built
- Width of City 'trench' varies – field work to determine
- Oil-o-static wrapping & a system of augered (drilled) piles, grade beams, and slings to prevent settlement from park fill



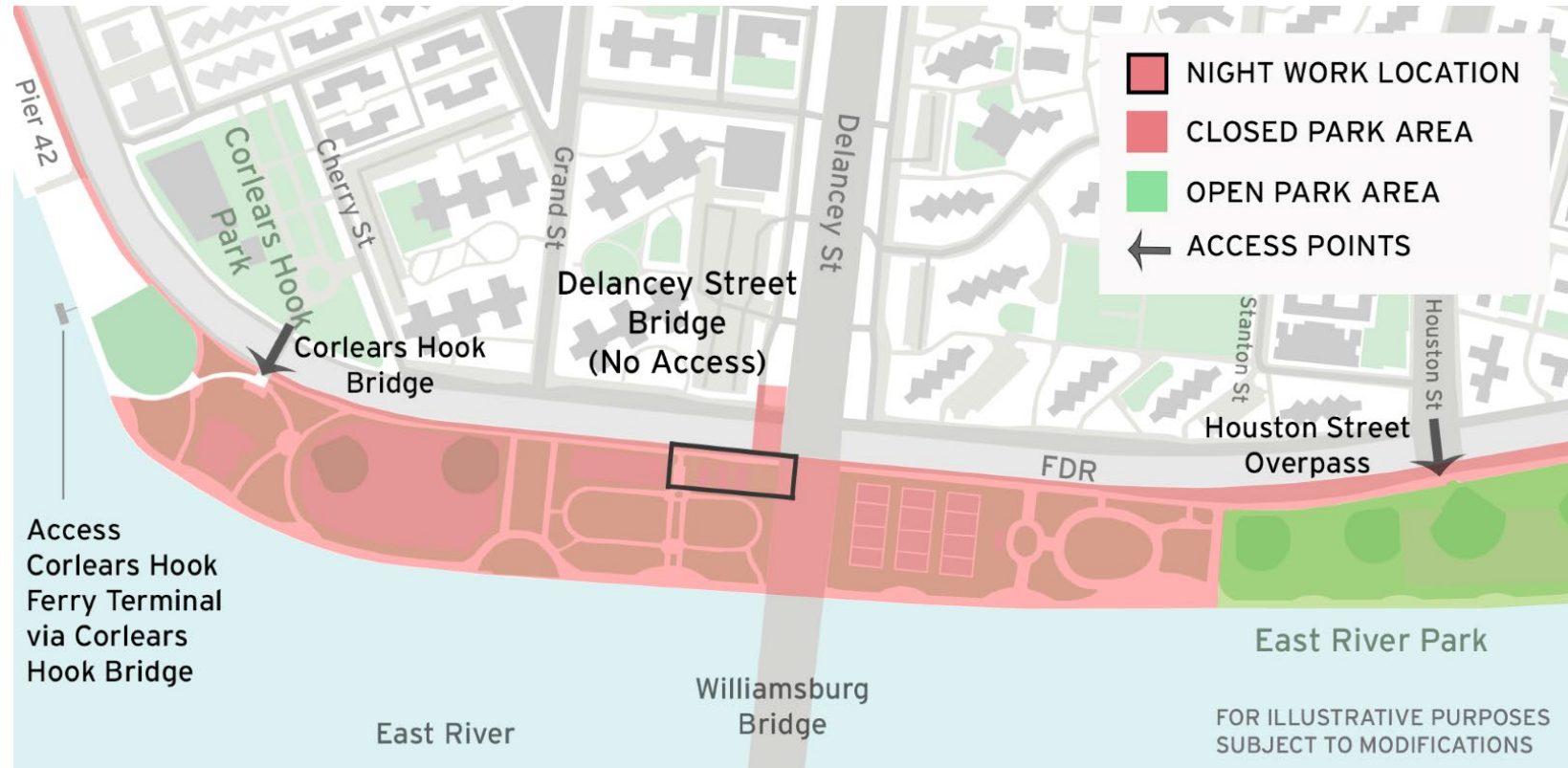
ILLUSTRATIVE DETAIL OF OIL-O-STATIC PIPE WORK



PA 1 | DELANCEY ST PEDESTRIAN BRIDGE

Nightwork will begin in East River Park at Delancey Street the week of January 24, 2022

- Ongoing between the hours of **3:00pm to 11:59pm** for approximately **4 weeks**
- Construction operations necessitate extended work hours to dismantle the park-side ramp of the Delancey Street Pedestrian Bridge.
- Noise and air monitors will be in place prior to the start of these activities.



PA 1 | DELANCEY ST PEDESTRIAN BRIDGE

Dismantling will occur in three parts:

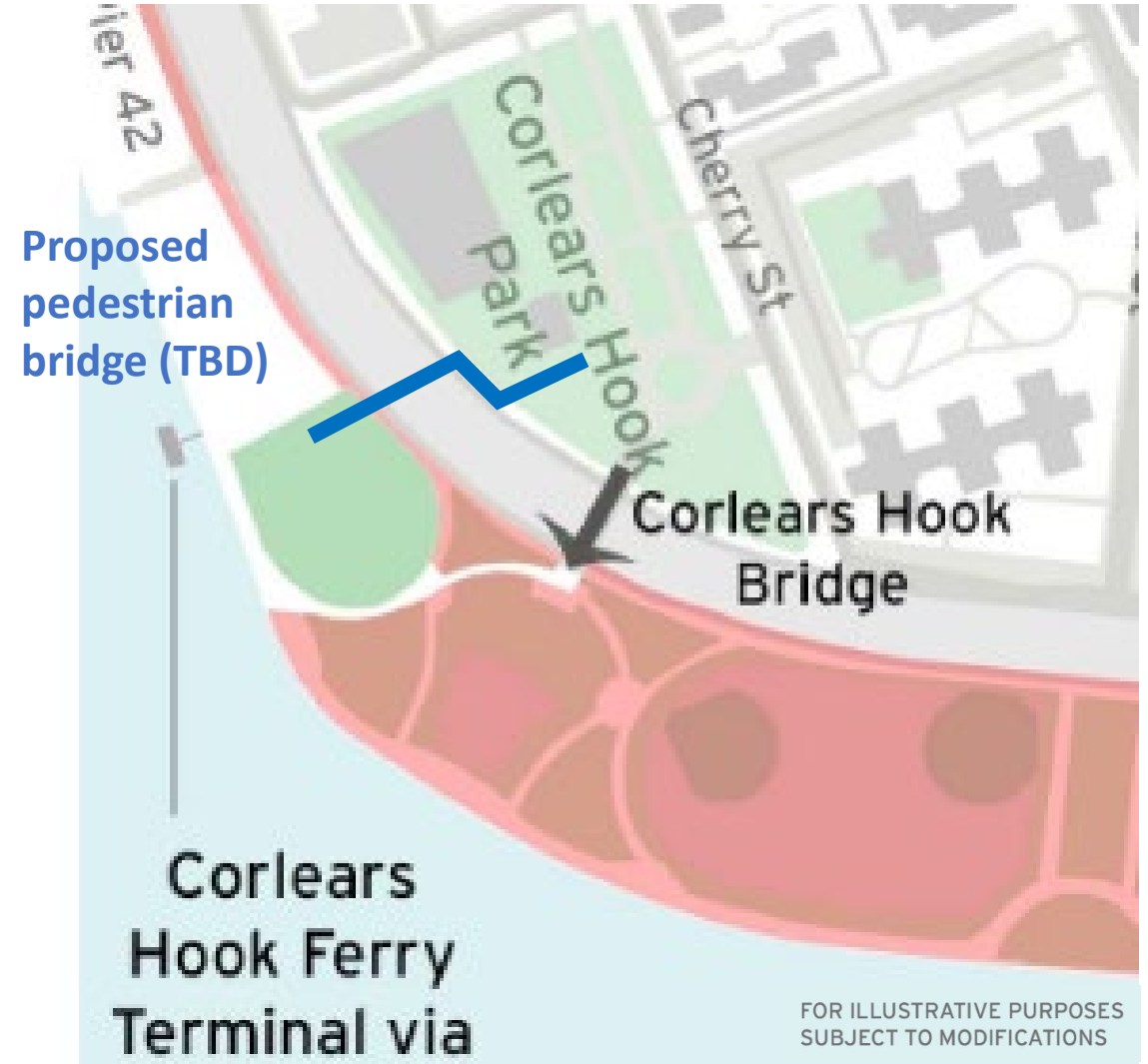
1. Park-side night work 3pm-11:59pm
2. Community side daytime work
3. One over night to remove portion over the FDR

Noise and air monitors will be in place prior to the start of these activities.



PA 1 | TEMPORARY PEDESTRIAN BRIDGE

- Final placement and details of temporary pedestrian bridge are being finalized through several agencies
- Scheduled for installation Quarter 1 (Q1) 2022
- Placement was selected due to direct route to ferry, upcoming PC work, upcoming Corlears Hook Park and bridge work and existing utilities



PA 1 | DELANCEY ST & CORLEARS HOOK BRIDGES



Delancey Street Pedestrian Bridge rendering (looking southeast)



Corlears Hook Pedestrian Bridge rendering (looking west)

ACCESS AND DETOURS



- Shared Use Path will be closed north to E 10th Street during this phase and closed fully later this year
- Bicycle detour shown here
- Additional bicycle and pedestrian signage are currently being coordinated with DOT and Parks
- Safe access will be provided at all open park entrances and to open park amenities
- Access provided to Emergency Vehicles and Parks vehicles
- DOT is looking into comments on the conditions of bike detour routes and will follow up.

OPEN STREETS - DOT

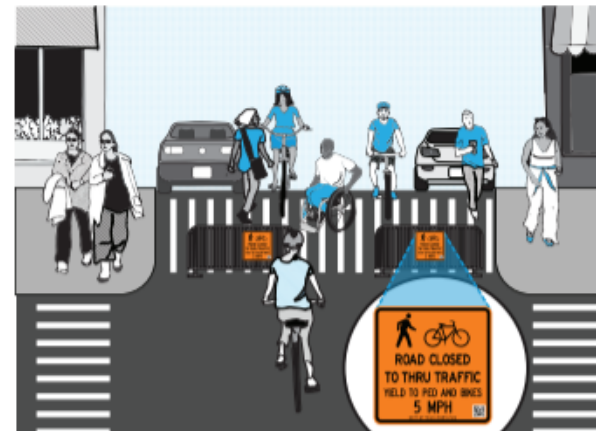
- DOT Open Streets:
<https://www1.nyc.gov/html/dot/html/pedestrians/openstreets.shtml#apply>
- Open Streets Application:
<https://nycopenstreetsprogram.s3.amazonaws.com/index.html>
- Deadline: January 28, 2022, for Spring launch



Overview

New York City's Open Streets program transforms streets into public space open to all. These transformations allow for a range of activities that promote economic development, support schools, and provide new ways for New Yorkers to enjoy cultural programming and build community. NYC DOT works with community-based organizations, educational institutions, and groups of businesses to execute Open Streets citywide. There are three types of Open Streets:

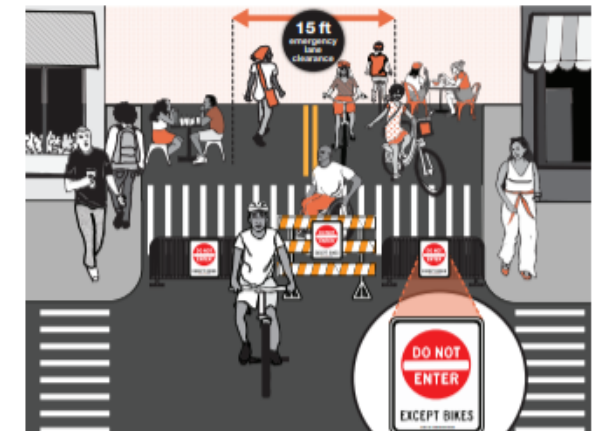
Limited Local Access



Street designated for pedestrian and cyclist use and enjoyment. Local vehicle access is allowed for limited use. Drivers are advised to be extremely cautious and to drive 5 MPH or slower on the Open Streets. **No through traffic permitted while Open Streets are in effect. Only vehicles that must do the following on the street:**

- Parking (all regulations apply)
- Picking up/dropping off
- Local deliveries
- Emergency vehicles
- Access-A-Ride
- Utility vehicles
- City service vehicles

Full Closure and Full Closure: Schools



Full Closures allow for a range of car-free activities that support local businesses and schools, and create a safe place for New Yorkers to gather. These Open Streets support multiple uses, including outdoor dining, learning, and community programming. **No vehicle access and no parking allowed when Full Block Closures are in effect. A 15 foot emergency lane must be clear at all time, for emergency vehicle access.**

Please visit nyc.gov/openstreets for more information.



PA1 | ENVIRONMENTAL MONITORING

Air

- the dust monitoring stations, **six (6) for PA1**, are the minimum number proposed
- number & placement **aligns with the phasing and work activities** in progress and will be revised and modified as the work location and type changes.
- there are additional air monitoring stations that will be installed by HNTB/LiRo under the **Community Air Monitoring Program (CAMP)** required by NYSDEC for areas where Manufactured Gas Products (MGPs) may be encountered
- the contractor is required to install and utilize air monitoring adjacent to the various work sites to meet OSHA worker protection requirements

Other

- when and if work activities involving lead or asbestos abatement are initiated, air monitoring specific to those activities will be undertaken as necessary and if required
- items will be disposed of as per **EPA guidelines**

PA1 | ENVIRONMENTAL MONITORING - SOILS

The community's health concerns are the top priority of the NYCDDC and ESCR Project Team.

Multiple sampling programs were performed to determine subsurface soil conditions. The multi-tiered oversight of environmental specialists and agencies, apply throughout the project area.


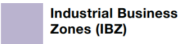

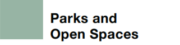






- dust control measures are currently being performed
- erosion control measures are in progress

WHAT WE'VE HEARD

- Call for Art: finalizing selections and looking to make announcement this month
- Salvaging park materials:
 - tree salvage: wood reuse & nature exploration area
 - seal, crab and turtle sculptures
 - park furnishings
 - plant transplants
 - light fixtures – DOT
 - DDC, DOT and Parks working to coordinate future salvage of materials
- Parks interim recreation map:
 - <https://www.nycgovparks.org/planning-and-building/planning/neighborhood-development/east-side-coastal-resiliency/map>
- **Truck Routes:** Construction vehicles, and trucks in general, are expected to access routes throughout the City based on the NYC Truck Route Map (as much as possible) <https://www1.nyc.gov/html/dot/downloads/pdf/2015-06-08-truck-map-combined.pdf> . There is existing on street signage for truck drivers that indicates where these routes exist. Main access for ESCR is at Montgomery Street.



Legend

 Local Truck Route Trucks with an origin or destination for the purpose of delivery, loading or servicing within the respective Borough, shall only operate on designated local routes, except that an operator may operate on a non-designated street for the purpose of arriving at his/her destination. This shall be accomplished by leaving a designated truck route at the intersection that is nearest to their destination, proceeding by the most direct route, and then returning to the nearest designated truck route by the most direct route. If the operator has additional destinations in the same general area, he/she may proceed by the most direct route to his/her next destination without returning to a designated truck route, provided that the operator's next destination does not require that he/she cross a designated truck route.	 Industrial Business Zones (IBZ)
 Through Truck Route Trucks having neither an origin nor a destination within the respective Borough shall restrict the operation of such vehicles to those street segments designated as Through Truck Routes.	 Parks and Open Spaces
 Through Truck Route on Expressway	 Highway Exit
 Through Truck Route on Tunnel	 Commercial Vehicles Prohibited
 Exception 53' Trailers Allowed For definition see information on reverse side.	 Low Vertical Clearance Area

NYC Truck Route Map



WHAT WE'VE HEARD

- **Access to Pier 42:** Connection to Pier 42 amenities directly from East River Park will be possible once Pier 42 Upland Park is completed.



Rendering from October 2021 Construction Approach Presentation

PA1 | COMMUNITY CONSTRUCTION LIAISON

- **Sonia Quinones**

Project Area 1 (PA1)

Sonia Quinones has been a CCL on behalf of the New York City Department of Design and Construction (NYCDDC) for the past seven (7) years. She has been involved with large infrastructure projects in The Bronx and the Tribeca areas of Manhattan. Prior to her tenure with NYCDDC she worked in a law firm and as an executive assistant to “C” level executives in various industries. Sonia believes, *"The most important thing in communication is to hear what isn't being said."* - Peter F. Drucker

Sonia is fluent in Spanish and is excited to join the ESCR team.

ESCRCCL1@ddccr.com #347-628-8724

Joyce Xin is fluent in Mandarin

ESCRCCL1@ddccr.com #929-844-0408

HIRING VIRTUAL RESOURCES EVENT

ESCR Winter Virtual Information Session & Resource Fair

Wednesday, February 2022, 4:00pm-7:00pm

Learn about hiring and subcontracting opportunities related to the East Side Coastal Resiliency (ESCR) Project:

- NYC Department of Design and Construction Office of Diversity and Industry Relations (NYCDDC ODIR)
- General Contractors (GCs)
- The Program and Construction Management Team (PMCM)
- NYC Department of Small Business Services (SBS), Workforce1
- Lower East Side Employment Network (LESEN)

Smaller Breakout Sessions will include:

- Strategies for Successful Employment + Upcoming Opportunities
- Apprenticeship Opportunities in Construction
- Training Opportunities



Work With Us

East Side Coastal Resiliency
www.nyc.gov/escr

EAST SIDE COASTAL RESILIENCY

ESCR Winter Virtual Information Session & Resource Fair

The East Side Coastal Resiliency (ESCR) project is a coastal protection initiative, jointly funded by the City of New York and the federal government, aimed at reducing flood risk due to coastal storms and sea level rise on Manhattan's East Side from East 25th Street to Montgomery Street.

Learn about hiring and subcontracting opportunities related to the East Side Coastal Resiliency (ESCR) Project.

The ESCR project team is hosting a **Virtual Information Session & Resource Fair**. Learn about the project, training, hiring and subcontracting opportunities directly from:

- NYC Department of Design and Construction
- General Contractors
- Program and Construction Management teams

More details to follow.

To receive pre-registration communication, event reminders, future event details, and to learn more about working with the East Side Coastal Resiliency (ESCR) team and the event please visit:
<https://www1.nyc.gov/site/escr/contact/work-with-us.page>

NYC Department of Design and Construction
Office of Community Outreach & Mobilization

NYC **SBS** **NYC**



East Side Coastal Resiliency

The East Side Coastal Resiliency (ESCR) Project is a coastal protection initiative, jointly funded by the City of New York and the federal government, aimed at reducing flood risk due to coastal storms and sea level rise on Manhattan's East Side from East 25th Street to Montgomery Street. The boundaries of this project correspond with the natural "pinch-points" in the 100-year floodplain: areas where the land is higher along the coastline, making it easier to close the system off from water entering from the north and south. The project design integrates flood protection into the community fabric, improving waterfront open spaces and access, rather than walling off the neighborhood. Construction on the East Side Coastal Resiliency project will begin in Fall 2020 and continue through 2025.

 Construction Progress	 Resiliency & Flood Protection	 Project Background & Goals	 Project Design
Construction Notices View our most recent community presentations for updates as we prepare for upcoming construction activities.	Resiliency and Flood Protection Learn more about ESCR's resiliency and the forward-thinking flood protection measures being implemented to protect 110,000 New Yorkers from the impacts of climate change.	Project Background and Goals Read about the history and background of ESCR, and the goals driving this technically complex infrastructure project.	Project Design From flood protection measures to bike lanes and ball fields, the ESCR project is improving open spaces and access in the Lower East Side while strengthening the city's coastline.

NEED MORE INFORMATION?

VISIT US AT: www.nyc.gov/escr

