

# **COMMUNITY ADVISORY GROUP (CAG)**

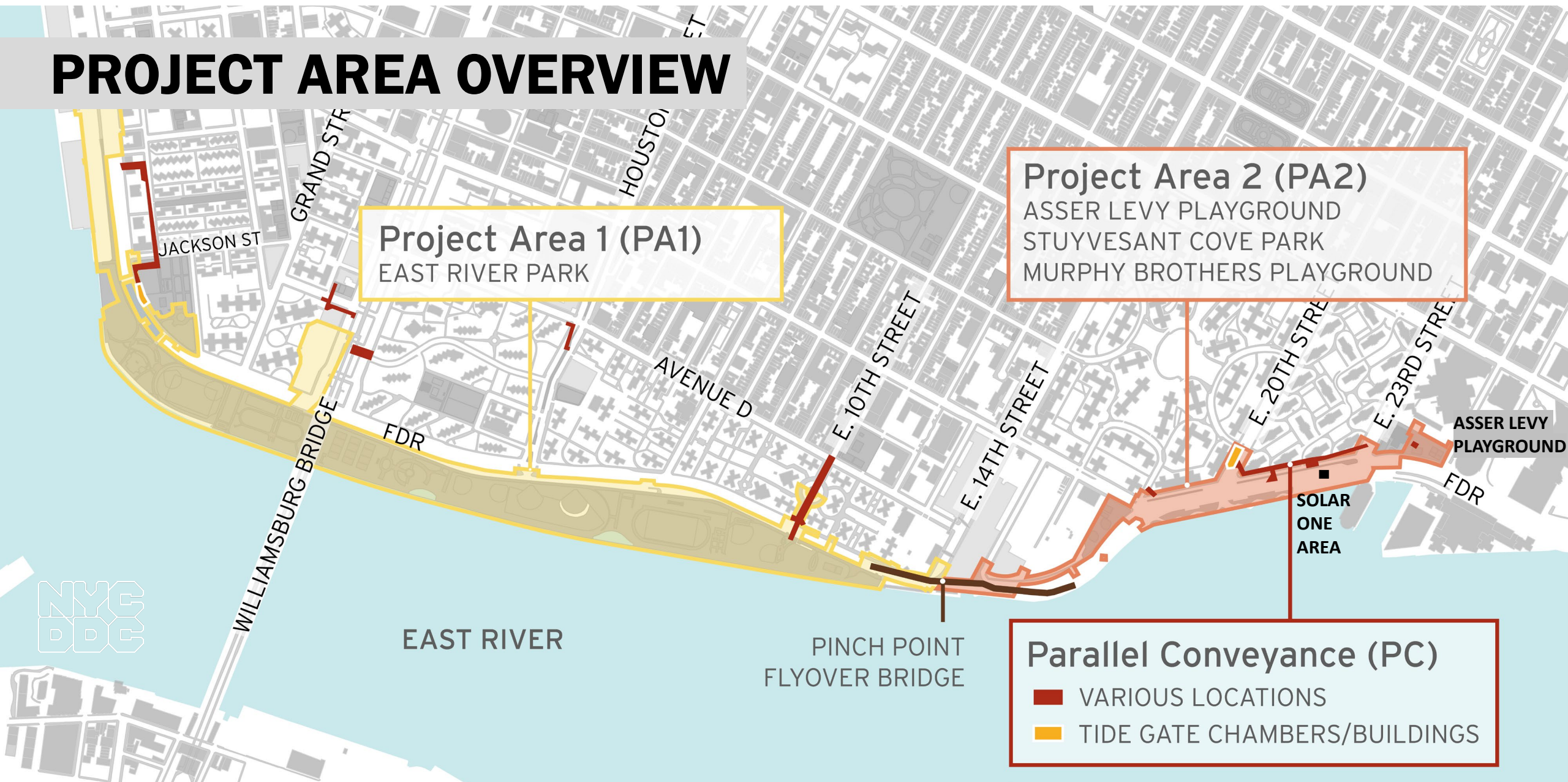
Meeting #17

# HIGHLIGHTS

- Overview of Contracts
- PA 2 Construction Updates
  - November Air Quality Update
  - Hiring Resources Event
- PA1 Construction Update
  - Access
  - Environmental Monitoring
  - What We've Heard
  - CCL
- Parallel Conveyance

# **OVERVIEW OF CONTRACTS**

# PROJECT AREA OVERVIEW



# OVERVIEW OF CONTRACTS

## **Project Area 1 (PA1)**

- Notice to Proceed (NTP) issued to contractor August 16, 2021
- passive lawn installation complete
- partial park closure south of Stanton Street & Greenway closure

## **Project Area 2 (PA2)**

- in construction on phase 2
  - Asser Levy Playground, Stuyvesant Cove Park at E 20<sup>th</sup> Street north to Solar One Area
  - over 650 ft of floodwall installed

## **Parallel Conveyance (PC)**

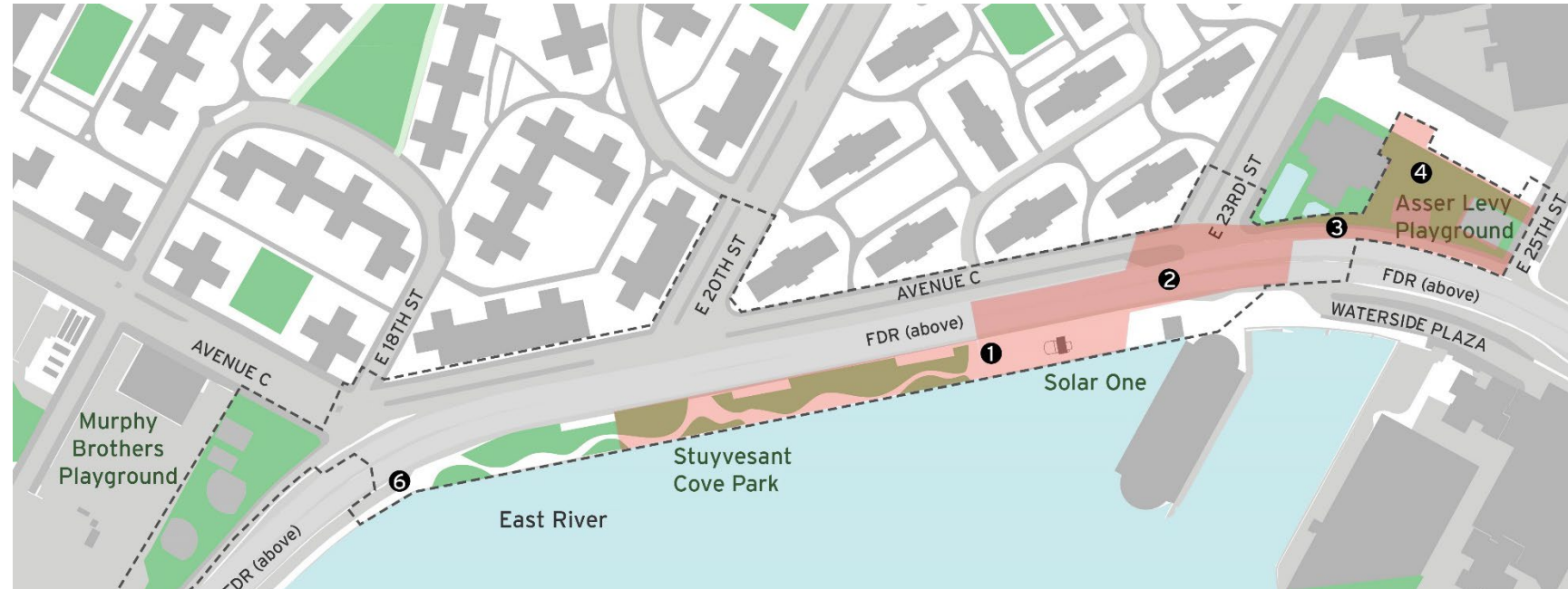
- bid advertised on 11/12/21
- bid opening scheduled for 1/18/21

# **PROJECT AREA 2**

# PA2 | CONSTRUCTION PROGRESS

ALL WORK IS SUBJECT TO CHANGE

1. Stuyvesant Cove Park north of 20<sup>th</sup> St.:
  - pile installation & floodwall construction
2. E 23<sup>rd</sup> St. Intersection:
  - utility work & pile installation
3. West Service Road:
  - pile installation
4. Asser Levy Playground:
  - floodwall foundation & park reconstruction
5. E 15th Street between Ave C and FDR Dr. within Con Edison Facility
  - Sewer reconstruction/coordination for sub-surface investigation
6. FDR Dr. NB exit 7 ramp:
  - lane shift and sewer work





# PA2 | CONSTRUCTION PHOTOS



*Stuyvesant Cove Park Floodwall*



# PA2 | CONSTRUCTION PHOTOS



*Asser Levy Playground reconstruction (looking south)*



*Asser Levy Playground rendering*

# **AIR QUALITY MONITORING**

# AQM | NOVEMBER UPDATE

Work activities at Asser Levy Playground, E23rd Street and Stuyvesant Cove Park focused on pile installation and floodwall foundation construction.

The PM daily value (24-hour TWA) did not surpass the PEL for the month of November.

Levels of Particulate Matter surpassed the PEL for 15-min TWA on two occasions:

- **ALP Monitors: November 9 and 18:** duration of 15 minutes on both days. These readings coincided with lunchtime and the end of shift and thus no construction activities were taking place in this area. As there were parked vehicles near the monitor, it was concluded that the readings are a result of vehicle exhaust fume from idling vehicles and not due to construction.
- Construction activity was closely monitored, and dust mitigation techniques were continuously implemented to contain airborne particles due to construction activities.

# HIRING VIRTUAL RESOURCES EVENT

## ESCR Winter Virtual Information Session & Resource Fair

Wednesday, January 26, 2022, 4:00pm-7:00pm

Learn about hiring and subcontracting opportunities related to the East Side Coastal Resiliency (ESCR) Project:

- NYC Department of Design and Construction Office of Diversity and Industry Relations (NYCDDC ODIR)
- General Contractors (GCs)
- The Program and Construction Management Team (PMCM)
- NYC Department of Small Business Services (SBS), Workforce1
- Lower East Side Employment Network (LESEN)

### Smaller Breakout Sessions will include:

- Resume + Interview Support
- Apprenticeship Opportunities in Construction
- Training Opportunities

COMMUNITY ADVISORY GROUP— East Side Coastal Resiliency Project

Work With Us

East Side Coastal Resiliency  
www.nyc.gov/escr

EAST SIDE  
COASTAL  
RESILIENCY

## ESCR Winter Virtual Information Session & Resource Fair

**Wednesday, January 26, 2022  
4:00pm-7:00pm**

The East Side Coastal Resiliency (ESCR) project is a coastal protection initiative, jointly funded by the City of New York and the federal government, aimed at reducing flood risk due to coastal storms and sea level rise on Manhattan's East Side from East 25th Street to Montgomery Street.


**Learn about hiring and subcontracting opportunities related to the East Side Coastal Resiliency (ESCR) Project.**


The ESCR project team is hosting a **Virtual Information Session & Resource Fair**. Learn about the project, training, hiring and subcontracting opportunities directly from:


- NYC Department of Design and Construction
- General Contractors
- Program and Construction Management teams

More details to follow.





To receive pre-registration communication, event reminders, future event details, and to learn more about working with the East Side Coastal Resiliency (ESCR) team and the event please visit:  
<https://www1.nyc.gov/site/escr/contact/work-with-us.page>







Department of  
Design and  
Construction  
Office of Community Outreach & Mobilization





# QUESTIONS

# **PROJECT AREA 1**

# PA 1 | UPCOMING CONSTRUCTION ACTIVITIES

- Link to Project Area 1 Construction Approach (October 2021):  
[https://www1.nyc.gov/assets/escr/downloads/pdf/ESCR\\_PA1\\_ConstructionApproach\\_20211021.pdf](https://www1.nyc.gov/assets/escr/downloads/pdf/ESCR_PA1_ConstructionApproach_20211021.pdf)

## BUILDING DURABLE PROTECTION FOR NYC

### Key Objectives

- Bring full flood protection on-line as quickly as possible
- Maintain public access to a minimum of 42% of the park throughout construction
- Mitigate park closures by providing interim recreation options throughout the neighborhood

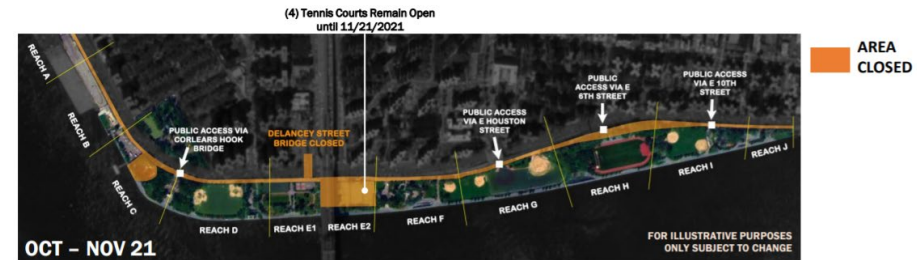
### Construction Priorities

- Maintain public and worker safety during construction
- Ensure constructability and logical sequencing of work
  - Deepest excavation first (Tennis Courts) to improve upland drainage
  - Complex carbon fiber wrapping work on Con Edison transmission line
  - Contiguous stretches to allow for soil settlement



3

## MID-OCTOBER to NOVEMBER 21, 2021



### SUMMARY

- Fields will remain open through the end of league season in November
- Four (4) tennis courts to remain open until November 21, 2021
- Compost Area under construction starting October 2021, for restored lawn area
- Deep sewer excavation begins in Tennis Court area in November 2021
- Shared Use Path fully closed to the public by November 21, 2021. It will be available for Parks Department and Emergency vehicle access.

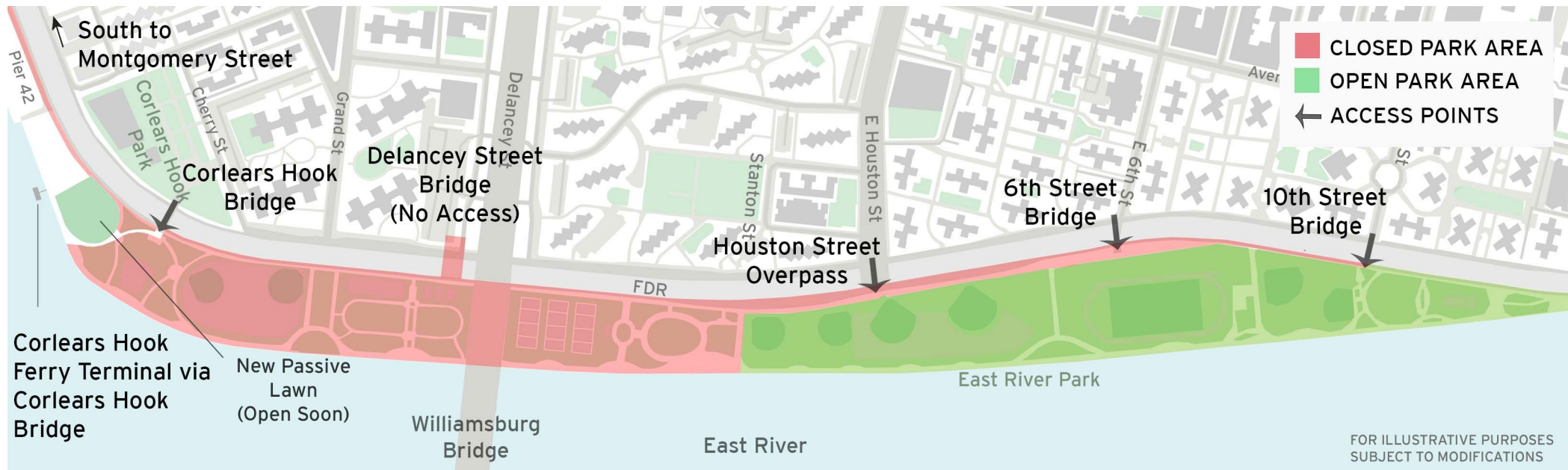


6

*Slides from October 2021 Construction Approach presentation*

# PA 1 | UPCOMING CONSTRUCTION ACTIVITIES

- January:
  - Shallow clearing and grubbing activities will continue in the closed area of park.
  - Shared Use Path closure will continue north to E 10<sup>th</sup> Street with access provided to open amenities.
  - ConEd work to begin in Shared Use Path.
  - Utility work will begin in and adjacent to East River Park.
  - Completion of Amphitheater dismantling.
  - Bridge replacement activities at Delancey Street will begin.
  - Weekly Bulletins will be issued with construction activities.





# PA 1 | AMENITY OVERVIEW SUMMER 2022

Pier 42 Deck  
Completion  
(Parks/EDC  
Project)

Restored Area for  
Open Space



AREA  
CLOSED

## OPEN AMENITIES

- (6) Ball Fields (3,4,5,6,7,8)
- Track and Field
- Field House
- 10th Street Playground
- 10th Street Comfort Station
- 10th Street Playground
- BBQ Area
- Passive Lawn
- Esplanade Reach G through I
- Pier 42 Deck Amenities


# ACCESS AND DETOURS



- Shared Use Path will be closed north to E 10<sup>th</sup> Street during this phase and closed fully later this year
- Bicycle detour shown here
- Additional bicycle and pedestrian signage are currently being coordinated with DOT and Parks
- Safe access will be provided at all open park entrances and to open park amenities
- Access provided to Emergency Vehicles and Parks vehicles

# OPEN STREETS - DOT

- DOT Open Streets:  
<https://www1.nyc.gov/html/dot/html/pedestrians/openstreets.shtml#apply>
- Open Streets Application:  
<https://nycopেনstreetsprogram.s3.amazonaws.com/index.html>
- Deadline: January 28, 2022, for Spring launch



**Overview**  
New York City's Open Streets program transforms streets into public space open to all. These transformations allow for a range of activities that promote economic development, support schools, and provide new ways for New Yorkers to enjoy cultural programming and build community. NYC DOT works with community-based organizations, educational institutions, and groups of businesses to execute Open Streets citywide. There are three types of Open Streets:

**Limited Local Access**



Street designated for pedestrian and cyclist use and enjoyment. Local vehicle access is allowed for limited use. Drivers are advised to be extremely cautious and to drive 5 MPH or slower on the Open Streets. **No through traffic permitted while Open Streets are in effect.** Only vehicles that must do the following on the street:

- Parking (all regulations apply)
- Picking up/dropping off
- Local deliveries
- Emergency vehicles
- Access-A-Ride
- Utility vehicles
- City service vehicles

**Full Closure and Full Closure: Schools**



Full Closures allow for a range of car-free activities that support local businesses and schools, and create a safe place for New Yorkers to gather. These Open Streets support multiple uses, including outdoor dining, learning, and community programming. **No vehicle access and no parking allowed when Full Block Closures are in effect.** A 15 foot emergency lane must be clear at all time, for emergency vehicle access.

Please visit [nyc.gov/openstreets](https://nyc.gov/openstreets) for more information.



# PA1 | ENVIRONMENTAL MONITORING

## Air

- the dust monitoring stations, **six (6) for PA1**, are the minimum number proposed
- number & placement **aligns with the phasing and work activities** in progress and will be revised and modified as the work location and type changes.
- there are additional air monitoring stations that will be installed by HNTB/LiRo under the **Community Air Monitoring Program (CAMP)** required by NYSDEC for areas where Manufactured Gas Products (MGPs) may be encountered
- the contractor is required to install and utilize air monitoring adjacent to the various work sites to meet OSHA worker protection requirements

## Other

- when and if work activities involving lead or asbestos abatement are initiated, air monitoring specific to those activities will be undertaken as necessary and if required
- items will be disposed of as per **EPA guidelines**



# PA1 | ENVIRONMENTAL MONITORING - SOILS

The community's health concerns are the top priority of the NYCDDC and ESCR Project Team.

Multiple sampling programs were performed to determine subsurface soil conditions. The multi-tiered oversight of environmental specialists and agencies, apply throughout the project area.

- dust control measures are currently being performed
- erosion control measures are in progress

# WHAT WE'VE HEARD

- Call for Art:
  - finalizing selections and looking to make announcement this month
- Salvaging park materials:
  - tree salvage: wood reuse & nature exploration area
  - seal, crab and turtle sculptures
  - park furnishings
  - plant transplanting
  - light fixtures – DOT

# PA1 | COMMUNITY CONSTRUCTION LIAISON

- **Sonia Quinones**  
Project Area 1 (PA1)

Sonia Quinones has been a CCL on behalf of the New York City Department of Design and Construction (NYCDDC) for the past seven (7) years. She has been involved with large infrastructure projects in The Bronx and the Tribeca areas of Manhattan. Prior to her tenure with NYCDDC she worked in a law firm and as an executive assistant to “C” level executives in various industries. Sonia believes, *"The most important thing in communication is to hear what isn't being said."* - Peter F. Drucker

Sonia is fluent in Spanish and is excited to join the ESCR team.

# QUESTIONS