

# East Side Coastal Resiliency Construction Update

CB3 Parks Committee Meeting  
Virtual Meeting  
December 9, 2021

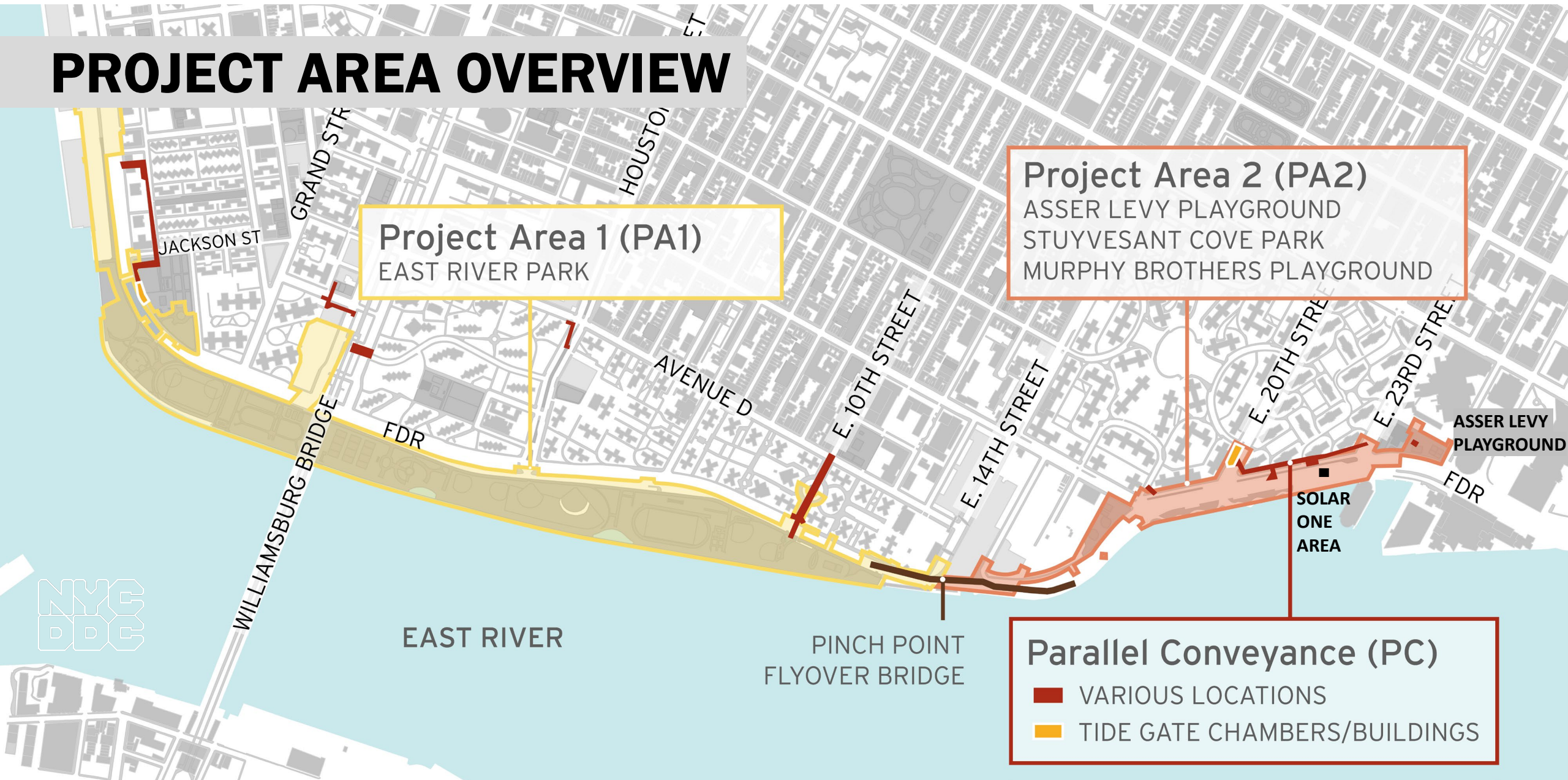


Mayor's Office of  
Resiliency

# HIGHLIGHTS

- Overview of Contracts
- Project Area 2
- Project Area 1

# PROJECT AREA OVERVIEW



# OVERVIEW OF CONTRACTS

## **Project Area 1 (PA1)**

- Notice to Proceed (NTP) issued to contractor August 16, 2021
- passive lawn installation complete
- partial park & Greenway closure south of Stanton Street as of December 6, 2021

## **Project Area 2 (PA2)**

- in construction on phase 2
  - Asser Levy Playground, Stuyvesant Cove Park at E 20<sup>th</sup> Street north to Solar One Area
  - over 500 ft of floodwall installed

## **Parallel Conveyance (PC)**

- bid advertised on 11/12/21
- bid opening scheduled for 1/4/21

---

# Project Area 2



# PA2 | CONSTRUCTION PROGRESS

ALL WORK IS SUBJECT TO CHANGE

## 1. Stuyvesant Cove Park north of 20<sup>th</sup> St.:

- pile installation & floodwall construction

## 2. E 23<sup>rd</sup> St. Intersection:

- utility work & pile installation

## 3. West Service Road:

- pile installation

## 4. Asser Levy Playground:

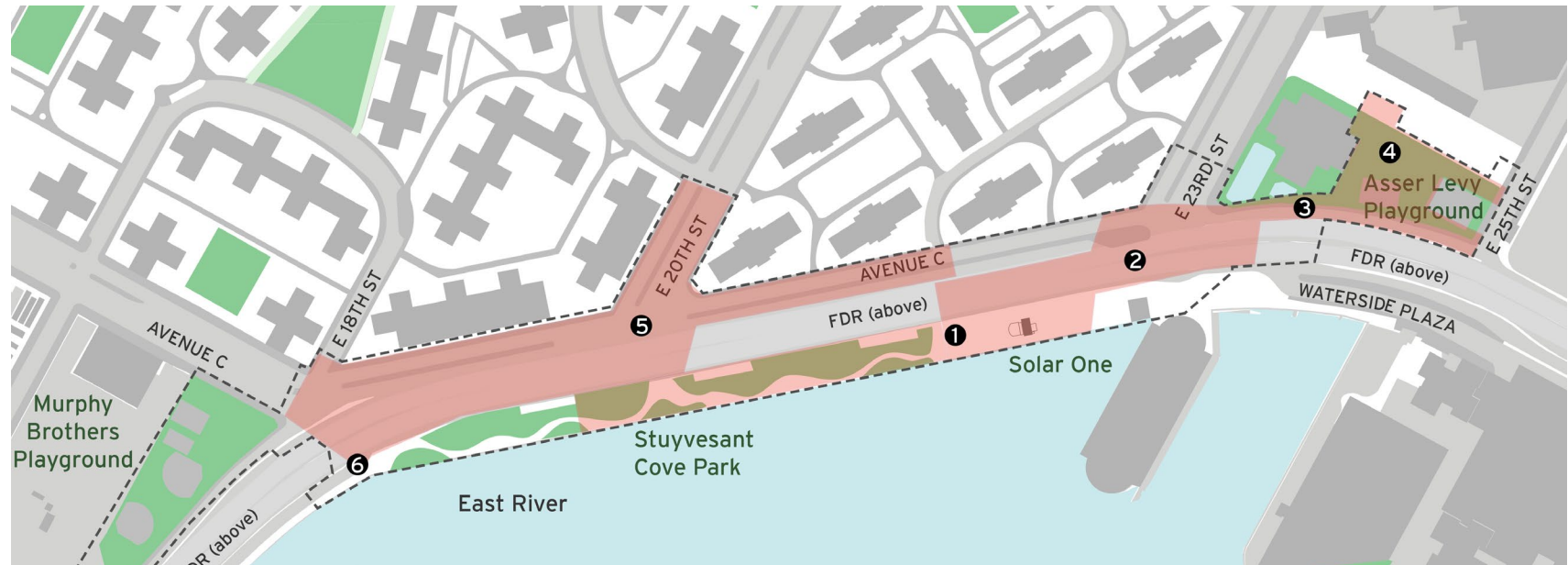
- pile installation, floodwall construction & sidewalk installation

## 5. Avenue C and E 20<sup>th</sup> Street:

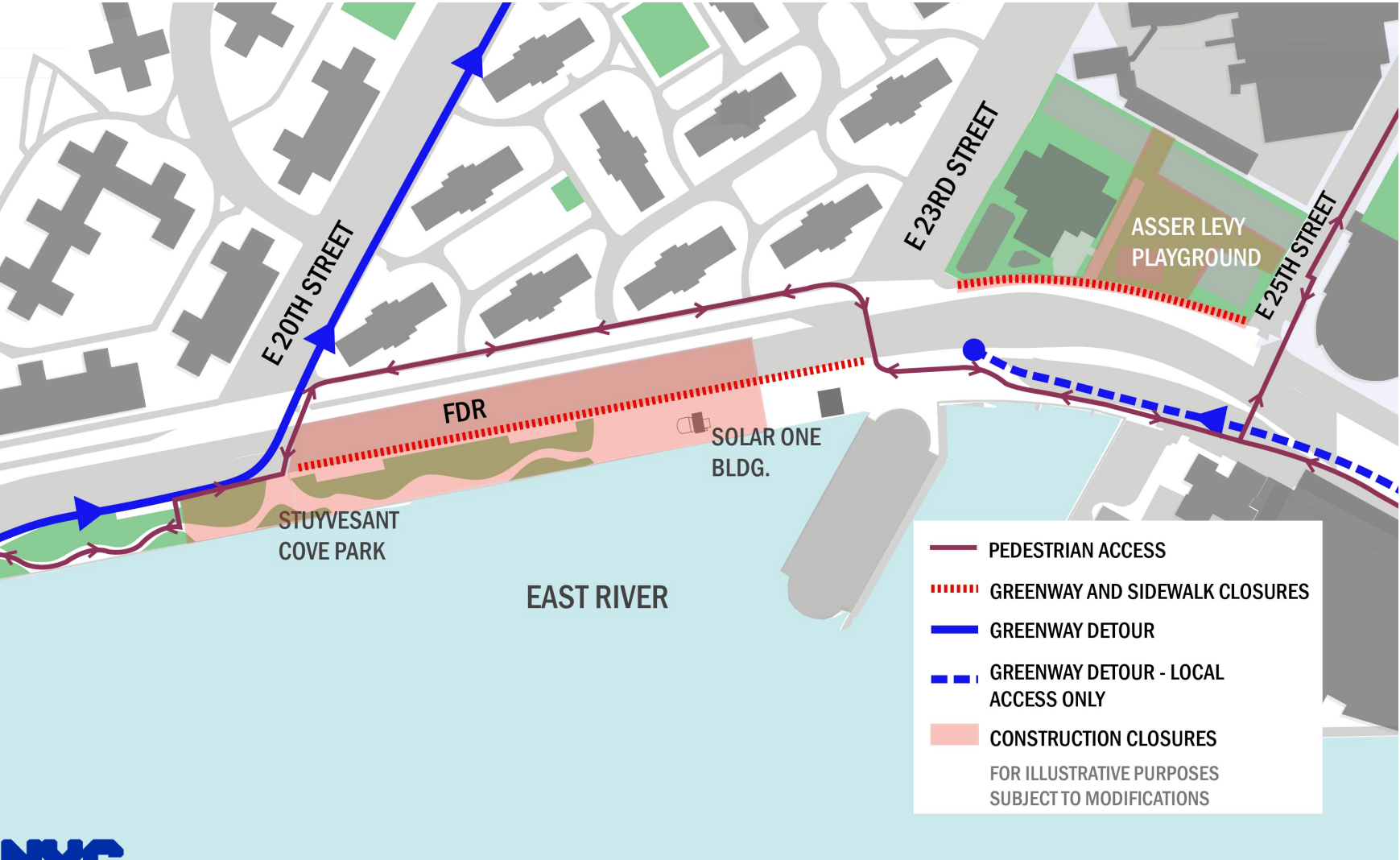
- ConEd utility work

## 6. FDR Dr. NB exit 7 ramp:

- lane shift and sewer work



# PA2 | GATE WORK at E 20<sup>th</sup> Street





# PA2 | CONSTRUCTION PHOTOS

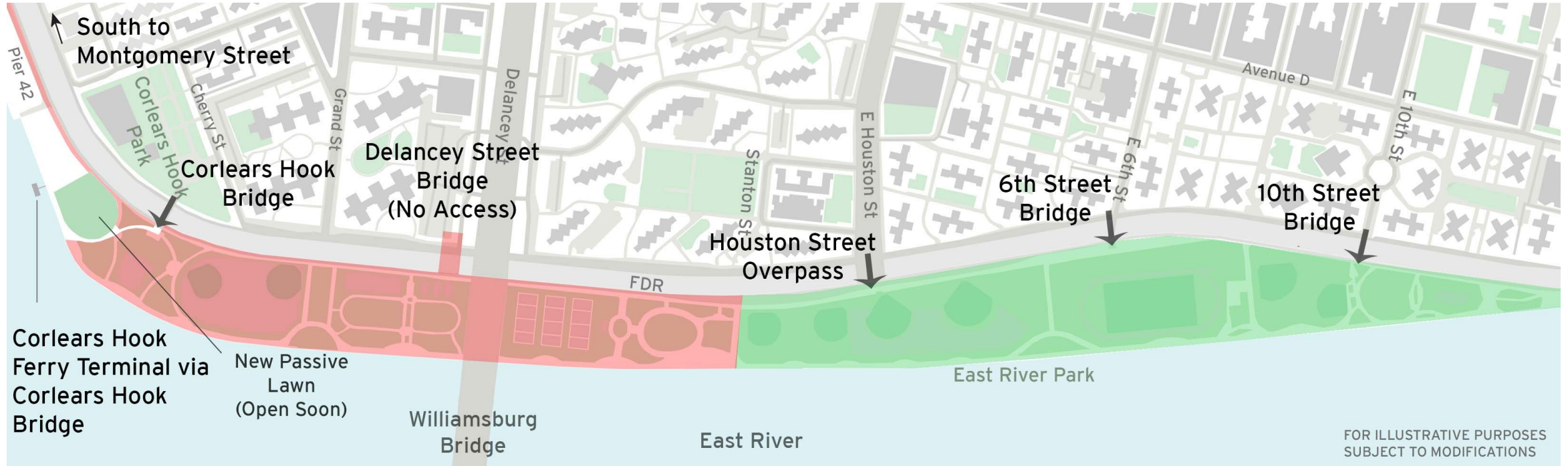




---

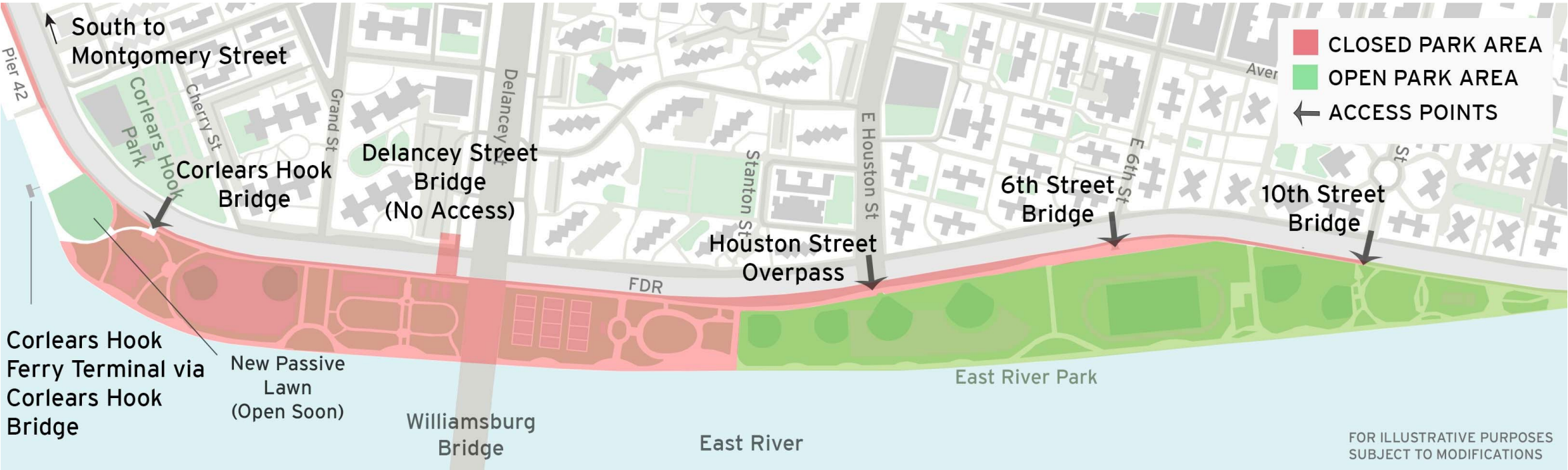
# Project Area 1

# PA 1 | ACCESS



1. East River Park closed south of Stanton Street
2. East River Greenway closed from Montgomery Street north to Stanton Street.
3. Delancey Street Bridge closed. Park access at Houston Street, E 6<sup>th</sup> Street and E 10<sup>th</sup> Street.

# PA 1 | ACCESS



(slide inserted from previous presentation during CB3 meeting to illustrate full approach to end of year 2021.)



# PA 1 | GREENWAY DETOUR





The East Side Coastal Resiliency (ESCR) Project is a coastal protection initiative, jointly funded by the City of New York and the federal government, aimed at reducing flood risk due to coastal storms and sea level rise on Manhattan's East Side from East 25th Street to Montgomery Street. The boundaries of this project correspond with the natural "pinch-points" in the 100-year floodplain: areas where the land is higher along the coastline, making it easier to close the system off from water entering from the north and south. The project design integrates flood protection into the community fabric, improving waterfront open spaces and access, rather than walling off the neighborhood. Construction on the East Side Coastal Resiliency project will begin in Fall 2020 and continue through 2025.

## Construction Progress

**Construction Notices**  
View our most recent community presentations for updates as we prepare for upcoming construction activities.

## Resiliency & Flood Protection

### Resiliency and Flood Protection

Learn more about ESCR's resiliency and the forward-thinking flood protection measures being implemented to protect 110,000 New Yorkers from the impacts of climate change.

## Project Background & Goals

### Project Background and Goals

Read about the history and background of ESCR, and the goals driving this technically complex infrastructure project.

## Project Design

From flood protection measures to bike lanes and ball fields, the ESCR project is improving open spaces and access in the Lower East Side while strengthening the city's coastline.

