

COMMUNITY ADVISORY GROUP (CAG)

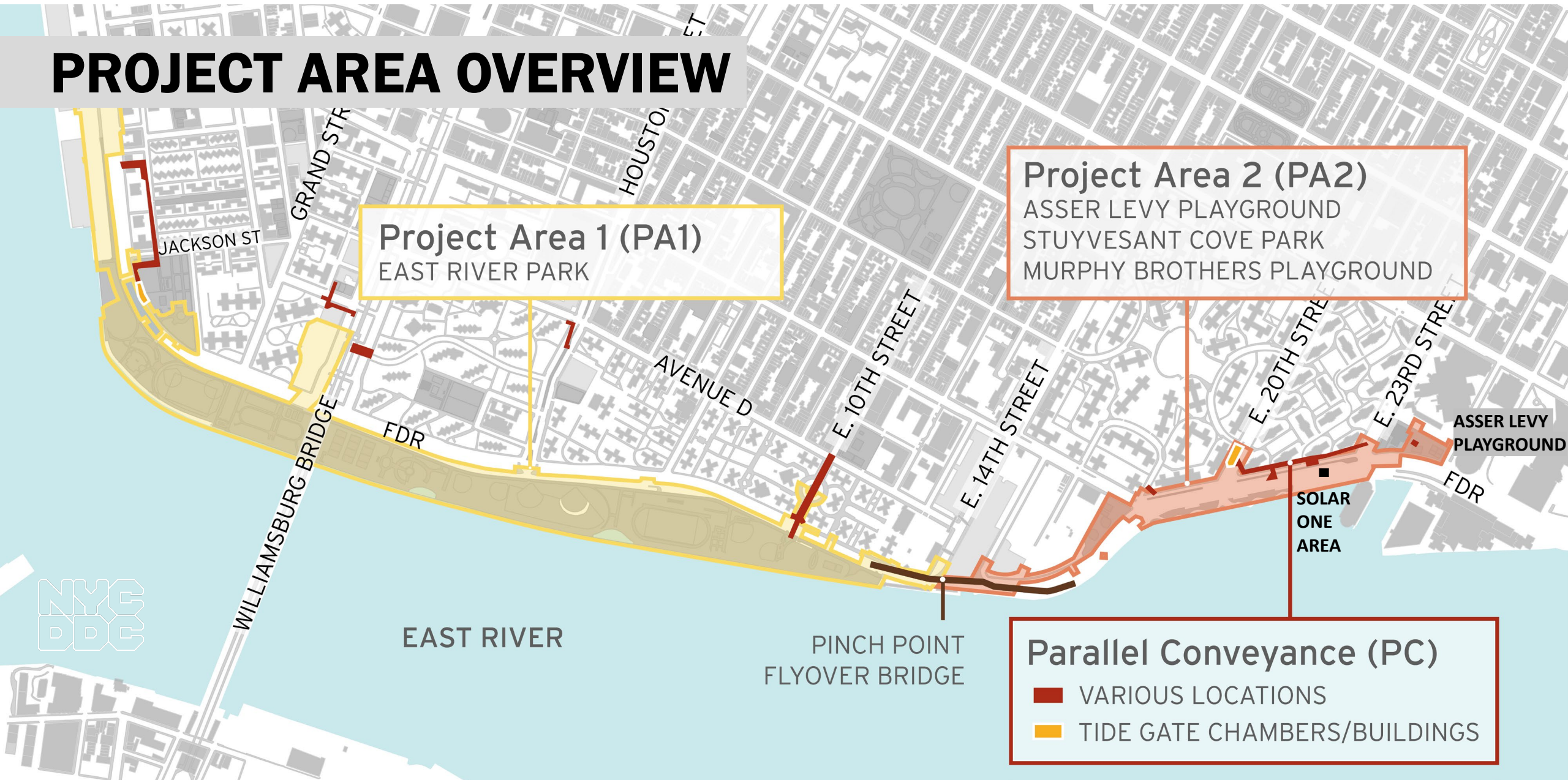
Meeting #16

HIGHLIGHTS

- Overview of Contracts
- PA 2 Construction Updates
 - September Air Quality Update
 - October Air Quality Update
- PA1 Construction Update & Amenities Overview
 - Access
 - What We've Heard
 - Interim Recreation

OVERVIEW OF CONTRACTS

PROJECT AREA OVERVIEW



OVERVIEW OF CONTRACTS

Project Area 1 (PA1)

- Notice to Proceed (NTP) issued to contractor August 16, 2021
- passive lawn installation complete
- temporary restraining order lifted
- partial park closure south of Stanton Street & Greenway closure to commence December 6, 2021

Project Area 2 (PA2)

- in construction on phase 2
 - Asser Levy Playground, Stuyvesant Cove Park at E 20th Street north to Solar One Area
 - over 650 ft of floodwall installed

Parallel Conveyance (PC)

- bid advertised on 11/12/21
- bid opening scheduled for 1/4/21

PROJECT AREA 2

PA2 | CONSTRUCTION PROGRESS

ALL WORK IS SUBJECT TO CHANGE

1. Stuyvesant Cove Park north of 20th St.:

- pile installation & floodwall construction

2. E 23rd St. Intersection:

- utility work & pile installation

3. West Service Road:

- pile installation

4. Asser Levy Playground:

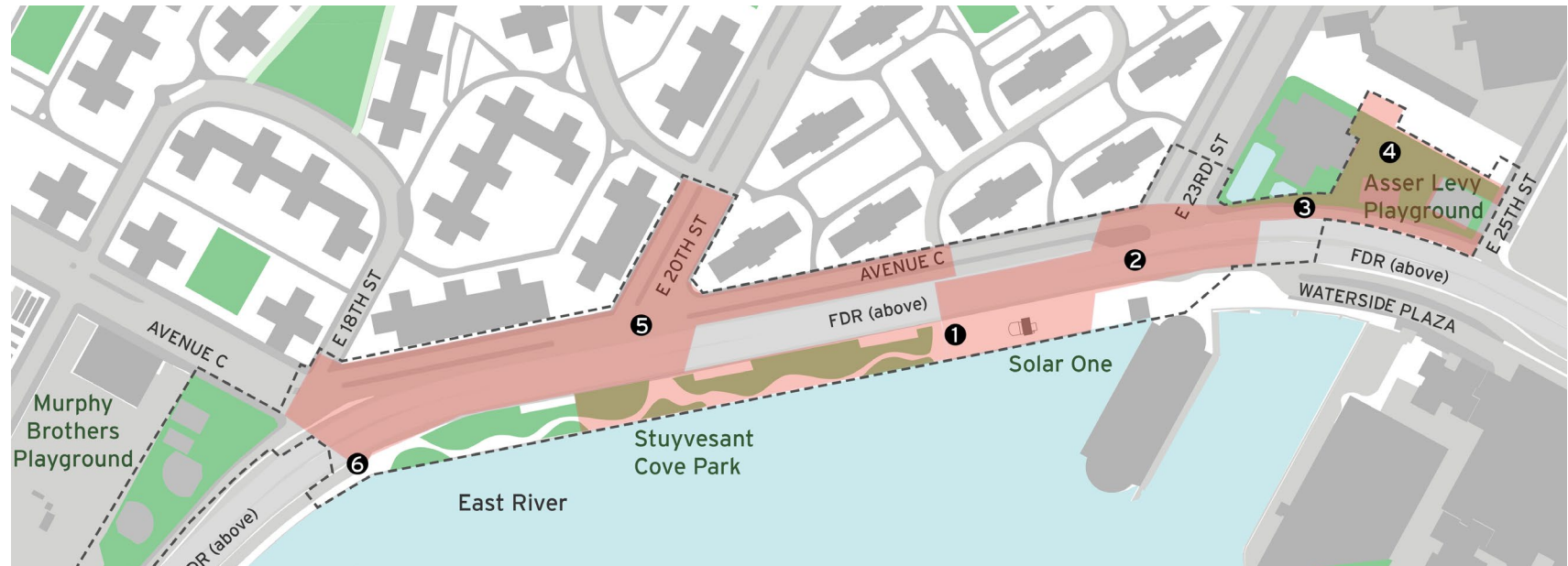
- pile installation, floodwall construction & sidewalk installation

5. Avenue C and E 20th Street:

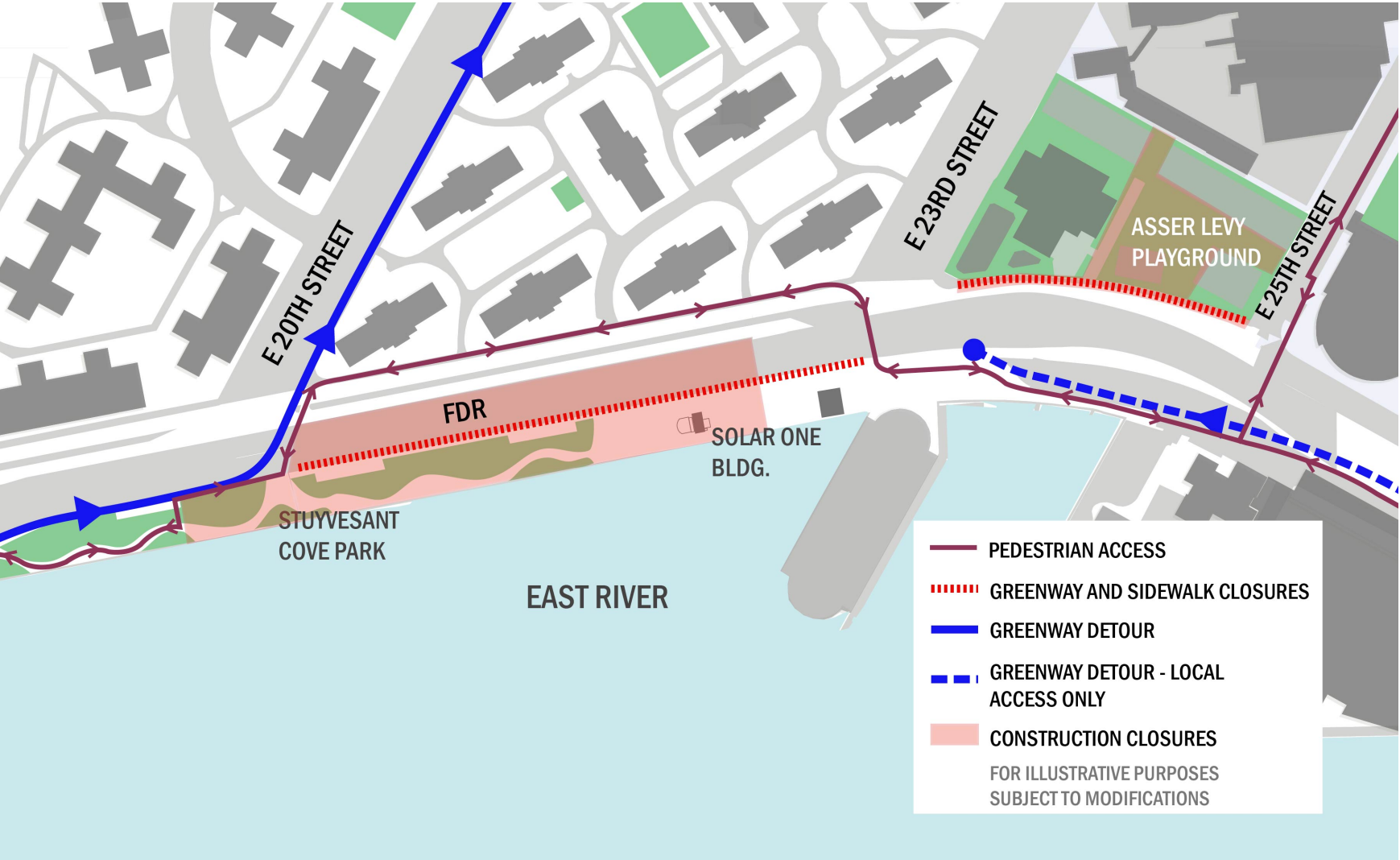
- ConEd utility work

6. FDR Dr. NB exit 7 ramp:

- lane shift and sewer work



PA2 | GATE WORK at E 20th Street



PA2 | CONSTRUCTION PHOTOS



AIR QUALITY MONITORING

AQM | SEPTEMBER UPDATE

Work activities at Asser Levy Playground, E23rd Street and Solar One focused on pile installation and floodwall foundation construction.

The PM daily value (24-hour TWA) did not surpass the PEL for the month of September.

Levels of Particulate Matter surpassed the PEL for 15-min TWA on several occasions:

- **ALP Monitors: September 1, 16, 20 and 23:** durations were between 15 minutes and 51 minutes due to the proximity of the excavator machine to the air monitor.
- **SO Monitors: September 20, 21 and 22:** durations were between 2 minutes and 40 minutes. When the downwind monitor was determined, it was below the action and PEL limits, which shows that particulates did not migrate out of the immediate construction area.
- Construction activity was closely monitored, and dust mitigation techniques were continuously implemented to contain airborne particles due to construction activities.

AQM | OCTOBER UPDATE

Work activities at Asser Levy Playground, E23rd Street and Solar One focused on pile installation and floodwall foundation construction. SO-S3 monitor was relocated further south to capture work around E 20th Street.

The PM daily value (24-hour TWA) did not surpass the PEL for the month of October.

Levels of Particulate Matter surpassed the PEL for 15-min TWA on several occasions:

- **ALP Monitors: October 15:** duration of 15 minutes. No construction activities were taking place in this area, at this time.
- **SO Monitors: October 4 and 21 :** durations were between 27 minutes and 12 minutes. First occurrence started before construction activities began and was likely attributed to an idling construction vehicle. Second occurrence was brief and wind speeds were low, which shows that particulates did not migrate out of the immediate construction area.
- Construction activity was closely monitored, and dust mitigation techniques were continuously implemented to contain airborne particles due to construction activities.

PROJECT AREA 1

PA 1 | UPCOMING CONSTRUCTION ACTIVITIES

- 12/2 and 12/3: Contractor to re-mobilize and install Greenway detour signs
- 12/6: Contractor to install construction fencing closing the Greenway and East River Park south of Stanton Street or Ballfield #3
- **Week of 12/6 through December:** Clearing and grubbing activities will commence in closed area of park through month of December. Utility work will begin in and adjacent to East River Park. Weekly Bulletins will be issued with construction activities.

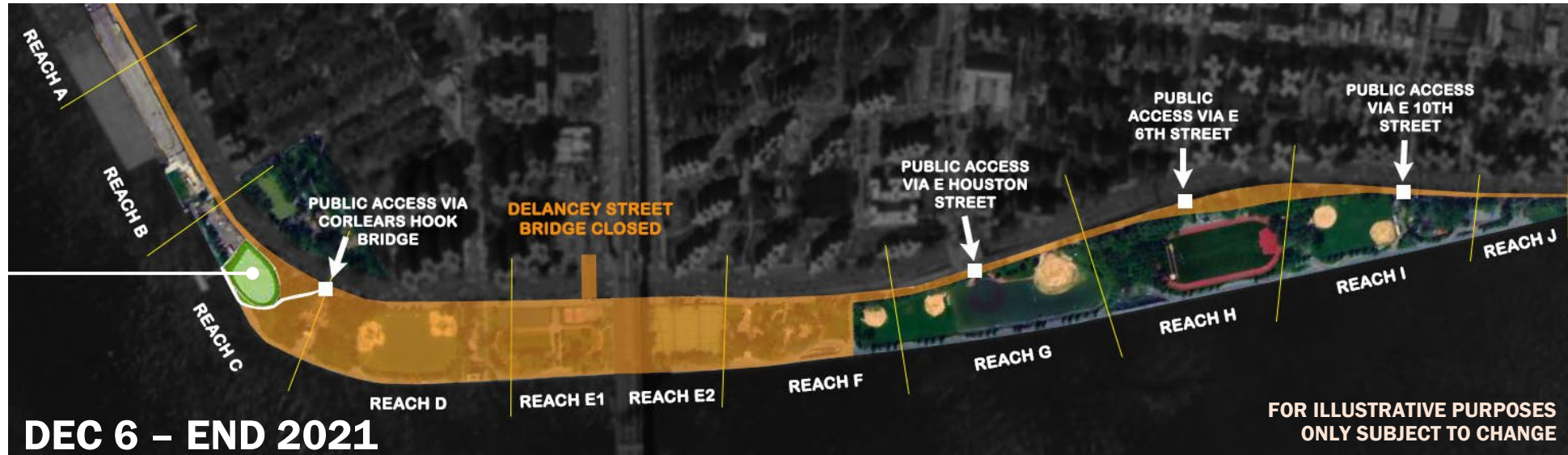


ACCESS AND DETOURS



- Shared Use Path (Greenway) will be fully closed starting December 6th for pedestrian safety throughout the construction of the project
- Greenway bicycle detour shown here
- Alternate bicycle and pedestrian detours are currently being coordinated with DOT and Parks
- Ferry access and signage currently being coordinated with EDC
- Safe access will be provided at all open park entrances and to all open park amenities
- ADA access to park open areas will be provided

PA 1 | AMENITY OVERVIEW DEC 6 - END 2021



OPEN AMENITIES

- (6) Ball Fields (3,4,5,6,7,8)
- Track and Field
- Field House
- 10th Street Playground
- 10th Street Comfort Station
- 10th Street Playground
- BBQ Area
- Basketball Courts
- Passive Lawn
- Esplanade Reach G through J

PA 1 | AMENITY OVERVIEW SUMMER 2022



OPEN AMENITIES

- (6) Ball Fields (3,4,5,6,7,8)
- Track and Field
- Field House
- 10th Street Playground
- 10th Street Comfort Station
- 10th Street Playground
- BBQ Area
- Passive Lawn
- Esplanade Reach G through I
- Pier 42 Deck Amenities

PA 1 | AMENITY OVERVIEW SUMMER 2023



OPEN AMENITIES

- (3) Ball Fields (1,2,6)
- Track and Field
- Track House
- Amphitheater
- Nature Exploration and Water Play
- Esplanade Reach G through I
- Passive Lawn
- Pier 42 Deck Amenities
- Pier 42 Upland Park

PA 1 | AMENITY OVERVIEW SUMMER 2024



OPEN AMENITIES

- (2) Ball Fields (1,2)
- Track and Track House
- Amphitheater
- BBQ Area
- Nature Exploration and Water Play
- (12) Tennis Courts & Tennis House
- Esplanade Reach C through F
- Lawn & Multiuse Turf
- Pier 42 Deck Amenities
- Pier 42 Upland Park

PA 1 | AMENITY OVERVIEW SUMMER 2025



OPEN AMENITIES

- (2) Ball Fields (1,2)
- Track and Track House
- Amphitheater
- BBQ Area
- Nature Exploration and Water Play
- (12) Tennis Courts & Tennis House
- Esplanade Reach C through F
- Lawn & Multiuse Turf
- Pier 42 Deck Amenities
- Pier 42 Upland Park

PA 1 | AMENITY OVERVIEW SUMMER 2026



OPEN AMENITIES

- (5) Ball Fields (1,2,3,4,5)
- Track and Track House
- Amphitheater BBQ Area
- Lawn & Multiuse Turf
- Nature Exploration and Water Play
- (12) Tennis Courts & Tennis House
- Esplanade Reach C through G & J
- Basketball Courts
- 10th Street Playground
- 10th Street Comfort Station
- Pier 42 Deck Amenities
- Pier 42 Upland Park

LATE 2026 PROJECT COMPLETION



ALL AMENITIES OPEN

WHAT WE'VE HEARD

- **ConEd work**
 - will be completed in continuous sections
- **Barging materials**
 - yes, the Contractor is planning to complete much of the esplanade work from the barges and transport bulk materials
- **Fireboat House**
 - Parks & DDC to follow up with LESEC in the coming weeks
- **BBQ's (Parks)**
 - new BBQs were installed at Little Flower Playground, Dry Dock, and Al Smith
- **Parallel Conveyance**
 - DEP to attend future 2022 CAG meeting to review
- **Soil/fill settlement**
 - continuous monitoring of settlement to meet project specifications

INTERIM RECREATION

PIER 42 (PARKS & EDC)

EDC website for Pier 42:

<https://edc.nyc/project/pier-42>.

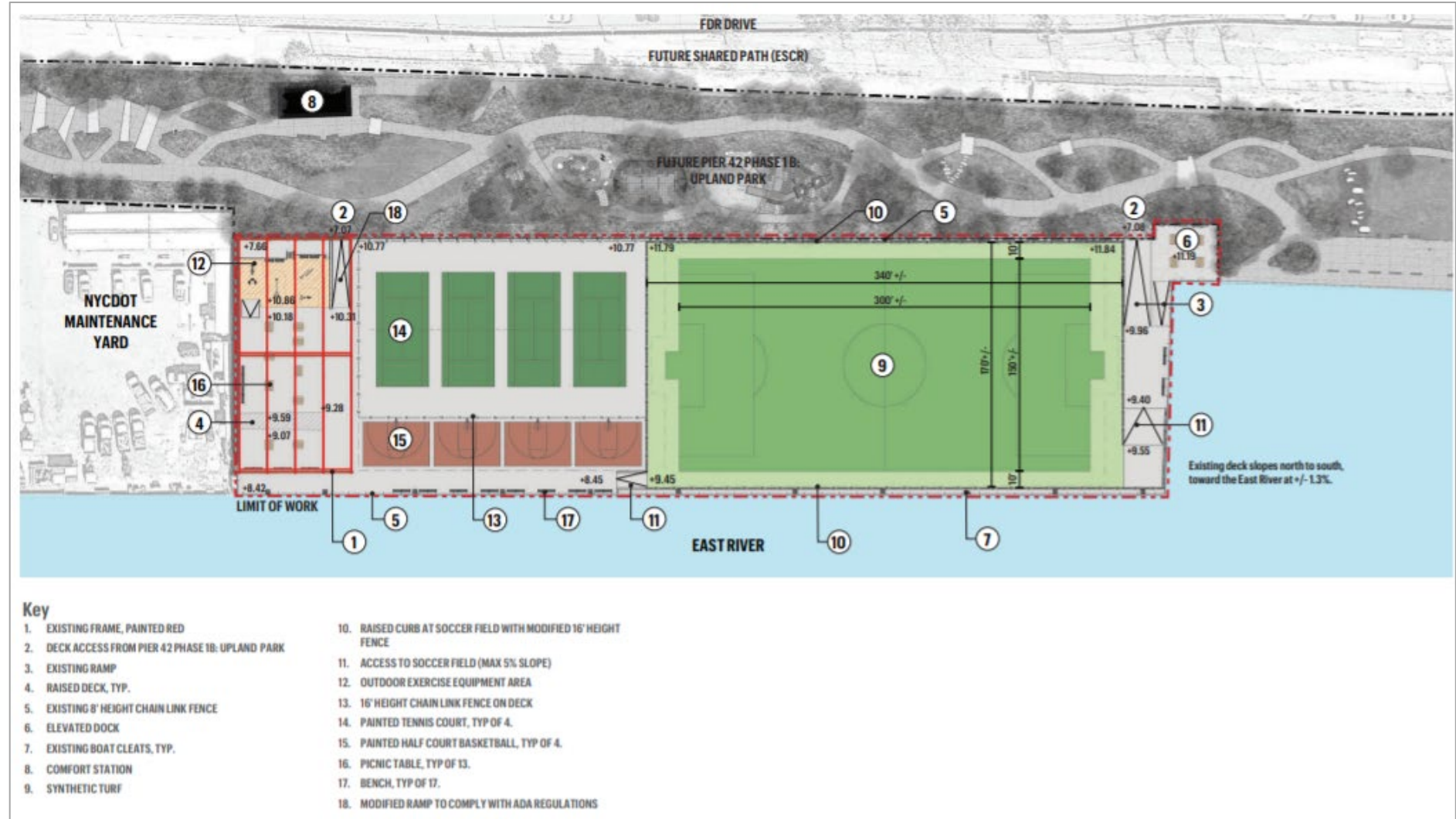
This slide is from the
March 2020

presentation:

<https://edc.nyc/sites/default/files/2020-12/NYCEDC-Pier42-Community-Meeting-at-Gouverneur-Gardens.pdf>.

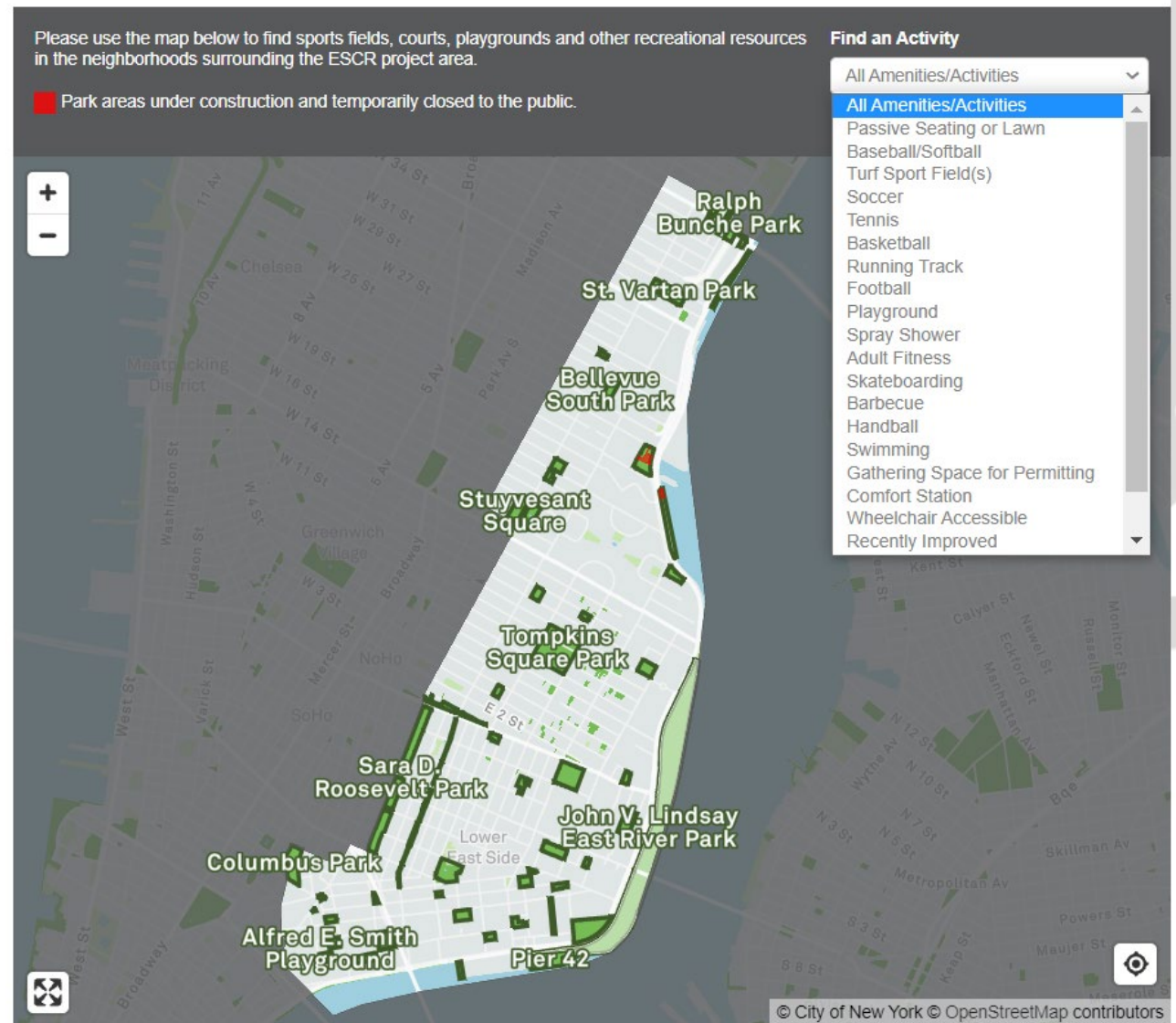
Amenities:

- soccer field
- (4) tennis courts
- (4) half basketball courts
- outdoor exercise area
- picnic tables
- benches



INTERIM RECREATION (PARKS)

- Neighborhood Recreational Resources webpage:
<https://www.nycgovparks.org/planning-and-building/planning/neighborhood-development/east-side-coastal-resiliency/map>
- Parks Interim Recreation Presentation:
<https://www1.nyc.gov/assets/escr/downloads/pdf/ESCR-Interim-Rec-CB3-Update-Spring-2021-FINAL.pdf>



QUESTIONS