

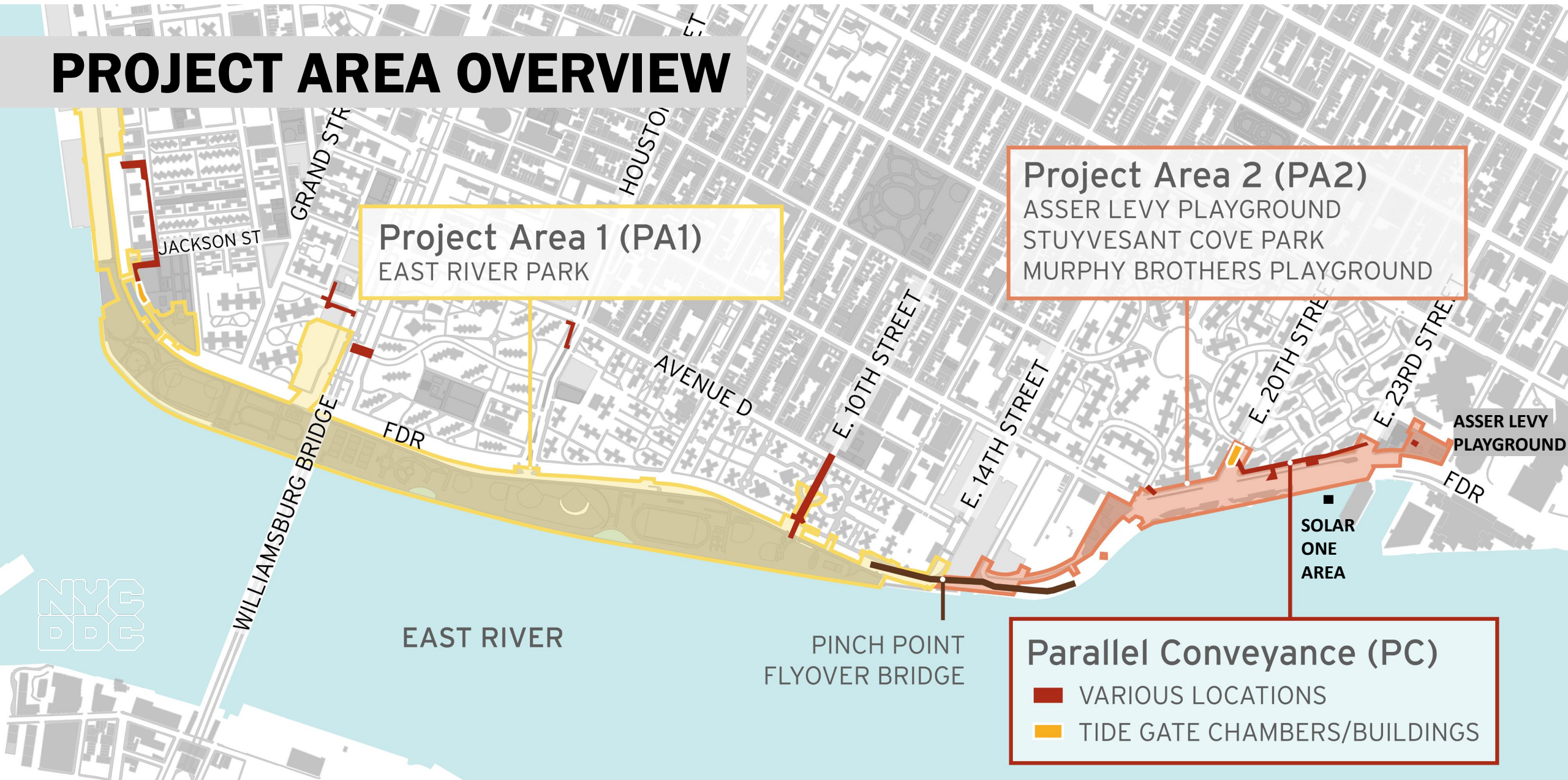
COMMUNITY ADVISORY GROUP (CAG)

Meeting #11

HIGHLIGHTS

- Overview of Contracts & Construction Phase Updates
- Environmental Items
 - CAG Letter 1 - Air
 - ESCR Quarterly Air Quality Monitoring Report
 - CAG Letter 2 – Soils
- Section 3 / MWBE
- What We've Heard

PROJECT AREA OVERVIEW



OVERVIEW OF CONTRACTS

Project Area 1 (PA1)

- contract awarded to apparent low bidder
- East River Park open through Summer 2021

Project Area 2 (PA2)

- in construction on phase 1
 - Asser Levy Playground & Stuyvesant Cove Park Solar One Area

Parallel Conveyance (PC)

- bid advertisement in the coming weeks

CONSTRUCTION ACTIVITIES

PA2 | CONSTRUCTION PROGRESS

ALL WORK IS SUBJECT TO CHANGE

Typical Construction Activities	PA2: Phase 1 Work Locations (see map below)					Estimated Task Completion Date
	1	2	3	4	5	
	Stuyvesant Cove Park Solar One Area	E 23rd St. under FDR Drive	FDR Drive East Service Road	FDR Drive West Service Road	Asser Levy Playground	
A. Test Pits						Q2 2021
B. Utility Work			(T&P)	(P)		Q2 2021
C. Pile Installation		(T&P)				Q3/4 2021
D. Flood Wall Foundation	(P)				(P)	Q3/4 2021
E. Concrete Flood Wall						Q4 2021
F. Site Restoration						Q1/Q2 2022

LEGEND

(T) Traffic / (P) Pedestrian Detours

NEAR COMPLETION

IN PROGRESS

★ NIGHT WORK

ALL WORK SUBJECT TO CHANGE



PA2 | SITE PHOTOS



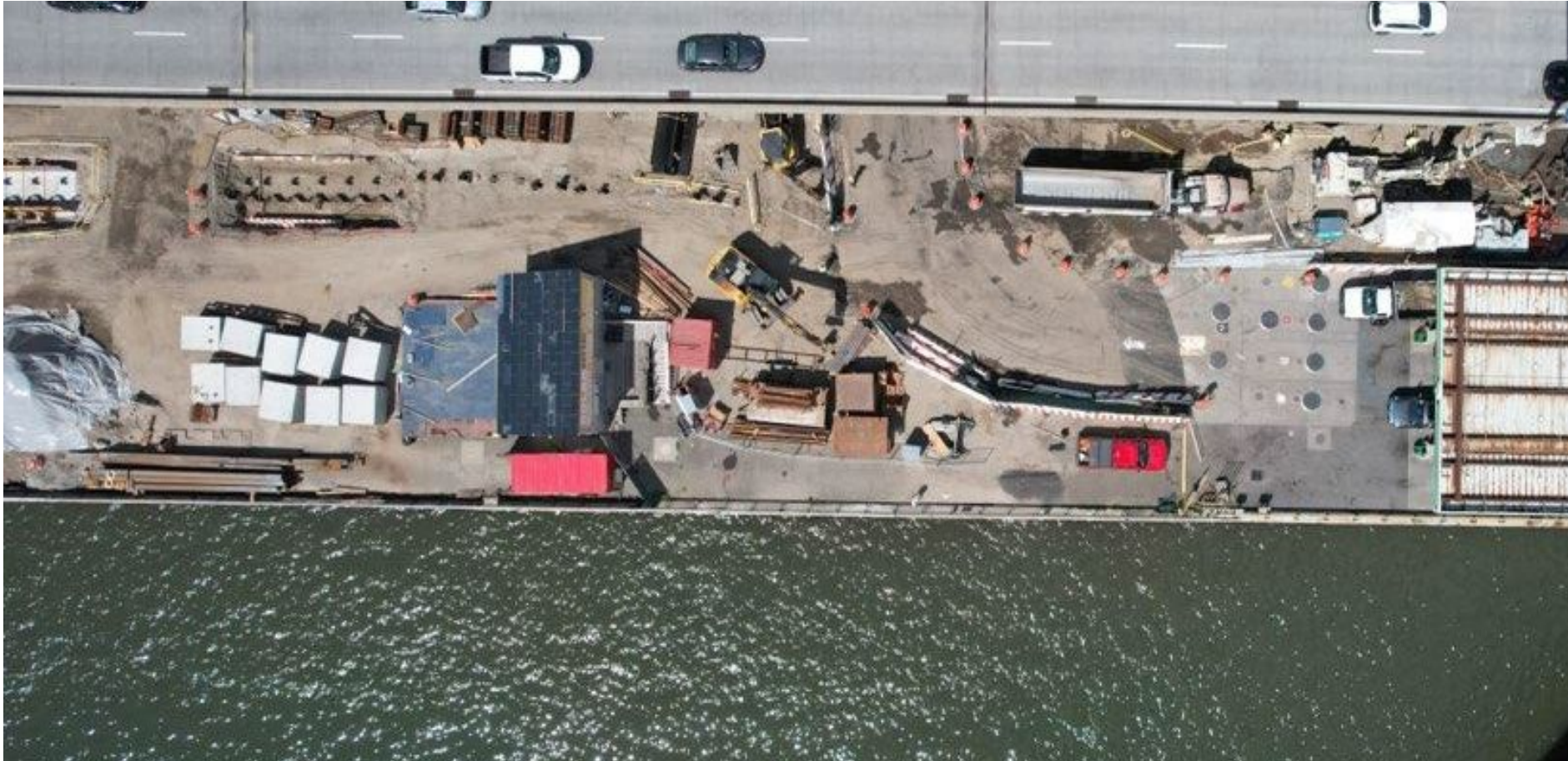
- Sheet piles: Asser Levy Playground (June 2021)

PA2 | SITE PHOTOS



- Sheet piles: Asser Levy Playground (June 2021)

PA2 | SITE PHOTOS



- Sheet Piles and flood wall foundation:
North End of
Stuyvesant Cove
Park near the E.
23rd Street entrance
and Solar One
Building (June 2021)

ENVIRONMENTAL

- CAG Letter 1 - Air
- ESCR Quarterly Air Quality Monitoring Report
- CAG Letter 2 – Soils

CAG LETTER 1 AIR

CAG LETTER 1 AIR (slide updated from CAG Mtg #9)

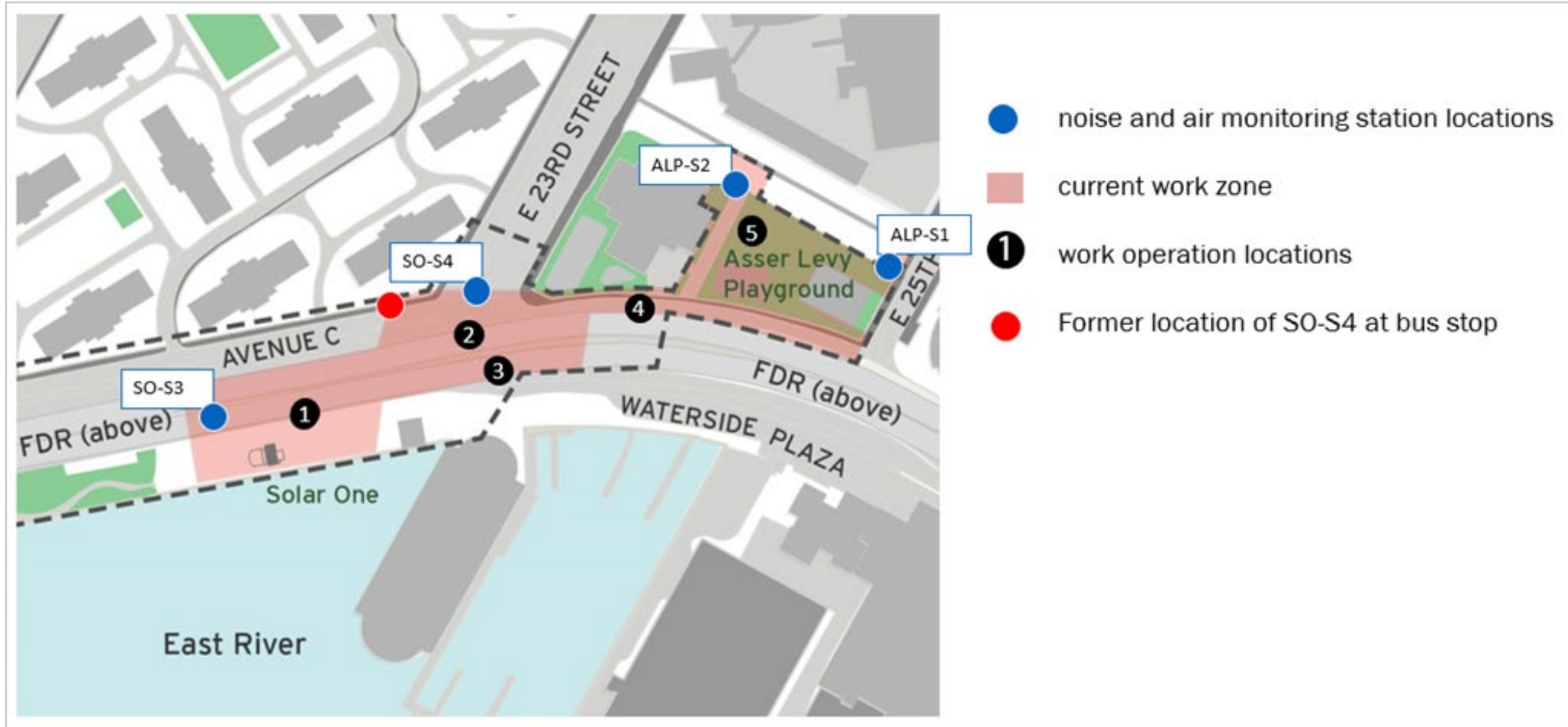
Commitments

- noise and air quality commitments/mitigation made in FEIS and Record of Decision issued for ESCR
- **particulate matter** and **volatile organic compounds (VOCs)** are the substances monitored per the **FEIS** (Environmental Statement) and **NYSDEC-approved Mitigation Work Plan** included as an attachment to the Memorandum of Agreement between the City of NY and NYSDEC

Stations

- the dust monitoring stations, **six (6) PA1** and **four (4) for PA2**, are the minimum number proposed
- number & placement **aligns with the phasing and work activities** currently in progress and will be revised and modified as the work location and type changes.
- there are additional air monitoring stations installed by HNTB/LiRo under the **Community Air Monitoring Program (CAMP)** required by NYSDEC for areas where Manufactured Gas Products (MGPs) may be encountered
- the contractor is required to install and utilize air monitoring adjacent to the various work sites to meet OSHA worker protection requirements
- work activities involving lead or asbestos abatement are initiated, air monitoring specific to those activities will be undertaken

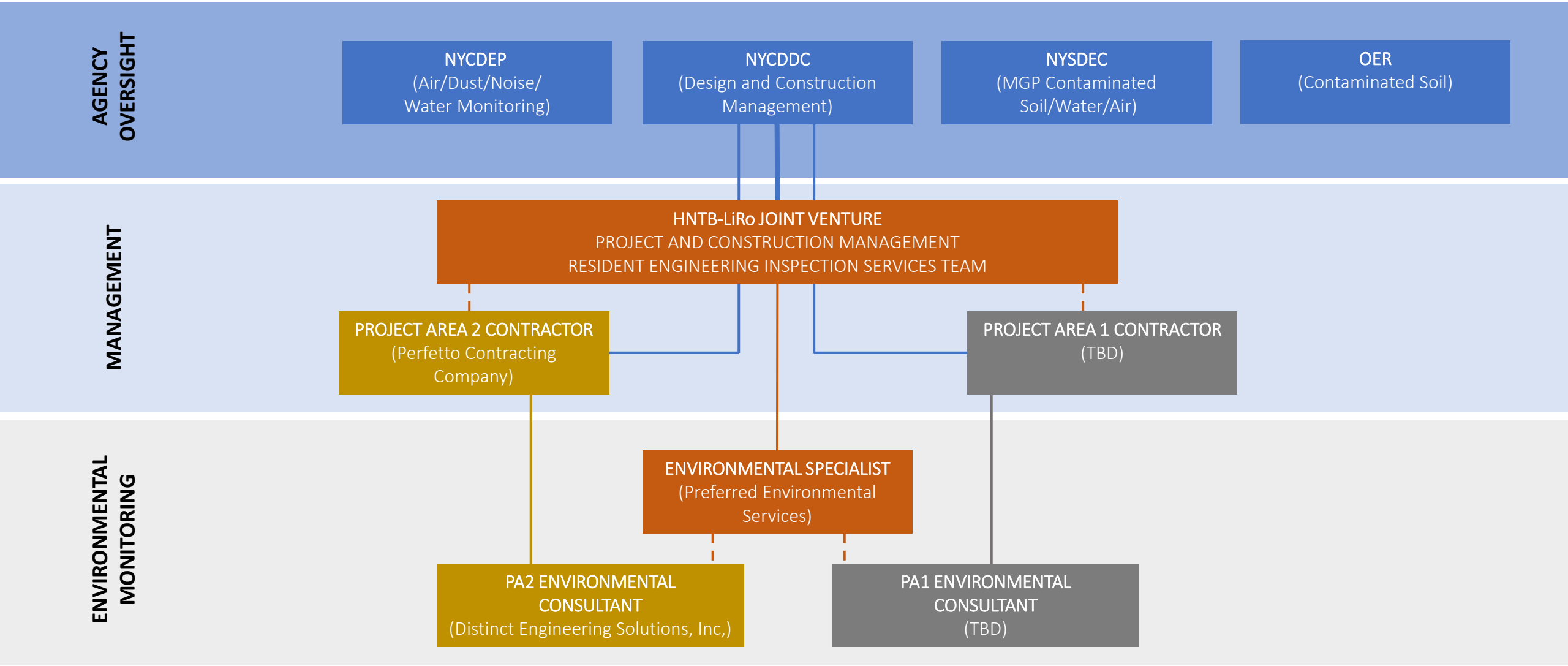
CAG LETTER 1 AIR | MONITORING STATIONS



CAG LETTER 1 AIR

- Updated Hierarchy Chart (next slide)
- Air Monitor Locations:
 - Minimums are as determined by the HNTB-LiRo Environmental Team during the preconstruction phase based upon the proposed phasing and work activities.
 - The final number and exact locations are to be determined and as directed by the Engineer, HNTB-LiRo Joint Venture as work progresses.
 - For PA 2, the number and placement proposed by the contractor and environmental specialist and subconsultant for this phase of work, has been approved by HNTB-LiRo and environmental specialist.
 - The determination regarding the number and location of all PA 1 dust monitors will be made once that contract is awarded.
- **Background Data:** Changes daily and seasonally due to atmospheric conditions. The most accurate background data is that measured just before the construction shift begins as well as the upwind data measured throughout the day.
- **Community Grant** – The City does not anticipate funding. HNTB-LiRo environmental specialist for CAMP (Community Air Monitoring Program) is onboard.

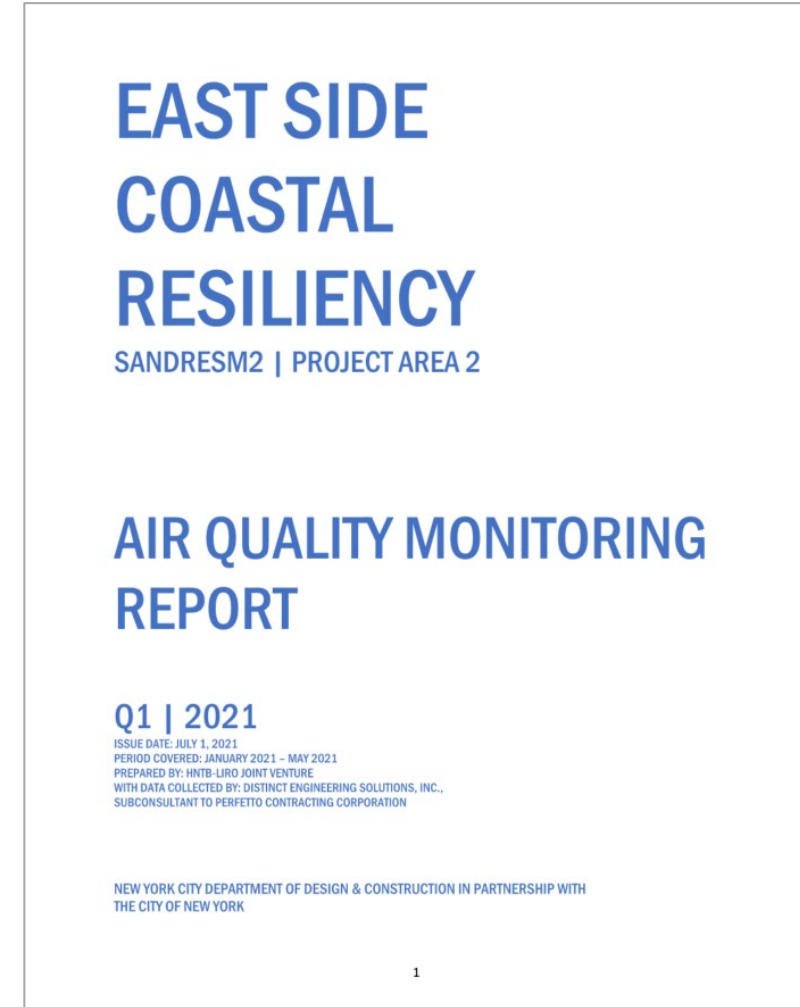
ENVIRONMENTAL MONITORING HIERARCHY UPDATED



QUARTERLY AIR QUALITY MONITORING REPORT

QUARTERLY AIR QUALITY MONITORING REPORT

- First Quarterly will include January – May 2021
- June will be issued as an amendment
- Next Quarterly will be issued fall 2021



QUARTERLY AIR QUALITY MONITORING REPORT

Table of Contents

Part 1

- I. Introduction**
- II. Project Area**
- III. Air Quality Monitoring**
- IV. What is Particulate Matter (PM) and How is it Measured?**
- V. ESCR Air Quality Management Program**

Part 2

- I. ESCR Project Area 2 Phase 1 Construction & Air Quality Monitoring**
- II. Air Quality Monitoring Summary of Data**

QUARTERLY AIR QUALITY MONITORING REPORT | PT 1

What is PM ? As described by the Environmental Protection Agency:

PM stands for particulate matter: the term for a mixture of solid particles and liquid droplets found in the air.

- **PM10:** inhalable particles, with diameters that are generally 10 micrometers and smaller
- **PM2.5:** fine inhalable particles, with diameters that are generally 2.5 micrometers and smaller

Sources of PM:

- These particles come in many sizes and shapes and can be made up of hundreds of different chemicals.
- Some are emitted directly from a source, such as construction sites, unpaved roads, fields, smokestacks, or fires. (typically, PM10)
- Most particles form in the atmosphere as a result of complex reactions of chemicals such as sulfur dioxide and nitrogen oxides, which are pollutants emitted from power plants, industries, and automobiles. (typically, PM2.5)

National Ambient Air Quality Standards (NAAQS) for PM pollution specify a maximum amount of PM to be present in outdoor air.

The table here illustrates the Permissible Exposure Limit (PEL) and Action Levels (AL) for net PM 2.5 and PM10 concentrations over a 24-hour Time Weighted Average (TWA):

	Action Level (AL) over a 24-hour TWA	Permissible Exposure Limit (PEL) over a 24-hour TWA
PM 2.5	25 µg/m3	35µg/m3
PM10	100µg/m3	150µg/m3

QUARTERLY AIR QUALITY MONITORING REPORT | PT 1

Definitions:

Net particulate matter (Net PM) difference between the upwind and downwind monitoring stations

Daily value for PM refers to the 24-hour average concentration of PM calculated or measured from midnight to midnight (local time).

The **Permissible Exposure Limit (PEL)** is a regulatory limit to protect public health/welfare set by the National Ambient Air Quality Standards (NAAQS). **Note: in the line graphs presented in the Appendix, readings are averaged in 15-min intervals and do not represent the standard TWA of 24-hrs*

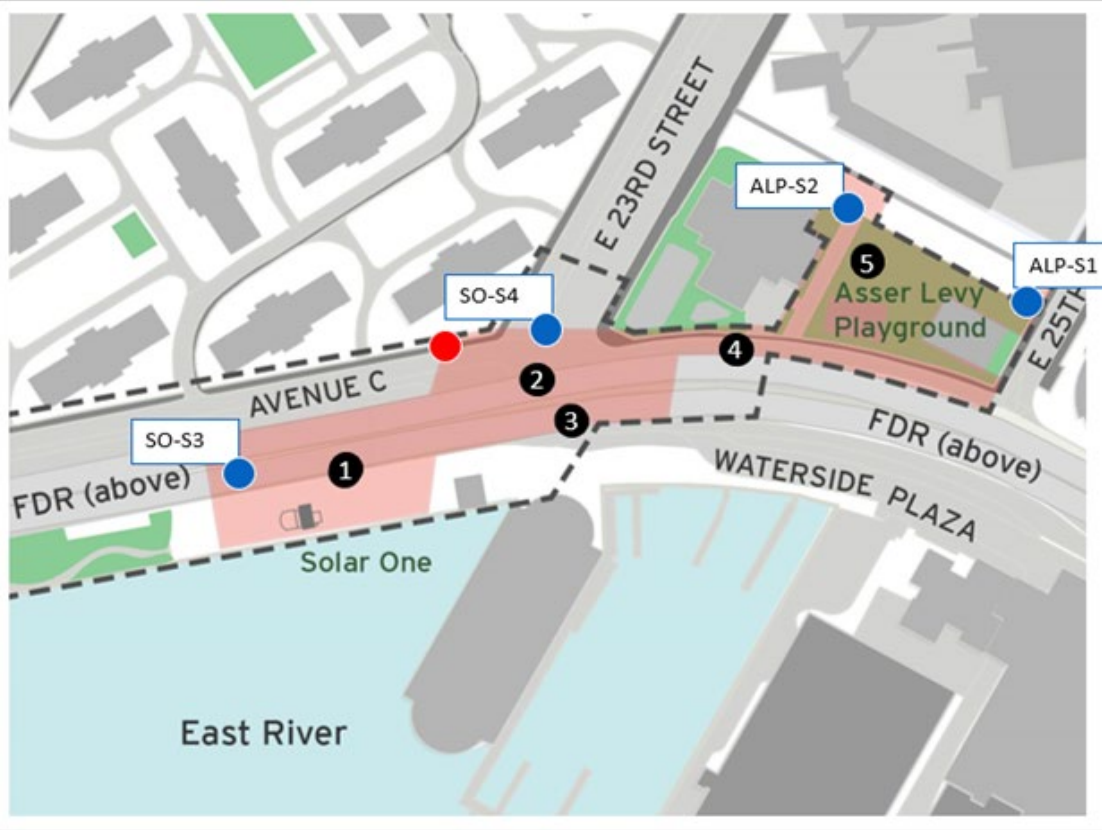
The **Action Level (AL)** is the level set by the ESCR Air Quality Monitoring Plan, lower than the Permissible Exposure Limit (PEL), by where the contractor will be made aware of an increase in particulate matter before reaching the PEL, to begin to implementing mitigation techniques. Automated alerts are dispatched to designated Perfetto and HNTB-LiRo personnel whenever the AL is exceeded.

Exceedance means a daily value that is above the level of the 24-hour standard.

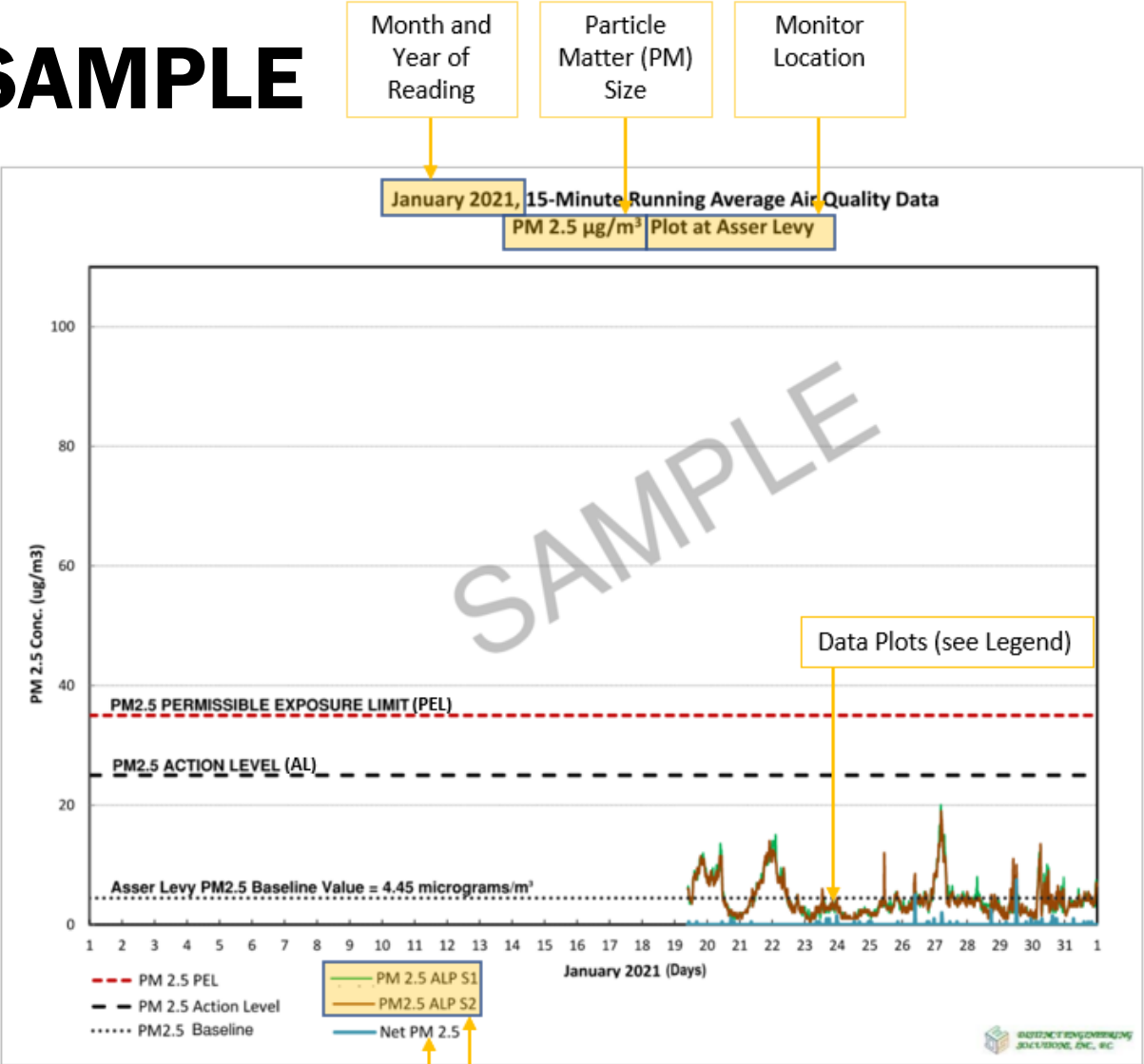
An **exceptional event** is an uncontrollable event caused by natural sources of particulate matter or an event that is not expected to recur at a given location.

An **outlier** is a data point on a graph or in a set of results that is very much bigger or smaller than the next nearest data point.

AQM REPORT | DATA PLOT SAMPLE



Air Quality Monitor Location Map



QUARTERLY AIR QUALITY MONITORING REPORT | PT 1

Management Program:

Community health and safety is of utmost importance to the City of New York, the NYC Department of Design and Construction (DDC), and the East Side Coastal Resiliency Team. The ESCR Team is implementing a multi-level approach to Air Quality Management with includes:

- Step 1: Air Quality Management Plan
- Step 2: Daily Air Quality Mitigation Techniques (Dust control)
- Step 3: Daily Air Quality Monitoring
- Step 4: Air Quality oversight by environmental specialists

QUARTERLY AIR QUALITY MONITORING REPORT | PT 2

Summary of Data:

A. Work Activities

Though air quality is monitored 24/7, typical work hours are as follows during the period of this report:

- Daytime: 7:00 am – 3:30 pm
- Nighttime: 9:30 pm – 5:00 am

B. PM 2.5 and PM 10 Data Summary & Mitigation Measures

For the months of January 2021 – May 2021, construction related Particulate Matter (PM) net 2.5 or 10 levels did not surpass Daily Limits and did not cause air quality concerns to the public or on-site workers. The contractor, PCC, in conjunction with the contractor's environmental specialist, has successfully implemented mitigation techniques to suppress construction activity effects on air quality at Asser Levy Playground and Solar One.

Due to one Air Quality Monitor being placed within a bus stop where buses and snowplows were idling, air quality readings in January, February and March (for one monitor) were above the Permissible Exposure Limit (PEL). Once this monitor was moved, normal readings were measured.

QUARTERLY AIR QUALITY MONITORING REPORT | PT 2

Work Activities and Data Summary & Mitigation Measures

Summary of Data May 2021:

A. Work Activities during this period included:

- **Area 1: North Stuyvesant Cove Park at Solar One (Daytime work)**
 - Installation of piles, site work for flood wall footing, screening of excavated materials
- **Area 2: FDR Dr. West Service Rd. between E23rd & E25th St. (Nighttime work)**
 - Utility relocations, installation of new utilities
- **Area 3: E23rd St. under the FDR Dr. (Daytime work)**
 - Test pits, utility relocation work
- **Area 4: FDR Dr. East Service Rd. at E 23rd St. (Daytime work)**
 - Utility relocations
- **Area 5: Asser Levy Playground (Daytime work)**
 - Installation of piles and utilities

B. Data Summary & Mitigation Measures

There were three occasions where the PM10 readings recorded above the Permissible Exposure Limit at Asser Levy Playground in the month of May. The PM10 readings were below the Permissible Exposure Limit at Solar One.

There were three occasions where the PM2.5 readings were above the Action Level and Permissible Exposure Limit at Asser Levy Playground location for the month of May.

PM 2.5 µg/m3

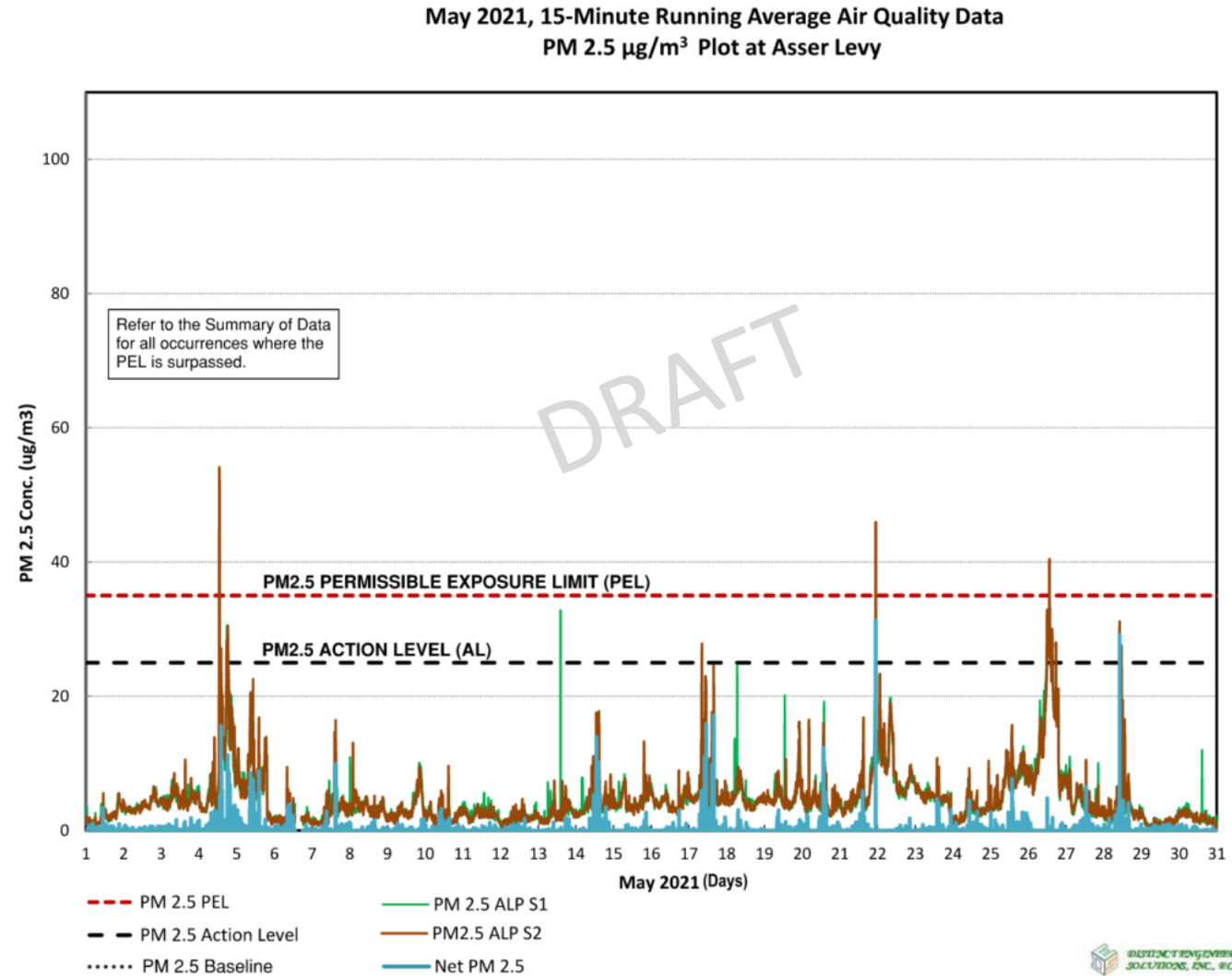
- **Asser Levy Playground (ALP):** The No. Permissible Exposure Limit (PEL) was surpassed on three, 15-minute occurrences for PM 2.5 and quickly mitigated. On no day was the 24-hour Time Weighted Average (TWA) or Daily Value in exceedance:
 1. On 5/4/21, PM levels increased due to water main excavation activities at Asser Levy Playground.
 2. On 5/21/21, construction vehicles idling in relatively close proximity to the monitoring stations caused a spike in PM levels.
 3. On 5/26/21, construction operations in the park consisting of screening excavated material (separating large construction debris from excavated soil) caused a brief increase in PM levels.
- **Solar One (SO):** PM 2.5 µg/m3 levels remained under the Permissible Exposure Limit (PEL).

Mitigation Action

- For items 1 and 3 mentioned above PCC monitored conditions upon receipt of the first alert and implemented dust mitigation activities (spraying/wet misting). There are no public or worker air quality concerns and the 24-hour Time Weighted Average (TWA) or Daily Value was not in exceedance.
- For item 2, note that the contractor has been instructed to minimize idling time of trucks to cut down exhaustion.

QUARTERLY AIR QUALITY MONITORING REPORT | PT 2

- Data Plot PM 2.5
Asser Levy Playground



CAG LETTER 2 SOILS

CAG LETTER 2 SOILS

“Access to public recreational facilities and areas undergoing construction for the proposed ESCR Project should be restricted to the public to ensure all necessary safety protocols are adequately met.”

- Currently the case with Project Area 2
- Public is restricted from construction areas
- Adjacent areas are open, and should an unsafe condition present itself, an area may be temporarily closed in coordination with partnering agencies, with advanced notice to the public and reopened once safe again.

CAG LETTER 2 SOILS

The community's health concerns are the top priority of the NYCDDC and ESCR Project Team.

Though previous sampling was performed, and contamination areas were mapped, the plans and protocol, as well as the multi-tiered oversight of environmental specialists and agencies, apply throughout the project area.

The plans lay out the procedure for the contractor to follow should contaminated soils be located, and the JV (HNTB-LiRo) has (for PA2) and will (for PA1) verify that the contractor has all necessary equipment and materials as required onsite to properly respond to contaminations encountered.

Dewatering for the project, will be conducted in accordance with a New York City Department of Environmental Protection (NYCDEP) sewer discharge permit and? New York State Department of Environmental Conservation (NYSDEC) State Pollutant Discharge Elimination System (SPDES) discharge permit to the East River. The SWPPP has been approved for Project Area 2.

There is not a separate risk assessment being commissioned. Per the contract, the team shall follow all applicable Local, State and Federal Guidelines.

CAG LETTER 2 SOILS

Fill excavation:

- For PA1, the existing fill is not being removed in bulk, rather large volumes of fill are being imported to raise the park grade and the majority of the existing fill will remain.
- For Project Area 2 (PA 2), excavation is also minimal. Most excavation is for utility work. Minimal amounts of fill will be brought in for utility trenching backfill and the small berms at Stuyvesant Cove Park.
- Excavated material deemed unacceptable for reuse will be removed as noted. Where it is found to be acceptable or can be reprocessed it will be reused.
- Unacceptable materials is not necessarily due to contaminants, it may be due to too much organic matter, large rocks, stone and concrete.
- excavated material determined to be unsuitable for fill may be processed (i.e. screened and/or crushed) to produce select granular fill material or fill material. Such processed materials for backfill must be in compliance with the material specifications for either Select Granular Fill or for Fill, as required.
- Material may not be **reused on-site** without prior approval by the HNTB-LiRo Joint Venture (JV), and sampling to determine if the material is suitable for reuse in consultation with NYCDEP and/or NYSDEC.

CAG LETTER 2 SOILS

Fill material:

Unless otherwise approved by HNTB-LiRo, the Contractor shall import only fill material that meets one of the following environmental criteria.

1. Virgin quarried material
 2. NYSDOT-spec Recycled concrete aggregate (RCA), from facilities permitted or registered by NYSDEC.
 3. Material from a facility that possesses a current Beneficial Use Determination (BUD) from the NYSDEC that includes testing as required by the spec.
 4. Material from any other site where testing results performed by the Engineer demonstrate that the material meets the lower of the Restricted Residential and Groundwater Protection SCOs set forth in NYSDEC 6 NYCRR Part 375 in accordance with procedures as per the spec.
 5. Material from the New York City Office of Environmental Remediation Clean Soil Bank.
- Glass from recycling facilities that meets the requirements for Glass as approved by the Engineer.
 - Fill and Backfill, as specified above may be used up to 3 ft from finished grade or the bottom of the horticultural fill layer, where specified on the Contract Drawings. The upper 3 ft of fill material (below the finished grade or horticultural fill layer) shall meet the requirements of the Select Granular Fill.
 - Select Granular Fill shall be a natural, well graded sand and crushed stone or approved clean earth of low silt and clay content, free from bricks, blocks, excavated pavement materials and debris, stumps, roots and other organic matter, as well as ashes, oil and other perishable or foreign material.

CAG LETTER 2 SOILS

Public Health:

- Air Quality monitoring is in effect 24 hours a day 7 days a week to protect the construction workers and the community.
- The oversight for environmental monitoring for the East Side Coastal Resiliency (ESCR) project is **multi-tiered** and includes relationships between several agencies and entities.
- The contractor, contractor's environmental specialist, HNTB-LiRo's construction environmental specialist and the HNTB-LiRo Construction Manager receive an alert at an **Action Level set under the prescribed Permissible Levels**.
- At the time of the Action Level alert, **work activities will be evaluated, and mitigation measures employed to prevent the air monitor readings from escalating.**
- Mitigation measures for dust management have been presented in past meetings.
- Protocols for contaminated materials.
- Following all local, state federal guidelines to maintain health and safety of public as required by the contract.

CAG LETTER 2 OTHER ITEMS

Bid documents:

- It is protocol for DDC design team to submit the Mass Mailing documents to the local Community Boards for input. You may file a Freedom of Information Law (FOIL) request for additional information on the bid process.

Sewer Work:

- There is additional sewer work in SANDRESM1 (Project Area 1) and SANDRESM2 (Project Areas 2); Parallel Conveyance (SANDRESPC) is not the entire budget for all ESCR related sewer work.
- For SANDRESM1, SANDRESM2, and SANDRESPC there is a total of \$266 Million allocated for sewer related work.
- Regarding SANDRESPC, the City's adopted budget plan allocated \$75 Million for the project including sewer work.

SECTION 3

MWBE

SECTION 3 / MWBE

The screenshot displays a virtual information session interface for ESCR Section 3 & M/WBE. The interface is divided into three main sections:

- Left Sidebar:** Contains "SECTION 3 DEFINITIONS" and "Section 3 Individuals" with bullet points defining eligibility criteria. It also lists "Section 3 Business Concerns" with numbered criteria (1. 51% or more owned by Section 3 Residents, 2. Substantially employs (30% or more) Section 3 residents, 3. Commitment to issue over 25% of subcontracts to an eligible Section 3 Business Concern). The NYC DOC logo is at the bottom.
- Central Content Area:** Features the "NYC Housing Authority" header and navigation tabs (About, Residents, Eligibility, Section 3, Business, Submit Concern, Search). Below these are buttons for "Vendors", "Filing & Photo", and "Services". The main heading is "Section 3 Business Concern Information", with links for "Supplier/Vendor Registration/Login" and "Minority & Women-Owned Small Business". It includes a "List of Section 3 Business Concerns" and a "Search for a HUD Section 3 Business" section with a search bar and filters.
- Right Sidebar:** Shows "28 active stakeholders" and "Connection Status: [Green Dot]". The title is "ESCR Section 3 & M/WBE Virtual Information Session Spring 2021". It describes the ESCR Project as a coastal protection initiative. Below is a "Project Documents" link and a "Thank you for joining us this morning. The podium will open for comments towards the end of the presentation." message with a "Join the Podium" button. At the bottom, it states: "When enabled, click Join the Podium to submit a question or comment to the project team. Your virtual podium comment will be entered into the official project record, may be read aloud or displayed on screen, and will be responded to either live or post-event by the project team. The podium is only active when the moderator activates it."

- July 28, 2021: Quarterly ESCR Section 3 and MWBE Information Session
- Upcoming Survey

WHAT WE'VE HEARD

- **Funding:** Mayor's Office announced funding for amphitheater cover, flyover bridge, and Murphy Brother's comfort station
- **Next Steps for funded items:** ESCR City Team will have more information at subsequent meetings
- **Homeless:** PA2 encampment has been relocated

Mayor de Blasio Announces Funding for Amphitheater, Public Restrooms, Greenway Bridge in Ambitious East Side Coastal Resiliency Project

June 10, 2021

NEW YORK—Mayor Bill de Blasio today announced almost \$140 million in new City funding to add more community amenities as part of East Side Coastal Resiliency (ESCR), the world-leading effort to protect Manhattan's east side from the worst effects of climate change. The funding will support new public restrooms, a new amphitheater, and in a separate capital project, a \$129 million flyover bridge to elevate the Manhattan Greenway over its narrowest point along the East River.

<https://www1.nyc.gov/office-of-the-mayor/news/422-21/mayor-de-blasio-funding-amphitheater-public-restrooms-greenway-bridge-ambitious>