

COMMUNITY ADVISORY GROUP (CAG)

Meeting #5

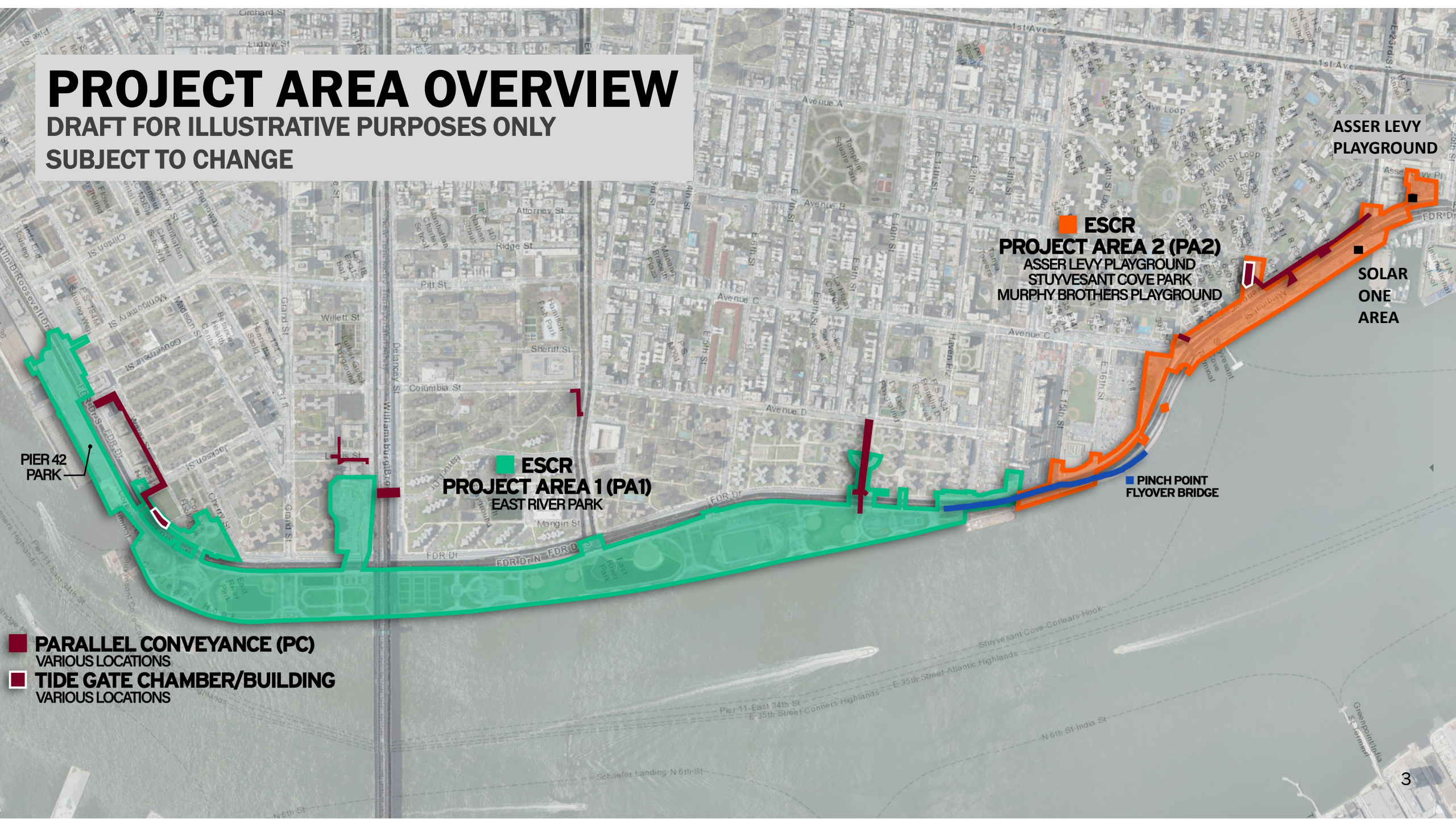
HIGHLIGHTS

- **Pre-construction and Construction Phase Updates**
 - **Bicycle & Pedestrian Access**
 - **Communications & Signage**
- **Construction Mitigation / Environmental Monitoring**
- **What We've Heard**
 - **Compost**
 - **Emergency Access**
 - **Section 3 M/WBE**

PROJECT AREA OVERVIEW

DRAFT FOR ILLUSTRATIVE PURPOSES ONLY

SUBJECT TO CHANGE



ASSER LEVY
PLAYGROUND

ESCR

PROJECT AREA 2 (PA2)
ASSER LEVY PLAYGROUND
STUYVESANT COVE PARK
MURPHY BROTHERS PLAYGROUND

SOLAR
ONE
AREA

PIER 42
PARK

ESCR
PROJECT AREA 1 (PA1)
EAST RIVER PARK

PINCH POINT
FLYOVER BRIDGE

PARALLEL CONVEYANCE (PC)
VARIOUS LOCATIONS
TIDE GATE CHAMBER/BUILDING
VARIOUS LOCATIONS

OVERVIEW OF CONTRACTS

Project Area 1 (PA1)

- bid opening extended to address questions from construction industry
- marginal impact to overall timeline
- East River Park open through Spring 2021

Project Area 2 (PA2)

- received NTP November 16, 2020
- in mobilization and site-prep phase

Parallel Conveyance (PC)

- bid opening early 2021
- open bid – no prequal list
- CCL onboard mid 2021

PA2 : ANTICIPATED ACTIVITIES

COMPLETED

- Asser Levy construction fencing
- Construction signage at Asser Levy & Solar One

IN PROGRESS

- Submittal Review: Environmental, Construction Plans, Noise & Air
- Solar One construction fencing
- Greenway rerouting signage
- Continue test pits & demolition activities
- Air & Noise Monitoring equipment installation

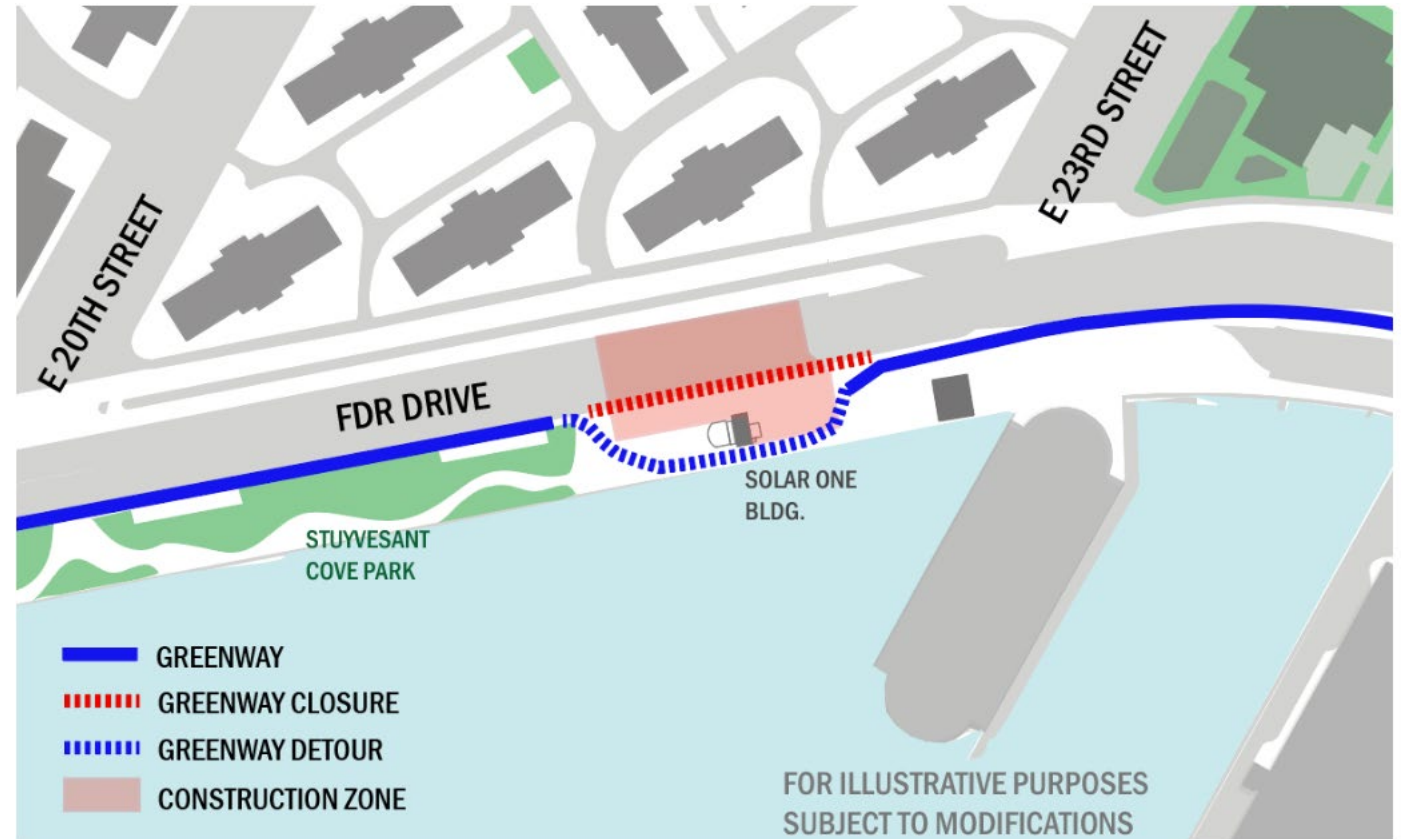
UPCOMING

- Engineers Field Office
- Ongoing site amenity removals and tree removals at Asser Levy Playground
- Install rodent bait stations at various locations



PA2: PEDESTRIAN & BICYCLE ACCESS

- Greenway detours at Solar One will occur adjacent to the waterfront starting immediately
- This detour will remain in place for several weeks until construction activities at Solar One prohibit safe pedestrian access
- Future detours are actively being coordinated with DOT
- Detour is subject to change once Project Area 1 begins and other phases of Project Area 2
- Detours will be communicated in advance of closures
- Avenue C Detour under FDR Drive from 18th to 20th Street is under ongoing coordination with DOT and the contractor



COMMUNICATIONS

- site signage

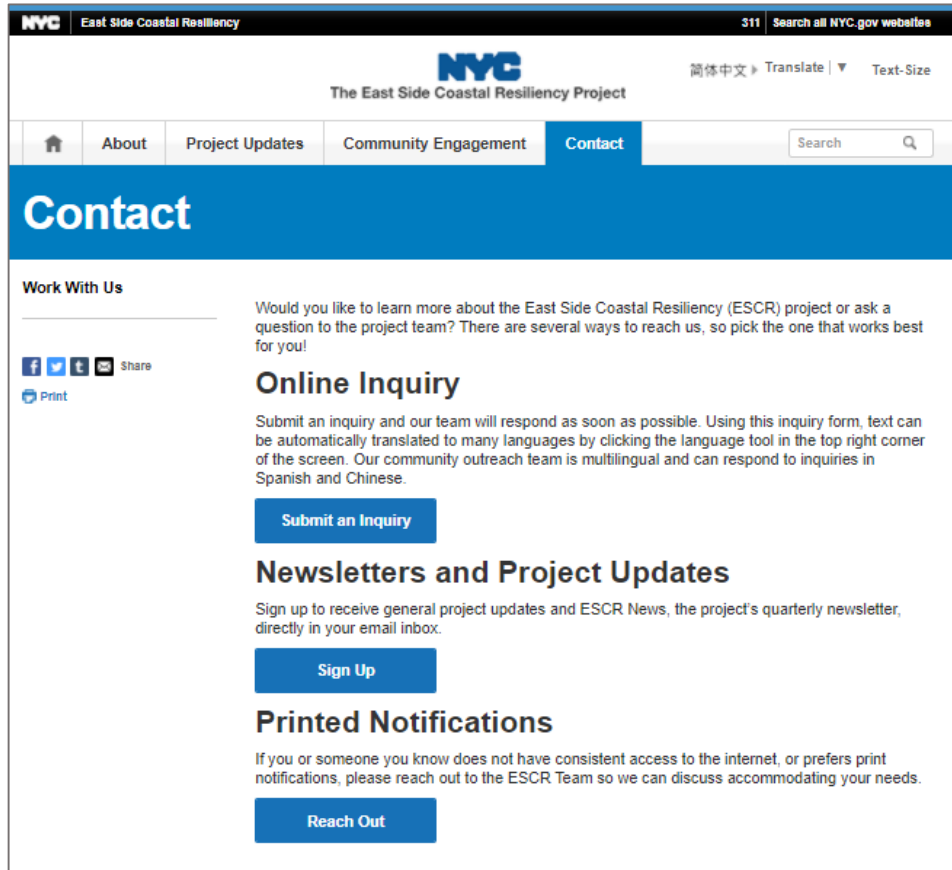


- Typical DOT signage for shared use zones



COMMUNICATIONS

- updated website contact page
- current advisory on Greenway detour



Community Advisory

East Side Coastal Resiliency
www.nyc.gov/escr

EAST SIDE COASTAL RESILIENCY

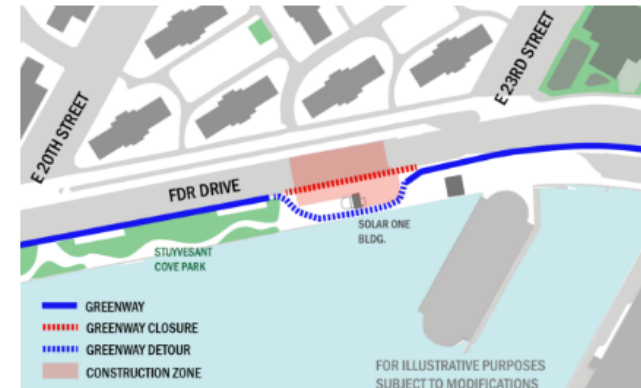
Project # SANDRESM2 | Borough: Manhattan | Issue Date: 1/05/2021

The East Side Coastal Resiliency Project is an initiative to provide long-term flood protection on the Lower East Side.

East River Greenway Detour: Between E 20th & E 23rd Street

Starting the week of January 4, 2021

Flood wall construction operations adjacent to the Solar One facility will necessitate the following Greenway detour, 24 hours/day, 7 days/week. Adhere to posted Shared Zone signage.



If you have questions, or would like to learn more about the East Side Coastal Resiliency Project, please contact your Community Construction Liaison (CCL):

Nadine Harris

Phone: 347-572-3057 Email: ESCRCCL2@ddccr.com

Inquiry Tool: www.nyc.gov/escr/contact

PLEASE NOTE: Due to unforeseen conditions (weather, field conditions, etc.) it may become necessary to change some scheduled work locations and operations.



CONSTRUCTION MITIGATION & ENVIRONMENTAL MONITORING

CONSTRUCTION PLANS

- **Construction Health and Safety Plan (CHASP):**
 - construction worker site safety, personal protective equipment, emergency response procedures, etc.
 - incorporates required COVID rules and guidelines
- **Noise and Air Quality Monitoring Plan:**
 - Construction Noise & Air Monitoring Plan in compliance with the NYC Noise Control Code and Air Quality Laws & National Ambient Air Quality Standards
 - Sets monitoring locations, reporting, thresholds for exceedances, maintenance protocols
 - **Dust Control Plan:**
 - in compliance with NYC Codes and DEPs Construction Dust Rules to mitigate the release of dust from the construction site, use of best available control technologies (i.e., diesel particulate filters, newer equipment, ultra-low sulfur diesel), minimize diesel particulate emissions, watering plan
- **Vibration Control:**
 - Vibration Monitoring will be implemented during construction to ensure that the vibration produced by construction activities are within safe limits to nearby structures
- **Soil:**
 - Soil mitigation during construction will be implemented in accordance with a project Remedial Action Plan (RAP), which will be approved by DEP

CONSTRUCTION MITIGATION | AIR

dust reduction strategies:

- Dust Control Plan and Implement construction-related dust reduction measures required by DEP's Construction Dust Rules
 - Ultra-Low Sulfur Diesel (ULSD) fuel
 - Best Available Technology for reducing diesel particulate emissions for non-road diesel engines
 - Use of diesel engines must be minimized
 - Truck idle time must be restricted to three minutes
 - Maximize use of barging for deliveries
 - Trucks hauling loose material must be equipped with tight-fitting tailgates and their loads securely covered
 - Water sprays must be used for all excavation and transfer of soils
 - Loose materials (e.g., on-site storage piles) must be watered or covered
 - Control via wet down areas

monitoring:

- Monitors will move based on location of construction
- Airborne Dust
- Meteorological data – pressure, humidity, precipitation, wind direction, temperature, etc.
- Limits set by EPA and National Ambient Air Quality Standards

CONSTRUCTION MITIGATION | NOISE

noise reduction strategies:

- Replace diesel/gas powered equipment as early as possible with electric equipment
- Equipment must be properly maintained
- Impact cushion required for piles driven by impact hammer
- Pile installation, where feasible and practicable, limited to between 7 AM and 6 PM.
- Maximize use of barging for deliveries of construction materials/fill rather than trucks
- Selecting quieter models for cranes, generators, compressors and lifts subject to availability
- Minimize truck back-ups
- Trucks cannot idle more than 3 minutes

monitoring:

- to determine whether construction-generated noise levels do/do not exceed the applicable limits
- Must meet sound standards specified in NYC Noise Control Code

CONSTRUCTION MITIGATION | SOILS/EXCAVATION

- Procedures in place:
 - Soil Core Sampling to depth of excavation to determine use and disposal
 - On-site inspectors and environmental specialists from contractor and PMCM
- Material Handling Plan (MHP) prior to excavation
 - Inconsistencies in soil sampling will initiate procedures
- Soil mitigation during construction will be implemented in accordance with a project Remedial Action Plan (RAP), which will be approved by DEP

CONSTRUCTION MITIGATION | MONITORING

obligations

- Noise and air quality commitments/mitigation made in FEIS and Record of Decision issued for ESCR
- **monitoring plans:** approved by NYC DDC & PMCM
- **independent environmental consultants:**
 - Contractor must retain an independent environmental consultant to obtain permits and perform soil and water sampling
 - PMCM oversight of construction activities by on-site inspectors and environmental specialist
- **alerts:** air quality and vibration alerts sent automatically if thresholds are exceeded to contractor, PMCM, environmental specialists
- **investigation & mitigation:** work will halt upon exceedance for investigation and mitigation actions

reporting

- DDC will report exceedances/findings to the public after investigation as typical for DDC projects
- At minimum **quarterly summary reports:** coordination ongoing with contractor's environmental specialist

WHAT WE'VE HEARD

- **Compost relocation:** DSNY update
- **Emergency access:** coordination with FDNY, NYPD, etc. ongoing from design phase into the construction phase including FDNY site meetings to review changes roadway access
- **Construction staging & equipment**
- **On-site bulletins:** under review
- **Section 3 and M/WBE:** coordination with Bui Studios and DDC Office of Diversity and Industry Relations (ODIR) ongoing. This includes both outreach and monitoring. Planning smaller outreach events for 2021.
- **Pier 42:** current work within East River Park is related to the EDC Pier 42 project, ESCR work has not begun within East River Park