

East Side Coastal Resiliency

Friends of Corlears Hook Park
Design Update

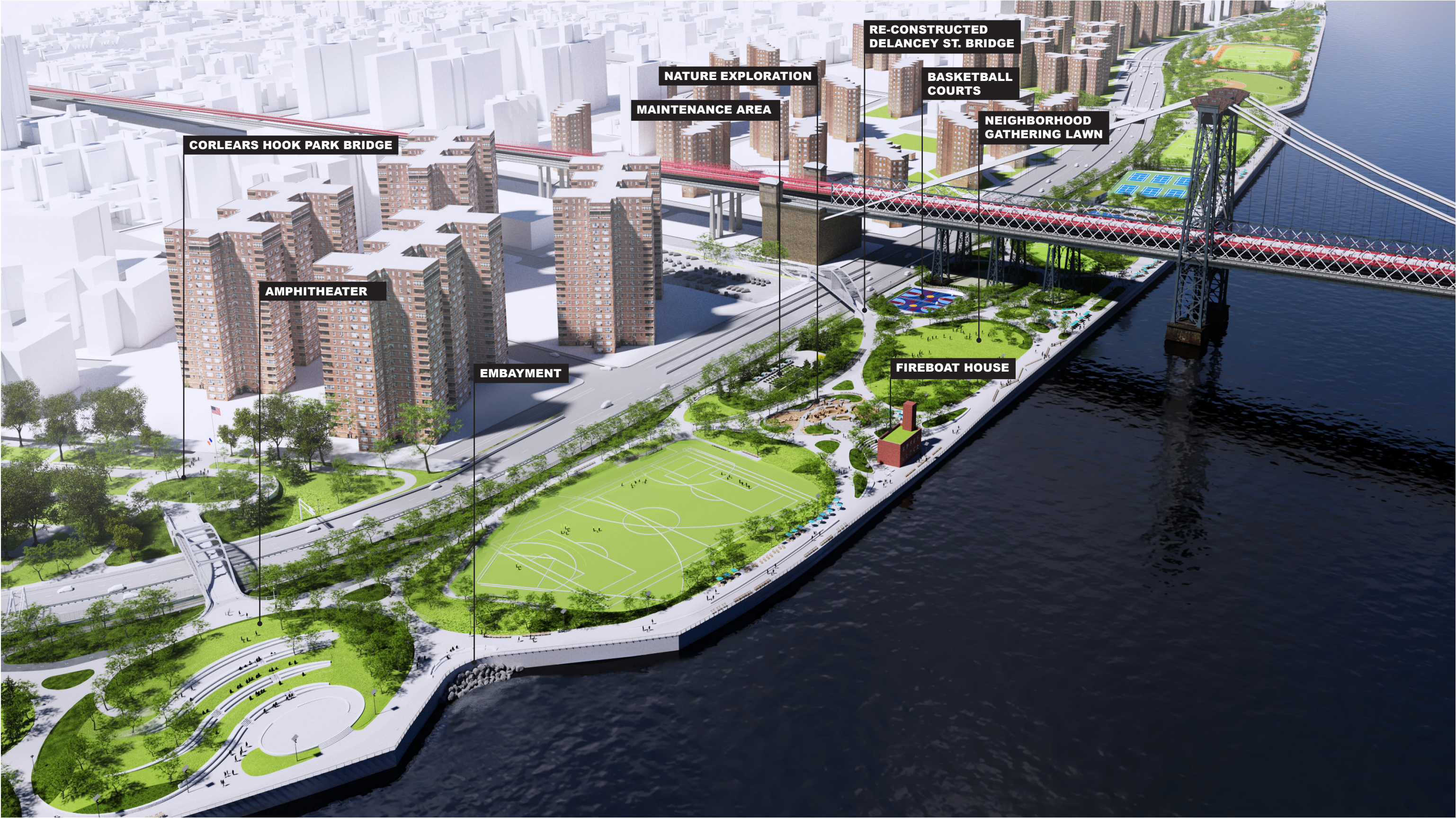
Grand Street Settlement (80 Pitt Street)

January 14, 2020



CORLEARS HOOK PARK

PROPOSED PARK CONTEXT



CORLEARS HOOK PARK

QUESTIONS FROM THE COMMUNITY

PARK RESOURCES

- Will there be water and electrical hook-ups for the FoCHP?
- How many trees will be impacted?
- What is the timeline for the Comfort Station and Dog Park upgrade projects?
- What new security measures are being provided?
- What will happen to the flag pole?

INTERCEPTOR GATE HOUSE

- What is the area of impact for constructing the Interceptor Gate House?
- Is the Interceptor Gate House part of Corlears Hook Park?
- Will there be a green roof on the building?
- Will there be storage space for the community?

PARALLEL CONVEYANCE

- What is the extent of trenching for the Parallel Conveyance?
- Will construction impact the sports field, including the existing chain link fence?

DESIGN DIRECTION

- Where are there opportunities to create more usable space in Corlears Hook Park?
- What are the planting and grading restrictions in Corlears Hook Park?
- How can we improve the approach to Corlears Hook Bridge?
- How can we preserve views of the water as you approach East River Park?

CORLEARS HOOK BRIDGE

FDR VIEW



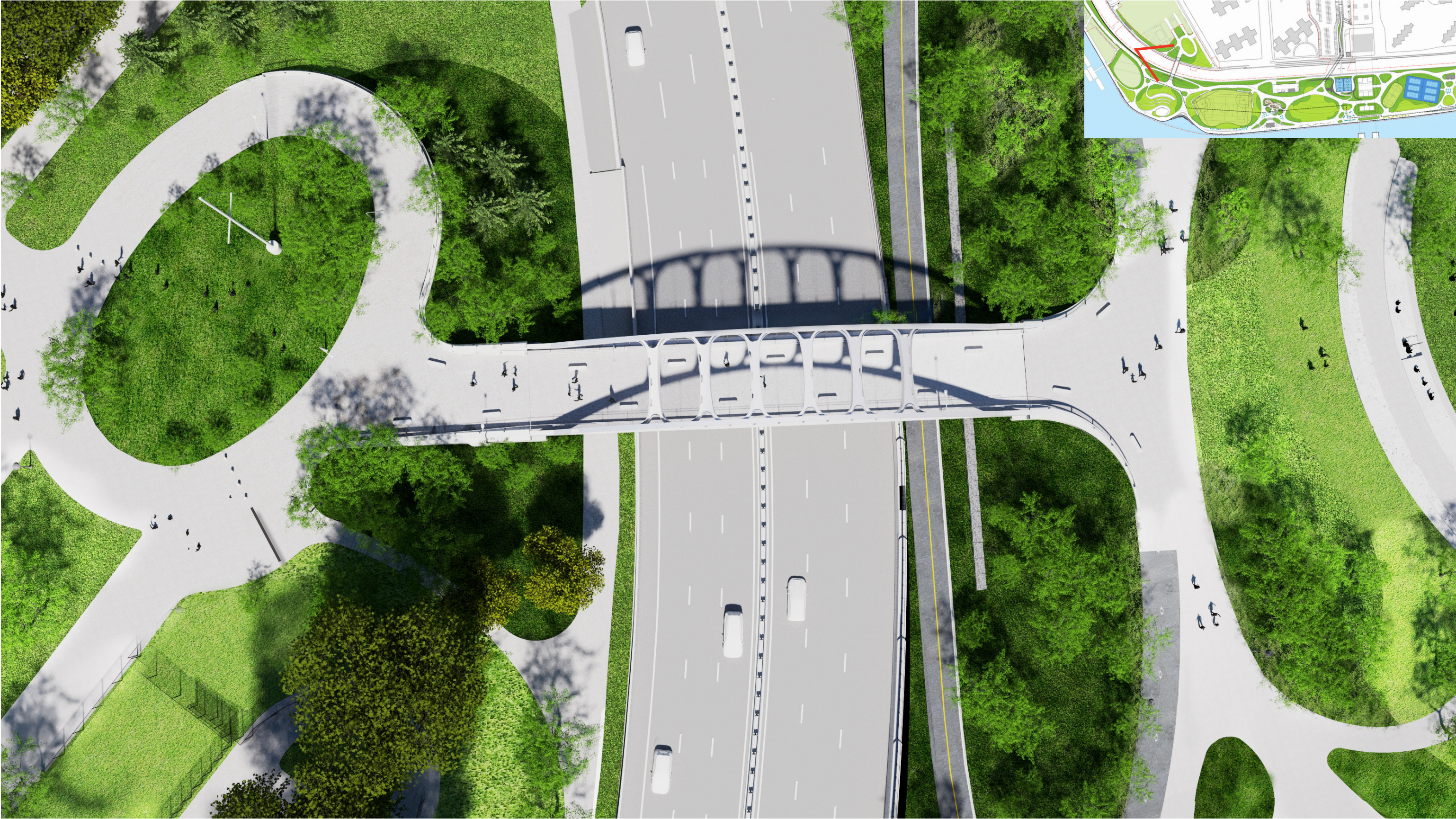
CORLEARS HOOK BRIDGE

ON-BRIDGE VIEW



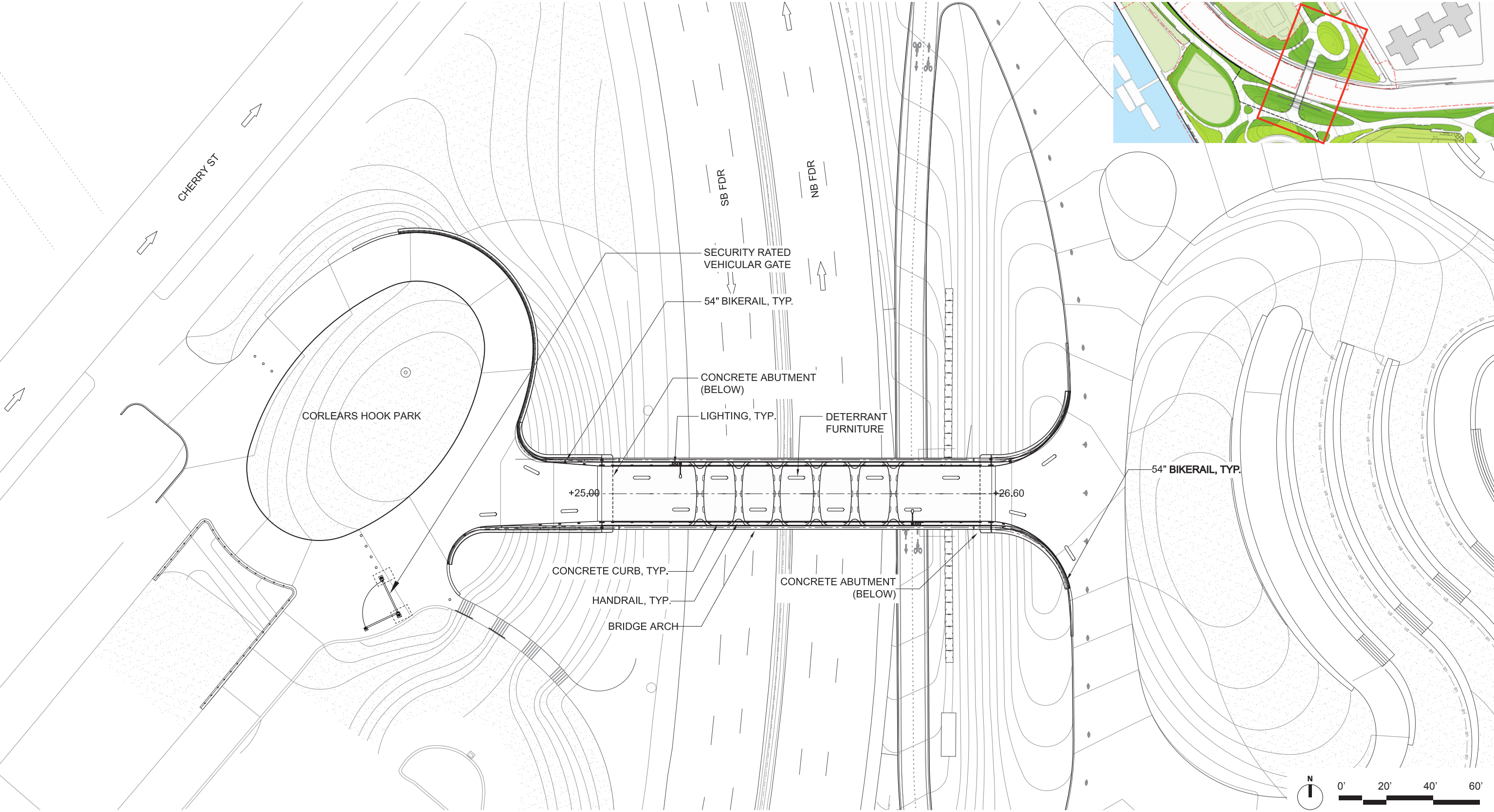
CORLEARS HOOK BRIDGE

AERIAL RENDERING



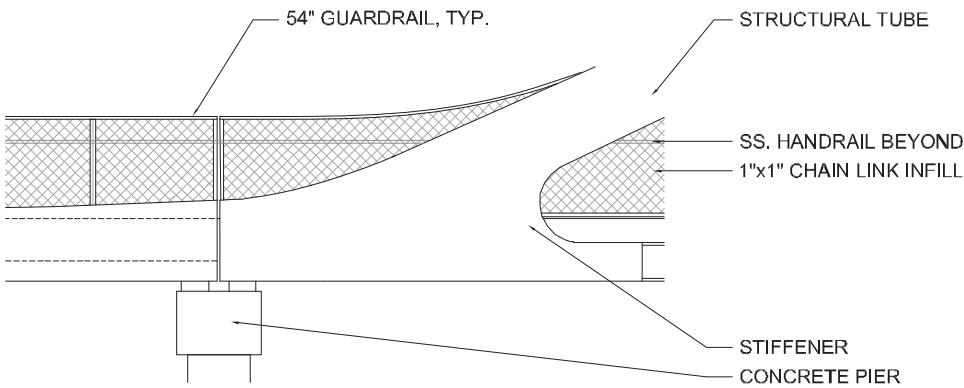
CORLEARS HOOK BRIDGE

ENLARGEMENT PLAN

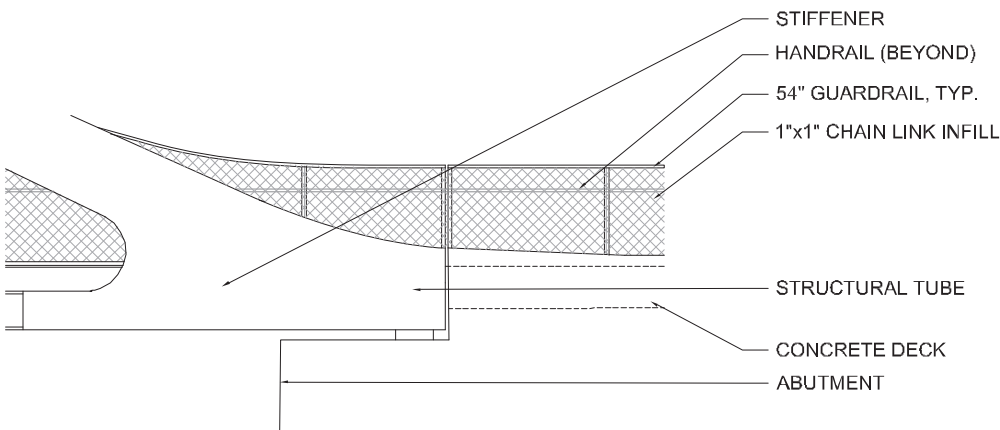


CORLEARS HOOK BRIDGE

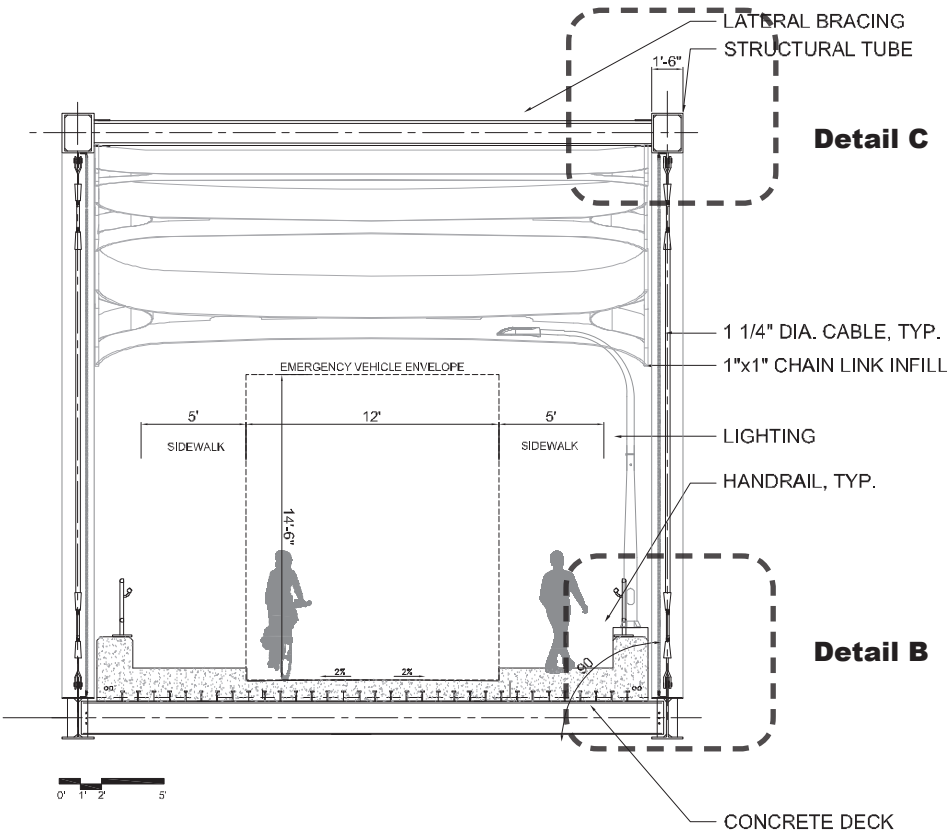
SECTION AND ELEVATION



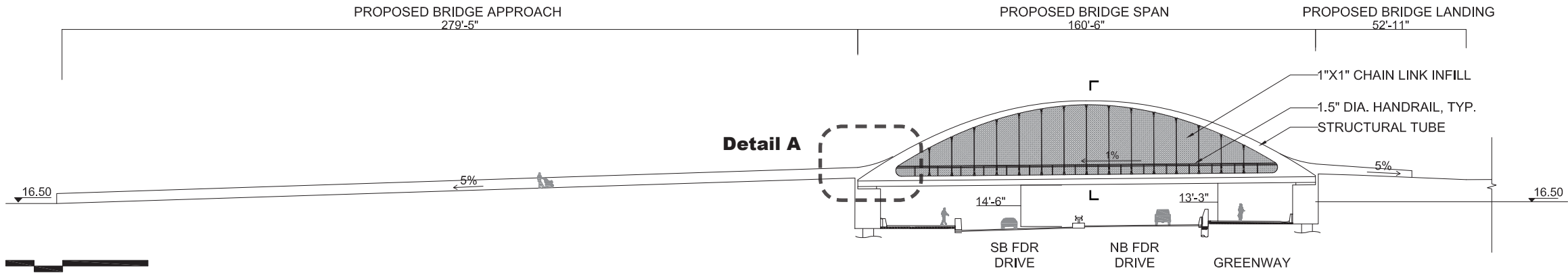
Transition Detail - Bridge to Concrete Pier



Transition Detail - Bridge to Abutment

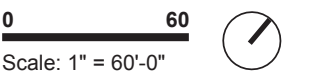


Section Through Bridge Arch



Bridge Elevation

EXISTING CONDITIONS



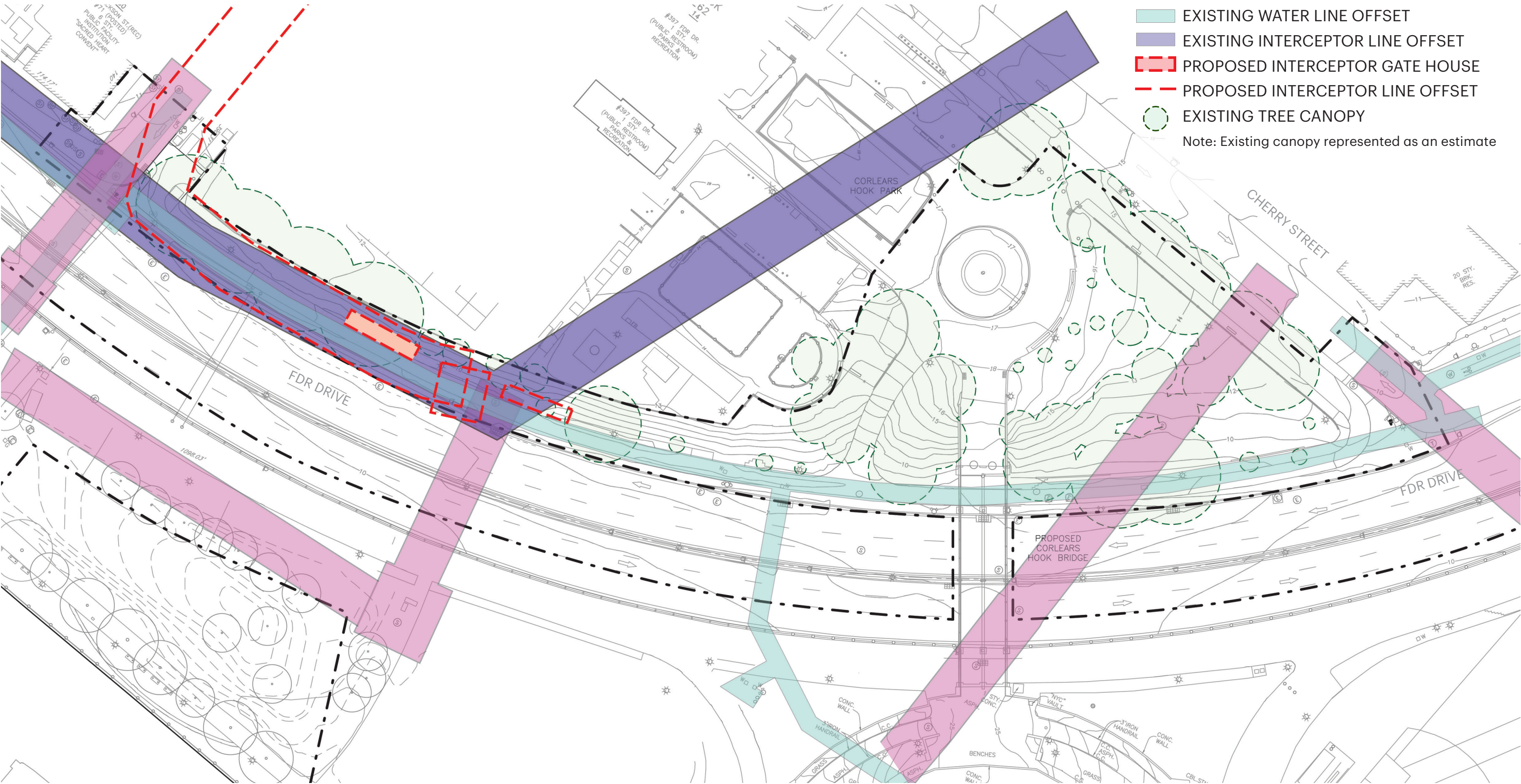
NYC PARKS PROJECTS

UPGRADES FOR CORLEARS HOOK PARK DOG RUN



UTILITIES ON SITE

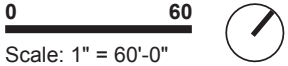
PLANTING OFFSETS



LEGEND

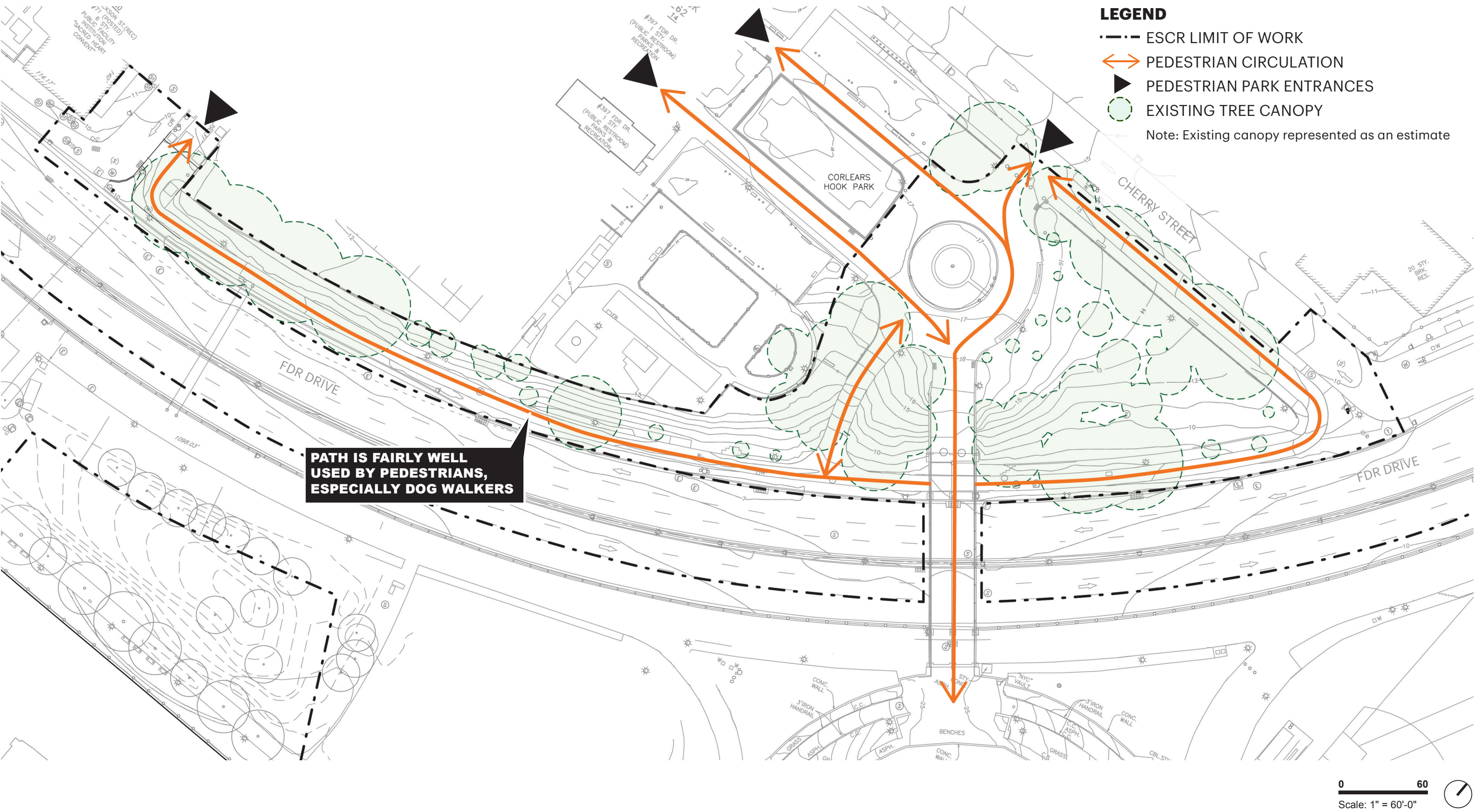
- ESCR LIMIT OF WORK
- EXISTING SEWER LINE OFFSET
- EXISTING WATER LINE OFFSET
- EXISTING INTERCEPTOR LINE OFFSET
- PROPOSED INTERCEPTOR GATE HOUSE
- PROPOSED INTERCEPTOR LINE OFFSET
- EXISTING TREE CANOPY

Note: Existing canopy represented as an estimate



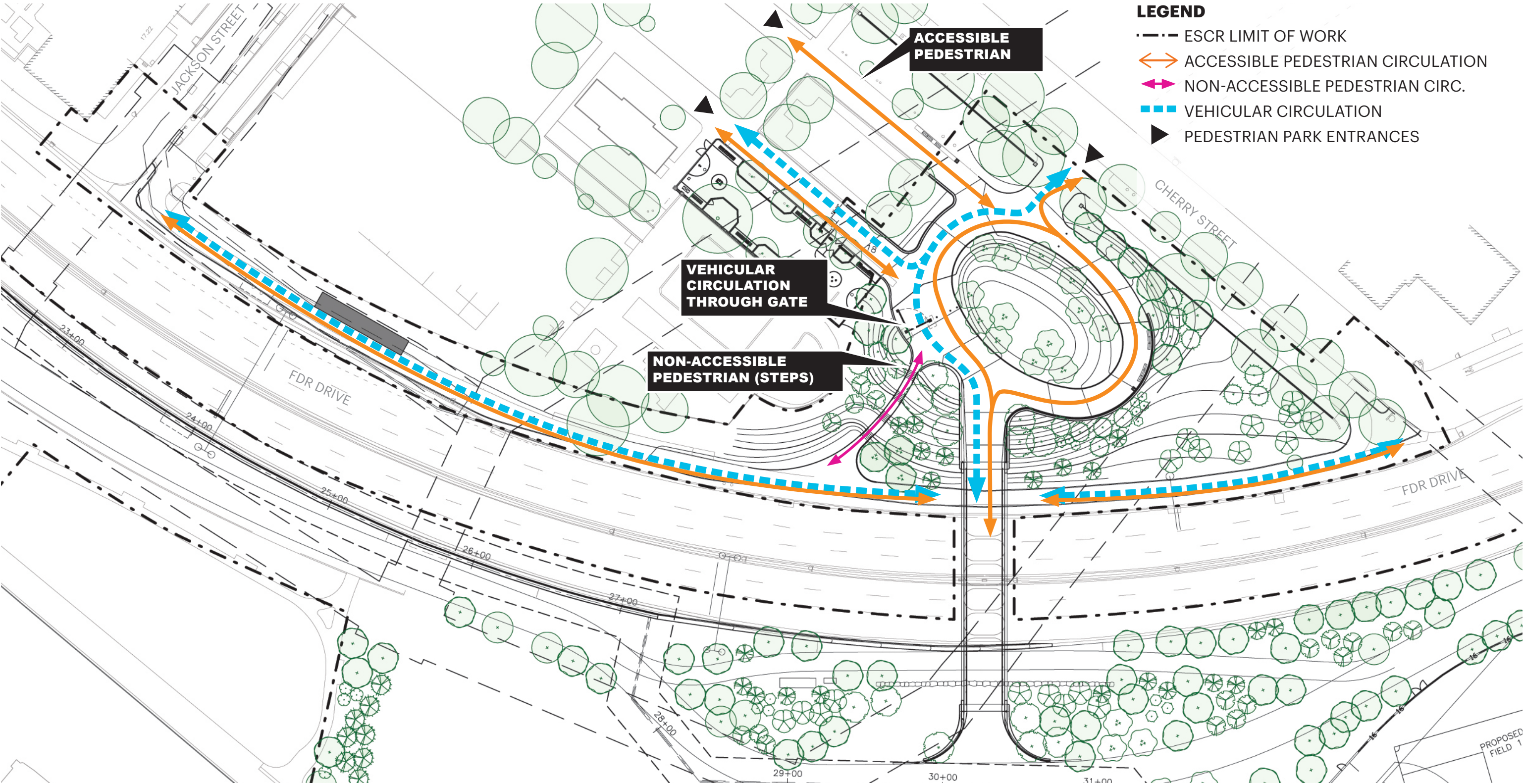
EXISTING CONDITION

CORLEARS HOOK PARK CIRCULATION

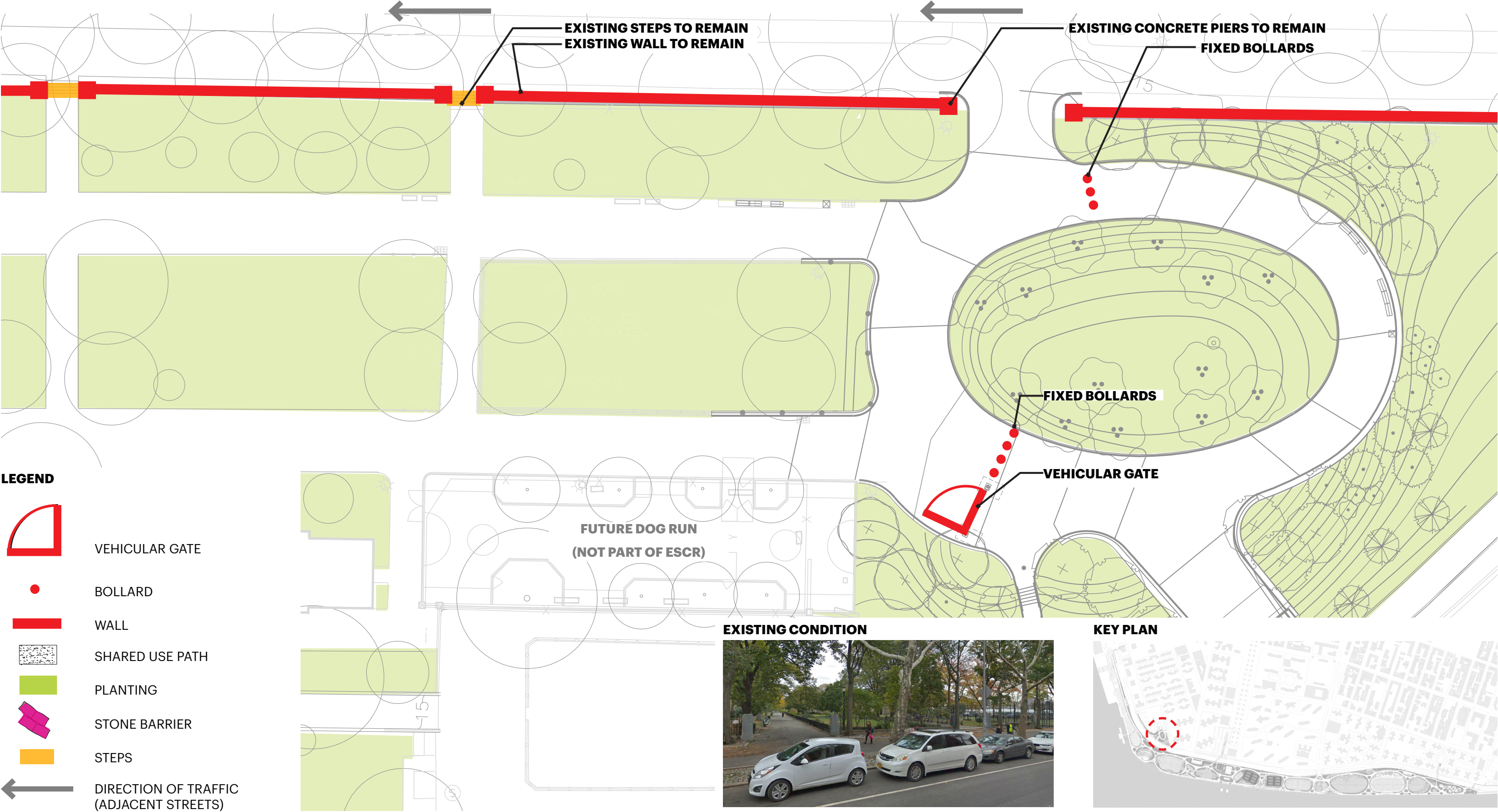


PROPOSED CONDITION

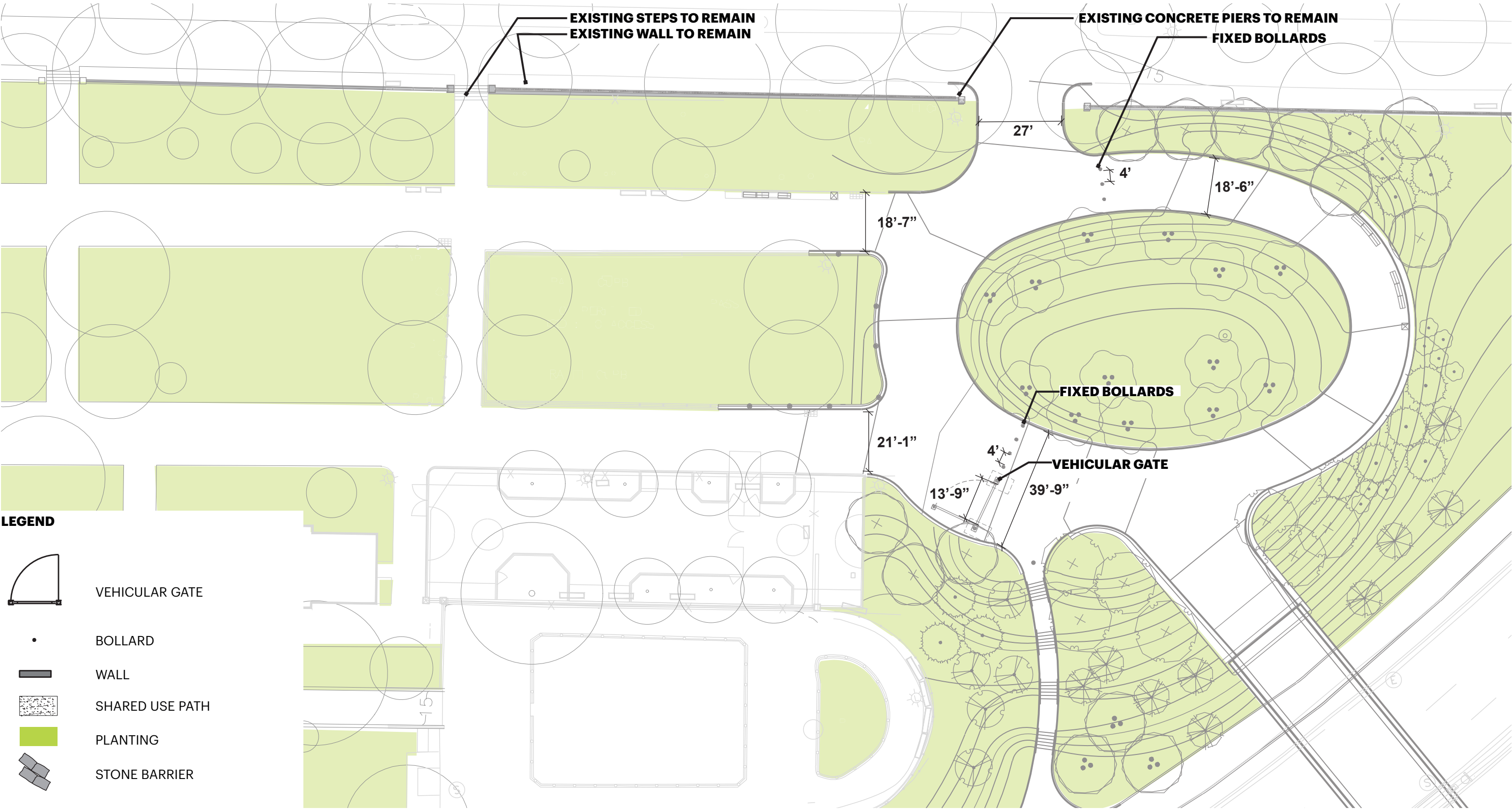
CORLEARS HOOK PARK CIRCULATION



SECURITY MEASURES



SECURITY MEASURES



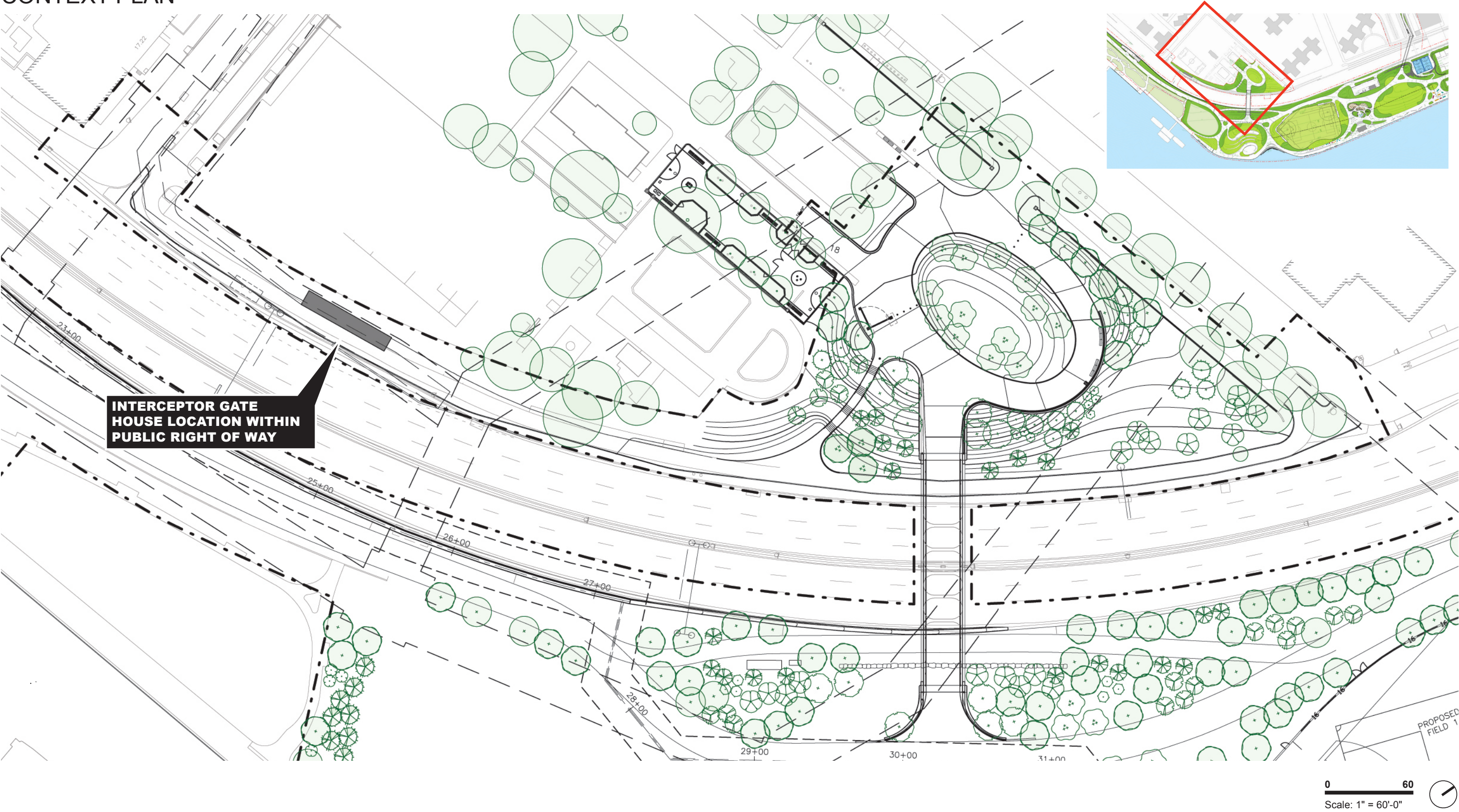
INTERCEPTOR GATE HOUSE

VIEW FROM SOUTHWEST



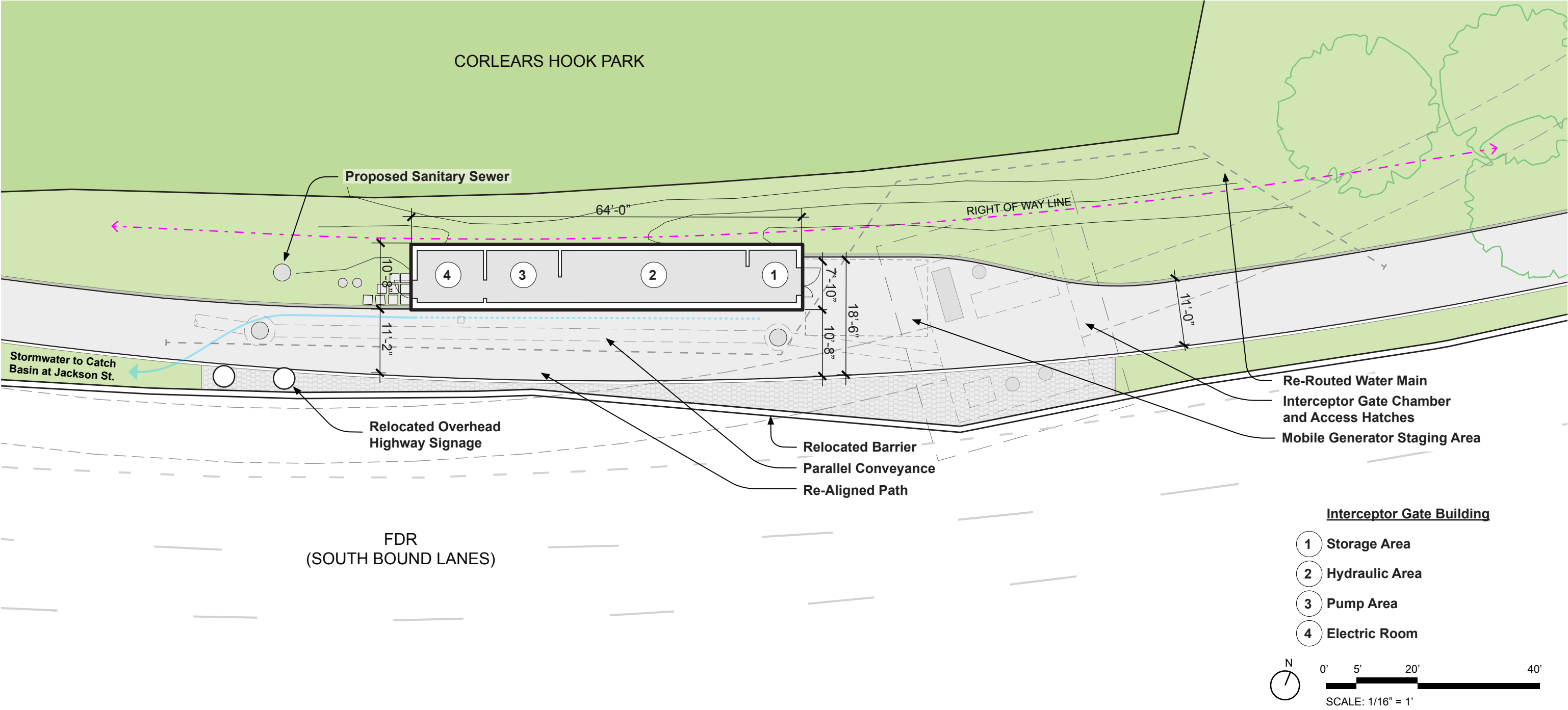
INTERCEPTOR GATE HOUSE

CONTEXT PLAN



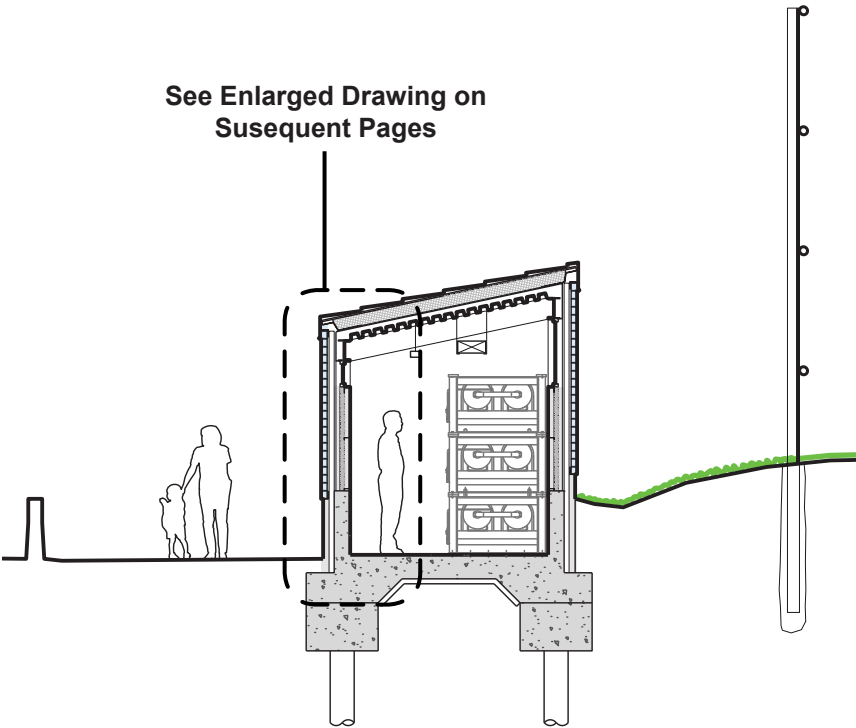
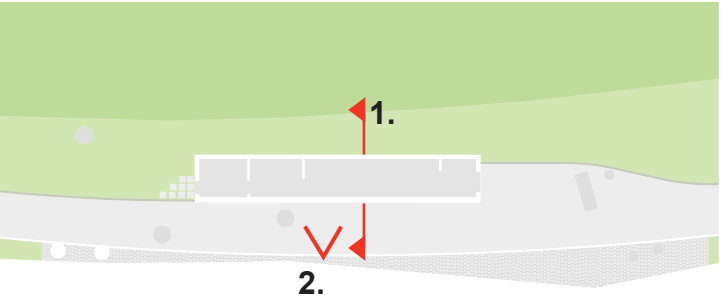
INTERCEPTOR GATE HOUSE

SITE PLAN

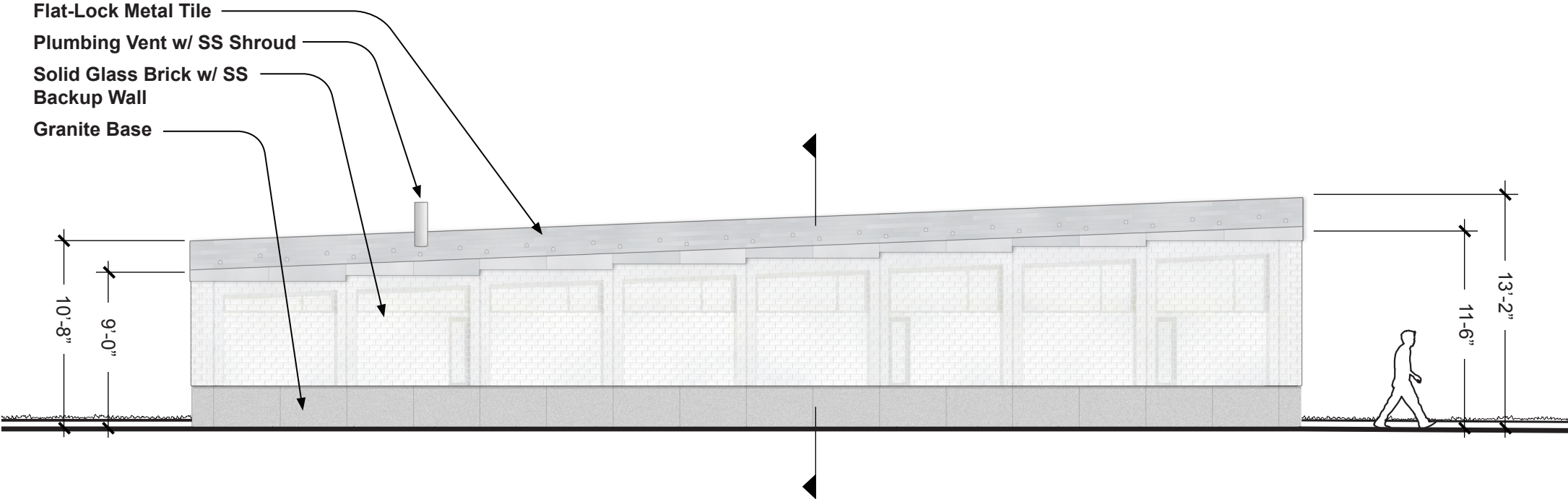


INTERCEPTOR GATE HOUSE

SECTION AND ELEVATION



1. CROSS SECTION

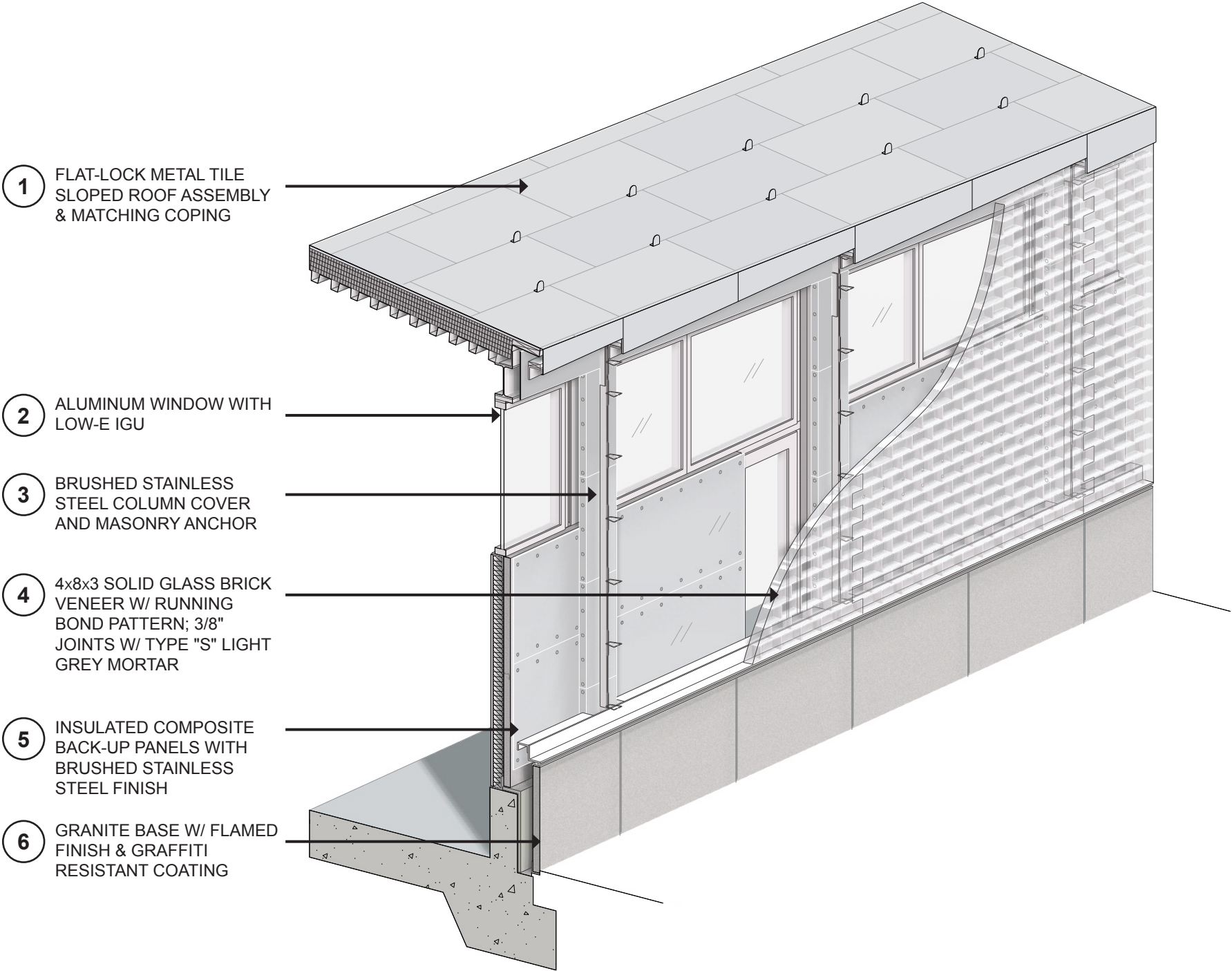


2. SOUTH ELEVATION

0' 10' 20'
SCALE: 1/8" = 1'

INTERCEPTOR GATE HOUSE

FACADE DETAIL



CUTAWAY AXONOMETRIC



DETAILED RENDERED ELEVATION

INTERCEPTOR GATE HOUSE

AERIAL VIEW



PLANTING STRATEGY

CONTEXT

TALL, SPREADING CANOPY, WITH DENSE SHADE

SHRUBBY, DENSE GROUNDPLANE

ORNAMENTAL, SEASONAL UNDERSTORY TREES

TALL, SPREADING CANOPY, WITH DAPPLED SHADE

CLEAR UNDERSTORY WITH OPEN LAWN

TALL, SPREADING CANOPY, WITH CLEARINGS

COLORFUL, TEXTURAL PERENNIAL & GRASS GROUNDPLANE

ORNAMENTAL, SEASONAL UNDERSTORY TREES

MID AND UNDERSTORY MARITIME TREES

ORNAMENTAL MARITIME PERENNIALS & GROUNDPLANE

MARITIME SHRUBS

HIGH, FULL CANOPY
CREATES CONNECTED,
DAPPLED SHADE

WOODLAND
EDGES

PASTORAL
OPENINGS

LAYERED
GROVES

MARITIME
EDGES

- Location: Western urban edge of park. Ornamental understory trees, conifers, shrubs, and perennials provide visual interest along paths and slopes while buffering views
- Maintenance: Trees, shrubs, groundcovers

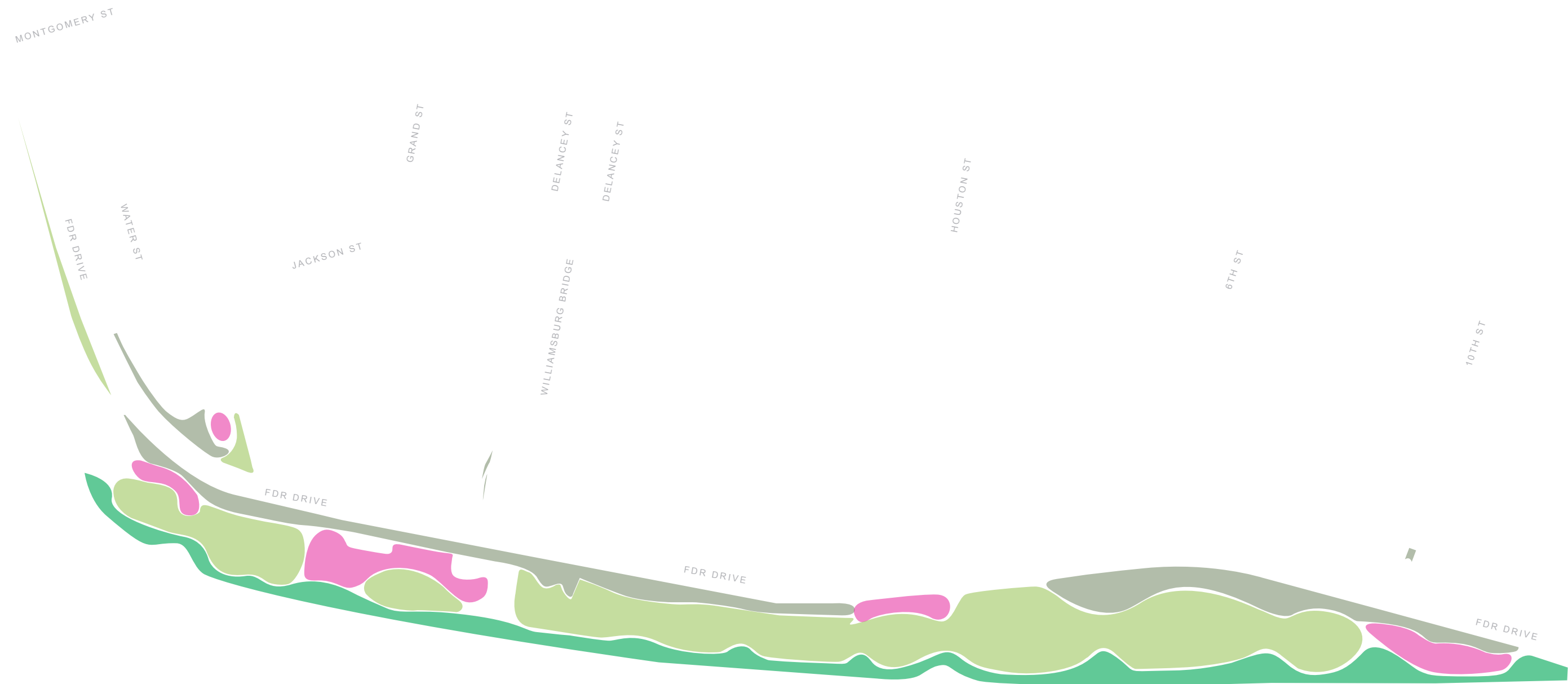
- Location: Open lawns and spectator areas
- Lawn groundplane maintains open sight lines and open circulation
- Maintenance: Trees, lawn

- Location: Clearing edges and special areas
- Ornamental understory trees and a low perennial groundplane maintain veiled, eye-level sight lines
- Maintenance: Trees, garden beds

- Location: Maritime edges of open spaces and esplanade
- Mid and Understory trees, maritime evergreens, shrubs, and grasses provide shade and interest along the river edge
- Maintenance: Trees, shrubs, grasses

PLANTING STRATEGY

CONTEXT



WOODLAND
EDGES

PASTORAL
OPENINGS

LAYERED
GROVES

MARITIME
EDGES

TREE CANOPY

CONTEXT

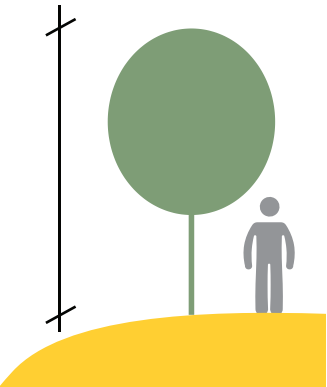


TREE SIZE AT PLANTING

AVERAGE HEIGHT AT 3"-3.5" CALIPER:
14'-16'

TYPICAL MAXIMUM HEIGHT: **18'**

(per ANSI Z60.1)



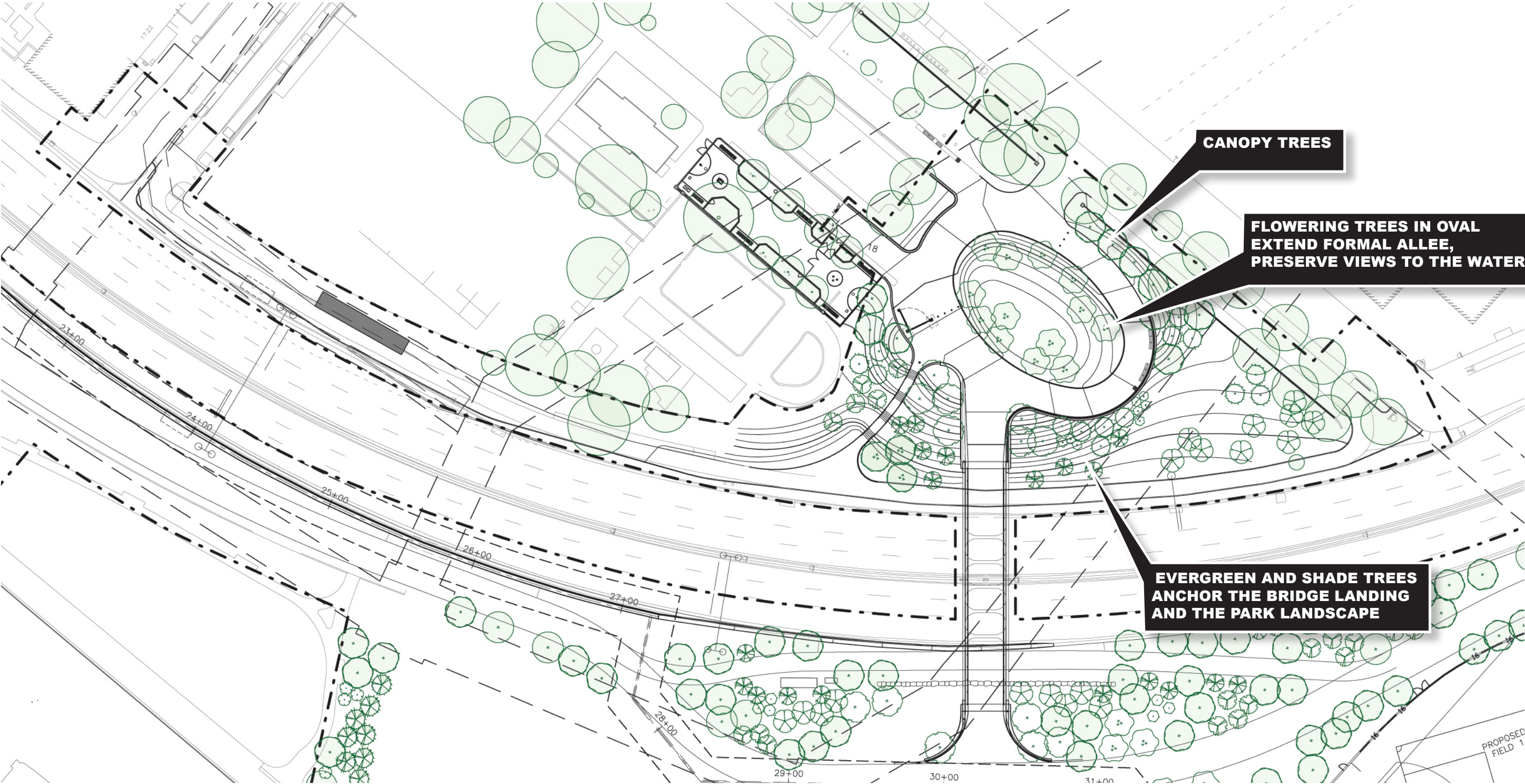
- PROPOSED TREES
- Existing trees to remain

NOTES:
TREE GROWTH WILL VARY BY SPECIES, BUT IN NURSERY SETTINGS A RULE OF THUMB IS THAT TREES WILL OFTEN ADD ½" CALIPER PER YEAR WITH 1'-2' OF GROWTH IN THE CANOPY.

THE DESIGN TEAM IS WORKING WITH PARKS PROCUREMENT TO IDENTIFY WHETHER SOME SPECIES MAY BE ABLE TO BE SOURCED AT LARGER SIZES WITHOUT COMPROMISING TREE HEALTH.

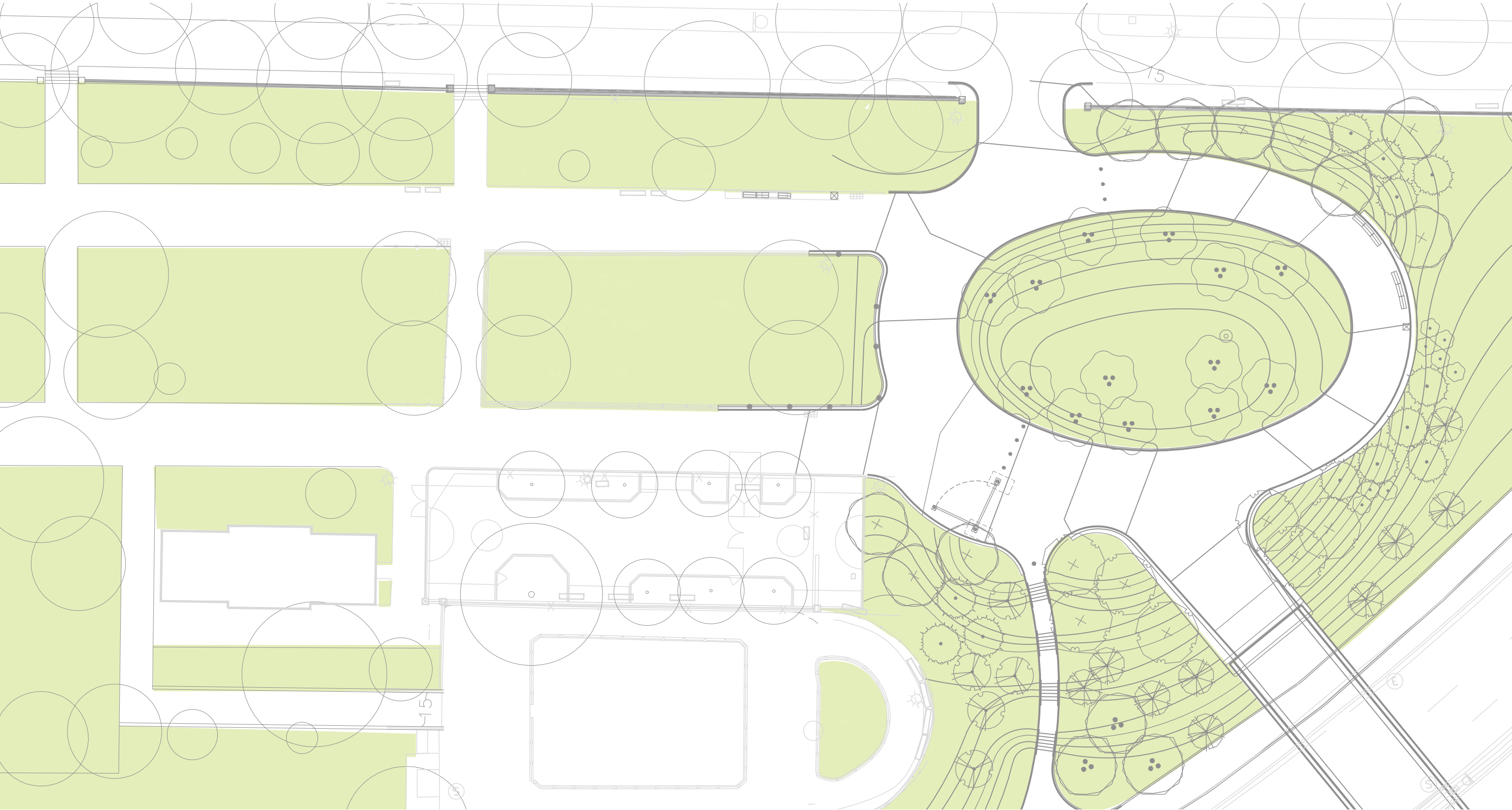
TREE CANOPY

CORLEARS HOOK PARK



CORLEARS HOOK PARK

SITE PLAN



0 30
Scale: 1" = 30'-0"

