

East Side Coastal Resiliency

CB6 Land Use & Waterfront Committee
433 1st Avenue, Room 220 (NYU School of Dentistry)

November 25, 2019



PRESENTATION AGENDA

SITE DESIGN UPDATE: PROJECT AREA 2

NEIGHBORHOOD PARK IMPROVEMENTS

PROJECT AREA 2 CONSTRUCTION PHASING

ENVISION SUSTAINABILITY RATING SYSTEM

PROJECT SCHEDULE

An aerial photograph of a city waterfront, likely New York City, showing a bridge crossing a body of water. The foreground features a park area with green fields, trees, and a winding path. The background is a dense urban landscape with numerous buildings. The entire image is overlaid with a semi-transparent teal color.

SITE DESIGN UPDATE: PROJECT AREA 2

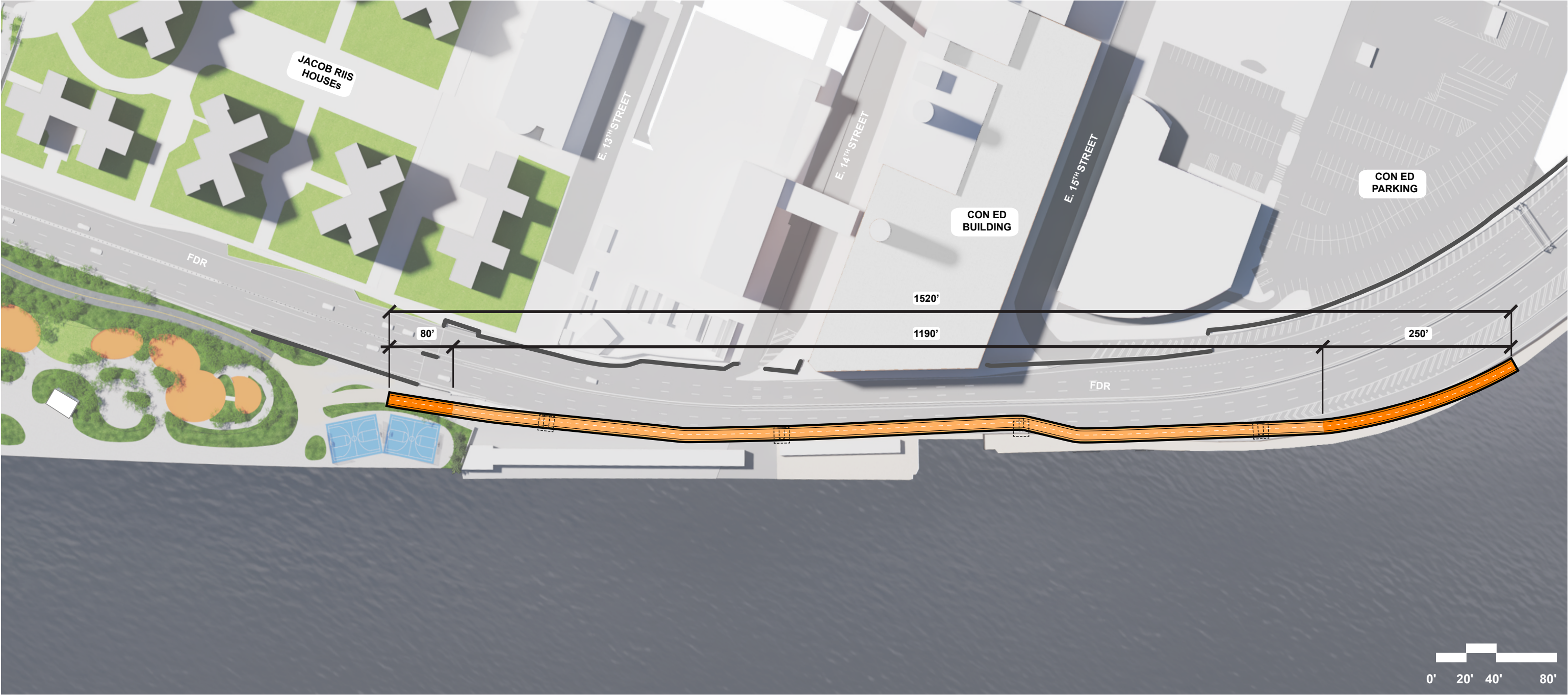
PROJECT AREA 2

SITE DESIGN



PINCH POINT FLYOVER BRIDGE

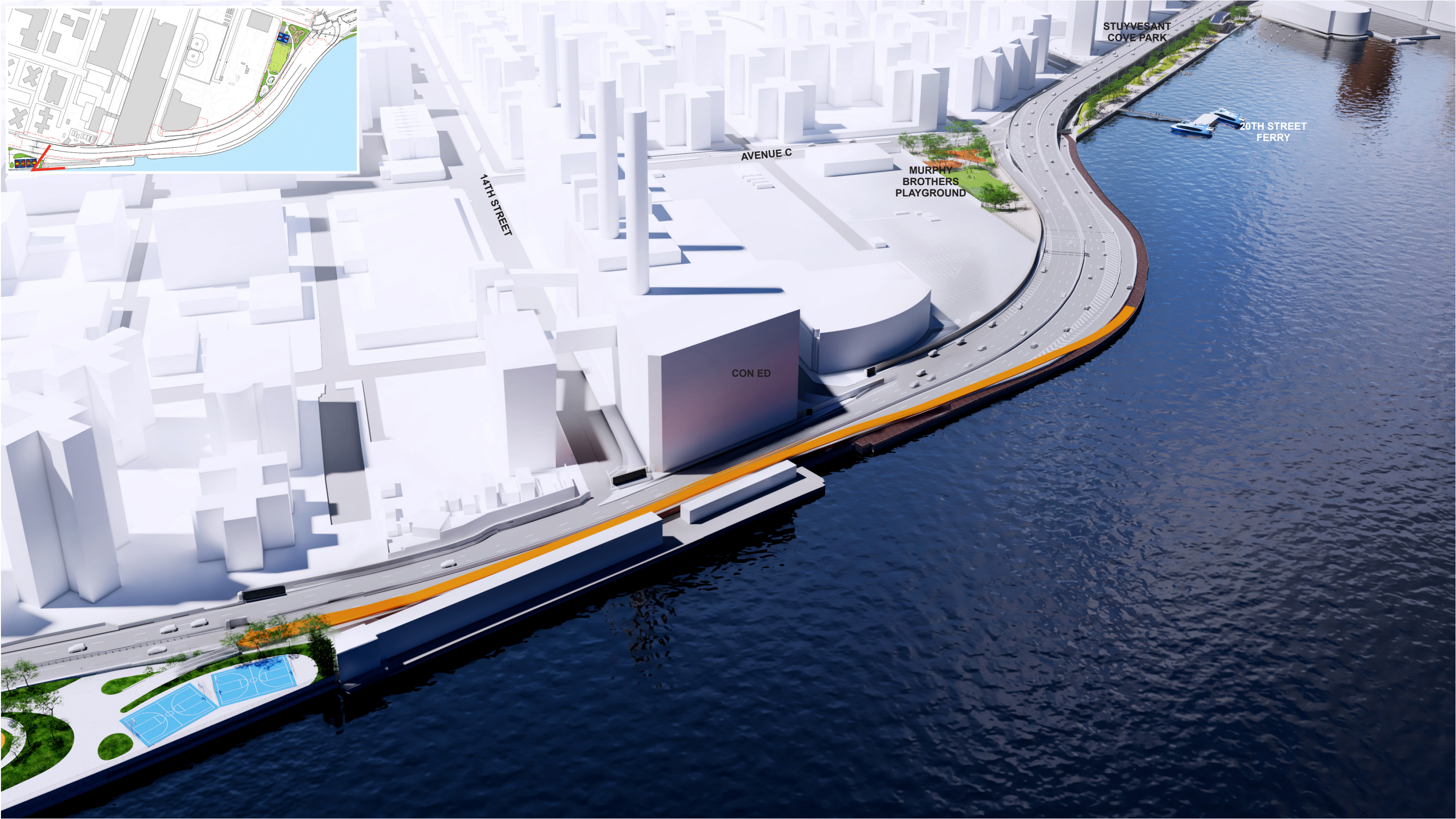
PLAN VIEW



- FLYOVER BRIDGE
- BRIDGE APPROACH
- FLYOVER BRIDGE FOUNDATION

PINCH POINT AREA

AERIAL VIEW



FLOODWALL ALONG FDR

AERIAL VIEW



REACHES L-N

AERIAL VIEW



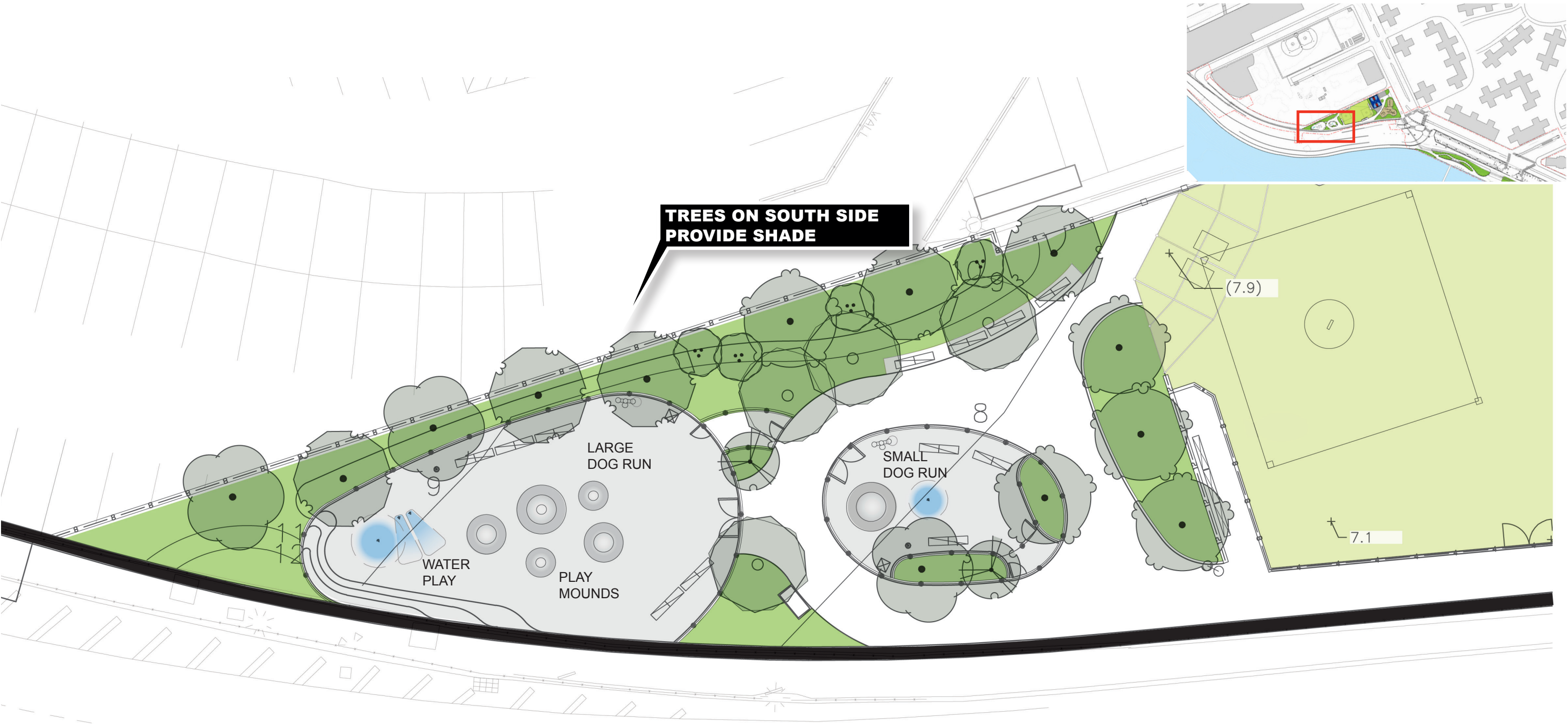
MURPHY BROTHERS PLAYGROUND

AERIAL VIEW



MURPHY BROTHERS DOG RUN

PLAN VIEW

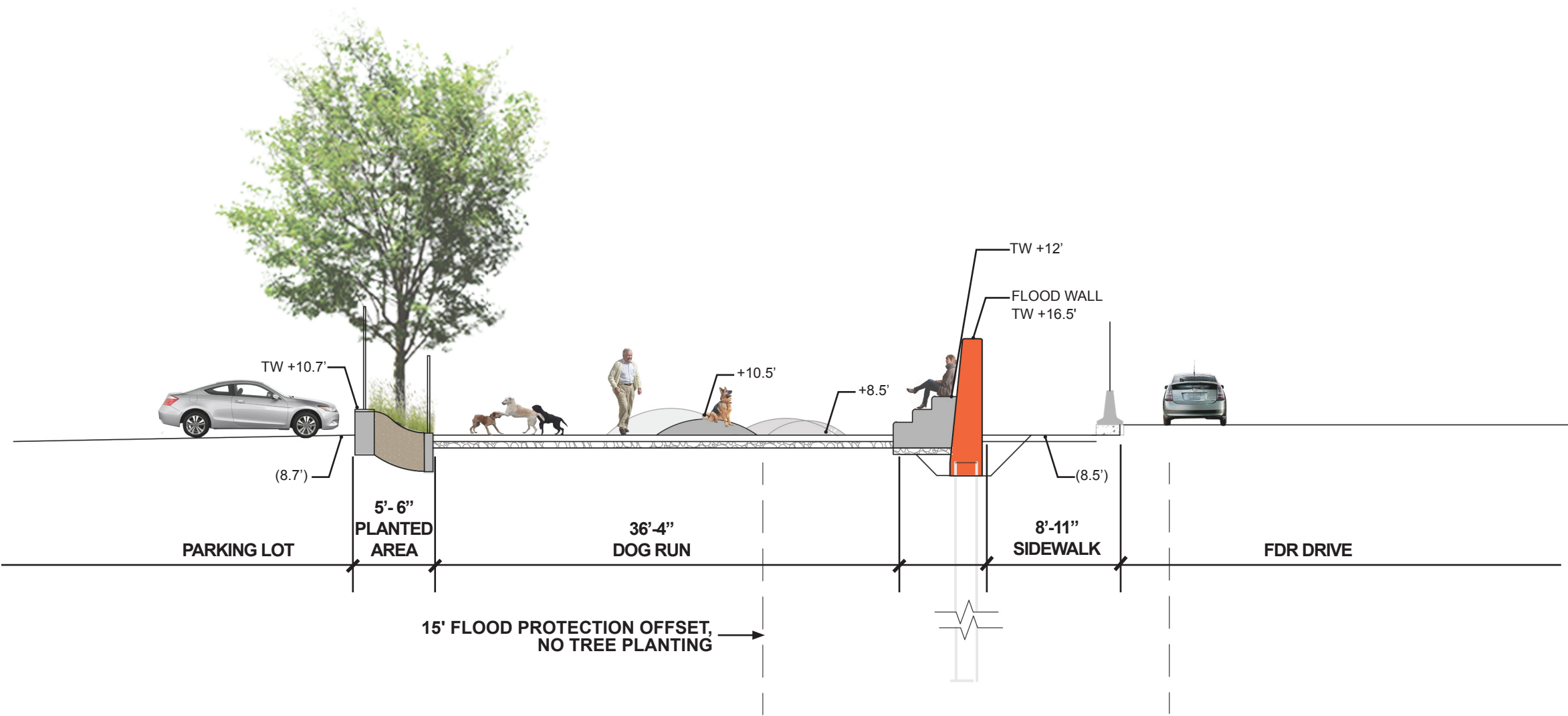


0 20
Scale: 1" = 20'-0"



MURPHY BROTHERS DOG RUN

SECTION



0 20
Scale: 1" = 10'-0"

STUYVESANT COVE PARK

AERIAL VIEW



EAST 20TH STREET DESIGN

AERIAL VIEW



EAST 20TH STREET ENTRY

PERSPECTIVE VIEW



STUYVESANT COVE BIKE LANE

PERSPECTIVE VIEW



STUYVESANT COVE PARK

PERSPECTIVE VIEW



STUYVESANT COVE PARK

PERSPECTIVE VIEW



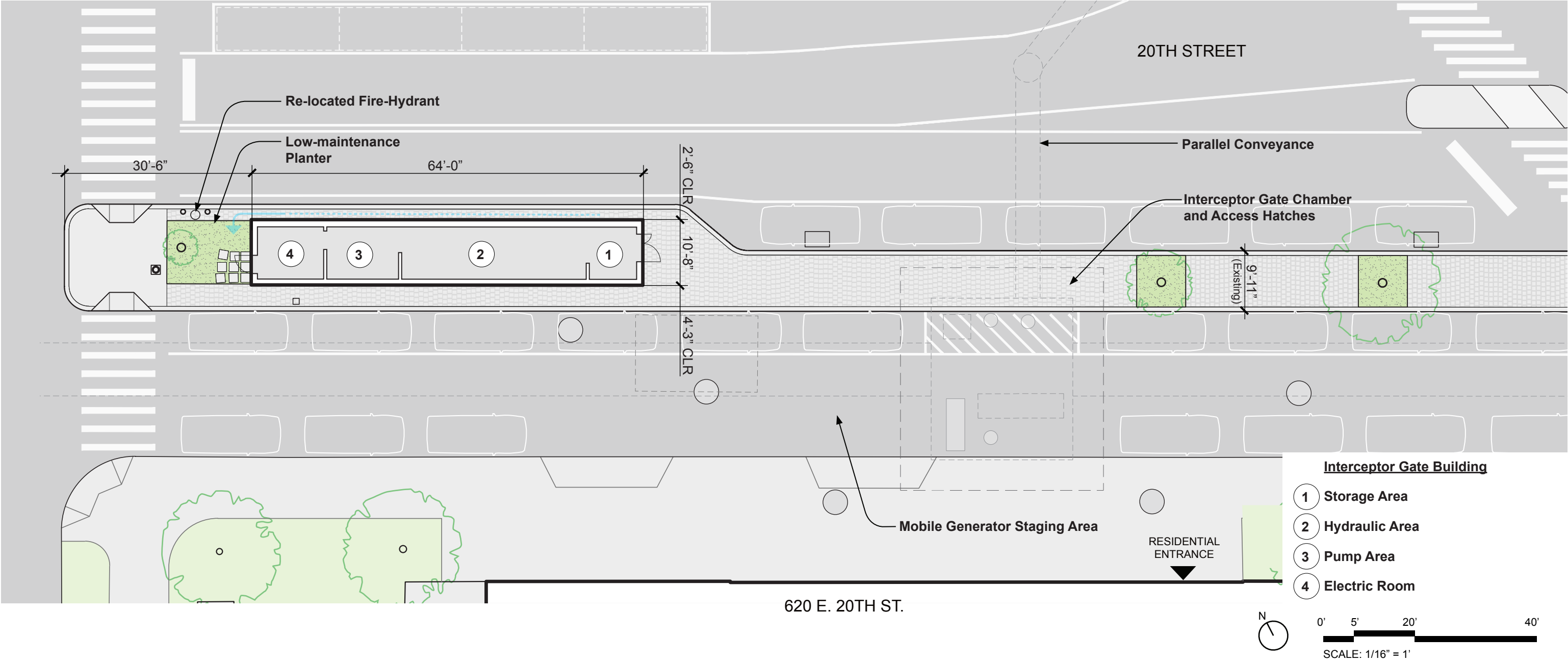
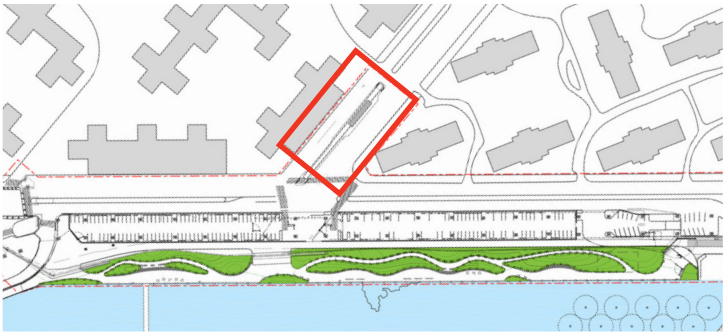
EAST 20TH STREET ENTRY PLAZA

PERSPECTIVE VIEW



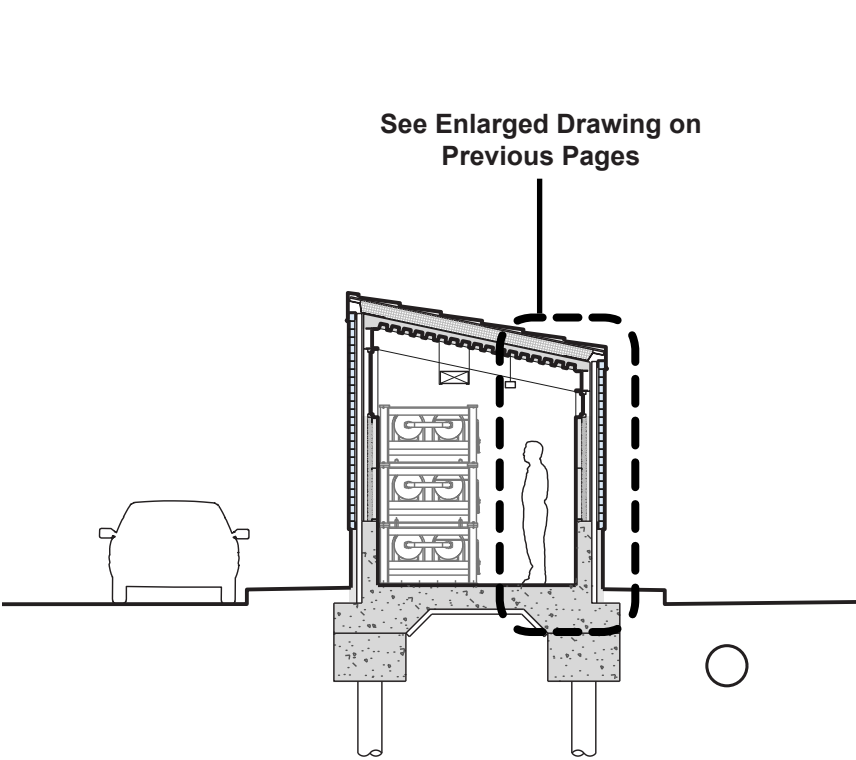
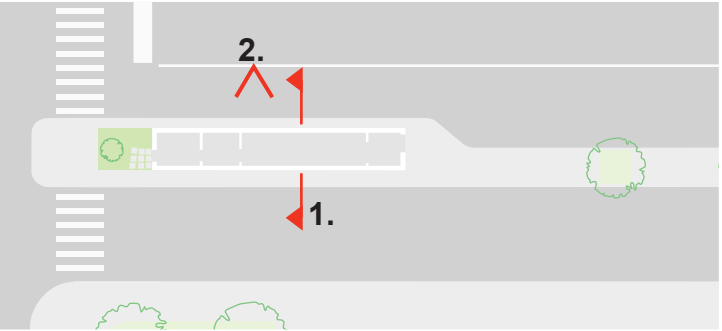
INTERCEPTOR GATE BUILDING

NORTH SITE PLAN

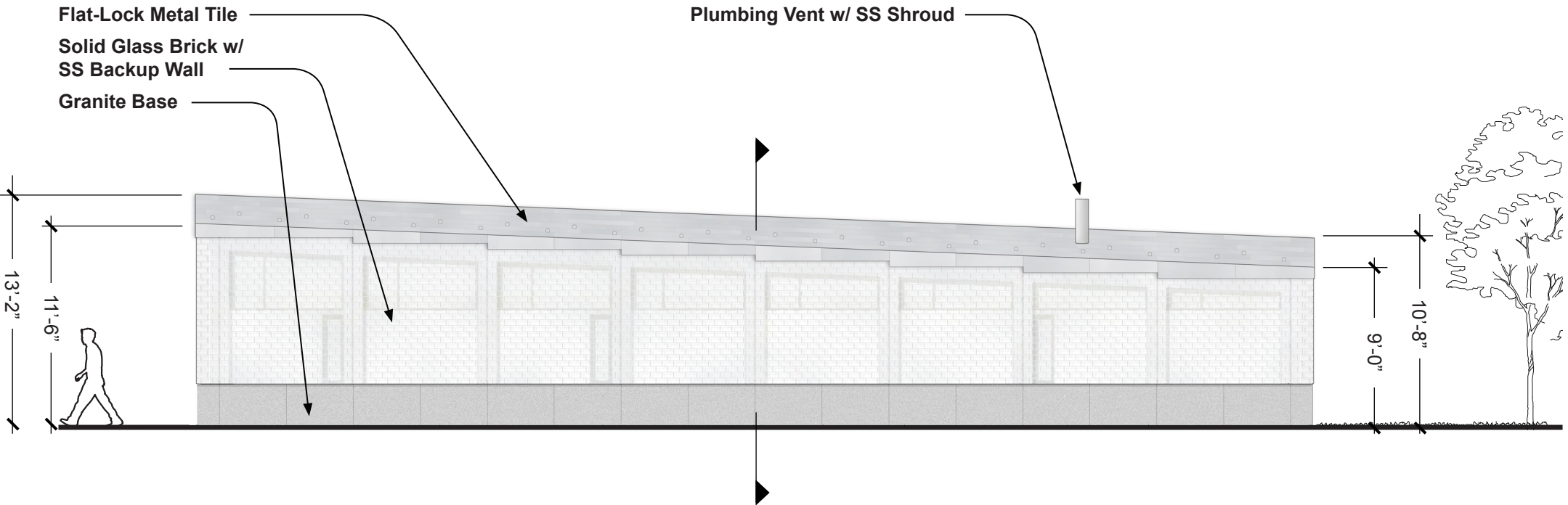


INTERCEPTOR GATE BUILDING

SECTION AND ELEVATION



1. CROSS SECTION



2. NORTH ELEVATION



INTERCEPTOR GATE BUILDING

VIEW FROM NORTHWEST

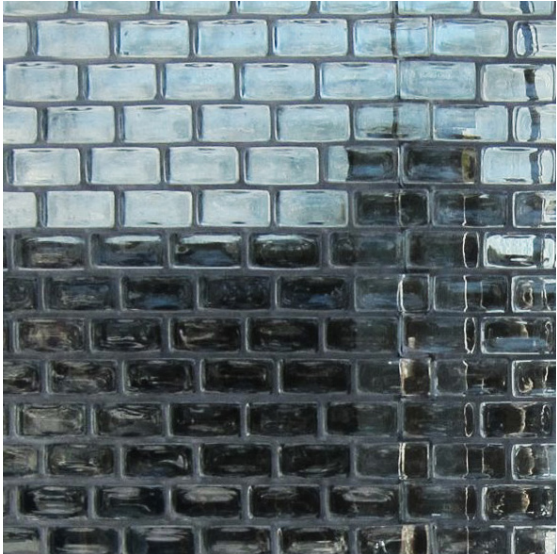


INTERCEPTOR GATE BUILDING

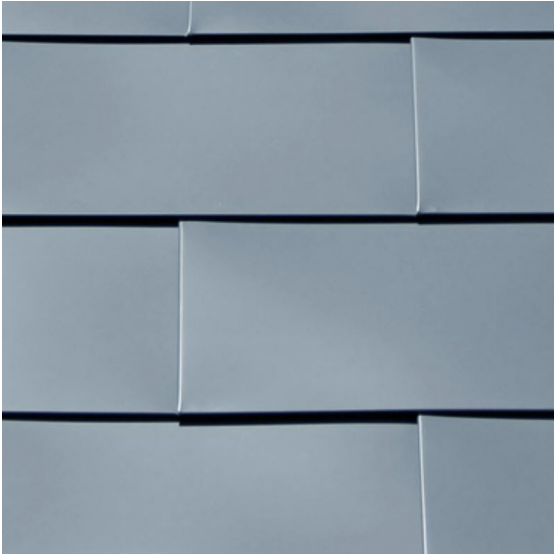
MATERIAL PALETTE



DETAIL ELEVATION



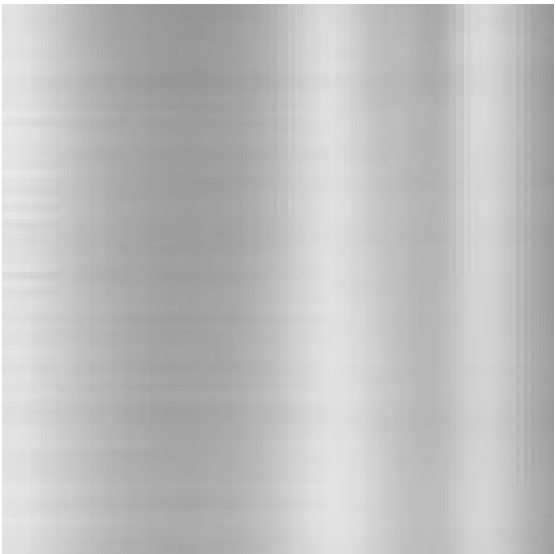
2 **SOLID GLASS BRICK**
Façade



1 **FLAT-LOCK METAL TILE**
Sloped Roof Assembly



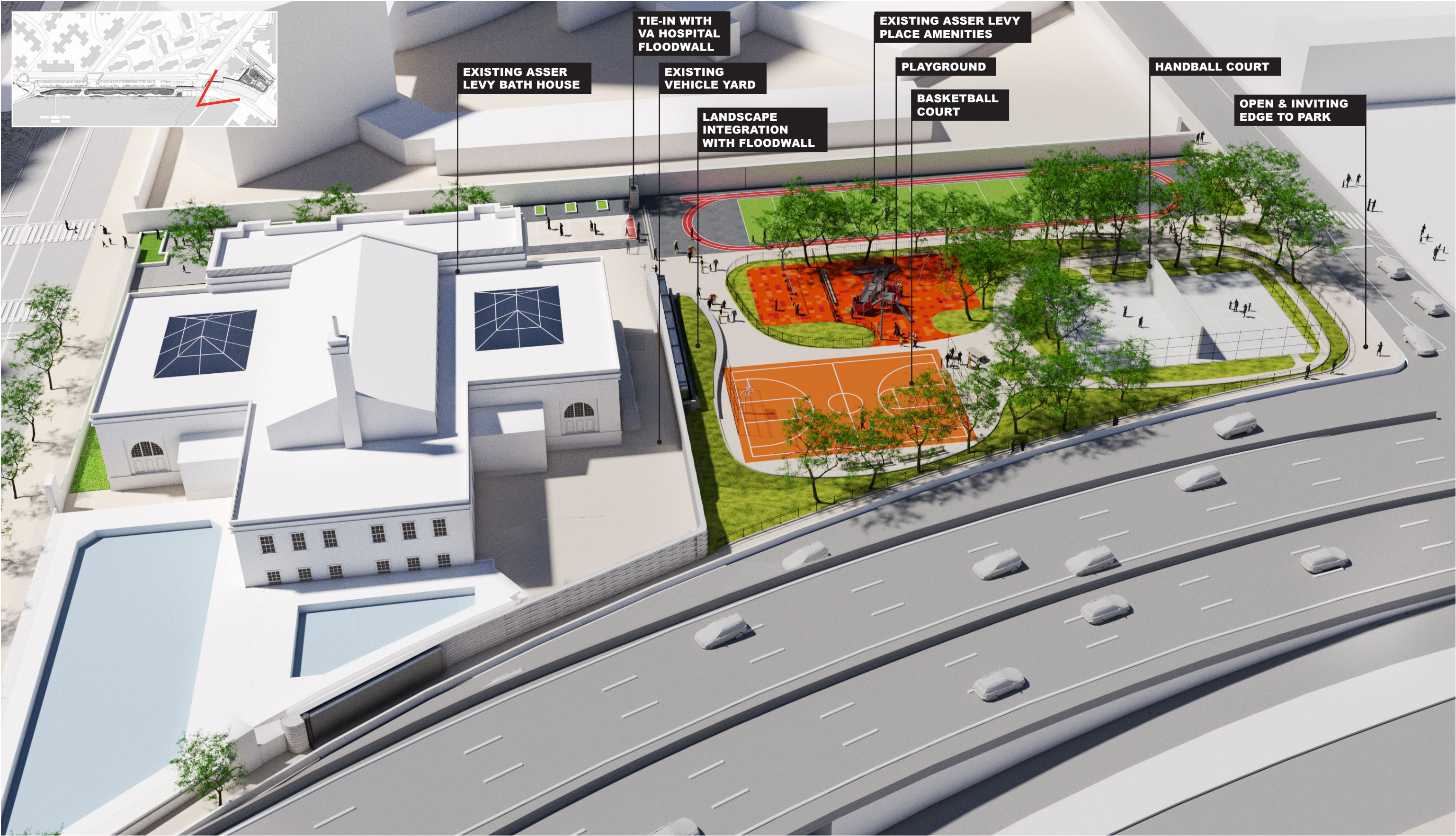
4 **Barre Grey Granite**
Stone Base



3 **STAINLESS STEEL**
Backup Wall & Doors

ASSER LEVY PLAYGROUND

AERIAL VIEW



PROJECT AREA 2 PLANTING

PLANTING CONCEPT



0 100 200
Scale: 1" = 160'-0"

WOODLAND

WET
MEADOW

GRASS
LAND

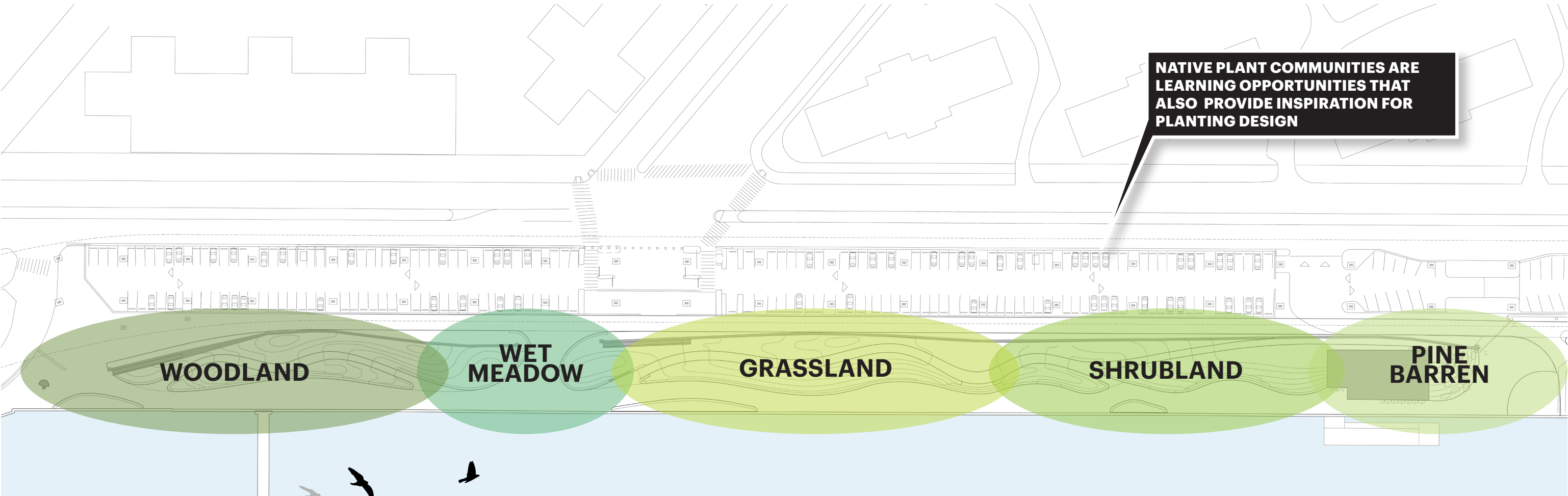
SHRUB
LAND

PINE
BARREN

PLAY
GROUNDS

STUYVESANT COVE PLANTING

PLANTING CONCEPT



PLANTING PALETTE

TREES

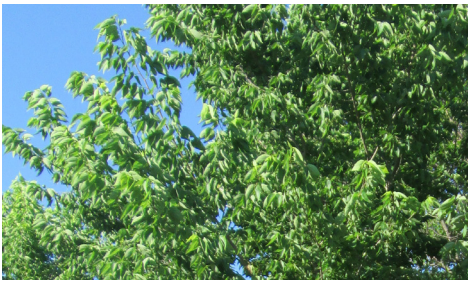
TREES



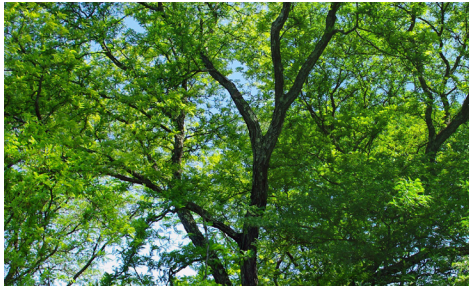
Acer rubrum



Amalanchier laevis



Celtis occidentalis



Gleditsia triacanthos



Juniperus virginiana



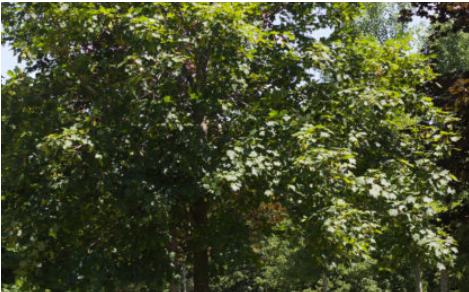
Nyssa sylvatica



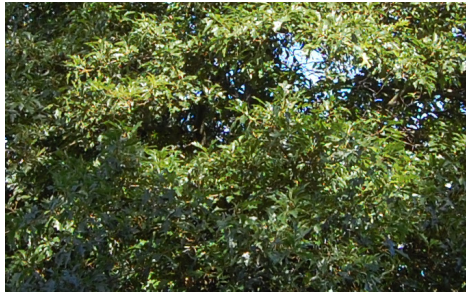
Pinus rigida



Pinus virginiana



Quercus bicolor



Quercus coccinea



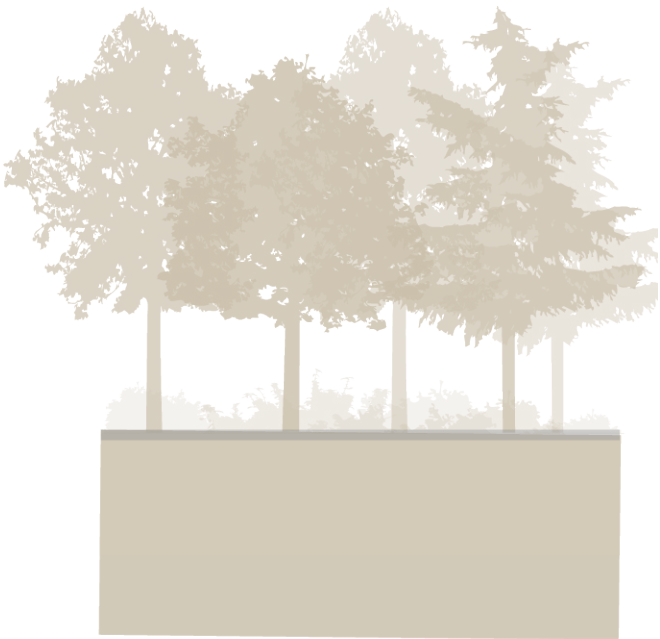
Quercus nuttallii



Quercus palustris



Rhus typhina



PLANTING PALETTE

WOODLAND

SHRUBS						
	<i>Hydrangea quericifolia</i> Pee Wee	<i>Viburnum acerfolium</i>				
GRASSES						
	<i>Carex albicans</i>	<i>Carex appalachica</i>	<i>Carex bicknelli</i>	<i>Carex pensylvatica</i>	<i>Deschampsia flexuosa</i>	<i>Panicum virgatum</i> 'Ruby Ribbons'
PERENNIALS						
	<i>Ageratina altissima</i>	<i>Amsonia hubrichtii</i>	<i>Anemone virginiana</i>	<i>Penstemon calycosus</i>	<i>Aster prenanthoides</i>	<i>Conoclinium coelestinum</i>
						
	<i>Dicentra cucullaria</i>	<i>Eurybia divaricata</i>	<i>Geranium maculatum</i>	<i>Heuchera Americana</i>	<i>Mertensia virginica^</i>	<i>Phlox divaricata</i>
						
	<i>Podophyllum peltatum</i>	<i>Polystichum acrostichoides</i>	<i>Pynanthemum muticum</i>	<i>Pynanthemum tenuifolium</i>	<i>Tiarella cordifolia</i>	<i>Tradescantia virginiana</i>
						
	<i>Tradescantia ohiensis</i>	<i>Viola labradorica</i>	<i>Viola sororia</i>			



PLANTING PALETTE

WET MEADOW

GRASSES



Carex stricta



Carex pensylvatica



Carex vulpinoidea



Juncus effusus



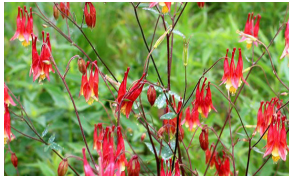
Juncus tenuis



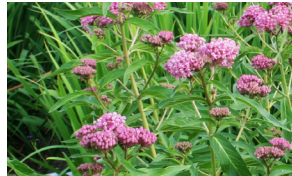
Panicum virgatum
'Ruby Ribbons'



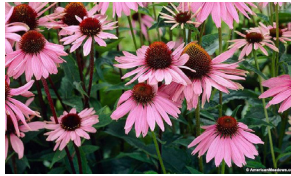
Anemone canadensis



Aquilegia canadensis



Asclepias incarnata



Echinacea purpurea



Equisetum hyemale

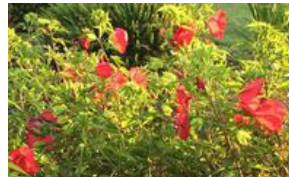


Eutrochium dubium

PERENNIALS



Helianthus decapetalus



Hibiscus coccineus



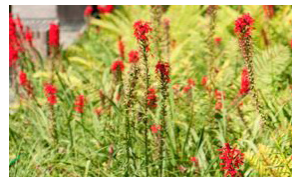
Hibiscus moscheutos



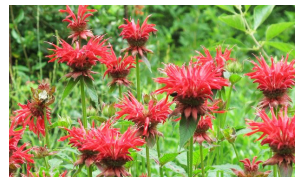
Iris versicolor



Liatris spicata



Lobelia cardinalis^



Monarda didyma



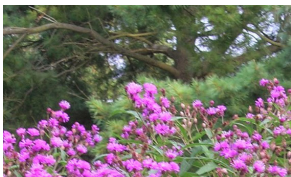
Monarda punctata



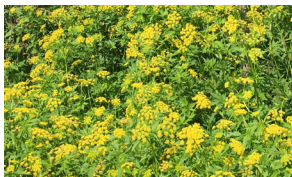
Onoclea sensibilis



Verbena hastata



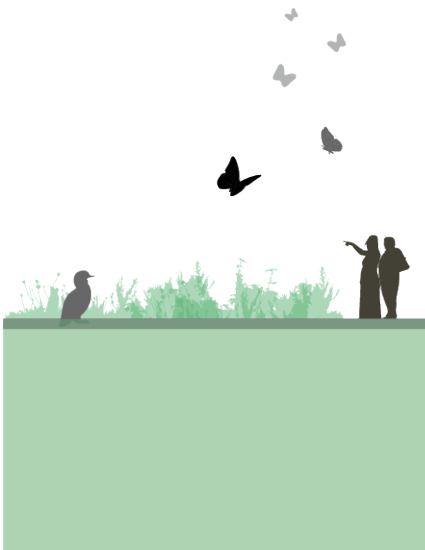
Vernonia
noveboracensis



Zizia aurea*

*Solar1 Plant List (2016)
^Short-Lived

WET
MEADOW



PLANTING PALETTE

GRASSLAND

GRASSES



Bouteloua curtipendula



Bouteloua gracilis



Carex albicans



Carex pensylvanica



Chasmanthium latifolium



Deschampsia cespitosa



Deschampsia flexuosa



Panicum virgatum
Ruby Ribbons



Schizachyrium scoparium



Sporobolus cryptanandrus



Sporobolus heterolepis



Sorghastrum nutans

PERENNIALS



Amsonia hubrichtii



*Asclepias syriaca**



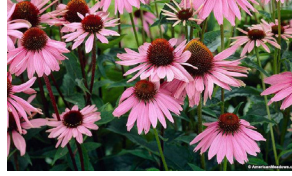
*Asclepias tuberosa**



*Asclepias verticillata**



Baptisia australis



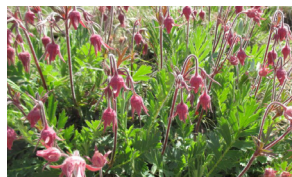
*Echinacea purpurea**



Eryngium yuccifolium



*Eutrochium purpureum**



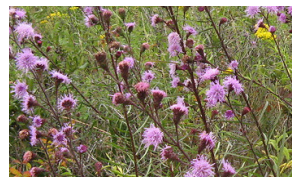
*Geum triflorum**



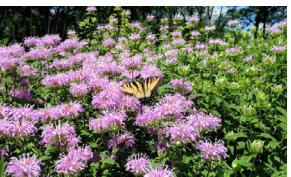
Helianthus decapetalus



Liatris aspera



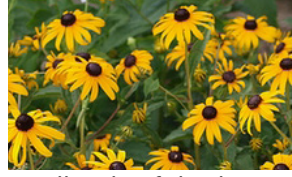
*Liatris scariosa novae angliae**



Monarda fistulosa



Phlox paniculata



*Rudbeckia fulgida**



Solidago juncea



*Solidago rigida**



*Symphyotrichum novi-angelli**



Symphyotrichum novi-belgii



*Symphyotrichum oblongifolium**





Zizia aptera / aurea**

GRASS
LAND



PLANTING PALETTE

SHRUBLAND

SHRUBS						
	<i>Amorpha fruticosa</i>	<i>Ceanothus americanus</i>	<i>Clethra alnifolia</i>	<i>Diervilla lonicera</i>	<i>Diervilla sessifolia</i>	<i>Hypericum prolificum</i>
						
	<i>Itea virginica</i>	<i>Morella pensylvanica</i>	<i>Prunus maritima</i>	<i>Rhus aromatica</i>	<i>Rosa carolina</i>	<i>Rosa virginica</i>
GRASSES						
	<i>Andropogon virginicus</i>	<i>Bouteloua gracilis</i>	<i>Carex albicans</i>	<i>Carex pensylvanica</i>	<i>Chasmanthium latifolium</i>	<i>Deschampsia flexuosa</i>
						
	<i>Panicum virgatum</i> <i>Ruby Ribbons</i>	<i>Schizachyrium scoparium</i>	<i>Sporobolus heterolepis</i>			
PERENNIALS						
	<i>Achillea millefolium</i>	<i>Amsonia hubrichtii</i>	<i>Asclepias verticillata*</i>	<i>Aster prenanthoides</i>	<i>Eryngium yuccifolium</i>	<i>Monarda punctata*</i>
						
	<i>Phlox divaricata</i>	<i>Physostegia virginiana*</i>	<i>Pynanthemum tenuifolium*</i>	<i>Rudbeckia fulgida* / hirta</i>	<i>Solidago odora</i>	<i>Solidago graminifolia*</i>
						
	<i>Solidago semper-virens*</i>	<i>Symphyotrichum oblongifolium*</i>	<i>Zizia aptera* / aurea*</i>			



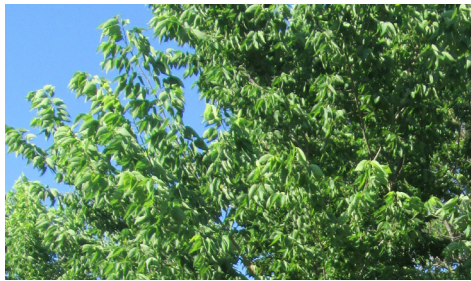
PLANTING PALETTE

PLAYGROUND

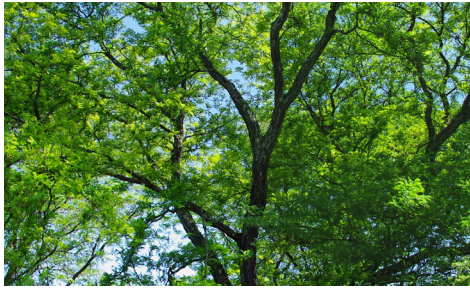
TREES



Acer rubrum



Celtis occidentalis



Gleditsia triacanthos



Ilex opaca 'Jersey Queen'



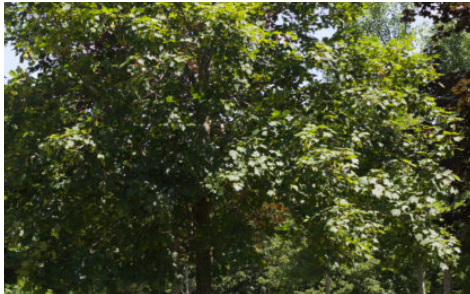
Liquidambar rotundiloba



Quercus rubra



Quercus phellos



Quercus bicolor



Quercus coccinea

SMALL TREES



Amelanchier canadensis
'Autumn Brilliance'



Chionanthus retusus



Magnolia Virginiana



Prunus serrulata 'Mt. Fuji'

PLAY-
GROUNDS

CANOPY TREES FOR
PLAYGROUND SHADE



PLANTING PALETTE

PLAYGROUND

SHRUBS



Aronia melanocarpa



Callicarpa dichotoma



Diervilla lonicera



Hydrangea quericifolia
Pee Wee



Ilex glabra



Prunus laurocerasus
'Otto Luyken'



Rosa carolina

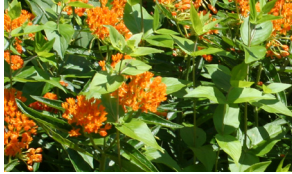


Rhus aromatica
'gro-low'

GROUNDCOVERS



Amsonia hubrichtii



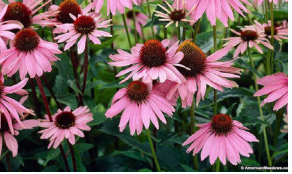
*Asclepias tuberosa**



Carex pensylvatica



Chasmanthium
latifolium



Echinacea purpurea



Geranium maculatum



Liatris spicata

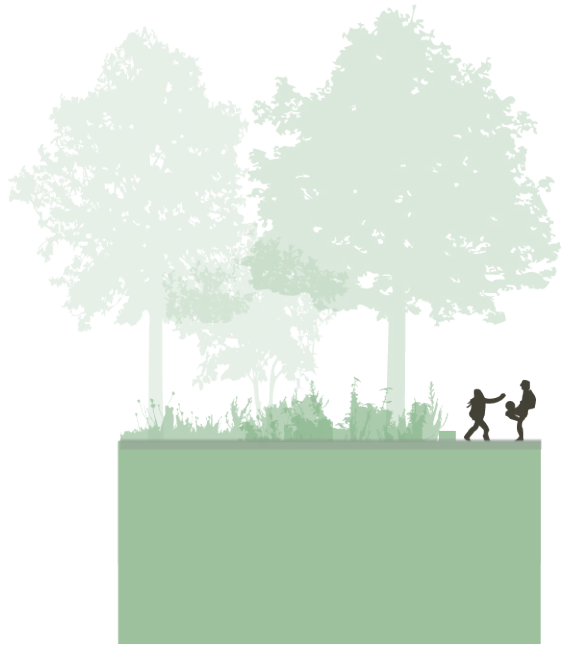


Monarda punctata



Schizachyrium
scoparium

PLAY-
GROUNDS



FLOODWALL SIGNAGE
ELEVATION MARKERS

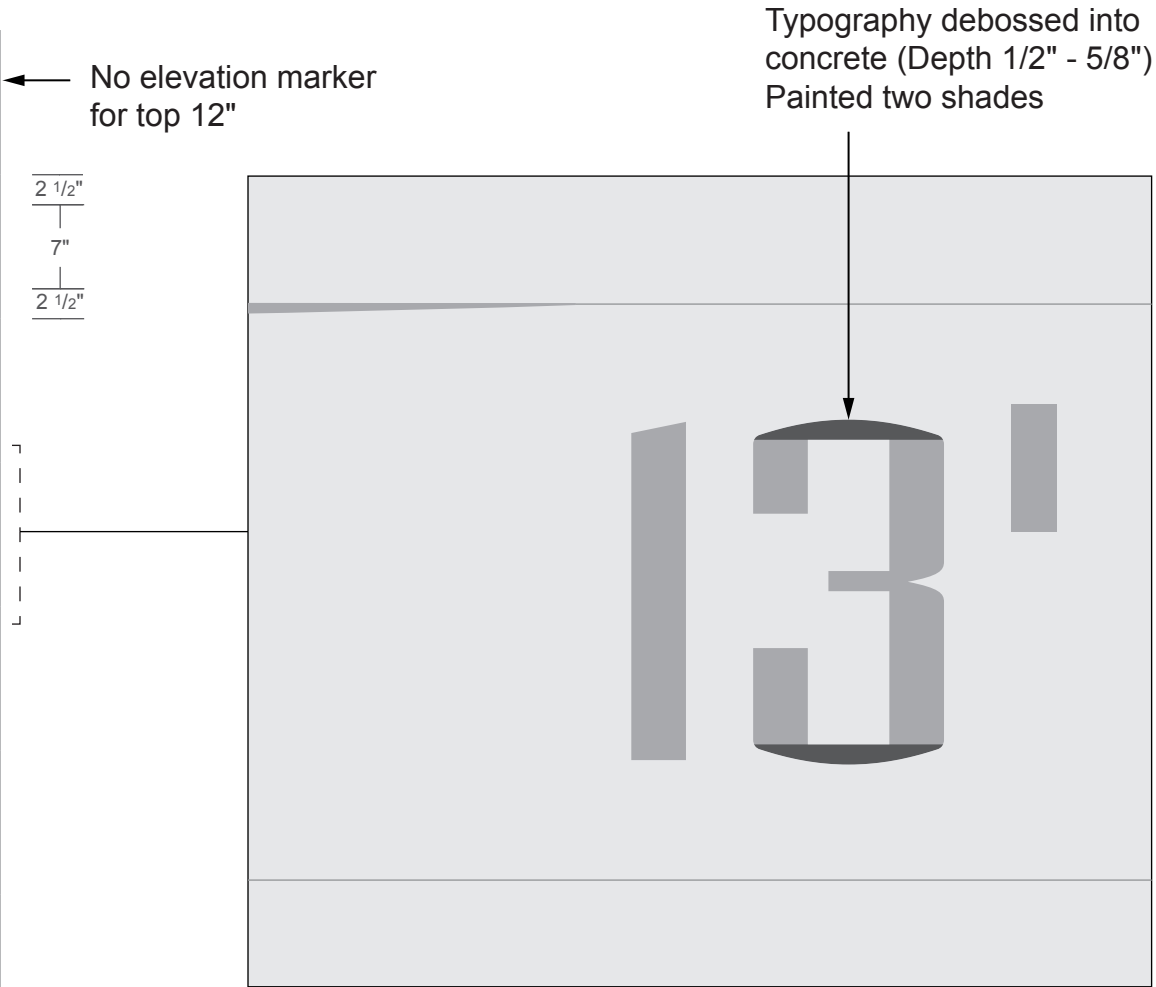


FLOODWALL SIGNAGE

ELEVATION MARKERS



1. FLOODWALL SIGNAGE TYP. ELEVATION



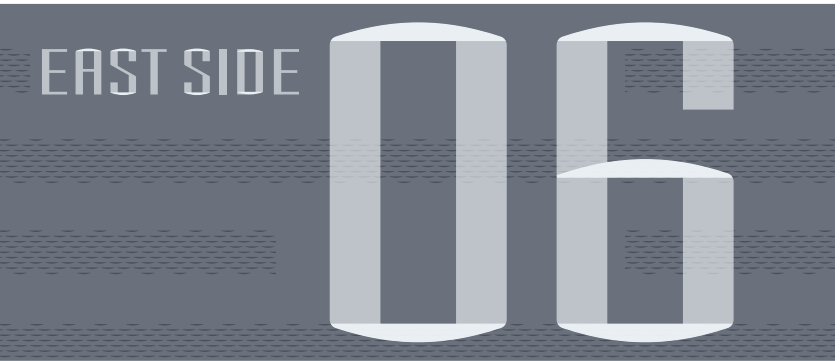
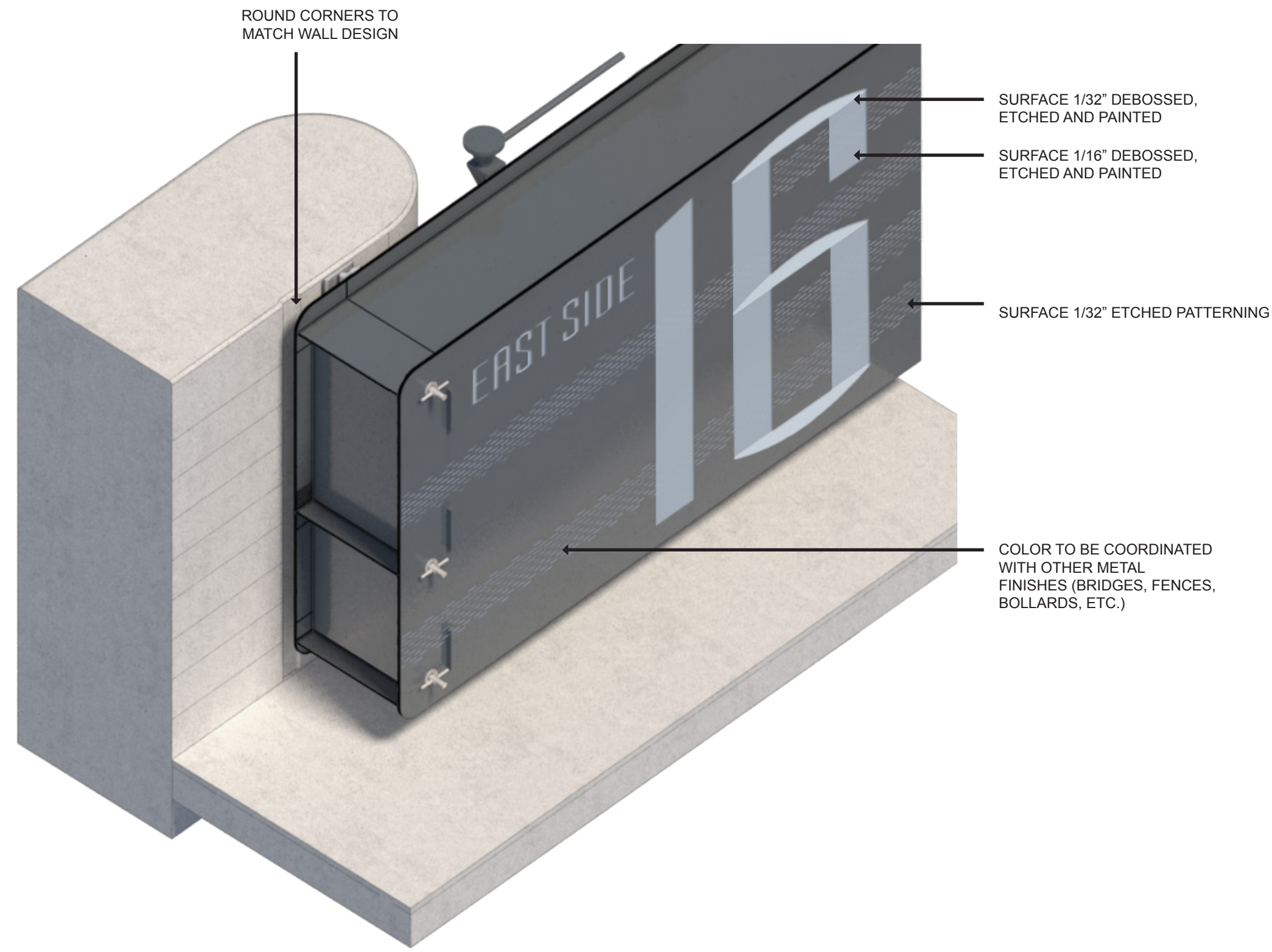
2. FLOODWALL SIGNAGE DETAIL



3. FLOODWALL SIGNAGE DETAIL - SECTION

FLOODWALL SIGNAGE

ELEVATION MARKERS



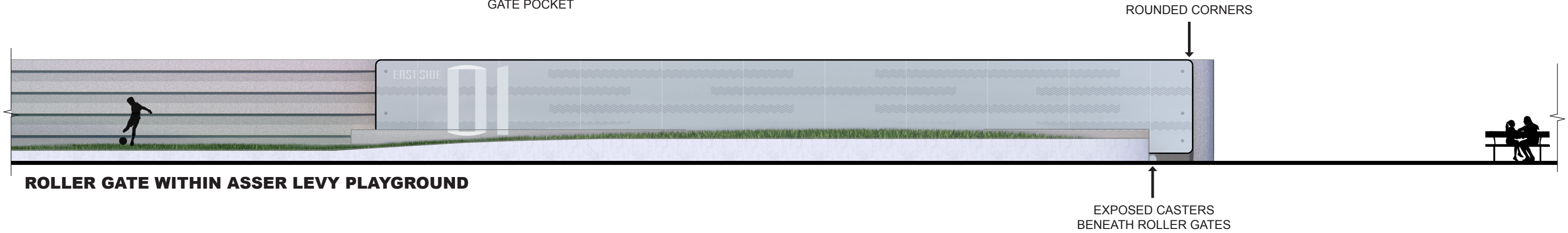
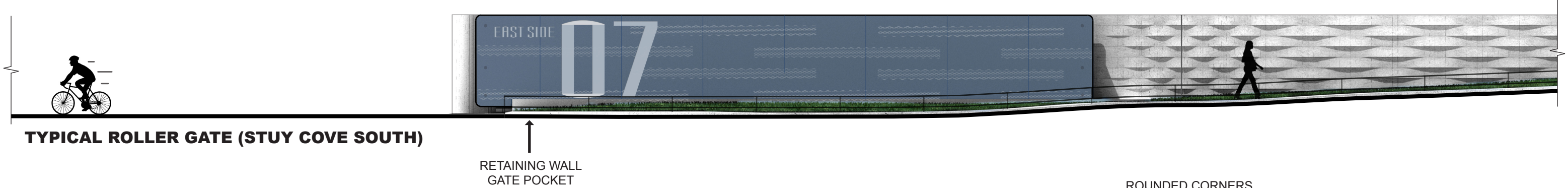
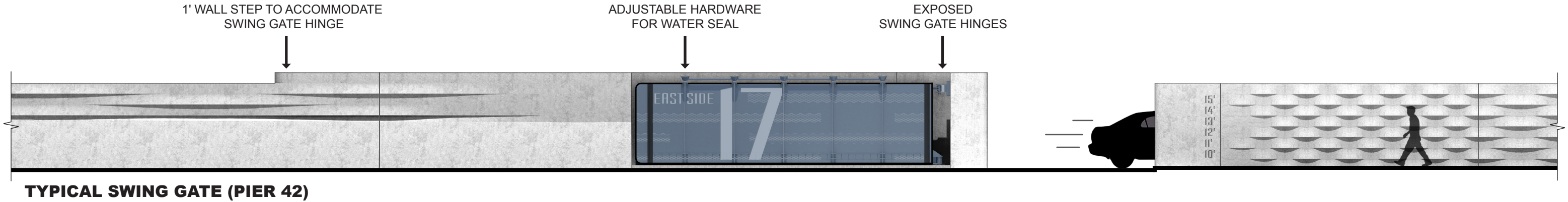
TEXT + LABELING
MUNSEL GREY PAINT (TYP)



TEXT + LABELING
GW GREY PAINT (ASSER LEVY)

FLOODWALL SIGNAGE

GATE MARKERS



WHAT WE'VE HEARD

- **Dog run**
- **Comfort Station at Murphy Brothers Playground**
- **Preservation of the Fire Boat House**
- **Activate Waterside Pier and Pier 42 deck**
- **Mitigation strategies for access to district amenities**
- **Waterside Plaza access and egress**
- **Ambulance access to First Avenue “hospital row” corridor**
- **Treat Asser Levy envelope as one contiguous space**
- **Contextually appropriate design for interceptor gate house**
- **Signage design to maintain neighborhood identity**
- **Institute a phased construction timeline**
- **Plan for noise and dust mitigation in construction area**
- **Robust social media strategy during construction**

An aerial photograph of a city, likely New York City, showing a dense urban landscape with numerous buildings. A large body of water, possibly the Hudson River, is visible on the right side. A bridge, likely the Triborough Bridge, spans the water. The image is overlaid with a teal filter. The text "NEIGHBORHOOD PARK IMPROVEMENTS" is centered in the image.

NEIGHBORHOOD PARK IMPROVEMENTS

ANTICIPATED NEIGHBORHOOD IMPROVEMENTS

PARK UPGRADES



ASPHALT TO TURF (7 SITES)



SOLAR FIELD LIGHTS (6 SITES)



ACCOMMODATING FIELD USERS



TREE PLANTINGS (1,000) & RAIN GARDENS (40)



SPORTS COATING (7 SITES)



PAINTING (16 SITES)

ANTICIPATED NEIGHBORHOOD IMPROVEMENTS

MORE PROGRAMMING AND NEW PARK SPACES



LAGUARDIA BATH HOUSE



TANAHEY PLAYGROUND



PIER 42 PHASE 1: UPLAND PARK



NYCHA OPEN SPACE IMPROVEMENTS



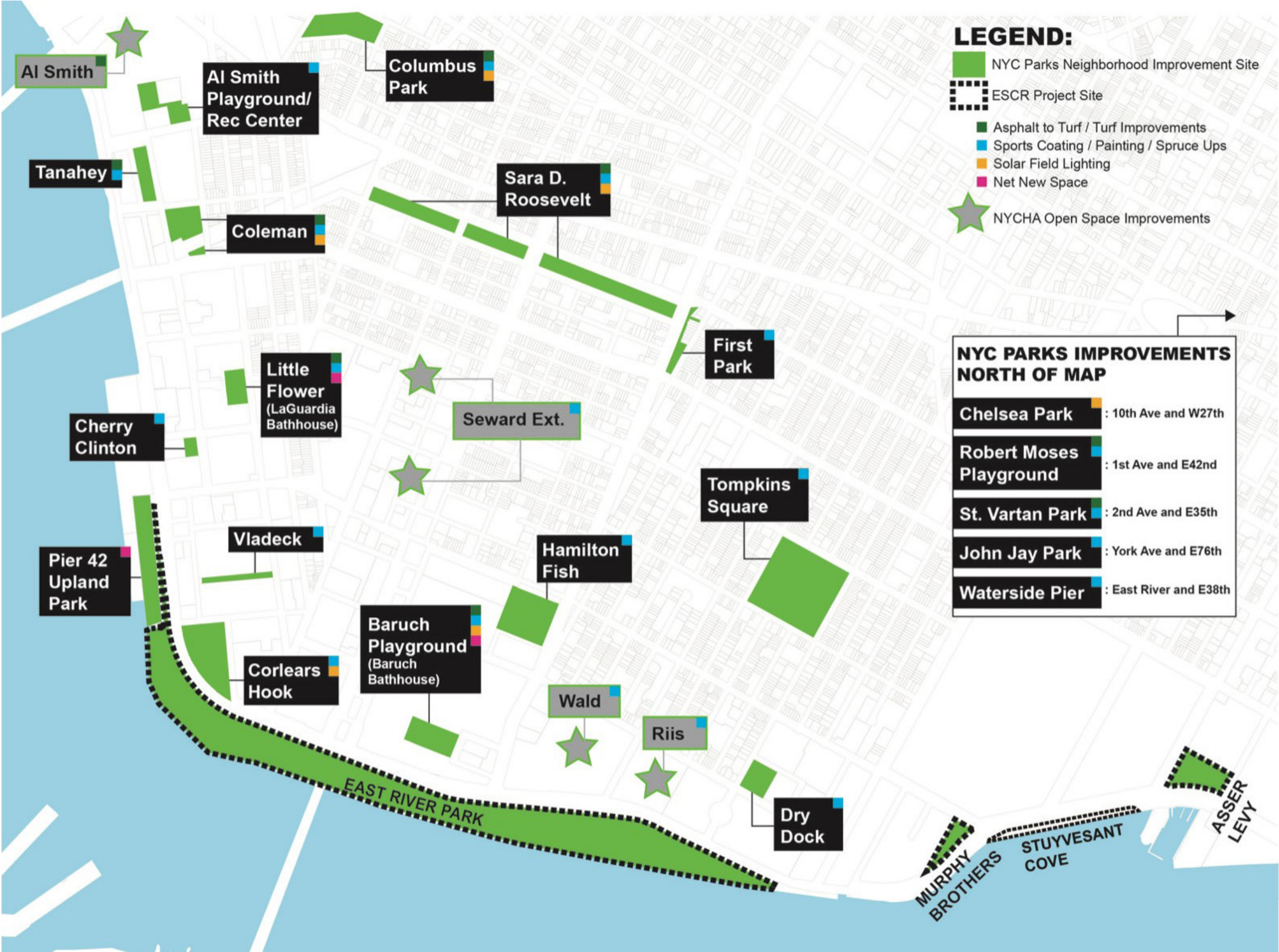
MORE NEIGHBORHOOD PARK STAFF




MORE RECREATIONAL PROGRAMMING

ANTICIPATED NEIGHBORHOOD IMPROVEMENTS

MORE PROGRAMMING AND NEW PARK SPACES

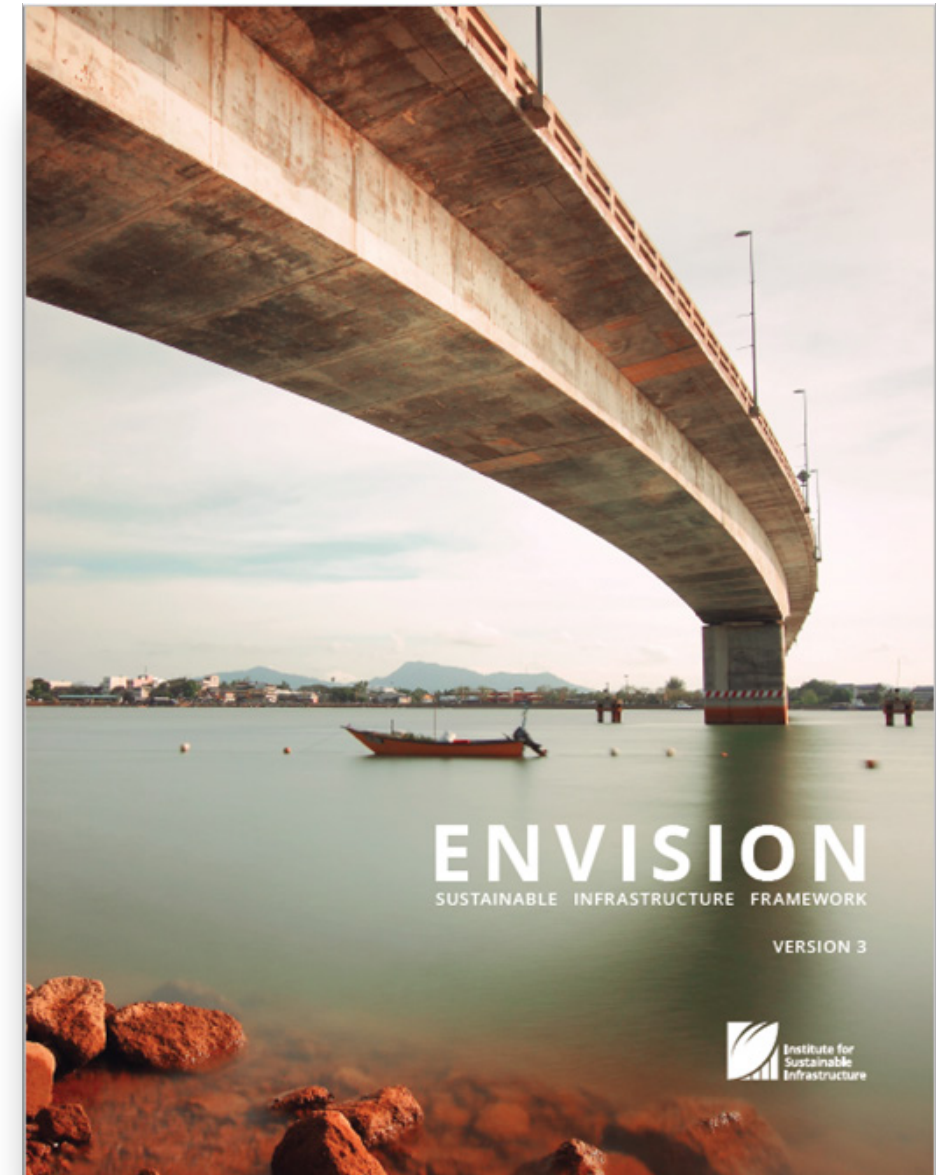


An aerial photograph of a city, likely New York City, showing a dense urban landscape with numerous buildings. A large body of water, possibly the Hudson River, is visible on the right side. A bridge, likely the Triborough Bridge, spans the water. The image is overlaid with a semi-transparent teal gradient. The text "ENVISION SUSTAINABILITY RATING SYSTEM" is centered in the image in a bold, white, sans-serif font.

ENVISION SUSTAINABILITY RATING SYSTEM

ENVISION SUSTAINABILITY RATING SYSTEM

The written framework for resiliency and sustainability created by a joint collaboration:



<https://sustainableinfrastructure.org/envision-version-3/>

ENVISION AND ESCR

A framework that includes 64 sustainability and resilience indicators, called ‘credits’, organized around 5 categories:



Quality
Of Life

14 Credits



Leadership

12 Credits



Resource
Allocation

14 Credits



Natural
World

14 Credits



Climate and
Resilience

10 Credits

Project’s *Envision Pre-Assessment Checklist* Preliminary Results, conducted by PM/CM:

Credit Category	Applicable	Pre-Assessment Review	Percentage
Quality of Life	200	159	80%
Leadership	182	99	54%
Resource Allocation	196	25	13%
Natural World	194	64	33%
Climate and Resilience	146	121	83%
Total Points/%	918	468	51%

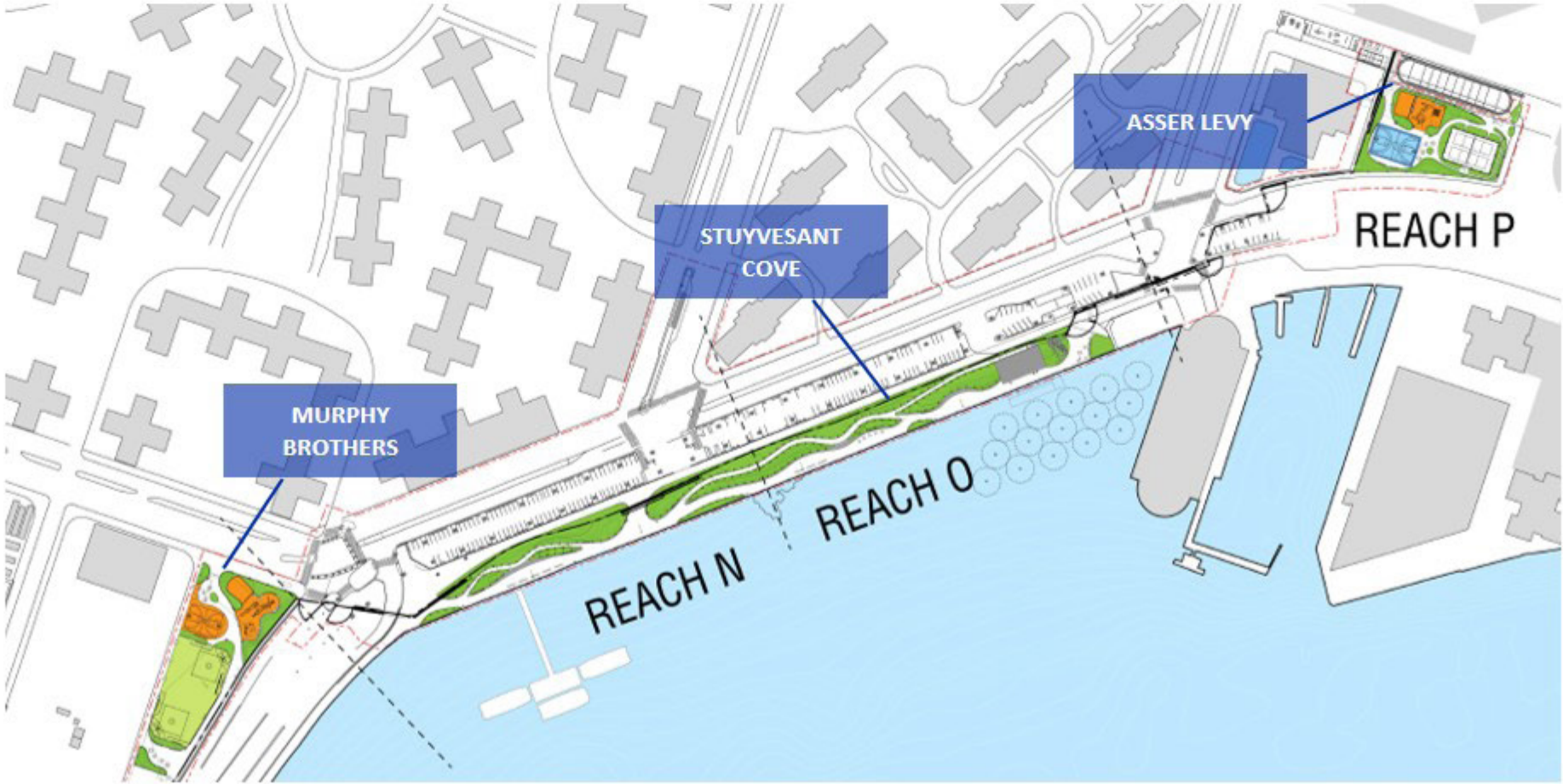
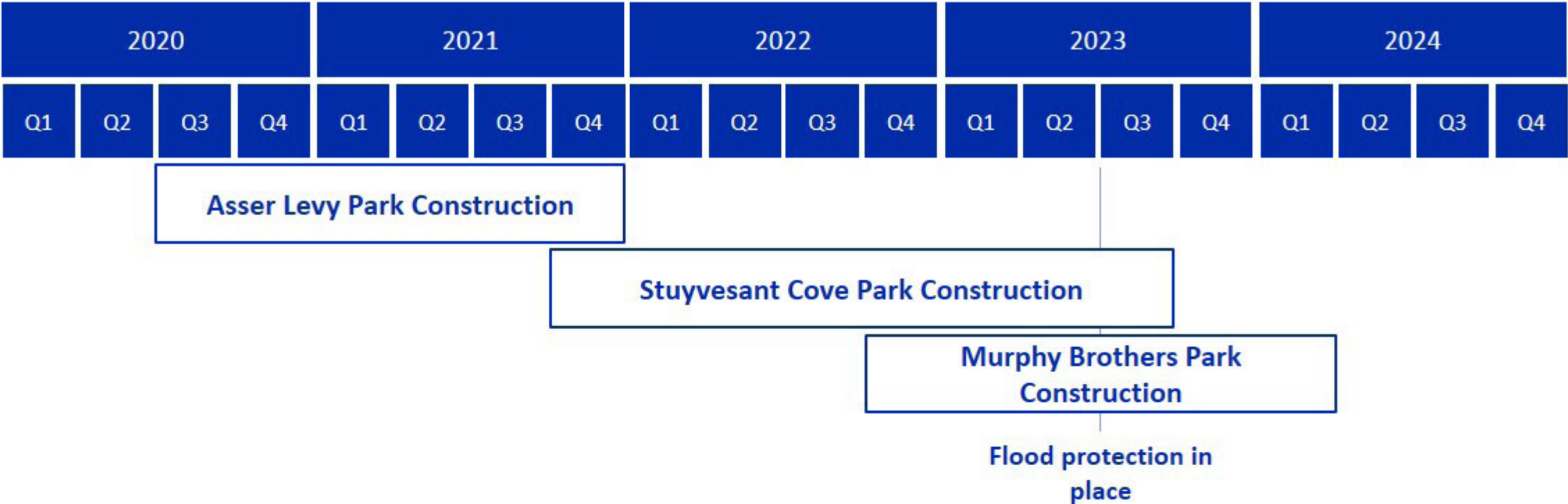


An aerial photograph of a city, likely New York City, showing a dense urban area with a large bridge crossing a body of water. The bridge has a suspension design. Along the waterfront, there are several green sports fields, including baseball diamonds and soccer fields. The image is overlaid with a semi-transparent teal filter. The text "PROJECT AREA 2" and "CONSTRUCTION PHASING" is centered in white, bold, sans-serif font.

PROJECT AREA 2 CONSTRUCTION PHASING

CONSTRUCTION PHASING FOR PROJECT AREA 2

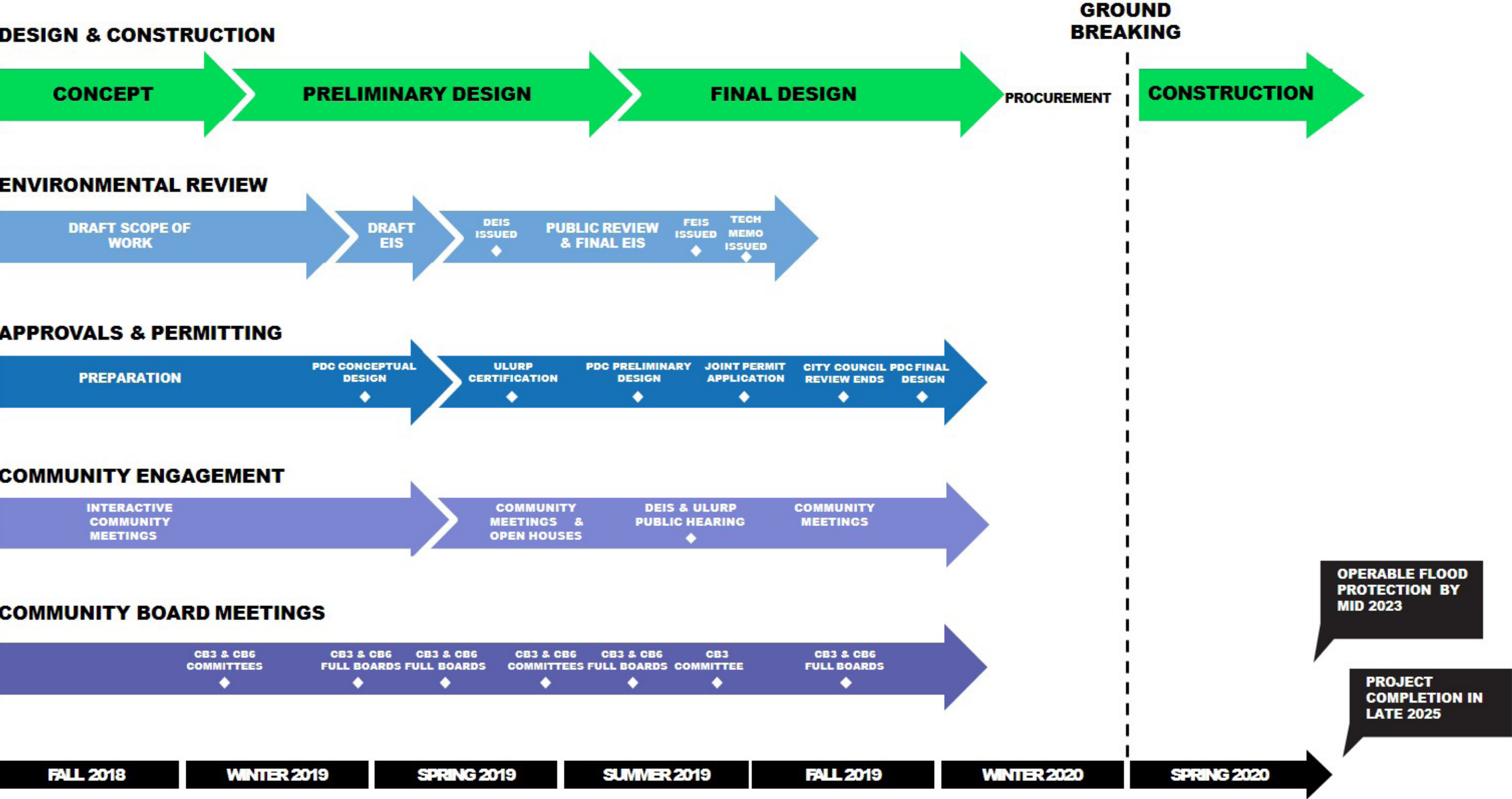
IN PROGRESS - DRAFT FOR DISCUSSION ONLY



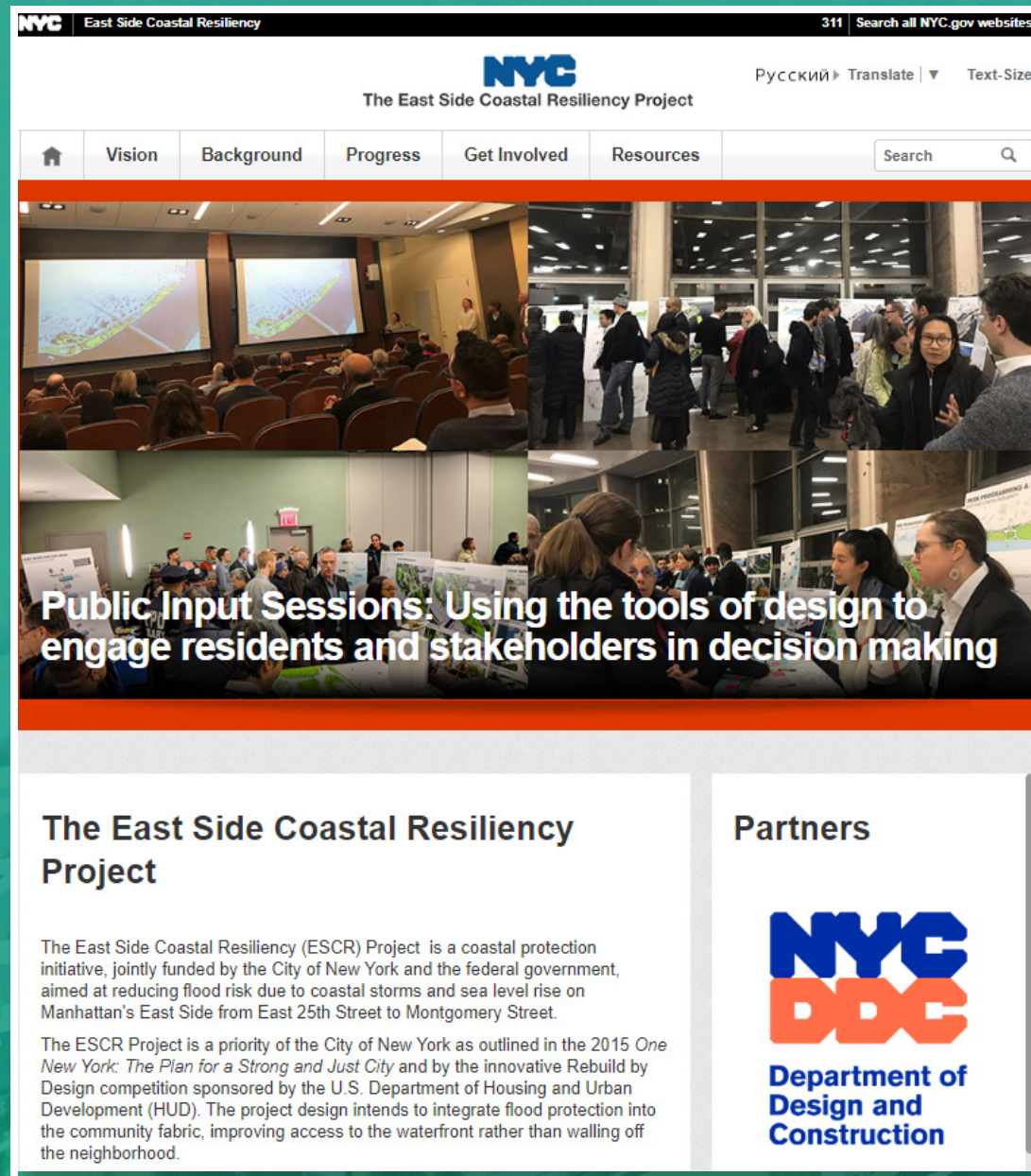
An aerial, isometric-style illustration of a cityscape. A large suspension bridge spans a body of water in the lower half of the image. Along the waterfront, there are several green sports fields, including baseball diamonds and soccer fields. The city is filled with numerous buildings of varying heights. The entire image has a teal/green color overlay.

PROJECT SCHEDULE

PROJECT SCHEDULE OVERVIEW



Website



Visit Us!
www.nyc.gov/escr
Twitter: @NYClimate