

# East Side Coastal Resiliency

Community Board 3  
Parks, Recreation, Waterfront & Resiliency  
Committee

30 Delancey Street  
(BRC Senior Services Center )

October 10, 2019





# **PRESENTATION AGENDA**

**PROJECT SCHEDULE & CONSTRUCTION PHASING**

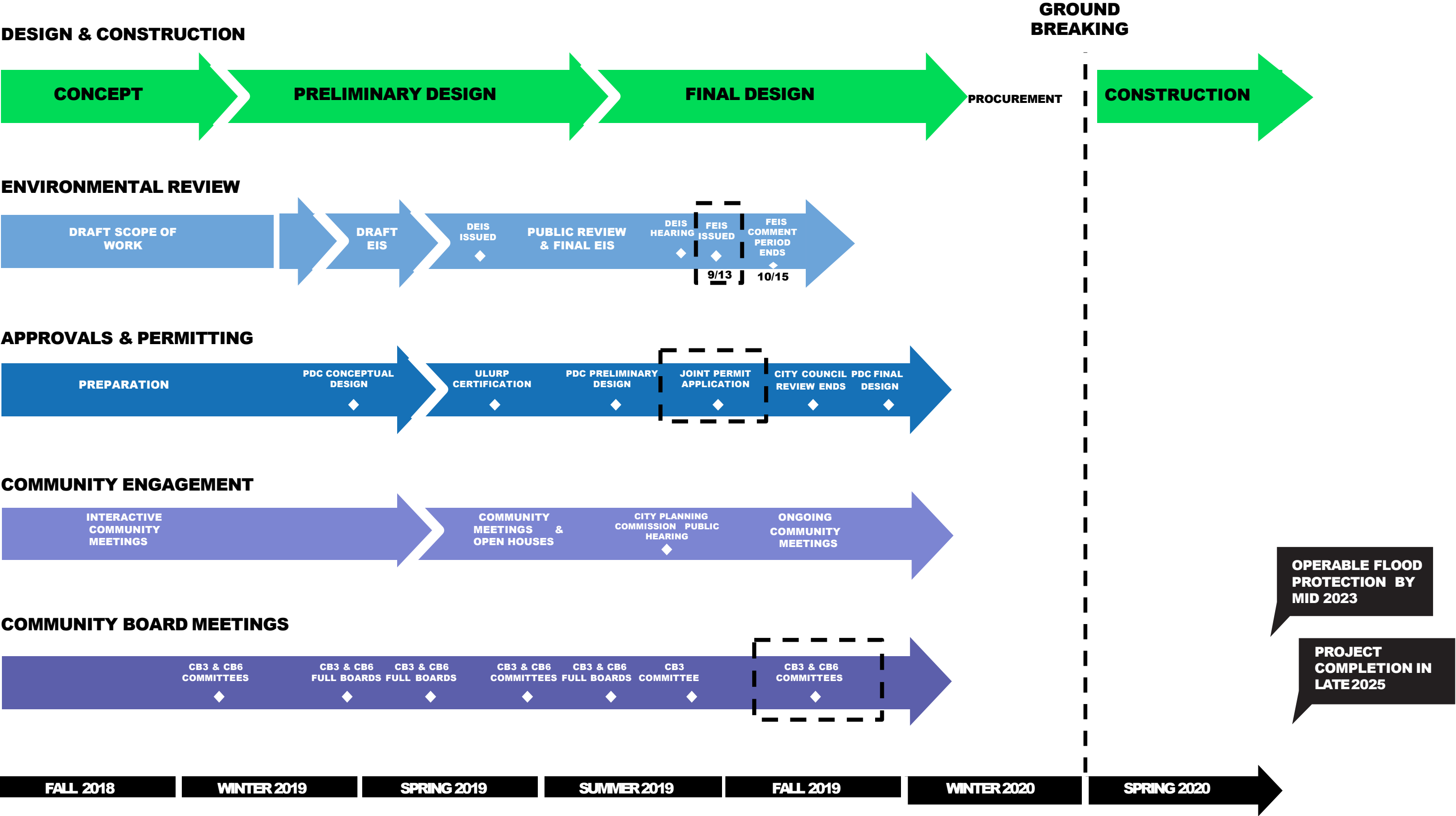
**AMPHITHEATER DESIGN UPDATE**

**SITE DESIGN UPDATE**

An aerial photograph of a city, likely New York City, showing a dense urban area with a large bridge crossing a body of water. The image is overlaid with a semi-transparent teal gradient. The text "PROJECT SCHEDULE & CONSTRUCTION PHASING" is centered in white, bold, sans-serif capital letters.

# **PROJECT SCHEDULE & CONSTRUCTION PHASING**

# PROJECT SCHEDULE OVERVIEW





# CONSTRUCTABILITY CONSIDERATIONS

**IN PROGRESS - DRAFT FOR DISCUSSION ONLY**

## East River Park Construction Phasing Drivers:

- Location of underground sewer infrastructure
- Fill settling time required
- Pedestrian and construction vehicle access
- Constructing temporary pathways, drainage, etc.

## Key Goals for Phasing:

- Complete flood protection structures by mid-2023
- Maximize public access to open space during construction





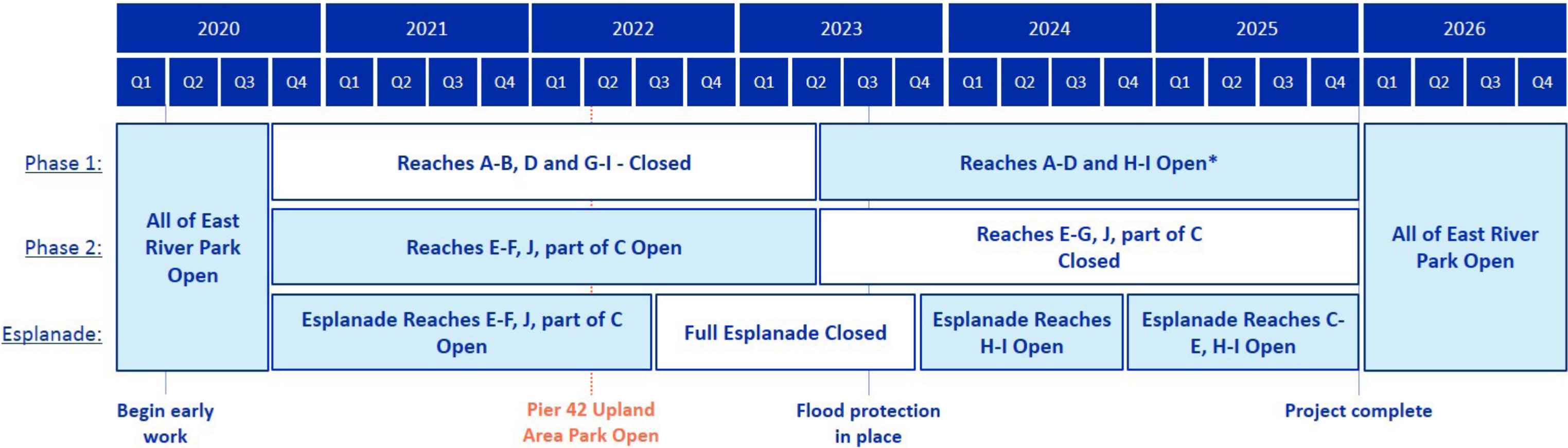
# UPDATED PHASING

NO FULL EAST RIVER PARK CLOSURE

IN PROGRESS - DRAFT FOR DISCUSSION ONLY

## Summary

- East River Park stays open for summer 2020, with some early construction packages beginning in March 2020
- 3/5 of East River Park will close in Fall 2020, while 2/5 remains open through summer 2022
- East River Park is never closed in its entirety (compared to 3.5 full years in baseline option)
- Esplanade is only fully closed for 1 year (compared to 3.5 full years in baseline option)
- 1/2 of East River Park will reopen in summer 2023
- Flood protection is completed in mid-2023, project completed at end of 2025



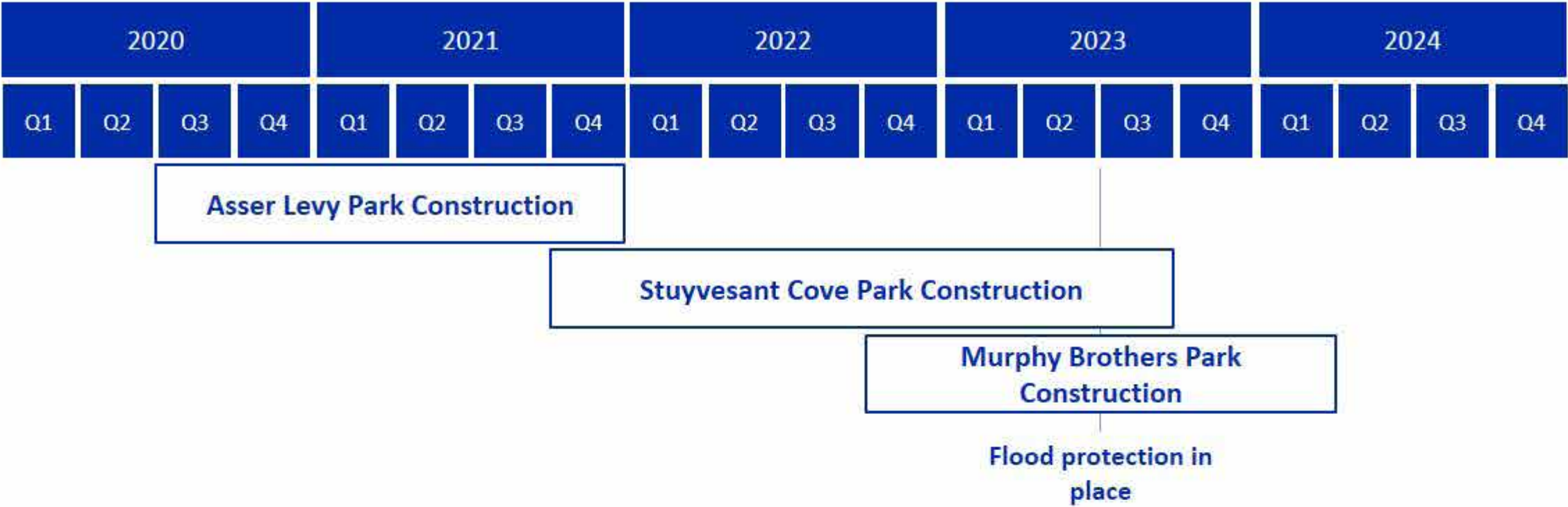
**Note:** Phasing analysis underway for other project components but are expected to fit within East River Park durations in all cases.

\*Construction in the Houston Street Area (Reach G) continues until end of 2025. Within reopened reaches, esplanade to be closed to facilitate access and staging, and some landscaping components will remain to be completed in passive recreational areas.



# CONSTRUCTION PHASING FOR PROJECT AREA 2

IN PROGRESS - DRAFT FOR DISCUSSION ONLY

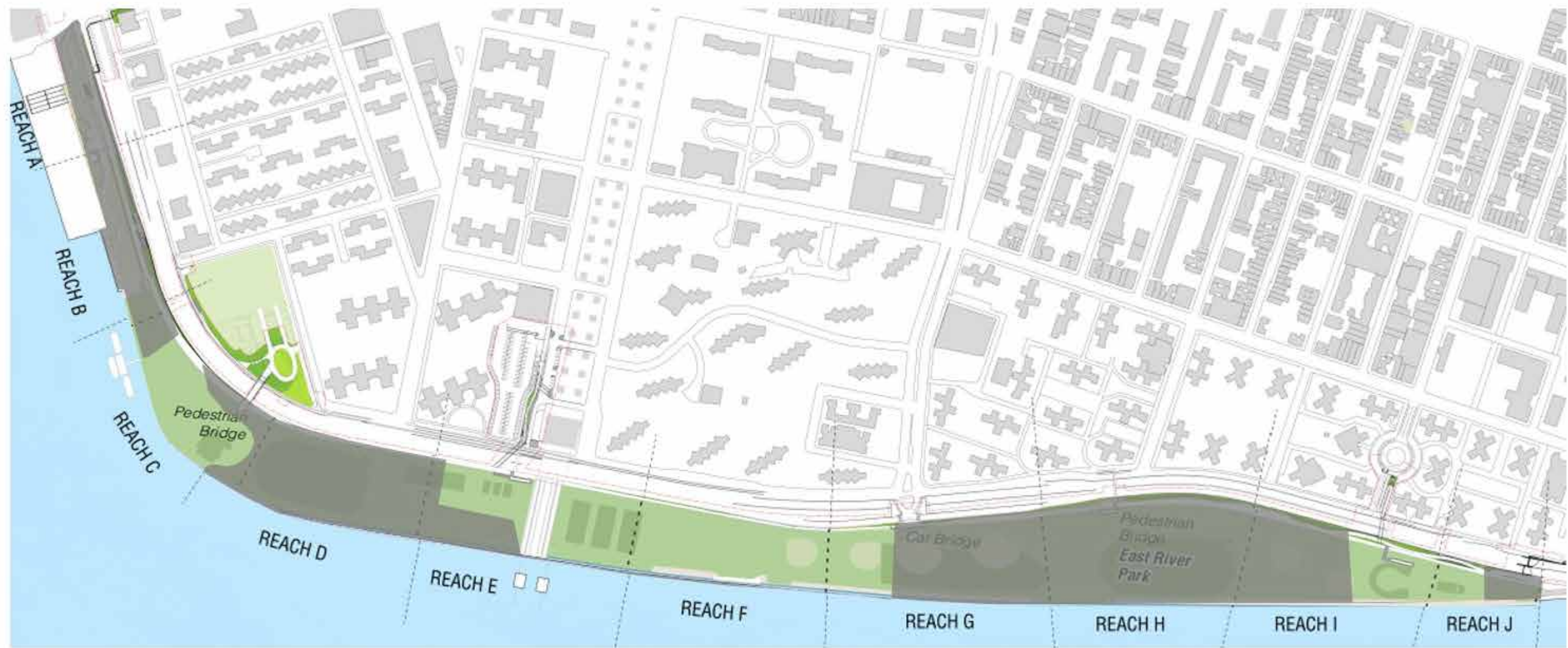




# CONSTRUCTION PHASING FOR EAST RIVER PARK

SUMMER 2021

IN PROGRESS - DRAFT FOR DISCUSSION ONLY



Closed Portions

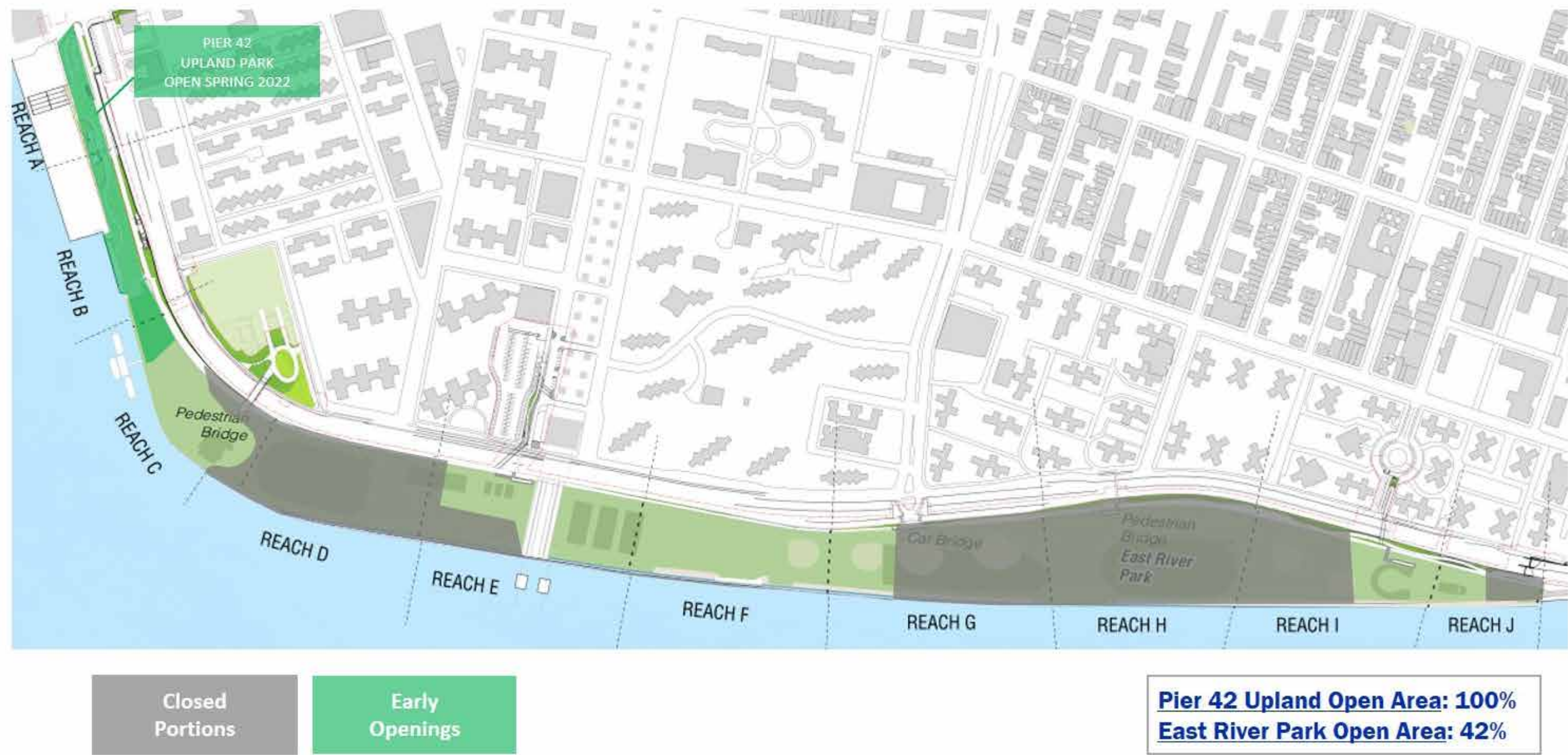
East River Park Open Area: 42%



# CONSTRUCTION PHASING FOR EAST RIVER PARK

SUMMER 2022

IN PROGRESS - DRAFT FOR DISCUSSION ONLY

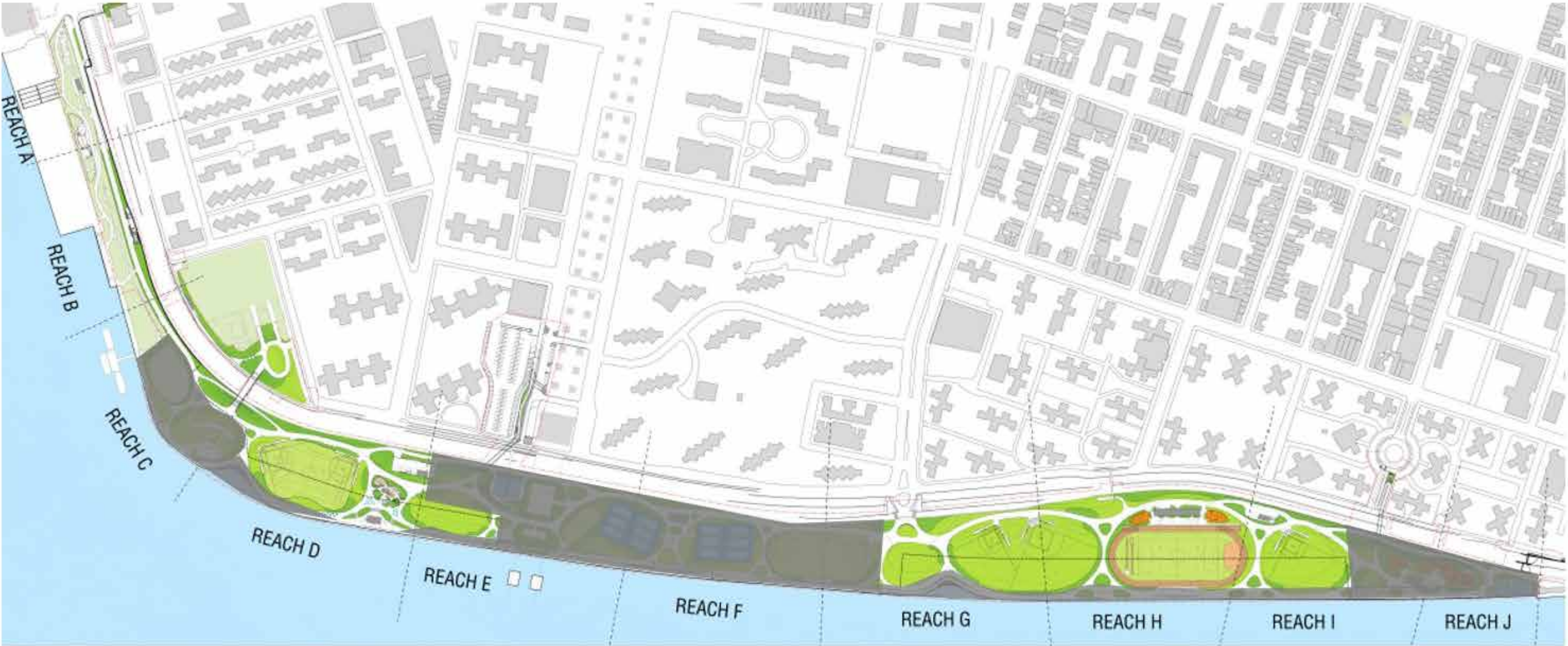




# CONSTRUCTION PHASING FOR EAST RIVER PARK

SUMMER 2023

IN PROGRESS - DRAFT FOR DISCUSSION ONLY



Closed  
Portions

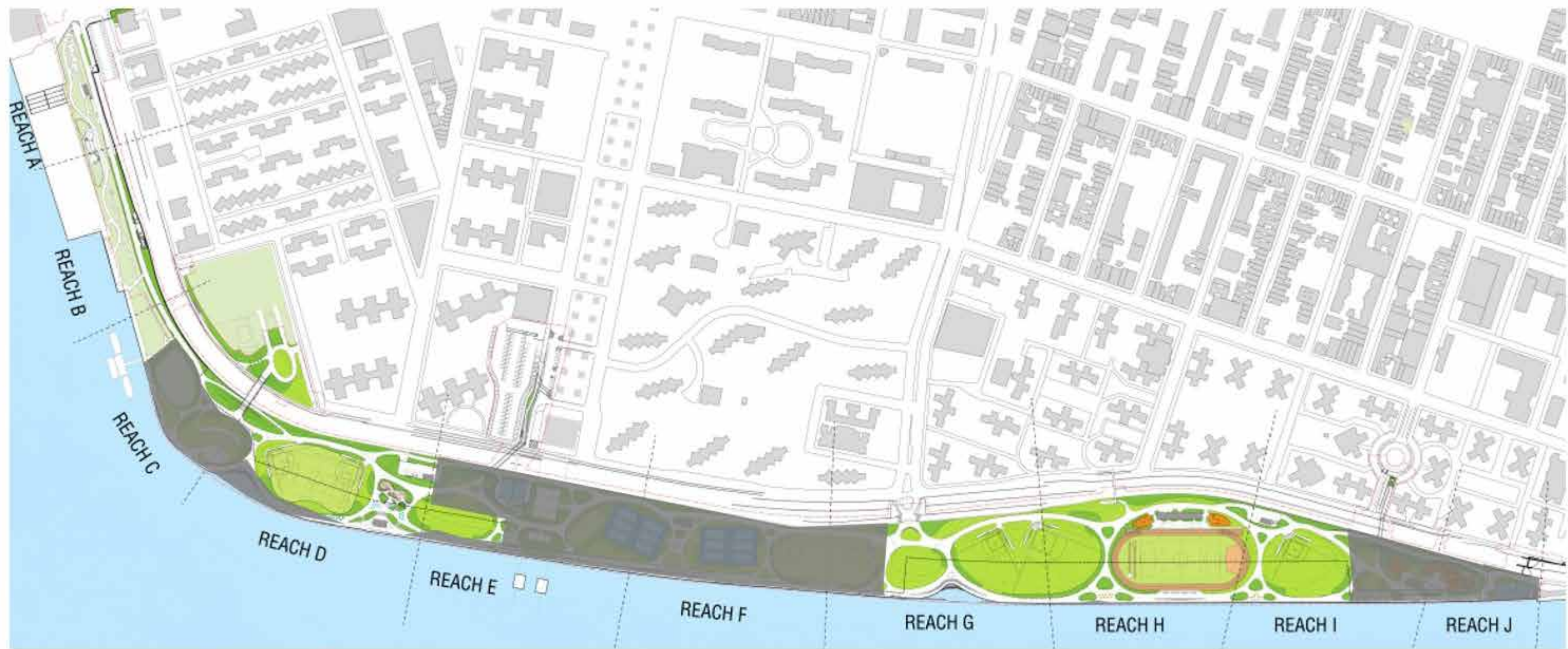
Pier 42 Upland Open Area: 100%  
East River Park Open Area: 53%



# CONSTRUCTION PHASING FOR EAST RIVER PARK

SUMMER 2024

IN PROGRESS - DRAFT FOR DISCUSSION ONLY



Closed  
Portions

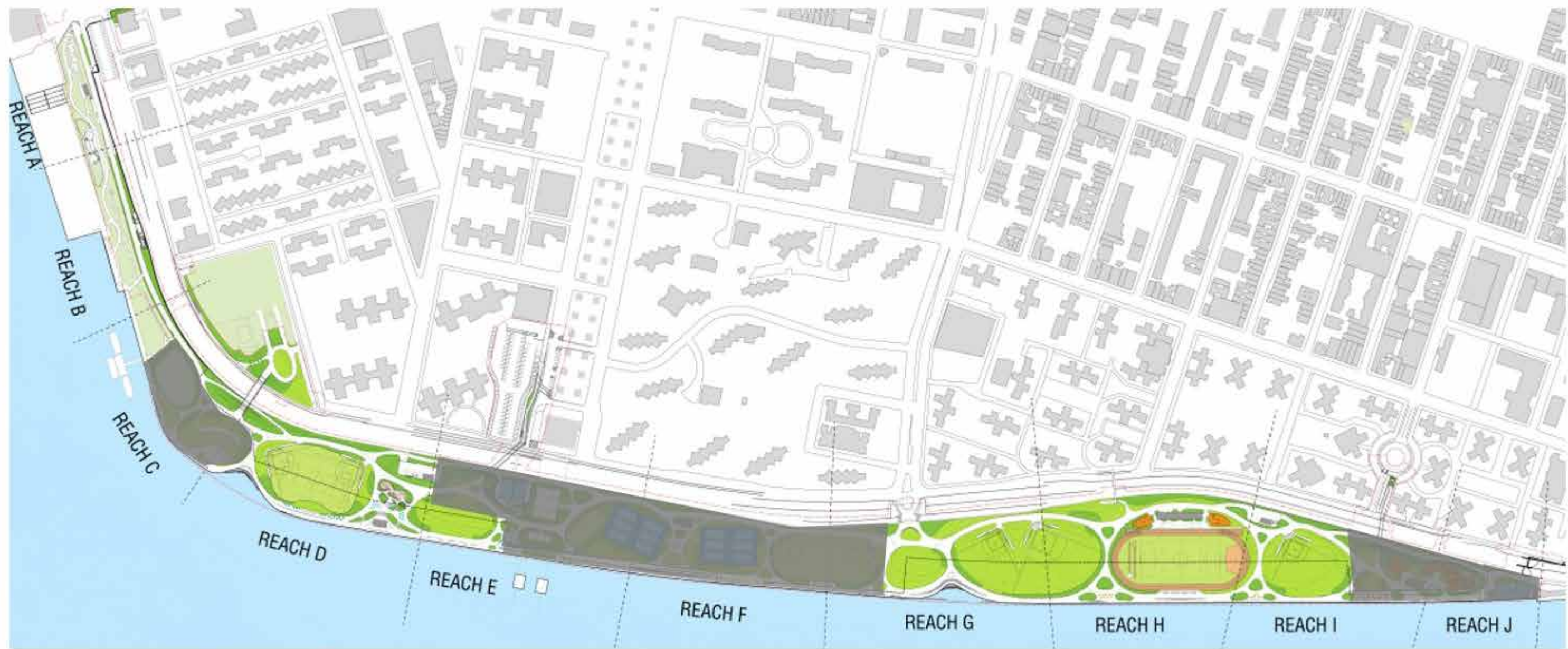
Pier 42 Upland Open Area: 100%  
East River Park Open Area: 55%



# CONSTRUCTION PHASING FOR EAST RIVER PARK

SUMMER 2025

IN PROGRESS - DRAFT FOR DISCUSSION ONLY



Closed  
Portions

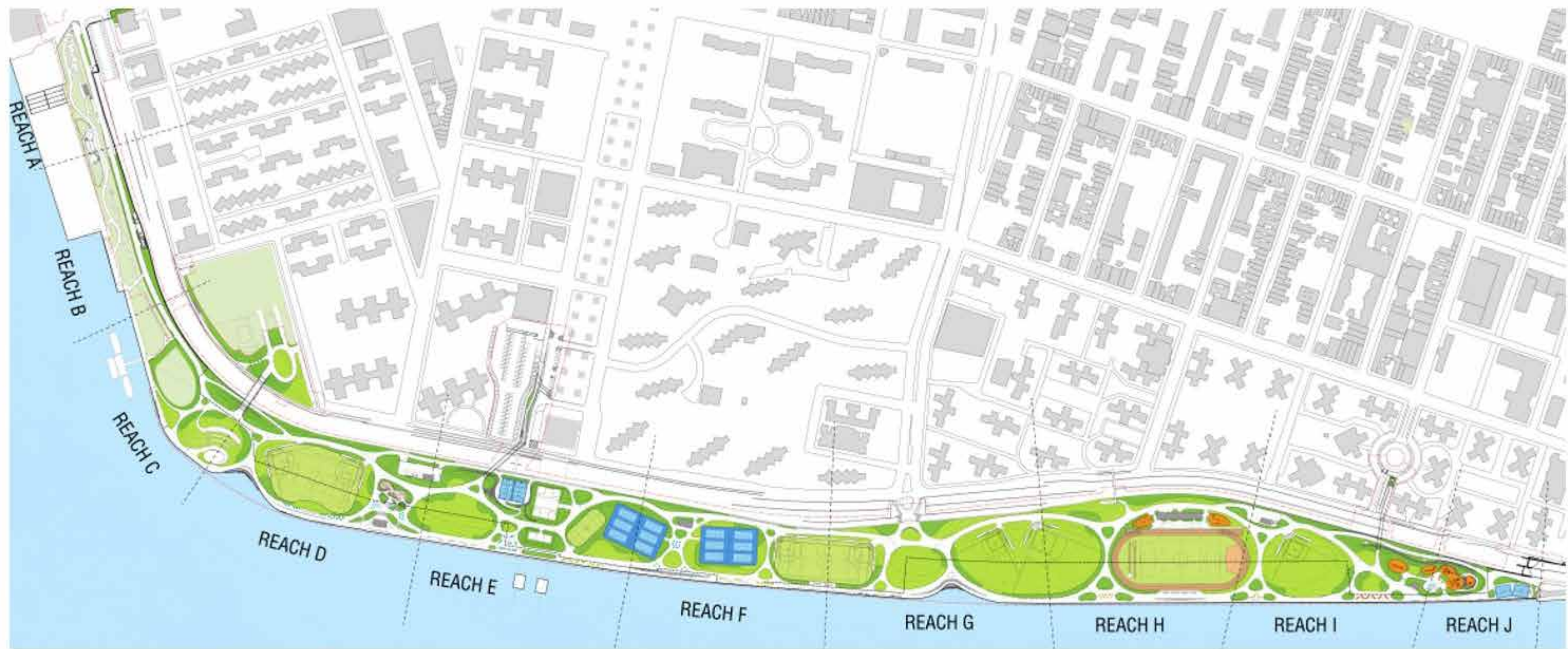
Pier 42 Upland Open Area: 100%  
East River Park Open Area: 56%



# CONSTRUCTION PHASING FOR EAST RIVER PARK

END OF 2025

IN PROGRESS - DRAFT FOR DISCUSSION ONLY



**Pier 42 Upland Open Area: 100%**  
**East River Park Open Area: 100%**



An aerial photograph of a city, likely New York City, showing a dense urban landscape with numerous buildings. A large river, the Hudson River, flows through the scene, and a prominent suspension bridge, the Hell Gate Bridge, spans across it. The image is overlaid with a semi-transparent teal filter. In the foreground, there are green spaces and what appears to be a park area. The text "AMPHITHEATER DESIGN UPDATE" is centered over the image in a bold, white, sans-serif font.

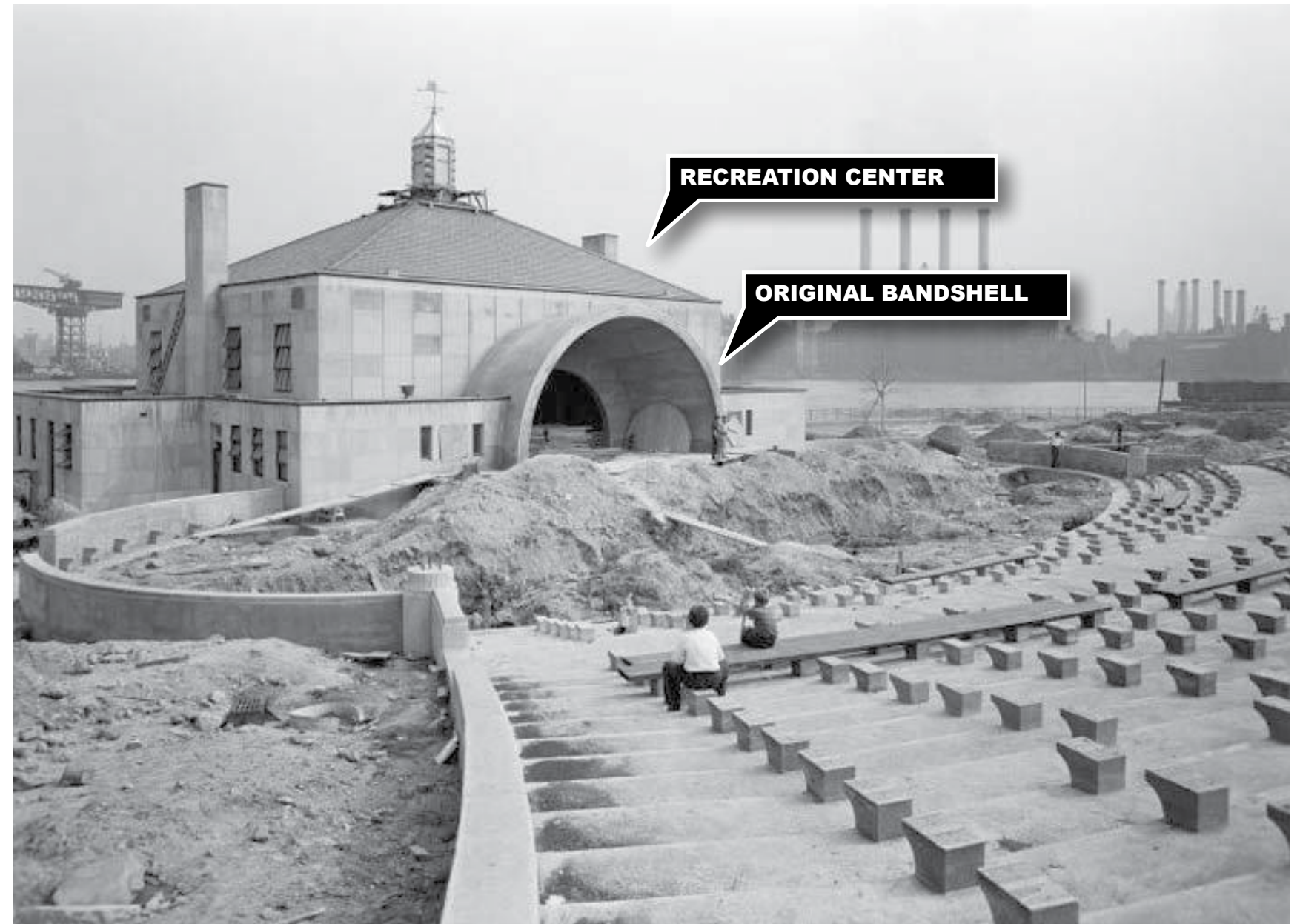
# **AMPHITHEATER DESIGN UPDATE**



# SITE HISTORY

1940's - 1990's

- Built in 1941
- Site of the City's first Shakespeare-in-the-Park series during the 1950s.
- Used for local ceremonies, music and theater events, and school graduations
- Original recreation building and amphitheater deteriorated over time and closed in 1980's



ORIGINAL EAST RIVER PARK AMPHITHEATER & RECREATION CENTER, 1941



# SITE HISTORY

2001 - PRESENT

- Amphitheater was restored by city in 2001 as part of efforts to revitalize lower Manhattan
- Recreation building was removed, leaving open view through bandshell to river
- Metal canopy structure added
- Current amphitheater is the site of concerts, music events, dance events, and community celebrations

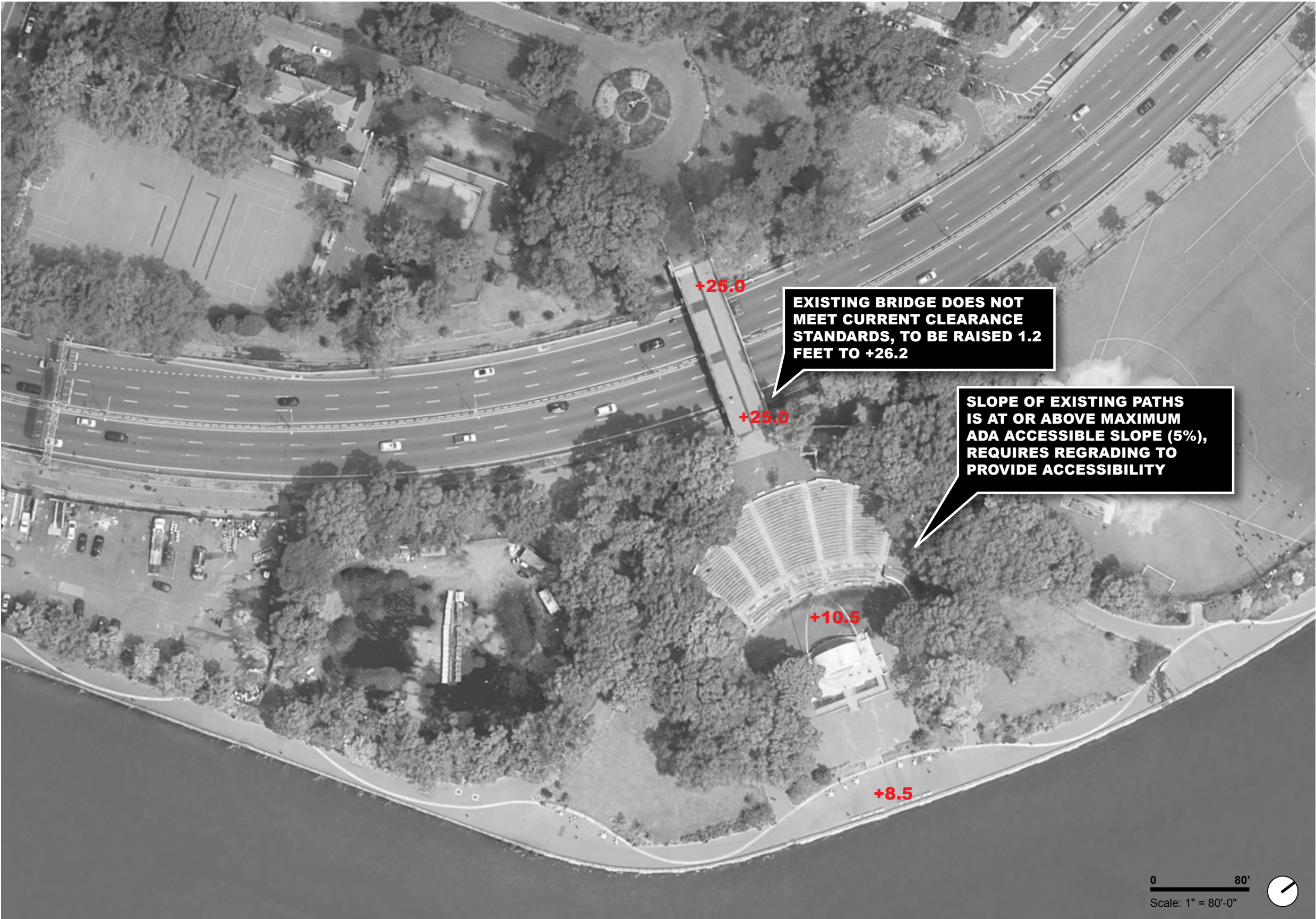


AMPHITHEATER TODAY



# EXISTING CONDITION ANALYSIS

## CORLEARS HOOK BRIDGE CONDITION



**+25.0** = EXISTING GRADE

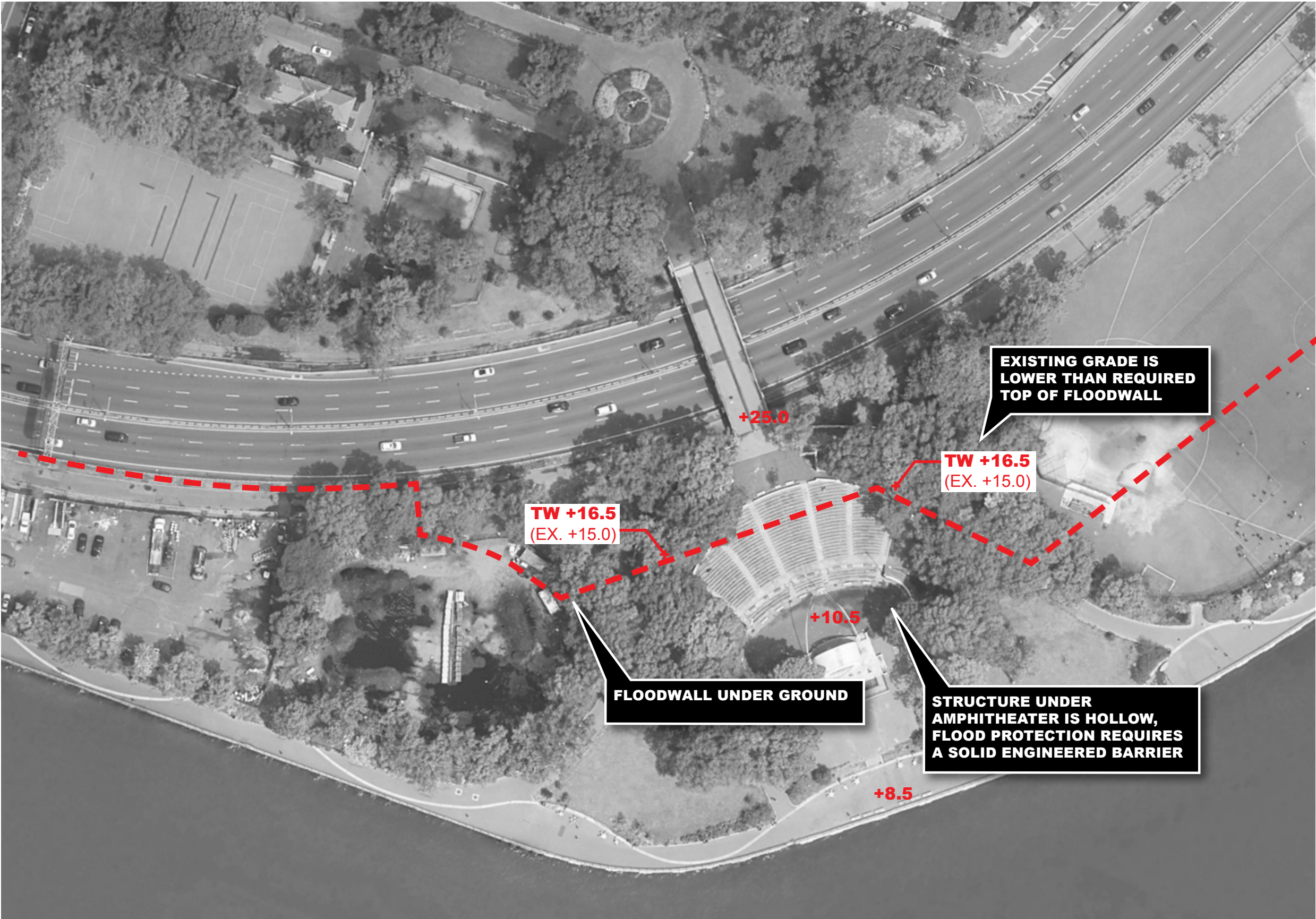


# EXISTING CONDITION ANALYSIS

## FLOOD PROTECTION

### LEGEND

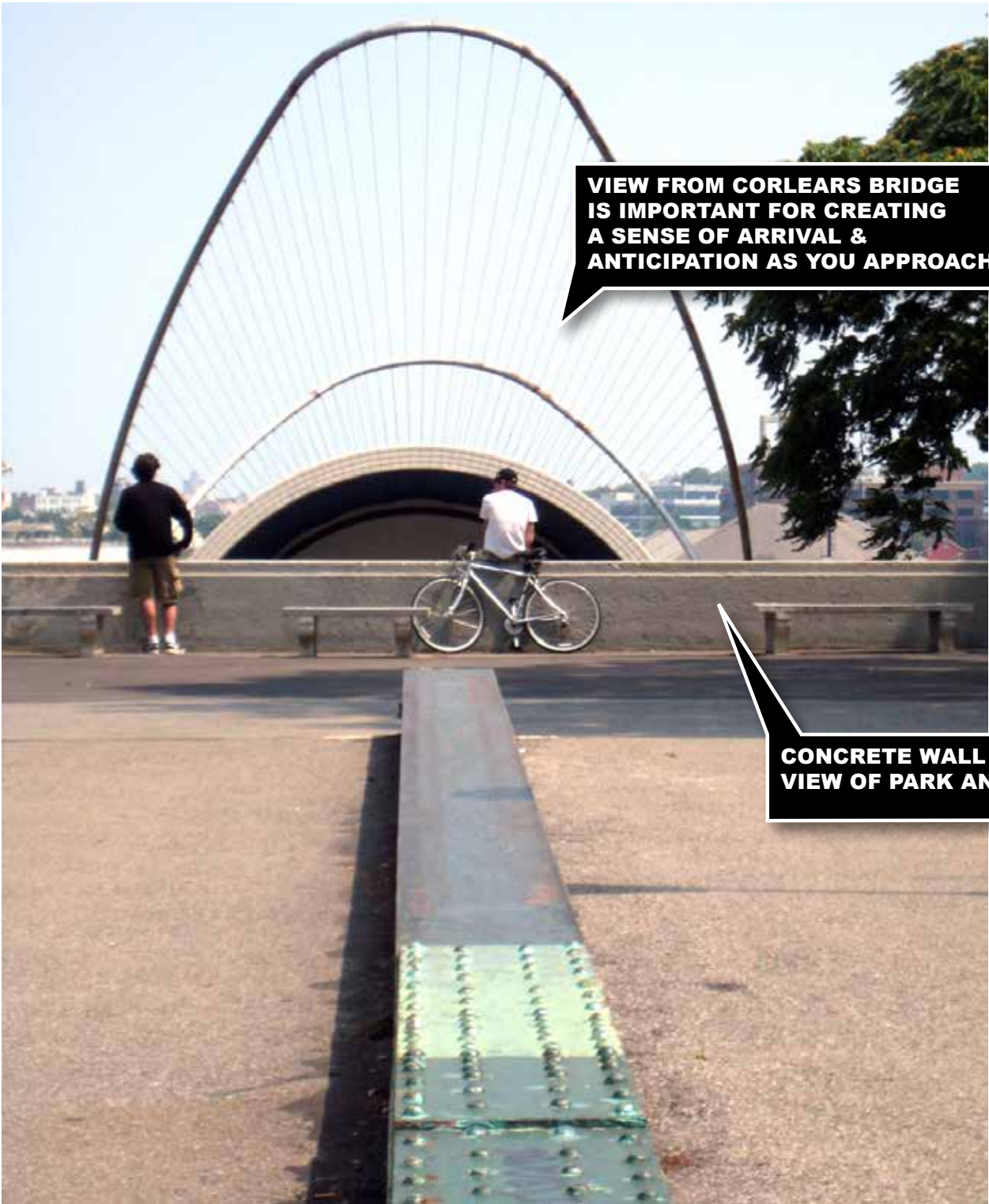
--- PROPOSED  
FLOODWALL





# EXISTING CONDITION ANALYSIS

AMPHITHEATER





# EXISTING CONDITION ANALYSIS

## AMPHITHEATER





# WHAT WE HEARD & DESIGN UPDATES

- **SEATING AND ACCESSIBILITY**
- **CAPACITY**
- **ACOUSTICS**
- **EVENT NEEDS: RESTROOMS**
- **EVENT NEEDS: POWER**
- **EVENT NEEDS: LOADING**
- **STAKEHOLDER COORDINATION**
- **SITE DESIGN UPDATES**
- **STRUCTURE**



# SITE DESIGN UPDATES

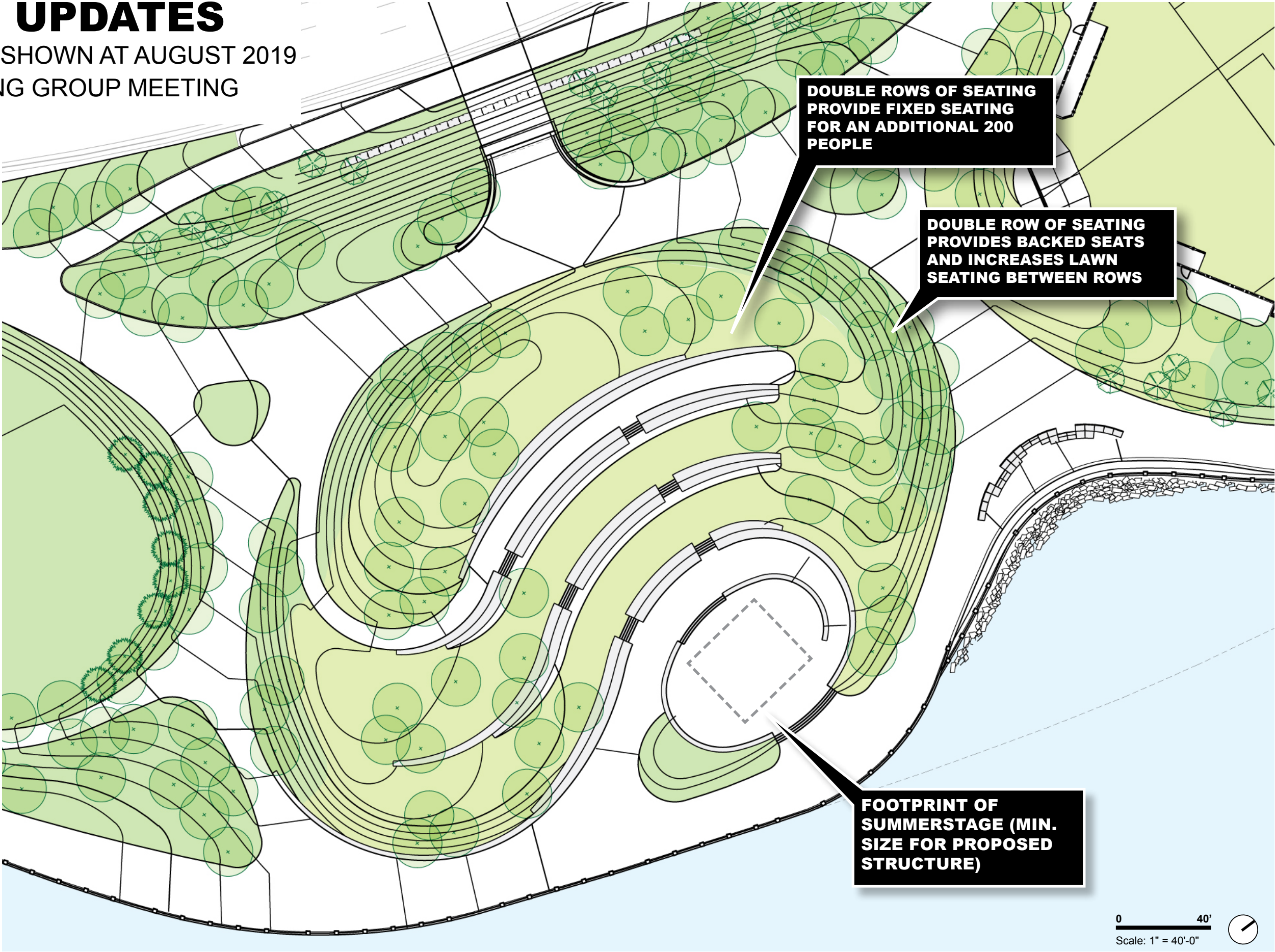
PREVIOUS DRAFT PLAN SHOWN AT MARCH 2019  
AMPHITHEATER WORKING GROUP MEETING





# SITE DESIGN UPDATES

PREVIOUS DRAFT PLAN SHOWN AT AUGUST 2019  
AMPHITHEATER WORKING GROUP MEETING





# SITE DESIGN UPDATES

CURRENT PROPOSED PLAN





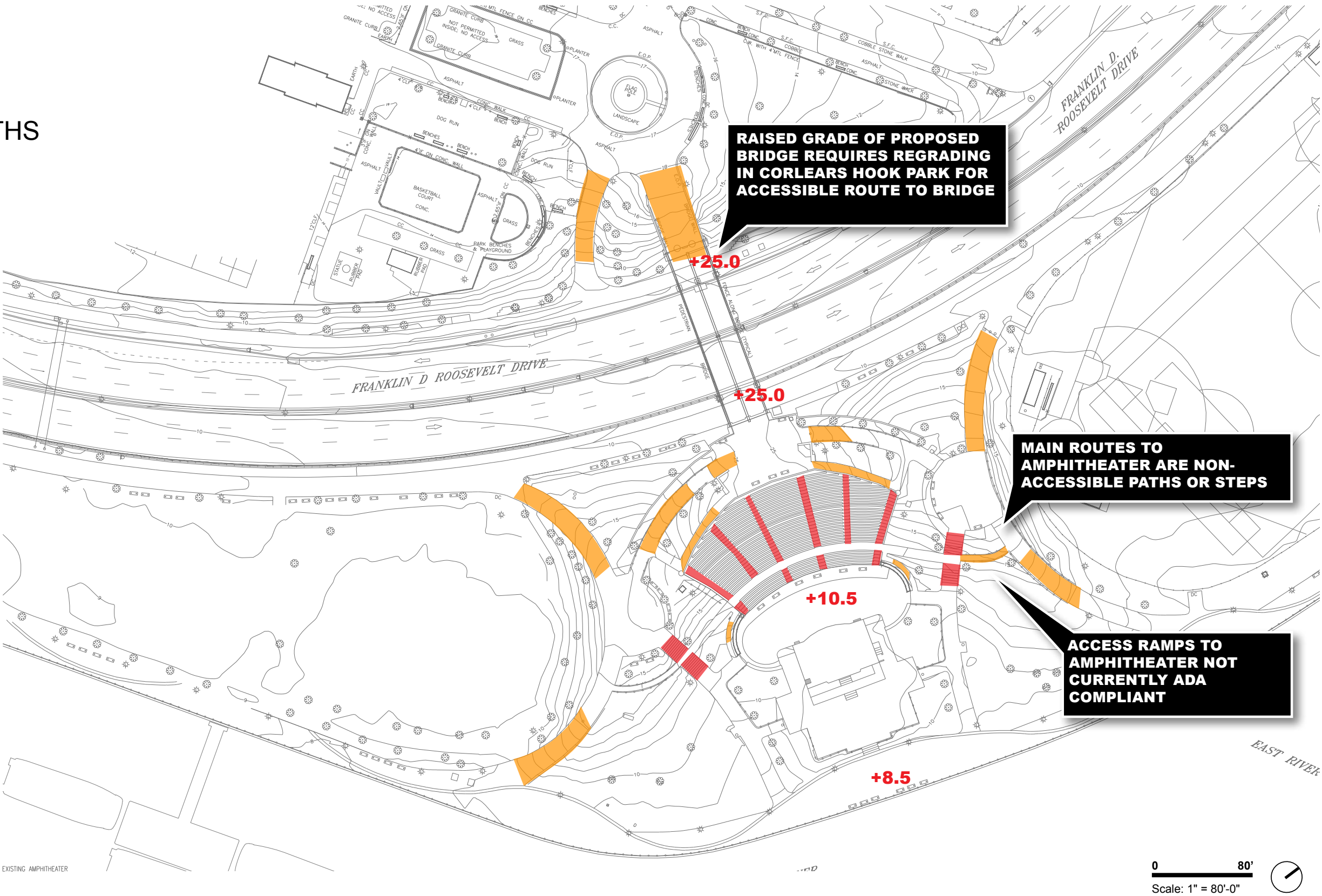
# SEATING AND ACCESSIBILITY

## EXISTING ACCESSIBILITY

### LEGEND

 NON-ADA ACCESSIBLE PATHS

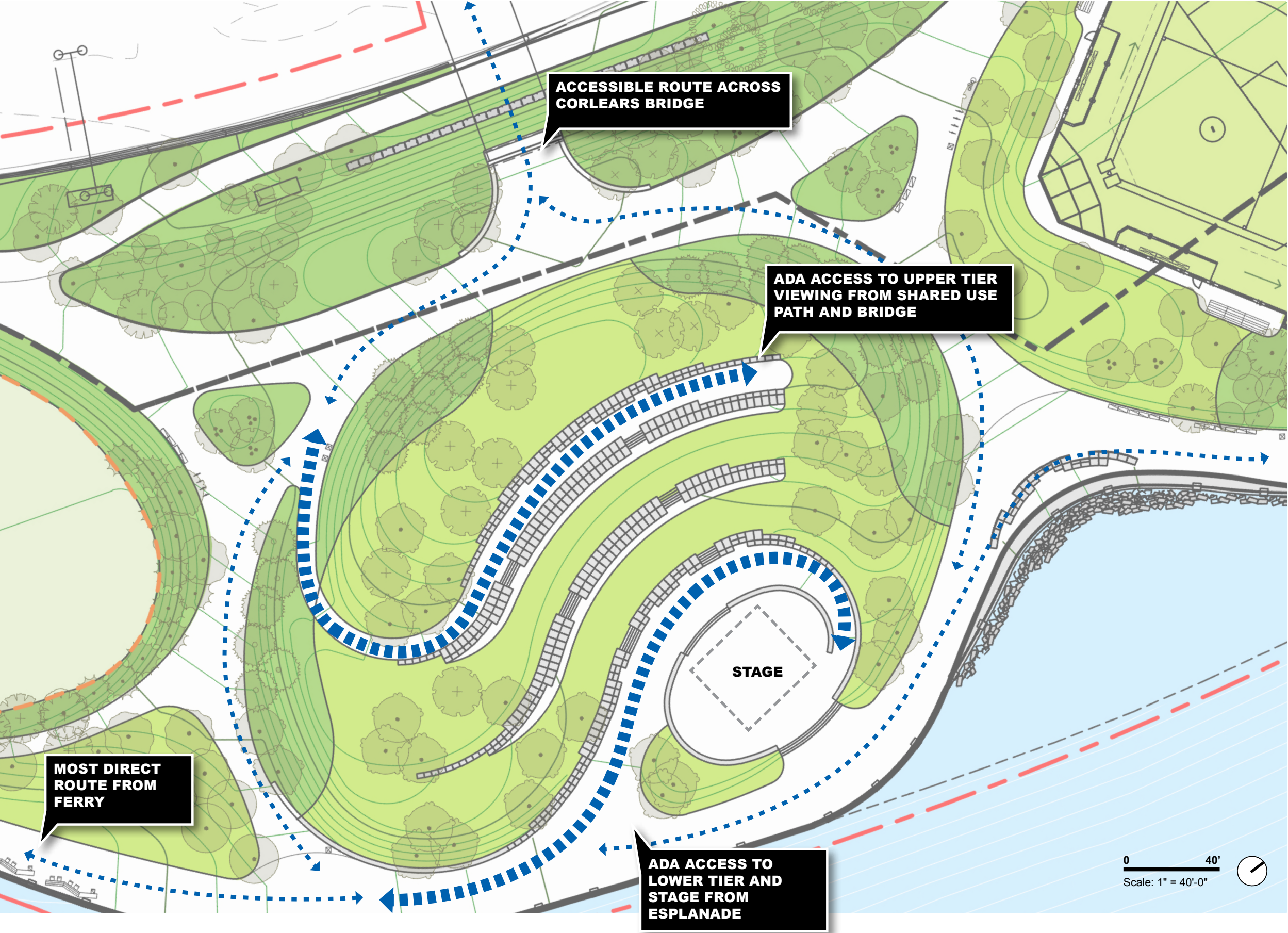
 STEPS





# SEATING AND ACCESSIBILITY

PROPOSED ACCESSIBILITY

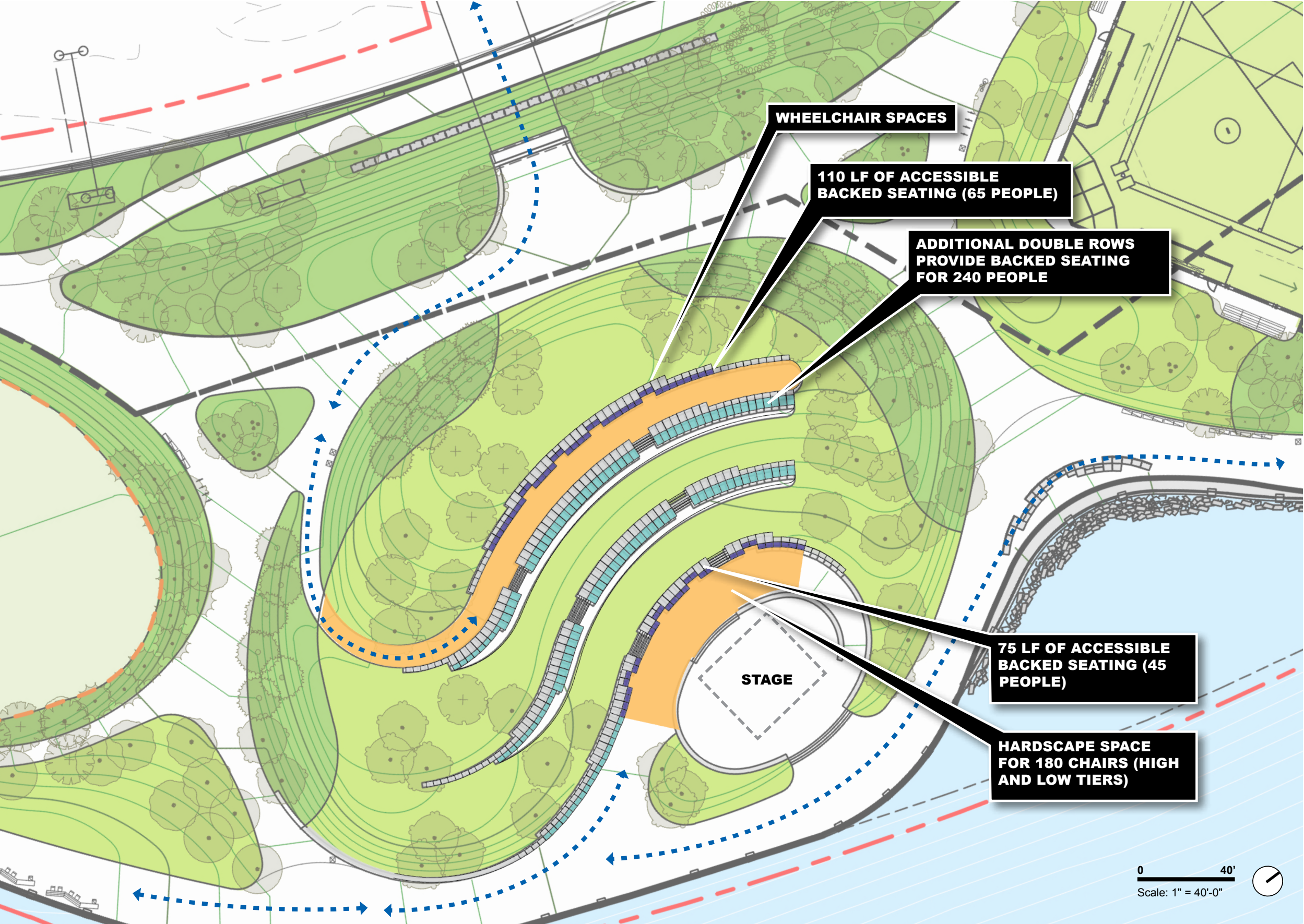


↔ accessible path



# SEATING AND ACCESSIBILITY

## BACKED SEATING





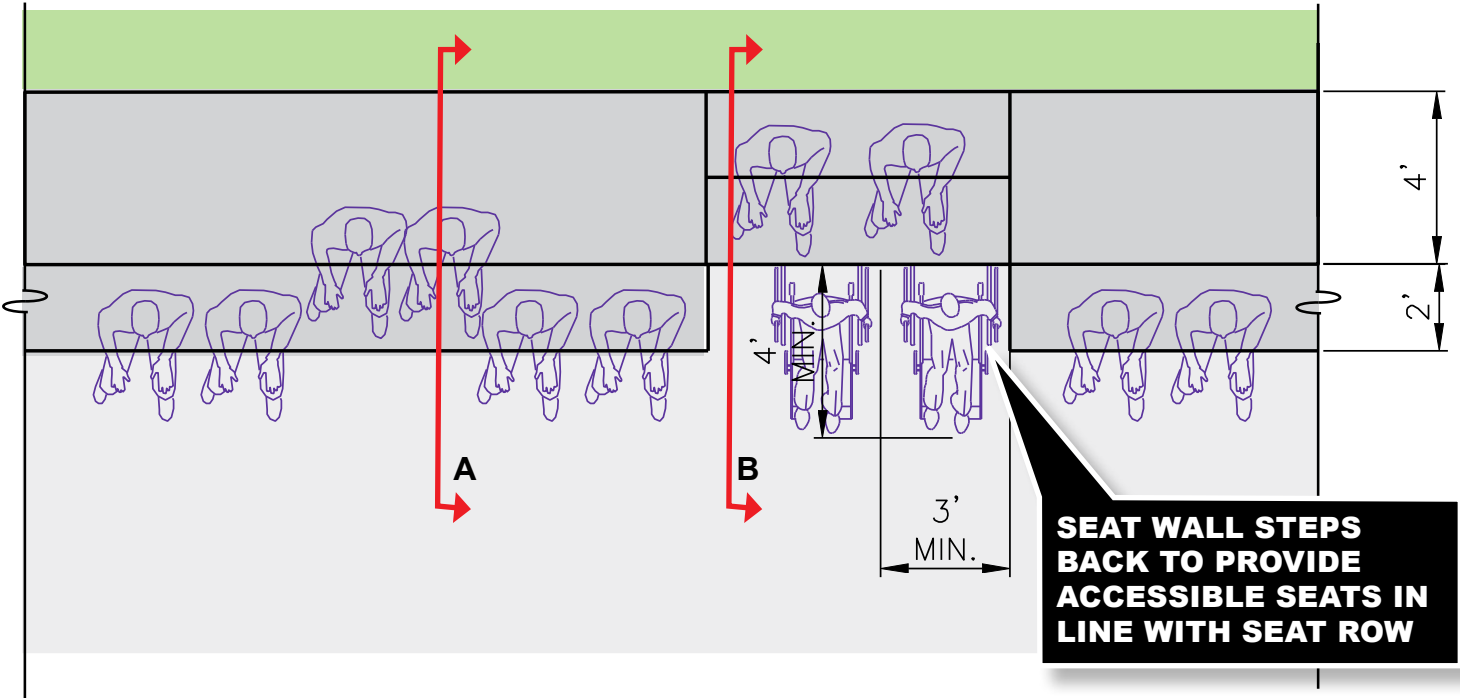
# SEATING AND ACCESSIBILITY

## BACKED SEATING

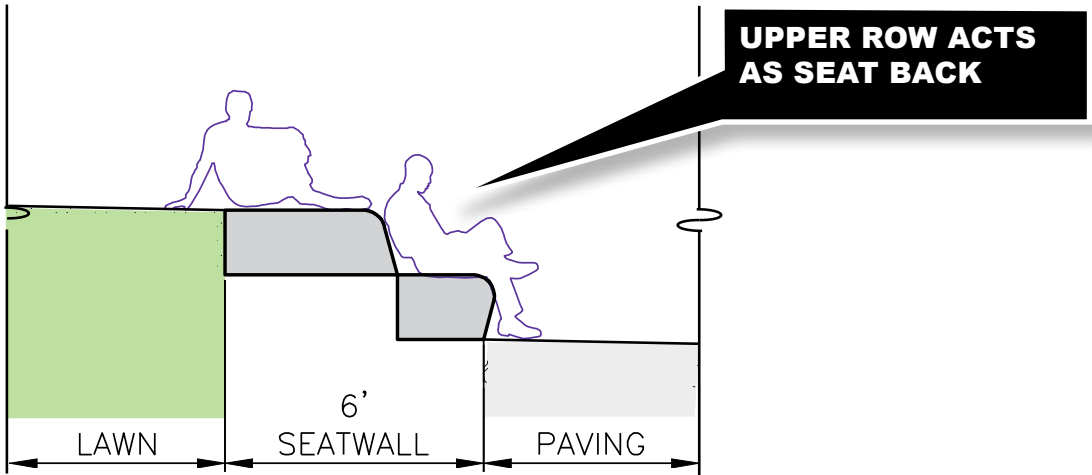
VIEW



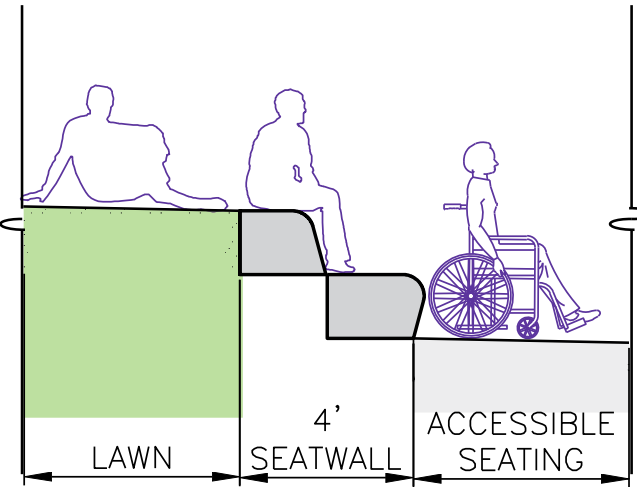
PLAN



SECTION A



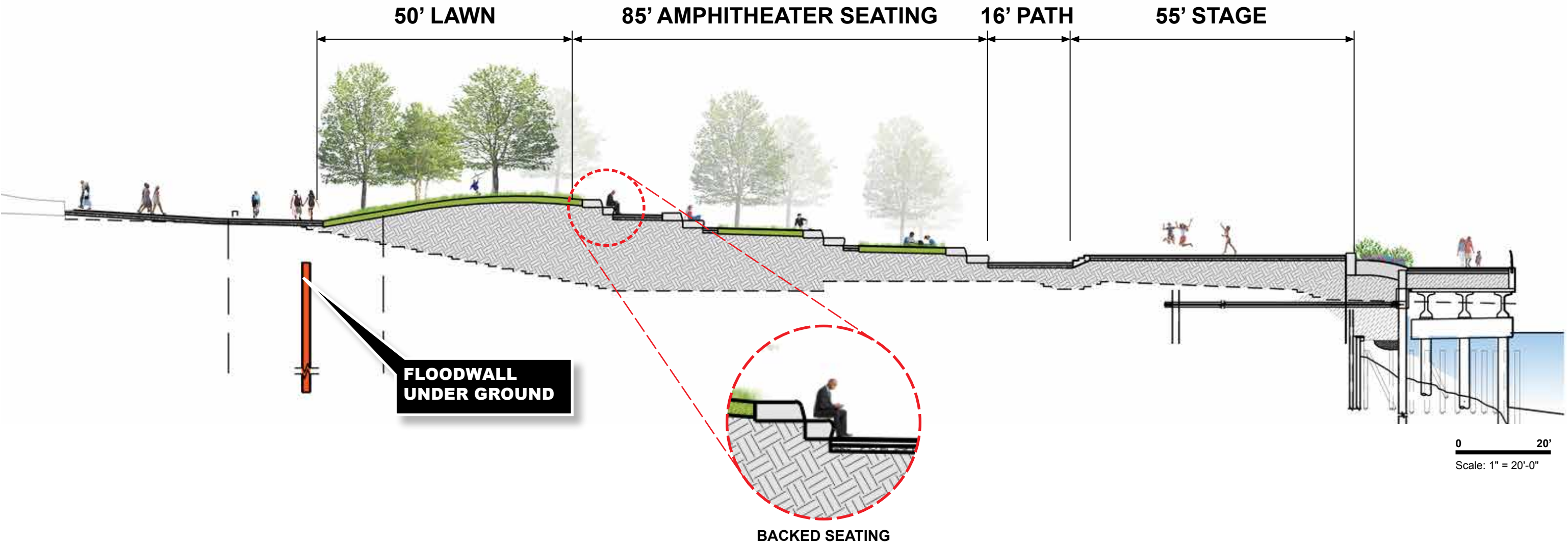
SECTION B





# SITE DESIGN UPDATES

PROPOSED SECTION

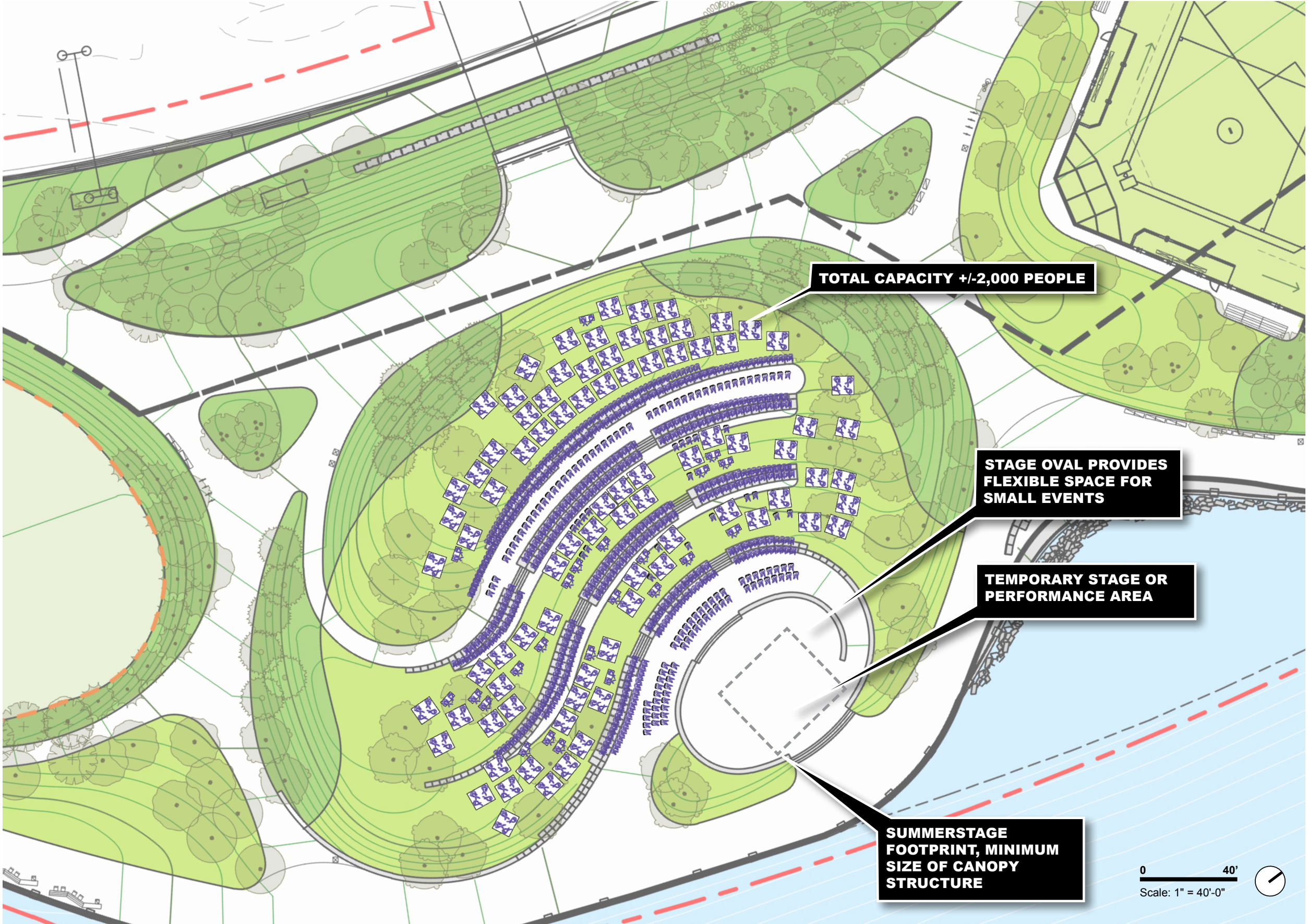




# CAPACITY

SUMMERSTAGE CONCERT, LARGE EVENTS

NOTE:  
TOTAL SIZE: +/-40,000 SF  
TOTAL CAPACITY: +/-2,000 PEOPLE  
LAWN CAPACITY: 1,070 PEOPLE  
FIXED SEATING CAPACITY: 750 PEOPLE  
HARDSCAPE CAPACITY = 180 PEOPLE





# CAPACITY

SUMMERSTAGE CONCERT, SMALL EVENTS





# ACOUSTICS

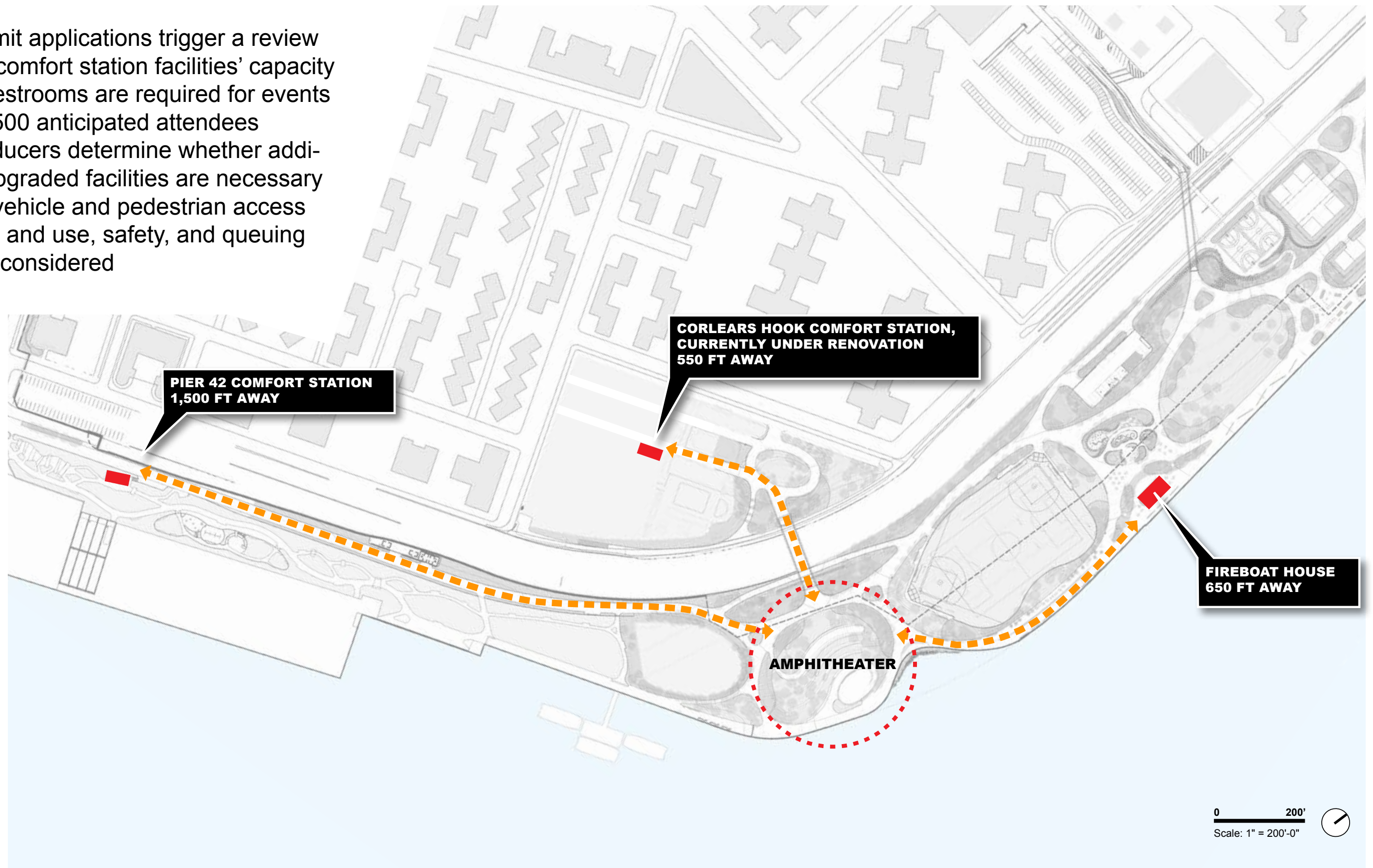
## AMPHITHEATER ACOUSTICAL STUDY STATUS

- Amphitheater Acoustical Noise Study Underway, including:
  - Baseline Amphitheater Noise Monitoring (Noise Measurements) were taken in May 2019 (with and without events occurring)
- Existing Condition Noise Model has been Created and Calibrated using existing noise measurements
- Noise Model representing proposed Amphitheater Design in progress
- Acoustical Study will evaluate viability and effectiveness of noise reduction measures, including:
  - Sound system restrictions
  - Time Restrictions
  - Physical Barriers
  - Acoustical treatments
- Noise Level Control Points with allowable maximum noise levels will be established to provide compliance criteria for enforcement



# RESTROOMS

- Large permit applications trigger a review of nearby comfort station facilities' capacity
- Portable restrooms are required for events with over 500 anticipated attendees
- Event producers determine whether additional or upgraded facilities are necessary
- Location, vehicle and pedestrian access for loading and use, safety, and queuing space are considered





# POWER

- 34" wide x 10" tall electrical cabinet mounted in amphitheater stage wall
- Accessible by permitted events, locked at other times

## PRECEDENT IMAGES





# **WHAT WE HEARD: STRUCTURE**

- **Existing amphitheater structure is important to community and park identity**
- **Structure provides a sense of arrival and anticipation crossing the Corlears Hook Bridge into the park**



# STRUCTURE

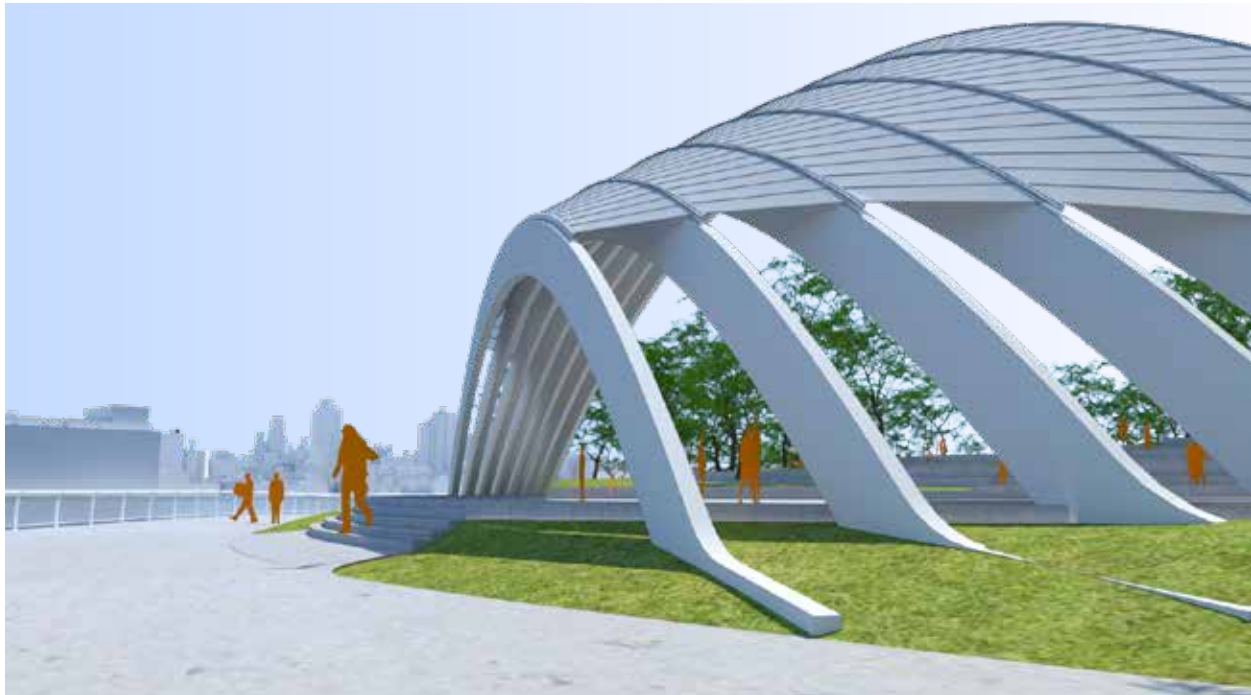
DRAFT PROPOSAL



VIEW FROM CORLEARS HOOK BRIDGE



VIEW FROM EMBAYMENT



VIEW FROM ESPLANADE

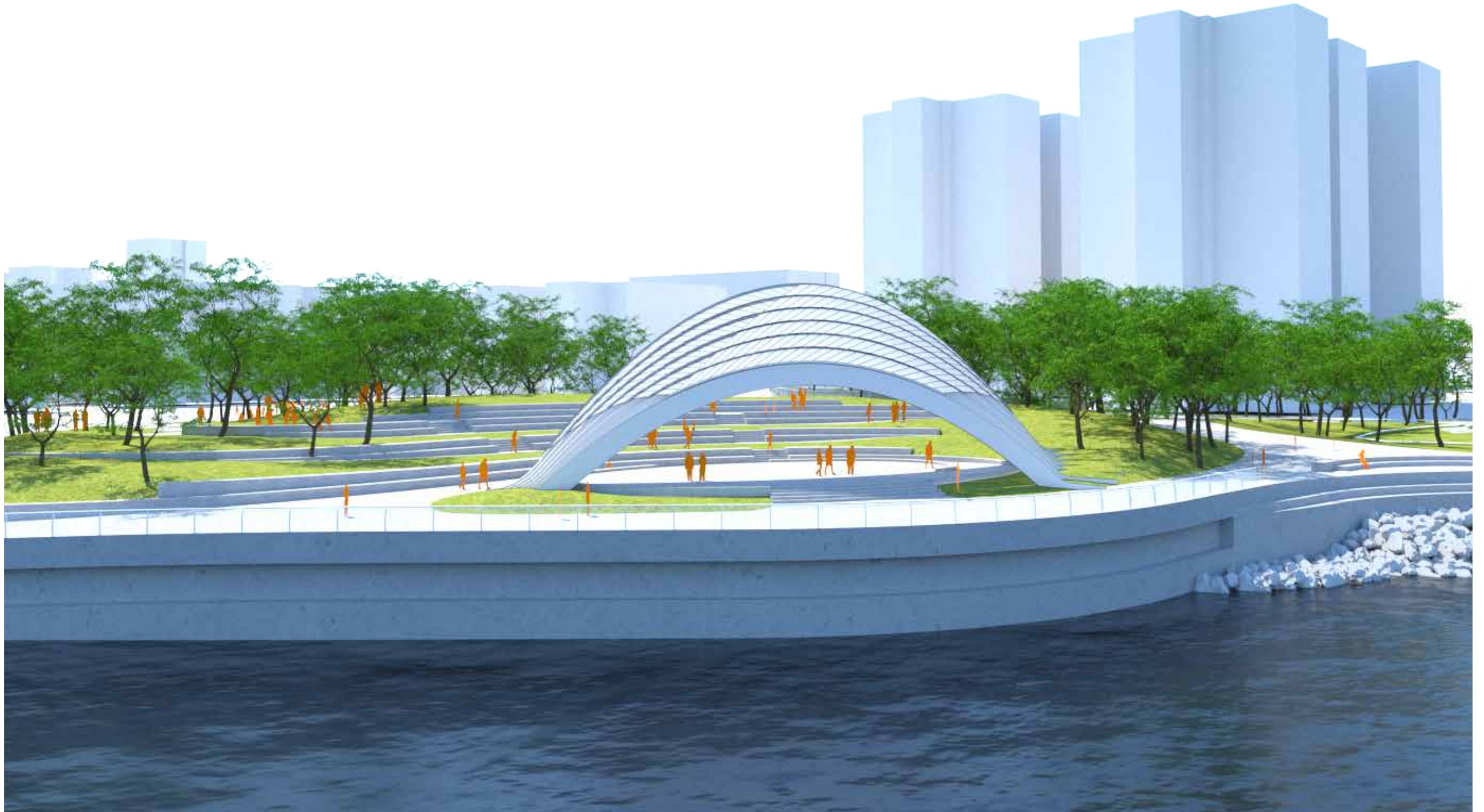


VIEW FROM OVERFLOW SEATING



# STRUCTURE

DRAFT PROPOSAL





An aerial photograph of a city, likely New York City, showing a dense urban grid, a large river (the Hudson River), and a suspension bridge (the Hell Gate Bridge). The image is overlaid with a semi-transparent teal gradient. In the foreground, there are green spaces, possibly parks or sports fields, and a road. The text "SITE DESIGN UPDATE" is centered in the middle of the image in a bold, white, sans-serif font.

# **SITE DESIGN UPDATE**



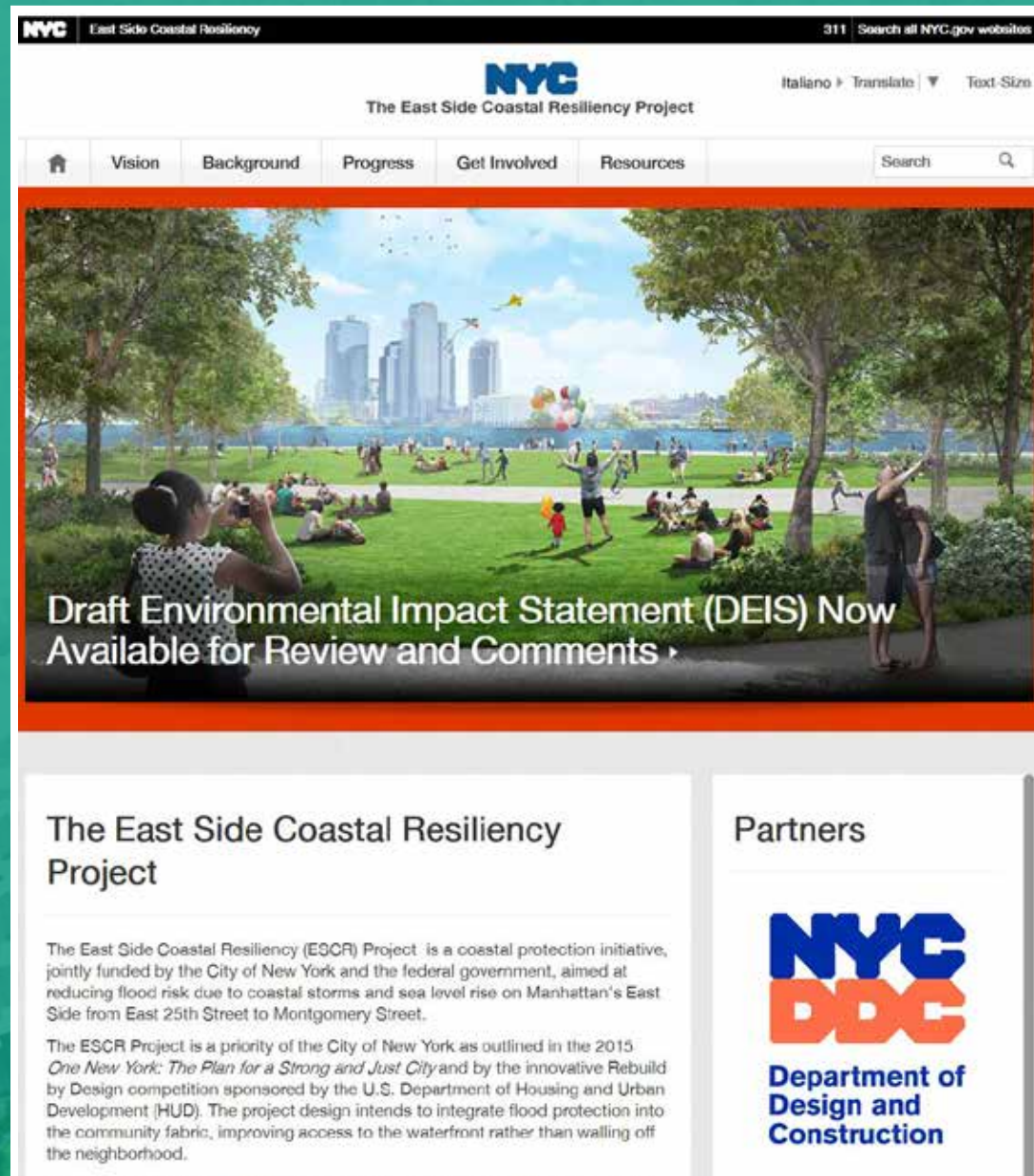
# ESPLANADE EMBAYMENT

CURRENT DESIGN





# Website



**Visit Us!**  
**[www.nyc.gov/escr](http://www.nyc.gov/escr)**  
Twitter: @NYClimate