

East Side Coastal Resiliency

New York City Council
Subcommittee on Landmarks,
Public Sitings and Dispositions

Council Chambers - City Hall

October 3, 2019



Mayor's Office of
Resiliency

PROJECT GOALS & ORIGIN

Provide a reliable, integrated flood protection system; minimize use of closure structures.

Improve waterfront open spaces and access.

Achieve implementation milestones and project funding allocations as established by HUD.

Respond quickly to the urgent need for increased flood protection and resiliency.

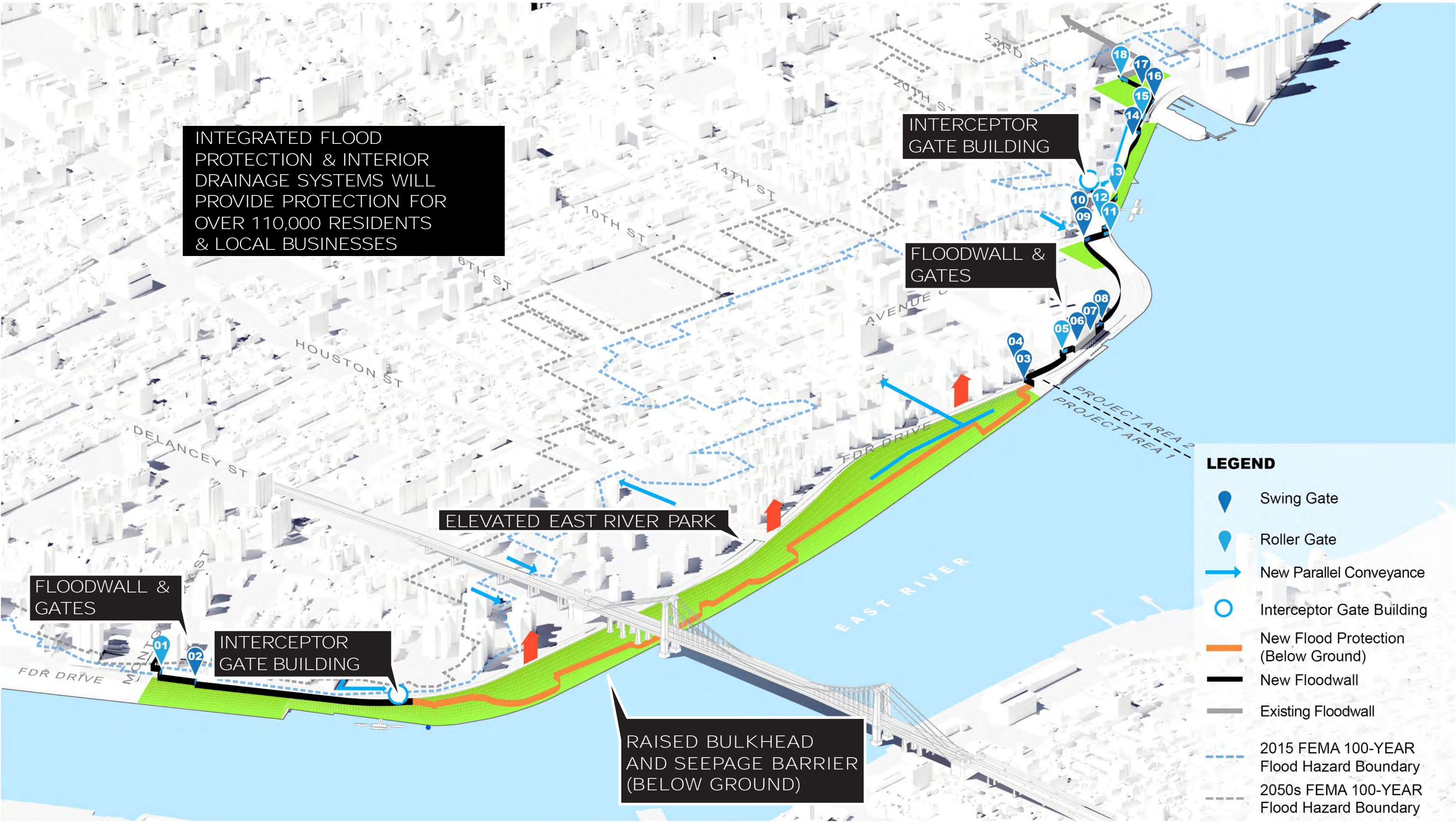




NYCHA HOUSING
ADJACENT TO EAST RIVER PARK

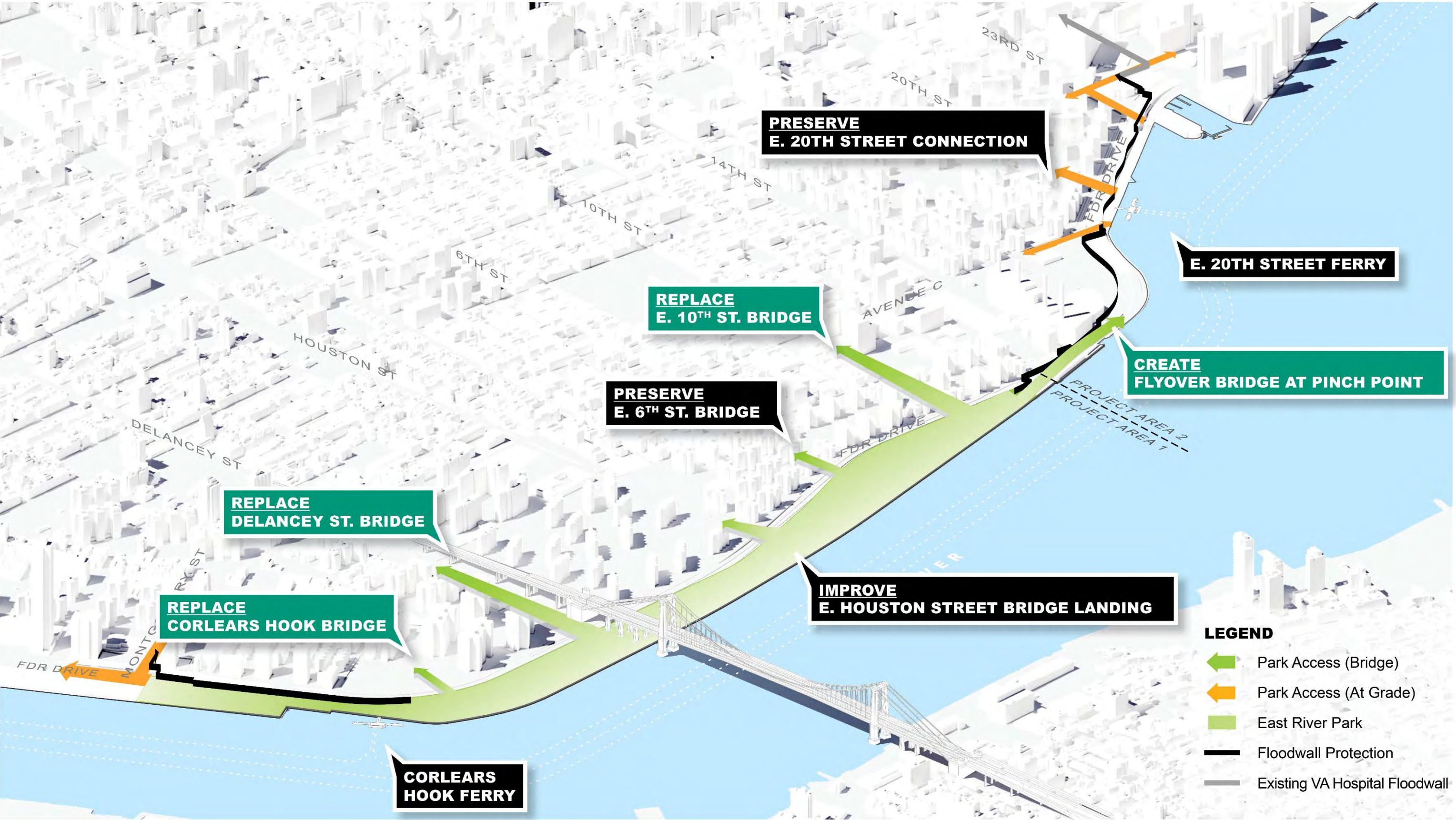
IMPROVED RESILIENCY FOR COMMUNITY

INTEGRATED FLOOD PROTECTION & INTERIOR DRAINAGE SYSTEM



IMPROVED WATERFRONT ACCESS

REPLACING, IMPROVING AND CREATING NEW CONNECTIONS



An aerial photograph of a city, likely New York City, showing a dense urban landscape with numerous skyscrapers and buildings. A large body of water, possibly the Hudson River, is visible on the right side of the image. A bridge, likely the Triborough Bridge, spans the water. The image is overlaid with a semi-transparent teal gradient. The text "PROJECT SCHEDULE & COMMUNITY OUTREACH" is centered in the image in a white, sans-serif font.

PROJECT SCHEDULE & COMMUNITY OUTREACH

CONSTRUCTABILITY CONSIDERATIONS

East River Park Construction Phasing Drivers:

- Location of underground sewer infrastructure
- Fill settling time required
- Pedestrian and construction vehicle access
- Constructing temporary pathways, drainage, etc.

Key Goals for Phasing:

- Complete flood protection structures by mid-2023
- Maximize public access to open space during construction



CONSTRUCTION PHASING FOR EAST RIVER PARK: SUMMER 2021



Closed
Portions

East River Park Open Area: 42%

CONSTRUCTION PHASING FOR EAST RIVER PARK: SUMMER 2022



Closed Portions

Early Openings

Pier 42 Upland Open Area: 100%
East River Park Open Area: 42%

CONSTRUCTION PHASING FOR EAST RIVER PARK : SUMMER 2023



Closed
Portions

Pier 42 Upland Open Area: 100%
East River Park Open Area: 53%

CONSTRUCTION PHASING FOR EAST RIVER PARK : SUMMER 2024



Closed
Portions

Pier 42 Upland Open Area: 100%
East River Park Open Area: 55%

CONSTRUCTION PHASING FOR EAST RIVER PARK: SUMMER 2025



Closed
Portions

Pier 42 Upland Open Area: 100%
East River Park Open Area: 56%

CONSTRUCTION PHASING FOR EAST RIVER PARK: END OF 2025

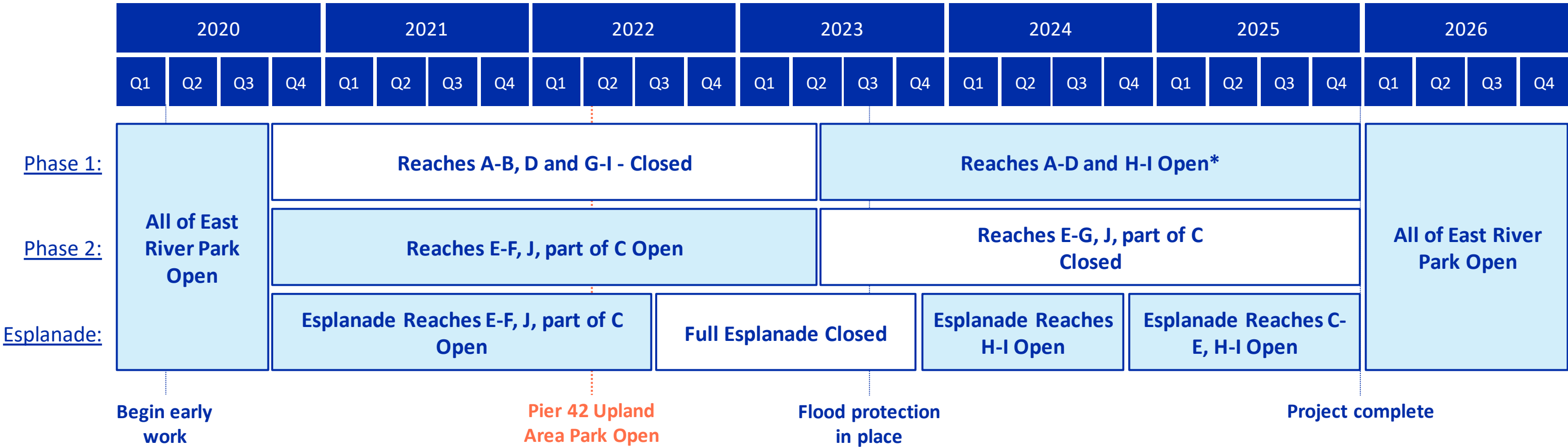


Pier 42 Upland Open Area: 100%
East River Park Open Area: 100%

UPDATED PHASING: NO FULL EAST RIVER PARK CLOSURE

Summary

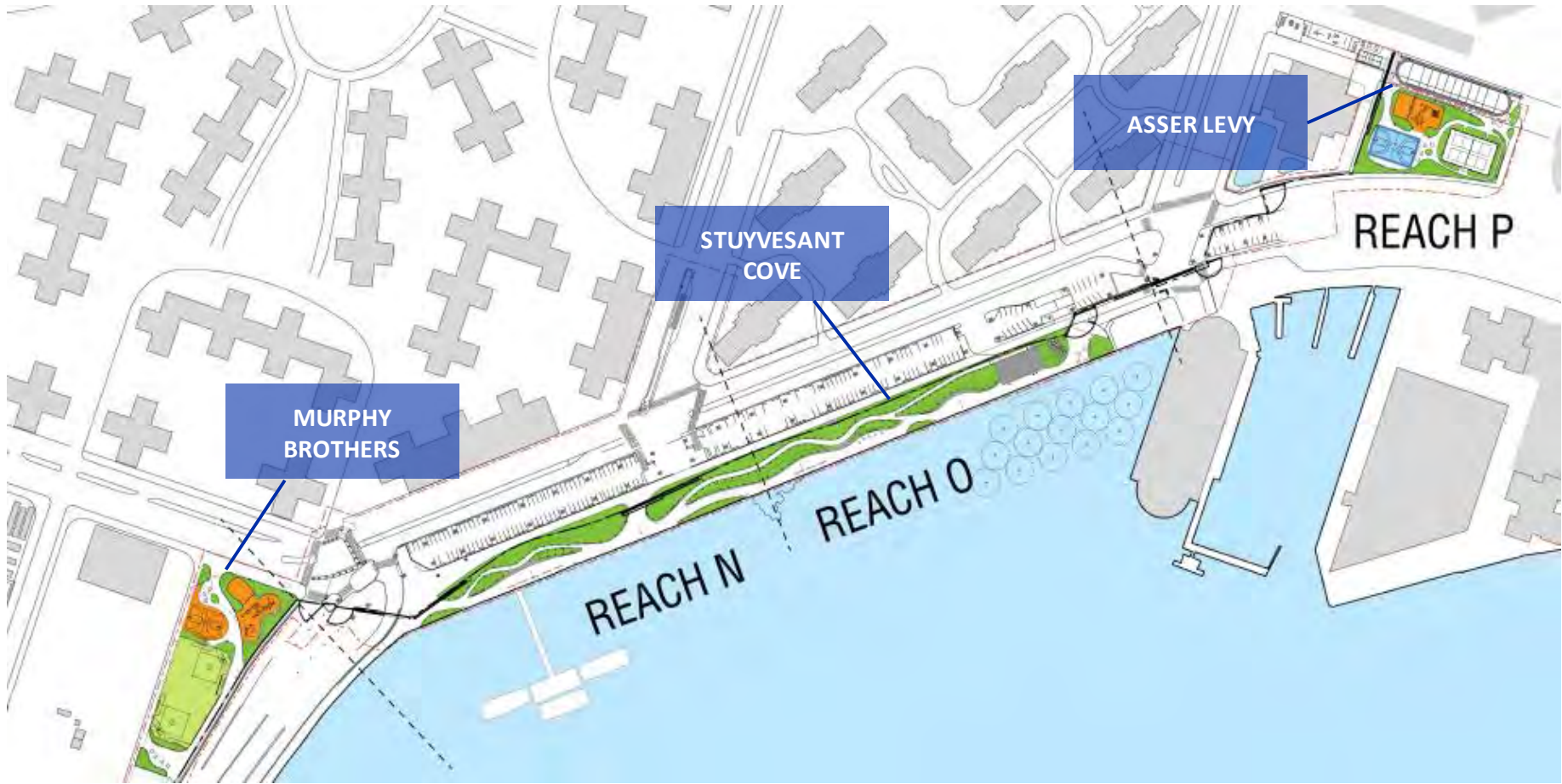
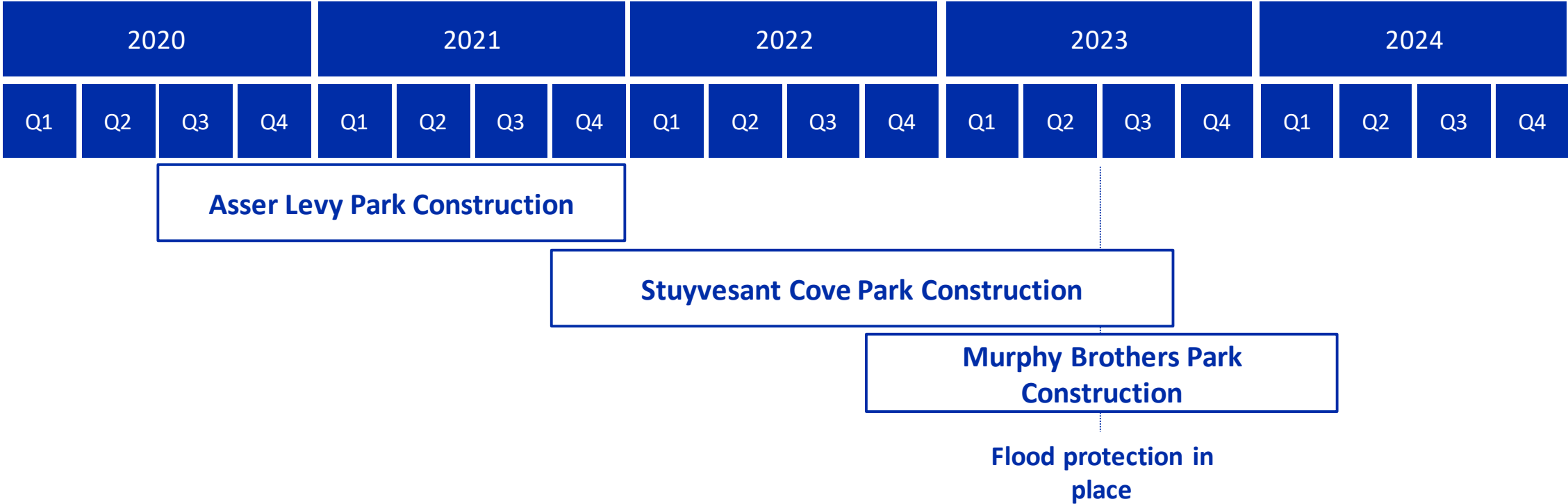
- East River Park stays open for summer 2020, with some early construction packages beginning in March 2020
- 3/5 of East River Park will close in Fall 2020, while 2/5 remains open through summer 2022
- East River Park is never closed in its entirety (compared to 3.5 full years in baseline option)
- Esplanade is only fully closed for 1 year (compared to 3.5 full years in baseline option)
- 1/2 of East River Park will reopen in summer 2023
- Flood protection is completed in mid-2023, project completed at end of 2025



Note: Phasing analysis underway for other project components but are expected to fit within East River Park durations in all cases.

*Construction in the Houston Street Area (Reach G) continues until end of 2025. Within reopened reaches, esplanade to be closed to facilitate access and staging, and some landscaping components will remain to be completed in passive recreational areas.

CONSTRUCTION PHASING FOR PROJECT AREA 2



An aerial, isometric architectural rendering of a city waterfront. A large suspension bridge spans a wide river. On the left bank, there is a dense urban area with many buildings. On the right bank, there is a planned development featuring a large green park area with winding paths, several rectangular green fields, and a row of blue-roofed buildings. The entire image is overlaid with a semi-transparent teal color.

DESIGN OVERVIEW

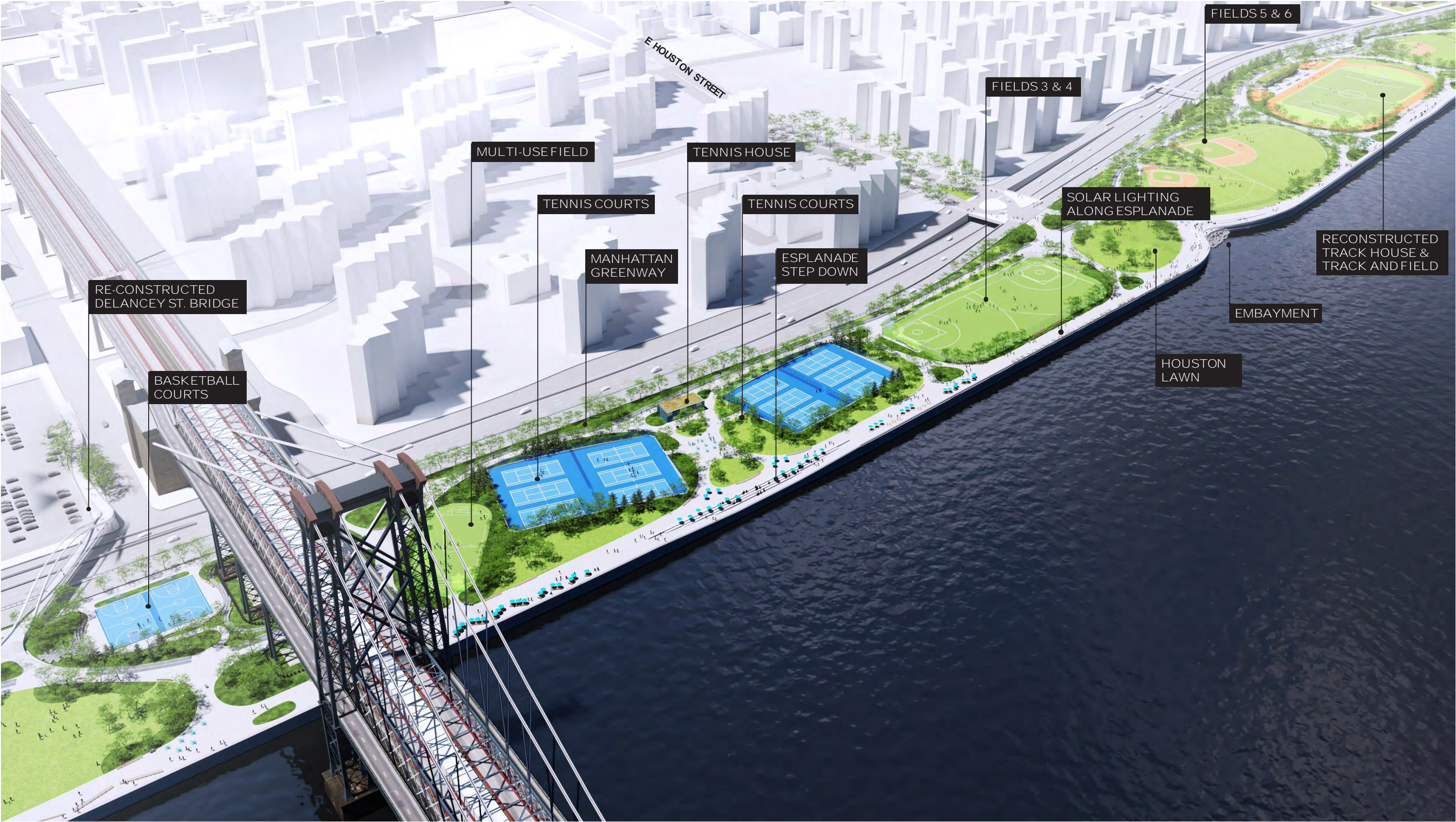
CORLEARS HOOK TO DELANCEY STREET

FUTURE CONDITION



HOUSTON STREET

FUTURE CONDITION



TRACK & EAST 10TH STREET

FUTURE CONDITION



PLANTING CONCEPT FOR RESILIENCE



HIGH, FULL CANOPY CREATES CONNECTED, DAPPLED SHADE



WOODLAND EDGES



LAYERED GROVES



PASTORAL OPENINGS



MARITIME EDGES

- Location: Western urban edge of park.
- Maintenance: Trees, shrubs, groundcovers
- Location: Park entries, clearing edges and special program areas
- Maintenance: Trees, garden beds
- Location: Open lawns and spectator areas
- Maintenance: Trees, lawn
- Location: Maritime edges of open spaces and esplanade
- Maintenance: Trees, shrubs, grasses

FLYOVER BRIDGE

FUTURE CONDITION



PROJECT AREA 2
FUTURE CONDITION



An aerial photograph of a city, likely New York City, showing a dense urban landscape with a large bridge crossing a body of water. The bridge has multiple lanes and a pedestrian walkway. The waterfront area is being developed with green spaces, parks, and recreational facilities. The text "ULURP ACTIONS" is overlaid in the center of the image.

ULURP ACTIONS

UNIFORM LAND USE REVIEW PROCEDURE (ULURP)

PROPOSED ACTIONS

ACQUISITION (EASEMENTS):

Project Area One

- Gouverneur Gardens Cooperative
- East River Housing Corporation
- NYCHA (Riis Houses and Baruch Houses)

Project Area Two

- Con Edison – For Operations & Maintenance of the Flood Protection System
 - Con Edison Power Station
 - Con Edison Office and Parking Lot
- VA Medical Center – For Operations & Maintenance of the Flood Protection System
 - VA Hospital
- Captain Patrick J. Brown Walk – For Construction of the Flyover Bridge

A zoning text amendment is necessary to acknowledge compliance of the proposed design with the City's Zoning regulations for a portion of the project area

City Map change (anticipated at a later date) for reconstruction of pedestrian bridges.

An aerial photograph of a city waterfront, likely New York City, showing a large bridge spanning a body of water. The bridge has multiple lanes and a pedestrian walkway. On the left side of the bridge, there is a large park area with green grass, trees, and a body of water. The city skyline is visible in the background, with many buildings. The image is overlaid with a semi-transparent teal color.

NEIGHBORHOOD PARKS IMPROVEMENTS

ANTICIPATED NEIGHBORHOOD IMPROVEMENTS

PARK UPGRADES



ASPHALT TO TURF (7 SITES)



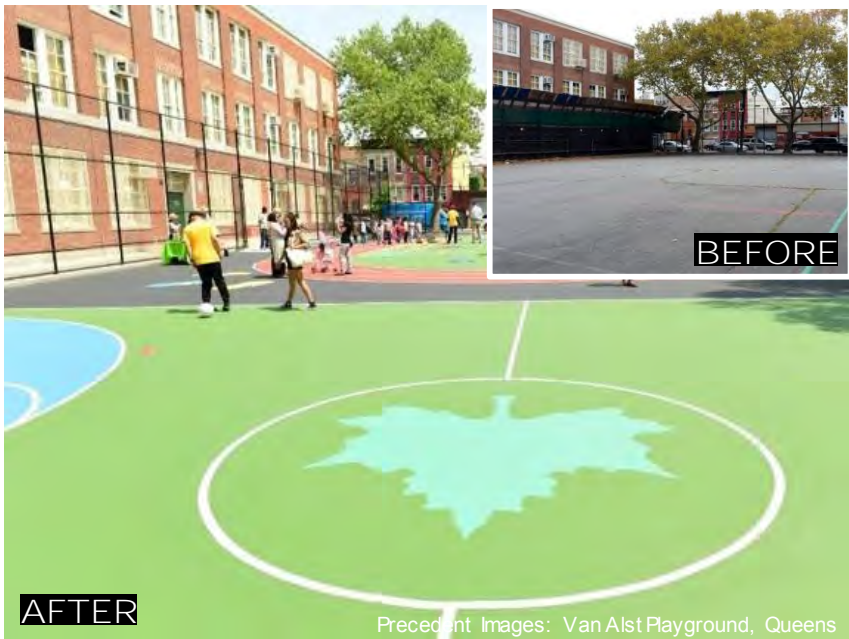
SOLAR FIELD LIGHTS (6 SITES)



ACCOMMODATING FIELD USERS



TREE PLANTINGS (1,000) & RAIN GARDENS (40)



SPORTS COATING (7 SITES)



PAINTING (16 SITES)

ANTICIPATED NEIGHBORHOOD IMPROVEMENTS

MORE PROGRAMMING AND NEW PARK SPACES



PRECEDENT: STROUD BROOKLYN

LAGUARDIA BATH HOUSE



TANAHEY PLAYGROUND



Image courtesy of SHoP Architects

PIER 42 PHASE 1: UPLAND PARK



RIIS AMPHITHEATER BEFORE PAINTING

NYCHA OPEN SPACE IMPROVEMENTS

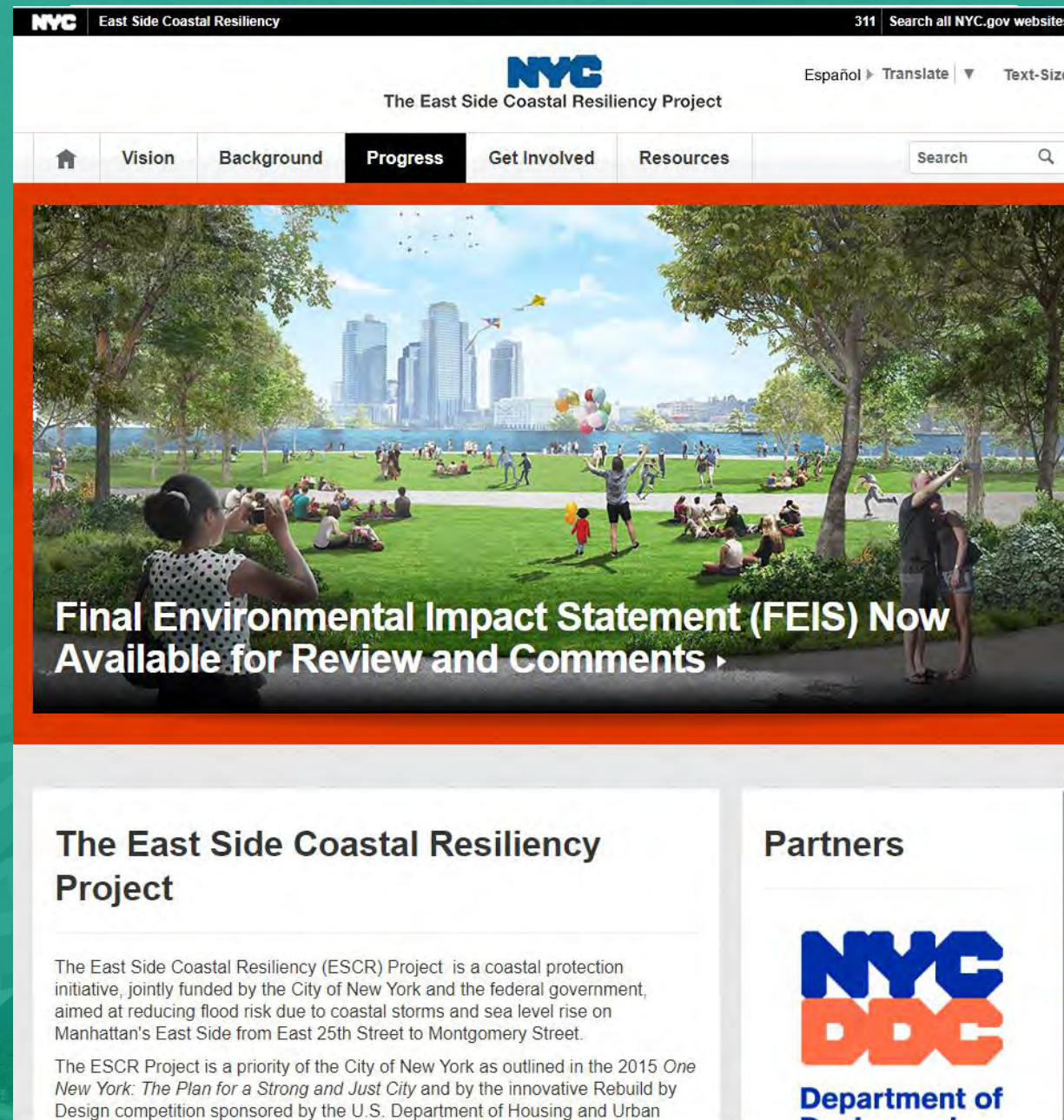


MORE NEIGHBORHOOD PARK STAFF



MORE RECREATIONAL PROGRAMMING

Website



Visit Us!
www.nyc.gov/escr
Twitter: @NYClimate