

# East Side Coastal Resiliency

Community Board 6  
Landuse and Waterfront Committee Meeting

January 28, 2019

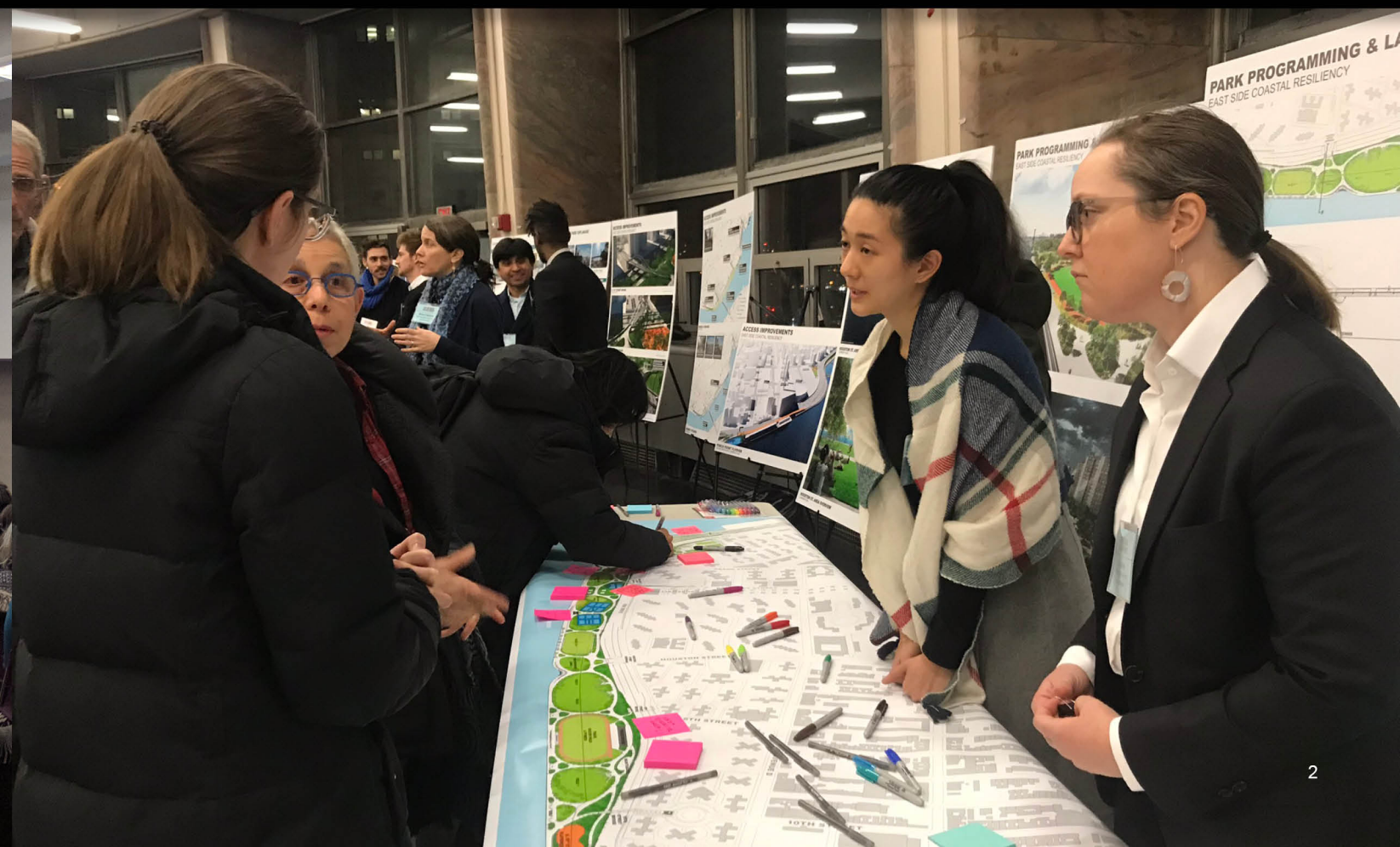
433 First Avenue (NYU School of Dentistry)







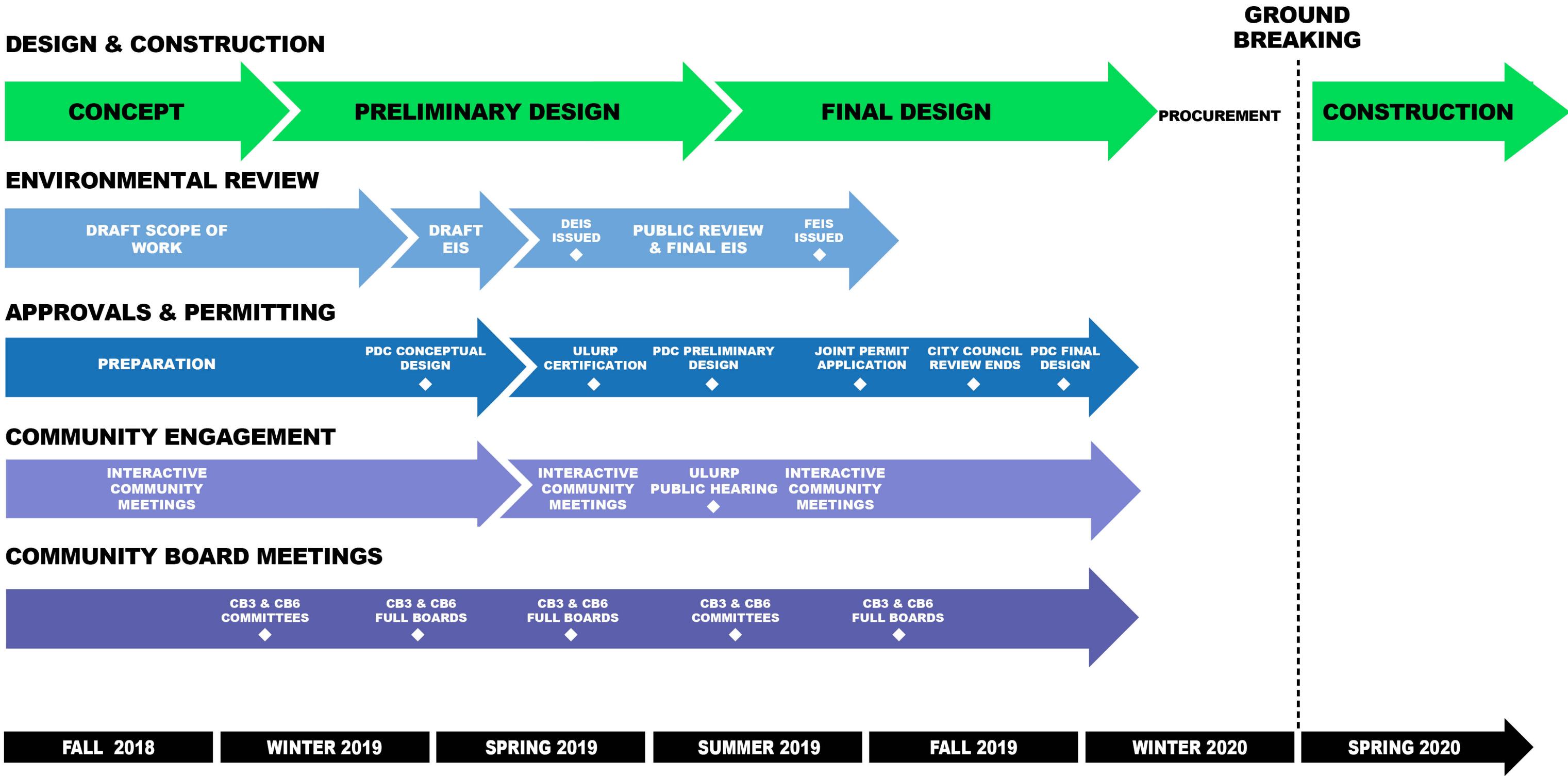
## COMMUNITY MEETINGS 12/10 AND 12/11





# IMPROVED SCHEDULE

OPERABLE SYSTEMS FOR 2023 HURRICANE SEASON





# **PRESENTATION AGENDA**

**Schedule and Overview**

**Project Area 2**

**Murphy Brothers**

**Stuvesant Cove**

**Asser Levy Playground**

**Flyover Bridge**

**Drainage Infrastructure**

**PA 1 / East River Park Update**

**Amphitheater Planning**

**Planting & Biodiversity**

**Community Engagement Schedule**



An aerial photograph of a city waterfront, overlaid with a semi-transparent teal filter. A multi-lane highway runs diagonally from the bottom left towards the top right. To the left of the highway, there is a park area with green grass, trees, and a small building. To the right of the highway, there is a body of water with several boats and a pier. In the background, there are various city buildings and structures. The text "PROJECT AREA 2 UPDATE" is centered in the middle of the image in a bold, white, sans-serif font.

# PROJECT AREA 2 UPDATE





**PROJECT AREA 2 PARKS**  
PRELIMINARY DESIGN



An aerial photograph of the Murphy Brothers Playground, overlaid with a semi-transparent teal filter. The playground is situated in an urban environment, adjacent to a multi-lane highway with several cars visible. The park area includes a basketball court, a soccer field, and a central play area with various equipment and trees. The text "MURPHY BROTHERS PLAYGROUND" is prominently displayed in white, bold, uppercase letters across the center of the image.

# MURPHY BROTHERS PLAYGROUND





**MURPHY BROTHERS PLAYGROUND**  
PRELIMINARY DESIGN



An architectural rendering of a waterfront development in Stuyvesant Cove, New York City. The scene is viewed from an elevated perspective, showing a multi-lane highway on the left, a pedestrian walkway with trees and landscaping in the middle, and a body of water on the right. Several boats are visible in the water, and a series of dark vertical posts or pilings extend into the water. The entire image is overlaid with a semi-transparent teal color.

# STUYVESANT COVE





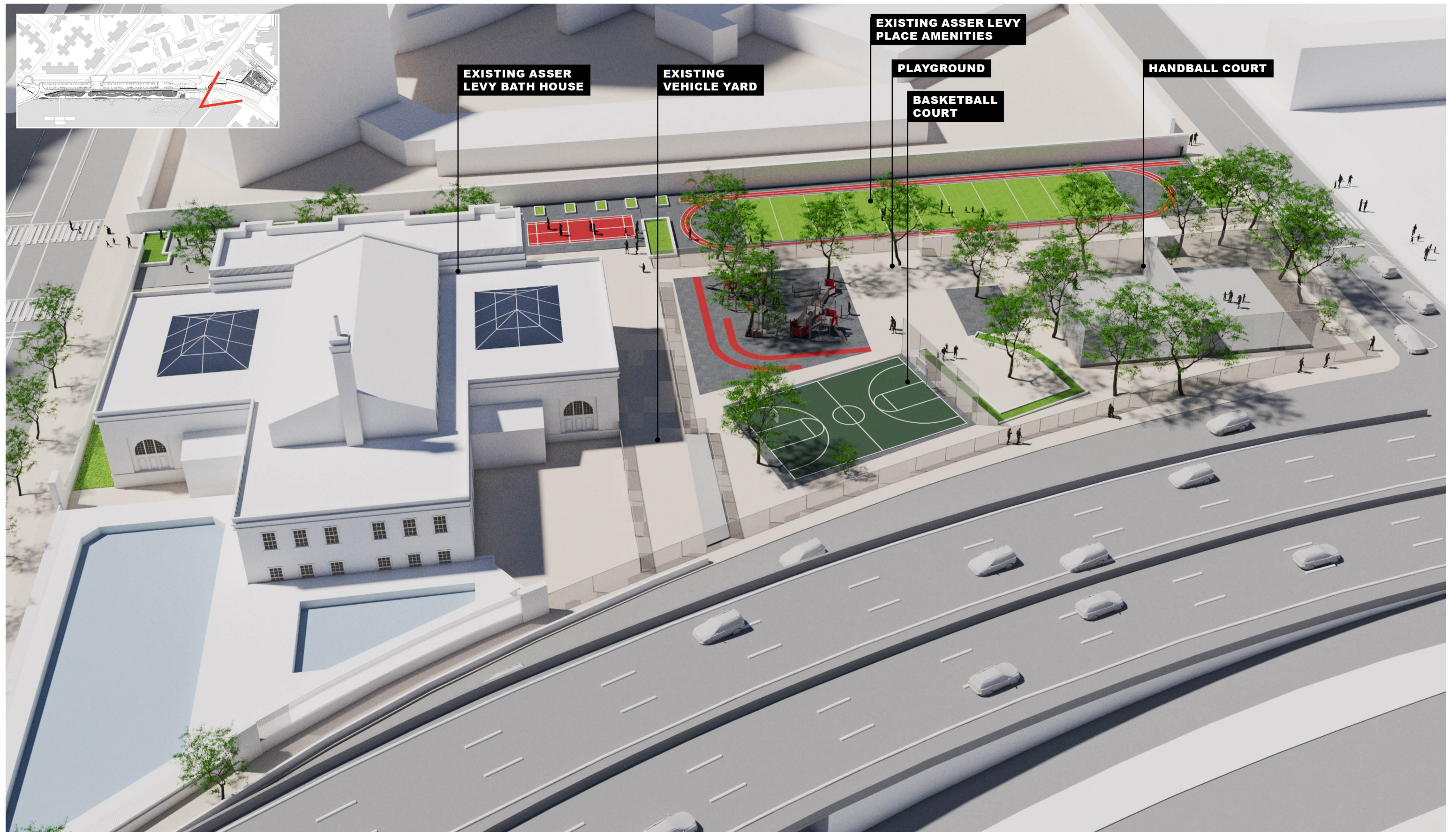
**STUYVESANT COVE PARK**  
PRELIMINARY DESIGN



An aerial photograph of the Asser Levy Playground, featuring a basketball court, a soccer field, and a large play area with trees and equipment. The playground is situated next to a multi-lane highway with several cars. To the left of the playground is a large, light-colored building with a grid-like roof structure. The entire image is covered with a semi-transparent teal overlay.

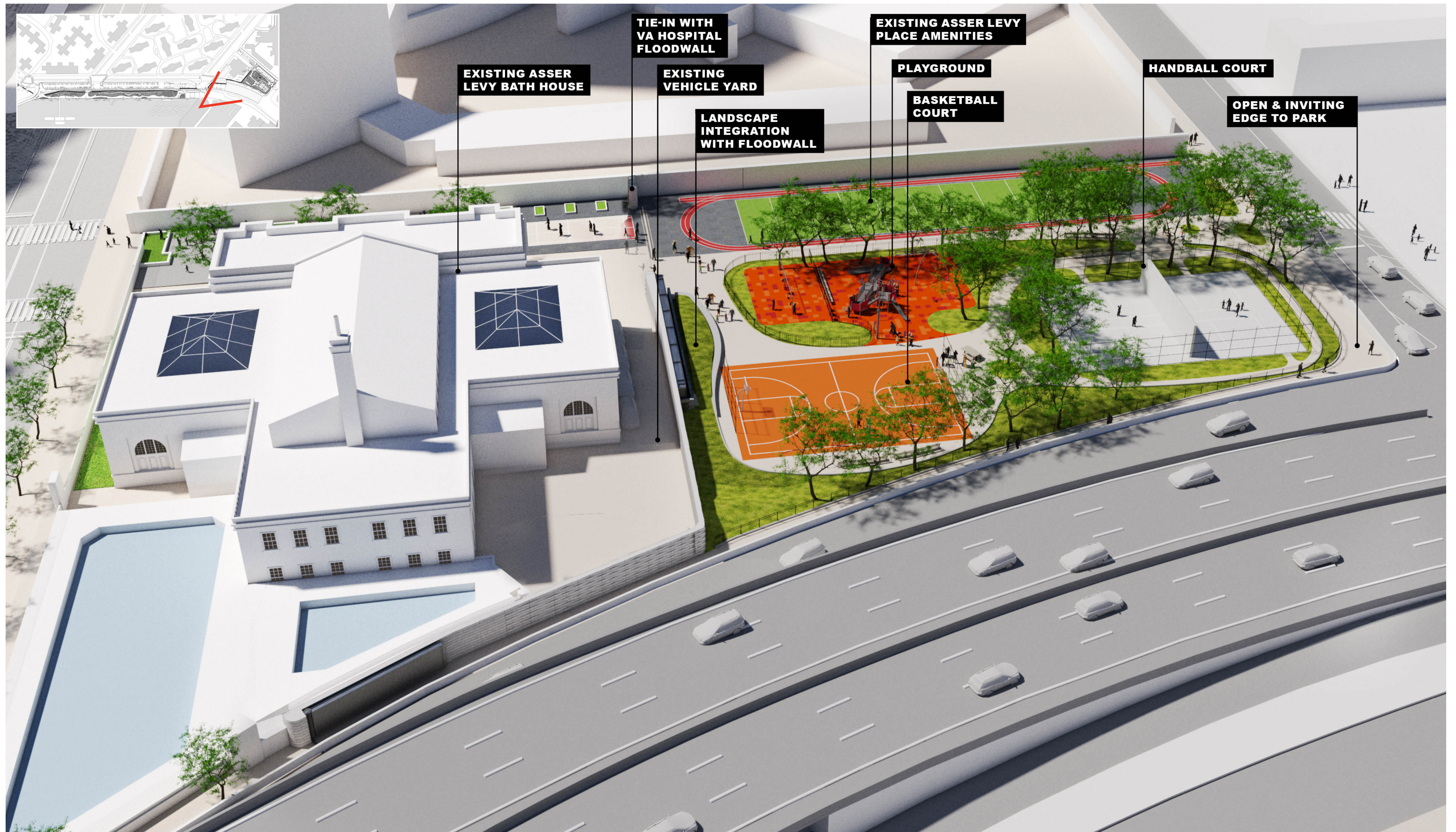
# ASSER LEVY PLAYGROUND





**ASSER LEVY PLAYGROUND**  
EXISTING CONDITIONS



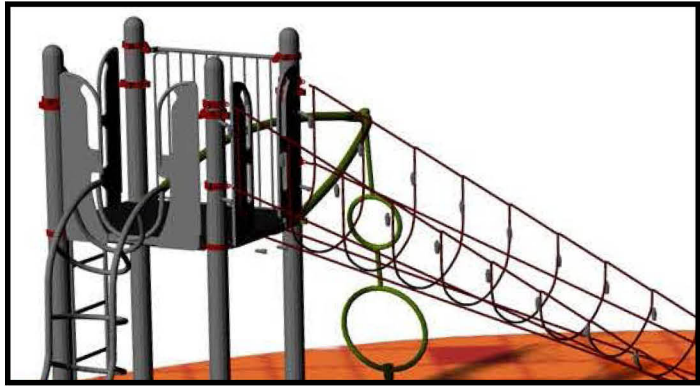


**ASSER LEVY PLAYGROUND**  
PRELIMINARY DESIGN



# RESILIENT PLAYGROUND FEATURES

## SITE STRATEGY



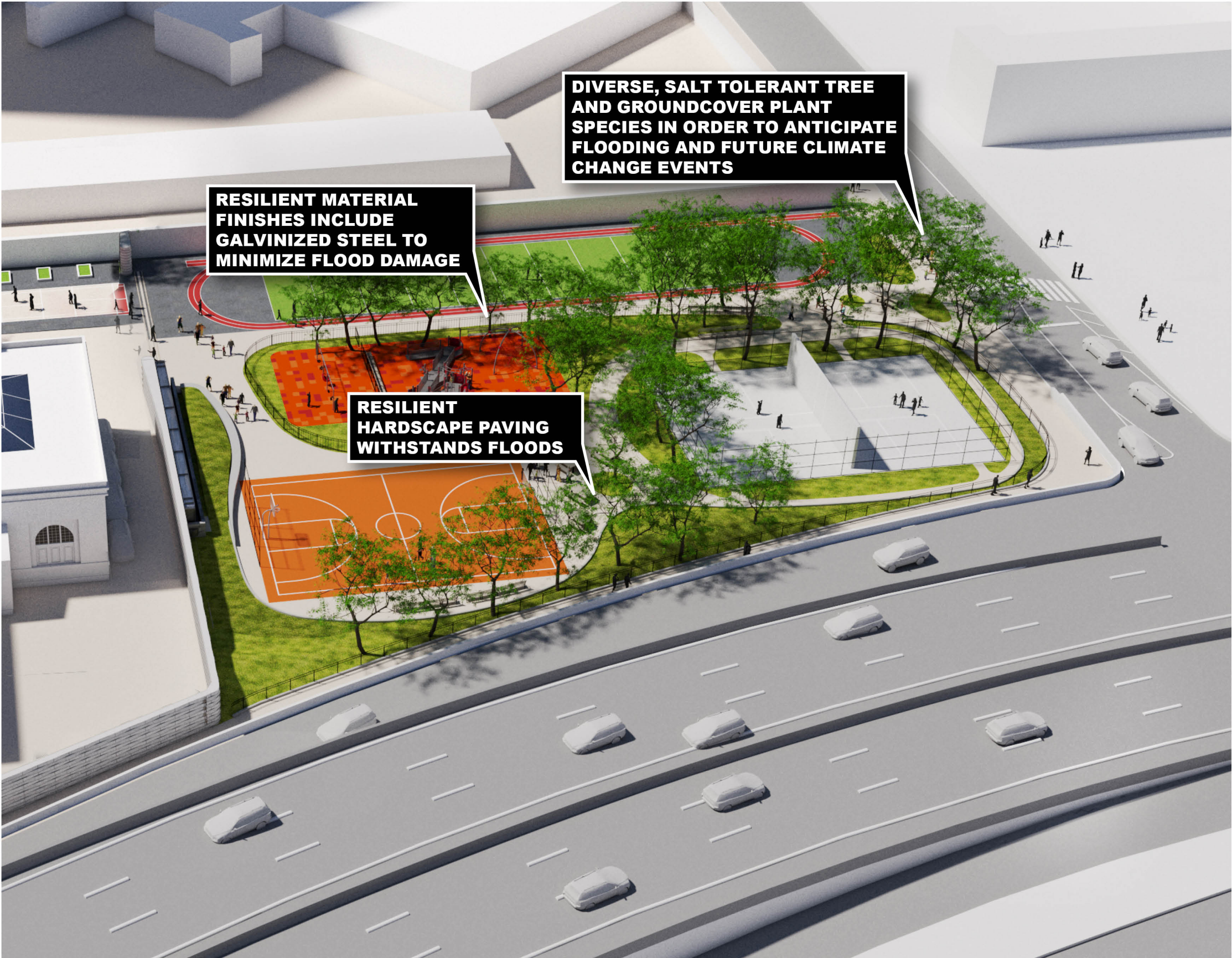
**MATERIAL FINISHES**



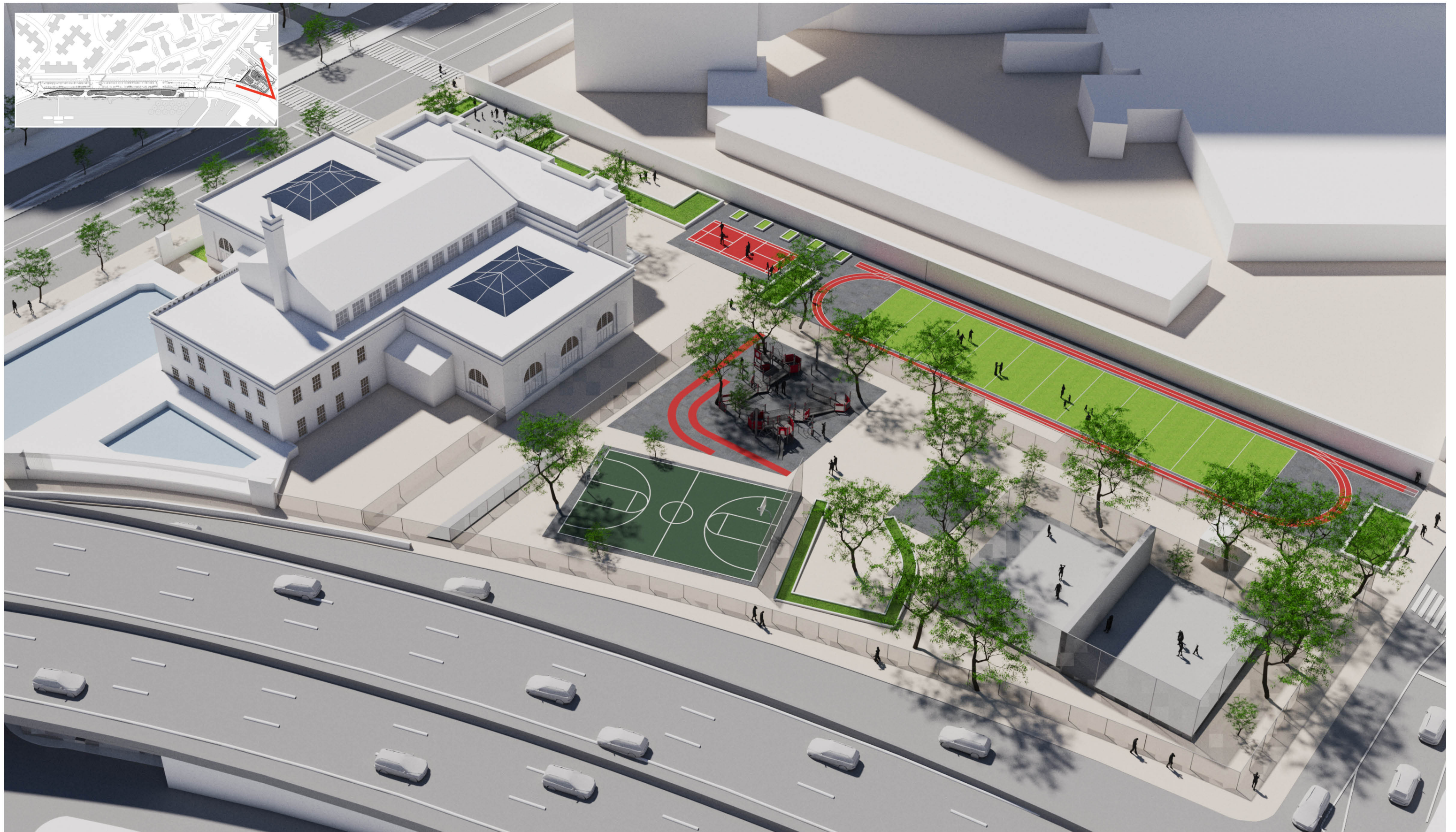
**PLANTING**



**HARDSCAPE**

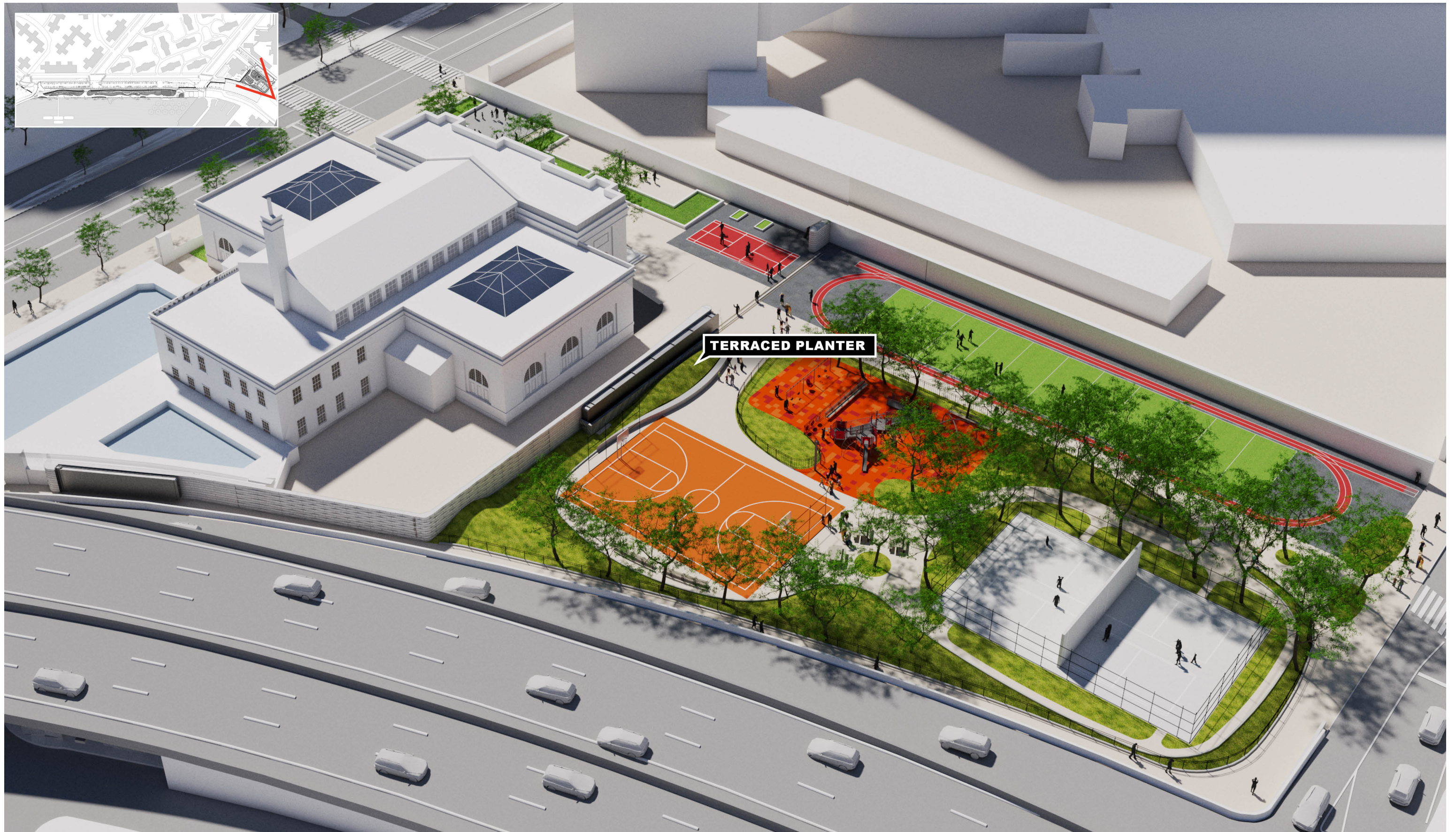






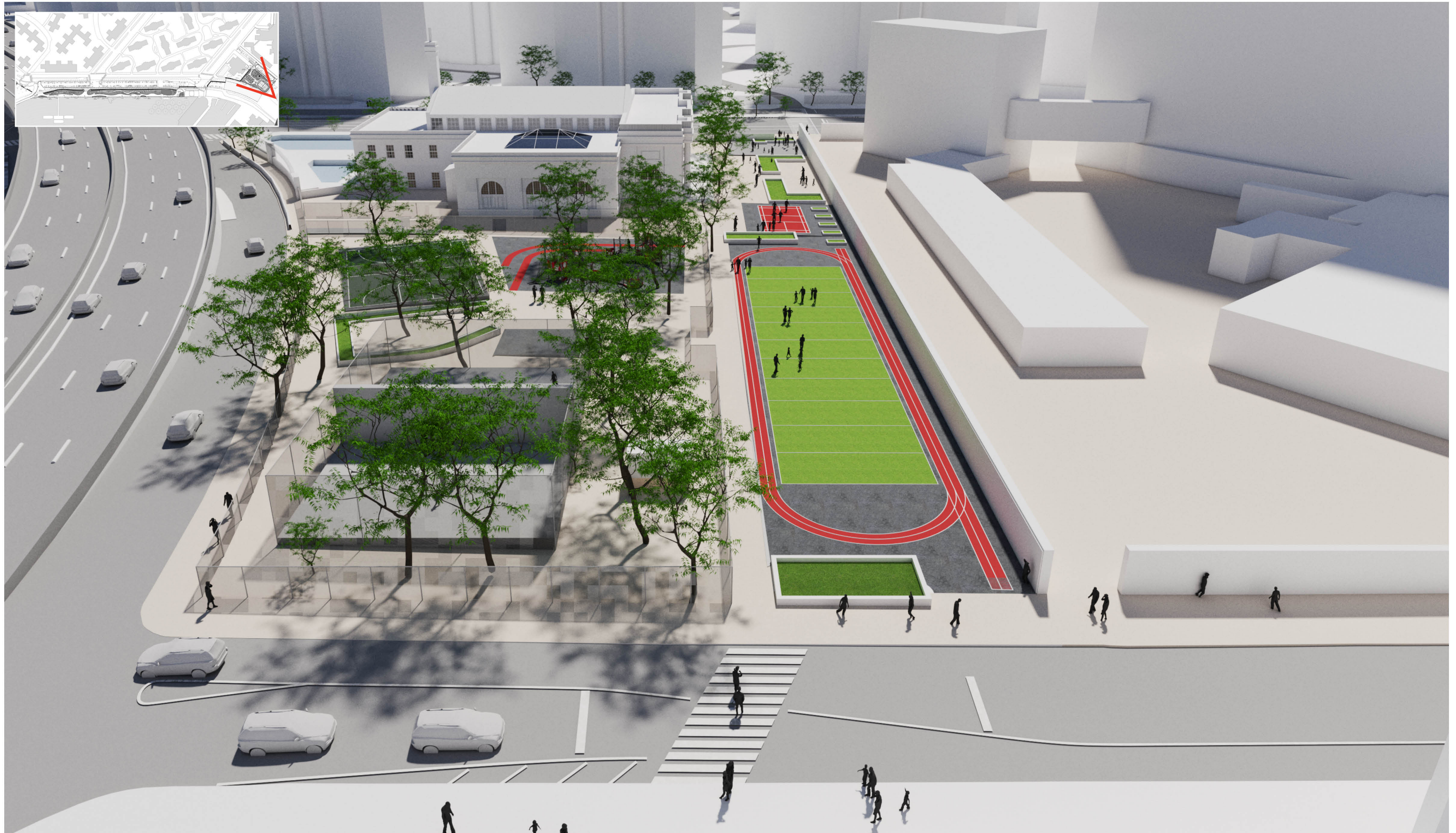
**ASSER LEVY PLAYGROUND**  
EXISTING CONDITIONS





**ASSER LEVY PLAYGROUND**  
PRELIMINARY DESIGN





**ASSER LEVY PLAYGROUND**  
EXISTING CONDITIONS





**ASSER LEVY PLAYGROUND**  
PRELIMINARY DESIGN





**ASSER LEVY PLAYGROUND**  
EXISTING CONDITIONS





**ASSER LEVY PLAYGROUND**  
PRELIMINARY DESIGN





**ASSER LEVY PLAYGROUND**  
EXISTING CONDITIONS





**ASSER LEVY PLAYGROUND**  
PRELIMINARY DESIGN





**ASSER LEVY PLAYGROUND**  
EXISTING CONDITIONS





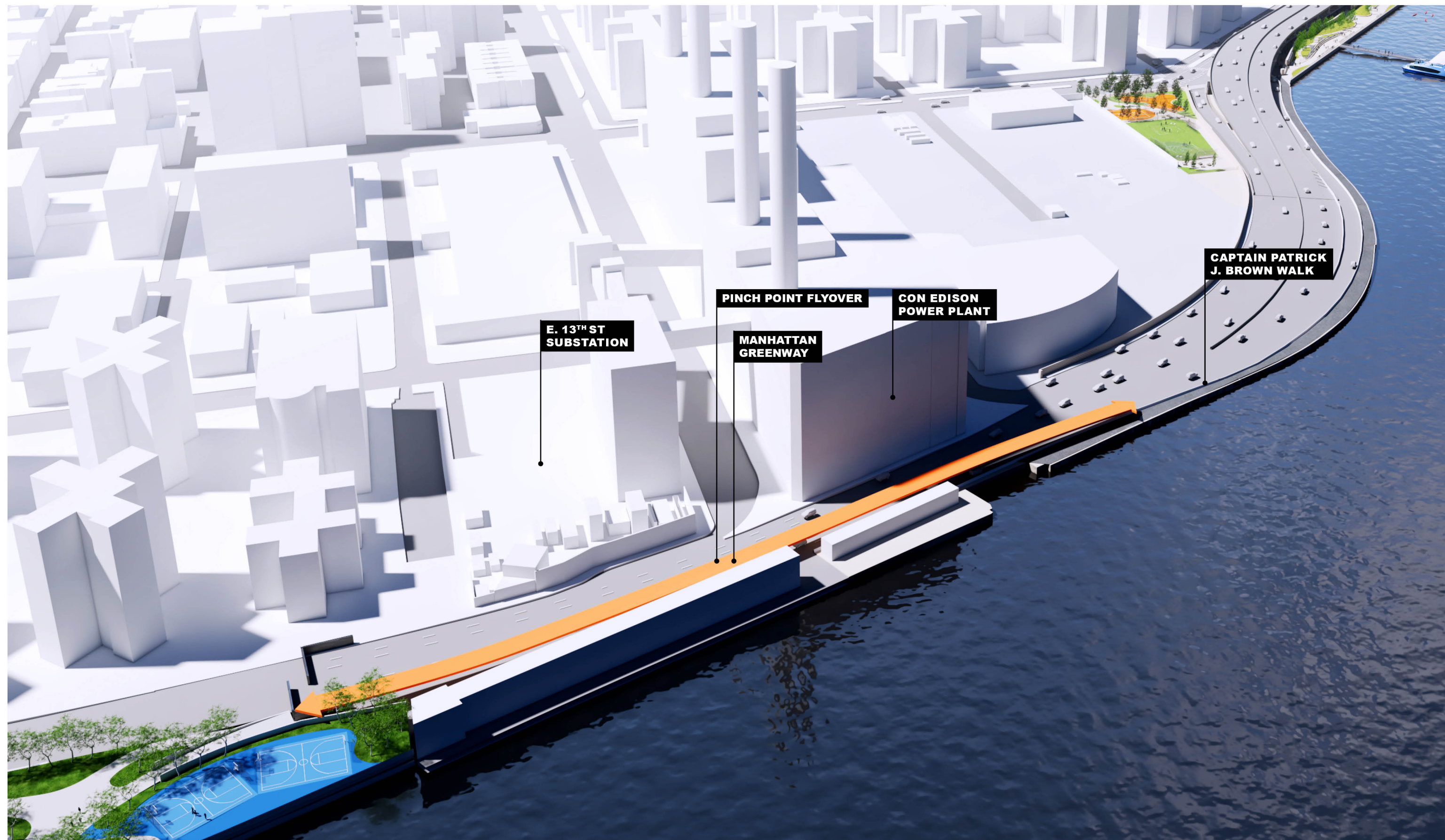
**ASSER LEVY PLAYGROUND**  
PRELIMINARY DESIGN



An aerial, isometric-style illustration of a cityscape. A large, multi-lane flyover bridge spans a wide river. The bridge has a yellow-green highlighted path along its length. To the left of the bridge, there's a blue sports court with white markings. The city features various building footprints, some with green roofs, and a winding road on the right side of the river. The entire scene is overlaid with a semi-transparent teal color.

# FLYOVER BRIDGE





**PINCH POINT FLYOVER BRIDGE**  
CURRENT PLAN



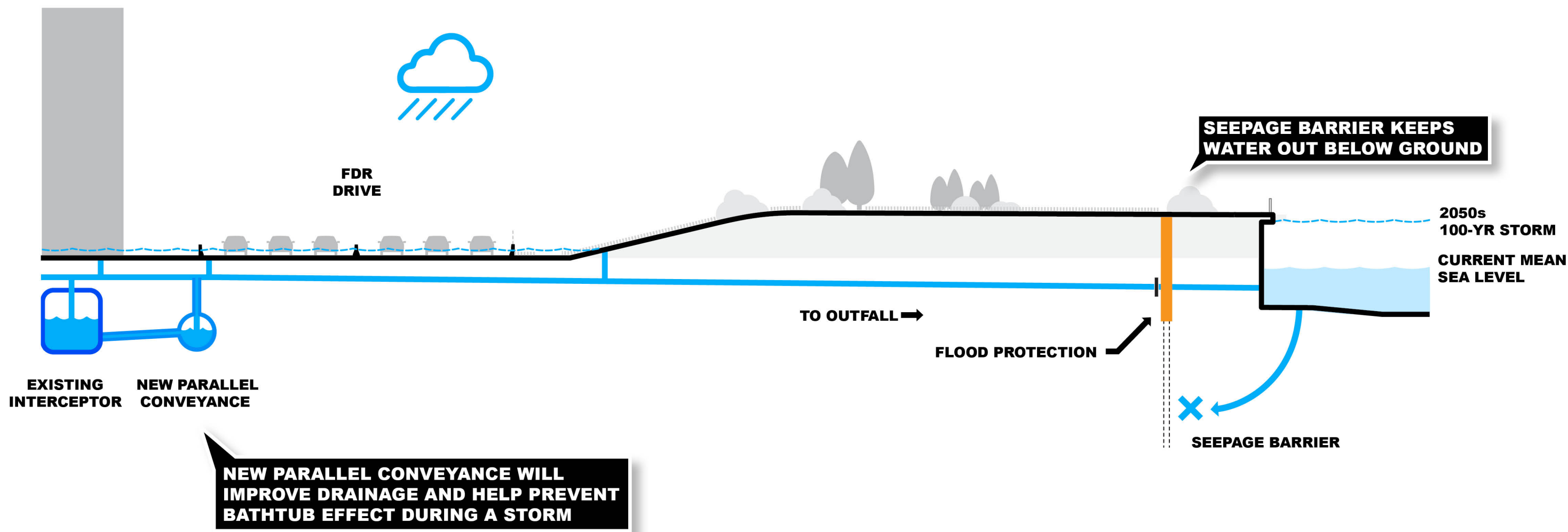
An aerial photograph of a city, likely New York City, showing a dense urban landscape with a river and a bridge. The image is overlaid with a teal gradient. The text "DRAINAGE INFRASTRUCTURE" is centered in white, bold, uppercase letters.

# **DRAINAGE INFRASTRUCTURE**



# IMPROVED DRAINAGE

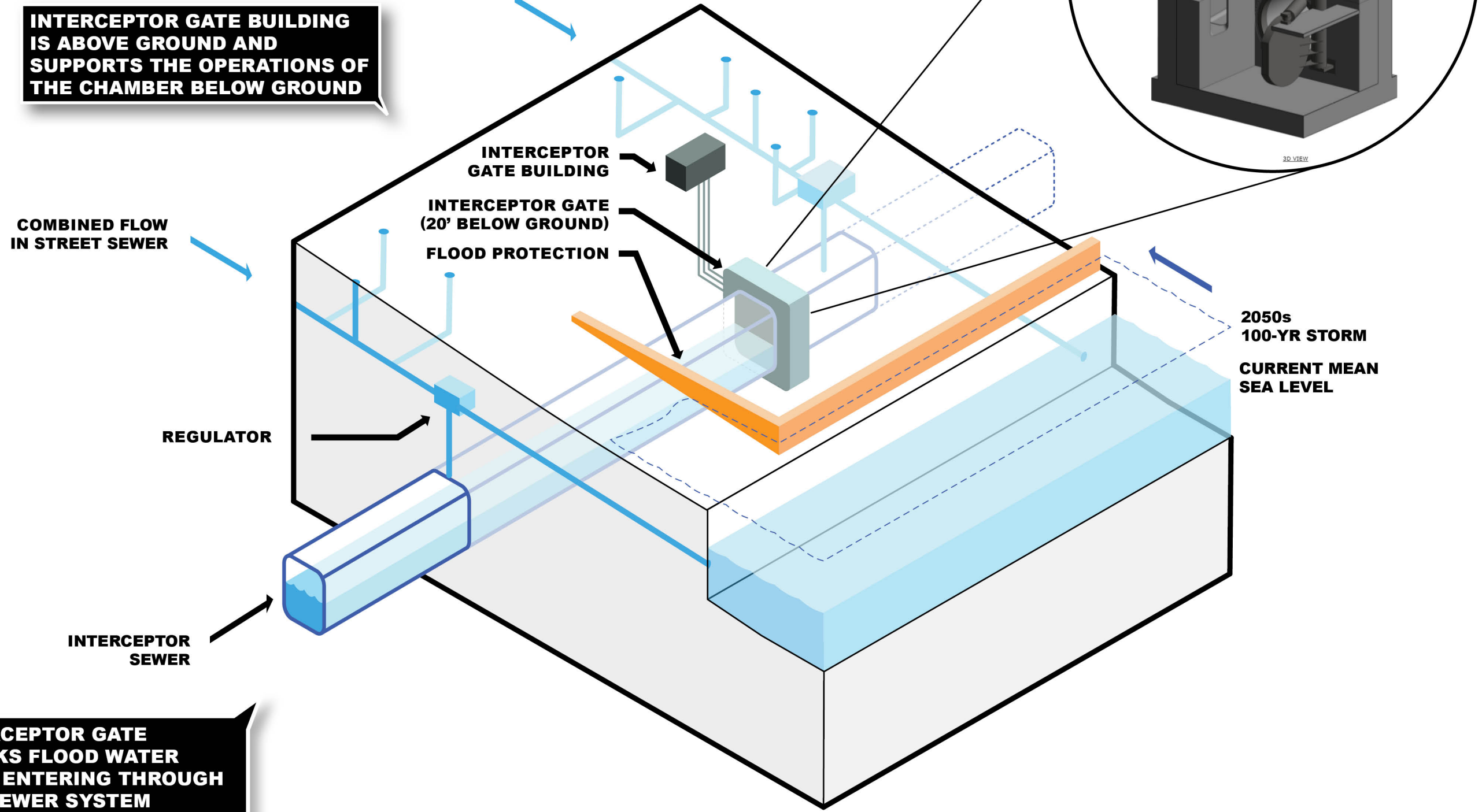
SEWER IMPROVEMENTS TO REDUCE UPLAND FLOODING





# IMPROVED DRAINAGE

## INTERCEPTOR GATE & ASSOCIATED GATE BUILDING



**INTERCEPTOR GATE BUILDING IS ABOVE GROUND AND SUPPORTS THE OPERATIONS OF THE CHAMBER BELOW GROUND**

**COMBINED FLOW IN STREET SEWER**

**REGULATOR**

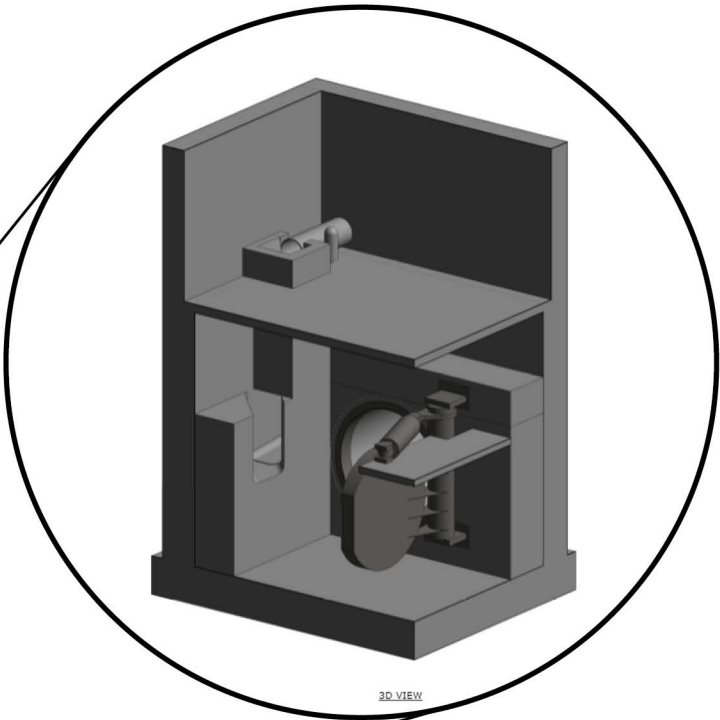
**INTERCEPTOR SEWER**

**INTERCEPTOR GATE BLOCKS FLOOD WATER FROM ENTERING THROUGH THE SEWER SYSTEM**

**INTERCEPTOR GATE BUILDING**

**INTERCEPTOR GATE (20' BELOW GROUND)**

**FLOOD PROTECTION**



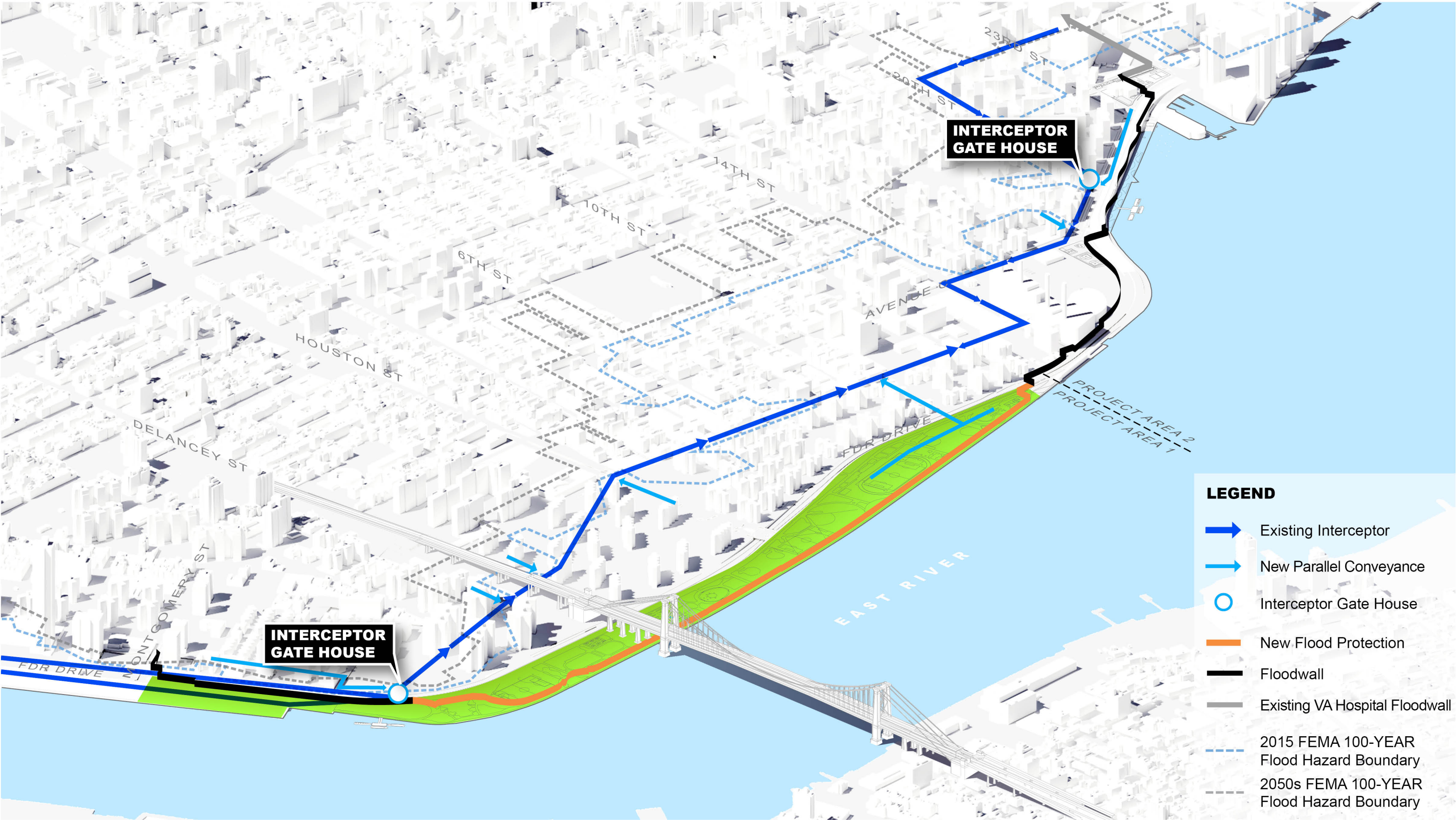
**INTERCEPTOR GATE CHAMBER VISUALIZATION**

**2050s 100-YR STORM**  
**CURRENT MEAN SEA LEVEL**



# IMPROVED DRAINAGE

## SITE STRATEGY





# IMPROVED DRAINAGE

## INTERCEPTOR GATES AND BUILDING LOCATIONS



South Gate Building Location  
Between FDR and Corlear's Hook Park

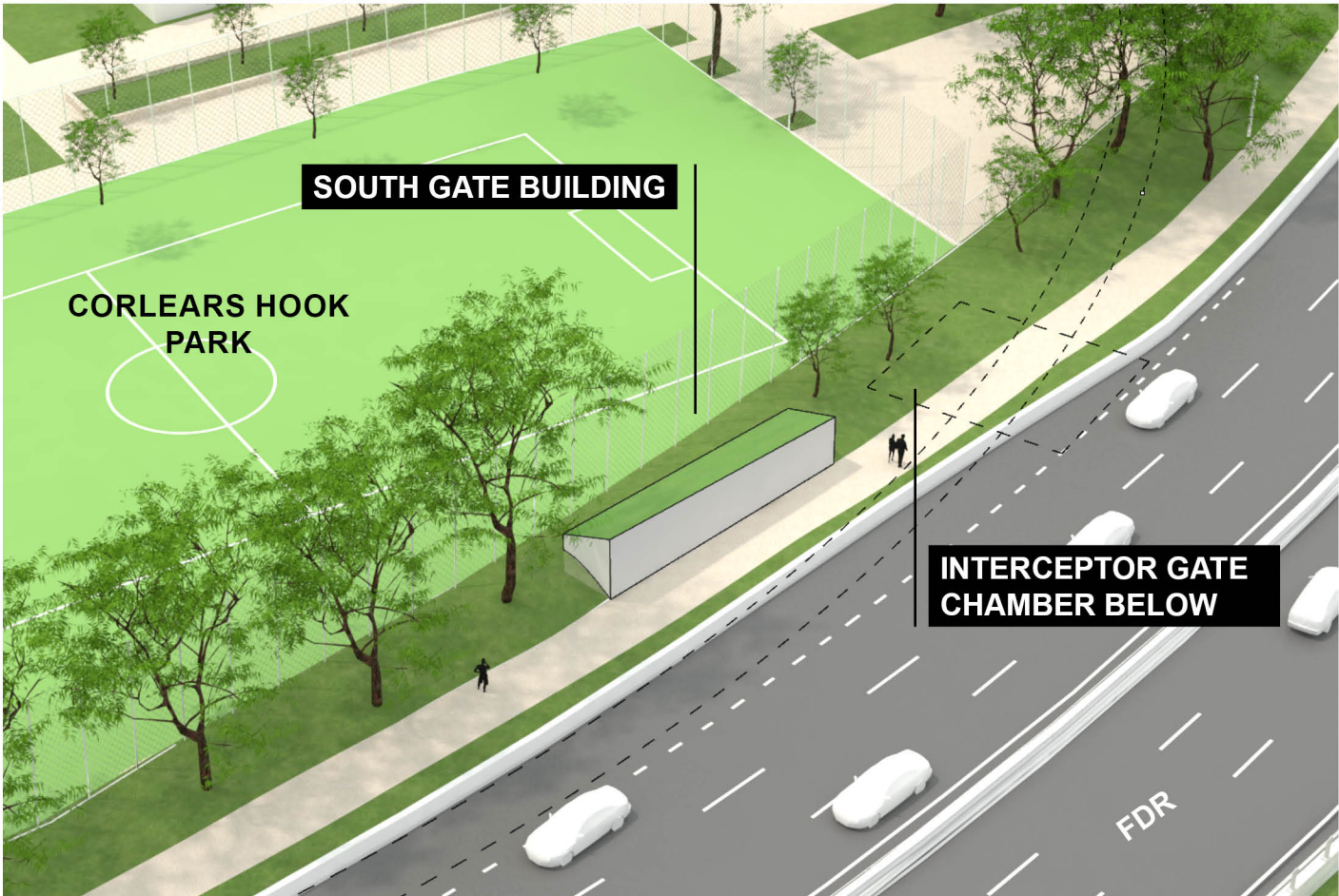


North Gate Building Location  
In 20th Street median near Ave. C

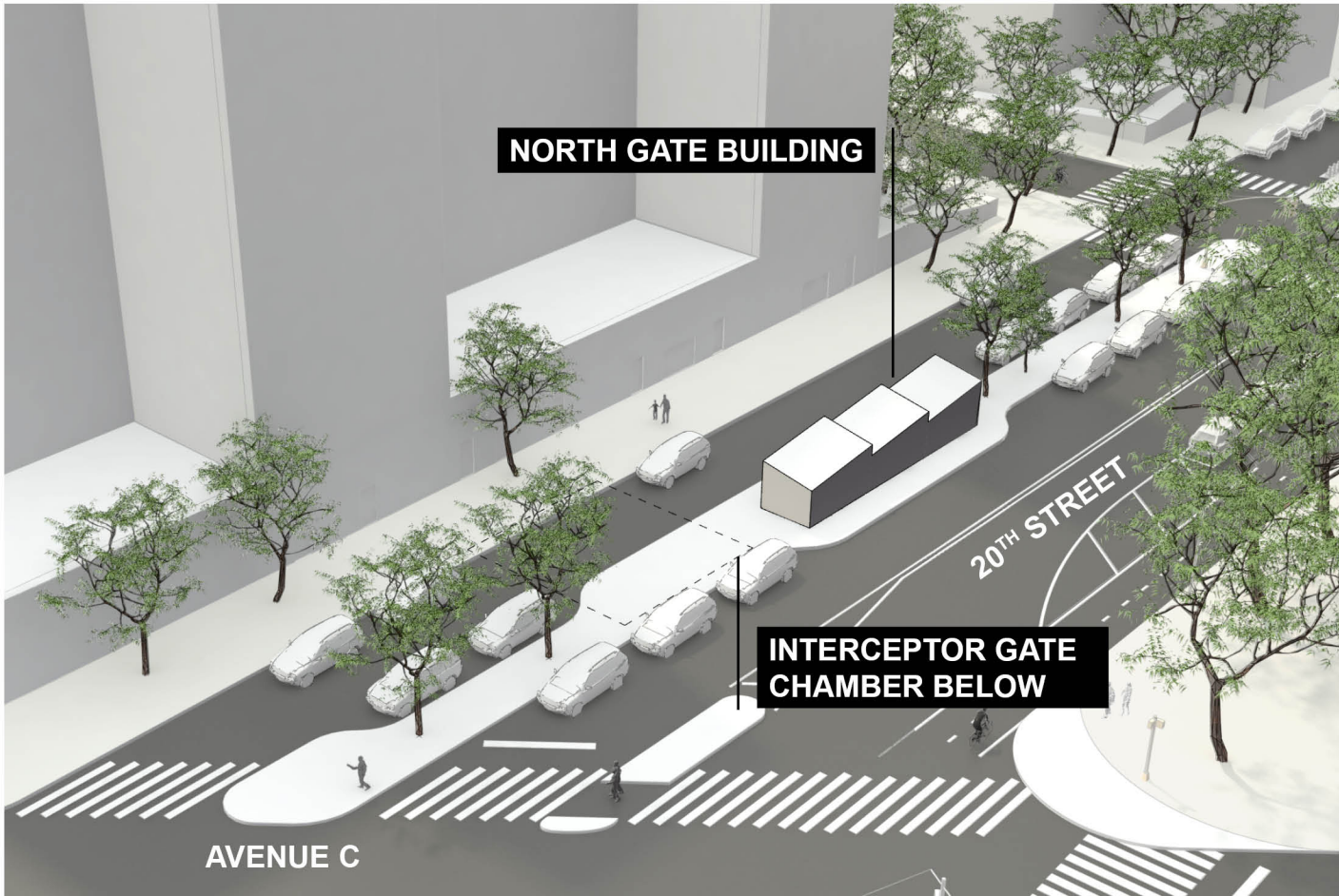


# IMPROVED DRAINAGE

## INTERCEPTOR GATES AND BUILDING LOCATIONS



South Gate Building Location  
Between FDR and Corlears Hook Park



North Gate Building Location  
In 20th Street median near Ave. C



An aerial photograph of East River Park in New York City, showing the park's layout, including baseball fields, walking paths, and the East River Bridge. The image is overlaid with a semi-transparent teal color.

# **PA 1 & EAST RIVER PARK UPDATE**







An aerial photograph of a city, likely New York City, showing a dense urban landscape with a river and a bridge. The image is overlaid with a teal filter. The text "AMPHITHEATER PLANNING" is centered in the image.

# AMPHITHEATER PLANNING





**DELANCEY AREA**  
CURRENT PLAN



## SUMMARY OF WHAT WE HEARD (DEC. 2018)

## SUMMARY OF WHAT WE HEARD (DEC. 2018)



## PROVIDE A MIX OF FIXED SEATING AND LAWNS SEATING

## ACCOMMODATE ALTERNATIVE EVENTS - SUCH AS DANCING

## CREATE A SPACE WITH VIEWS TO THE WATER



## MOVE THE AMPHITHEATER AWAY FROM HOMES

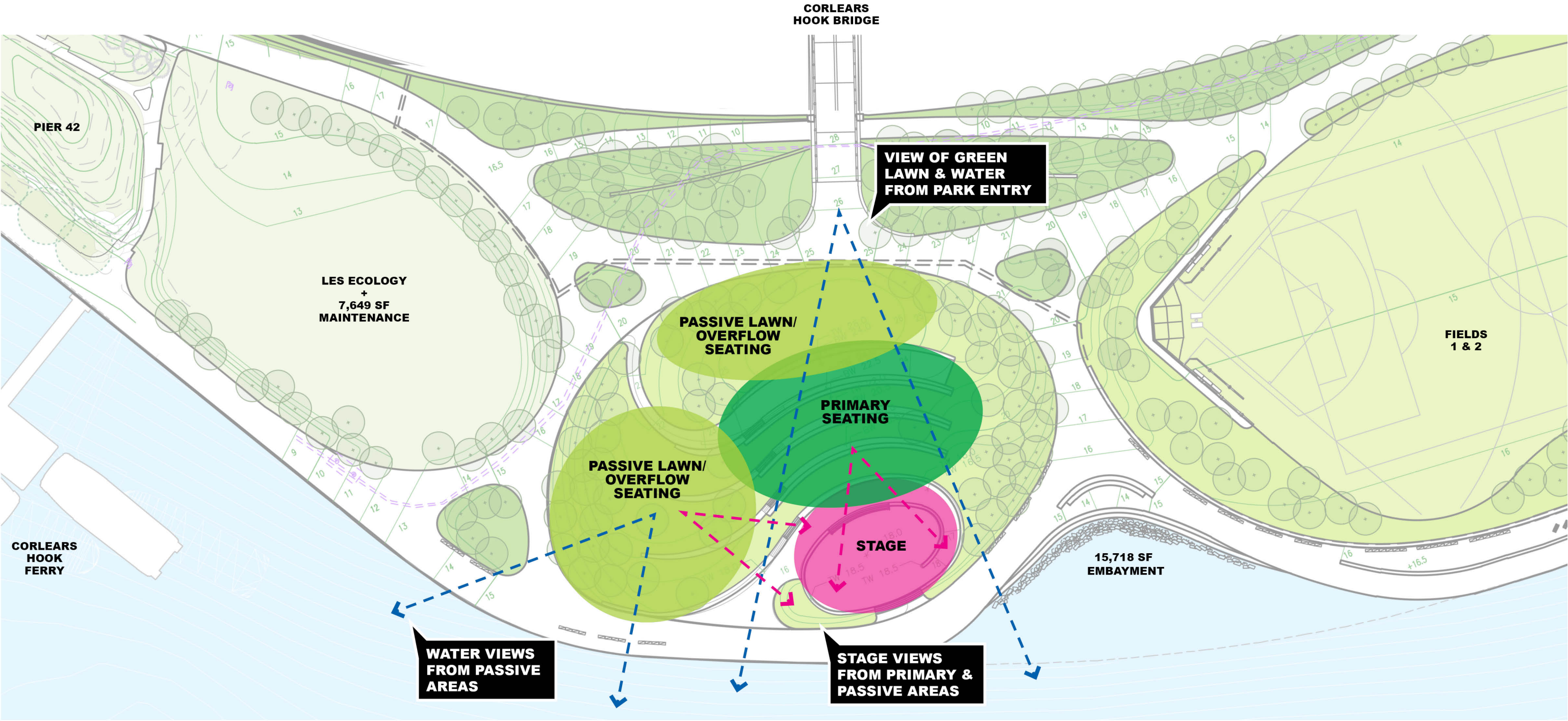
## INCLUDE STAIR RUNNING/ FITNESS OPPORTUNITIES

## MAKE THE SPACE AS GREEN AS POSSIBLE



# AMPHITHEATER

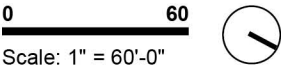
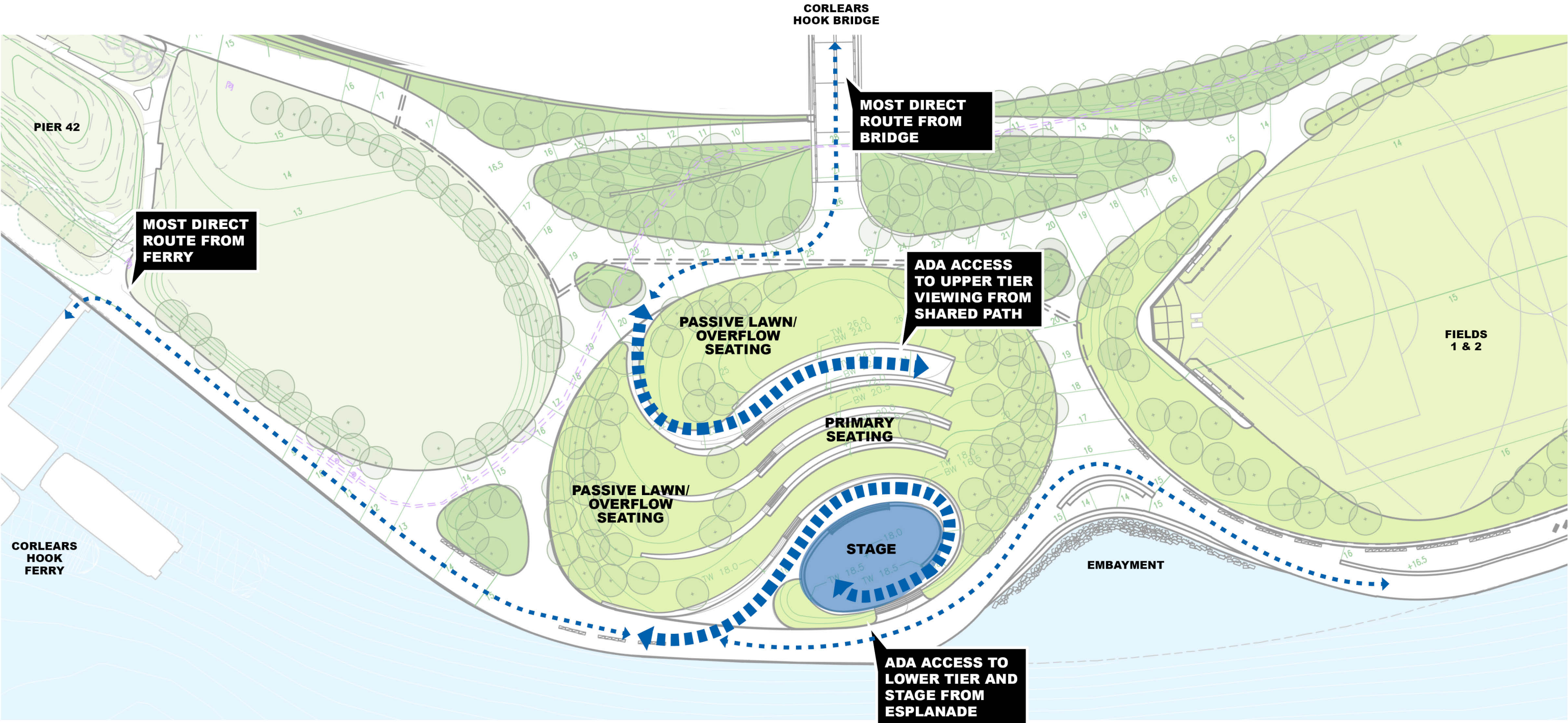
PRELIMINARY CONCEPT PROGRAM





# AMPHITHEATER

PRELIMINARY CIRCULATION & ACCESSIBILITY





An aerial photograph of a city, likely New York City, showing a dense urban grid, a large body of water (the Hudson River), and a prominent suspension bridge (the Triborough Bridge). The image is overlaid with a semi-transparent teal color. The text "PLANTING & BIODIVERSITY" is centered in white, bold, sans-serif capital letters.

# PLANTING & BIODIVERSITY



# PARK RESILIENCY



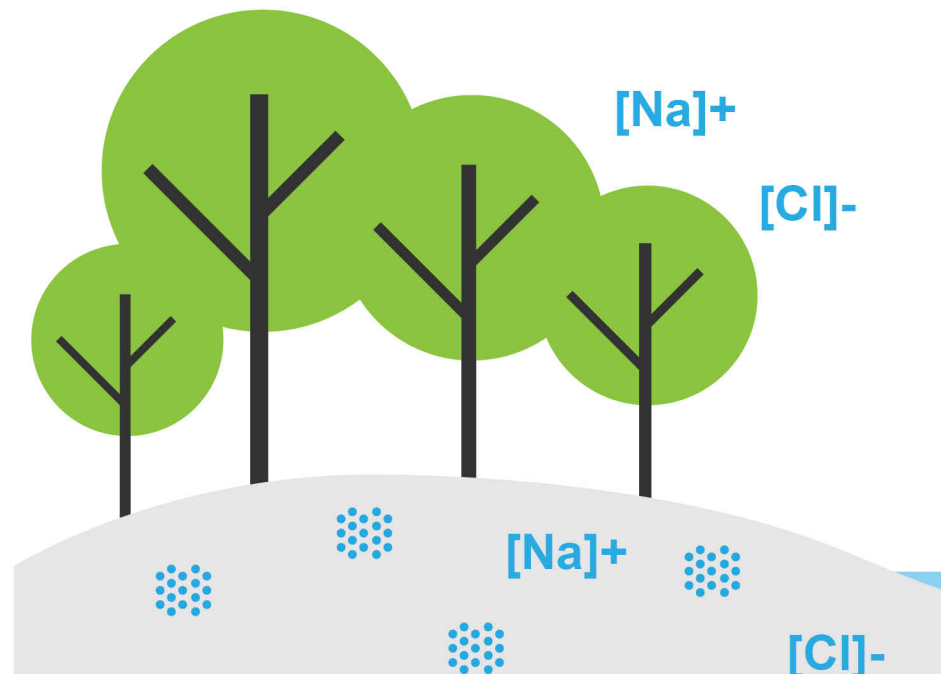
**SPECIES DIVERSITY**



**HABITAT**



**MAINTENANCE & CARE**



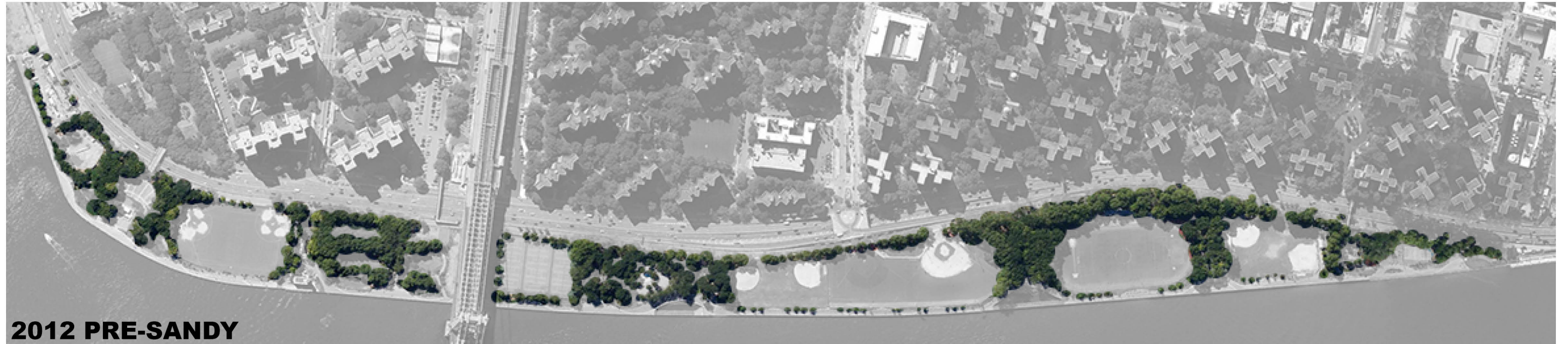
**SALT SPRAY**



**WIND**



# POST-SANDY CANOPY CHANGE





# PLANTING CONCEPT



**HOUSTON AREA**  
CURRENT PLAN




# PLANTING CONCEPT



RENDERING DEPICTS 2015 MEAN HIGHER HIGH WATER

**HOUSTON AREA**  
CURRENT PLAN

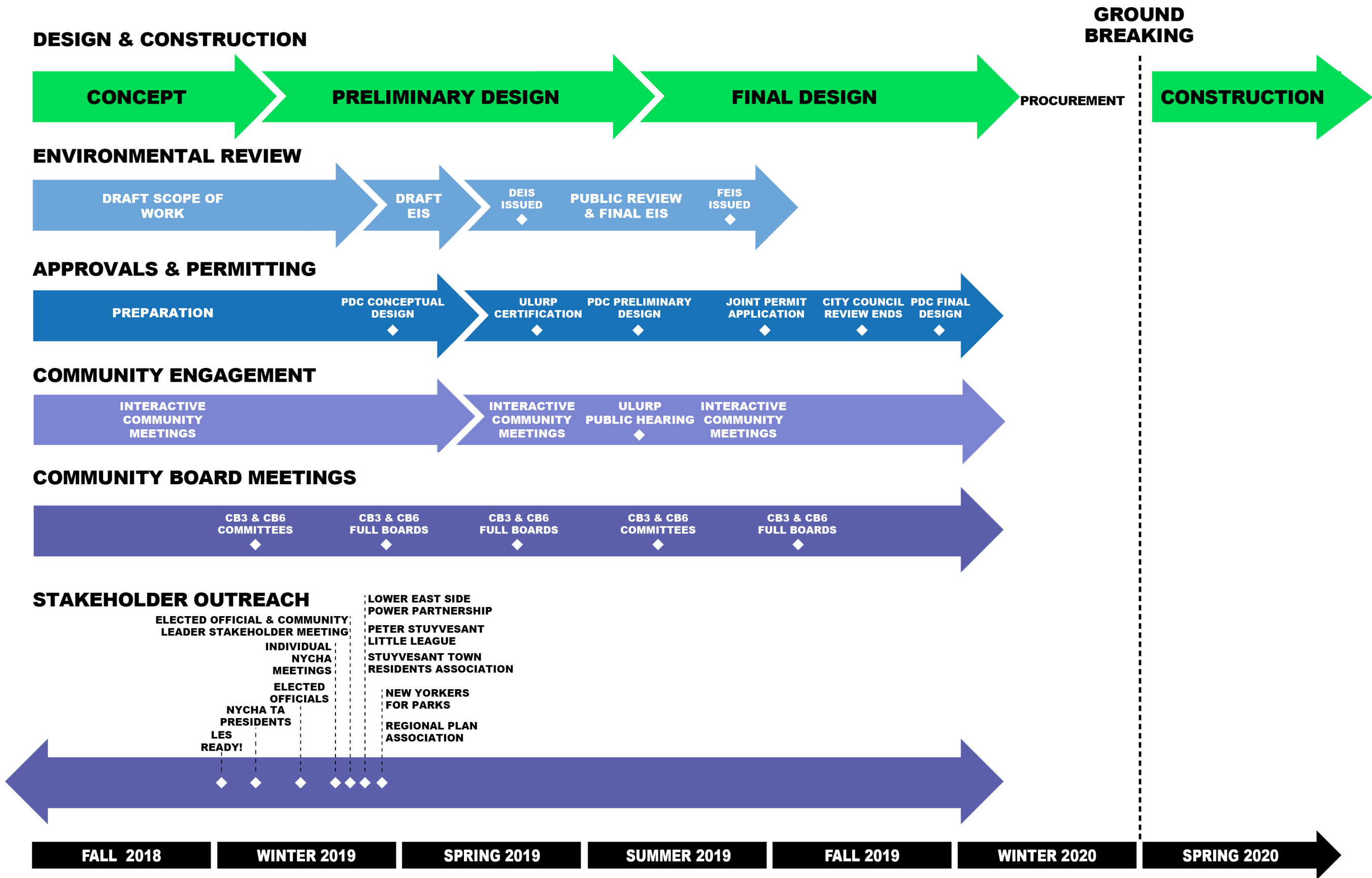


An aerial photograph of a city, likely New York City, showing a dense urban grid, a river, and a suspension bridge. The image is overlaid with a semi-transparent teal gradient. The text "COMMUNITY ENGAGEMENT SCHEDULE" is centered in white, bold, sans-serif capital letters.

# **COMMUNITY ENGAGEMENT SCHEDULE**

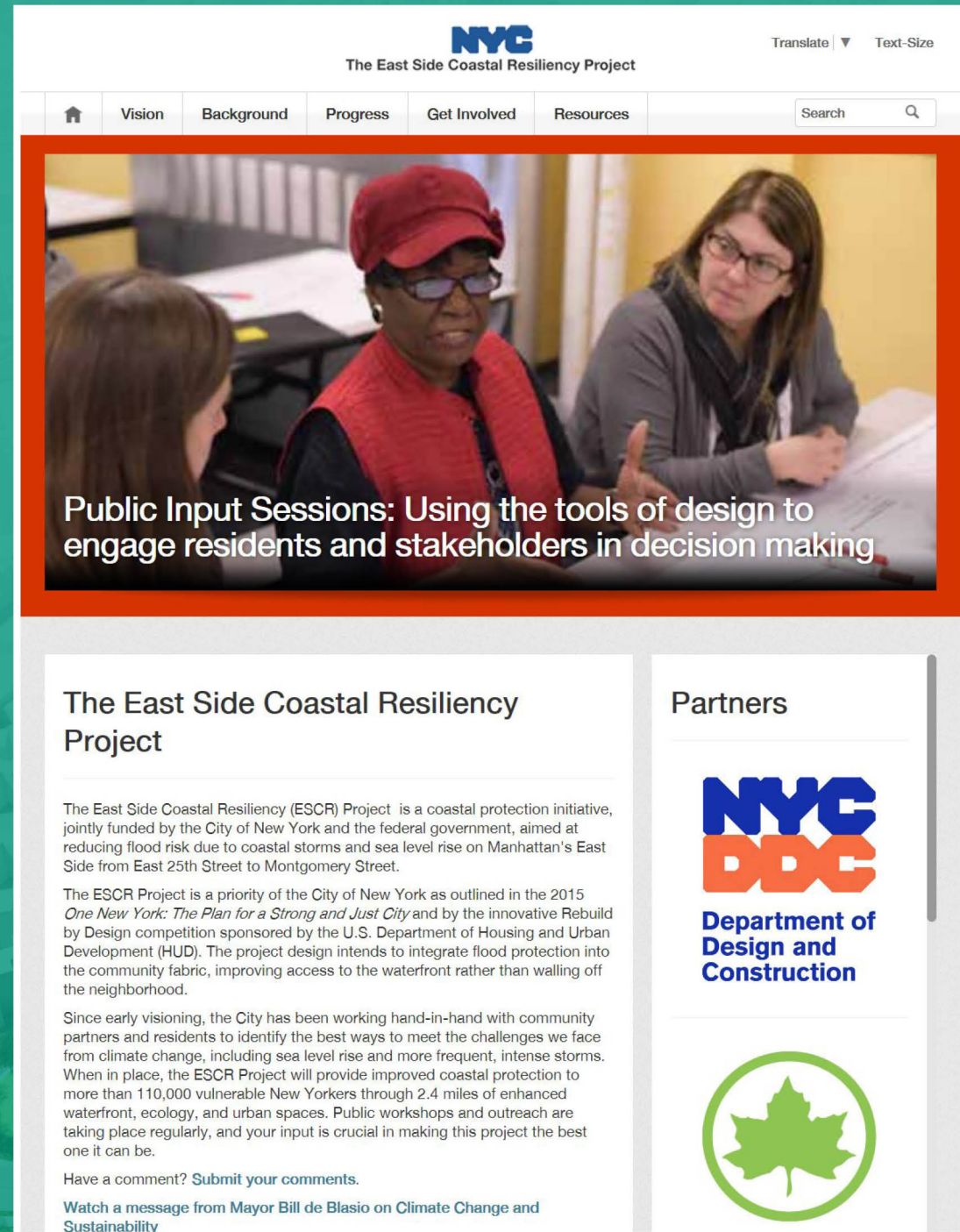


# OVERVIEW OF OUTREACH AND ENGAGEMENT





# Website



**Visit Us!**  
**[www.nyc.gov/escr](http://www.nyc.gov/escr)**  
Twitter: **@NYClimate**



An aerial photograph of a city, likely New York City, showing a dense urban grid, a river, and a bridge. The image is overlaid with a teal color. The text "Q+A" is centered in the middle of the image.

# Q+A