



Project Area 2 South Area (14th to 18th Street): Existing Context



Riis Houses



FDR



FDR Sidewalk



East River Greenway

Con Edison Tie-In



Existing



Final Concept Design (July 2016): Gates Open



Final Concept Design (July 2016): Gates Closing



Final Concept Design (July 2016): Gates Closed

FDR Crossing



Existing



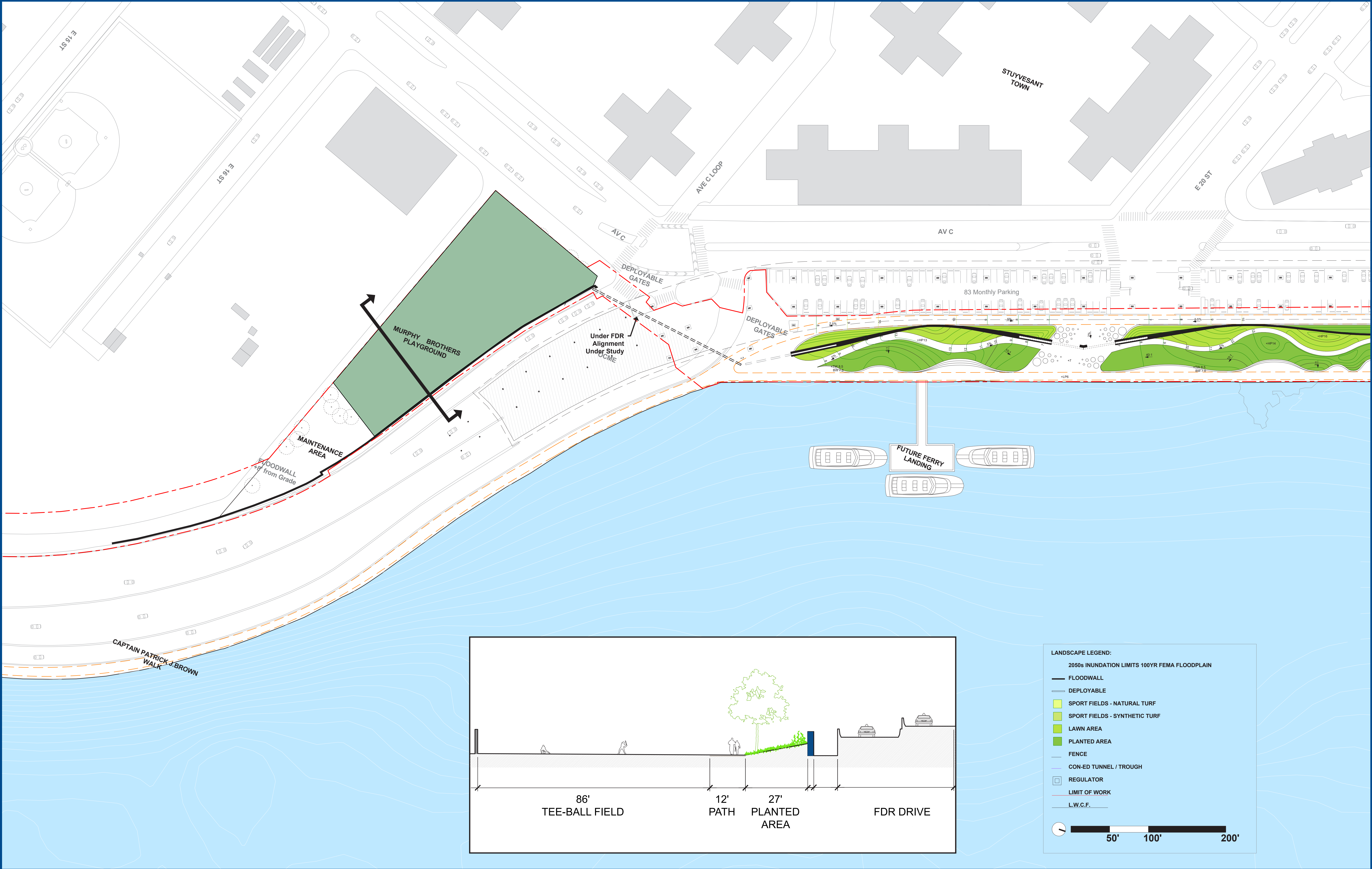
Final Concept Design (July 2016) : Everyday Condition



Final Concept Design (July 2016): Preparation for Storm Event



Final Concept Design (July 2016): Gates Closed



Project Area 2 Avenue C Loop (Avenue C at 18th Street): Existing Context



Under FDR at 18th Street



East River Bikeway



Murphy Brothers Playground



Avenue C and FDR Ramp Intersection

FDR On-Ramp



Existing

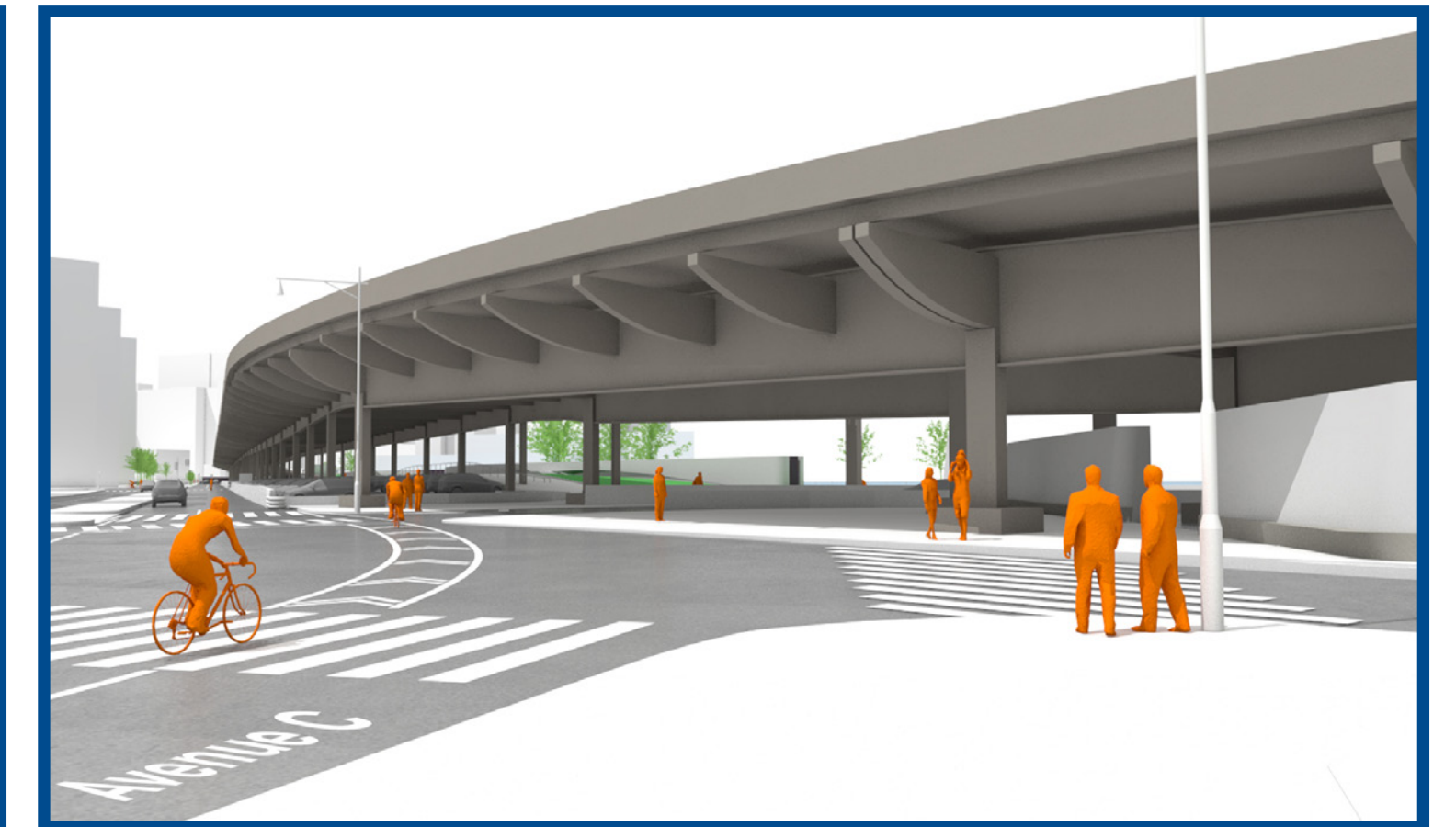
Avenue C & Avenue C Loop



Existing



Final Concept Design (July 2016)



Revised Alignment Option Currently Under Review (Nov 2016)



Final Concept Design (July 2016)

East River Esplanade



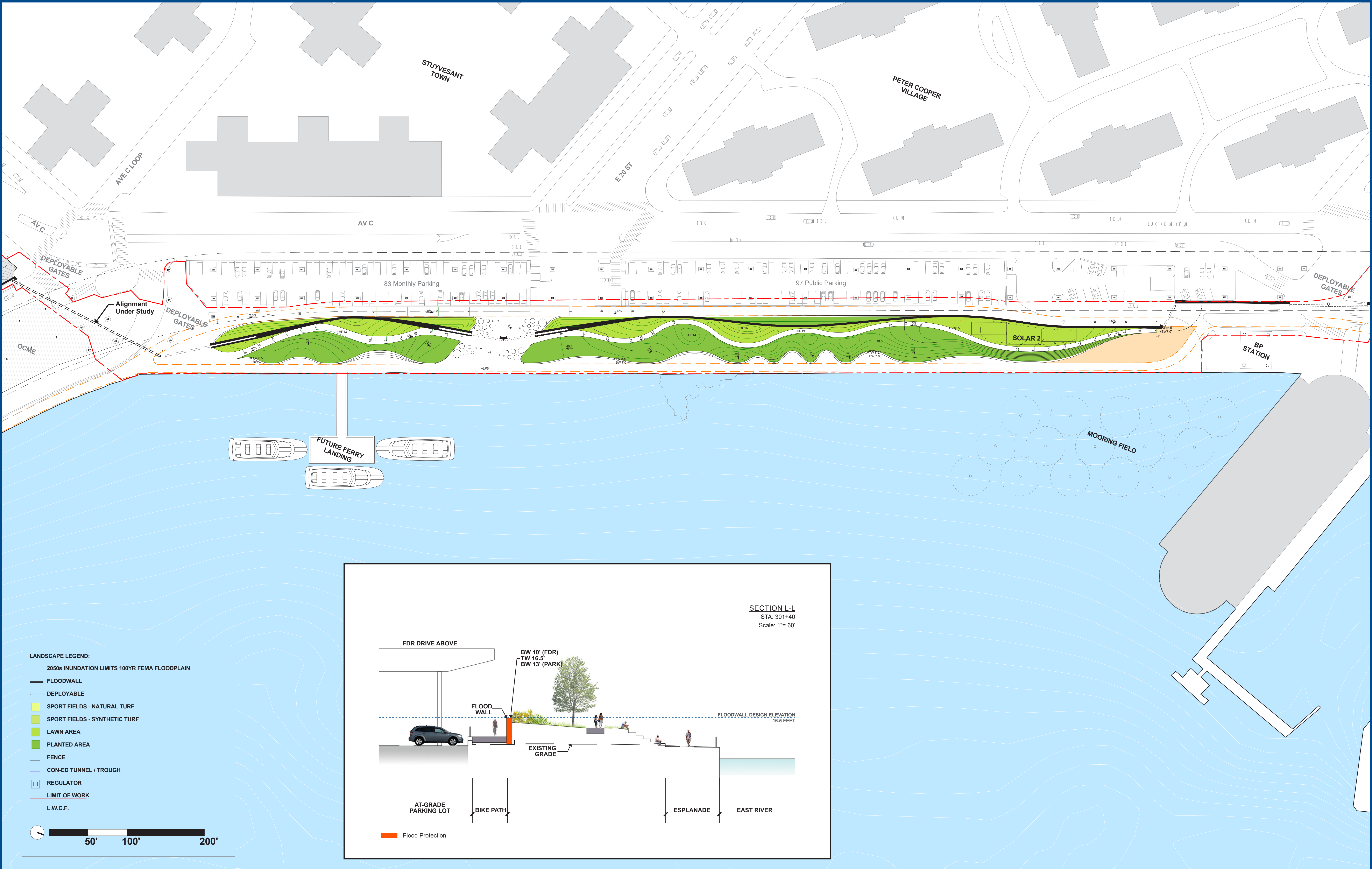
Existing



Final Concept Design (July 2016)



Revised Alignment Option Currently Under Review (Nov 2016)



Project Area 2 Stuyvesant Cove Park (18th Street to 20th Street): Existing Context



Stuyvesant Cove Park



20th Street Parking Entrance



Solar One



Stuyvesant Cove Esplanade Looking South

Stuyvesant Cove Park



Final Concept Design (July 2016) : Daily Condition

East 20th St. Entrance to Park



Existing



Final Concept Design (July 2016) : Gates Open

Southern Entrance to Park from Esplanade



Final Concept Design (July 2016) : Storm Event



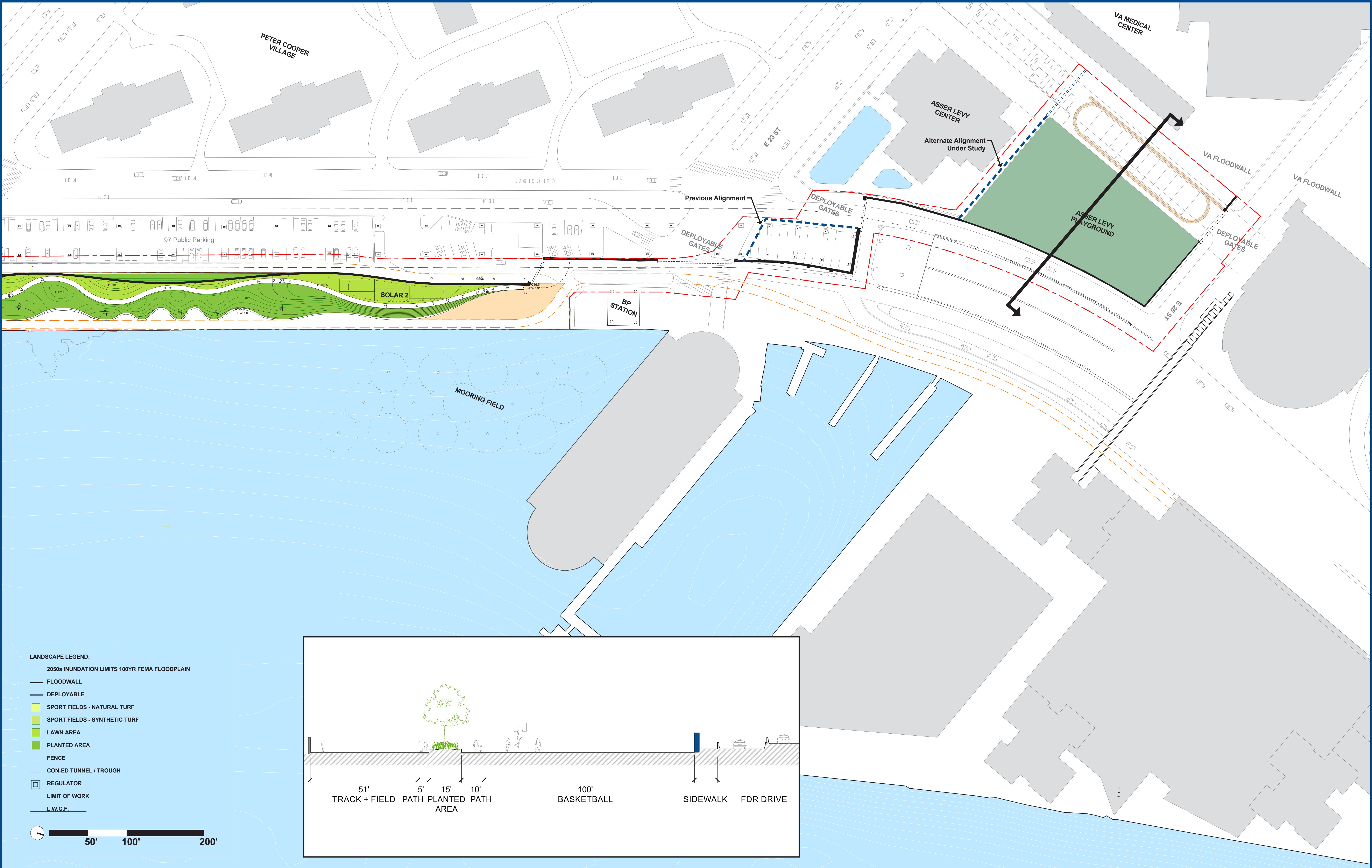
Existing



Final Concept Design (July 2016)



Alternate Currently Under Technical Review



Project Area 2 North Area (23rd Street to 25th Street): Existing Context



Asser Levy Playground



Asser Levy Playground



Asser Levy Pool



23rd St And Avenue C

23rd Street Crossing at Asser Levy



Existing



Final Concept Design (July 2016)



Revised Alignment Under Review (Sept 2016)

23rd Street Crossing at BP Gas Station



Revised Alignment (Sept 2016): Gates Open



Revised Alignment (Sept 2016): Gates Closed

North Entrance to Stuyvesant Cove Park at Bp Gas Station



Existing



Revised Alignment (Sept 2016): Gates Open