

# Neighborhood Development Area Profiles

## Instructions & Guidance

### OBJECTIVE

The goal of your Neighborhood Development Area profile is to help develop funding priorities in your NDA; inform DYCD policies and practices; and identify and connect with additional resources to strengthen your community.



### 1 PROCESS

Your profile is part of DYCD's Citywide Community Needs Assessment, which is one of the most important planning tools utilized by the agency for informing program development. To create your profile, we engaged key stakeholders and members in your community to yield invaluable data regarding needs, access to, and availability of resources.

To conduct this assessment, DYCD used a variety of methods for data collection, with the main device being a series of surveys and public hearings.

## 2

## FORMULATION OF NEEDS

To determine needs in your community, we asked community members the following questions:



What programs and services did you and your household receive within the last 12 months?



What are the programs or services that you and your household were unable to access for any reason within the last 12 months?



What are the programs or services you believe are most needed in your community?

## 3

## PROGRAM & SERVICE RESPONSE OPTIONS



To answer these questions, respondents were provided with 29 program, service, and activity topics as response options:

Adult Education/Literacy  
Afterschool Programs  
Assistance Starting a Business  
Child care/Head Start  
College preparation  
Domestic violence assistance  
Education/Career Counseling  
Emergency Counseling  
English Classes (ESL)  
Eviction Prevention  
Family counseling  
Financial assistance  
Financial education/literacy  
Food and nutrition assistance

Health Care  
Heating/Utility assistance  
Housing Assistance  
Income Tax Assistance  
Interpersonal Conflict Resolution/Mediation  
Job skills/Employment training  
Legal Services  
Other  
Parenting support  
Safety/Crime prevention  
Senior citizen services  
Substance abuse assistance  
Summer recreation services  
Transportation  
Veteran's Services

# 4

## Categorize Data

To make this data actionable, we the grouped these topics into categories as follows:



Food & Nutrition Assistance  
Health Care  
Financial Assistance  
Legal Services  
Transportation  
Heating/Utility Assistance  
Income Tax Assistance  
Housing Assistance  
Safety & Crime Prevention  
Emergency Shelter  
Eviction Prevention  
Substance Abuse Assistance



### Basic Needs

English Classes  
Adult Education/Literacy  
College Preparation  
Financial Education/Literacy



### Education

Education/Career Counseling  
Job Skills/Employment Training  
Assistance Starting a Business



### Employment & Career Advancement

Afterschool Programs  
Summer Recreation



### Out of School Time

Child Care/Head Start  
Domestic Violence Assistance  
Family Counseling  
Parenting Support  
Interpersonal Conflict Resolution/Mediation



### Family Supports

Senior Citizen Services  
Veteran's Services



### Support for Special Populations

5

## Assign Points

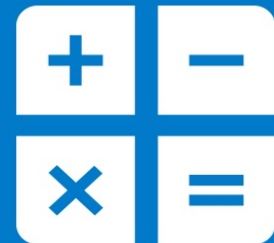
1 \_\_\_\_\_  
2 \_\_\_\_\_  
\_\_\_\_\_  
\_\_\_\_\_

Upon completion of these categorizations, DYCD analyzed the frequency with which each stakeholder selected each program, service, and activity topic. Based on this analysis, we identified the top 10 topics selected by respondents. From there, points were attributed to each category based on the associated topic's ranking. The higher the topic was ranked, the more points were given.

6

## Calculate Needs

Once the points were distributed, a sum was calculated to determine the needs you see in your profile!



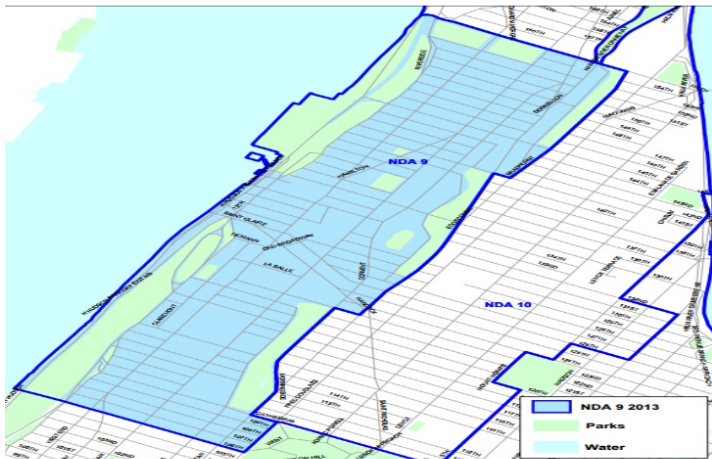


# Community Needs Assessment

Neighborhood Development Area Manhattan 9:  
Morningside Hts. / Manhattanville

## NDA Manhattan 9

## Demographic Profile



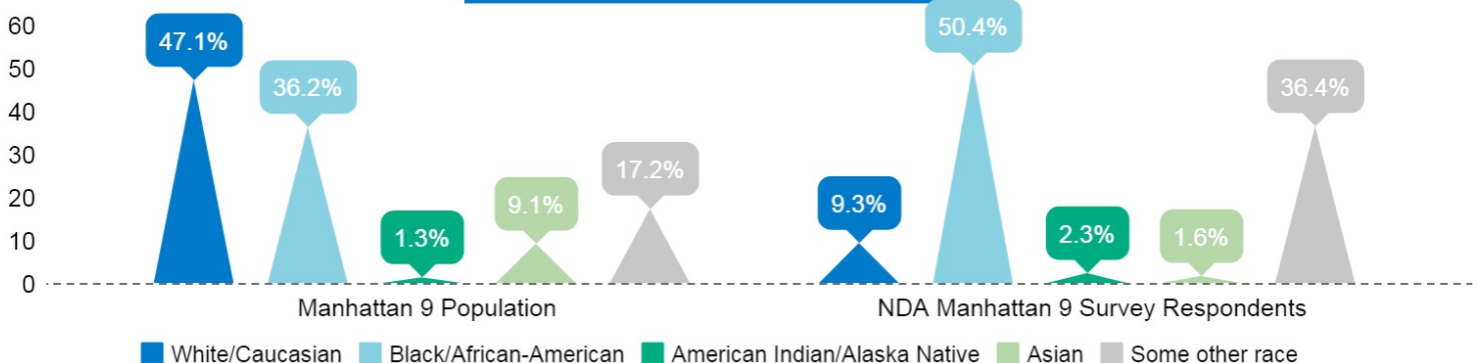
## INTRODUCTION

Overall, 188 people in NDA Manhattan 9 participated in the Community Needs Assessment Adult Survey. The average age of survey respondents was 44. In terms of gender, 71 percent of respondents selected Female and 29 percent selected Male.

## NDA Manhattan 9 Population Snapshot

Total Population	130,249
Total Population, 18 Years Old +	109,200
Population below poverty level	27.9%

## Race



## Top Languages Spoken at Home\*

### Manhattan 9 Population

- Spanish
- Chinese
- French

### NDA Manhattan 9 Survey Respondents

- Spanish
- Creole
- Russian

## Ethnicity

### Hispanic/Latino Origin

Manhattan 9 Population: 38.5%

NDA Manhattan 9 Survey Respondents: 58%

## Population

33.8%

Foreign Born

\*Other than English

## NDA Manhattan 9

# Program, Service & Activity Needs



# UNMET NEED

## ADULTS IN NDA Manhattan 9

### SUMMARY OF NEEDS

With respect to programs, services, and/or activities under the CNA categories:

Respondents indicated that those categorized as Basic Needs and Education were identified as most "utilized," "needed, but not received," and most "needed" in their community.

Although respondents indicated that those categorized as Family Supports were among the most "needed, but not received," they were not among the most "utilized" or "needed" in their community.

### STAKEHOLDER INPUT

#### Public Hearings:

The most referenced issues that emerged from a public hearing conducted by DYCD in NDA Manhattan 9 on January 19, 2017 were crime/safety, housing/homelessness, and immigrant supports.

### Utilization Trends

Programs, services, and/or activities that respondent and their household members received within the last 12 months

**#1**  
Basic Needs

**#3**  
Employment & Career  
Advancement

**#2**  
Education

### Service Gaps

Programs, services, and/or activities that respondent and their household needed, but did not receive within the last 12 months



**#1**  
Basic Needs



**#2**  
Education



**#3**  
Family Supports

## Community Needs

Programs, services, and/or activities that respondents believe is most needed in NDA Manhattan 9



**#1**  
Basic Needs



**#2**  
Education



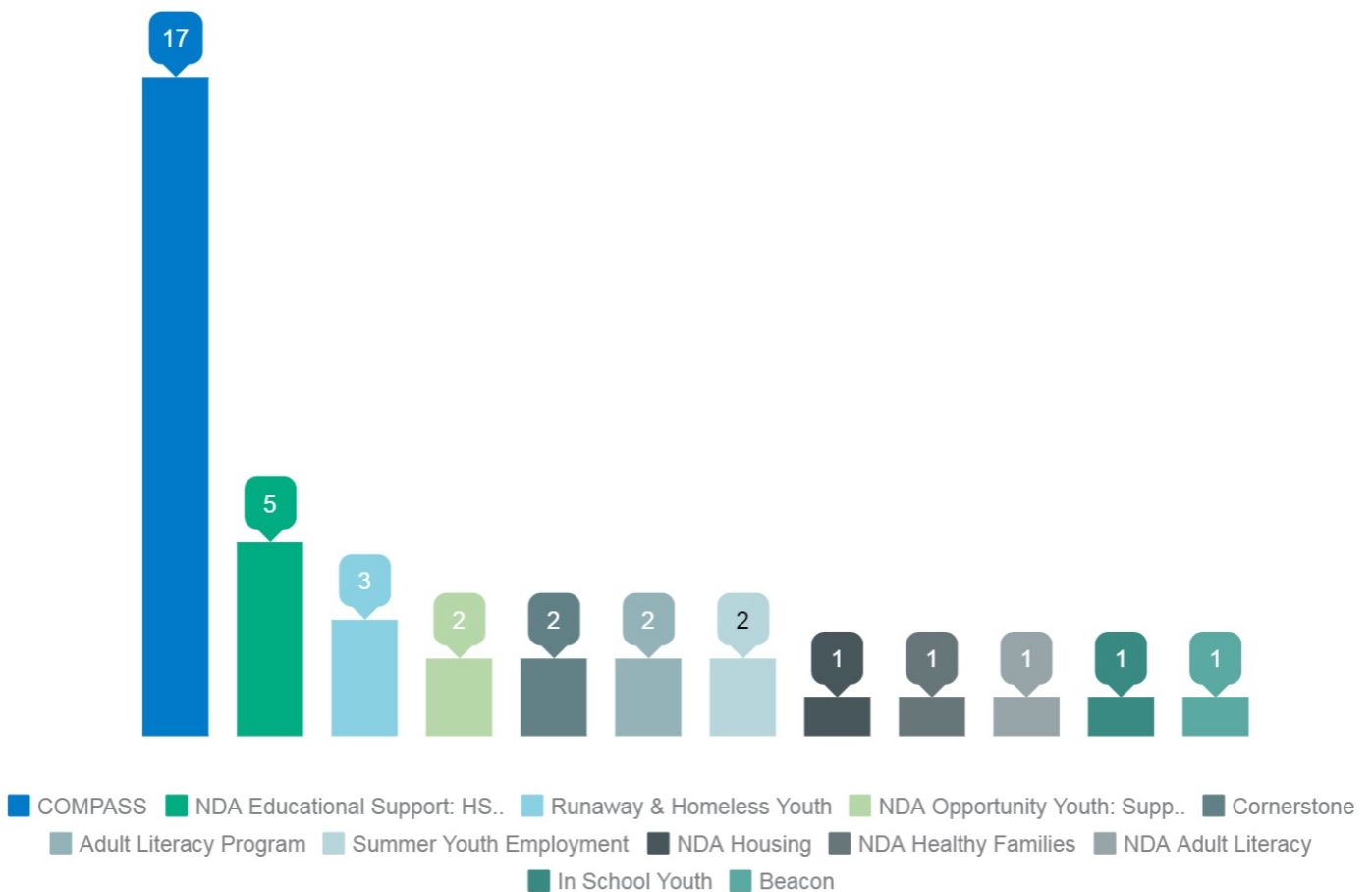
**#3**  
Out of School Time

### NDA Manhattan 9

## Resources Available in Your NDA



## DYCD Programs in Manhattan 9





## Other City Agencies\*\*\*\*



### Basic Needs



Mayor's Office of Immigrant Affairs  
Administration of Children's Services:  
- Juvenile Justice Program

Department for the Aging:  
Home Delivered Meals & In-Home Services  
Department of Health & Mental Hygiene:  
- NYC Teens Connection  
- Family Resource Centers

Human Resources Administration:  
- Cash Assistance  
Supplemental Nutrition Assistance (SNAP)  
- Office of Child Support Enforcement  
Office of Citywide Health Insurance Access



### Education



Department of Consumer Affairs:  
- Office of Financial Empowerment

Department of Education  
- Living for the young family  
through Education Program  
- Division of English Language  
Learners



### Employment & Career Advancement



Department for the Aging:  
- Job Training & Advocacy

Department of Small  
Business Services:  
- Workforce 1 Career Center  
Community Partners Program  
Human Resources Administration  
- Employment Services



### Family Supports



Human Resources Administration  
- Domestic Violence Support  
- Office of Child Support Enforcement

Department for the Aging:  
- Elder Abuse & Crime Victim Services

Department of Health & Mental Hygiene:  
- District Public Health Offices  
- Newborn Home Visiting Program  
- Nurse Family Partnership

Administration for Children's Services  
- Adult Protective Services  
- Preventive Services  
- Keeping Children Safe

Mayor's Office to Combat Domestic Violence  
- Healthy Relationship Training Academy



### Supports for Special Populations



Department for the Aging  
- General Office  
- Senior Centers

Social Security Administration

Department of Finance  
- Senior Citizen Rent Increase Exemption  
- Disability Rent Increase Exemption



## SUPPLEMENTARY DATA MANHATTAN NDA 9

**What are the programs or services that you and your household received within the last 12 months?**

Manhattan NDA 9: Activity, Program, or Service: Needed and Received	
<b>Housing Assistance</b>	<b>12%</b>
<b>Food and Nutrition Assistance</b>	<b>11%</b>
<b>Health Care (Dental, Medical, Mental Health Services)</b>	<b>11%</b>
Adult Education/Literacy	10%
Job Skills/Employment Training	9%
Afterschool Programs	9%
Financial Assistance	9%
Legal Services	8%
Child Care/Head Start	7%
English Classes	6%
Emergency Shelter	6%
Transportation	4%
Education/Career Counseling	3%
Summer Recreation	3%
College Preparation	2%
Income Tax Assistance	2%
Domestic Violence Prevention	2%
Assistance Starting a Business	1%
Eviction Prevention	1%
Financial Education/Literacy	1%
Heating/Utility Assistance	1%
Parenting Support	1%
Safety/Crime Prevention	1%
Senior Citizen Services	1%
Family Counseling	0%
Interpersonal Conflict Resolution/Mediation	0%
Veteran's Services	0%
Substance Abuse Assistance	0%

## SUPPLEMENTARY DATA MANHATTAN NDA 9

**What are the programs or services that you and your household were unable to access for any reason within the last 12 months?**

Manhattan NDA 9: Activity, Program, or Service: Needed, but Did Not Receive	
<b>Housing Assistance</b>	<b>22%</b>
<b>English Classes</b>	<b>9%</b>
Child Care/Head Start	5%
Financial Assistance	5%
Senior Citizen Services	5%
Job Skills/Employment Training	4%
Adult Education/Literacy	3%
Legal Services	2%
Afterschool Programs	2%
Emergency Shelter	2%
Parenting Support	2%
Transportation	2%
Education/Career Counseling	1%
Family Counseling	1%
Financial Education/Literacy	1%
Income Tax Assistance	1%
Safety/Crime Prevention	1%
Substance Abuse Assistance	1%
College Preparation	1%
Domestic Violence Prevention	1%
Food and Nutrition Assistance	1%
Health Care (Dental, Medical, Mental Health Services)	1%
Interpersonal Conflict Resolution/Mediation	1%
Summer Recreation	1%
Assistance Starting a Business	0%
Eviction Prevention	0%
Heating/Utility Assistance	0%
Veteran's Services	0%

## SUPPLEMENTARY DATA MANHATTAN NDA 9

**What are the programs or services that you believe are most needed in your community?**

<b>Manhattan NDA 9: Activity, Program, or Service: Most Needed in the Community</b>	
<b>Housing Assistance</b>	<b>32%</b>
<b>English Classes (ESL)</b>	<b>20%</b>
<b>Afterschool Programs</b>	<b>15%</b>
Child care/Head Start	13%
Senior citizen services	13%
Legal Services	11%
Adult Education/Literacy	9%
Job skills/Employment training	9%
Eviction Prevention	7%
Financial assistance	6%
Summer recreation services	5%
College preparation	4%
Parenting support	4%
Health Care	4%
Substance abuse assistance	4%
Assistance Starting a Business	3%
Domestic violence assistance	3%
Education/Career Counseling	3%
Food and nutrition assistance	3%
Income Tax Assistance	3%
Other	3%
Safety/Crime prevention	3%
Emergency Shelter	3%
Transportation	3%
Interpersonal Conflict Resolution/Mediation	2%
Family counseling	2%
Financial education/literacy	2%
Heating/Utility assistance	2%