

INSPECTION OF THE CELLULAR COFFERDAMS AT THE SOUTHWEST BROOKLYN MARINE TRANSFER STATION



December 2025

New York City Department of Sanitation

- No text on this page -

Inspection of the Cellular Cofferdams at the Southwest Brooklyn Marine Transfer Station

In compliance with the New York State Department of Environmental Conservation (NYSDEC) – Part 360 Permit – NYSDEC Permit # 2-6106-00002/00022 Ren 3 Mod 0, dated July 31, 2017, for the New York City Department of Sanitation (DSNY) Southwest Brooklyn Marine Transfer Station (SWBMTS), the Bureau of Solid Waste Management - Export Engineering and Operations team inspected the level of sand in the cellular cofferdam through ports located on the pier area of the facility. The SWBMTS is located at 400 Bay 41st Street, Brooklyn, NY between 25th Avenue and Bay 41st Street (Figure 1). The purpose of this inspection was to satisfy the NYSDEC permit requirements as is indicated in excerpt item 15 (b) which states:

- b) The Permittee shall check the level of sand fill material in the cellular coffer dams, to ensure that it is at least four feet above mean high water, at five (5) year intervals. If the level of fill is not at least four feet above mean high water, additional sand fill material must be imported to the site, in order to achieve the minimum required level.

Mean high water at this location is Elevation +0.42’.

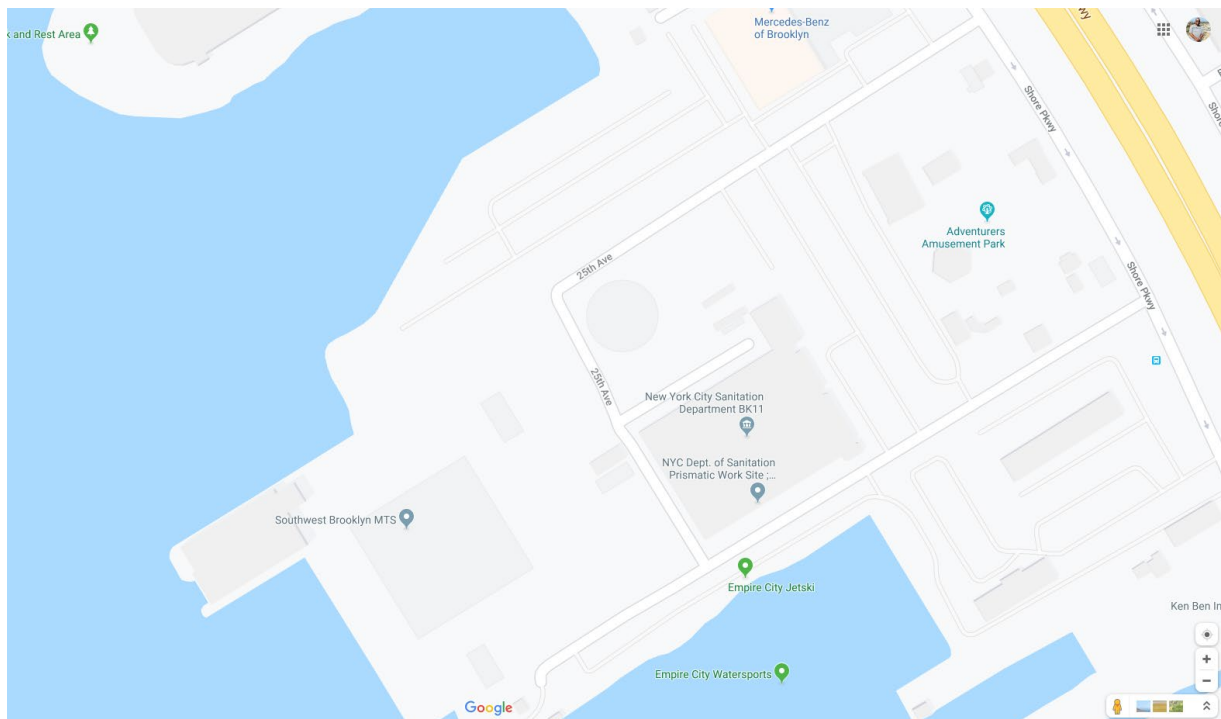


Figure 1 – Vicinity Map

Description of Inspections: On Monday, March 10, 2025, Friday, March 21, 2025, and Thursday, October 24, 2025, DSNY staff from the operations, building maintenance, and engineering units

Southwest Brooklyn Marine Transfer Station Cofferdam Inspection Report

visually inspected the current conditions of the cellular cofferdams sand levels located beneath the pier deck of the SWBMTS as well as along the parking lot located near the waterfront where the cofferdams are located (Figures 2-1 & 2-2).

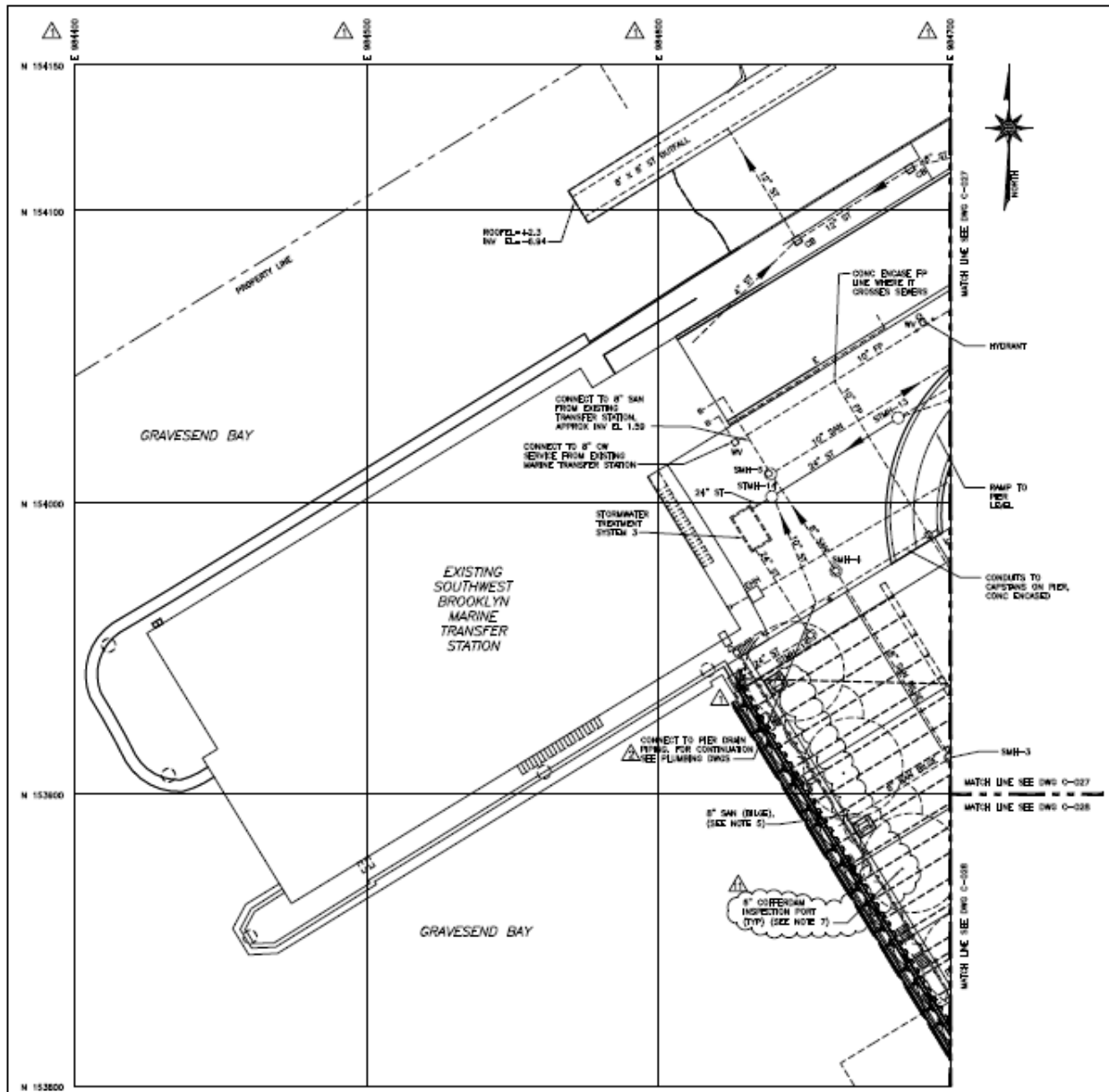


Figure 2-1 - Cofferdam Locations under the Pier Deck and Parking Lot

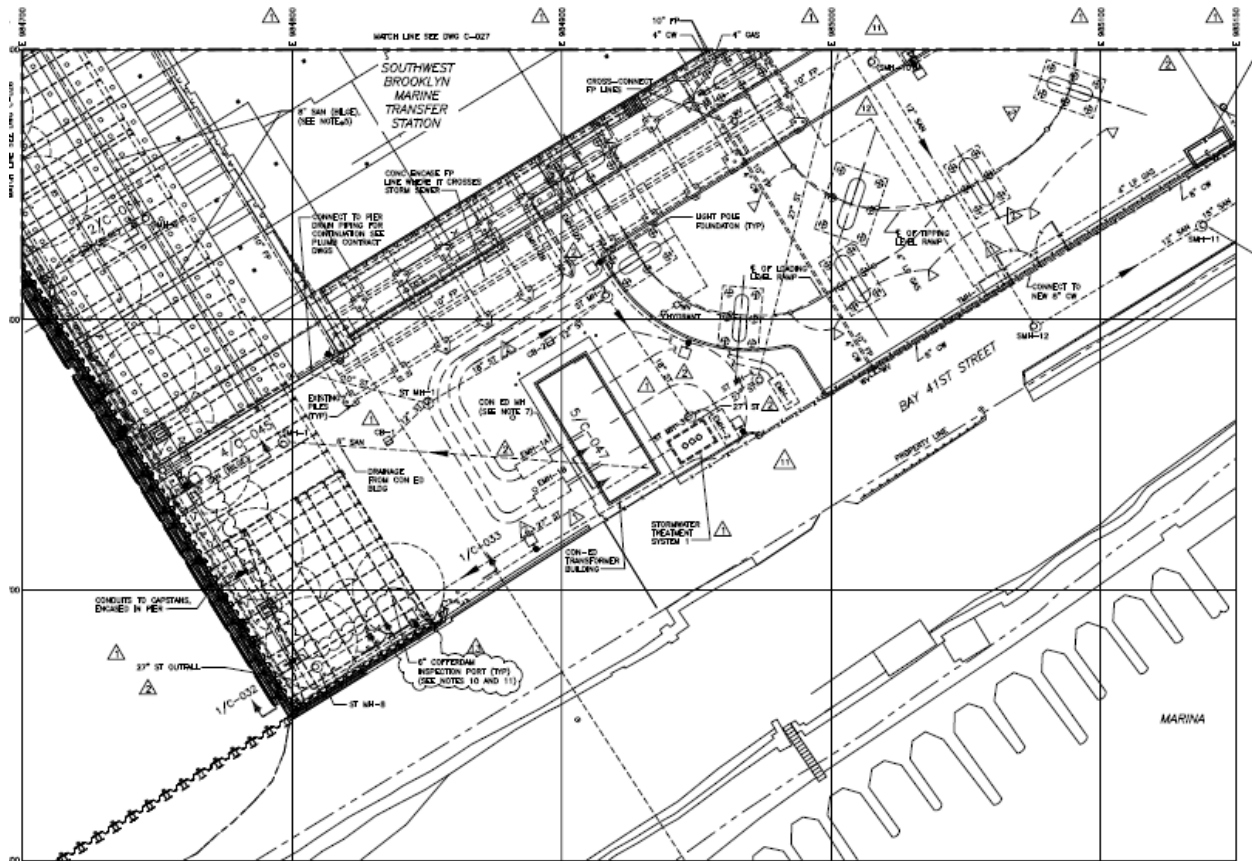


Figure 2-2 - Cofferdam Locations under the Pier Deck and Parking Lot

Southwest Brooklyn Marine Transfer Station
Cofferdam Inspection Report

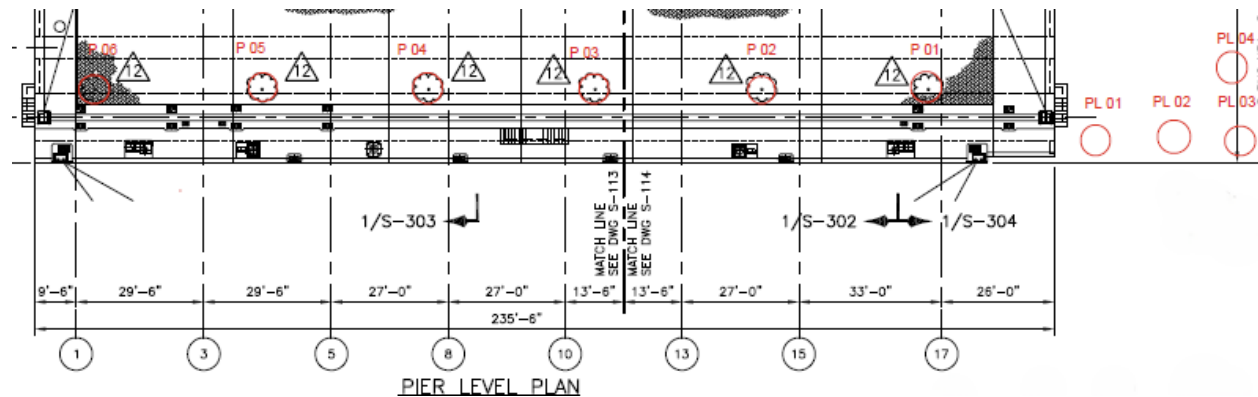


Figure 3 – Ports Located on the Pier Deck and the Parking Lot Areas

During the inspection, each port hole cover was removed and visually inspected and readings were taken of the sand levels in each port by lowering a tape measure into each port hole until it hit the sand fill material. The level of sand fill material in each of cellular cofferdam is maintained at least four (4) feet above the mean high water as shown in the Table 1 – Level of Sand Material in Cofferdams Port Holes.

Table 1 - Level of Sand Material in Cofferdams Port Holes

Port Number	Location	Final Elevation of Sand Height (ft.)	Height Above EL. 0.42' - MHW (ft)
01	Building Portion	5.33	4.91
02	Building Portion	5.04	4.62
03	Building Portion	5.75	5.33
04	Building Portion	5.63	5.21
05	Building Portion	5.38	4.96
06	Building Portion	5.75	5.33
PL 01	Paving Portion	5.04	4.62
PL 02	Paving Portion	5.17	4.75
PL 03	Paving Portion	5.13	4.71
PL 04	Paving Portion	5.21	4.79

Conclusion – As indicated in Table 1 above, all the ports sand fill material levels are over the four (4) feet above mean high water level (EL. 0.42') which complies with the NYSDEC permit.

Southwest Brooklyn Marine Transfer Station
Cofferdam Inspection Report



Photo 1 – Inspection Port on the Pier Deck

Southwest Brooklyn Marine Transfer Station
Cofferdam Inspection Report



Photo 2 – Measurement Tape Lowered into Inspection Port

Southwest Brooklyn Marine Transfer Station
Cofferdam Inspection Report



Photo 3 – Inspection Port with Cover Removed

Southwest Brooklyn Marine Transfer Station
Cofferdam Inspection Report



Photo 4 – Inspection Port on Pier Deck

Southwest Brooklyn Marine Transfer Station
Cofferdam Inspection Report



Photo 5 – Inspection Port on Pier Deck

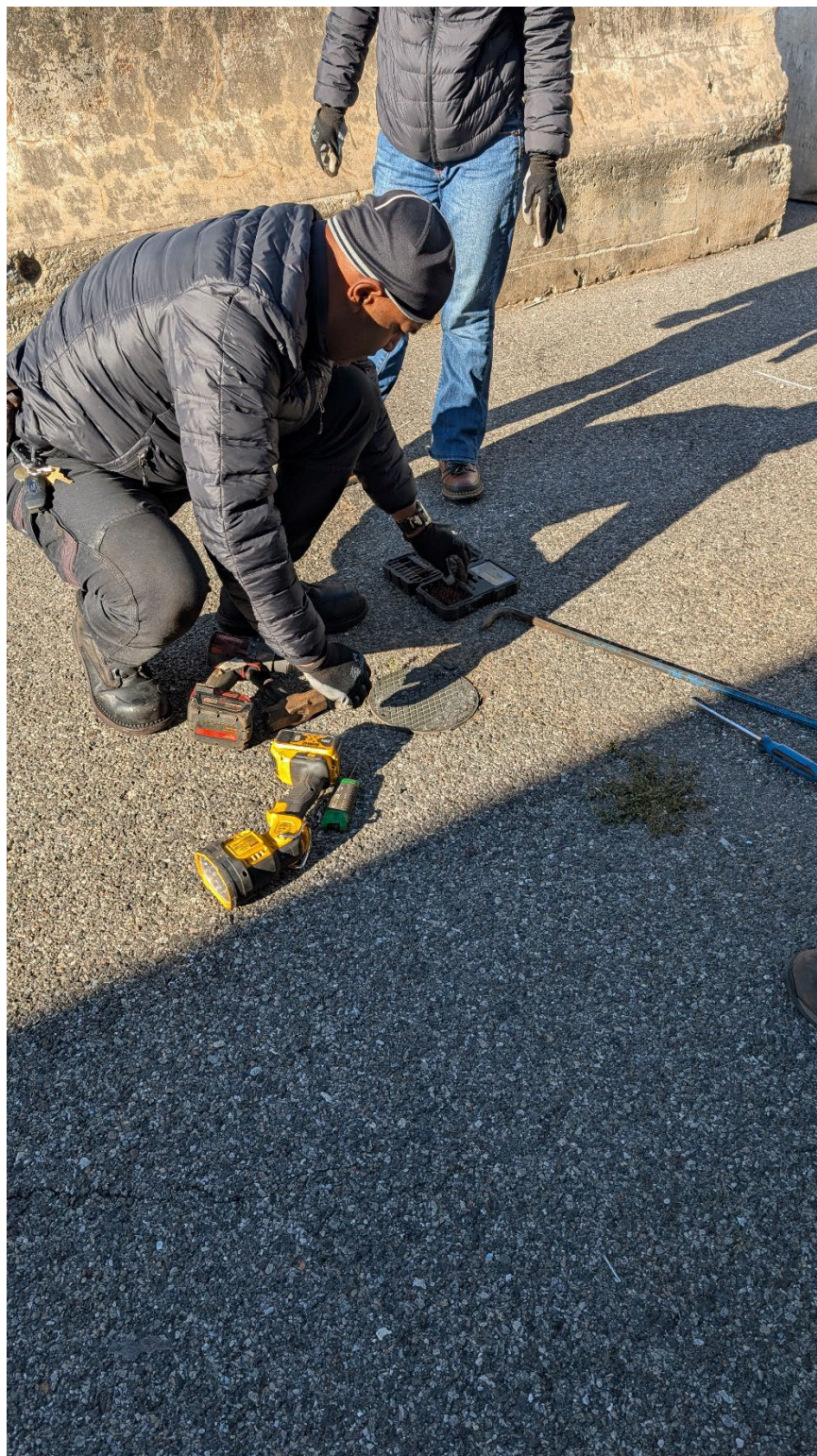


Photo 6 – Inspection of Port Hole in the Parking Lot

Southwest Brooklyn Marine Transfer Station
Cofferdam Inspection Report



Photo 7 – Inspection of the Material in one of the Port Holes in the Parking Lot



Photo 8 – Inspection of Sand Level in a Port Hole in Parking Lot

Southwest Brooklyn Marine Transfer Station
Cofferdam Inspection Report

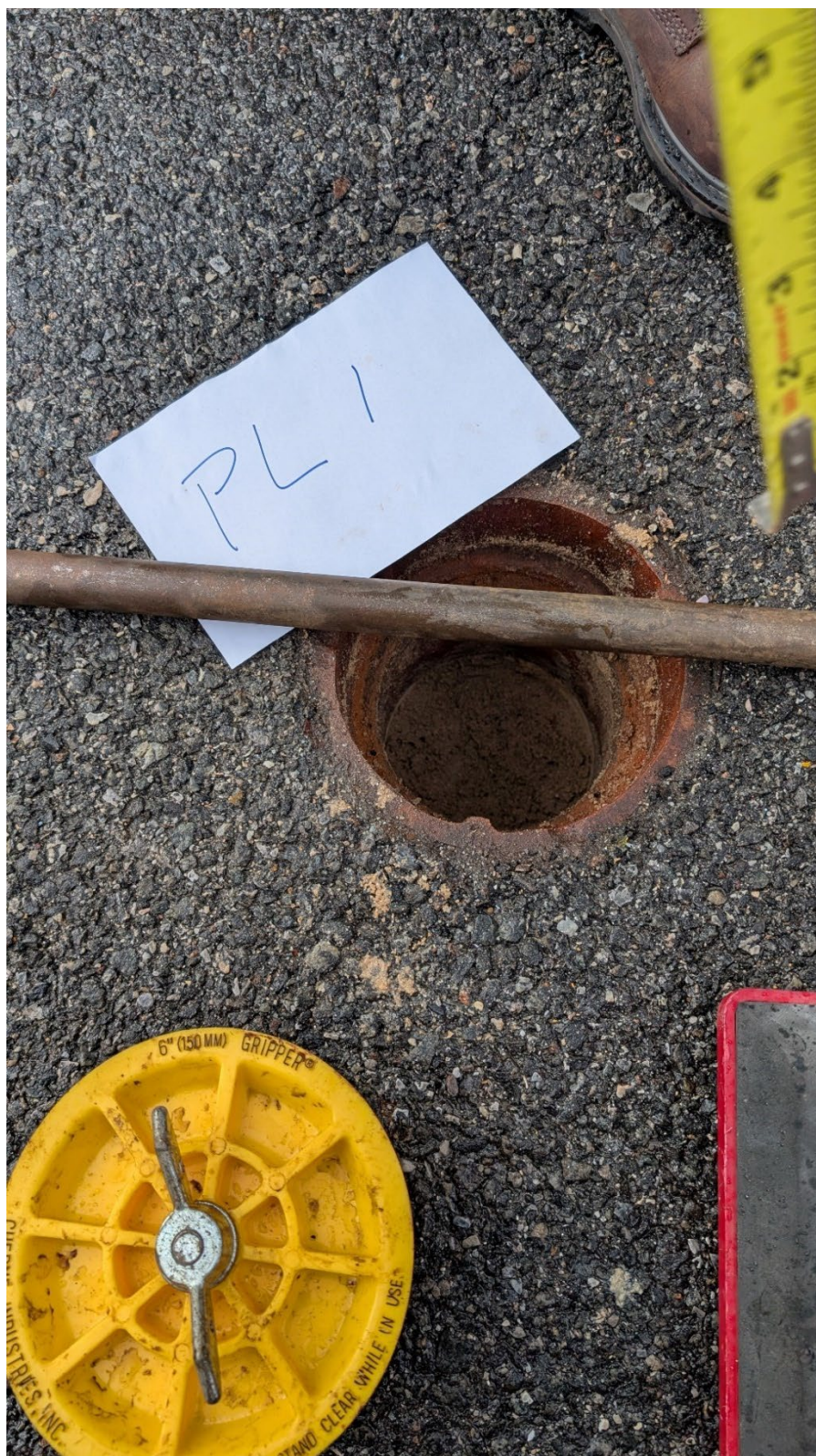


Photo 9 - Measuring Sand Level

- No text on this page -