



**sanitation**

***SPECIFICATIONS  
FOR THE PURCHASE  
OF ROLL ON /  
ROLL OFF  
SELF-COMPACTING  
CONTAINERS***

COLLECTION OPERATIONS – CONTAINERIZATION UNIT  
125 WORTH STREET – ROOM 700  
NEW YORK, NY 10013

[CollectionOperations@dsny.nyc.gov](mailto:CollectionOperations@dsny.nyc.gov)

## 1.0 Scope

---

These specifications cover refuse containers operationally suitable for use with the Roll On / Roll Off container type vehicles used by the New York City Department of Sanitation and shall be guaranteed in writing by the manufacturer to be compatible with these specifications. The purchaser / owner shall in all cases be responsible for the satisfactory interface of container and service vehicle. Container design shall permit complete discharge by gravity without joggling the container by using the operating controls of the truck and without manual assistance of any kind. The maximum container size permitted to be used with this system is a 35 cubic yard minimum.

Prior to implementing Roll-off Container Service, all new containers will be site tested (EMPTY) for compatibility using a Department of Sanitation Roll-on Roll-off vehicle in the presence of a Department of Sanitation Containerized Supervisor.

- Containers are to be built to **(ANSI-Z 245.30)** waste container safety requirements.
- Containers are to be built to **OSHA** standards.
- Container to have 3 inch taper for the entire length of the container.
- Container to have a ram forward option.

*\*Please Note: DSNY **STRONGLY** recommends adhering to the following specifications, however, DSNY understands that there are circumstances where modifications may be possible after consultation with DSNY as part of the Waste Management Plan submittal process.*

## 2.0 Materials of Construction

---

Container floor and walls shall be continuously welded inside and outside. Roof shall be welded continuously outside, and stitch welded inside. All welds and edges shall be grounded smoothly, suitably reinforced with steel structural members welded in place and shall meet minimum Department of Sanitation structural standards as shown on the Department of Sanitation reference drawings and as detailed below.

- **OVERALL WIDTH:** Shall not exceed 96 inches
- **OVERALL HEIGHT:** Shall not exceed 96 inches (as measured from the bottom of the rails)
- **OVERALL CHASSIS LENGTH:** Shall be 23 feet (not including container nose rollers)

## 3.0 Minimum Structural Specifications

---

The information listed below are the **MINIMUM** specifications for the construction of DSNY compliant containers.

- **HEAD SHEET PANELS:** Upper Side, top, and head sheet panels shall be of high tensile sheet steel (45,000 P.S.I., tensile strength) 10 gauge or heavier.
- **LOWER SIDE SHEET PANEL:** (45,000 P.S.I.) to be 7 gauge or heavier.
- **FLOOR:** Seven (7) gauge minimum steel plate, full length of container, two piece maximum, floor to be leak proof.
- **CROSS MEMBERS:** Under the floor shall be 3 inch channels, 3.5 lb. Minimum, C-channels on 16 inch centers.
- **FRONT AND REAR ROLLERS:** Shall be constructed from standard black pipe, minimum schedule 40 and shall be 8 inches in diameter with grease fittings.
- **LONG RAILS:** Shall be 6 inches x 2 inches steel tubing, minimum 1/4 inch wall thickness, one piece construction.
- **FRONT NOSE ROLLERS:** Shall be 4 inch, O.D. x 6 inch long with grease fittings. Hollow cast rollers not acceptable.
- **TAILGATE DOOR:** Shall be 10-gauge high tensile steel reinforced, with two 1/4" x 6" vertical plate stiffeners for full height of door with 1/2" inch steel plate hinges with 1 1/16" inch pins and grease fittings. Pin to be removable with cotton pin.
- **FRAMING:** Tailgate to be surrounded with 3 inches x 6 inches x 3/16 inch rectangular tube.
- **SAFETY CHAIN:** Shall be included to secure the door in the open or closed position, 3/8" minimum. Safety chain to be part of pin and sleeve assembly, attached to the container body side to provide positive door attachment in an open position and plus provide additional door closed safety lock in case of tailgate latch failure.
- **TAILGATE LATCH/GASKET:** Shall ensure a tight fit in conjunction with appropriate full door seal that shall prevent liquid leakage from the container. Gasket must be replaceable type. \*Manually operated ratchet style latches shall be located on both sides of the container tailgate.
- **TAILGATE OPENINGS:** Shall be full height and width of container above the sump. (Design of the hinges shall permit clean dumping of the container. Door must have automatic door latches.)
- **CONTAINER HOOK:** Shall be a 1 1/2" inch plate
- **HOOKPLATE:** Shall be 1 inch plate with hook welded to both sides of plate
- **PUSH PLATE:** Shall be 7/16 inch, steel plate, 18 inches x 66 inches minimum, hinged and pinned to provide access and protection for compacting head. Locking pin and clip to be tethered.
- **SIDES OF ROOF AND HEAD BRACES:** Shall be (45,000 psi) 10-gauge minimum, high tensile strength at 24 inch on center for rectangular containers only.
- **SIDES OF BODY:** Containers shall have no less than two horizontal V crimps in the metal equally spaced running the full length of the container. Horizontal structural stiffeners may be substituted in lieu of V crimps. Statement applies to rectangular containers only.
- **PAINT:** Container shall be scraped, all sharp edges, prepped, primed, and painted Green in single stage manufacturer's standard enamel, to prevent corrosion.
- **STENCIL:** Containers must have the site name stenciled on both sides of the container in 8-inch lettering and numbered if more than one.

- **SAFETY STENCIL:**
  - “**WARNING**” On all four sides in 3-inch white letters.
  - “**STAND CLEAR WHEN CONTAINER IS OFF GROUND**” On all four sides, in 1 1/2 inch, white letters under “**WARNING.**”

**WARNING**  
**STAND CLEAR WHEN**  
**CONTAINER IS OFF GROUND**

- **CONSPICUITY TAPE:** 3M #980-32, Red/White. Install conspicuity tape around the entire upper rim of the container and the entire circumference of the tailgate. All corners to have angled 12” x 12” White tape
- **IDENTIFICATION PLATE:** Each container shall be affixed with a stamped metal plate bearing the name and address of the manufacturer, the net internal capacity (cubic yards), unladen weight (can be a separate plate), and a unique serial number. The serial number is also to be welded on the main rails.

## 4.0 Certification of Container by Manufacturer

---

The purchaser shall obtain from the supplier a certificate stating the container complies with these DSNY specifications and submit it to the:

[CollectionOperations@dsny.nyc.gov](mailto:CollectionOperations@dsny.nyc.gov)

- The certificate shall contain the following information:
  - Container size and tare weight
  - Site name and address
  - One copy of this certificate shall be retained by the site and made available to the DSNY supervisor.

*NOTE: Failure to send the required certificate will delay the site from receiving containerized service.*

# **DSNY CONTACT INFORMATION**

## **Containerization Officer**

646-885-4683 / 4827

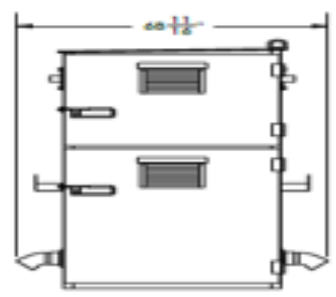
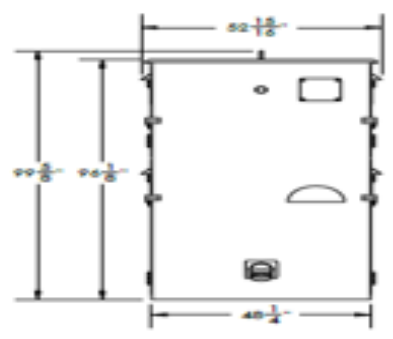
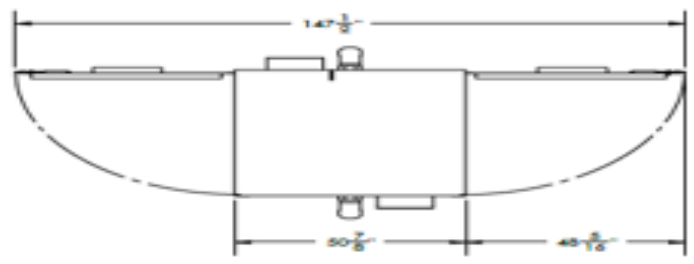
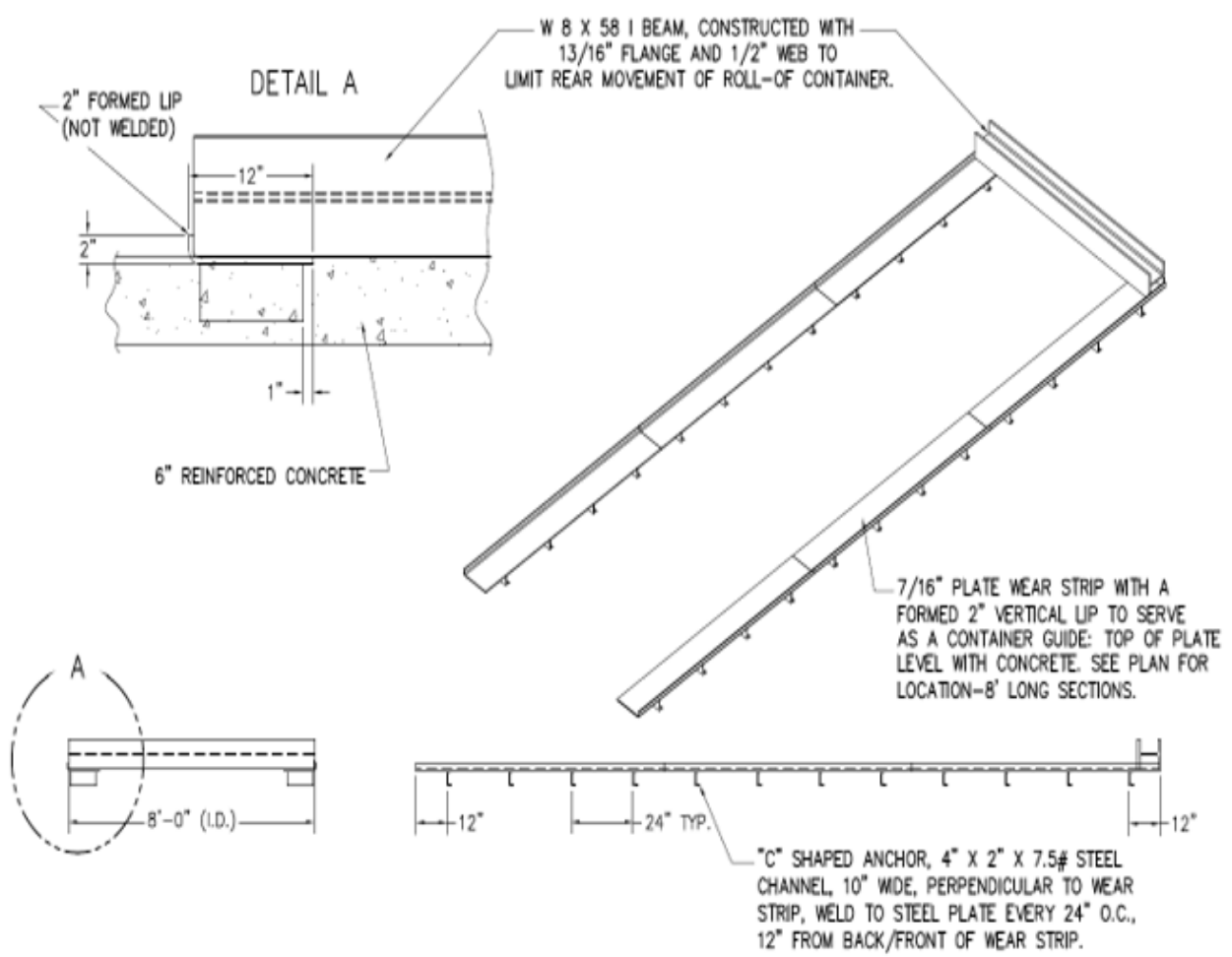
## **Liability Insurance**

646-885-4832

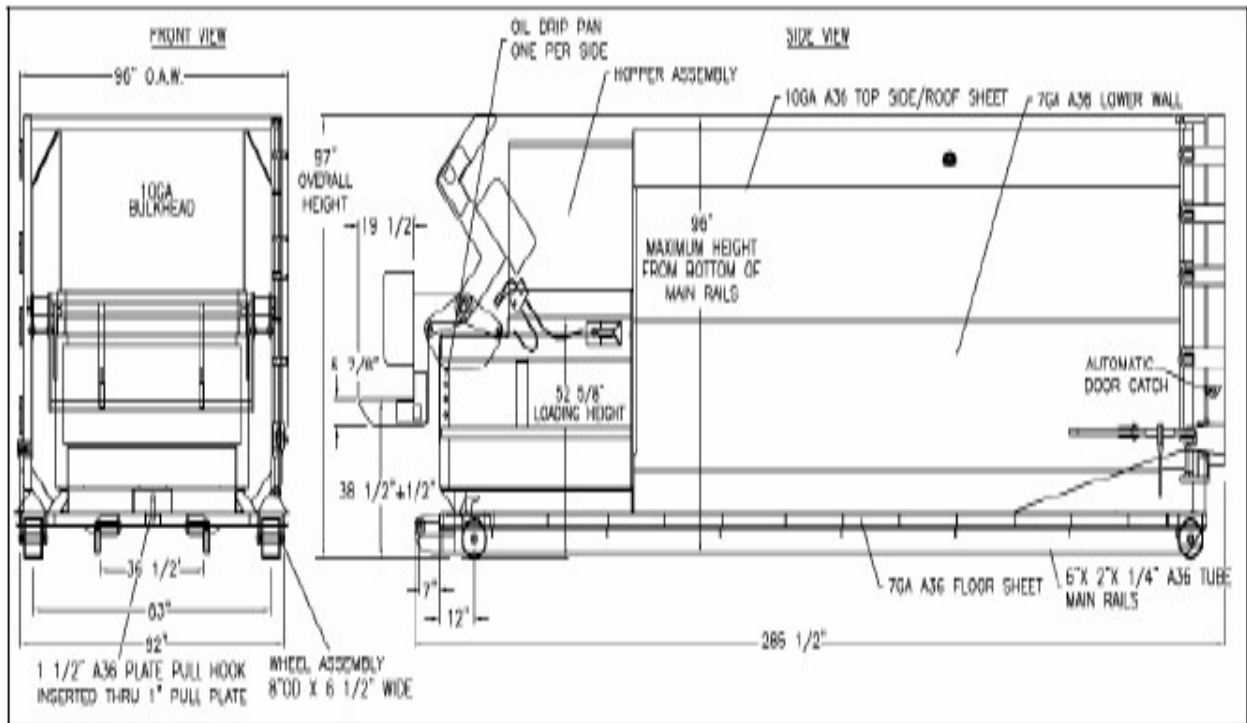
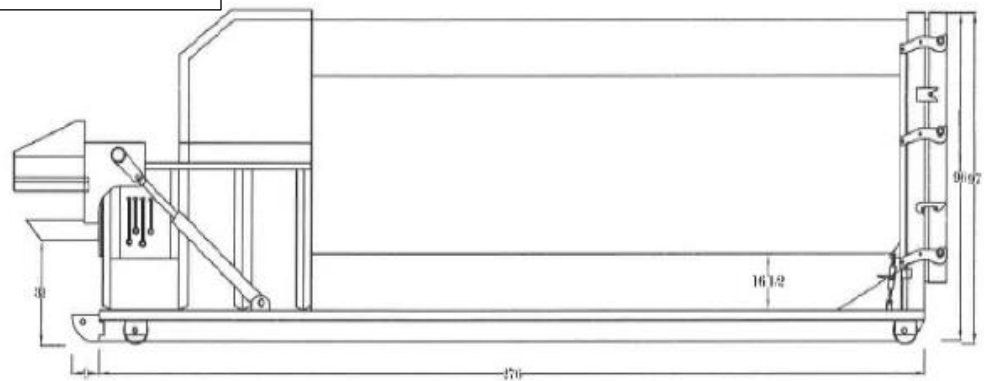
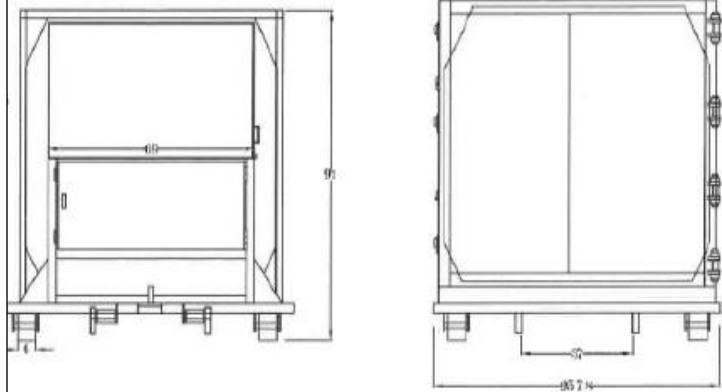
## **New Service Desk**

646-885-4828





**PLEASE SEE THE FOLLOWING EXAMPLES OF TYPICAL FRONT LOADING 30-CU.YD. COMPACTING CONTAINERS**

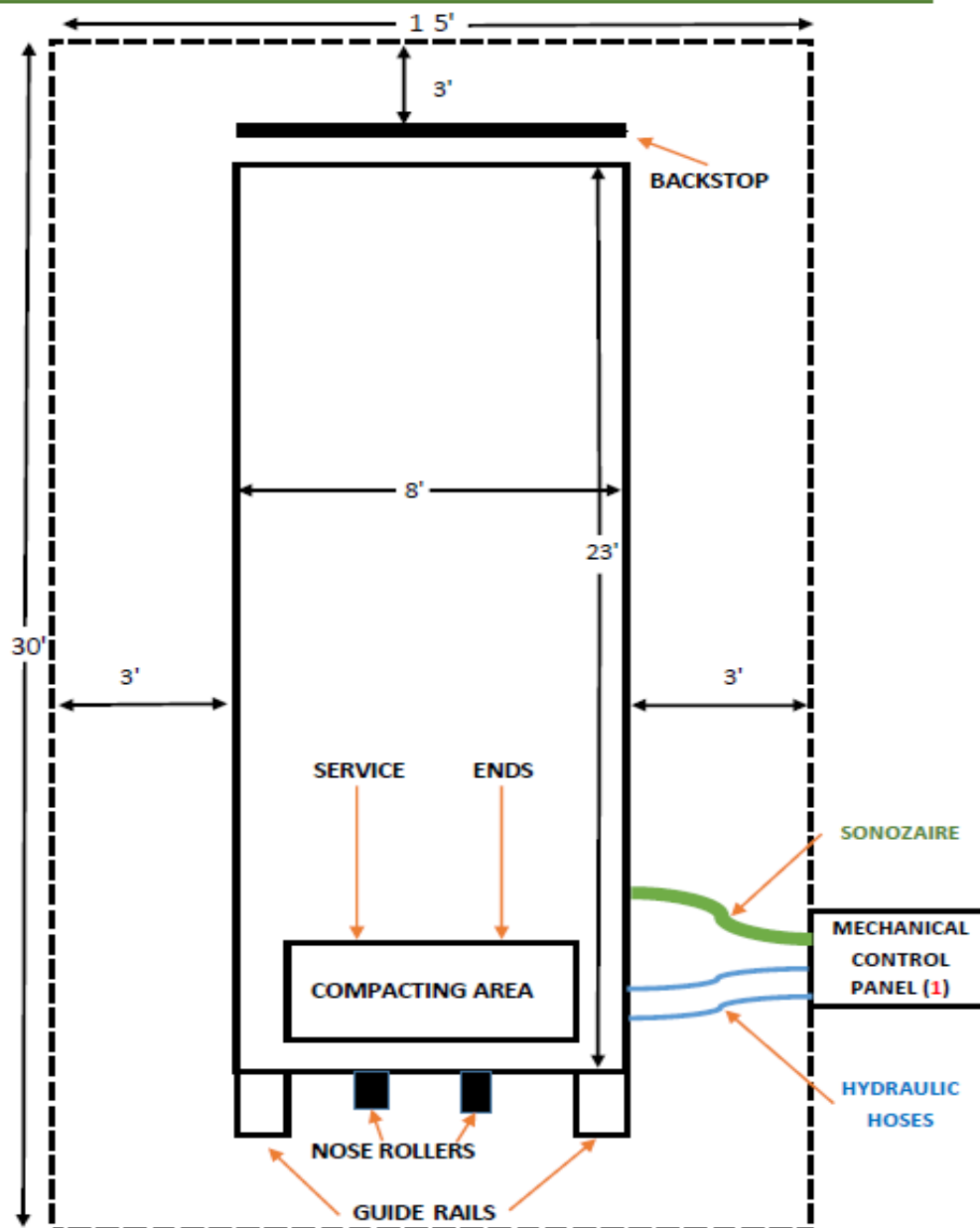








## TYPICAL SET-UP FOR DSNY APPROVED CONTAINER SITE



- (1) AS PER OSHA, COMPACTING AREA MUST BE VIEWABLE FROM CONTROL PANEL, WHICH MAY BE POSITIONED ON EITHER SIDE OF COMPACTOR
- \*CEMENT PAD MINIMUM SPECIFICATIONS 15' X 30' FOR CONTAINER ONLY (DOTTED LINES)
- \*MUST HAVE MINIMUM 3' CLEARANCE ON ALL SIDES OF CONTAINER

*\*Please Note: DSNY **STRONGLY** recommends adhering to the specifications provided. However, DSNY understands that there are circumstances where modifications are necessary and may be possible after consultation as part of the Waste Management Plan submittal process.*

## *DSNY Roll On/Roll Off Vehicle Data Sheet*

G.V.W.R. (Lbs.)	85,000
Tare Weight	34,000 LBS.
Length (Overall)	37'
Height	ACTUAL 11' 0" PLACARD 11' 4"
Width (Overall)	108"(9 FT)
Wheel Base	263
Maximum Speed	55 MPH
Body Capacity	30-CU. YD. CONTAINER
Turn Radius	40FT
Tire Size	425/65R22.5      12.00R24
Front Tire Pressure	Front Axle = 120 PSI
Rear Tire Pressure	Forward/Rear = 120 PSI    Rear/Rear = 120 PSI
Fuel Tank Capacity	50 GALLONS
Fuel Type	ULTRA LOW SULFUR DIESEL
Hyd. Tank Capacity	50 GALLONS
Urea/Diesel Exhaust Fluid	11.8 GALLONS
Number of Axles	3

**FOR GENERAL CONTAINERIZATION SERVICE, PLEASE REFERENCE THE FOLLOWING EQUIPMENT DESIGN SPEC(S):**



**FOR GENERAL CONTAINERIZATION SERVICE, PLEASE REFERENCE THE FOLLOWING EQUIPMENT DESIGN SPEC(S):**

**Vehicle Specifications**

Length: 37'

Width: 9'

Height

Without Container: 11'4"

With Container: 12'6"

Rail Extension Height

Without Container: 18'6"

With Container: 25'

Turn Radius: 40'

Capacity: 30-cu.yd.

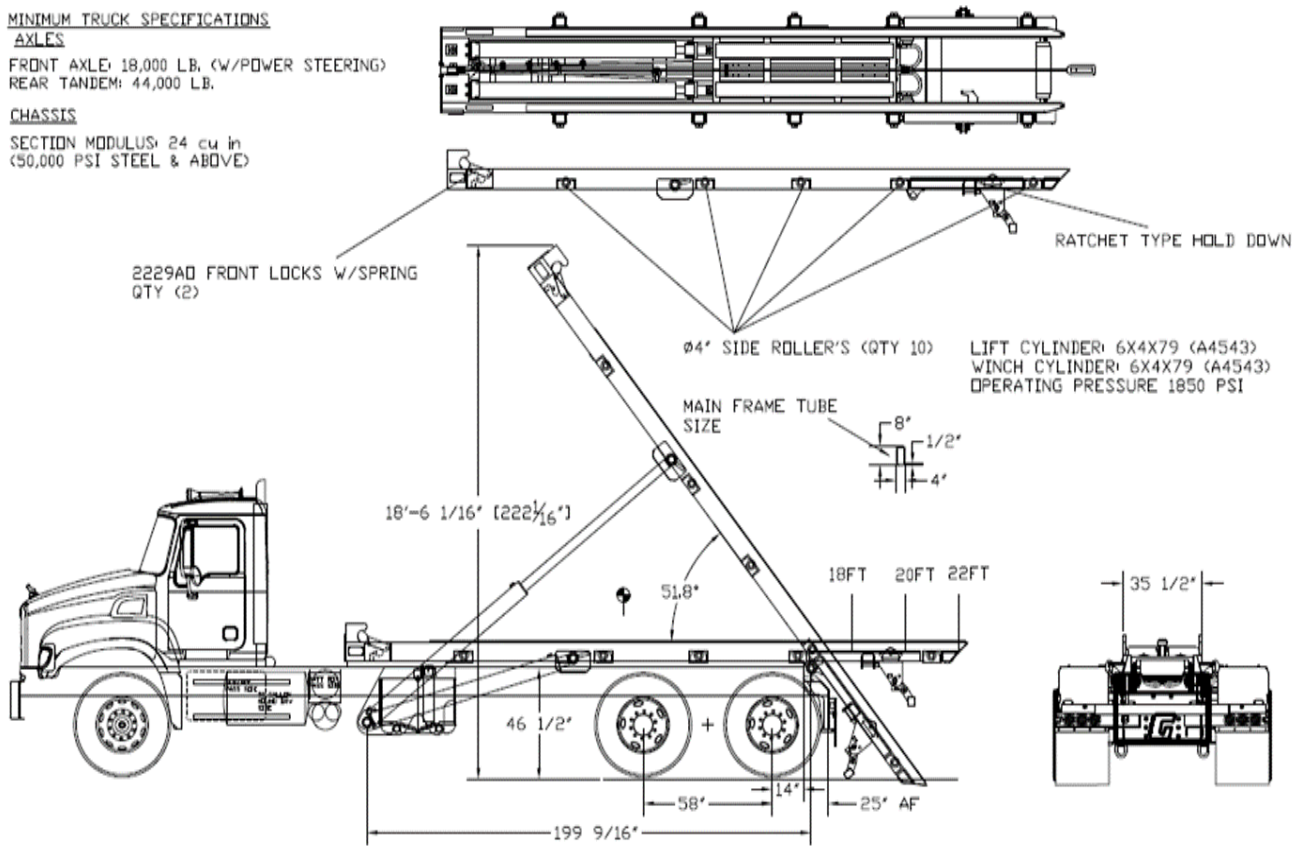
**MINIMUM TRUCK SPECIFICATIONS**

**AXLES**

FRONT AXLE: 18,000 L.B. (W/POWER STEERING)  
REAR TANDEM: 44,000 L.B.

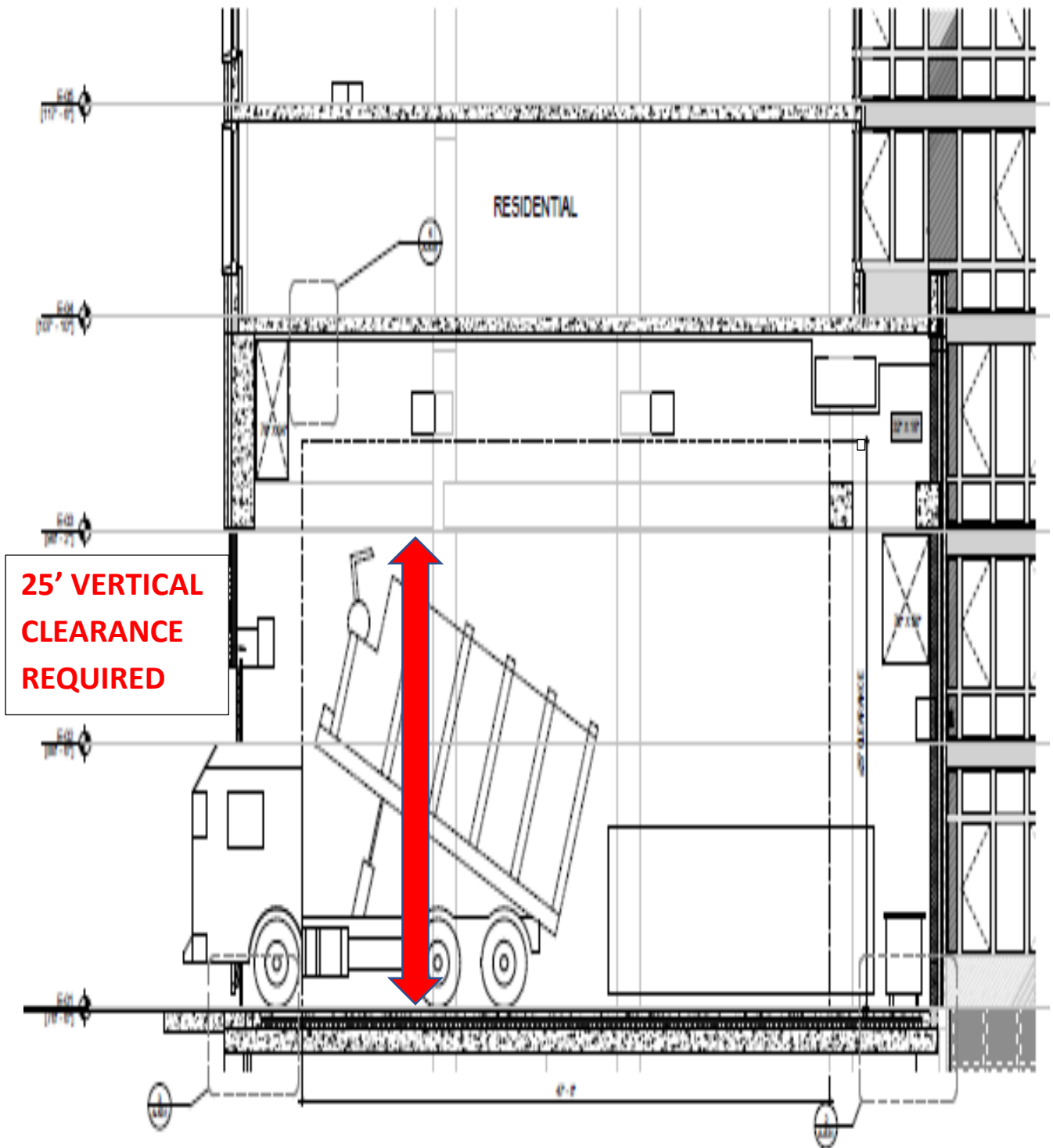
**CHASSIS**

SECTION MODULUS: 24 cu in  
(50,000 PSI STEEL & ABOVE)



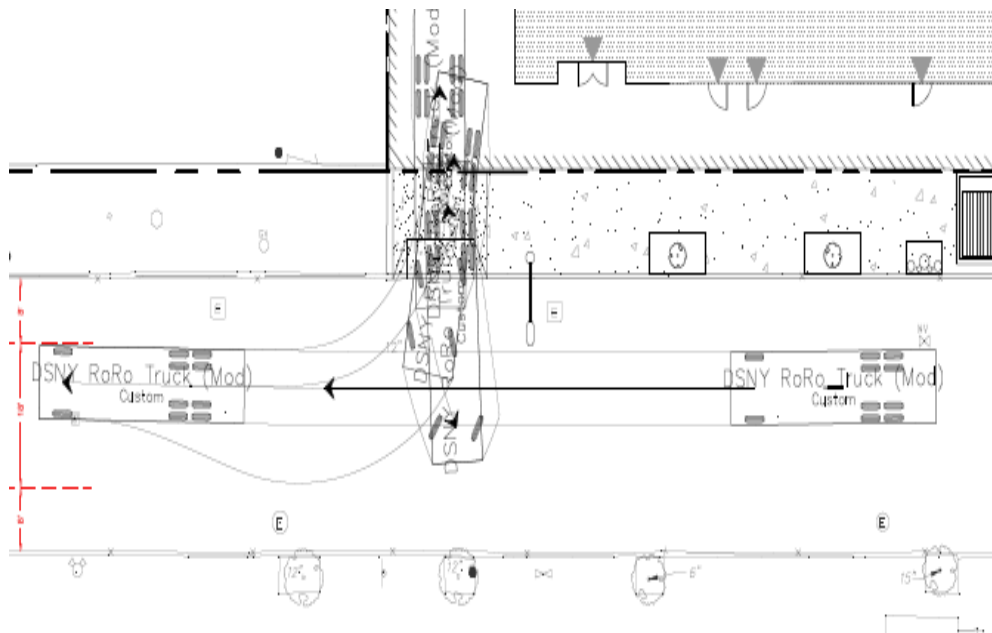


**PLEASE REFERENCE THE FOLLOWING EXAMPLE REGARDING INTERIOR  
COMPACTOR CONTAINMENT AREAS:**

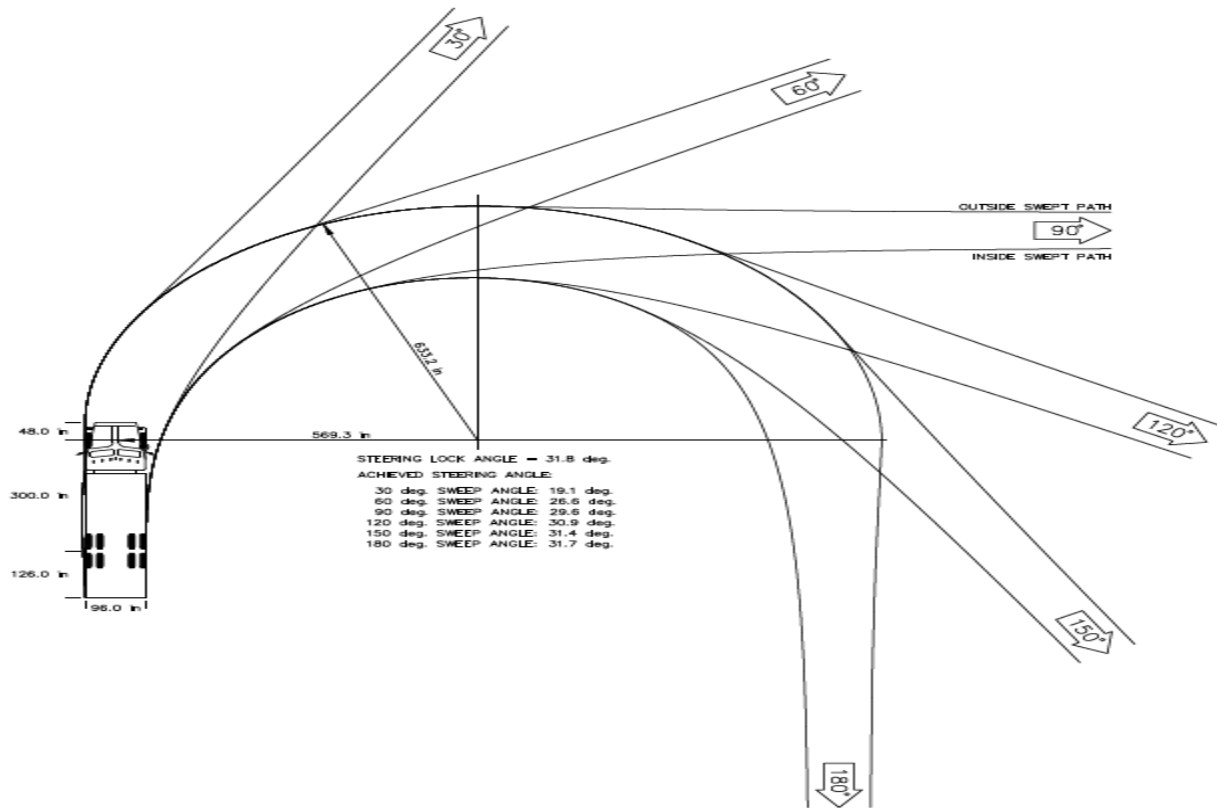


*\*Please Note: DSNY **STRONGLY** recommends adhering to the specifications provided. However, DSNY understands that there are circumstances where modifications are necessary and may be possible after consultation as part of the Waste Management Plan submittal process.*

**PLEASE REFERENCE THE FOLLOWING EXAMPLE(S) REGARDING EQUIPMENT AUTO TURN ANALYSIS:**



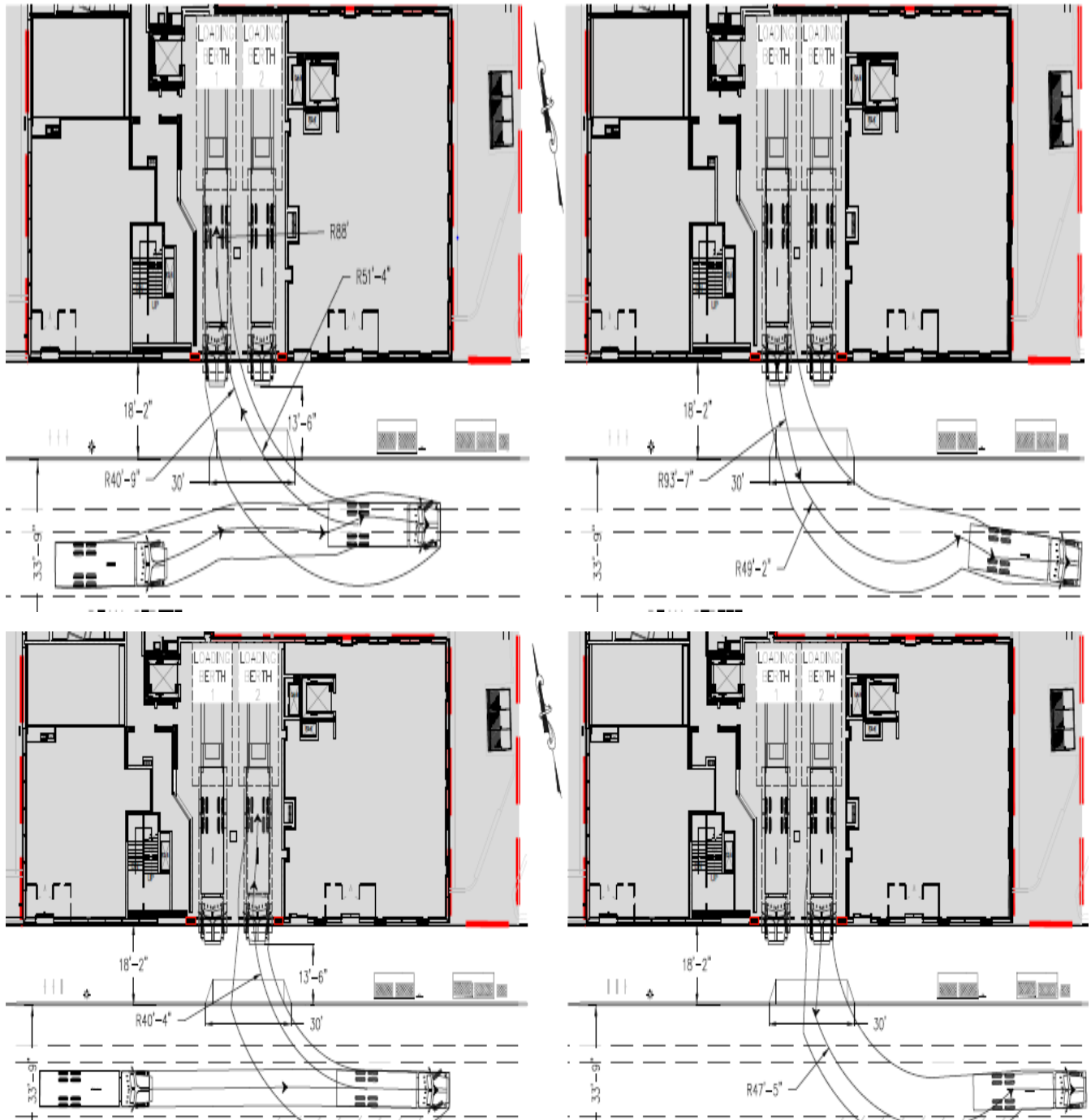
**AUTOTURN  
ANALYSIS MUST BE  
COMPLETED BY ALL  
DEVELOPMENTS  
PRIOR TO  
APPROVAL BY DSNY**



*\*Please Note: DSNY **STRONGLY** recommends adhering to the specifications provided. However, DSNY understands that there are circumstances where modifications are necessary and may be possible after consultation as part of the Waste Management Plan submittal process.*



**PLEASE REFERENCE THE FOLLOWING EXAMPLE(S) REGARDING EQUIPMENT AUTO  
TURN ANALYSIS:**



*\*Please Note: DSNY **STRONGLY** recommends adhering to the specifications provided. However, DSNY understands that there are circumstances where modifications are necessary and may be possible after consultation as part of the Waste Management Plan submittal process.*

CITY OF NEW YORK  
DEPARTMENT OF SANITATION

Certificate of Approval  
for  
Refuse Compactor System

The approval contained herein is made to Section C-26-1417.4 of the Administrative Code of the City of New York and to the “Requirements for Obtaining Approval House Type Compactors” issued hereunder (hereinafter referred to as the “Requirements”). The approval is made subject to continued compliance by the applicant for such approval with the provisions of the requirements and with the conditions listed herein. Violations of any of such provisions or conditions may constitute grounds for suspension or revocation, or amendment of such approval. Special attention is directed to the following two provisions.

1. All proposed modifications to an approved compactor system, including modifications to an approved container which is part of such system, shall be submitted to the Department of Sanitation determination as to whether the proposed modification will constitute a change of model and thereby require new approval. This submission shall precede any installation of the modified compactor.
2. Only containers certified by the Department of Sanitation to be compatible with an approved compactor system may be used with such system.





# sanitation

Jessica S. Tisch Commissioner

---

## REFUSE & RECYCLING COLLECTION OPERATIONS

125 Worth Street  
Room 700  
New York, N.Y. 10013  
CollectionOperations@dsgny.nyc.gov  
646-885-4830

Date: July 1, 2022

To Whom It May Concern,

You must enter into a service agreement with the city, holding the city harmless in the event of an accident associated with our collecting refuse on your property. You must also obtain insurance as specified in the service agreement in which the City of New York & the NYC Department of Sanitation are named the insured, or additional insured.

The Department will not commence service until either a policy of insurance or a certification of insurance is received. While it is necessary that the policy be received by this office, service will be commenced upon receipt of a property issued certificate conforming to the following requirements.

1. The insurance to be furnished shall be either contracted liability policy or other type of policy under which the City of New York is name insured or additional named insured to any existing policy.

**A) Certificate Holder Will Be:**

N.Y.C Department of Sanitation  
125 Worth Street, Room 700  
New York, N.Y. 10013

**B) Indicate in the Description of:**

Operations/Locations/Vehicles/Exclusions added by Endorsement/Special provisions  
"the City of New York & NYC Department of Sanitation are included as Additional insured." Please include your name, address and site number.

The Limited of Liability limits are:

**A. General Aggregate – \$2,000,000 and \$1,000,000 per Occurrence**

**B. Property Damage - \$100,000**

2. Indicate on the certificate, the type of Insurance as General Liability Occurrence Insurance.

3. THE FOILOWING SIX (6) ENDORSEMENTS MUST BE TYPED ON THE INSURANCE POLICY CERTIFICATE EXACTLY AS THEY APPEAR BELOW; OTHERWISE, THE INSURANCE WILL NOT BE ACCEPTABLE.

a. This policy or certificate has been issued to insure the City of New York the limits of liability specified in such policy or certificate as required under paragraph 5 of a certain Collection Agreement between the City of New York and

----- executed on -----

b. **NOTICE OR ACCIDENT** - Notice of accident shall be given to the company within sixty (60) days after notice to the commissioner of Sanitation or such accident.

c. **NOTICE OR CLAIM** - Notice of claims shall be given to the company within sixty (60) days after such claims shall be filed with the Comptroller of the City of New York.

d. **NOTICE OF CANCELLATION OF POLICY** - The Policy shall not be cancelled, terminated, modified or changed by the Company unless ten (10) days prior written notice is sent to the Insured by registered mail and addressed to the Commissioner of Sanitation, 125 Worth Street, New York, NY 10013, nor shall it be cancelled, terminated or modified by the owner securing this policy without the prior consent of the Commissioner of Sanitation.

e. **VIOLATION OF ANY OF THE TERMS** - of any policy issued by the insurance Company to the owner shall not invalidate this policy, as far as the Department of Sanitation is concerned.

f. **NOTICE UNDER THE POLICY** - shall be addressed to the City of New York, Department of Sanitation, Commissioner, 125 Worth Street, New York, NY 10013.

**PLEASE NOTE:**

FOR PURPOSE OF FINISHING AN ACCEPTABLE POLICY OR CERTIFICATE AS SET FORTH IN PARAGRAPH #5a ABOVE, YOUR BROKER OR INSURANCE COMPANY MAY INSERT THE DATE ON WHICH THE COLLECTION AGREEMENT WAS EXECUTED BY YOU.

DIRECT ANY INQUIRIES TO:  
**DSNY COLLECTION / CONTAINERIZATION OFFICE**  
**EMAIL: [CollectionOperations@dsny.nyc.gov](mailto:CollectionOperations@dsny.nyc.gov)**  
**TELEPHONE: (646) 885 – 4830 / 4683**  
**FAX: (212) 788 - 3769**



# sanitation

Jessica S. Tisch Commissioner

---

## REFUSE & RECYCLING COLLECTION OPERATIONS

125 Worth Street  
Room 700  
New York, N.Y. 10013  
CollectionOperations@dscy.nyc.gov  
646-885-4830

### CONTAINERIZATION SERVICE GUIDELINES

Effective immediately, the Department of Sanitation is revising its procedure for testing new Roll/On Roll/Off compacting containers and E/Z Pack containers. An approval of site and containers are necessary for compliance with Department of Sanitation specifications. Locations will be approved on the following basis:

1. Locations desiring Roll On/Roll Off container service must contact Collection Operations at:

**[CollectionOperations@dscy.nyc.gov](mailto:CollectionOperations@dscy.nyc.gov)**

2. The Office of Containerization will conduct a feasibility to ascertain if containerization is suitable for the location in question and advise the location of the type and size of containers that may be used.

3. Once the location has been approved, the site may install a Roll On/Roll Off container system to the following:

- A) Containers must be compatible with Department of Sanitation equipment, conform to Department of Sanitation specifications for container type and meet all requirements of Tripartite General Order Number 2. No modification to the Department of Sanitation equipment will be permitted.
- B) Sufficient space (including headroom) must be available at site for maneuverability of truck when servicing the location.
- C) Container must dump cleanly without joggling of truck. Containers must be maintained in good working order by the owner.
- D) Density of compacted garbage must meet Department of Sanitation standards of 450 to 700 lbs per cubic yard.
- E) Containers shall not be stored on any public sidewalk or street. If portable E/Z Pack containers on wheels are used, they must be stored in the building or on the building property. Building maintenance personnel must transport the containers into position for service on the day of collection by the E/Z Pack truck. Sanitation personnel are not to handle the containers. They must be removed from the street or any public property after service by the Department by building maintenance personnel.

- F) Equipment and installation must meet the latest industry safety standard (ANSI Z245.1) in addition to City, State and OSHA requirements.

Periodically the containers will be subject to inspection to determine that the above conditions are being met. If the above conditions are not met, then the Department of Sanitation reserves the right to suspend containerized service until the violations have been corrected.