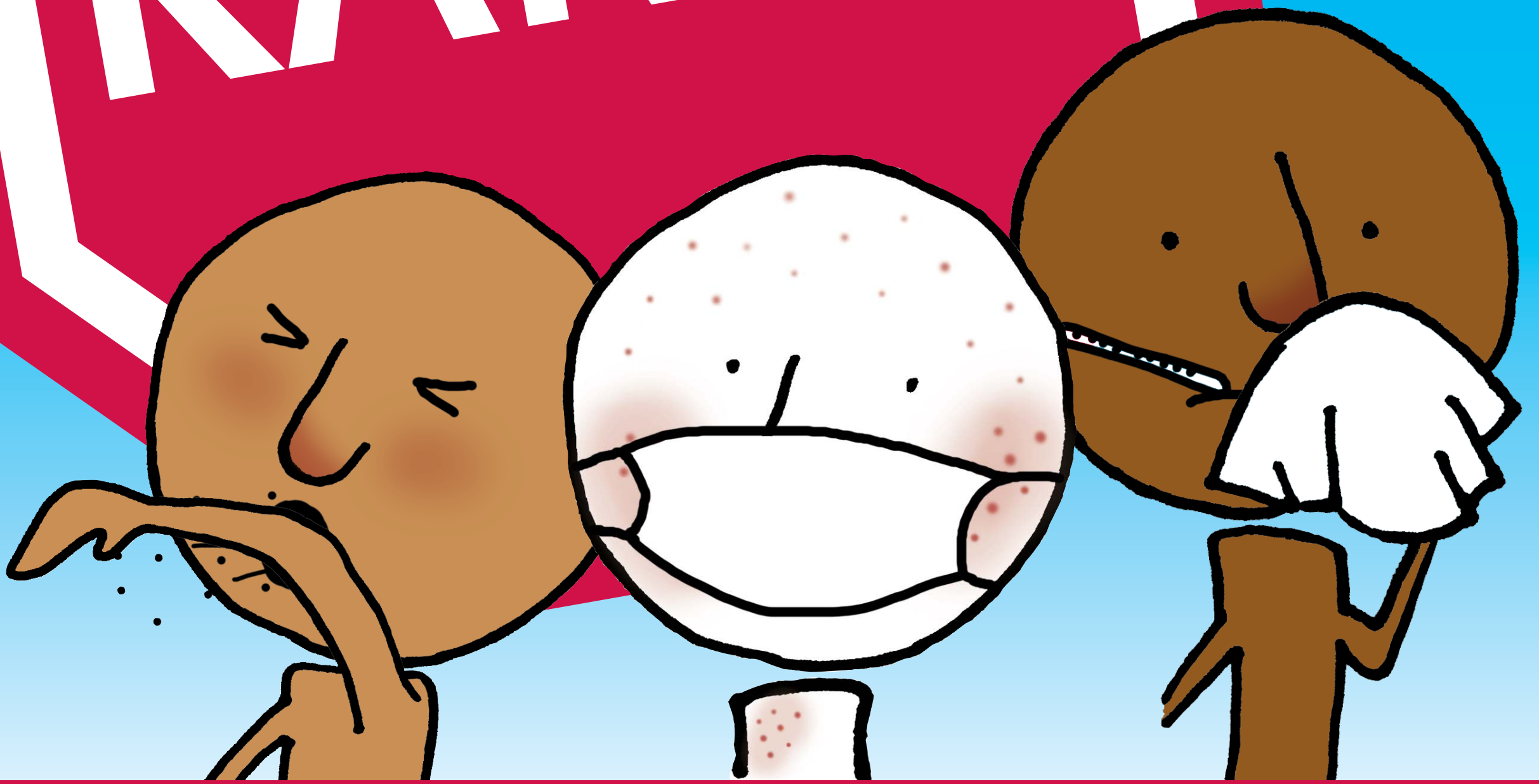


**NOU AKEYI TOUT MOUN,
men nou PA nan mikwòb!**

KANPE!



**Kèk maladi ka grav pou lòt moun. Pou pwoteje
moun ki bò kote ou yo, rete lakay ou si w genyen:**

**Lafyèv, tous, gòj fè mal,
nen k ap koule, gratèl, kè plen,
dyare oswa vomisman**