



NEW YORK CITY DEPARTMENT OF
HEALTH AND MENTAL HYGIENE
Oxiris Barbot, MD
Commissioner

Hepatitis B Vaccine Birth Dose Coverage Annual Report New York City, 2017

Infants who received hepatitis B vaccine within three days of birth at NYC delivery facilities, NYC, 2017

Facility #	Facility Name	Total Births	Births <2,000g	Births ≥2,000g	Infants Vaccinated [‡]	% Vaccinated ^{†‡}	% of Total NYC Infants Not Vaccinated
1	Bellevue Hospital Center	1415	65	1350	1211	89.7%	0.7%
2	Bronx-Lebanon Hospital Center	2010	80	1930	1890	97.9%	0.4%
3	Brookdale University Hospital and Medical Center	973	59	914	956	104.6%	0.1%
4	Brooklyn Birthing Center	139	0	139	21	15.1%	0.4%
5	Brooklyn Hospital Center	2431	102	2329	2086	89.6%	1.1%
6	Coney Island Hospital	1062	31	1031	1045	101.4%	0.1%
7	Elmhurst Hospital Center	2557	79	2478	2496	100.7%	0.2%
8	Flushing Hospital Medical Center	2887	93	2794	2769	99.1%	0.4%
9	Harlem Hospital Center	941	46	895	823	92.0%	0.4%
10	Jacobi Medical Center	1908	114	1794	1624	90.5%	0.9%
11	Jamaica Hospital Medical Center	2234	102	2132	2111	99.0%	0.4%
12	Kings County Hospital Center	1978	98	1880	1880	100.0%	0.3%
13	Lenox Hill Hospital	4146	103	4043	2912	72.0%	4.0%
14	Lincoln Medical and Mental Health Center	2059	69	1990	2037	102.4%	0.1%
15	Long Island Jewish Forest Hills	1960	25	1935	1905	98.4%	0.2%
16	Long Island Jewish Medical Center (Katz Women's Hospital)	8847	313	8534	7057	82.7%	5.8%
17	Maimonides Medical Center	8327	168	8159	3438	42.1%	15.8%
18	Metropolitan Hospital Center	933	20	913	891	97.6%	0.1%
19	Montefiore Medical Center - Weiler Campus	3778	210	3568	3196	89.6%	1.9%
20	Montefiore Medical Center - Wakefield Campus	2089	77	2012	1897	94.3%	0.6%
21	Mount Sinai Hospital	7816	266	7550	2529	33.5%	17.0%
22	Mount Sinai West	5947	161	5786	3301	57.1%	8.5%
23	New York Presbyterian / Brooklyn Methodist Hospital	5302	149	5153	3117	60.5%	7.0%
24	New York Presbyterian / Columbia University Medical Center	4877	357	4520	3679	81.4%	3.9%
25	New York Presbyterian / Lower Manhattan Hospital	3278	49	3229	2447	75.8%	2.7%



NEW YORK CITY DEPARTMENT OF
HEALTH AND MENTAL HYGIENE
Oxiris Barbot, MD
Commissioner

Hepatitis B Vaccine Birth Dose Coverage Annual Report New York City, 2017

Infants who received hepatitis B vaccine within three days of birth at NYC delivery facilities, NYC, 2017 (cont.)

Facility #	Facility Name	Total Births	Births <2,000g	Births ≥2,000g	Infants Vaccinated [‡]	% Vaccinated ^{†‡}	% of Total NYC Infants Not Vaccinated
26	New York Presbyterian / The Allen Hospital	2088	9	2079	1967	94.6%	0.4%
27	New York Presbyterian / Queens	3974	68	3906	3670	94.0%	1.0%
28	New York Presbyterian / Weill Cornell Medical Center	5252	165	5087	4134	81.3%	3.6%
29	North Central Bronx Hospital	1224	18	1206	971	80.5%	0.8%
30	NYU Langone Medical Center - Brooklyn	4022	63	3959	3003	75.9%	3.3%
31	NYU Langone Medical Center - Tisch Hospital	6013	147	5866	3691	62.9%	7.5%
32	Queens Hospital Center	1500	58	1442	1419	98.4%	0.3%
33	Richmond University Medical Center	2945	93	2852	1663	58.3%	4.1%
34	St. Barnabas Hospital	923	22	901	871	96.7%	0.2%
35	St. John's Episcopal Hospital	664	16	648	603	93.1%	0.2%
36	Staten Island University Hospital	2784	45	2739	1504	54.9%	4.1%
37	SUNY Downstate Medical Center	1208	79	1129	1025	90.8%	0.6%
38	Woodhull Medical and Mental Health Center	1440	42	1398	1214	86.8%	0.7%
39	Wyckoff Heights Medical Center	1381	61	1320	1242	94.1%	0.4%
	Overall Coverage	115312	3722	111590	84295	75.5%	n/a

† This measure is for infants born in 2017 in a NYC delivery facility. The numerator includes infants who received hepatitis B vaccine regardless of birth weight; and the denominator includes infants with birth weight ≥2,000 grams. (Source: NYC DOHMH Office of Vital Statistics)

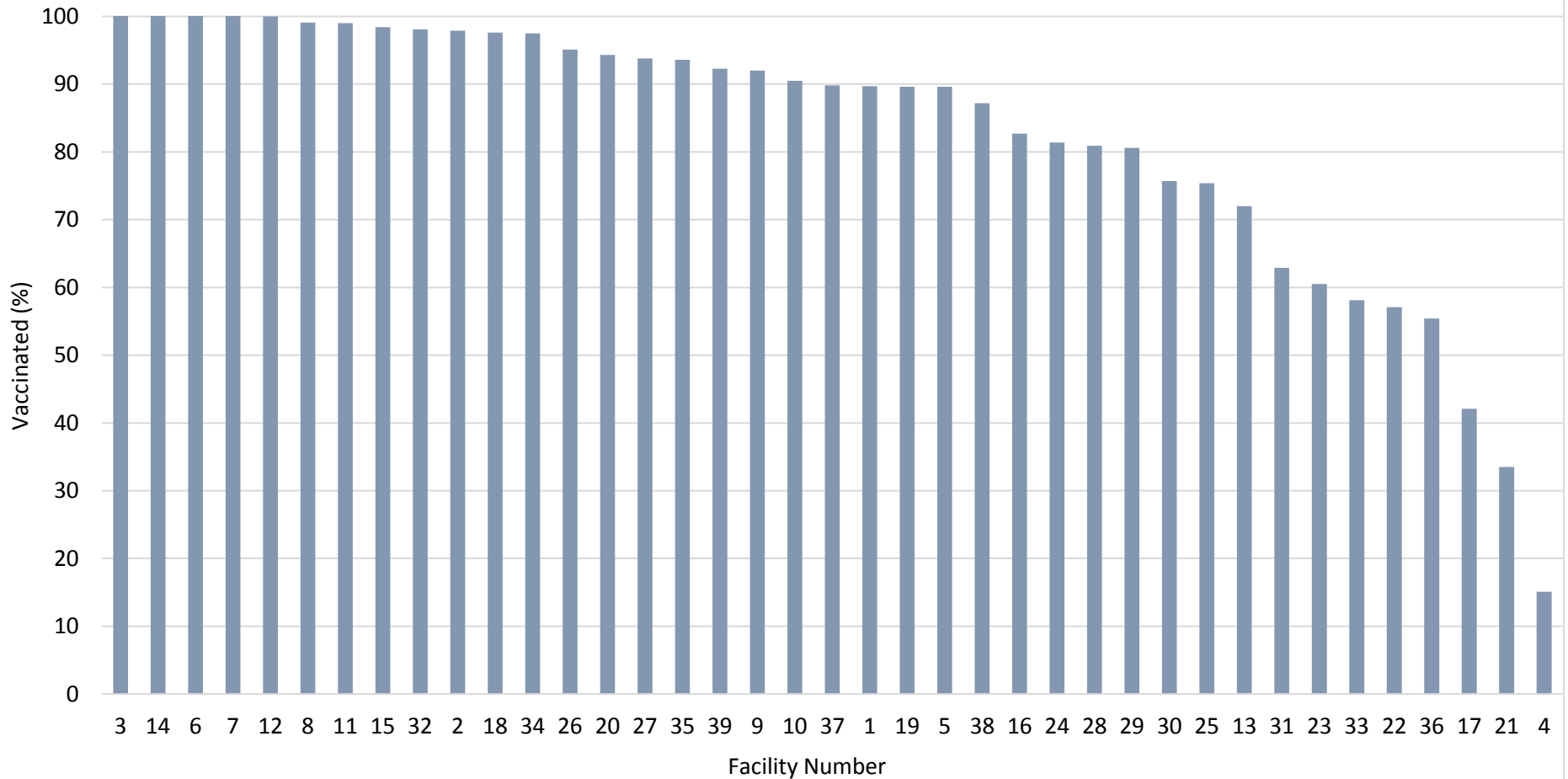
‡ Includes hepatitis B vaccine administered on day 0 (birth), day 1, day 2 or day 3 of life. (Source: NYC Citywide Immunization Registry)



NEW YORK CITY DEPARTMENT OF
HEALTH AND MENTAL HYGIENE
Oxiris Barbot, MD
Commissioner

Hepatitis B Vaccine Birth Dose Coverage Annual Report New York City, 2017

Percent of infants[†] who received hepatitis B vaccine within 3 days[‡] of birth by delivery facility, NYC, 2017*



[†] This measure is for infants born in 2017 in a NYC delivery facility. The numerator includes infants who received hepatitis B vaccine regardless of birth weight; denominator includes infants with birth weight $\geq 2,000$ grams. (Source: NYC DOHMH Office of Vital Statistics)

[‡] Includes hepatitis B vaccination given on days 0 (birth), day 1, day 2 and day 3 to infants regardless of birth weight.

*Facility birth dose coverage: 82.8% (average), 90.5% (median)