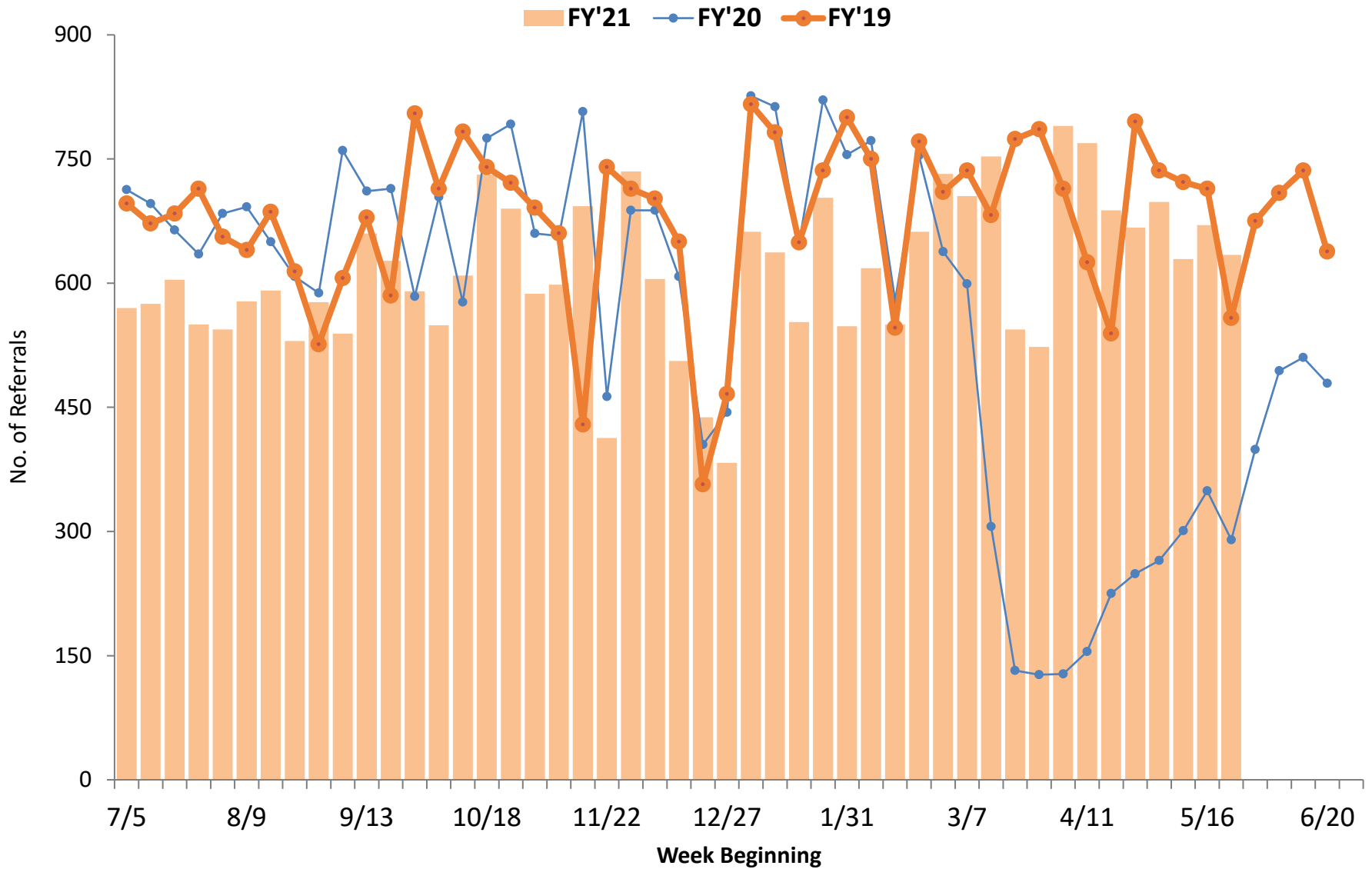


Early Intervention Data Report

June 30, 2021

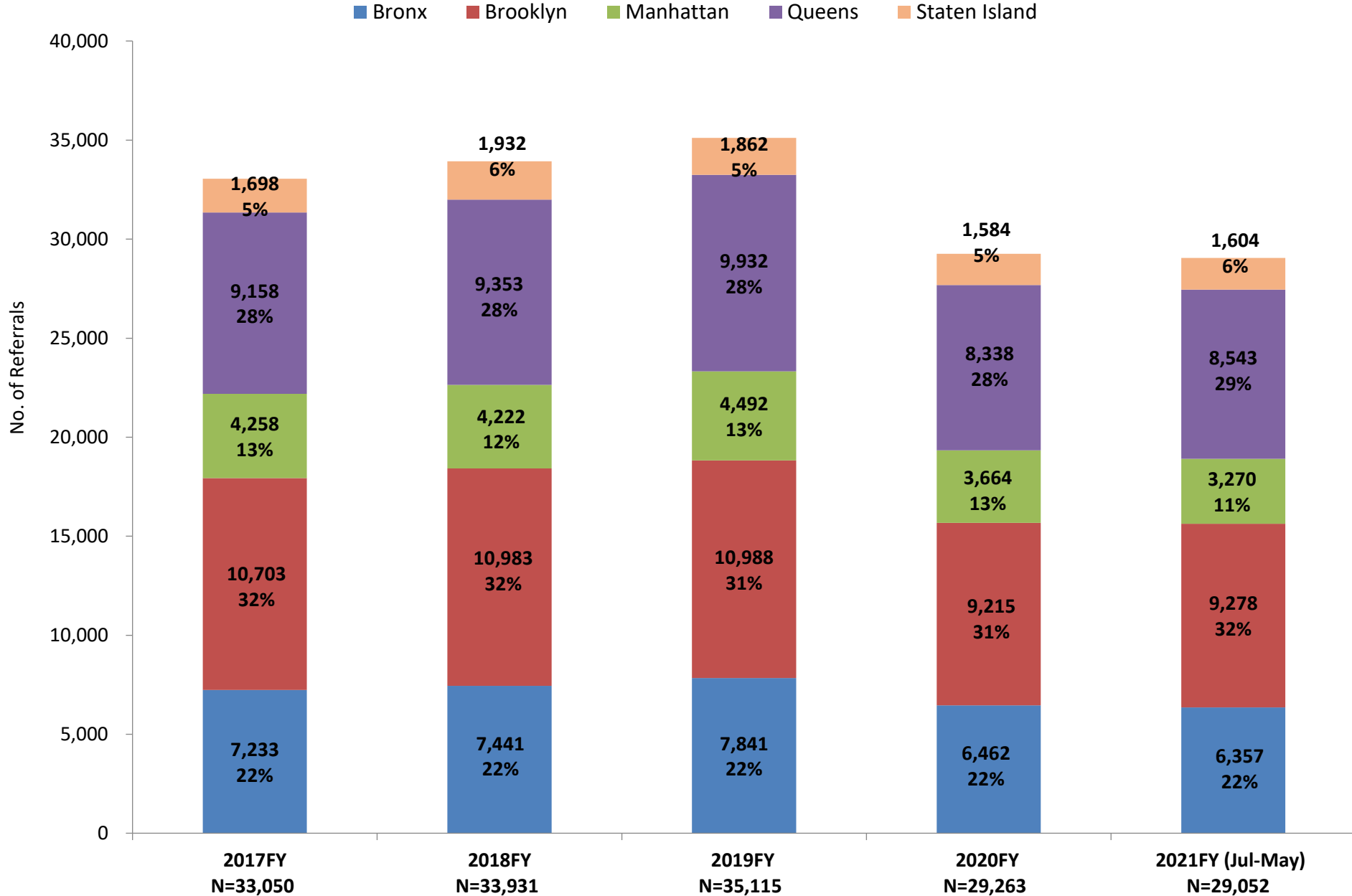


Weekly Number of Referrals, Citywide, FY19-21

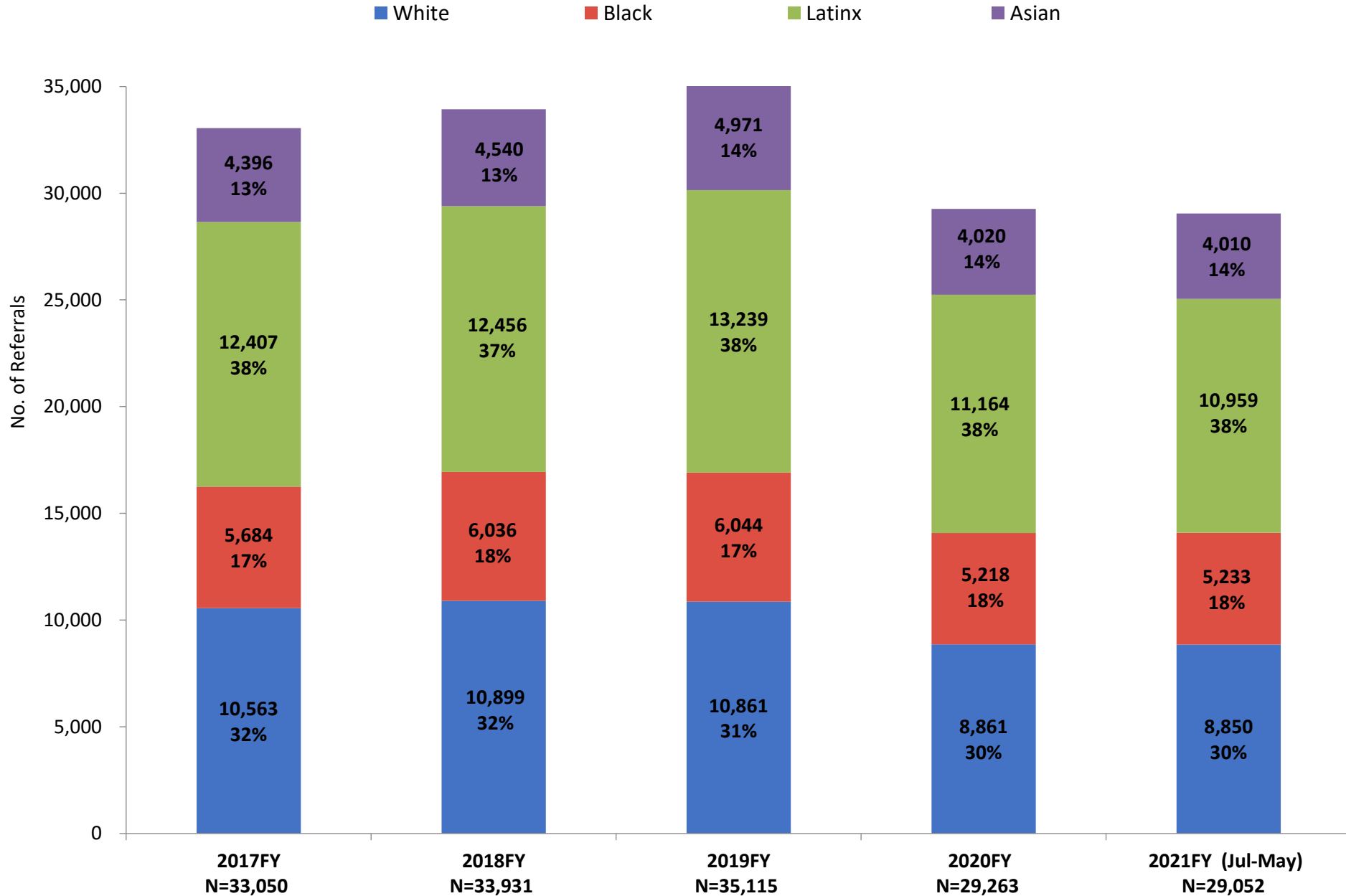


Number of New and Re-Referrals Per Fiscal Year, by Borough

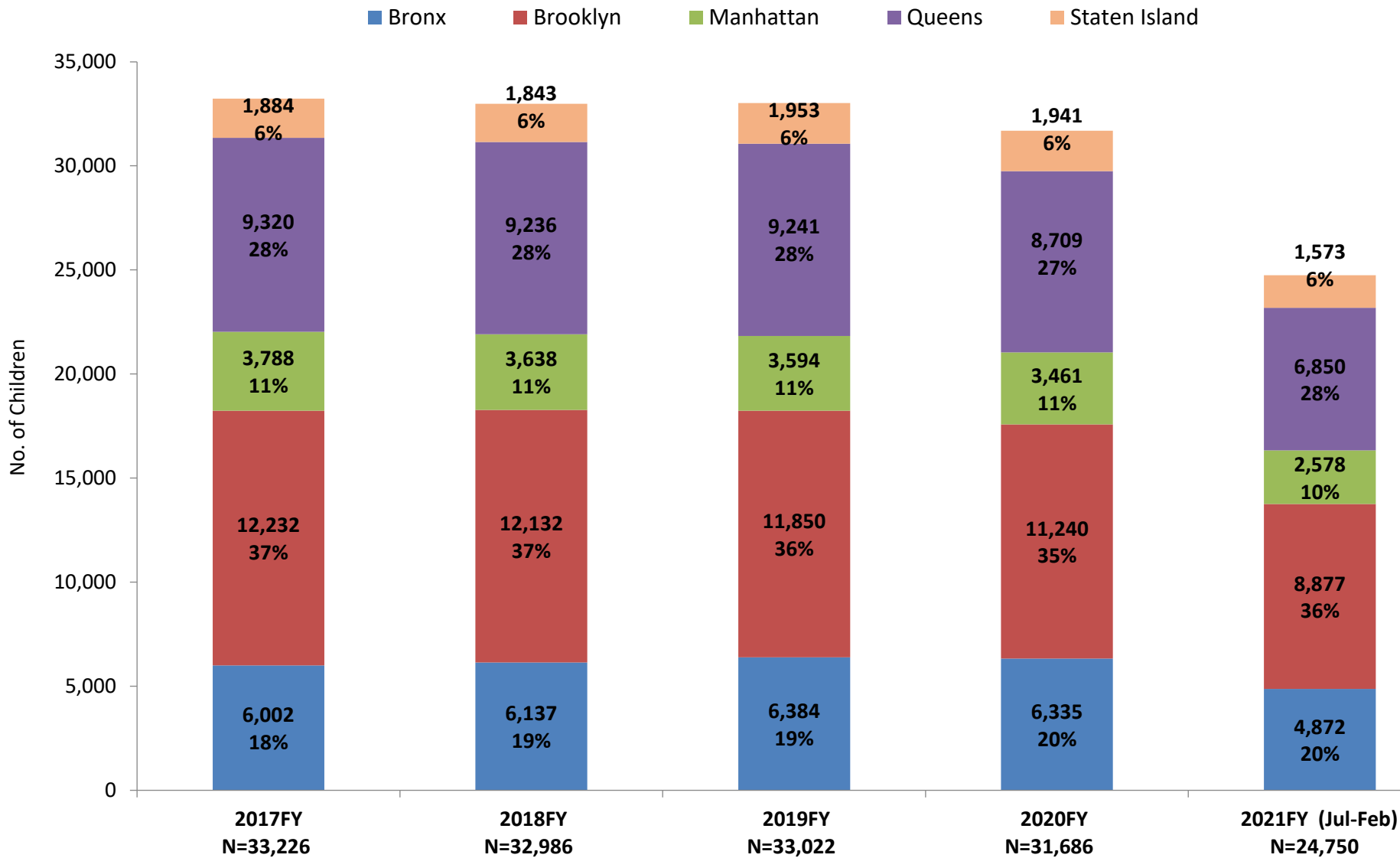
July 2016-May 2021



Number of New and Re-Referrals Per Fiscal Year, by Race and Ethnicity July 2016-May 2021



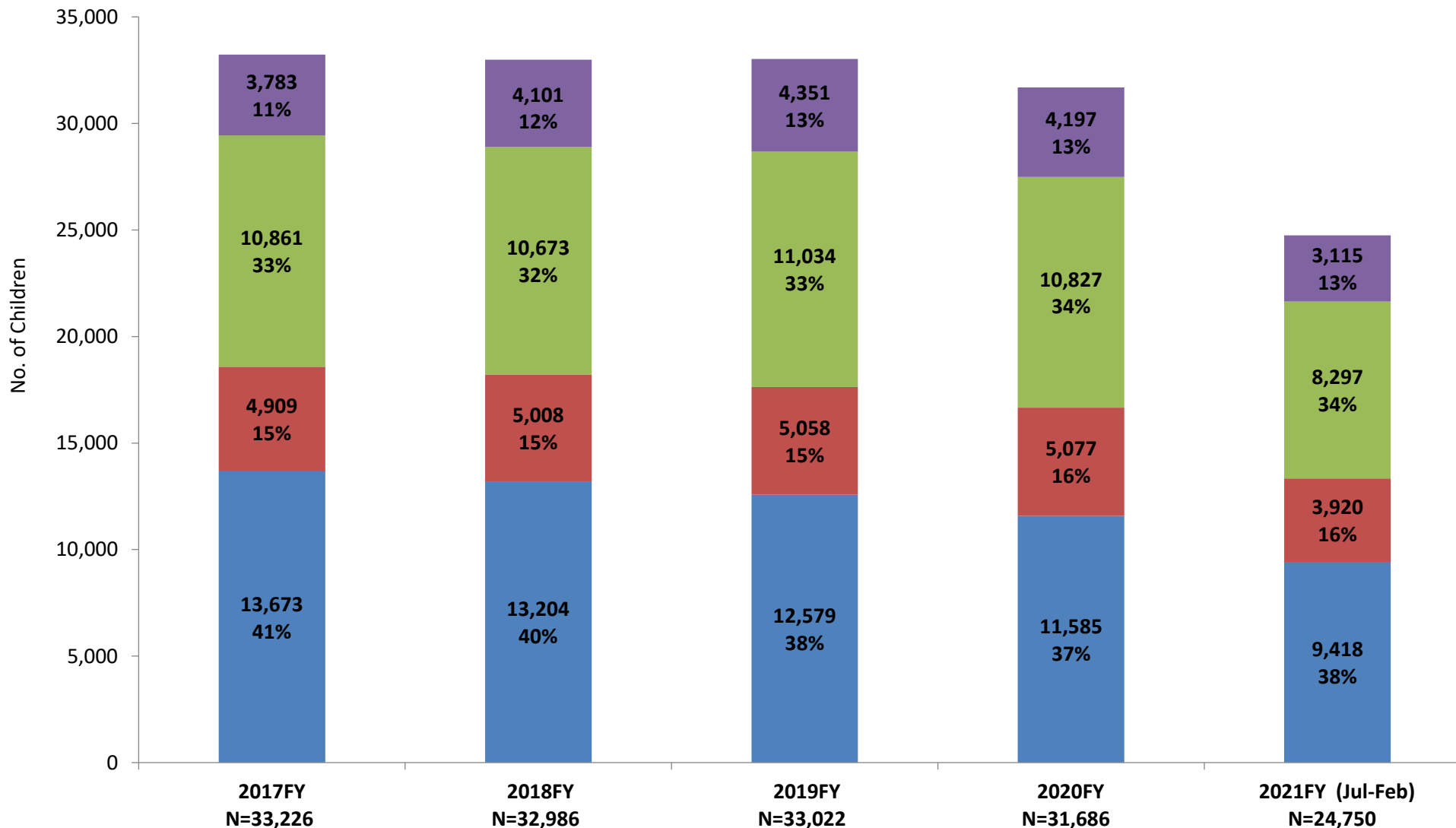
Number of Children Receiving General Services Per Fiscal Year, by Borough July 2016-February 2021



* General services include all those except for service coordination, evaluation, respite care, assistive technology and transportation.

Number of Children Receiving General Services Per Fiscal Year, by Race and Ethnicity July 2016-February 2021

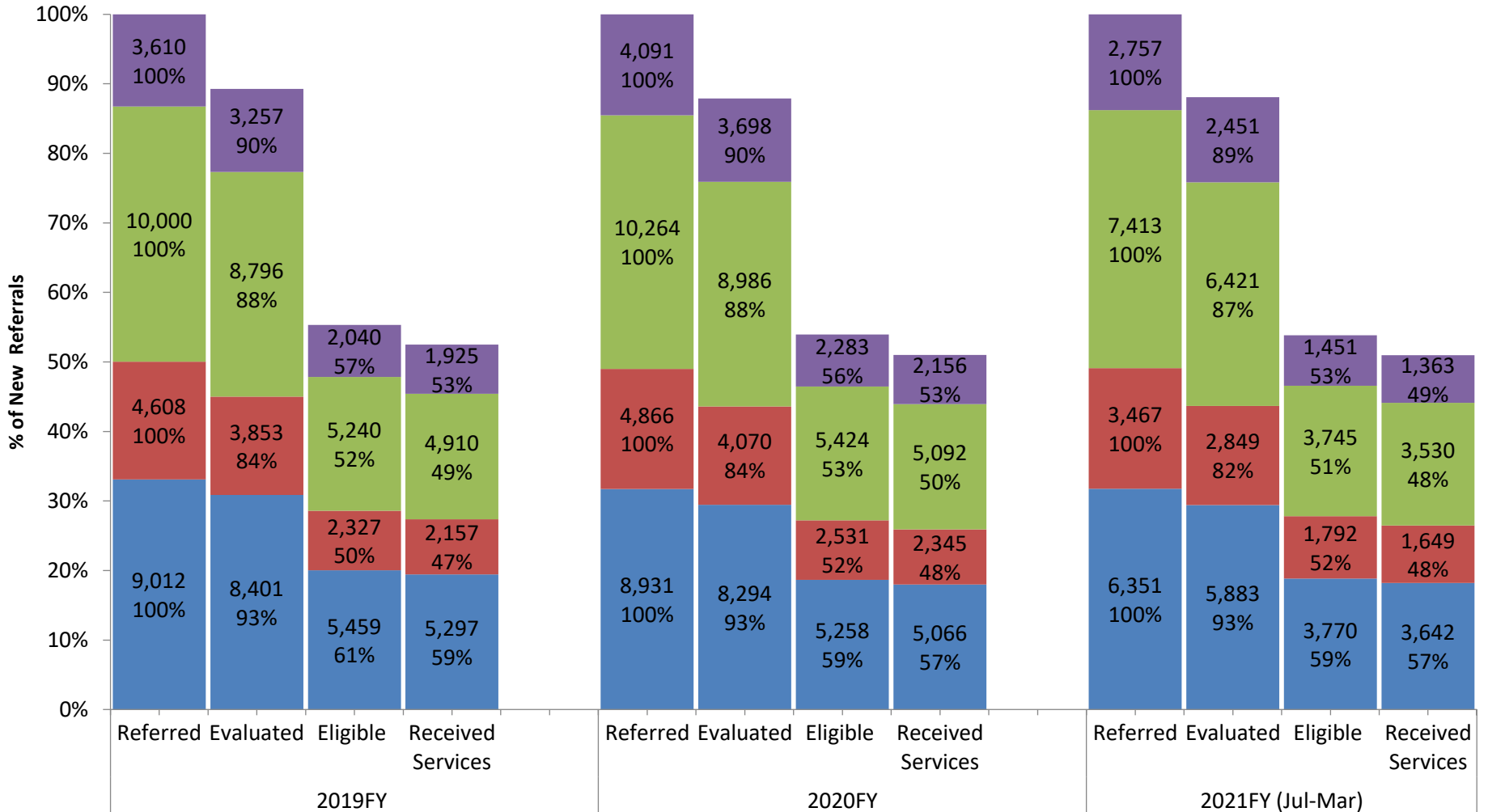
■ White
 ■ Black
 ■ Latinx
 ■ Asian



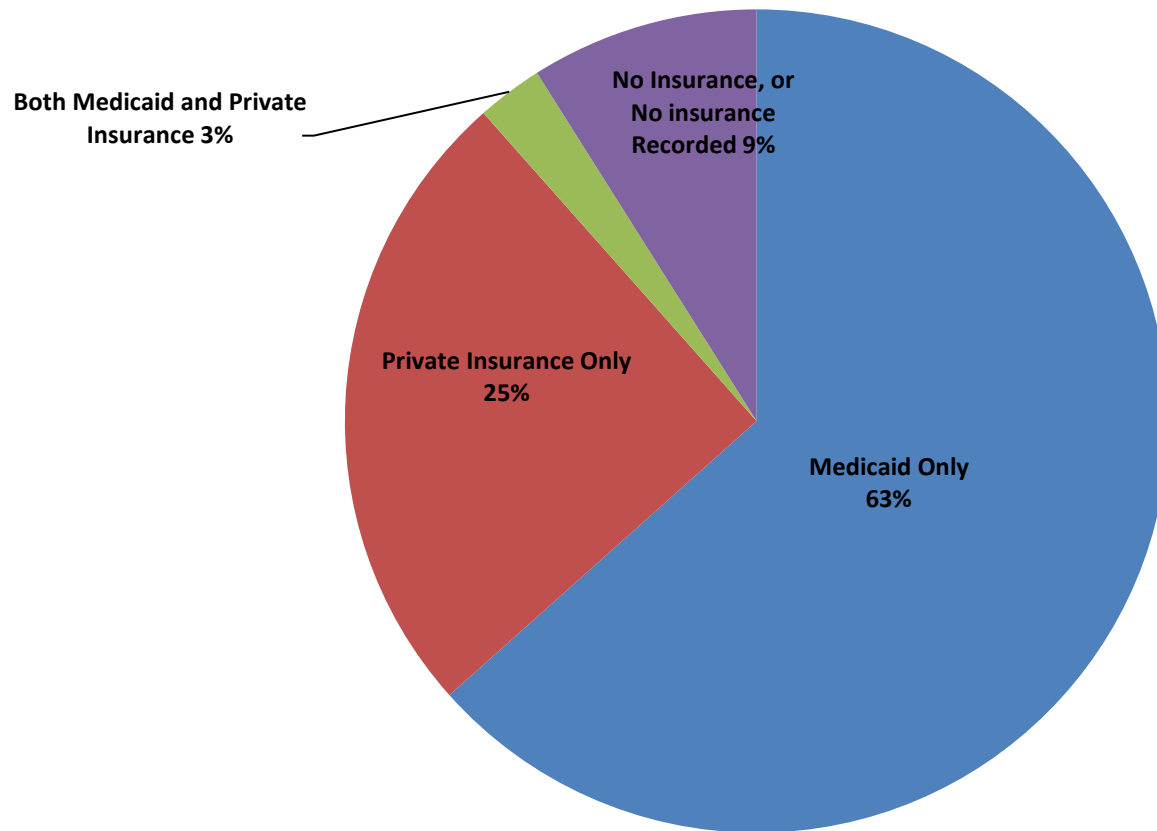
* General services include all those except for service coordination, evaluation, respite care, assistive technology and transportation.

Outcomes for Children Aging Out of EIP by Race and Ethnicity, Citywide, July 2018-March 2021

Population Estimates by Race/Ethnicity by Year				
	2018		2019	
	0-3 Pop	% of Pop	0-3 Pop	% of Pop
White	98,160	30.5%	100,676	31.3%
Black	67,793	21.1%	66,461	20.7%
Latinx	118,260	36.7%	111,849	34.8%
Asian	44,479	13.8%	42,822	13.3%



**Insurance Status of Children Receiving General Services
July 2020 - February 2021
N = 24,750**



Note: Medicaid Managed Care plans and Child Health Plus are categorized as Medicaid. This chart shows the most recent or current insurance policy unless a child has both Medicaid and Private. In that case, both is given preference.