

### What's in this report?

HIV and AIDS in New York City: An Overview..... 1

Reported AIDS Cases, PLWHA and Deaths, New York City 1981 – 2003... 1

Reported HIV/AIDS Diagnoses and Deaths, January – June 2004, and PLWHA as of June 30, 2004..... 2

Which HIV-Related Events are Reportable?..... 2

Reported HIV/AIDS Diagnoses and Deaths, by Sex January – June 2004, and PLWHA as of June 30, 2004..... 3

HIV/AIDS in UHF Neighborhoods in 2003..... 4

**Publication schedule:** This report reflects events occurring through June 30, 2004, and reported by March 31, 2005. It reflects diagnoses made through nine months prior to the publication date because case reporting is 85% complete by that time. Cases continue to be reported for many months later, hence the continuously changing numbers.

To receive this report via e-mail, send an e-mail request to:  
[hivreport@health.nyc.gov](mailto:hivreport@health.nyc.gov)

For electronic versions of this and other HIV-related reports, visit:  
<http://www.nyc.gov/html/doh/html/dires/hivepi.shtml>

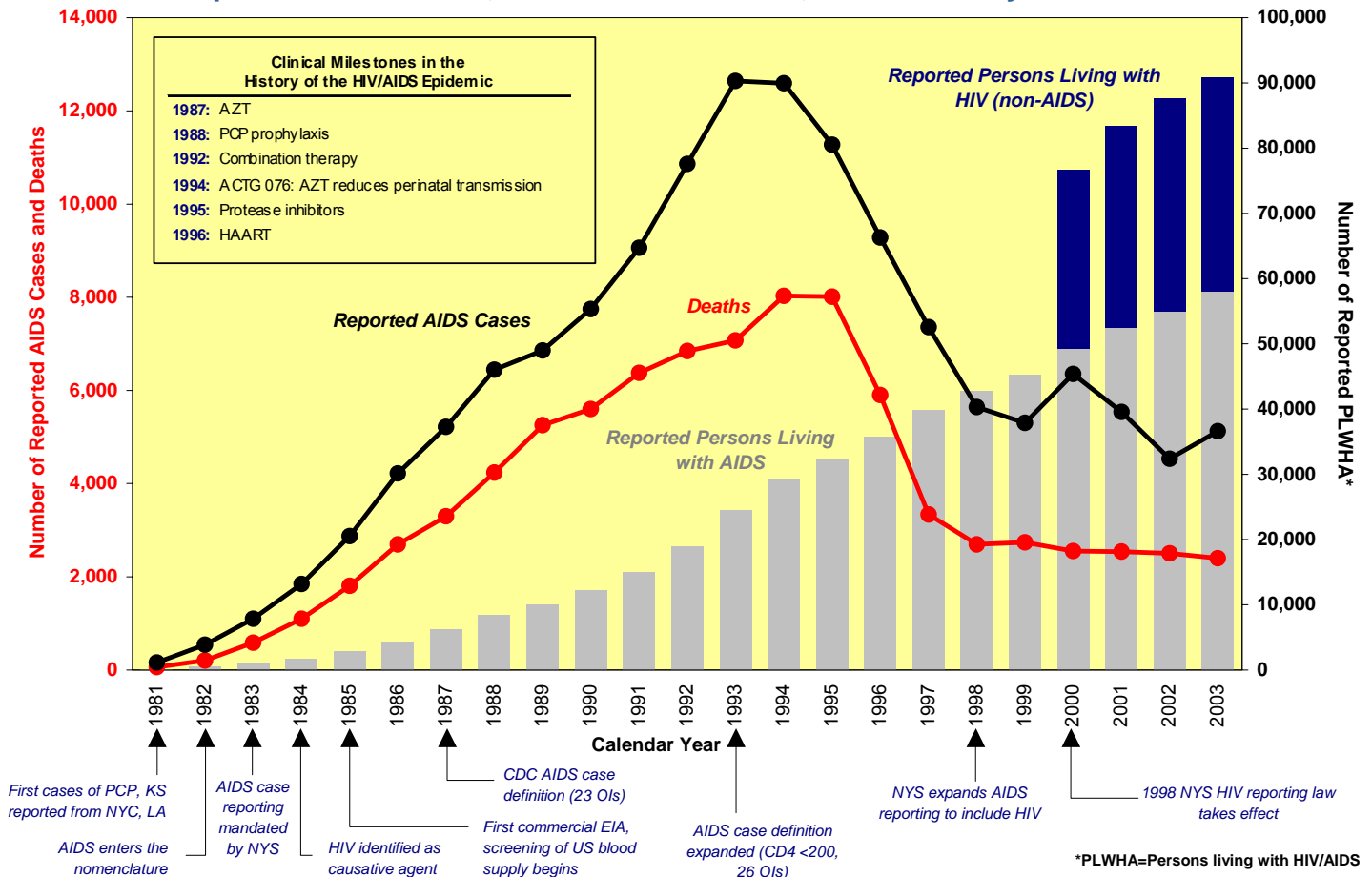
### HIV Epidemiology Program

346 Broadway, Room 706, CN44, New York, NY 10013  
Tel: (212) 442-3388 Fax: (212) 788-2520

### HIV and AIDS in New York City: An Overview

- As of June 30, 2004, **92,021** New Yorkers had been diagnosed and were known to be living with HIV/AIDS. **32,688** persons were known to be living with HIV (non-AIDS), and **59,333** were known to be living with AIDS.
  - The true number of persons living with HIV/AIDS (PLWHA) in NYC is higher. It is estimated that **25%** of persons living with HIV have never been tested and thus do not know they are infected.
- In 2003, the most recent year for which data are complete:
  - **4,205** New Yorkers were diagnosed with HIV. **1,050 (25%)** of them first learned they were HIV-positive at the time they had already progressed to AIDS.
  - **5,056** AIDS cases were diagnosed. New AIDS diagnoses increased by **13%** from the previous year, with the largest increases in Hispanic women (**26%**) and white men (**29%**).
- **81%** of new HIV (non-AIDS) diagnoses and **80%** of new AIDS diagnoses were in blacks and Hispanics in 2003.
  - Black women accounted for **61%** of AIDS cases in women.
  - Among black men the prevalence of HIV/AIDS was **2.8%**, significantly higher than the citywide average of **1.1%**.
- Men and women showed different patterns of HIV transmission in 2003.
  - Heterosexual sex was the predominant risk for HIV among women with known risk, accounting for **75%** of new HIV (non-AIDS) diagnoses.
  - Among men with known risk, sex with men accounted for **71%** of new HIV (non-AIDS) diagnoses.
- HIV/AIDS is concentrated in the poorest neighborhoods of NYC: South Bronx, Central Brooklyn, and Harlem. It also is epidemic in lower Manhattan, particularly in Chelsea/Clinton and Greenwich Village.
- In 2003, the age-adjusted HIV-related mortality rate in adults with AIDS declined by **12%** from the previous year to **246** deaths per **10,000**.

### Reported AIDS Cases, PLWHA\* and Deaths, New York City 1981 – 2003



**Reported HIV/AIDS diagnoses and deaths occurring January 1, 2004 through June 30, 2004, and reported persons living with HIV/AIDS as of June 30, 2004<sup>1</sup>, in New York City**

	HIV diagnoses 1/1/2004–6/30/2004 <sup>1</sup>						AIDS diagnoses 1/1/2004–6/30/2004 <sup>3</sup>		PLWHA as of 6/30/2004		Deaths 1/1/2004–6/30/2004	
	Total		Without AIDS		Concurrent with AIDS diagnosis <sup>2</sup>		N	%	N	%	N	%
	N	%	N	%	N	%						
<b>Total</b>	<b>1,859</b>	<b>100.0</b>	<b>1,311</b>	<b>70.5</b>	<b>548</b>	<b>29.5</b>	<b>2,349</b>	<b>100.0</b>	<b>92,021</b>	<b>100.0</b>	<b>1,051</b>	<b>100.0</b>
<b>Sex</b>												
Male	1,266	68.1	884	67.4	382	69.7	1,613	68.7	63,833	69.4	696	66.2
Female	593	31.9	427	32.6	166	30.3	736	31.3	27,999	30.4	355	33.8
Unknown	0	0.0	0	0.0	0	0.0	0	0.0	189	0.2	0	0.0
<b>Race/Ethnicity</b>												
Black	987	53.1	673	51.3	314	57.3	1,181	50.3	40,787	44.3	555	52.8
Hispanic	530	28.5	375	28.6	155	28.3	742	31.6	29,280	31.8	343	32.6
White	288	15.5	224	17.1	64	11.7	369	15.7	19,711	21.4	144	13.7
Asian/Pacific Islander	37	2.0	25	1.9	12	2.2	39	1.7	1,001	1.1	*	*
Native American	*	*	*	*	0	0.0	*	*	67	0.1	*	*
Other/unknown	14	0.8	11	0.8	*	*	17	0.7	1,175	1.3	*	*
<b>Age group (years)<sup>4</sup></b>												
0-12	10	0.5	8	0.6	*	*	*	*	1,219	1.3	*	*
13-19	56	3.0	52	4.0	*	*	20	0.9	1,355	1.5	*	*
20-29	359	19.3	294	22.4	65	11.9	231	9.8	5,222	5.7	18	1.7
30-39	606	32.6	449	34.2	157	28.6	725	30.9	21,926	23.8	177	16.8
40-49	531	28.6	335	25.6	196	35.8	872	37.1	36,496	39.7	421	40.1
50-59	215	11.6	134	10.2	81	14.8	387	16.5	19,648	21.4	317	30.2
60+	82	4.4	39	3.0	43	7.8	109	4.6	6,155	6.7	112	10.7
<b>Borough of residence</b>												
Manhattan	480	25.8	368	28.1	112	20.4	605	25.8	28,579	31.1	285	27.1
Brooklyn	486	26.1	325	24.8	161	29.4	564	24.0	22,592	24.6	320	30.4
Bronx	477	25.7	335	25.6	142	25.9	541	23.0	20,094	21.8	292	27.8
Queens	287	15.4	181	13.8	106	19.3	311	13.2	12,356	13.4	94	8.9
Staten Island	37	2.0	26	2.0	11	2.0	40	1.7	1,657	1.8	21	2.0
Unknown/outside NYC	92	4.9	76	5.8	16	2.9	288	12.3	6,743	7.3	39	3.7
<b>Transmission risk</b>												
Men who have sex with men	613	33.0	479	36.5	134	24.5	589	25.1	25,066	27.2	122	11.6
Injection drug use history	178	9.6	130	9.9	48	8.8	407	17.3	21,881	23.8	440	41.9
Heterosexual <sup>5</sup>	428	23.0	271	20.7	157	28.6	479	20.4	16,778	18.2	181	17.2
Perinatal	10	0.5	8	0.6	*	*	8	0.3	2,439	2.7	7	0.7
Other	12	0.6	8	0.6	*	*	16	0.7	540	0.6	7	0.7
Unknown/under investigation <sup>6</sup>	618	33.2	415	31.7	203	37.0	850	36.2	25,317	27.5	294	28.0
<b>Clinical status as of 6/30/2004</b>												
HIV (non-AIDS)	n/a	n/a	n/a	n/a	n/a	n/a	n/a	n/a	32,688	35.5	116	11.0
AIDS	n/a	n/a	n/a	n/a	n/a	n/a	n/a	n/a	59,333	64.5	935	89.0

PLWHA=Persons living with HIV/AIDS. Cells representing 1-5 person(s) are marked with an asterisk (\*).

<sup>1</sup> For events reported by March 31, 2005.

<sup>2</sup> HIV diagnosed concurrently with AIDS (within 31 days of HIV diagnosis).

<sup>3</sup> AIDS was diagnosed in 2004 and includes concurrent HIV/AIDS diagnosis.

<sup>4</sup> For HIV and AIDS diagnoses, age at diagnosis; for PLWHA, age as of June 30, 2004; and for deaths, age at death.

<sup>5</sup> Includes persons with CDC-defined heterosexual risk in addition to persons with probable heterosexual transmission defined as a history of: a) sex with an HIV+ person of the opposite sex, an injection drug user, a bisexual male, or a person with hemophilia/coagulation disorder, b) heterosexual prostitution, c) sex with a prostitute of the opposite sex, d) multiple sex partners of the opposite sex, e) sexually transmitted disease, f) crack/cocaine use, or g) immigration from a country where heterosexual transmission of HIV predominates.

<sup>6</sup> Includes individuals with no risk information reported by the provider and for whom an expanded investigation has not been completed.

## Which HIV-related events are reportable in New York State, and who is required to report?

In 1998, New York State expanded AIDS case reporting to include HIV (Chapter 163 of the Laws of 1998, PHL Article 21). The law took effect on **June 1, 2000**. All diagnostic and clinical providers (doctors, nurses, physician assistants, and all others diagnosing HIV or providing care to HIV+ persons) and laboratories are required by law to report the following events:

### Events reportable by providers on the required New York State Provider Report Form (PRF)

- Diagnoses of HIV infection
- Diagnoses of HIV illness in a previously unreported individual (i.e., HIV illness not meeting the AIDS case definition, report of <500 CD4 cells/μL, or detectable viral load)
- Diagnoses of AIDS-defining conditions

### Events reportable by laboratories

- All positive Western blot test results
- All detectable viral load test results
- All CD4 test results <500 cells/μL

*For assistance in reporting a case of HIV/AIDS, to receive Provider Report Forms, or to obtain more information, please call (212) 442-3388*



**TALK TO US  
CNAP  
(212) 693-1419**

New York State law also requires that PRFs contain names of sexual or needle-sharing partners of the infected person known to medical providers or those whom the infected person wishes to have notified of their possible exposures. Providers can utilize and/or refer HIV+ persons to the NYC DOHMH Contact Notification Assistance Program (CNAP) at (212) 693-1419 for assistance in carrying out partner notification. **For more information about the New York State HIV reporting and partner notification law and CNAP, visit: [www.health.state.ny.us/nysdoh/hivaids/hivpartner/intro.htm](http://www.health.state.ny.us/nysdoh/hivaids/hivpartner/intro.htm)**

**Reported HIV/AIDS diagnoses and deaths occurring January 1, 2004 through June 30, 2004, and reported persons living with HIV/AIDS as of June 30, 2004<sup>1</sup>, by sex, in New York City**

	HIV diagnoses during 1/1/2004–6/30/2004 <sup>1</sup>						AIDS diagnoses 1/1/2004–6/30/2004 <sup>3</sup>		PLWHA as of 6/30/2004		Deaths 1/1/2004–6/30/2004	
	Total		Without AIDS		Concurrent with AIDS diagnosis <sup>2</sup>		N	%	N	%	N	%
	N	%	N	%	N	%						
<b>Total (Male and Female)</b>	<b>1,859</b>	<b>100.0</b>	<b>1,311</b>	<b>70.5</b>	<b>548</b>	<b>29.5</b>	<b>2,349</b>	<b>100.0</b>	<b>91,832</b>	<b>100.0</b>	<b>1,051</b>	<b>100.0</b>
<b>Female</b>	<b>593</b>	<b>100.0</b>	<b>427</b>	<b>72.0</b>	<b>166</b>	<b>28.0</b>	<b>736</b>	<b>100.0</b>	<b>27,999</b>	<b>100.0</b>	<b>355</b>	<b>100.0</b>
<b>Race/Ethnicity</b>												
Black	404	68.1	287	67.2	117	70.5	461	62.6	16,014	57.2	216	60.8
Hispanic	129	21.8	93	21.8	36	21.7	212	28.8	8,869	31.7	112	31.5
White	40	6.7	31	7.3	9	5.4	48	6.5	2,653	9.5	27	7.6
Asian/Pacific Islander	11	1.9	8	1.9	*	*	10	1.4	196	0.7	0	0.0
Native American	*	*	*	*	0	0.0	*	*	20	0.1	0	0.0
Other/unknown	6	1.0	*	*	*	*	*	*	247	0.9	0	0.0
<b>Age group (years)<sup>4</sup></b>												
0-12	*	*	*	*	*	*	*	*	652	2.3	*	*
13-19	18	3.0	17	4.0	*	*	8	1.1	680	2.4	*	*
20-29	108	18.2	86	20.1	22	13.3	83	11.3	2,159	7.7	12	3.4
30-39	180	30.4	133	31.1	47	28.3	217	29.5	7,446	26.6	73	20.6
40-49	178	30.0	127	29.7	51	30.7	276	37.5	10,851	38.8	153	43.1
50-59	78	13.2	51	11.9	27	16.3	109	14.8	4,818	17.2	83	23.4
60+	27	4.6	10	2.3	17	10.2	41	5.6	1,393	5.0	32	9.0
<b>Borough of residence</b>												
Manhattan	95	16.0	73	17.1	22	13.3	131	17.8	5,741	20.5	78	22.0
Brooklyn	185	31.2	126	29.5	59	35.5	203	27.6	8,479	30.3	121	34.1
Bronx	186	31.4	136	31.9	50	30.1	206	28.0	8,137	29.1	112	31.5
Queens	89	15.0	63	14.8	26	15.7	90	12.2	3,770	13.5	27	7.6
Staten Island	17	2.9	14	3.3	*	*	14	1.9	631	2.3	*	*
Unknown/outside NYC	21	3.5	15	3.5	6	3.6	92	12.5	1,241	4.4	12	3.4
<b>Transmission risk</b>												
Injection drug use history	68	11.5	55	12.9	13	7.8	130	17.7	6,279	22.4	138	38.9
Heterosexual <sup>5</sup>	237	40.0	166	38.9	71	42.8	256	34.8	10,103	36.1	98	27.6
Perinatal	*	*	*	*	*	*	*	*	1,258	4.5	*	*
Other	9	1.5	*	*	*	*	9	1.2	262	0.9	*	*
Unknown/under investigation <sup>6</sup>	275	46.4	198	46.4	77	46.4	337	45.8	10,097	36.1	112	31.5
<b>Clinical status as of 6/30/2004</b>												
HIV (non-AIDS)	n/a	n/a	n/a	n/a	n/a	n/a	n/a	n/a	10,990	39.3	43	12.1
AIDS	n/a	n/a	n/a	n/a	n/a	n/a	n/a	n/a	17,009	60.7	312	87.9
<b>Male</b>	<b>1,266</b>	<b>100.0</b>	<b>884</b>	<b>69.8</b>	<b>382</b>	<b>30.2</b>	<b>1,613</b>	<b>100.0</b>	<b>63,833</b>	<b>100.0</b>	<b>696</b>	<b>100.0</b>
<b>Race/Ethnicity</b>												
Black	583	46.1	386	43.7	197	51.6	720	44.6	24,772	38.8	339	48.7
Hispanic	401	31.7	282	31.9	119	31.2	530	32.9	20,410	32.0	231	33.2
White	248	19.6	193	21.8	55	14.4	321	19.9	17,058	26.7	117	16.8
Asian/Pacific Islander	26	2.1	17	1.9	9	2.4	29	1.8	805	1.3	*	*
Native American	0	0.0	0	0.0	0	0.0	0	0.0	47	0.1	*	*
Other/unknown	8	0.6	6	0.7	*	*	13	0.8	741	1.2	*	*
<b>Age group (years)<sup>4</sup></b>												
0-12	6	0.5	*	*	*	*	*	*	567	0.9	*	*
13-19	38	3.0	35	4.0	*	*	12	0.7	674	1.1	*	*
20-29	251	19.8	208	23.5	43	11.3	148	9.2	3,056	4.8	6	0.9
30-39	426	33.6	316	35.7	110	28.8	508	31.5	14,441	22.6	104	14.9
40-49	353	27.9	208	23.5	145	38.0	596	36.9	25,553	40.0	268	38.5
50-59	137	10.8	83	9.4	54	14.1	278	17.2	14,791	23.2	234	33.6
60+	55	4.3	29	3.3	26	6.8	68	4.2	4,751	7.4	80	11.5
<b>Borough of residence</b>												
Manhattan	385	30.4	295	33.4	90	23.6	474	29.4	22,831	35.8	207	29.7
Brooklyn	301	23.8	199	22.5	102	26.7	361	22.4	13,934	21.8	199	28.6
Bronx	291	23.0	199	22.5	92	24.1	335	20.8	11,955	18.7	180	25.9
Queens	198	15.6	118	13.3	80	20.9	221	13.7	8,586	13.5	67	9.6
Staten Island	20	1.6	12	1.4	8	2.1	26	1.6	1,025	1.6	16	2.3
Unknown/outside NYC	71	5.6	61	6.9	10	2.6	196	12.2	5,502	8.6	27	3.9
<b>Transmission risk</b>												
Men who have sex with men	613	48.4	479	54.2	134	35.1	589	36.5	25,066	39.3	122	17.5
Injection drug use history	110	8.7	75	8.5	35	9.2	277	17.2	15,602	24.4	302	43.4
Heterosexual <sup>5</sup>	191	15.1	105	11.9	86	22.5	223	13.8	6,675	10.5	83	11.9
Perinatal	6	0.5	*	*	*	*	*	*	1,181	1.9	*	*
Other	*	*	*	*	0	0.0	7	0.4	278	0.4	*	*
Unknown/under investigation <sup>6</sup>	343	27.1	217	24.5	126	33.0	513	31.8	15,031	23.5	182	26.1
<b>Clinical status as of 6/30/2004</b>												
HIV (non-AIDS)	n/a	n/a	n/a	n/a	n/a	n/a	n/a	n/a	21,509	33.7	73	10.5
AIDS	n/a	n/a	n/a	n/a	n/a	n/a	n/a	n/a	42,324	66.3	623	89.5

PLWHA=Persons living with HIV/AIDS. Cells representing 1-5 person(s) are marked with an asterisk (\*).

<sup>1</sup> For events reported by March 31, 2005.

<sup>2</sup> HIV diagnosed concurrently with AIDS (within 31 days of HIV diagnosis).

<sup>3</sup> AIDS was diagnosed in 2004 and includes concurrent HIV/AIDS diagnosis.

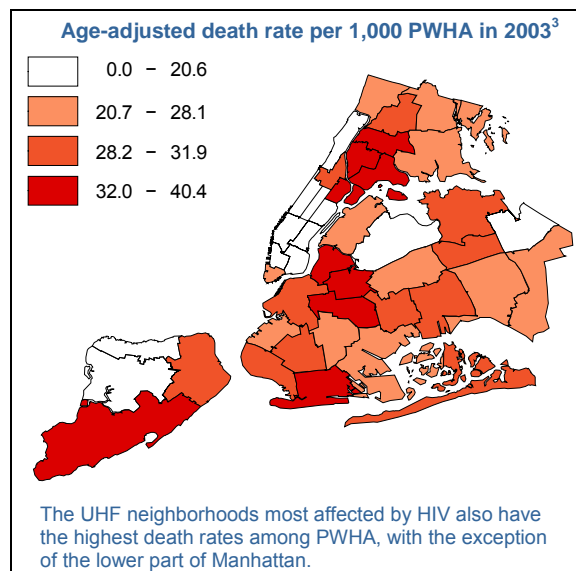
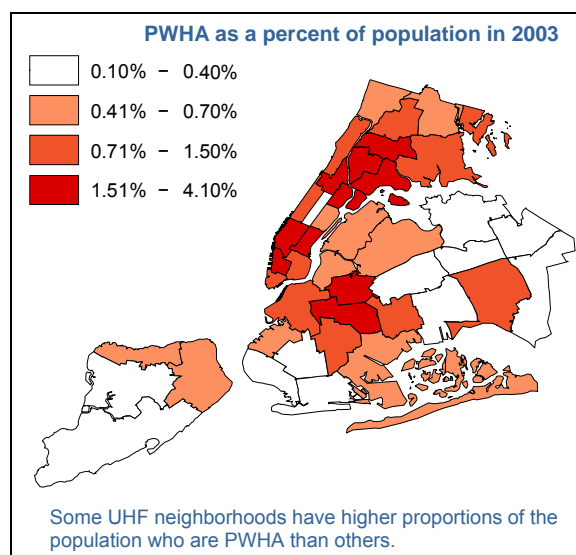
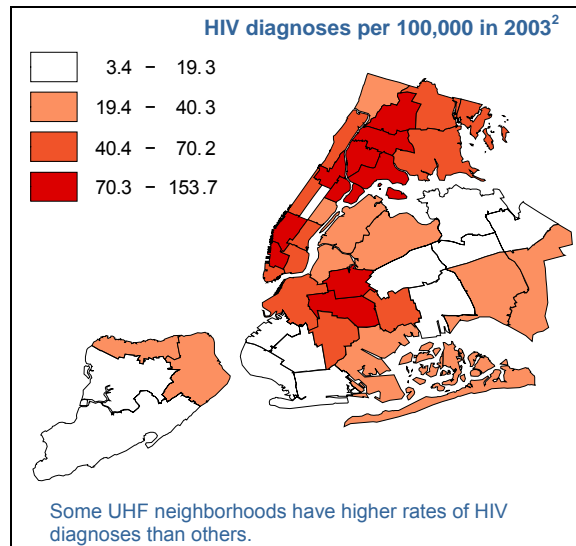
<sup>4</sup> For HIV and AIDS diagnoses, age at diagnosis; for PLWHA, age as of June 30, 2004; and for deaths, age at death.

<sup>5</sup> Includes persons with CDC-defined heterosexual risk in addition to persons with probable heterosexual transmission defined as a history of: a) sex with an HIV+ person of the opposite sex, an injection drug user, a bisexual male, or a person with hemophilia/coagulation disorder, b) heterosexual prostitution, c) sex with a prostitute of the opposite sex, d) multiple sex partners of the opposite sex, e) sexually transmitted disease, f) crack/cocaine use, or g) immigration from a country where heterosexual transmission of HIV predominates.

<sup>6</sup> Includes individuals with no risk information reported by the provider and for whom an expanded investigation has not been completed.

**Rates of reported HIV diagnoses, PWHA, and deaths among PWHA by United Hospital Fund (UHF) neighborhood, in 2003<sup>1</sup>**

	HIV diagnoses <sup>2</sup> per 100,000 population	Reported PWHA as percent of population	Age-adjusted death rate per 1,000 PWHA <sup>3</sup>	Population from 2000 Census
<b>Total</b>	<b>52.5</b>	<b>1.2</b>	<b>26.1</b>	<b>8,008,278</b>
Children (0-12 years)	1.7	0.1	6.8	1,429,677
Adults/Adolescents (13+ years)	63.6	1.4	27.1	6,578,601
<b>Bronx<sup>4</sup></b>	<b>78.2</b>	<b>1.5</b>	<b>31.3</b>	<b>1,327,690</b>
Crotona – Tremont	105.2	2.1	32.6	199,530
Fordham – Bronx Park	76.3	1.4	29.1	250,491
High Bridge – Morrisania	115.9	2.3	35.5	189,755
Hunts Point – Mott Haven	113.1	2.2	36.0	122,875
Kingsbridge – Riverdale	22.5	0.5	25.8	88,989
Northeast Bronx	41.4	0.7	20.9	185,998
Pelham – Throgs Neck	51.7	1.0	28.1	290,052
<b>Brooklyn<sup>4</sup></b>	<b>46.0</b>	<b>0.9</b>	<b>32.1</b>	<b>2,465,326</b>
Bedford/Stuyvesant – Crown Heights	102.4	1.7	38.4	317,296
Bensonhurst – Bay Ridge	7.7	0.2	31.9	194,558
Borough Park	11.4	0.3	28.3	324,411
Canarsie – Flatlands	32.9	0.5	27.4	197,819
Coney Island - Sheepshead Bay	16.0	0.3	38.6	286,901
Downtown – Heights – Park Slope	50.8	1.3	28.3	214,696
East Flatbush – Flatbush	62.2	1.1	25.7	316,734
East New York	70.2	1.3	31.7	173,716
Greenpoint	28.9	0.7	36.7	124,449
Sunset Park	18.3	0.6	27.5	120,441
Williamsburg – Bushwick	74.1	1.6	33.5	194,305
<b>Manhattan<sup>4</sup></b>	<b>76.6</b>	<b>1.9</b>	<b>21.8</b>	<b>1,529,375</b>
Central Harlem – Morningside Heights	133.0	2.5	30.8	151,113
Chelsea – Clinton	153.7	4.1	17.5	122,998
East Harlem	132.3	2.5	40.4	108,092
Gramercy Park – Murray Hill	65.9	1.6	18.2	124,477
Greenwich Village – Soho	82.4	2.2	15.7	83,709
Lower Manhattan	68.0	1.2	25.7	30,895
Union Square – Lower East Side	47.7	1.5	17.7	197,138
Upper East Side	19.7	0.6	12.1	218,167
Upper West Side	42.3	1.4	20.6	222,109
Washington Heights – Inwood	67.2	1.2	20.5	270,677
<b>Queens<sup>4</sup></b>	<b>27.1</b>	<b>0.5</b>	<b>23.0</b>	<b>2,242,159</b>
Bayside – Little Neck	3.4	0.1	0.0	88,164
Flushing – Clearview	8.6	0.2	28.3	255,542
Fresh Meadows	12.9	0.2	29.3	93,148
Jamaica	40.3	0.8	24.5	285,568
Long Island City – Astoria	33.0	0.6	21.2	220,960
Ridgewood – Forest Hills	19.1	0.3	23.1	240,901
Rockaway	32.8	0.7	28.5	106,738
Southeast Queens	23.6	0.4	24.1	203,670
Southwest Queens	19.3	0.4	29.3	269,952
West Queens	35.0	0.7	18.1	477,516
<b>Staten Island<sup>4</sup></b>	<b>16.5</b>	<b>0.4</b>	<b>27.5</b>	<b>443,728</b>
Port Richmond	23.9	0.5	18.4	62,788
South Beach – Tottenville	4.4	0.2	37.6	179,892
Stapleton – St. George	37.9	0.7	31.9	116,227
Willowbrook	5.9	0.1	7.8	84,821



PWHA = Persons with HIV/AIDS

<sup>1</sup> Based on data reported through December 31, 2004.

<sup>2</sup> Includes diagnoses of HIV without AIDS and HIV concurrent with AIDS.

<sup>3</sup> Age-adjusted to the city-wide population of PWHA at the end of 2003.

<sup>4</sup> Borough level data include persons residing in unknown UHF neighborhoods.