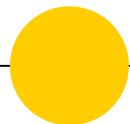


# The NYC DOHMH Black and Latina Women Workgroup Uses Community Engagement to Improve Ryan White Part A services



Nadine Alexander, Sahani Chandraratna, Octavia Lewis, Kristina Rodriguez  
New York City Department of Health and Mental Hygiene – Care and Treatment



A solid yellow circle is positioned to the left of the word "Hello!".

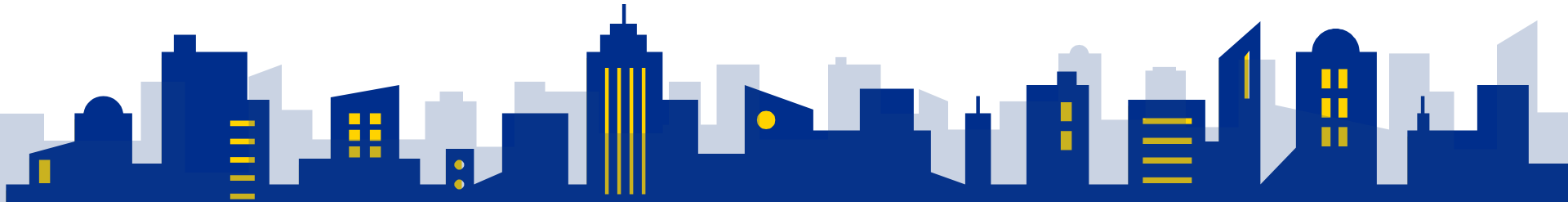
# *Hello!*

*We are...* Nadine Alexander

Sahani Chandraratna

Octavia Lewis

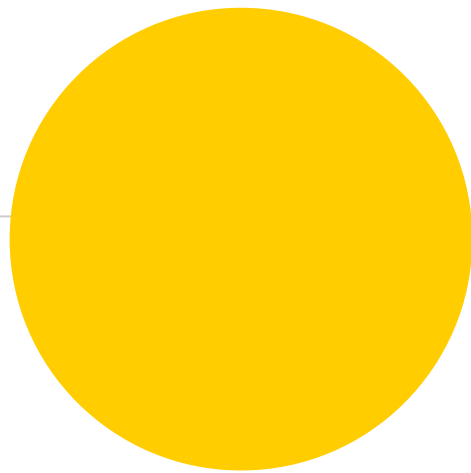
Kristina Rodriguez



# Agenda

---

- The DOHMH Race to Justice Initiative
- NYC RWPA services
- Black and Latina women in RWPA services
- NYC Black and Latina Subcommittee
  - What we've done
  - What we plan on doing
- Committee member perspective



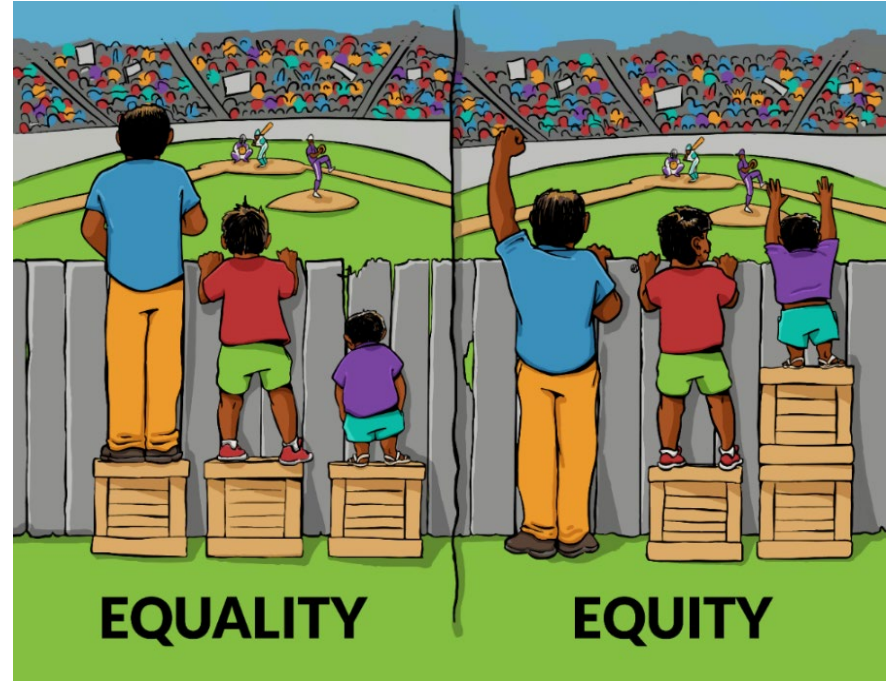
# NYC Race to Justice Initiative

# Equity vs. Equality

- Achieving the **highest level** of health for all people.
- No one is kept from reaching the highest level of health because of **social position** or **social identities**.

Job status  
Education  
Income  
Wealth  
Immigration  
status  
Incarceration  
history  
And others...

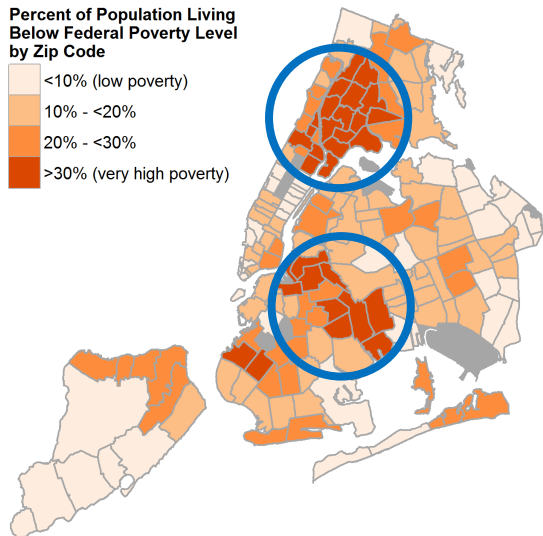
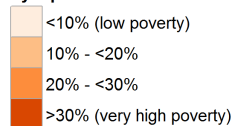
Race  
Gender  
Identity  
Ethnicity  
Sexual  
Orientation  
Ability  
Religion  
And others...





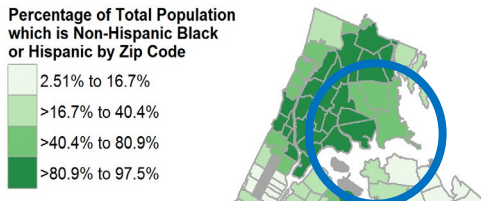
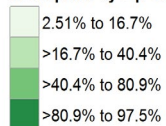
# Health Inequities

Percent of Population Living Below Federal Poverty Level by Zip Code

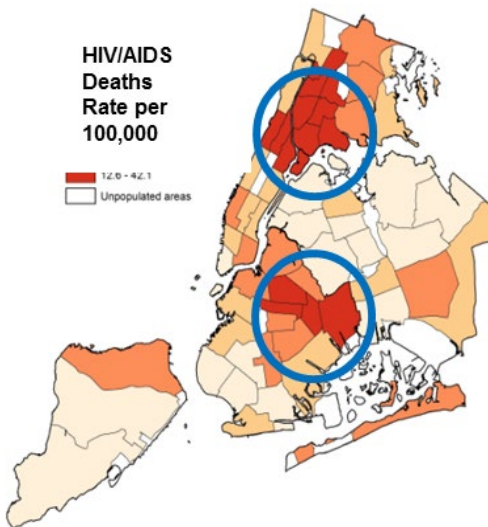
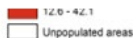


Data source: American Community Survey poverty data from 2010-2014

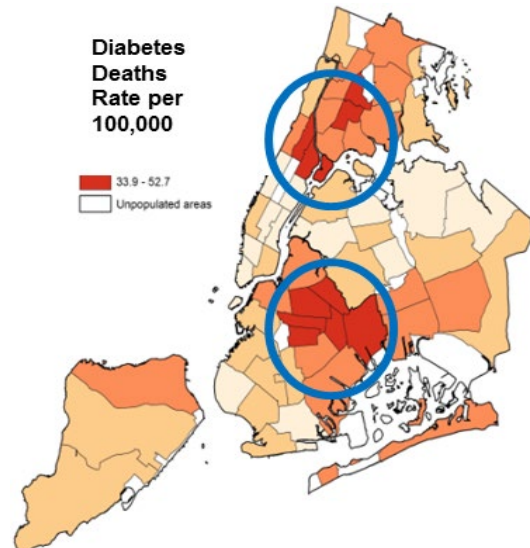
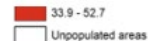
Percentage of Total Population which is Non-Hispanic Black or Hispanic by Zip Code



HIV/AIDS Deaths Rate per 100,000



Diabetes Deaths Rate per 100,000



# Building a Foundation for Equity: NYC Health's Race to Justice



**TEDMED**

Attend

Speakers

TEDMED Live

Talks

The Hive

Partnerships

About

Blog





# Race to Justice

---

Racial equity and social justice are necessary  
to achieve our mission

Promote racial equity and social justice, and build internal capacity, to  
improve health outcomes and close health inequities

**RACE TO  
JUSTICE** | Advancing  
Racial Equity  
& Social Justice



# Mission and Goals

---

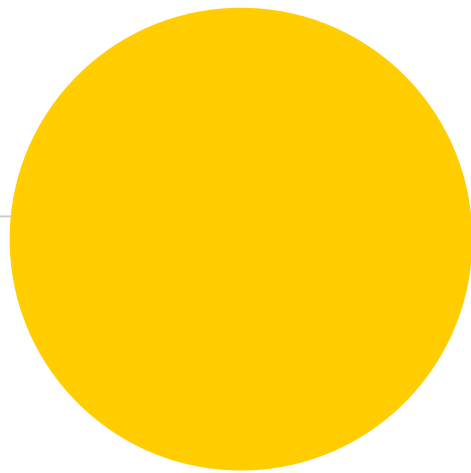
- To foster community and advance racial equity and social justice through community building events and town halls that educate, inform, and inspire change.
  - Short term: Build awareness and educate staff on racism and other forms of systemic oppression and the impact of such injustices on our work.
  - Long-term: Encourage and strengthen cross-program collaborations within the Bureau to counter racism and other forms of systemic oppression.

# Race to Justice: A DOHMH-wide Initiative

Building staff awareness about racism & other systems of oppression and skills to address these systems

Strengthening collaborations with NYC's communities to counter these systems

- Examining how structural racism & other systems of oppression impact DOH's work
- Implementing policies to lessen these impacts



# NYC RWPA Services

# About the Ryan White HIV/AIDS Program

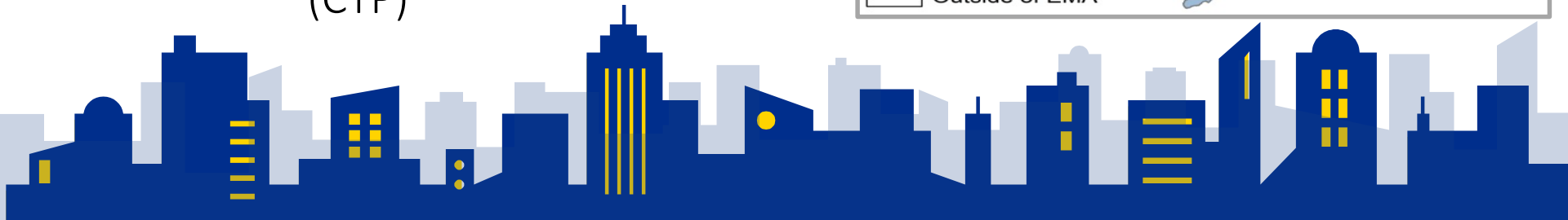
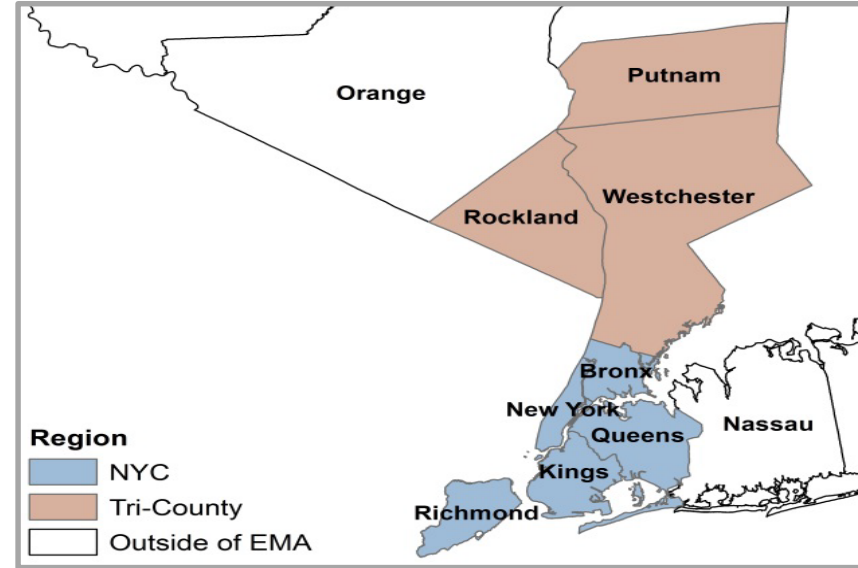
---

- Largest Federal program focused specifically on providing HIV care and treatment services to people living with HIV (PLWH).
- The Ryan White legislation was first enacted in 1990 as the Ryan White Comprehensive AIDS Resources Emergency (CARE) Act
- Legislation divided into several portions called Parts

# Overview: NY EMA Ryan

## ● White Part A (RWPA)

- Grantee: NYC Department of Health and Mental Hygiene (DOHMH)
  - Bureau of HIV/AIDS Prevention and Control, Care & Treatment Program (CTP)



# NY EMA Ryan White Part A Program by the Numbers



15378

Clients served who are HIV+



88%

Are From Racial/Ethnic Minority Populations



70%

Are enrolled in Medicaid



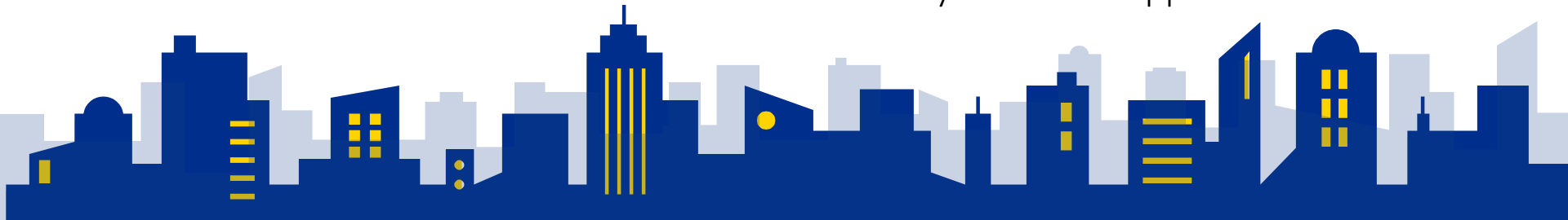
20%

Are uninsured

# RWPA Service Categories



- ADAP
- Case Management (non-Medical)
- Early Intervention Services
- Food Bank/Home-Delivered Meals
- Harm Reduction Services (Outpt. Substance Abuse Services)
- Health Education/Risk Reduction
- Housing Services
- Legal Services
- Medical Case Management
- Mental Health Services
- Medical Transportation (Tri-county only)
- Oral Health Care (Tri-county only)
- Psychosocial Support Services



# Implementing “Race to Justice”

- In June 2018, a cross-program “Race to Justice” collaborative advisory group was created to monitor progress on program efforts at addressing health equity
  - Includes CTP Race to Justice Workgroups
    - Older People Living with HIV
    - Mortality
    - Youth
    - Housing
    - Transgender Women of Color
    - Cisgender Women of Color

**RACE TO JUSTICE** | Advancing  
Racial Equity  
& Social Justice





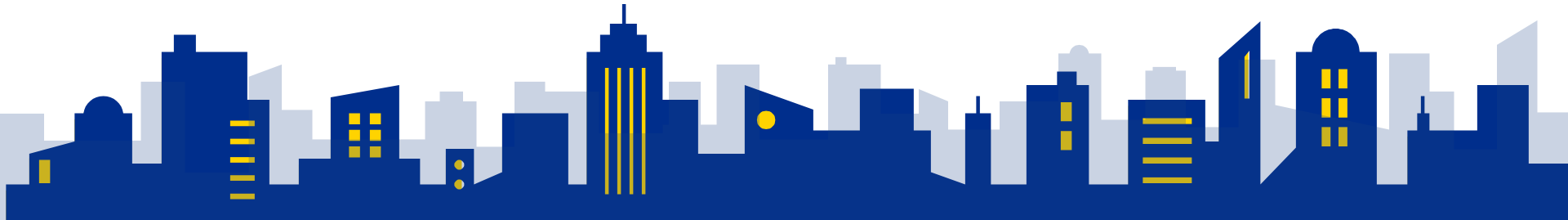
# Population Focus

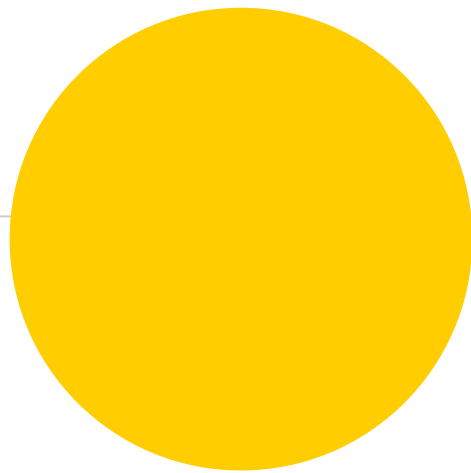
## Cisgender definition

- People whose gender identity and gender expression align with their assigned sex at birth (i.e., the sex listed on their birth certificates).

## Rationale

- Existing Transgender Women of Color workgroup
  - Recommended we explicitly define the target population
- Cisgender and Transgender Women living with HIV have different needs and priorities





# Black and Latina women in RWPA services

Nadine Alexander, ScM  
Research and Evaluation Unit (REU)  
Care and Treatment Program (CTP)

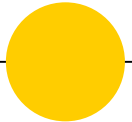


# Agenda

---

- ⦿ HIV among women in NYC in 2017
- ⦿ Black and Latina Women with HIV in RWPA, 2017
  - Demographics
  - Years since diagnosis
  - Care Continuum data

# HIV among women in NYC in 2017



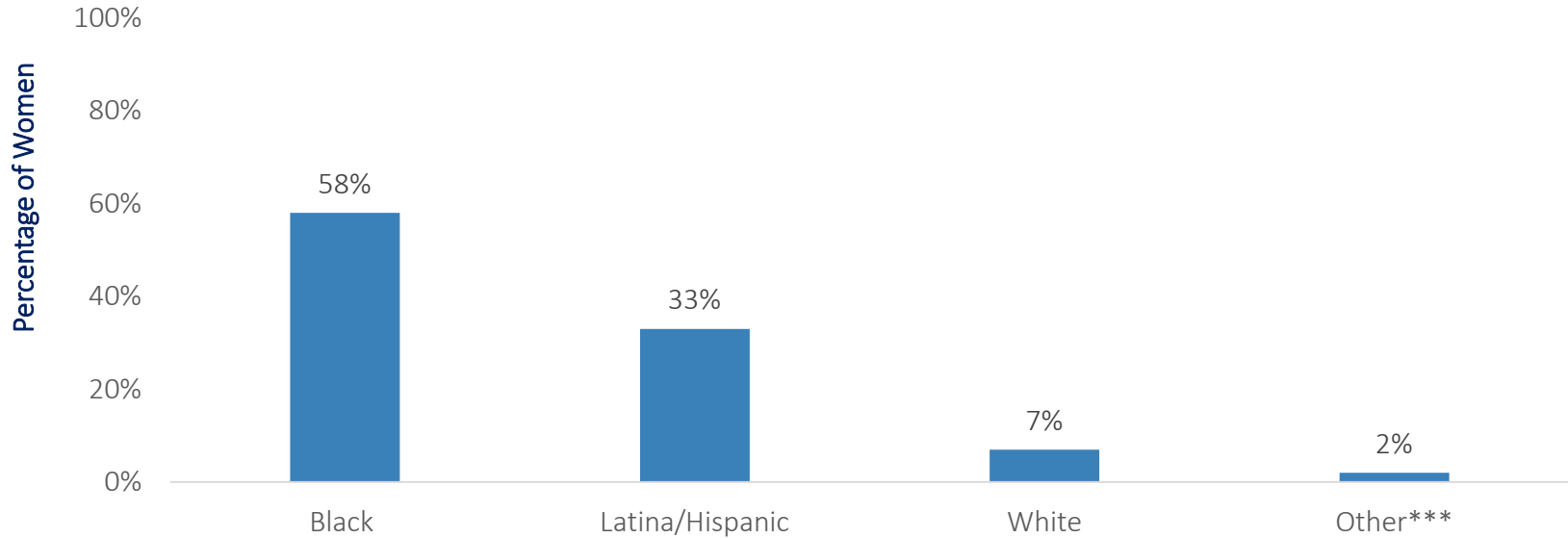
# HIV Among Women in NYC, 2017\*

- At the end of 2017, 125,884 people in NYC were living with HIV
  - 34,775 (28%) were women\*\*
    - 449 women were newly diagnosed with HIV in 2017
      - The majority were Black (61%) and Latina (27%) women

\*Source: HIV Surveillance Annual Report, 2017, New York City Department of Health and Mental Hygiene

\*\*Includes transgender women

# Race/ethnicity of Women\* Living with HIV in NYC, 2017\*\*



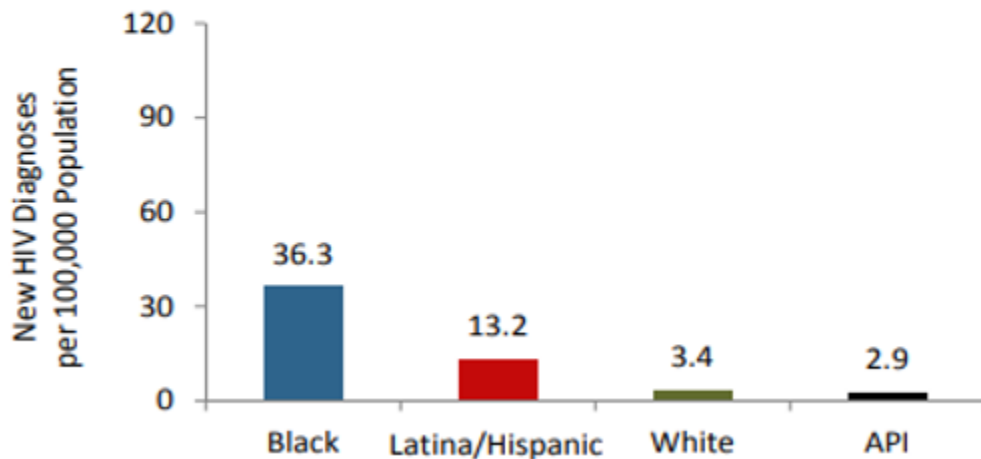
\*Includes transgender women

\*\*Source: HIV Surveillance Annual Report, 2017, New York City Department of Health and Mental Hygiene

\*\*\*Other includes Asian/Pacific Islanders, clients who reported more than one racial category, and clients whose race is unknown or missing

# New Diagnoses among Women\*\*, NYC 2017

**FIGURE 6.1:** HIV<sup>1</sup> diagnosis rates<sup>2</sup> among 13-59 year old females<sup>3</sup> by race/ethnicity<sup>4</sup>, NYC 2017



In 2017, the HIV diagnosis rate among Black females was 2.7 times higher than the rate among Latina/Hispanic females and over 10 times higher than the rate among White females.

API=Asian/Pacific Islander.

<sup>1</sup>Includes diagnoses of HIV without AIDS and HIV concurrent with AIDS.

<sup>2</sup>Rates calculated using Health Department 2016 population estimates, modified from US Census Bureau intercensal population estimates, updated September 2017.

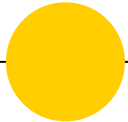
<sup>3</sup>Includes transgender women.

<sup>4</sup>Native American and multiracial groups not shown because of small numbers.

\*Source: HIV Surveillance Annual Report, 2017, New York City Department of Health and Mental Hygiene

\*\*Includes transgender women

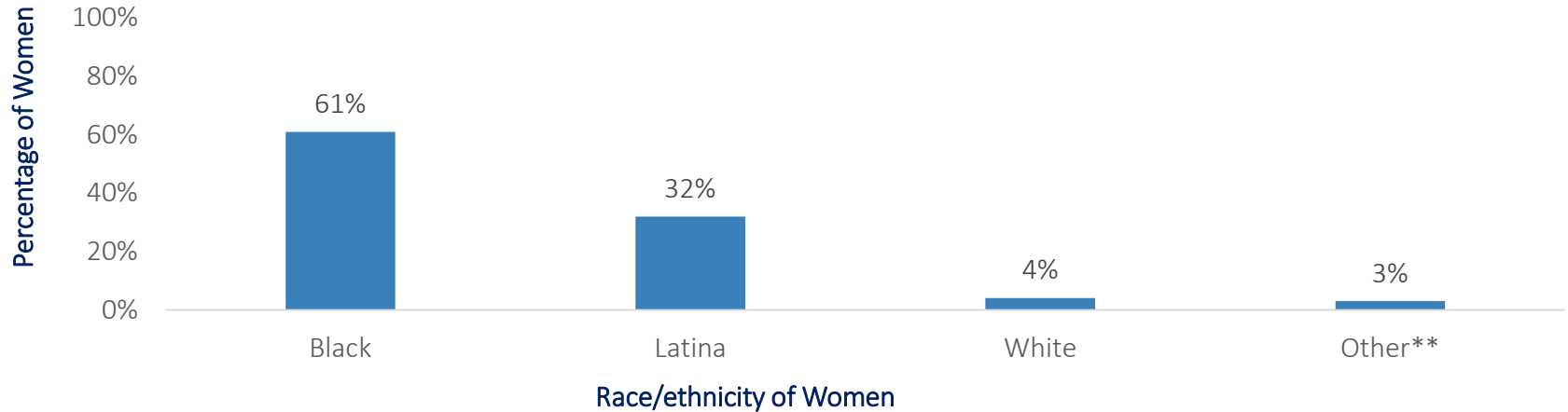
# Black and Latina Women with HIV in RWPA, 2017





# Race/ethnicity of Women\* Living with HIV in RWPA, 2017

- In 2017, 4,008 (31%) of all people living with HIV were women



\*Includes only cisgender women

\*\*Other includes Asian/Pacific Islanders, clients who reported more than one racial category, and clients whose race is unknown or missing

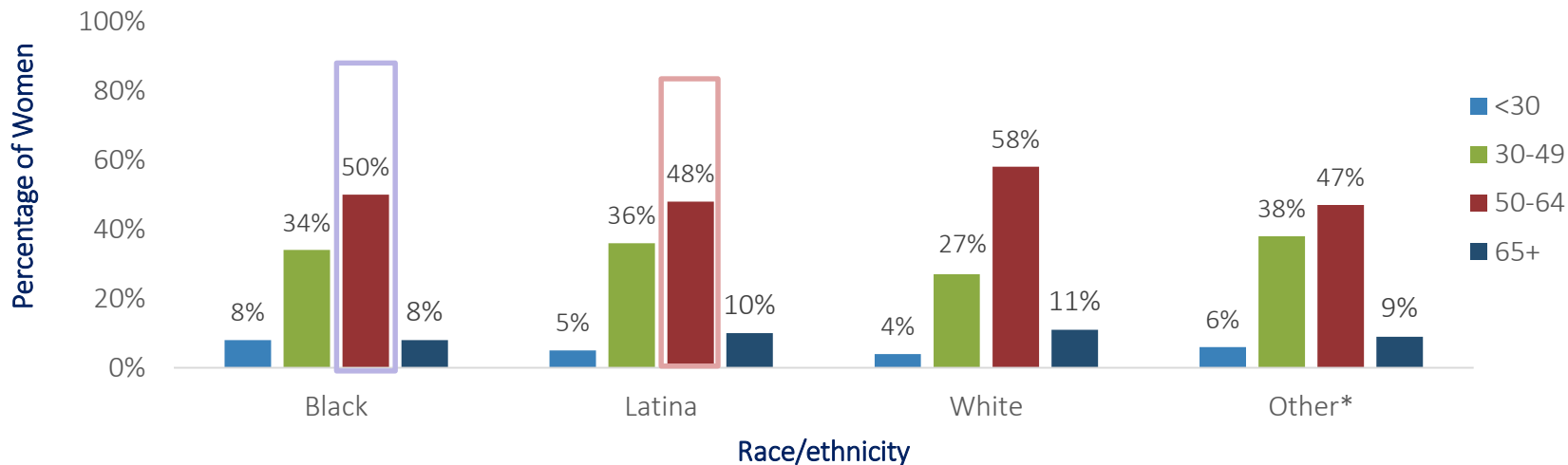
# New Diagnoses

---

- ◉ Of the 276 RWPA clients newly diagnosed with HIV in 2017
  - 52 (19%) were women
    - An overwhelming majority of those women were Black (77%) and Latina (21%)

## Age Group

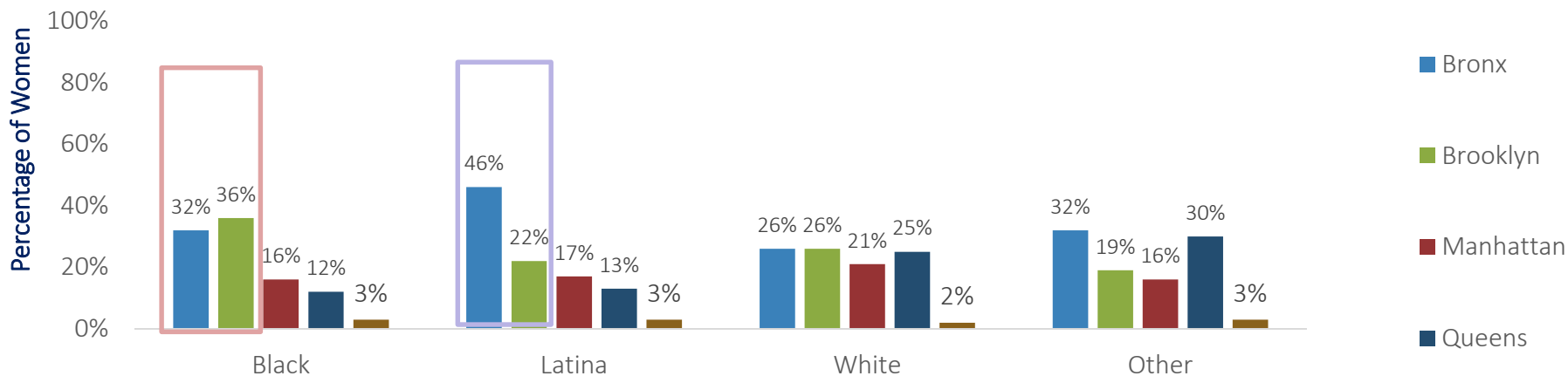
- Across all race/ethnicities, roughly half of the women in RWPA were 50 or older



\*Other includes Asian/Pacific Islanders, clients who reported more than one racial category, and clients whose race is unknown or missing

# Borough of Residence

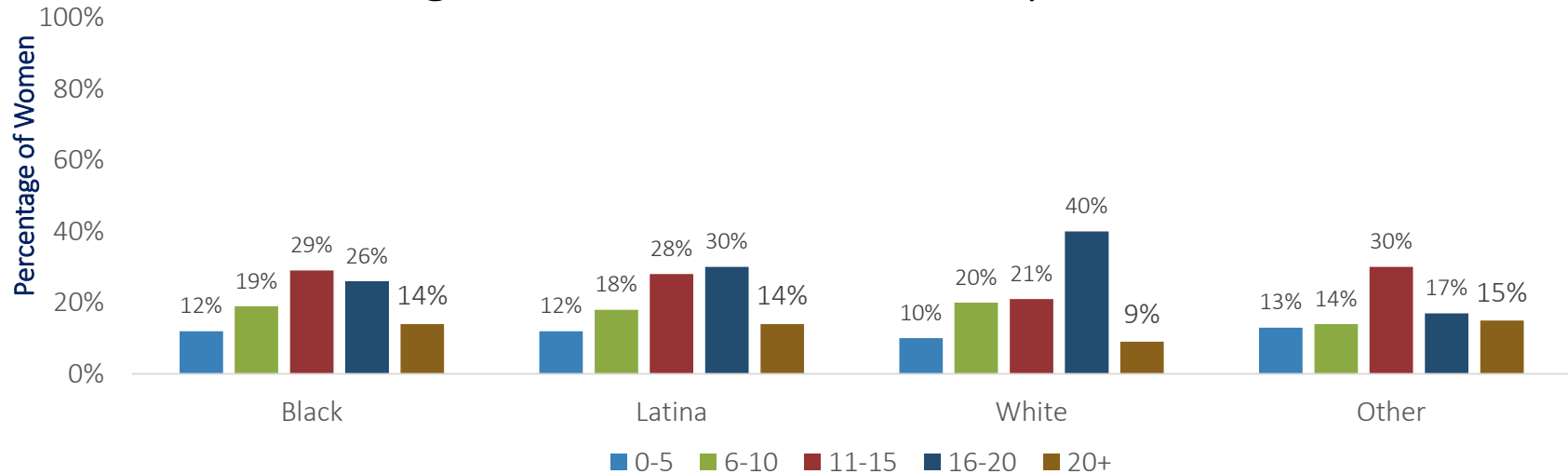
- More than half of Black (68%) and Latina (68%) women in RWPA live in the Bronx and Brooklyn



\*Other includes Asian/Pacific Islanders, clients who reported more than one racial category, and clients whose race is unknown or missing

# Years Since Diagnosis

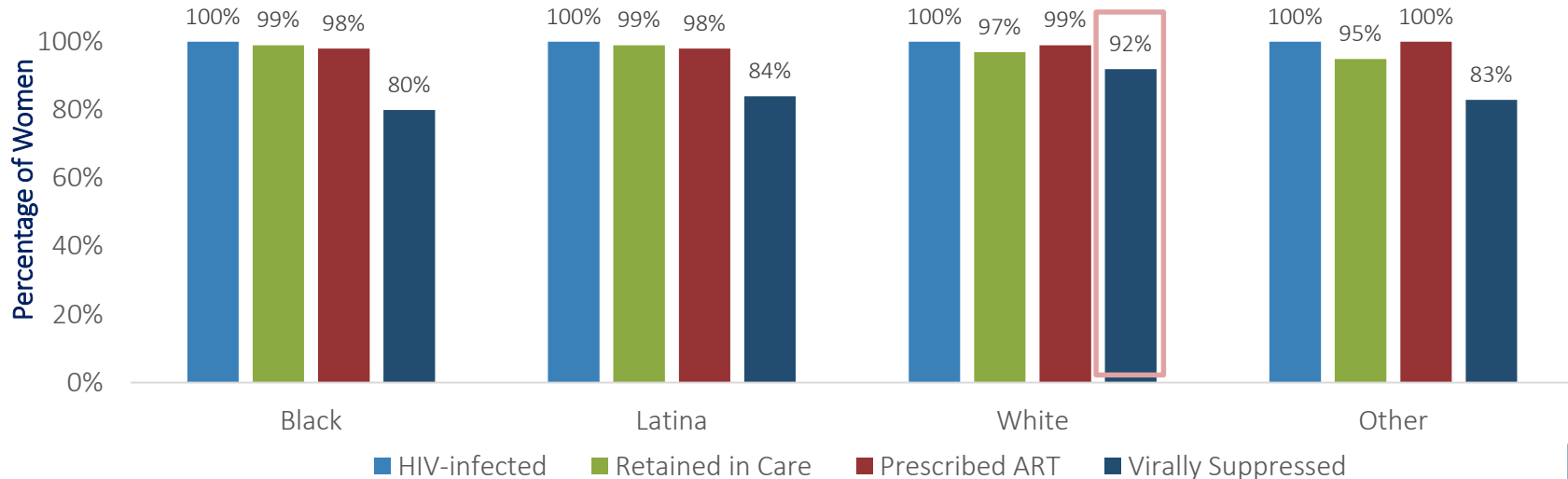
- Across all race/ethnicities, a large proportion of women in RWPA have been living with HIV for at least 11 years



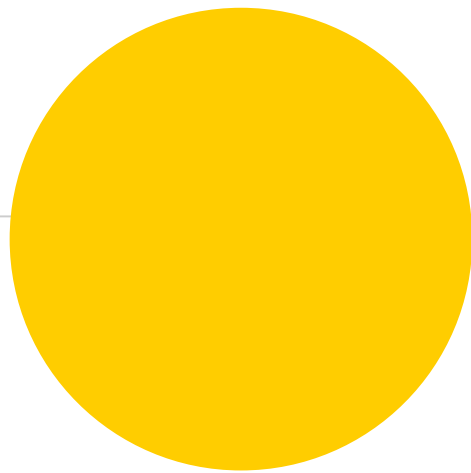
\*Other includes Asian/Pacific Islanders, clients who reported more than one racial category, and clients whose race is unknown or missing

# Proportion of Women Engaged in Selected Stages of the HIV Care Continuum, 2017

- The highest proportion of women in RWPA who were virally suppressed in 2017 were White



\*Other includes Asian/Pacific Islanders, clients who reported more than one racial category, and clients whose race is unknown or missing



# NYC Black and Latina Subcommittee

# Community-based Participatory Research (CBPR)

- 'A collaborative approach to research that equitably involves all partners in the research process and recognizes the unique strengths that each brings'
  - In traditional research, individuals other than the research participants define the research issues, determine how research is done, and decide how outcomes are used
  - CBPR is predicated on mutual and shared ownership of the research and decision making process
  - Decrease disparities
- Next steps:
  - Identify aims and corresponding goals



# Women's Advisory Board

- Comprised of a diverse group of dedicated, passionate, community leaders who are committed to improving HIV prevention and care for women in NYC through dialogue and concerted action
- Convened by the NYC DOHMH in 2016 through collaboration with:
  - New York Knows
  - DOHMH HIV Planning Group
  - DOHMH's Center for Health Equity



*WOMEN'S ADVISORY BOARD*

# Subcommittee



## Logistics

---

- We meet every other month from 12:30 – 1:30 (before the scheduled general WAB meeting)
- Consumers who join the subcommittee will receive roundtrip metro cards
- Snacks and beverages
- Meetings are driven by committee-informed agendas and established group agreements
- To date, we have held two subcommittee meetings

# Primary Goals

---

- Population Focus

- ~~— Women of color workgroup~~

- Black and Latina women subcommittee<sup>NEW</sup>

- Objectives

- Increase the amount of effective and responsive services we offer to Black and Latina women in the RWPA portfolio

- Decrease disparities for Black and Latina women throughout the HIV Care Continuum

- Reduce general health outcome disparities in Black and Latina women living with HIV

# Some questions we want to answer...

- What are the biggest barriers to engaging Black and Latina women in NYC?
- What are your methods for engaging Black and Latina women?
- Is the DOHMH creating barriers to engaging Black and Latina women? What are they?
- What are some strategies to improve client retention rates?
- What is the biggest unmet need you see for HIV+ Black and Latina women in NYC?



# Activities

---

- Evaluate the RWPA portfolio using eSHARE data
  - Assess where Black and Latina women are being served in the RWPA portfolio and what services they receive
  - Identify gaps in the care continuum
- Identify appropriate outreach venues
  - Faith based organizations
  - Cultural events
  - Pediatric centers
  - After school programs
- Develop relationships with key community stakeholders
- Collaborate with community stakeholders to develop responsive and relevant deliverables



# In the works...

---

- ◉ What we've done
  - Evaluate/ing the RWPA portfolio using eSHARE data
    - Enrollment
    - Demographic and clinical characteristics
    - Proximity to Services
    - Comorbidities
    - Mental Health Diagnosis
    - Viral Suppression

# In the works...(cont'd)

- Cont'd
  - Collaborated with Women's Advisory Board to establish a Black and Latina sub-committee with participants who include:
    - DOHMH staff from the Black and Latina CTP Race to Justice workgroup
    - Service providers
    - Consumers of HIV services in NYC
- Conduct subcommittee meetings

# In the works...(cont'd)

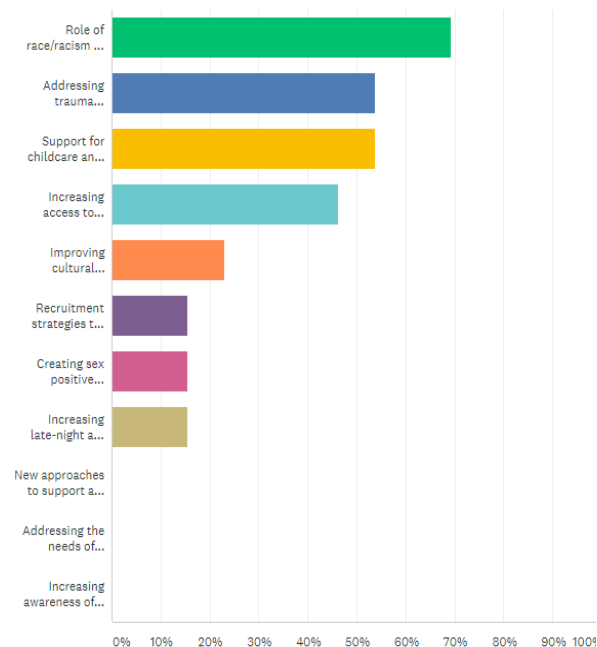
- Cont'd
  - Focus our work to achieve tangible outcomes
    - Examples: engagement, retention, etc.



# Women's Advisory Board Survey Results

Please select up to 3 topics that you see as the greatest unmet needs of Black and Latina women living with HIV in NYC

ipped: 0



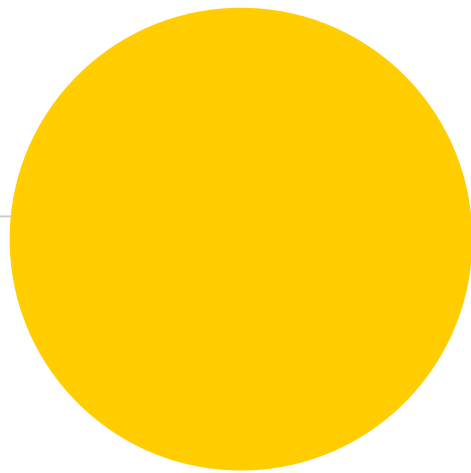
ANSWER CHOICES	RESPONSES	
▼ Role of race/racism and stigma in the treatment of Black and Latina women living with HIV.	69.23%	9
▼ Addressing trauma experienced by Black and Latina Women living with HIV by increasing trauma-informed approaches and services	53.85%	7
▼ Support for childcare and family responsibilities to assist with engagement in HIV care (or health care in general)	53.85%	7
▼ Increasing access to comprehensive social support programs for Black and Latina women with HIV	46.15%	6
▼ Improving cultural sensitivity/cultural humility among service providers in the HIV care settings	23.08%	3
▼ Recruitment strategies to engage and retain Black and Latina women in HIV care	15.38%	2
▼ Creating sex positive environments in healthcare settings	15.38%	2
▼ Increasing late-night and weekend hours of operation for service providers	15.38%	2
▼ New approaches to support and sustain medication adherence	0.00%	0
▼ Addressing the needs of long-term survivors, including women who acquired HIV perinatally	0.00%	0
▼ Increasing awareness of the services available for people living with HIV	0.00%	0
Total Respondents: 13		



# In the works...

---

- ⦿ What next...
  - Ongoing recruitment to the subcommittee
    - Open up the Black and Latina sub-committee to additional providers and consumers
      - Specifically RWPA service providers
  - Focus the work of our subcommittee
    - Conduct a root cause analysis to hone in on tangible objectives



# Subcommittee Perspective

# Subcommittee

## Perspective

---

- ◉ Providers experience
- ◉ Experience with and expectations of the subcommittee
- ◉ Importance with working with DOHMH to make decisions



# Thanks!

*Any questions ?*

You can find us at:

- Nadine Alexander: [nalexander@health.nyc.gov](mailto:nalexander@health.nyc.gov)
- Sahani Chandraratna: [schandraratna@health.nyc.gov](mailto:schandraratna@health.nyc.gov)
- Kristina Rodriguez: [krodriguez2@health.nyc.gov](mailto:krodriguez2@health.nyc.gov)