

COVID-19 Health Equity Through Collective Action

Year-end Impact Report:
July to December 2022

Building Trust Through Health Equity¹



The New York City (NYC) Department of Health and Mental Hygiene's (Health Department) Public Health Corps (PHC) partners with community groups and community health workers in historically marginalized communities to eliminate COVID-19 inequities through outreach and education. PHC has partnered with 93 community-based organizations (CBOs) and 22 faith-based organizations in 75 Taskforce on Racial Inclusion and Equity (TRIE) priority neighborhoods. Sharing data and information has been key for PHC in building relationships and trust with community partners and developing strategies to reach people in need.

PHC has made a lot of progress in achieving vaccine equity in TRIE priority neighborhoods. In June 2021, vaccination rates were 11% lower

among TRIE community residents than non-TRIE community residents. In response, PHC aimed to achieve and maintain a vaccine rate differential of less than 10%. As of December 2022, the differential is 5%. We will keep working with community partners to promote vaccination, share information and provide resources in its recovery efforts.

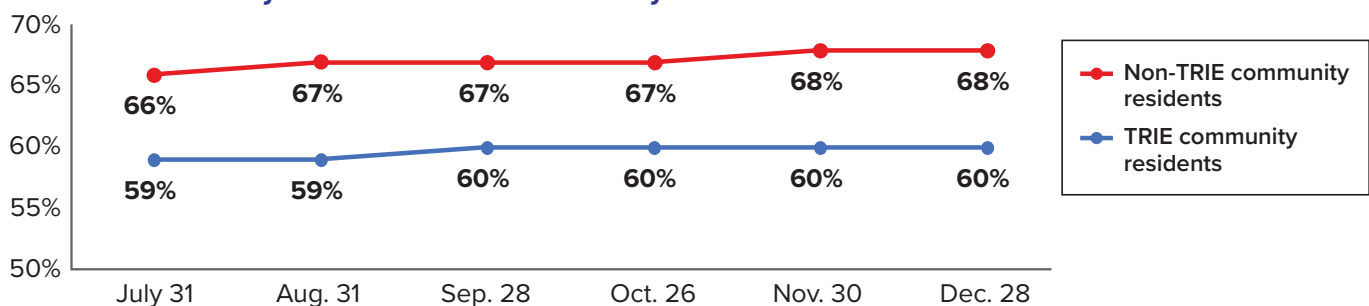
“

The community is very happy to see that there is an organization willing to meet them where they are [and] go the extra mile and help them with anything that they need. Even if the organization itself may not offer a specific support, [the community counts] on us to refer them to a place that does.

— Mexican Coalition

”

Percentage of Black New Yorkers Who Completed Their COVID-19 Primary Vaccine Series Between July and December 2022



PHC engaged with
717,550
community
members
through street
outreach.



CBOs made
233,278
COVID-19 referrals:
198,895 to vaccination
sites and 34,383
to testing sites.



PHC held 37 capacity
building trainings for
1,986
CBO staff
members.



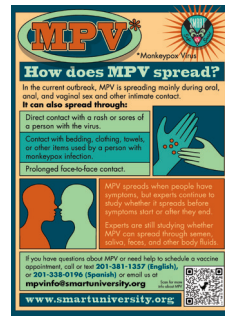
¹Where everyone has the opportunity to realize their full health potential

Response to the Mpox Outbreak

In Summer 2022, NYC became the epicenter of the mpox outbreak. Inequities in health care, especially for residents in historically underserved communities, were worsened by homophobia, transphobia and racism. To rapidly combat these inequities, PHC worked to mobilize 29 new community partners.

Inequities in mpox infection and vaccination appeared early in the outbreak. At first, vaccines were only available at one location in Central Manhattan. The Health Department provided real-time data on the demographics of the outbreak to community partners, who reserved vaccination appointments in areas with a large number of health and socioeconomic disparities and mpox cases. Partnerships with the LGBTQ+ community were also critical in the City's mpox response.

Mpox cases peaked around 70 per day in late July and dropped quickly due to widespread vaccination and information campaigns. The



City's rapid response limited mpox cases to about 3,800 and resulted in more than 150,000 vaccine doses being administered during the six-month outbreak.

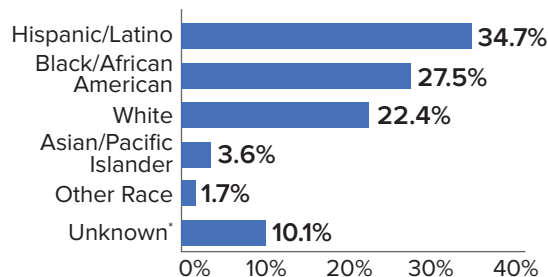
“

We are following Dr. Watkins' [a Health Department equity advisor] advice to tell community members that we are 'out here talking to everyone about mpox' in order to alleviate some of the stigma that people might feel when engaging with us.

— SMART University (Harlem)

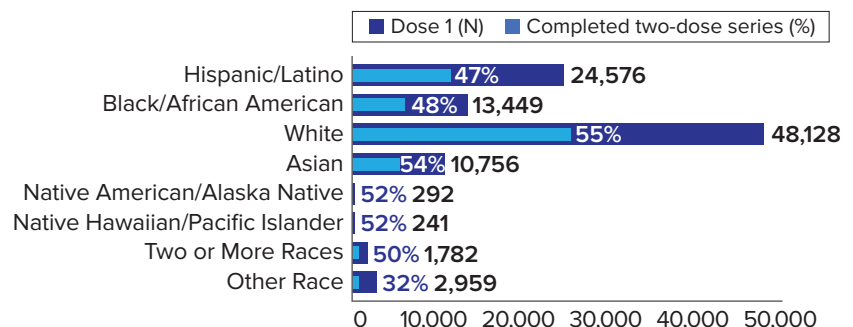
”

Mpox Cases by Race and Ethnicity (May 19 Through Dec. 31, 2022)

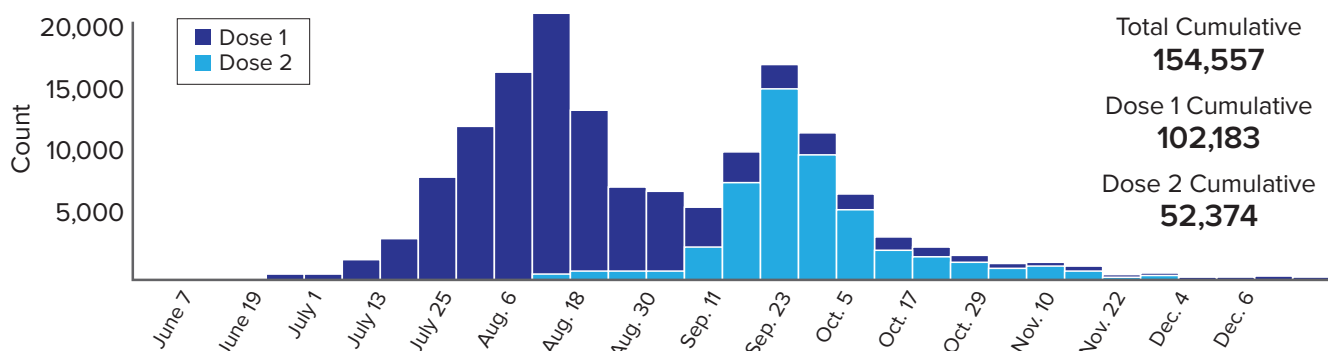


*Unknown due to missing in the Citywide Immunization Registry

Mpox Vaccinations by Race and Ethnicity (May 25 Through Dec. 31, 2022)

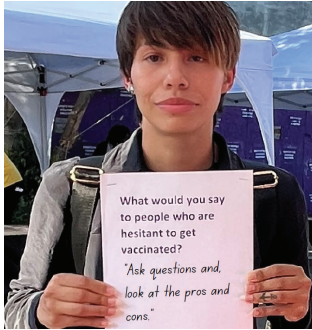


Weekly Mpox Vaccinations (May 25 Through Dec. 31, 2022)



Charts adapted from on.nyc.gov/mpox-data-summary.

COVID-19 Recovery and Community Wellness



PHC continues to address the consequences of COVID-19 that have disproportionately affected New Yorkers in historically underserved communities, including loss of employment and housing, disruptions to education, food insecurity,² and behavioral and mental health issues.

PHC strives to increase TRIE communities' access to COVID-19 prevention, treatment and care. We also prioritize community-based needs and solutions. Between July and December 2022, community partners referred 265,534 TRIE community residents to social and non-COVID-19 health services. PHC also supports communities through its health

literacy and youth and family engagement programs as well as other community building initiatives.

PHC has been able to quickly respond to Health Department priorities, while including health equity and anti-racist strategies in its work. PHC's partnerships with the community also help ensure rapid and culturally responsive strategies to future health emergencies in NYC.

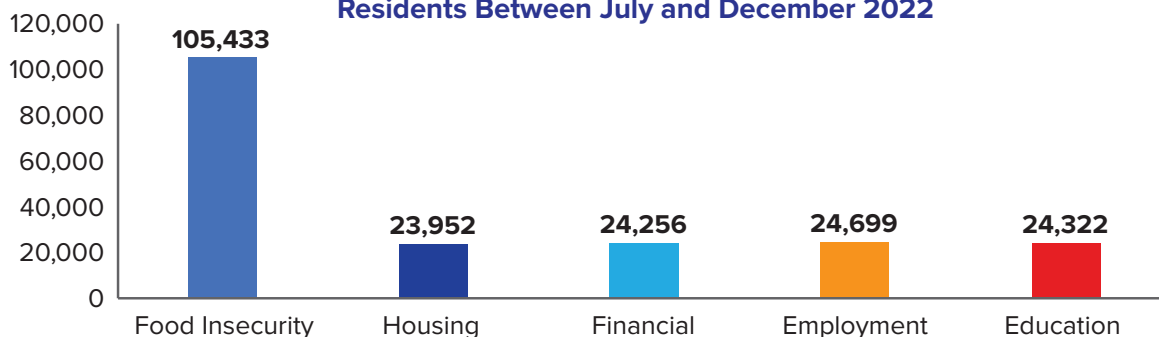
“

Our team was able to provide [a community resident] with clothes for her and her children as well as local resources to BMS Family Health [and Wellness Centers], which provides medical care to families in East New York. She was so extremely grateful to come across our location and our amazing team. She left knowing that she has support from a local agency with an open-door policy that cares and speaks her language.

— Brooklyn Community Services

”

Number of Referrals Made to TRIE Community Residents Between July and December 2022



Health Equity Goals Through June 30, 2023

25%

of eligible TRIE community residents age 65 and older receive their bivalent vaccines.



65%

of Black TRIE community residents receive their COVID-19 vaccines.



50%

of children ages 5 to 12 living in TRIE community residences receive their COVID-19 vaccines.

²Lack of consistent access to enough food in a household for living an active, healthy life