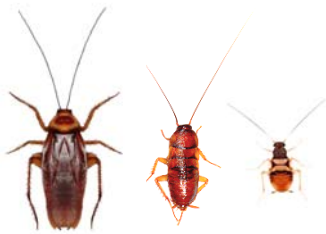


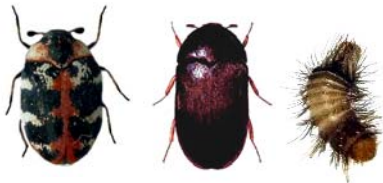
Is it a Bed Bug, Cockroach or Carpet Beetle?



Bed Bugs: Reddish brown, flattened and oval in shape; about 1/5 inch long; short thick antennae; dark protruding eyes and wing-like structures on either side of the head; Immature bed bugs are similar to adult, about the size of a poppy seed and yellowish-white in color.



Cockroaches: dark brown to reddish mahogany, flattened, oval in shape; 1 1/5 - 2 inches long; long thin antennae; large eyes and membranous wings; abdomen with tail-like structures; Immature cockroaches are similar to adults, smaller in size and without wings



Carpet Beetles: Round, solid brown to blackish, or have irregular pattern of white, brown and orange scales; about 1/5 inch long; short club-shaped antennae; inconspicuous eyes, and a hard outer shell covering their membranous wings. Immature beetles are about the same length as adults and are covered with dense tufts of hair.