



# NYC Department of Correction at a Glance

Information through first 9 months of FY 2018



Average Daily Population 9,061

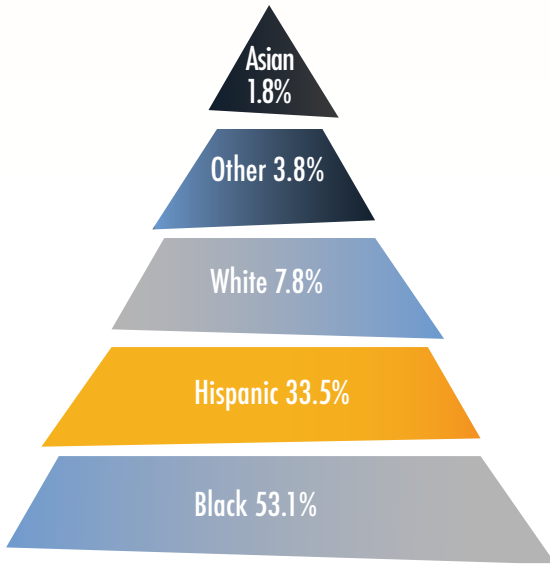
Average Number of Inmates Transported to Court Daily 781

Average Daily Visitors to Rikers Island 956

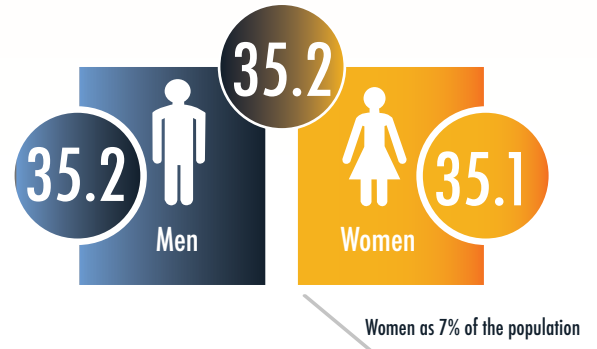
Total admissions 37,991

Total discharges 38,560

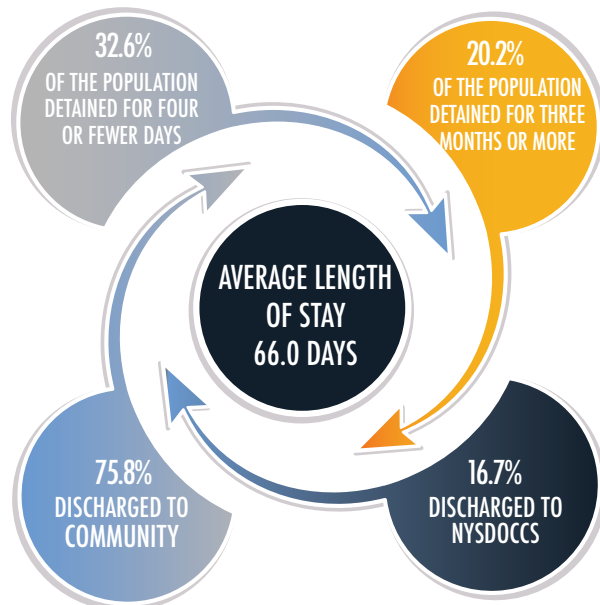
## RACIAL/ETHNIC BREAKDOWN



## AVERAGE AGE OF AN INMATE ADMITTED TO DOC



## AVERAGE LENGTH OF STAY

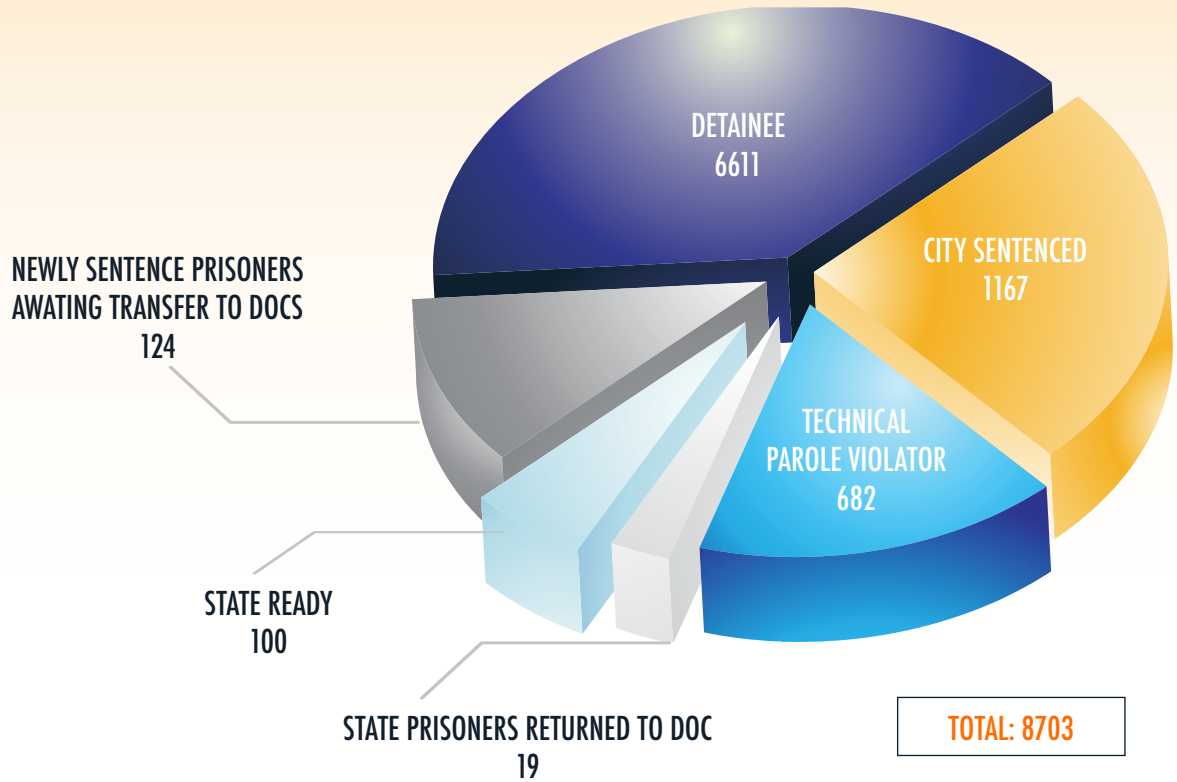




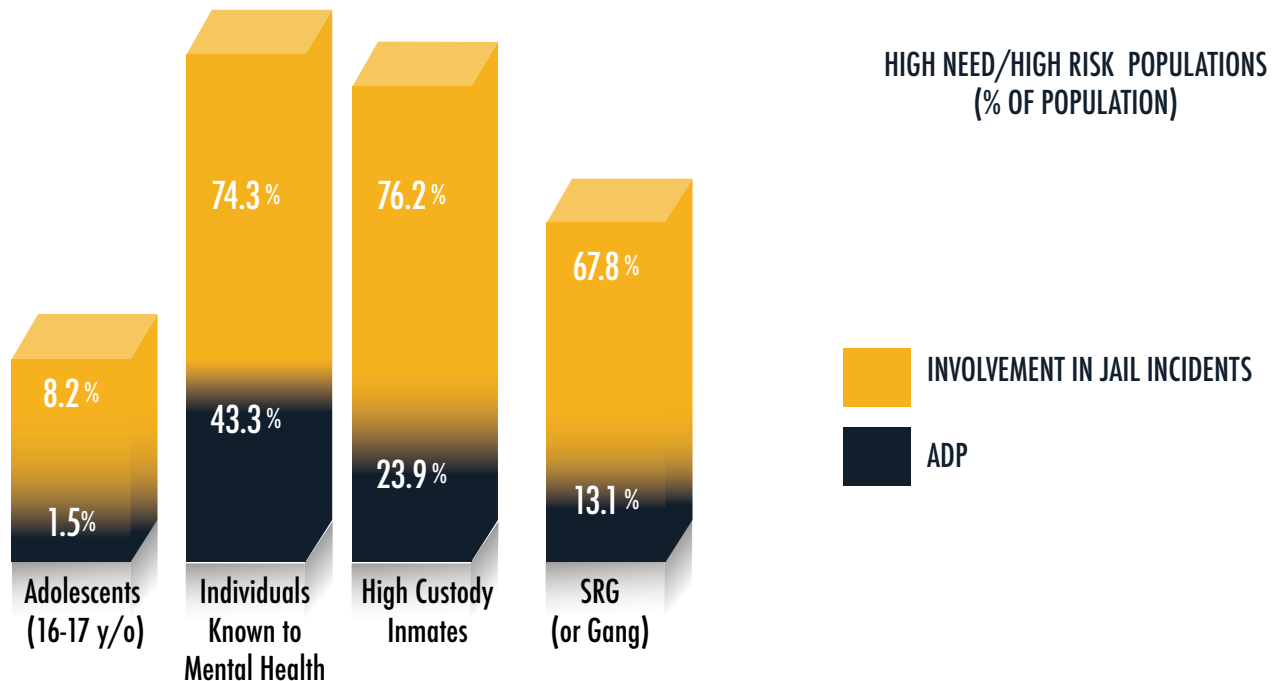
# NYC Department of Correction at a Glance

Information through first 9 months of FY 2018

## NEWLY SENTENCED PRISONERS AWAITING TRANSFER TO NYSDOCCS



## SPECIAL INMATE POPULATION





# NYC Department of Correction at a Glance

Information through first 9 months of FY 2018

## ADP BY TOP ARREST CHARGE BASED ON 1<sup>ST</sup> 9 MONTHS FY18 CROSS-SECTIONS

CHARGE CATEGORY	ADP
ROBBERY	1,056
MURDER/ATT MURDER/MANSLTER	991
WARR/HOLDS	891
OTHER FELONIES	819
ASSAULT	755
BURGLARY	713
DRUG FEL SALE	655
DRUG FEL POSSESS	640
WEAPONS	579
OTHER MISD	443
GRAND LARCENY	340
MISD LARCENY	226
MISD ASSAULT	221
OTHER SEXUAL OFFENSES	204
DRUG MISD	151
VEHICULAR	135
RAPE/ATT RAPE	112
MISD WEAPONS	87
MISSING	42
OTHER	33
VIOLATIONS	8
LOITER/PROSTITU	8