



NYC Department of Correction at a Glance

Information through all 12 months of FY 2017



Average Daily Population 9,500

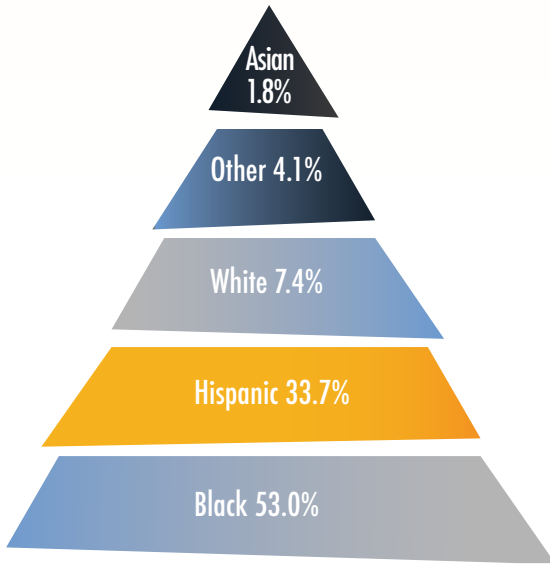
Average Number of Inmates Transported to Court Daily 759

Average Daily Visitors to Rikers Island 1,019

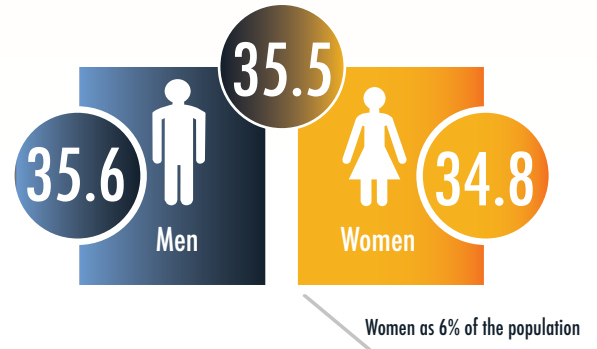
Total admissions 58,226

Total discharges 58,981

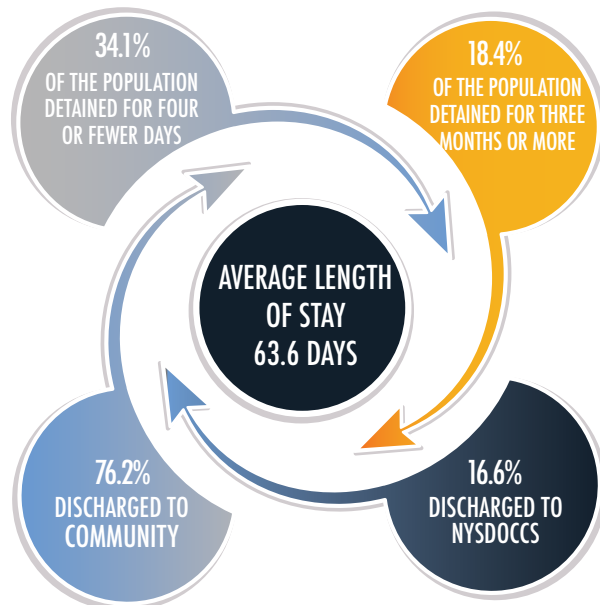
RACIAL/ETHNIC BREAKDOWN



AVERAGE AGE OF AN INMATE ADMITTED TO DOC



AVERAGE LENGTH OF STAY

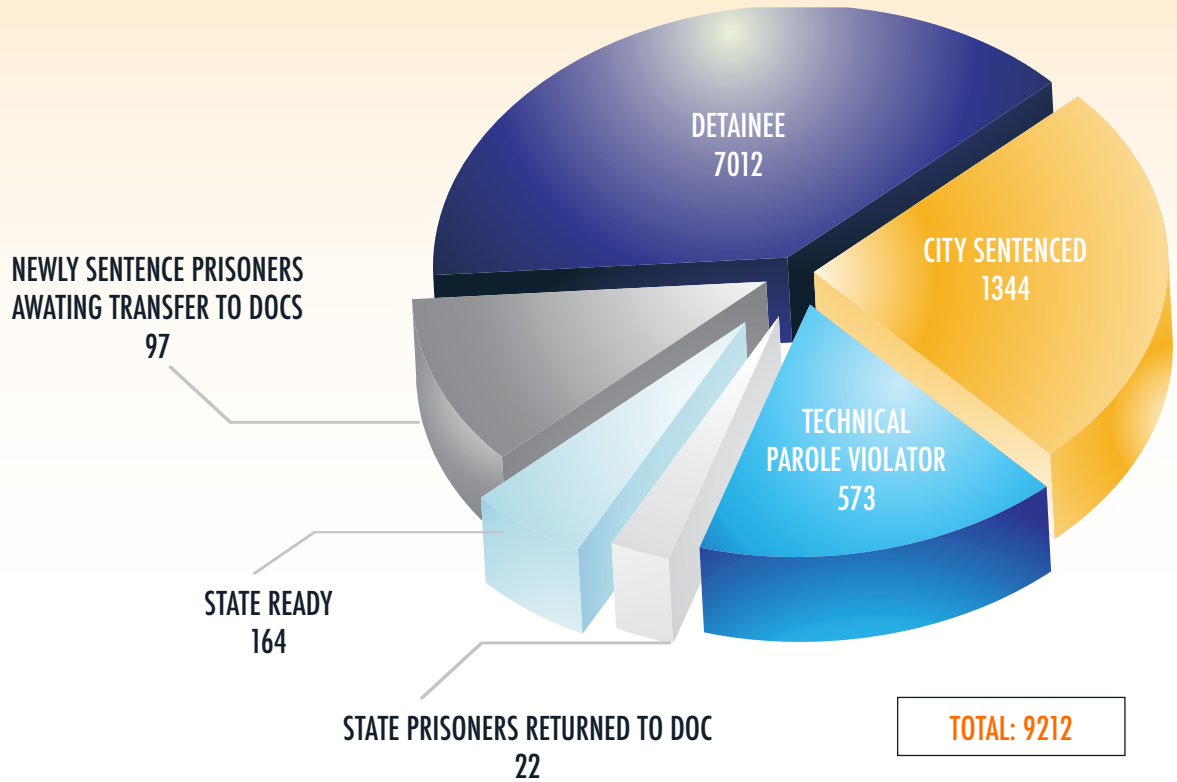




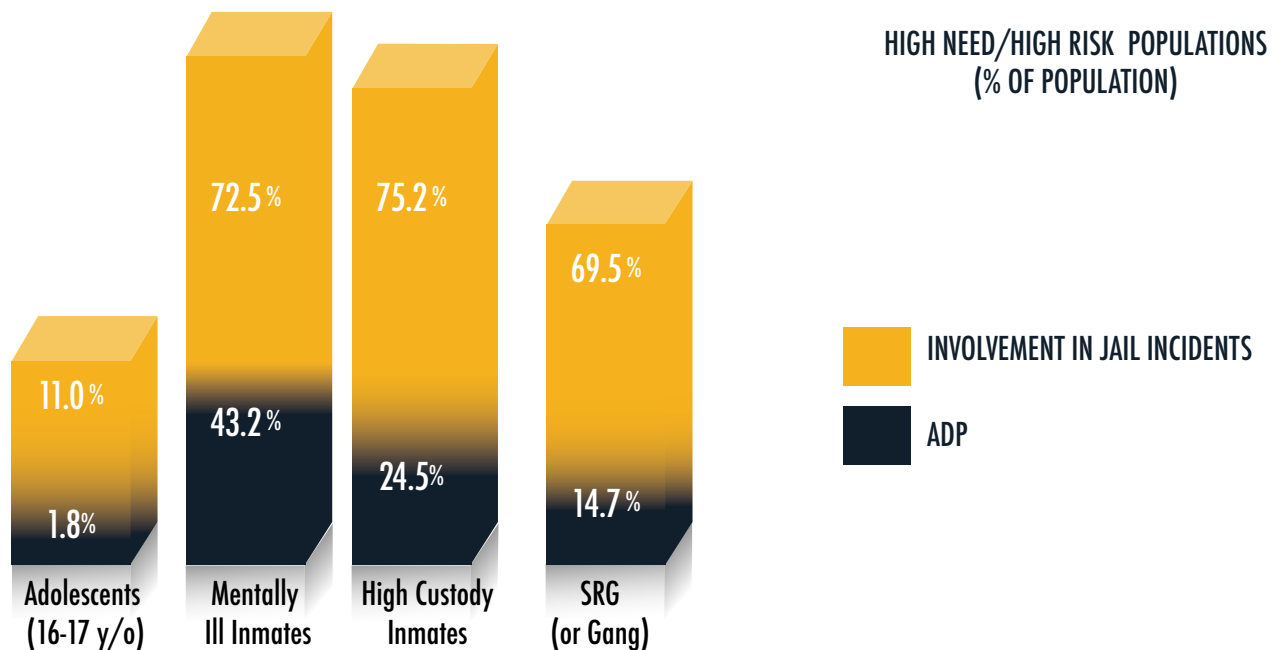
NYC Department of Correction at a Glance

Information through all 12 months of FY 2017

NEWLY SENTENCED PRISONERS AWAITING TRANSFER TO NYSDOCCS



SPECIAL INMATE POPULATION





NYC Department of Correction at a Glance

Information through all 12 months of FY 2017

ADP BY TOP ARREST CHARGE BASED ON 12 MONTHS FY17 CROSS-SECTIONS

| CHARGE CATEGORY | ADP |
|----------------------------|-------|
| ROBBERY | 1,162 |
| MURDER/ATT MURDER/MANSLTER | 1,029 |
| OTHER FELONIES | 882 |
| WARR/HOLDS | 861 |
| ASSAULT | 765 |
| DRUG FEL SALE | 742 |
| DRUG FEL POSSESS | 739 |
| BURGLARY | 700 |
| WEAPONS | 564 |
| OTHER MISD | 469 |
| GRAND LARCENY | 355 |
| MISD LARCENY | 231 |
| MISD ASSAULT | 225 |
| OTHER SEXUAL OFFENSES | 212 |
| DRUG MISD | 181 |
| RAPE/ATT RAPE | 134 |
| VEHICULAR | 141 |
| MISD WEAPONS | 77 |
| OTHER | 31 |
| MISSING | 29 |
| VIOLATIONS | 10 |
| LOITER/PROSTITU | 9 |