

NYC Council Districts Revised Plan

(As of Dec. 4, 2012)



Population Statistics

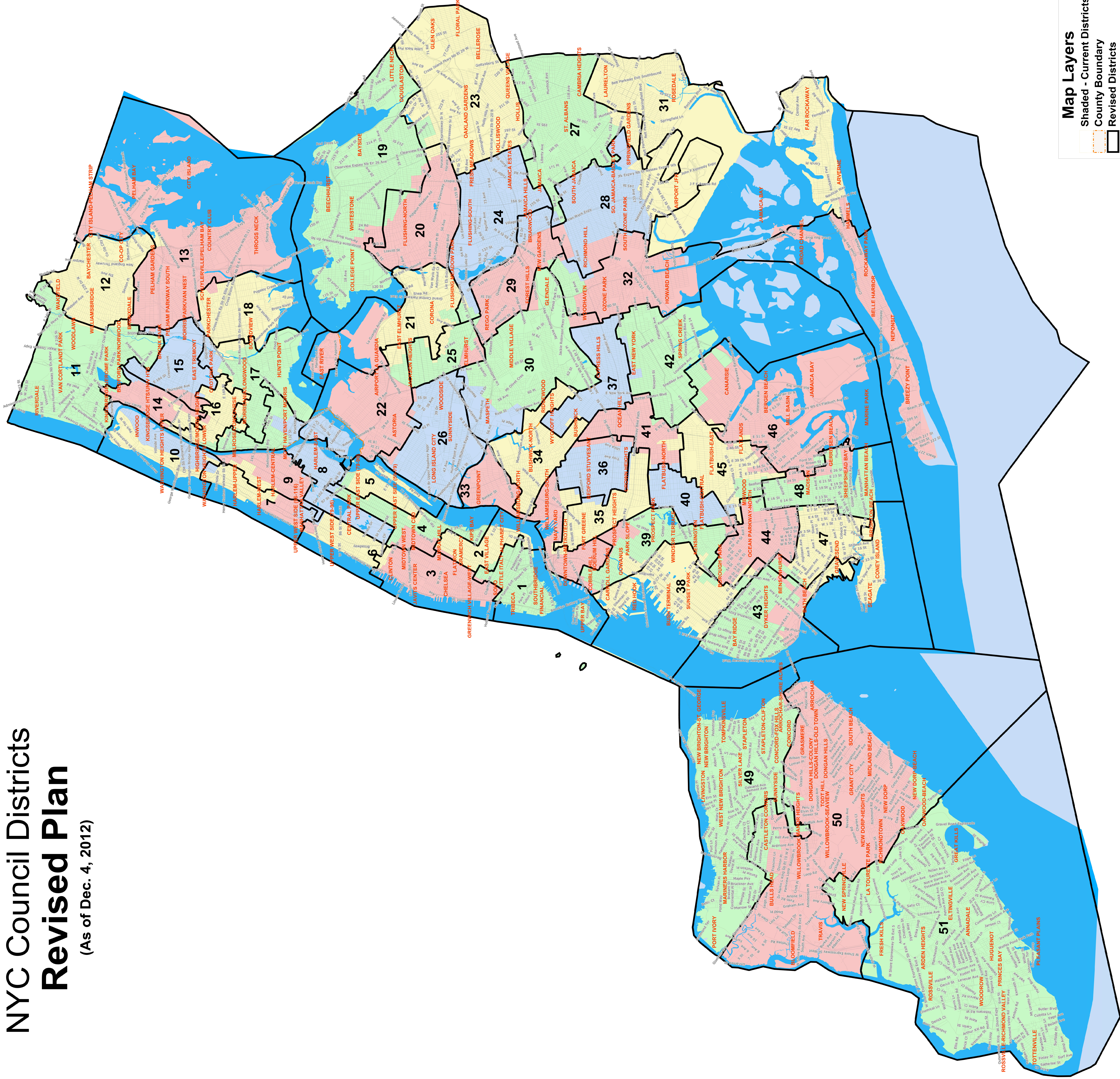
District	Total Population	Deviation	% Deviation
1	168,738	8,028	5.00%
2	168,720	8,010	4.98%
3	168,744	8,034	5.00%
4	168,727	8,017	4.99%
5	168,702	7,992	4.97%
6	168,347	7,637	4.75%
7	160,605	-105	-0.07%
8	168,734	8,024	4.99%
9	164,925	4,215	2.62%
10	166,731	6,021	3.75%

District	Total Population	Deviation	% Deviation
11	165,611	4,901	3.05%
12	166,864	6,154	3.83%
13	163,664	2,954	1.84%
14	168,302	7,592	4.72%
15	168,413	7,703	4.79%
16	155,281	-5,429	-3.38%
17	152,767	-7,943	-4.94%
18	154,175	-6,535	-4.07%

District	Total Population	Deviation	% Deviation
19	154,160	-6,550	-4.08%
20	160,785	75	0.05%
21	153,115	-7,595	-4.73%
22	152,836	-7,874	-4.90%
23	158,691	-2,019	-1.26%
24	158,482	-2,228	-1.39%
25	165,597	4,887	3.04%
26	152,838	-7,872	-4.90%
27	162,700	1,990	1.24%
28	168,598	7,888	4.91%
29	158,382	-2,328	-1.45%
30	154,272	-6,438	-4.01%
31	154,452	-6,258	-3.89%
32	157,085	-3,625	-2.26%

District	Total Population	Deviation	% Deviation
33	161,366	656	0.41%
34	155,959	-4,751	-2.96%
35	152,829	-7,881	-4.90%
36	152,706	-8,004	-4.98%
37	153,151	-7,559	-4.70%
38	168,669	7,959	4.95%
39	168,319	7,609	4.73%
40	152,859	-7,851	-4.89%
41	152,760	-7,950	-4.95%
42	152,722	-7,988	-4.97%
43	168,734	8,024	4.99%
44	160,218	-492	-0.31%
45	154,193	-6,517	-4.06%
46	167,505	6,795	4.23%
47	167,389	6,679	4.16%
48	158,217	-2,493	-1.55%

District	Total Population	Deviation	% Deviation
49	159,569	-1,141	-0.71%
50	155,454	-5,256	-3.27%
51	153,553	-7,157	-4.45%



Map Layers

- Shaded - Current Districts
- County Boundary
- Revised Districts