

# Mitchell Giurgola

DASNY (No. 371410)  
Staten Island Family Court Complex  
Bridging Consultant Services

PDC Conceptual Presentation  
18 August 2025



# Staten Island Family Court Complex

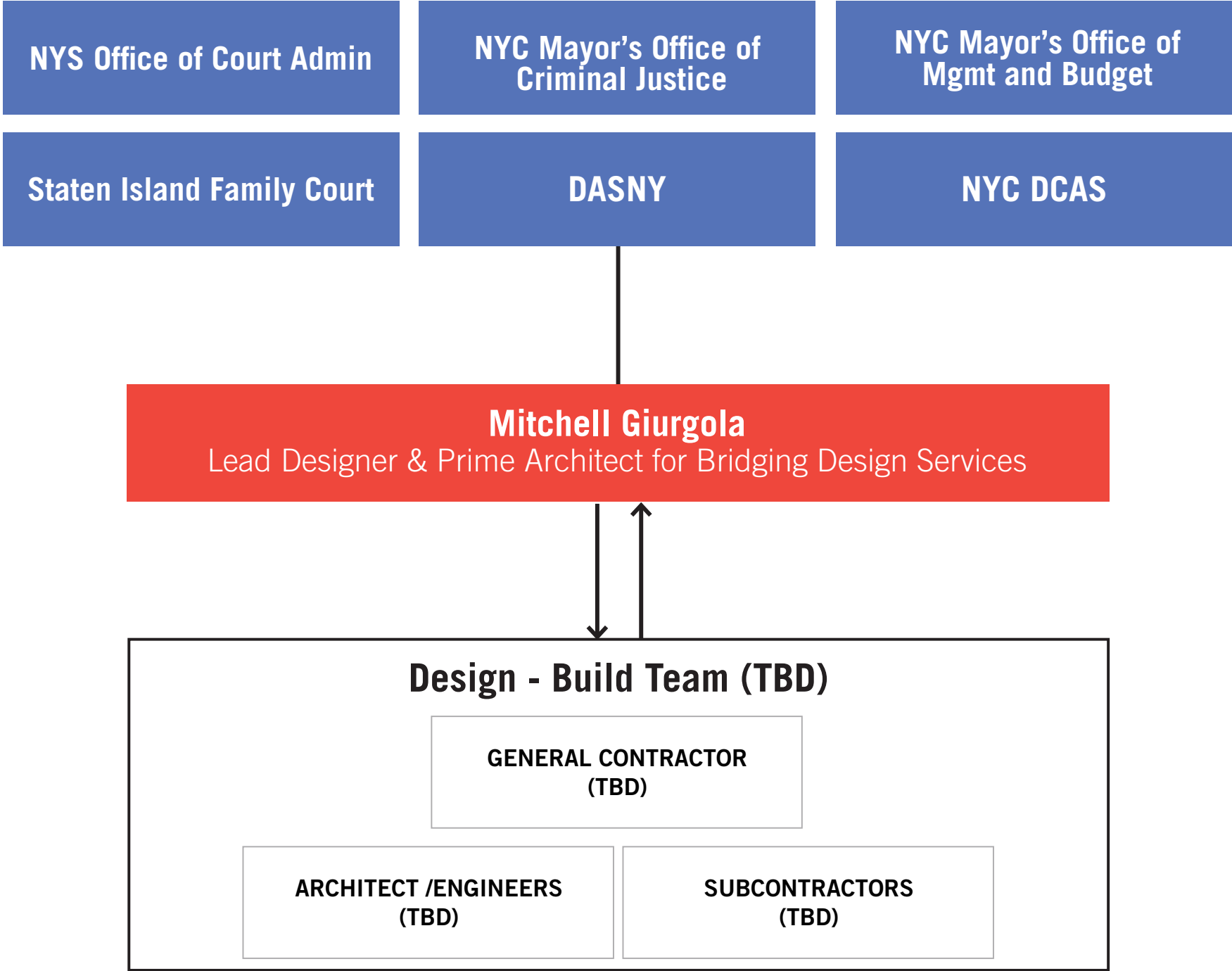
## Project Goals

- Consolidate currently fragmented Court operations and provide enhanced services to Court users and the community
- Planning for 2035 program needs by providing a modern facility with program spaces complying with OCA standards
- Improve security, circulation, and operations for Court and City agency spaces
- Upgrade the existing historic building at 100 Richmond Terrace



# Staten Island Family Court Complex

## Project Team



# Staten Island Family Court Complex

## Project Site



**10 Hamilton Avenue**  
Family Court

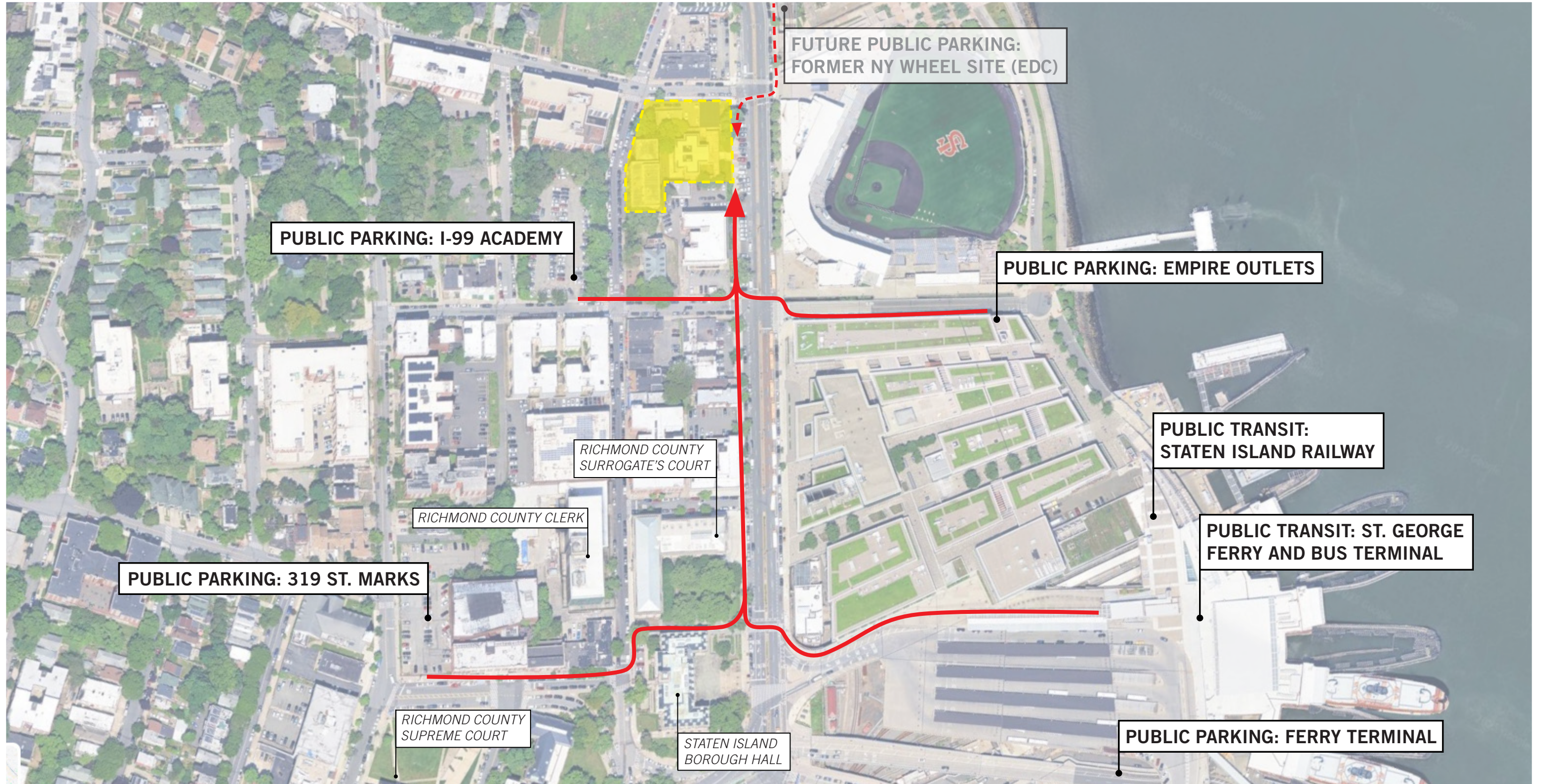
**100 Richmond Terrace**  
Family Court

**55 Stuyvesant Place**  
Former NYC Dept. of Health

**Richmond Terrace Civic Corridor**

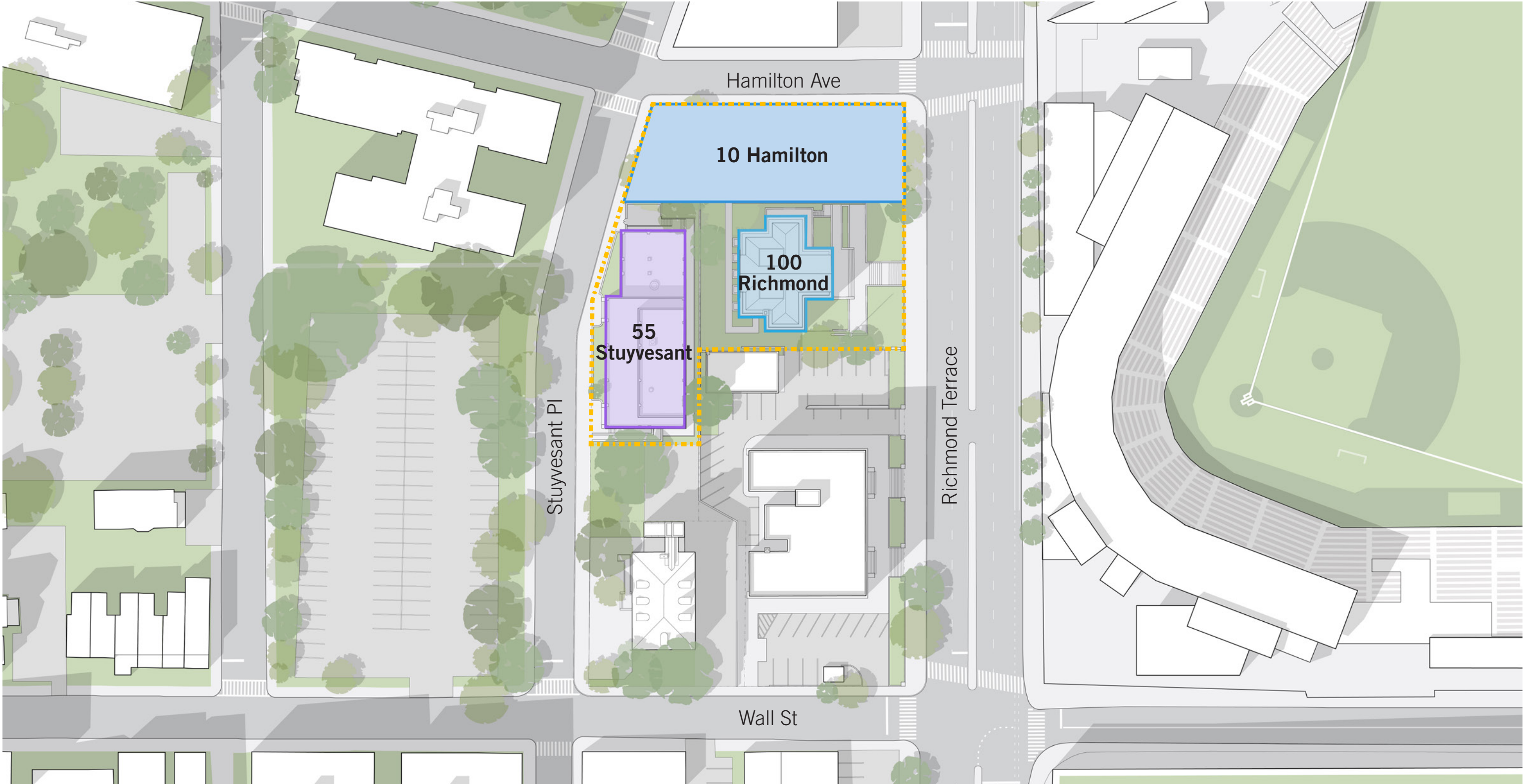
# Staten Island Family Court Complex

## Project Site Circulation



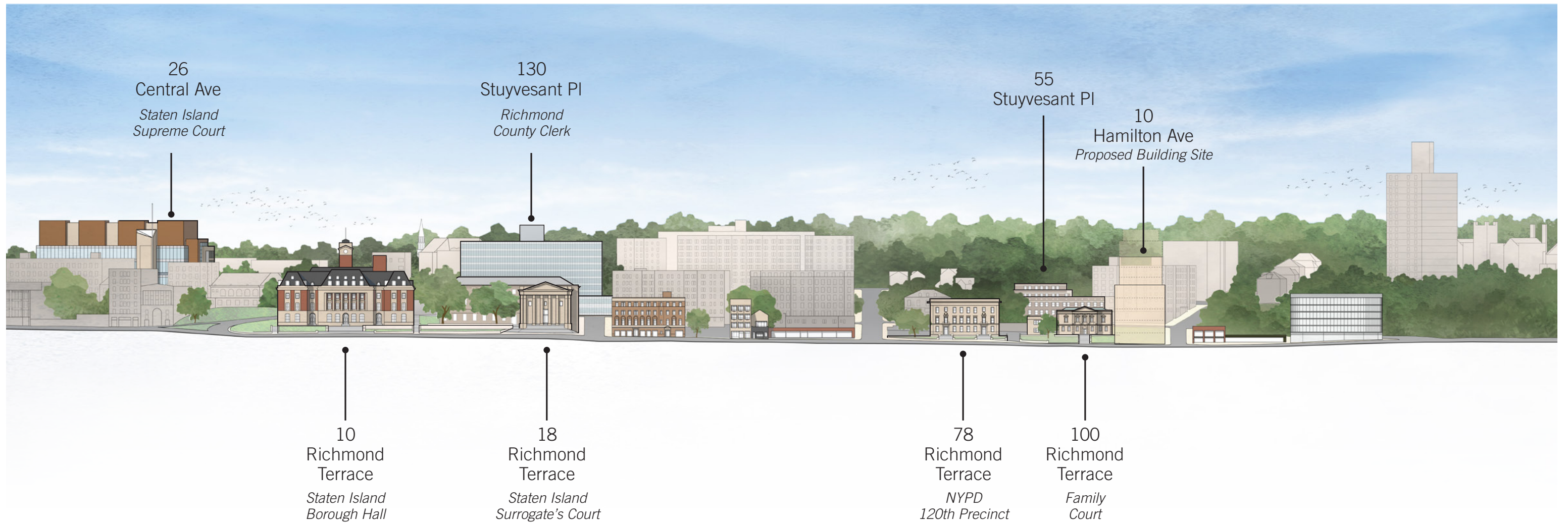
# Staten Island Family Court Complex

## Site Context



# Staten Island Family Court Complex

## Richmond Terrace Elevation



# Staten Island Family Court Complex

## Family Court Elevation

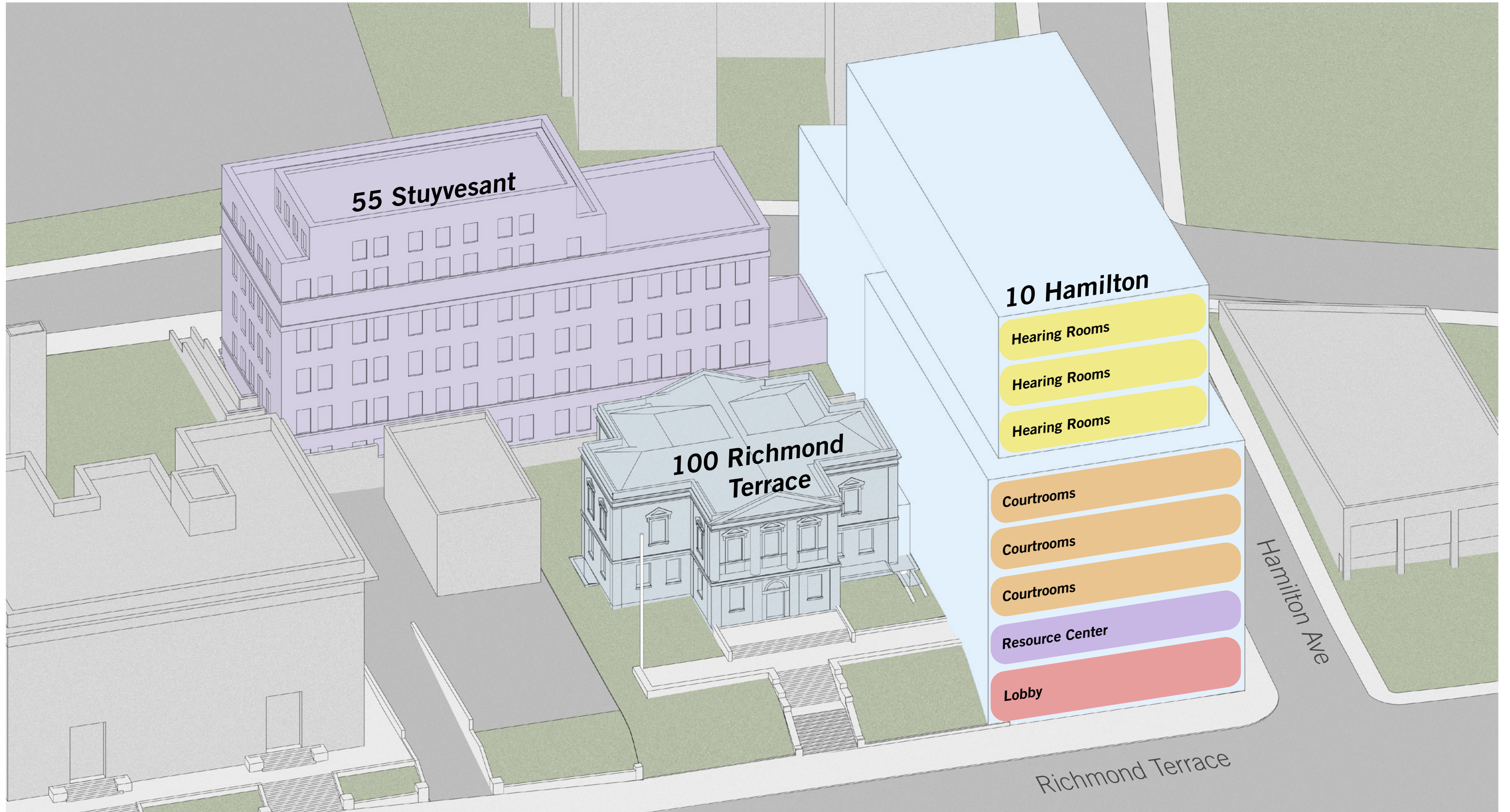


78 Richmond Terrace  
NYPD  
120th Precinct

100 Richmond  
Terrace  
Family Court

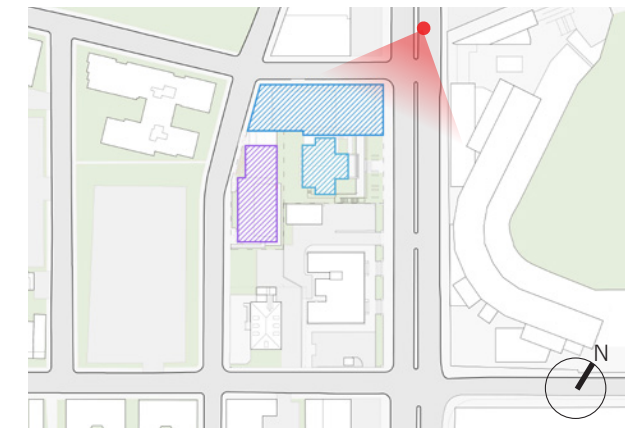
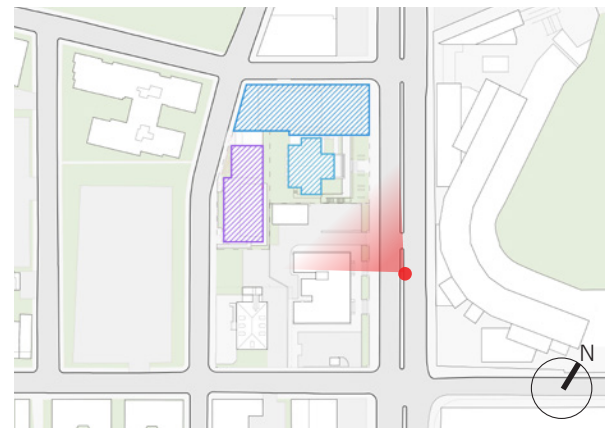
# Staten Island Family Court Complex

## Proposed Massing Diagram



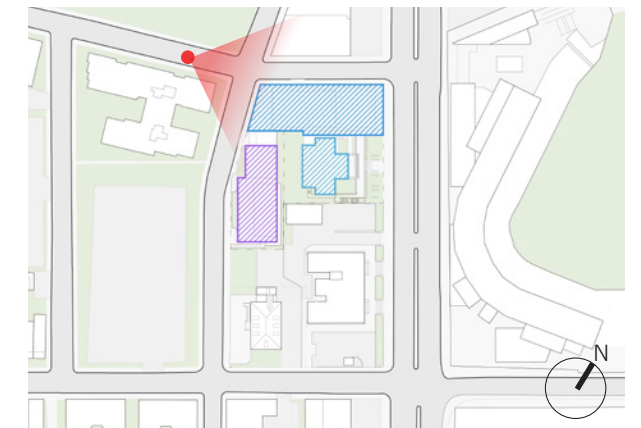
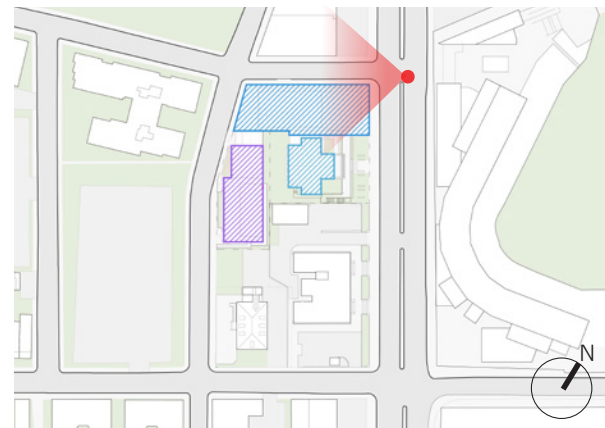
# Site Photographs

## Richmond Terrace



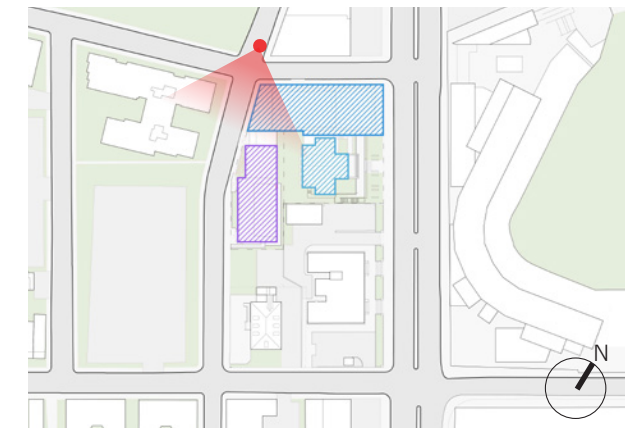
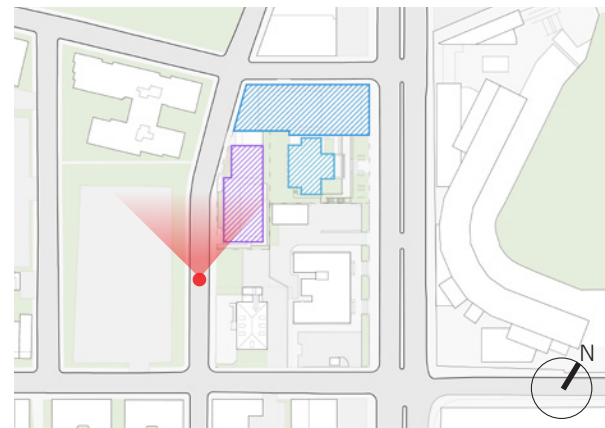
# Site Photographs

## Hamilton Avenue

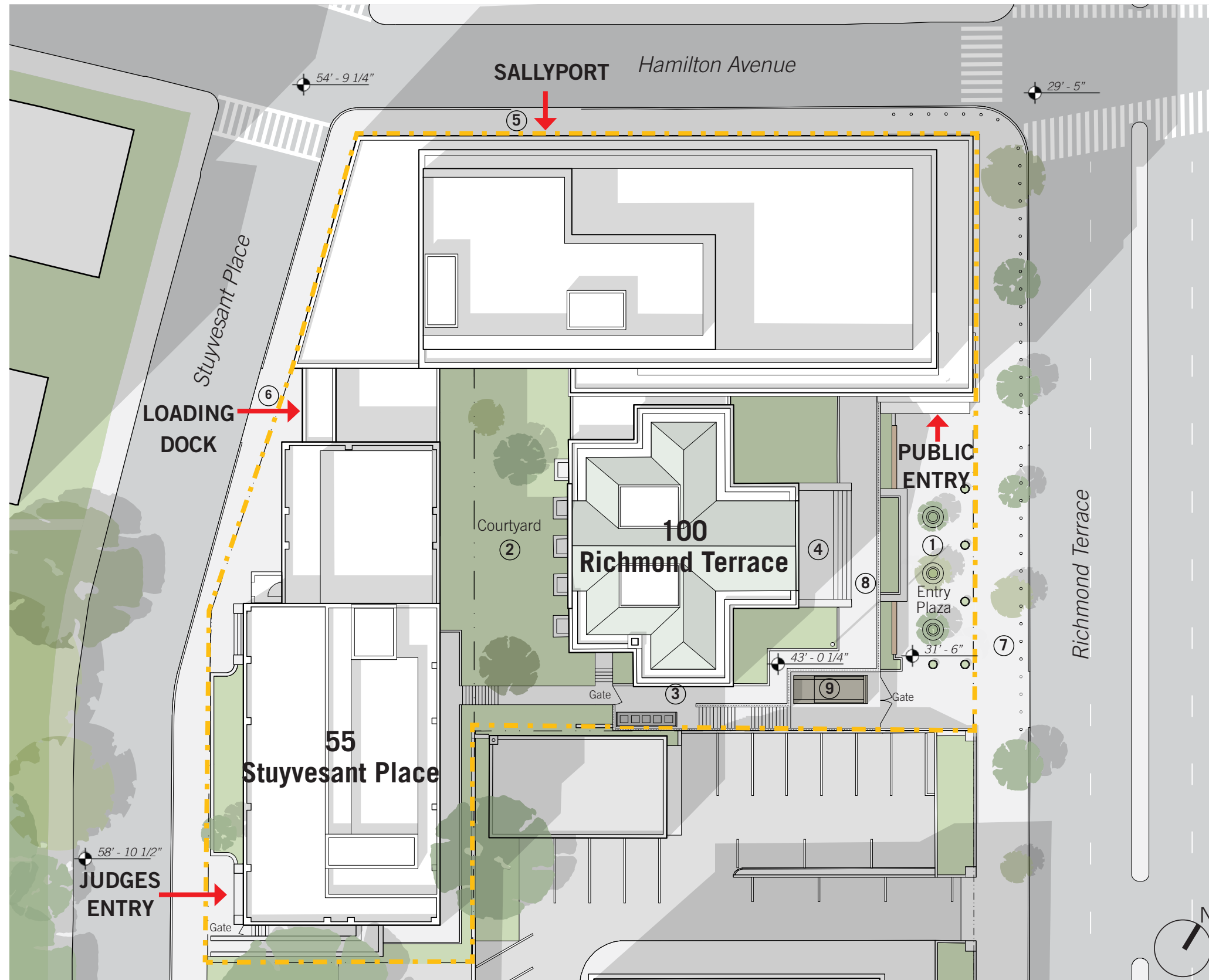


# Site Photographs

## Stuyvesant Place



# Site Plan



## Proposed Scope Notes

- ① Remove existing stair and berm at the historic courthouse to provide a new public plaza and entrance to the new Family Courthouse, with stone pavers, benches, low planter and trees.
- ② Regrade existing open space to create a secure courtyard with new landscaping.
- ③ New sidewalk from egress door to new exterior egress stair, connecting to lower entry plaza at grade.
- ④ Restore steps and paving at historic courthouse.
- ⑤ New sidewalk and curb cut for proposed Sallyport.
- ⑥ New sidewalk and curb cut for proposed Loading Dock.
- ⑦ New street trees as required by zoning and perimeter bollards.
- ⑧ New fencing and gates to maintain secure perimeter.
- ⑨ New curb cut and recessed bay with gate for Trash Compactor.

# Public Entry Studies

## Comparison

No Plaza  
Stair and Berm



- New Family Courthouse entrance and lobby is in 10 Hamilton.
- Historic courthouse stairs and yard must be fenced off to maintain secure perimeter and prevent public trying to approach the former main entrance.

Small Plaza  
Stair and Partial Berm



- Berm is partially excavated to create small public plaza and entry to the building along Richmond Terrace.
- Historic courthouse stairs and yard remain inaccessible.
- Historic grand stair adjacent to the small new entry plaza creates confusion as to which is the primary entrance.

Large Plaza  
Remove Stair and Berm

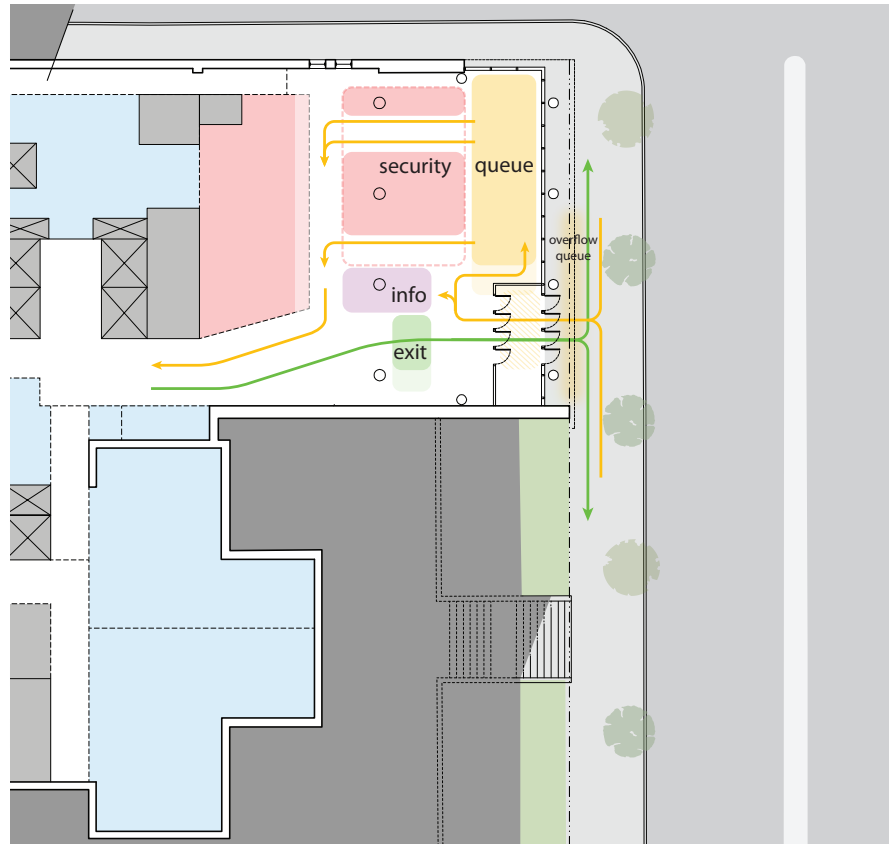


- Stair and berm are removed to create open and welcoming public plaza for the court and community.
- Public entrance is clearly visible and entrance plaza is proportionate to the size of the courthouse and lobby.
- Retaining wall provides a secure perimeter while not obstructing views of the historic courthouse.

# Public Entry Studies

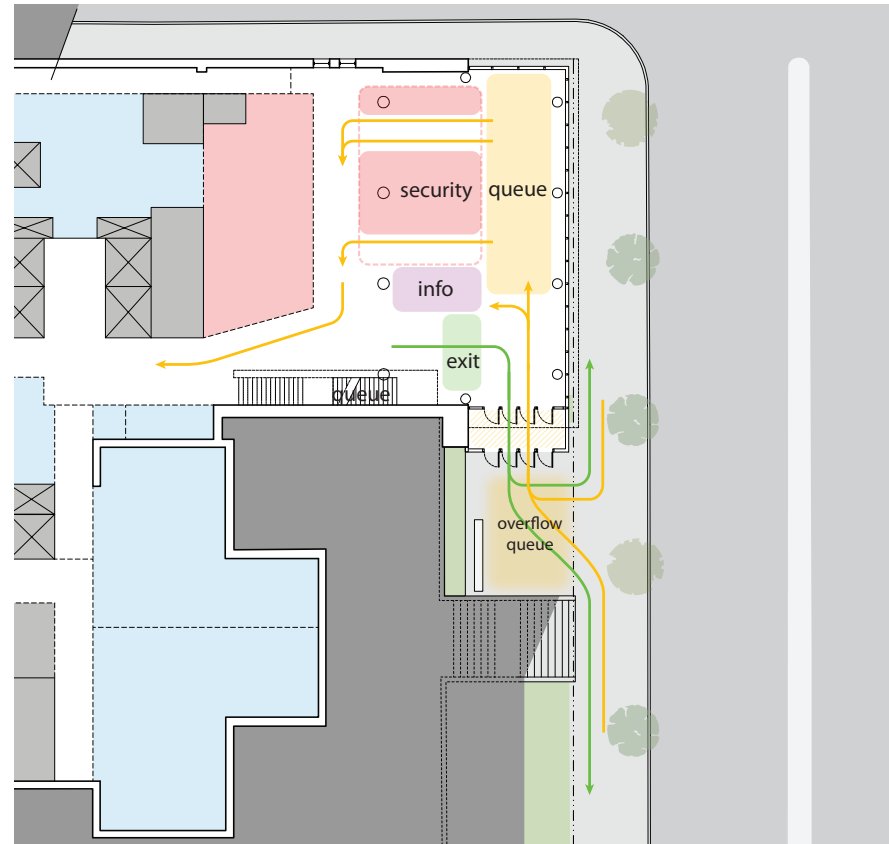
## Comparison

No Plaza  
Stair and Berm



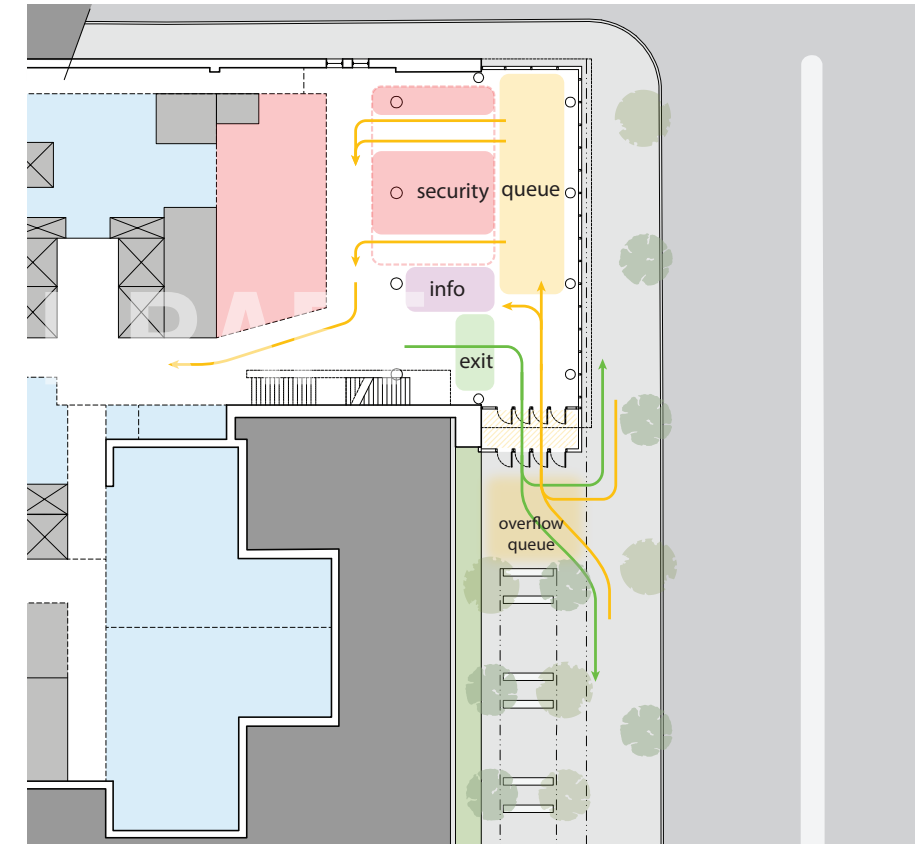
- New Family Courthouse entrance and lobby is in 10 Hamilton.
- Historic courthouse stairs and yard must be fenced off to maintain secure perimeter and prevent public trying to approach the former main entrance.

Small Plaza  
Stair and Partial Berm



- Berm is partially excavated to create small public plaza and entry to the building along Richmond Terrace.
- Historic courthouse stairs and yard remain inaccessible.
- Historic grand stair adjacent to the small new entry plaza creates confusion as to which is the primary entrance.

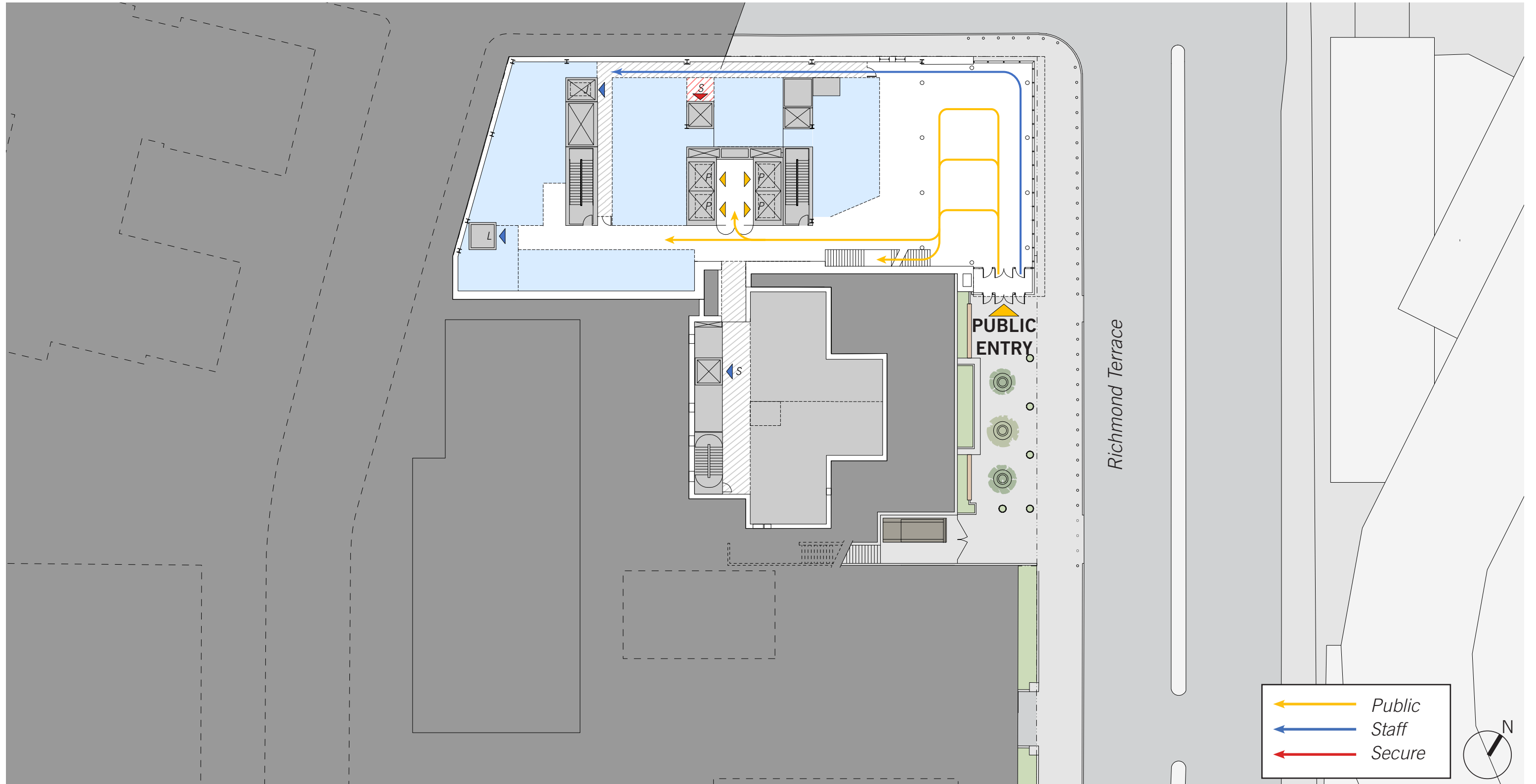
Large Plaza  
Remove Stair and Berm



- Stair and berm are removed to create open and welcoming public plaza for the court and community.
- Public entrance is clearly visible and entrance plaza is proportionate to the size of the courthouse and lobby.
- Retaining wall provides a secure perimeter while not obstructing views of the historic courthouse.

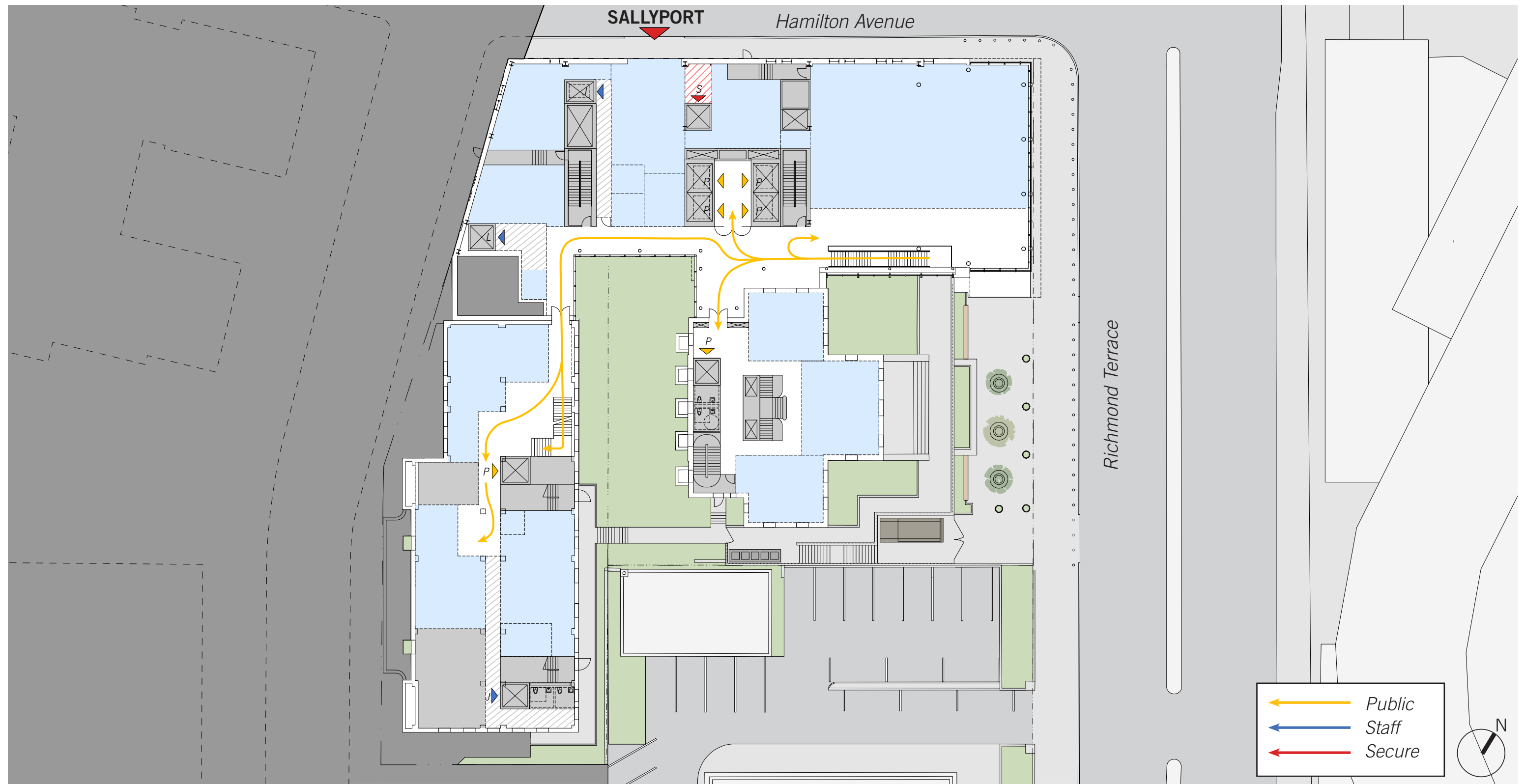
# Ground Floor Plan

## Circulation Diagram



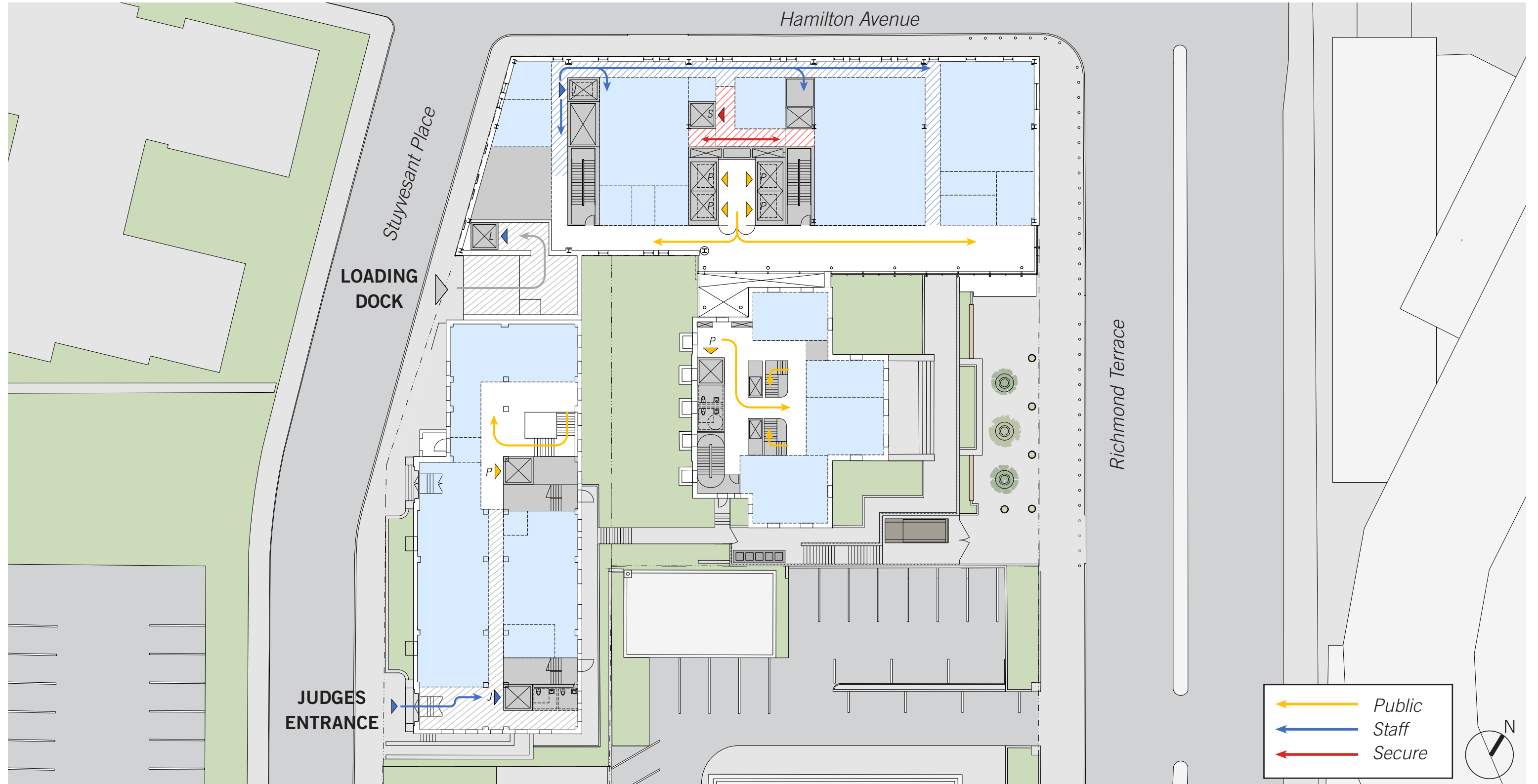
# Floor 1 Plan

## Circulation Diagram



# Floor 2 Plan

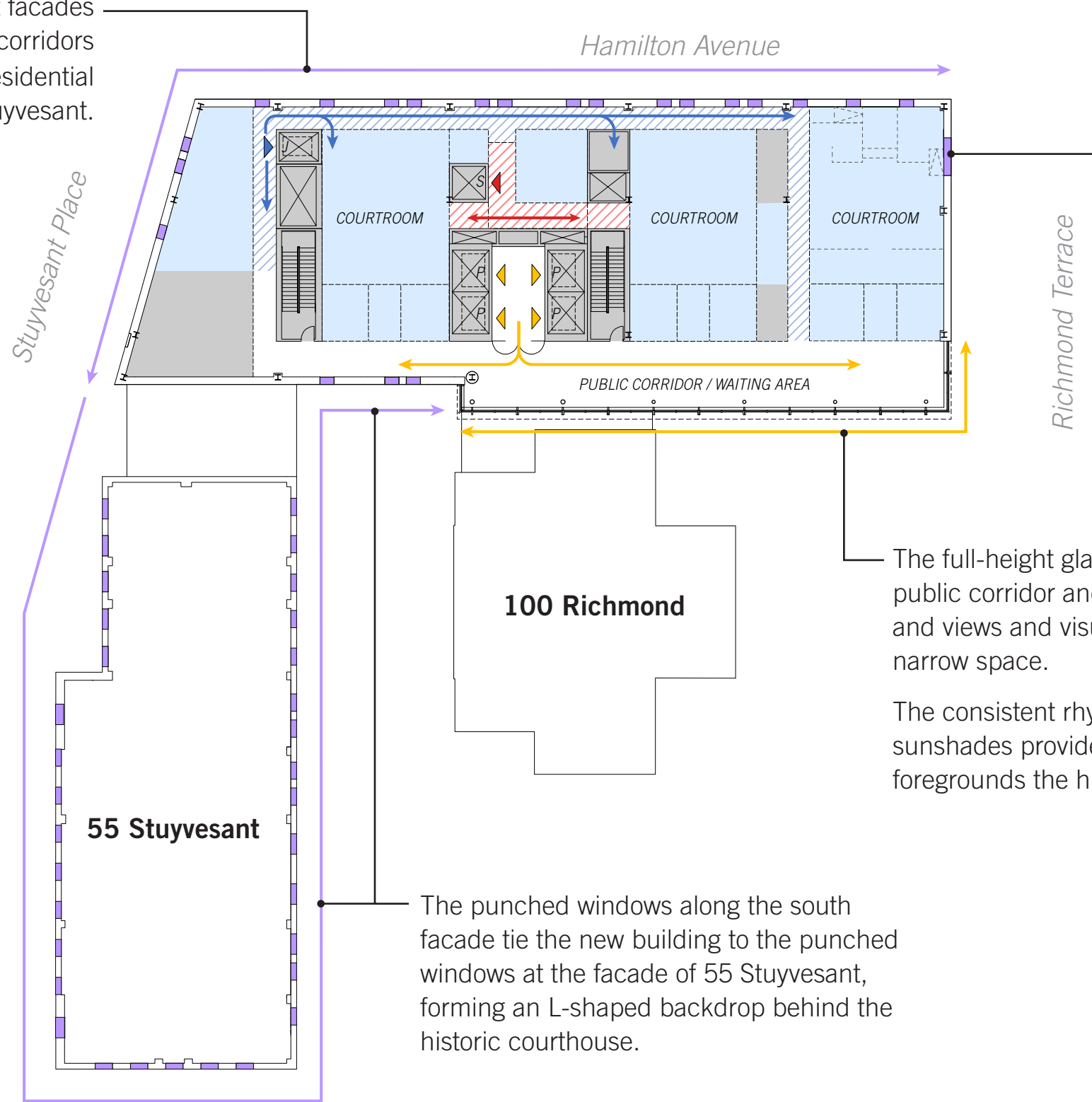
## Circulation Diagram



# Floor Plan

## Typical Courtroom Floor

Punched windows on the north and west facades reduce visibility into Court staff-only corridors and relate to the scale of the neighboring residential buildings and the punched windows at 55 Stuyvesant.



The large square window is positioned beyond the Courtroom well and spectator gallery as per OCA direction (OCA prefers no windows within courtrooms).

The stack of windows creates a graphic pattern on the east facade and transitions to the sequence of punched windows along the north and west facades.

The full-height glazed curtain wall along the public corridor and waiting area maximizes light and views and visually expands the long and narrow space.

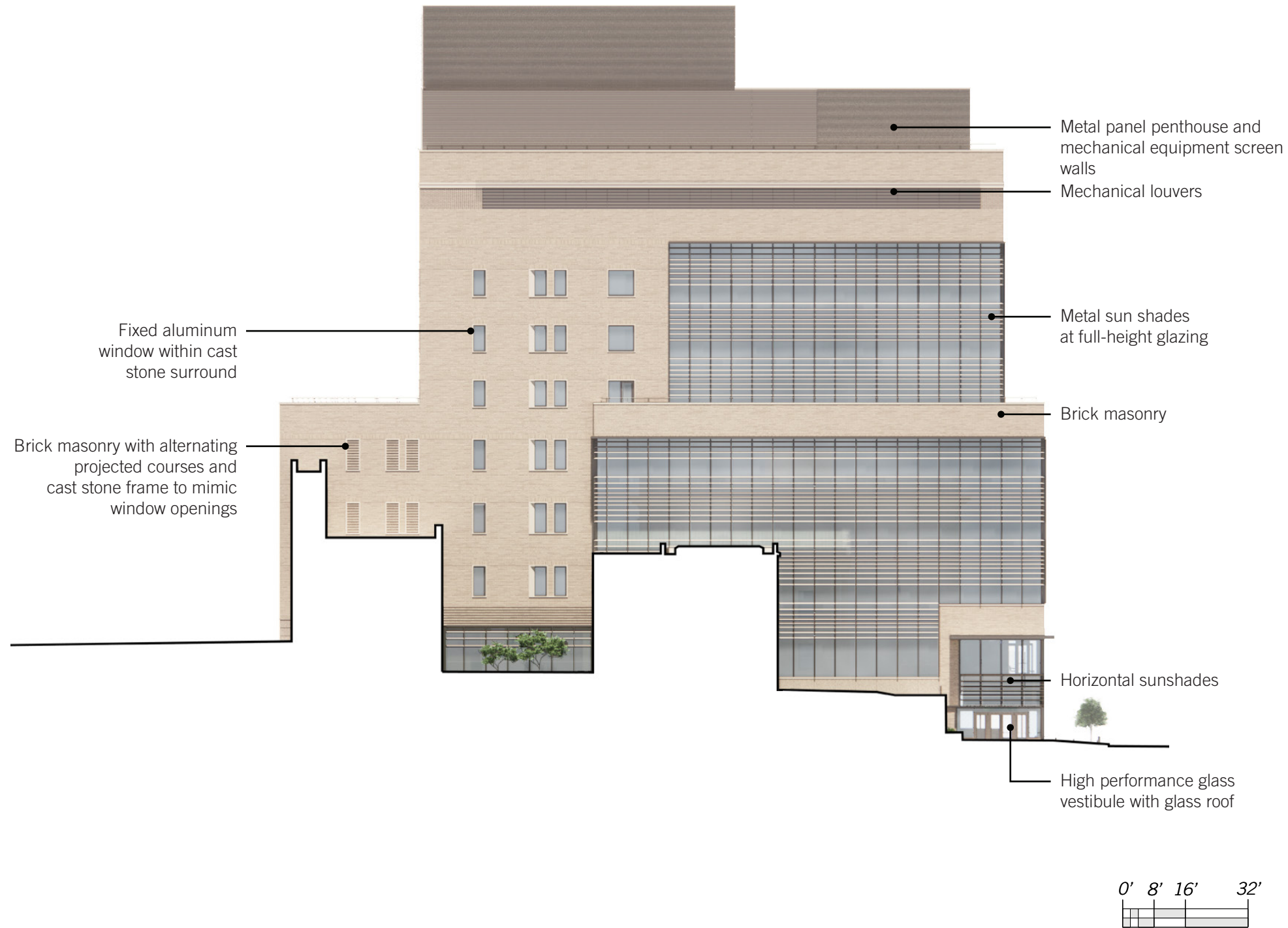
The consistent rhythm of the curtain wall sunshades provides a uniform backdrop that foregrounds the historic courthouse.

The punched windows along the south facade tie the new building to the punched windows at the facade of 55 Stuyvesant, forming an L-shaped backdrop behind the historic courthouse.



# Elevations

## South Facade



### General Notes

(Special notes are provided on drawing)

#### 100 Richmond Terrace

- Restore existing terracotta facade
- New high performance sash windows with applied muntins to match historic profiles.

#### 10 Hamilton Avenue

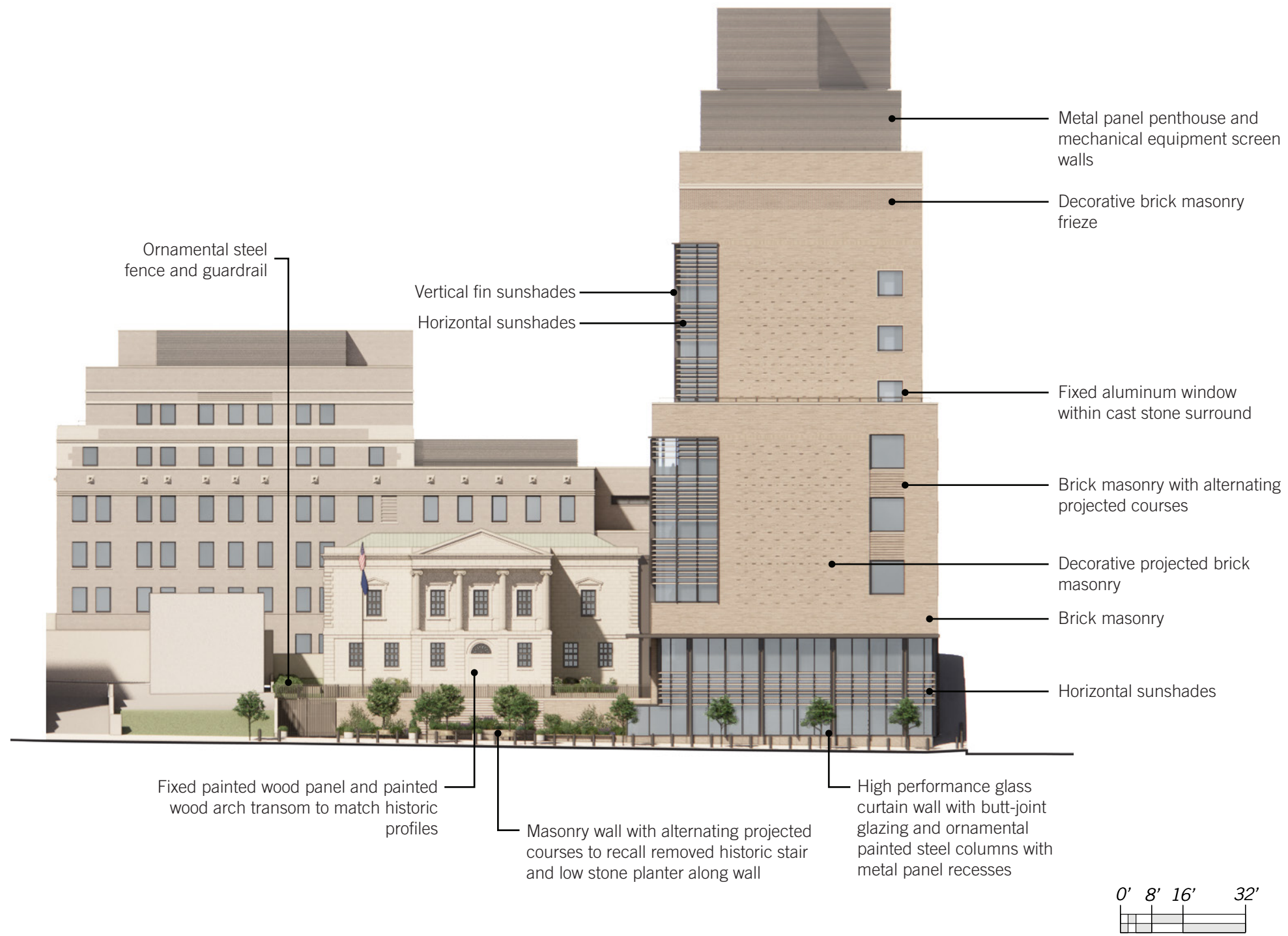
- Refer to elevation notes.

#### 55 Stuyvesant Place

- Repair, repoint, and restore existing brick masonry, stone, and coping.
- New high performance fixed casement windows with applied muntins to match historic profiles.
- New custom exterior doors with high performance IGUs and decorative grille to match historic profiles.

# Elevations

## East Facade



### General Notes

(Special notes are provided on drawing)

#### 100 Richmond Terrace

- Restore existing terracotta facade
- New high performance sash windows with applied muntins to match historic profiles.

#### 10 Hamilton Avenue

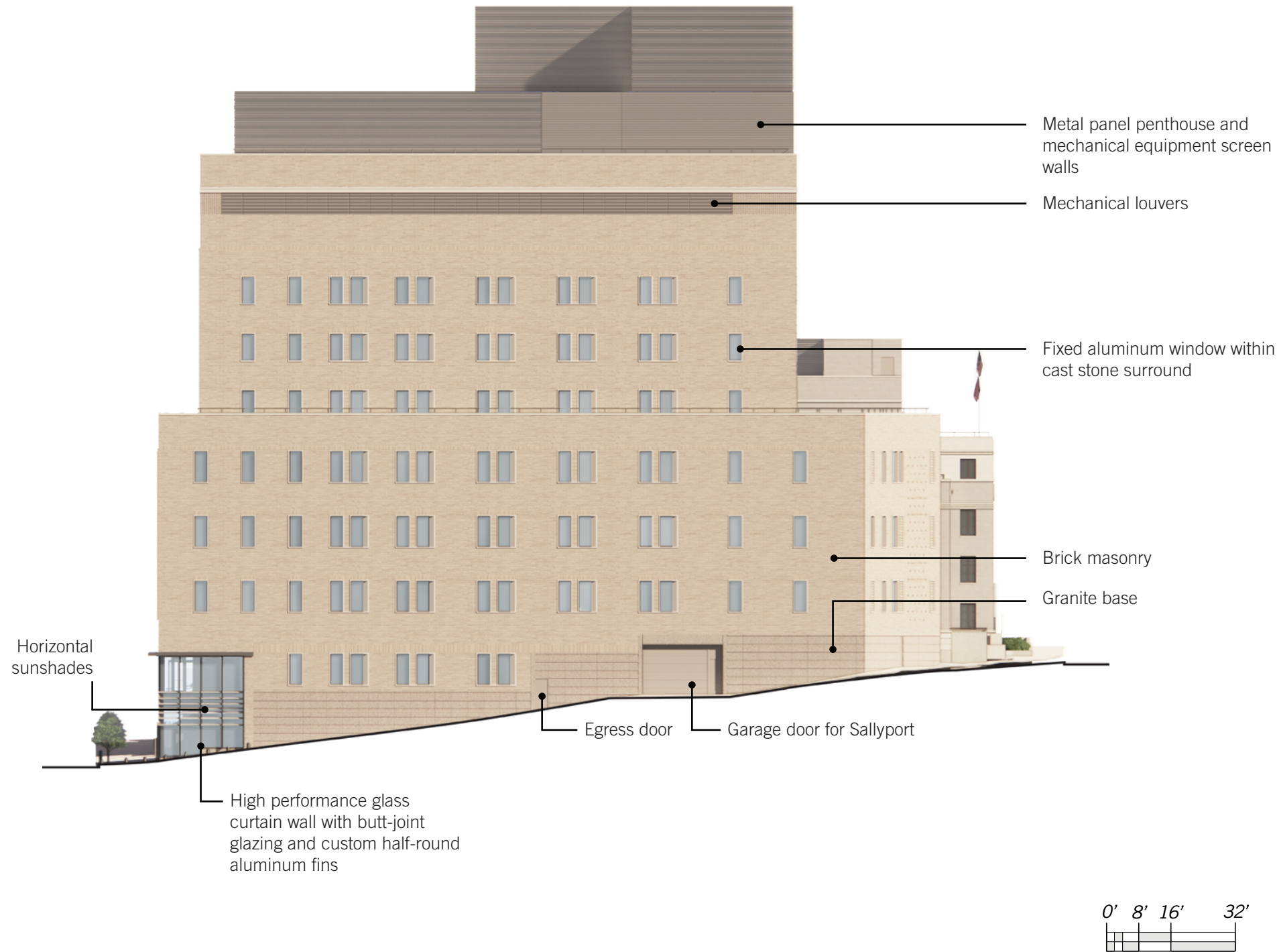
- Refer to elevation notes.

#### 55 Stuyvesant Place

- Repair, repoint, and restore existing brick masonry, stone, and coping.
- New high performance fixed casement windows with applied muntins to match historic profiles.
- New custom exterior doors with high performance IGUs and decorative grille to match historic profiles.

# Elevations

## North Facade



### General Notes

(Special notes are provided on drawing)

#### 100 Richmond Terrace

- Restore existing terracotta facade
- New high performance sash windows with applied muntins to match historic profiles.

#### 10 Hamilton Avenue

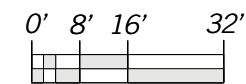
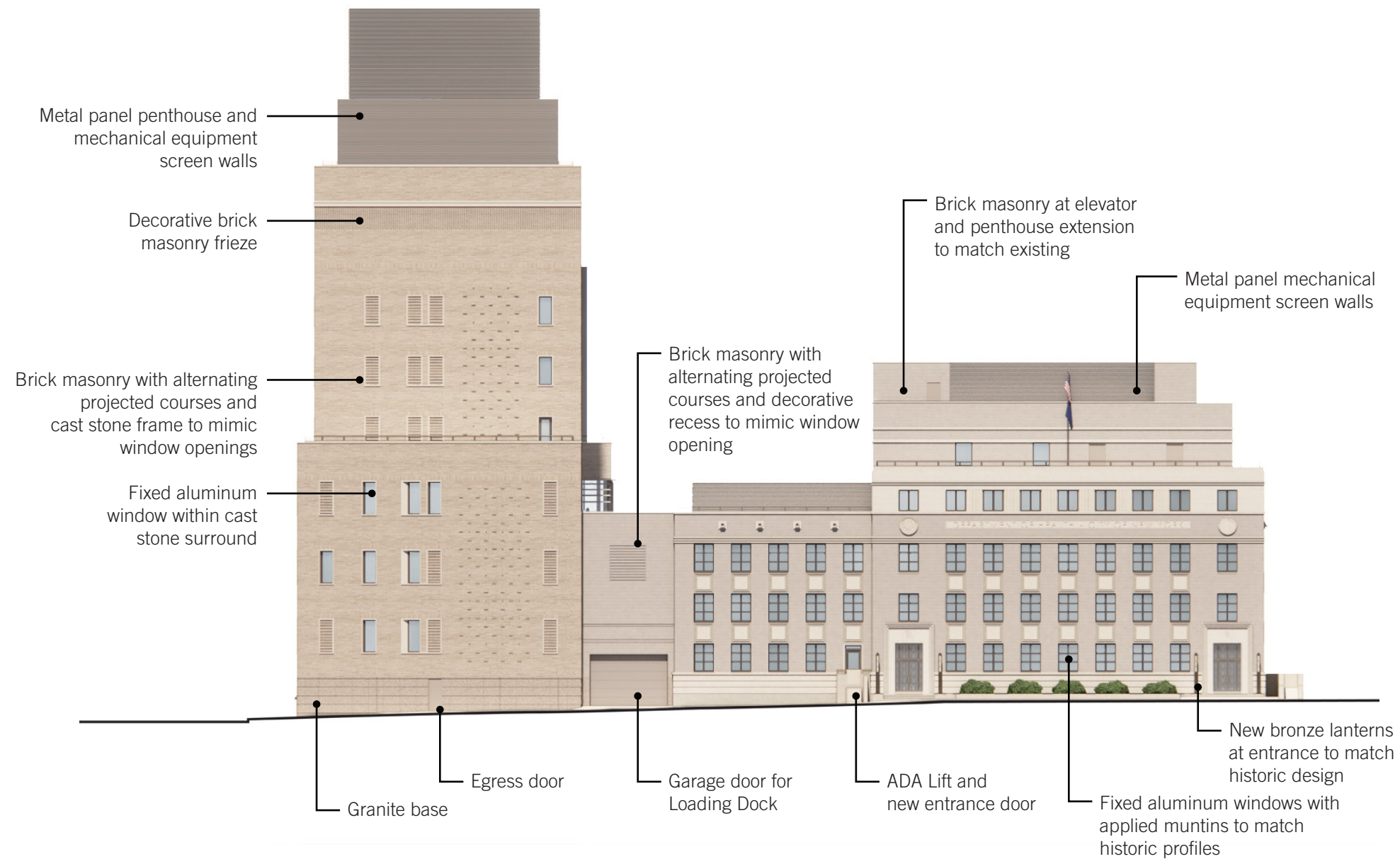
- Refer to elevation notes.

#### 55 Stuyvesant Place

- Repair, repoint, and restore existing brick masonry, stone, and coping.
- New high performance fixed casement windows with applied muntins to match historic profiles.
- New custom exterior doors with high performance IGUs and decorative grille to match historic profiles.

# Elevations

## West Facade



### General Notes

(Special notes are provided on drawing)

#### 100 Richmond Terrace

- Restore existing terracotta facade
- New high performance sash windows with applied muntins to match historic profiles.

#### 10 Hamilton Avenue

- Refer to elevation notes.

#### 55 Stuyvesant Place

- Repair, repoint, and restore existing brick masonry, stone, and coping.
- New high performance fixed casement windows with applied muntins to match historic profiles.
- New custom exterior doors with high performance IGUs and decorative grille to match historic profiles.

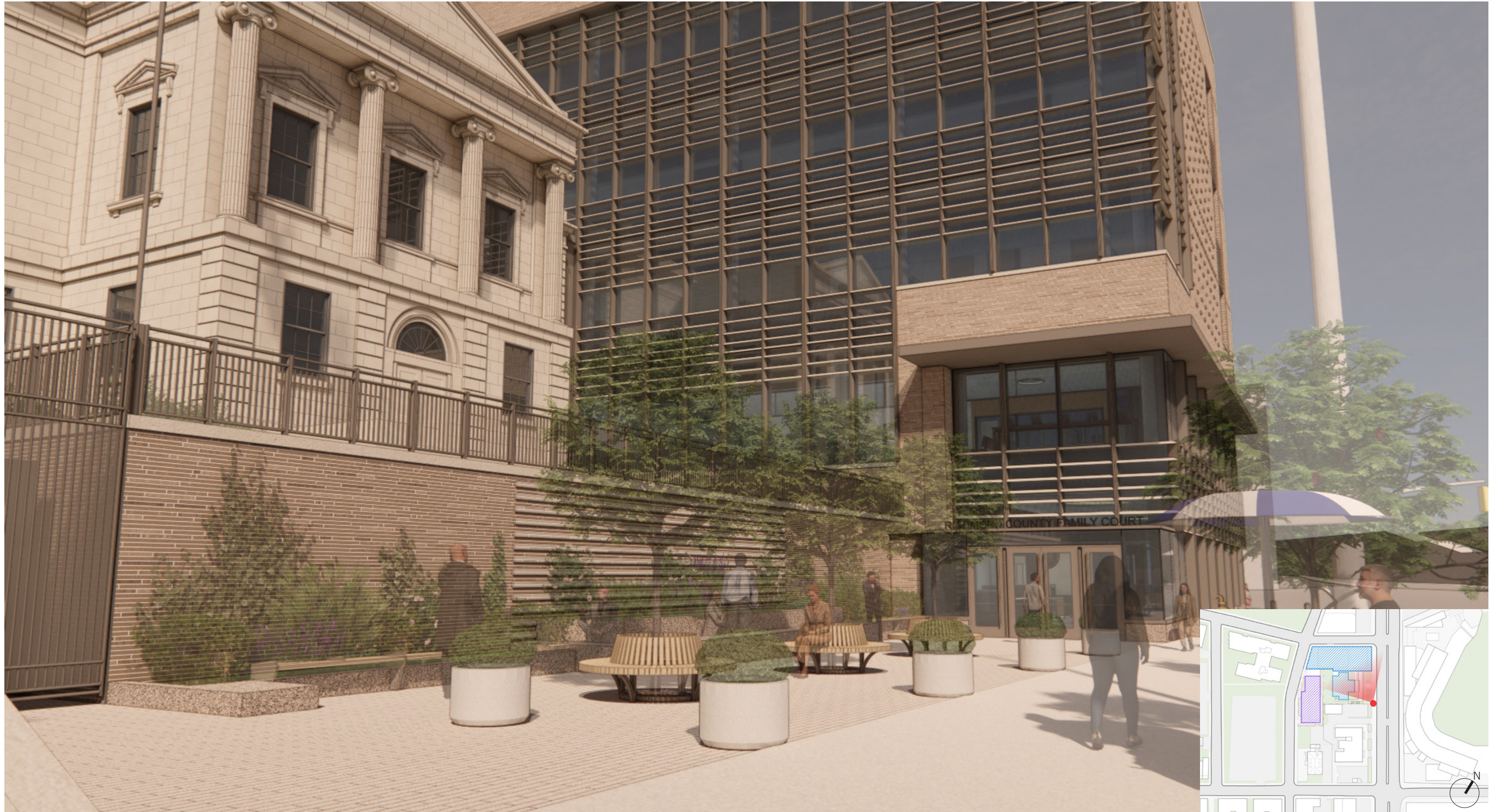
# Exterior



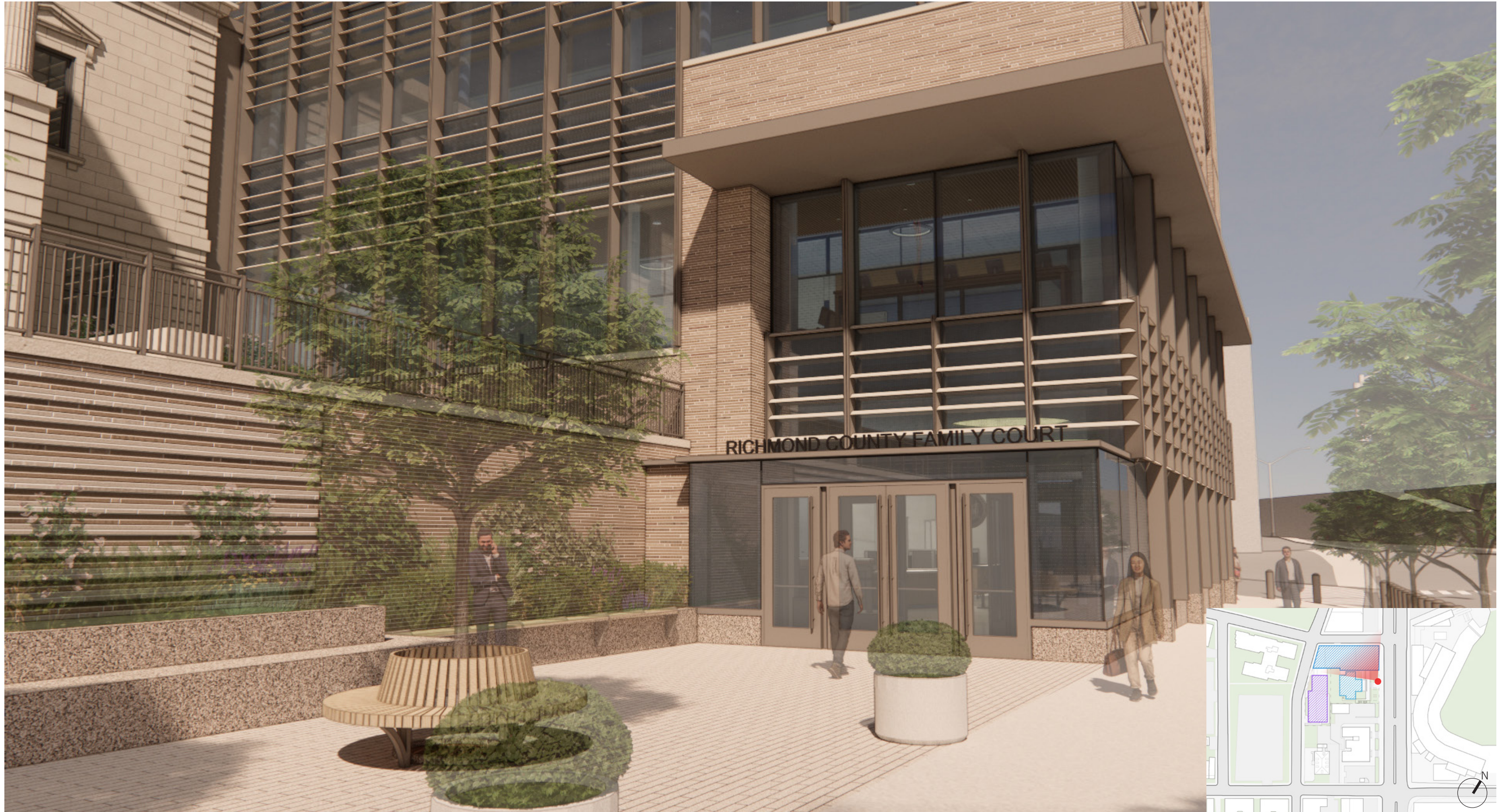
# Exterior



# Exterior



# Exterior



# Exterior



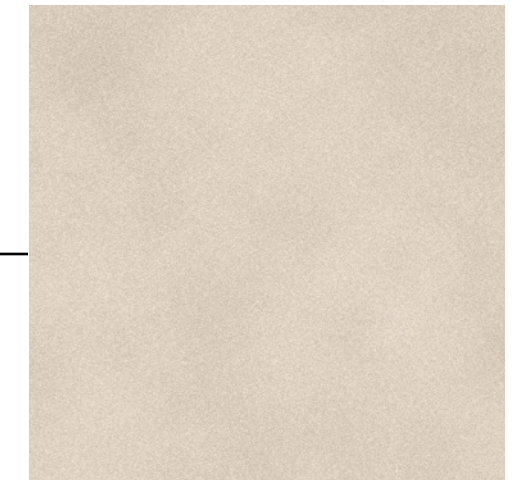
# Exterior



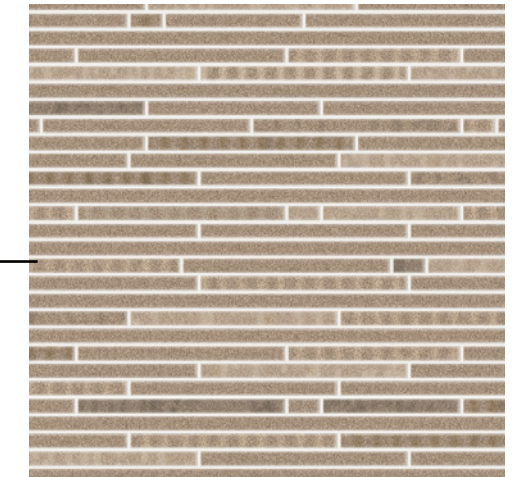
# Exterior



# Material Images



Cast Stone

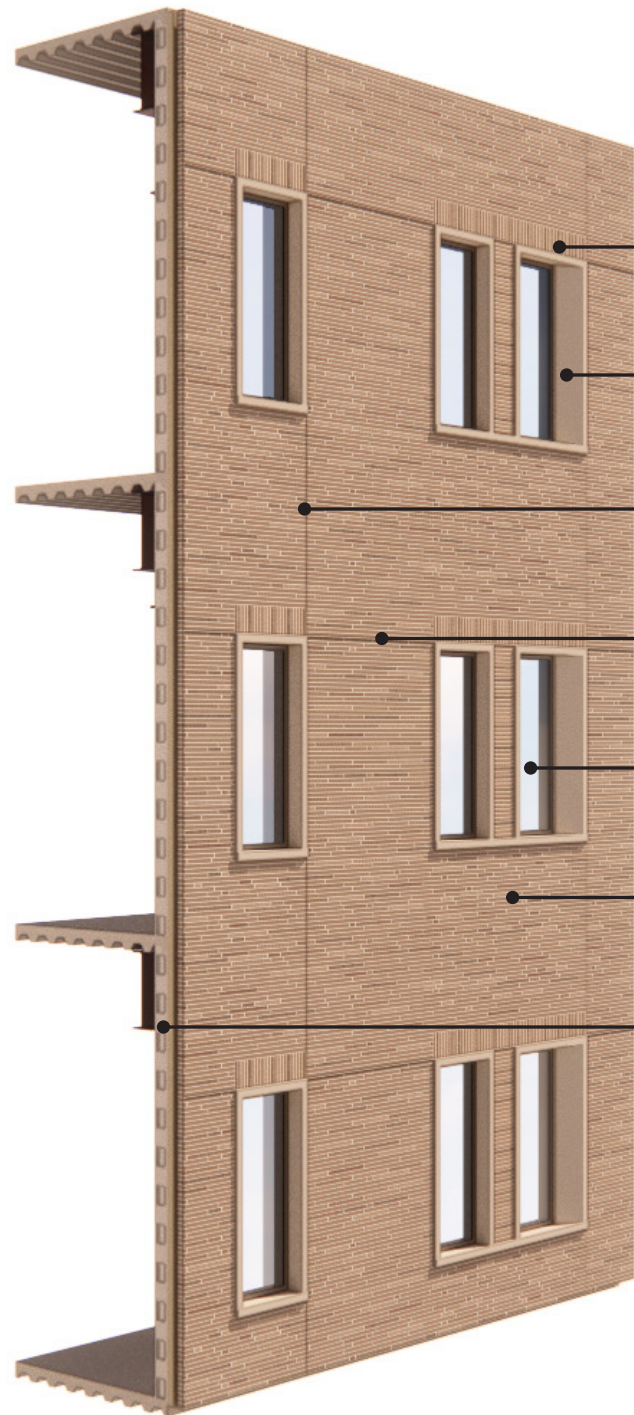


Roman Maximus Brick



Granite Base

# Material Images



*SOLDIER COURSE BRICK HEADER*

*CAST STONE WINDOW SILL AND SURROUND*

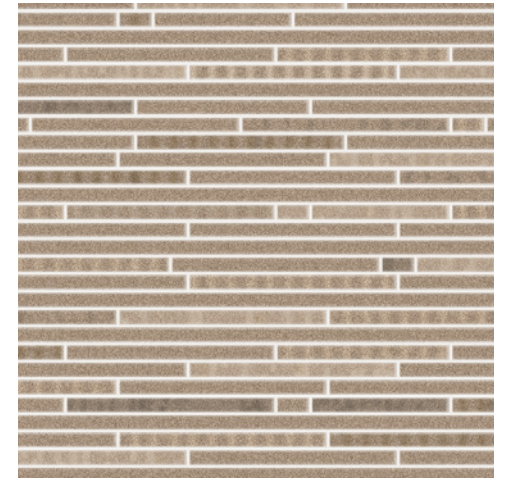
*VERTICAL EXPANSION JOINT*

*HORIZONTAL EXPANSION JOINT AT WINDOW HEAD*

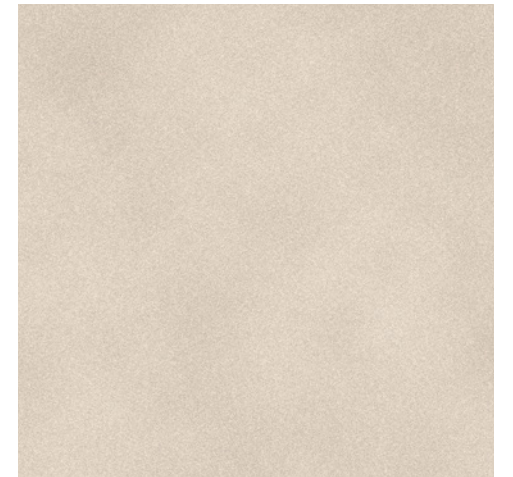
*FIXED ALUMINUM WINDOW*

*ROMAN MAXIMUS BRICK*

*8" CMU BACKUP WALL WITH RIGID INSULATION*



Roman Maximus Brick



Cast Stone Window Surround



Bronze Window Frames

# Material Images



*INSULATED GLASS UNIT*

*GLAZED SPANDREL PANEL*

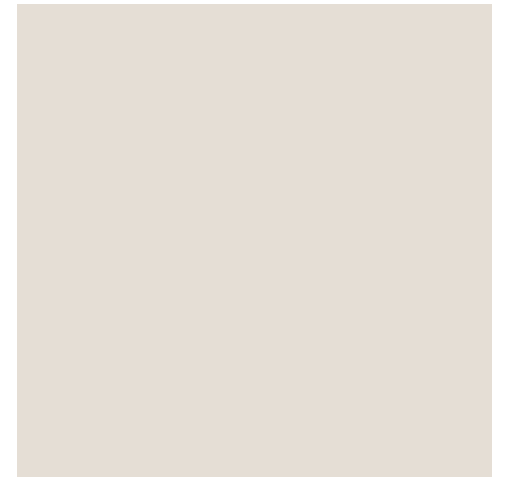
*VERTICAL FIN SUNSHADE  
ALUMINUM EXTRUSION IN BRONZE FINISH*

*HORIZONTAL SUNSHADE  
ALUMINUM EXTRUSION IN*

*REINFORCED MULLION*



Glass with Ceramic Frit



Horizontal Sunshades



Bronze Vertical Sunshades

# Building Connections

Exterior at 100 Richmond



# Building Connections

## Interior at 100 Richmond



# Building Connections

## Interior at 100 Richmond



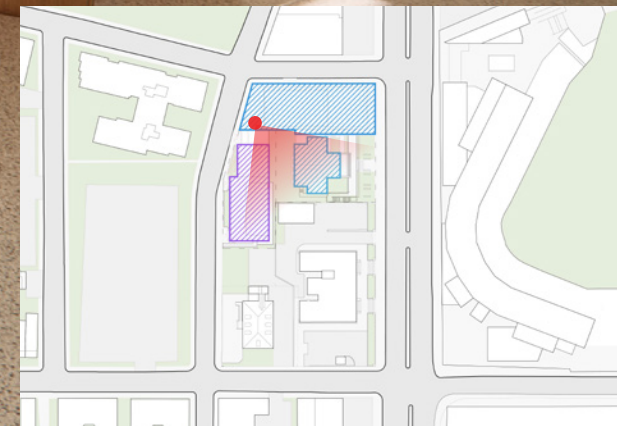
# Building Connections

## Interior at 100 Richmond



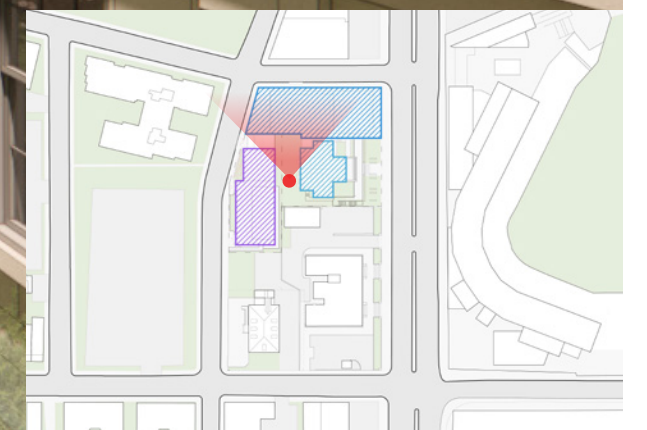
# Building Connections

## Interior Corridor to 55 Stuyvesant



# Building Connections

## Exterior Courtyard



***Thank You!!  
Questions & Answers***

