

Victory

Conceptual Design Presentation
NYC Percent for Art Program

Vinnie Bagwell, Artist

Vinnie Bagwell

Artist

Vinnie Bagwell preserves history by creating art for public places. She is a 2022-2023 inductee for the Who's Who in America for sculpture. A representational-figurative artist, Vinnie uses traditional bas-relief techniques as visual narratives to expand her storytelling. She has won numerous public-art commissions and awards around the United States, including Americans for the Arts inaugural José and Darlene Pérez Prize for civic engagement.



Previous Artwork

Vinnie Bagwell



Vinnie Bagwell, Artist
Conceptual Design Review
June 23, 2025

NYC Percent for Art Program
Beyond Sims
DCLA %/ EDC / PARKS

Previous Artwork

Frederick Douglass Circle, 2008
Hofstra University, Hempstead, NY



Vinnie Bagwell, Artist
Conceptual Design Review
June 23, 2025

NYC Percent for Art Program
Beyond Sims
DCLA %/ EDC / PARKS



Previous Artwork

Frederick Douglass Circle, 2008
Hofstra University, Hempstead, New York
Detail of the back of the chair and speech



Vinnie Bagwell, Artist
Conceptual Design Review
June 23, 2025

NYC Percent for Art Program
Beyond Sims
DCLA %/ EDC / PARKS



Previous Artwork

Frederick Douglas, 2025
Cedar Hills George Washington University Medical Center
Washington, DC





Vinnie Bagwell, Artist
Conceptual Design Review
June 23, 2025

NYC Percent for Art Program
Beyond Sims
DCLA %/ EDC / PARKS

Previous Artwork

Legacies, 2012
Chickasaw Heritage Park
Memphis, TN



Vinnie Bagwell, Artist
Conceptual Design Review
June 23, 2025

NYC Percent for Art Program
Beyond Sims
DCLA %/ EDC / PARKS

Previous Artwork

*Enslaved Africans Rain Garden:
Sola and Olumide*, 2022
Yonkers, NY



Vinnie Bagwell, Artist
Conceptual Design Review
June 23, 2025

NYC Percent for Art Program
Beyond Sims
DCLA %/ EDC / PARKS

Previous Artwork

The Piano Lesson: Grace, 2012
The Signature Theatre
New York, NY



Vinnie Bagwell, Artist
Conceptual Design Review
June 23, 2025

NYC Percent for Art Program
Beyond Sims
DCLA %/ EDC / PARKS



Previous Artwork

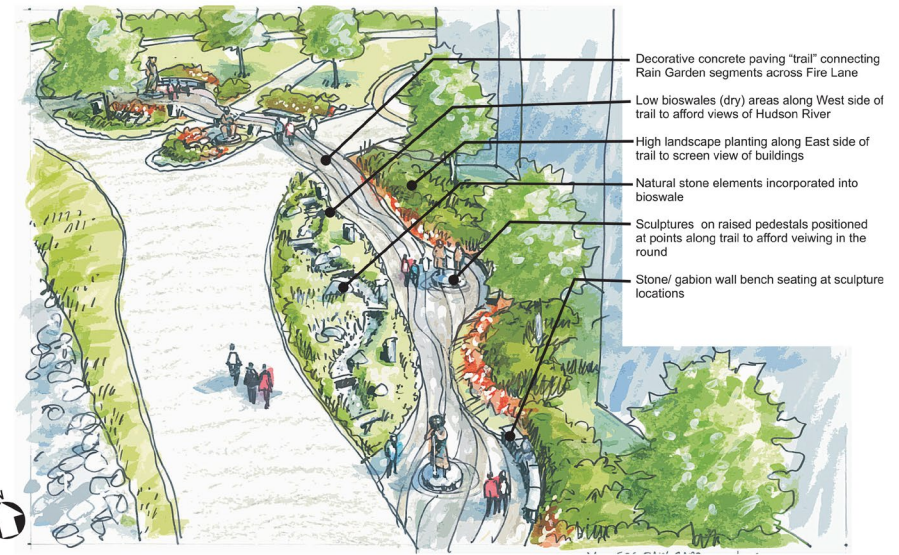
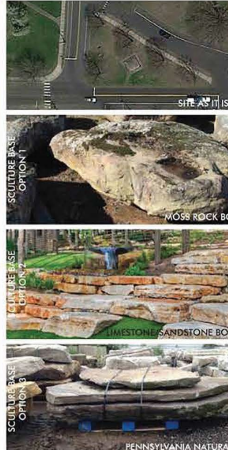
Enslaved Africans Rain Garden:
I'Satta, 2022
Yonkers, NY

BCT Design Group

Bryce Turner, FAIA, CEO of BCT Design Group, is passionate about pedestrian-oriented spaces and the built environment that interacts with them. Licensed in 20 U.S. states, he is well versed in the cultural and commercial amenities that accentuate public spaces and the design and planning that creates them.

Together, Vinnie and Bryce are creating memorable destinations.





Concept Aerial Sketch

Project Site

Beyond Sims

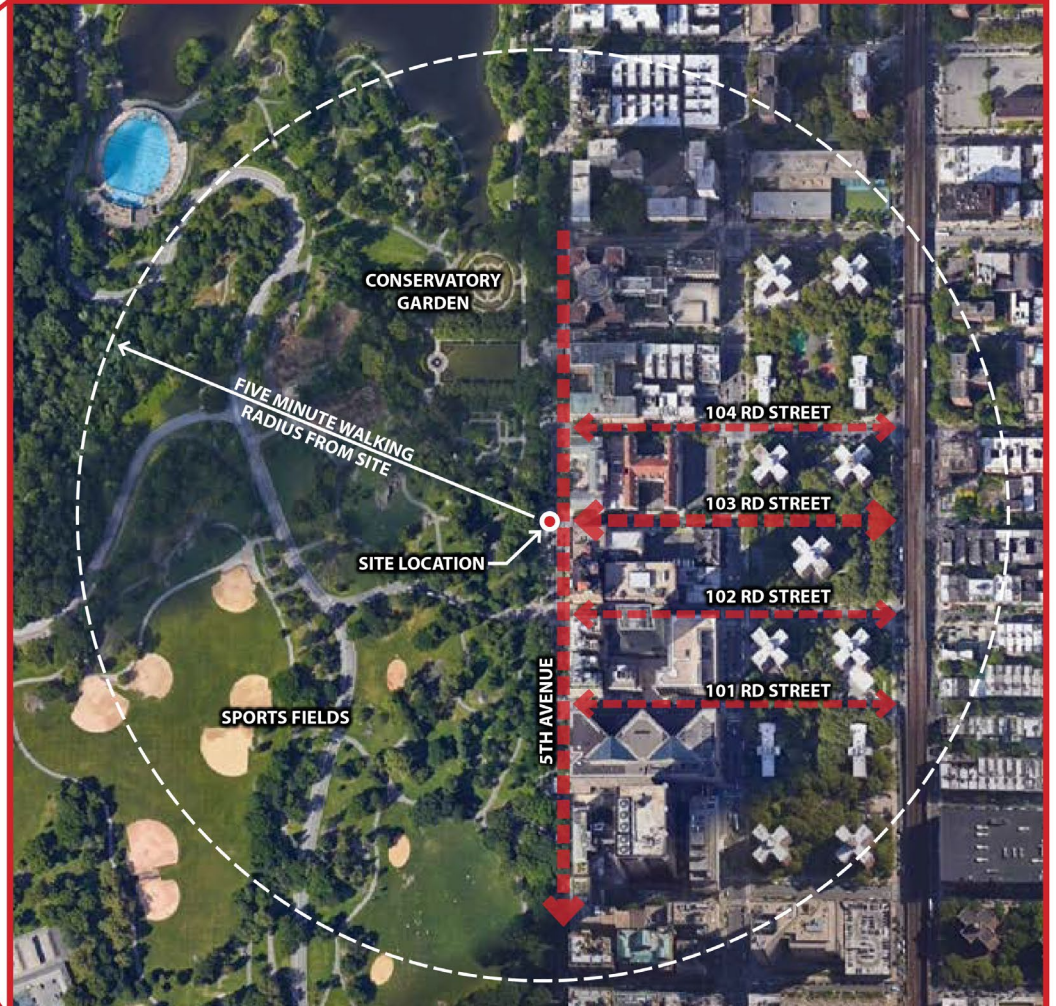
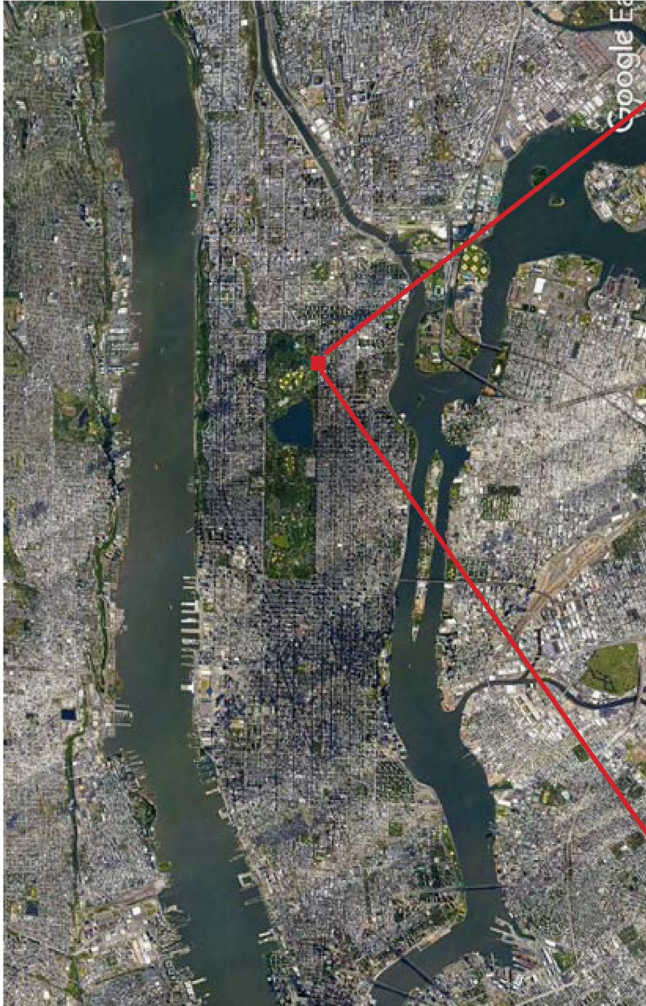


Manhattan

Project Site

Fifth Avenue at 103rd Street

Five-minute walking radius

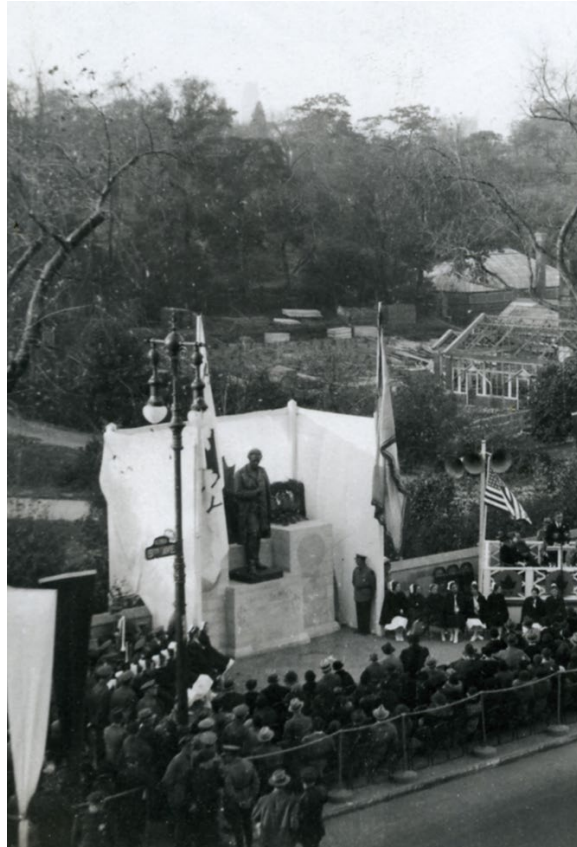


Project Site

Fifth Avenue at 103rd Street



Dr. J. Marion Sims
Original location, Bryant Park
1897



Dr. J. Marion Sims,
Relocation Dedication, Central Park
1934



Dr. J. Marion Sims
Central Park
2017

Project Site

Fifth Avenue at 103rd Street



Council Speaker Melissa Mark-Viverito
2017



Removal
2018

Committee to Empower Voices for Healing and Equity
Invites You to Attend

BEYOND SIMS ARTIST SELECTION PANEL

Schomburg Center for Research in Black Culture - American Negro Theatre
515 Malcolm X Blvd. New York, NY 10037
Saturday, February 23rd
11 am - 2 pm - Doors Open at 10:30 am

FREE ENTRANCE

WE WANT TO HEAR FROM YOU

Following years of community activism, in April 2018 the City removed the statue of Dr. J. Marion Sims from Central Park East. Sims was a physician who gained fame in Western medicine for his experiments on enslaved African-American women. The Committee to Empower Voices for Healing and Equity was formed to move forward the process of commissioning a new artwork for the site by the end of 2020.

Join us for the artist selection panel to narrow down our pool of applicants to a select few artists and/or artist collectives who will be invited to submit proposals. This is an opportunity to meet members of the Steering Committee and to make your voice heard in the artist selection process. Feedback from the community throughout the selection process is essential as we collaborate on commissioning a new monument that helps us to heal and move beyond this painful legacy.

Main entrance fully accessible. For further information on accessibility or to request accommodations, please contact our Disability Service Facilitator at disability.facilitator@culture.nyc.gov or (212) 513-9378.

For questions please contact: percent@culture.nyc.gov

NYC Cultural Affairs **NYC Center for Health Equity** **NYC Parks** **East Harlem PRESERVATION** **MUSEUM OF THE CITY OF NEW YORK** **NYC Department of Cultural Affairs** **THE NEW YORK CITY DEPARTMENT OF HEALTH & MENTAL HYGIENE**

Beyond Sims
2018

Project Site

Fifth Avenue at 103rd Street



Vinnie Bagwell, Artist
Conceptual Design Review
June 23, 2025

NYC Percent for Art Program
Beyond Sims
DCLA %/ EDC / PARKS

Context
Current condition

Victory

Artwork Proposal

Conceptual Design



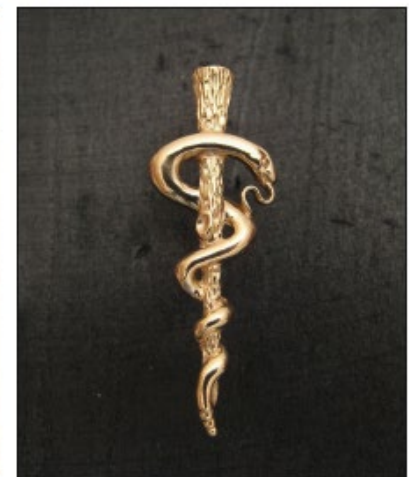
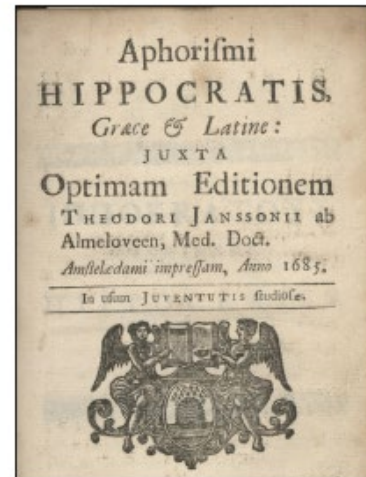
CONCEPT INSPIRATIONS

Several destinations within a five-minute walk of the installation site on Fifth Avenue at the intersection of 103rd Street in New York City influenced our concept for a public-art installation to celebrate the women who made modern gynecological practices possible, promote civic engagement, and foster racial reconciliation:

The Conservatory Garden is Central Park's six-acre formal garden. The Garden's main entrance is through the Vanderbilt Gate on Fifth Avenue between 104th and 105th Streets. This magnificent iron gate, made in Paris in 1894, originally stood before the Vanderbilt mansion at Fifth Avenue and 58th Street.

The Museum of the City of New York is located across the street. In the arts, "Victory" is often portrayed in classical sculpture as an angel. They right all the souls of humanity, and have inspired generations of artists. However, conventions for portraying angels were slow to develop and, once established, were slow to change. Thus, it is more than difficult to find examples of black people depicted as angels in the sculpting medium in public art.

The New York Academy of Medicine is directly across the street from the installation site. Its mission is to progress towards improved health through attaining health equity for healing. Thus, the impetus for our design was drawn from (1) the Rod of Asclepius, which is the symbol of the American Medical Association. (2) A quote from the King James Bible Numbers 21:8 "...And the Lord said unto Moses, 'Make thee a fiery serpent, and set it upon a pole; and it shall come to pass that everyone that is bitten, when he look upon it, shall live.'" (3) The Hippocratic Oath is an oath to uphold specific ethical standards historically taken by physicians. It is often said that the exact phrase "First do no harm" (Latin: Primum non nocere) is a part of the original Hippocratic oath. It also mentions the special position of the doctor with regard to his patients, especially women and girls.



VICTORY

Description

A **guide for souls**—a 9' h. figure (approximately 14' h. with wings)—simply titled, *Victory*, will be cast in bronze and finished in a coal-black patina. The golden flame in her right hand represents the power of enlightenment. Her staff—crowned by the Arc of Asclepius encircled by a wreath—represents the unending circle of life.

Bas-relief techniques: A narrative in bas relief on the surface of *Victory's* garment adds visual intrigue to capture the eye and hold it, telling an epic story to provoke critical thinking: The shape of the continent of Africa cut away from her heart represents the Motherland's ruinous loss of more than 12-million people over hundreds of years.

Twelve women are silhouetted, representing the resilient nameless. A slave-ship schematic "tattooed" on *Victory's* back reminds the viewer of the inhumanity of transporting enslaved women like spoons in a draw. Braille reads, "*My Soul looks back and wonders how I got over!*" on her right side and "*Primum non nocere!*" (meaning "*First do no harm*") on the left.

"*Betsy, Lucy, Anarcha, and countless millions of African women were imbruted, enslaved, and stripped of their human rights...*" are the words emblazoned in the garment hem to remind viewers of the triumph of the generations who followed in their path. *Victory* was designed to function among us as an educator and a pioneer for change.





VICTORY

Description

Hand-cast bronze, an “eternal flame” (polished bronze) will rise out of the right hand.



VICTORY

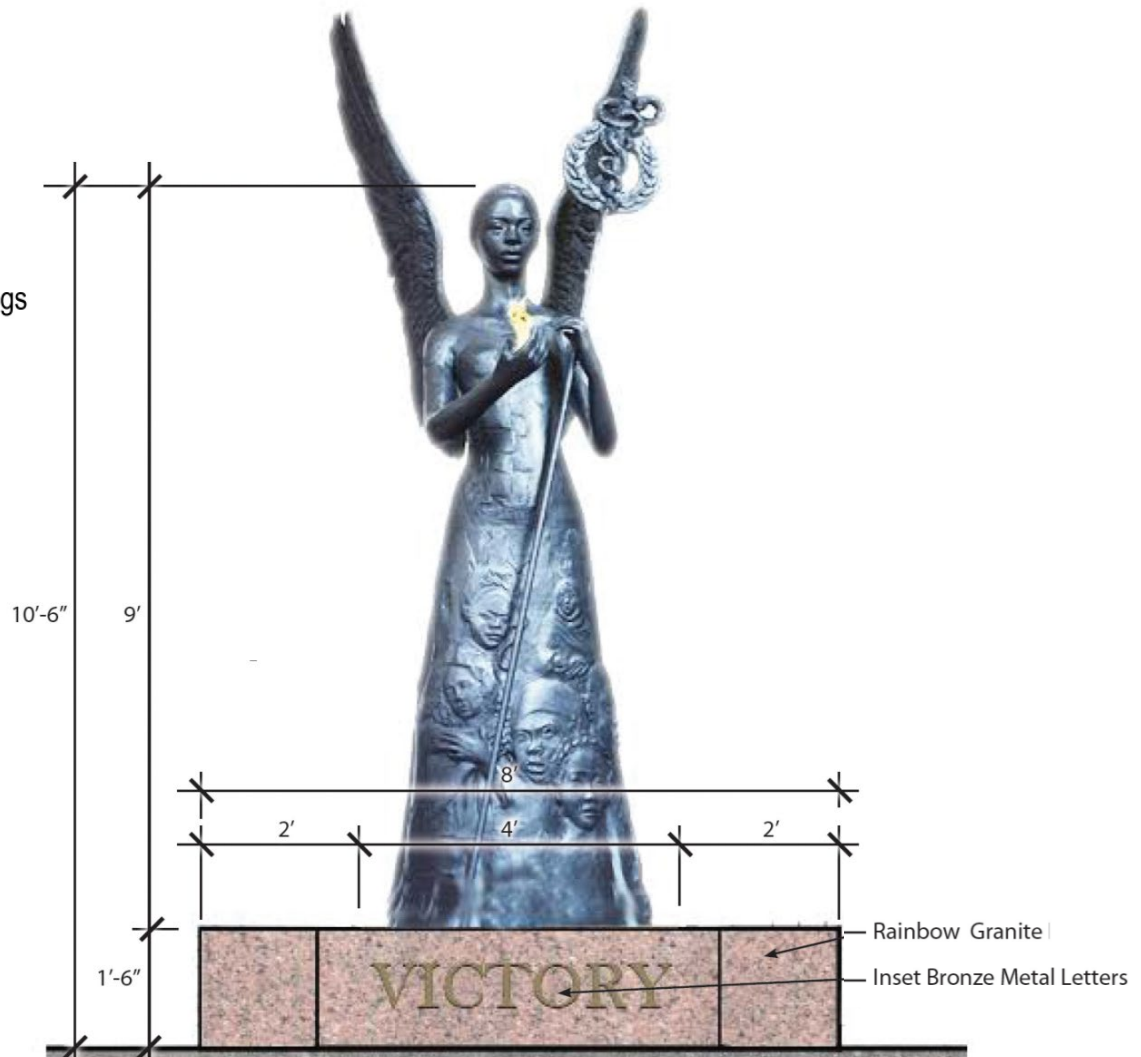
Description

Sculpture

- Medium: Bronze
- Size: 9' Figure | Approximately 14' with wings
- Color: Coal-black patina, polished
- Flame 1' h.

Pedestal

- Medium: Rainbow® granite
- Size: 8'w. x 4.5' d. x 1' 6"h.
- Finish: Textured
- Brass-inlaid lettering



VICTORY

Description

The Sunburst Motif in granite pavers represents the vital Universal light of a living democracy, forward motion, and rising aspirations. It affirms our ancestors strong belief in the presence and power of God in our everyday life.

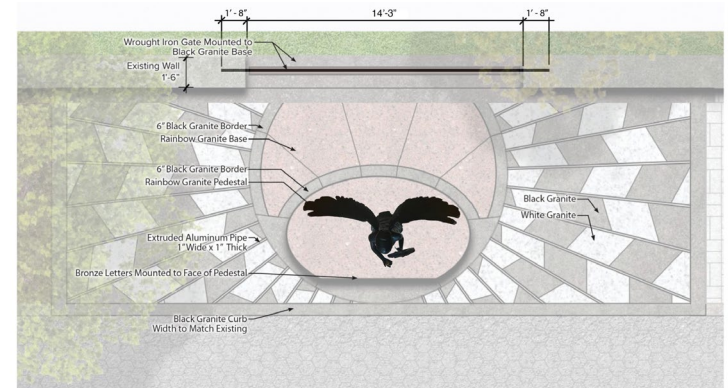
Pavers and Slabs Mesabi® Granite, Academy Black® Granite, Rainbow® Granite will create contrast in the graphic pattern and enhance visual interest.

Extruded-Aluminum Pipe will be installed between the granite pavers. These 1"-wide decorative metal insets, with a rectangular sectional shape, are a high-grade. It is a common fabrication that can easily be cut to length in field and fastened to a bituminous surface alongside granite pavers of equal thickness. It will be held in place by anchor bolts as consistent with paver edging. Installation will be simple and durable. Non-corrosive metal can be embedded into paving for decorative purposes and still maintain the same durability as trench drains and utility covers.

A Textured Rainbow® Granite Ellipse Pedestal will support the bronze figure. A slice off the front will bear the title, VICTORY, using a classic capitalized serif-font: Baskerville, which will be inlaid in brass in incised granite.

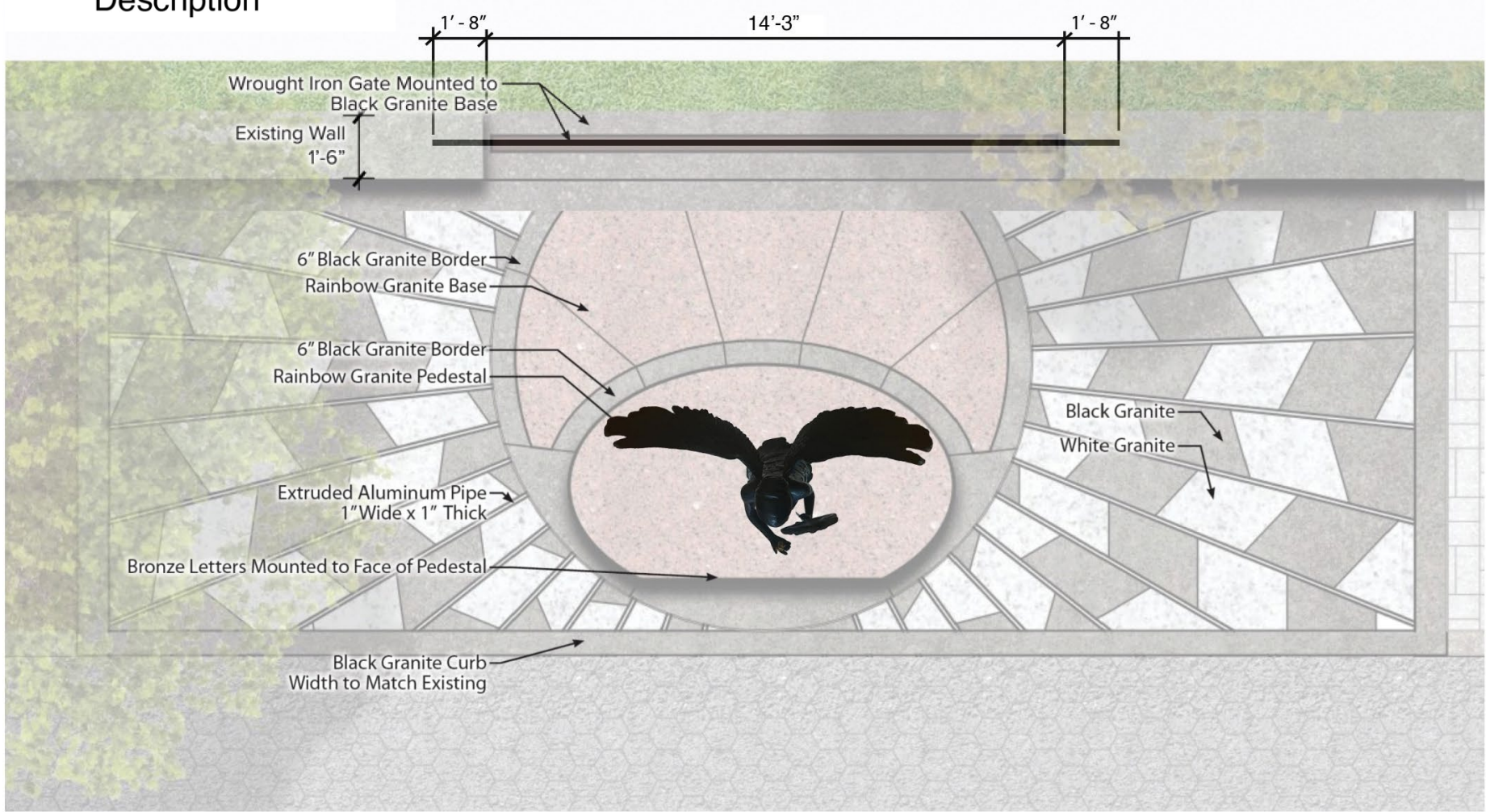
Wall-End Finish: The Conservancy will oversee finishing the stone wall ends.

An Ornamental Wrought-Iron Gate shall inhabit the open space that was occupied by the J. Marion Sims plinth. The arching 16'-10"-high gate is designed to draw the eye up. The side railings aid in expanding the width of the eye's sweep and balancing the intake of the visual presentation. Additional density in the design of the bottom will help to make climbing prohibitive. Central Park boasts four ornamental gates: Osborn, Lehman, Vanderbilt, and Levy. This will become the fifth.



VICTORY

Description



VICTORY

Site-Plan: Design Samples

Academy Black® Granite



Mesabi® Granite



Rainbow® Granite



Brass Letters in Granite

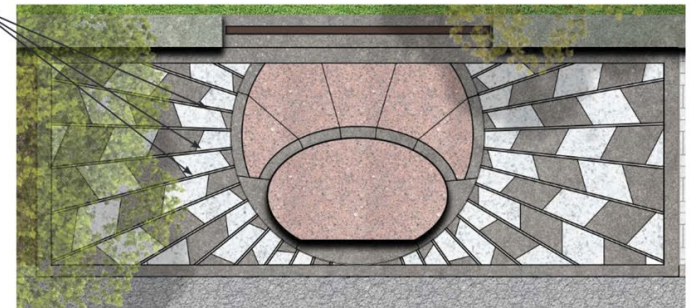
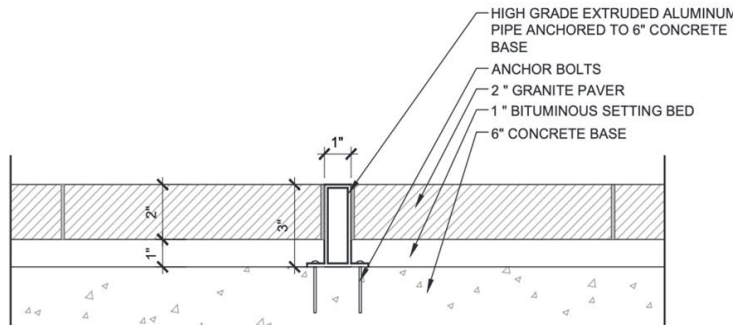


Extruded-Aluminum Pipe



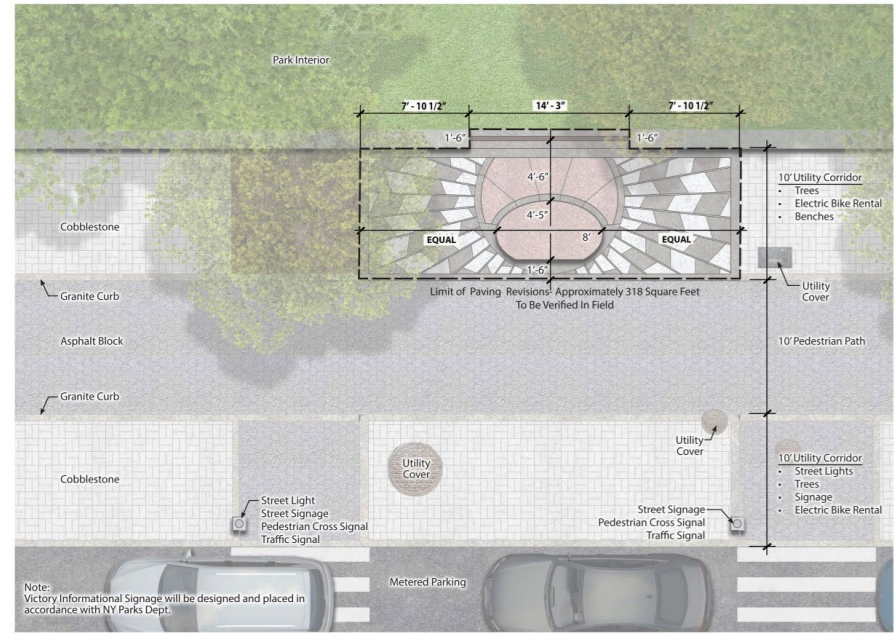
Extruded-Aluminum Pipe Detail

Note:
The 1" wide decorative metal inset into the granite paving is integral to the overall design. It represents the light of knowledge gained by the painful sacrifice of the women. This surgical knowledge now permeates throughout the world and has helped to save the lives of women for 140 years.



VICTORY

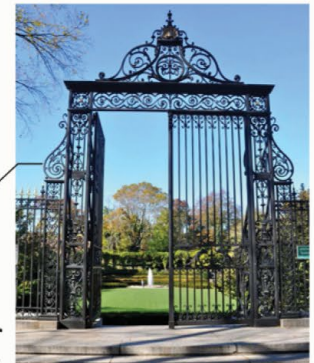
Site-Plan: Overview Comparison



VICTORY

Site Plan: Gate

The 1.5-ton wrought-iron gate will be fabricated in one piece: The two side scrolls will be not be mechanically fastened to the landmarked wall. The design will have pickets with only a 3.5" gap up to 4' H. Decorative spikes have been designed into the base to obstruct any foothold. The gate will have flush ground welds, ground smooth. The color will be a brushed semi-gloss black finish. Eight (8) vertical rods will extend to embed in the concrete foundation and will be treated to resist corrosion.



3.5" Picket Gap and Decorative Spikes to Prevent Climbing

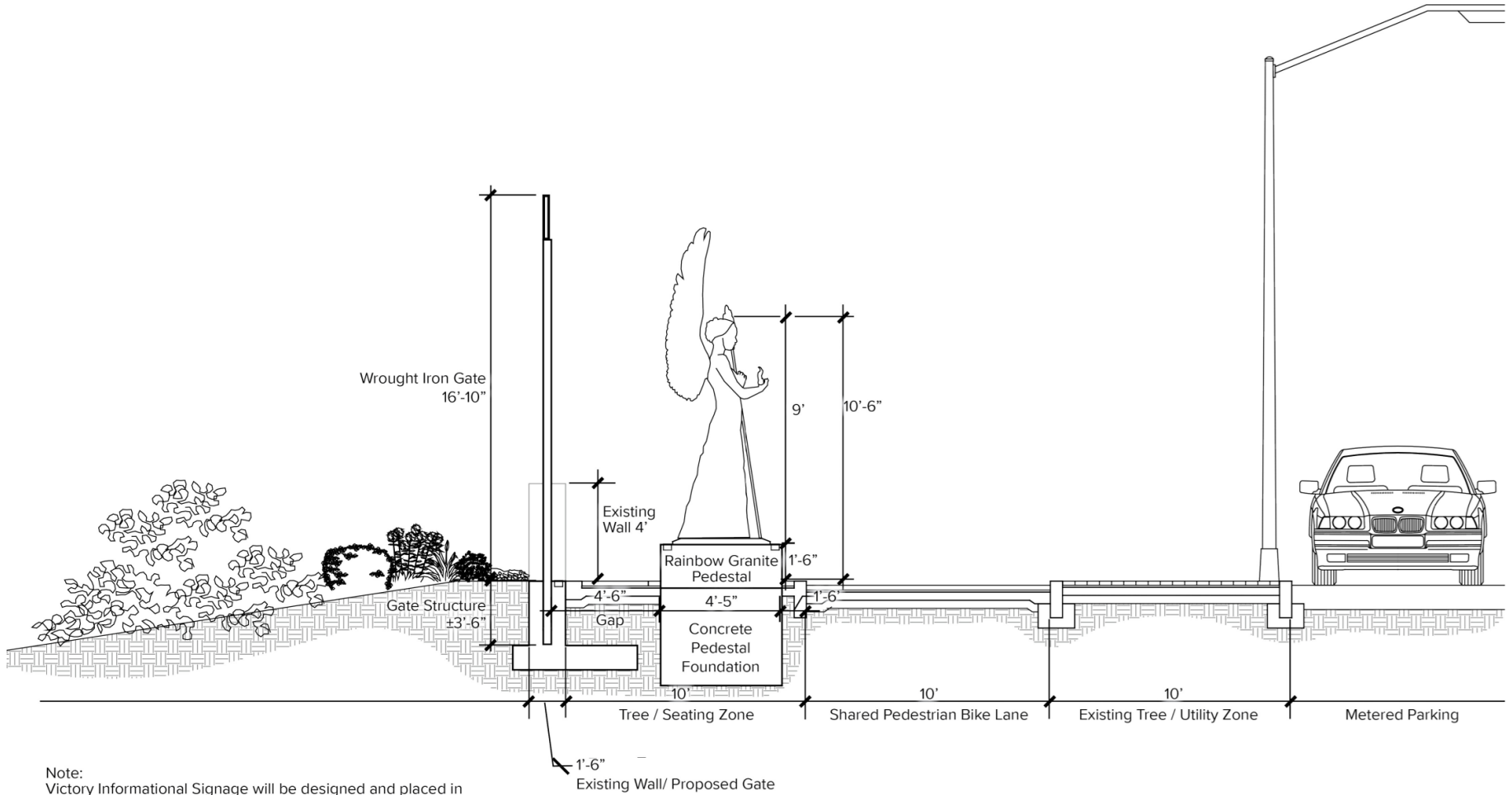
16'-10"

3.5"



VICTORY

Site Plan: Elevation



VICTORY

Site Plan. End-cap Design Precedents



Entrance at E 97th Street and Fifth Avenue



New ADA wall entrance
E 64th Street and Fifth Avenue



End treatment by CPC on new entrance
at E 64th Street

VICTORY

Site Plan: Precedent



Richard Morris Hunt Memorial
at E 70th Street and Fifth Avenue



Richard Morris Hunt Memorial
(detail) at E 70th Street and Fifth Avenue

VICTORY

Site Plan: Precedent



Frederick Douglass Memorial



Literary Walk Restoration Marker



U.S.S. Maine National Monument



Imagine

VICTORY

Site Plan: Precedent



Romeo and Juliet, 1978



Group of Bears, 1990



Duke Ellington Memorial, 1997



Women's Rights Pioneers Monument, 2020

VICTORY

Rear View

The Central Park Conservancy will lead the effort on the horticulture treatment behind the gate so that it is in line with the broader park planning scheme.





Transforming the experience of place informs viewers that artistry is a powerful and useful tool of social transformation; one capable of condensing our thoughts, distilling our minds and renewing our hopes and aspirations.



VICTORY

Appendix

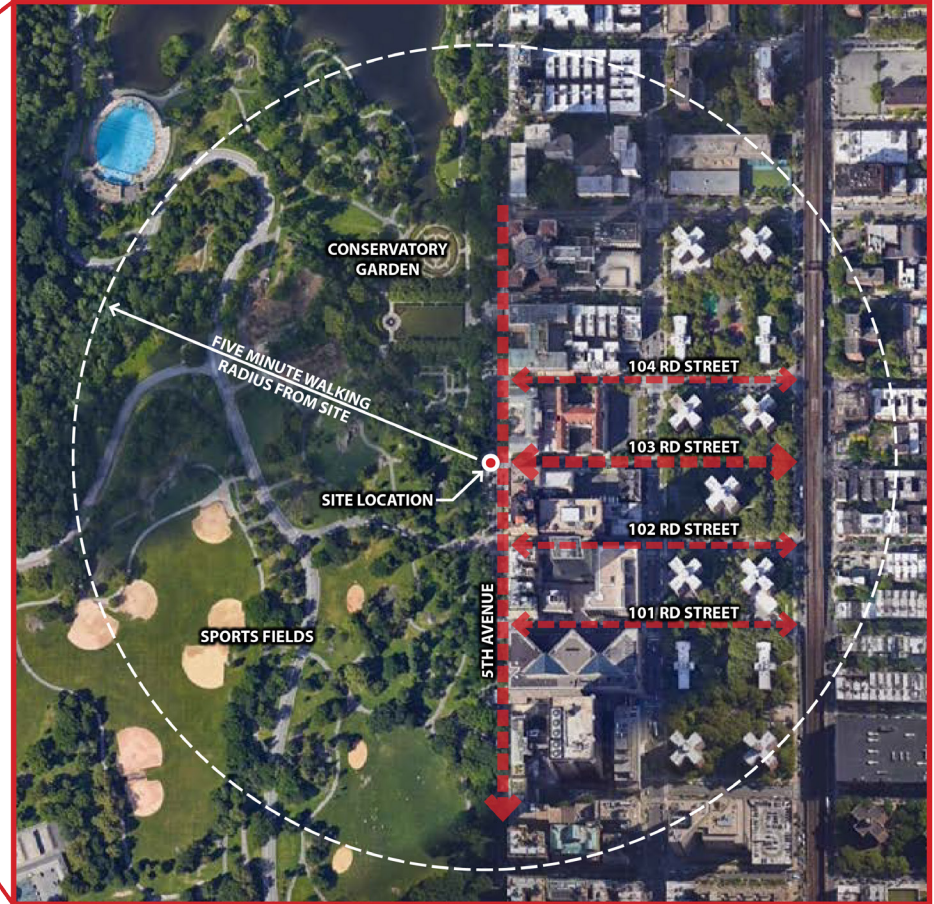
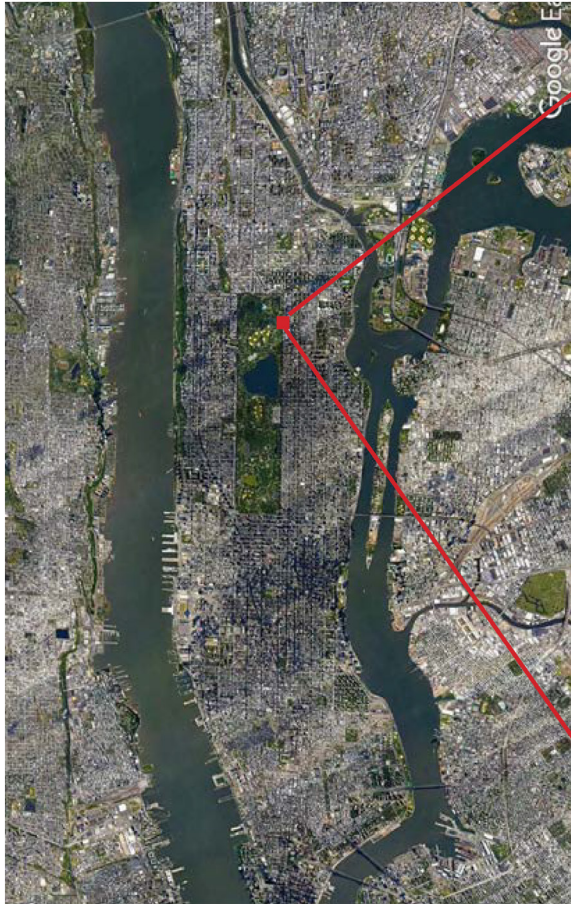
Percent for Art Panel Proposal

Beyond Sims



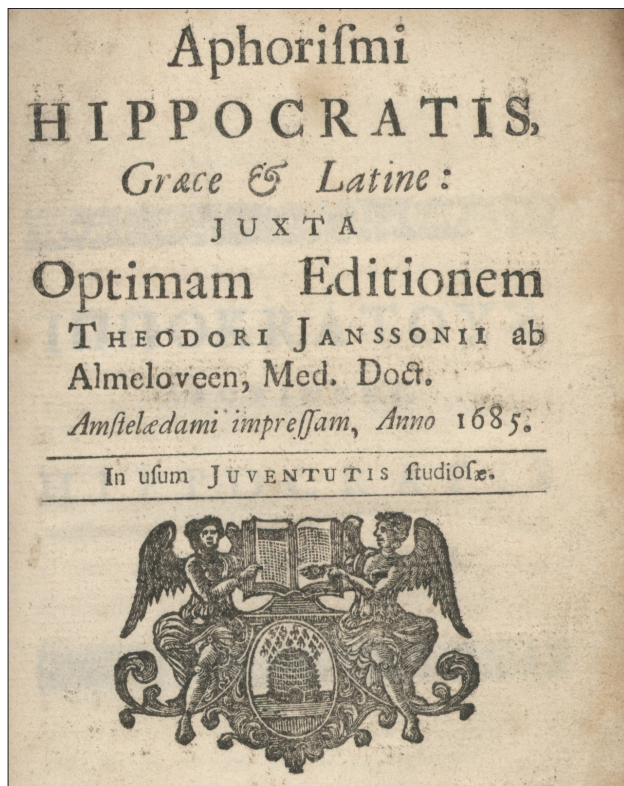
Victory

Beyond
Sims

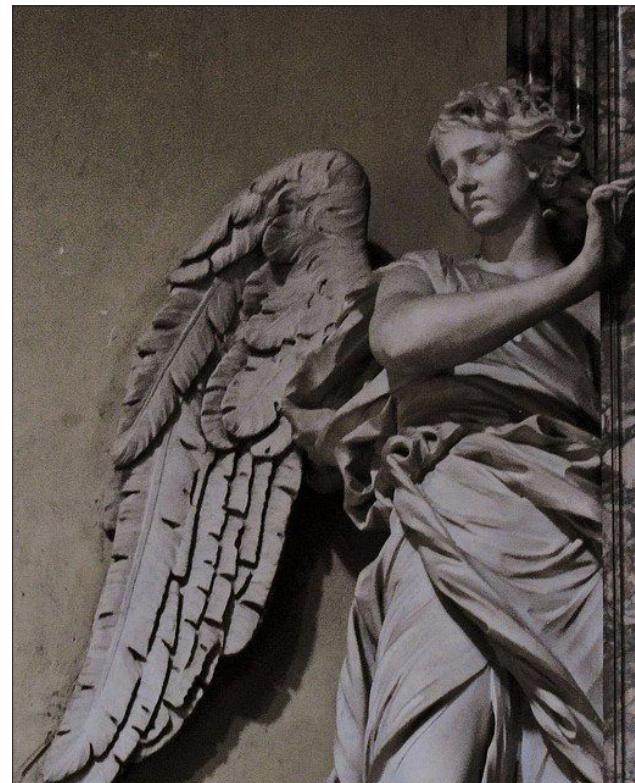




Inspirations: The Conservancy Gardens



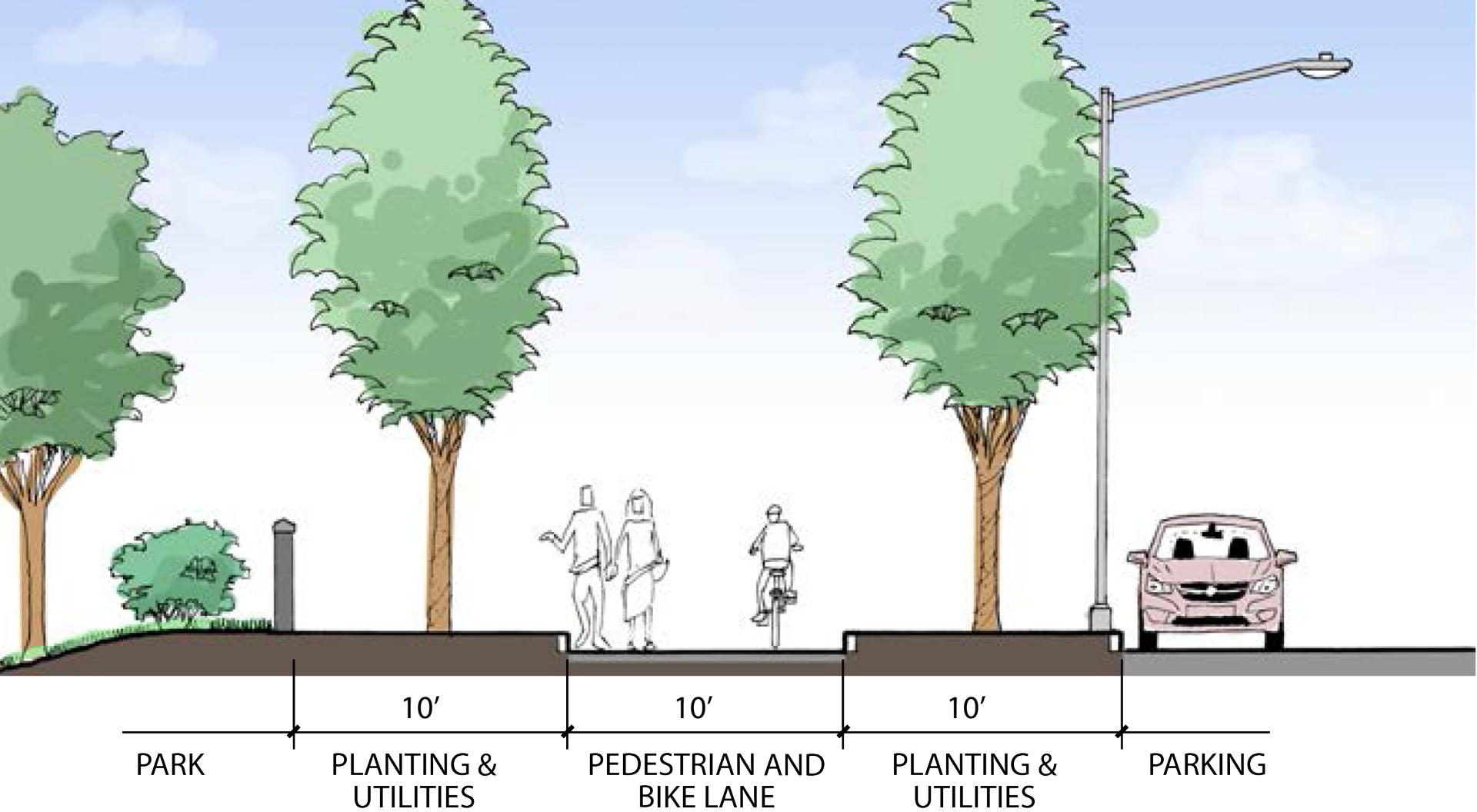
New York Academy of Medicine



and the Museum of the City of New York



A 30' x 30' sanctuary will transform the perception of place and balance a narrative about enslaved-African women.



PARK

PLANTING &
UTILITIES

PEDESTRIAN AND
BIKE LANE

PLANTING &
UTILITIES

PARKING



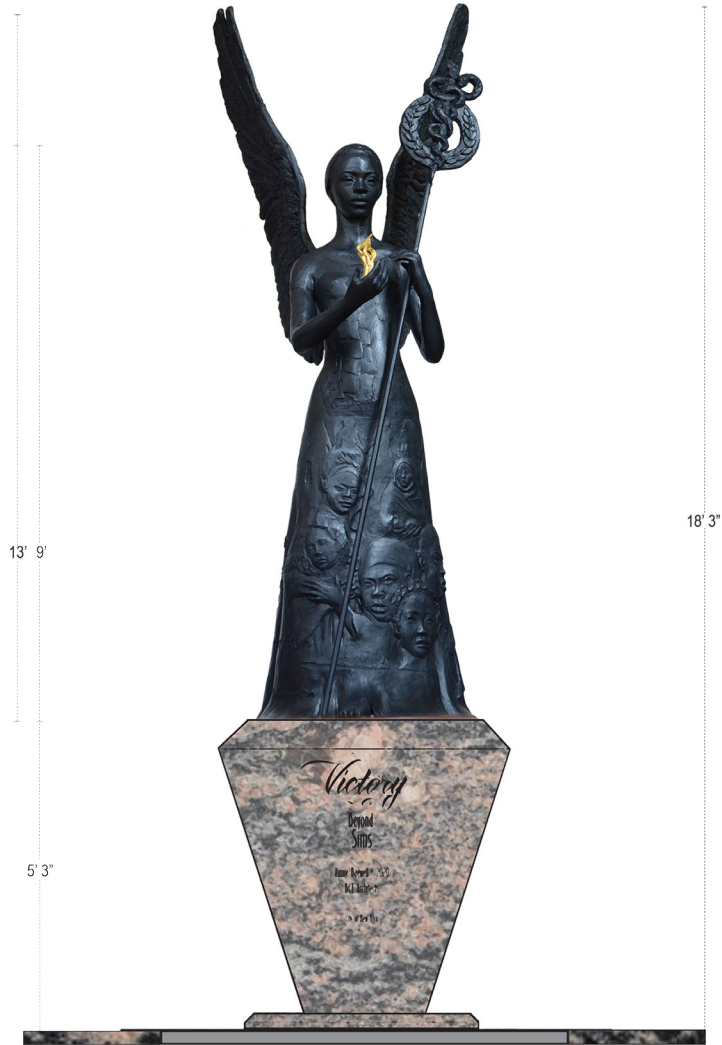
A guide for souls shall wield the power of enlightenment.



A reminder of the Oath: *"First, do no harm"*.



Viewers shall discover an unfolding story of endurance...



13' 9"

18' 3"

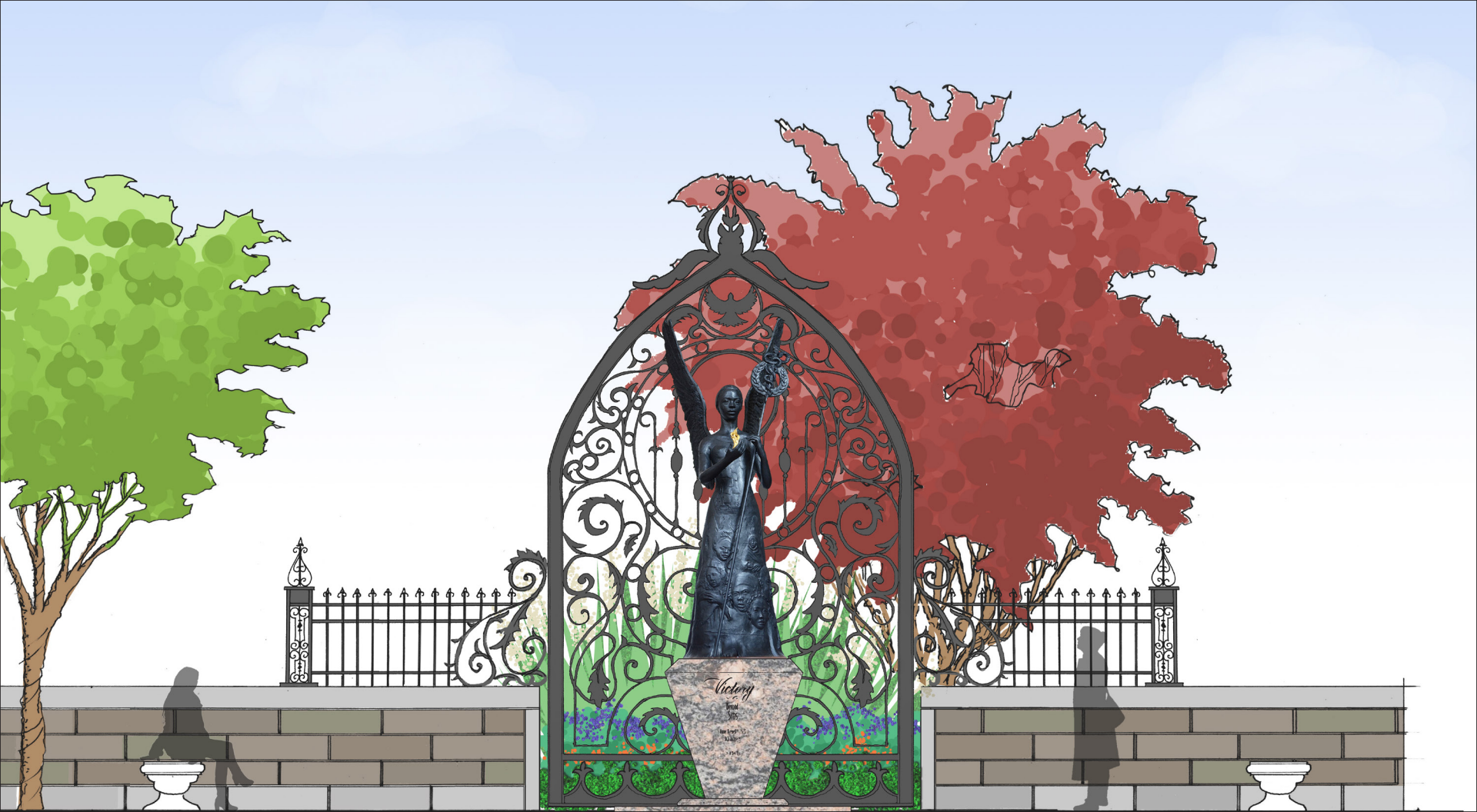
5' 3"

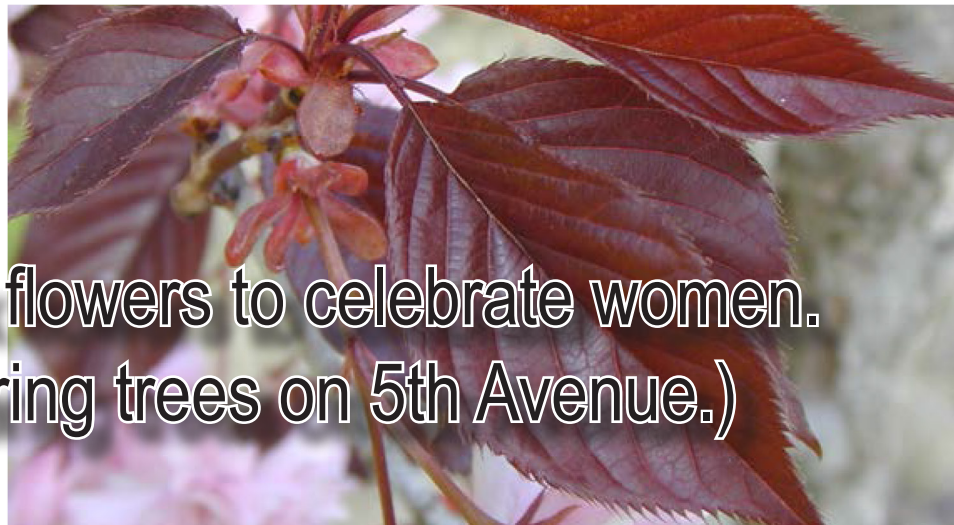
Victory

Beyond
Stars

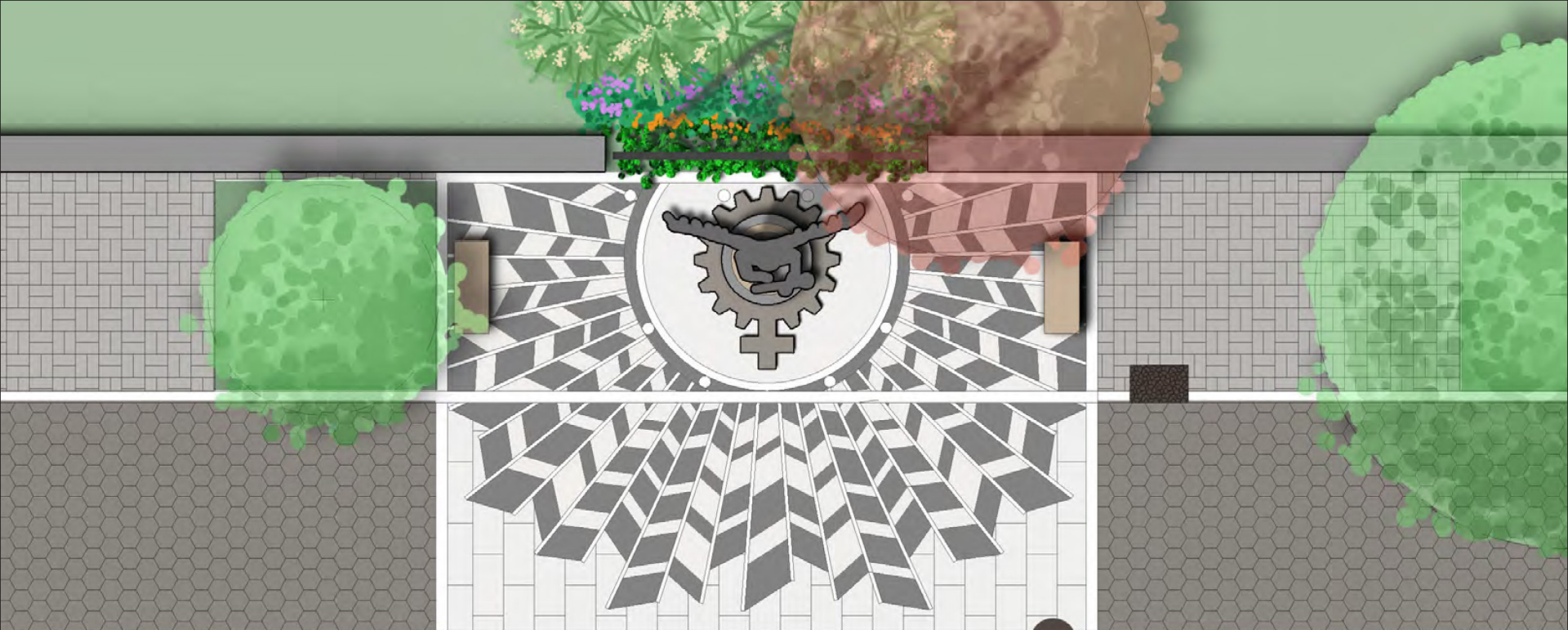
June 2001 - 11/11
W. H. R. S.

© 2001





A plum tree shall bloom pink flowers to celebrate women.
(There are no other flowering trees on 5th Avenue.)



Granite pavers designed in a sunburst motif shall represent the vital Universal light of a living democracy...



PAMPAS GRASS



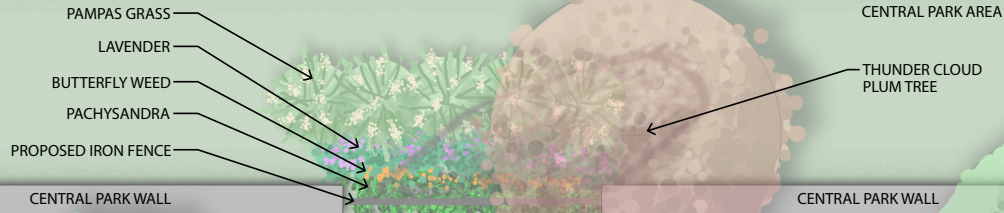
LAVENDER



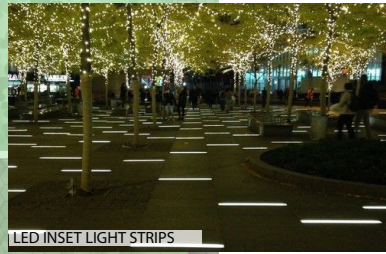
BUTTERFLY WEED



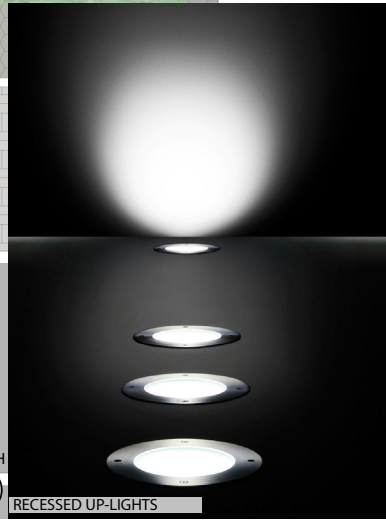
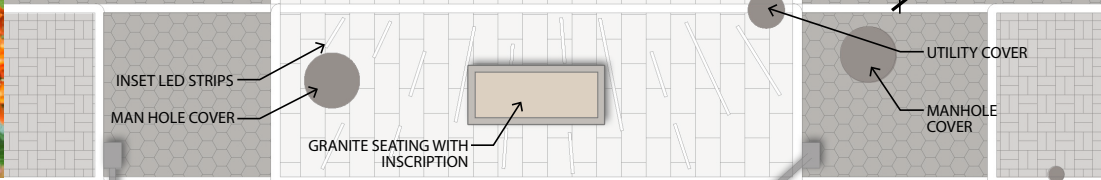
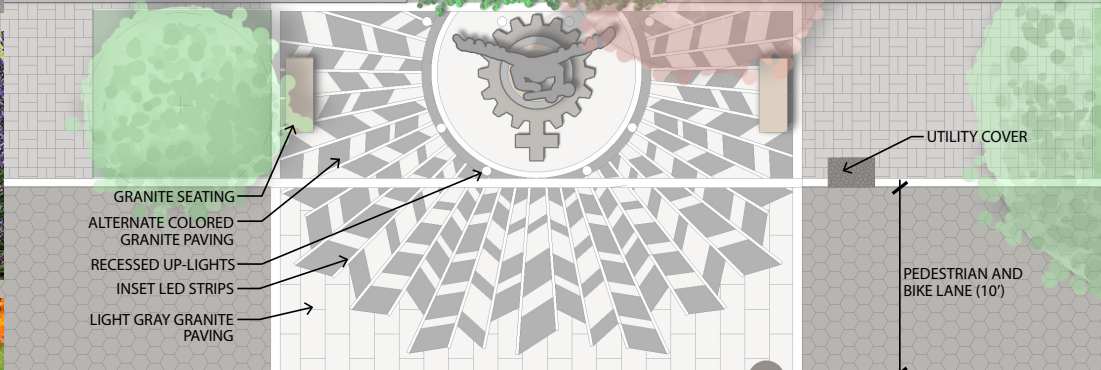
PACHYSANDRA



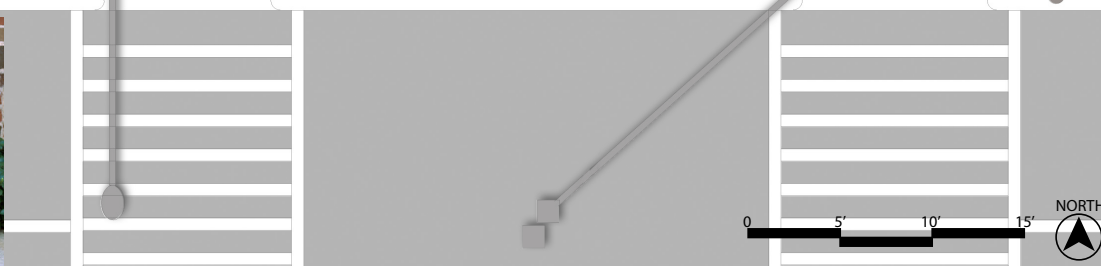
ALTERNATE PAVING COLOR



LED INSET LIGHT STRIPS



RECESSED UP-LIGHTS





LED-light strips create dynamic in-pavement night lighting.

SPECIFICATIONS *Continued*

Pedestal

- Rainbow granite
- 5'd x 5'h Circle
- 6" x 6" Upper bevel | 5' x 4.5' Lower bevel
- Sandblast all surfaces
- Polished incised text:
 - "Victory Beyond Sims"
 - "Vinnie Bagwell ©2020"
 - "BCT Architects"
 - "City of New York"

Base

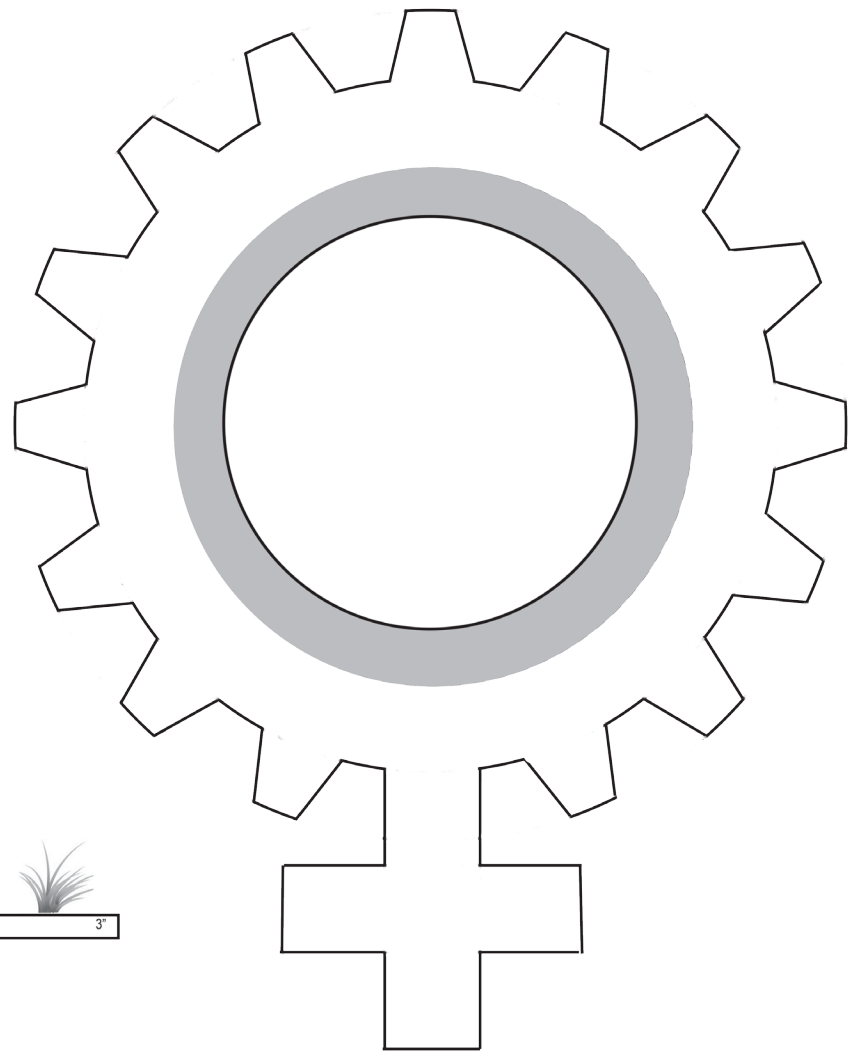
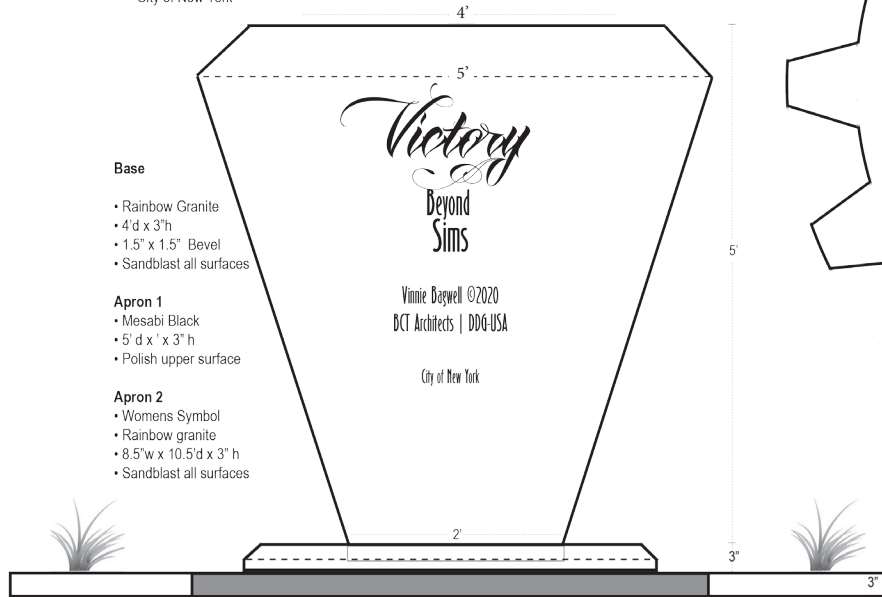
- Rainbow Granite
- 4'd x 3'h
- 1.5" x 1.5" Bevel
- Sandblast all surfaces

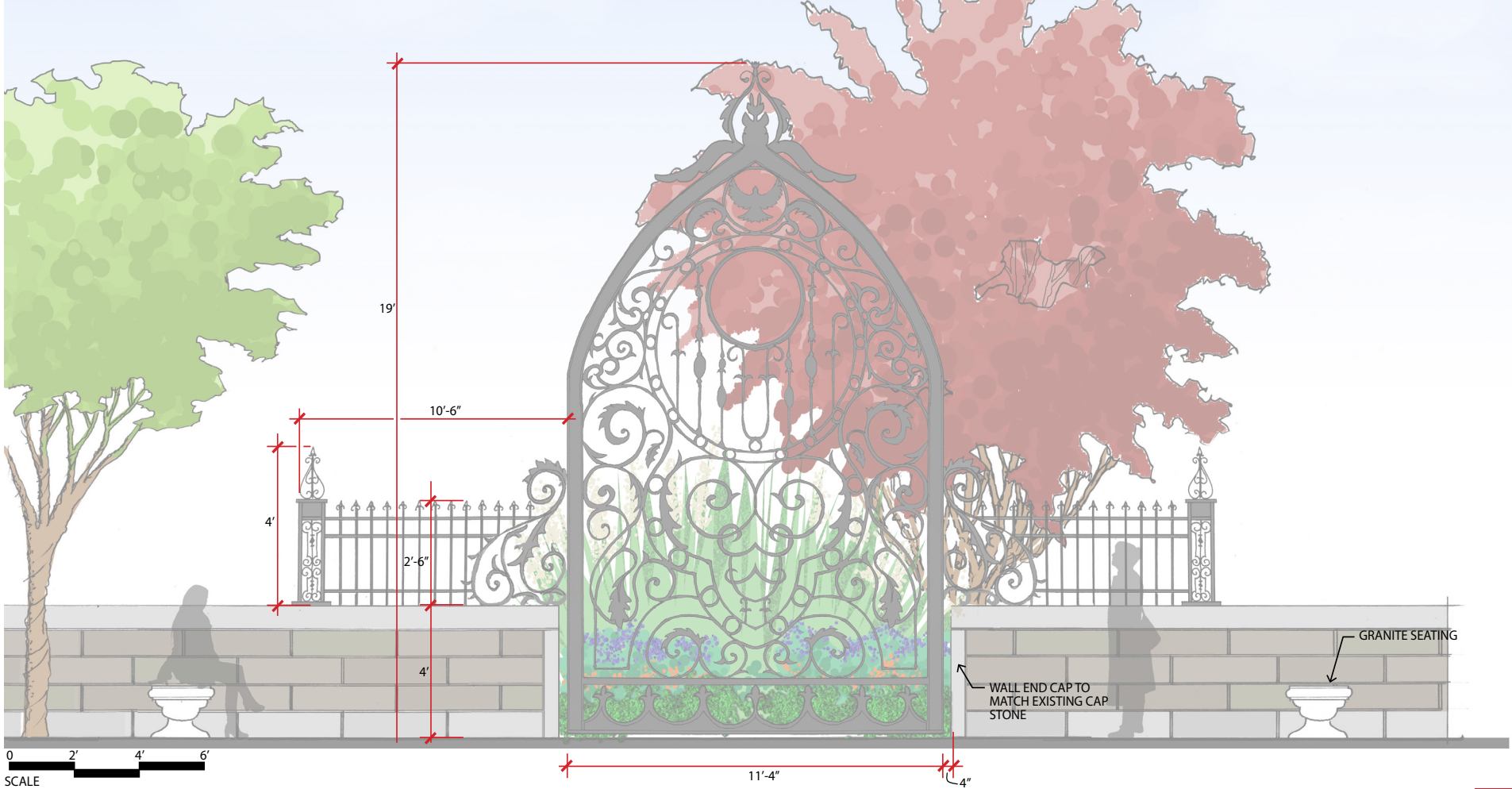
Apron 1

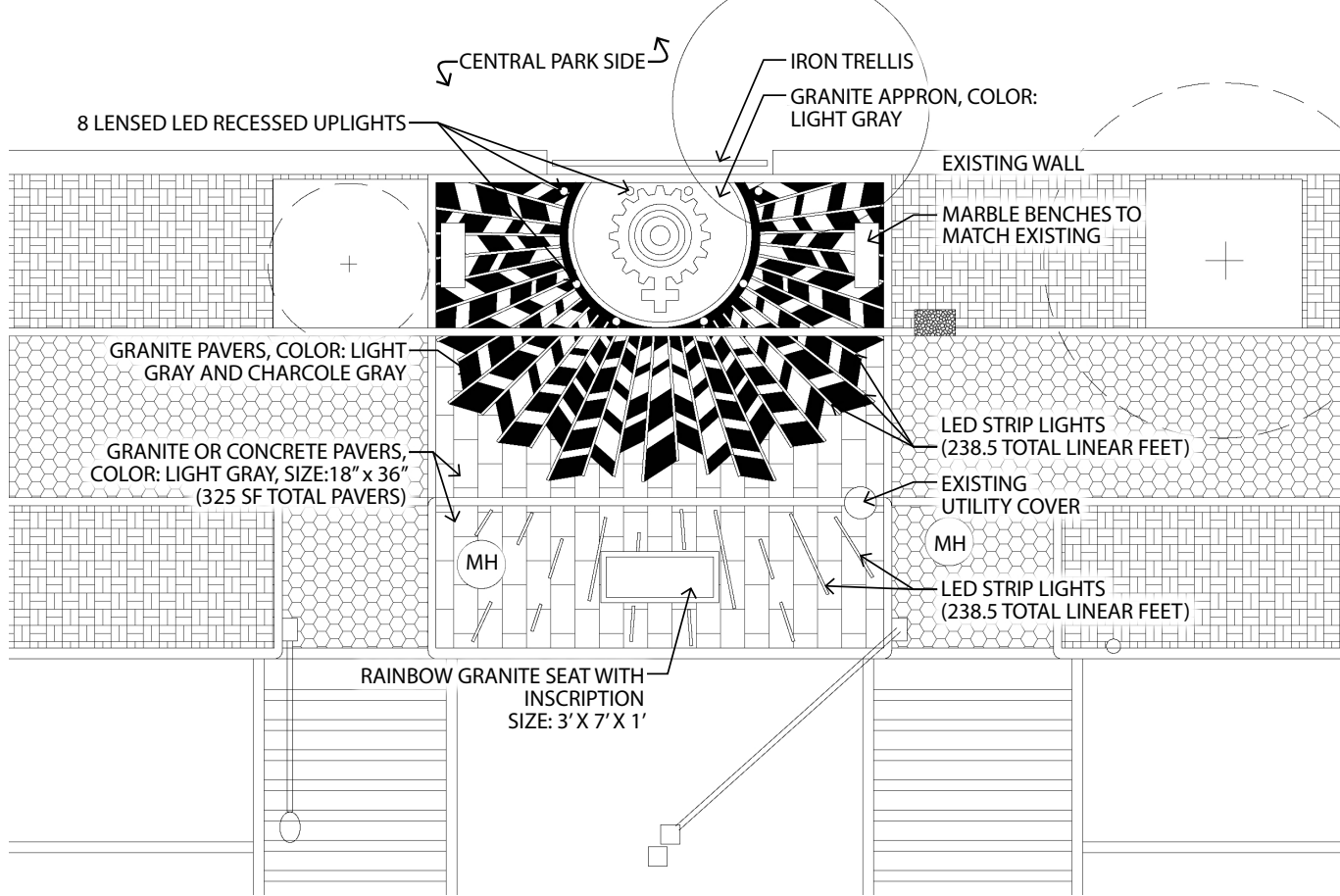
- Mesabi Black
- 5' d x 3" h
- Polish upper surface

Apron 2

- Womens Symbol
- Rainbow granite
- 8.5"w x 10.5'd x 3" h
- Sandblast all surfaces







NOTE:
 GRANITE PAVING TOTAL: 394.8SF
 CONCRETE PAVERS TOTAL: 325 SF
 8 RECESSED LED UPLIGHTS
 RECESSED LED STRIP LIGHTS: 238.5' LF TOTAL



Polished signage and quotes
“Primum non nocere” and “First, do no harm”.

WORK SCHEDULE

Month 1 / October 2019

- Execute Agreement

Month 2-4 / November 2019 - January 2020

- Final Design Approval
- Sculpture Fabrication:
 - Armature
 - Enlargement

Month 5-9 / February-June 2020

- Sculpture Fabrication:
 - Refinement

Month 10 / July 2020

- Fabrication
 - Sculpture Mold-making
 - Gate Fabrication
 - Pedestal / Apron / Stone Paving



Time is of the essence.

Month 11-12 / August-September 2020

- Fabrication
 - Wax Sculpture Refinement
 - Bronze Sculpture Cast
 - Gate Fabrication
 - Pedestal / Apron Fabrication
- Installation
 - Pour Cement Foundation
 - Landscaping
 - Gate installation
 - Ship sculpture and stone to the installer

Month 13 / October 2020

- Installation
 - Paving installation
 - Lighting-Landscape Installation
 - Pedestal /Apron Installation
 - Sculpture preparation
 - Sculpture installation

Thank you.

Photographers

Craig Bailey / Perspective Photo

Jonathan Lewis

Leslie Jean-Bart

Roderick Taylor

Earle Briggs Wilson, Jr.

Pierre Bagwell-Green

Victory

Beyond
Sims