



NORTH SHORE ESPLANADE: ST. GEORGE

Located at the North Shore of Staten Island

22 JUNE 2026
NYCEDC, JACOBS, MNLA

NYC / EDC

JACOBS

MNLA

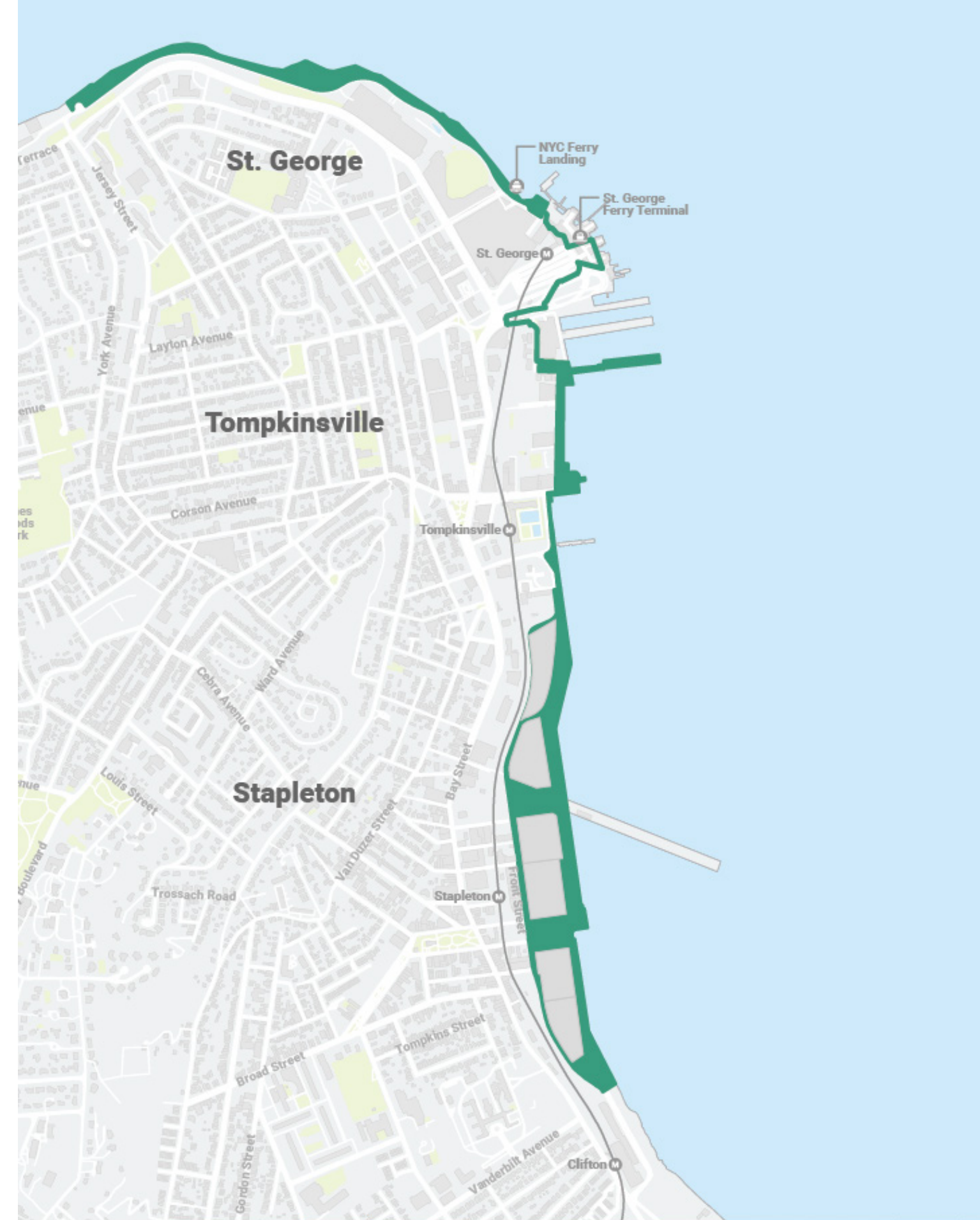


CONTENTS

1. NORTH SHORE ACTION PLAN
2. EXISTING CONDITIONS
3. LANDSCAPE DESIGN
4. PLANTING
5. LANDSCAPE MATERIALS
6. GREEN INFRASTRUCTURE

North Shore Action Plan

- Launched in 2023 with Councilmember Kamillah Hanks
- Action Plan to **re-energize, refocus, and reimagine** efforts to deliver on a **vibrant, mixed-use community** on Staten Island's North Shore
- Focus on delivering **20 acres of continuous waterfront esplanade**
 - Over \$400 million public waterfront investment
 - Up to 2,500 homes
 - 1.4M SF of commercial space
 - 7,500 total jobs
 - \$3.8B economic impact
- All key ingredients for a vibrant mixed-income community



North Shore Action Plan



Progress to Date

- ✓ Broke ground on Mary Cali Dalton Rec Center (February 2024)
- ✓ Broke ground on New Stapleton Waterfront infrastructure and open space (September 2024)
- ✓ Announced Hillside Grove (Jersey St.) developer (December 2024)
- ✓ Started construction on Tompkinsville Esplanade (March 2025)
- ✓ Began design on Pier 1 and North Shore Esplanade: St. George (May 2025)
- ✓ Announced New Stapleton Waterfront B4/B5 developer (May 2025)
- ✓ Held ribbon-cutting for Lighthouse Point Phase 1 (June 2025)
- ✓ Announced new ferry connection to Brooklyn (November 2025)
- ✓ Unveiled new vision for Empire Outlets and the former NY Wheel Site (November 2025)

Feedback from May 2025 Public Workshop

- Based on sticky-note comments, Staten Islanders would like to see the following on or near the North Shore Esplanade: St George:
 - Opportunities to get close to the water
 - Pop-up shops and spaces for small businesses, including souvenirs and concessions
 - Connectivity across the waterfront and upland
 - Interactive art, spaces for dogs, and play areas for kids
 - Universal design principles in action
- The programming options and treatments with the most votes were (in order of preference):
 - Lighting (to increase safety)
 - Chairs and tables
 - Benches
 - Boulders
 - Trees

What would you like to see on the future St. George Esplanade?

Trees



Benches



Bike Racks



Space for Fishing



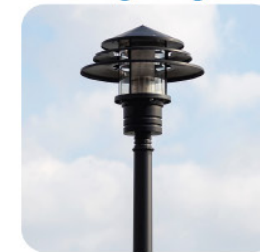
Boulders



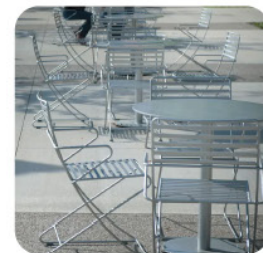
Planters



Lighting



Chairs and Tables



Public Art



Interpretive Signs



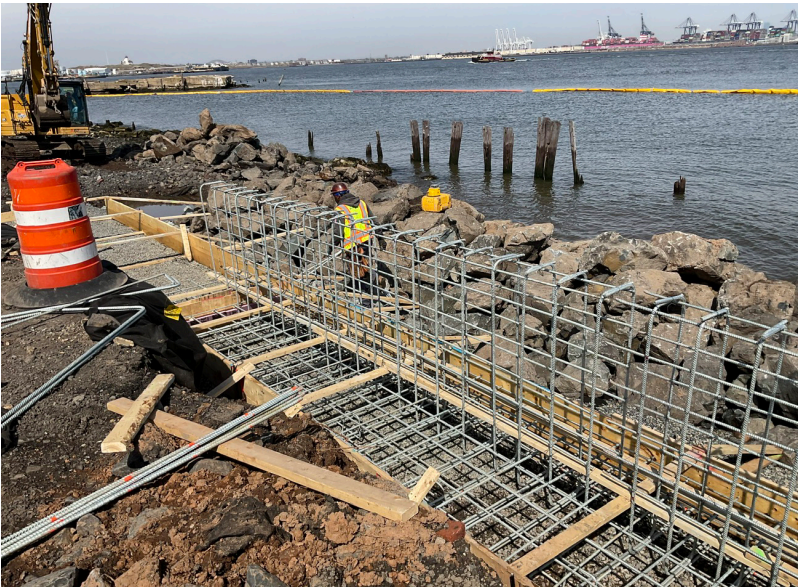
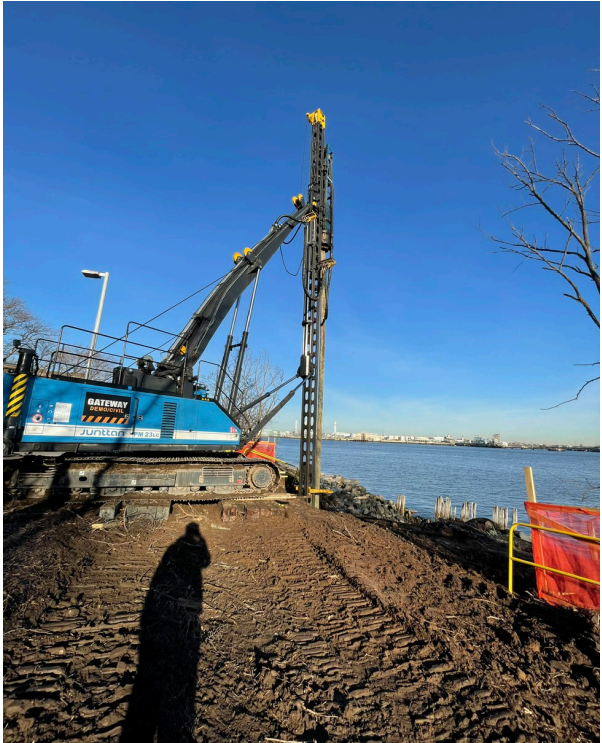
Share your thoughts!

Jacobs NYC/EDC

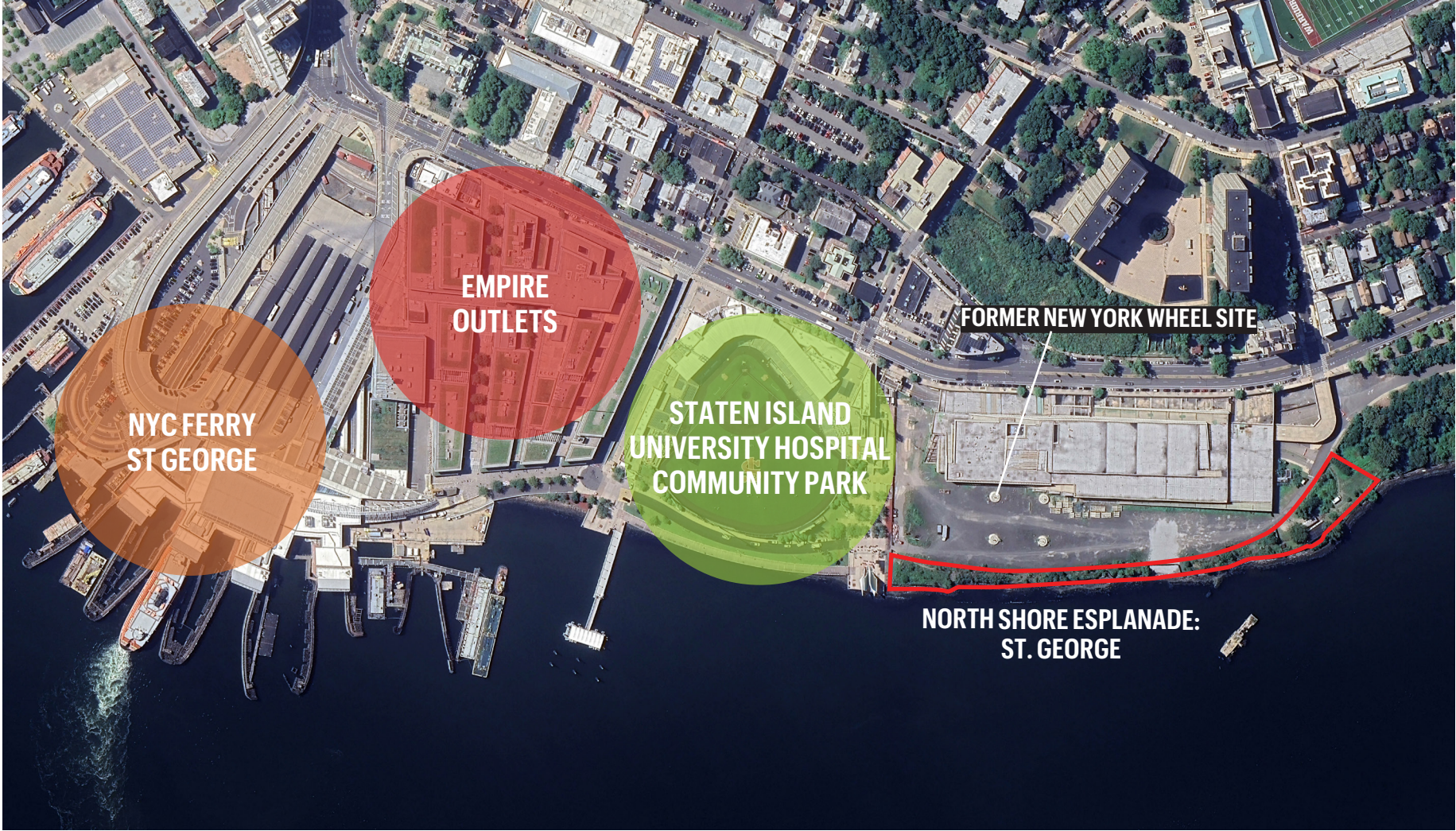
Phase I of North Shore Esplanade: St. George

Bulkhead Repair Project

- **Overview:** FEMA-funded project to repair damaged shoreline conditions at the site following 2010 and 2012 storms; prepare upland area for eventual bike and pedestrian esplanade
- **Status:** Construction started earlier this year; ongoing
- **Next Milestone:** Complete construction by end of 2026

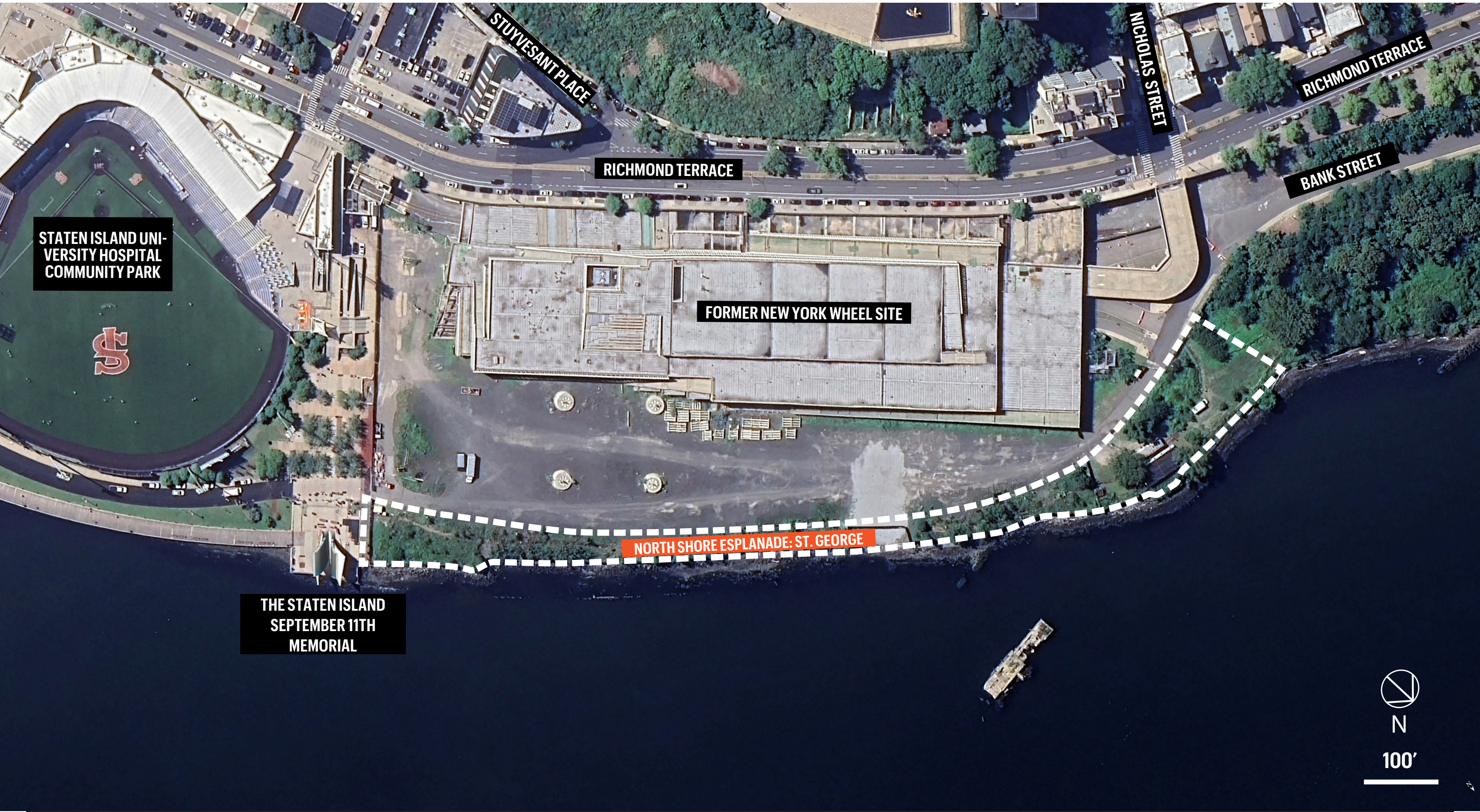


Project Location: City

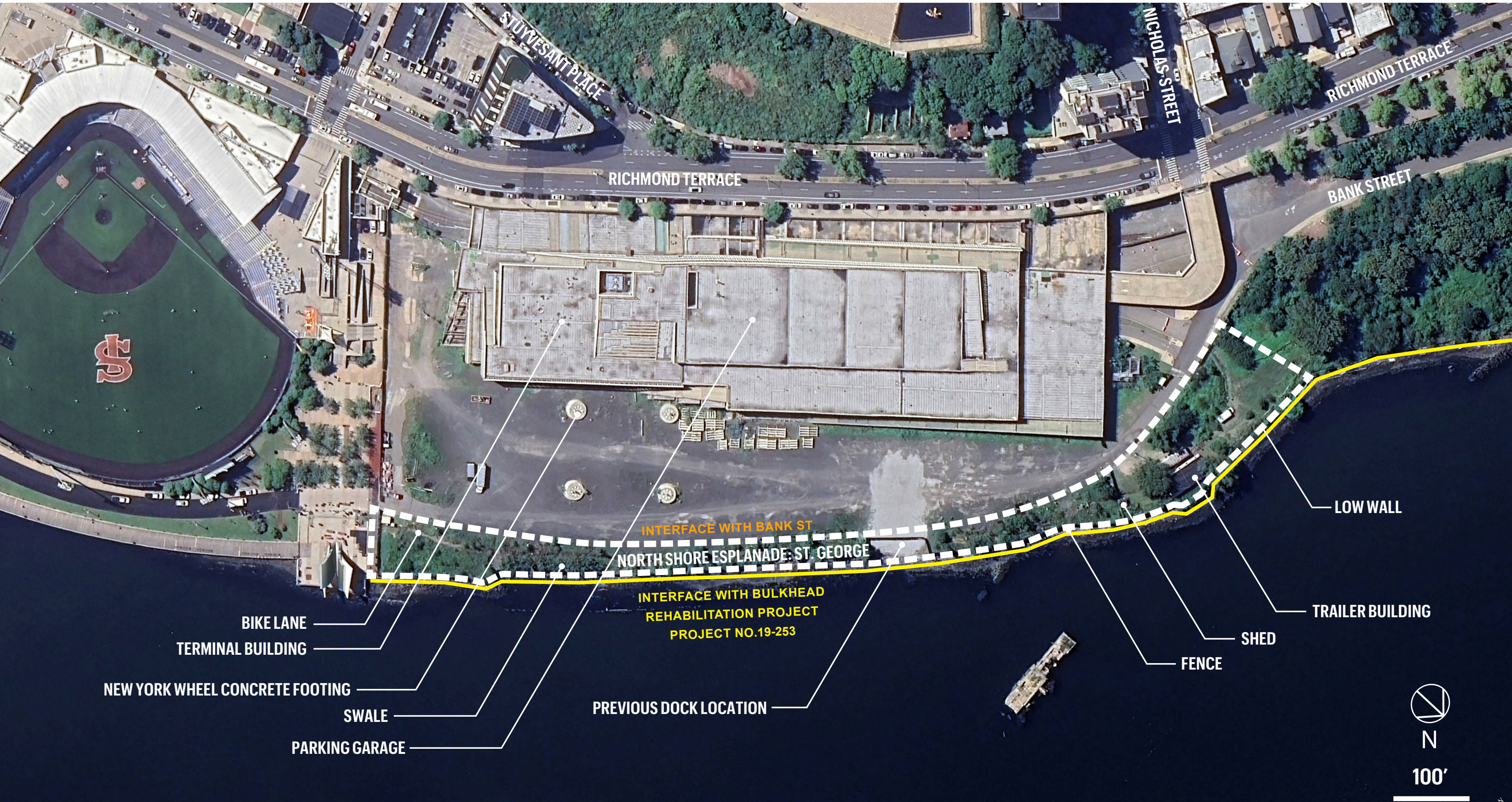


Project Location: Neighborhood

Project Location: Neighborhood



Existing Condition Plan



N

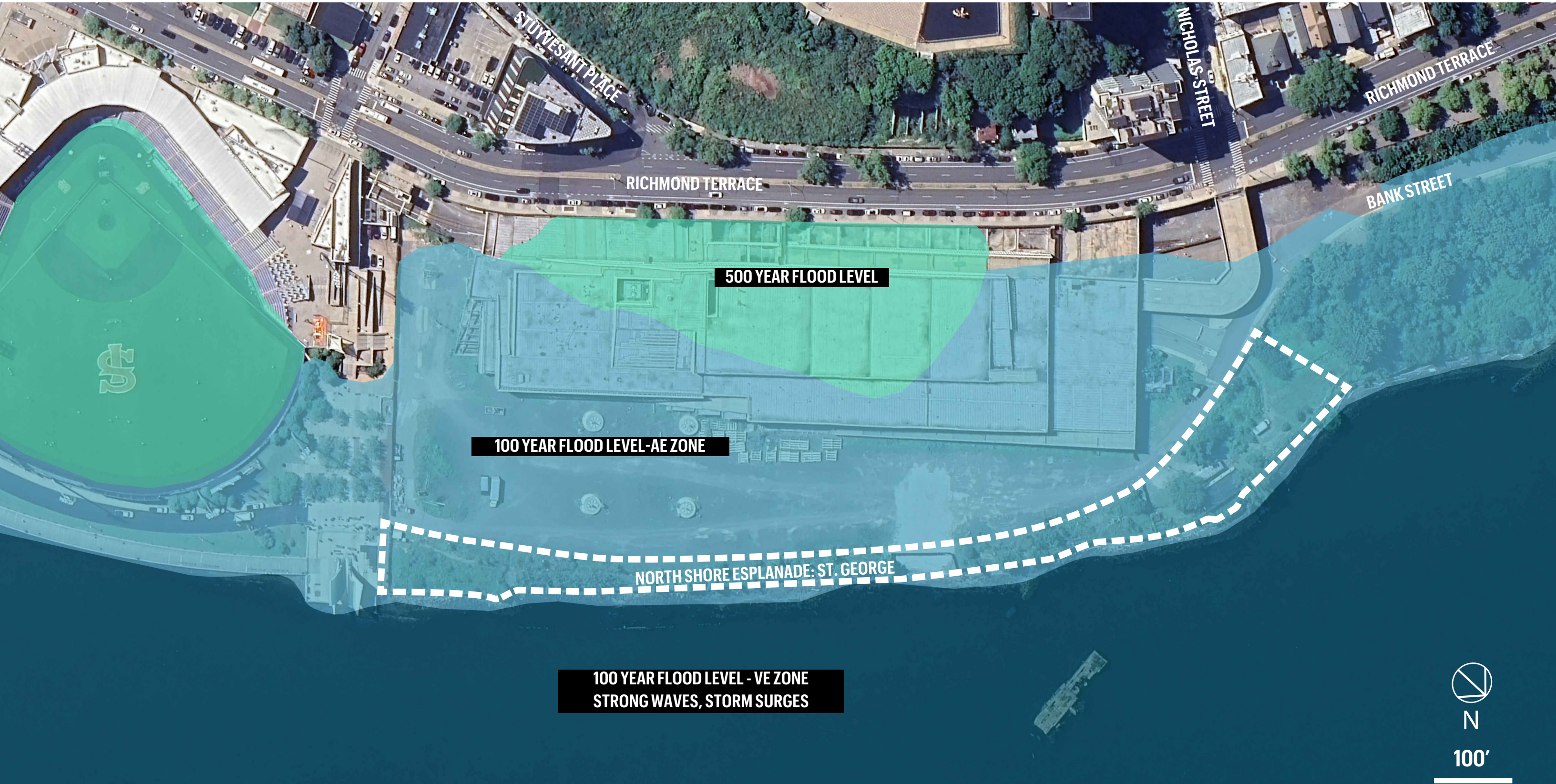
100'

Site History

- Site historically used as railyard
- Used as a parking lot for ferry terminal for many years
- NYCEDC purchased the site in 1998 as part of construction for ballpark
- Land use approvals secured in 2013 to allow for NY Wheel development, amended in 2015
- Construction on NY Wheel began in 2015
- NY Wheel project stopped 2018
- Staten Island North Shore Action Plan released in 2023
- Vision Report for Future of Empire Outlets and Former NY Wheel Site released in 2025



Existing Flood Levels



Existing Condition

Note: The bulkhead is currently being reconstructed. Reference photos shown are from last year and were taken prior to the start of construction



1 LOOKING NORTHWEST ON BANK STREET



2 LOOKING SOUTHEAST ON BANK STREET



3 LOOKING NORTHEAST ON BANK STREET



Note: The bulkhead is currently being reconstructed. Reference photos shown are from last year and were taken prior to the start of construction



4 LOOKING NORTHWEST ON REMNANT BIKE LANE



5 VIEW OF PREVIOUS DOCK LOCATION



6 LOOKING SOUTHEAST ON REMNANT BIKE LANE



Note: The bulkhead is currently being reconstructed. Reference photos shown are from last year and were taken prior to the start of construction



7 LOOKING NORTHWEST ON REMNANT BIKE LANE



8 VIEW OF SHED



9 VIEW OF TRAILER BUILDING



Note: The bulkhead is currently being reconstructed. Reference photos shown are from last year and were taken prior to the start of construction



10 LOOKING EAST ON REMNANT BIKE LANE



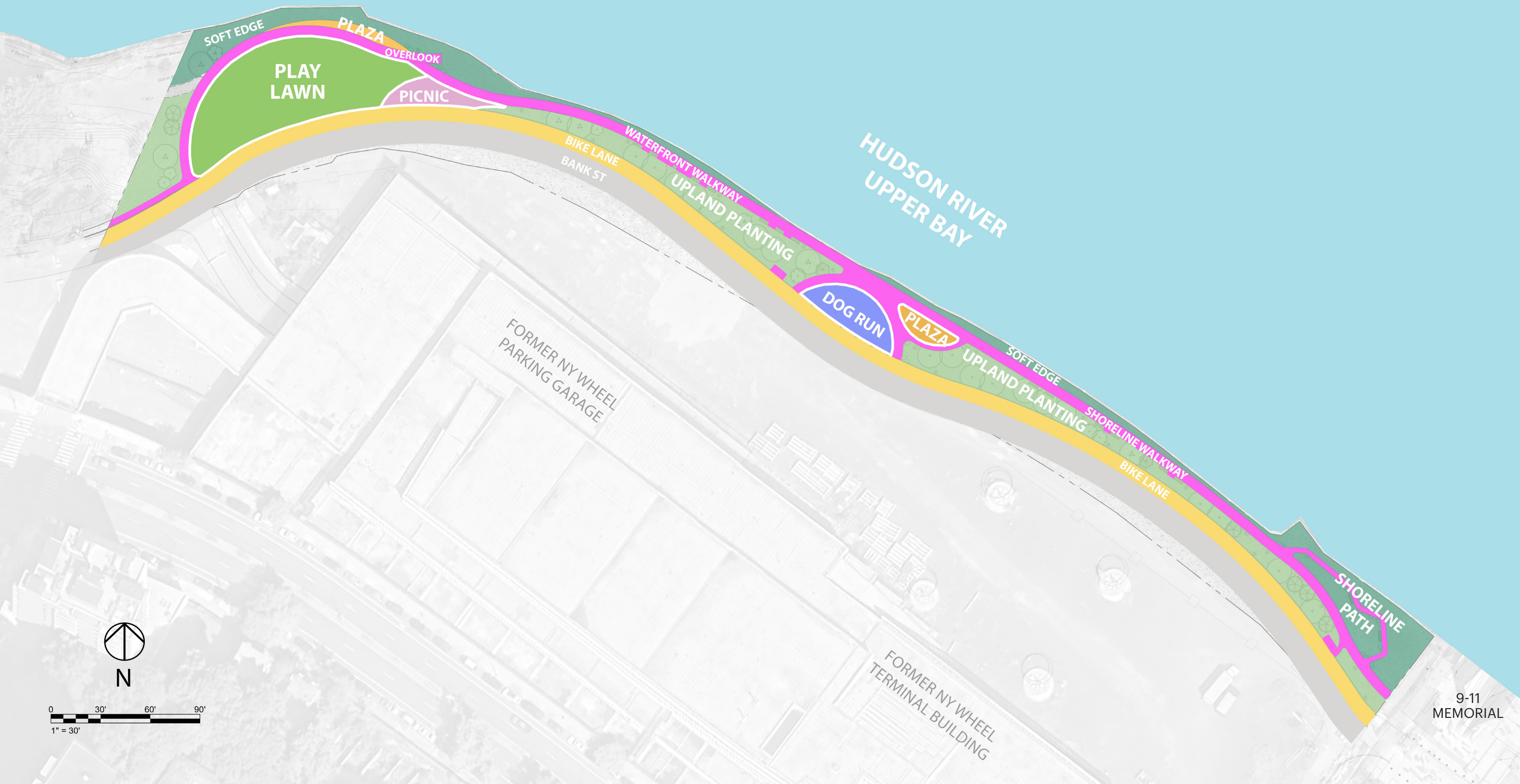
11 LOOKING WEST AT THE WEST END OF THE SITE



12 LOOKING NORTHEAST AT LOW WALL



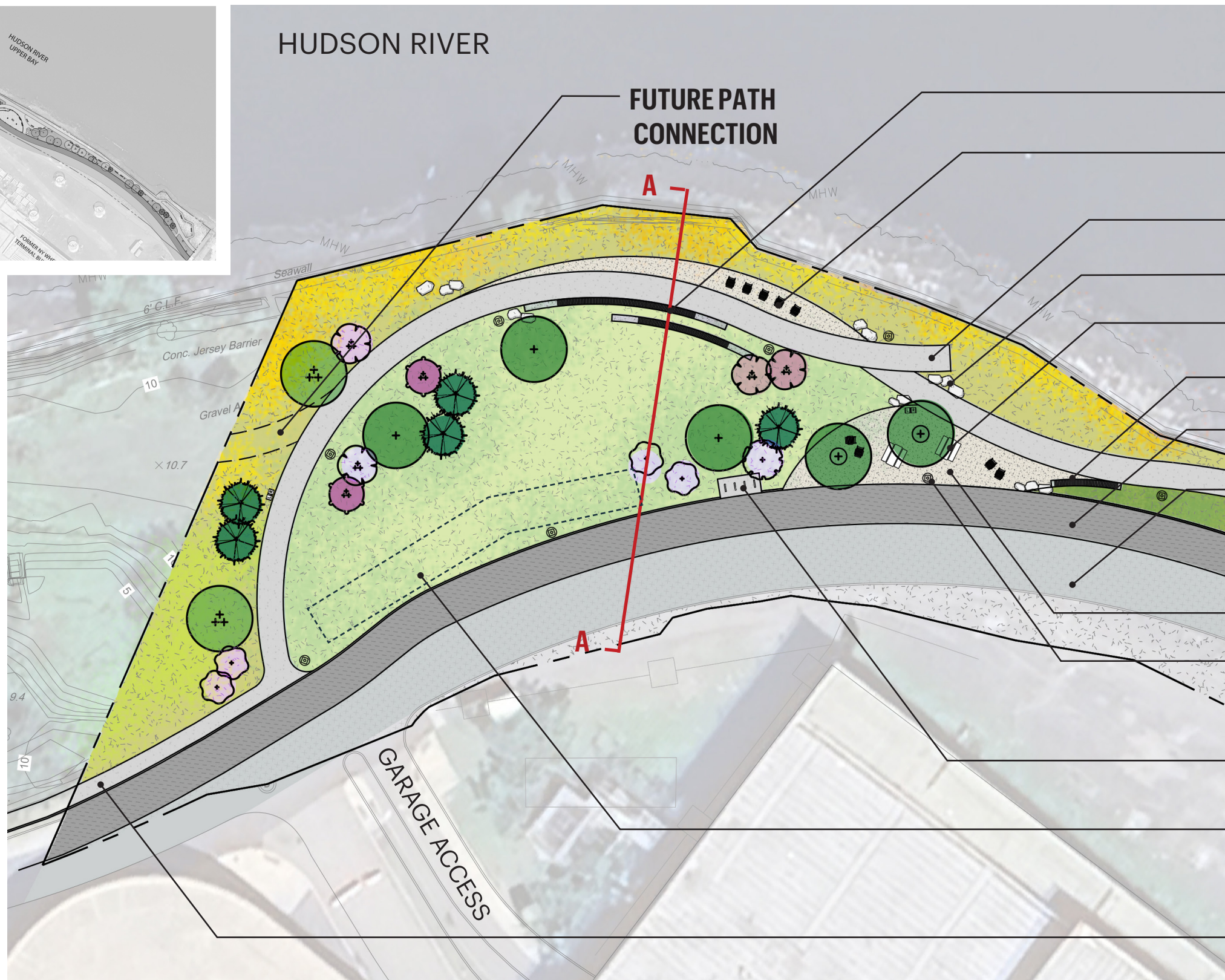
Programming



Overall Site Plan

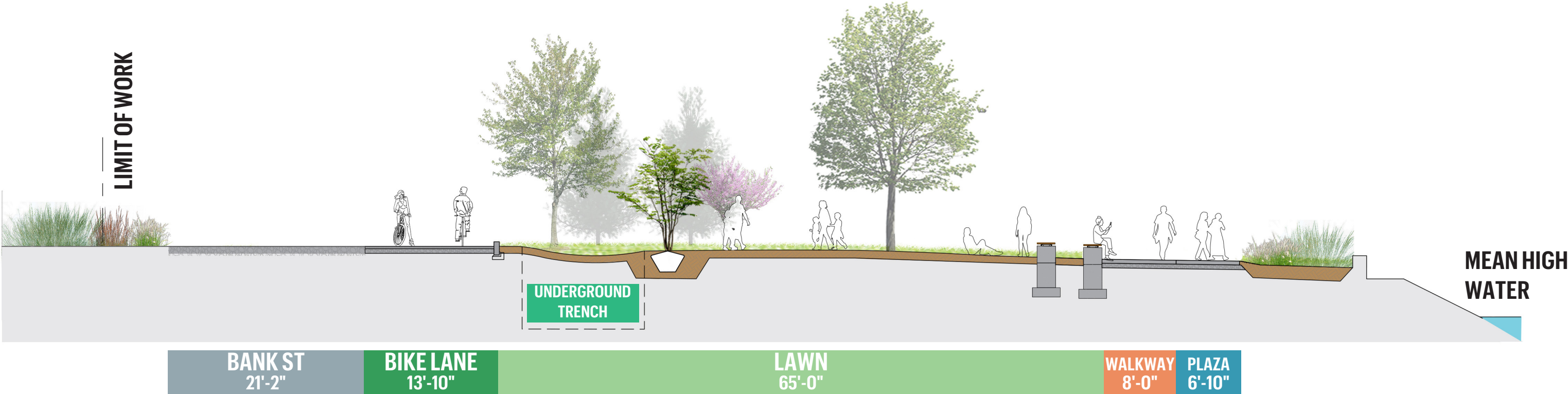


Plan Enlargement 1 - Lawn / Picnic Plaza



- CURVED SEATING BENCH
- LOUNGE CHAIRS
- OVERLOOK
- LANDSCAPE STONE
- PICNIC TABLE/BENCH
- CURVED SEATING BENCH
- BIKE LANE
- BANK ST - NOT IN SCOPE
- PICNIC PLAZA
- SOLAR LIGHT
- BIKE PARKING
- **UNDERGROUND TRENCH**
- CONNECT TO EXISTING SIDEWALK

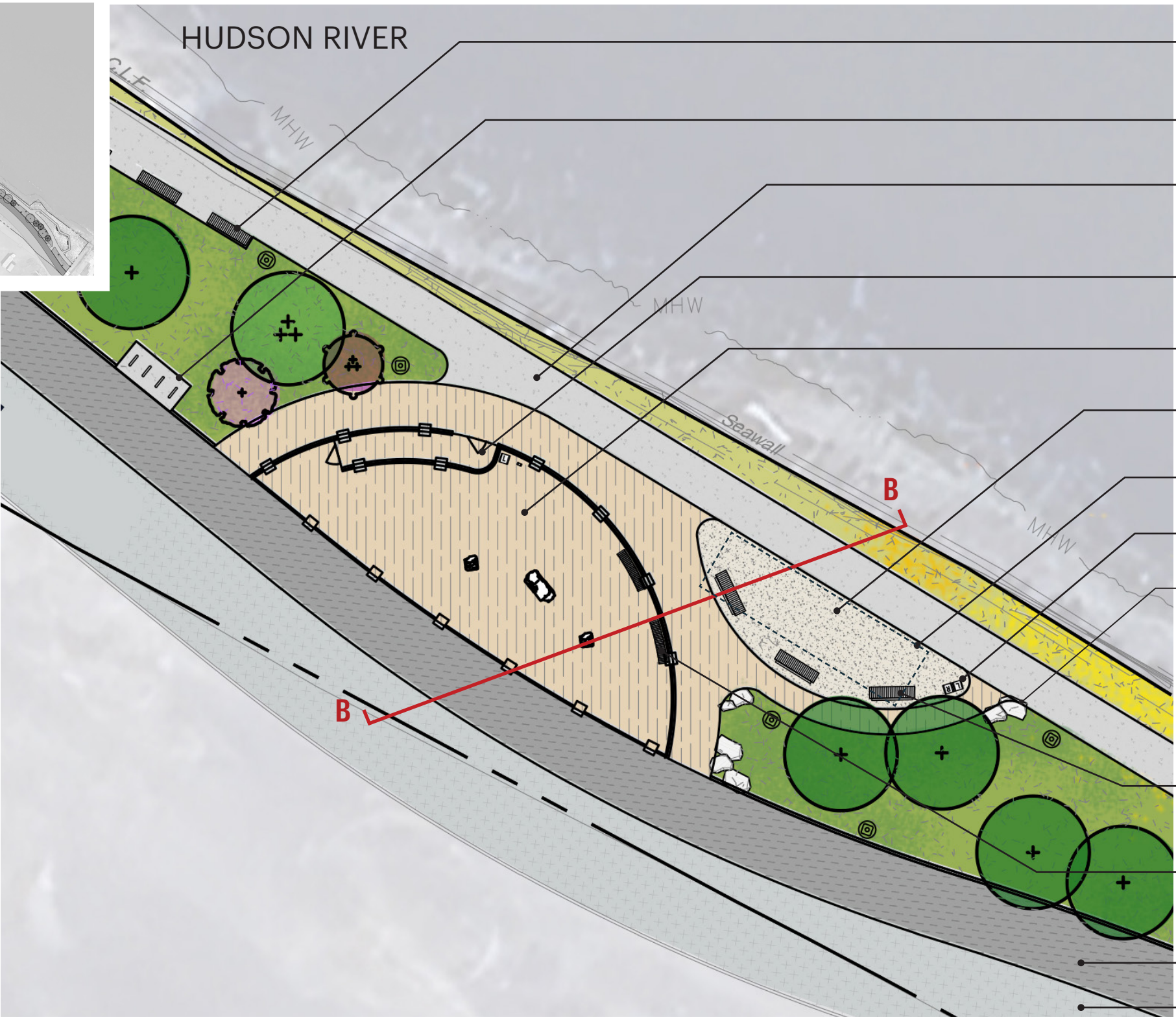
Lawn / Picnic Plaza Sections



SECTION A-A

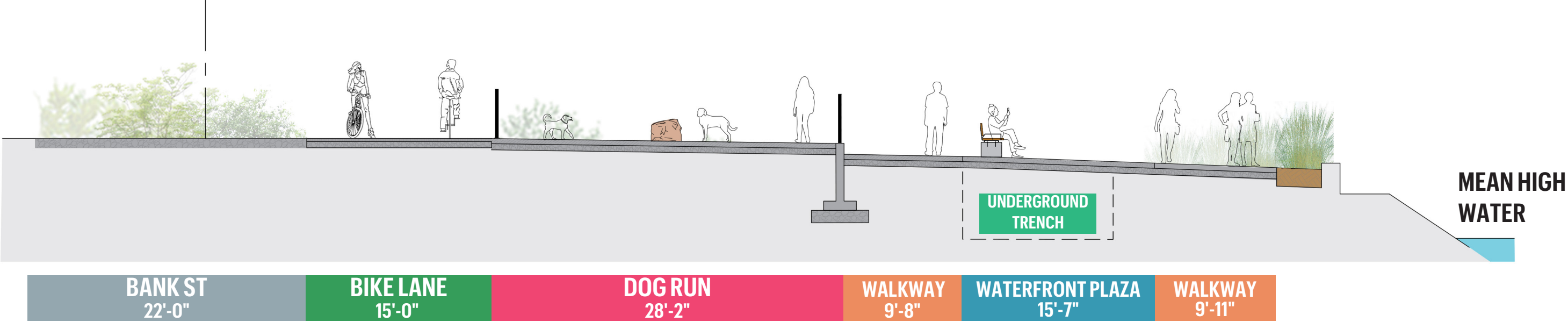


Plan Enlargement 2 - Waterfront Plaza / Dog Run



- BENCH
- BIKE PARKING
- SHORELINE WALKWAY
- DOG RUN GATE / RAMP
- DOG RUN
- WATERFRONT PLAZA
- UNDERGROUND TRENCH**
- LITTER/RECYCLE RECEPTACLES
- LANDSCAPE BOULDER
- BENCH
- DOG RUN BENCH
- BIKE LANE
- BANK ST - NOT IN SCOPE

Waterfront Plaza / Dog Run Sections



SECTION B-B



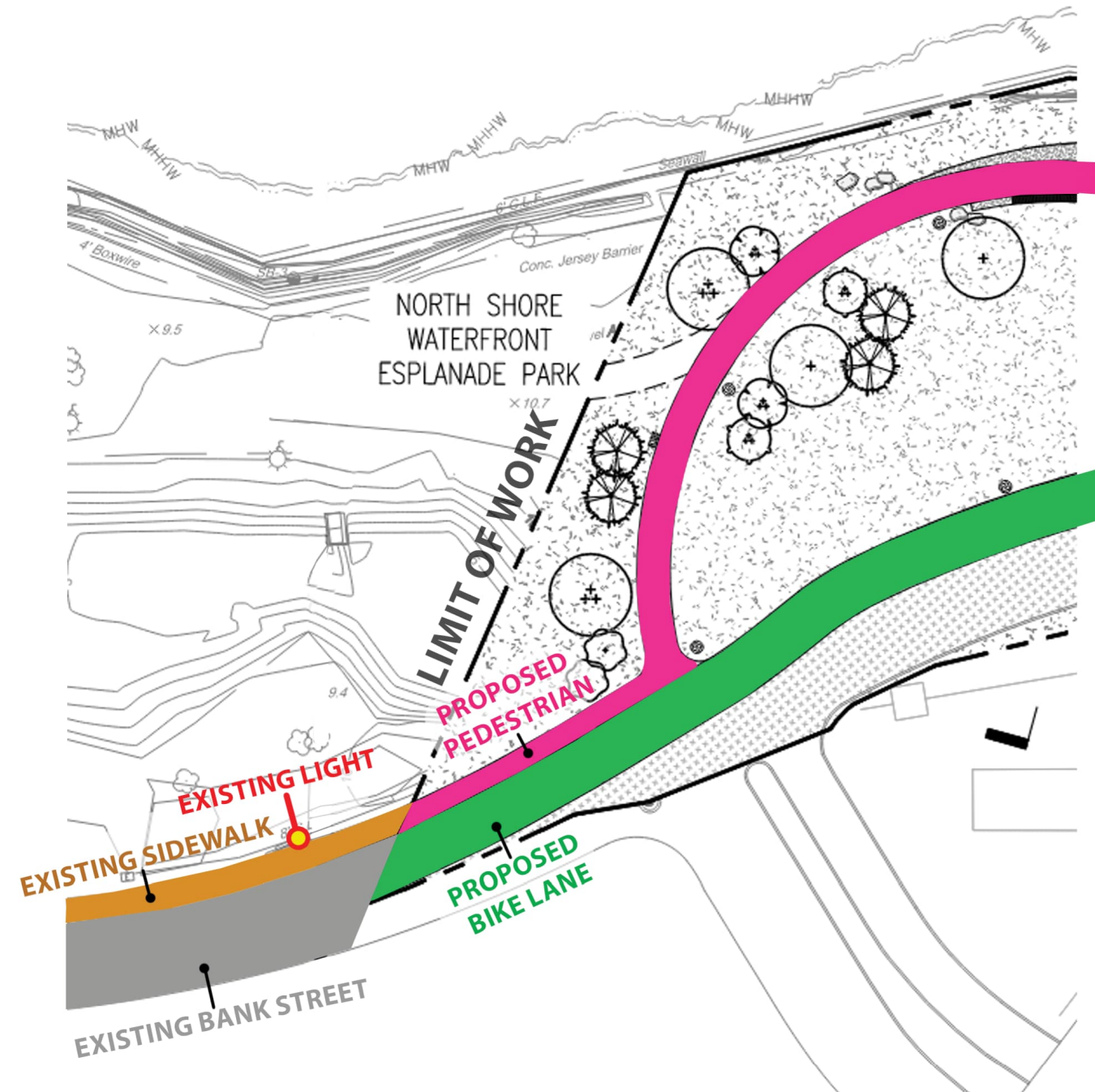
Planting Plan - Typology



Planting Plan - Native + Resilient Planting



Northwest Connection Diagram



Plant Material

**High Soil Salt Tolerance
*Moderate Soil Salt Tolerance

TREES

CANOPY TREE



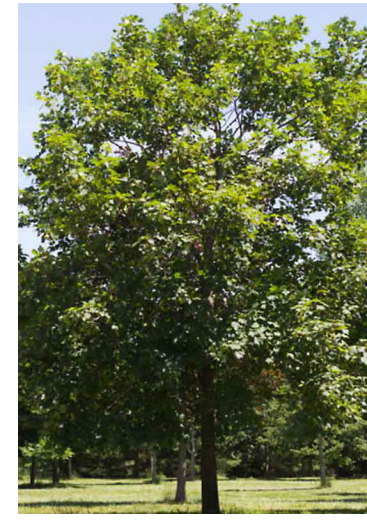
Honey Locust**
Gleditsia triacanthos var *inermis*



Moraine Sweetgum*
Liquidambar styraciflua 'Moraine'



Black Tupelo*
Nyssa sylvatica



Swamp White Oak **
Quercus bicolor



Bur Oak**
Quercus macrocarpa

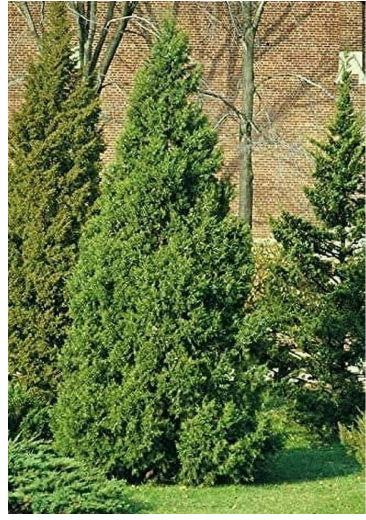


Shingle Oak *
Quercus imbricaria

EVERGREEN TREE

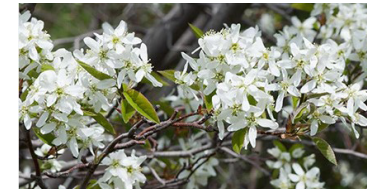


Pitch Pine**
Pinus rigida

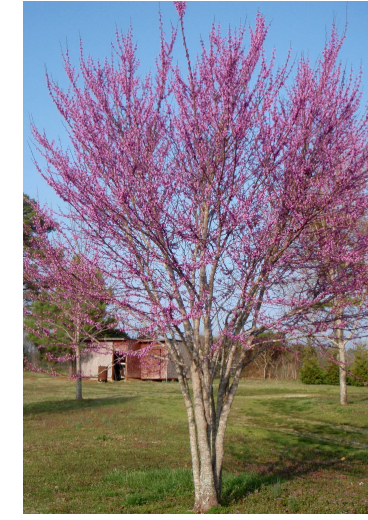


Keteleeri Chinese Juniper**
Juniperus chinensis 'Keteleeri'

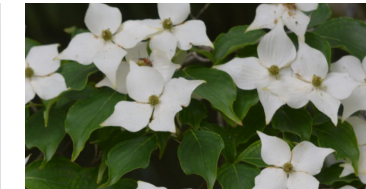
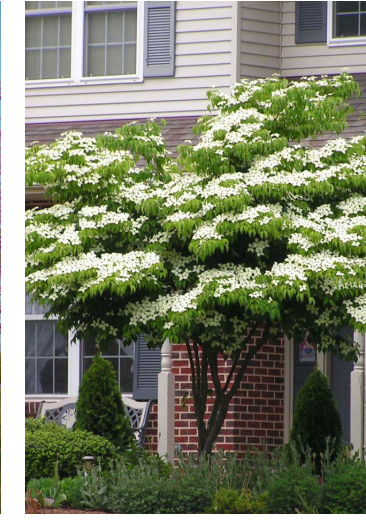
ORNAMENTAL TREE



Serviceberry*
Amelanchier canadensis



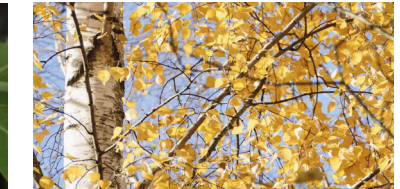
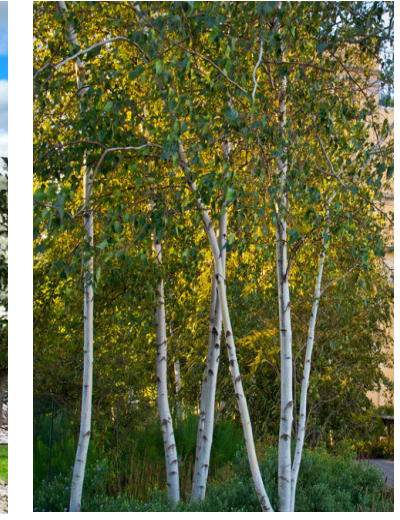
Eastern Redbud*
Cercis canadensis



Kousa Dogwood*
Cornus kousa



Sweetbay Magnolia*
Magnolia virginiana

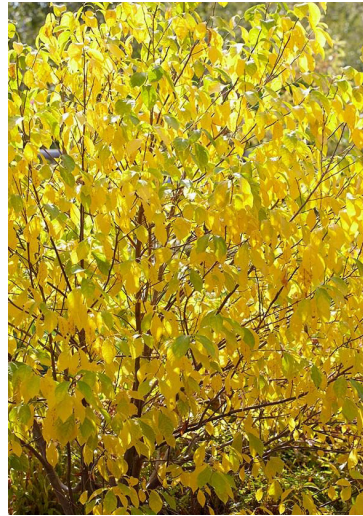
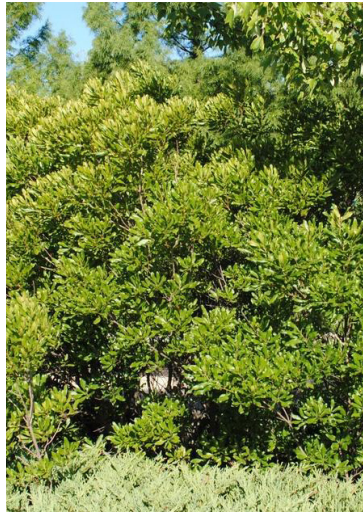
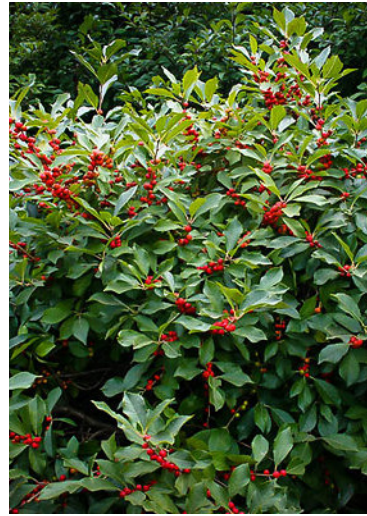


River Birch*
Betula nigra

Plant Material

SHRUBS

**High Soil Salt Tolerance
*Moderate Soil Salt Tolerance



Beach Plum**
Prunus maritima

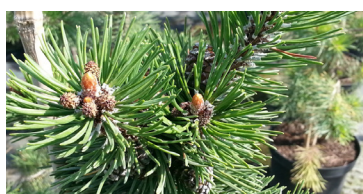
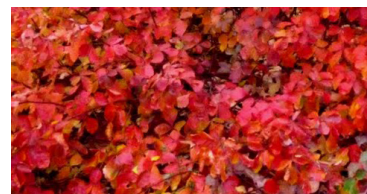
Winterberry*
Ilex verticillata

Northern bayberry**
Myrica pensylvanica

Spicebush*
Lindera benzoin

Hydrangea Tardiva*
Hydrangea paniculata
'Tardiva'

New Jersey tea*
Ceanothus americanus



Virginia Rose**
Rosa virginiana

Fragrant Sumac**
Rhus aromatica 'Gro
Low'

Mugo Pine**
Pinus mugo

Siberian Carpet
Cypress*
Microbiota decussata

Plant Material

**High Soil Salt Tolerance
*Moderate Soil Salt Tolerance

PERENNIALS



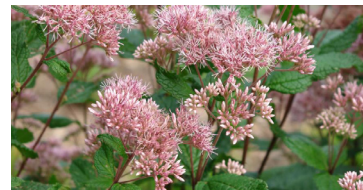
New York Aster *
Symphotrichum novi-belgii



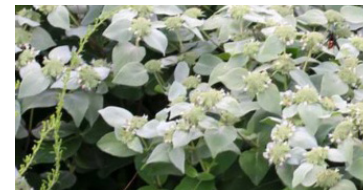
Seaside Goldenrod **
Solidago sempervirens



Wild Geranium
Geranium maculatum



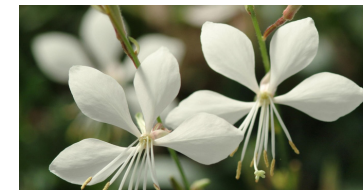
Joe Pye Weed *
Eupatorium dubium
'Little Joe'



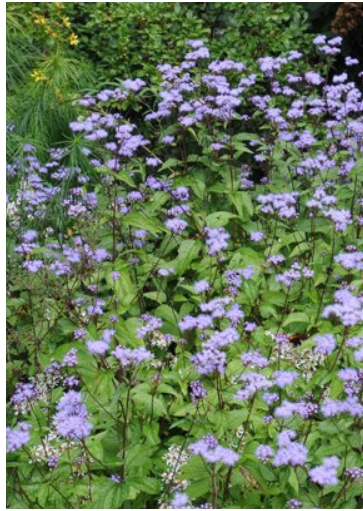
Mountain Mint **
Pycnanthemum muticum



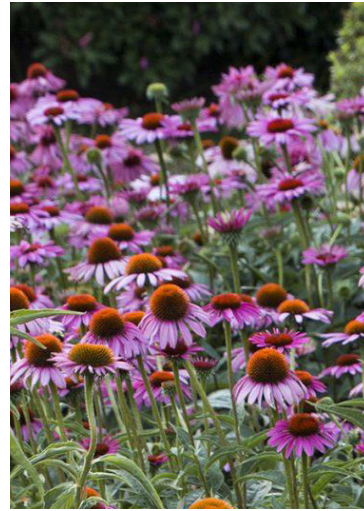
Obedient Plant *
Physostegia virginiana



Ballerina White Compact Gaura *
Gaura lindheimeri 'Baltincite'



Blue Mistflower *
Conoclinium coelestinum



Purple Coneflower **
Echinacea purpurea



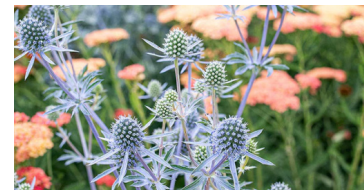
Canadian Anemone *
Anemone canadensis



Big Blue Lily Turf **
Liriope muscari 'Big Blue'



Eastern Bluestar *
Amsonia tabernaemontana



Sea Holly**
Eryngium planum



Common Yarrow **
Achillea millefolium

Plant Material

**High Soil Salt Tolerance
*Moderate Soil Salt Tolerance

GRASSES



North Wind Switchgrass **
Panicum virgatum 'North Wind'



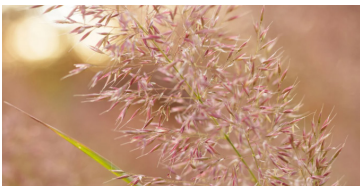
Little Bluestem Schizachyrium**
scoparium 'Standing Ovation'



The Blues Little Bluestem**
Schizachyrium scoparium 'The Blues'



Little Tickler Northern Sea Oats *
Chasmanthium latifolium 'Little tickler'



Eragrostis spectabilis **
Purple Lovegrass



Gray's Sedge *
Carex grayi

Green Infrastructure



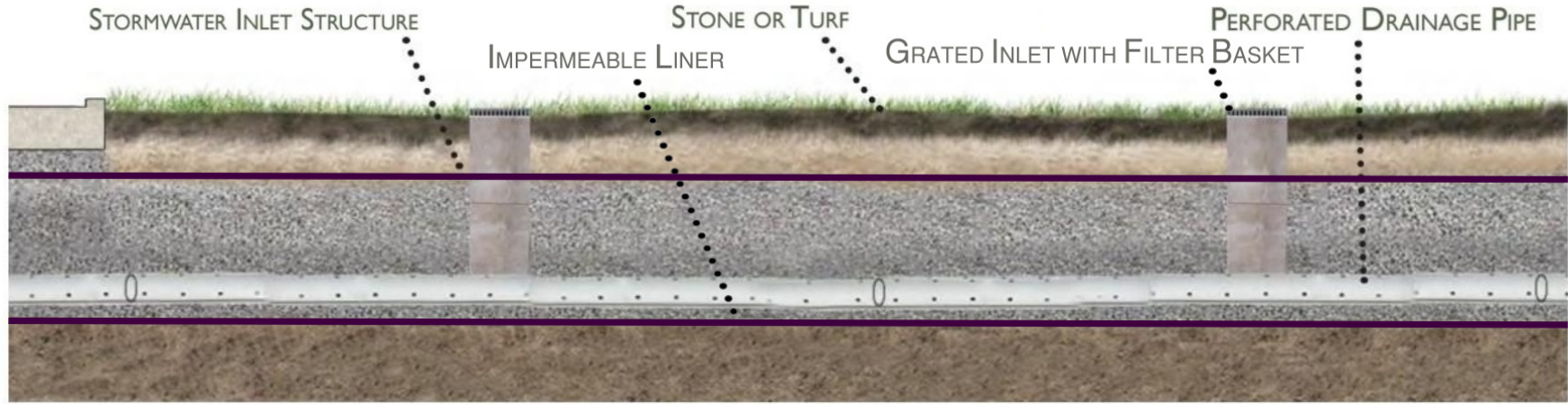
Underground infiltration trench locations



Underground infiltration trench with 2-3 year growth after installation



Underground infiltration trench in a grassed and vegetated area, one year after installation, showing a variety of thriving plants



Underground detention trenches will be lined on all sides with impermeable liner to prevent infiltration into the contaminated soil below, while also providing opportunity for vegetated areas above.

Site Materials



Standard Concrete - Major Pathway



Concrete with Exposed Aggregate - Plazas



Colored Concrete - Dog Run



Landscape Boulder



Asphalt - Bike Lane

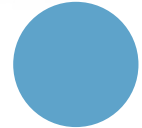


Granite Curb

Site Furnishings



720 Chair
Maglin



Pastel Blue



Ogden Harvest Table and Bench
Maglin



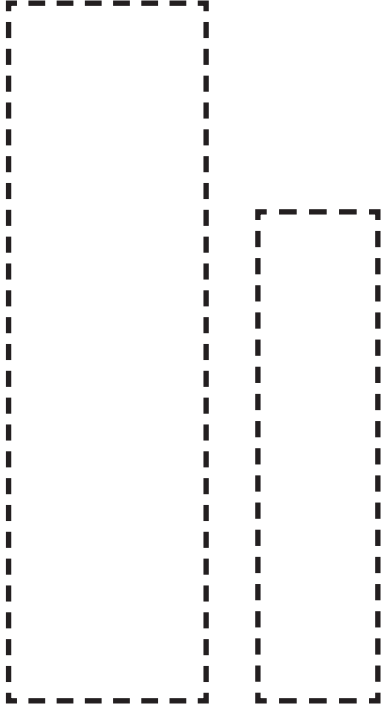
Monoline 36-gal Square Litter Bin
Site Pieces



Graphite Black



Ring Bike Rack
Landscape Forms



Signage
Graphics to be coordinated with Staten
Island Chamber of Commerce

Site Furnishings



Wood Topped Bench - Curved Seating Wall
Custom



Wood Topped Bench
Custom

Site Furnishings - Dog Run



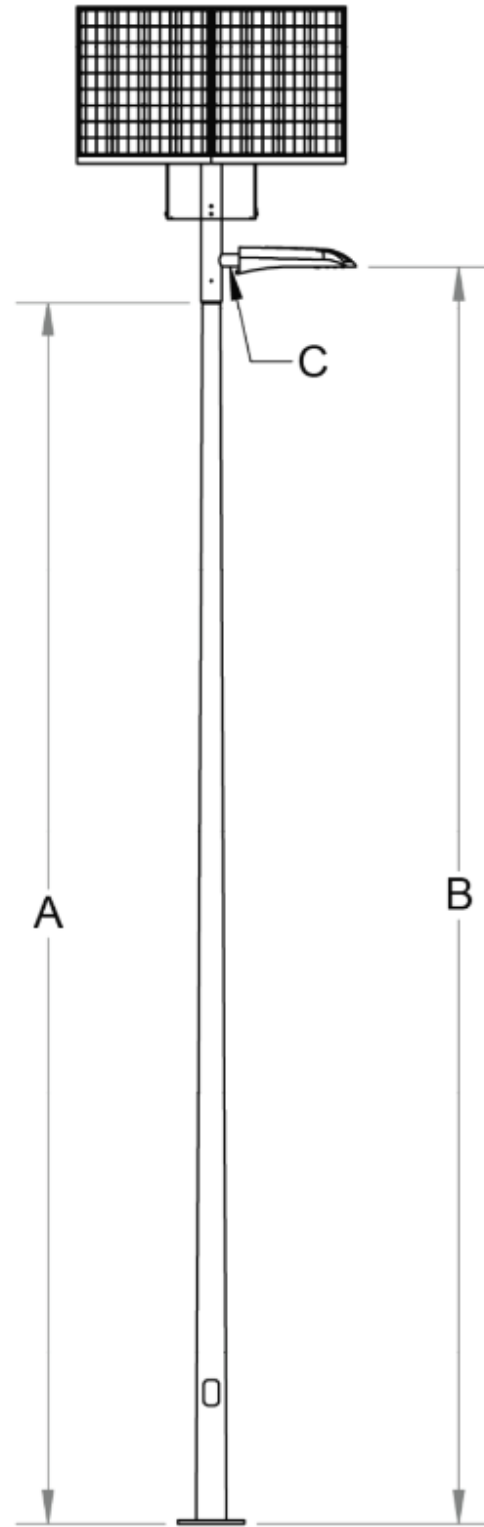
Monoline No. 2 Bag Holder + Waste Bin
Site Pieces



Ogden Benches
Maglin



Dog Run Boulders
Gyms for Dogs



Solar Light
Sol by Sunna Design



D-Series Size 0 LED Area Luminaire



Specifications

EPA:	0.44 ft ² (0.04 m ²)
Length:	26.18" (66.5 cm)
Width:	14.06" (35.7 cm)
Height H1:	2.26" (5.7 cm)
Height H2:	7.46" (18.9 cm)
Weight:	23 lbs (10.4 kg)

