

WEDNESDAY, JULY 17, 2013

DESIGN AWARDS

CITY HALL

Michael R. Bloomberg, Mayor
Patricia E. Harris, First Deputy Mayor
Jackie Snyder, Executive Director

Thirty-First Annual **Awards for Excellence in Design**

Established in 1898 as the Art Commission, New York City's design review agency was renamed by Mayor Michael R. Bloomberg in July 2008 to better reflect its mission. The Design Commission reviews permanent works of art, architecture, and landscape architecture proposed on or over City-owned property.

The Commission comprises 11 members, and includes an architect, landscape architect, painter, and sculptor as well as representatives of the Brooklyn Museum, the Metropolitan Museum of Art, and the New York Public Library. It meets every three weeks in its temporary space at 253 Broadway across the street from its permanent home on the third floor of City Hall, where it has resided since 1914.

In 1983, the Design Commission began recognizing outstanding public projects with its Annual Awards for Excellence in Design. The winners were honored in a ceremony at City Hall that was hosted by Mayor Edward I. Koch.

The Design Commission has continued this annual tradition, selecting winners from among the hundreds of submissions reviewed over the past year. In 2004, the Commission began holding the event in a new or recently renovated building to highlight innovative design.

This year, the Design Awards are back at City Hall in the newly refurbished City Council Chamber, which underwent its first major restoration in more than 50 years as part of the City Hall rehabilitation.

Rehabilitation of City Hall and the Council Chamber

Constructed from 1803 to 1812, New York's City Hall is one of the oldest continuously used city halls in the nation. The result of a competition held in 1802, it is one of the finest architectural achievements of the period. The winning team of Joseph François Mangin (fl. 1794-1818) and John McComb, Jr. (1763-1853) designed the building in the Federal style with French influences. It is a designated landmark, and its soaring rotunda is an interior landmark.

Originally two courtrooms, the Council Chamber was reconfigured in 1897 under the direction of architect John H. Duncan, who also installed the wood paneling, the horseshoe-shaped gallery, the ceiling's decorative plaster, and the bas-reliefs. In 1903, the ceiling was completed with murals by Taber Sears that celebrate greater New York at the turn of the 20th century.

In 2010, the Bloomberg Administration launched a large-scale project to stabilize City Hall's deteriorating infrastructure and preserve the historic building, utilizing sustainable design features to bring its life safety and mechanical systems up to 21st-century standards. In addition to structural repairs, this project included the installation of a new fire safety system, an energy-efficient heating and cooling system, new electrical service, and a 100 KW solid oxide fuel cell.

In partnership with the Mayor's Fund to Advance New York City and the Municipal Art Society, private support was raised to restore the historic Taber Sears murals and the Thomas Jefferson statue by Pierre-Jean David D'Angers, as well as decorative elements and historic finishes. In addition, artifacts found in the archeological excavation conducted in association with the construction were documented and preserved.

A project of the Department of Design and Construction with Beyer Blinder Belle Architects & Planners; Chrysalis Archaeology; Fine Art Conservation; Hill International; Jablonski Building Conservation; Lakhani & Jordan Engineers; Ken Moser, Conservator; Ernest Neuman Studios; Olin Conservation; Robert Silman Associates; Rolf Jensen & Associates; SBLD Studio; Strauss Painting; and YR&G

AWARD RECIPIENTS



Far Rockaway Community Library

1637 Central Avenue, Queens

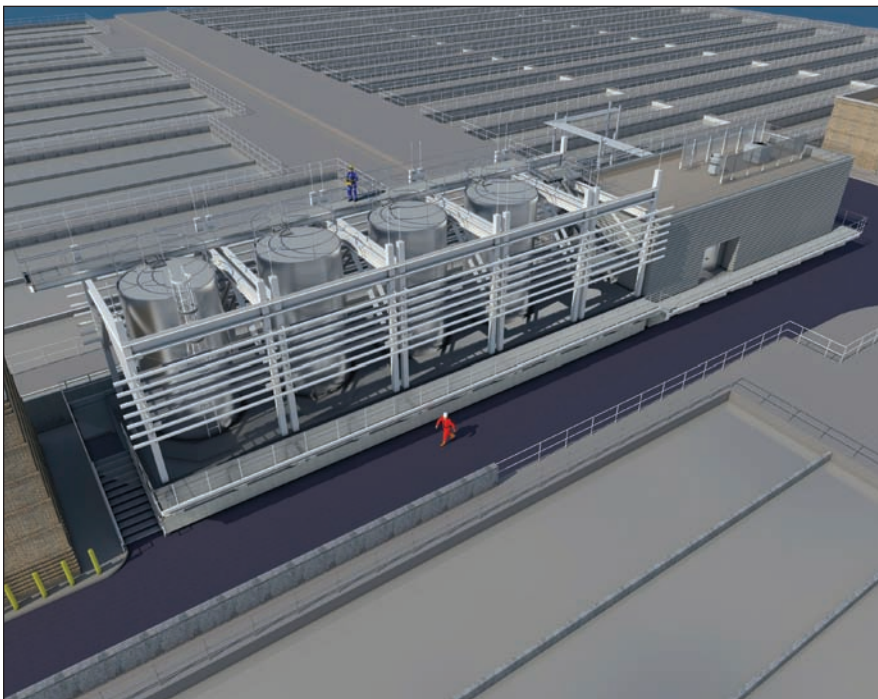
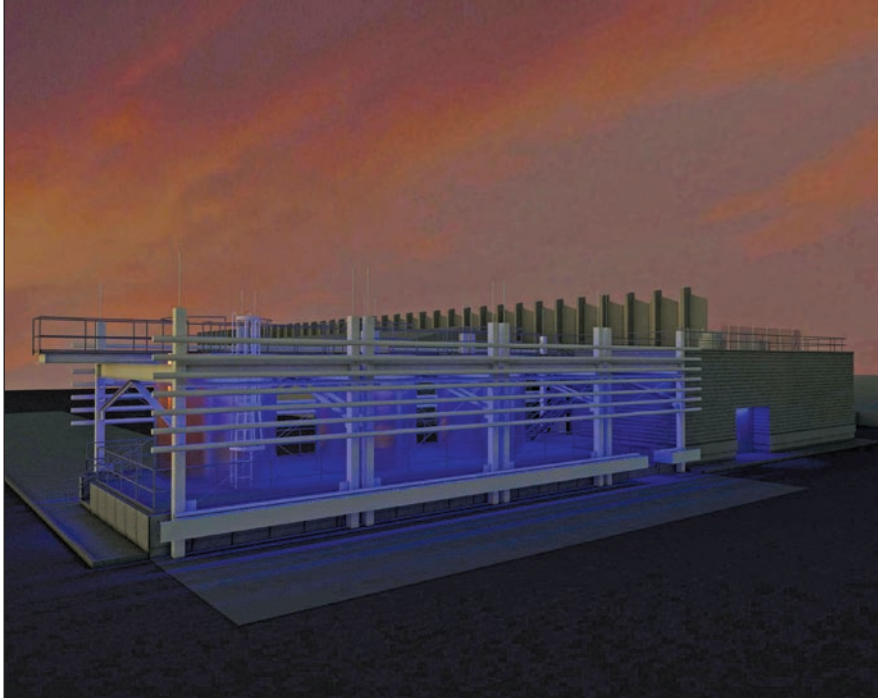
A Project of the Department of Design and Construction and Queens Library

Snøhetta

Since it was established in 1904, the Far Rockaway Community Library has been a well-loved community resource, counting among its users three Nobel Prize winners. The redesigned library doubles the size of the current facility and provides space for adult and children's reading rooms, a large teen center, and a community meeting room. The library has a simple form with two defining negative spaces: a recessed corner entrance that draws visitors in and a central atrium that allows natural light throughout the interior. The glass façade features a tinted and textured gradient to evoke the sunset over the Rockaway coastline. In a neighborhood ravaged by Hurricane Sandy, this library is a beacon of community solidarity and promise.

Design Team

Snøhetta: Craig Dykers, Principal; Nathan McRae, Project Manager; Carrie Tsang, Designer; Nick Koster, Architect;
Robert Silman Associates: Nat Oppenheimer, Principal; Pat Arnett, Associate; Jason Tipold, Senior Engineer; **Altieri Sebor Weiber:** Michael A. Freliche, Principal; Michael V. Miracolo, Project Manager; Robert Cancian, Project Engineer; Jeffrey M. Leavenworth, Project Engineer; David B. Lussier, Project Engineer; **Atelier Ten:** Nico Kienzl, Director; Emilie Hagen, Associate; Junko Nakagawa, Associate; Michael Esposito, Technical; **Department of Design and Construction:** David J. Burney FAIA, Commissioner; David A. Resnick AIA, Deputy Commissioner; Frank D'Arpino, Associate Commissioner; Eric Boorstyn AIA LEED AP, Associate Commissioner; Sergio Silveira RA, Assistant Commissioner; Faith Rose RA, Senior Design Liaison & Design Commission Liaison; Ron Tagliagambe RA, Director of Architecture; J Cohen PE, Program Director; Frank Kugler RA, Deputy Director of Architecture; Gregory Pertsov RA, Deputy Program Director; Grace Han, Design Liaison; Rene Tablante, Project Manager; Sueyan Lee Kim RA, A+E Team Leader; **Queens Library:** Thomas Galante, President & Chief Executive Officer; Peter Magnani AIA, Senior Vice President for Capital and Strategic Planning; Frank Genese AIA Vice President for Capital and Facilities Management; Kwok Yim PE, Director of Capital Program Management & Design Commission Liaison; Richard Tobin, Senior Project Manager; Jennifer Manley, Director of Government & Community Affairs



Carbon Addition Facilities at the Wards Island, Jamaica, and Bowery Bay Wastewater Treatment Plants

Manhattan and Queens

A Project of the Department of Environmental Protection

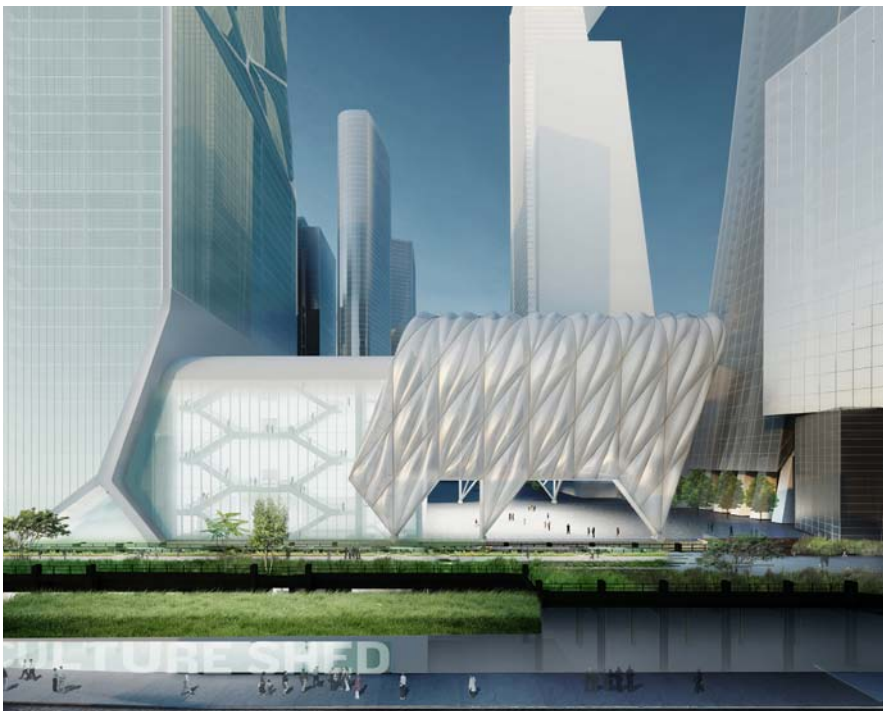
Hazen and Sawyer

CH2M HILL

These three facilities store and supply carbon to aid in the removal of nitrogen from wastewater in order to improve the water quality of the East River, Jamaica Bay, and Long Island Sound. Employing a kit-of-parts, the design provides a consistent aesthetic palette that is customized to respond to the unique conditions and context of each site. The stainless steel storage tanks are set within a painted steel framework and wrapped with screens that double as racks for loose pipes. The tanks are flanked by a corrugated metal enclosure that houses pumps and an electrical room. At night the structures are lit with blue LEDs, lending these critical pieces of infrastructure an ethereal quality.

Design Team

Hazen and Sawyer: Charlie Hocking, PE, President; Paul Saurer PE, Vice President; Benjamin Roach PE, Vice President; Michael Stallone AIA LEED AP, Senior Associate; JC Eder PE, Senior Associate; Benjamin Levin PE, Senior Associate; Emanuel Psaltakis PE, Senior Associate; Tommaso Nardone AIA LEED AP, Associate; David Fong RA, Associate; Anthony Murphy PE, Senior Principal Engineer; Hafize Bavatekin Baysan RA LEED AP, Principal Architect; Sandro Kashvili, Assistant Architect; Jeannette Martinez, Assistant Architect; Shawn Roeser, Senior Designer; George Chee, Senior Principal Designer; **CH2M HILL:** Rick Hirsekorn, Senior Vice President; Dan Lynch PE, Vice President; Tom Sadick PE, Vice President; Gary Weil PE, Vice President; Alan Smith PE, Water Engineer; Mark Supplee PE, Water Engineer; Amy Gao, PE, Water Engineer; Melissa Motyl PE, Water Engineer; **Department of Environmental Protection:** Carter Strickland, Commissioner; Kathryn Mallon, Deputy Commissioner; Kevin Donnelly PE, Assistant Commissioner; Kenneth Moriarty PE, Acting Assistant Commissioner; Matthew Osit PE, Portfolio Manager; Sue Liu PE, Accountable Manager; Robert Cuevas RA, Chief of Architectural Section; John Harrington RA, Level II Architect; Chris Gallegos, Architectural Designer; Natalia Perez, Assistant Engineer; Howard Freidman, Design Commission Liaison



Culture Shed

Hudson Yards, 545 West 30th Street, Manhattan

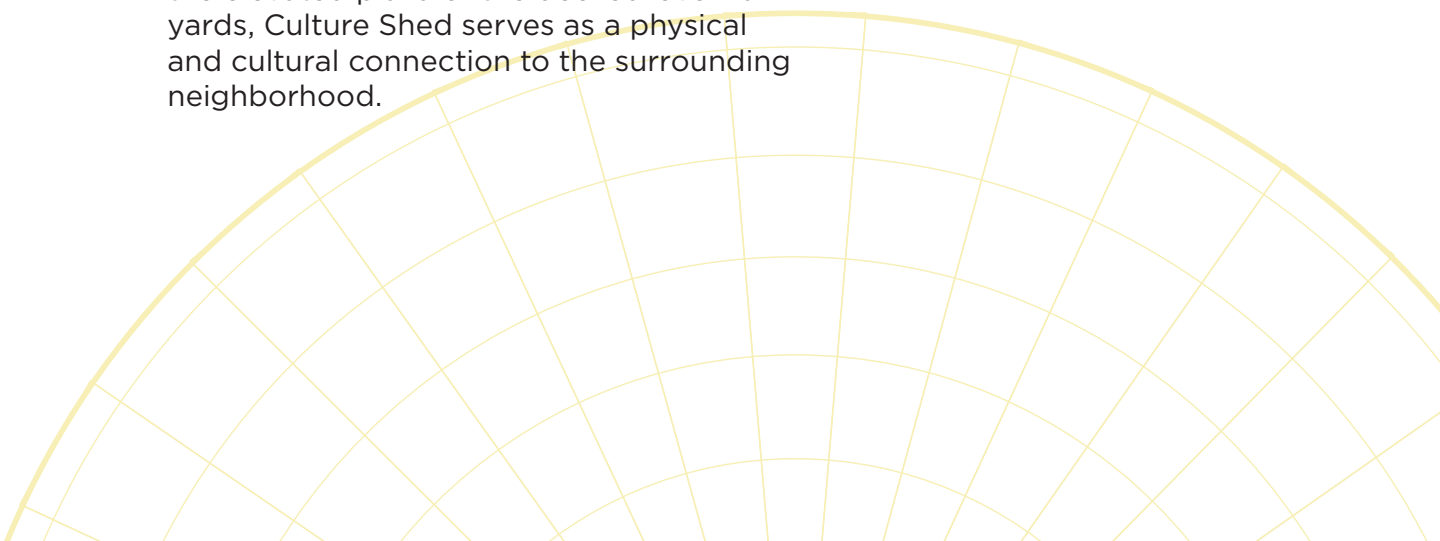
A Project of the Department of Cultural Affairs

Diller Scofidio + Renfro
Rockwell Group

Culture Shed is a flexible visual and performing arts space abutting the High Line at the southern edge of Hudson Yards. The facility features five stories of column-free gallery and event space enveloped by a deployable ETFE (Ethylene Tetrafluoroethylene) shed structure. When extended using gantry technology along tracks embedded in the adjacent plaza, the shed forms a vast open-air pavilion capable of hosting a variety of programming. With lobbies at street level on 30th Street and on the elevated plaza of the decked-over rail yards, Culture Shed serves as a physical and cultural connection to the surrounding neighborhood.

Design Team

Diller Scofidio + Renfro: Elizabeth Diller, Principal-in-Charge; Robert Katchur, Project Leader; David Allin, Senior Associate; John Newman, Senior Associate; Neil Thelen, Associate; David Chacon, Senior Architect; Annie Coombs, Designer; Jason Dannenbring, Designer; Andrew Domnitz, Designer; Michael Hundsnurscher, Designer; Chris Kupski, Designer; Matt Ostrow, Designer; Mike Robitz, Designer; **Rockwell Group:** David Rockwell, President; Peter Himmelstein, Studio Leader; Julia Choi, Team Member; Evan Tribus, Designer; Thornton Tomasetti: Thomas Scarangelo, Principal-in-Charge; Eli Gottlieb, Principal; Thomas Duffy, Senior Vice President; Scott Lomax, Vice President; William Cooch, Engineer; **Hardesty & Hanover:** David Tuckman, Principal Associate; Jaros Baum & Bolles: Mark Torre, Principal-in-Charge/Electrical Engineer; Augie DiGiacomo, Principal Engineer; Richard Weindel, Project Mechanical Engineer; Jennifer Arcario, Project Electrical Engineer; Philip Parisi Jr., Project Plumbing Engineer; **Department of Cultural Affairs:** Kate D. Levin, Commissioner; Margaret Morton, Deputy Commissioner; Andrew Burmeister, Assistant Commissioner for Capital Projects; Stephanie Brown, Assistant to the Commissioner; David Bryant, Capital Project Manager & Design Commission Liaison





New York Aquarium's Ocean Wonders: Sharks!

Surf Avenue at West Eighth Street, Brooklyn

A Project of the Department of Cultural Affairs, the Department of Parks & Recreation, and the Wildlife Conservation Society

WCS Exhibition and Graphic Arts Department

The Portico Group

Edelman Sultan Knox Wood/Architects

Doyle Partners

Ned Kahn Studios

With a capacity of 500,000 gallons of water, Ocean Wonders: Sharks! is home to more than 115 species of marine animals, including sharks, rays, sea turtles, and schooling fish. A ramp encircles the building, offering ocean views as visitors climb from the aquarium's interior plaza, over the boardwalk, and up to the rooftop café and classroom. The wonder and thrill of the aquarium's exhibit are brought to the surface with a façade of 32,000 suspended kinetic aluminum tiles. Set in motion by the slightest sea breeze, these tiles ripple and swell like the ocean's surface and shimmer like a darting school of fish.

Design Team

WCSExhibition and Graphic Arts Department: Susan A. Chin FAIA, Vice President of Planning & Design and Chief Architect; Paul A. Tapogna RA LEED, Assistant Director Design Management & Project Manager; Shane LeClair, Creative Director, Exhibits; **The Portico Group:** Keith McClintock ASLA, Principal; Charles Mayes AIA, Principal; Megan Nielsen Hegstad AIA, Associate Principal; William Hacker AAIA, Associate Principal; Jake Dumler ASLA, Senior Associate, Landscape Architect; **Edelman Sultan Knox Wood/Architects:** Randy Wood AIA, Partner; Cary Trochesset AIA, Project Manager; **Doyle Partners:** Stephen Doyle, Creative Director; **Ned Kahn Studios:** Ned Kahn, Environmental Artist; **MLA Engineering:** Michael Leonard PE, Structural Engineer; Debbie Jung PE, Associate; **Focus Lighting:** Brett Andersen, Principal; Christine Hope, Senior Designer; **Department of Cultural Affairs:** Kate D. Levin, Commissioner; Margaret Morton, Deputy Commissioner; Andrew Burmeister, Assistant Commissioner, Capital Projects; David Bryant, Project Manager & Design Commission Liaison; **Department of Parks & Recreation:** Veronica M. White, Commissioner; Thérèse Braddick, Deputy Commissioner for Capital Projects; Kevin Jeffrey, Brooklyn Borough Commissioner; Nancy Prince RLA, Deputy Chief of Design; Kevin Quinn, RA Director of Architecture; Amie Uhrynowski, Design Commission Liaison; **Wildlife Conservation Society:** Ward W. Woods, Chair of the Board; Cristian Samper, President & Chief Executive Officer; Patricia Calabrese, Executive Vice President for Administration & Chief Financial Officer; John F. Calvelli, Executive Vice President of Public Affairs; James J. Breheny, Executive Vice President, Zoos and Aquarium & General Director; Jon Forrest Dohlin, Vice President, Director, New York Aquarium



Shakespeare Machine

The Public Theater, 425 Lafayette Street, Manhattan

A Project of the Department of Cultural Affairs' Percent for Art Program, the Department of Design and Construction, and the Public Theater

Ben Rubin

Suspended from the ceiling of the Public Theater's newly renovated lobby, Ben Rubin's sculpture celebrates the intricate lexicon of Shakespeare's work. The piece consists of 37 electronic display panels, each dedicated to a specific play, that radiate out from a central oculus. Fueled by computer algorithms that identify syntactic commonalities, the piece displays excerpts from each play in white LEDs. In a search for bodily nouns, *Much Ado About Nothing* offers "his queasy stomach" and *Richard II* puts forth "my displeased eye." With its endlessly variable selection of lingual patterns, *Shakespeare Machine* is a mesmerizing artwork that truly takes center stage.

Design Team

The Office for Creative Research: Ben Rubin, Artist; Michele Gorman, Architectural Designer; Ian Ardouin-Fumat, Software Developer and Designer; Jer Thorp, Software Developer and Designer; **Columbia University:** Mark Hansen, Director, David and Helen Gurley Brown Institute for Media Innovation & Professor of Journalism; **Perfection Electricks:** Marty Chafkin, Principal; **Parallel Development:** Will Pickering, Principal; **Guy Nordenson and Associates:** Rebecca Laberrenne, Associate Partner; Carl Fosholt, Engineer; **Ennead Architects:** Duncan Hazard, Partner-in-Charge; James Polshek, Design Counsel; Stephen Chu, Project Designer; Damyanti Radheshwar, Project Manager; Kevin Baxter, Project Architect; Edward Christian, Architect; Gregory Smith, Architect; **Pentagram Design:** Paula Scher, Partner; Drew Freeman, former Associate Partner; **Radiant Consulting:** Noah Matalon, President; **Westerman Construction Company:** Lloyd Westerman, Principal; Daniel Wrzesinski, Senior Project Manager; William Carr, Site Supervisor; **Department of Cultural Affairs:** Kate D. Levin, Commissioner; Margaret Morton, Deputy Commissioner; Andrew Burmeister, Assistant Commissioner for Capital Projects; Sara Reisman, Percent for Art Director & Design Commission Liaison; Reina Shibata, Percent for Art Deputy Director; **Department of Design and Construction:** David J. Burney FAIA, Commissioner; David A. Resnick AIA, Deputy Commissioner; Eric Boorstyn, Associate Commissioner; Michael Nastasi, Assistant Commissioner; Victoria Milne, Director, Creative Services; Faith Rose RA, Senior Design Liaison & Design Commission Liaison; Konstantinos Kritharis, Program Director; Steven Wong, Pass Throughs Program Director; Xenia Diente, Percent for Art Liaison; Hilda Schneider Epstein, Senior Project Manager; Roberto Petrucelli, Deputy Program Director; Lili Khansari, A&E Team Leader; **The Public Theater:** Oskar Eustis, Artistic Director; Patrick Willingham, Executive Director; Adrienne Dobsoviets, Director of Capital Projects & Government Relations; David Loewy, Assistant Director of Capital Projects; Ruth Sternberg, Production Executive; Ishmael Figueroa, Operations and Facilities Manager



Heineken Red Star Café

Billie Jean King National Tennis Center, Flushing Meadows Corona Park, Queens

A Project of the Department of Parks & Recreation
and the USTA National Tennis Center

Sage and Coombe Architects Rossetti Associates

Centrally located within the tennis center, the Heineken Red Star Café establishes a new aesthetic direction for the future campus revitalization projects. The building's dynamic form is defined by a composite aluminum structure folded to create both the deck and canopy of an open-air café set atop a glass-enclosed retail space. The supergraphics applied to the façades and glass railings boldly announce the concession, and a stair wrapping the corner of the structure welcomes visitors upstairs to enjoy shade, refreshment, and views of the surrounding tennis courts. Game, set, match!

Design Team

Sage and Coombe Architects: Jennifer Sage AIA LEED AP, Principal; Peter Coombe AIA LEED AP, Principal; Allen Slamic, Project Designer; Andrew Kao, Senior Designer; **Rossetti Architects:** Matt Rossetti, President & Lead Designer; Deena Fox, Associate & Project Manager; Patricia Dickman, Project Architect; Matt Hathorne, Senior Designer; Dave Andruccioli, Architect; Doug McLean, Architect; WSP Cantor Seinuk: Dr. Ahmad Rahimian, President; **de Bruin Engineering:** Robert W. de Bruin, Principal; **RGR Landscape:** Geoffrey Roesch, Principal; Sid Burke, Senior Associate; **Syska Hennessey Group:** Keith Fitzpatrick, Senior Vice President; **USTA National Tennis Center:** Daniel Zausner, Chief Operating Officer; Charles Jettmar, Director Capital Projects & Engineering; Michael Carrasquillo, Director Finance & Administration; **Department of Parks & Recreation:** Veronica M. White, Commissioner; Thérèse Braddick, Deputy Commissioner for Capital Projects; Robert Garafola, Deputy Commissioner for Management and Budget; Elizabeth Smith, Assistant Commissioner for Revenue and Marketing; Dorothy Lewandowski, Queens Borough Commissioner; Jonna Carmona-Graf, Chief of Capital Program Management; Nancy Prince RLA, Deputy Chief of Design; Kevin Quinn RA, Director of Architecture; Amie Uhrynowski, Design Commission Liaison; Meira Berkower, Director of Planning/ Capital Projects; Janice Melnick, Flushing Meadows Corona Park Administrator; Charles Kloth, Director of Concessions; Sandra Huber, Chief of Staff for Revenue and Marketing & Design Commission Liaison; Anthony Macari, Revenue Architect; Christopher Farnum, former Assistant Revenue Architect



City Point, Phase II

Willoughby Street, Flatbush Avenue, Fleet Street,
and Albee Square, Brooklyn

A Project of the Economic Development Corporation,
Acadia Realty Trust, Washington Square Partners, BFC Partners,
the Brodsky Organization, and Field Real Estate Holdings

CookFox Architects

SLCE Architects

Lee Weintraub Landscape Architecture

The second phase of this 1.8-million-square-foot mixed-use development includes the extension of the retail base and construction of two residential towers, one market-rate and the other affordable. Building on the success of the first phase, the retail façades are clad in the same white and pale grey terra cotta, but feature a modular expression evocative of the shipping containers used in the temporary DeKalb Market. Each tower has a distinct façade treatment that is brought to grade to contribute to a lively and varied street wall, and the large lofted market hall provides a bustling mid-block connection. Crowned with an expansive landscaped rooftop, Phase II of City Point promises a bright and sustainable future for Downtown Brooklyn.

Design Team

CookFox: Richard Cook FAIA, Partner; Mark Rusitzky, Senior Associate; **SLCE:** Robert J. Laudenschlager AIA, Partner; Jeff Mongno AIA, Project Manager; **Lee Weintraub Landscape Architecture:** Lee Weintraub, Principal; Giovanni Diaz, Project Manager; **Pentagram:** Michael Gerricke, Partner; Don Bilodeau, Associate Partner; **DeSimone Consulting Engineers:** Stephen V. DeSimone PE, President; Borys Hayda PE, Managing Principal; Joseph Savalli PE, Associate Principal; **Cosentini Associates:** Michael W. Maybaum PE, Executive Vice President; Eduardo J. Martinez PE, Senior Vice President; **Economic Development Corporation:** Seth Pinsky, President; Josh Gelfman, former Senior Vice President; Mark Spector, Vice President; Gale Rothstein, Vice President Design Review & Design Commission Liaison; **Acadia Realty Trust:** Kenneth Bernstein, President & Chief Executive Officer; Christopher Conlon, Executive Vice President & Chief Operating Officer; Frank Bonura AIA LEED AP, Vice President of Design; **Washington Square Partners:** Paul Travis, Managing Partner; Aron Gooblar, Vice President; **BFC Partners:** Brandon Baron, Partner; Donald Capoccia, Partner; Joseph Ferrara, Partner; Winthrop Wharton, Vice President; **The Brodsky Organization:** J. Dean Amro, Partner; Daniel Brodsky, Partner; Thomas Brodsky, Partner; **Field Real Estate Holdings:** Michael Field

SPECIAL RECOGNITION FOR GREEN INFRASTRUCTURE

These projects showcase the use of natural systems, such as soils, plants, and habitat, to improve New York City’s water quality, lessen the heat-island effect, and beautify the urban landscape.



Right of Way Bioswales

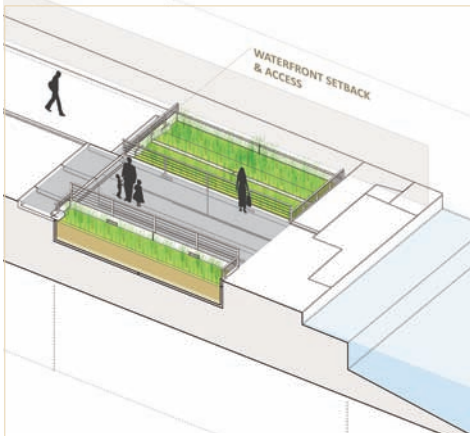
Bronx, Brooklyn, Manhattan, and Queens

A Project of the Department of Environmental Protection, the Department of Parks & Recreation, the Department of Transportation, and the Department of Design and Construction

Sited uphill from catch basins, these bioswales divert stormwater runoff from the combined sewer system, thereby decreasing the discharge of combined sewer overflow into the local waterways during rainstorms. Similar in appearance to a standard street tree pit, but specially designed to capture and absorb water, these bioswales feature engineered soils and versatile native plantings that are tolerant of both wet and dry conditions.

Design Team

Department of Environmental Protection: Carter Strickland, Commissioner; Angela Licata, Deputy Commissioner, Sustainability; Magdi Farag, Assistant Commissioner, Office of Green Infrastructure; Margot Walker, Director, Capital Planning & Partnerships, Office of Green Infrastructure; Raymond Palmares, Program Director, Engineering & Field, Office of Green; Infrastructure Tetyana Klymenko, Program Director, Hydraulics & Design Review, Office of Green Infrastructure; Joshua Landecker, Engineer, Office of Green Infrastructure; Kathryn Prybylski, Engineer, Office of Green Infrastructure; Derick Tanning, Engineer, Office of Green Infrastructure; Chris Gallegos, Architect & former Design Commission Liaison; Howard Freidman, Design Commission Liaison; **Department of Parks & Recreation:** Veronica M. White, Commissioner; Liam Kavanagh, First Deputy Commissioner; Bram Gunther, Chief of Forestry, Horticulture & Natural Resources; Jeremy Barrick, Deputy Chief of Forestry; Nette Compton, RLA, Director of Green Infrastructure; Aurora Davis, Green Infrastructure Unit; Jeffrey Martin, RLA, Green Infrastructure Unit; Mary Nunn, RLA, Green Infrastructure Unit; Tannen Printz, RLA, Green Infrastructure Unit; Nandan Shetty, Green Infrastructure Unit; Amie Uhrynowski, Design Commission Liaison; **Department of Transportation:** Janette Sadik-Khan, Commissioner; Margaret Newman, Chief of Staff; Joseph Jarrin, Deputy Commissioner Finance, Contracts, and Program Management; Frank Mark, Assistant Commissioner Capital Program Management; Mike Flynn, Director of Capital Planning and Project Initiation; Lacy Shelby, Director of Green Infrastructure; Neil Gagliardi, Director of Design Review & Design Commission Liaison; Nick Peterson, Senior Project Manager; Nick Pettinati, Project Manager; **Department of Design and Construction:** David J. Burney FAIA, Commissioner; Eric McFarlane, Deputy Commissioner; Tom Wynne, Assistant Commissioner; Faith Rose RA, Senior Design Liaison & Design Commission Liaison; Tim Lynch, Landscape Architect; Sofia Zuberbuhler-Yafar, Project Manager



Prototypical Sponge Park at Gowanus Canal

Second Street west of the Gowanus Canal, Brooklyn

A Project of the Department of Transportation, the Department of Environmental Protection, and the Department of Parks & Recreation

Dlandstudio Architecture + Landscape Architecture

This Sponge Park consists of a lushly planted bioretention basin at the edge of the Gowanus Canal as well as three curbside bioswales further upland. Together, these elements absorb and filter stormwater runoff through phytoremediation and reduce the amount of overflow into the canal. The bioretention basin is partially decked with steel grating to provide public access to the water's edge.

Design Team

Dlandstudio Architecture + Landscape Architecture:

Susannah C. Drake ASLA AIA, Principal; Yong Kim, Project Manager; Halina Steiner, Senior Landscape Designer; Lindsey Nelson, Designer; Nina Chase, Designer; **Weidlinger**

Associates: James Quinn PE LEED AP, Principal; Peter Bakarich PE, Project Manager; Maria De Bonis, Civil Engineer; Colleen Kirk PE, Structural Engineer; Michael Oakland PhD PE, Geotechnical Engineer; **Manhattan College:** Dr. Kirk Barrett PE, Assistant Professor, Department of Civil and Environmental Engineering;

Passaic River Institute, Montclair State University:

Dr. Dibyendu Sarkar, Professor, Department of Earth and Environmental Studies and Director of the Doctoral Program in Environmental Management; **F2 Environmental Design:**

Eric T. Fleisher, Soil Engineer; **Center for Urban Pedagogy:**

Valeria Mogilevich, Deputy Director; Mark Torrey, Program Manager; **Department of Transportation:** Janette Sadik-Khan, Commissioner; Margaret Newman, Chief of Staff; Joseph Palmieri, Brooklyn Borough Commissioner; Keith Bray, Deputy Brooklyn Borough Commissioner; Wendy Feuer, Assistant Commissioner Urban Design & Art; Neil Gagliardi, Director of Design Review & Design Commission Liaison; Nicholas Pettinati, Project Manager; Christopher Hrones, Downtown Brooklyn Transportation Coordinator; Lacy Shelby, Director of Green Infrastructure; **Department of Environmental**

Protection: Carter Strickland, Commissioner; Angela Licata, Deputy Commissioner; John McLaughlin, Director, Office of Ecological Services; Kevin Clarke PE, Portfolio Manager; Stanley Joseph, Accountable Manager; Thasha Ramkissoon, Assistant Civil Engineer; Howard Freidman, Design Commission Liaison;

Department of Parks & Recreation: Veronica M. White, Commissioner; Thérèse Braddick, Deputy Commissioner for Capital Projects; Kevin Jeffrey, Brooklyn Borough Commissioner; Amie Uhrynowski, Design Commission Liaison; Bram Gunther, Chief of Forestry, Horticulture & Natural Resources; Jeremy Barrick, Deputy Chief of Forestry; Nette Compton, Director of Green Infrastructure; Thomas Ching, former Deputy Chief of Operations; Kean Eng, Senior Horticulture Manager; Jeff Martin, Landscape Architect; Mary Nunn, Landscape Architect



Muscota Marsh Wetland Restoration

Spuyten Duyvil Creek, West 218th Street and Indian Road, Manhattan

A Project of the Department of Parks & Recreation and Columbia University

James Corner Field Operations

Building on the site's latent ecology, this wetland restoration reintroduces salt marsh and freshwater wetland zones with a diverse palette of native plants. This environment attracts ribbed mussels, leopard frogs, herons, and egrets, which together contribute to a healthy, self-sustaining ecosystem. A domestic wood boardwalk wraps the edge of the wetland, so visitors can experience the sights and sounds of the naturalized river bank.

Design Team

James Corner Field Operations: James Corner, Principal; Lisa Switkin, Associate Partner/Managing Director; Ellen Neises, Associate Partner; Karen Tamir, Senior Associate; Isabel Castilla, Associate; Elizabeth Fain LaBombard, Associate; Grace Tang, Associate; **eDesign Dynamics:** Eric Rothstein, Managing Partner; Anusree Sreekumar, Project Engineer; **Langan Engineering:** Chris Vitolano, Vice President; Michael Nilson, Project Engineer; Thomas Devaney, Senior Environmental Planner; Garichel Sosa, Staff Engineer; **Halcrow Yolles:** Pierre Desautels, Principal/Vice President; Andy Chan, Associate; **Brandston Partnership:** Scott Matthews, Partner; **Skanska USA Building:** Christopher Cestone, Senior Vice President, Account Manager; Christopher Viola, Project Executive; Sharvil Patel, Project Manager; Nadi Feghali, Project Manager; James Siefert, Superintendent; **Department of Parks & Recreation:** Veronica M. White, Commissioner; Thérèse Braddick, Deputy Commissioner for Capital Projects; Joshua Laird, former Assistant Commissioner for Planning & Parklands; William T. Castro, Manhattan Borough Commissioner; Nancy Prince RLA, Deputy Chief of Design; Amie Uhrynowski, Design Commission Liaison; Gustavo Frindt RLA, Senior Designer, Capital Projects; Nicholas Molinari, Director of Planning; Andrea Vannelli, Project Manager; Jennifer M. Hoppa, Administrator of Northern Manhattan Parks; Marit Larson, Director of Wetlands Restoration; Michael J. Feller, Chief Naturalist; Tim Wenskus, Special Projects Manager; **Columbia University:** Joseph A. Ienuso, Executive Vice President of Facilities; La-Verna J. Fountain, Vice President for Construction Business Services and Communications; Joseph A. Mannino, Vice President, Capital Project Management; Michael T. Iorri, Associate Director, Capital Project Management; Maria V. Bootsma, Project Manager, Capital Project Management

SPECIAL RECOGNITION



BEACH ACCESS RESTORATION, PHASE I

Brighton Beach and Coney Island Beach, Brooklyn; Rockaway Beach, Queens;
Midland Beach, Cedar Grove Beach, and Wolfe's Pond Park Beach, Staten Island

A Project of the Department of Parks & Recreation and the Department of Design and Construction

McLaren Engineering Group

Garrison Architects

LTL Architects

Sage and Coombe Architects

Mathews Nielsen Landscape Architects

Pentagram

In the wake of Hurricane Sandy, the city's beaches lay devastated with boardwalks and piers stripped of decking, flooded service and concession buildings, scattered debris, and erosion. With the exhaustive emergency clean-up complete, beach access was restored on May 24, 2013 in time for the summer season. Reopened beaches include sleek modular restrooms and lifeguard stations elevated above the 500-year floodplain, restored boardwalk oases replete with shade structures and brightly colored supergraphics, native beach plantings, and a cheerful wayfinding signage program. Opening later in the season, Steeplechase Pier will feature recycled plastic lumber decking, integrated seating, shade structures, and an observation platform. Phase II will build upon the coastal protection and resiliency to fully restore the city's beaches.

Design Team

McLaren Engineering Group: Malcolm G. McLaren PE, President & Chief Executive Officer; Steven L. Grogg PE, Vice President & Site/Civil Division Chief; Thomas Broderick, Division Chief – Structures; Luke Daur, Senior Engineer; Nathan Shuman, Senior Engineer; John Speer, Senior Engineer; Dominic DeSantis, Staff Engineer; Curtis Nordin, Staff Engineer; Jon Skinner, Staff Engineer; **Garrison Architects:** James Garrison, Principal; Chris Anastos, Principal; Marina Soluvchuk, Principal; Sal Tranchina, Senior Associate; Jason Buchheit, Project Architect; Dan Lashmore, Project Representative; Maria Escalera, Senior Designer; Marisa Ferrara, Senior Designer; **LTl Architects:** Paul Lewis, Principal; Marc Tsurumaki, Principal; Kristen Alexander, Project Manager; Mathews Nielsen Landscape Architects: Kim Mathews, Principal; Signe Nielsen, Principal; Dan Yannaccone, Senior Landscape Architect; B. Chatfield, Landscape Architect; Heather Fuhrman, Landscape Designer; **Sage and Coombe Architects:** Jenifer Sage, Principal; Peter Coombe, Principal; Kit Yan, Project Manager; Sam Loring, Project Architect; Allen Slamic, Project Designer; Christo Logan, Senior Designer; **Pentagram:** Paula Scher, Principal; Courtney Gooch, Designer; **OLA Consulting Engineers:** Patrick F. Lynch P.E., President; Steven Abbattista P.E., Principal; Daniel Smith P.E., Associate; Scott Ziegler P.E., Senior Engineer; **Sabir, Richardson & Weisberg:** Cappy Sabir, Principal; Yvette Richardson, Principal; Orah Weisberg, Principal; Mike Almon, Associate Principal; Richard Franklin, Associate Principal; Ed Sabir, Associate Principal; **Department of Parks & Recreation:** Veronica M. White, Commissioner; Thérèse Braddick, Deputy Commissioner for Capital Projects; Kevin Jeffrey, Brooklyn Borough Commissioner; Dorothy Lewandowski, Queens Borough Commissioner; Adena Long, Staten Island Borough Commissioner; Diane Jackier, Chief of Staff for Capital Projects; Laura Prussin, Deputy Chief of Staff for Capital Projects;

Kevin Quinn RA, Director of Architecture; Angelyn Chandler RA, Capital Program Manager; Nathan Tindair, Senior Project Manager; Jordan Smith, Senior Project Manager; Tara Valenta, Design Project Manager; George Kroenert, Construction Project Manager; Michael Azzollini, Associate Project Manager; Todd Mitchell, Landscape Architect; Greg Losapio, Assistant Landscape Architect; Elizabeth Jordan, Landscape Architect; Amie Uhrynowski, Design Commission Liaison; **Department of Design and Construction:** David J. Burney FAIA, Commissioner; David A. Resnick AIA, Deputy Commissioner; Frank D'Arpino, Associate Commissioner; Eric Boorstyn AIA LEED AP, Associate Commissioner; Michael Nastasi, Assistant Commissioner; Faith Rose RA, Senior Design Liaison & Design Commission Liaison; Anthony Romeo RA, Program Director; Roberto Petruccelli, Deputy Program Director; Mike Kenny, Deputy Director, Libraries/Human Services Public Buildings; Charlie Jimenez Hernandez, Administrative Construction Project Manager; Robert Egbert, Administrative Project Manager; Alex Shnaper, Senior Project Manager; Michael Mendelevski, Senior Project Manager

Michael R. Bloomberg

Mayor

Patricia E. Harris

First Deputy Mayor

Public Design Commission of the City of New York

Signe Nielsen

President

Landscape Architect

Philip E. Aarons

Vice President

Lay Member

Guy Nordenson

Secretary

Lay Member

Mahnaz Ispahani Bartos

The New York Public

Library

Maria Elena González

Sculptor

Byron Kim

Painter

Otis Pratt Pearsall

Brooklyn Museum

James Stewart Polshek

Architect

Paula Scher

Lay Member

Kandace V. Simmons

Mayor's Representative

Ann G. Tenenbaum

The Metropolitan

Museum of Art

Jackie Snyder, Executive Director

Keri Butler, Director of Art & Conservation

Alicia West, Director of Capital Projects

Rivka Weinstock, Project Manager

Julianna Monjeau, Special Projects Manager

Alyssa DesRochers, Research Assistant

Joan Bright, Director of Tour Programs

Gail Cornell, Gary Deane, Gail Green, Deirdre

La Porte, Charlie Macris, Patricia Orfanos, Peter

Rosenblatt, Sheila Zipper, Docents

William M. Heinzen, Counsel

Toby Allan Schust, Invitation and Program Design

Special thanks to the Department of Citywide Administrative Services, Gracie Mansion, Mayor's Office of Special Projects and Community Events, Mayor's Print Shop, NYPD Print Shop, Paravista, and Lois and William West.

