



Parks

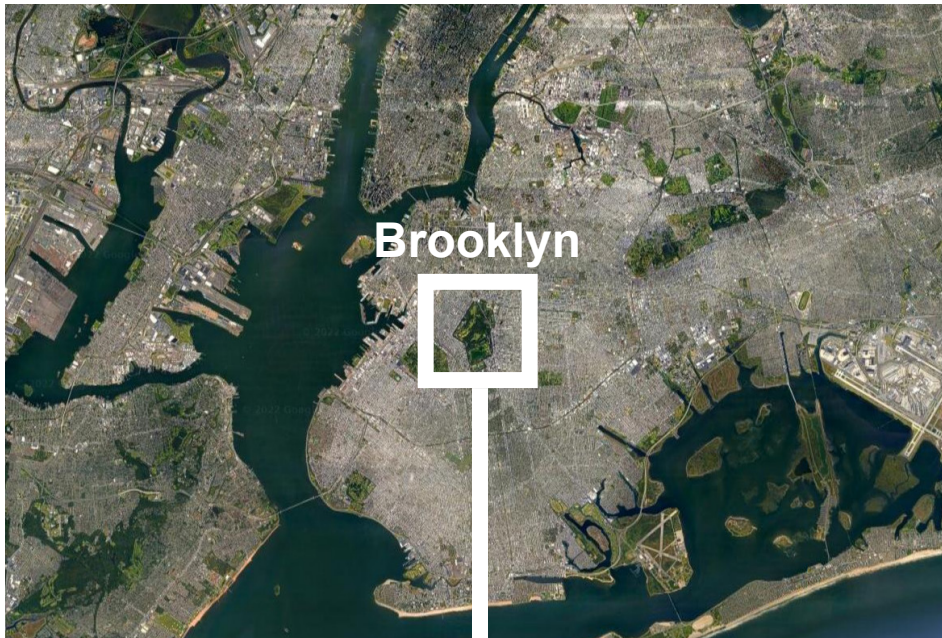
Prospect Park Lakeshore Restoration

Located on the southeast corner of Prospect Park, south of LeFrak Center, west of the Ocean Avenue and Parkside Avenue entrance, in the Borough of Brooklyn, B073-423M.

PDC Preliminary Review Phase I
August 12, 2024
Lillian Luu, Svetlana Ragulina
Prospect Park Alliance

Total Budget: \$3m (Phase 1)
City Council District 39, Brooklyn Delegation - \$1.0M FY23
Mayor, Eric Adams - \$2.0M FY23

Project Size: 3.5 ac



Brooklyn

City



2 MI



Prospect Park

Neighborhood



1000 FT



Ph I

Site



200 FT



NYC Parks



Prospect Park

Lakeshore Waterfront Restoration | Project Location

Community Priorities

Stormwater

manage and reduce flooding

Walkability

access to the water, ADA paths, access to other features, different walking experiences

Water

views of the water, access to the water

Wildlife

enhancing habitat, supporting more wildlife

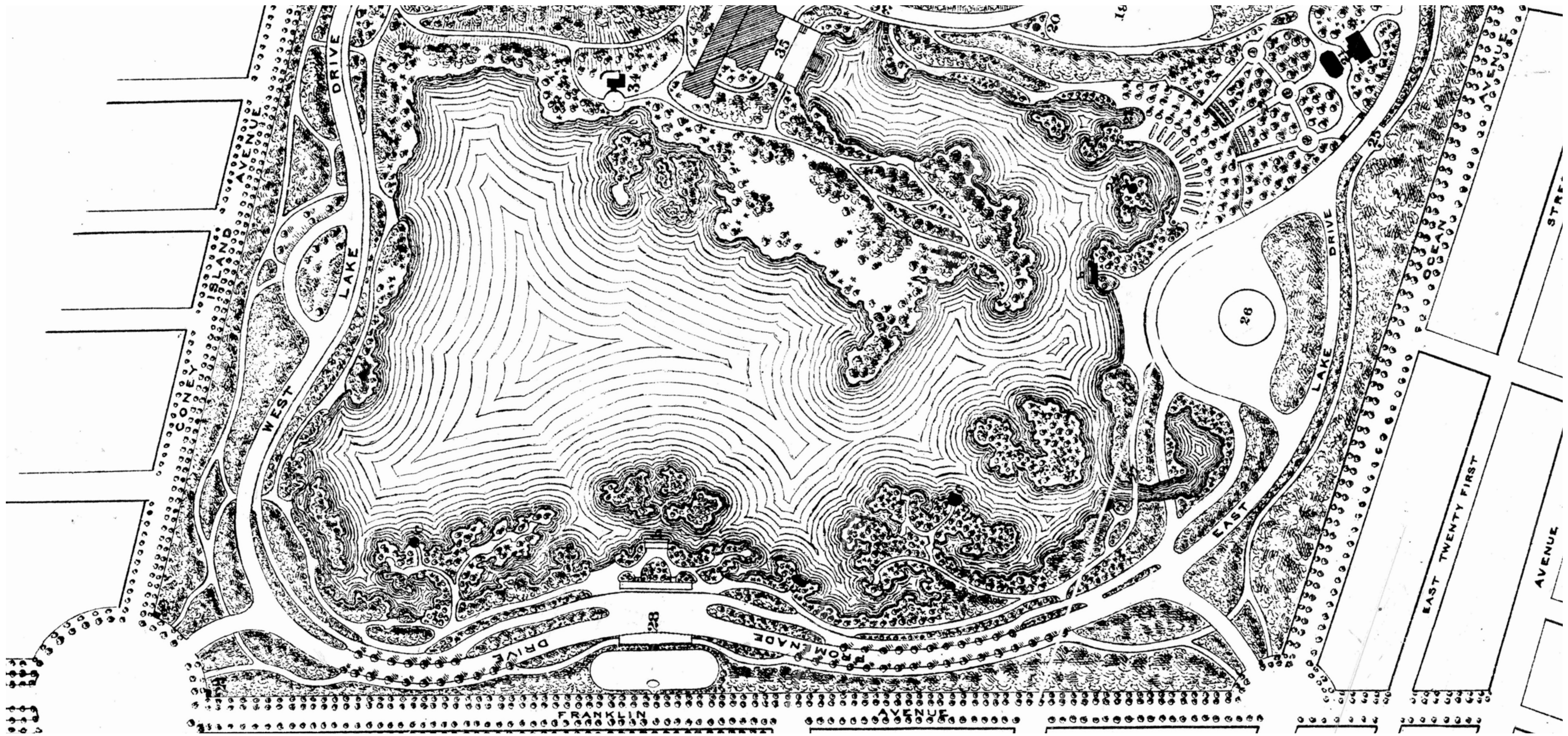
Safety

open spaces, remove areas where people can hide



Prospect Park

Lakeshore Waterfront Restoration | Community Outreach



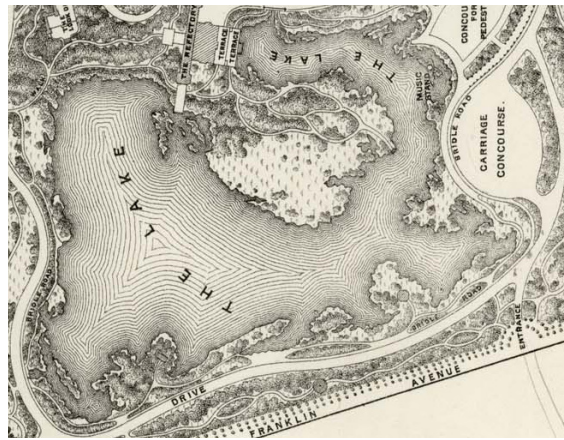
NYC Parks



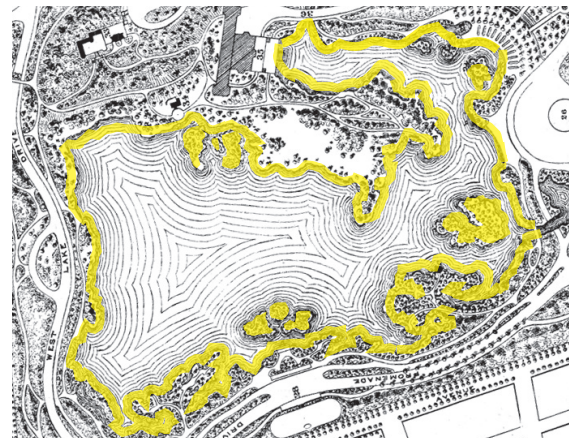
Prospect Park

Lakeshore Waterfront Restoration | 1874 Olmsted and Vaux Design Plan

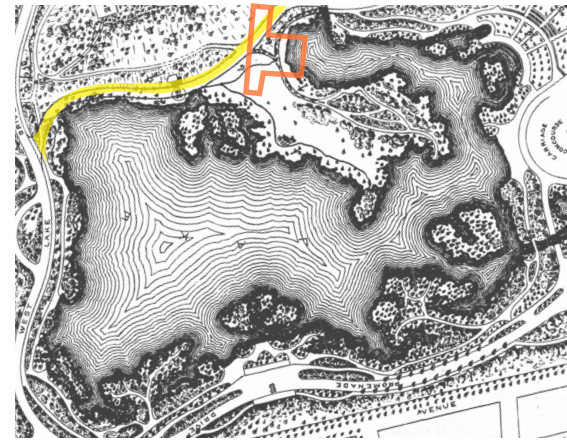




1866-1867 Plan
First Frederick Law Olmsted and Calvert Vaux plan with the Lake. Shoreline edges were soft.



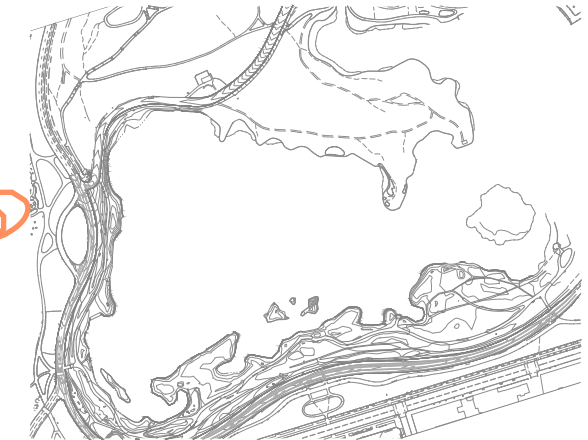
1874 Plan
Frederick Law Olmsted and Calvert Vaux final plan with soft shoreline edges and more defined islands and peninsulas.



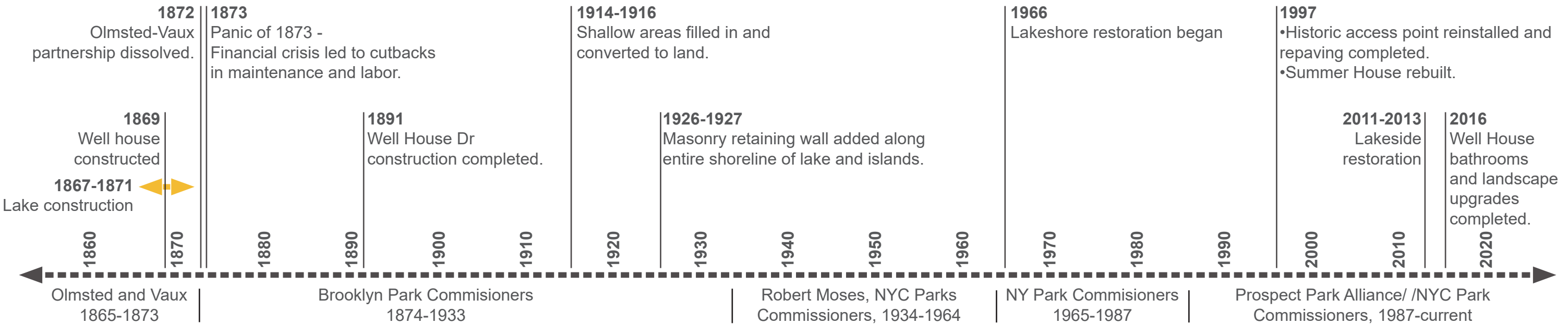
1888 Plan
Plan indicating proposed Well House Drive. Refectory was removed from the plan.



1937 Plan
Plan shows consolidation of islands, filling of shallow areas in the lake, and retaining walls along the shoreline.



2023 Survey
Surveying of existing conditions.



NYC Parks



Prospect Park

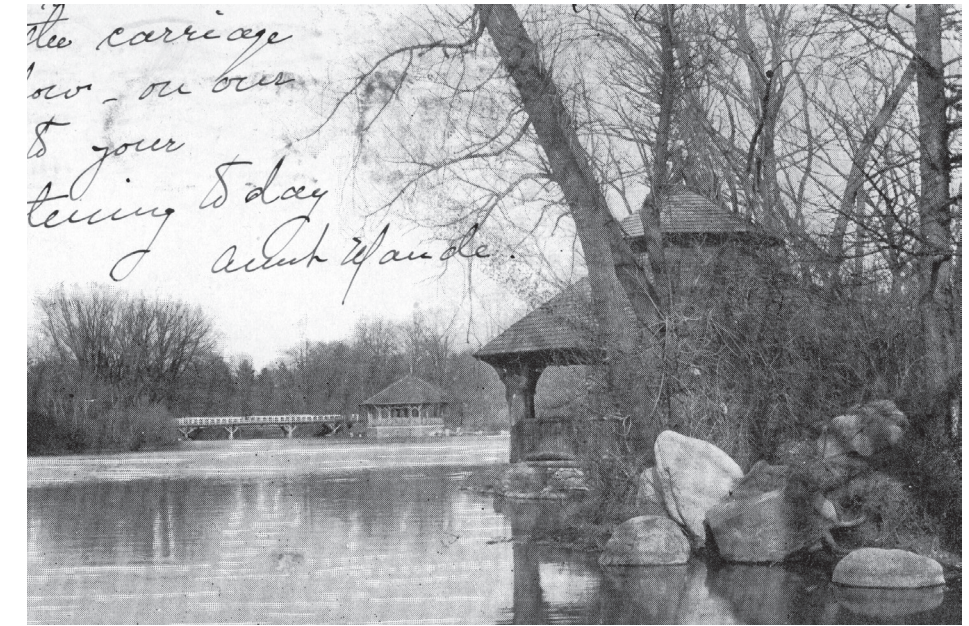
Lakeshore Waterfront Restoration | Historic Timeline



1889 Lake edge with trees



1898 Lake edge with trees



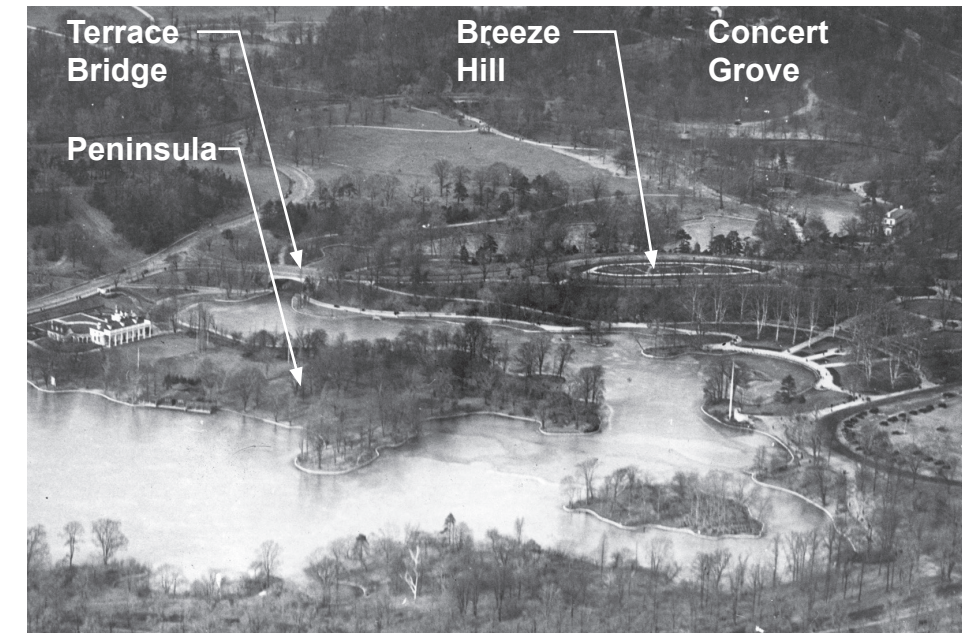
1909 boulders around the lake



1926 Shoreline with retaining wall



1926 Boat scene with retaining wall



1934 Aerial view with retaining walls



NYC Parks



Prospect Park

Lakeshore Waterfront Restoration | Historic Photos - Natural Edges and Added Wall



Broken pavement



Desire lines



Broken retaining wall and eroded soil



Eroded shoreline due to flooding



Invasive Plants



Broken retaining wall and eroded soil



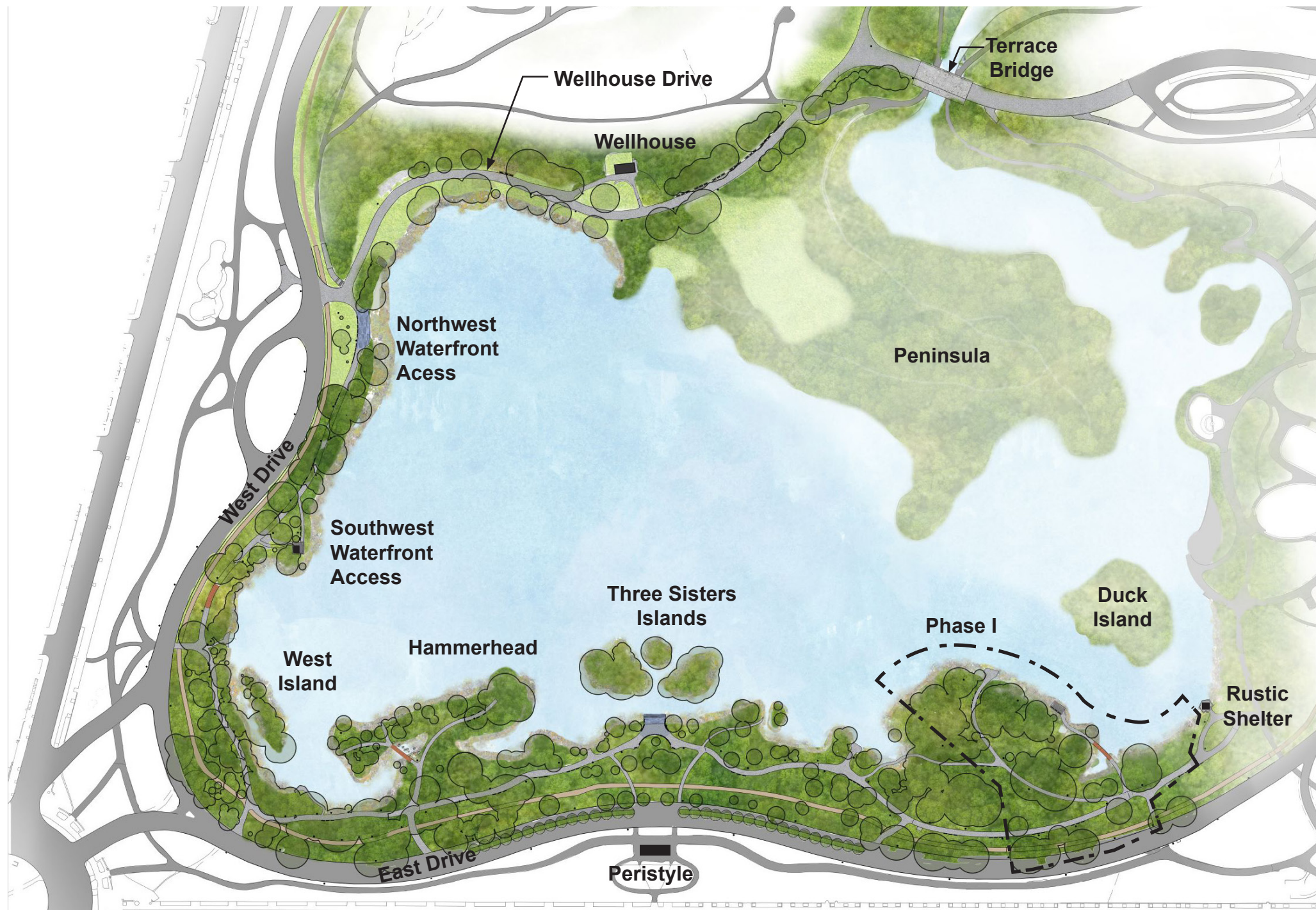
Goals

- Restore the shoreline to Olmsted and Vaux's original design intent
- Increase planting along the shoreline to support wildlife habitat
- Reduce flooding through regrading, phragmites removal, and stormwater management practices
- Improve ADA access to the waterfront



Prospect Park

Lakeshore Waterfront Restoration | Project Goals



Legend

- Project Limit
- Building or Structure
- Asphalt Pavement
- Timber path
- Bridle trail material
- Bluestone pavement
- Granite slab
- Tree



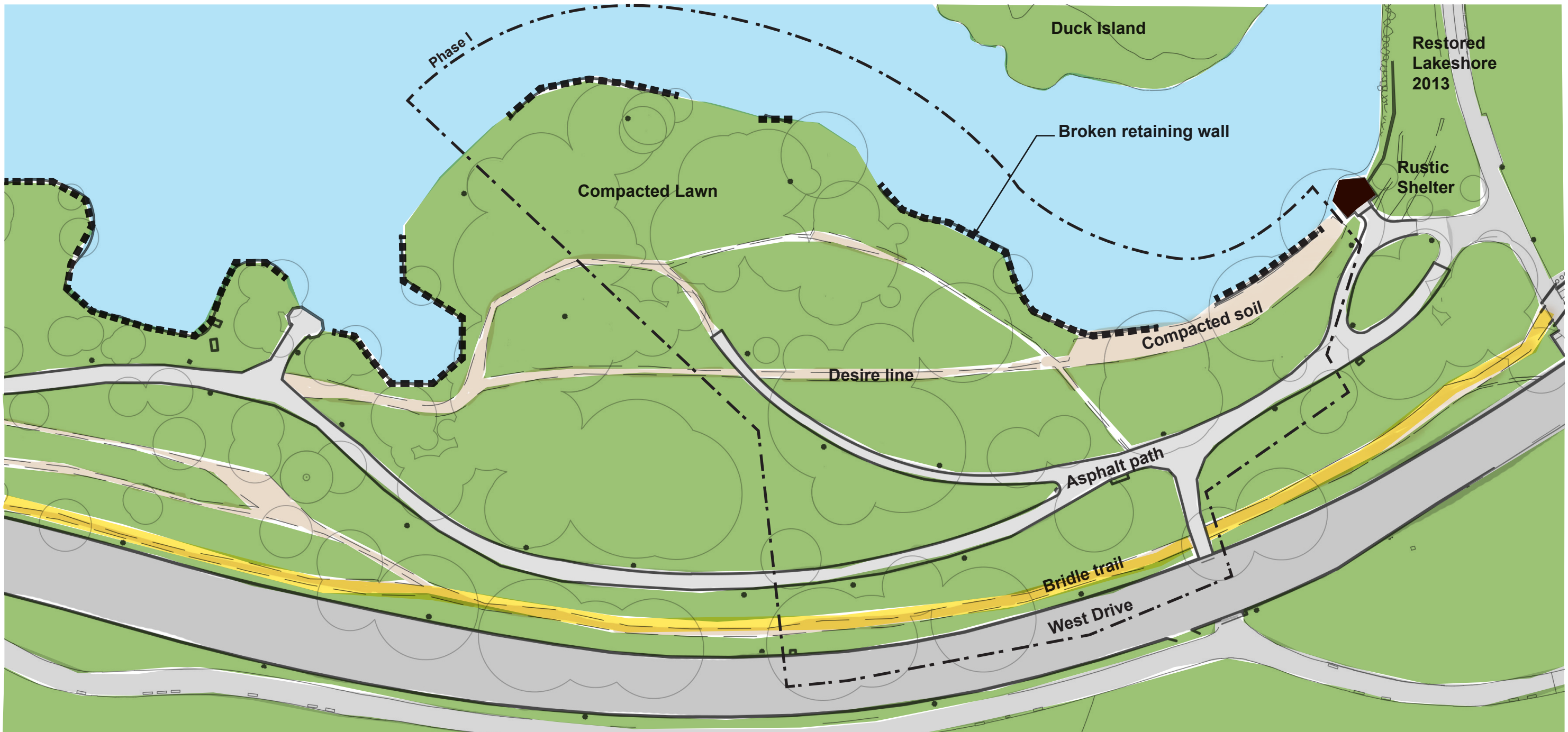
NYC Parks



Prospect Park

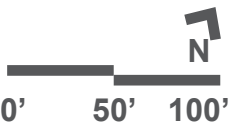
Lakeshore Waterfront Restoration | Master Plan Rendering

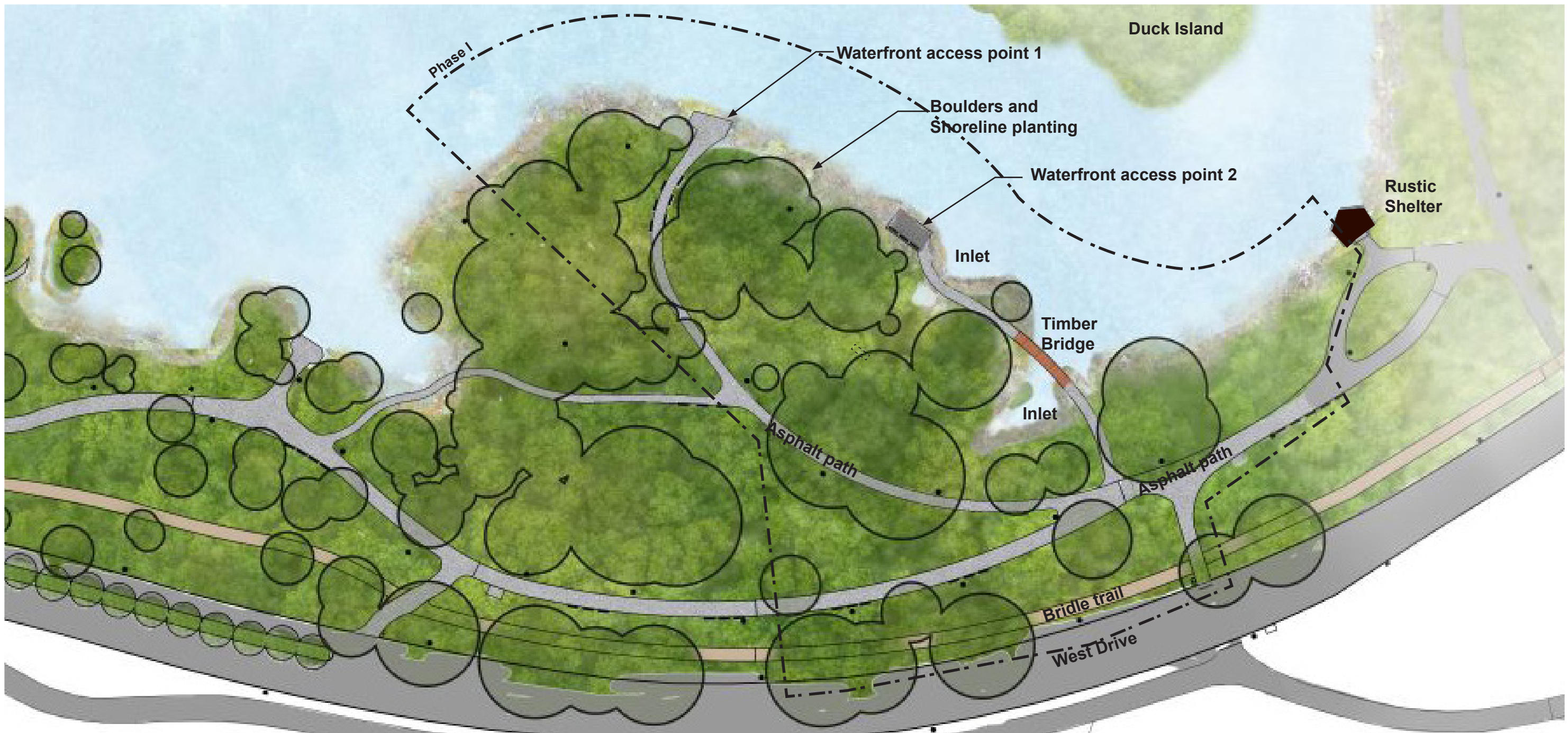




Prospect Park

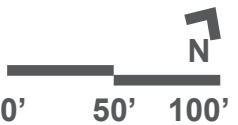
Lakeshore Waterfront Restoration | Existing Conditions Plan - Phase 1

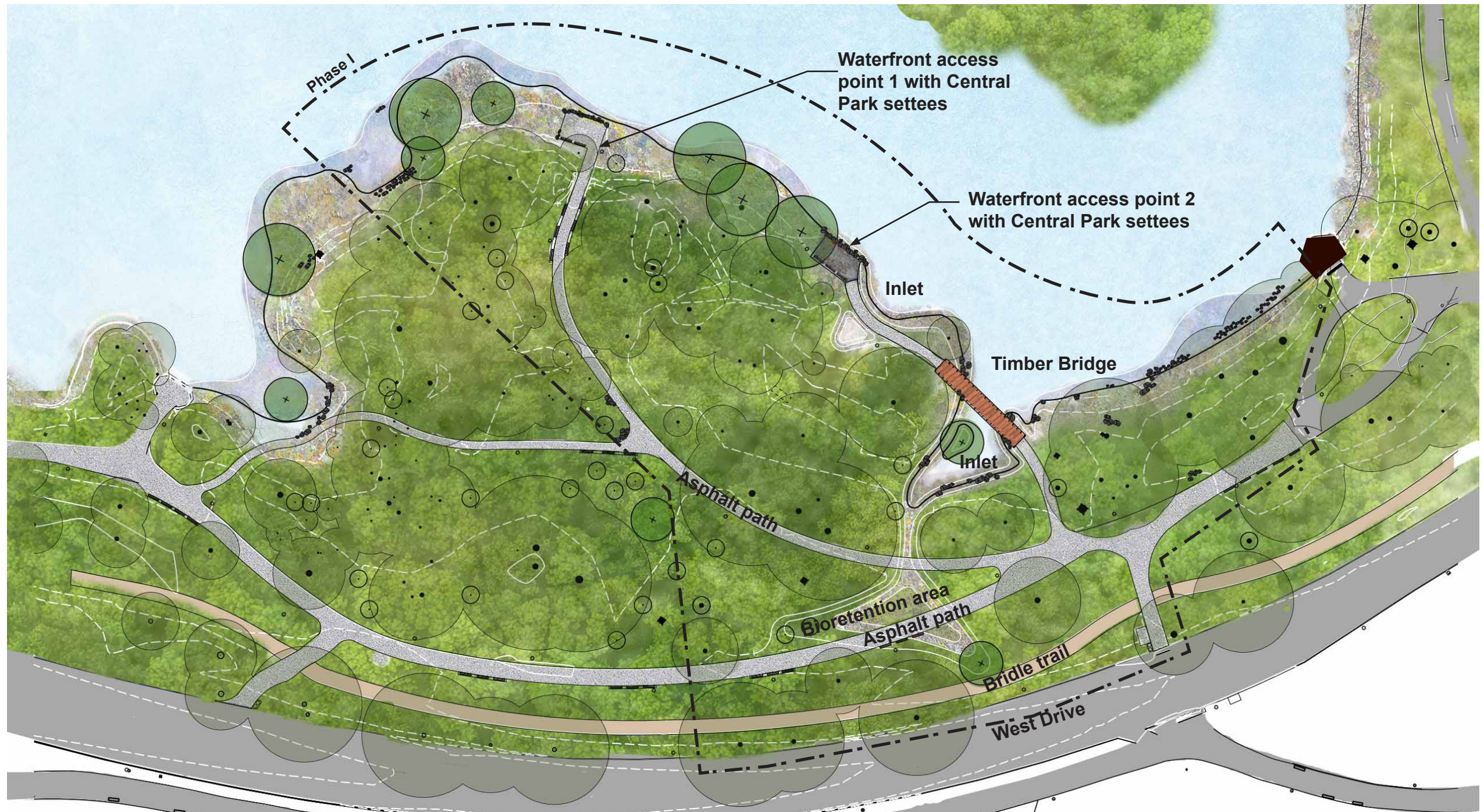




Prospect Park

Lakeshore Waterfront Restoration | Master Plan Approved Concept April 2024



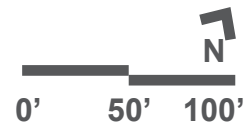


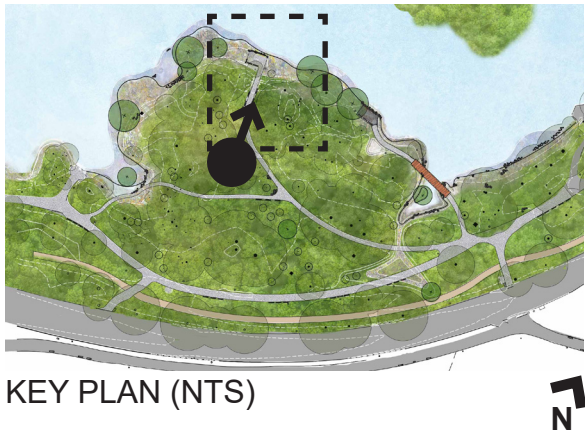
NYC Parks



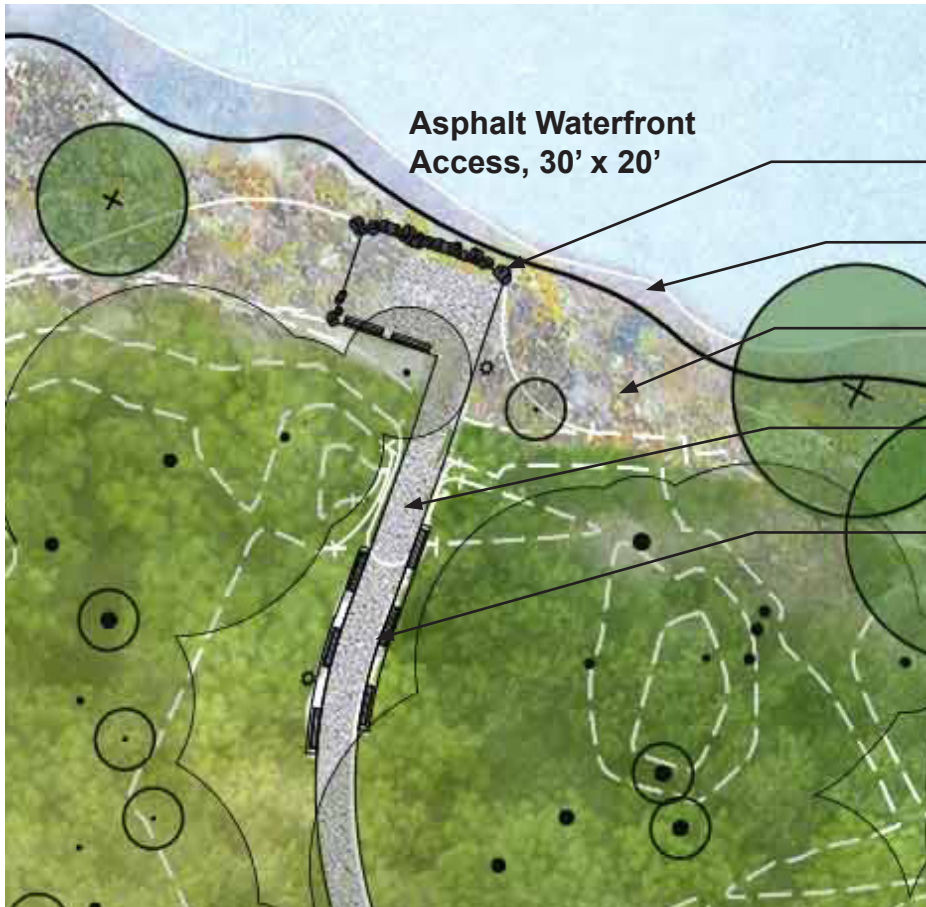
Prospect Park

Lakeshore Waterfront Restoration | Preliminary Phase 1 Plan





KEY PLAN (NTS)



ENLARGEMENT PLAN

- Boulders
- Aquatic planting
- Riparian planting
- Asphalt path, 8' W
- Central Park Settee, typ.



PERSPECTIVE

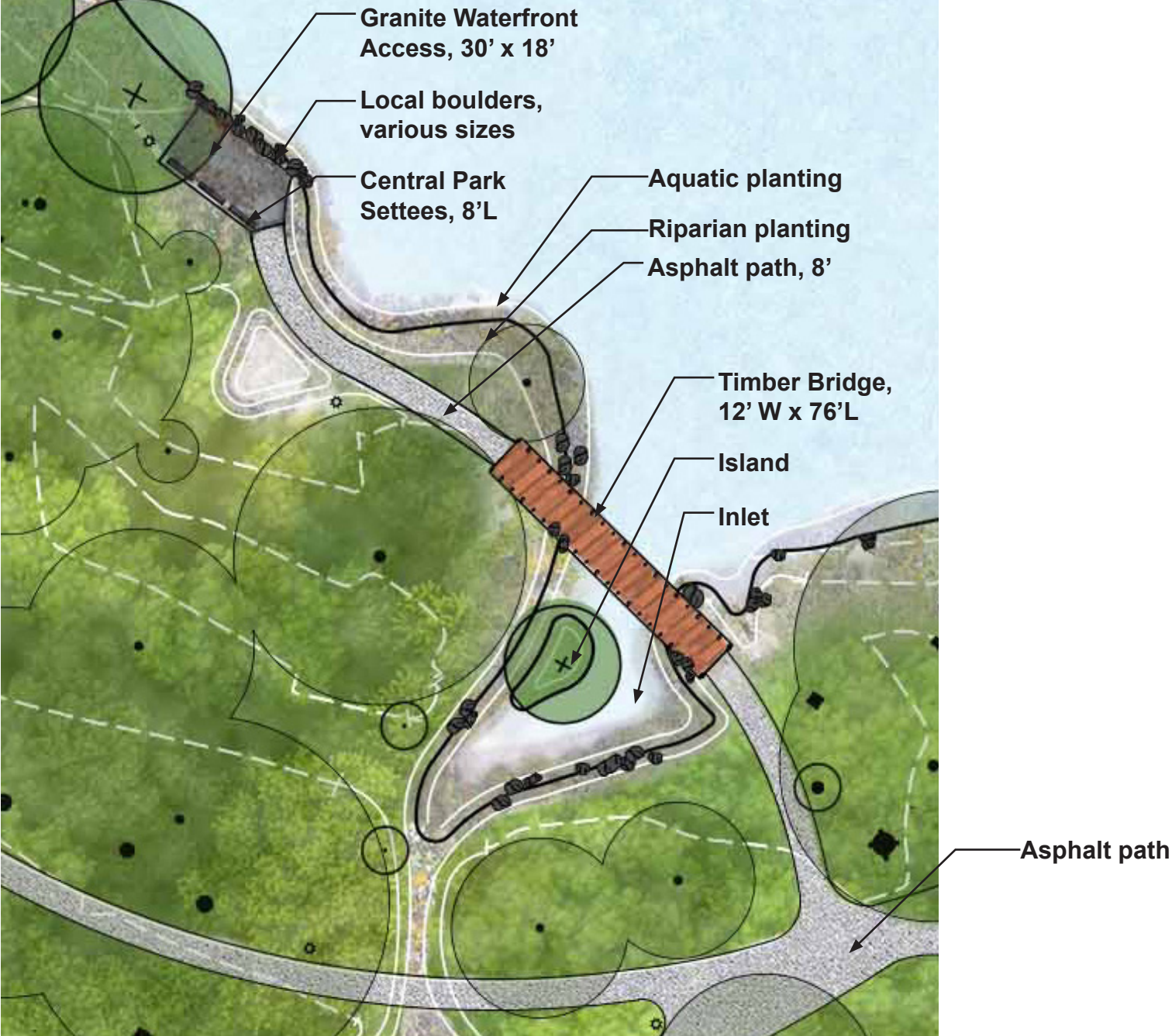
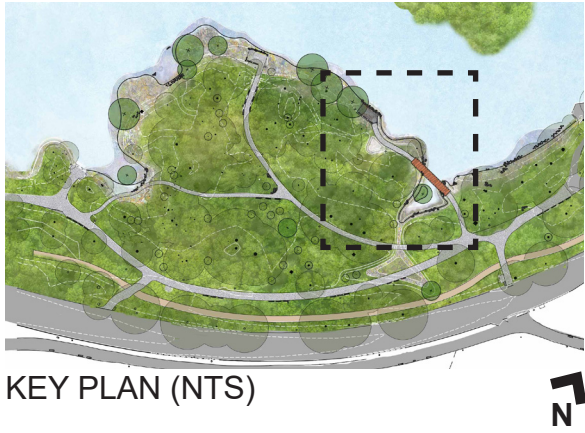


NYC Parks



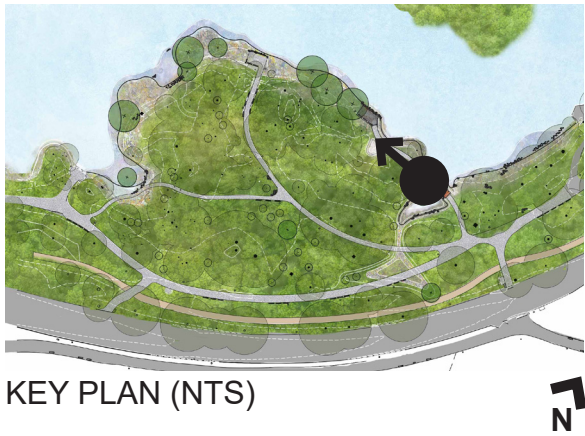
Prospect Park

Lakeshore Waterfront Restoration | Waterfront Access Point 1



Prospect Park

Lakeshore Waterfront Restoration | Waterfront Access Point 2 and Bridge



Prospect Park

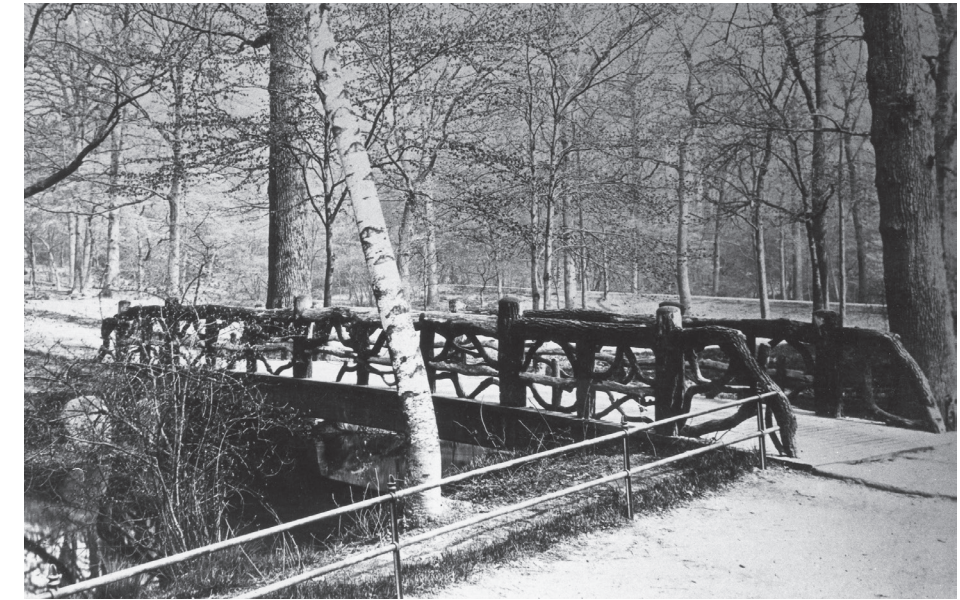
Lakeshore Waterfront Restoration | Access Point 2



1. Esdale Bridge (c. 1873)
Historic bridge



2. Ford Bridge (c. 1873 - no longer exists)
Historic bridge removed when inlet was filled in, no longer exists



3. Music Grove Bridge (1887)
Not original to 1874 plan, added in 1887



4. Fallkill Bridge (c. 1873)
Historic bridge



5. Binnen Bridge (c. 1873)



6. Binnen Bridge (c. 2000)

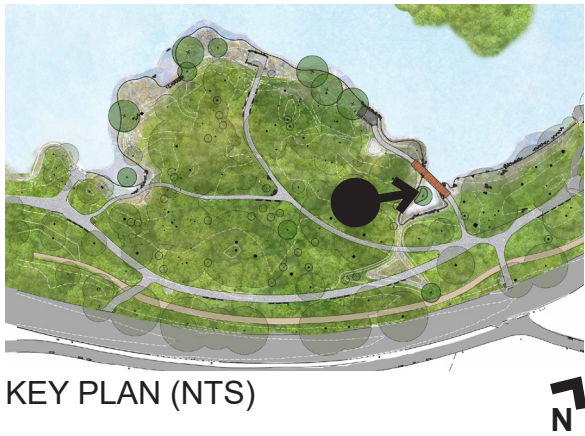


NYC Parks



Prospect Park

Lakeshore Waterfront Restoration | Prospect Park Bridge Precedents



PERSPECTIVE

Rustic Shelter

Timber Bridge

Aquatic planting
and boulders

Inlet

ADA path

Aquatic planting

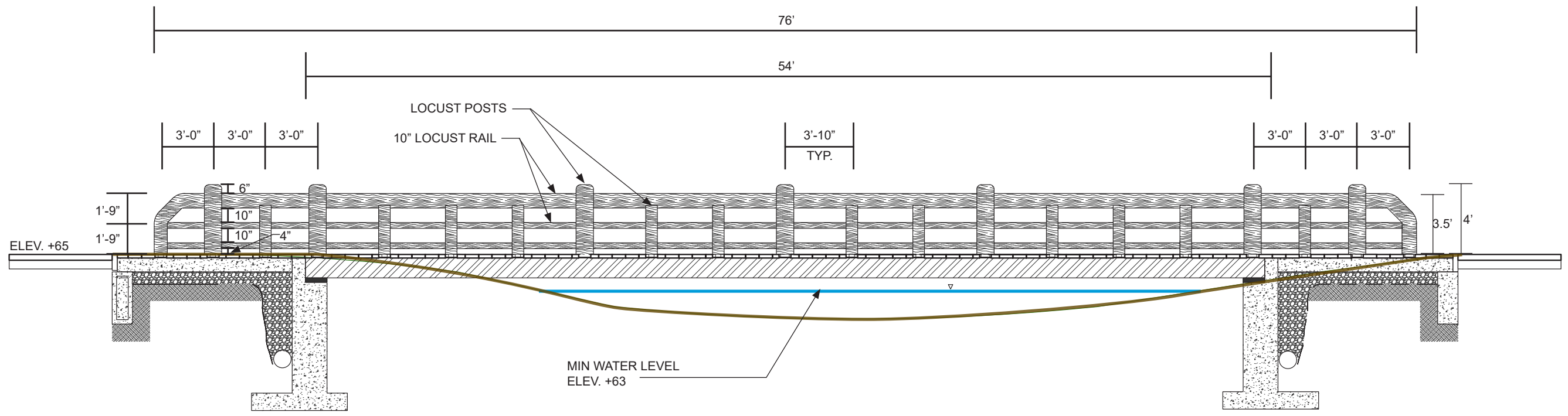
Vegetated island

Aquatic planting



Prospect Park

Lakeshore Waterfront Restoration | Timber Bridge





NYC Parks

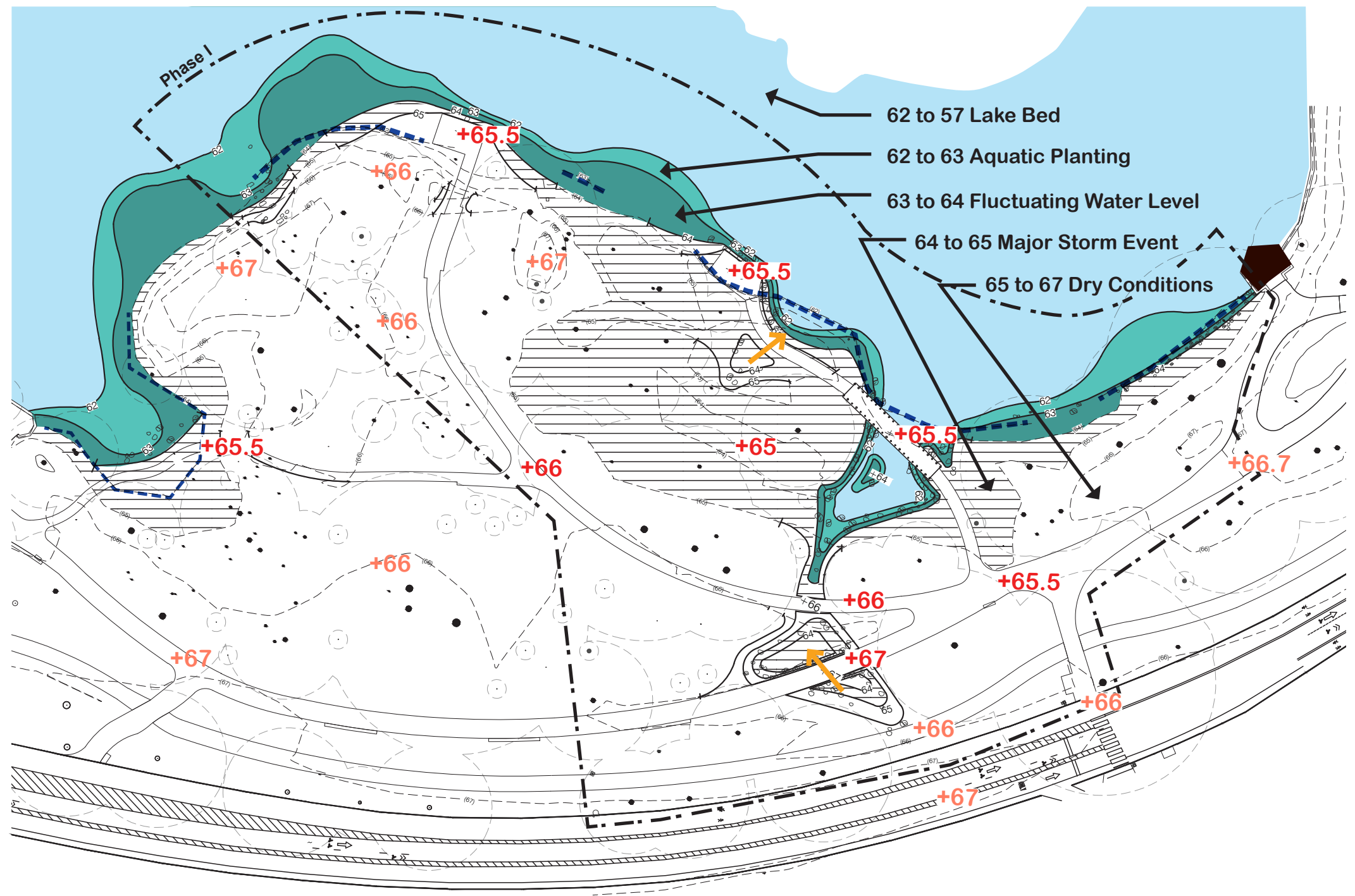


Prospect Park

Lakeshore Waterfront Restoration | 1874 Plan

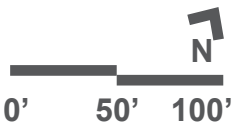
LEGEND

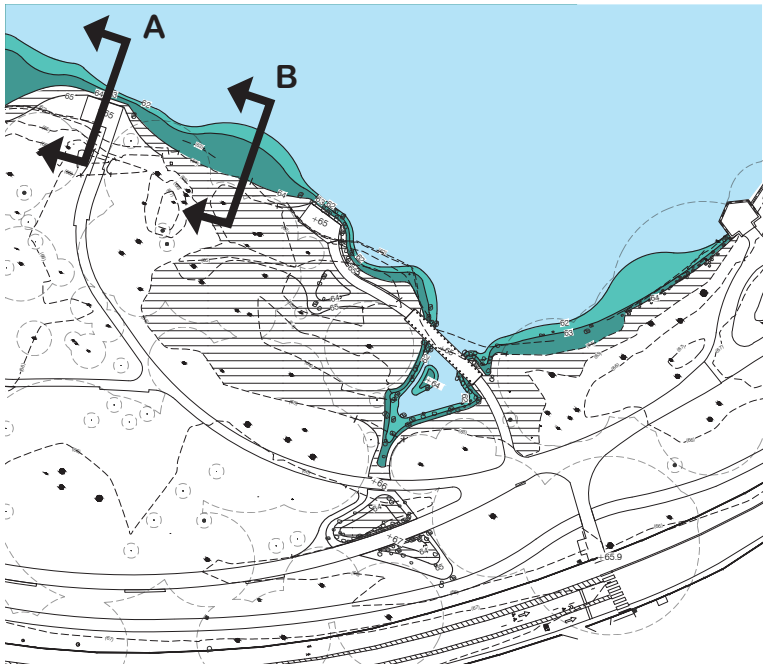
- Proposed contour
- Existing contour
- TW Varies 63/64
Retaining Wall to be removed
- Water Flow in Raingardens
- +65 Proposed Elevation
- +65 Existing Elevation



Prospect Park

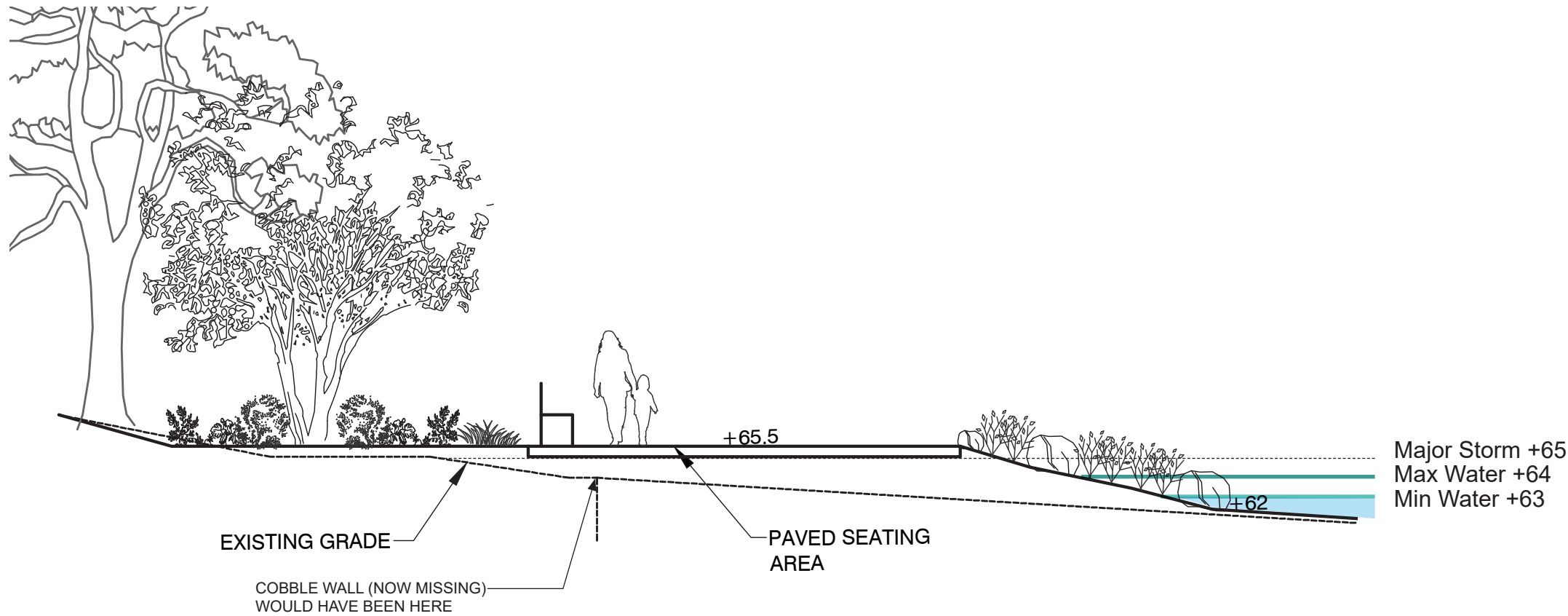
Lakeshore Waterfront Restoration | Proposed Grading Plan



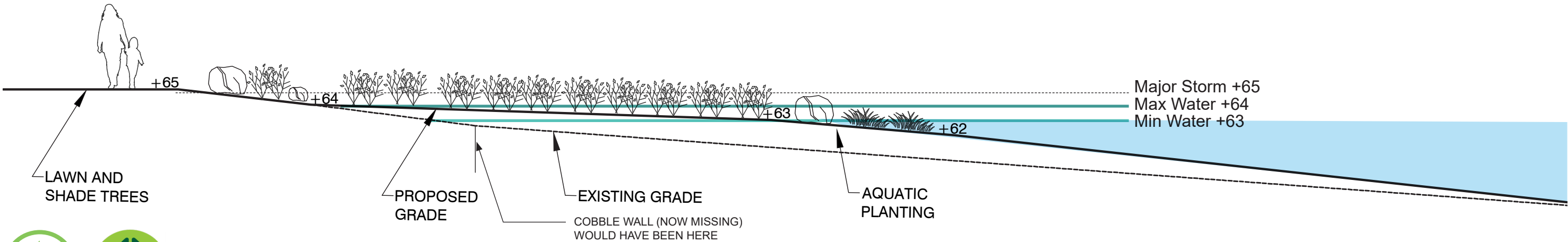


KEY PLAN (NTS)

SECTION A

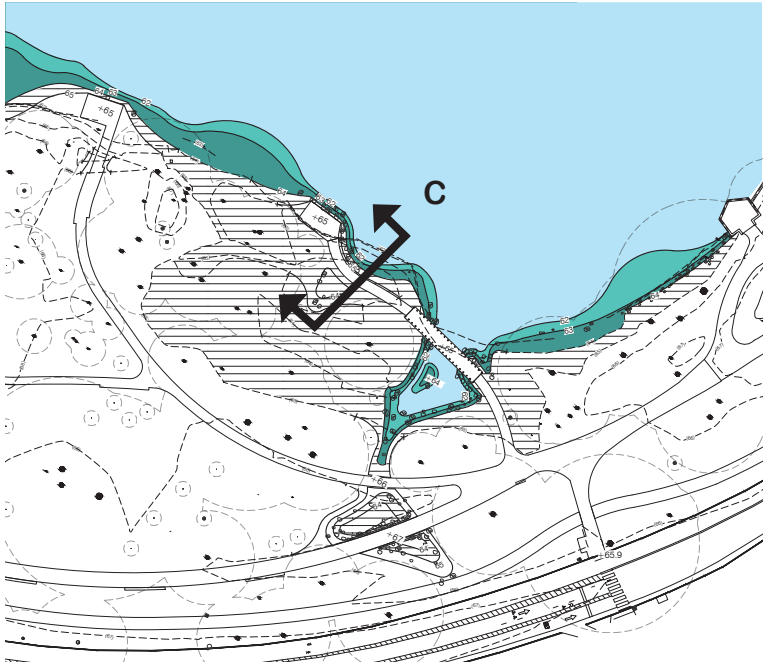


SECTION B

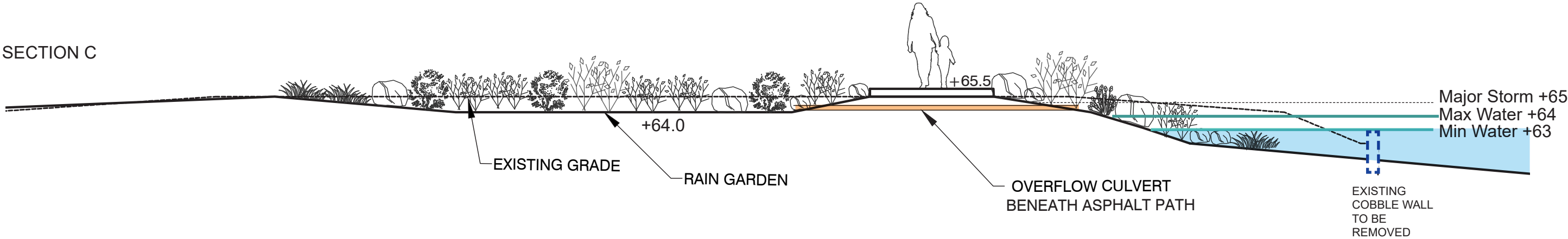


Prospect Park

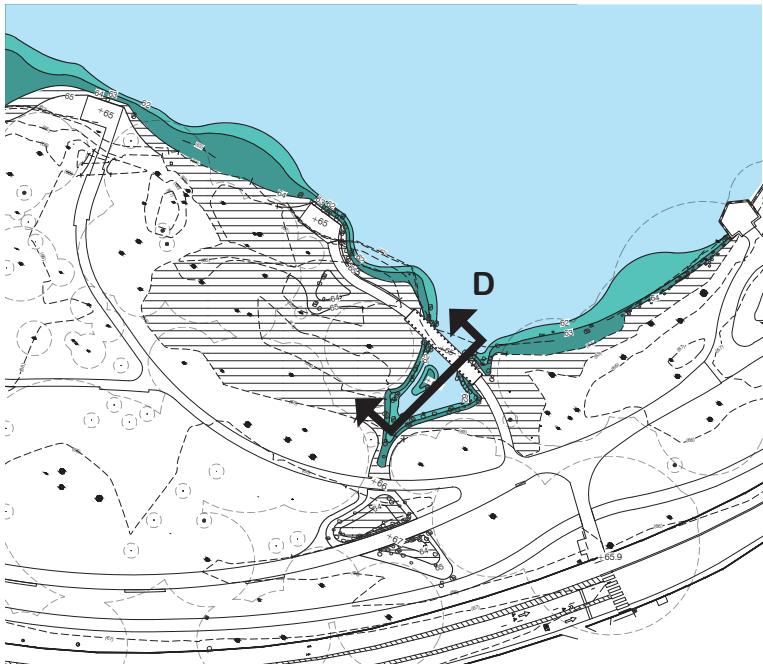
Lakeshore Waterfront Restoration | Sections A and B



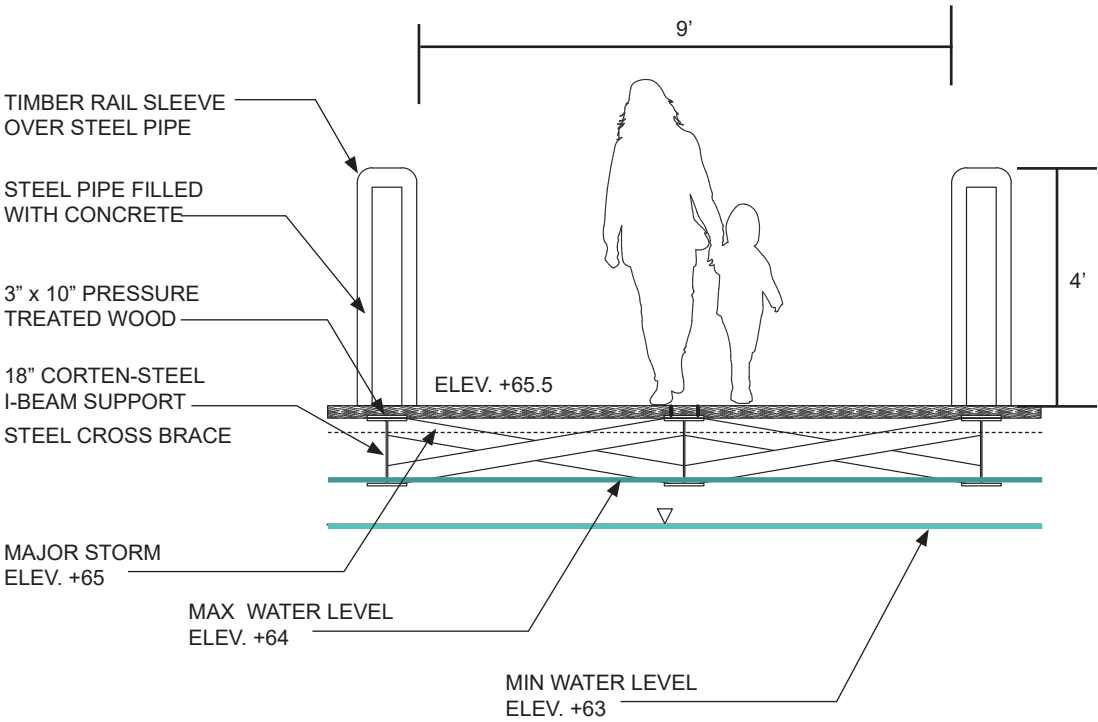
KEY PLAN (NTS)



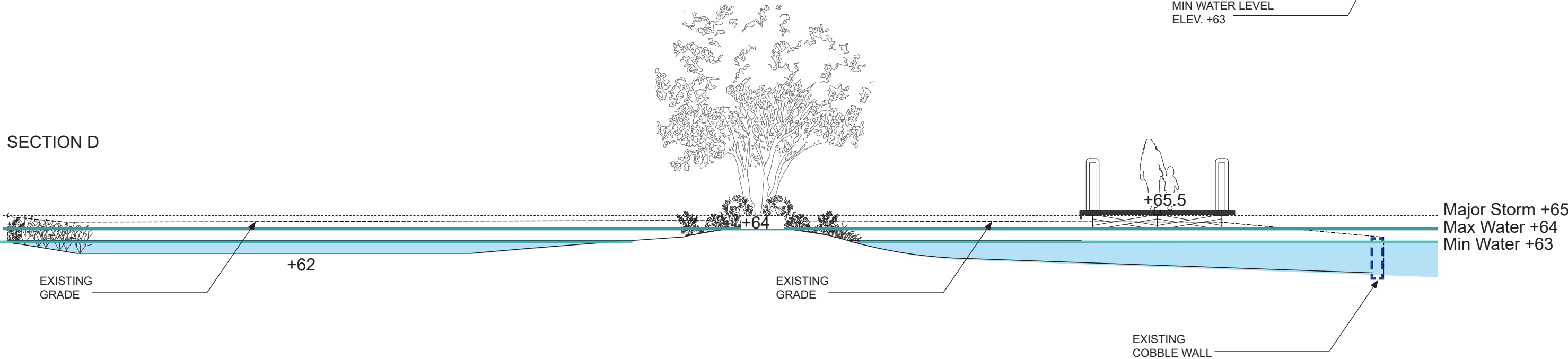
Prospect Park
Lakeshore Waterfront Restoration | Section C



KEY PLAN (NTS)



SECTION D

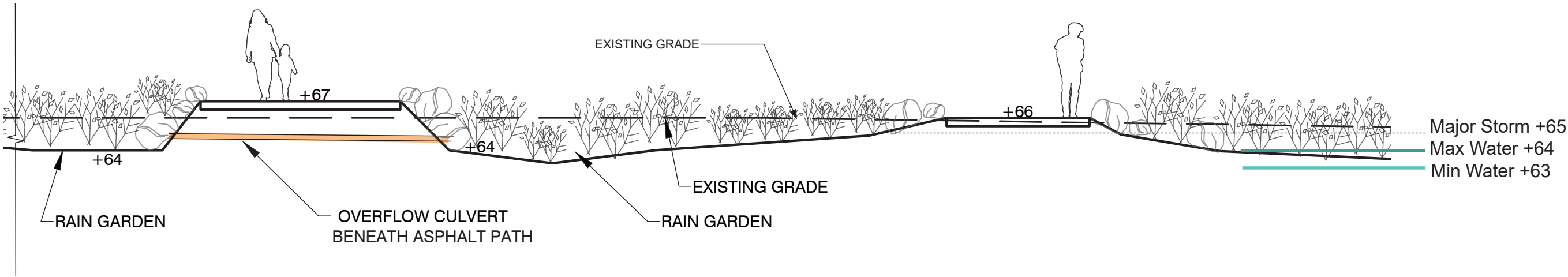
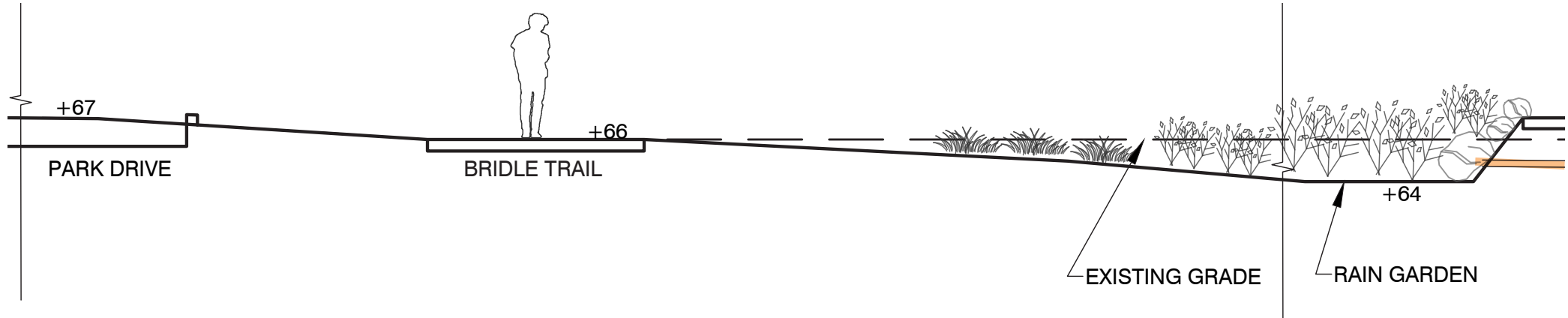


Prospect Park
Lakeshore Waterfront Restoration | Section D



KEY PLAN (NTS)

SECTION E

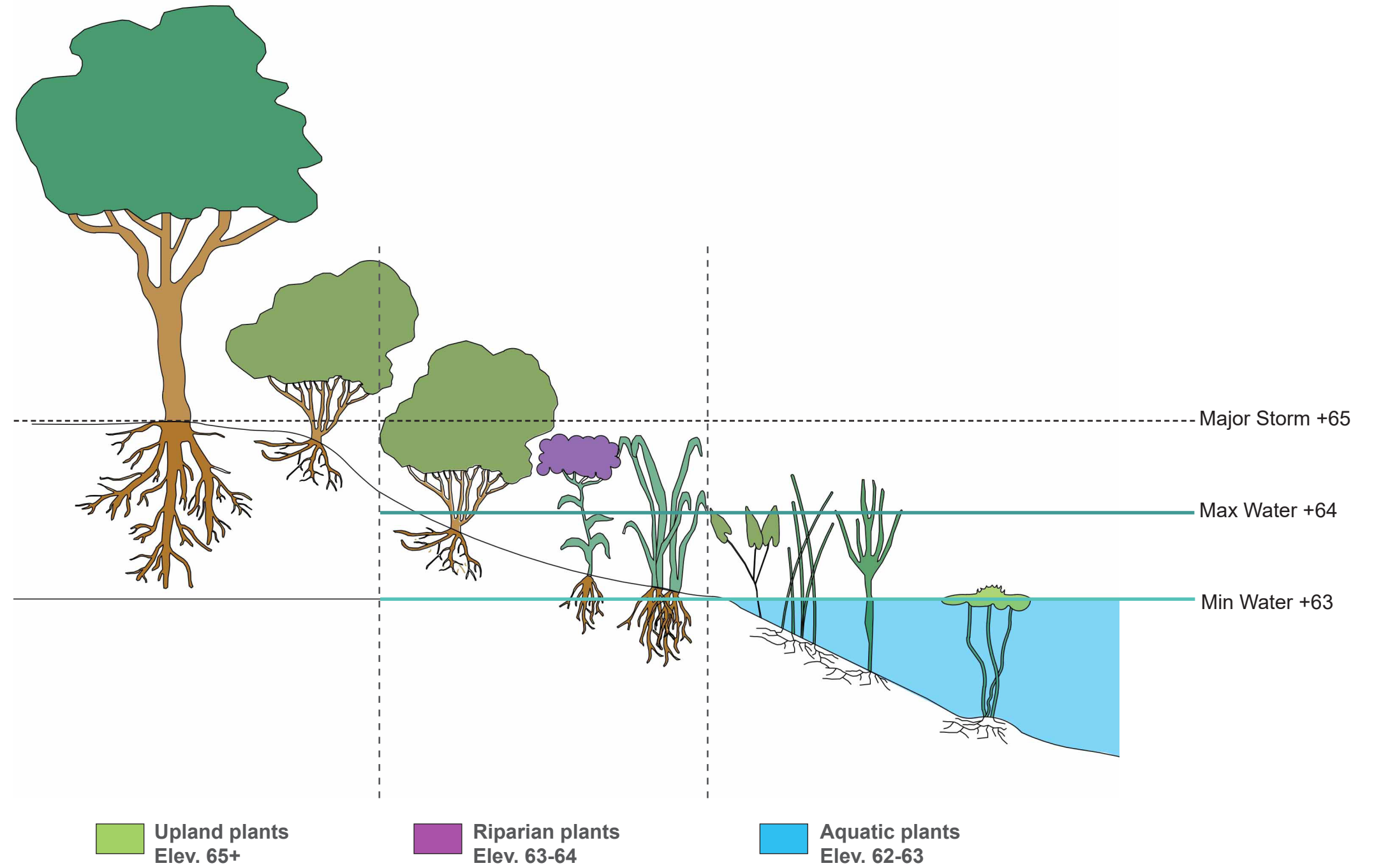


NYC Parks



Prospect Park

Lakeshore Waterfront Restoration | Raingarden Section E

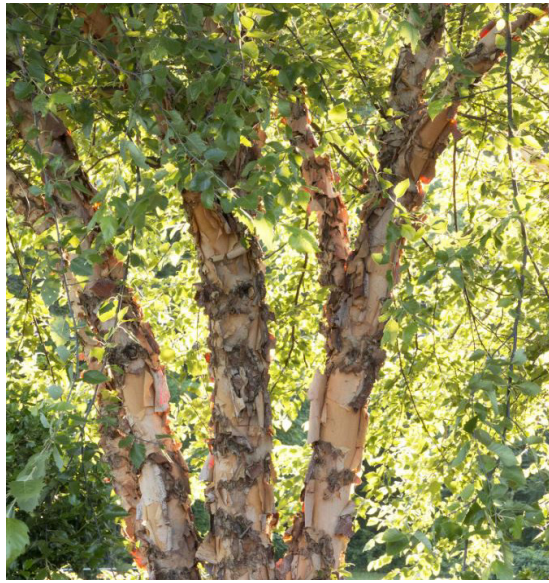




Red maple
Acer rubrum



Sweet birch
Betula lenta



River birch
Betula nigra



American holly
Ilex opaca



Sweetbay magnolia
Magnolia virginiana



Black gum
Nyssa sylvatica



Eastern white pine
Pinus strobus



Swamp white oak
Quercus bicolor



Willow oak
Quercus phellos



Bald cypress
Taxodium distichum



NYC Parks



Prospect Park

Lakeshore Waterfront Restoration | Tree Plant Palette (Upland and Riparian)



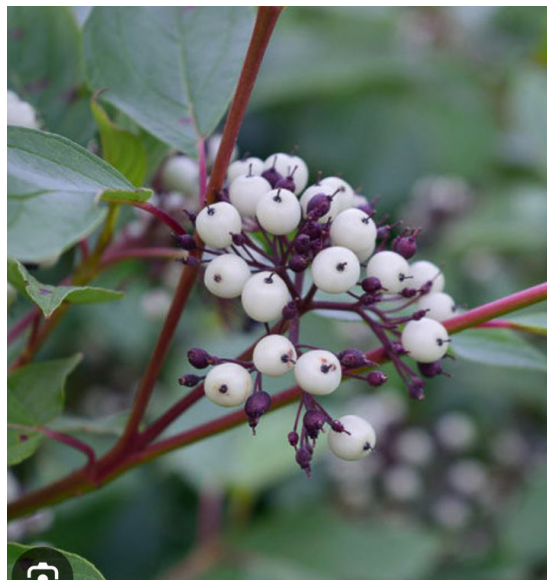
New Jersey Tea
Ceanothus americanus



Buttonbush
Cephalanthus occidentalis



Silky dogwood
Cornus amomum



Red osier dogwood
Cornus sericea



Winterberry
Ilex verticillata



Inkberry
Ilex glabra



Virginia sweetspire
Itea virginiana



Spicebush
Lindera benzoin



Black chokeberry
Aronia melanocarpa

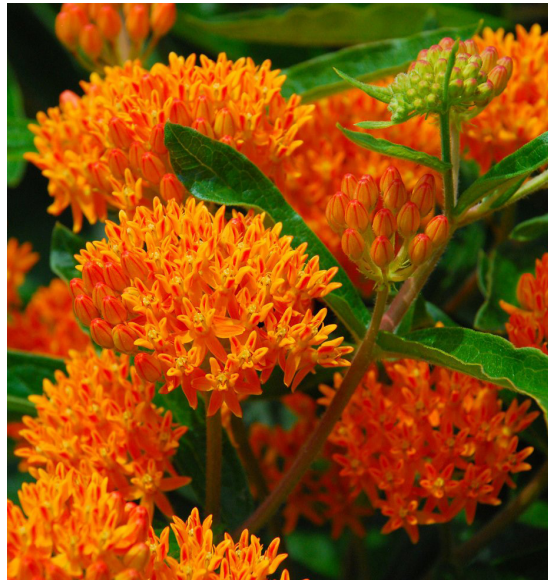


Elder
Sambucus spp.





Swamp milkweed
Asclepias incarnata



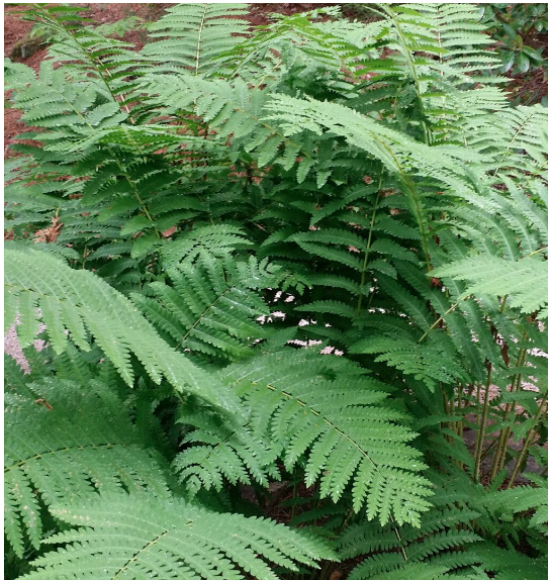
Butterfly weed
Asclepias tuberosa



Cardinal flower
Lobelia cardinalis



Boston fern
Nephrolepis exaltata



Cinnamon fern
Osmundastrum cinnamomeum



Royal fern
Osmunda spectabilis



Christmas fern
Polystichum acrostichoides



Woolgrass
Scirpus cyperinus



White wood aster
Eurybia divaricata



Rose mallow
Hibiscus moscheutos



NYC Parks



Prospect Park

Lakeshore Waterfront Restoration | Riparian Plant Palette



Fringed sedge
Carex crinita



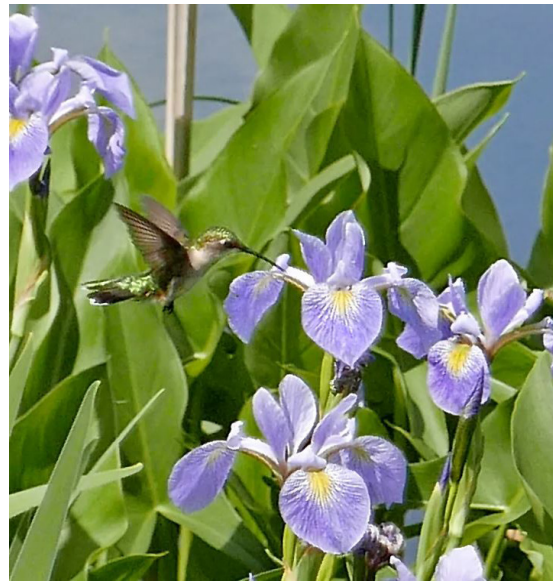
Lake sedge
Carex lacustris



Tussock sedge
Carex stricta



Blue Flag Iris
Iris versicolor



Iris
Iris virginica



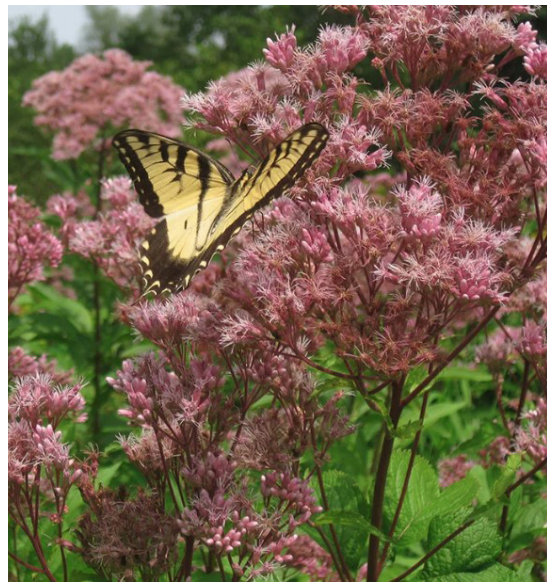
Canadian rush
Juncus canadensis



Soft rush
Juncus effusus



Path rush
Juncus tenuis



Eutrochium maculatum
Joe-pye weed



Aquilegia canadensis
Wild columbine

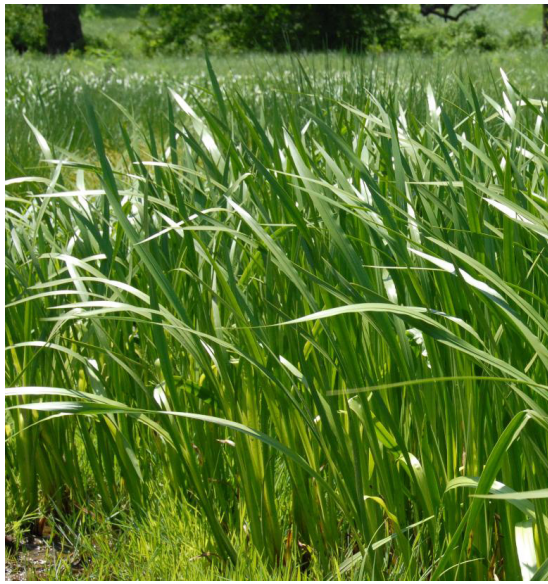


NYC Parks



Prospect Park

Lakeshore Waterfront Restoration | Riparian Plant Palette



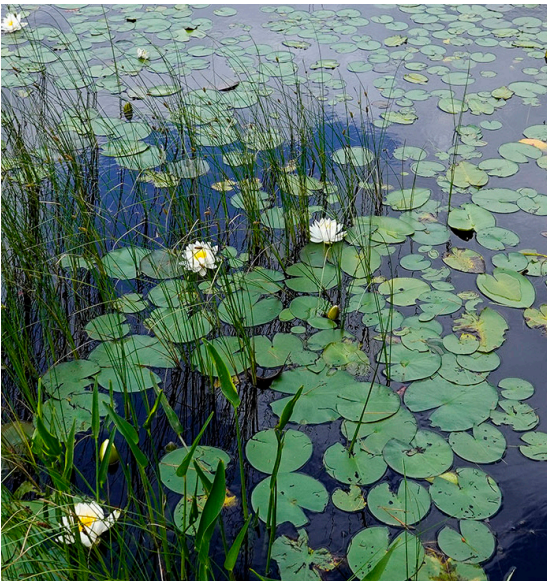
American sweet flag
Acornus americanus



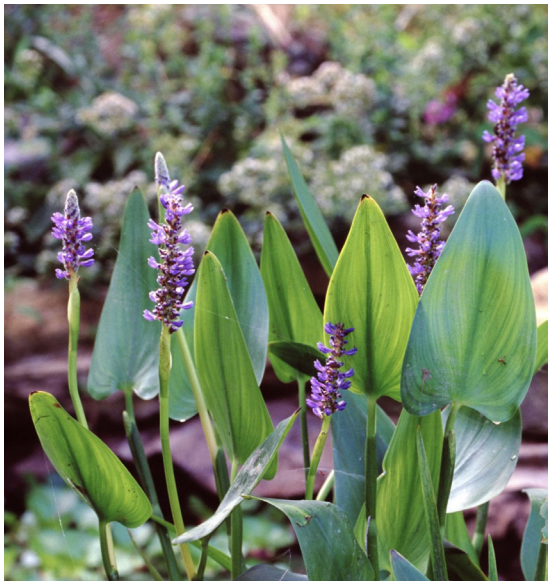
Sweet flag
Acornus calamus



Fringed sedge
Nuphar lutea



White Water-lily
Nymphaea odorata



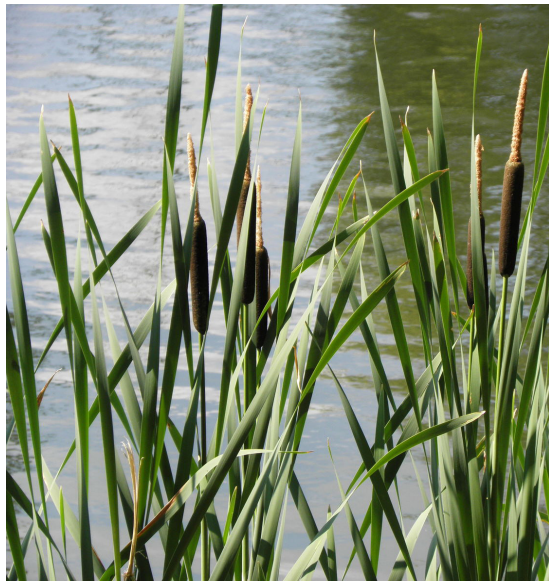
Pickerelweed
Pontederia cordata



Duck potato
Sagittaria latifolia



Swaying bulrush
Schoenoplectus subterminalis



Broadleaf cattail
Typha latifolia



Horned bladderwort
Utricularia cornuta



Golden Alexander
Zizia aurea



NYC Parks



Prospect Park

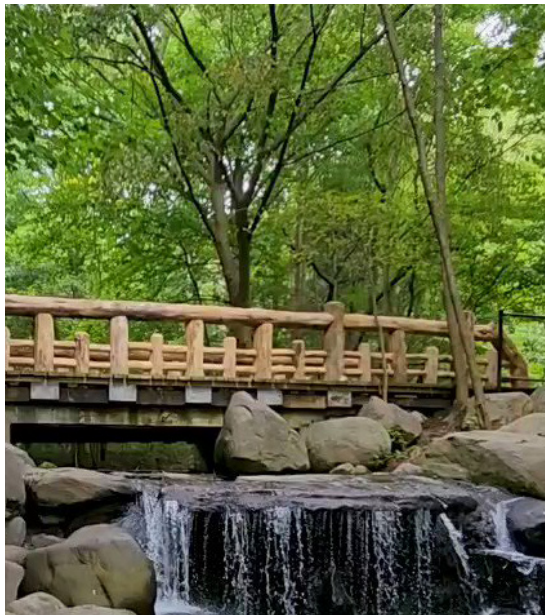
Lakeshore Waterfront Restoration | Aquatic Plant Palette



Asphalt Pavement



Local Granite Boulders



Timber Decking (Paths) and Rail
Above Photo at Binnen Bridge



Granite Slabs
Above Photo at Dog Beach



Bridle Path Material



Central Park Settee with arms



Bicycle Rack



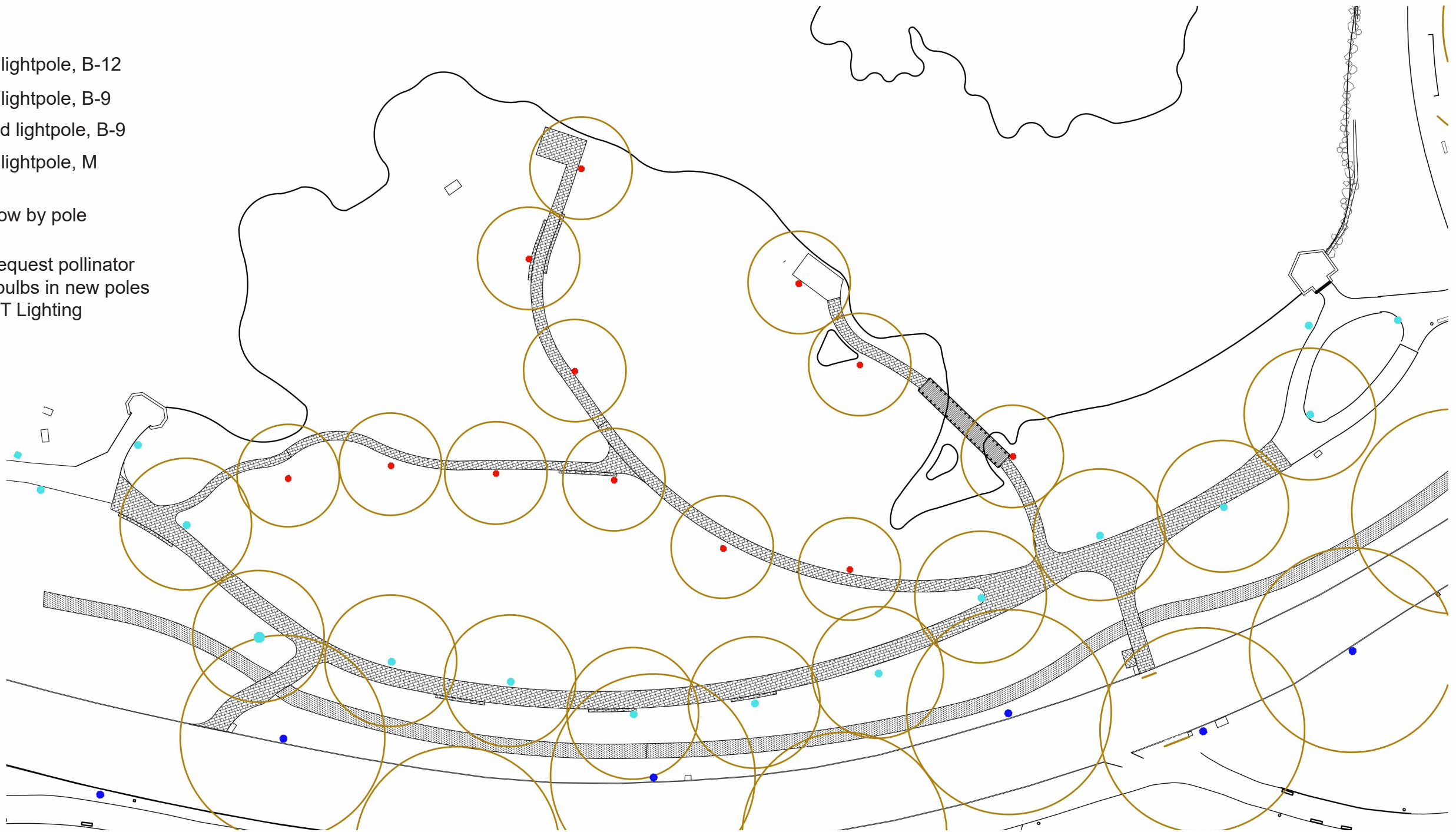
Decorative waste receptacle



B-9 Light pole

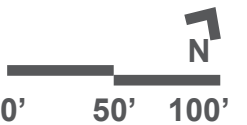
LEGEND

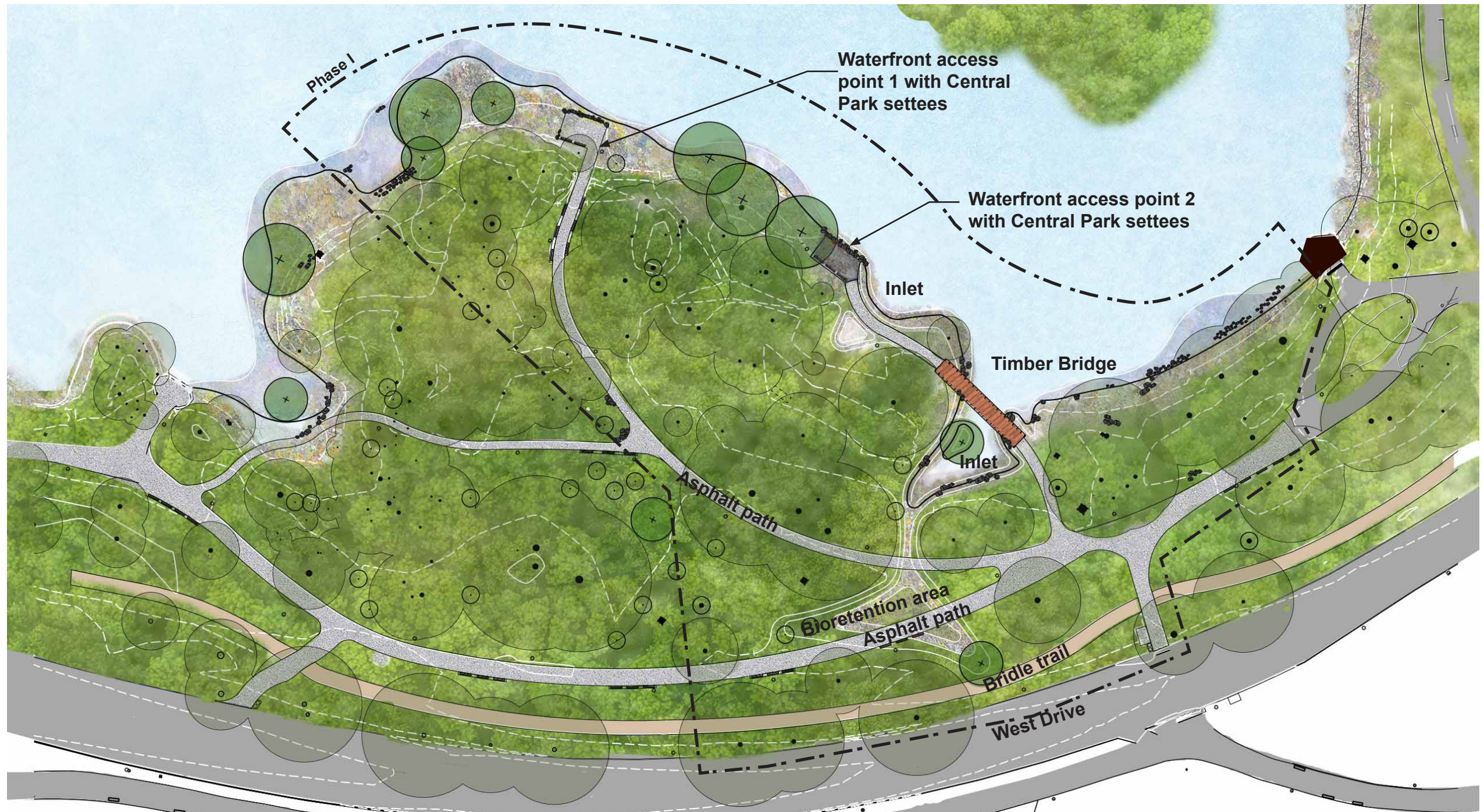
- Existing lightpole, B-12
 - Existing lightpole, B-9
 - Proposed lightpole, B-9
 - Existing lightpole, M
 - Light throw by pole
- NOTE:
PPA to request pollinator friendly bulbs in new poles from DOT Lighting



Prospect Park

Lakeshore Waterfront Restoration | Proposed Lighting Plan





NYC Parks



Prospect Park

Lakeshore Waterfront Restoration | Preliminary Phase 1 Plan

