

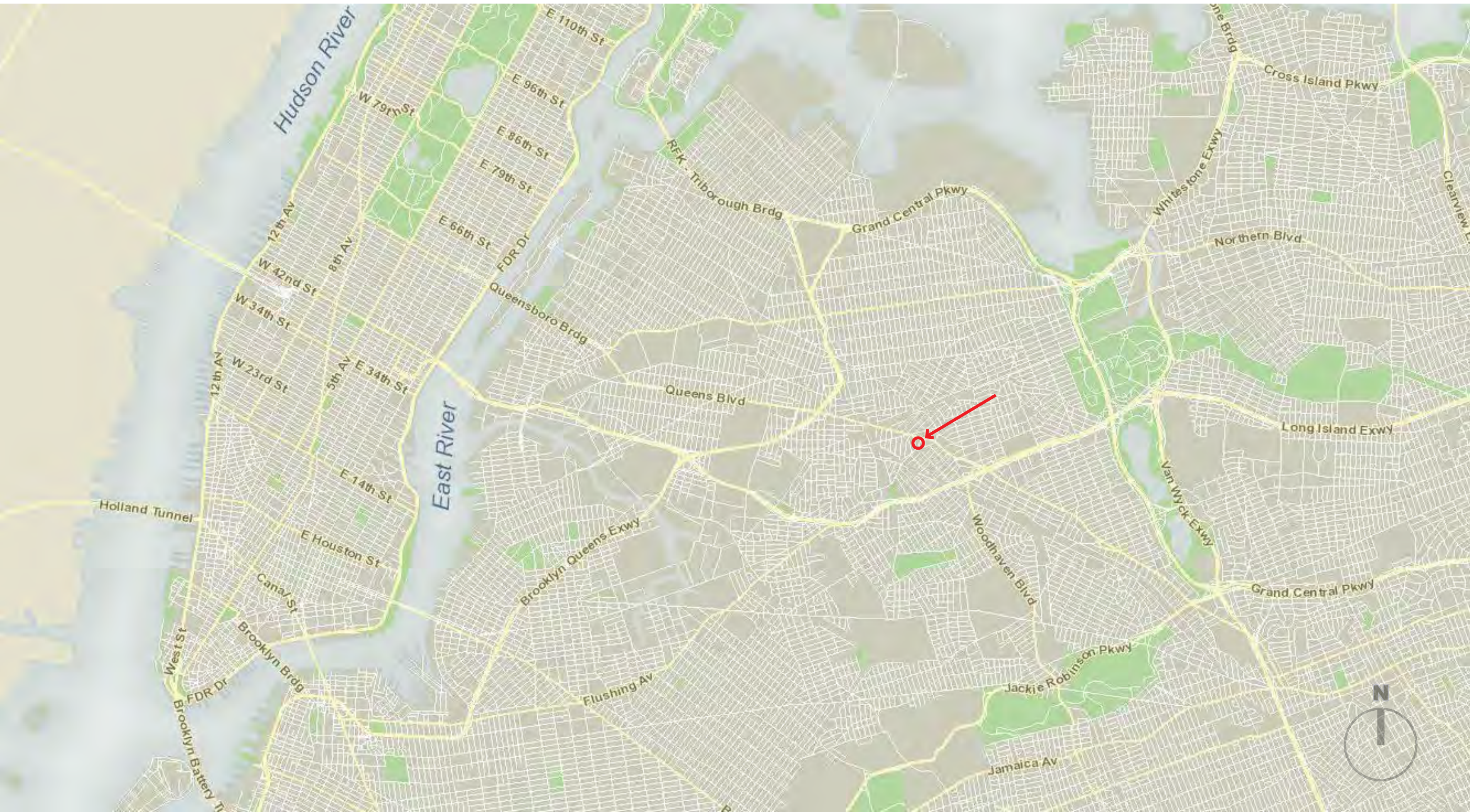
FDNY EC 287 / LC 136 / Batt 46 New Fire Station
86-53 Grand Avenue, Elmhurst

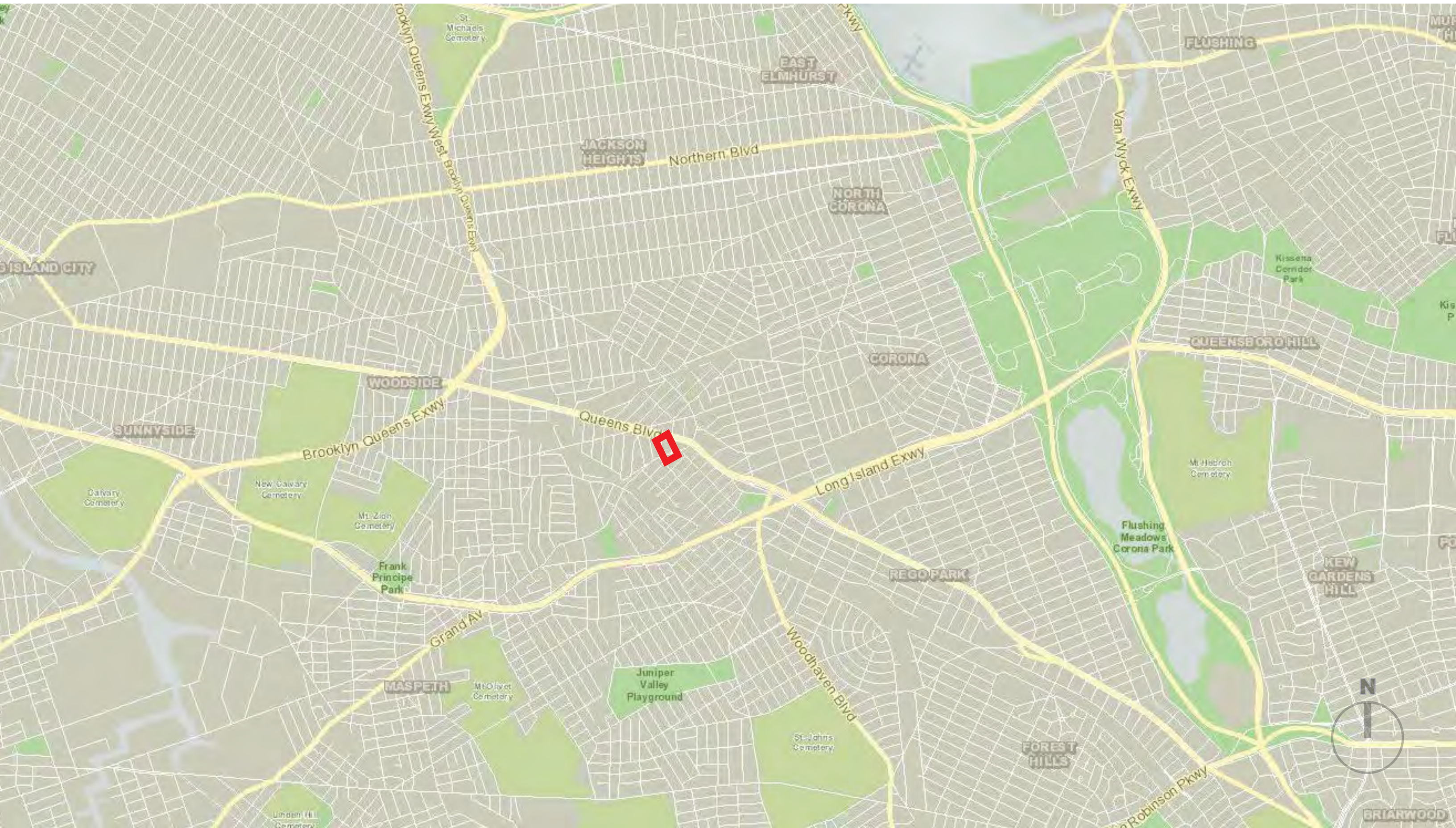
PDC Preliminary Review

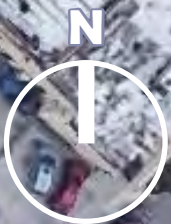
August 01 2022

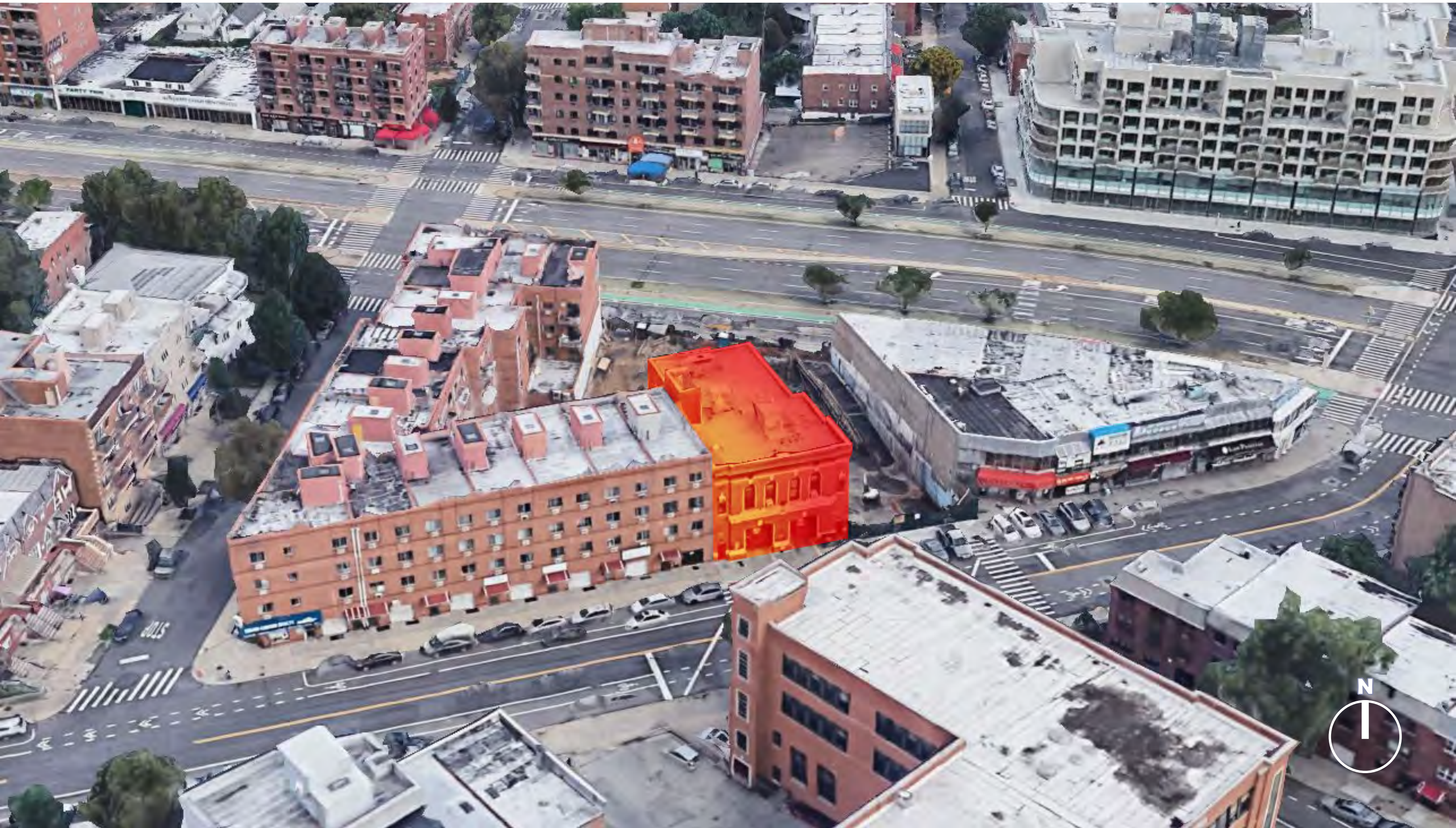
■ Ronnette Riley *Architect*







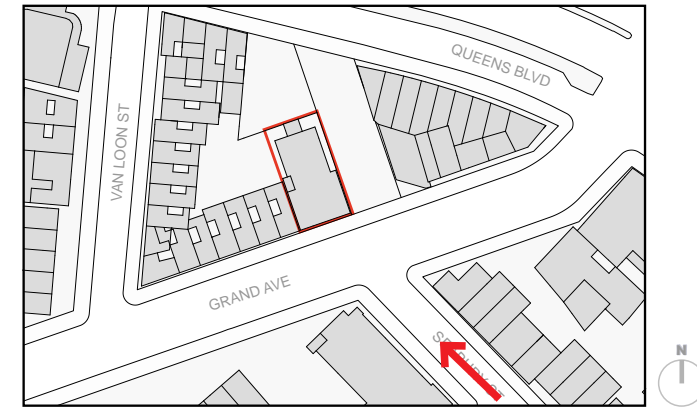
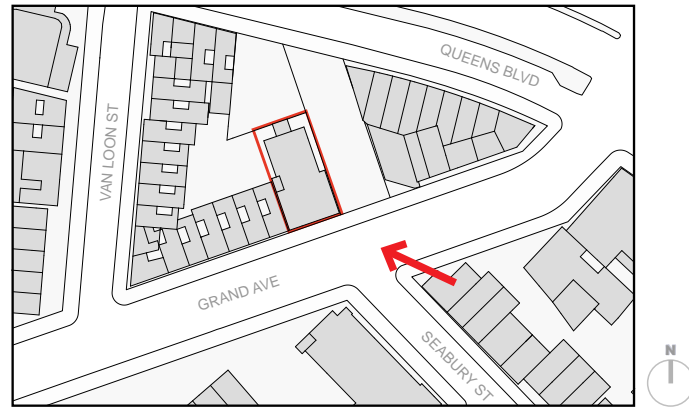




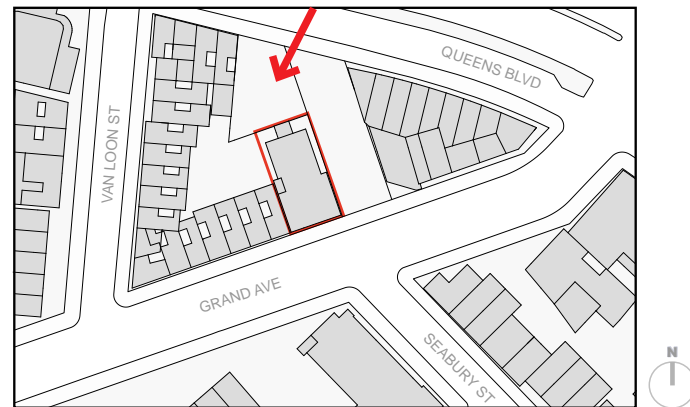
EXISTING SITE PHOTOGRAPHS



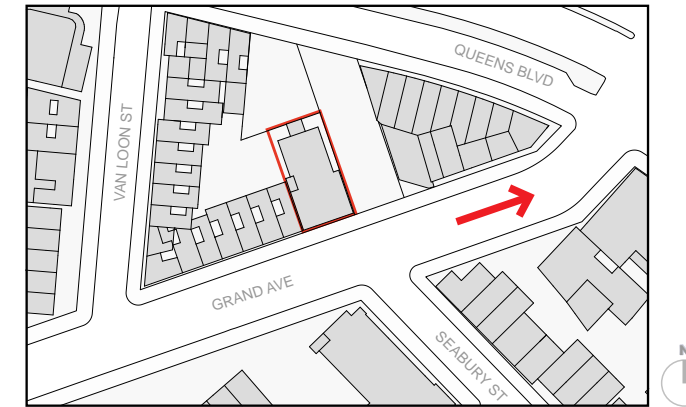
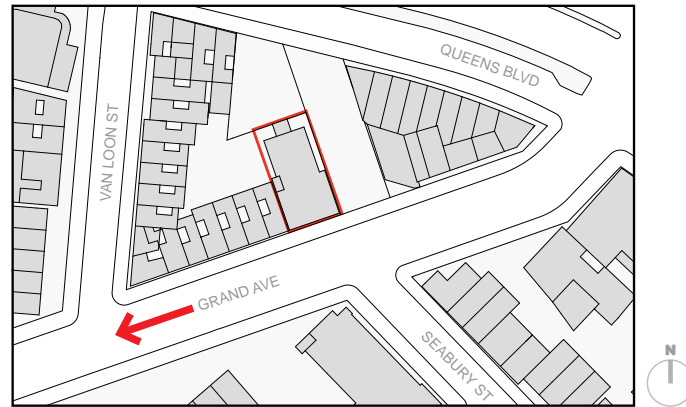
EXISTING SITE PHOTOGRAPHS



EXISTING SITE PHOTOGRAPHS



EXISTING SITE PHOTOGRAPHS



EXISTING FIREHOUSE



Photo 1 – Cellar – North Foundation Wall – Vertical Crack below the Pipe with Crack Gage #2



Photo 2 – Cellar – North Foundation Wall – Vertical Crack below Pipe with Enlarge Crack Gage #2



Photo 3 – West Elevation – Crack at the Apparatus Floor Window Overall View

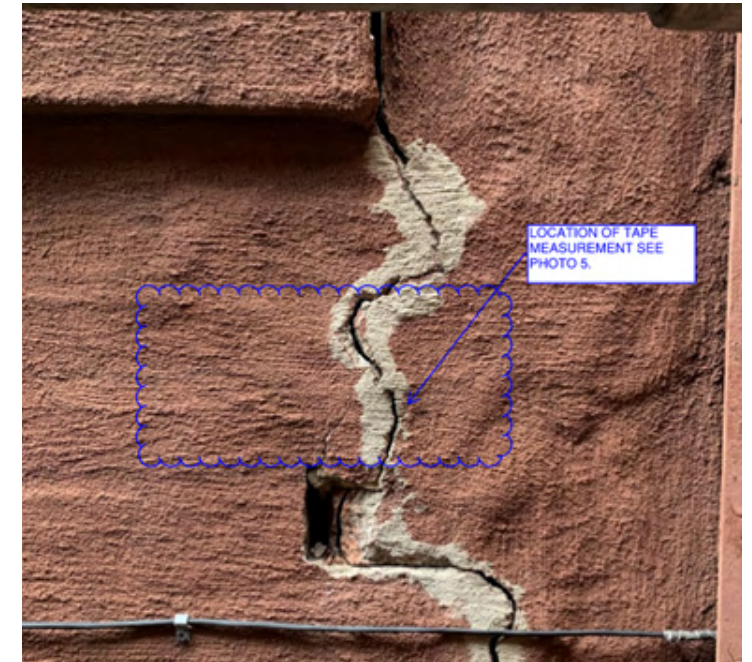


Photo 4 – West Elevation – Close-up Crack at the Apparatus Floor Window



Photo 5 –North Side Hose Tower - Vertical Crack at the Interior



Photo 6 –North Side of the Hose Tower -Diagonal Cracks at the Exterior



Photo 7 – West Elevation – Diagonal Cracks above the Kitchen Window

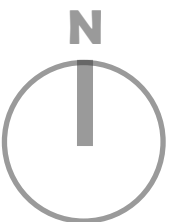


Photo 8 – West Elevation – Diagonal Cracks below the Kitchen Window (See Crack Gage on Photo 9)

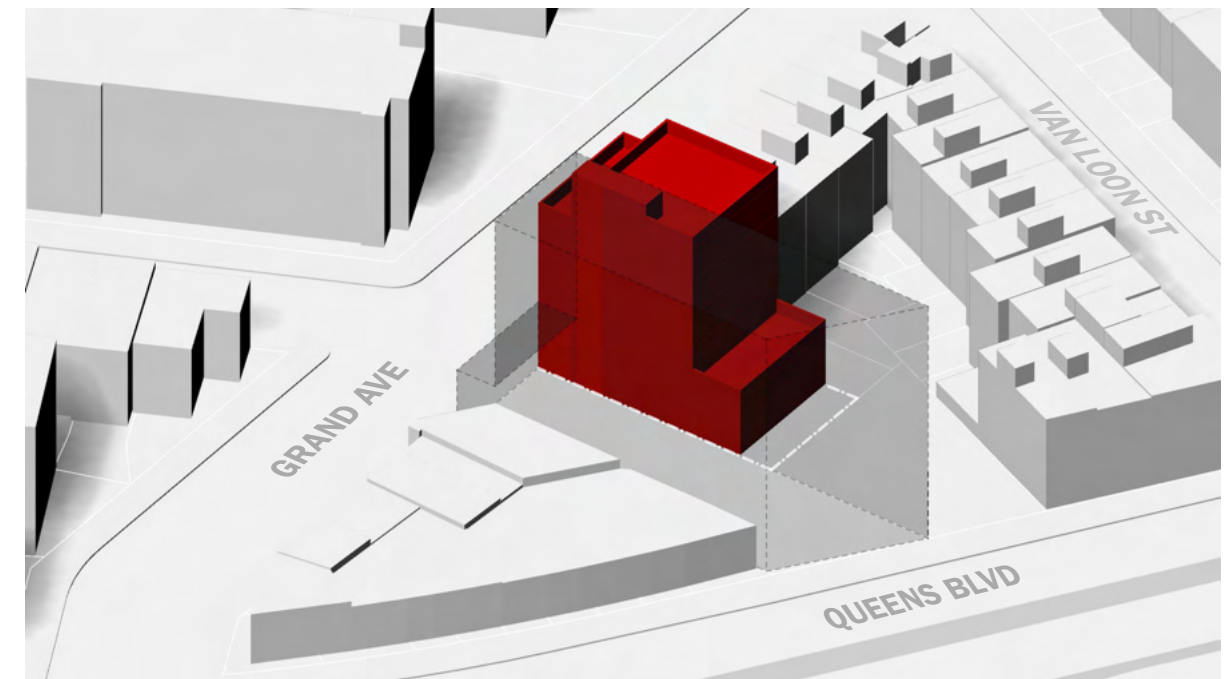
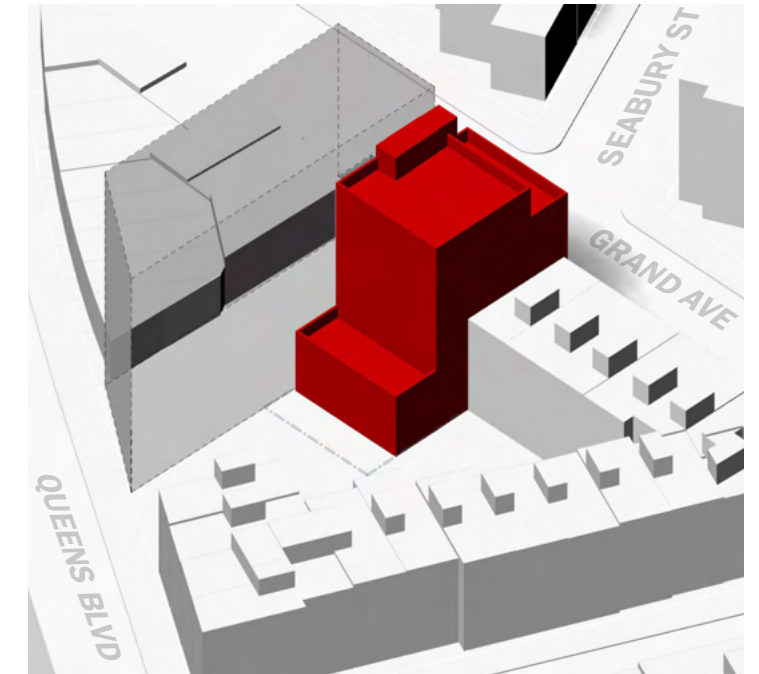
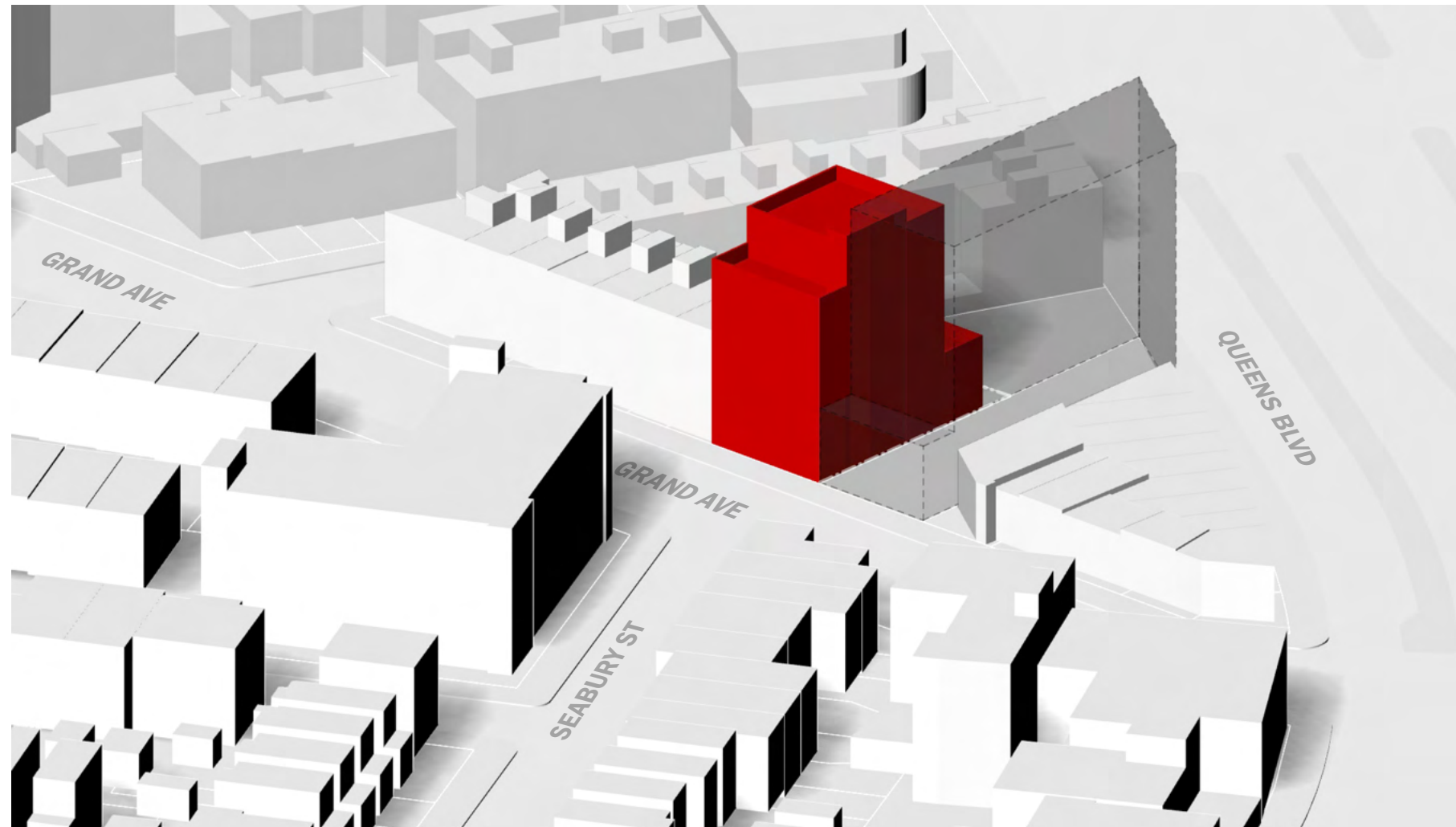
EXISTING SITE PLAN



PROPOSED SITE PLAN

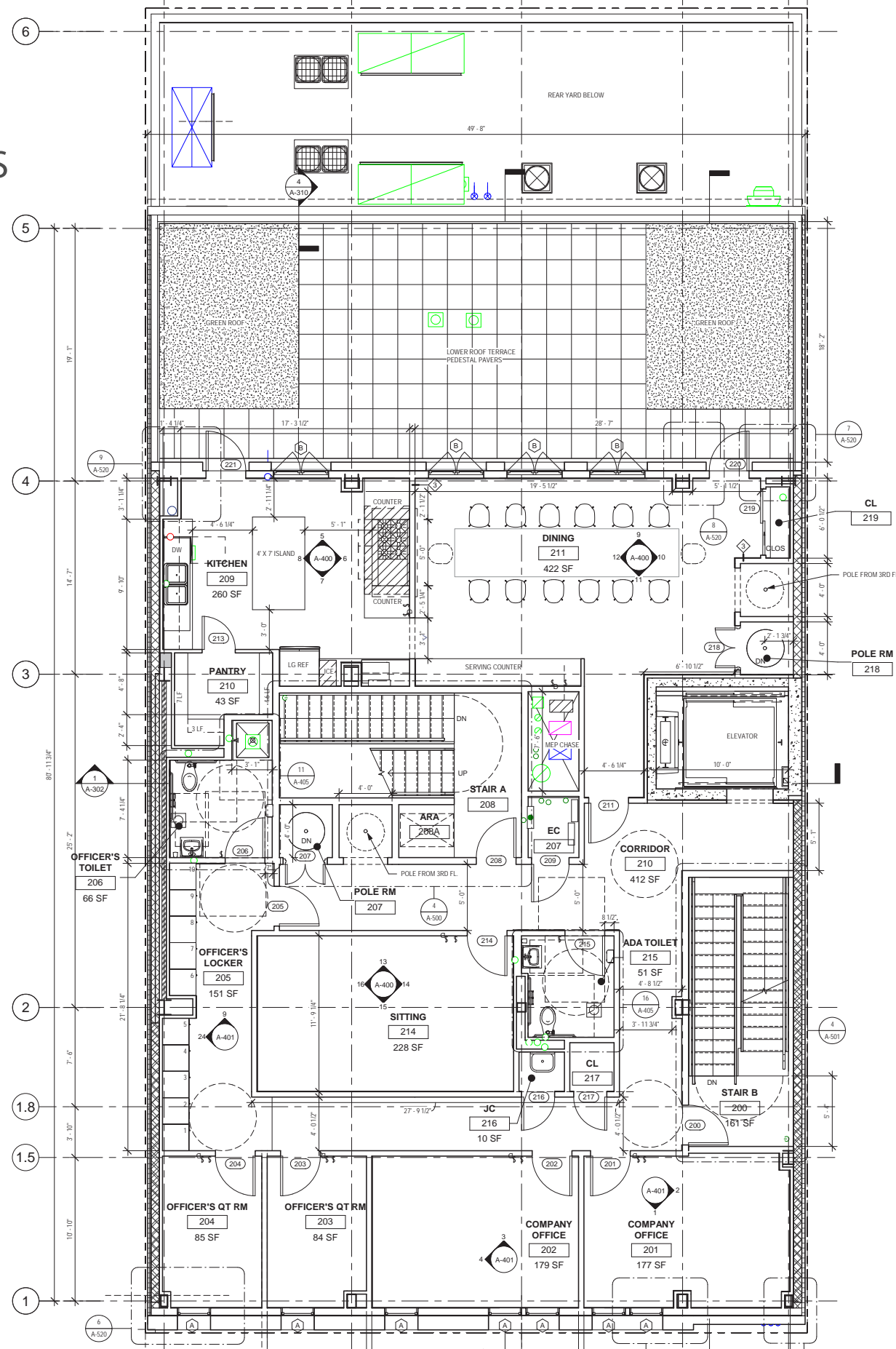


CONCEPTUAL & PRELIMINARY MASSING STUDY

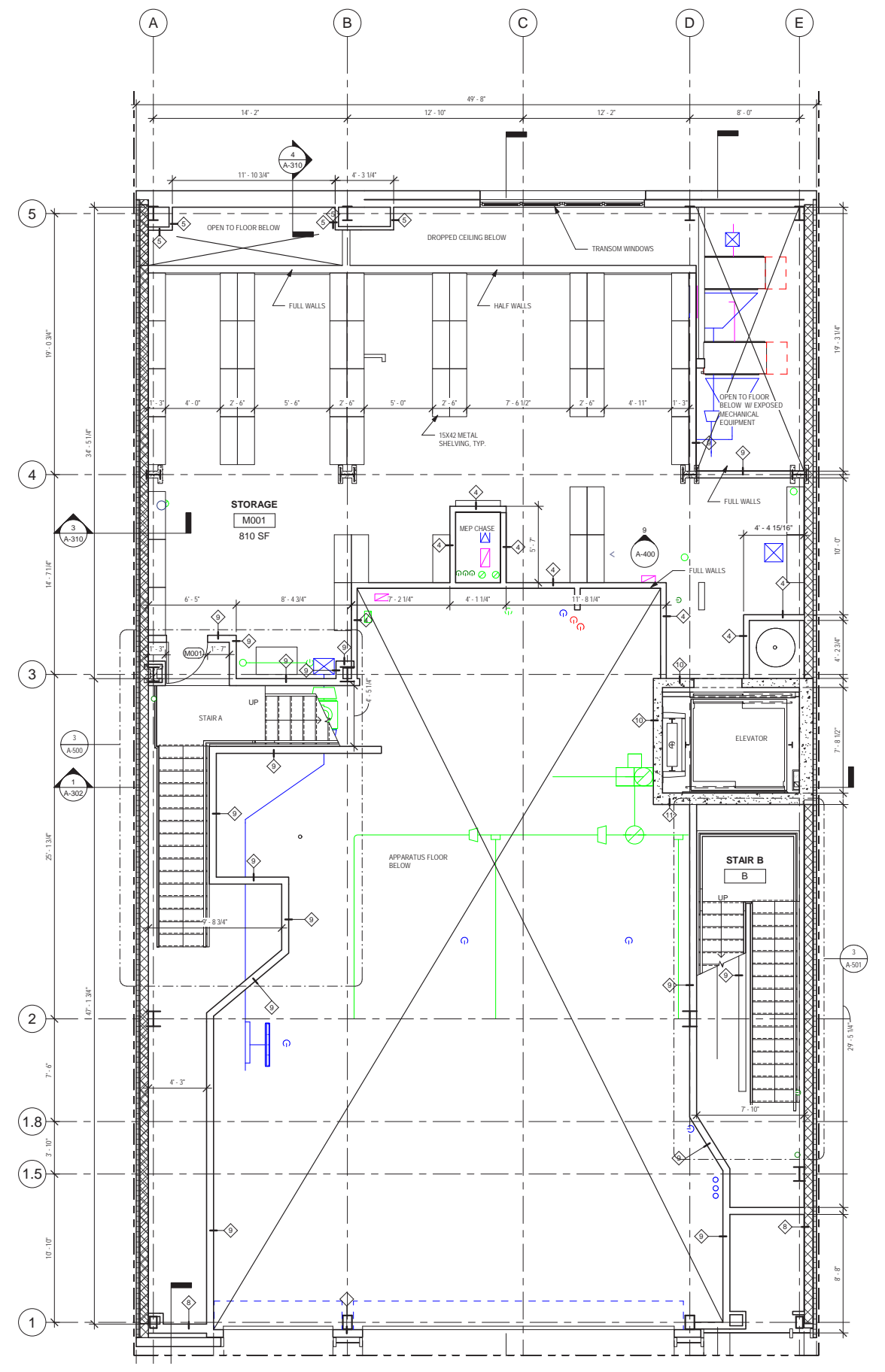


* THE GREY OUTLINED BUILDING ADJACENT TO THE FIRE STATION IS THE INTENDED BUILDING TO BE BUILT ON THE ADJACENT AND REAR LOTS. THE SIZE AND SHAPE OF THE BUILDING WAS SHARED WITH THE FIRE DEPARTMENT WHEN THE ADJACENT CONSTRUCTION COMMENCED.

PRELIMINARY
SUBMISSION -
PROPOSED PLANS

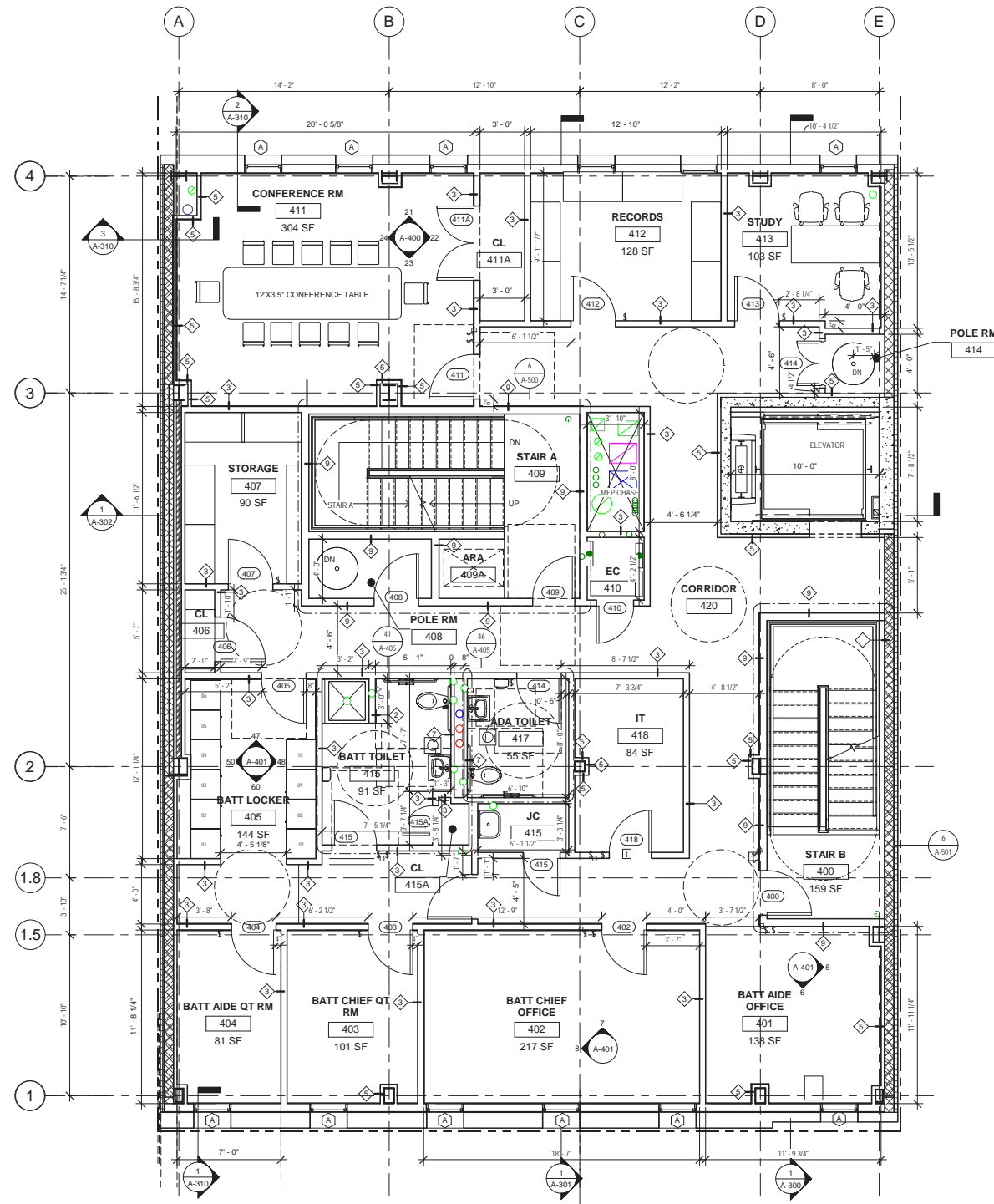


2 2ND FLOOR PLAN
3/32" = 1'-0"

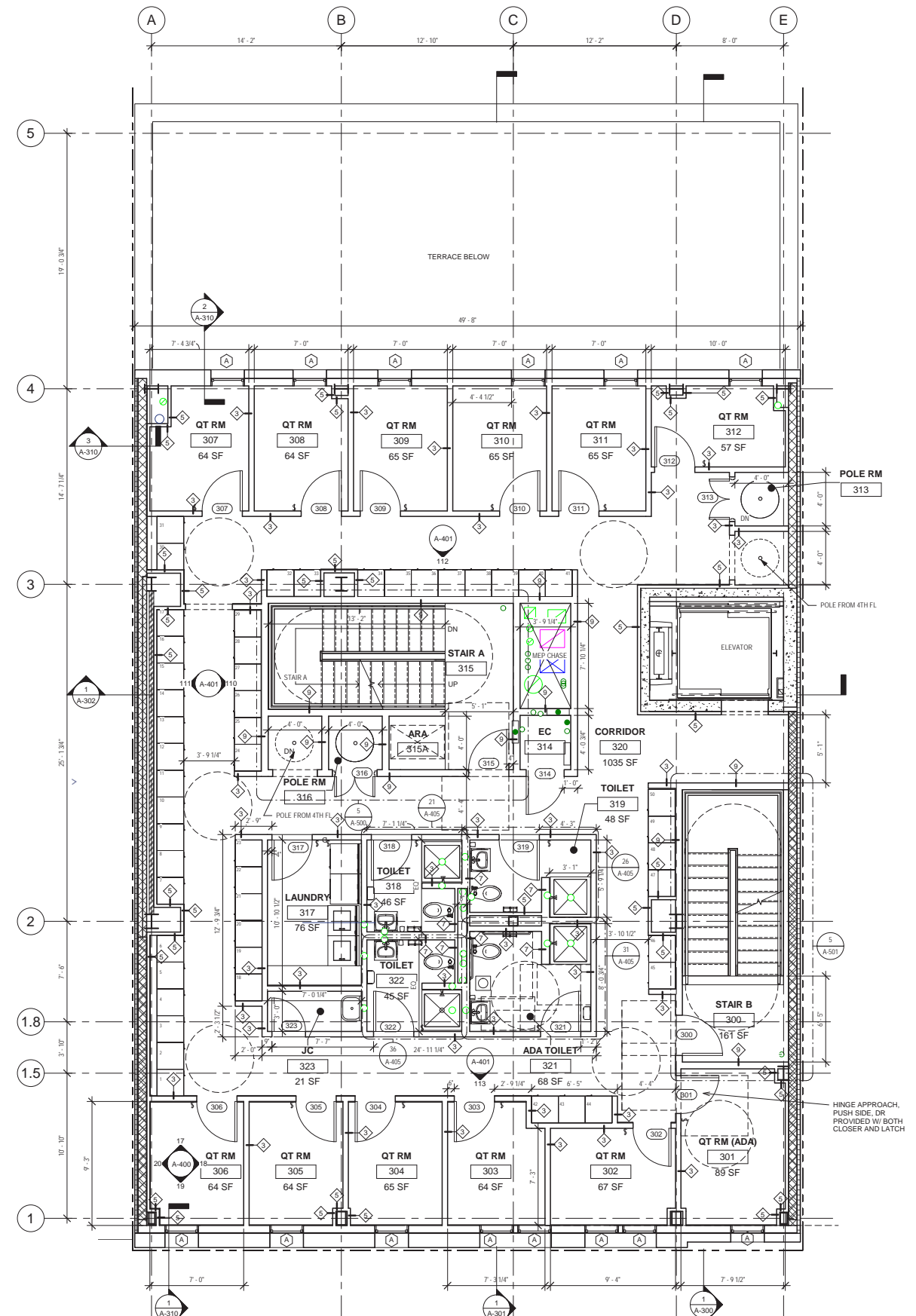


1 MEZZANINE
3/32" = 1'-0"

PRELIMINARY SUBMISSION - PROPOSED PLANS

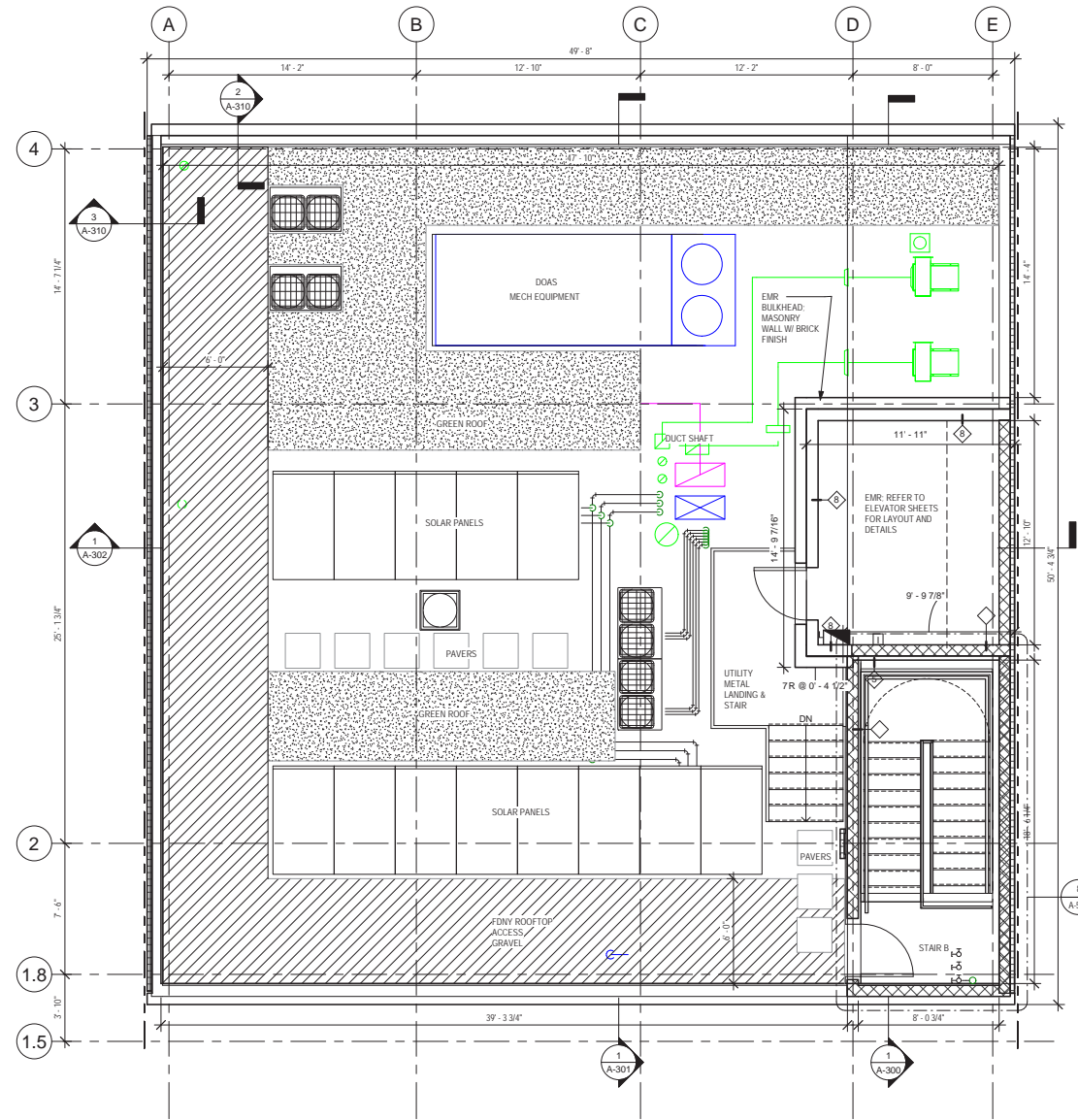


② 4TH FLOOR PLAN
3/32" = 1'-0"

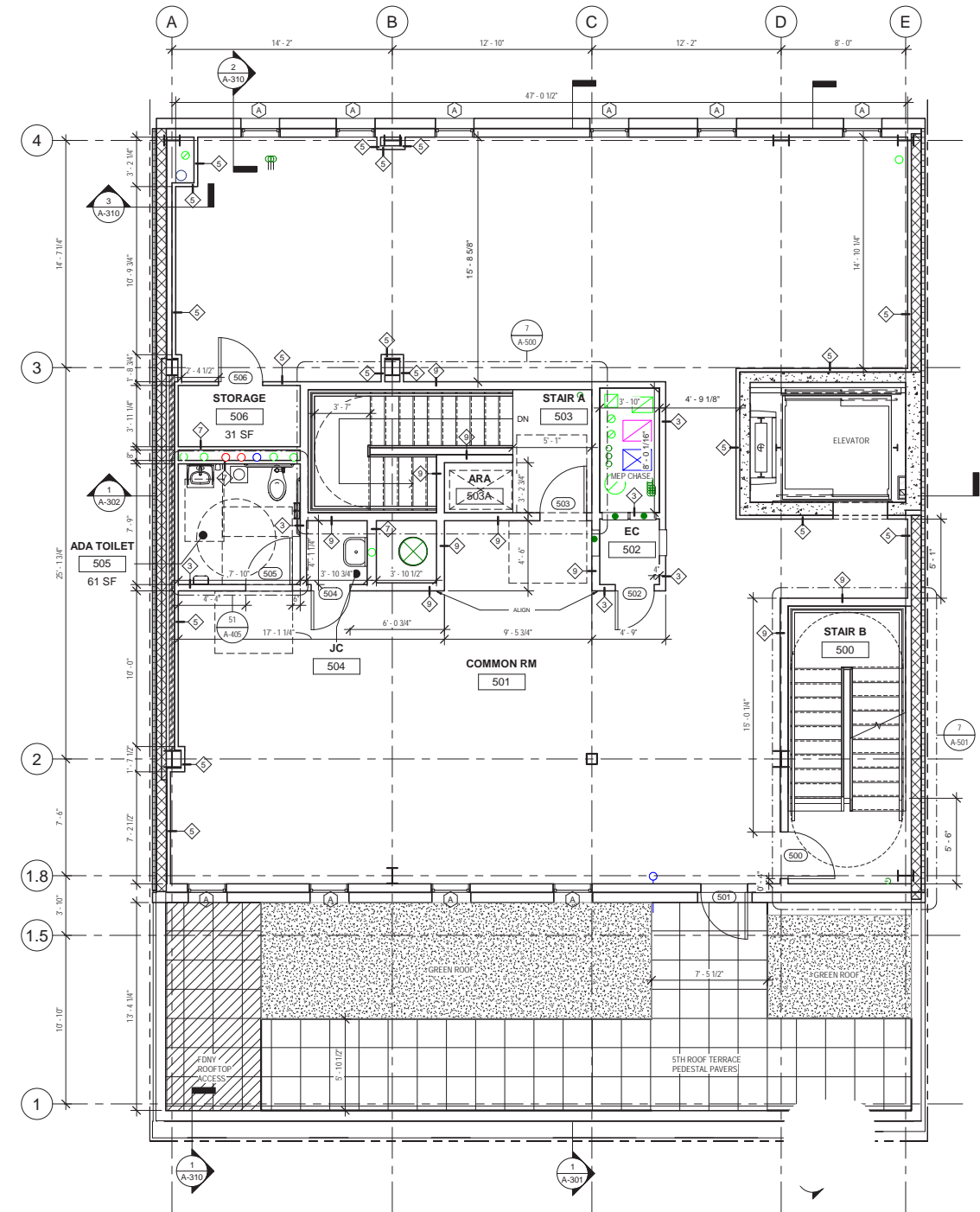


① 3RD FLOOR PLAN
3/32" = 1'-0"

PRELIMINARY SUBMISSION - PROPOSED PLANS

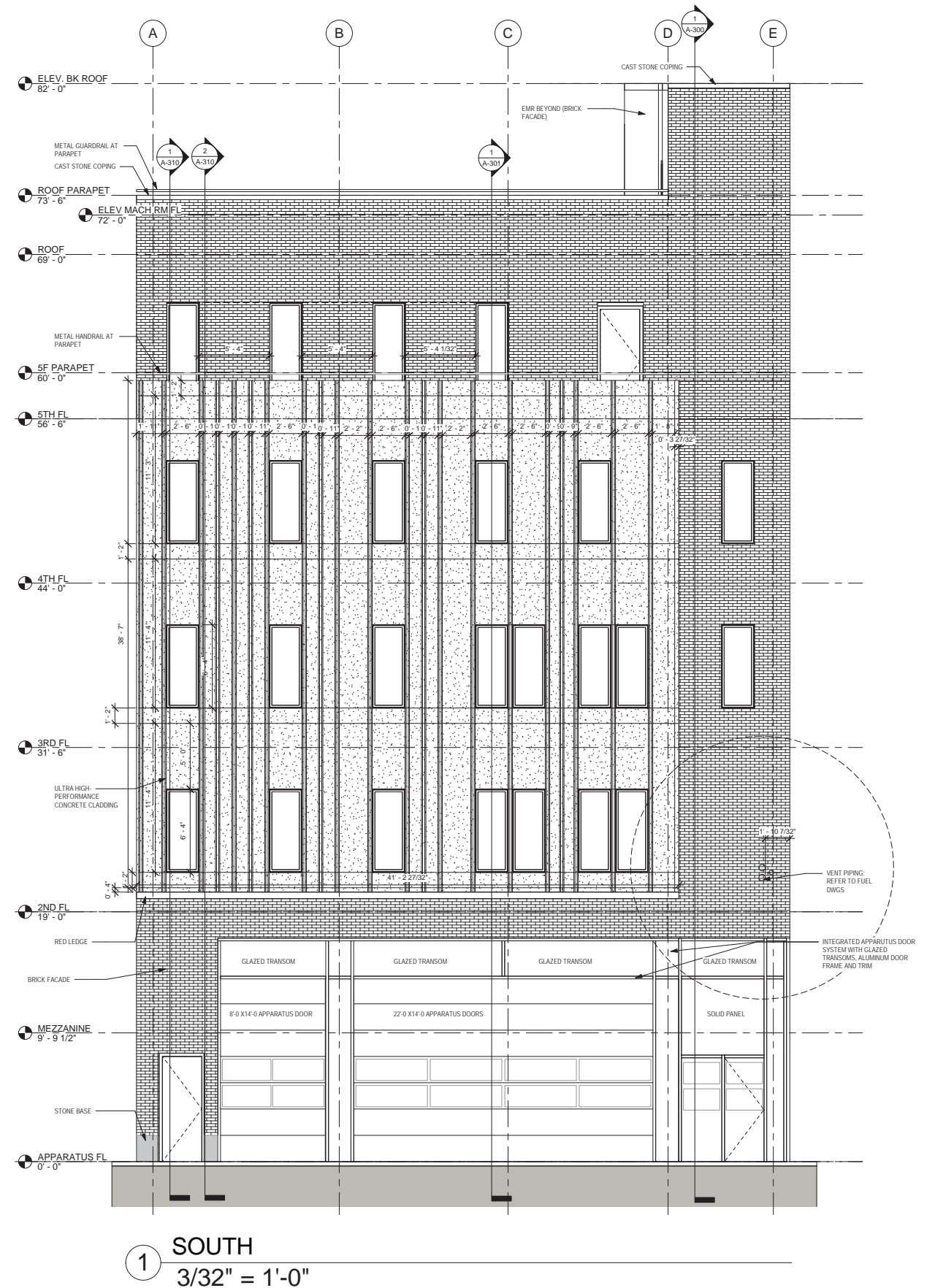
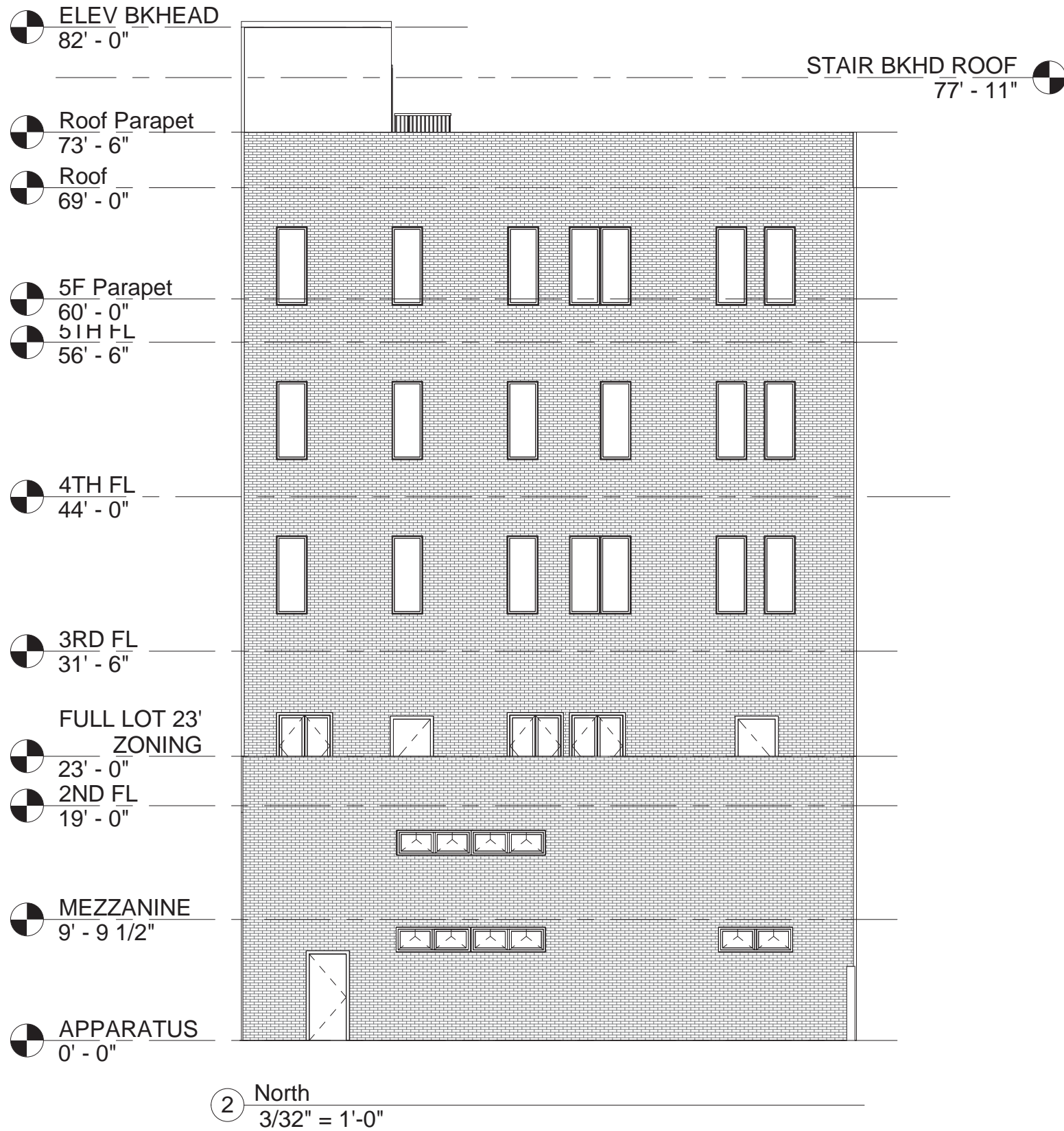


2 ROOF PLAN
3/32" = 1'-0"

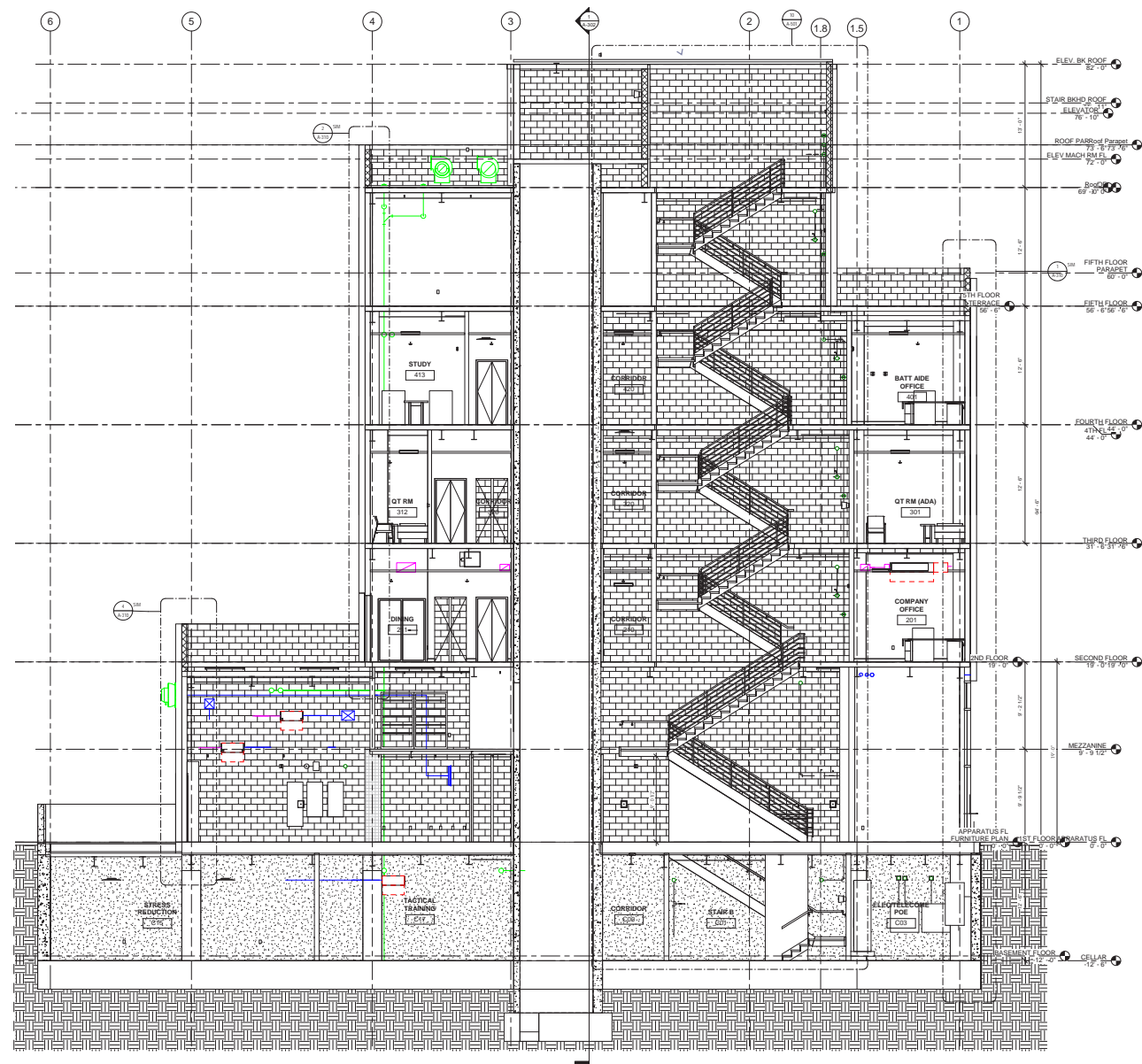


1 5TH FLOOR PLAN
3/32" = 1'-0"

PRELIMINARY SUBMISSION - PROPOSED ELEVATIONS



PRELIMINARY SUBMISSION - SECTION & ELEVATION



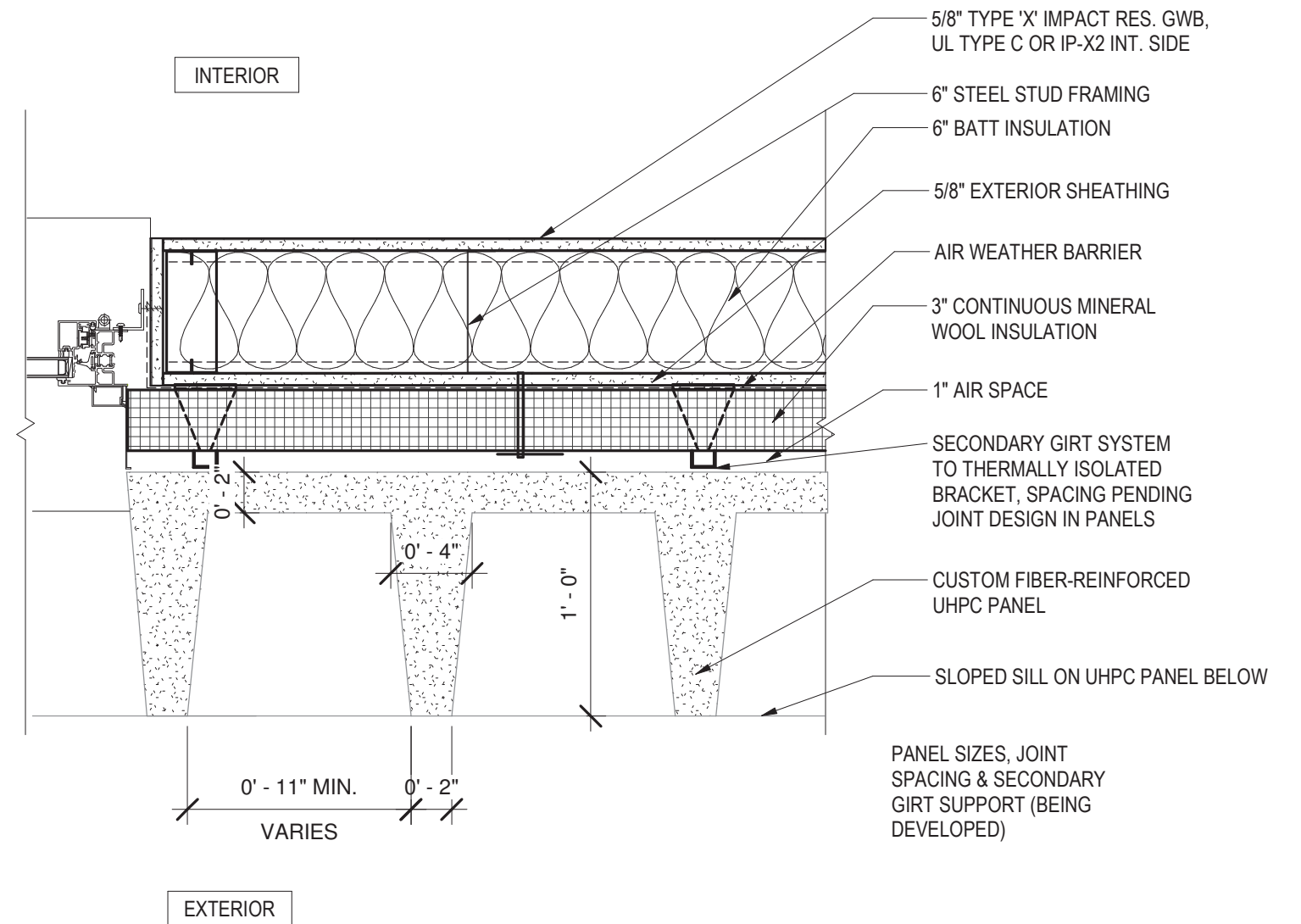
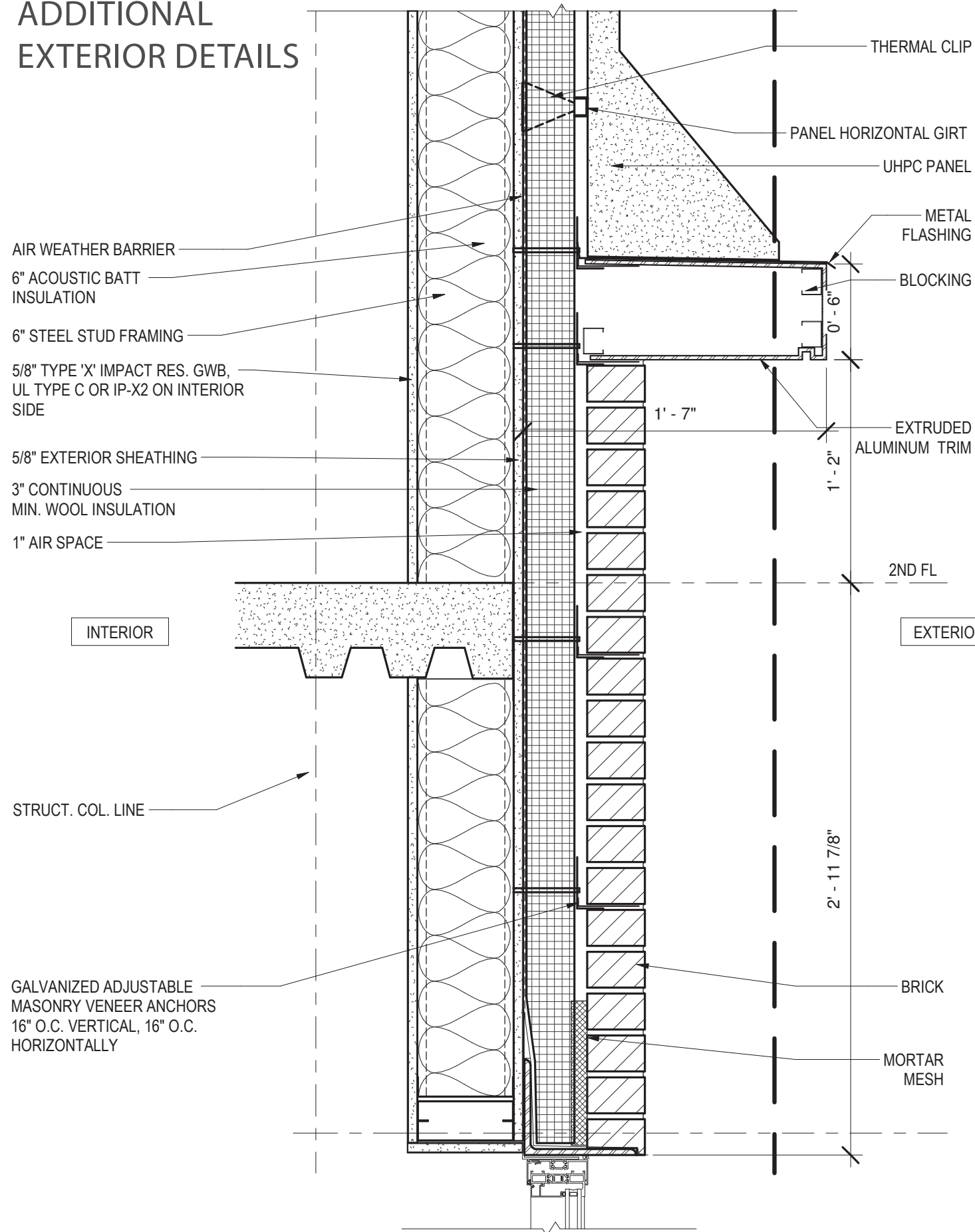
2 BUILDING SECTION
1/16"=1'-0"

- T.O. PARAPET +71'-6"
- T.O. ROOF +67'-0"
- T.O. PARAPET +60'-0"
- 5TH FL +55'-0"
- 4TH FL +43'-0"
- 3RD FL +31'-0"
- 2ND FL +19'-0"
- APPARATUS +0'-0"



1 BUILDING ELEVATION
1/16"=1'-0"

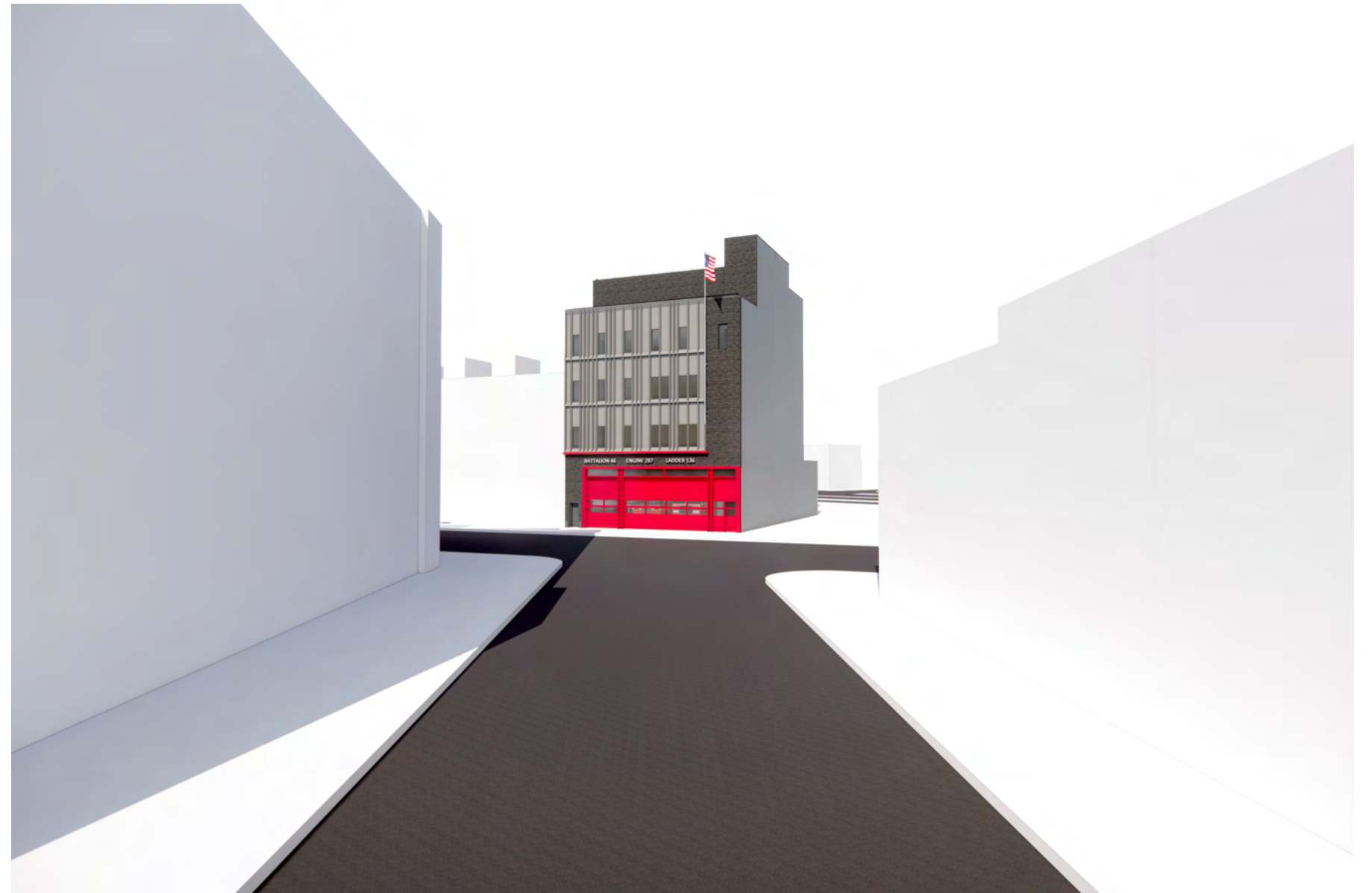
ADDITIONAL EXTERIOR DETAILS



PRELIMINARY SUBMISSION - VIEW FROM SEABURY ST.



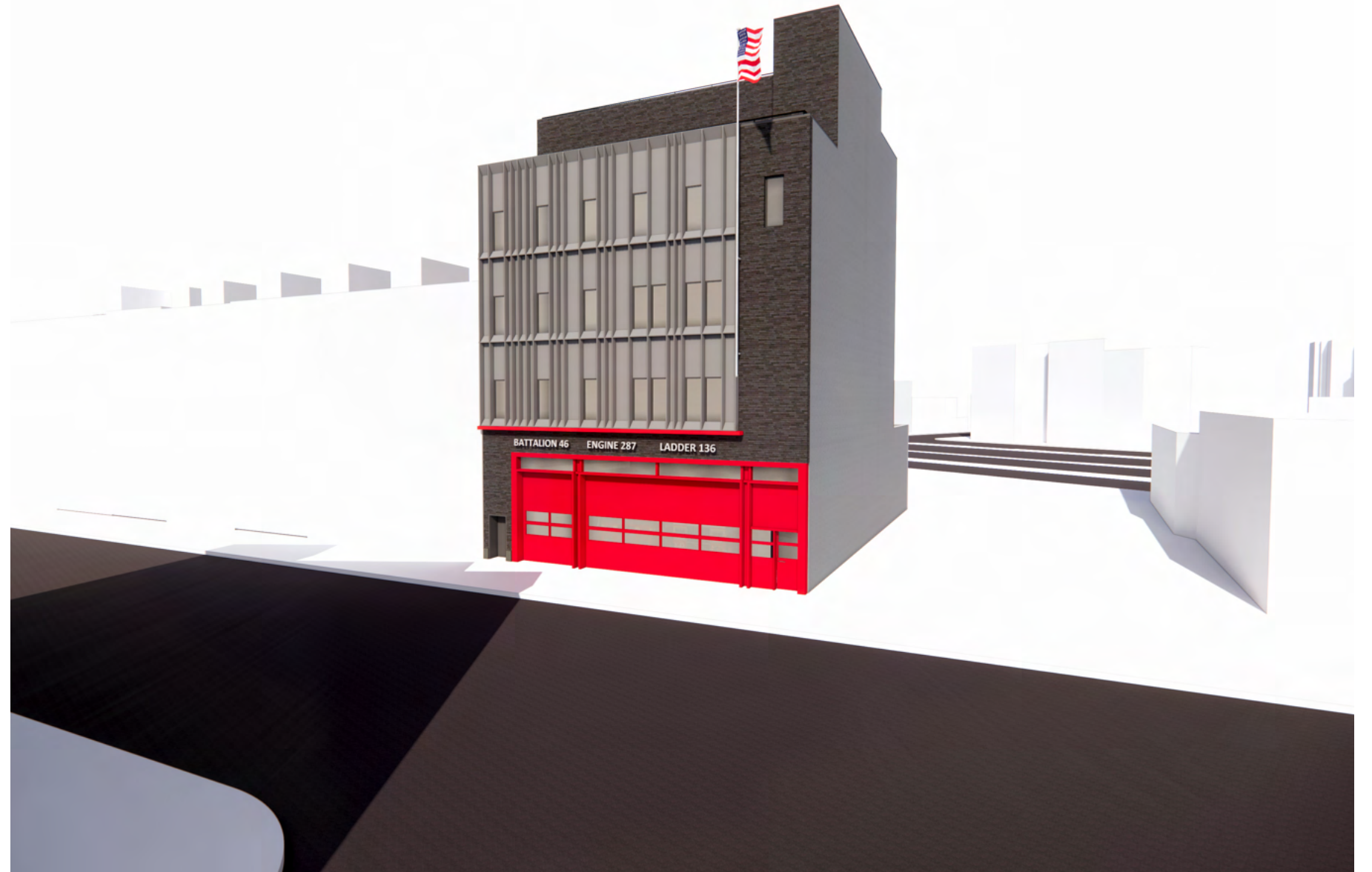
PHOTO 1



PRELIMINARY SUBMISSION - VIEW FROM SEABURY ST. & GRAND AVE.



PHOTO 2



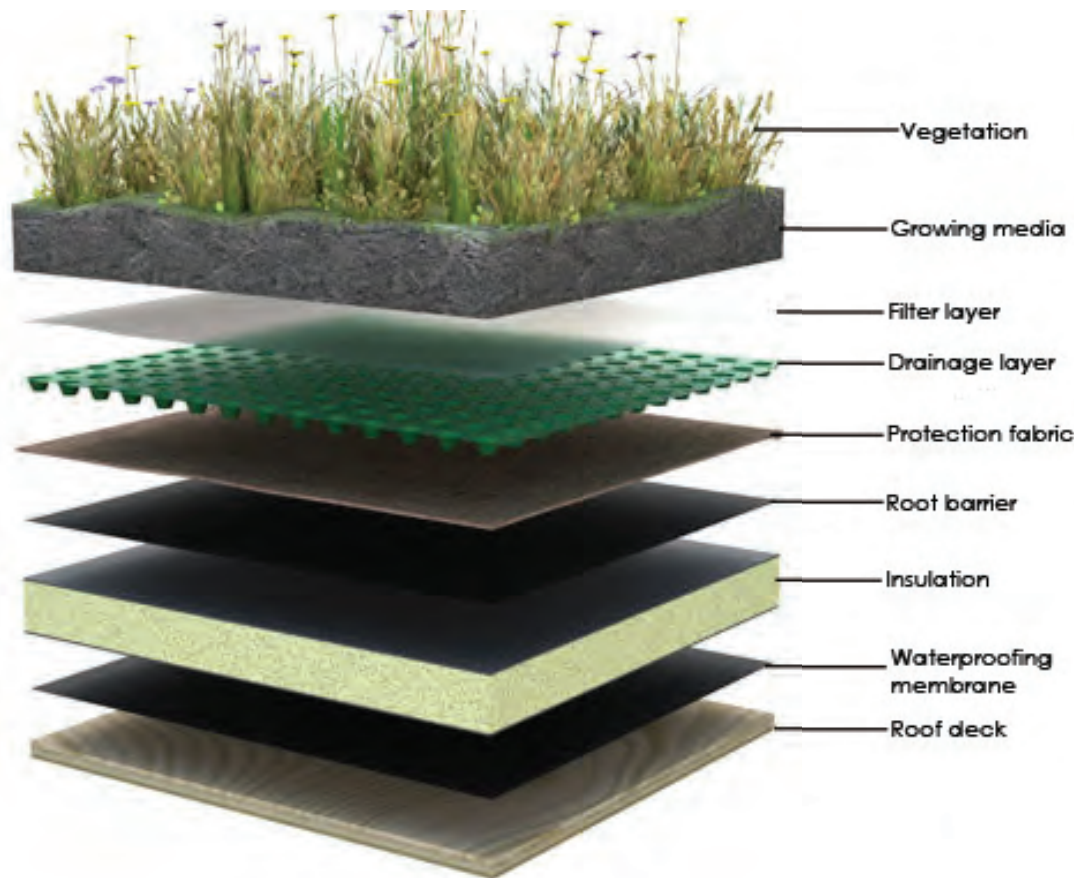
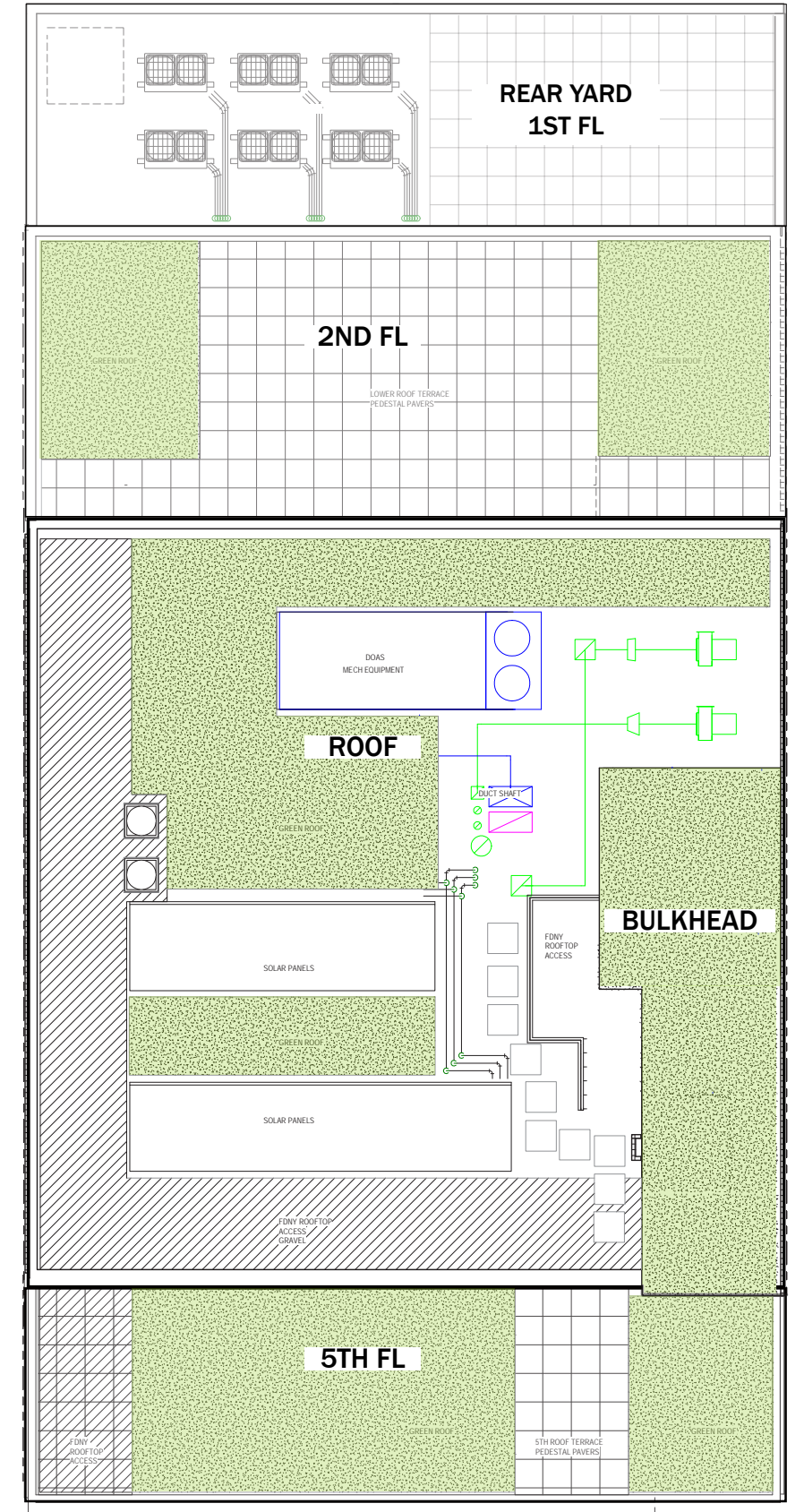
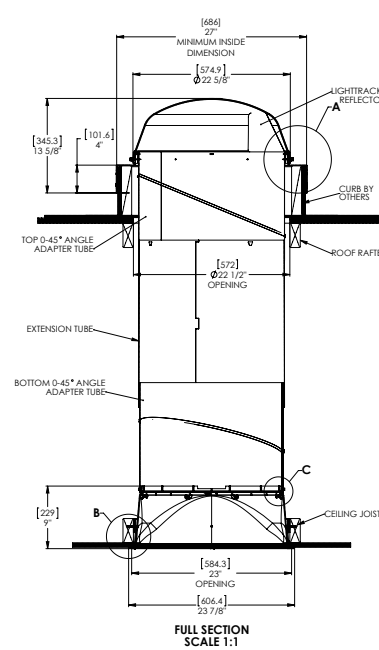
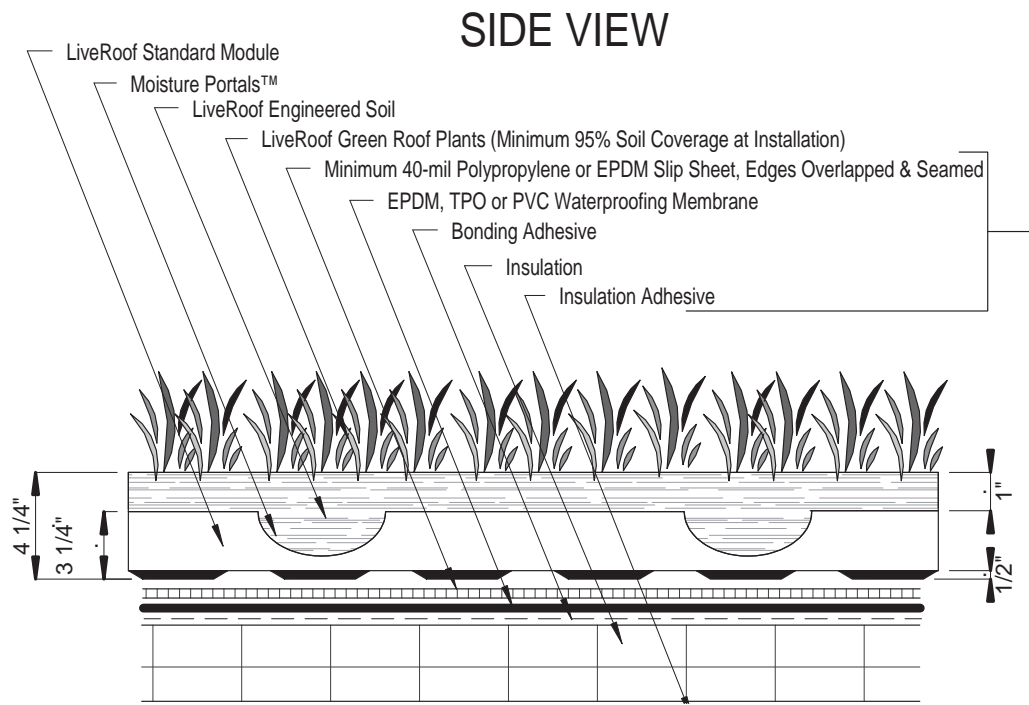
PRELIMINARY SUBMISSION - GRAND AVE.



PHOTO 3



PRELIMINARY SUBMISSION - GREEN ROOF ASSEMBLY & LANDSCAPE



Sedum Cauticola



Sedum Lineare Variegatum



Sedum Angelina



Sedum Reflex Angelina



PRELIMINARY SUBMISSION - MATERIALS



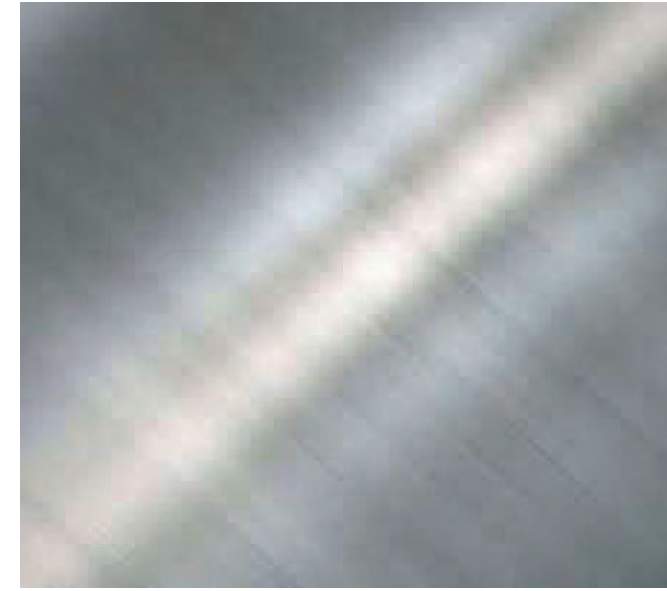
Aluminum Coating Matching
Pantone 185 C



Cladding - Titanium
Smooth



Brick - Manganese Ironspot
Velour



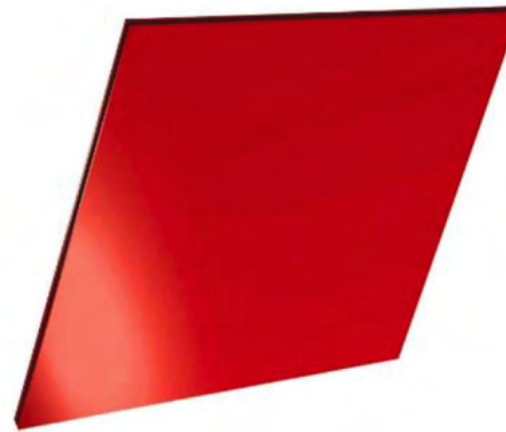
Flag Pole



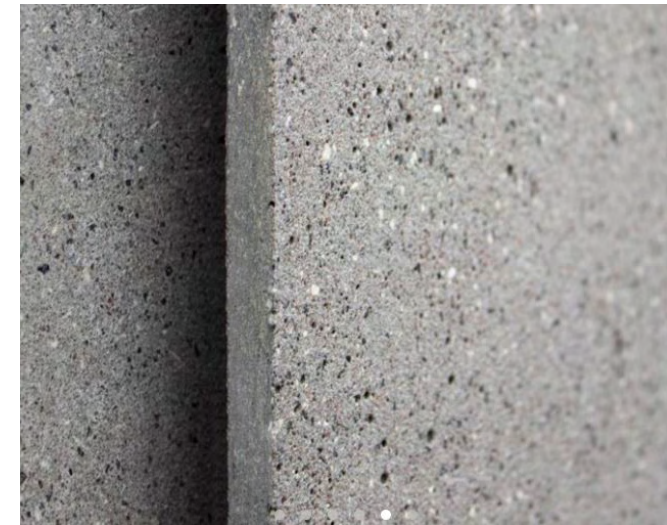
Example of the RESCUE 2 signage
showing - Angsana New font



Pin Mounted Letter
Signage - Angsana New Font



Garage Door



UHPC

PRELIMINARY SUBMISSION - MATERIAL BOARD

