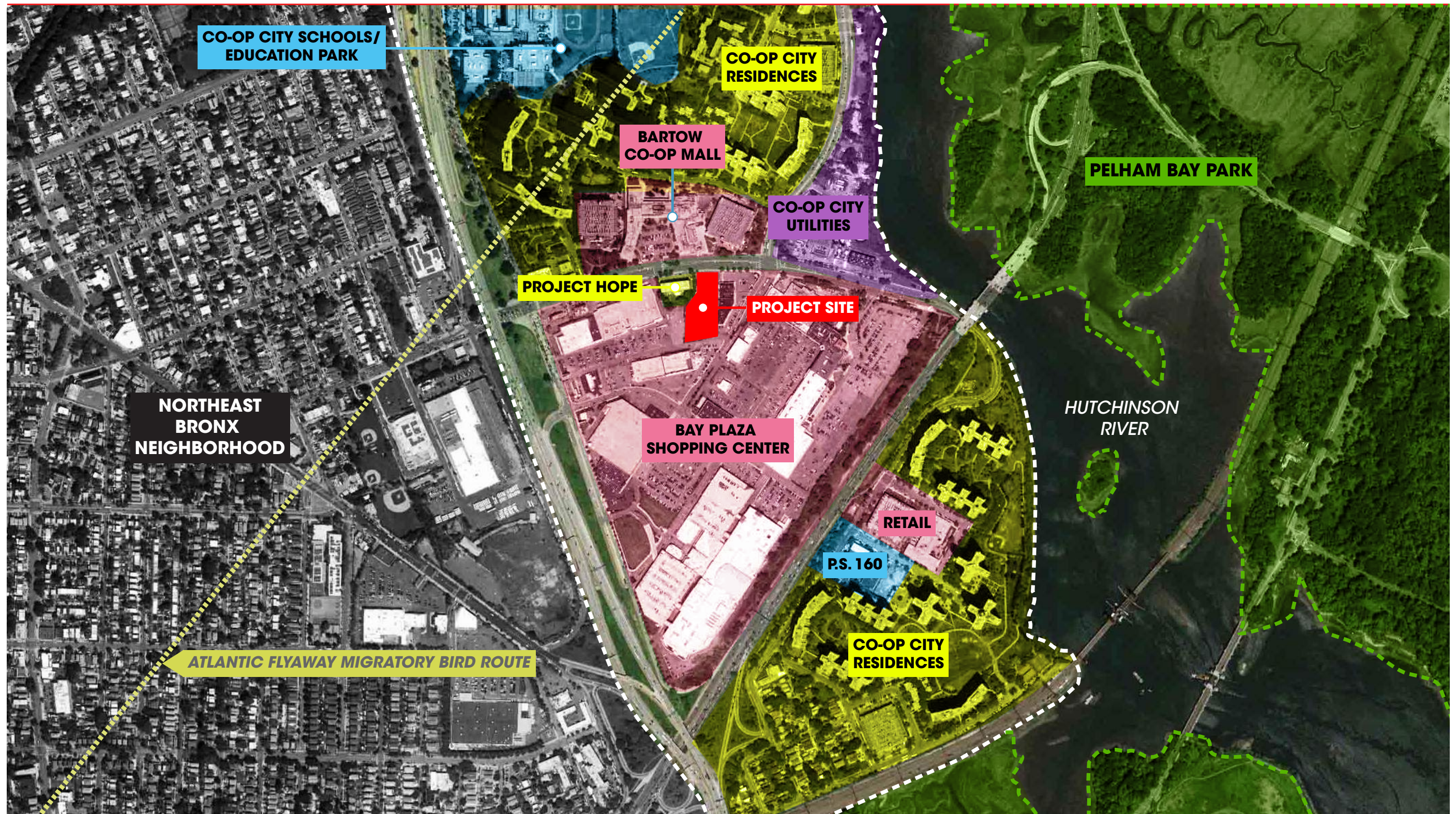




Bronx Animal Care Center & Veterinary Clinic





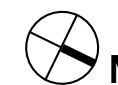
LEGEND





LEGEND

 PROJECT SITE

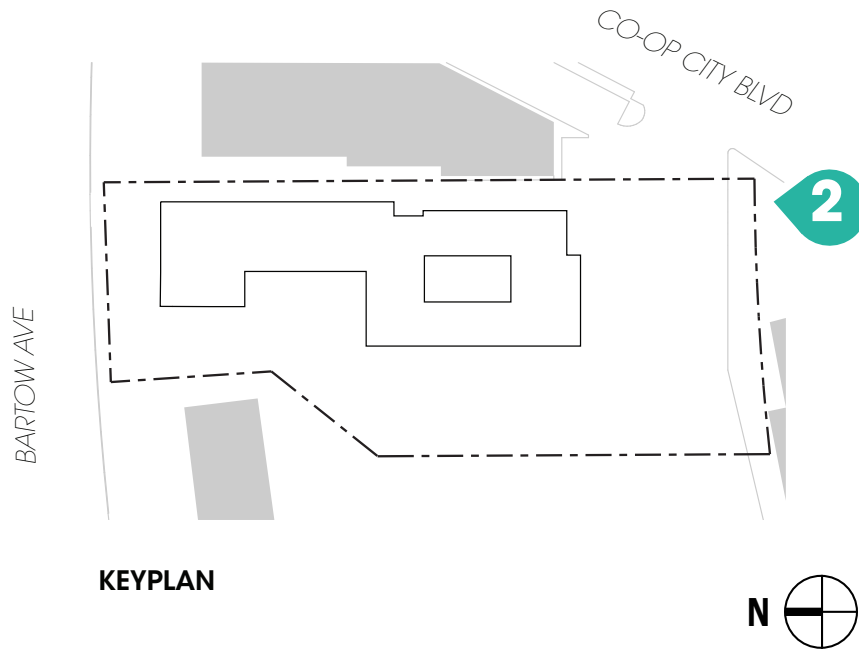




Bartow Avenue street elevation



View from Co-Op City Blvd approaching the mall access road



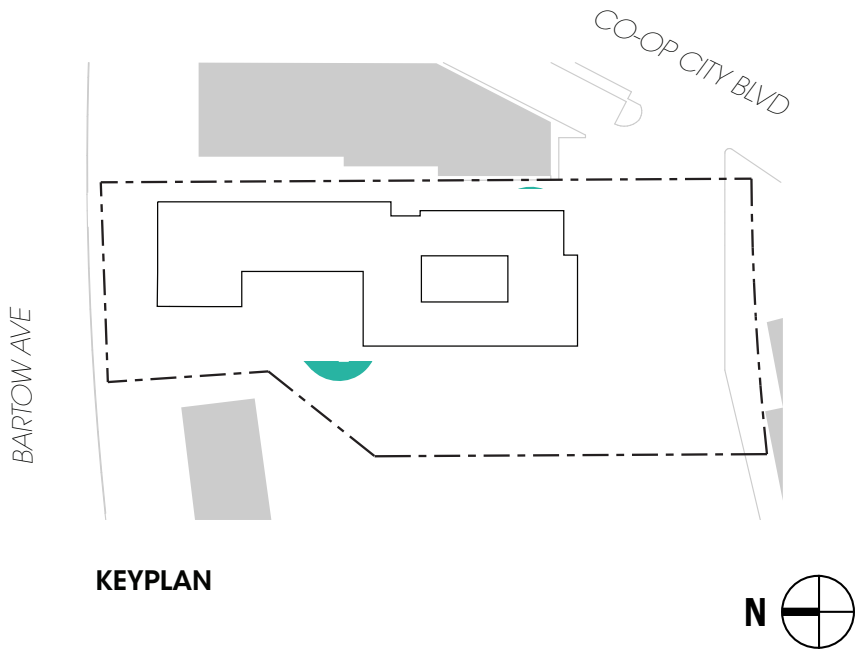
KEYPLAN



View from Bay Plaza shopping parking facing east towards the site



View within project site facing northwest



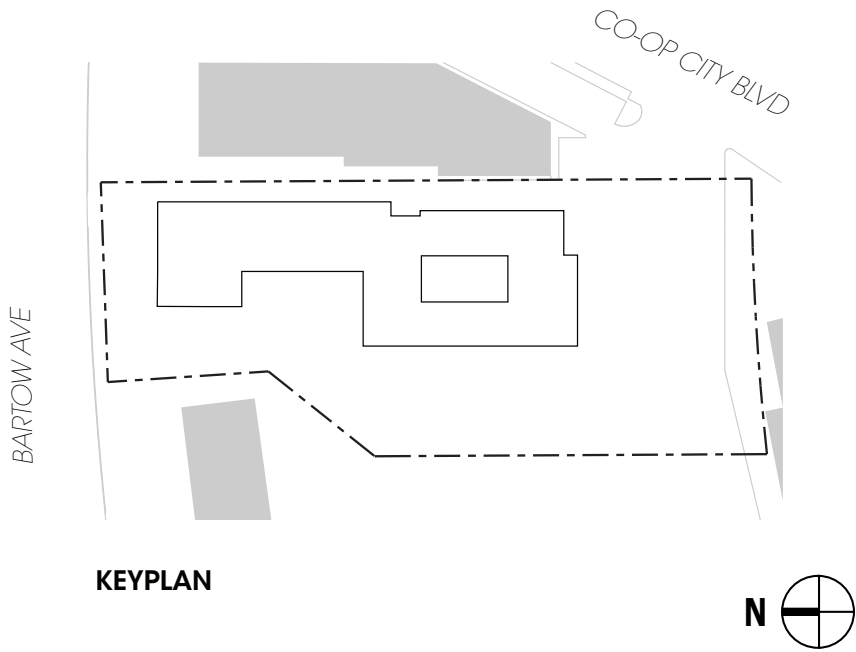
KEYPLAN



View within project site facing east



View within project site facing southeast



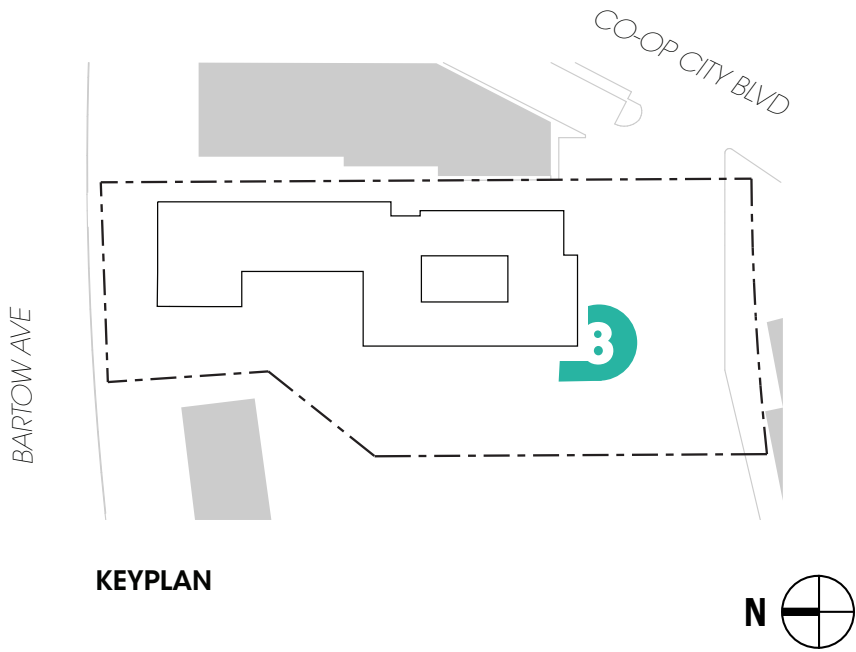
KEYPLAN



View within project site facing south



View within project site facing west

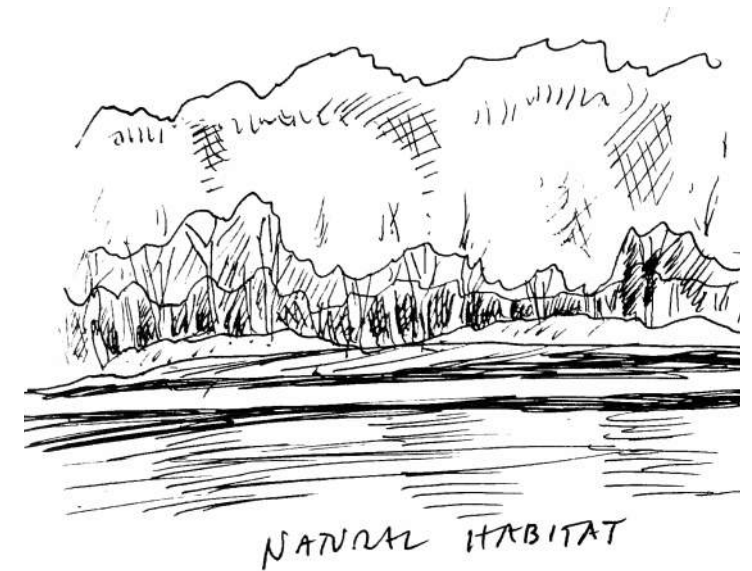
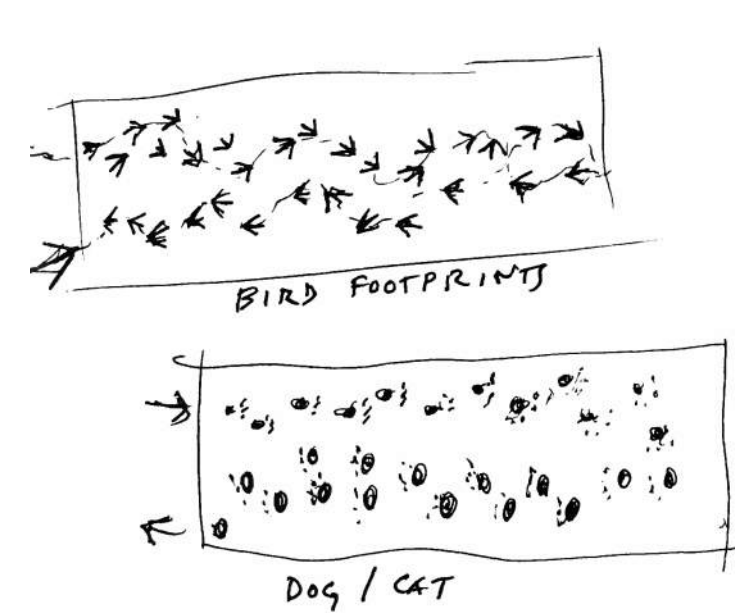
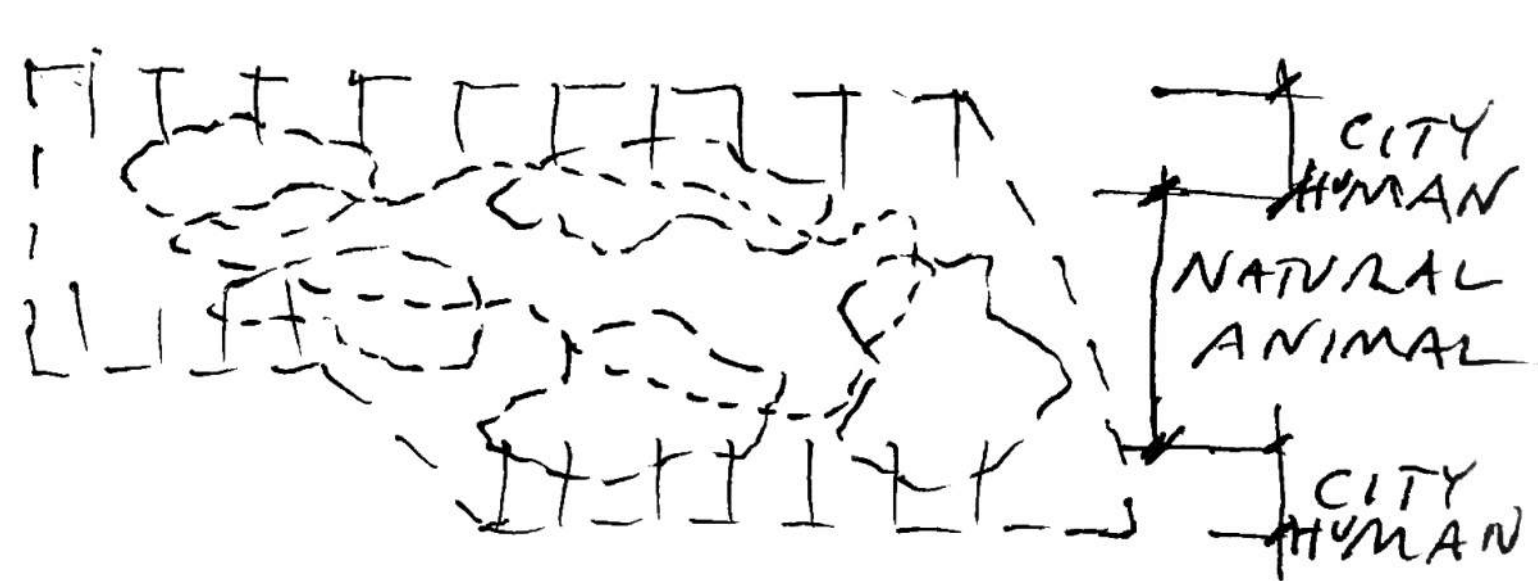


KEYPLAN



Split Rock is a glacial boulder, divided in half with a large crevice between the two pieces, and is an important part of the history of Pelham Bay Park and the Bronx. It was in this gap that Anne Hutchinson and her daughter, Susannah, supposedly hid during the attack of the Siwanoy Native American tribe in 1643.

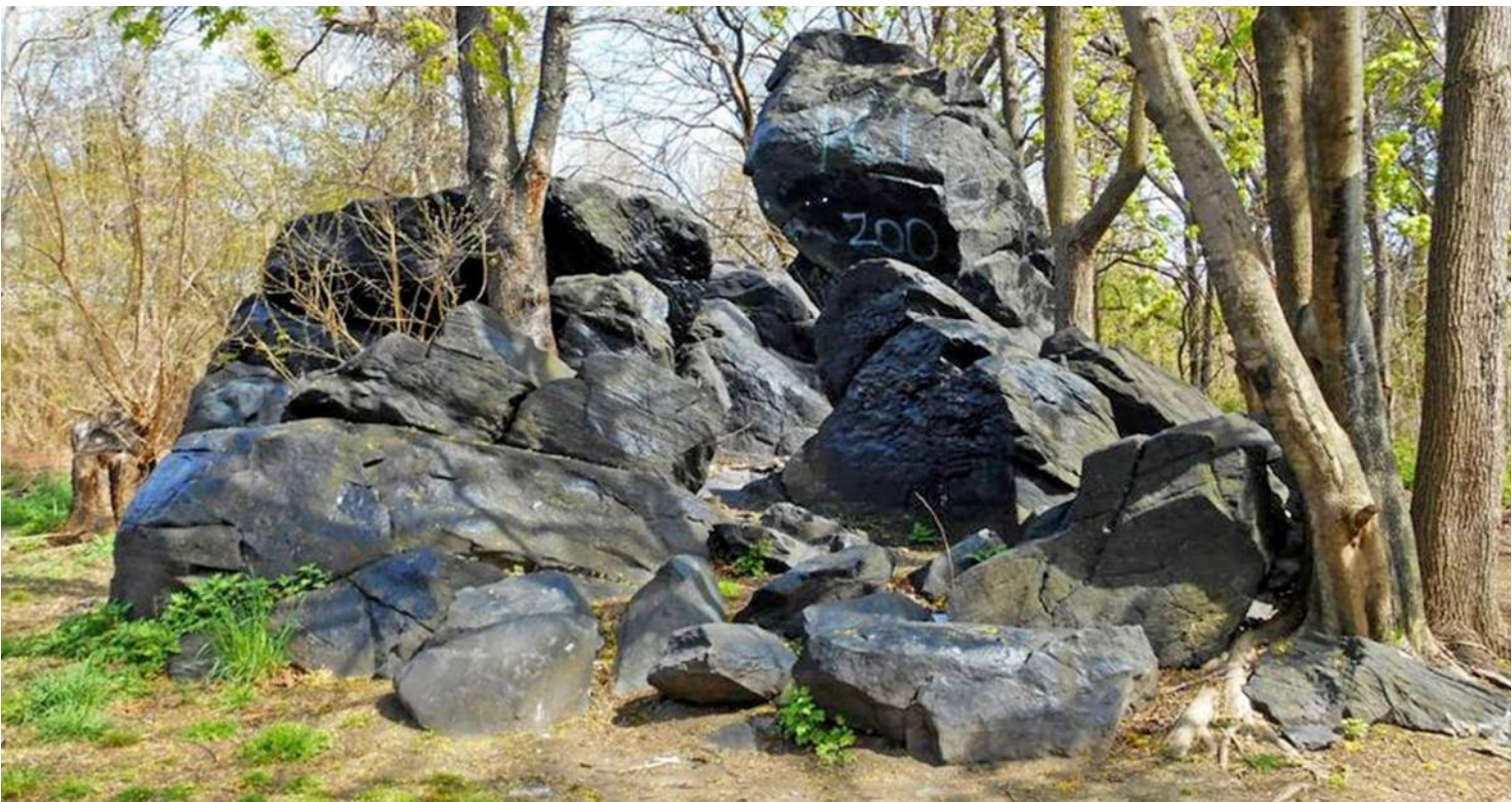
(Source: NYC Parks and Recreation)



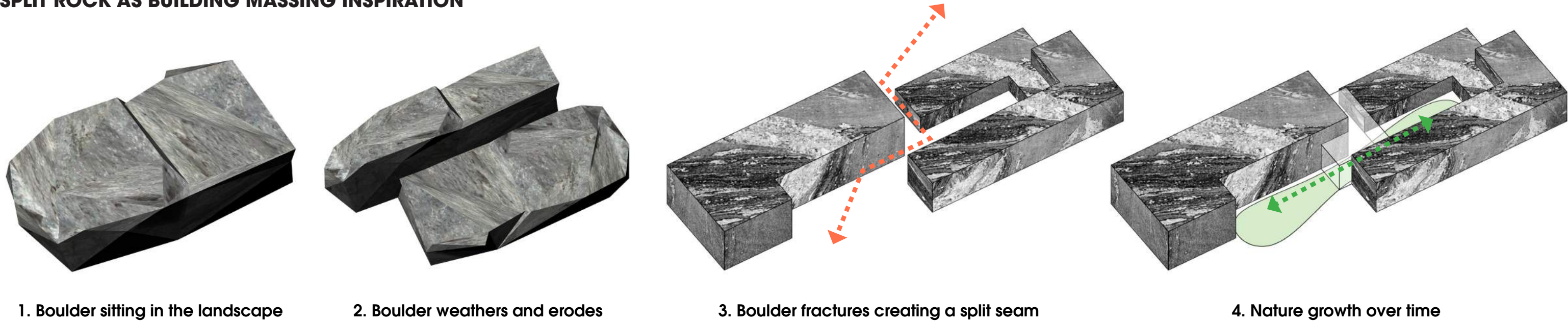
"Humans need animals for companionship, therapy and play: they are the pollinators of good will."

Congruently, animals are dependent on humans for healthy food, clean water & safety from hazards.

This interdependence leads to a balancing act, supports a construct of an outer perimeter, a protective shell hosting an inner world of softness."



SPLIT ROCK AS BUILDING MASSING INSPIRATION





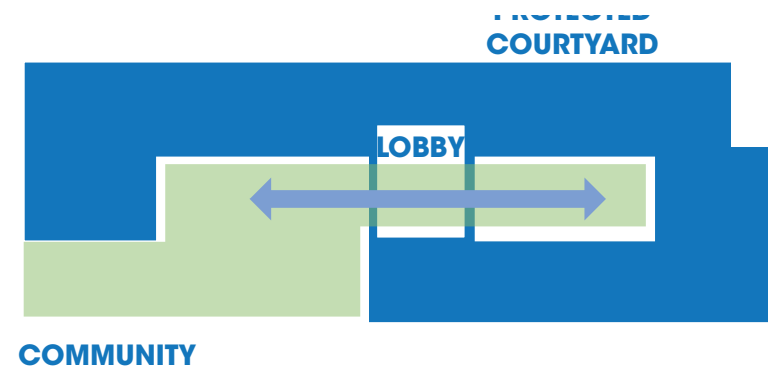
**BUILDING BLOCK WITH REQUIRED
VEHICULAR ACCESS THROUGH THE SITE**



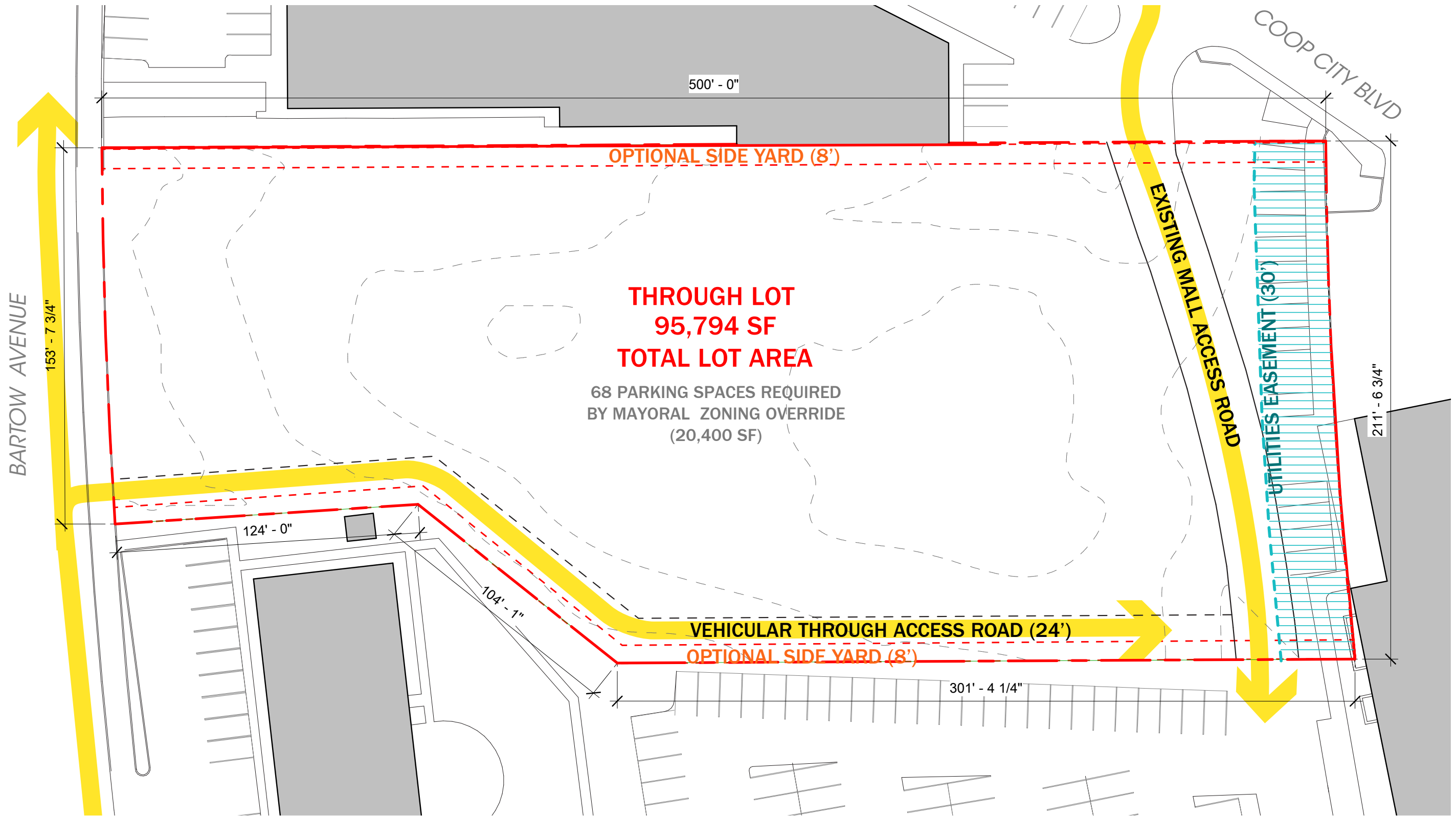
ESTABLISH DUAL STREET FRONTAGE



**ALLOW NATURAL LIGHT INTO THE BUILDING AND
PROVIDE OPEN SPACES FOR THE
COMMUNITY AND BUILDING USERS**



**CENTRALIZED LOBBY ACTS AS A CONNECTOR
BETWEEN THE ENTRY PLAZA AND PROTECTED
COURTYARD**



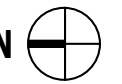
LEGEND

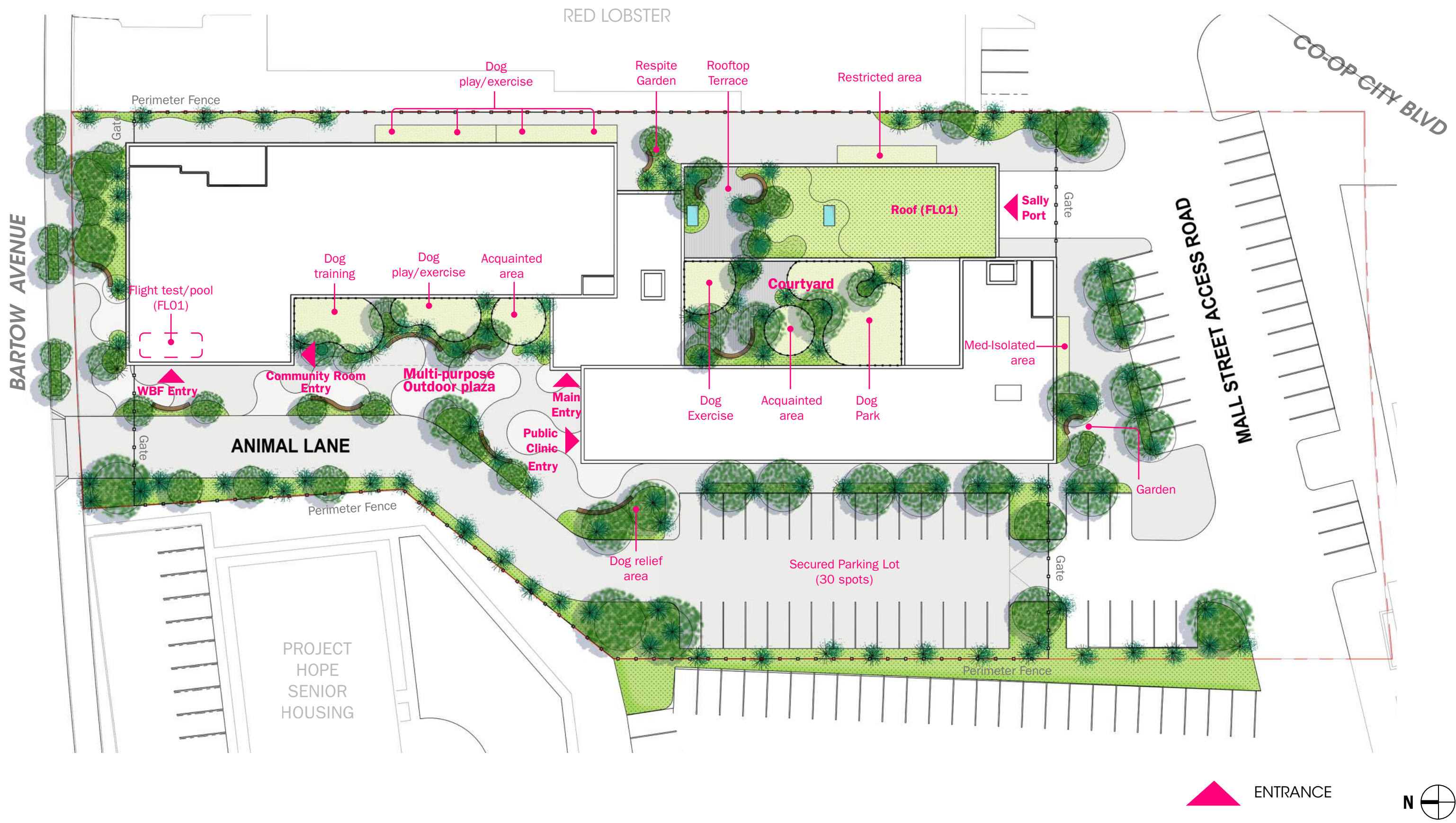


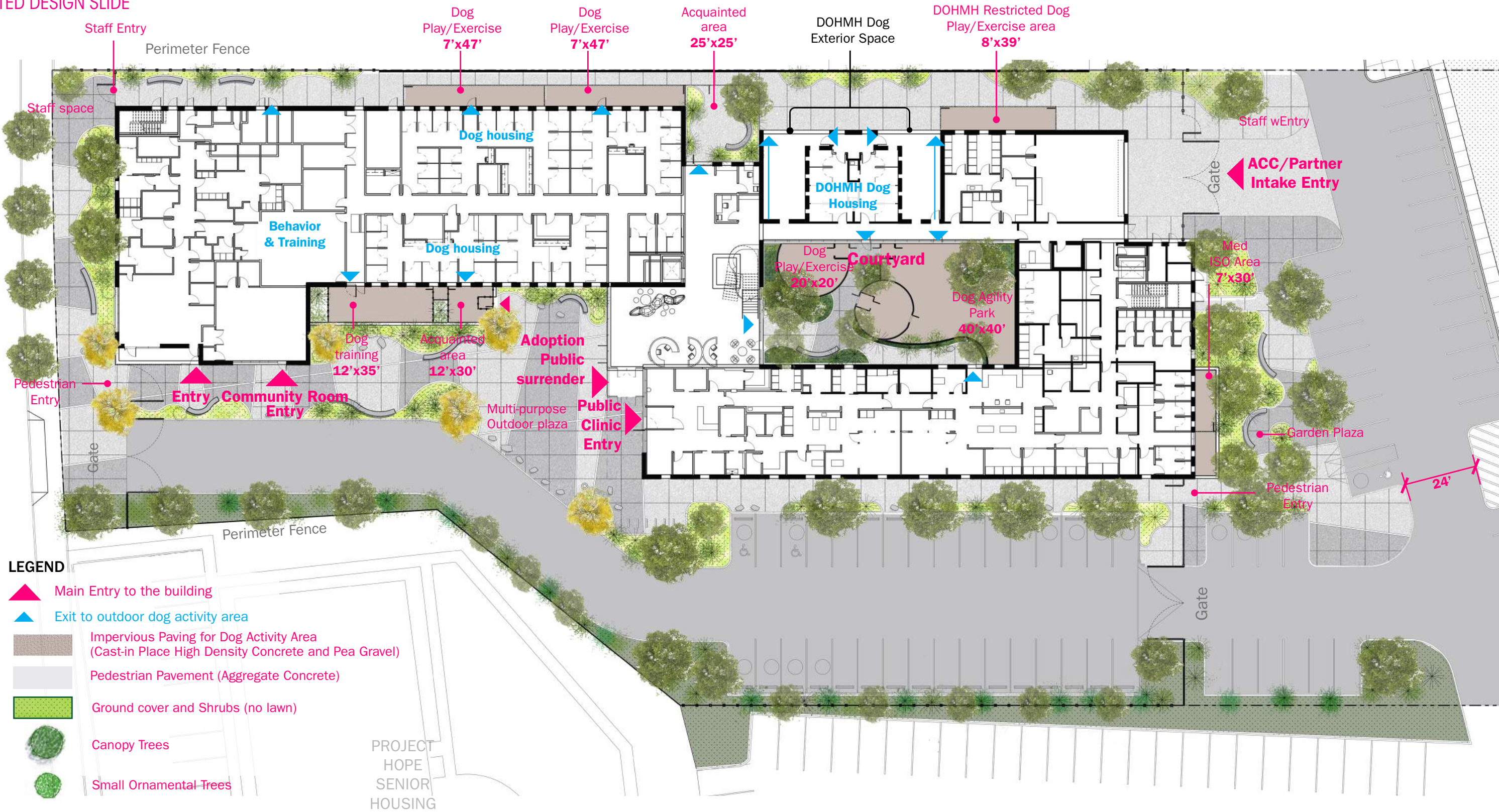
PROJECT SITE

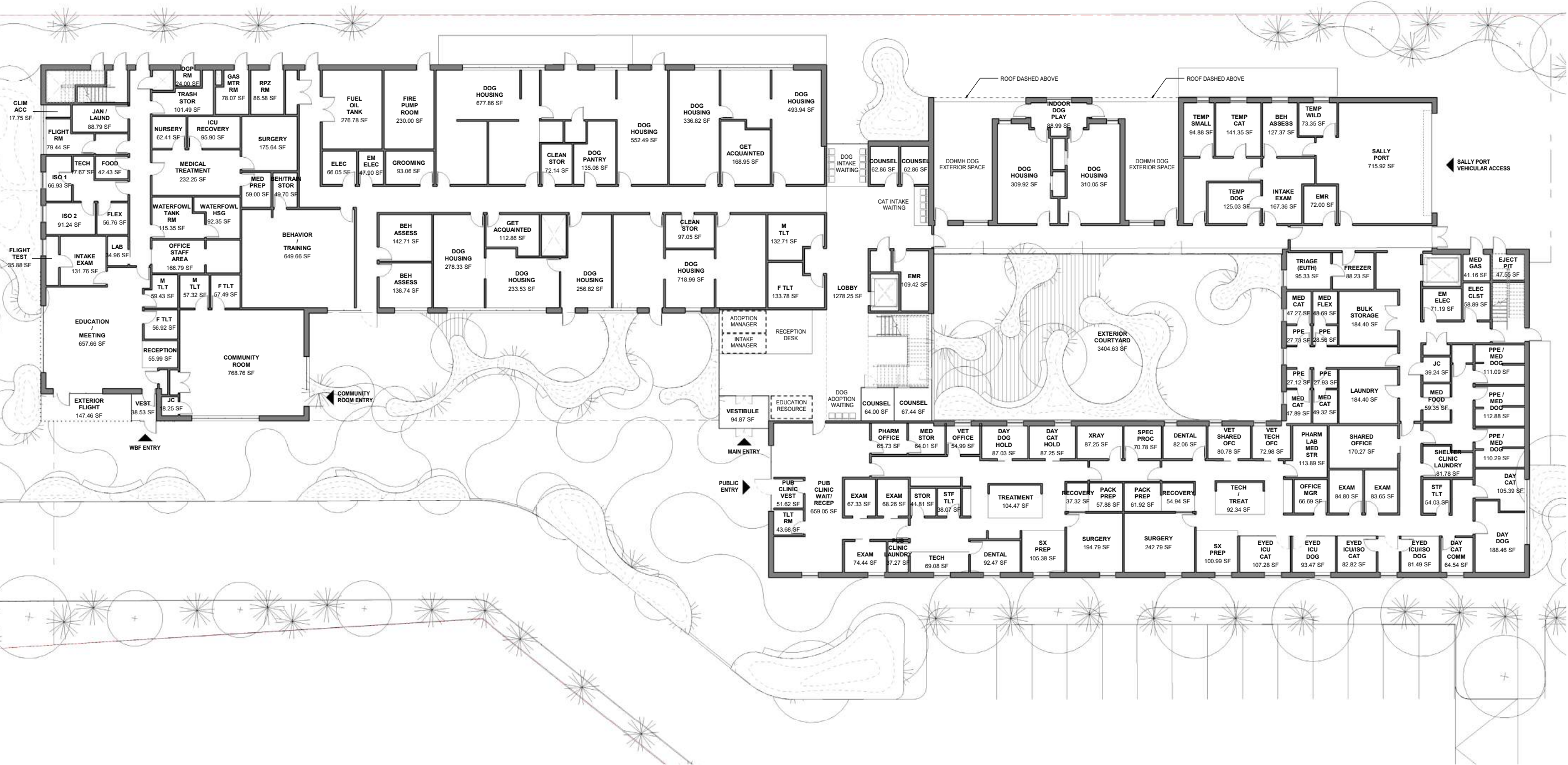


UTILITIES EASEMENT

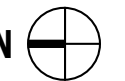
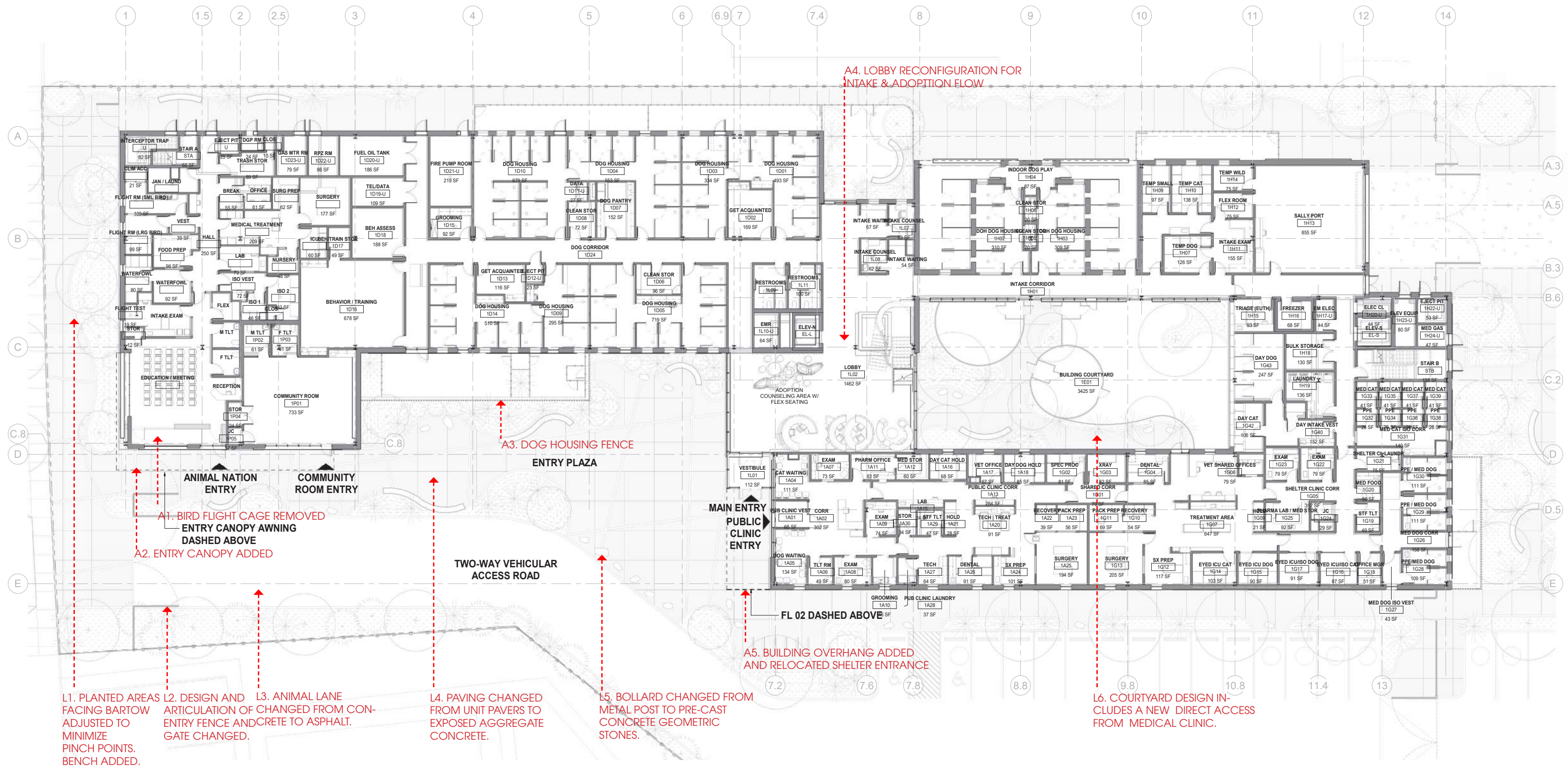


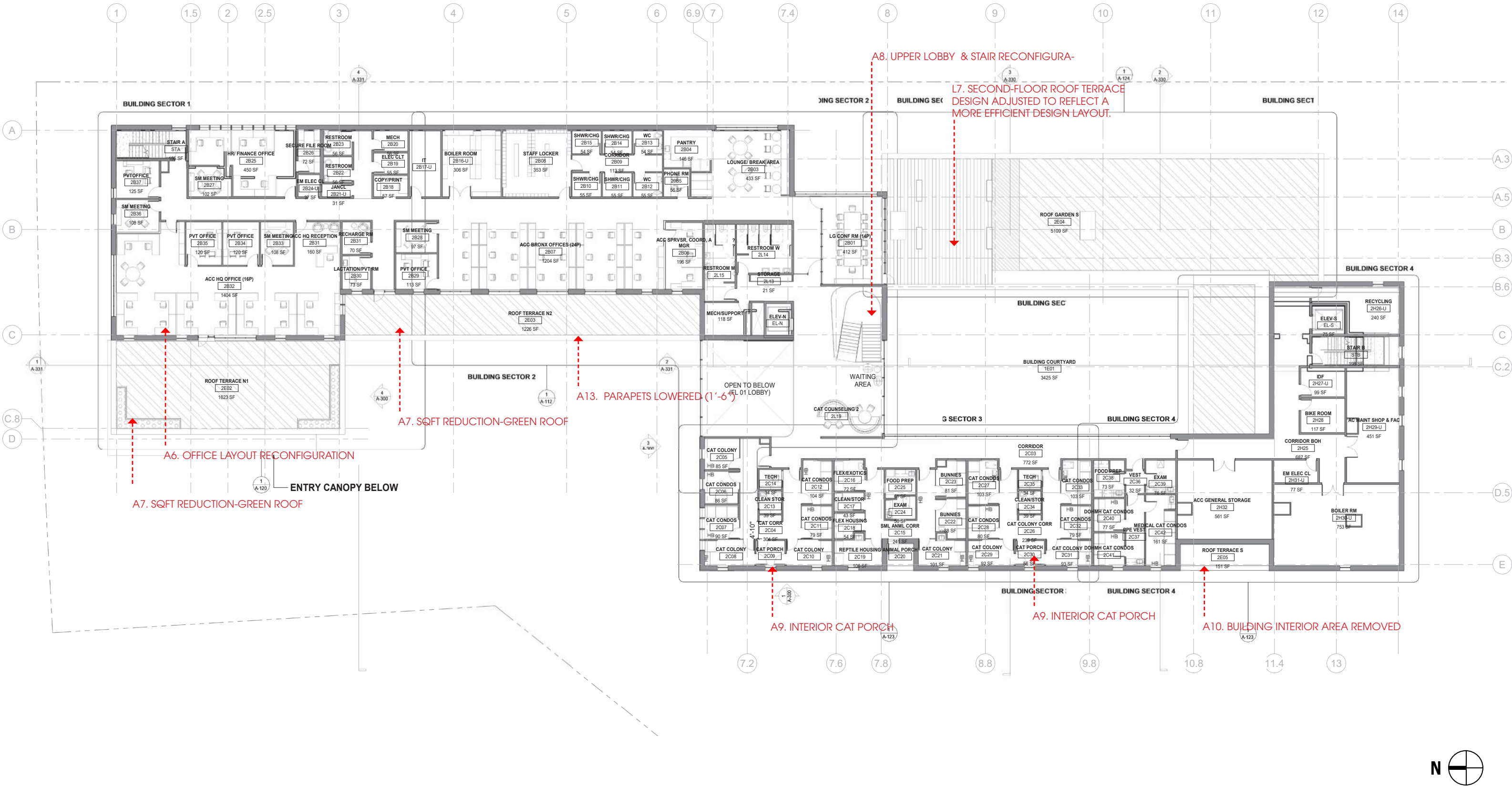


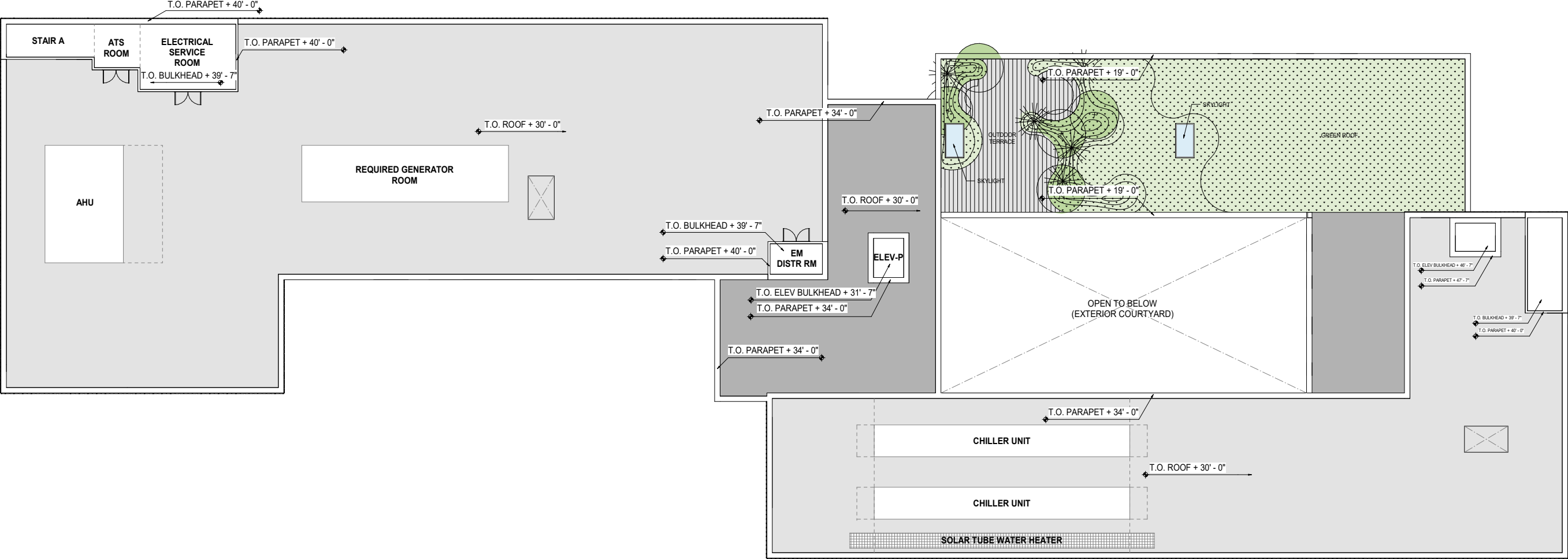


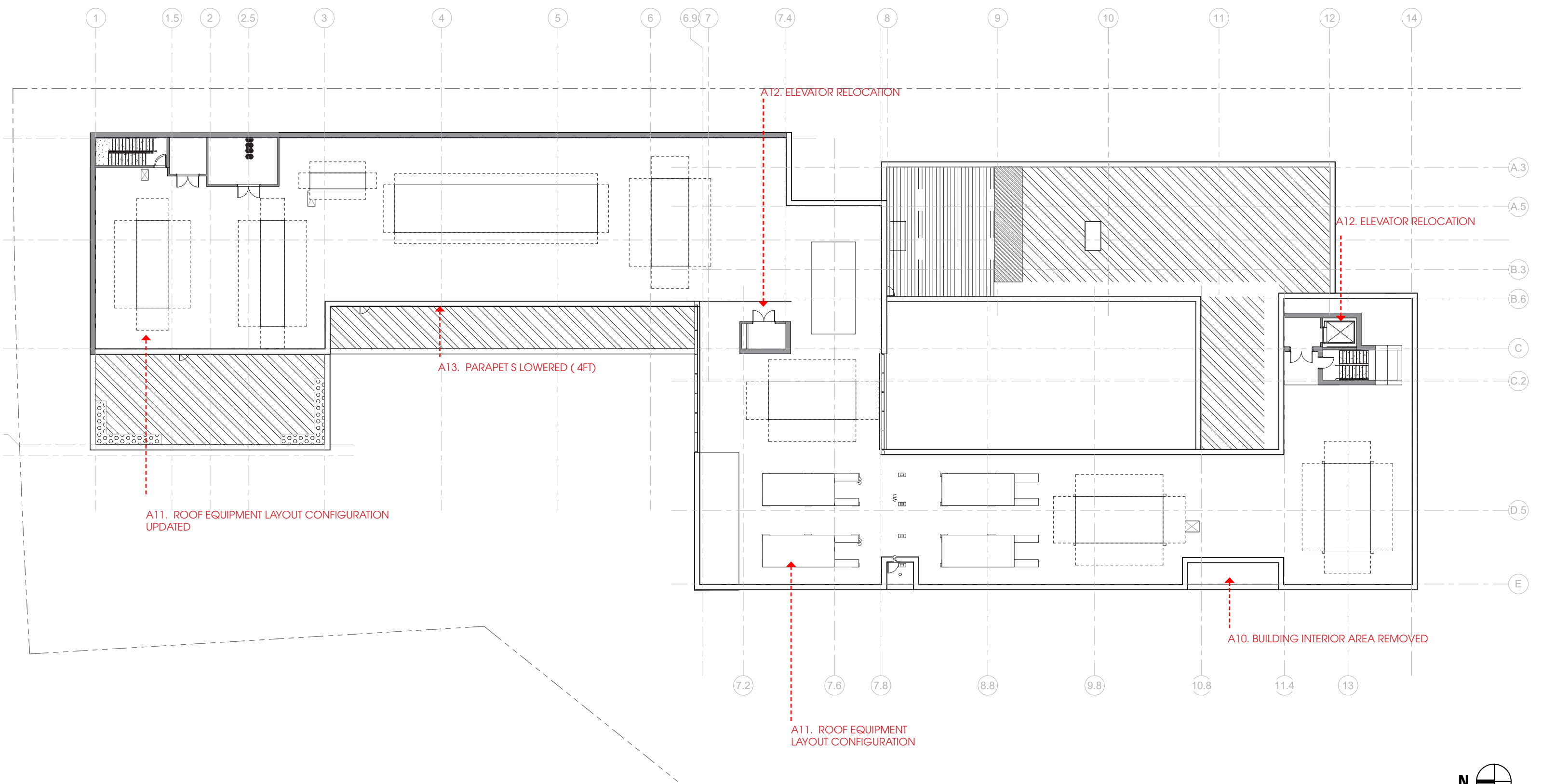


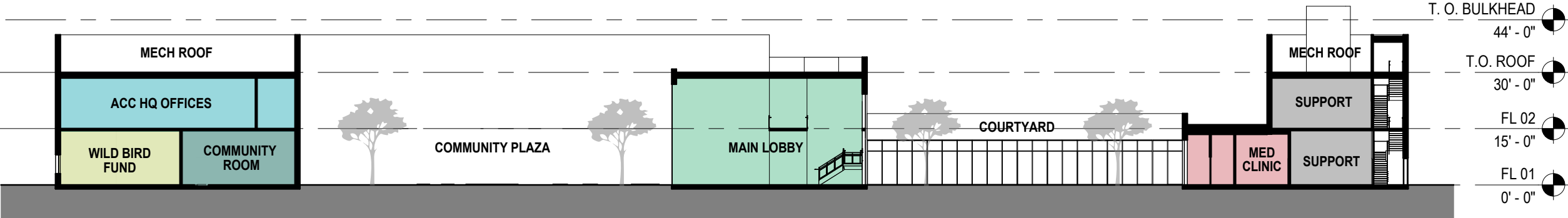
UPDATED DESIGN SLIDE



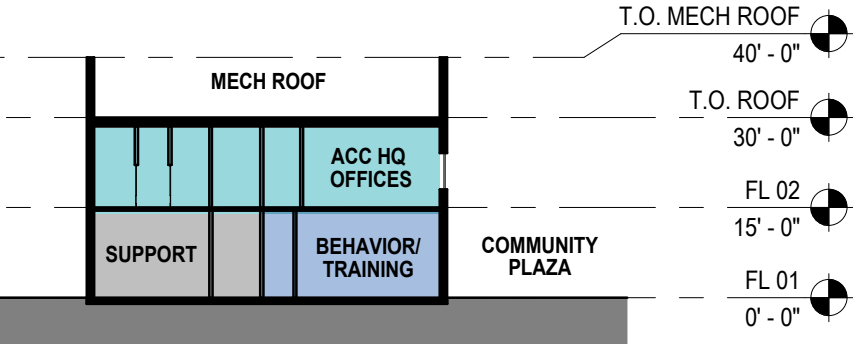




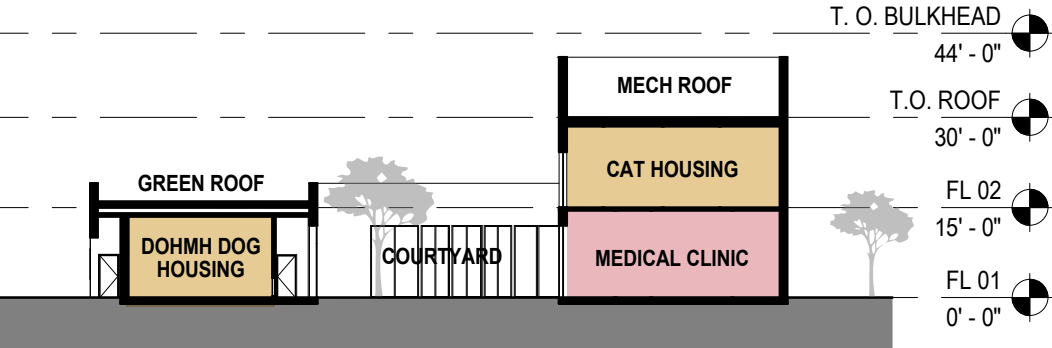




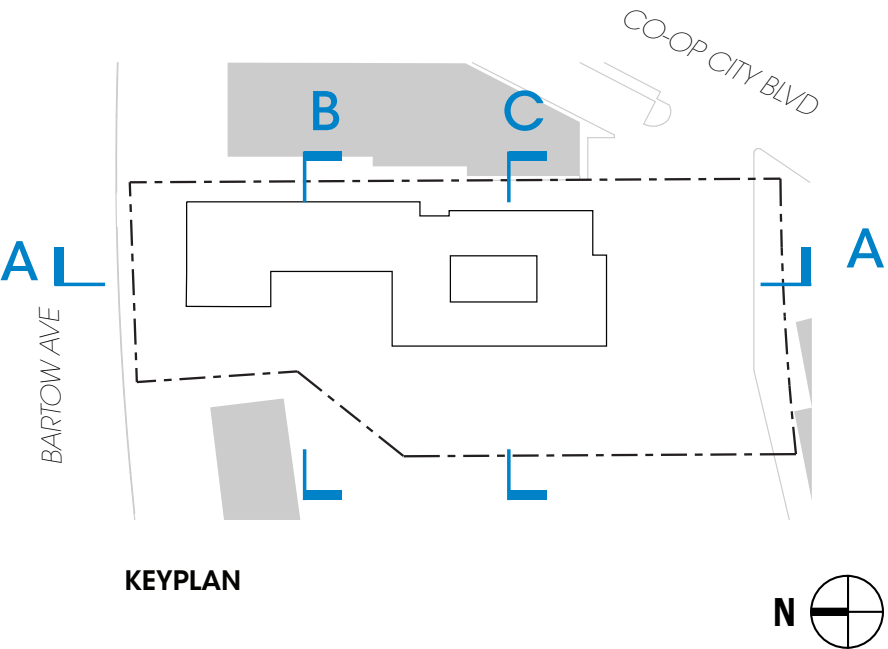
A LONGITUDINAL SECTION



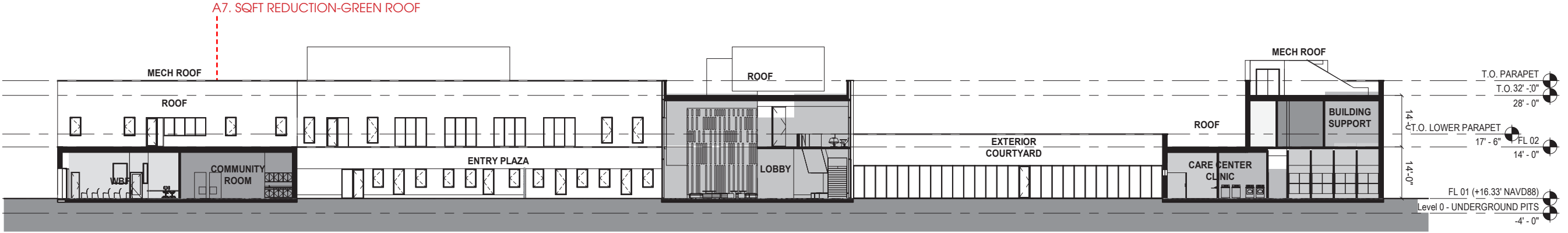
B CROSS SECTION



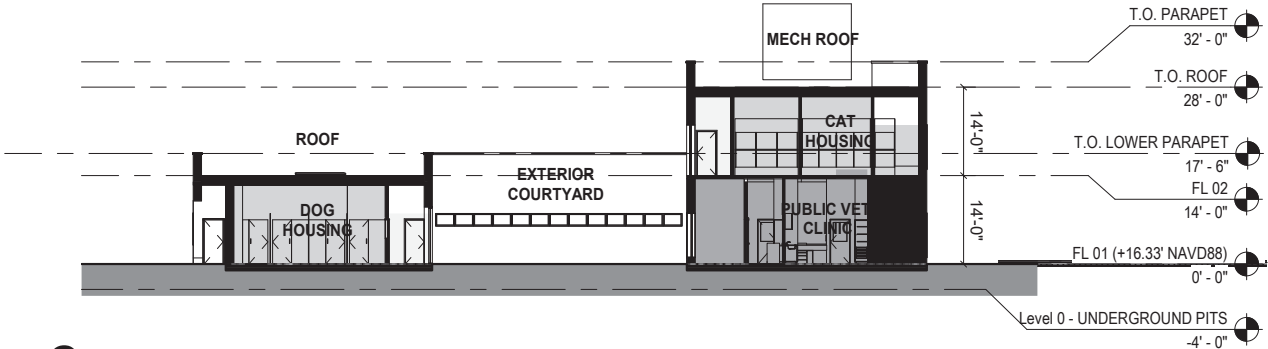
C CROSS SECTION



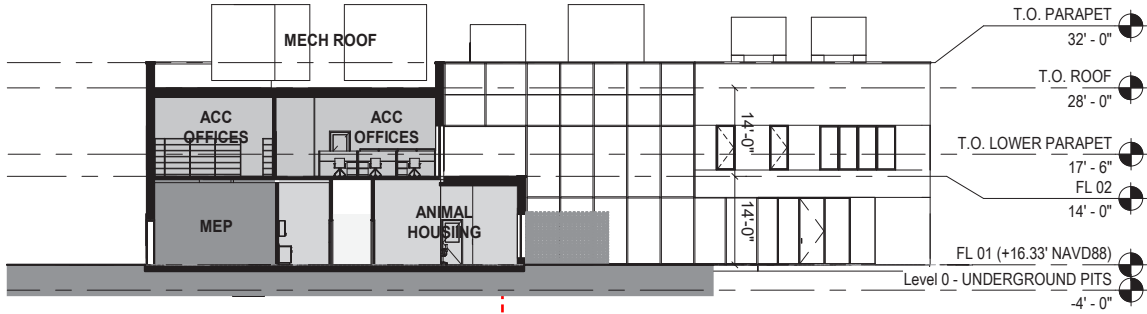
KEYPLAN



3 NORTH-SOUTH SECTION THROUGH ENTRY COURT AND COURTYARD
1" = 20'-0"

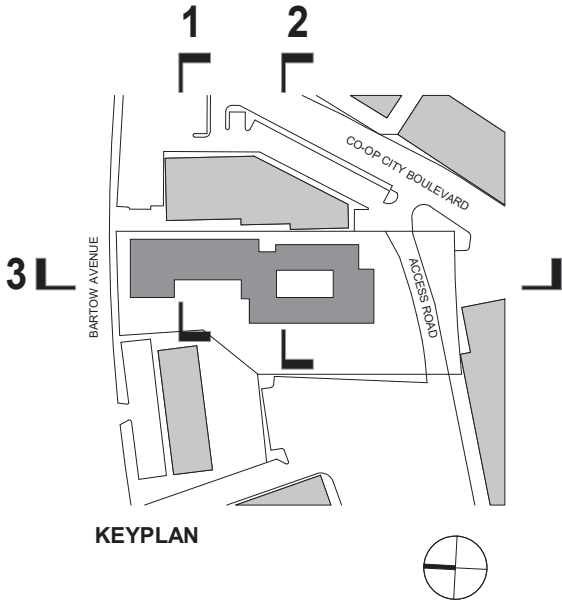


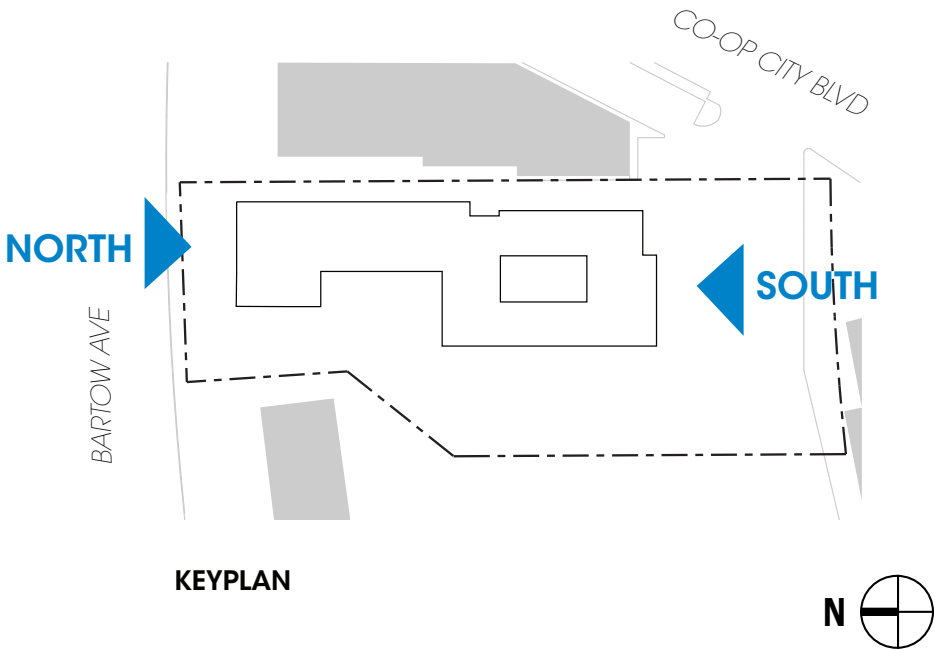
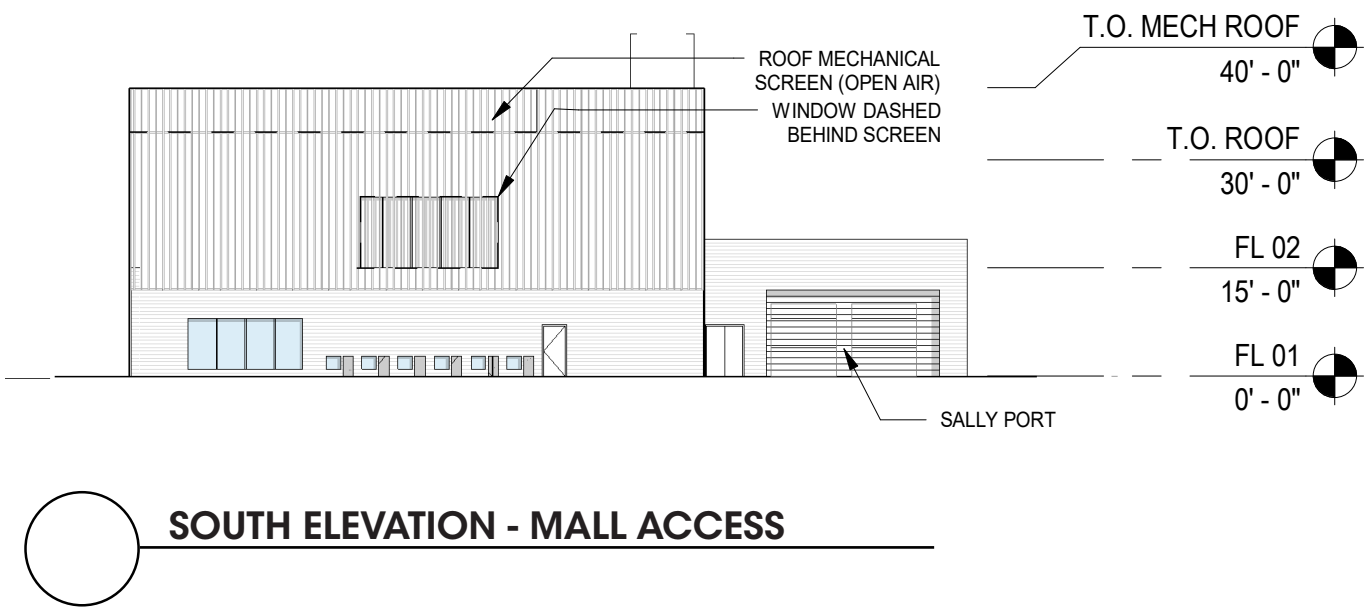
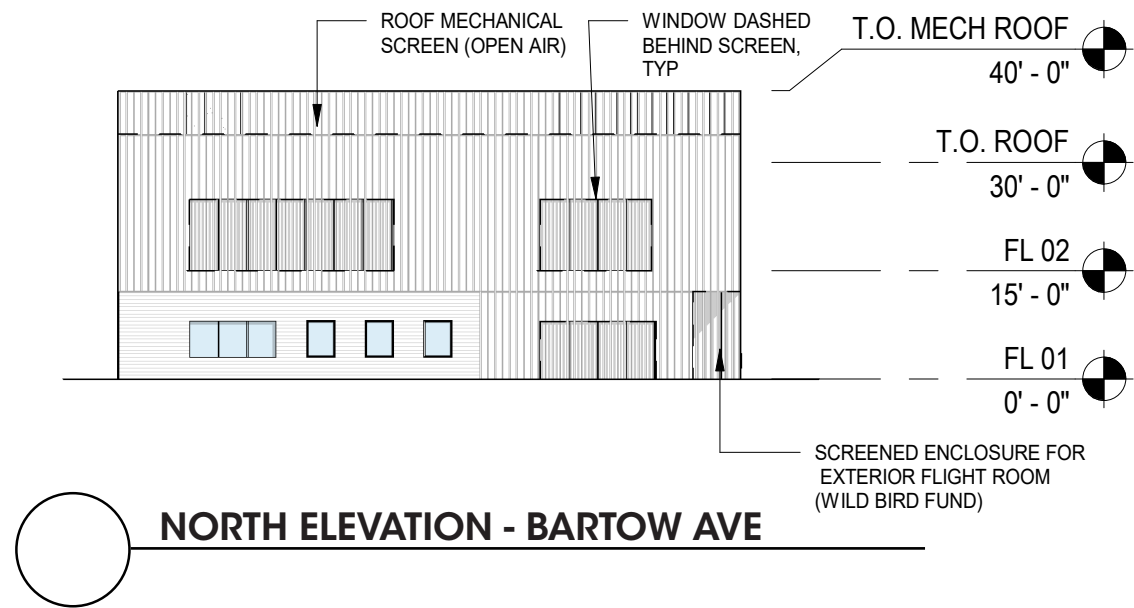
2 EAST-WEST THROUGH COURTYARD SECTION LOOKING SOUTH
1" = 20'-0"

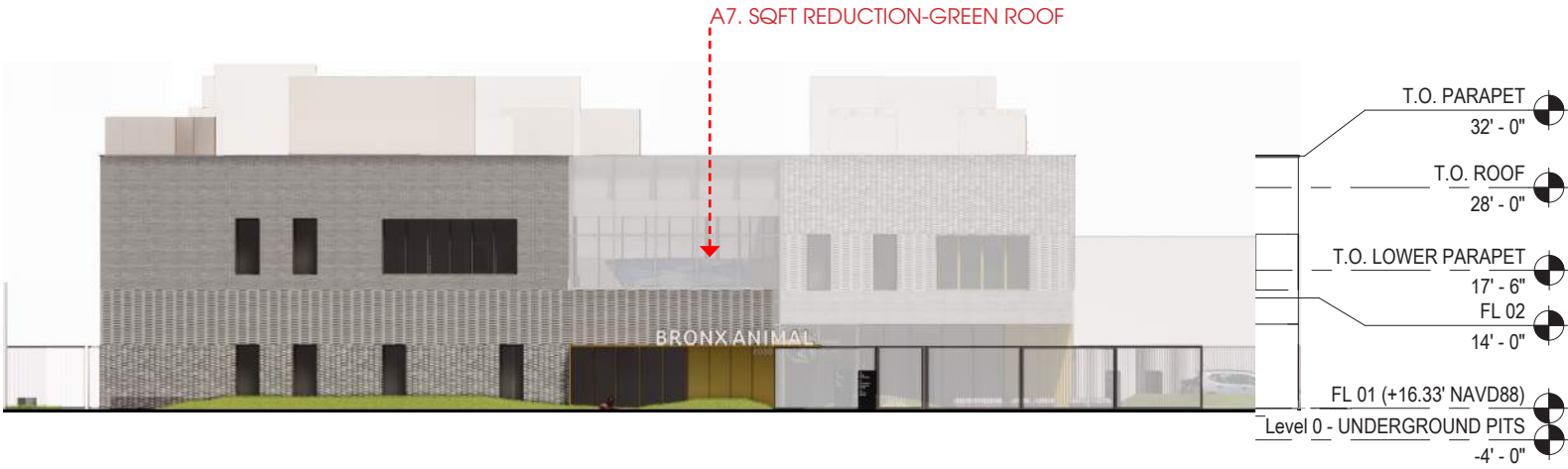


1 EAST-WEST SECTION LOOKING SOUTH
1" = 20'-0"

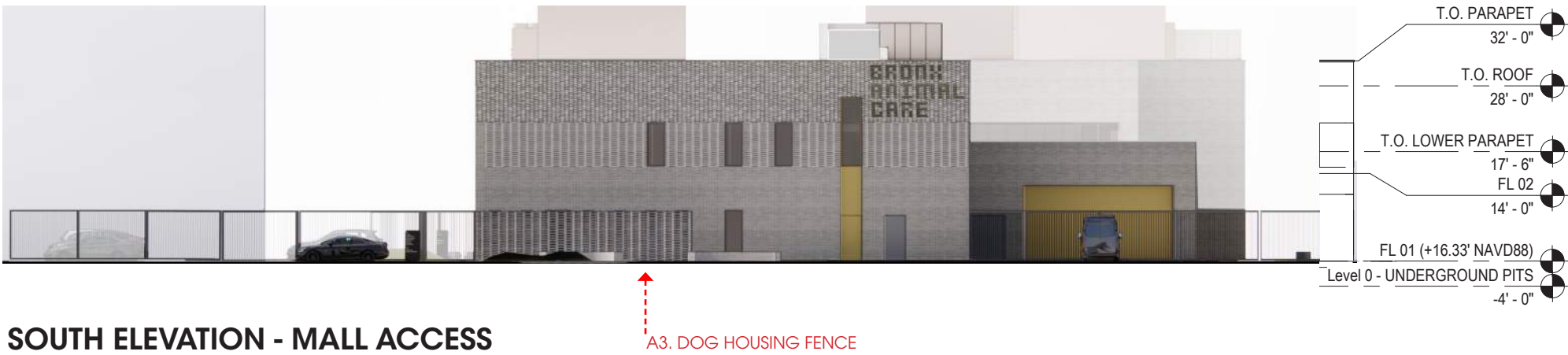
A7. SQFT REDUCTION-GREEN ROOF



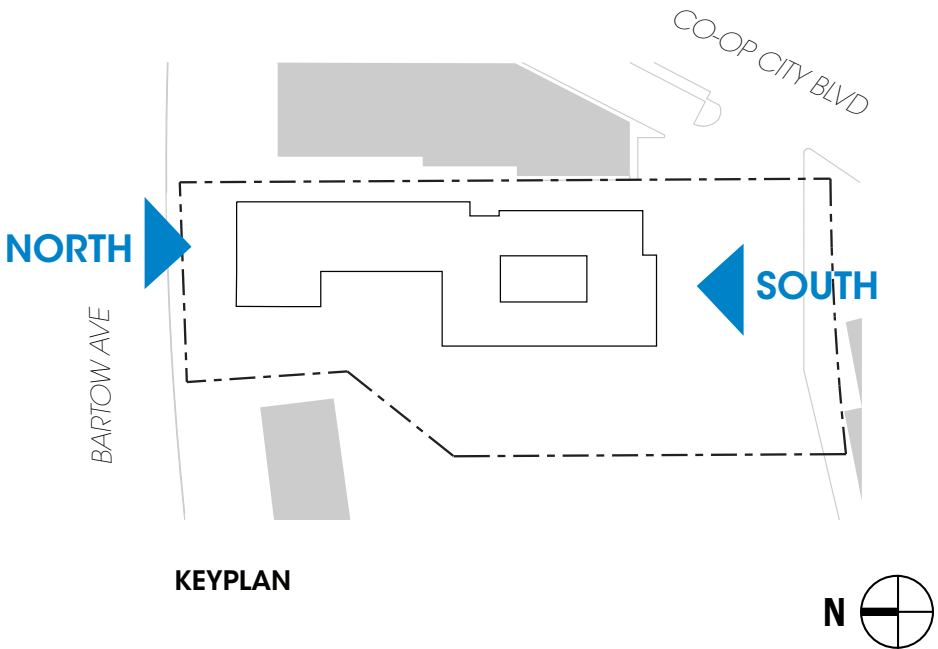


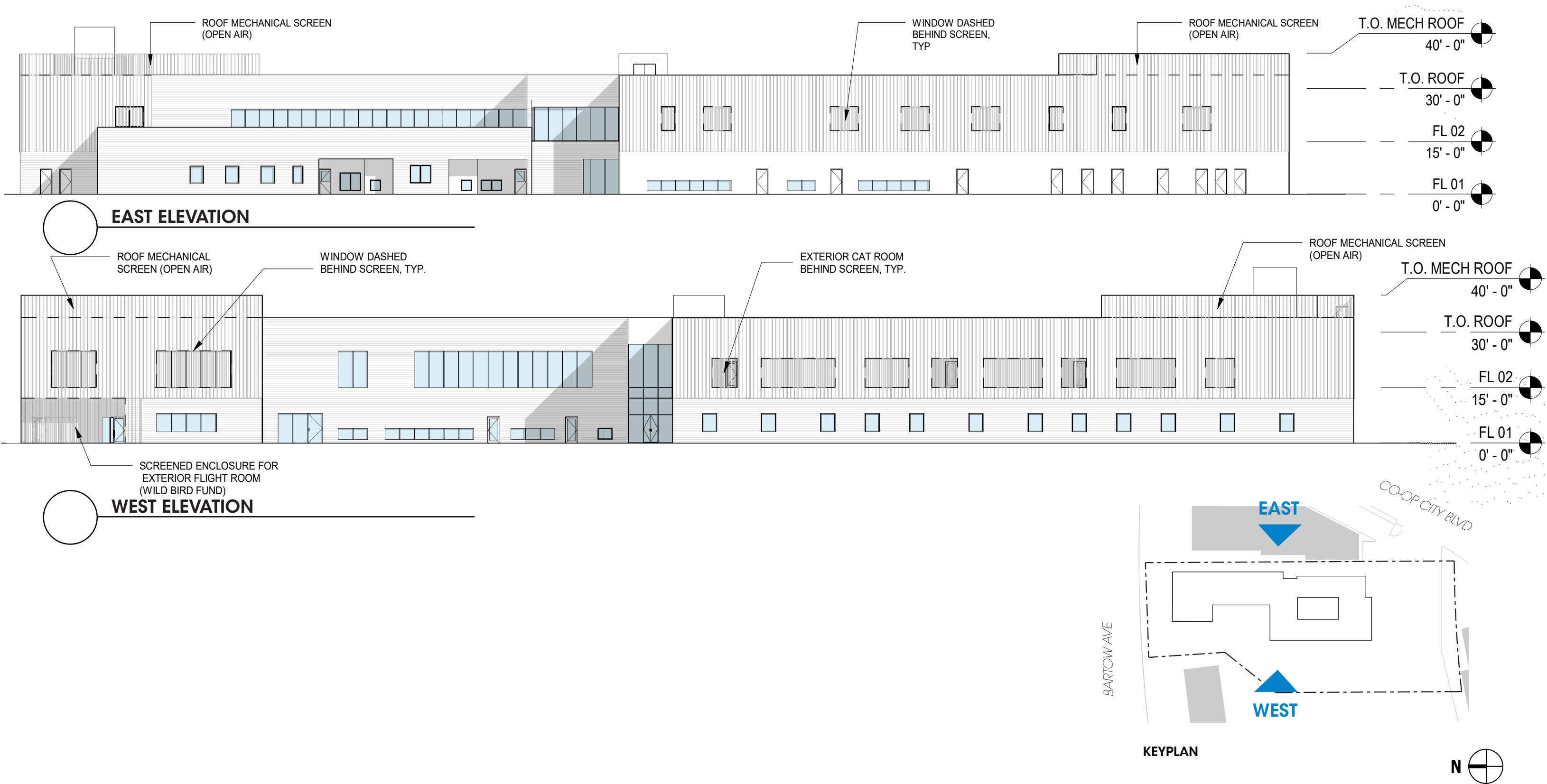


NORTH ELEVATION - BARTOW AVE



SOUTH ELEVATION - MALL ACCESS







- T.O. PARAPET 32' - 0"
- T.O. ROOF 28' - 0"
- T.O. LOWER PARAPET 17' - 6"
- FL 02 14' - 0"
- FL 01 (+16.33' NAVD88)
- Level 0 - UNDERGROUND PITS -4' - 0"

EAST ELEVATION



- T.O. PARAPET 32' - 0"
- T.O. ROOF 28' - 0"
- T.O. LOWER PARAPET 17' - 6"
- FL 02 14' - 0"
- FL 01 (+16.33' NAVD88)
- Level 0 - UNDERGROUND PITS -4' - 0"

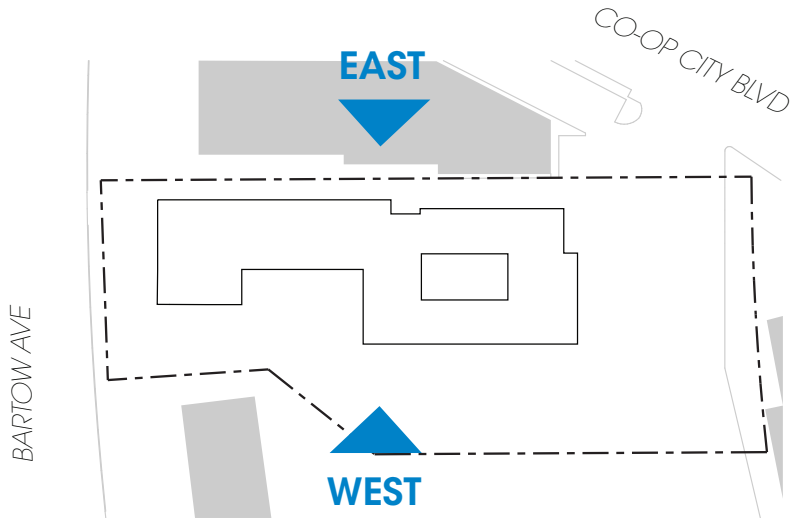
A1. BIRD FLIGHT CAGE REMOVED

A2. ENTRY CANOPY ADDED

A3. DOG HOUSING FENCE

A5. BUILDING OVERHANG ADDED
AND RELOCATED SHELTER ENTRANCE

WEST ELEVATION

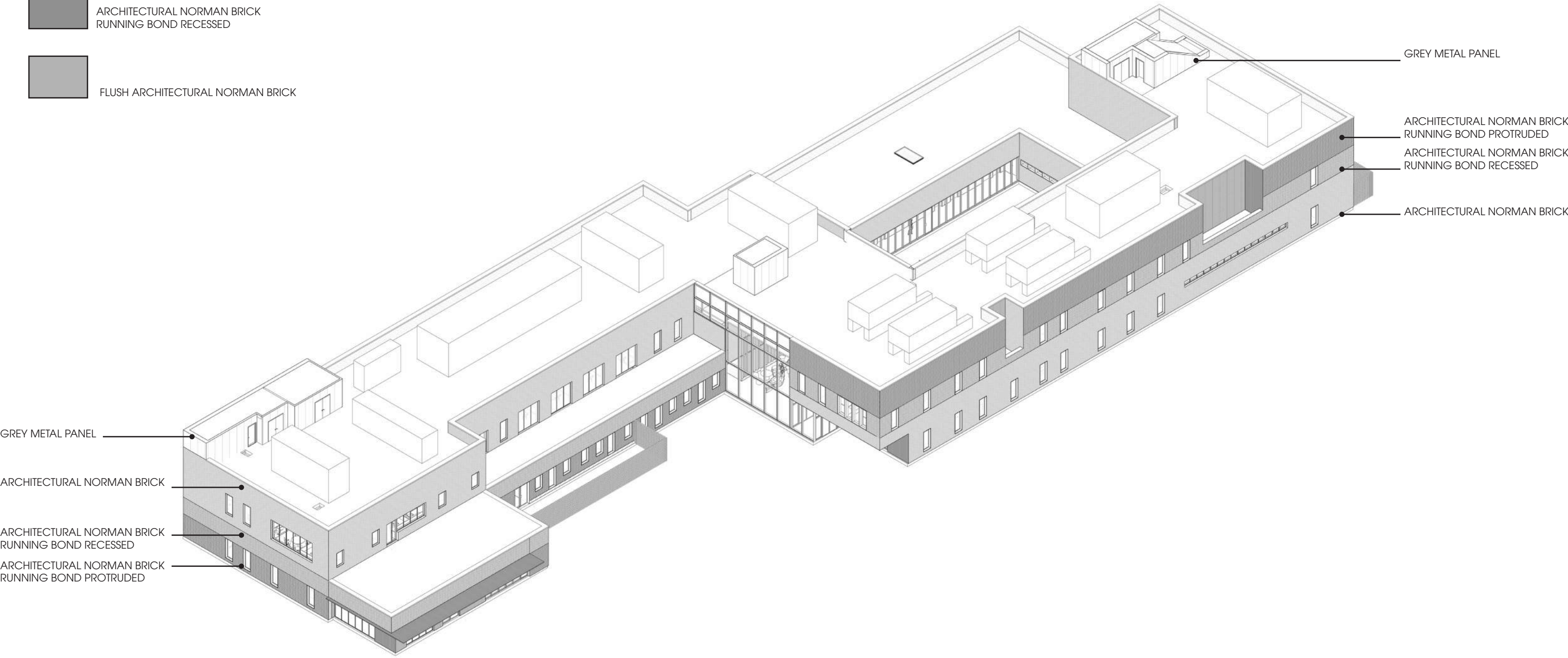


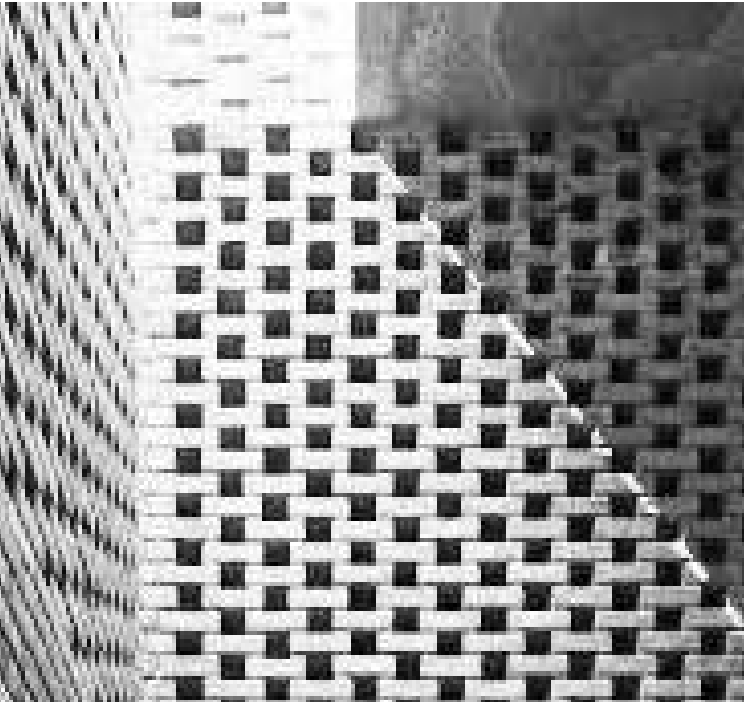
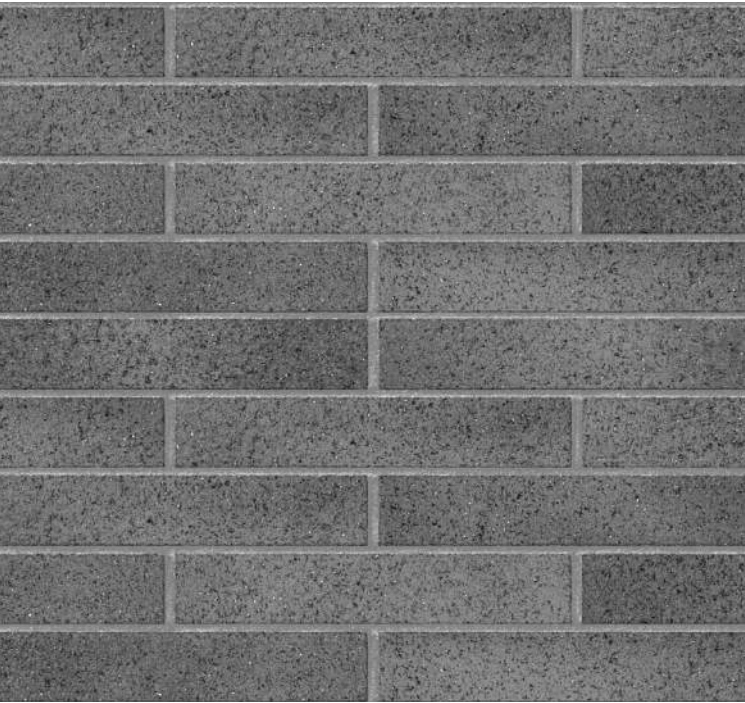
KEYPLAN



NEW DESIGN SLIDE

- ARCHITECTURAL NORMAN BRICK
RUNNING BOND PROTRUDED
- ARCHITECTURAL NORMAN BRICK
RUNNING BOND RECESSED
- FLUSH ARCHITECTURAL NORMAN BRICK





NEW DESIGN SLIDE

BRICK AND METAL PANEL FACADE PATTERNS



BRICK FACADE RUNNING BOND PATTERN WITH METAL PANEL SOFFIT



COLOR PALETTE REFERENCE



NEW DESIGN SLIDE

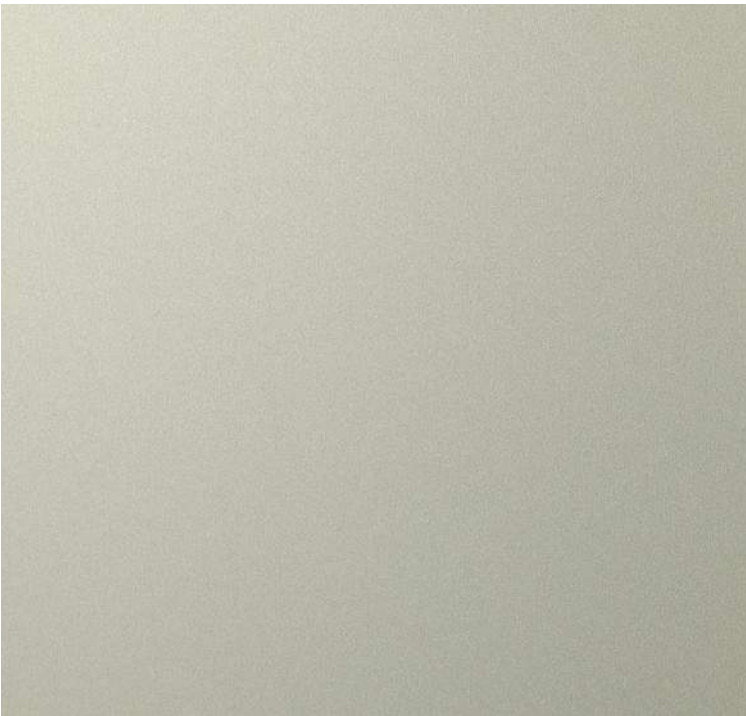
NORMAN BRICK FACADE
NORMAN BRICK - 319 GREY TAYLOR BRICK



METAL PANELS - ACCENT PANELS
PAINTED ALUMINUM RAL 1004/1021




METAL PANEL - MULLIONS/MECHANICAL
PAINTED ALUMINUM RAL CHAMPAGNE



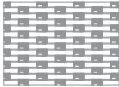
STOREFRONT & WINDOWS
BIRD SAFE GLASS



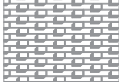
NEW DESIGN SLIDE



12" GRANITE COURSE AT GRADE



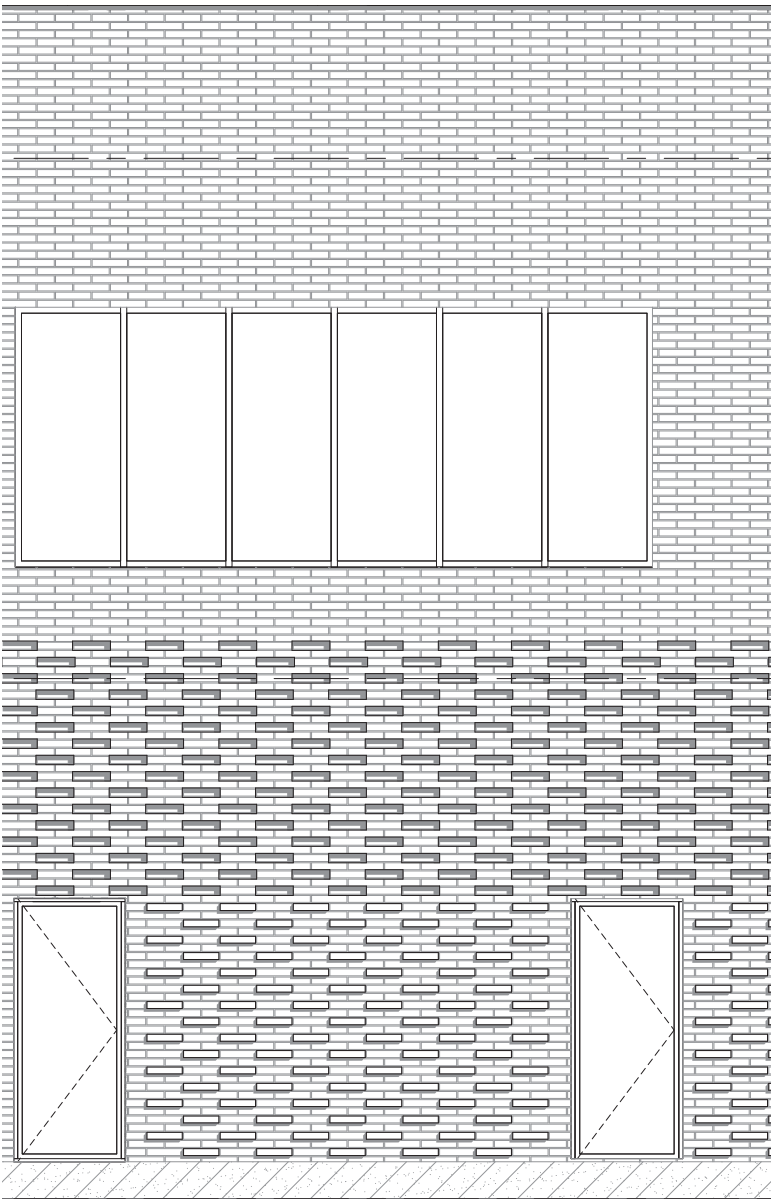
ARCHITECTURAL NORMAN BRICK
3-5/8" x 2-1/4" x 11-5/8"
FLEMISH BOND WITH 2" RECESSED BRICK



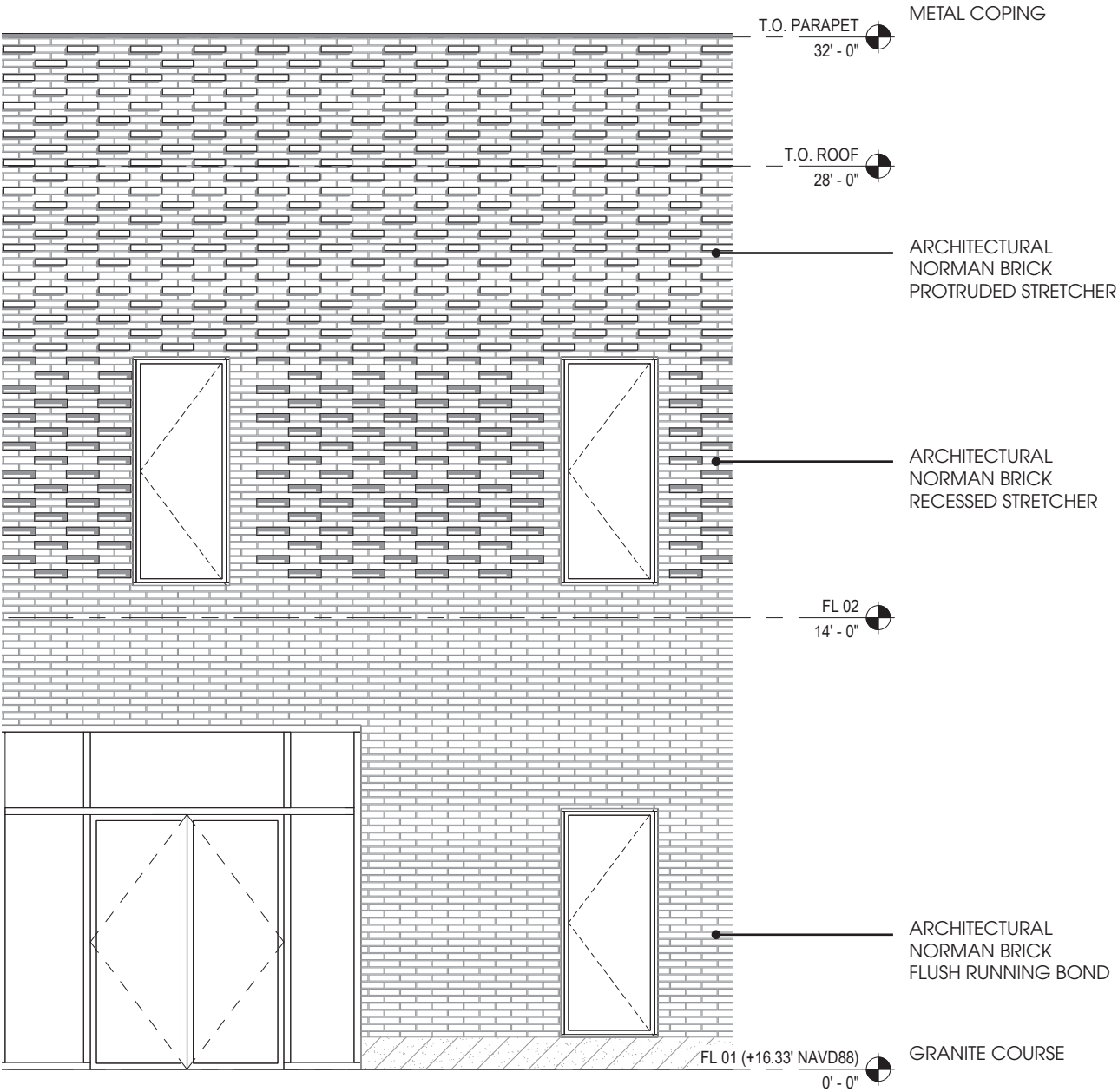
ARCHITECTURAL NORMAN BRICK
3-5/8" x 2-1/4" x 11-5/8"
FLEMISH BOND WITH 2" PROTUDED BRICK



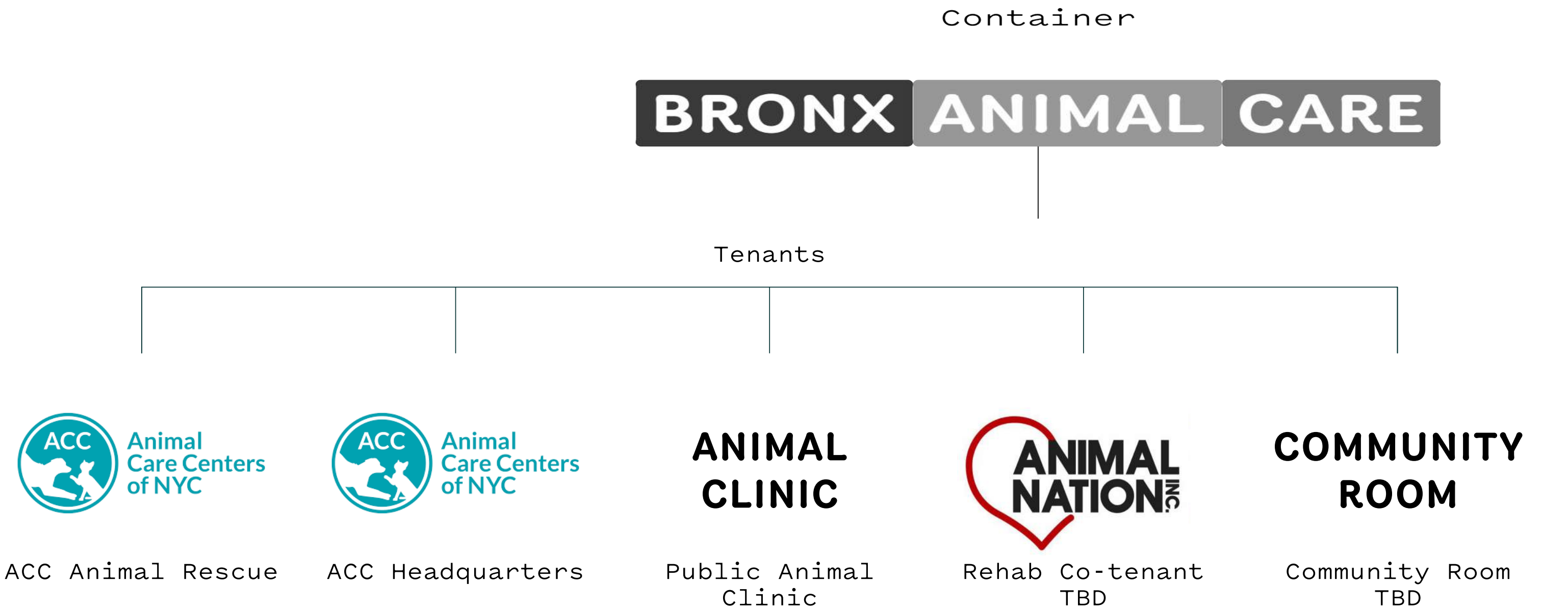
TEXTURE RENDERING



NORTH VOLUME PATTERN



SOUTH VOLUME PATTERN

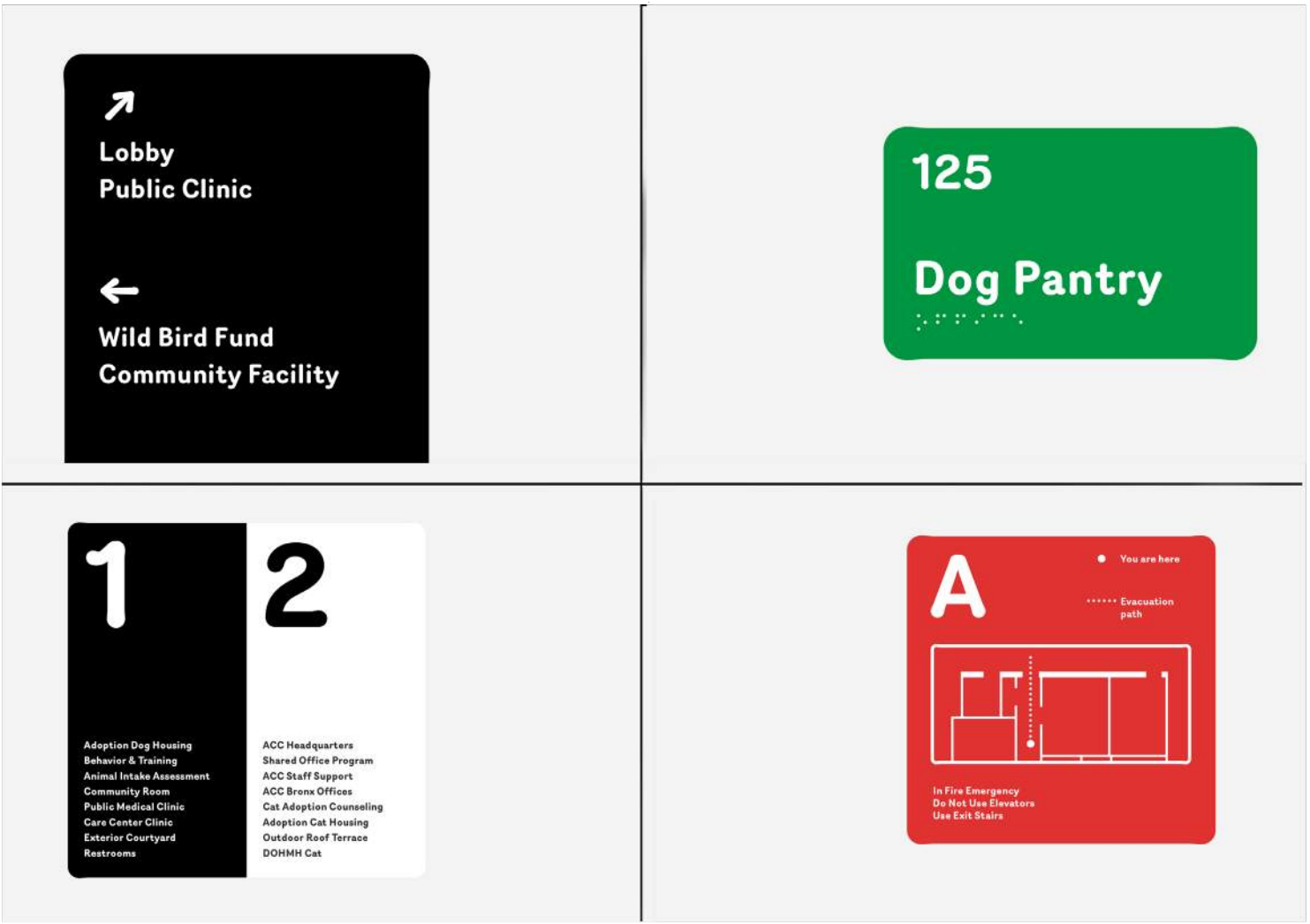


Container

The Bronx Animal Care graphic program is the unifying scheme throughout the building



Primary building identification



Exterior directional signage
Interior wayfinding
Base-building signage
Code related signage



PROTRUDED BRICK PATTERN SIGNAGE



PROTRUDED BRICK PATTERN SIGNAGE

Tenants

Tenants can use their graphic identities in select places



Entry signage



Uniforms
Printed materials
Marketing pieces





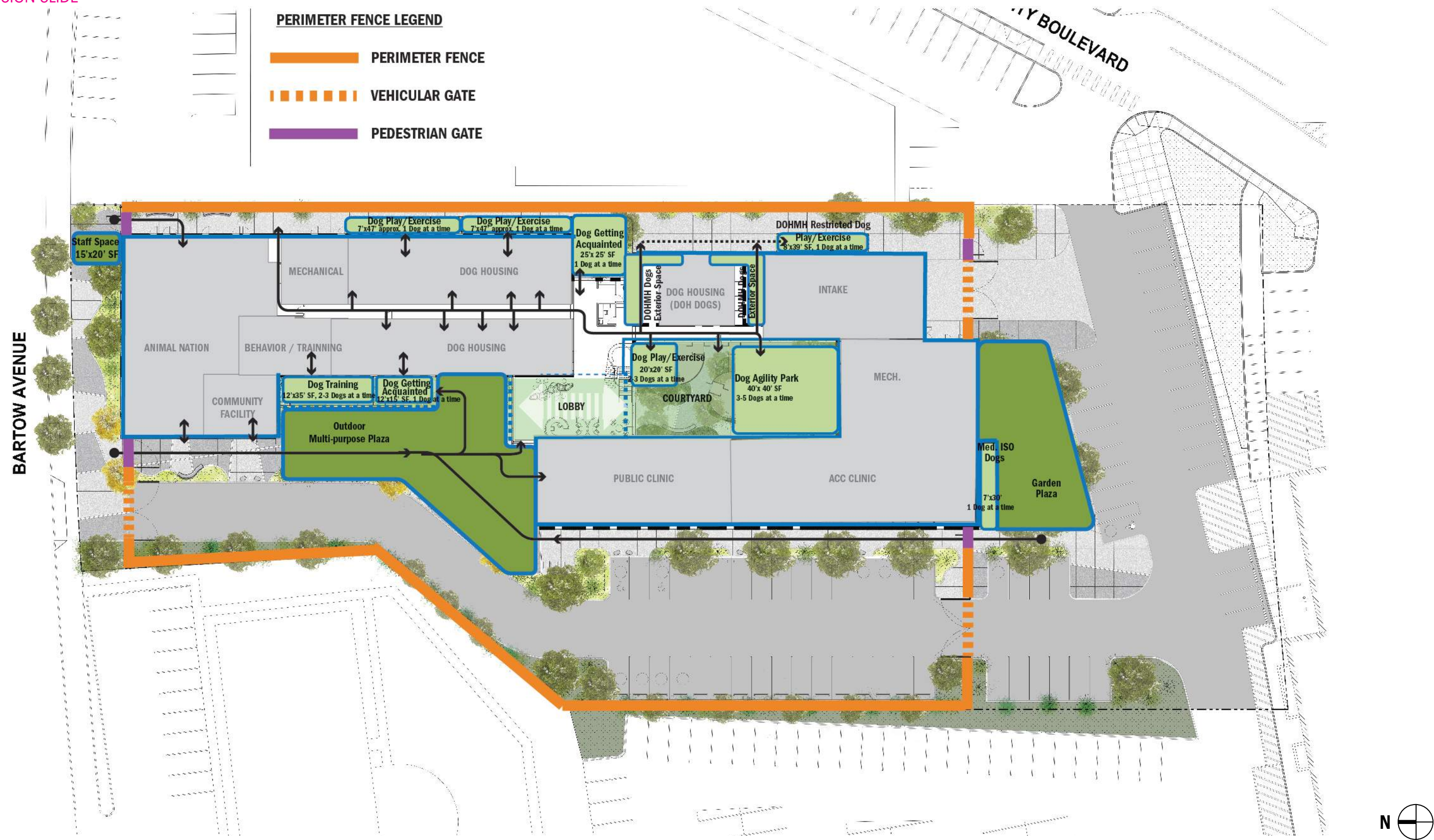












SCREENING



Little Leaf Linden



Leyland Cypress



Juniper Shrub



Juniper Groundcover



Allegheny Spurge



False Cypress

ENTRY PLAZA



Ginkgo Fastigiata (male)



River Birch



Smoke Tree



Hakone grass



Thuja Fire Chief



Yellow Twig Dogwood



Juniper Groundcover

COURTYARD



Boston Fern



Hayscented Fern



River Birch



Northern Maidenhair Fern



Allegheny Spurge

GREEN ROOF



Sedum album 'Coral Carpet'



Sedum lineare



Juniper



LEGEND

- PROPERTY LINE
 - GROUND FACE CMU BLOCK WALL
 - ENTRY GATE
 - WEST PERIMETER FENCE
 - EAST PERIMETER FENCE
 - DOG AREA FENCE - COURTYARD
 - DOG AREA FENCE - EAST
 - OMEGA STEEL FENCE
 - FENCE GATES
 - PARKING BUMPER
 - BIKE RACK
 - BOLLARD
 - LIGHT POLES AND LUMINARE
 - BENCH
 - PET WASTE STATIONS
 - PLANTING AREA
 - EXPOSED AGGREGATE CONCRETE PAVING - TYPE 1
 - EXPOSED AGGREGATE CONCRETE PAVING - TYPE 2
 - EXPOSED AGGREGATE CONCRETE PAVING - TYPE 3
 - IMPERVIOUS CIP CONCRETE SURFACE FOR DOG AREA
 - ASPHALT PAVING FOR VEHICULAR AREAS
 - UNIT PAVING FOR ROOFTOP TERRACE AREA (ON PEDESTALS)
- NOTE: EACH CONTOUR LINE REPRESENTS 0.5'.





LEGEND

PROPERTY LINE

GROUND FACE CMU BLOCK WALL

ENTRY GATE

WEST PERIMETER FENCE

EAST PERIMETER FENCE

DOG AREA FENCE · COURTYARD

DOG AREA FENCE · EAST

OMEGA STEEL FENCE

FENCE GATES

PARKING BUMPER

BIKE RACK

BOLLARD

LIGHT POLES AND LUMINARE

BENCH

PET WASTE STATIONS

PLANTING AREA

EXPOSED AGGREGATE CONCRETE PAVING · TYPE 1

EXPOSED AGGREGATE CONCRETE PAVING · TYPE 2

EXPOSED AGGREGATE CONCRETE PAVING · TYPE 3

IMPERVIOUS CIP CONCRETE SURFACE FOR DOG AREA

ASPHALT PAVING FOR VEHICULAR AREAS

UNIT PAVING FOR ROOFTOP TERRACE AREA (ON PEDESTALS)

NOTE: EACH CONTOUR LINE REPRESENTS 0.5'.

NYC

Department of
Design and
Construction

NYC

Health

MARVEL

BRONX ANIMAL CARE & VET CLINIC

06.21.2021

SITE PLAN

NOT TO SCALE

DETAILED LANDSCAPE PLAN

SOUTH BUILDING AREA

OPEN GATE



CLOSED GATE



OPEN GATE



CLOSED GATE



NEW DESIGN SLIDE



EXPOSED AGGREGATE CIP CONCRETE
PAVEMENT - LIGHT AND DARK NEUTRAL COLORS



PRECAST CONCRETE BENCHES AND
BOLLARDS - SMOOTH FINISH



LOOP BIKE RACK



PET WASTE STATION



STEEL SLATS FENCE & GATES
POWDER COATED, MEDIUM GRAY



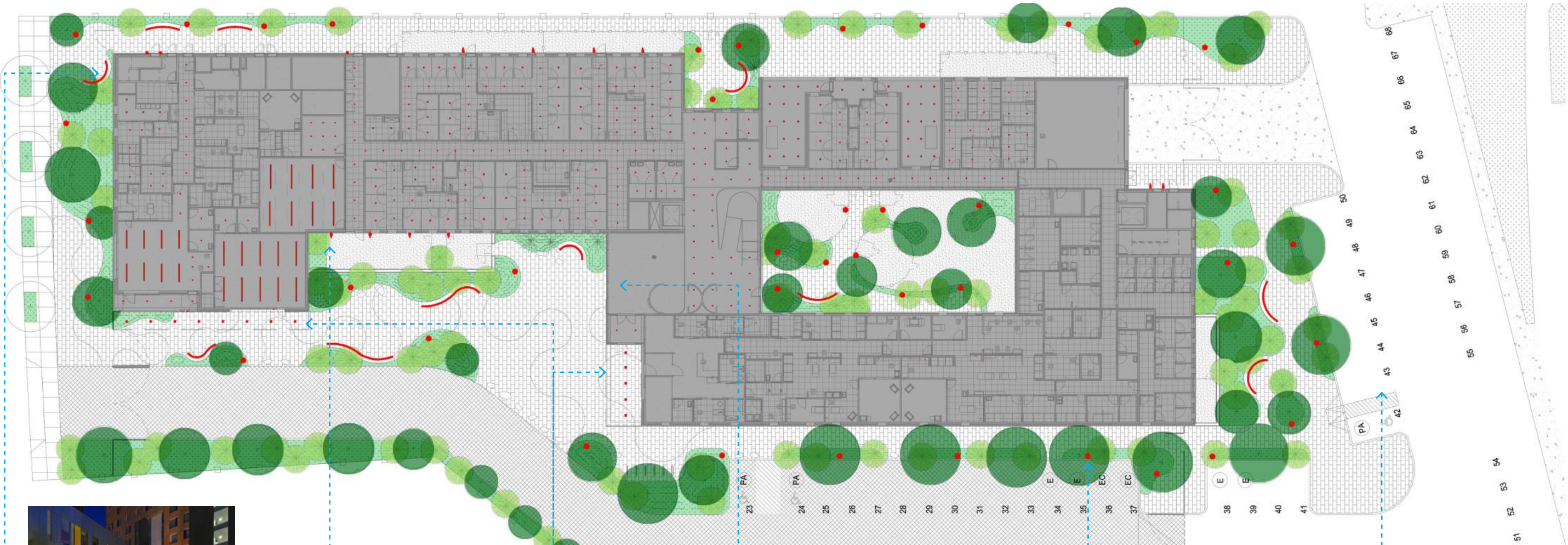
GREENSCREEN FENCING - COURTYARD AND
EAST SIDE ANIMAL AREAS
48" HIGH, CURVED & STRAIGHT



OMEGA FENCE - WEST PERIMETER
72" HIGH, STRAIGHT



GROUND FACE CMU BLOCK WALL -
EAST PERIMETER
CHARCOAL GRAY



1 UNDERBENCH LIGHT:
Subtle, concealed glow at
stone benches

2 DOG RUN LIGHTING:
Canopy mounted spotlights
for general illumination,
hidden from view

3 ENTRY LIGHTING:
Low brightness
downlights at canopy

4 LOBBY LIGHTING:
Illumination through glass
wall with downlights at entry
soffit



5 LIT BOLLARDS :
Low brightness, 36" tall

6 PARKING LOT LIGHTING, BY
OTHERS





1 TERRACE LIGHTING:
Canopy mounted spotlights at 14'-0" AFF
and supplemental edge lighting at planters, for instance,
if Place of Assembly levels are required.
POA LEVELS = 1.0 FC MINIMUM THROUGHOUT

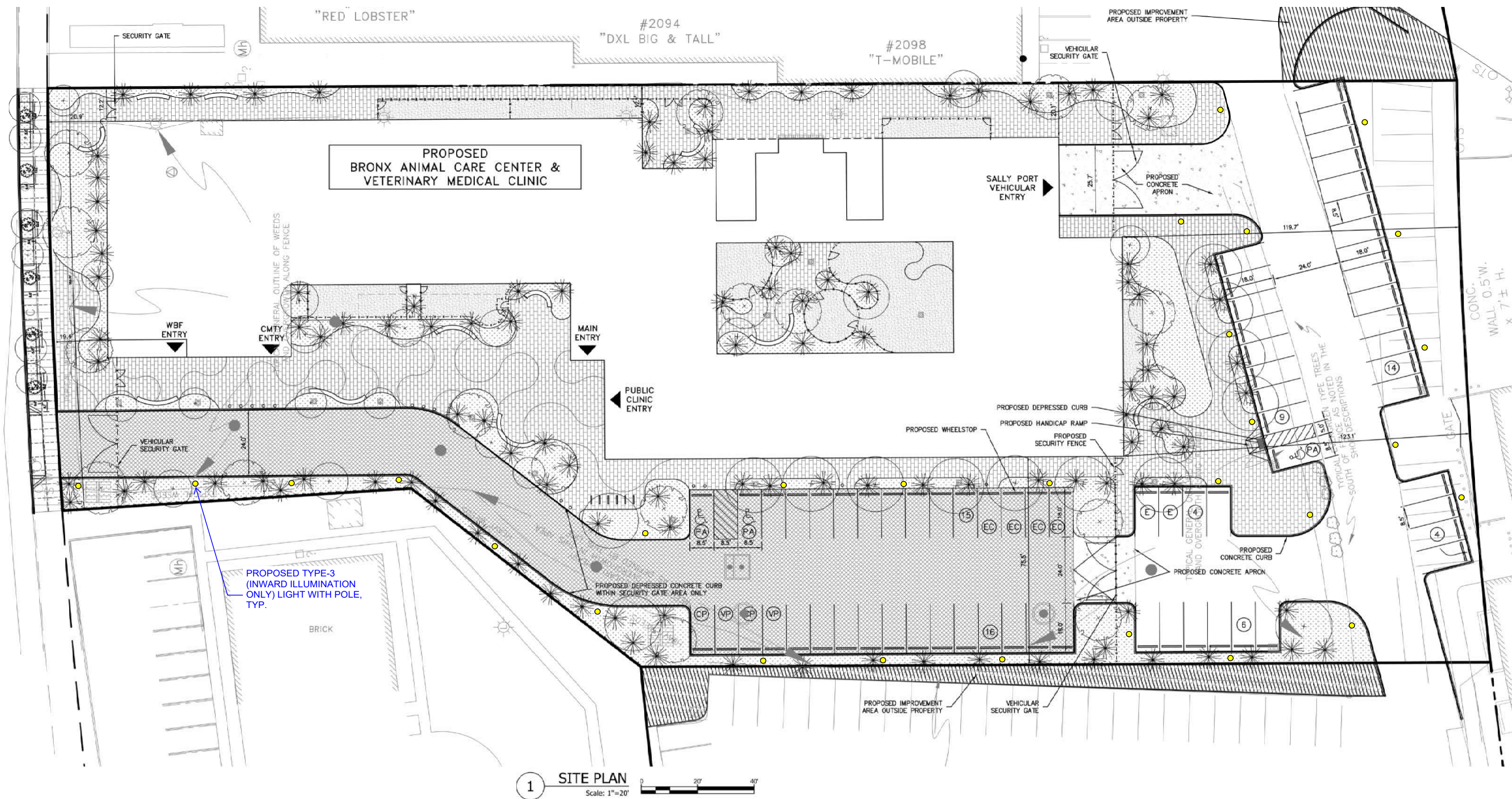


2 UNDERBENCH LIGHT:
Subtle, concealed glow at
stone benches



3 LIT BOLLARDS :
Low brightness, 36" tall







1 TERRACE LIGHTING

2 ENTRY ILLUMINATION

3 LOBBY LIGHTING

4 DRIVEWAY & PARKING LOT LIGHTING, BY OTHERS

5 LIT BOLLARDS



1 ENTRY ILLUMINATION

2 TERRACE LIGHTING

3 LOBBY LIGHTING

4 LIT BOLLARDS

5 UNDERBENCH LIGHT

6 DOG RUN

7 DRIVEWAY & PARKING LOT LIGHTING, BY OTHERS

