



## Porous Pavement in NYC

The New York City Department of Environmental Protection (DEP) is building porous pavement and other types of green infrastructure to manage stormwater in local waterways.

Porous pavement is special roadway paving that is designed to collect and manage stormwater that runs off the streets and sidewalks when it rains.

Green infrastructure is a cost-effective way to help create a sustainable New York City.

- ✓ Reduces temperature during hot weather
- ✓ Improves street drainage
- ✓ Reduces puddles and ponds
- ✓ Reduce pollution to New York City waterways



[nyc.gov/greeninfrastructure](https://nyc.gov/greeninfrastructure)

---

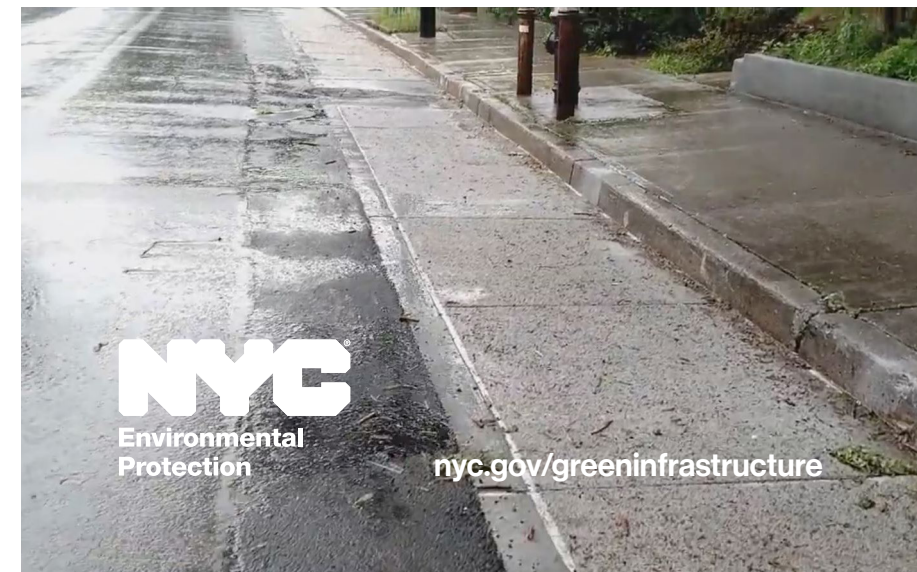
### WANT TO LEARN MORE?

Visit our website for additional information and a map of rain garden locations at [nyc.gov/greeninfrastructure](https://nyc.gov/greeninfrastructure)

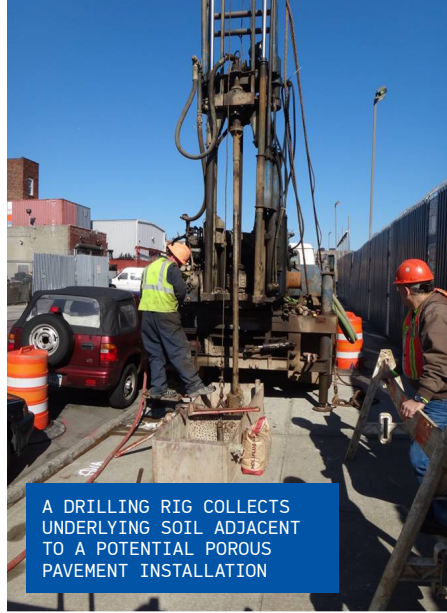
Call **311** anytime or call us directly at **(718) 595-7599**

You can also email us at [RainGardens@dep.nyc.gov](mailto:RainGardens@dep.nyc.gov)

## NYC Green Infrastructure







## Construction

During construction, the asphalt in the parking lane is removed and the material underneath is excavated to a two foot depth and backfilled. The excavated area is backfilled with stone which allows for infiltration. The asphalt surface will be replaced with four foot wide porous concrete panels.

Any sidewalk or curb that must be removed during installation will be replaced. During construction, every effort will be made to limit the impact construction activities may have on residents.

## Maintenance

- Before taking over maintenance, the City inspects each completed porous pavement installation to ensure the roadway has been constructed properly and the porous pavement collects stormwater as intended.
- The City is responsible for porous pavement maintenance. Maintenance crews will clean the porous pavement as necessary to maintain maximum infiltration and stormwater management, as well as removing noticeable debris accumulation from pollen and/or leaves on a regular basis.

To report a maintenance issue, please call 311 or visit [www.nyc.gov/311](http://www.nyc.gov/311)

## Frequently Asked Questions

### Will the porous pavement attract mosquitoes?

Mosquitoes require a minimum of 72 hours in standing water for larvae development. Porous pavement is designed to eliminate any standing water in the roadway. There will be no ponding of water on porous pavement, and overflows will continue to flow to the catch basin as is currently typical during storm events. If porous pavement does not appear to be draining properly, please call 311 or email us at [raingardens@dep.nyc.gov](mailto:raingardens@dep.nyc.gov).

### Will the porous pavement remove parking?

No, once installed, the porous pavement can be parked on or driven over, just like standard asphalt paving. There will be no change to current street parking regulations. During construction, there will be temporary parking restrictions, but will be kept at a minimum to reduce impact to the community.

### Will there be impacts to my driveway?

During construction, a Community Construction Liaison will contact all homeowners, in particular those with driveways, to coordinate installation activities to minimize impact to use of driveways. Typically, access would be limited to within the working day, and would be restored every evening, even if construction continued to the following day.

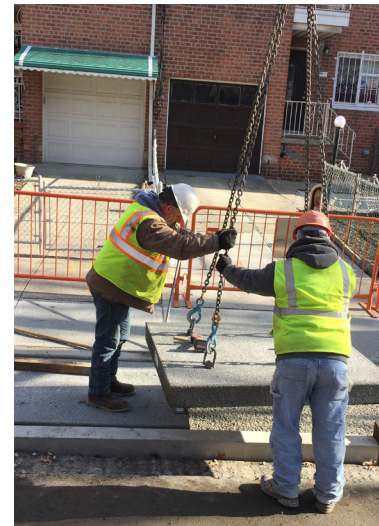
# Design & Construction

You may notice the following activities on your block during the porous pavement design and construction process.

## Selection Process

- Potential locations for drilling are marked with green spray paint. This spray paint dissolves over time. Property owners will not receive a ticket for our spray paint.
- Not all locations that receive spray paint will receive porous pavement in the adjacent roadway. All porous pavement will be installed in the roadway, not the sidewalk. This selection process can take several months.
- A drilling company is used to collect and test underlying soil to ensure that it can absorb stormwater. Only locations that effectively absorb stormwater are considered for porous pavement.
- Engineers work with utility companies to avoid conflicts with existing service lines.

CONTRACTORS INSTALL POROUS PAVEMENT IN THE ROADWAY



A FINISHED POROUS PAVEMENT INSTALLATION IN QUEENS.

