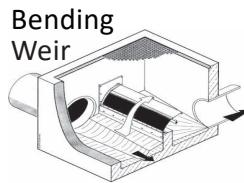


# Newtown Creek

Improving Water Quality through  
Reducing Impacts of Combined Sewer Overflows\*

## EXISTING PROJECTS

1. Brooklyn/Queens Pump Station Expansion
2. Enhanced Aeration
3. Floatables Control and Bending Weirs



## COST

**\$262M**

## STATUS

**In Operation since 2013**

**In Operation since 2018**

**In Operation since 2017**

**GREEN INFRASTRUCTURE**

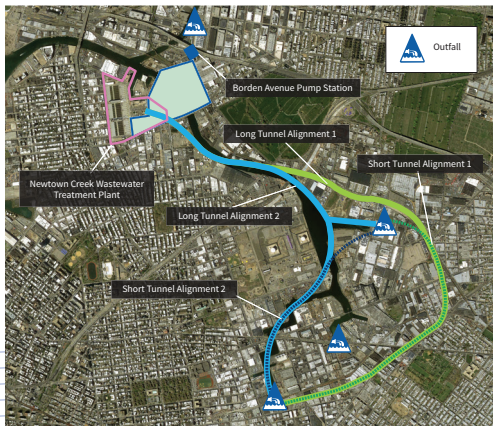
Continue to implement Green Infrastructure Program



On June 30, 2017, the City submitted a Long Term Control Plan (The Plan) for Newtown Creek to the New York State Department of Environmental Conservation (DEC). Throughout The Plan's development, the City collected water quality data, performed extensive modeling, held multiple public meetings and analyzed potential solutions based on costs and anticipated water quality benefits. DEC approved The Plan on June 27, 2018. To review the data, analysis, The Plan, Supplemental Documentation, DEC Approval and Correspondence Letters visit [www.nyc.gov/dep/ltcp](http://www.nyc.gov/dep/ltcp).

## ELEMENTS OF THE PLAN

26 MGD Borden Ave Pump Station Expansion and 39 MG CSO Storage Tunnel.



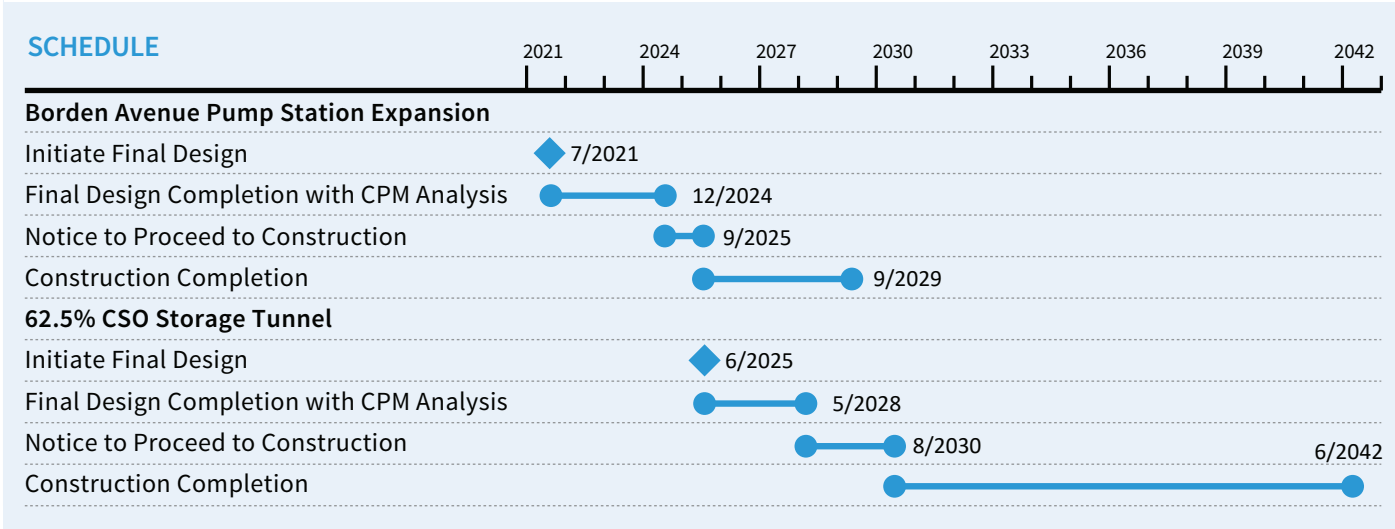
## COST

Probable Bid Cost:  
**\$597M**

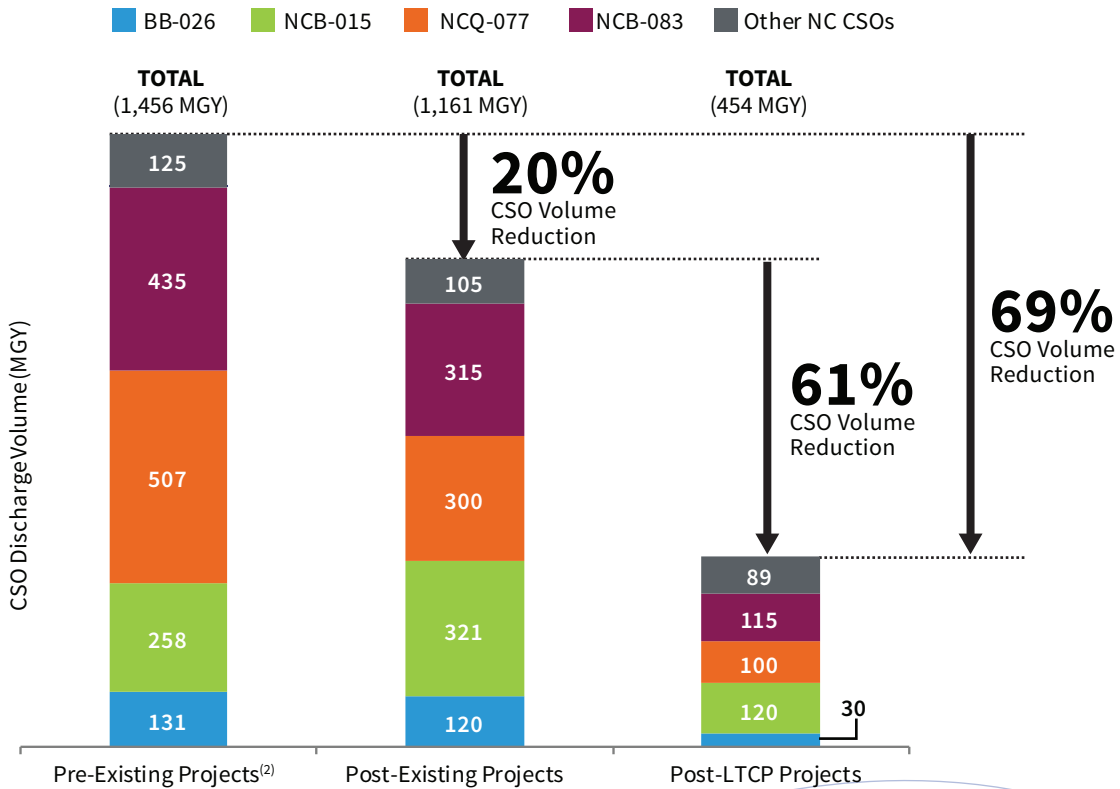
Total Escalated Cost<sup>(1)</sup>:  
**\$1,335M**

*(1) Includes Design, Design Services during Construction, Construction, and Construction Management Costs, escalated per the implementation schedule.*

\* **Combined Sewer Overflow (CSO):** When the sewer system is at full capacity, a diluted mixture of rain water and sewage may be released into local waterways. This is called a combined sewer overflow (CSO).



## BENEFITS TO NEWTOWN CREEK



<sup>(2)</sup> Pre-Existing Project CSO volumes reflect conditions without Waterbody Watershed Facility Plan (WWFP) Projects, Green Infrastructure and other sewer improvements.