



Newtown Creek CSO Storage Tunnel Project

Queens CB 2 Property Easement and Acquisition Overview

October 15, 2025



Introductions

DEP Team

Kate Edden, Bureau of Engineering Design and Construction

Alfonso Lopez, Bureau of Public Affairs & Communication

Terrell Estes, Bureau of Environmental Planning & Analysis

David Lee, Bureau of Environmental Planning & Analysis

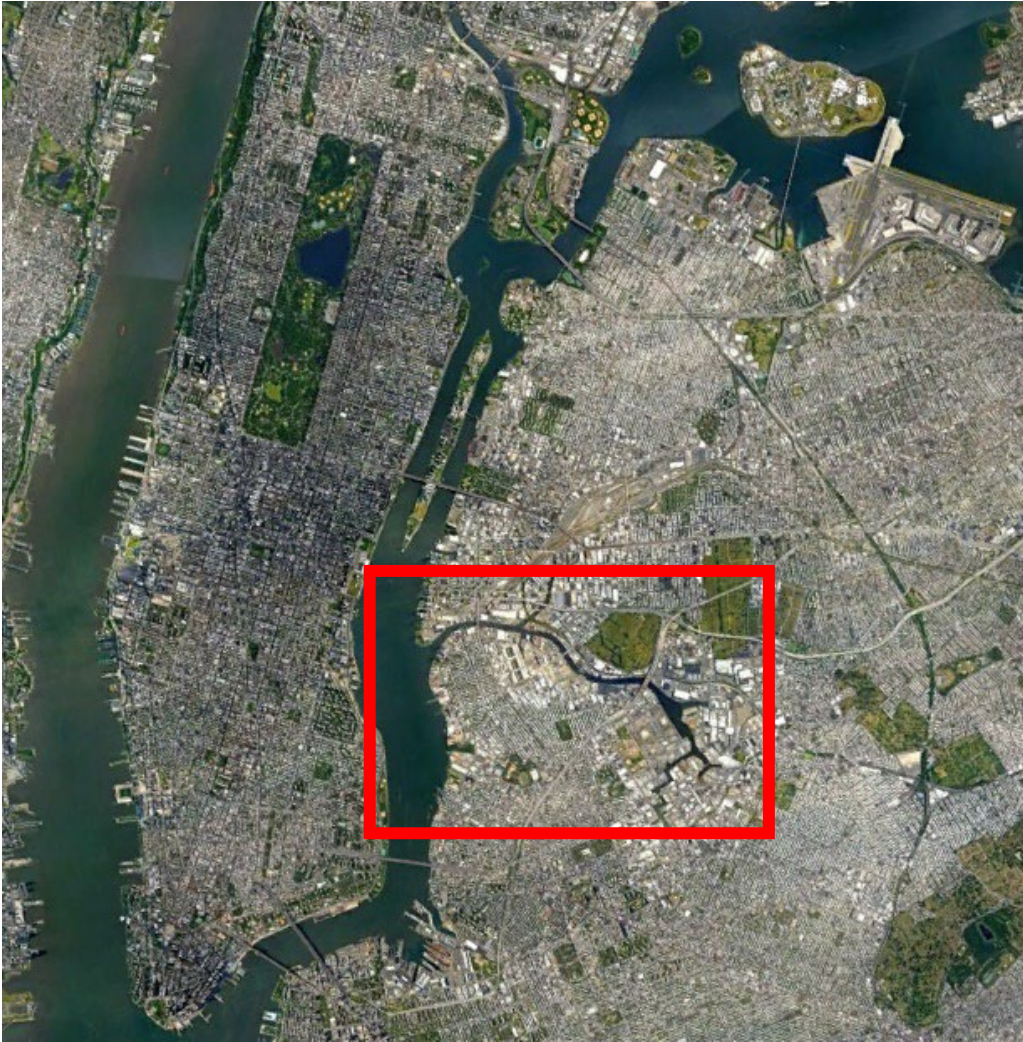
DCAS Team

Shelton Getter, Assistant Director of Leasing and Acquisitions

Agenda

- Provide background on the Newtown CSO Storage Tunnel Project
- Explanation of Combined Sewer Overflows
- Project Scope
- Briefing on forthcoming ULURP actions and schedule
- Answer any questions!

Project Location

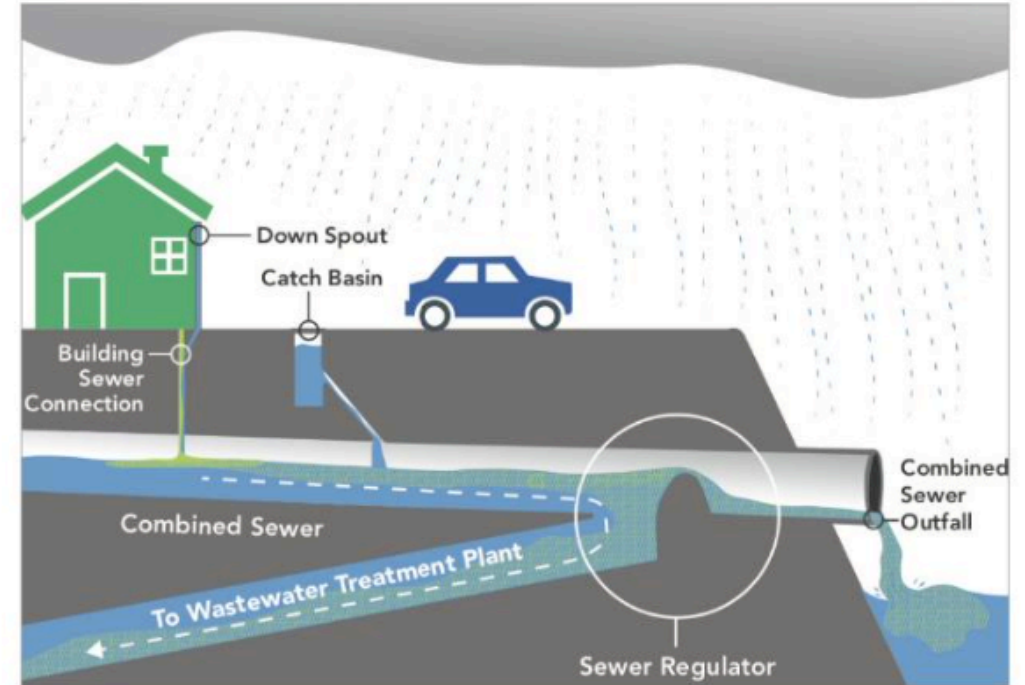
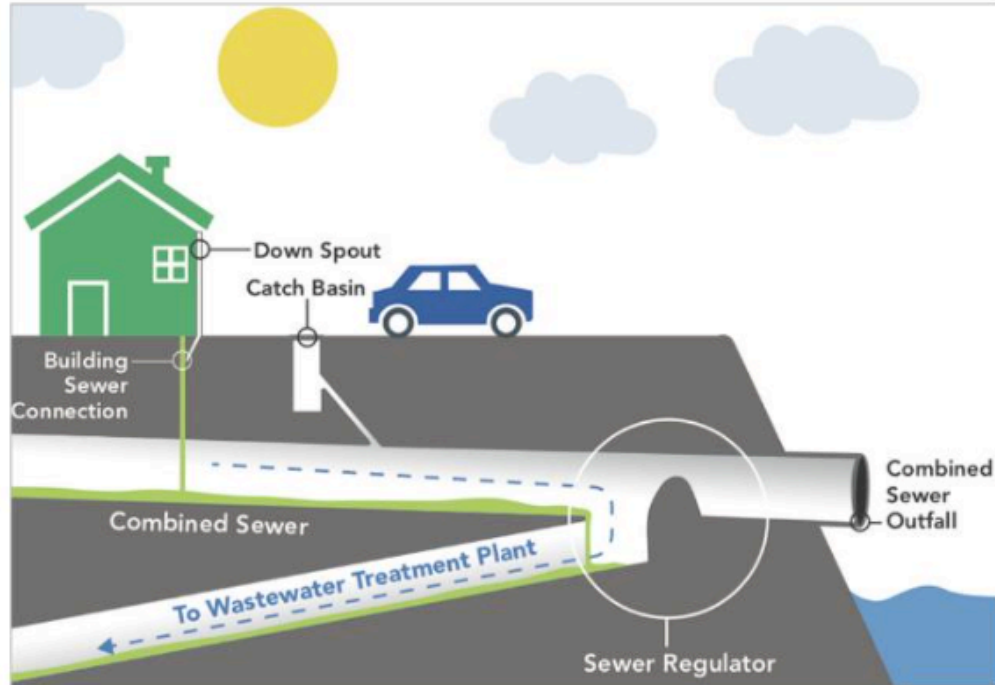


Project Background and Context

- **NYS DEC Order on Consent required DEP to provide a Long Term Control Plan (LTCP) for Newtown Creek**
 - Concluded that control of four major outfalls with a Storage Tunnel to be best solution for CSO reduction.
- **Newtown Creek designated as a Federal Superfund Site** under the Comprehensive Environmental Response, Compensation, and Liability Act (CERCLA) - September 2010



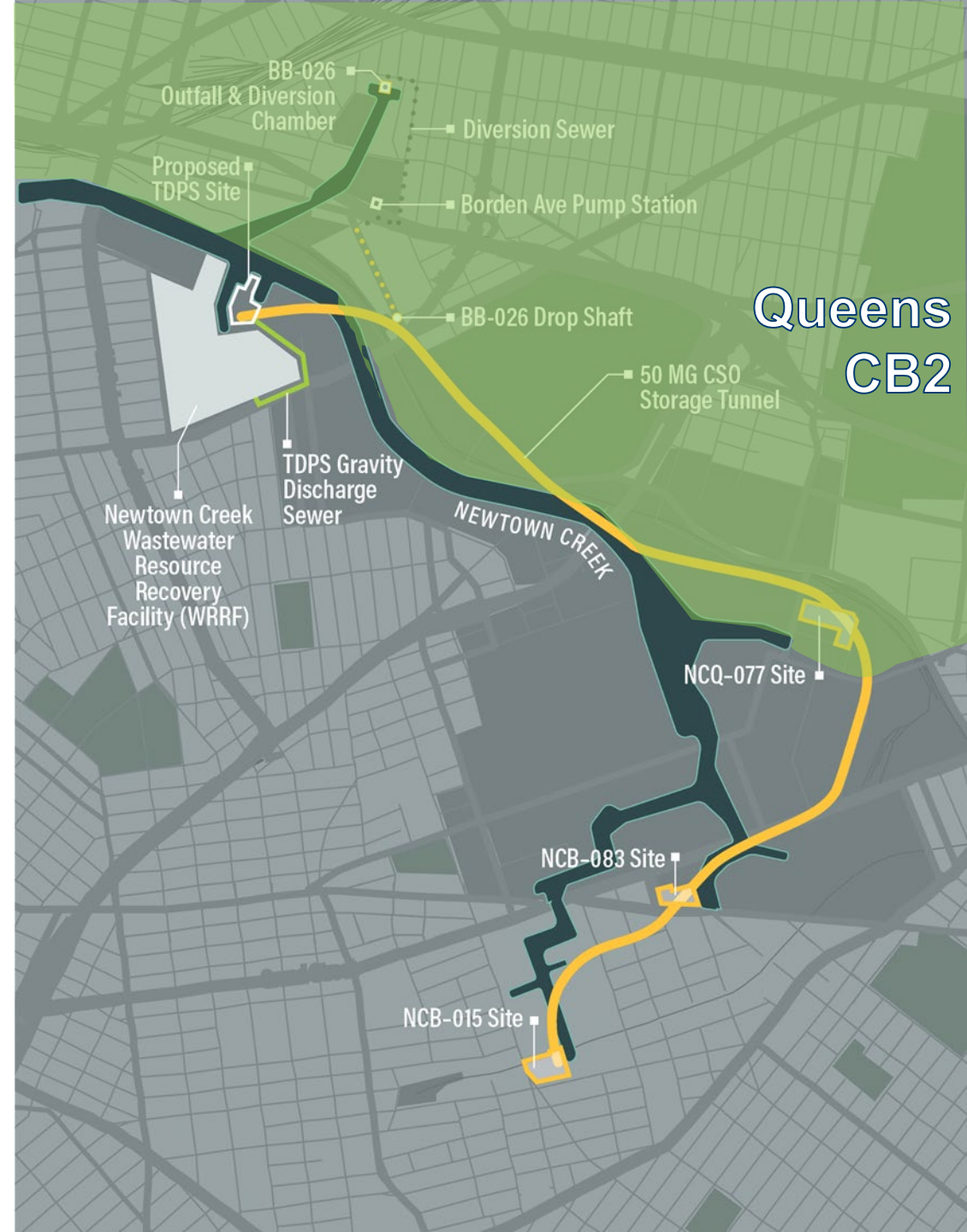
Combined Sewer Overflow (CSO)



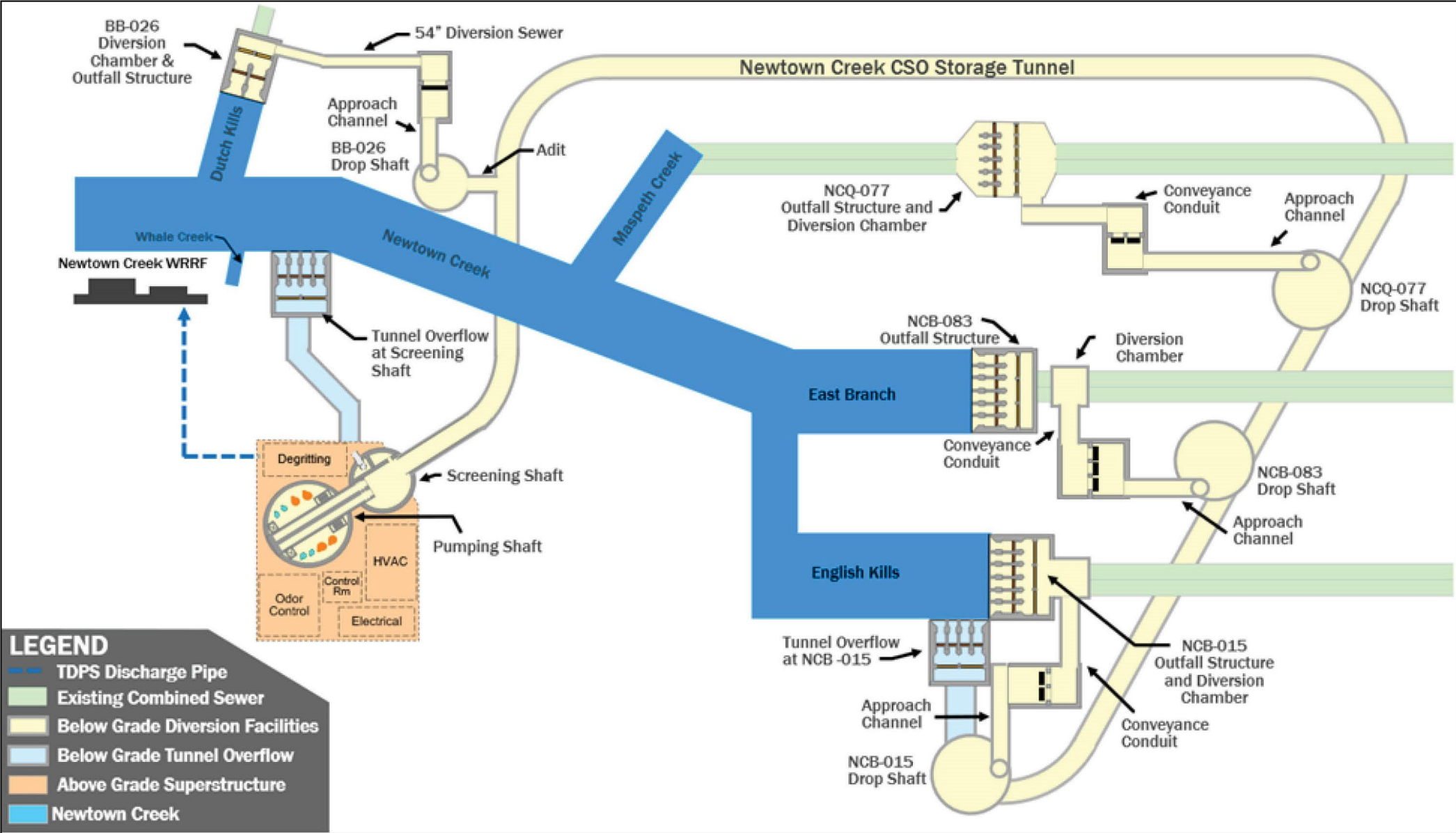
- About 60% of the city has combined sewers that collect both sanitary waste and rainwater.
- In dry weather, sewage is routed through the sewer system to one of the city's 14 wastewater resource recovery facilities for treatment.
- The system can get overwhelmed when the amount of water produced in a storm is greater than the capacity of the pipes.
- This can result in overflows into local waterways. This is called combined sewer overflow (CSO).

Project Scope

- **3-mile-long tunnel** with 50-million-gallon storage capacity
- Intercepts combined sewer overflow (CSO) from **4 major outfalls** during a storm event
- **Tunnel Dewatering Pump Station** will pump flow from tunnel to Newtown Creek Wastewater Resource Recovery Facility for treatment after a storm.
- Consent milestone for construction completion: December 2040
- Project currently in Design Phase.



CSO Tunnel System Overview



Proposed Land Use Actions

1. Site Selection & Acquisition (PC)

- ULURP # C260063PCY

2. Site Selection only (PS)

- ULURP # C260064PSY

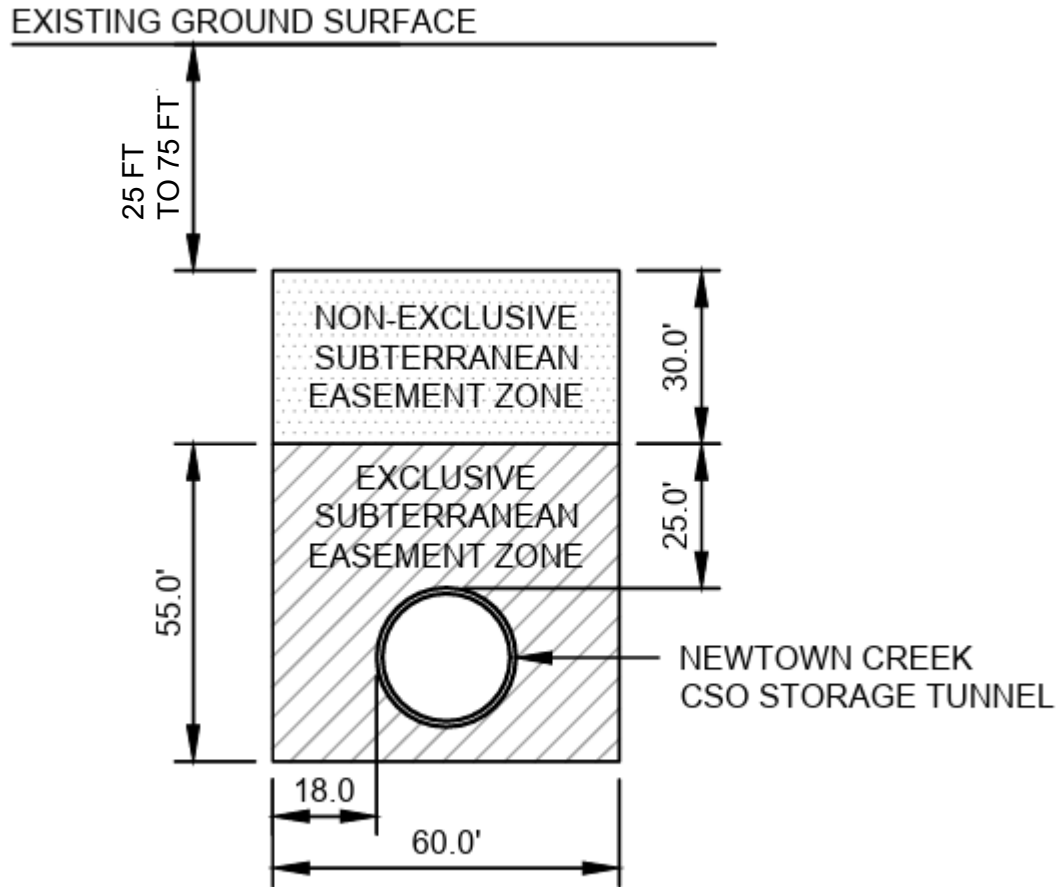


CB2 Properties Affected

- 1. Site Selection & Acquisition (PC) – 49 properties located in CB2**
 - Site Selection of a new City facility on private-property - construction of tunnel and diversion facilities
 - Acquisition approval for subterranean easements – protect tunnel from physical damage
- 2. Site Selection only (PS) – 4 properties located in CB2**
 - Site Selection of a new City facility on City-owned property - construction of tunnel and diversion facilities



Subterranean Easements



**ILLUSTRATIVE EASEMENT
SECTION**

- 44 Subterranean Easements are required in CB2
- Subterranean easement zone begins approximately 25-75 feet below the existing ground surface
- Tunnel will be 80-130 feet below ground surface
- Exact depths will be confirmed prior to design being finalized
- Future development allowed within "non-exclusive subterranean easement zone", subject to approval by with NYC DEP

NCQ-077 Facility Site Selection and Full Property Acquisitions

- Site Selection Only:
 - Block 2575; Lot 26
 - DEP-owned site
- Full Site Acquisition:
 - Block 2575; Lot 225
 - Block 2575; Lot 240
 - Privately owned parking and material storage facility



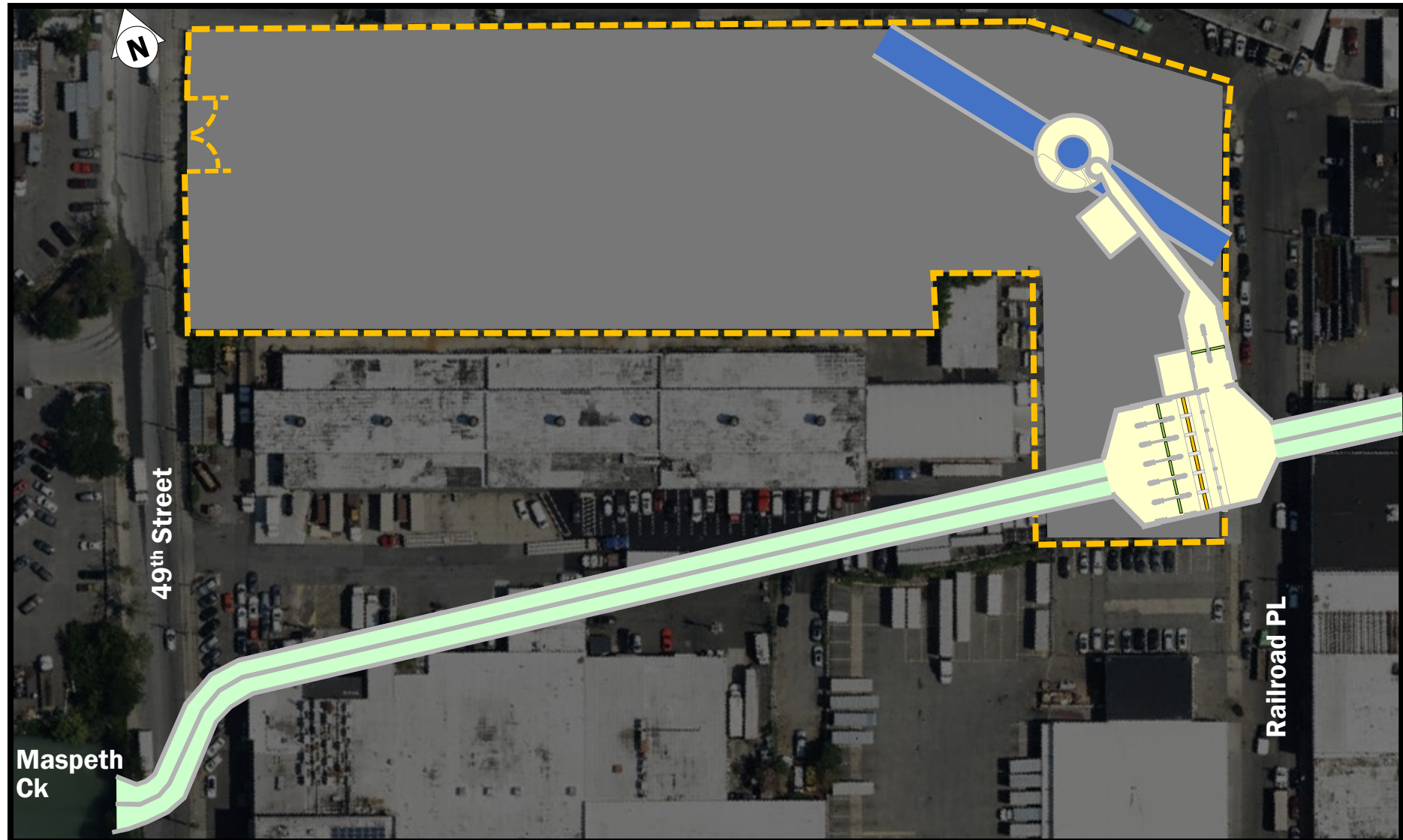
NCQ-077 Diversion Facilities and Drop Shaft Proposed Layout

Scope of Work:

- Construction of permanent NCQ-077 diversion facility with:
 - Drop shaft structure
 - Diversion chamber
 - Outfall structure
 - Tunnel overflow structure
 - Flap gate chamber
 - Approach channel
- Construction of permanent odor control system in below grade vault

LEGEND

- Site Boundary
- Existing Combined Sewer
- Existing Dry Weather Interceptor
- Below Grade Diversion Facilities
- Below Grade Tunnel Overflow
- Newtown Creek CSO Tunnel



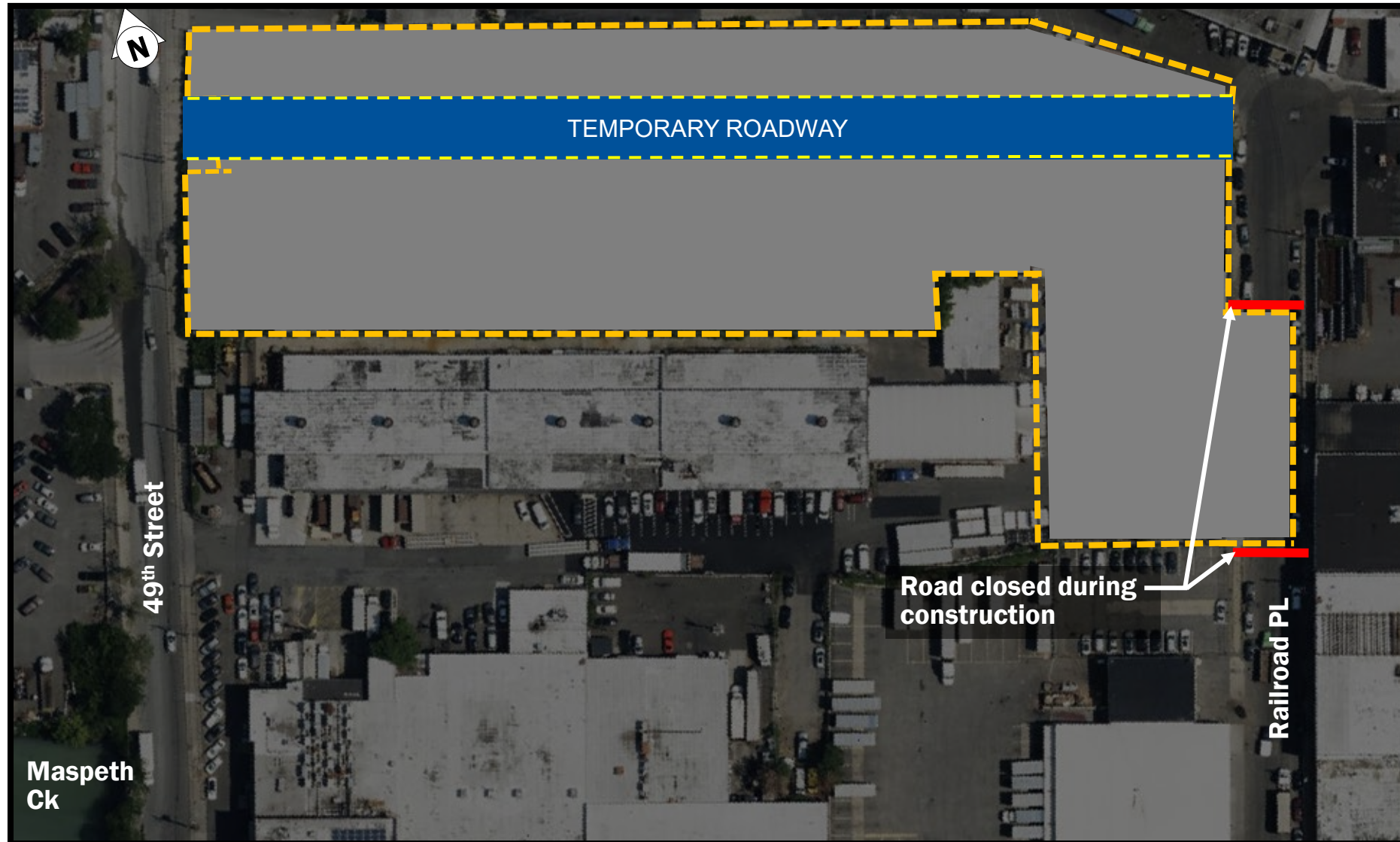
NCQ-077 Diversion Facilities and Drop Shaft Proposed Layout

Scope of Work:

- Construction of permanent NCQ-077 diversion facility with:
 - Drop shaft structure
 - Diversion chamber
 - Outfall structure
 - Tunnel overflow structure
 - Flap gate chamber
 - Approach channel
- Construction of permanent odor control system in below grade vault

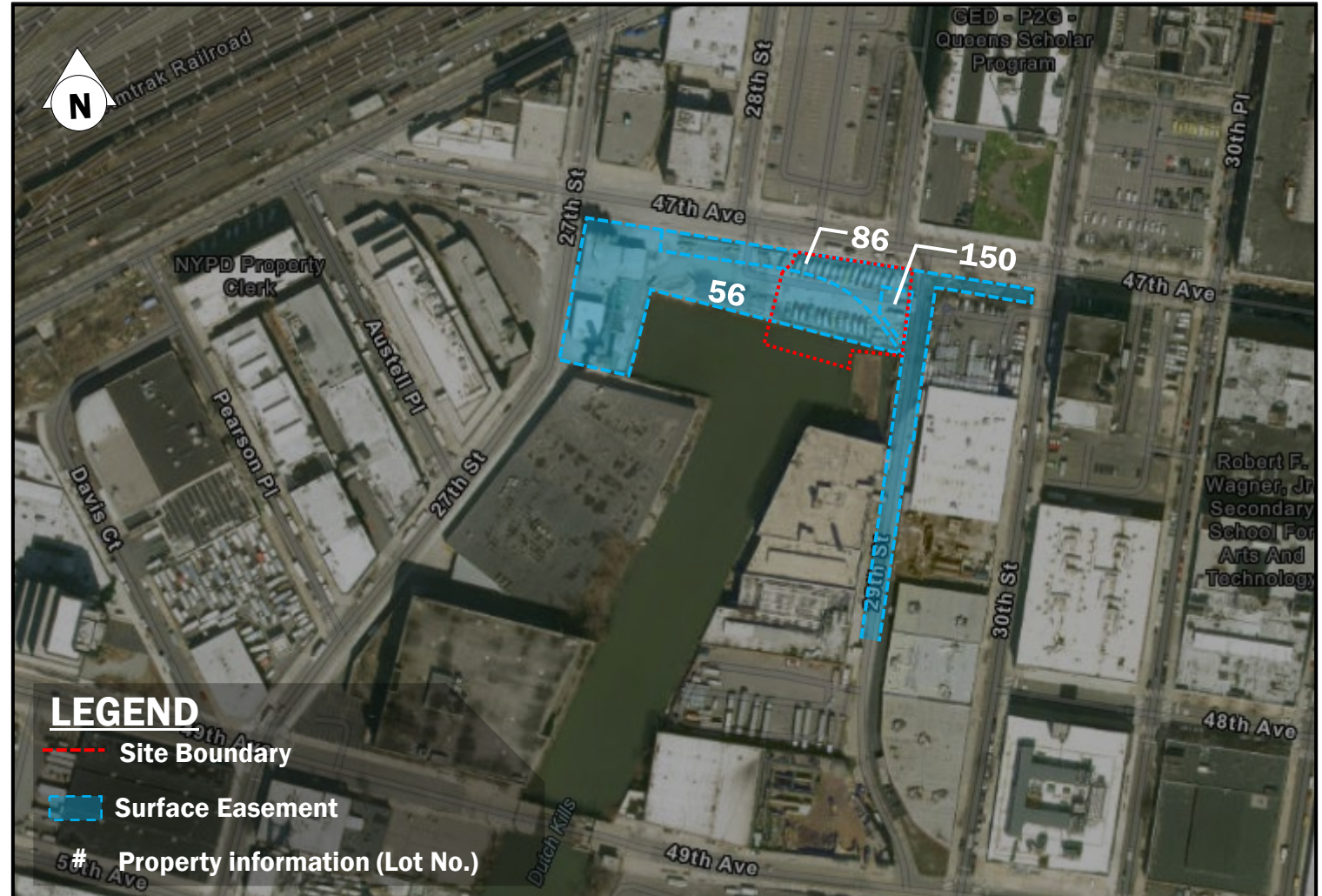
LEGEND

- Site Boundary
- Existing Combined Sewer
- Existing Dry Weather Interceptor
- Below Grade Diversion Facilities
- Below Grade Tunnel Overflow
- Newtown Creek CSO Tunnel



BB-026 Facility Permanent Surface Easements

- Surface Easements:
 - Block 115; Lot 56
 - Privately owned concrete manufacturing facility
 - Block 115 Lots 86, 150
 - MTA LIRR-owned parking facility



BB-026 Diversion Facilities Proposed Layout

- Scope of Work:
 - Construction of permanent BB-026 diversion facility with:
 - Diversion chamber
 - Outfall structure
 - Install sheet piles in Dutch Kills and dewater outfall
 - Temporary water treatment plant
 - Temporary maintenance of flow channels during construction
 - Gravity diversion sewer connection to subgrade drop shaft in City ROW



Source: October 2024 Newtown Creek Combined Sewer Overflow Storage Tunnel – Basis of Design Report

NOTE: CONCEPTUAL DESIGN

Environmental Impact Statement (EIS)

Impact Categories Assessed	
Land Use, Zoning, and Public Policy	Solid Waste and Sanitation Services
Socioeconomic Conditions	Energy
Community Facilities and Services	Transportation
Open Space and Recreation	Air Quality
Shadows	Greenhouse Gas Emissions
Historic and Cultural Resources	Noise
Urban Design and Visual Resources	Public Health
Natural Resources	Neighborhood Character
Hazardous Materials	Environmental Justice
Mitigation	Alternatives

Link to DEIS:

<https://www.nyc.gov/site/dep/about/newtown-creek-cso-storage-tunnel-project.page>

Environmental Impact Statement (EIS)

Impact Categories Assessed	
Land Use, Zoning, and Public Policy	Solid Waste and Sanitation Services
Socioeconomic Conditions	Energy
Community Facilities and Services	Transportation
Open Space and Recreation	Air Quality
Shadows	Greenhouse Gas Emissions
Historic and Cultural Resources	Noise
Urban Design and Visual Resources	Public Health
Natural Resources	Neighborhood Character
Hazardous Materials	Environmental Justice
Mitigation	Alternatives

Link to DEIS:

<https://www.nyc.gov/site/dep/about/newtown-creek-cso-storage-tunnel-project.page>

ULURP Process

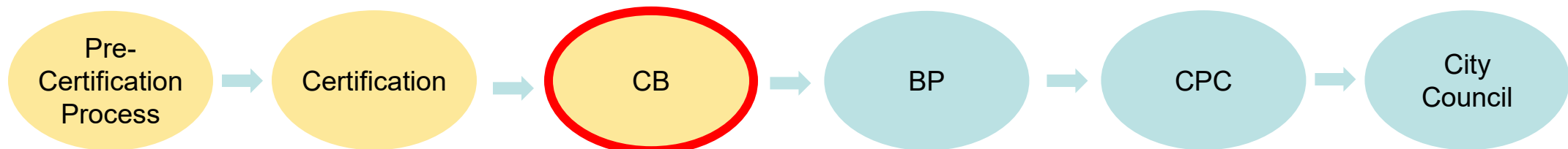
Project was certified into ULURP on September 15 and is currently in the Community Board review phase

Pre-Certification Milestones:

- Draft Scope of Work Published – February 5, 2025
- Scoping Meeting Held – March 12, 2025

Key Schedule Milestones:

- September 2025: Draft Environmental Impact Statement (EIS) complete
- September 2025: ULURP application certified, begin City review
- February 2026: Final Environmental Impact Statement (EIS) complete
- April 2026: ULURP Completion



Current Schedule

Milestone	Date/Timeframe
ULURP Certification (Public Review Begins)	September 15, 2025
Community Boards BK1, QN2 and QN5 Review (60 Days)	September – November
Queens and Brooklyn Borough Presidents Review (30 Days)	November – December
City Planning Commission Review (60 Days) – <i>CPC Public Hearing/DEIS Hearing</i>	December – February 2026
<i>Final Environmental Impact Statement Issued</i>	February 2026
City Council Review (50 Days)	February – April 2026
ULURP Complete	April 2026

Land Acquisition and Property Construction Schedule

[illegible]

ULURP Complete

Questions?