

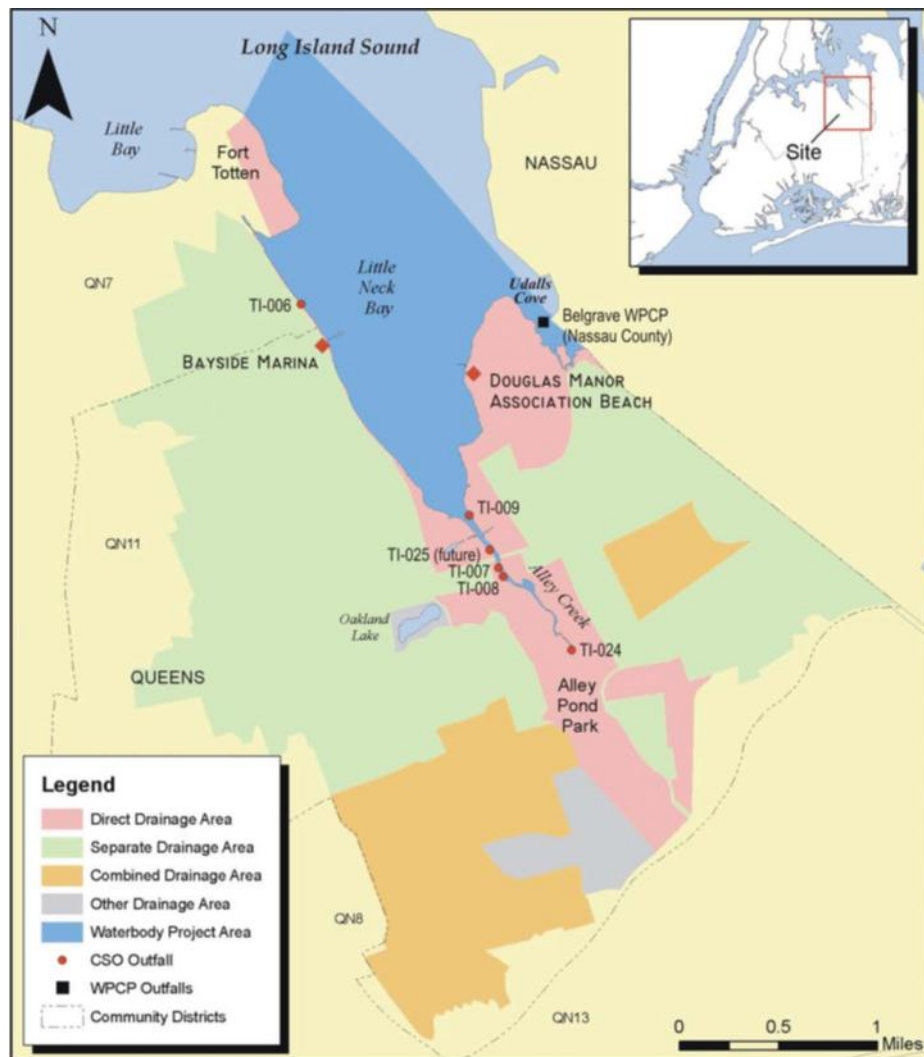


# **Public Outreach for Alley Creek LTCP**

---

Queens Borough President Office  
September 12, 2012

- ❖ Combined Sewer Overflows (CSOs): During wet weather when stormwater is combined with sanitary flows in combined sewers and the excess is discharged through outfalls to the local receiving waterbody.
- ❖ Approximately 45% of NYC is in a combined sewer area; 55% in other drainage area types (e.g., separate).
- ❖ CSOs can negatively impact water quality of the receiving waterbody.
- ❖ Alley Creek is a waterbody that has CSO discharges.



New York City  
Department of Environmental Protection

Alley Creek and Little Neck Bay Waterbody/Watershed Facility Plan

Alley Creek and Little Neck Bay  
Waterbody/Watershed Assessment Area

FIGURE 1-2

- ❖ Current New York State mandated solution is to develop a Long Term Control Plan (LTCP).
- ❖ What is an LTCP?
  - Comprehensive evaluation of long term solutions, to reduce CSOs and improve water quality in NYC's waterbodies and waterways.
  - The goal of each LTCP is to identify appropriate CSO controls necessary to achieve waterbody-specific water quality standards, consistent with the Federal CSO Policy and water quality goals of the Clean Water Act.
- ❖ The LTCP process requires a robust, targeted public process.





**Aerial Photo of Alley Creek Watershed**



**Phase 2: 5 MG CSO Storage Tank (\$33M)**



**Phase 1: Outfall and Sewer Improvements (\$99M)**



**Phase 3: Ecological Restoration (\$20M)**

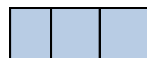


- ❖ **Goal:** Raise awareness about, foster understanding of and encourage input on the development of waterbody specific and citywide LTCPs.
  
- ❖ **Approach:** Establish a framework for communicating with and encouraging input from interested stakeholders and the broader public on water quality and the challenges and opportunities for CSO controls.
  
- ❖ **Primary Strategies**
  - Use various existing forums to educate a broad array of stakeholder groups and encourage community input from within specific watersheds; and
  - Provide a forum for sustained regional participation and input in the development of the citywide LTCP program.



- ❖ Multi-pronged approach that includes a diverse set of public participation activities:
  - Annual citywide public meetings rotating across boroughs
  - Local open houses in each watershed
  - Presentations at existing forums including Community Boards and community, business, environmental and recreational organizations to provide updates and solicit input
  - Regular briefings for elected officials and their staff
  - Data collection from broad public through surveys, traveling kiosks and information repositories
  - Variety of communication tools including program website, social media, advisories and notifications

| LTCP                      | 2012 |    |    |    | 2013 |    |    |    | 2014 |    |    |    | 2015 |    |    |    | 2016 |    |    |    | 2017 |    |    |    | 2018 |    |    |    |
|---------------------------|------|----|----|----|------|----|----|----|------|----|----|----|------|----|----|----|------|----|----|----|------|----|----|----|------|----|----|----|
|                           | Q1   | Q2 | Q3 | Q4 | Q1   | Q2 | Q3 | Q4 | Q1   | Q2 | Q3 | Q4 | Q1   | Q2 | Q3 | Q4 | Q1   | Q2 | Q3 | Q4 | Q1   | Q2 | Q3 | Q4 | Q1   | Q2 | Q3 | Q4 |
| Alley Creek               |      |    |    |    |      | ★  |    |    |      |    |    |    |      |    |    |    |      |    |    |    |      |    |    |    |      |    |    |    |
| Coney Island              |      |    |    |    |      |    |    |    |      | ★  |    |    |      |    |    |    |      |    |    |    |      |    |    |    |      |    |    |    |
| Hutchinson River          |      |    |    |    |      |    |    |    |      |    | ★  |    |      |    |    |    |      |    |    |    |      |    |    |    |      |    |    |    |
| Flushing Creek            |      |    |    |    |      |    |    |    |      |    |    | ★  |      |    |    |    |      |    |    |    |      |    |    |    |      |    |    |    |
| Gowanus Canal             |      |    |    |    |      |    |    |    |      |    |    |    |      | ★  |    |    |      |    |    |    |      |    |    |    |      |    |    |    |
| Bronx River               |      |    |    |    |      |    |    |    |      |    |    |    |      | ★  |    |    |      |    |    |    |      |    |    |    |      |    |    |    |
| Jamaica Bay & Tributaries |      |    |    |    |      |    |    |    |      |    |    |    |      |    |    |    |      | ★  |    |    |      |    |    |    |      |    |    |    |
| Flushing Bay              |      |    |    |    |      |    |    |    |      |    |    |    |      |    |    |    |      | ★  |    |    |      |    |    |    |      |    |    |    |
| Westchester Creek         |      |    |    |    |      |    |    |    |      |    |    |    |      |    |    |    |      |    |    |    |      | ★  |    |    |      |    |    |    |
| Newtown Creek             |      |    |    |    |      |    |    |    |      |    |    |    |      |    |    |    |      |    |    |    |      | ★  |    |    |      |    |    |    |
| Citywide                  |      |    |    |    |      |    |    |    |      |    |    |    |      |    |    |    |      |    |    |    |      |    |    | ★  |      |    |    |    |



LTCP Development and Public Participation Schedule



LTCP Submittal to DEC



## **Alley Creek LTCP Public Kickoff Meeting**

October 24, 2012

5:30pm to 8:00pm

Alley Pond Environmental Center

228-06 Northern Boulevard

Douglaston, NY 11362

Reservations not required

Additional information available at: [www.nyc.gov/dep/ltcp](http://www.nyc.gov/dep/ltcp)

Inquiries can be made to: [ltcp@dep.nyc.gov](mailto:ltcp@dep.nyc.gov)