



Environmental
Protection

Draft Scope of Work for the Gowanus Canal CSO Facilities Project Environmental Impact Statement

Public Meeting

May 4, 2017

- City Environmental Quality Review Process Overview
- General Project Overview
- Draft Scope of Work Overview
- Public Comments

- DEP's environmental review for the Gowanus CSO Facilities Project is being prepared pursuant to:
 - Article 8 of the Environmental Conservation Law establishing the State Environmental Quality Review Act (SEQRA) and its regulations as set forth in 6 NYCRR Part 617, and
 - New York City's Environmental Quality Review (CEQR) as set forth in 62 RCNY Chapter 5 and New York City Executive Order 91 of 1977 and its amendments.
- Using methodology set forth in the 2014 CEQR Technical Manual

- Clean Water Act of 1972
 - Bring water quality into compliance with NYSDEC's water quality standards for **pathogens** and **dissolved oxygen**
- Comprehensive Environmental Response, Contribution and Liability Act of 1980 (CERCLA or Superfund)
 - Remediation of chemical contaminants from surface waters and sediments
 - Focus on hazardous substances such as **polycyclic aromatic hydrocarbons (PAHs)**, **polychlorinated biphenyls (PCBs)**, **pesticides**, and **metals**.
 - Prevent future releases of hazardous substances to canal

Design CSO tank facilities to intercept and store combined sewer overflow solids to meet USEPA's estimated Preliminary Remediation Goals.

Head End Facility

RH-034 Outfall

Red Hook WWTP Watershed Area

8 Million Gallons

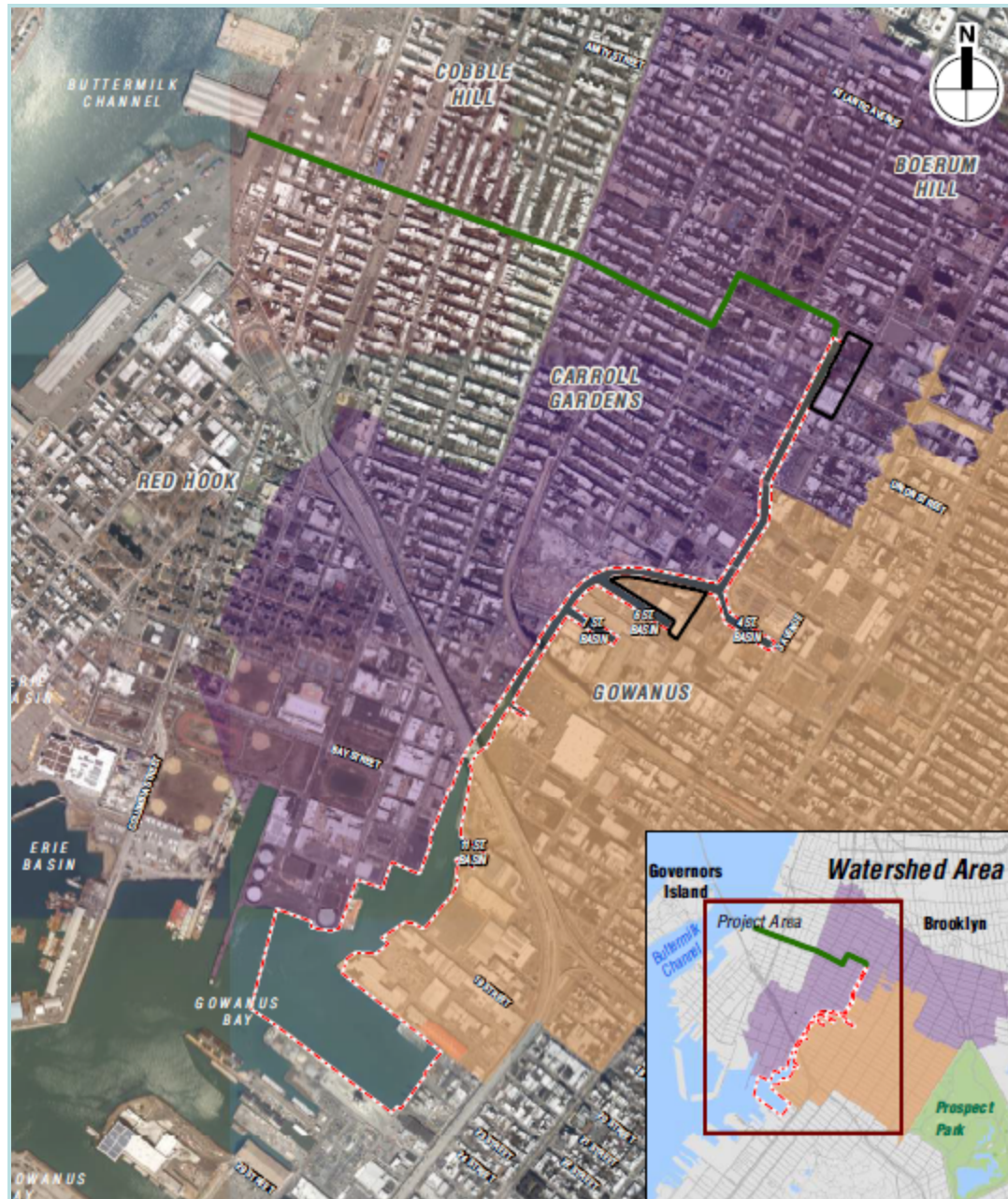
Owls Head Facility

OH-007 Outfall

Owls Head WWTP Watershed Area

4 Million Gallons

Project Location – Watershed Areas



Project Location – Sites



■ Pumping Station Upgrades – 2014

- Increased pumping capacity from 20 – 30 MGD
- Reduced CSO volume by 34%
- Added screening for CSOs up to 200 MGD

■ Flushing Tunnel Upgrades – 2014

- 3 pumps, average 215 MGD
- New automated screens
- Improved dissolved oxygen

■ Green Infrastructure & High Level Storm Sewer

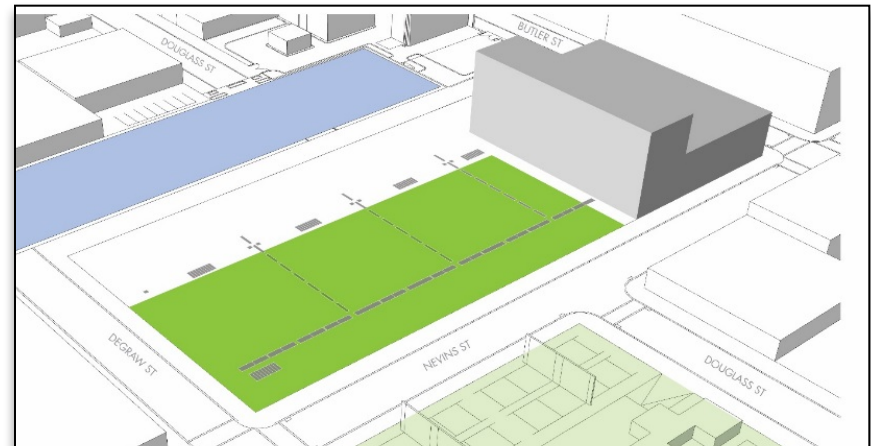
- Reduce flooding, runoff
- Relieve sewer capacity
 - 100 Raingardens built
 - HLSS (Phase 1 – 2018)

**Canal meets
existing CWA
Primary Contact
Recreation
Standards
following Pump
Station & Flushing
Tunnel Upgrades**



Red Hook Facility

- Capture flow from RH-034 and nearby RH-033, RH-038, RH-037
- Gravity In → Storage → Pump to WWTP
- Reduce CSO volume by ~ 82%, solids by ~ 93%
- ~ 52,000 sf below grade structure
- ~ 25,700 sf two-story above grade structure
- Equipment: screens, pumps, odor control, electrical/instrumentation, gates
- Nevins Street Pumping Station Upgrade
- Resilient & Sustainable
- Community Waterfront Access
- Landscaping



Owls Head Facility

- Capture flow from OH-007
- Gravity In → Storage → Pump to Red Hook WWTP
- Reduce CSO volume by ~ 87%, solids by ~ 95%
- ~ 31,000 sf below grade structure
- ~ 17,600 sf two-story above grade structure
- Equipment: screens, pumps, odor control, electrical/instrumentation, gates
- Resilient & Sustainable
- 2nd Avenue Pumping Station Upgrade
- Bulkhead Repair/Replace
- Existing sewer infrastructure upgrades
- DSNY Salt Storage
- Composting Facility

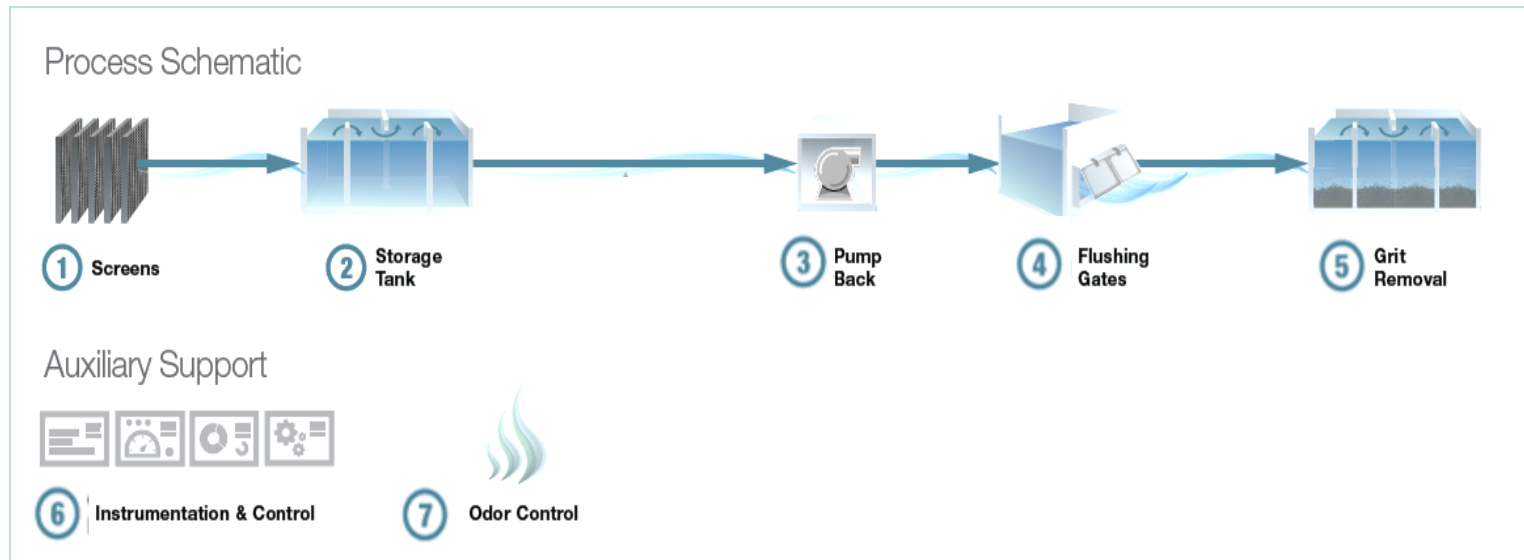


Proposed Project Elements

- Large Scale Excavation, Construction
- Contaminated Soil and Groundwater
- Utility Congestion
- 100-150 Year Old Infrastructure
- Land Acquisition
- Construction at Waterfront Properties
- Coordination with Gowanus PLACES Neighborhood Planning Study
- Coordination with In-Canal and Upland Site Remediation Activities



- Remotely operated
- Staff access daily to perform regular maintenance
- ~ 40-50 activations per year during storm events
- Odor control
- Screening & grit removal after each activation

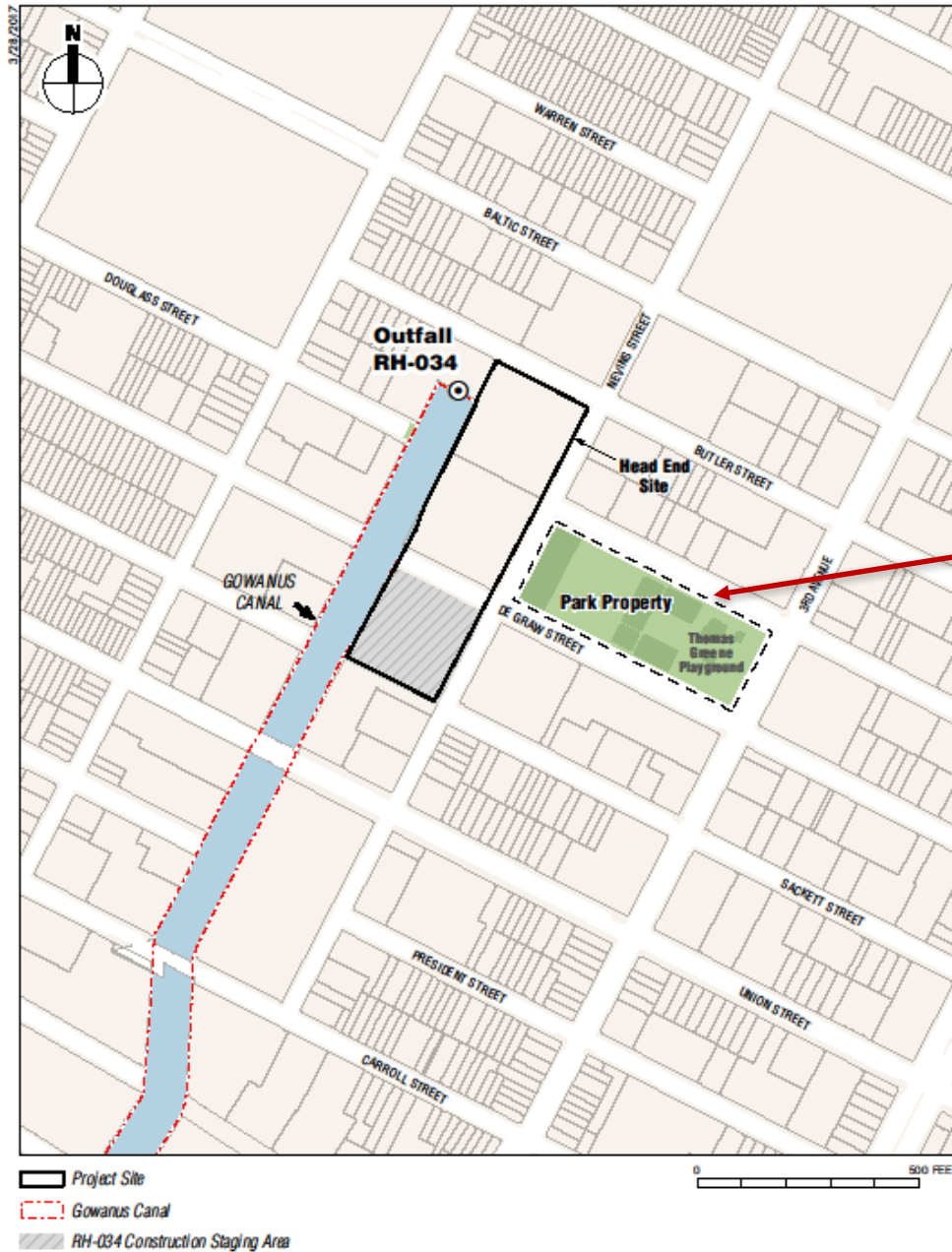


- One Environmental Impact Statement (EIS) that encompasses and discloses potential adverse significant environmental impacts from the construction and operation of two combined sewer overflow (CSO) tank facilities.
- DEP is currently pursuing acquisition of the Head End Site, and EIS process will integrate with that ULURP review. ULURP and acquisition for the Owls Head Site will follow later, using this EIS with any updates as necessary.
- Alternatives to the preferred action will be discussed.

Impact Categories Assessed	
Land Use, Zoning, and Public Policy	Community Facilities and Services
Socioeconomic Conditions	Solid Waste and Sanitation Services
Greenhouse Gas Emissions and Climate Change	Visual Resources
Open Space and Recreation	Energy
Construction	Transportation
Historic and Cultural Resources	Air Quality
Natural Resources	Noise
Hazardous Materials	Neighborhood Character
Water and Sewer Infrastructure	Public Health
Alternatives	

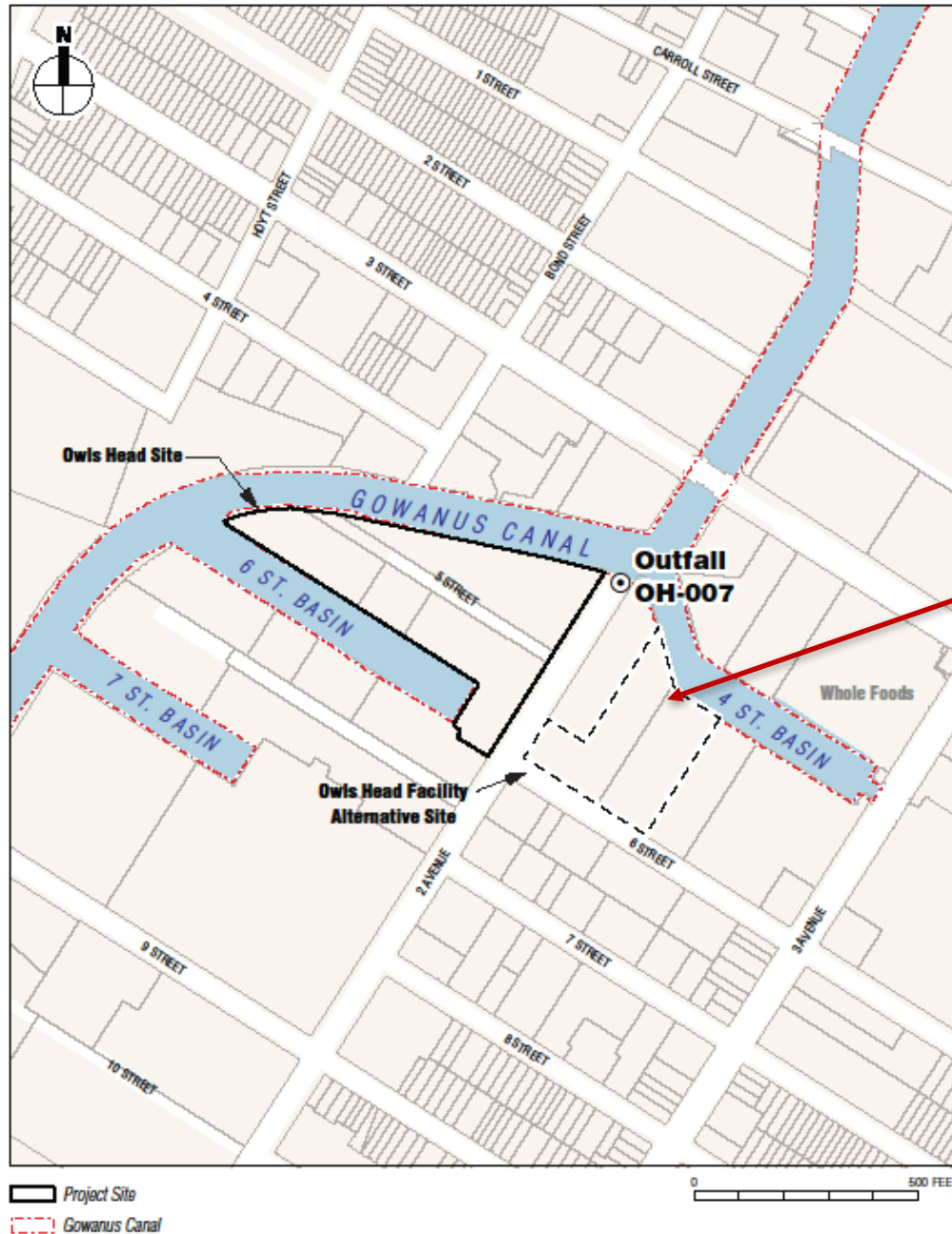
- Thomas Greene Playground Site as location for Head End Facility Alternative
- Owls Head Facility Alternative Site located on 6th Street

Head End Alternative Site



Alternative
Site for
CSO
Facility

Owls Head Alternative Site



Alternative
Site for
CSO
Facility

Planned EIS Schedule

Draft Scope of Work	April 4th, 2017
Public Scoping Meeting	May 4 th , 2017 P.S. 32 317 Hoyt Street Brooklyn, NY 11231
Written Comment Period Closes	May 14 th , 2017 (Remains open the following business day, May 15 th)
Draft Environmental Impact Statement	Fall 2017
Final Environmental Impact Statement	Spring 2018

Public Comments

- Draft Scope of Work available at the local repository or online at www.nyc.gov/dep
- Draft Scope of Work issued on April 4th, 2017
- Written comments will be accepted until the business day after May 14th, 2017
- Send comments to:

By mail:

Rasheed Lucas, Project Manager
Wastewater and Special Projects
Bureau of Environmental Planning and Analysis
New York City Department of Environmental Protection
59-17 Junction Boulevard, 11th Floor
Flushing, NY 11373

By email:

RLucas@dep.nyc.gov – Please use the subject heading “GOWANUS CSO DSOW COMMENT.”

Thank You!