



# NYC Wastewater Resiliency Program

---

- Manage EHS in line with scope, schedule, and budget
- Provide competent and qualified EHS staff including management oversight
- Submit JHAs on a timely basis and address appropriate areas of work
- Conduct daily toolbox / tailgate meetings
- Ensure required and appropriate PPE is always worn on site
- Be alert to safety at all times

## **WATER SUPPLY**

- Deliver one billion gallons of water to nine million New Yorkers every day and maintain 7,000 miles of water mains
- Protect our 2,000 square mile watershed, including 19 reservoirs and three controlled lakes



## **WASTEWATER TREATMENT**

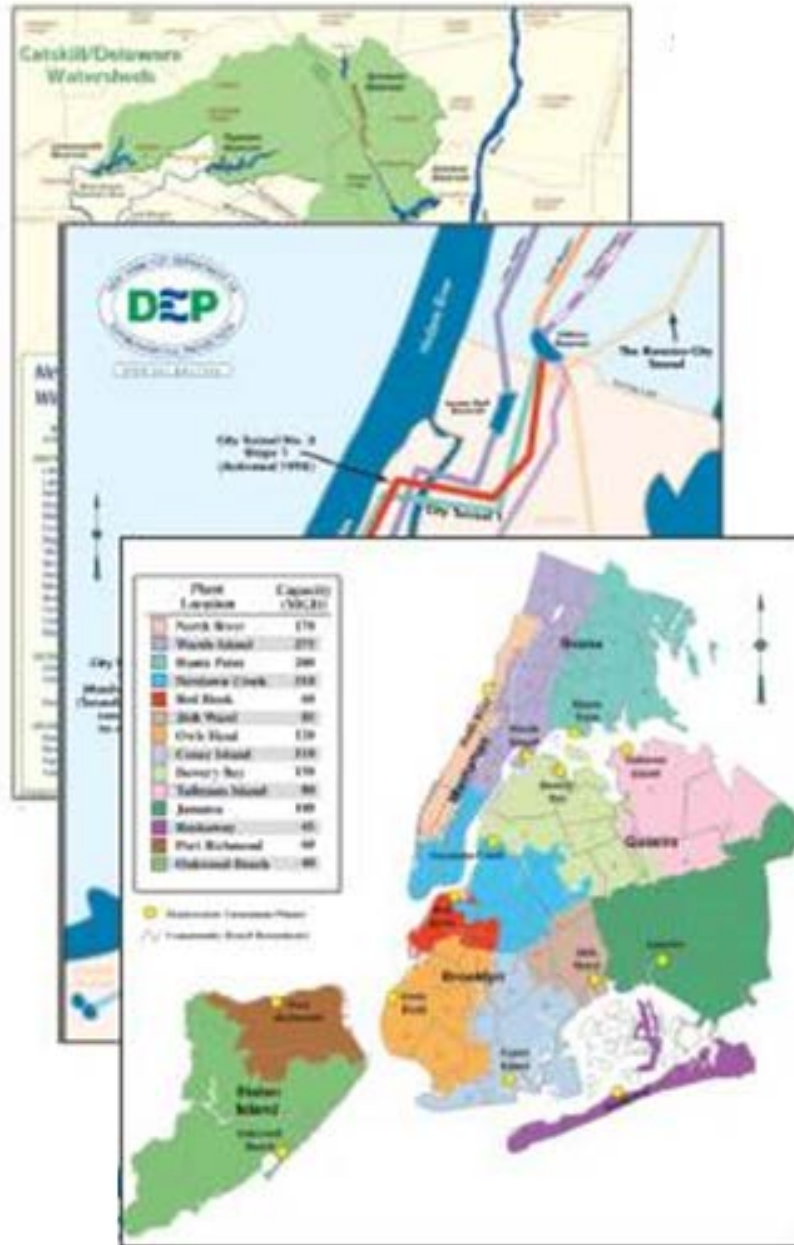
- Treat 1.3 billion gallons of wastewater each day
- Operate and maintain 14 plants, 96 pumping stations, and 7,500 miles of sewers



## **AIR, NOISE, AND HAZARDOUS WASTE**

- Update and enforce the Air Code to reduce local emissions, and regulate hazardous waste and noise pollution





- **Bureau of Engineering Design & Construction (BEDC)** develops, executes and transitions capital projects to:
- **Bureau of Water Supply (BWS):**
  - Conveys ~1 billion gallons of drinking water daily
    - 1.2 million acre watershed
    - 19 reservoirs & 3 controlled lakes
- **Bureau of Water & Sewer Operations (BWSO):**
  - Operation and Maintenance of the City's drinking water distribution and wastewater collection systems
- **Bureau of Wastewater Treatment (BWT)** treats ~1,200 million gallons of wastewater daily through:
  - 14 wastewater treatment plants
  - 96 Pumping Stations
  - 4 CSO storage facilities

## **BEDC's Mission**

To run the safest most environmentally compliant capital construction program in the United States. No accidents, no harm to people, and no harm to the environment.

## **BEDC Core Values**

SAFETY

QUALITY

SCHEDULE

BUDGET

CLIENT SERVICE



- EHS Orientation
- 10hr OSHA Construction Training
- EHS Standards
- Hazard-Specific Training
- Confined Space Entry
- LOTO
- Hazardous Materials
- Housekeeping
- Material Equipment Handling

- Harden DEP facilities against extreme weather events
- Construction Activity locations
  - Wastewater Treatment Plants
  - Pumping Stations
  - Combined Sewer Outflow (CSO) Storage Facility
  - Landfills
- Funding Sources
  - New York State: Environmental Facilities Corporation (EFC)
  - Federal: FEMA



FEMA





# Scope Item Example – Elevate / Flood Proof

- Elevate small pumps
- Flood-proof sludge pumps by replacing with submersible
- Elevate control panels and instrumentation



**Elevate Panels**



**Elevate Panels**



**Submersible pump**



- Add Sealants, Waterproof Doors/Hatches, Seal Penetrations and Reroute Vents
- Install Watertight Doors
- Install Watertight Windows
- Raise Vents and Louvers



**Flood Barrier**



**Flood Prevention Panel**



**Flood-Proof Door**

# Scope Item Example – Conduit Repair / Replace



**Overhead  
conduit runs**

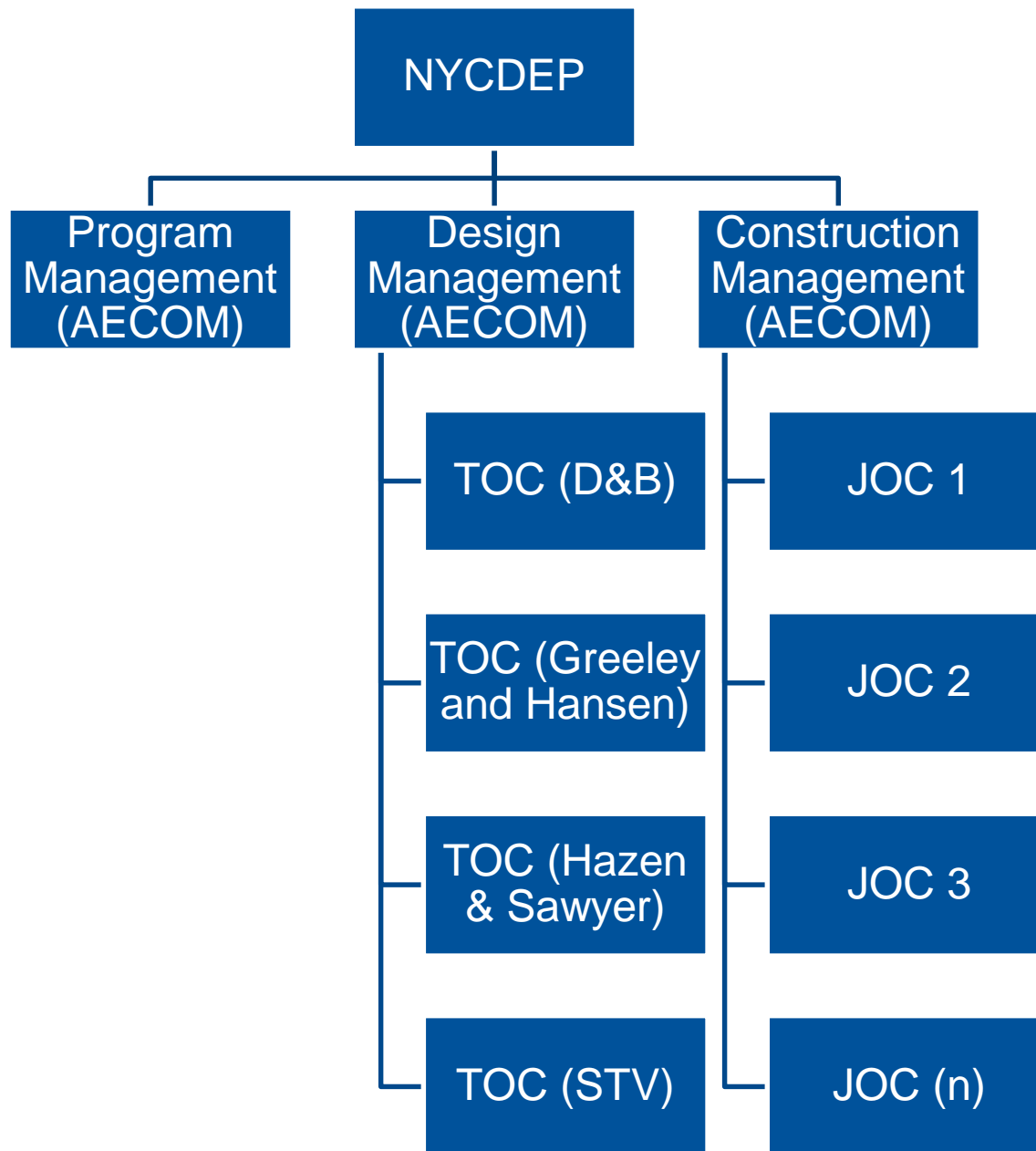


**Above ground  
conduit**

# Program Locations Overview



# Program Structure





## JOC

- Contract for Fixed Term or Maximum Dollar Value
- Bid Adjustment Factors
- Future job orders

## Unit Price Book

- NYC Prices
- Designed around DEP type of work

## Assignments

- Fixed unit prices with Adjustment Factors applied
- Reconciliation on quantities and schedules
- Non-pre-priced items (as applicable)

- 22 Prime Contracts\*\*
  - 8 issued in Round 1
  - 8 issued in Round 2
  - 6 issued in Round 3
- Contract Ranges
  - 9 between \$600K and \$7M
  - 13 between \$15M and \$30M
- M / WBE 30% goal

*\*\*These contracts will be subject to the 2015 DEP Renovation & Rehabilitation PLA*

- **Project Labor Agreement (PLA)**
  - An agreement by an owner (here, the City) with construction trades that all bidders must agree to as part of a responsive bid.
  - Subcontractors to be used by prime contractors on a City contract with a PLA must also agree to the terms of the PLA to be approved.



- The PLA adjusts labor standards across PLA signatory trades including (but not limited to) holidays, overtime and shift pay
  - Adjustments apply to all trades that signed the PLA –which does not include Operating Engineers
- The PLA Does NOT change the base hourly rate of pay and benefits

- Eight (8) hours at Straight Time for day shift
- Eight (8) common holidays
- Four (4) days by ten (10) hour schedule available
- All overtime Monday to Saturday at 1.5 rate
- Shift work at 1.05 x base rate
- Saturday as 'weather make-up' Day at Straight Time

- Bidders that assent to the PLA need not be signatory to any other union agreement (thus, open shop contractors that don't have union agreements are able to agree and bid)
- Key concept is that all of the provisions in the PLA apply to all contractors and all subcontractors—on those City projects subject to a PLA

- Key concept is that under PLAs, contractors and subcontractors use union labor referred by the PLA signatory building trades (open shop and M/WBE contractors have “bring-along” provisions)
- All benefits for trade workers (including “bring alongs”) will be paid to union benefit funds on a timely basis—where workers are not union members, they are ‘agency shop fee payers’ and will acquire union benefits without becoming union members per se.

- New York City (DSBS) certified M/WBE firms receive specific “bring-along” for contracts under \$1M:
  - For contracts at or below \$500k – 2nd, 4th, 6th, 8th workers per trade
  - For contracts between \$500k and \$999k – 2nd, 5th, 8th workers per trade

- Any person (including M/WBE “bring alongs”) working in a trade capacity under a PLA, whether for the contractor or a subcontractor, that is not a member of the affiliated Building Trades Unions, must be registered with the appropriate PLA signatory union benefit fund [Article 11, Section 2]; and are subject to an agency shop fee [Article 4, Section 6].
- DSBS Certified M/WBE firms that are or become union signatories (to a local that signed the PLA) get to bring all employees for the applicable trade subject to union standards of proficiency

## **Prior to bidding:**

- Carefully review the 2015 DEP Renovation PLA (including Schedule A CBAs relevant to the work you are bidding on) and the current Comptroller's Labor Law Schedule 220
- Know the trade classifications and PLA labor standards that will be employed on the contract
- Take escalation into account when factoring labor wage costs into the bid price