	Department of Design and Construction	SPECIFICATION BULLETIN	SB 25-011
Title: Curbs, Headers, and Slabs			
Prepared: Mohammad Mahmud <small>Digitally signed by Mohammad Mahmud Date: 2025.11.18 13:17:15 -05'00'</small>		Approved: How Sheen Pau, P.E. <small>Digitally signed by How Sheen Pau, P.E. Date: 2025.11.19 08:34:46 -05'00'</small>	
Mohammad Mahmud, P.E. Date Director, Specifications		How Sheen Pau, P.E. Date Associate Commissioner – Infrastructure Design	

APPLICABILITY:

- This Specification Bulletin (SB) is effective for projects advertised on or after 11/25/2025.

SUPERSEDEENCE:

- This SB supersedes the following SBs: **None.**

ATTACHMENTS:

1. *Section 2.12 (4 pages)*

REVISIONS TO THE NEW YORK CITY DEPARTMENT OF TRANSPORTATION STANDARD HIGHWAY SPECIFICATIONS, DATED 5/16/2022:

All references contained below are to the New York City Department of Transportation Standard Highway Specifications, Dated May 16, 2022. Said Standard Specifications are hereby revised as follows:

- a. **Refer** to Section 2.12 – Curbs, Headers, and Slabs
Delete in its entirety Section;
Substitute the revised Section in Attachment 1 (4 pages)

For questions regarding this bulletin, please contact Richard Jones, jonesri@ddc.nyc.gov.

SECTION 2.12 – Curbs, Headers and Slabs, Granite and Bluestone

2.12.1. This section describes Granite and Bluestone Curbs, Headers, and Slabs for streets and highways.

2.12.2. (A) Curbs and headers shall be of the types, corresponding classes, and dimensions shown in the following Table:

TYPES, CLASSES, AND DIMENSIONS OF CURBS AND HEADERS

Type	Description	Class	Length in Feet*		Matched Top Width Inches	Bottom Width Minimum Inches	Depth** Inches	Depth Tolerance Inches
			Straight	Curved				
1	Granite Curb	Class A	4-12	3-8	6	4	16	± 1
2	Granite Curb	Class A	4-12	3-8	5	3	16	± 1
3	Granite Curb	Class B	4-12	3-8	$5 \pm 1/4$	3	16	± 1
4	Granite Curb	Class B	4-12	3-8	$6 \pm 1/4$	4	16	± 1
5	Bluestone Curb	Class A	3-8	3-8	5	3	16	± 1
6	Bluestone Curb	Class B	3-8	3-8	$5 \pm 1/4$	3	16	± 1
7	Granite Header	-----	3-5	---	4	3	12 min.	---
8	Granite Header	-----	3-5	---	6	3	12 min.	---
9	Bluestone Header	-----	3-5	---	4	3	12 min	---

* At least eighty (80%) percent of straight curb shall be furnished in the longest length specified. At least eighty (80%) percent of corner curb shall be furnished in lengths of four (4') feet or greater. At least eighty (80%) percent of transition curb (straight or curved) at corners shall be furnished in lengths of five (5') feet or greater.

**Depth shall be the distance between parallel lines at the top and bottom extremities, normal to the face of the curb or header.

Dimensions of slabs must be as shown in the contract drawings.

(B) Type shall be as specified.

2.12.3. (A) GENERAL REQUIREMENTS

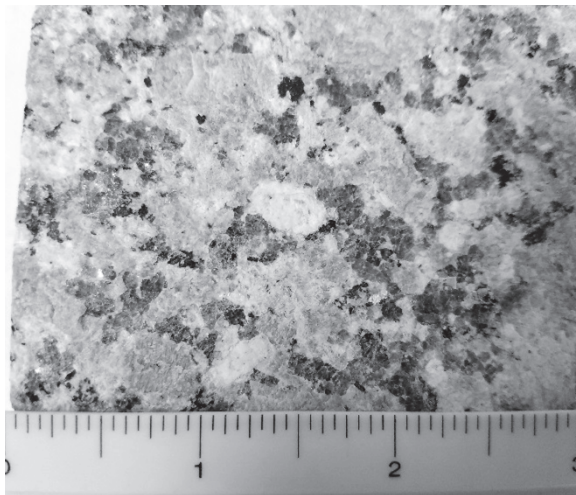
Granite curbs, headers, and slabs must be of medium or coarse grained granite showing an even distribution of constituent minerals. They shall be of uniform quality, color and texture throughout, and free from seams or disintegrated materials. Unless otherwise specified, granite must be medium gray, beige or pink in color. Green granite is not acceptable.

Granite must be from the sources listed in the table below. Alternate similar sources may be submitted to the Engineer for approval.

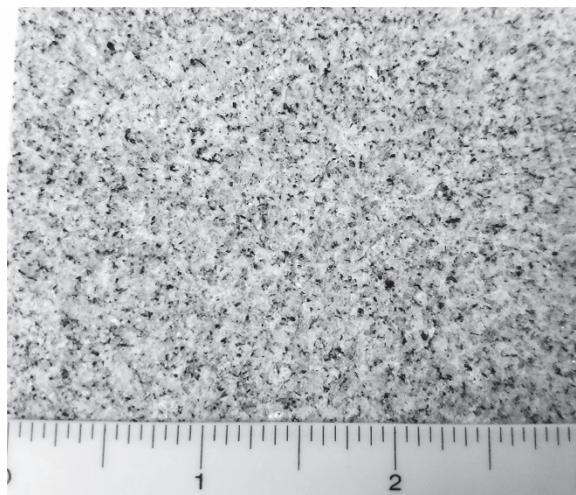
Granite used must be of same color and visually similar to any existing granite curbs, headers, and slabs in the area. Granite used must be from a single supplier for the same job location.

Type	Quarry Location	Supplier
Deer Isle	Crotch Isle, ME	Granites of America 15 Branch Pike, Smithfield, RI 02917 www.granitesofamerica.com
		Structural Stone, LLC 285 Smith Street, Kingstown, RI 02852 https://structuralstonellc.com/
Greene County Granite/Oconee	Greene County, GA	North Carolina Granite Corp. PO Box 151, Mount Airy NC 27030 www.ncgranite.com
Pink Kershaw	Kershaw, SC	Structural Stone, LLC 285 Smith Street, Kingstown, RI 02852 https://structuralstonellc.com/
Caledonia	San Sebastian, QC, Canada	North Carolina Granite Corp. PO Box 151, Mount Airy NC 27030 www.ncgranite.com
Fawn Island	Shang Dao Province, China	Architectural Craft Stone Source 150-28 Union Tpke, Suite 105 Flushing, NY 11367 www.acs-us.net
Rockville White	Rockville, MN	Cold Spring USA 17482 Granite West Rd, Cold Spring MN 56320 www.coldspringusa.com
Iridian	Isle, MN	

See pictures below for examples of acceptable and unacceptable grain:



Acceptable medium granite grain



Unacceptable fine granite grain

Bluestone curbs and headers shall be of tough, sound, durable, fine-grained sandstone or quartzite. They shall be uniform in color, and free from injurious seams and other imperfections.

(B) MECHANICAL PROPERTIES

Mechanical testing will not be required for curbs, headers, and sidewalk slabs.

Slabs subject to vehicular traffic (in roadways or crosswalks) must meet the requirements of ASTM C615, including abrasion resistance.

(C) CUTTING AND DRESSING

Curbs of all types shall not be less than the full box width for at least four (4") inches down from the top. They shall have the top and the front face out of wind. Unless otherwise specified, top of curbs shall be cut to a bevel of one (1) in twelve (12), bottom shall be roughly parallel to the top. Curbs shall be cut to true radii for corners and curves; top ends adjacent to driveways shall be rounded or splayed, as specified; curbs adjacent to receiving basins or other structures shall be cut to special shapes, as specified.

Curbs of all types shall have the top sawed and dressed with a bush hammered or thermal finish, as specified, with no drill holes, and with no projections or depressions greater than one-eighth (1/8") inch as measured from a straight edge along the length of the stone.

Back shall be dressed squared to the top for a depth of not less than one (1") inch. Below that point the back face may have the natural quarry face, with no projections greater than one-half (1/2") inch and no depressions greater than one (1") inch down to a point four (4") inches below the top, and with depressions or projections not greater than one and one-half (1-1/2") inches for the remaining depth.

Ends shall be dressed radially for curved curbs, and dressed squared to the top and face for straight curbs.

Granite and bluestone curb of Class A shall have the front face sawed and dressed like the top for a depth of ten (10") inches below the top. The remaining depth shall have no projections or depressions greater than one and one-half (1-1/2") inches.

Ends of Class A granite and bluestone curb shall be cut square down for their full width to a line at least four (4") inches below the top and for six (6") inches below this line, one (1") inch in from the front face of the stone, to give a joint not greater than one-quarter (1/4") inch. The remaining end area shall have no slackness greater than one (1") inch and no projections.

Granite curb of Class A shall have the top front edge dressed to a one (1") inch radius or to a well-defined arris, as specified, and the top back edge dressed to a well-defined arris. Bluestone curb of Class A shall have top front and top back edges pitched true to well-defined arrises.

NY Historical granite curb and bluestone curb of Class B shall have the front face quarry split. For a distance of ten (10") inches below the top, the front face shall have no drill holes and shall have all projections greater than one-half (1/2") inch pointed off.

Ends of NY Historical granite curb and bluestone curb shall be cut square down for their full width to a line at least ten (10") inches below the top. The remaining end area may break back not over eight (8") inches and have no projections greater than the length of curb, to give a joint not greater than one-quarter (1/4") inch.

NY Historical granite curb of Class B shall have the top front edge dressed to a one (1") inch radius or to a well-defined arris, as specified, and the top back edge dressed to a well-defined arris. Bluestone curb of Class B shall have top front and top back edges pitched true to well-defined arrises.

Granite headers shall be dressed or sawn on top to a surface free from irregularities greater than one-quarter (1/4") inch and free from drill holes.

Bluestone headers shall be dressed on top to a surface free from irregularities greater than three-eighths (3/8") inch and free from drill holes.

Granite and bluestone headers shall have the sides quarry split or sawn. For a distance of six (6") inches below the top they shall be not less than the full box width, with no projections on the sides greater than three-quarters (3/4") inch. Sides of bluestone headers shall be free from bunches.

Granite and bluestone headers shall have the ends cut square down to give a joint not greater than one-quarter (1/4") inch for their full width for a depth of at least four (4") inches below the top. The remaining

end area shall be pitched off to have no slackness greater than one (1") inch. Both top edges shall be pitched true to well-defined arrises.

Slabs must be cut and dressed as shown on the contract drawings, or as described above for headers.