



Department of
Design and
Construction

OFFICE OF
COMMUNITY OUTREACH
AND NOTIFICATION

Plazas

Creating
vibrant public
spaces around
the city

nyc.gov/ddc



NEW YORK CITY has dozens of public plazas for residents and visitors to use and enjoy. The NYC Department of Design and Construction builds and revitalizes these spaces, working in partnership with the NYC Department of Transportation. We create new plazas, sometimes converting existing streets and sidewalks into vibrant public spaces. We also upgrade informal gathering spaces into enduring plazas. Our City's goal is to make more public space available and accessible to everyone.

Pershing Square,
Manhattan

Creating a New Plaza

THROUGH THE NYC Plaza Program, community and business organizations can approach the NYC Department of Transportation with an application for a new plaza site. Applications are competitive and neighborhoods without open space are prioritized. Local partners, such as a Business Improvement District, are required for plazas because someone will need to maintain the space.



IF THE PLAZA is approved, community workshops are held to gather local input. The NYC Department of Design and Construction, working with professional architects and engineers, ensures the plaza will meet long-term needs, conform to all regulations, and be appropriately accessible.

*Left: Forsyth Plaza, Manhattan
Below: Elected officials visit a construction site, Queens*

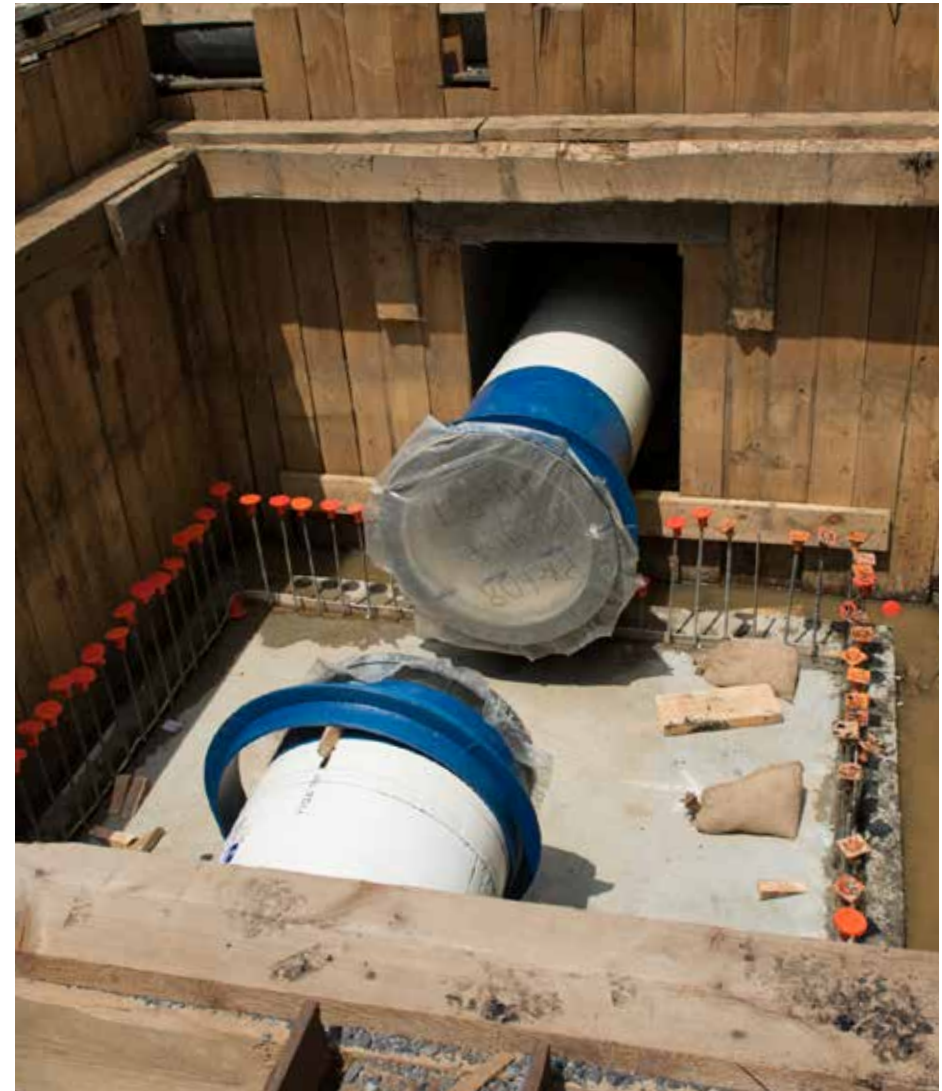


WE PREPARE for construction by obtaining permits, protecting existing trees, installing fencing, relocating interfering utilities, developing a safety plan, and more. Community construction liaisons speak directly with the public and distribute project notices during construction.



WATER MAINS and sewers below the plaza may be relocated, so that essential infrastructure can be reached if repairs are necessary. We may install new catch basins and rain gardens to manage stormwater and reduce street flooding. We also may install the underground system needed for a public drinking fountain.

Left:
Construction
site preparation
Dumbo, Brooklyn
Below: Water
main installation,
Manhattan



CONSTRUCTION CONTINUES

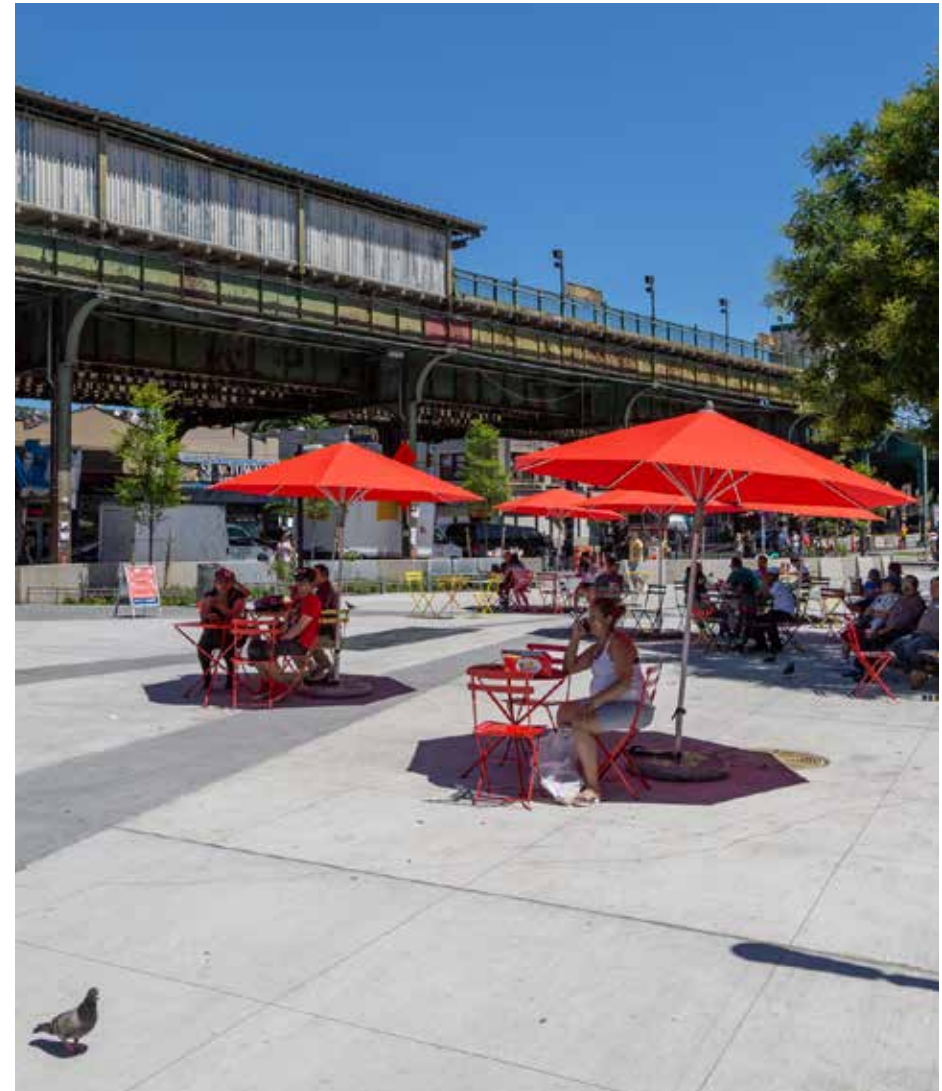
with new sidewalks, pavement, trash cans, bus shelters, seating, wayfinding signage, bicycle racks, and lighting. New trees, shrubs, and grasses are planted to provide shade and greenery. Many plazas include a space for events and some incorporate public art.

Right: Corona Plaza, Queens
Below: Clivner=Field Plaza, Manhattan



NEW DURABLE FURNITURE

will serve the community for years. Most plazas also have moveable furniture, including chairs, tables, and umbrellas. The partner organization, often the local Business Improvement District, is responsible for setting these up each day for public use.



Each NYC plaza is different and designed to serve local needs, often incorporating custom elements based on community workshops. A plaza might be designed to provide easy access to a subway and bus routes or large enough to host a seasonal farmers market. A plaza may have benches looking out toward the waterfront or a large sculpture honoring the community's history. Whatever the particular design, each is meant to be a unique gathering space that will endure for decades.

*Right: Times Square, Manhattan
Below: Frederick Douglass Circle, Manhattan*



The NYC Department of Design and Construction (DDC) is the City's chief construction manager, providing professional project management and world-class design services to more than 20 City agencies and non-profit organizations that receive City funding. The agency builds infrastructure such as water mains, sewers, and public plazas, and public buildings such as libraries and firehouses.

For more information about the NYC Department of Transportation, including application guidelines for the NYC Plaza Program, visit nyc.gov/dot

To learn more about the work of the NYC Department of Design and Construction, visit nyc.gov/ddc

Putnam Triangle,
Brooklyn