

Roy Wilkins Rec Center

Pre-Solicitation Conference



Housekeeping



- Attendance will be taken using the Microsoft Form link provided in the WebEx chat. Please take the time to complete the form. This attendance sheet will be posted on our DDC website.
- Please stay muted and keep your camera off.
- Please hold all questions to the end of the presentation to assist our team with monitoring and consolidating duplicate questions. Questions will be accepted in writing via the "chat" function.

AGENDA

1. Welcome & Introduction
2. DDC Design Build Program Overview
3. The Roy Wilkins Community and Legacy
4. Project Teaming - RFEI
5. Parks Department Design Manual
6. Procurement Lookahead
7. Q&A

AGENDA

1. **Welcome & Introduction**
*Lea Mapp, Chief M/WBE Compliance Officer/
Magalie D. Austin, Executive Deputy Commissioner/
Ding Xi Zheng (Steven), M/WBE Compliance Analyst*
2. DDC Design Build Program Overview
3. The Roy Wilkins Community and Legacy
4. Project Teaming - RFEI
5. Parks Department Design Manual
6. Procurement Lookahead
7. Q&A

Minority & Women-Owned Business Enterprises:



PARTICIPATION REQUIREMENTS

Design-Build Legislation

The legislation that authorizes DDC to use Design-Build as a capital project delivery method provides additional tools or opportunities to engage the M/WBE community in City capital projects.

- As a result of this newly found flexibility, DDC now requires all Design Build teams to submit an “M/WBE Program Experience Form” prior to solicitation at the RFQ stage.
- M/WBE Participation goals on the Design and Construction phases will be disaggregated as follows:
 - 10% Black American
 - 10% Hispanic American
 - 10% Unspecified
- Firms will **not** be allowed to submit pre-proposal and pre-award waivers
- The Office of Diversity and Industry Relations will monitor performance against M/WBE goals throughout the life of the project. We will work closely with the design-builder to make sure that they meet the goals.

Minority & Women-Owned Business Enterprises:

PARTICIPATION REQUIREMENTS



In order to facilitate meeting targets while maintaining a robust vendor pool, the Design-Build Program:

- Allows for the use of **state-certified M/WBEs** in addition to city-certified M/WBEs
- **Eliminates any tier restrictions** on eligible M/WBE participation
- **Counts suppliers** at 60% of the subcontract value

Minority & Women-Owned Business Enterprises:

PARTICIPATION REQUIREMENTS



M/WBE Requirement can be achieved by:

1. M/WBE Prime Vendor
2. Qualified M/WBE Joint Venture
3. M/WBE Subcontractor(s)

New York City Department of Small Business Service certified M/WBE firms listed at: <https://sbsconnect.nyc.gov/certification-directory-search/>

New York State certified MWBE firms listed at: <https://ny.newnycontracts.com//>

AGENDA

1. Welcome & Introduction
2. **DDC Design Build Program Overview**
*Jade Bailey, P.E., PMP, Director,
Alternative Delivery*
3. The Roy Wilkins Community and Legacy
4. Project Teaming - RFEI
5. Parks Department Design Manual
6. Procurement Lookahead
7. Q&A



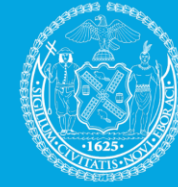
DDC's Design-Build Program

	#Design-Build Projects
Infrastructure	5
Public Buildings	7
Borough-Based Jails	9
	21

DDC's 2022 Progress Report can be found on our Design Build page, here:

<https://www1.nyc.gov/site/ddc/contracts/designbuild.page>

City of New York



Design-Build Program
2022 Progress Report
to the New York
State Legislature

DDC Design-Build

Borough Based Jails Portfolio



9 Design-Build Projects across 4 Project Sites

Facilities Dismantling and Site Prep, including construction of swing space & garage

- 5 Early Works Projects awarded, \$43M – 125M+, totaling \$400M
- Multi-level garage with community space in Queens – DDC's first completed DB project, delivered in half the time of a DBB project

New Facilities in Manhattan, Brooklyn, Queens & the Bronx, focusing on reentry service

- 4 New Facilities in procurement, each with \$1.5B – 1.8B estimated contract value, totaling \$8B+

DDC Design-Build Infrastructure DB Portfolio



- 5 Pilot Projects | \$12.5M – 90M
- First 3 NTPs anticipated Summer/Fall 2023 for pilot projects
- 2 projects \$50M to \$100M RFQ to be released in 2023
- **Lexington Avenue Pedestrian Safety**
- **Pedestrian Ramps in MN, QN & BX**
- **ROW Green Infrastructure via Precast Porous Concrete Panels**
- **Raised Crosswalk**
- **Deep Sewer Manhole**

DDC Design-Build

Public Buildings DB Portfolio



- 7 Projects | \$15M – 130M+
 - 6 NTPs with projects in Design
 - 1 projects pending Contract Registration (this week!)
 - Several others in Pipeline
- **Orchard Beach and Rockaway Beach M&Os**
 - **Marlboro Greenhouse**
 - **Shirley Chisholm and Mary Cali Dalton Rec Centers**
 - **Brownsville Girls Empowerment Center & Community Hub**
 - **Harper St. Admin Facility**

Our Next Public Buildings Project

Roy Wilkins Recreation Center



Objective: Create a world-class recreation facility for the Department of Parks and Recreation (NYC Parks)

- Embed equity in design, construction and work opportunities
- Meaningful M/WBE and small business participation is a DDC priority and will be reflected in the procurement process

AGENDA

1. Welcome & Introduction
2. DDC Design Build Program Overview
3. **The Roy Wilkins Community and Legacy**
Enid De Gracia, Deputy Director,
Front End Planning
4. Project Teaming - RFEI
5. Parks Department Design Manual
6. Procurement Lookahead
7. Q&A

Roy Wilkins Recreation Center



Roy Wilkins Park

Neighborhood Context – Walking Radius



- Cricket Fields
- Fitness Equipment
- Handball Courts
- Playgrounds
- Spray Showers
- Tennis Courts
- Comfort Station

- Barbecuing Areas
- Baseball Fields
- Basketball Courts
- Comfort Station
- Bicycling and Greenways
- Cricket Fields
- Dog-friendly Areas
- Fishing
- Fitness
- Equipment
- Football Fields
- Handball Courts
- Playgrounds
- Running Tracks
- Soccer Fields
- Spray Showers
- Tennis Courts
- Wi-Fi Hot Spots



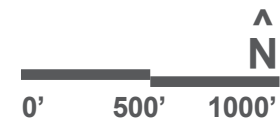
NYC Parks



- AMENITIES:**
- Baseball Fields
 - Basketball Courts
 - Comfort Station
 - Cricket Fields
 - Fitness Equipment
 - Handball Courts
 - Indoor Pools
 - Playgrounds
 - Recreation Centers
 - Running Tracks
 - Spray Showers
 - Tennis Courts
 - Wi-Fi Hot Spots

- Comfort Station
- Handball Courts
- Playgrounds
- Spray Showers

Wifi Hotspots



Neighborhood Context



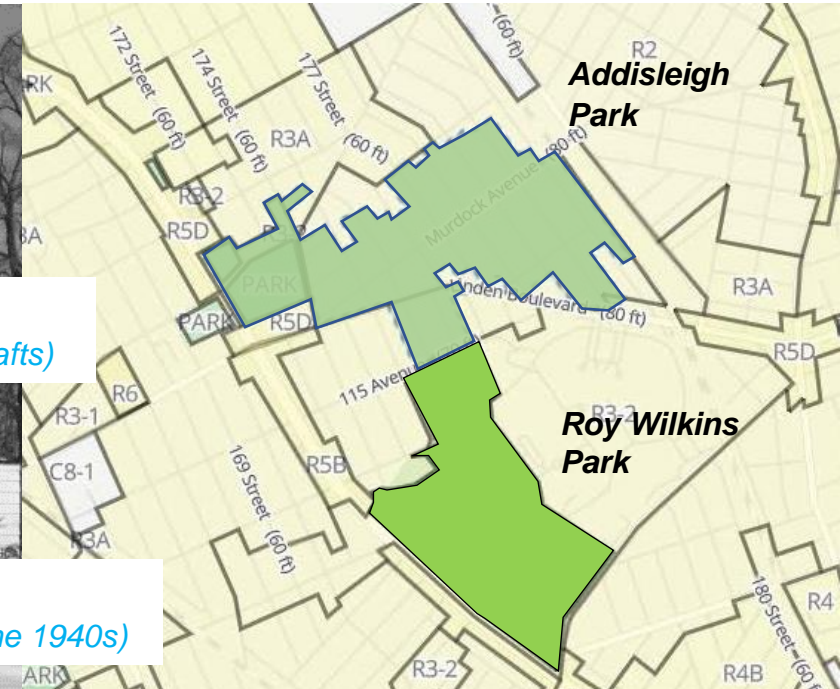
St. Albans, Queens

Addisleigh Park
(Designated a Historic District in 2011)

Buildings built between 1910 -1930
(Architecture - Tudor & Colonial Revival, and Arts and Crafts)

Restrictive Covenants
(Prohibited home sales to non-whites until 1948)

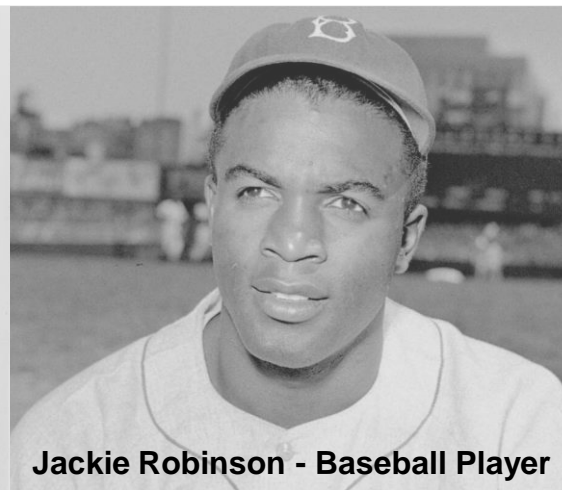
Residents
(Attracted middle-class and prominent African-Americans by the 1940s)



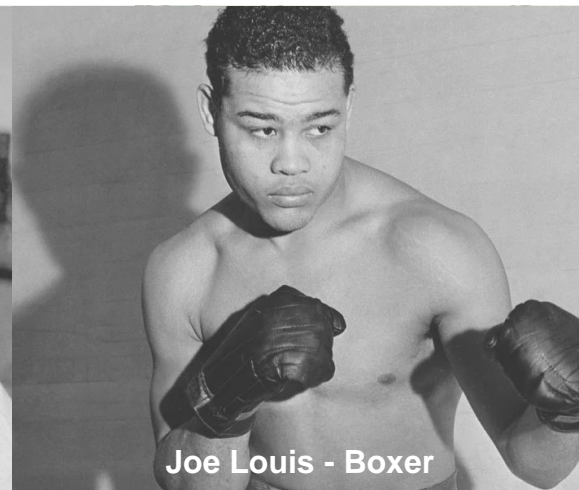
Lena Horne – Actress/Singer



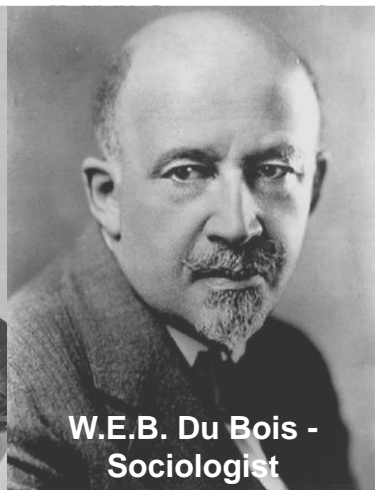
Ella Fitzgerald – Singer



Jackie Robinson - Baseball Player

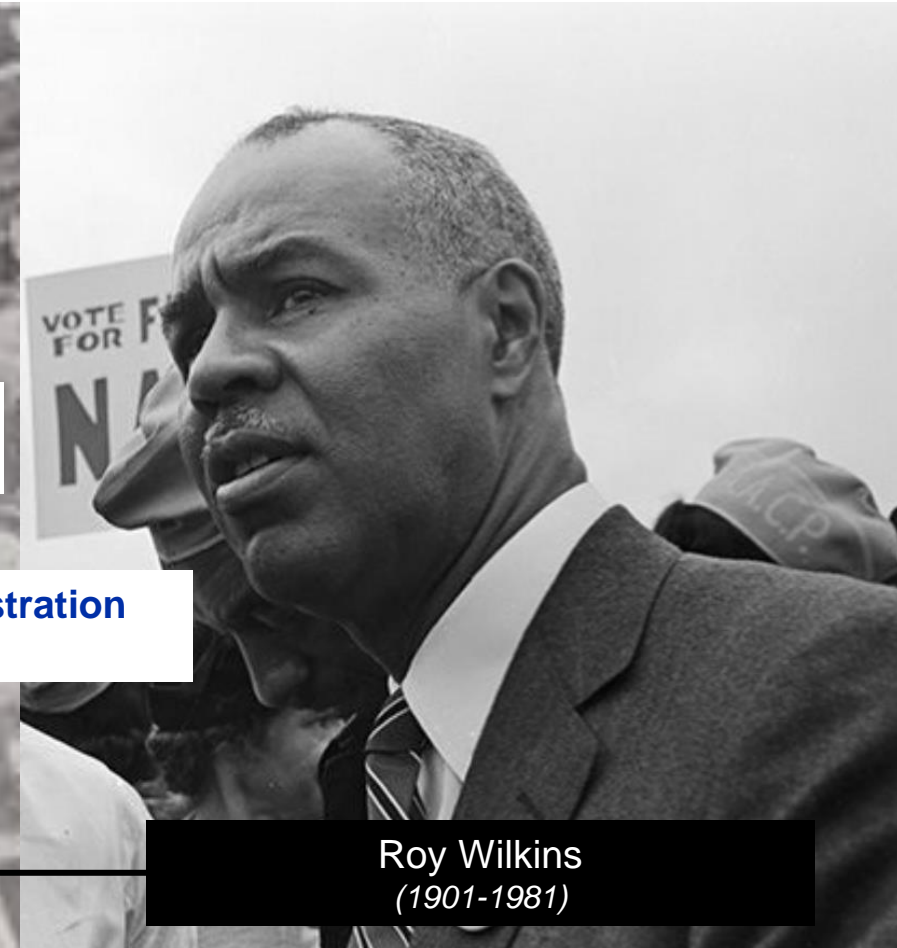


Joe Louis - Boxer



W.E.B. Du Bois - Sociologist

Existing Roy Wilkins Recreation Center



Park Development
(1982)

Roy Wilkins
(1901-1981)

Roy Wilkins Family Center

- Park named after Roy Wilkins
- In 1986 the 50,000sf Hospital was converted into Roy Wilkins Family Center

Civil Rights Leader

- 1931 began career with NAACP
- NAACP President (1955-1977)
- Promoted legislation for fair housing laws, and equity in wages

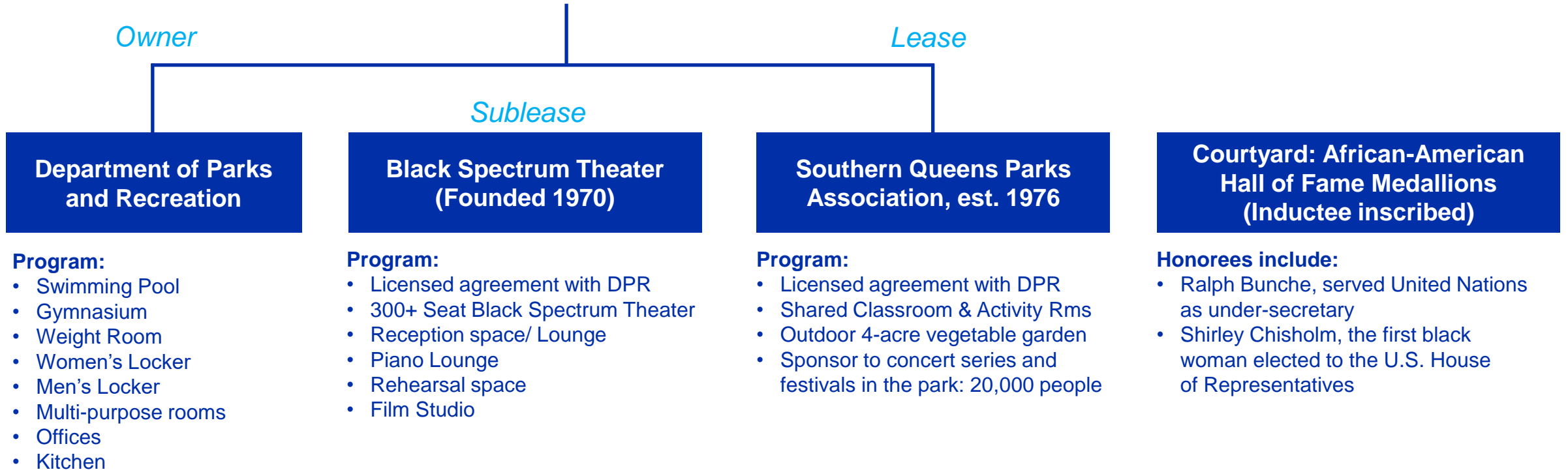
Existing Roy Wilkins Recreation Center



Existing Roy Wilkins Recreation Center



Existing Recreation Center to Remain



Existing Building Conditions

- ADA non-compliant
- Roof leaks
- Mechanical issues
- Plumbing backups related to storm events
- Triple duplex sump pump system – addressing ground water infiltration at cellar

New Facility Roy Wilkins Recreation Center



New Facility – Site Conditions

Additional Program

- Swimming Pool
- Gymnasium
- Running Track
- Weight Rooms
- Fitness Rooms
- Men/Women's Lockers
- Multi-purpose room
- Administration
- Support Space

Building Orientation

- High visibility from main street/
Convenient access to new
Rec Center
- Concerts & Festivals / Importance
of maintaining open field
- Reduce impact to existing trees
- New Rec Center located on
higher ground

Site Conditions

- Site located in a MS4 District
(municipal separate storm
sewer system is required)
- On-site high water table/
Build on-grade/ no basement

LEED

- Geothermal system
consideration
- NYC energy and local codes
- Fully electrified building



AGENDA

1. Welcome & Introduction
2. DDC Design Build Program Overview
3. The Roy Wilkins Community and Legacy
- 4. Project Teaming – RFEI**
Alison Landry, Associate Commissioner
Alternative Delivery
5. Parks Department Design Manual
6. Procurement Lookahead
7. Q&A

DDC's Recent RFEI

Roy Wilkins Recreation Center, Teaming Intentions



The screenshot shows the NYC Department of Design and Construction (DDC) website. The header includes the NYC logo, the text 'Department of Design and Construction', and a search bar. Below the header is a navigation menu with 'About', 'Contracts', 'Projects', 'MWBE', 'STEAM', 'Resources', and 'Careers'. A blue banner contains buttons for 'Work with DDC', 'Bid', 'RFP', 'Design-Build', and 'RFQ / PQL'. The main content area features a search bar with 'SEARCH' and 'RESET' buttons, a 'Sign In' button, and a link to 'Register for DDC Anywhere'. A dropdown menu on the left lists 'Current Opportunities', with 'NYCDB - PB RFEI - Public Building RFEI for Roy Wilkins Project' selected. Below this, there are two buttons: 'CLICK HERE FOR LIST OF INTERESTED SUBS/SUPPLIERS' and 'CLICK HERE TO OPEN INTERESTED SUB/SUPPLIER ENTRY FORM'. A blue arrow points from the right towards the second button. A 'Notice' section at the bottom lists 'RFEI for Roy Wilkins Project - Last Updated: 3/30/2023'.

- RFEI Posted 3/30
- RFEI Responses Due 5/5
- Vendors Encouraged to Utilize Live Links for Entry Form and Interested Subs List

DDC's Recent RFEI

Roy Wilkins Recreation Center, Teaming Intentions

- DDC strongly encourages all interested Vendors to respond to the RFEI
- Responding to the RFEI is not required for future procurement participation
- Opportunity to publicize your firm's interest in this project, and increase teaming potential

DDC's Recent RFEI

Roy Wilkins Recreation Center, Teaming Intentions

RFEI responses provide the opportunity to give feedback to DDC:

- Procurement approach and structure
- MWBE approach
- Design-Build approach
- Community Outreach

DDC's Recent RFEI

Roy Wilkins Recreation Center, Teaming Intentions



NYC Parks Recreation Center Design Manual

- 6) The NYC Parks Recreation Center Design Manual collects technical information on the design, construction, and operations of similar facilities to provide teams with current goals, preferences, priorities, and lessons learned from prior projects. This document is available [here](#), and will be included as part of the RFP. Given that proposers will have access to this level of information in addition to the Specific Project Requirements, does Respondent have any suggestions about structuring the procurement and the ability of teams to develop refined design solutions during the procurement phase?

AGENDA

1. Welcome & Introduction
2. DDC Design Build Program Overview
3. The Roy Wilkins Community and Legacy
4. Project Teaming – RFEI
- 5. Parks Department Design Manual**
Jenny Gillette, RA, Technical Director,
Alternative Delivery
6. Procurement Lookahead
7. Q&A

NYC Parks Recreation Center Design Manual



- Available via link in this RFEI and on the DDC website under “Publications”
- Will be used to develop the specific project requirements for the Roy Wilkins Rec Center
- Developed with NYC Parks Facilities, Capital Projects, and Public Programs
- Collected lessons learned from the design, construction and operation of recreation centers all over the city

NYC Parks Recreation Center Design Manual



Basis for teams to develop a contextual approach that is responsive to the needs of a specific site, neighborhood, community, and set of uses

Performance-based, to maximize opportunities for flexibility and innovation in the team's approach to design

Not a checklist, not design standards or specifications, but a guide to what has been successful in past centers.

AGENDA

1. Welcome & Introduction
2. DDC Design Build Program Overview
3. The Roy Wilkins Community and Legacy
4. Project Teaming – RFEI
5. Parks Department Design Manual
- 6. Procurement / Lookahead**
*Alison Landry, Associate Commissioner,
Alternative Delivery*
7. Q&A

Roy Wilkins Procurement



Roy Wilkins Recreation Center

55,000 sq. ft. Rec Center for NYC Parks located in Roy Wilkins Park, Queens
DB Budget Approximately \$120M

- Anticipated RFQ Issuance: Summer/Fall 2023
- Anticipated RFP Issuance: Winter 2023/2024
- Estimated Proposals Due: Summer 2024
- Estimated Notice to Proceed to Design-Builder: Fall 2024

Connect with DDC



Current, Upcoming, Future Opportunities

<https://www.nyc.gov/site/ddc/contracts/designbuild.page>

Get Involved:

- Upcoming opportunities – teaming for RFQ / SOQ Response
- Shortlists announced on DDC Website
- Awarded Teams announced on DDC Website, and at DB Forums

2023 Future DDC Events



- **DB Forum, May 2023 – Meet the Teams, Public Buildings**
Brownsville Girls Empowerment Center & Community Hub
Gilbane / Marvel Architects

Harper St. Admin Building and Site Improvements
Scalamandre-Tully / Urbahn Architects / Selldorf Architects
- **DDC Industry Open House - June 8**
In Person Event! 9:30-11:30am – Register via Eventbrite link, up on our website and social media outlets soon
- **DB Forum, Fall 2023 – Meet the Teams, Infrastructure**
Lexington Avenue Pedestrian Safety
Pedestrian Ramps

Thank you!

Design Build and Alternative Delivery at DDC
Current and Past Design Build Opportunities
<https://designbuild.ddcanywhere.nyc/>

Design Build Unit, Public Buildings

Jade Bailey, Jenny Gillette, Sarah Oakes

baileyja@ddc.nyc.gov

gillettje@ddc.nyc.gov

oakessa@ddc.nyc.gov



Department of
Design and
Construction

AGENDA

1. Welcome & Introduction
2. DDC Design Build Program Overview
3. The Roy Wilkins Community and Legacy
4. Project Teaming – RFEI
5. Parks Department Design Manual
6. Procurement / Lookahead
7. Q&A

THANK YOU!

