

BRONX COMMUNITY BOARDS #2,3,4

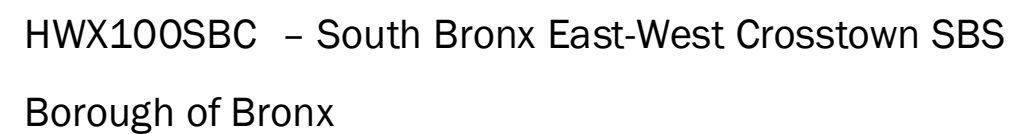
SOUTH BRONX EAST-WEST CROSSTOWN SBS – BRONX/MANHATTAN

**PROJECT ID: HWX100SBC
BOROUGH OF THE BRONX**

Agenda:

- **Project Overview**
- **Project Goals**
- **Project Limits**
- **Typical Maintenance and Protection of Traffic**
- **Community Impacts & Mitigation**
- **Community Outreach**
- **Project Schedule**
- **Q&A**

- Manhattan & Bronx pedestrian safety improvements located in CB9M, CB4X, CB3&2X



3

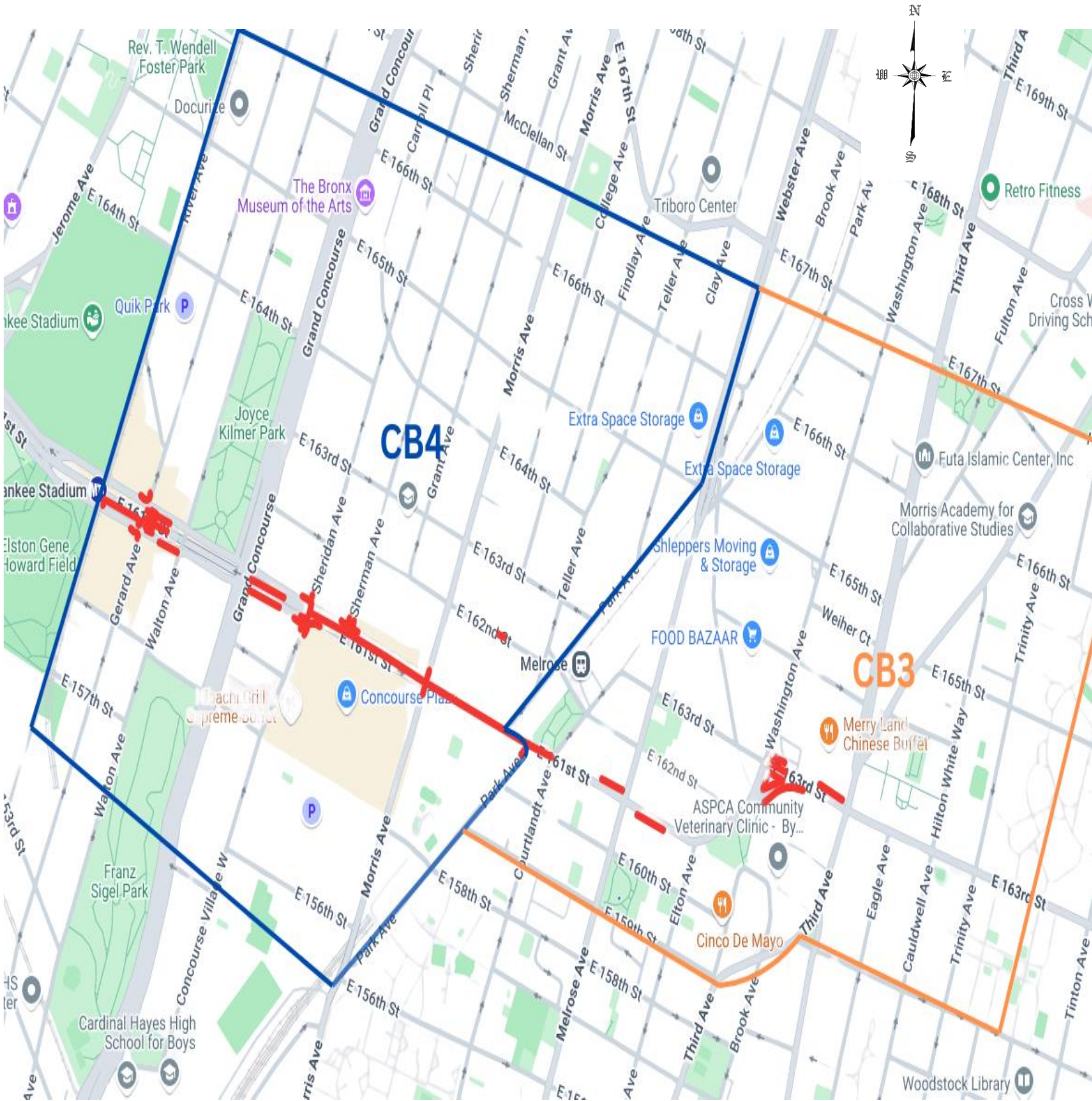
PROJECT GOALS:

- Improve pedestrian safety with the addition of bus pads, bus bulbs, curb and median extensions, and pedestrian refuge islands.
- DOT earlier improvements implemented, and this project is a continuation of pedestrian improvements along the corridor.



PROJECT LIMITS: CB4

- River Avenue and East 161st Street
- East 161st Street between River Avenue and MacCombs Dam Bridge
- East 161st Street between River Avenue and Gerard Avenue
- River Avenue between East 161st Street and East 164th Street
- River Avenue between East 161st Street and East 157th Street
- Intersection of Gerard Avenue and East 161st Street
- Gerard Avenue between East 161st Street and East 164th Street
- Gerard Avenue between East 161st Street and East 158th Street
- East 161st Street between Gerard Avenue and Walton Avenue
- Intersection of Sheridan Avenue and East 161st Street
- Sheridan Avenue between East 161st Street and East 163rd Street
- Sheridan Avenue between East 161st Street and East 159th Street
- East 161st Street between Grand Concourse and Sheridan Avenue
- East 161st between Sheridan Avenue and Sherman Avenue
- Intersection of Sherman Avenue and East 161st Street
- Sherman Avenue between East 161st Street and east 163rd Street
- East 161st street between Sherman Avenue and Morris Avenue
- Intersection of Morris Avenue and East 161st Street
- Morris Avenue between east 161st Street and East 162nd Street
- Morris Avenue between east 161st Street and East 156th Street
- East 161st Street between Morris Avenue and Park Avenue
- Intersection of Park Avenue and East 161st Street
- Park Avenue between East 161st and East 162nd Street



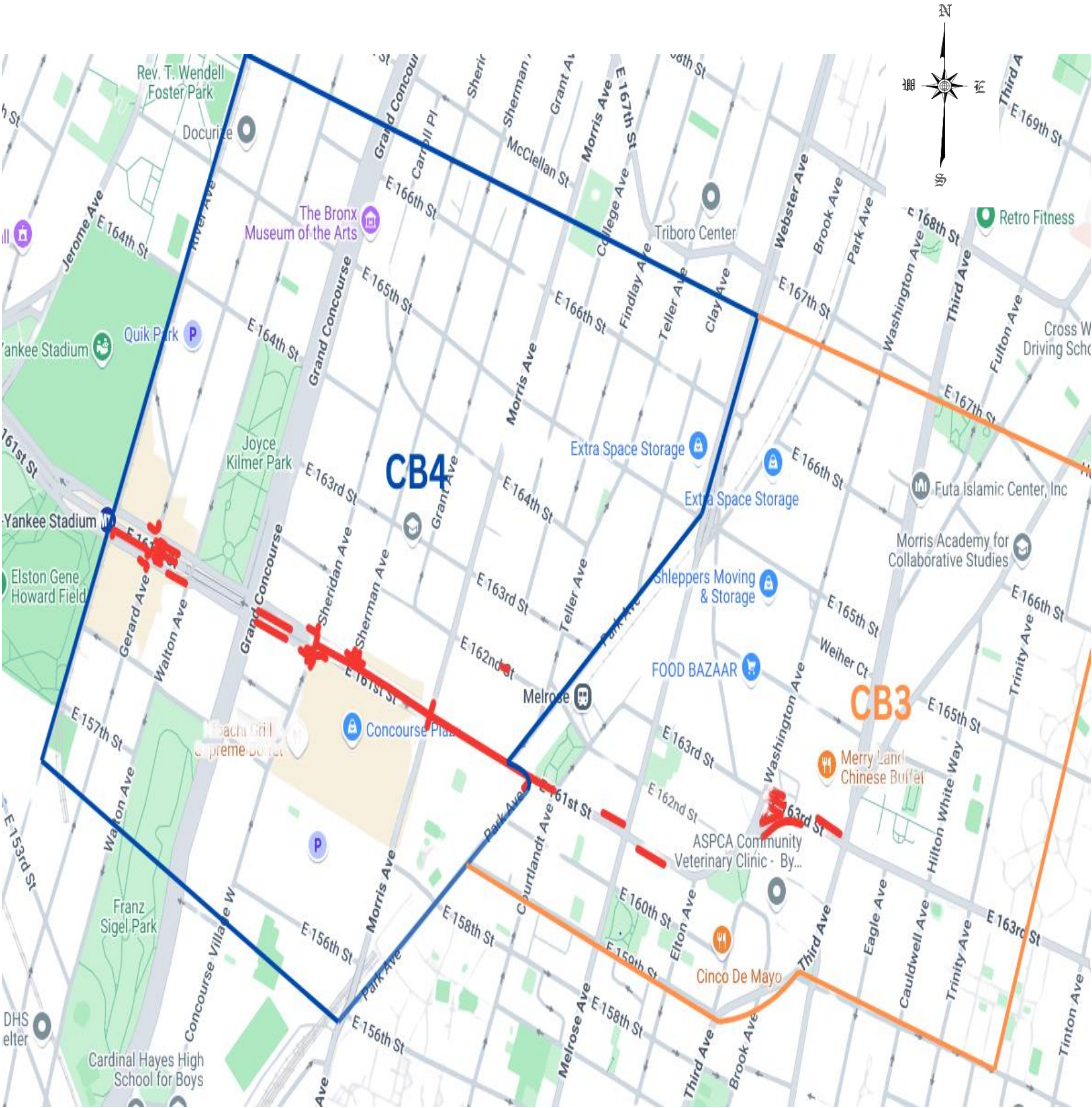
PROJECT LIMITS: XCB4; CB3

CB#4

- Park Avenue between east 161st Street and East 158th Street
- East 161st Street between Park Avenue and Courtlandt Avenue
- East 161st Street between Courtlandt Avenue and Melrose Avenue
- East 161st street between Melrose Avenue and Elton Avenue

CB#3

- Elton Avenue between Washington Avenue and East 163rd St.
- Washington Avenue between Elton Ave and East 163rd Street
- Est 163rd street between Brook Avenue and Washington Ave
- Intersection of Elton Avenue and Washington Avenue
- Intersection of Washington Avenue and East 163rd Street
- East 163rd Street between Washington Ave and Elton Avenue
- Intersection between Elton Avenue and East 163rd Street
- East 163rd Street between Elton Avenue and Third Avenue
- Intersection between Third Avenue and East 163rd Street
- East 163rd Street between Third Avenue and Eagle Avenue
- Third Avenue between east 163rd Street and East 164th Street
- Third Avenue between east 163rd Street and East 162nd Street
- Est 163rd Street between Tinton Avenue and Union Avenue
- Intersection of Union Avenue and East 163rd Street



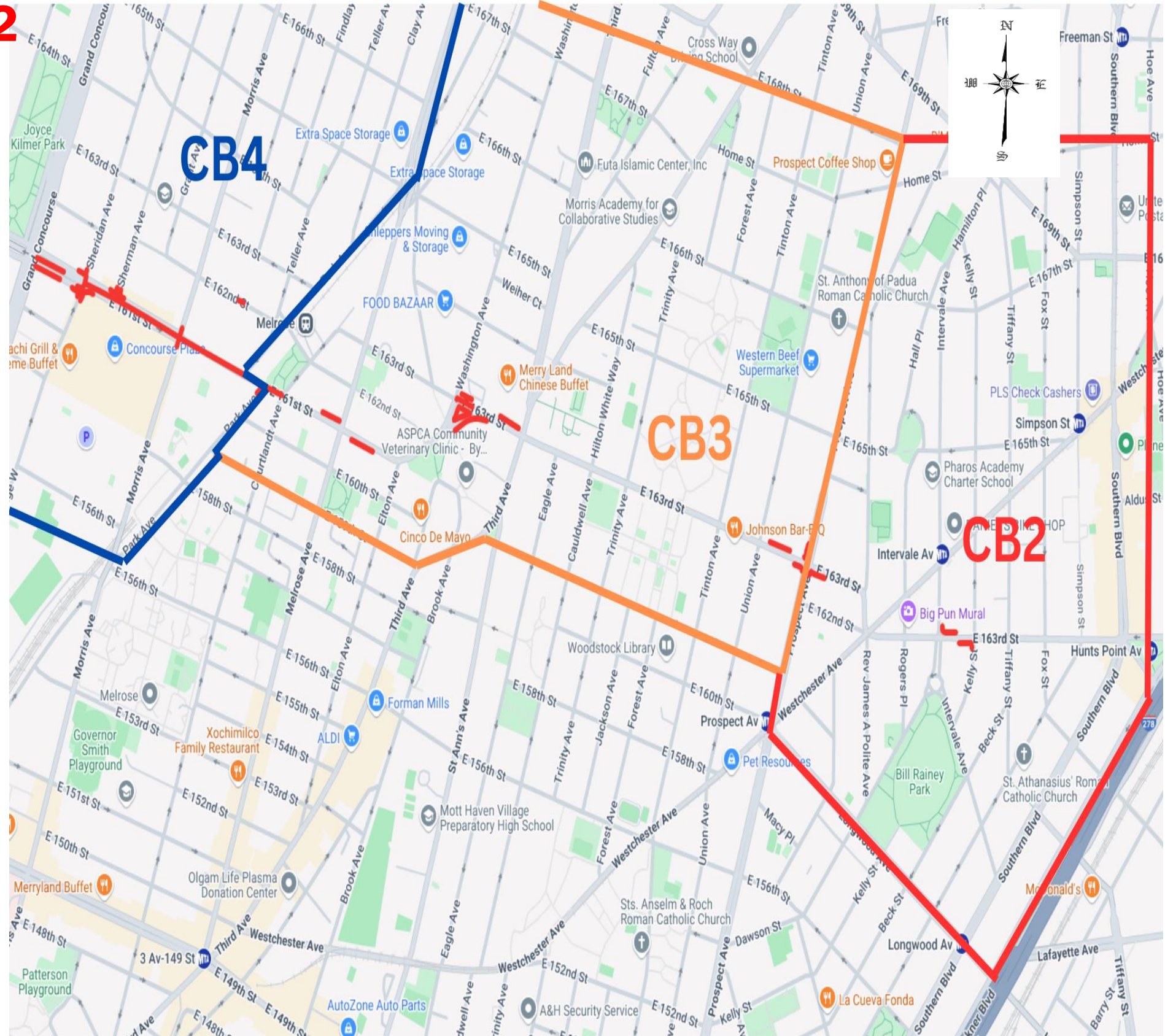
PROJECT LIMITS: XCB3; CB2

CB#3 -

- **East 163rd Street between Union Avenue and Prospect Ave**
- **Union Avenue between East 163rd Street and E. 165th Street**
- **Intersection of Prospect Avenue and East 163rd Street**

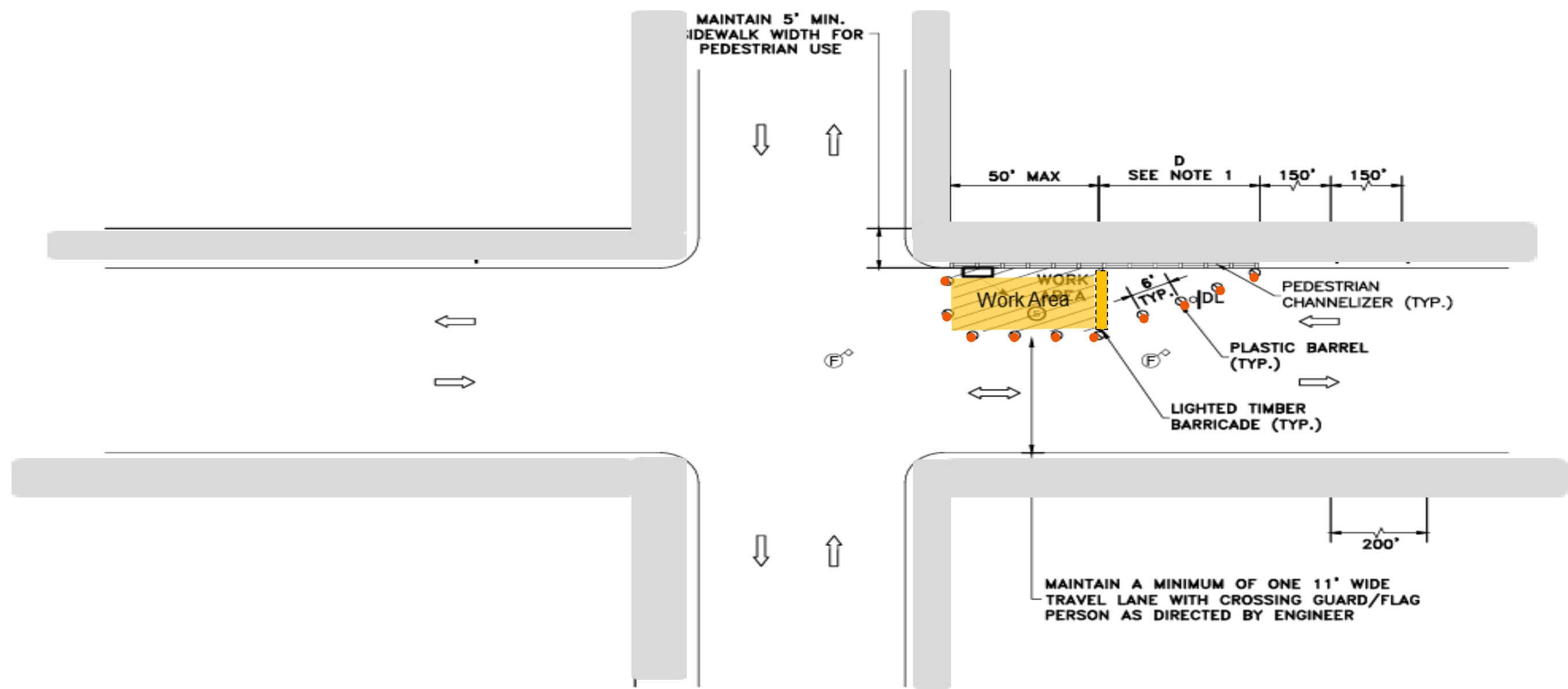
CB2

- Prospect Avenue between East 161st Street and East 165th Street
- Prospect Avenue between East 163rd Street and East 162nd Street
- East 163rd Street between Prospect Avenue and Rev. James A. Polite Avenue
- Intersection of Intervale Avenue and East 163rd Street
- East 163rd Street between Rogers Place and Intervale Avenue
- East 163rd Street between Intervale Avenue and Kelly Street
- Intervale Avenue between East 163rd Street and Westchester avenue
- Intervale Avenue between East 163rd Street and Dawson Street/Kelly Street
- Intersection of Kelly Street and East 163rd Street
- East 163rd Street between Kelly Street and Tiffany street
- Kelly Street between East 163rd Street and Westchester Avenue
- Kelly Street between East 163rd Street and Intervale Avenue



TYPICAL MAINTENANCE AND PROTECTION OF TRAFFIC

(VARY DEPENDING ON WORK OPERATIONS AND LOCATIONS)



CASE I
CATCH BASINS AT CORNERS WITH
MANHOLE WITHIN ROADWAY
N.T.S

MPTs Requires DOT –
OCMC Coordination

TYPICAL MAINTENANCE AND PROTECTION OF TRAFFIC



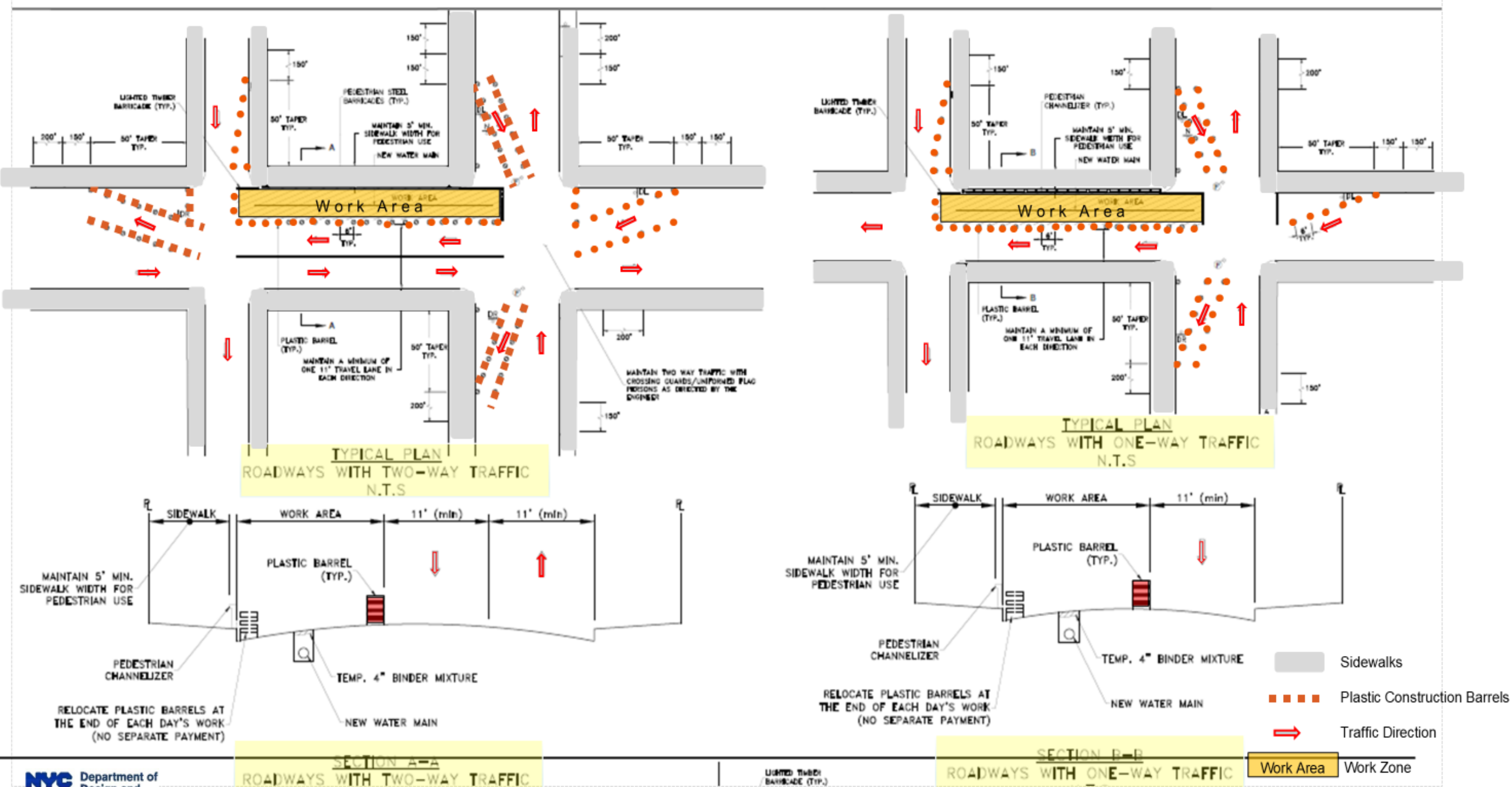
For illustration purposes only

Contract Provisions:

- **Traffic Enforcement Agents (TEAs)** have been approved on this project to maintain traffic flow.
- **GC will provide flaggers** at key points throughout work zones to safely maintain movement construction vehicles.

TYPICAL MAINTENANCE AND PROTECTION OF TRAFFIC

(VARY DEPENDING ON WORK OPERATIONS AND LOCATIONS)



Requires DOT – OCMC Coordination of MPTs

COMMUNITY IMPACTS DURING CONSTRUCTION

- Roadway lane closures, as necessary
- Temporary loss of parking at certain work zones
- Temporary relocation of bus stops
- Scheduled water main service shut-downs
- Weekend hours for construction may be necessary
- Street Vendors/ Dining Out NYC coordination, as needed

COMMUNITY IMPACTS & MITIGATIONS

Contractor shall:

- Work within DEP Noise Code Regulations
- Keep storage site areas clean and safe
- Cover trucks delivering fill material
- Provide professional rodent control inspector to monitor/maintain Rodent Control Station
- Garbage pick-up may be affected and will be coordinated with appropriate stakeholders.

COMMUNITY IMPACTS & MITIGATIONS (cont.)

TRAFFIC PATTERNS

Contractors shall maintain the following:

- Signage and personnel to ensure a safe work site for pedestrians and vehicles
- Maintain pedestrian access to sidewalks, crosswalks and buildings
- Maintain emergency/ through way traffice - one way, in both directions at all times
- Plate and open roadway traffic when site is unattended/ not in use
- Parking and driveway access may be restricted when necessary; coordination is done on a case-by-case basis; signs will be posted in advance of work to avoid towing of vehicles.
- Full roadway closures – intermittent and when necessary

COMMUNITY OUTREACH

- **DDC's Office of Community Outreach + Notification (OCON)** works with CB's, BID's, local businesses, and other community stakeholders impacted by construction.
- DDC will assigned a dedicated on-site Community Construction Liaison (CCL). The CCL information will be provided at the pre-Construction phase:

Email: TBD

Phone: TBD

Field Office Location: TBD

Field Office Hours: 7AM to 3:30PM



DDC Project Lead: Kristen Cawthorn, cawthorkr@ddc.nyc.gov 929.206.1334

COMMUNITY OUTREACH (continued)

Community Construction Liaison (CCL) responsibilities are as follows:

- First point of contact, maintain on-site presence and communications.
- Identify, resolve, and/or proactively address issues and inquiries.
- Distribute advisories and weekly construction activities newsletter.
- Provide 72-hour and 24-hour (confirmation or cancellation) advisories for work impacts by email and door to door.
- Attend community board monthly DSC meetings and other community meetings as necessary, to keep the community informed of the project schedule and impacts.

COMMUNITY CONSTRUCTION LIAISON INVOLVEMENT

Keeping You Informed.

The on-site CCL works directly with the project team. CCL will address community concerns, respond to inquiries, attend meetings, as needed, as well as distribute project related materials to keep the community informed and notified.

PROJECT
INFORMATION
CARD (PIC)



ADVISORIES



WEEKLY LOOK AHEAD BULLETIN

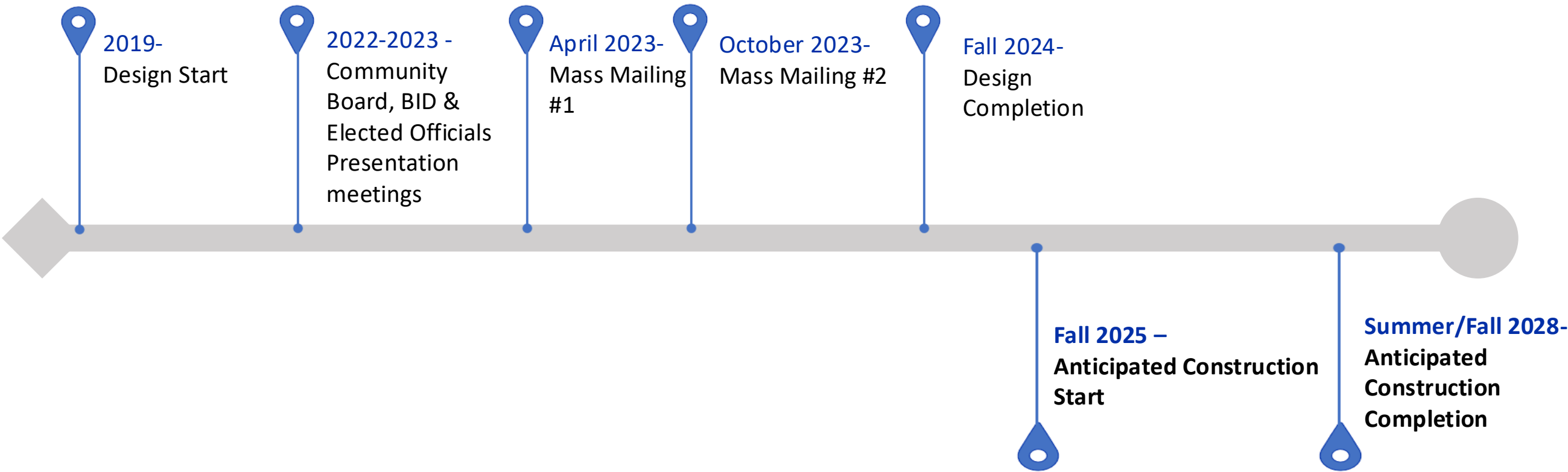


QUARTERLY
NEWSLETTERS



PROJECT SCHEDULE

- **Design Completion - September 2024**
Bid Date- February 27th, 2025
- **Construction Start - Fall 2025**
- **Anticipated Construction Completion – Summer/Fall 2028**



THANK YOU

Q&A