

# COMMUNITY BOARD 5

---

## LEXINGTON AVENUE PEDESTRIAN SAFETY IMPROVEMENTS

LEXINGTON AVENUE / 41<sup>ST</sup> STREET / 45<sup>TH</sup> STREET TO 49<sup>TH</sup> STREET  
49<sup>TH</sup> STREET / LEXINGTON AVENUE TO 3<sup>RD</sup> AVENUE

PROJECT ID: HWMMLEXAV  
BOROUGH OF MANHATTAN

---

# CONTENTS

DESIGN BUILD CORE PROJECT TEAM

PROJECT LOCATION

PROJECT BACKGROUND

PROJECT INTENT AND GOALS

EXISTING CONDITIONS

PROPOSED IMPROVEMENTS

COMMUNITY IMPACTS DURING CONSTRUCTION

COMMUNITY ENGAGEMENT

ENVISION

PROJECT SCHEDULE

PROJECT MILESTONES



# Design Build: Core Project Team

Design-Build Team



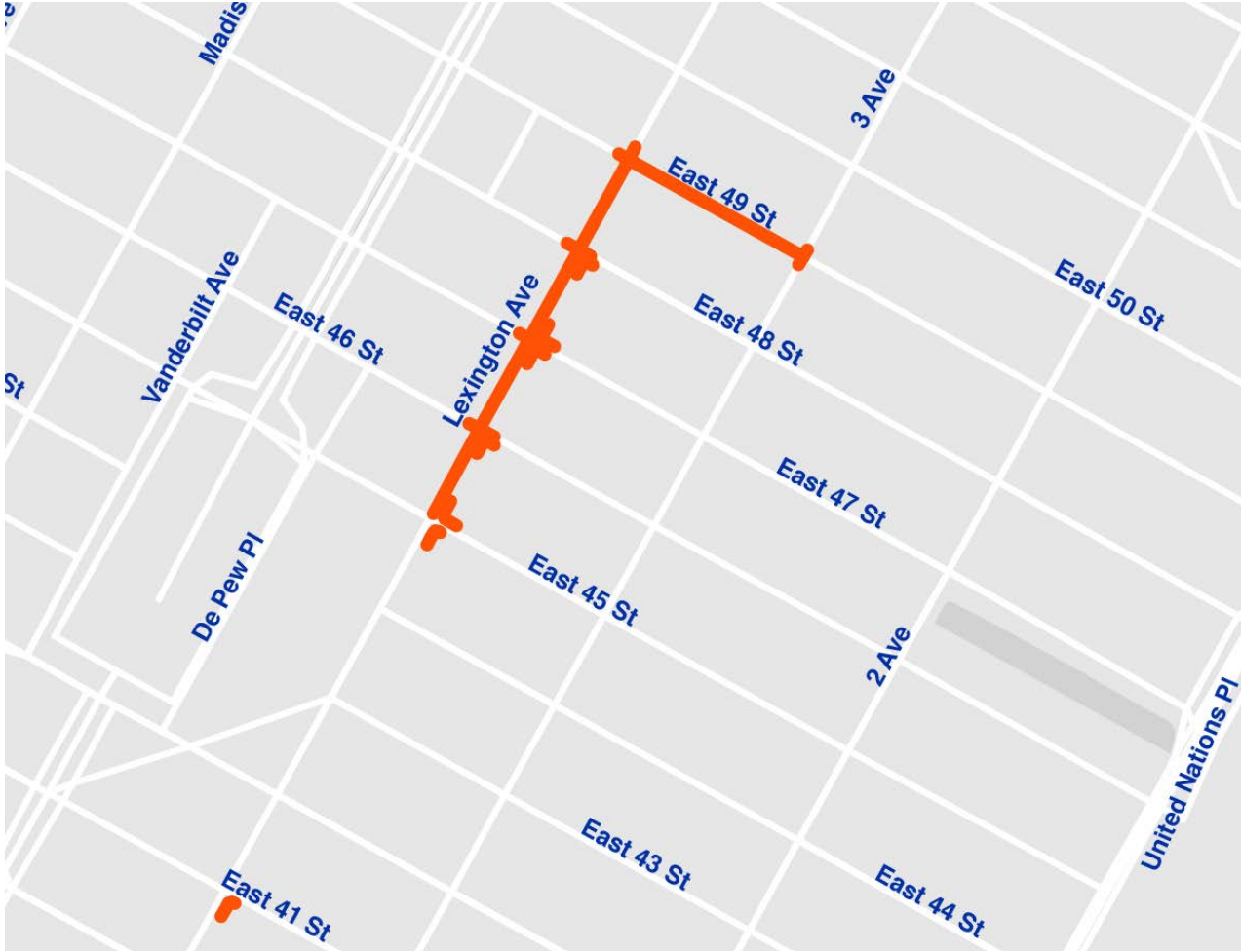
Managing Agency



Sponsors



# PROJECT LOCATION



## PROJECT LOCATION:

### Lexington Avenue:

At 41<sup>st</sup> Street

45<sup>th</sup> Street to 49<sup>th</sup> Street

### 49<sup>th</sup> Street:

Lexington Avenue To 3<sup>rd</sup> Avenue

# PROJECT BACKGROUND

- Location was identified and funded as part of the Greater East Midtown Rezoning.
- Public Realm Vision Plan identified the east side of Lexington Ave for curb extensions.
- In-house 2021 DOT project installed extensions in temporary materials, along with sidewalk widening on west side of the avenue.
- Due to complexities with the Grand Central Terminal Train Shed, the west side sidewalk widening is not included in this project.



# PROJECT INTENT & GOALS

## Project Street Elements (Package 3 – FLATWORK)

- A. Curb Extensions
- B. Pedestrian Ramp Upgrades
- C. Incidental Sewer / Drainage Work
- D. Traffic Signals/Street Light Re-locations
- E. Accessible Pedestrian Signals (APS) Upgrades
- F. Wayfinding Signage
- G. Pavement Markings
- H. Incidental Coordination with CitiBike, Street Furniture, LinkNYC, etc.



#	Intersection	Corner	Type	Street Crossing
1	Lexington Avenue & East 41st Street	Southeast	Half	Lexington Avenue
2	Lexington Avenue & East 45th Street	Southeast	Half	Lexington Avenue
3	Lexington Avenue & East 45th Street	Northeast	Full	Both Lexington & East 45th St
4	Lexington Avenue & East 46th Street	Southeast	Full	Both Lexington & East 46th St
5	Lexington Avenue & East 47th Street	Southeast	Half	Lexington Avenue
6	Lexington Avenue & East 47th Street	Northeast	Full	Both Lexington & East 47th St
7	Lexington Avenue & East 48th Street	Southeast	Half	Lexington Avenue

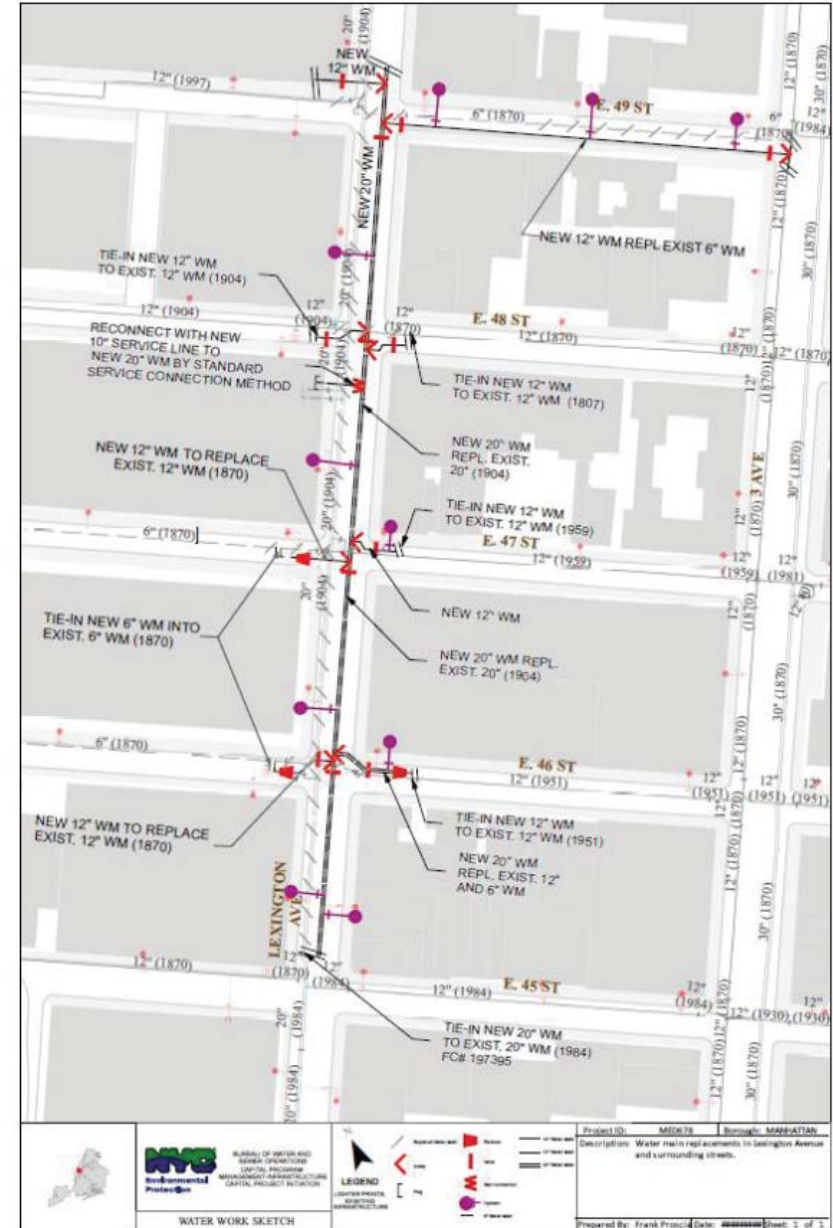


# PROJECT INTENT & GOALS

## Project Utility Elements (Packages 1 & 2 – IN CONSTRUCTION)

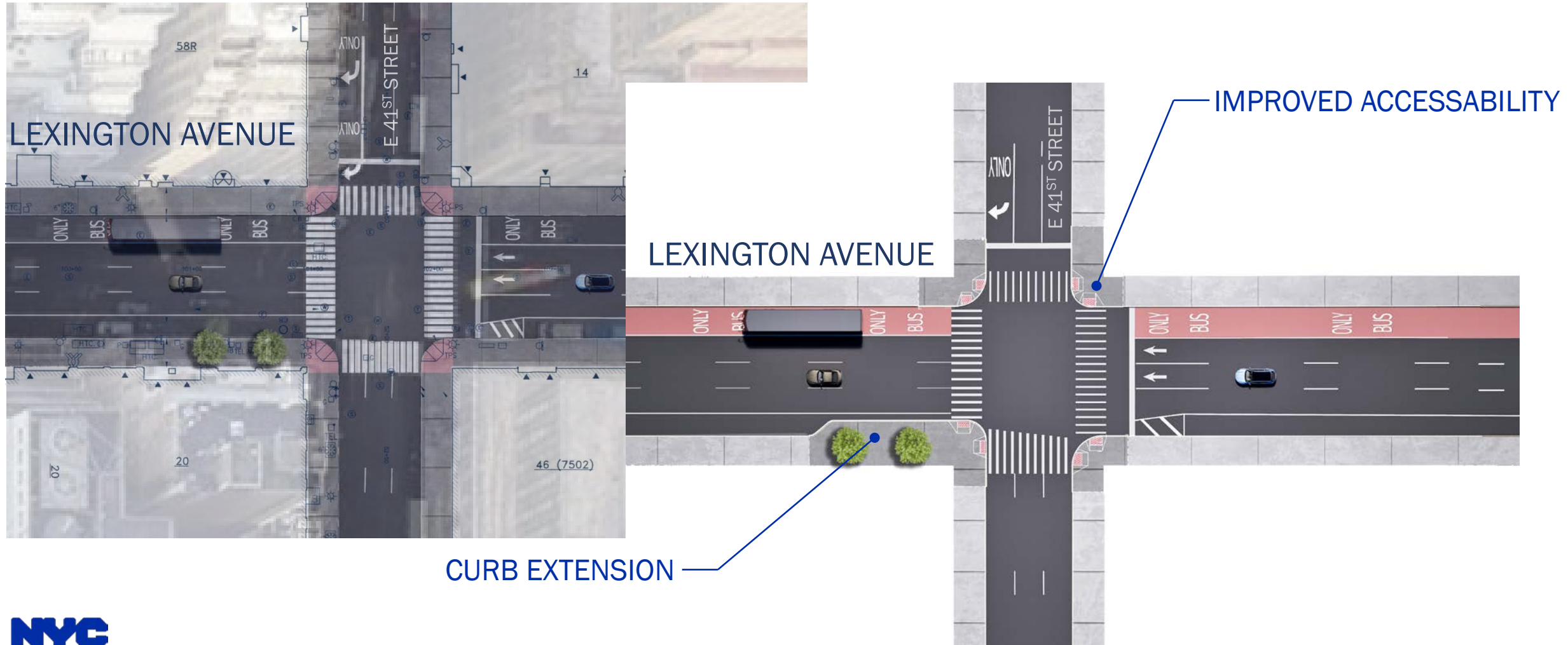
### Watermain Replacement

- 20" Watermain (1200 LF)
- 12" Watermain (900 LF)
- 6" Watermain (50 LF)



# EXISTING AND PROPOSED CONDITIONS:

## 41<sup>ST</sup> STREET





# EXISTING AND PROPOSED CONDITIONS:

## 45<sup>TH</sup> TO 46<sup>TH</sup> STREETS



MAINTAIN PEDESTRAIN SPACE

CURB EXTENSION

IMPROVED  
ACCESSIBILITY

LEXINGTON AVENUE

# EXISTING AND PROPOSED CONDITIONS:

## 47<sup>TH</sup> TO 48<sup>TH</sup> STREETS



MAINTAIN PEDESTRAIN SPACE

CURB EXTENSION

IMPROVED  
ACCESSABILITY

LEXINGTON AVENUE



# PROPOSED SECTION



---

# COMMUNITY IMPACTS DURING CONSTRUCTION (ONGOING AND WILL CONTINUE)

- Temporary traffic lane and sidewalk closures
- Temporary loss of parking
- Temporary relocation of bus stops
- Watermain shut-downs
- Variable work hours:
  - Allowable work hours vary by location and coordination with NYC DOT OCMC is on-going
  - Lexington Ave within barriers between 47<sup>th</sup> and 48<sup>th</sup> St:
    - Work is permitted 24 hours 7 days a week
    - 8-hour shifts are scheduled based on operation day or night
  - Lexington Ave Night Work:
    - 7pm – 7am
  - Lexington Ave between 48<sup>th</sup> and 49<sup>th</sup> St:
    - 7am – 7pm
  - All water main shutdowns:
    - 9pm – 5am

# COMMUNITY ENGAGEMENT

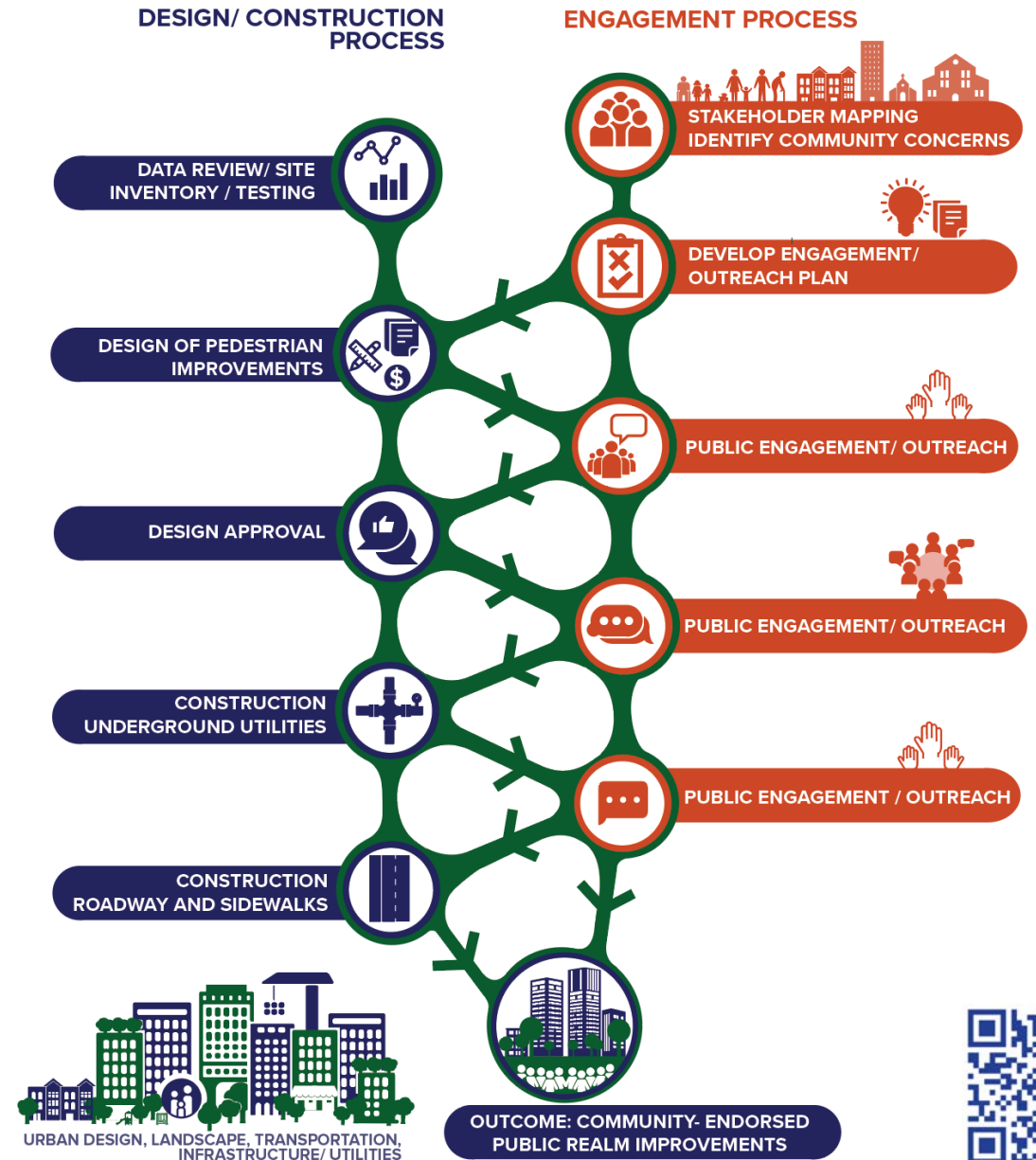
## Community Construction Liaison:

**Name:** Diane Guskin

**Phone Number:** (917) 673-5503

**Email:** [lexaveccl@nv5.com](mailto:lexaveccl@nv5.com)

**Project Website:** [lexingtonavepedsafety.nyc](http://lexingtonavepedsafety.nyc)



# ENVISION

## DDC PROJECT TYPOLOGY IX: STREET WORKS

### ENVISION GOAL: GOLD AWARD



#### Quality of Life

14 Credits

Wellbeing, Mobility, Community



#### Leadership

12 Credits

Collaboration, Planning, Economy



#### Resource Allocation

14 Credits

Materials, Energy, Water



#### Natural World

14 Credits

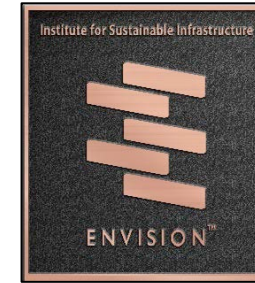
Siting, Conservation, Ecology



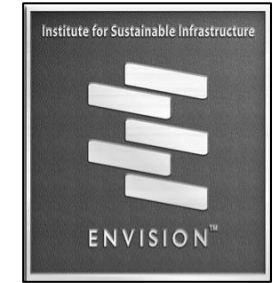
#### Climate & Resilience

10 Credits

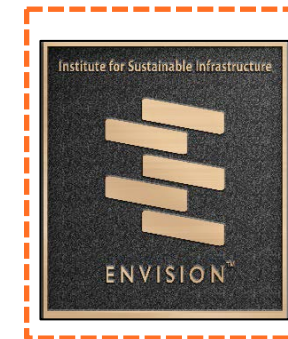
Emissions, Resilience



Verified



Silver



Gold

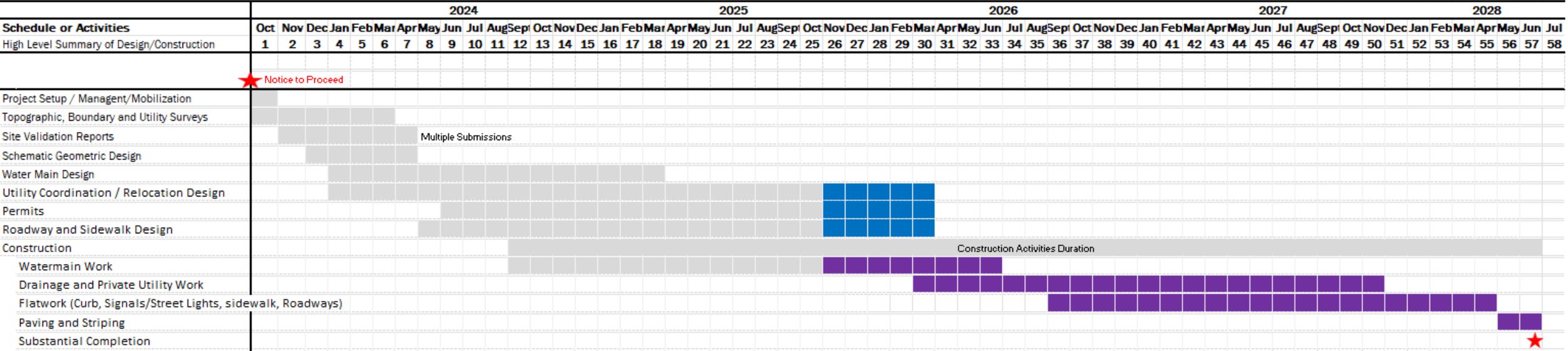


Platinum





# PROJECT SCHEDULE



---

# MILESTONES

---

10.28.2025 Substantial Completion (Package 2 – 49<sup>th</sup> Watermain)

**2025**

---

06.24.2026 Substantial Completion (Package 1 – Lexington Watermain)

**2026**

03.30.2026 Start Sidewalk/Roadway Construction (Package 3 – Flatwork)

---

June 2028 Substantial Completion

**2028**

---

# THANK YOU