

79th Street Crosstown SBS, Capital Project

79th Street from Riverside Drive to FDR Drive

Community Board 7
Transportation Committee
April 8, 2025



© NYC DOT

Table of Contents

1. Background

- 79th Street Transit Corridor
- 2017 Street Improvement Project

2. Performance

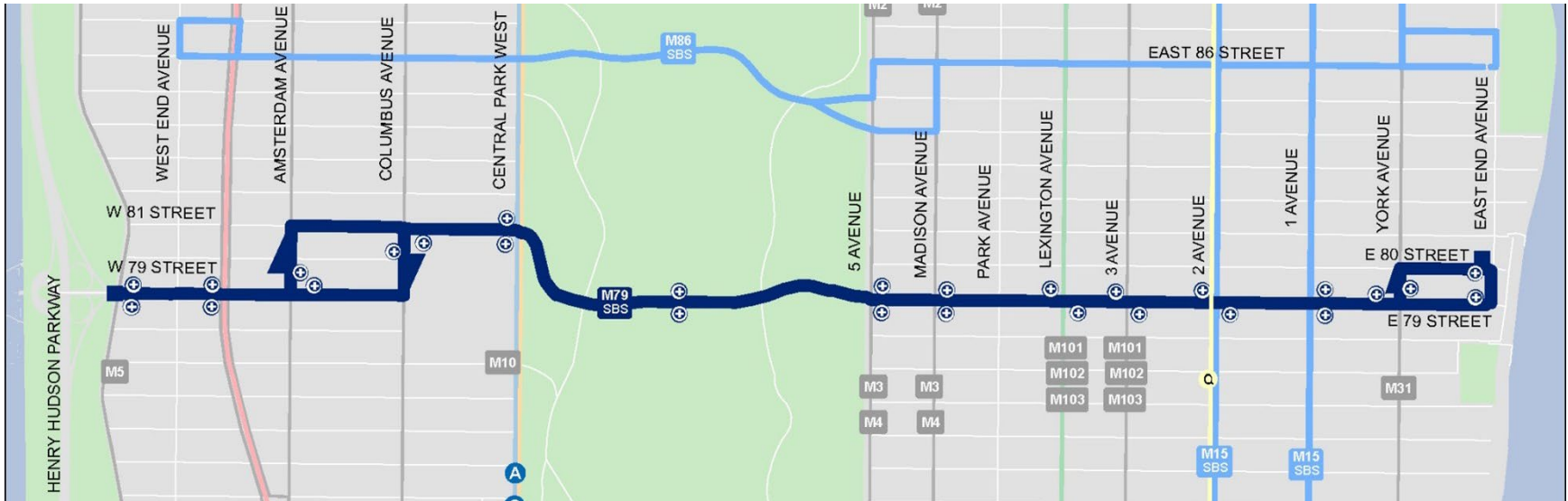
- Transit Improvements
- Safety Improvements

3. 79th Street Crosstown SBS Capital Project

4. Next Steps and Discussion

Background

79th Street



- Major transit corridor, hosts M79-SBS:
 - 13,500 daily riders
 - High ridership by route mile vs. other routes
 - Connects to 4 subway lines
 - Connects to 16 bus routes, including M15-SBS
- Cultural destinations:
 - American Museum of Natural History
 - Metropolitan Museum of Art
 - Central Park
 - Riverside Park
- 26 people have been killed or severely injured along 79th Street SBS corridor in the past 5 years (2020 - 2024):
 - Killed or Severely Injured (KSI) rate of 11.5 per mile (Top 33% in Manhattan)
 - Fatal crash at 2nd Avenue / E 79th Street in 2024

2017 Street Improvement Project

- Launched the M79 Select Bus Service to replace the M79 Local and included:
 - 8 bus queue jump lanes
 - 1 full block bus lanes
 - Signal timing improvements
 - Off-board fare payment
 - Real-time passenger information
 - Bus stop amenities & street furniture



Performance

79th Street SBS – Transit & Traffic Improvements

- Instances of bus bunching **decreased by 6%.**
- Bus dwell times at bus stops **decreased by 21%.**
- Bus ridership on the M79-SBS **increased by 9%** in the first year after the launch.
- Car travel times **decreased by 4% to 8%** along the corridor.
- Bus speeds **improved by an average of 8%.**
- Number of late buses **decreased by up to 45%.**
- Bus Speeds (2024):
 - **6.9 MPH** (M79-SBS) vs. 6.0 MPH (Manhattan)
- On-time performance (2024):
 - **81.4%** (M79-SBS) vs. 69.5% (NYC)



79th Street SBS – Safety Improvements

Since implementation, all categories of crashes and injuries are down along the corridor.

2012-2016 Avg vs. 2017-2024 Avg:

- Pedestrian injuries are **down 63%**.
- Cyclist injuries are **down 17%**.
- Motor Vehicle crashes are **down 62%**.
- Total Incidents are **down 57%**.

*NYPD and NYS data.

Injuries by Year

Year	Peds	Cyclists	Motor Vehicles	Total
2012-2016 Avg.	30	9	54	94
2017	14	7	34	55
2018	18	3	25	46
2019	21	13	15	49
2020	9	6	12	27
2021	7	9	21	37
2022	9	13	23	45
2023	8	10	21	39
2024	10	6	19	35

79th Street SBS – Challenges Remain

- Certain improvements could not be completed with in-house materials.
- Pedestrian safety measures don't have full impact until solidified with permanent materials.
- Crowding at certain bus stops and lack of circulation space.
- Some bus operations issues remain.
- Sections of the roadway and sidewalk in need of capital improvements and repair.

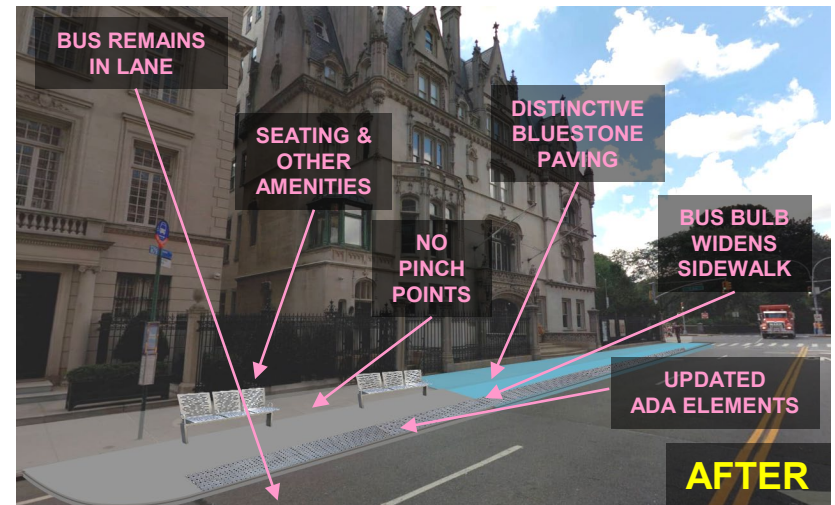
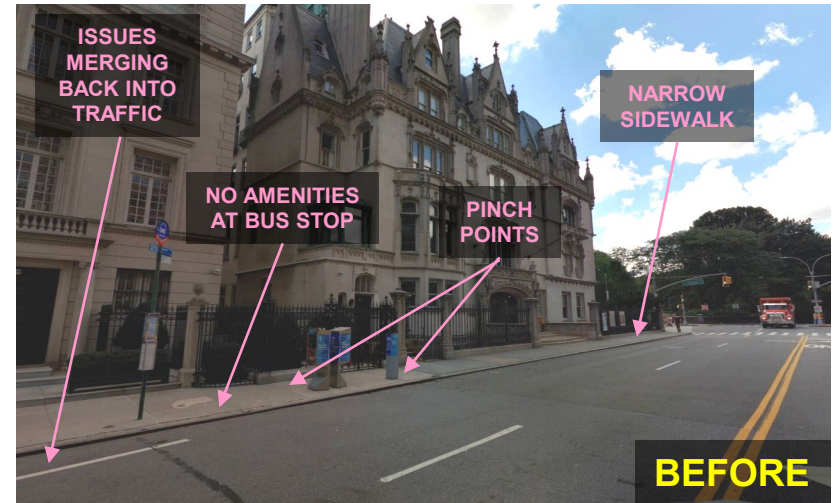


79th Street SBS Capital Project

79th Street Crosstown SBS, Capital Project

E 79 St & 5 Avenue

- Maintain:
 - Alignment of bus lanes
 - Operational hours of bus lanes
 - 2017 traffic signal changes
- Upgrade:
 - 15 Bus Stops
 - 14 Bus Pads
 - 9 Median Tips/Pedestrian Refuges
- Add:
 - 4 Bus Bulbs
 - 13 Sidewalk Extensions
 - 20+ Street Trees



79th Street Crosstown SBS, Capital Project

E 79 St & 5 Avenue

Total Estimated Cost: \$60 million*

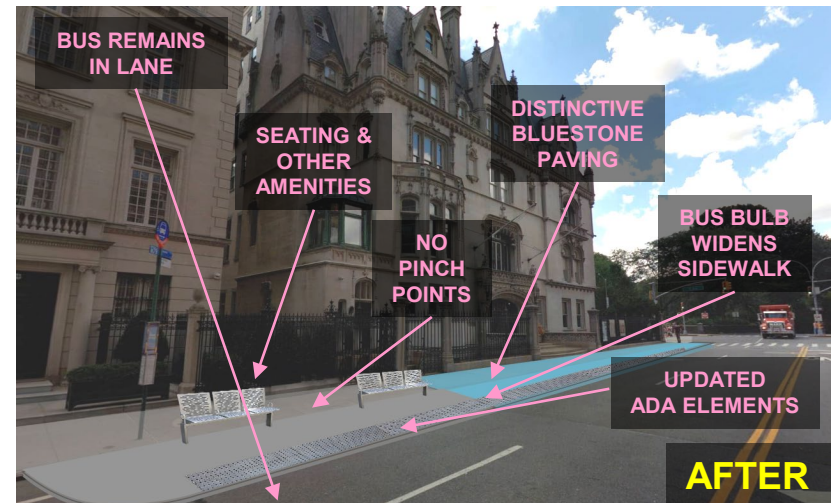
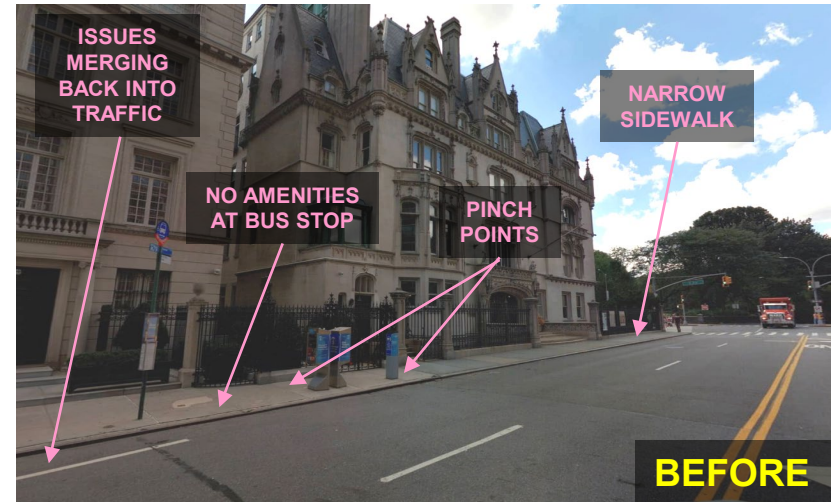
DOT Scope: \$25 million

- West Side: **\$10 million**
- East Side: \$15 million

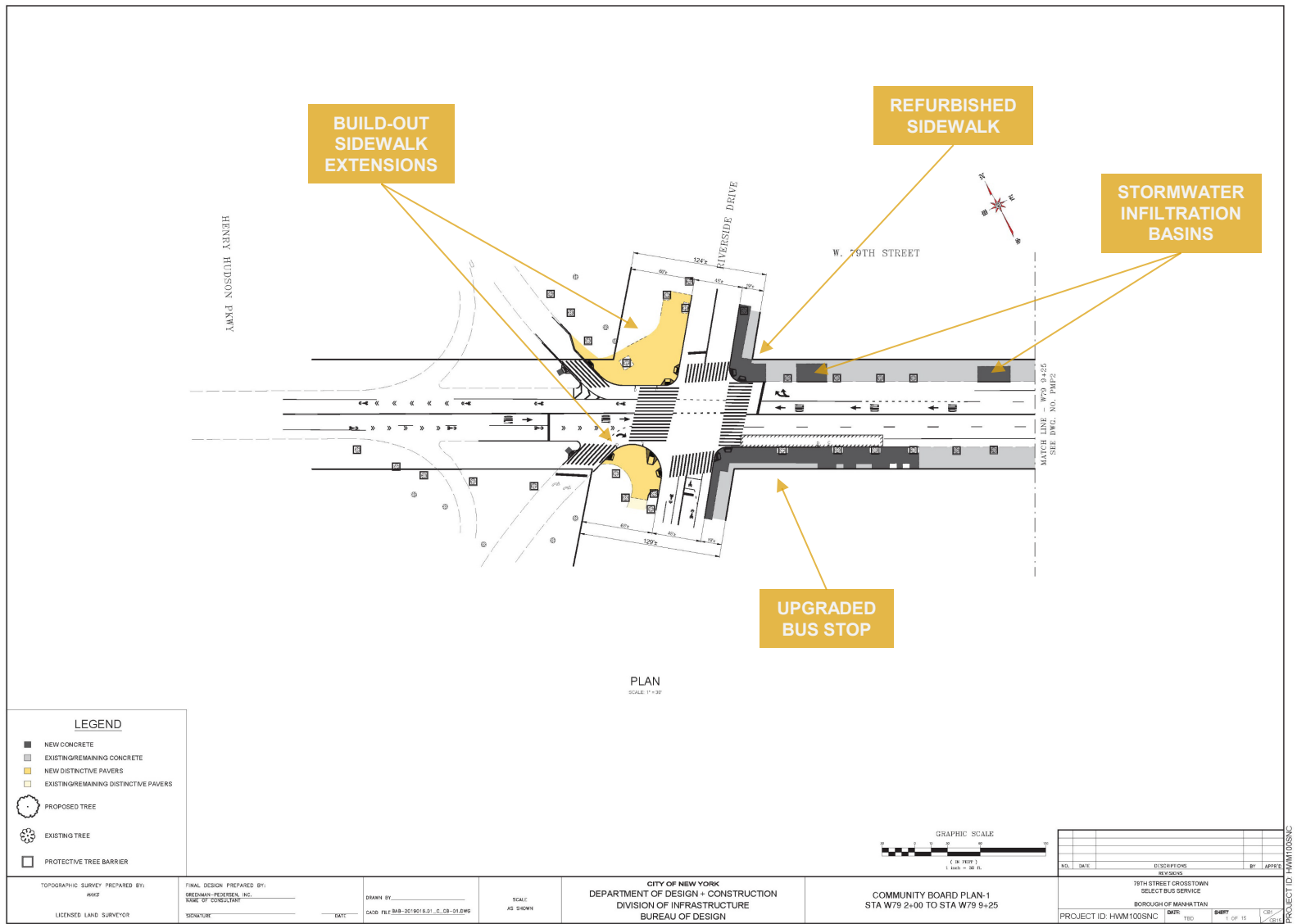
DEP Scope: \$35 million

- West Side: \$19 million
- East Side: \$16 million

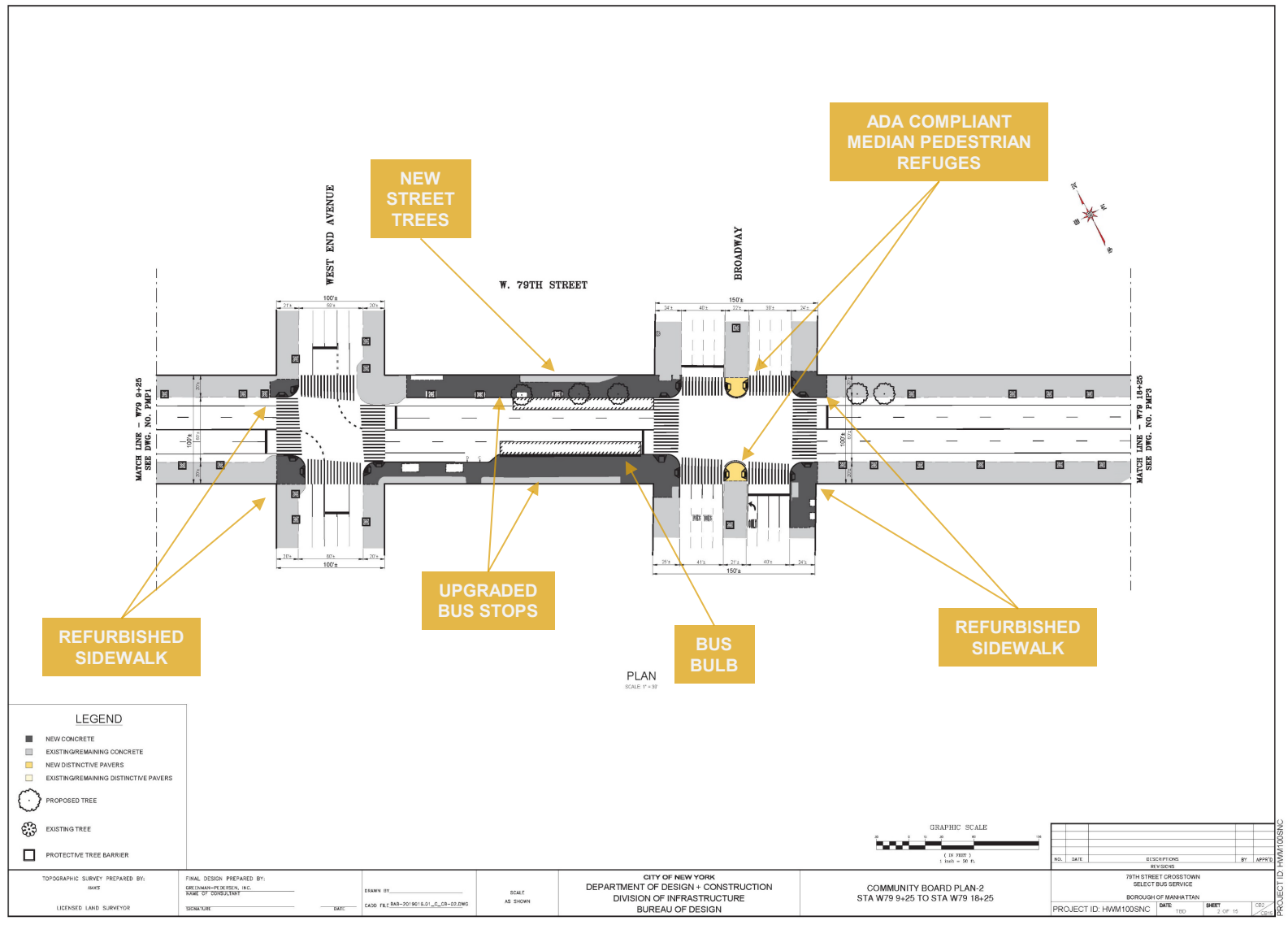
*includes contingency



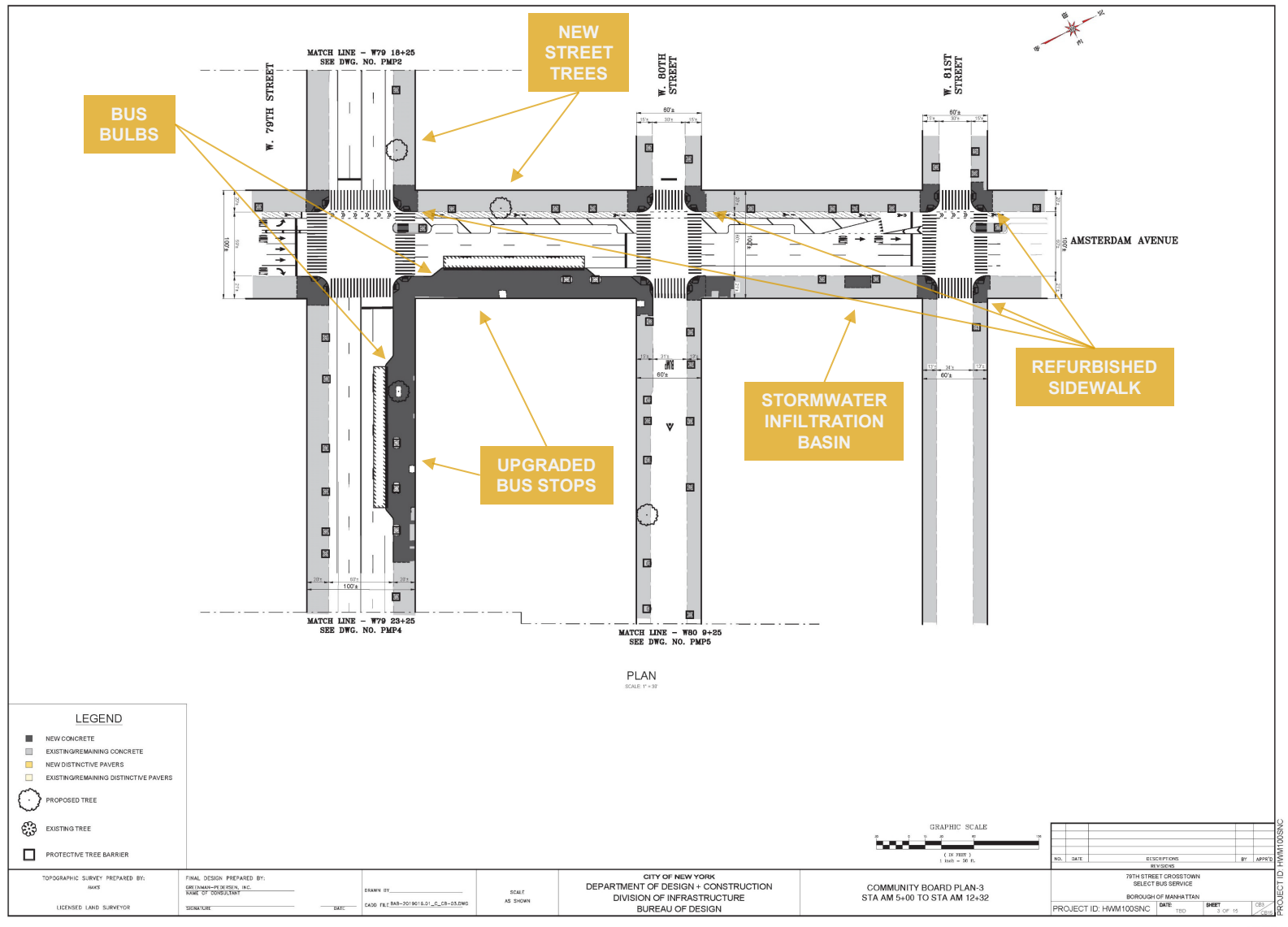
W 79th St – Riverside Dr



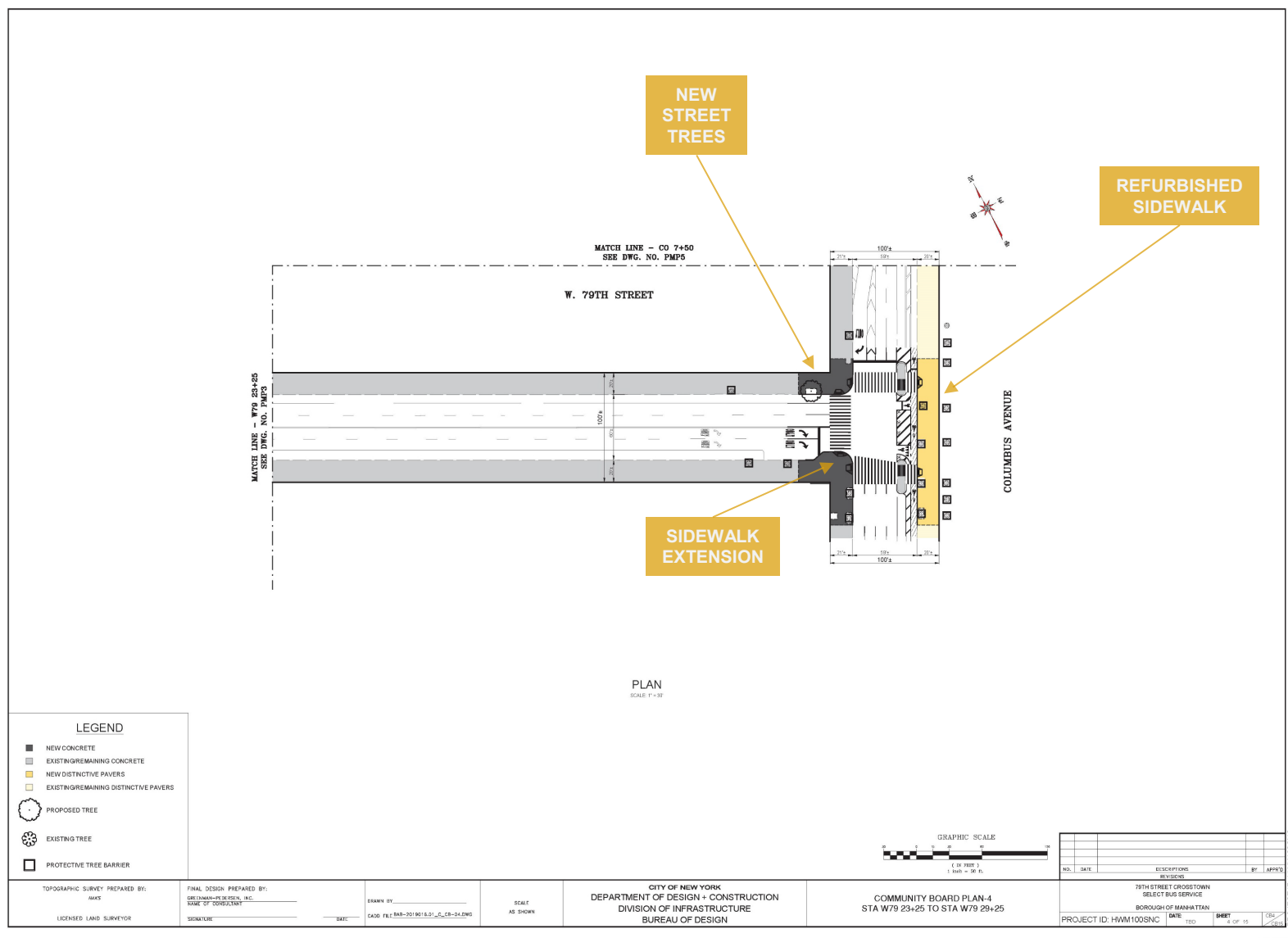
W 79th St – West End Av to Broadway



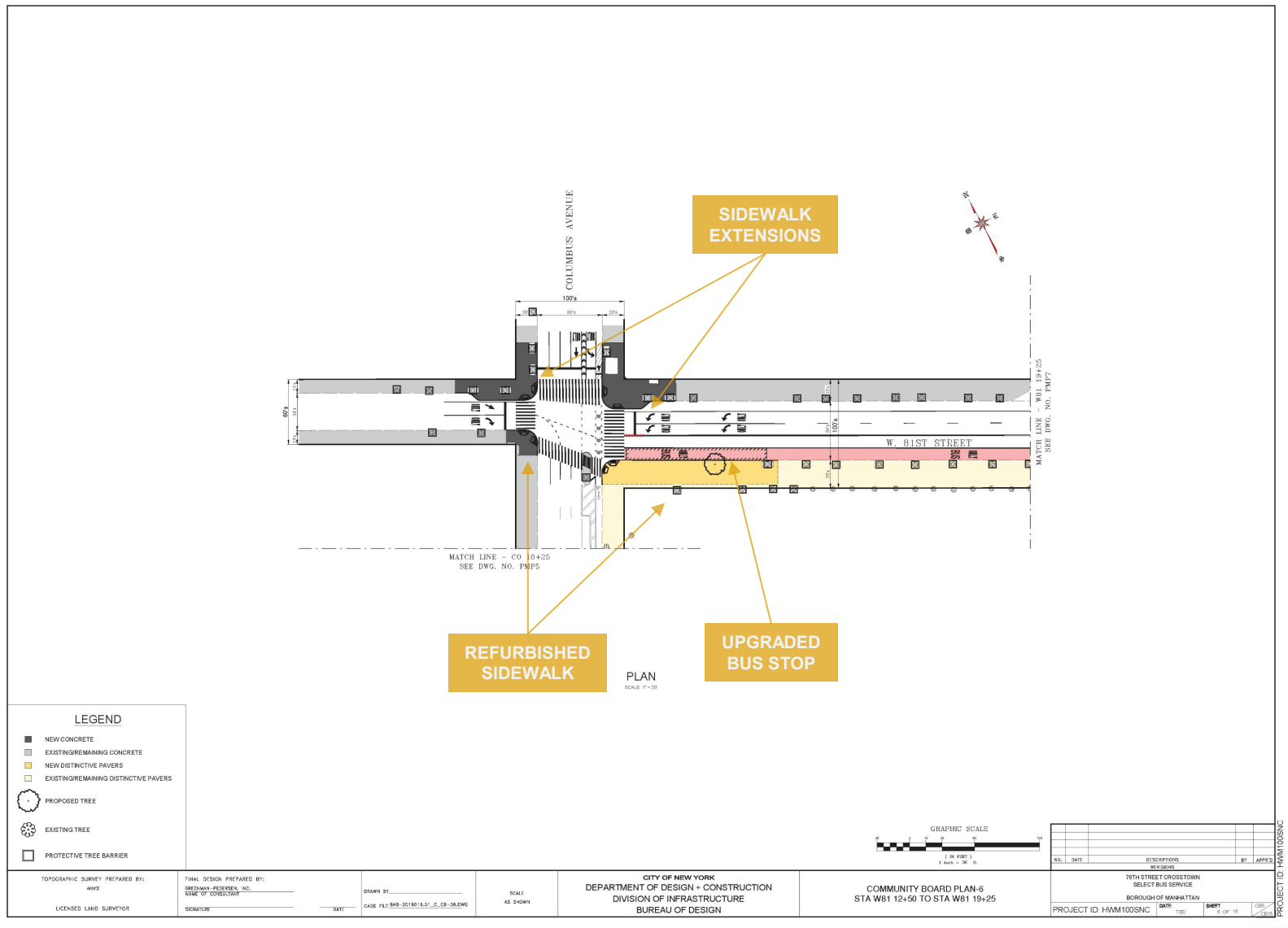
Amsterdam Av – W 79th St to W 81st St



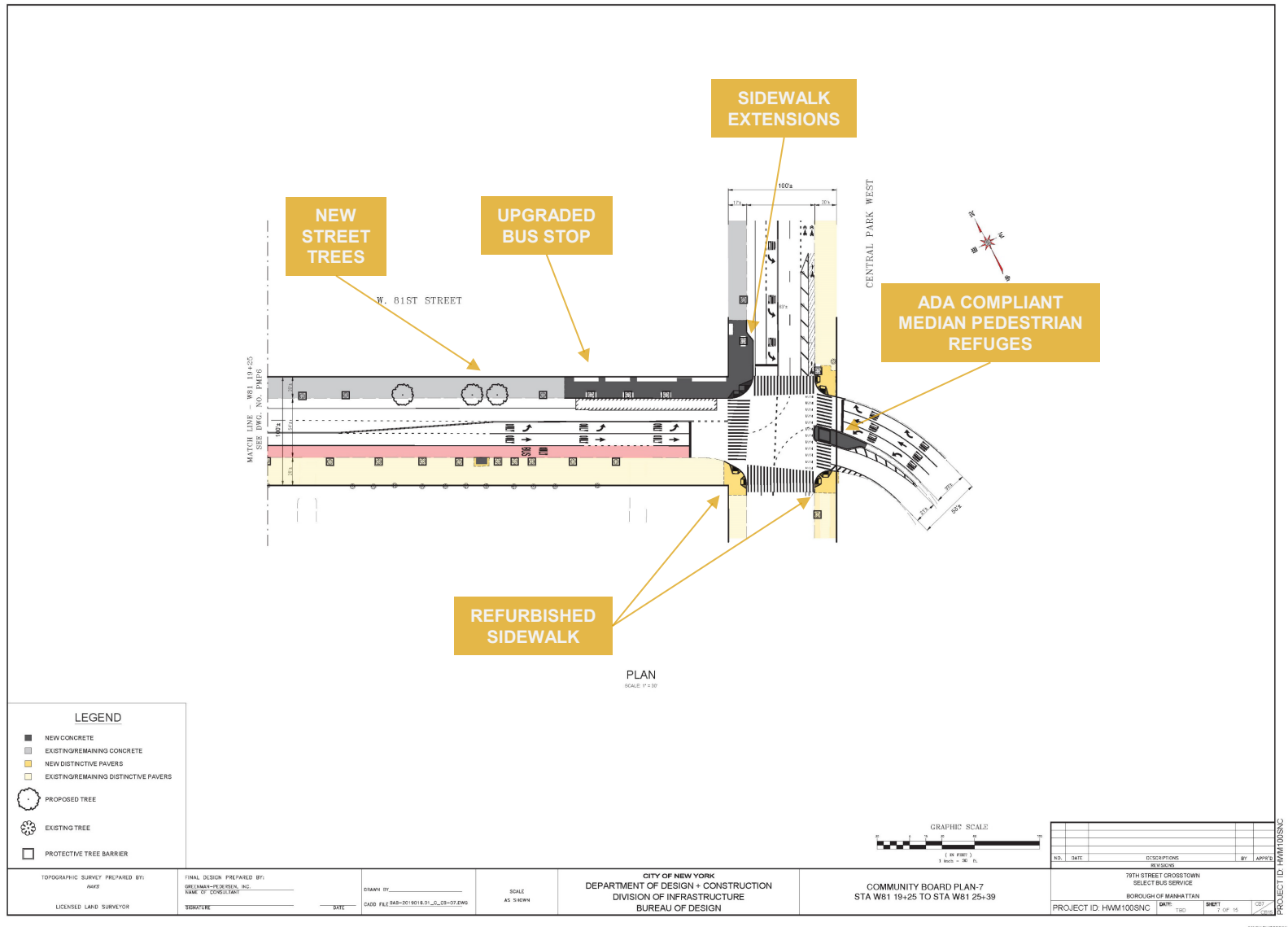
W 79th St – Columbus Av



W 81st St – Columbus Av



W 81st St – Central Park West



Next Steps & Discussion

Next Steps

- **Design Completion:**
 - Fall 2025
- **Construction Start:**
 - Summer 2026
- **Construction Completion:**
 - Winter 2030



Thank You!

Questions?



NYCDOT



nyc_dot



nyc_dot



NYCDOT